

# NORTH TEXAS BASKETBALL

18 CONFERENCE CHAMPIONSHIPS • 1988, 2007, 2010 NCAA TOURNAMENT

Stephen Howard • Asst. Director Communications • Office: 940.369.8548 • Cell: 817.793.5199 • stephen.howard@unt.edu

## 2013-14 SCHEDULE

### NOVEMBER

8	Northwood	W 72-67
11	at Oklahoma # (SSN, FSOK)	L 95-82
14	Nicholls State	W 92-78
21	vs. Columbia \$	L 70-66
22	vs. Idaho \$	L 87-76
23	at Portland \$	W 77-72 (2OT)
26	Incarnate Word	W 84-67
30	Southeastern Louisiana	W 75-61

### DECEMBER

3	at BYU (BYUtv)	L 97-67
15	Stephen F. Austin	L 87-53
17	Central Arkansas (TWC)	W 64-55
21	Wayland Baptist	3 p.m.
31	at Texas A&M (FSN)	4:30 p.m.

### JANUARY

4	UC Riverside	2 p.m.
9	Southern Miss *	7 p.m.
11	Tulane * (CSS)	1 p.m.
16	at Marshall * (TWC)	6 p.m.
18	at Charlotte * (TWC)	6 p.m.
23	UAB *	7 p.m.
25	Middle Tennessee *	7 p.m.

### FEBRUARY

1	at Tulsa *	3 p.m.
6	at Rice *	7 p.m.
8	at Louisiana Tech *	6 p.m.
13	Old Dominion *	7 p.m.
15	East Carolina *	7 p.m.
20	at FIU *	6 p.m.
22	at Florida Atlantic *	6 p.m.
27	at UTSA *	7 p.m.

### MARCH

2	UTEP * (TWC)	2 p.m.
6	Tulsa *	7 p.m.

12-15 Conference USA Tournament %

# Coaches vs. Cancer Classic (Norman, Okla.)

\$ Coaches vs. Cancer Classic (Portland, Ore.)

\* Conference USA league game

% C-USA Tournament (El Paso, Texas)

All times Central

## GAME 12 - WAYLAND BAPTIST PIONEERS



North Texas (6-5) vs. Wayland Baptist (7-1)

Saturday, Dec. 21, 2013 • 3 p.m.

Denton, Texas • The Super Pit (10,500)

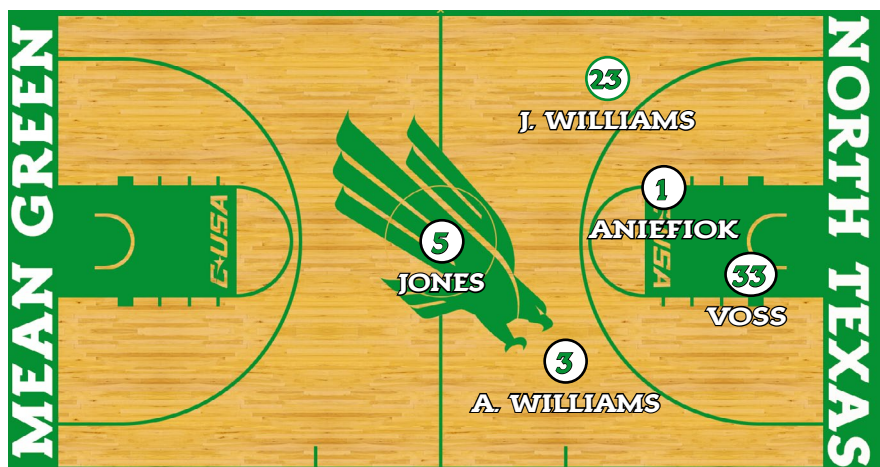
Radio: MGRN - 88.1 KNTU-FM, 95.3 KHYI-FM

George Dunham (PXP), Hank Dickenson (Color)

Webcast: MeanGreenSports.com (Subscription)

RPI: NT - 223, UCA - N/A

Series: NT 5-1 • Last: NT 75-66 on 12/21/74 in Denton



### NORTH TEXAS PROBABLE STARTERS

No.	Pos	Name	Ht	Wt	Class	Hometown	Pts/Reb/Other
2	G	Brandan Walton	6-2	205	Sr.	Compton, Calif.	6.0 / 2.5 / 1.1 SPG
3	G	Alzee Williams	6-4	182	Sr.	Dallas	14.0 / 3.5 / 1.3 APG
23	G	Jordan Williams	6-6	202	Jr.	Dallas	11.8 / 6.5 / 1.1 SPG
33	F	Colin Voss	6-7	240	Jr.	Grand Rapids, Mich.	4.4 / 5.5 / 0.6 APG
44	F	Keith Coleman	6-10	250	Jr.	Philadelphia	6.1 / 5.6 / 1.4 BPG

### RESERVES

No.	Pos	Name	Ht	Wt	Class	Hometown	Pts/Reb/Other
0	G	Vertrail Vaughns	6-2	194	Sr.	Mesquite, Texas	8.8 / 1.9 / 82.5 FT%
1	G/F	Maurice Aniefiok	6-5	212	So.	Lagos, Nigeria	6.9 / 4.7 / 48.1 3FG%
4	F	Armani Flannigan	6-8	200	Jr.	Rockford, Ill.	3.4 / 2.7 / 1.3 BPG
5	G	Chris Jones	6-2	203	Jr.	Garland, Texas	8.7 / 4.3 / 3.6 APG
10	G	Austin Mitchell	6-1	180	So.	Plano, Texas	-
21	G	T.J. Taylor	6-3	215	Jr.	Denison, Texas	8.3 / 2.3 / 49.1 FG%
22	G	Greg Wesley	6-7	190	Fr.	Arlington, Texas	-
24	F/C	Kelvin Gaines	6-10	240	Jr.	Ocala, Fla.	0.0 / 1.0 / 0-2 FG

### COACHING STAFF

- Head Coach: Tony Benford  
2nd year at NT (18-25 Record)  
Overall (Same)
- Associate Head Coach: Rob Evans
- Asst. Coaches: David Anwar,  
Scott Monarch
- Director of Operations: Jeff Luster
- Strength Coach: Chris Seroka

### MEAN GREEN

73.5	PPG	93.2
-2.5	Margin	+28.3
41.0	FG%	53.2
33.7	3PT%	42.5
66.7	FT%	63.3
+1.6	Rebound Margin	+10.9
9.2	Asst. Avg.	17.5
13.6	TO Avg.	15.3
6.4	Steals Avg.	11.1
3.8	Blocks Avg.	3.8

### PIONEERS

**INSIDE THE MATCHUP**

• Wayland Baptist is the only school to rank in the NAIA top 10 nationally in both scoring offense and defense. The Pioneers lead the nation in scoring margin.

• Exactly 39 years have passed since North Texas and Wayland Baptist met on the hardwood. NT leads the overall series, 5-1, with the Pioneers.

Date	Site	Winner	Score
12/4/52	Plainview	NT	74-71
2/11/53	Denton	NT	74-65
1/14/54	Denton	NT	73-62
2/5/55	Denton	WBU	74-70
12/8/73	Denton	NT	107-73
12/21/74	Denton	NT	75-66

• The 1973 meeting between these two programs, a 107-73 NT victory, was just the second ever game held at the Super Pit, and was a record-setting tilt. The building had been christened just five days earlier with a 109-93 win over cross-town rival, TCU. NT knocked down 47 field goals against WBU, which still ranks fourth in program history. NT's 71 rebounds that day are tied for the third most ever by NT.

• The Pioneers appeared in Others Receiving Votes in the year's inaugural NAIA Division I Men's Basketball Coaches' Top 25. The last time the Pioneers actually appeared in the Top 25 was 2007-08 when, as the No. 22 team, they advanced to the second round of the NAIA National Tournament. Wayland finished that season 20-13, which was the team's last winning record.

• NT is 22-32 against current members of the Sooner Athletic Conference (NAIA Div. I), although a 6-20 record against Oklahoma City (previously an NCAA Division I power until 1985) taints that mark. Northwood, which NT beat 72-67 in the season opener, is a new member of the league.

• Wayland Baptist junior Juhreece Thompson is the nephew of North Texas head coach Tony Benford.

**MEAN GREEN QUICK FACTS**

Location: Denton, Texas  
 Founded: 1890  
 Enrollment: 36,221  
 Nickname: Mean Green  
 Colors: Green and White  
 Home Arena: The Super Pit (10,500)  
 Affiliation: NCAA Division I  
 Conference: Conference USA  
 Program All-Time Record: 1,081-1,219-1  
 Program founded: 1916-17 (96th season)

**INDIVIDUAL QUICK HITTERS (FULL BIOS ON MEANGREENSPORTS.COM)**

- 0 VERTRAIL VAUGHNS** 117 Division I games are 16th most among active Div. I ... 41% of shots are from 3-pt ... 2nd at NT with 17 assists (high of 5 vs. OU) ... 711 career points ... George Mason: Career 38.5% from 3-point.
- 1 MAURICE ANIEFIOK** Ranks 2nd in C-USA with a 48.1 3FG% (13-of-27) ... 3-of-5 from deep at BYU ... 21 points, 10 rebounds (both career highs) vs. Nicholls St. ... Saw 30 games of action for 'Ole Miss as a frosh (1.4 PPG).
- 2 BRANDAN WALTON** 64 career 3-ptrs on 34.6% ... 12 steals tied for team high ... Career-high in rebs (8), steals (4) in opener ... Redshirt 12-13 after foot injury 1 min into opener at Creighton ... Hit 54 3-pointers in 11-12.
- 3 ALZEE WILLIAMS** Leading scorer (14.0 PPG), 9 double-digit games ... 103 career games at NT (63 starts) ... Only player to start every game of 2013-14 ... 2,595 career minutes, 862 career points ... Played 35.5 MPG last year.
- 4 ARMANI FLANNIGAN** 9th in C-USA with 1.36 BPG despite team-low 12.5 MPG ... 4 multi-block games ... NT's Dunk Contest winner ... Central Wyoming: 2nd team All-Region IX ... 56.4 FG% ranked 67th in NJCAA.
- 5 CHRIS JONES** Day-to-day with back strain (4 mins into SFA game) ... Entered Sunday ranked 8th in C-USA with 4.0 APG, 1.8 A/TO ... 2nd career double-double at Portland (12 pts, 10 reb) ... 191 career assists.
- 10 AUSTIN MITCHELL** Expected to REDSHIRT 2013-14 ... Averaged 0.9 MPG over 19 contests for NT ... Tallied a rebound in 3 games, including the season opener ... Posted a steal in the NIT Season Tip-Off game vs Lamar.
- 21 T.J. TAYLOR** 44.4 3-point percentage ranks 2nd at NT ... Exploded for 24 & 21 point games in Portland ... 12 points in OTs vs. Pilots ... Attended Marquette ... 3rd-Team NJCAA All-American at Paris JC.
- 22 GREG WESLEY** Awaiting NCAA eligibility ruling ... TexasHoops.com No. 9 player in state ... Powered Seguin HS to 33-5 record ... 13.0 PPG, 6.0 RPG as a senior ... MVP of Showboat Classic all-star game with 34 points.
- 23 JORDAN WILLIAMS** Double-digits in 4 of last 5 games (13.2 PPG) ... Leads NT with 6.5 RPG ... First career double-double vs. SLU ... Team-high 19 pts vs UIW ... C-USA "Player to Watch" ... 790 career points, 44 starts.
- 24 KELVIN GAINES** 1st appearance vs. SFA (3 mins) ... Played 39 games over last 2 years for Cinci ... Bachelor's degree from Cinci ... 39 career blocks ... Ranked 3rd at Cinci in 11-12 with 23 blocks ... Intl' experience.
- 33 COLIN VOSS** Double-double vs. UCA (13 pts, 11 reb) ... 3rd at NT with 5.5 RPG ... Team season-high 12 reb vs. SLU ... 2nd-team NJCAA All-America at Northern Okla. ... Dad coached him to HS state football title.
- 44 KEITH COLEMAN** 14 blocks (1.4 BPG) 8th in C-USA ... Missed SFA game with rolled ankle ... Took just 7 games to pass scoring total from all of '12-'13 ... 1st double-double at OU (14 pts, 10 reb) ... "Offseason MVP".

**NORTH TEXAS' RECORD WHEN ...**

Overall .....	6-5	<b>Opponent Scores:</b>	
Home .....	5-1	59 and under .....	1-0
Road .....	1-2	60-69 .....	3-0
Neutral .....	0-2	70-79 .....	2-1
Leading at half .....	5-0	80-89 .....	0-2
Trailing/Tied at half .....	1-5	90-Plus .....	0-2
Outshoots Opponent .....	5-0	<b>Shoots:</b>	
Outshot by Opponent .....	1-5	Under 35% .....	0-1
More rebounds .....	5-1	35-39% .....	2-2
Less or equal Rebounds .....	1-4	40-44% .....	3-2
More turnovers .....	3-2	45-49% .....	1-0
Less or equal turnovers .....	3-3	50%+ .....	0-0
<b>Scores:</b>		<b>Opponent Shoots:</b>	
59 and under .....	0-1	Under 35% .....	3-0
60-69 .....	1-2	35-39% .....	2-0
70-79 .....	3-1	40-44% .....	1-0
80-89 .....	1-1	45-49% .....	0-3
90-Plus .....	1-0	50%+ .....	0-2
		<b>Misc.</b>	
		With Chris Seroka (since 08-09) .....	93-62

**HEAD COACH TONY BENFORD**



**PERSONAL**

- **Birthdate**  
March 22, 1964
- **Hometown**  
Hobbs, N.M.
- **Alma Mater**  
Texas Tech, '92
- **Spouse**  
Deborah
- **Children**  
Audriana, Milena, Tony Jr., Jeremy

**COACHING**

- **North Texas**  
Head Coach (2012-Pr)
- **Marquette**  
Assoc. Head Coach (2011-12)  
Asst. Coach (2008-11)
- **Nebraska**  
Asst. Coach (2006-08)
- **UTEP**  
Asst. Coach (July 2006)
- **Arizona State**  
Assoc. Head Coach (2004-06)  
Asst. Coach (1998-04)
- **New Mexico**  
Asst. Coach (1992-98)
- **All Saints School**  
Head Coach (1988-1991)

**PLAYING CAREER**

- **European League**  
Holland (1986-87)
- **Chicago Bulls**  
Training Camp (1986)
- **Boston Celtics**  
Fourth Round Draft Pick (1986)
- **Texas Tech**  
All-SWC (1986)
- SWC Tournament MVP (1986)
- **Hobbs High School**  
1982 N.M. State MVP  
1982 State Champion

**TEAM QUICK HITTERS**

**Quick Hitters**

- NT is 6-0 this year when holding their opponent under 45 percent shooting.
- Colin Voss owns the top two rebounding performances by an NT player this year - 12 vs. SLU, 11 vs. Central Arkansas.
- Armani Flannigan ranks 9th in C-USA with 1.36 blocks per game. At 12.5 minutes per game, Flannigan is the only C-USA player in the top 10 in blocks averaging less than 20 minutes per contest.

**Double Trouble** - With Colin Voss' efforts in the win over Central Arkansas, North Texas has now had five different players record a double-double this year - more than any other C-USA team. See the chart on page four for NT's double-double players.

**Double-Double Players on C-USA Teams**

North Texas.....	5
UAB.....	4
Louisiana Tech.....	4

**Approaching 20 Wins** - At 18 career wins in 43 games, Tony Benford can still be among the fastest NT coaches to reach the 20-victory plateau. Of NT's 17 head coaches, only six reached 20 wins in fewer than 40 games.

**Fastest NT Coaches To 20 Wins (Since WWII)**

Coach	Games
Bill Blakeley	24
Tim Jankovich	39
Johnny Jones	39
Jimmy Gales	49

**700-Point Club** - North Texas now has three members of the 700-point club. Including his time at George Mason, Vertrail Vaughns now has 711 points. The senior joins Alzee Williams (862) and Jordan Williams (790) on the scoring charts.

**Getting To The Line** - The new hand-check rules play right into NT's game plan of driving the lane and getting to the free throw line. NT ranks 74th in the nation in free throws made per game (18.5), and 51st in free throws attempted per game (27.8). Only four players in C-USA have made more free throws than Alzee Williams (54 makes). As a team, NT led the nation in free throws made per game in both 2008-09 (20.3) and 2009-10 (20.1).

**Welcome To Conference USA!** - After 13 seasons in the Sun Belt Conference, North Texas is making the jump to Conference USA. C-USA, which is based locally in Irving, features attractive television packages,

elevated competition and a host of regional rivalries. C-USA features four schools within 350 miles of Denton, as well as three in-state rivals in UTEP, Rice and UTSA.

**New League, Same Results** - North Texas has plenty of reasons to be confident about the move to Conference USA. Over the last 10 seasons, the Mean Green is 26-15 (63.4 percent) against its future C-USA rivals, including a perfect combined 6-0 mark against Rice, Tulsa and Charlotte.

**Man On A Mission** - Tony Mitchell was selected with the 37th overall pick (2nd Round, 7th Pick) by the Detroit Pistons, which made him the highest NBA Draft pick in North Texas history. Mitchell rewrote NT's shot-blocking records with 157 blocks in just 55 games (2.8 per game) and was a unanimous preseason All-American prior to the 2012-13 season.

**Banged Up** - Only two teams in the country experienced more injuries in 2012-13 than North Texas. NT players combined to miss 82 collective games due to injury, which trailed only IUPUI and Utah State. NT lost Brandan Walton for the year just one minute into the season opener, and four additional players missed significant time with injuries. North Texas played with just seven scholarship players in multiple games last season.

**19 More Years Of Hoops Experience** - College graduates Vertrail Vaughns (George Mason) and Kelvin Gaines (Cincinnati) aren't the only new veterans who will suite up for NT. When you add in senior Brandan Walton (missed 2012-13 to injury), T.J. Taylor (Marquette, Paris JC, Oklahoma), Armani Flannigan (Central Wyoming State), Maurice Aniefiok ('Ole Miss) and Collin Voss (Northern Oklahoma, Central Michigan) the Mean Green added 19 years of collegiate experience (including redshirt seasons) to its roster for 2013-14.

**Hard Place To Play** - These offseason facilities upgrades will only help enhance the game-day experience for North Texas fans at the Super Pit, a place that the Mean Green has been nearly unbeatable. NT is 87-25 (77.7 percent) at the Super Pit since 2006-07.

**Winning Ways** - The Mean Green has averaged 20 wins per year over the last seven seasons, including five straight 20-win seasons from 2007-11. NT won the 2007 and 2010 Sun Belt titles, and played in the NCAA Tournament in both of those seasons.

**THE LAST TIME A MEAN GREEN PLAYER ...**

**Had 30 or more points**

31 - Jordan Williams vs. Louisiana-Lafayette, 1/31/13

**Had 15 or more rebounds**

15 - Tony Mitchell vs. Troy, 1/3/13

**Had 10 or more assists**

10 - Chris Jones vs. Troy, 12/31/11

**Had 5 or more blocks**

5 - Tony Mitchell vs. ULM, 2/14/13

**Had 5 or more steals**

5 - P.J. Hardwick vs. South Alabama, 2/23/13

**Made 90% or more FGA (min 5 att)**

1.000 - George Odufuwa vs. UALR (7-7), 2/20/10

**Made 80% or more FGA (min 5 att)**

.818 - T.J. Taylor vs. Idaho (9-11), 11/22/13

**Made 100% FTA (min 5 att)**

1.000 - Jordan Williams vs. SLU (6-6), 11/30/13

1.000 - Chris Jones vs. SLU (5-5), 11/30/13

**Made 90% or more FTA (min 5 att)**

.900 - Alzee Williams vs. UALR (9-10), 2/23/12

**Made 8 or more 3PT's**

8 - Joe Ervin vs. Arkansas, 12/30/98

**Had a double-double (pts/rbs)**

Colin Voss (13 pts / 11 reb) vs. Central Arkansas, 12/17/13

**Had consecutive double-doubles (pts/rbs)**

2 - Tony Mitchell vs. ASU (10 pts, 13 reb), USA (11 pts, 11 reb) - 2012-13

**Had a double-double (pts/asst)**

Chris Jones vs. Troy (21 pts /10 asst), 12/31/11

**Had a triple-double (pts/rbs/asst)**

Jesse Ratliff vs. Sam Houston St. (20pts/16reb/10asst), 2/18/93

**Had a perfect shooting night (min 5 fg & ft att)**

Tristan Thompson vs. Sam Houston St. (6-6 fg/2-2 3fg/6-6 ft), 12/3/08

**THE LAST TIME A MEAN GREEN TEAM ...**

**Scored 100 or more points**

107 - vs. Houston Baptist, 2/15/10

**Allowed 100 or more points**

105 - vs. Louisiana-Lafayette, 1/31/13

**Scored 50 or fewer points**

45 - vs. Southeastern Louisiana, 12/16/12

**Held an opponent under 50 points**

47 - vs. New Orleans, 12/27/11

**Won an overtime game**

77-72 (2OT) - at Portland, 11/23/13

**Had 50 or more rebounds**

57 - vs. Northwood, 11/8/12

**Had 20 or more assists**

22 - vs. Western Kentucky, 1/12/12

**Had 10 or more steals**

11 - vs. Columbia, 11/21/13

**Had 5 or more blocks**

5 - vs. BYU, 12/3/13

**Five or more players in double-figures**

7 - vs. FIU, 2/9/13

**Made 60% or higher FGs**

.750 - vs. FIU (24-32), 2/9/13

**Made 50% or higher 3pt FGs**

.500 - at Portland (8-16), 11/23/13

**Made 90% or higher FTs**

.938 - vs. St. Louis (15-of-16), 12/6/12

**NORTH TEXAS STARTING LINEUPS**

Opponent	1	2	3	4	5
Northwood.....	Jones.....	A. Williams.....	J. Williams.....	Flannigan.....	Coleman
Oklahoma.....	A. Williams.....	Vaughns.....	Walton.....	Voss.....	Coleman
Nicholls State.....	A. Williams.....	Vaughns.....	Walton.....	Flannigan.....	Coleman
Columbia.....	Jones.....	A. Williams.....	Walton.....	Voss.....	Coleman
Idaho.....	Jones.....	Vaughns.....	A. Williams.....	Voss.....	Coleman
Portland.....	Jones.....	A. Williams.....	Walton.....	Voss.....	Coleman
Incarnate Word.....	Jones.....	A. Williams.....	Walton.....	Voss.....	Coleman
SLU.....	Jones.....	Vaughns.....	A. Williams.....	Voss.....	Coleman
BYU.....	Jones.....	Vaughns.....	A. Williams.....	Voss.....	Coleman
SFA.....	Jones.....	A. Williams.....	J. Williams.....	Aniefiok.....	Voss
Central Ark.....	A. Williams.....	Walton.....	J. Williams.....	Voss.....	Coleman
Wayland Baptist.....					
Texas A&M.....					
UC Riverside.....					
Southern Miss.....					
Tulane.....					
Marshall.....					
Charlotte.....					
UAB.....					
MTSU.....					
Tulsa.....					
Rice.....					
Louisiana Tech.....					
Old Dominion.....					
East Carolina.....					
FIU.....					
Florida Atlantic.....					
UTSA.....					
Tulsa.....					

**NORTH TEXAS INDIVIDUAL SUPERLATIVES**

**Double-Doubles (5)**

Keith Coleman..... 1.....at OU (14 pts, 10 reb)  
 Maurice Aniefiok.... 1.....Nicholls St. (21 pts, 10 reb)  
 Chris Jones..... 1.....at Portland (12 pts, 10 reb)  
 Jordan Williams..... 1.....SLU (15 pts, 10 reb)  
 Colin Voss..... 1.....Central Arkansas (13 pts, 11 reb)

**20-Plus Point Games (5)**

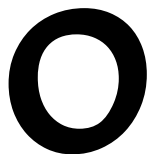
Alzee Williams..... 2.....Northwood (22), at OU (24)  
 T.J. Taylor..... 2.....vs. Idaho (24), at Portland (21)  
 Maurice Aniefiok.... 1.....Nicholls St. (21)

**Double-Digit Rebound Games (7)**

Colin Voss..... 2.....SLU (12), Central Ark. (11)  
 Jordan Williams..... 2.....Northwood (10), SLU (10)  
 Maurice Aniefiok.... 1.....Nicholls St. (10)  
 Chris Jones..... 1.....at Portland (10)  
 Keith Coleman..... 1.....at OU (10)

**NT SEASON/CAREER GAMES PLAYED/STARTED**

Player	2013-14 Season		Career	
	Games	Starts	Games	Starts
A. Williams	11 (6-5)	11 (6-5)	103 (58-45)	63 (32-31)
J. Williams	11 (6-5)	3 (2-1)	62 (29-33)	44 (18-26)
Jones	10 (5-10)	8 (4-4)	45 (22-23)	41 (20-21)
Walton	11 (6-5)	6 (4-2)	43 (24-20)	23 (15-8)
Coleman	10 (6-4)	10 (6-4)	40 (16-24)	11 (7-4)
Voss	11 (6-5)	9 (4-5)	-	-
Flannigan	11 (6-5)	2 (2-0)	-	-
Vaughns	10 (5-5)	5 (2-3)	-	-
Aniefiok	9 (5-4)	1 (0-1)	-	-
Taylor	9 (5-4)	-	-	-
Gaines	1 (0-1)	-	-	-



# VERTRAIL VAUGHNS

Sr. ▶ G ▶ 6-2 ▶ 194  
Mesquite, TX ▶  
(George Mason)



## ↳ CAREER HIGHS

Points: 18, vs Columbia -- 11/21/13  
Rebounds: 4, vs Idaho -- 11/22/13  
Assists: 5, at Oklahoma -- 11/11/13  
Steals: 2, Stephen F. Austin -- 12/15/13  
Blocks: 1, Southeastern La. -- 11/30/13  
FG made: 5, vs Columbia -- 11/21/13  
FG attempts: 14, at BYU -- 12/03/13  
3FG made: 4, vs Columbia -- 11/21/13  
3FG attempts: 6, vs Columbia -- 11/21/13  
FT made: 8, Nicholls State -- 11/14/13  
FT attempts: 10, Nicholls State -- 11/14/13

## ↳ 2013-14 STATS

Opponent	Date	qs	min	Total		3-Pointers		Free throws		Rebounds				pf	a	t/o	blk	stl	pts	avg
				fg-fga	pct	3fg-fga	pct	ft-fta	pct	off	def	tot	avg							
NORTHWOOD	11/8/13		16	1-6	.167	1-3	.333	1-2	.500	1	2	3	3.0	2	2	1	0	0	4	4.0
at Oklahoma	11/11/13	*	23	0-4	.000	0-1	.000	2-2	1.000	0	1	1	2.0	1	5	2	0	1	2	3.0
NICHOLLS STATE	11/14/13	*	22	4-4	1.000	1-1	1.000	8-10	.800	0	1	1	1.7	2	1	1	0	1	17	7.7
vs Columbia	11/21/13		20	5-11	.455	4-6	.667	4-5	.800	0	1	1	1.5	3	0	1	0	1	18	10.3
vs Idaho	11/22/13	*	23	3-9	.333	0-4	.000	2-4	.500	0	4	4	2.0	4	1	2	0	1	8	9.8
INCARNATE WORD	11/26/13		19	2-6	.333	1-3	.333	6-6	1.000	0	1	1	1.8	3	1	0	0	0	11	10.0
SOUTHEASTERN LA.	11/30/13	*	17	2-5	.400	0-1	.000	0-0	.000	0	1	1	1.7	3	1	2	1	0	4	9.1
at BYU	12/03/13	*	24	4-14	.286	1-5	.200	0-0	.000	0	3	3	1.9	2	3	2	0	1	9	9.1
STEPHEN F. AUSTIN	12/15/13		23	2-5	.400	1-3	.333	6-7	.857	0	1	1	1.8	3	0	2	0	2	11	9.3
CENTRAL ARKANSAS	12/17/13		19	0-6	.000	0-2	.000	4-4	1.000	2	1	3	1.9	0	3	5	0	1	4	8.8
Totals		5	206	23-70	.329	9-29	.310	33-40	.825	3	16	19	1.9	23	17	18	1	8	88	8.8

Games played: 10  
Minutes/game: 20.6  
Points/game: 8.8  
FG Pct: 32.9  
3FG Pct: 31.0  
FT Pct: 82.5

Rebounds/game: 1.9  
Assists/game: 1.7  
Turnovers/game: 1.8  
Assist/turnover ratio: 0.9  
Steals/game: 0.8  
Blocks/game: 0.1

## ↳ CAREER STATS

Season	gp-gs	min/avg	Total		3-Point		F-Throws		Rebounds				Scoring							
			fg-fga	pct	fg-fga	pct	ft-fta	pct	off	def	tot	avg	pf	fo	ast	to	blk	stl	pts	avg
2013-14	10-5	206/20.6	23-70	.329	9-29	.310	33-40	.825	3	16	19	1.9	23	0	17	18	1	8	88	8.8
TOTAL	10-5	206/20.6	23-70	.329	9-29	.310	33-40	.825	3	16	19	1.9	23	0	17	18	1	8	88	8.8

**1**

**MAURICE ANIEFIOK**

So. ▶ G/F ▶ 6-5 ▶ 212  
Lagos, Nigeria ▶  
(‘Ole Miss)



↳ **CAREER HIGHS**

Points: 21, Nicholls State -- 11/14/13  
Rebounds: 10, Nicholls State -- 11/14/13  
Assists: 2, at BYU -- 12/03/13  
Steals: 1, at Portland -- 11/23/13; Incarnate Word -- 11/26/13  
Blocks: 1, at BYU -- 12/03/13  
FG made: 6, Nicholls State -- 11/14/13  
FG attempts: 8, Nicholls State -- 11/14/13  
3FG made: 3, Nicholls State -- 11/14/13; at Portland -- 11/23/13; at BYU  
3FG attempts: 5, 4 times  
FT made: 6, Nicholls State -- 11/14/13  
FT attempts: 7, Nicholls State -- 11/14/13

↳ **2013-14 STATS**

Opponent	Date	gs	min	Total		3-Pointers		Free throws		Rebounds				pf	a	t/o	blk	stl	pts	avg
				fg-fga	pct	3fg-fga	pct	ft-fta	pct	off	def	tot	avg							
NORTHWOOD	11/8/13		25	1-6	.167	1-5	.200	2-2	1.000	0	6	6	6.0	4	1	0	0	0	5	5.0
at Oklahoma	11/11/13		8	1-3	.333	1-2	.500	0-0	.000	0	1	1	3.5	2	0	1	0	0	3	4.0
NICHOLLS STATE	11/14/13		28	6-8	.750	3-3	1.000	6-7	.857	1	9	10	5.7	4	0	0	0	0	21	9.7
vs Columbia	11/21/13		5	0-1	.000	0-1	.000	0-0	.000	0	0	0	4.3	0	0	0	0	0	0	7.3
at Portland	11/23/13		24	4-7	.571	3-5	.600	0-0	.000	1	2	3	4.0	5	0	2	0	1	11	8.0
INCARNATE WORD	11/26/13		11	1-2	.500	1-1	1.000	0-0	.000	1	3	4	4.0	2	0	0	0	1	3	7.2
at BYU	12/03/13		11	4-7	.571	3-5	.600	0-0	.000	0	6	6	4.3	4	2	1	1	0	11	7.7
STEPHEN F. AUSTIN	12/15/13	*	20	1-2	.500	0-0	.000	0-0	.000	0	3	3	4.1	4	0	1	0	0	2	7.0
CENTRAL ARKANSAS	12/17/13		27	1-5	.200	1-5	.200	3-4	.750	1	8	9	4.7	3	0	0	0	0	6	6.9
Totals		1	159	19-41	.463	13-27	.481	11-13	.846	4	38	42	4.7	28	3	5	1	2	62	6.9

Games played: 9  
Minutes/game: 17.7  
Points/game: 6.9  
FG Pct: 46.3  
3FG Pct: 48.1  
FT Pct: 84.6

Rebounds/game: 4.7  
Assists/game: 0.3  
Turnovers/game: 0.6  
Assist/turnover ratio: 0.6  
Steals/game: 0.2  
Blocks/game: 0.1

↳ **CAREER STATS**

Season	gp-gs	min/avg	Total		3-Point		F-Throws		Rebounds				Scoring							
			fg-fga	pct	fg-fga	pct	ft-fta	pct	off	def	tot	avg	pf	fo	ast	to	blk	stl	pts	avg
2013-14	9-1	159/17.7	19-41	.463	13-27	.481	11-13	.846	4	38	42	4.7	28	1	3	5	1	2	62	6.9
TOTAL	9-1	159/17.7	19-41	.463	13-27	.481	11-13	.846	4	38	42	4.7	28	1	3	5	1	2	62	6.9

# 2

## BRANDAN WALTON

Sr. ▶ G ▶ 6-2 ▶ 205  
Compton, CA ▶  
(Casper College)



### ↳ CAREER HIGHS

Points: 19, Arkansas State -- 01/28/12  
Rebounds: 8, Northwood -- 11/8/13  
Assists: 4, at FIU -- 02/09/12  
Steals: 4, Northwood -- 11/8/13  
Blocks: 1, at South Alabama -- 01/05/12  
FG made: 6, UALR -- 2/23/12  
FG attempts: 16, at UALR -- 02/23/12  
3FG made: 5, at ULM -- 01/14/12  
3FG attempts: 10, at UALR -- 02/23/12  
FT made: 6, Arkansas State -- 01/28/12  
FT attempts: 6, Northwood -- 11/8/13; Stephen F. Austin -- 12/15/13

### ↳ 2013-14 STATS

Opponent	Date	gs	min	Total		3-Pointers		Free throws		Rebounds				pf	a	t/o	blk	stl	pts	avg	
				fg-fga	pct	3fg-fga	pct	ft-fa	pct	off	def	tot	avg								
NORTHWOOD	11/8/13		22	4-12	.333	1-5	.200	4-6	.667	4	4	8	8.0	2	0	3	0	4	13	13.0	
at Oklahoma	11/11/13	*	29	3-9	.333	1-6	.167	1-2	.500	1	3	4	6.0	3	3	1	0	1	8	10.5	
NICHOLLS STATE	11/14/13	*	27	2-8	.250	0-3	.000	4-4	1.000	0	2	2	4.7	3	1	2	0	0	8	9.7	
vs Columbia	11/21/13	*	20	1-6	.167	0-3	.000	0-0	.000	2	4	6	5.0	2	0	1	0	2	2	7.8	
vs Idaho	11/22/13		18	0-2	.000	0-1	.000	0-2	.000	0	1	1	4.2	4	0	0	0	0	0	6.2	
at Portland	11/23/13	*	20	1-4	.250	1-4	.250	0-0	.000	0	0	0	3.5	4	0	1	0	1	3	5.7	
INCARNATE WORD	11/26/13	*	22	5-9	.556	4-5	.800	2-2	1.000	1	0	1	3.1	4	2	2	0	2	16	7.1	
SOUTHEASTERN LA.	11/30/13		14	1-4	.250	1-3	.333	0-0	.000	1	1	2	3.0	3	1	0	0	0	3	6.6	
at BYU	12/03/13		20	1-7	.143	1-5	.200	0-0	.000	0	4	4	3.1	3	0	0	0	0	3	6.2	
STEPHEN F. AUSTIN	12/15/13		20	2-4	.500	0-2	.000	3-6	.500	0	0	0	2.8	1	0	1	0	2	7	6.3	
CENTRAL ARKANSAS	12/17/13	*	10	1-1	1.000	1-1	1.000	0-0	.000	0	0	0	2.5	5	1	1	0	0	3	6.0	
<b>Totals</b>			6	222	21-66	.318	10-38	.263	14-22	.636	9	19	28	2.5	34	8	12	0	12	66	6.0

Games played: 11  
Minutes/game: 20.2  
Points/game: 6.0  
FG Pct: 31.8  
3FG Pct: 26.3  
FT Pct: 63.6

Rebounds/game: 2.5  
Assists/game: 0.7  
Turnovers/game: 1.1  
Assist/turnover ratio: 0.7  
Steals/game: 1.1

### ↳ CAREER STATS

Season	gp-gs	min/avg	Total		3-Point		F-Throws		Rebounds				Scoring							
			fg-fga	pct	fg-fga	pct	ft-fa	pct	off	def	tot	avg	pf	fo	ast	to	blk	stl	pts	avg
2011-12	32-17	792/24.8	92-237	.388	54-147	.367	42-63	.667	29	53	82	2.6	67	1	35	38	1	25	280	8.8
2012-13	1-0	1/1.0	0-0	.000	0-0	.000	0-0	.000	0	0	0	0.0	0	0	0	0	0	0	0	0.0
2013-14	11-6	222/20.2	21-66	.318	10-38	.263	14-22	.636	9	19	28	2.5	34	1	8	12	0	12	66	6.0
<b>TOTAL</b>	<b>44-23</b>	<b>1015/23.1</b>	<b>113-303</b>	<b>.373</b>	<b>64-185</b>	<b>.346</b>	<b>56-85</b>	<b>.659</b>	<b>38</b>	<b>72</b>	<b>110</b>	<b>2.5</b>	<b>101</b>	<b>2</b>	<b>43</b>	<b>50</b>	<b>1</b>	<b>37</b>	<b>346</b>	<b>7.9</b>

# 3

## ALZEE WILLIAMS

Sr. ▶ G ▶ 6-4 ▶ 182  
 Dallas, TX ▶  
 (Mississippi Elite Christian)



### ↳ CAREER HIGHS

Points: 30, Middle Tennessee -- 02/02/12  
 Rebounds: 8, Lehigh -- 12/20/12  
 Assists: 5, Arkansas State -- 01/28/12; at Middle Tennessee -- 12/31/12  
 Steals: 2, -- (5 Times); at Portland -- 11/23/13; Central Arkansas -- 12/17/13  
 Blocks: 1, -- (8 Times)  
 FG made: 10, Middle Tennessee -- 02/02/12  
 FG attempts: 19, Middle Tennessee -- 02/02/12  
 3FG made: 2, at UALR -- 01/10/13; at ULM -- 02/27/10; at Oklahoma -- 11/11/13  
 3FG attempts: 4, at Loyola Marymount -- 12/04/11  
 FT made: 12, Nicholls State -- 11/14/13  
 FT attempts: 15, Southeastern La. -- 11/30/13

### ↳ 2013-14 STATS

Opponent	Date	gs	min	Total		3-Pointers		Free throws		Rebounds				Other				pts	avg		
				fg-fga	pct	3fg-fga	pct	ft-fta	pct	off	def	tot	avg	pf	a	t/o	blk			stl	
NORTHWOOD	11/8/13	*	30	9-15	.600	0-0	.000	4-5	.800	3	0	3	3.0	3	0	0	0	0	22	22.0	
at Oklahoma	11/11/13	*	30	8-12	.667	2-2	1.000	6-9	.667	2	4	6	4.5	2	1	1	0	0	24	23.0	
NICHOLLS STATE	11/14/13	*	35	2-7	.286	0-0	.000	12-14	.857	0	3	3	4.0	1	4	3	0	0	16	20.7	
vs Columbia	11/21/13	*	31	4-9	.444	0-1	.000	4-4	1.000	2	1	3	3.8	1	2	0	0	1	12	18.5	
vs Idaho	11/22/13	*	31	5-13	.385	0-0	.000	4-4	1.000	4	1	5	4.0	3	3	1	0	1	14	17.6	
at Portland	11/23/13	*	48	4-11	.364	0-0	.000	2-5	.400	0	3	3	3.8	0	0	3	0	2	10	16.3	
INCARNATE WORD	11/26/13	*	29	6-11	.545	0-2	.000	2-4	.500	0	3	3	3.7	0	1	0	0	0	14	16.0	
SOUTHEASTERN LA.	11/30/13	*	34	4-9	.444	0-0	.000	10-15	.667	1	2	3	3.6	1	1	3	0	0	18	16.3	
at BYU	12/03/13	*	30	3-7	.429	0-0	.000	0-3	.000	1	2	3	3.6	1	0	1	0	1	6	15.1	
STEPHEN F. AUSTIN	12/15/13	*	34	1-9	.111	0-0	.000	6-8	.750	2	3	5	3.7	0	0	3	0	1	8	14.4	
CENTRAL ARKANSAS	12/17/13	*	34	3-10	.300	0-1	.000	4-4	1.000	0	2	2	3.5	1	2	1	0	2	10	14.0	
<b>Totals</b>			11	366	49-113	.434	2-6	.333	54-75	.720	15	24	39	3.5	13	14	16	0	8	154	14.0

Games played: 11  
 Minutes/game: 33.3  
 Points/game: 14.0  
 FG Pct: 43.4  
 3FG Pct: 33.3  
 FT Pct: 72.0

Rebounds/game: 3.5  
 Assists/game: 1.3  
 Turnovers/game: 1.5  
 Assist/turnover ratio: 0.9  
 Steals/game: 0.7

### ↳ CAREER STATS

Season	gp-gs	min/avg	Total		3-Point		F-Throws		Rebounds				Scoring							
			fg-fga	pct	fg-fga	pct	ft-fta	pct	off	def	tot	avg	pf	fo	ast	to	blk	stl	pts	avg
2009-10	32-0	244/7.6	21-64	.328	5-31	.161	14-22	.636	3	20	23	0.7	19	0	5	18	3	7	61	1.9
2011-12	32-30	1018/31.8	126-267	.472	5-21	.238	78-99	.788	36	73	109	3.4	36	0	54	41	2	17	335	10.5
2012-13	28-22	967/34.5	110-258	.426	5-17	.294	87-119	.731	39	55	94	3.4	29	0	40	35	3	13	312	11.1
2013-14	11-11	366/33.3	49-113	.434	2-6	.333	54-75	.720	15	24	39	3.5	13	0	14	16	0	8	154	14.0
<b>TOTAL</b>	<b>103-63</b>	<b>2595/25.2</b>	<b>306-702</b>	<b>.436</b>	<b>17-75</b>	<b>.227</b>	<b>233-315</b>	<b>.740</b>	<b>93</b>	<b>172</b>	<b>265</b>	<b>2.6</b>	<b>97</b>	<b>0</b>	<b>113</b>	<b>110</b>	<b>8</b>	<b>45</b>	<b>862</b>	<b>8.4</b>



# 4

## ARMANI FLANNIGAN

Jr. ▶ F ▶ 6-8 ▶ 200  
Rockford, IL ▶  
(Central Wyoming)



### ↳ CAREER HIGHS

Points: 7, Incarnate Word -- 11/26/13  
Rebounds: 6, Incarnate Word -- 11/26/13; Northwood -- 11/8/13  
Assists: 1, at Portland -- 11/23/13; Stephen F. Austin -- 12/15/13; Central Arkansas  
Steals: 1, 4 times  
Blocks: 3, vs Columbia -- 11/21/13  
FG made: 3, at BYU -- 12/03/13  
FG attempts: 3, 5 times  
FT made: 3, Incarnate Word -- 11/26/13  
FT attempts: 7, Northwood -- 11/8/13

### ↳ 2013-14 STATS

Opponent	Date	gs	min	Total		3-Pointers		Free throws		Rebounds				pf	a	t/o	blk	stl	pts	avg	
				fg-fga	pct	3fg-fga	pct	ft-fta	pct	off	def	tot	avg								
NORTHWOOD	11/8/13	*	16	1-1	1.000	0-0	.000	1-7	.143	1	5	6	6.0	3	0	1	2	1	3	3.0	
at Oklahoma	11/11/13		7	1-2	.500	0-0	.000	0-0	.000	0	0	0	3.0	1	0	1	1	0	2	2.5	
NICHOLLS STATE	11/14/13	*	12	0-1	.000	0-0	.000	1-2	.500	2	1	3	3.0	0	0	2	1	0	1	2.0	
vs Columbia	11/21/13		17	2-2	1.000	0-0	.000	0-0	.000	0	2	2	2.8	4	0	1	3	1	4	2.5	
vs Idaho	11/22/13		18	2-3	.667	0-0	.000	0-2	.000	0	0	0	2.2	3	0	1	2	0	4	2.8	
at Portland	11/23/13		4	0-1	.000	0-0	.000	0-0	.000	0	0	0	1.8	0	1	0	0	0	0	2.3	
INCARNATE WORD	11/26/13		20	2-2	1.000	0-0	.000	3-4	.750	4	2	6	2.4	1	0	1	1	1	7	3.0	
SOUTHEASTERN LA.	11/30/13		13	1-3	.333	0-0	.000	0-4	.000	1	3	4	2.6	0	0	1	1	0	2	2.9	
at BYU	12/03/13		5	3-3	1.000	0-0	.000	0-0	.000	0	1	1	2.4	0	0	0	1	1	6	3.2	
STEPHEN F. AUSTIN	12/15/13		12	2-3	.667	0-0	.000	1-3	.333	4	1	5	2.7	2	1	0	1	0	5	3.4	
CENTRAL ARKANSAS	12/17/13		13	1-3	.333	0-0	.000	1-2	.500	2	1	3	2.7	1	1	1	2	0	3	3.4	
<b>Totals</b>			<b>2</b>	<b>137</b>	<b>15-24</b>	<b>.625</b>	<b>0-0</b>	<b>.000</b>	<b>7-24</b>	<b>.292</b>	<b>14</b>	<b>16</b>	<b>30</b>	<b>2.7</b>	<b>15</b>	<b>3</b>	<b>9</b>	<b>15</b>	<b>4</b>	<b>37</b>	<b>3.4</b>

Games played: 11  
Minutes/game: 12.5  
Points/game: 3.4  
FG Pct: 62.5  
FT Pct: 29.2

Rebounds/game: 2.7  
Assists/game: 0.3  
Turnovers/game: 0.8  
Assist/turnover ratio: 0.3  
Steals/game: 0.4  
Blocks/game: 1.4

### ↳ CAREER STATS

Season	gp-gs	min/avg	Total		3-Point		F-Throws		Rebounds				Scoring							
			fg-fga	pct	fg-fga	pct	ft-fta	pct	off	def	tot	avg	pf	fo	ast	to	blk	stl	pts	avg
2013-14	11-2	137/12.5	15-24	.625	0-0	.000	7-24	.292	14	16	30	2.7	15	0	3	9	15	4	37	3.4
<b>TOTAL</b>	<b>11-2</b>	<b>137/12.5</b>	<b>15-24</b>	<b>.625</b>	<b>0-0</b>	<b>.000</b>	<b>7-24</b>	<b>.292</b>	<b>14</b>	<b>16</b>	<b>30</b>	<b>2.7</b>	<b>15</b>	<b>0</b>	<b>3</b>	<b>9</b>	<b>15</b>	<b>4</b>	<b>37</b>	<b>3.4</b>

# 5

## CHRIS JONES

Jr. ▶ G ▶ 6-2 ▶ 203  
Garland, TX ▶  
(Lakeview Centennial HS)



### ↳ CAREER HIGHS

Points: 31, at Texas Tech -- 11/16/11  
Rebounds: 12, St. Gregory's -- 11/11/11  
Assists: 10, Troy -- 12/31/11  
Steals: 6, UTA -- 11/28/12  
Blocks: 1, -- (4 Times)  
FG made: 9, at Texas Tech -- 11/16/11  
FG attempts: 21, at Texas Tech -- 11/16/11  
3FG made: 5, Jackson State -- 12/18/11  
3FG attempts: 6, at UTA -- 11/22/11; at Mississippi St -- 11/27/11  
FT made: 12, at Texas Tech -- 11/16/11  
FT attempts: 13, at Texas Tech -- 11/16/11; ULL -- 12/1/12

### ↳ 2013-14 STATS

Opponent	Date	qs	min	Total		3-Pointers		Free throws		Rebounds				pf	a	t/o	blk	stl	pts	avg	
				fg-fga	pct	3fg-fga	pct	ft-fta	pct	off	def	tot	avg								
NORTHWOOD	11/8/13	*	28	5-10	.500	0-1	.000	3-4	.750	2	4	6	6.0	3	4	5	0	1	13	13.0	
at Oklahoma	11/11/13		31	7-14	.500	2-2	1.000	0-1	.000	2	3	5	5.5	5	3	2	0	1	16	14.5	
NICHOLLS STATE	11/14/13		13	0-2	.000	0-0	.000	5-6	.833	0	2	2	4.3	1	2	2	0	2	5	11.3	
vs Columbia	11/21/13	*	31	3-12	.250	0-3	.000	2-3	.667	3	3	6	4.8	0	4	1	0	4	8	10.5	
vs Idaho	11/22/13	*	20	3-7	.429	0-1	.000	0-0	.000	0	0	0	3.8	0	1	1	0	0	6	9.6	
at Portland	11/23/13	*	42	5-10	.500	1-1	1.000	1-3	.333	1	9	10	4.8	4	6	3	0	2	12	10.0	
INCARNATE WORD	11/26/13	*	22	1-4	.250	0-1	.000	2-2	1.000	1	7	8	5.3	3	7	3	0	1	4	9.1	
SOUTHEASTERN LA.	11/30/13	*	28	4-8	.500	1-1	1.000	5-5	1.000	1	1	2	4.9	3	3	0	0	1	14	9.8	
at BYU	12/03/13	*	21	3-12	.250	0-0	.000	3-5	.600	0	2	2	4.6	3	6	3	0	0	9	9.7	
STEPHEN F. AUSTIN	12/15/13	*	4	0-0	.000	0-0	.000	0-0	.000	0	2	2	4.3	1	0	2	0	0	0	8.7	
Totals			8	240	31-79	.392	4-10	.400	21-29	.724	10	33	43	4.3	23	36	22	0	12	87	8.7

Games played: 10  
Minutes/game: 24.0  
Points/game: 8.7  
FG Pct: 39.2  
3FG Pct: 40.0  
FT Pct: 72.4

Rebounds/game: 4.3  
Assists/game: 3.6  
Turnovers/game: 2.2  
Assist/turnover ratio: 1.6  
Steals/game: 1.2

### ↳ CAREER STATS

Season	gp-gs	min/avg	Total		3-Point		F-Throws		Rebounds				Scoring							
			fg-fga	pct	fg-fga	pct	ft-fta	pct	off	def	tot	avg	pf	fo	ast	to	blk	stl	pts	avg
2011-12	19-19	558/29.4	97-222	.437	18-64	.281	55-71	.775	11	78	89	4.7	40	0	81	70	4	45	267	14.1
2012-13	16-14	437/27.3	54-140	.386	3-18	.167	36-55	.655	13	45	58	3.6	44	1	74	46	0	34	147	9.2
2013-14	10-8	240/24.0	31-79	.392	4-10	.400	21-29	.724	10	33	43	4.3	23	1	36	22	0	12	87	8.7
TOTAL	45-41	1235/27.4	182-441	.413	25-92	.272	112-155	.723	34	156	190	4.2	107	2	191	138	4	91	501	11.1

# 10

## AUSTIN MITCHELL

So. ▶ G ▶ 6-1 ▶ 180  
 Plano, TX ▶  
 (Plano HS)



### ↳ CAREER HIGHS

Rebounds: 1, -- (4 Times)  
 Steals: 1, Lamar -- 11/13/12  
 FG attempts: 1, at Creighton -- 11/09/12

### ↳ EXPECTED TO REDSHIRT THE 2013-14 SEASON

### ↳ CAREER STATS

Season	gp-gs	min/avg	Total		3-Point		F-Throws		Rebounds				Scoring							
			fg-fga	pct	fg-fga	pct	ft-fta	pct	off	def	tot	avg	pf	fo	ast	to	blk	stl	pts	avg
2012-13	19-0	18/0.9	0-1	.000	0-0	.000	0-0	.000	1	2	3	0.2	0	0	0	2	0	1	0	0.0
TOTAL	19-0	18/0.9	0-1	.000	0-0	.000	0-0	.000	1	2	3	0.2	0	0	0	2	0	1	0	0.0

# 21

**T.J.  
TAYLOR**

Jr. ▶ G ▶ 6-3 ▶ 215  
Denison, TX ▶  
(Marquette)



### ↳ CAREER HIGHS

Points: 24, vs Idaho -- 11/22/13  
Rebounds: 7, vs Idaho -- 11/22/13  
Assists: 2, 5 times  
Steals: 2, vs Idaho -- 11/22/13  
Blocks: 1, at Portland -- 11/23/13; Southeastern La. -- 11/30/13  
FG made: 9, vs Idaho -- 11/22/13  
FG attempts: 14, at Portland -- 11/23/13  
3FG made: 3, vs Idaho -- 11/22/13; at Portland -- 11/23/13  
3FG attempts: 4, vs Idaho -- 11/22/13; at Portland -- 11/23/13  
FT made: 6, at Portland -- 11/23/13  
FT attempts: 9, at Portland -- 11/23/13

### ↳ 2013-14 STATS

Opponent	Date	gs	min	Total		3-Pointers		Free throws		Rebounds				pf	a	t/o	blk	stl	pts	avg
				fg-fga	pct	3fg-fga	pct	ft-fta	pct	off	def	tot	avg							
NICHOLLS STATE	11/14/13	7		1-1	1.000	0-0	.000	0-0	.000	1	0	1	1.0	1	0	1	0	0	2	2.0
vs Columbia	11/21/13	3		0-0	.000	0-0	.000	0-0	.000	0	0	0	0.5	1	0	1	0	0	0	1.0
vs Idaho	11/22/13	24		9-11	.818	3-4	.750	3-4	.750	5	2	7	2.7	1	2	0	0	2	24	8.7
at Portland	11/23/13	35		6-14	.429	3-4	.750	6-9	.667	1	2	3	2.8	1	2	1	1	0	21	11.8
INCARNATE WORD	11/26/13	20		0-6	.000	0-1	.000	1-4	.250	1	2	3	2.8	2	2	3	0	1	1	9.6
SOUTHEASTERN LA.	11/30/13	24		2-4	.500	0-2	.000	0-0	.000	2	1	3	2.8	1	0	0	1	0	4	8.7
at BYU	12/03/13	19		4-8	.500	1-3	.333	0-2	.000	1	0	1	2.6	2	2	1	0	2	9	8.7
STEPHEN F. AUSTIN	12/15/13	24		2-5	.400	0-1	.000	0-1	.000	0	1	1	2.4	4	0	4	0	1	4	8.1
CENTRAL ARKANSAS	12/17/13	29		4-8	.500	1-3	.333	1-3	.333	0	2	2	2.3	3	2	2	0	0	10	8.3
Totals		0	185	28-57	.491	8-18	.444	11-23	.478	11	10	21	2.3	16	10	13	2	6	75	8.3

Games played: 9  
Minutes/game: 20.6  
Points/game: 8.3  
FG Pct: 49.1  
3FG Pct: 44.4  
FT Pct: 47.8

Rebounds/game: 2.3  
Assists/game: 1.1  
Turnovers/game: 1.4  
Assist/turnover ratio: 0.8  
Steals/game: 0.7  
Blocks/game: 0.2

### ↳ CAREER STATS

Season	gp-gs	min/avg	Total		3-Point		F-Throws		Rebounds				Scoring							
			fg-fga	pct	fg-fga	pct	ft-fta	pct	off	def	tot	avg	pf	fo	ast	to	blk	stl	pts	avg
2013-14	9-0	185/20.6	28-57	.491	8-18	.444	11-23	.478	11	10	21	2.3	16	0	10	13	2	6	75	8.3
TOTAL	9-0	185/20.6	28-57	.491	8-18	.444	11-23	.478	11	10	21	2.3	16	0	10	13	2	6	75	8.3

# 22

**GREG  
WESLEY**

Fr. ▶ F ▶ 6-7 ▶ 190  
Arlington, TX ▶  
(Seguin HS)



↳ **CAREER HIGHS**

↳ **2013-14 STATS**

↳ **CAREER STATS**

# 23

## JORDAN WILLIAMS

Jr. ▶ G ▶ 6-6 ▶ 202  
Dallas ▶  
(Kimball HS)



### ↳ CAREER HIGHS

Points: 31, at ULL -- 01/31/13  
Rebounds: 10, Southeastern La. -- 11/30/13; Northwood -- 11/8/13  
Assists: 5, La Sierra -- 12/2/11  
Steals: 4, at Mississippi St -- 11/27/11  
Blocks: 3, ULM -- 1/5/13; Cameron -- 11/16/12  
FG made: 12, at ULL -- 01/31/13  
FG attempts: 19, Western Kentucky -- 02/7/13  
3FG made: 7, at Troy -- 02/16/13  
3FG attempts: 9, at Troy -- 02/16/13  
FT made: 8, at Florida Atlantic -- 1/19/13; Middle Tennessee -- 1/24/13  
FT attempts: 11, at ULL -- 01/31/13

### ↳ 2013-14 STATS

Opponent	Date	gs	min	Total		3-Pointers		Free throws		Rebounds				pf	a	t/o	blk	stl	pts	avg	
				fg-fga	pct	3fg-fga	pct	ft-fta	pct	off	def	tot	avg								
NORTHWOOD	11/8/13	*	35	4-12	.333	0-3	.000	1-1	1.000	4	6	10	10.0	1	1	3	0	1	9	9.0	
at Oklahoma	11/11/13		28	4-11	.364	2-5	.400	3-3	1.000	0	3	3	6.5	1	1	2	0	1	13	11.0	
NICHOLLS STATE	11/14/13		24	4-10	.400	3-4	.750	3-3	1.000	1	5	6	6.3	3	0	1	0	0	14	12.0	
vs Columbia	11/21/13		29	4-9	.444	1-2	.500	2-4	.500	2	3	5	6.0	2	0	1	0	2	11	11.8	
vs Idaho	11/22/13		30	3-10	.300	0-4	.000	3-6	.500	2	6	8	6.4	2	0	1	2	1	9	11.2	
at Portland	11/23/13		21	4-9	.444	0-2	.000	0-0	.000	0	5	5	6.2	1	0	1	2	1	8	10.7	
INCARNATE WORD	11/26/13		23	7-14	.500	1-2	.500	4-6	.667	3	5	8	6.4	3	0	0	2	1	19	11.9	
SOUTHEASTERN LA.	11/30/13		28	4-10	.400	1-4	.250	6-6	1.000	3	7	10	6.9	4	0	1	1	1	15	12.3	
at BYU	12/03/13		10	3-14	.214	0-5	.000	1-2	.500	3	2	5	6.7	0	0	1	0	2	7	11.7	
STEPHEN F. AUSTIN	12/15/13	*	35	4-12	.333	1-3	.333	5-6	.833	1	6	7	6.7	4	1	5	1	2	14	11.9	
CENTRAL ARKANSAS	12/17/13	*	27	4-9	.444	1-4	.250	2-3	.667	3	2	5	6.5	2	0	4	0	0	11	11.8	
Totals			3	290	45-120	.375	10-38	.263	30-40	.750	22	50	72	6.5	23	3	20	8	12	130	11.8

Games played: 11  
Minutes/game: 26.4  
Points/game: 11.8  
FG Pct: 37.5  
3FG Pct: 26.3  
FT Pct: 75.0

Rebounds/game: 6.5  
Assists/game: 0.3  
Turnovers/game: 1.8  
Assist/turnover ratio: 0.2  
Steals/game: 1.1  
Blocks/game: 0.7

### ↳ CAREER STATS

Season	gp-gs	min/avg	Total		3-Point		F-Throws		Rebounds				Scoring							
			fg-fga	pct	fg-fga	pct	ft-fta	pct	off	def	tot	avg	pf	fo	ast	to	blk	stl	pts	avg
2011-12	19-13	480/25.3	71-173	.410	23-84	.274	42-54	.778	36	40	76	4.0	39	0	25	41	9	21	207	10.9
2012-13	32-28	1014/31.7	153-368	.416	46-135	.341	101-138	.732	50	69	119	3.7	72	2	23	69	18	23	453	14.2
2013-14	11-3	290/26.4	45-120	.375	10-38	.263	30-40	.750	22	50	72	6.5	23	0	3	20	8	12	130	11.8
TOTAL	62-44	1784/28.8	269-661	.407	79-257	.307	173-232	.746	108	159	267	4.3	134	2	51	130	35	56	790	12.7

# 24

## KELVIN GAINES

Jr. ▶ F ▶ 6-10 ▶ 240  
 Ocala, FL ▶  
 (Cincinnati)



### ↳ CAREER HIGHS

Rebounds: 1, Stephen F. Austin – 12/15/13  
 FG attempts: 2, Stephen F. Austin – 12/15/13

### ↳ 2013-14 STATS

Opponent	Date	gs	min	Total		3-Pointers		Free throws		Rebounds				pf	a	t/o	blk	stl	pts	avg
				fg-fga	pct	3fg-fga	pct	ft-fta	pct	off	def	tot	avg							
STEPHEN F. AUSTIN	12/15/13	3	3	0-2	.000	0-0	.000	0-0	.000	1	0	1	1.0	0	0	1	0	0	0	0.0
<b>Totals</b>		0	3	0-2	.000	0-0	.000	0-0	.000	1	0	1	1.0	0	0	1	0	0	0	0.0

Games played: 1  
 Minutes/game: 3.0  
 FG Pct: 0.0

Rebounds/game: 1.0  
 Turnovers/game: 1.0

### ↳ CAREER STATS

Season	gp-gs	min/avg	Total		3-Point		F-Throws		Rebounds				Scoring							
			fg-fga	pct	fg-fga	pct	ft-fta	pct	off	def	tot	avg	pf	fo	ast	to	blk	stl	pts	avg
2013-14	1-0	3/3.0	0-2	.000	0-0	.000	0-0	.000	1	0	1	1.0	0	0	0	1	0	0	0	0.0
<b>TOTAL</b>	1-0	3/3.0	0-2	.000	0-0	.000	0-0	.000	1	0	1	1.0	0	0	0	1	0	0	0	0.0

# 33

## COLIN VOSS

Jr. ▶ F ▶ 6-7 ▶ 240  
Grand Rapids, MI ▶  
(Northern Oklahoma)



### ↳ CAREER HIGHS

Points: 13, Central Arkansas -- 12/17/13  
Rebounds: 12, Southeastern La. -- 11/30/13  
Assists: 2, Southeastern La. -- 11/30/13  
Steals: 1, 4 times  
Blocks: 1, Incarnate Word -- 11/26/13  
FG made: 3, vs Idaho -- 11/22/13; at Portland -- 11/23/13; Central Arkansas  
FG attempts: 6, 4 times  
FT made: 7, Central Arkansas -- 12/17/13  
FT attempts: 10, Central Arkansas -- 12/17/13

### ↳ 2013-14 STATS

Opponent	Date	gs	min	Total		3-Pointers		Free throws		Rebounds				pf	a	t/o	blk	stl	pts	avg	
				fg-fga	pct	3fg-fga	pct	ft-fta	pct	off	def	tot	avg								
NORTHWOOD	11/8/13		15	0-5	.000	0-0	.000	2-2	1.000	1	1	2	2.0	1	1	1	0	1	2	2.0	
at Oklahoma	11/11/13	*	16	0-1	.000	0-0	.000	0-0	.000	1	4	5	3.5	3	0	3	0	0	0	1.0	
NICHOLLS STATE	11/14/13		13	0-0	.000	0-0	.000	0-0	.000	3	1	4	3.7	0	1	2	0	0	0	0.7	
vs Columbia	11/21/13	*	24	2-6	.333	0-0	.000	1-2	.500	2	2	4	3.8	1	0	1	0	0	5	1.8	
vs Idaho	11/22/13	*	20	3-6	.500	0-0	.000	2-2	1.000	4	4	8	4.6	1	1	1	0	0	8	3.0	
at Portland	11/23/13	*	28	3-6	.500	0-0	.000	0-0	.000	0	6	6	4.8	1	0	2	0	1	6	3.5	
INCARNATE WORD	11/26/13	*	14	1-2	.500	0-0	.000	3-4	.750	0	5	5	4.9	1	0	1	1	0	5	3.7	
SOUTHEASTERN LA.	11/30/13	*	26	2-6	.333	0-0	.000	1-2	.500	2	10	12	5.8	3	2	2	0	0	5	3.9	
at BYU	12/03/13	*	31	1-4	.250	0-0	.000	0-0	.000	1	2	3	5.4	2	0	0	0	1	2	3.7	
STEPHEN F. AUSTIN	12/15/13	*	25	1-1	1.000	0-0	.000	0-2	.000	1	0	1	5.0	2	0	3	0	1	2	3.5	
CENTRAL ARKANSAS	12/17/13	*	26	3-3	1.000	0-0	.000	7-10	.700	3	8	11	5.5	1	1	1	0	0	13	4.4	
<b>Totals</b>			<b>9</b>	<b>238</b>	<b>16-40</b>	<b>.400</b>	<b>0-0</b>	<b>.000</b>	<b>16-24</b>	<b>.667</b>	<b>18</b>	<b>43</b>	<b>61</b>	<b>5.5</b>	<b>16</b>	<b>6</b>	<b>17</b>	<b>1</b>	<b>4</b>	<b>48</b>	<b>4.4</b>

Games played: 11  
Minutes/game: 21.6  
Points/game: 4.4  
FG Pct: 40.0  
FT Pct: 66.7

Rebounds/game: 5.5  
Assists/game: 0.5  
Turnovers/game: 1.5  
Assist/turnover ratio: 0.4  
Steals/game: 0.4  
Blocks/game: 0.1

### ↳ CAREER STATS

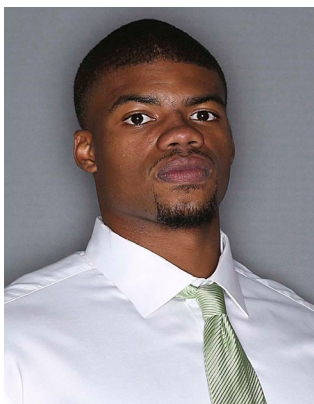
Season	gp-gs	min/avg	Total		3-Point		F-Throws		Rebounds				Scoring							
			fg-fga	pct	fg-fga	pct	ft-fta	pct	off	def	tot	avg	pf	fo	ast	to	blk	stl	pts	avg
2013-14	11-9	238/21.6	16-40	.400	0-0	.000	16-24	.667	18	43	61	5.5	16	0	6	17	1	4	48	4.4
<b>TOTAL</b>	<b>11-9</b>	<b>238/21.6</b>	<b>16-40</b>	<b>.400</b>	<b>0-0</b>	<b>.000</b>	<b>16-24</b>	<b>.667</b>	<b>18</b>	<b>43</b>	<b>61</b>	<b>5.5</b>	<b>16</b>	<b>0</b>	<b>6</b>	<b>17</b>	<b>1</b>	<b>4</b>	<b>48</b>	<b>4.4</b>



# 44

## KEITH COLEMAN

Jr. ▶ F ▶ 6-10 ▶ 250  
Philadelphia, PA ▶  
(Marshalltown CC)



### ↳ CAREER HIGHS

Points: 14, at Oklahoma -- 11/11/13  
Rebounds: 10, at Oklahoma -- 11/11/13  
Assists: 1, Northwood -- 11/8/13  
Steals: 1, Northwood -- 11/8/13; Central Arkansas -- 12/17/13  
Blocks: 4, Incarnate Word -- 11/26/13  
FG made: 6, at Oklahoma -- 11/11/13  
FG attempts: 11, at Oklahoma -- 11/11/13  
FT made: 3, at ULL -- 01/31/13  
FT attempts: 6, Incarnate Word -- 11/26/13

### ↳ 2013-14 STATS

Opponent	Date	gs	min	Total		3-Pointers		Free throws		Rebounds				pf	a	t/o	blk	stl	pts	avg	
				fg-fga	pct	3fg-fga	pct	ft-fta	pct	off	def	tot	avg								
NORTHWOOD	11/8/13	*	13	0-2	.000	0-0	.000	1-2	.500	2	1	3	3.0	4	1	0	2	1	1	1.0	
at Oklahoma	11/11/13	*	28	6-11	.545	0-0	.000	2-3	.667	3	7	10	6.5	4	0	3	1	0	14	7.5	
NICHOLLS STATE	11/14/13	*	19	4-6	.667	0-0	.000	0-0	.000	2	6	8	7.0	3	0	2	1	0	8	7.7	
vs Columbia	11/21/13	*	20	3-10	.300	0-0	.000	0-0	.000	0	5	5	6.5	0	0	0	1	0	6	7.3	
vs Idaho	11/22/13	*	16	1-5	.200	0-0	.000	1-2	.500	1	3	4	6.0	0	0	4	0	0	3	6.4	
at Portland	11/23/13	*	28	3-6	.500	0-0	.000	0-1	.000	1	5	6	6.0	4	0	2	1	0	6	6.3	
INCARNATE WORD	11/26/13	*	20	1-3	.333	0-0	.000	2-6	.333	1	4	5	5.9	2	0	0	4	0	4	6.0	
SOUTHEASTERN LA.	11/30/13	*	16	5-7	.714	0-0	.000	0-0	.000	0	4	4	5.6	4	0	2	1	0	10	6.5	
at BYU	12/03/13	*	29	2-3	.667	0-0	.000	1-2	.500	2	4	6	5.7	3	0	3	3	0	5	6.3	
CENTRAL ARKANSAS	12/17/13	*	15	2-3	.667	0-0	.000	0-0	.000	1	4	5	5.6	1	0	1	0	1	4	6.1	
<b>Totals</b>			<b>10</b>	<b>204</b>	<b>27-56</b>	<b>.482</b>	<b>0-0</b>	<b>.000</b>	<b>7-16</b>	<b>.438</b>	<b>13</b>	<b>43</b>	<b>56</b>	<b>5.6</b>	<b>25</b>	<b>1</b>	<b>17</b>	<b>14</b>	<b>2</b>	<b>61</b>	<b>6.1</b>

Games played: 10  
Minutes/game: 20.4  
Points/game: 6.1  
FG Pct: 48.2  
FT Pct: 43.8

Rebounds/game: 5.6  
Assists/game: 0.1  
Turnovers/game: 1.7  
Assist/turnover ratio: 0.1  
Steals/game: 0.2  
Blocks/game: 1.4

### ↳ CAREER STATS

Season	gp-gs	min/avg	Total		3-Point		F-Throws		Rebounds				Scoring							
			fg-fga	pct	fg-fga	pct	ft-fta	pct	off	def	tot	avg	pf	fo	ast	to	blk	stl	pts	avg
2012-13	30-1	254/8.5	16-46	.348	0-0	.000	8-18	.444	13	36	49	1.6	41	0	4	24	11	4	40	1.3
2013-14	10-10	204/20.4	27-56	.482	0-0	.000	7-16	.438	13	43	56	5.6	25	0	1	17	14	2	61	6.1
<b>TOTAL</b>	<b>40-11</b>	<b>458/11.5</b>	<b>43-102</b>	<b>.422</b>	<b>0-0</b>	<b>.000</b>	<b>15-34</b>	<b>.441</b>	<b>26</b>	<b>79</b>	<b>105</b>	<b>2.6</b>	<b>66</b>	<b>0</b>	<b>5</b>	<b>41</b>	<b>25</b>	<b>6</b>	<b>101</b>	<b>2.5</b>

**2012-13 SEASON STATS TEAM/INDIVIDUAL**

RECORD:	OVERALL	HOME	AWAY	NEUTRAL
ALL GAMES	6-5	5-1	1-2	0-2
CONFERENCE	0-0	0-0	0-0	0-0
NON-CONFERENCE	6-5	5-1	1-2	0-2

#	Player	gp-gs	min	avg	Total		3-Point		F-Throw		Rebounds			pf	dq	a	to	blk	stl	pts	avg		
					fg-fga	fg%	3fg-fga	3fg%	ft-fta	ft%	off	def	tot									avg	
03	WILLIAMS, Alzee	11-11	366	33.3	49-113	.434	2-6	.333	54-75	.720	15	24	39	3.5	13	0	14	16	0	8	154	14.0	
23	WILLIAMS, Jordan	11-3	290	26.4	45-120	.375	10-38	.263	30-40	.750	22	50	72	6.5	23	0	3	20	8	12	130	11.8	
00	VAUGHNS, Vertrail	10-5	206	20.6	23-70	.329	9-29	.310	33-40	.825	3	16	19	1.9	23	0	17	18	1	8	88	8.8	
05	JONES, Chris	10-8	240	24.0	31-79	.392	4-10	.400	21-29	.724	10	33	43	4.3	23	1	36	22	0	12	87	8.7	
21	TAYLOR, T.J.	9-0	185	20.6	28-57	.491	8-18	.444	11-23	.478	11	10	21	2.3	16	0	10	13	2	6	75	8.3	
01	ANIEFIOK, Maurice	9-1	159	17.7	19-41	.463	13-27	.481	11-13	.846	4	38	42	4.7	28	1	3	5	1	2	62	6.9	
44	COLEMAN, Keith	10-10	204	20.4	27-56	.482	0-0	.000	7-16	.438	13	43	56	5.6	25	0	1	17	14	2	61	6.1	
02	WALTON, Brandon	11-6	222	20.2	21-66	.318	10-38	.263	14-22	.636	9	19	28	2.5	34	1	8	12	0	12	66	6.0	
33	VOSS, Colin	11-9	238	21.6	16-40	.400	0-0	.000	16-24	.667	18	43	61	5.5	16	0	6	17	1	4	48	4.4	
04	FLANNIGAN, Armani	11-2	137	12.5	15-24	.625	0-0	.000	7-24	.292	14	16	30	2.7	15	0	3	9	15	4	37	3.4	
24	GAINES, Kelvin	1-0	3	3.0	0-2	.000	0-0	.000	0-0	.000	1	0	1	1.0	0	0	0	1	0	0	0	0.0	
Team											21	22	43										
Total.....		11	2250		274-668	.410	56-166	.337	204-306	.667	141	314	455	41.4	216	3	101	150	42	70	808	73.5	
Opponents.....		11	2250		299-702	.426	67-191	.351	171-252	.679	128	309	437	39.7	230	-	129	132	46	75	836	76.0	

TEAM STATISTICS	NT	OPP	Date	Opponent	Score	Att.
SCORING	808	836	11/8/13	NORTHWOOD	w 72-67	2236
Points per game	73.5	76.0	11/11/13	at Oklahoma	L 82-95	9288
Scoring margin	-2.5	-	11/14/13	NICHOLLS STATE	w 92-78	2146
FIELD GOALS-ATT	274-668	299-702	11/21/13	vs Columbia	L 66-70	0
Field goal pct	.410	.426	11/22/13	vs Idaho	L 76-87	0
3 POINT FG-ATT	56-166	67-191	11/23/13	at Portland	Wo2 77-72	1668
3-point FG pct	.337	.351	11/26/13	INCARNATE WORD	w 84-67	2148
3-pt FG made per game	5.1	6.1	11/30/13	SOUTHEASTERN LA.	w 75-61	1861
FREE THROWS-ATT	204-306	171-252	12/03/13	at BYU	L 67-97	13908
Free throw pct	.667	.679	12/15/13	STEPHEN F. AUSTIN	L 53-87	1238
F-Throws made per game	18.5	15.5	12/17/13	CENTRAL ARKANSAS	w 64-55	3664
REBOUNDS	455	437	* - Conference game			
Rebounds per game	41.4	39.7				
Rebounding margin	+1.6	-				
ASSISTS	101	129				
Assists per game	9.2	11.7				
TURNOVERS	150	132				
Turnovers per game	13.6	12.0				
Turnover margin	-1.6	-				
Assist/turnover ratio	0.7	1.0				
STEALS	70	75				
Steals per game	6.4	6.8				
BLOCKS	42	46				
Blocks per game	3.8	4.2				
ATTENDANCE	13293	24864				
Home games-Avg/Game	6-2216	3-8288				
Neutral site-Avg/Game	-	2-0				

Score by Periods	1st	2nd	OT	OT2	Totals
North Texas	365	419	10	14	808
Opponents	381	436	10	9	836

**2012-13 GAME-BY-GAME**

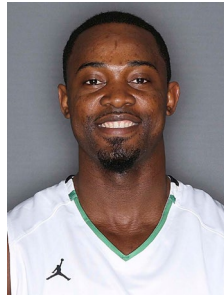
Opponent	1st	2nd	Score	Mar	Total FG	FG Pct	3-Pointers	3FG Pct	Free Throws	FT Pct	Rebounds	Assist	T/Over	Block	Steal	Fouls
NORTHWOOD	35/33	37/34	72-67	+5	25-69/21-61	.362/.344	3-17/5-19	.176/.263	19-31/20-30	.613/.667	57/41 +16	10/6	14/16	4/5	9/8	23/27
Oklahoma	38/48	44/47	82-95	(13)	30-67/36-68	.448/.529	8-18/8-18	.444/.444	14-20/15-24	.700/.625	39/36 +3	13/15	16/11	2/5	4/10	22/18
NICHOLLS STATE	38/36	54/42	92-78	+14	23-47/28-65	.489/.431	7-11/8-22	.636/.364	39-46/14-25	.848/.560	44/26 +18	9/12	16/6	2/2	3/8	18/29
Columbia	29/39	37/31	66-70	(4)	24-66/24-51	.364/.471	5-16/12-22	.313/.545	13-18/10-14	.722/.714	34/36 (2)	6/12	7/16	4/1	11/5	14/13
Idaho	33/42	43/45	76-87	(11)	29-66/33-66	.439/.500	3-14/8-18	.214/.444	15-26/13-14	.577/.929	38/39 (1)	8/10	11/11	4/5	5/6	18/21
Portland	20/28	33/25	77-72	+5	30-68/27-73	.441/.370	8-16/3-18	.500/.167	9-18/15-27	.500/.556	39/56 (17)	9/14	15/16	4/7	8/9	20/20
INCARNATE WORD	42/16	42/51	84-67	+17	26-59/23-71	.441/.324	7-15/5-16	.467/.313	25-38/16-19	.658/.842	47/44 +3	13/11	10/13	8/3	7/3	21/23
SOUTHEASTERN LA.	41/27	34/34	75-61	+14	25-56/21-61	.446/.344	3-11/3-16	.273/.188	22-32/16-27	.688/.593	45/37 +8	8/8	11/9	5/3	2/1	22/23
BYU	35/42	32/55	67-97	(30)	28-79/38-77	.354/.494	6-23/4-12	.261/.333	5-14/17-24	.357/.708	38/60 (22)	13/24	12/15	5/5	8/7	20/15
STEPHEN F. AUSTIN	24/47	29/40	53-87	(34)	15-43/27-56	.349/.482	2-9/7-19	.222/.368	21-33/26-29	.636/.897	31/34 (3)	2/12	22/10	2/8	9/8	21/23
CENTRAL ARKANSAS	30/23	34/32	64-55	+9	19-48/21-53	.396/.396	4-16/4-11	.250/.364	22-30/9-19	.733/.474	43/28 +15	10/5	16/9	2/2	4/10	17/18

Note: Game totals are displayed in the format TEAM/OPPONENT for each category

RADIO-TV CHART



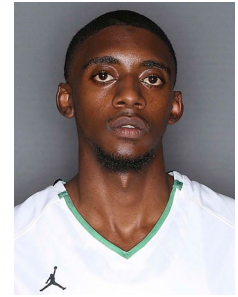
**0** Vertrail Vaughns  
6-2 • 194 • Sr. • G  
Mesquite, Texas



**1** Maurice Aniefiok  
6-5 • 212 • So. • G/F  
Lagos, Nigeria



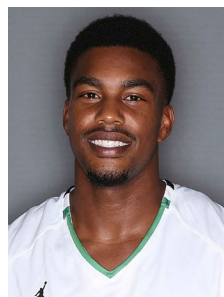
**2** Brandan Walton  
6-2 • 205 • Sr. • G  
Compton, Calif.



**3** Alzee Williams  
6-4 • 182 • Sr. • G  
Dallas



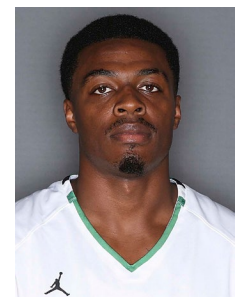
**4** Armani Flannigan  
6-8 • 200 • Jr. • F  
Rockford, Ill.



**5** Chris Jones  
6-2 • 203 • Jr. • G  
Garland, Texas



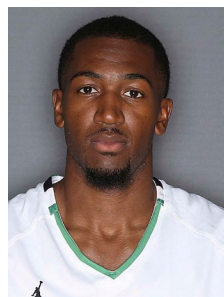
**10** Austin Mitchell  
6-1 • 180 • So. • G  
Plano, Texas



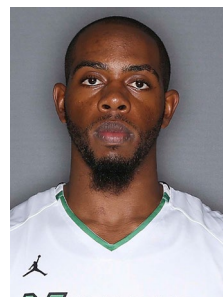
**21** T.J. Taylor  
6-3 • 215 • Jr. • G  
Denison, Texas



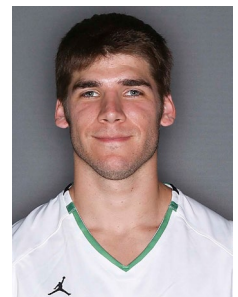
**22** Greg Wesley  
6-7 • 190 • Fr. • F  
Arlington, Texas



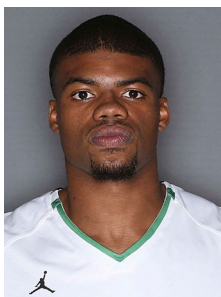
**23** Jordan Williams  
6-6 • 202 • Jr. • G  
Dallas



**24** Kelvin Gaines  
6-10 • 240 • Jr. • F/C  
Ocala, Fla.



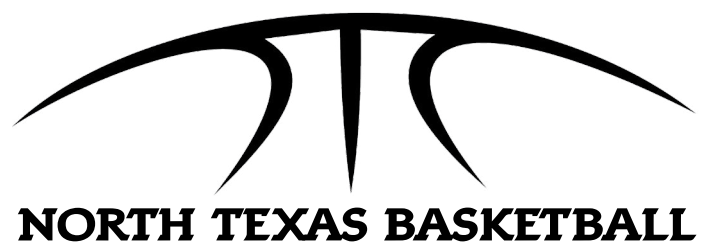
**33** Colin Voss  
6-7 • 240 • Jr. • F  
Grand Rapids, Mich.



**44** Keith Coleman  
6-10 • 250 • Jr. • F  
Philadelphia



**HEAD COACH**  
Tony Benford



**NORTH TEXAS BASKETBALL**