



# UTSA

## 2015 volleyball

Volleyball Contact: Zena Rex | zena.rex@utsa.edu | (956) 739-4878

### 2015 Schedule

Overall: 9-5 | Home: 1-1 | Away: 1-3 | Neutral: 7-1 | C-USA: 0-0

Date	Opponent	Location	Time
8/28	Montana State !	Huntsville, Texas	W, 3-0
8/28	Prairie View A&M !	Huntsville, Texas	W, 3-0
8/29	Sam Houston State !	Huntsville, Texas	W, 3-2
8/29	Tulane !	Huntsville, Texas	W, 3-0
9/3	Texas State #	San Marcos, Texas	L, 3-2
9/4	Indiana #	San Marcos, Texas	W, 3-1
9/5	Texas Southern #	San Marcos, Texas	W, 3-0
9/7	<b>#12 Oregon</b>	<b>Convocation Center</b>	<b>W, 3-1</b>
9/10	<b>Santa Clara</b>	<b>Convocation Center</b>	<b>L, 3-1</b>
9/11	#4 Texas \$	Austin, Texas	L, 3-0
9/11	Iona \$	Austin, Texas	W, 3-0
9/18	TCU %	Dallas, Texas	L, 3-1
9/18	Clemson %	Dallas, Texas	W, 3-2
9/19	(RV) SMU %	Dallas, Texas	L, 3-1
9/22	Rice * (rescheduled)	Houston, Texas	6 p.m.
9/25	<b>Middle Tennessee *</b>	<b>Convocation Center</b>	<b>6 p.m.</b>
9/27	<b>North Texas *</b>	<b>Convocation Center</b>	<b>1 p.m.</b>
10/2	UAB *	Birmingham, Ala.	7 p.m.
10/9	WKU *	Bowling Green, Ky.	7 p.m.
10/11	UTEP *	El Paso, Texas	2 p.m.
10/16	Rice *	<b>Convocation Center</b>	<b>6 p.m.</b>
10/18	Marshall *	<b>Convocation Center</b>	<b>11:30 a.m.</b>
10/21	Charlotte *	<b>Convocation Center</b>	<b>6 p.m.</b>
10/25	UTEP *	<b>Convocation Center</b>	<b>1 p.m.</b>
10/30	Florida Atlantic *	Boca Raton, Fla.	5 p.m.
11/1	FIU *	Miami, Fla.	12 p.m.
11/6	LA Tech *	<b>Convocation Center</b>	<b>6 p.m.</b>
11/8	UAB *	<b>Convocation Center</b>	<b>1 p.m.</b>
11/12	Southern Miss *	Hattiesburg, Miss.	7 p.m.
11/14	North Texas *	Denton, Texas	1 p.m.
11/20-22	C-USA Championships	San Antonio, Texas	TBA

All home matches are played at the Convocation Center and subject to change.  
 \* Denotes C-USA match • ! Bearkats Invitational (Hosted by Sam Houston State)  
 # Delta Zeta Classic (Hosted by Texas State) • \$ Texas Classic (Hosted by Texas)  
 % SMU Doubletree Invitational (Hosted by SMU)  
 ^ Conference USA Volleyball Championship (Hosted by UTSA)

### This Week

#### Match #15 • Middle Tennessee

Sept. 25 • Convocation Center • San Antonio, Texas

After a stomach virus spoiled the Roadrunners' Conference USA opener at Rice Tuesday, UTSA will now begin league action this Friday and Sunday when it welcomes Middle Tennessee and North Texas respectively.

UTSA heads into the weekend with an overall record of 9-5 and off a loss to SMU at its own Doubletree Invitational. The Roadrunners went 1-2 over the weekend with a lone victory over Clemson. The win marked the third win this season over a Power 5 school.

The win also brings head volleyball coach Laura Neugebauer-Groff within two wins of reaching the 500-career win mark. Neugebauer-Groff currently has a 498-246 record.

In the C-USA standings, the Roadrunners sit ninth and are one of two schools that have yet to play a conference match. UTSA is third in the circuit in hitting percentage (.242) and are holding opponents to the league's fourth-best attack percentage at a .163 clip.

Dajana Boskovic continues to lead the Roadrunners offense as the junior outside hitter is averaging a league fourth-best 4.10 kills per set. Boskovic also adds 95 digs and 23 blocks to the defense.

MT heads to the Lone Star State with a 3-12 overall record and a 1-0 mark in C-USA. The Blue Raiders picked up its third win against UAB on Sept. 16. In their last action, the Blue Raiders went 1-2 at the Hokie Invitational. MT sits in the middle to lower half of the league's team statistics. The squad is ninth in hitting percentage (.202) and allowing opponents to hit .255 (13th).

North Texas (9-7, 1-0) will head to the Alamo City after taking on UTEP on Friday. The Mean Green head west off a 3-1 loss to Baylor Tuesday. The last time the two programs met, UNT snapped the Roadrunners' 15-match win streak.

UTSA will also serve as the hosting school for the 2015 C-USA Volleyball Championships set for Nov. 20-22. The three-day event will take place at the Convocation Center on UTSA's campus.

### 2015 UTSA Volleyball Roster (Bold denotes probable starter)

No.	Name	Cl.	Pos.	Ht.	Hometown	Notes
1	Morgan Broussard	Sr.	S	5-9	Gering, Neb.	Played in 1 match at the SMU Doubletree Invite; 5.50 apts
5	Amanda Gonzales	Fr.	S	5-5	New Braunfels, Texas	Registered a season-best 49 assists against TCU
<b>6</b>	<b>Kasey Kiefer</b>	<b>Jr.</b>	<b>OH</b>	<b>6-0</b>	<b>Tempe, Ariz.</b>	<b>Four straight matches in double figure kills; 2.57 kps</b>
7	Marijeta Runjic	So.	OH	6-4	Trogir, Croatia	Second on team with 142 kills (2.84 kps), third in blocks (30)
8	Laura Cruz	Fr.	DS	5-2	Helotes, Texas	Averaging 1.72 assists per set
<b>9</b>	<b>Megan Slan</b>	<b>So.</b>	<b>MH</b>	<b>6-0</b>	<b>Leander, Texas</b>	<b>Matched season-best of 6 blocks against Clemson</b>
<b>11</b>	<b>Annie Kunes (L)</b>	<b>Sr.</b>	<b>DS</b>	<b>5-6</b>	<b>Fontana, Wis.</b>	<b>Averaging team-best 3.64 digs per set (193)</b>
12	Jordan Kotara	Sr.	MH/OH	6-1	Poth, Texas	Seen action in three matches and had 3 digs vs. Clemson
<b>15</b>	<b>Kylie Schott</b>	<b>Sr.</b>	<b>MH</b>	<b>6-1</b>	<b>Cypress, Texas</b>	<b>Has six matches of 5.0+ blocks; 54 total blocks (1.10 bps)</b>
<b>16</b>	<b>Shelby Williams</b>	<b>Fr.</b>	<b>DS</b>	<b>5-6</b>	<b>New Braunfels, Texas</b>	<b>Second on team with 173 digs (3.39 per set)</b>
<b>17</b>	<b>Dajana Boskovic</b>	<b>Jr.</b>	<b>OH</b>	<b>6-1</b>	<b>Trebinje, B&amp;H</b>	<b>Team leader in kills (160-4.10 kps) with 95 digs, 23 blocks</b>
18	Tessa Dahnert	Jr.	MH	6-0	Cedar Park, Texas	Has 24 blocks on the year, averaging 0.96 blocks per frame
<b>20</b>	<b>Jessica Waldrip</b>	<b>Jr.</b>	<b>S</b>	<b>5-10</b>	<b>New Braunfels, Texas</b>	<b>Averaging 8.84 assists per set (380 total)</b>
24	Daniella Villarreal	Jr.	DS	5-5	New Braunfels, Texas	Registered season-best 13 digs vs. Clemson
26	Antonela Jularic	Fr.	OH	6-1	Vrbovec, Croatia	Career day vs. Clemson with 14 kills, 12 digs and 3 blocks



## Quick Facts

### General Information

Name	The University of Texas at San Antonio
Location	San Antonio, Texas
Founded	1969
Enrollment	28,628 (24,342 undergraduate)
Nickname	Roadrunners
School Colors	Navy Blue, White and Orange
Home Arena	Convocation Center / 2,650
Affiliation	Division I
Conference	Conference USA
President	Dr. Ricardo Romo
Director of Athletics	Lynn Hickey
Athletic Department Phone	210-458-4161

### Coaching Staff

Head Coach	Laura Neugebauer-Groff (Texas, '86)
Record at UTSA	242-184 (13 seasons)
Career record	498-246 (21 seasons)
Office Phone	210-458-4196
Assistant Coaches	Pat Stangle (Third season) Danka Danicic (Second season)

### Team Information

2014 overall record	20-9
2014 Conference USA record	15-1 (t-1st)
Final ranking	N/A
Letter winners R/L	11/3
Starters R/L	5 +libero/1

Key returners	D. Boskovic, J. Waldrip, A. Kunes, K. Schott
Key Losses	Dempsey Thornton
Key newcomers	Antonela Jularic, Amanda Gonzales

### Volleyball History

First year	1983
All-time record	582-487
NCAA Postseason appearances	3 (2000, 2010, 2013)
C-USA regular season titles	2 (2013, 2014)
C-USA tournament titles	1 (2013)
Southland Conference championships	3 (1999 regular season; 2000 and 2010 tournament)

### Athletics Communications

Assistant AD/Communications	Kyle Stephens
Email	kyle.stephens@utsa.edu
Associate Director	Brian Hernandez
Email	brian.hernandez@utsa.edu
Assistant Director	Jordan Korphage
Email	jordan.korphage@utsa.edu
Assistant Director (volleyball contact)	Zena Rex
Email	zena.rex@utsa.edu
Cell	(966) 739-4878

## Media

**WE ARE UTSA** | When referencing The University of Texas at San Antonio athletics, please use the acronym UTSA and the nickname Roadrunners. Please refrain from using Texas-San Antonio, UT-San Antonio, UT-SA or any other variation.

**Media Coverage** | The UTSA Athletics Communication Office assists members of the media with their coverage of all Roadrunners sports by providing player and coach interviews, feature ideas, pregame notes and updated statistics.

**Interviews** | All interviews with coaches and student-athletes must be arranged at least 24 hours in advance through volleyball contact Zena Rex. Telephone interviews are available to the media on a "call-back" basis at a time that is convenient for the coach or student-athlete. Post-match interviews with coaches and student-athletes will be conducted on the court following a 10-minute cooling off period.

**Internet Radio Broadcasts** | All of UTSA's home matches are slated to be broadcast live (audio) on goUTSA.com this season. Video streaming (subscription required) will also be available for all home matches.

## Last Time Out

DALLAS — UTSA met with SMU in the final match-up of the SMU Doubletree Invitational and dropped a 3-1 (17-25, 17-25, 25-21, 23-25) decision to wrap up non-conference action for the Roadrunners.

UTSA (9-5) squared off with SMU for the 10th time in school history and was unable to take the match to five sets as the Roadrunners lost the fourth set 25-23.

After losing the first two sets by identical scores of 25-17, the Roadrunners came back to win the third set 25-21. SMU (10-2) jumped out to a commanding lead over the Roadrunners, but UTSA rattled off five straight points to tie the score at seven.

The Mustangs regained its lead out of the tie but the Roadrunners fought hard to even the score once again at 12. This time the team used a block to from Antonela Jularic and Tessa Dahnert to propel the team to a lead over SMU.

SMU came within one at the 19-18 mark but the Roadrunners held on for the win. UTSA hit a low .075 but held the home team to a .000 attack percentage.

In the fourth frame, UTSA used its momentum from the previous set and jumped out to an early advantage. SMU slowly cut into the lead and tied the score late in the set at 22 on a kill from Brittany Adams.

Kasey Kiefer recorded the following point with a kill, which forced SMU to take a timeout, but would not be enough as a serving error by UTSA evened the score at 23. The Roadrunners called for a timeout but were unable to keep things flowing as SMU registered the following two points for the win.

Marijeta Runjic led all scorers with 19 kills, while Kiefer added 11.

UTSA will continue its road trek as the team opens Conference USA action on Tuesday, Sept. 22, when the Roadrunners square off with Rice at 6 p.m.

**National Poll**

**AVCA Division I Coaches Preseason Poll  
(September 21, 2015)**

School	Total Points	'15 Record	'14 Final Rank
1. Penn State (64)	1600	11-0	1
2. Texas	1500	10-1	2
3. Southern California	1472	12-0	3
4. Nebraska	1381	9-1	4
5. Florida	1344	8-1	5
6. Washington	1262	10-0	7
7. Arizona State	1197	11-0	10
8. Stanford	1161	6-2	8
9. Illinois	1074	9-2	6
10. BYU	1061	10-1	9
11. Hawaii	914	10-1	12
12. Ohio State	895	11-1	13
13. UCLA	845	9-1	14
14. Arizona	725	10-2	16
15. Kansas	711	12-0	17
16. Wisconsin	668	8-2	11
17. Florida State	515	7-4	18
18. Oregon	463	6-3	19
19. Colorado State	445	7-3	15
20. Purdue	341	9-2	22
21. Minnesota	297	8-2	23
22. Michigan	227	10-1	20
23. Pacific	144	9-2	T24
24. Kentucky	123	7-5	T24
25. Long Beach State	78	10-3	NR

**Others receiving votes:** SMU 63; Wyoming 55; Western Kentucky 47; North Carolina 36; Michigan State 33; Iowa 24; Texas A&M 21; Arkansas 16; San Diego 12; Colorado 10; San Francisco 7; Creighton 4

**NCAA National Team Rankings - As of Sept. 21**

Leader	Statistic	UTSA
UTEP	Total digs	31
Denver	Total blocks	32
Ole Miss	Total kills	51
Drake	Total attacks	56
UAB	Total aces	67
Washington	Hitting pct.	75
UTEP	Digs per set	80
Penn State	Blocks per set	86
7 teams tied	Match W-L pct.	108
La.-Monroe	Aces per set	127
Kansas	Assists per set	146
Kansas	Kills per set	155

**Roadrunners Trends**

At Convocation Center	1-1
On the road	1-3
At a neutral site	7-1
Last 5 matches	2-3
Against ranked opponents	1-1
Longest win streak	4
Longest losing streak	2

**Scoreboard**

Up 1-0	7-1
Up 2-0	5-0
Up 2-1	4-0
Tied 1-1	4-3
Tied 2-2	2-1
Down 0-1	2-4
Down 0-2	0-2
Down 2-1	0-4

In August	4-0
In September	5-5
In October	0-0
In November	0-0

On Sundays	0-0
On Mondays	1-0
On Tuesdays	0-0
On Wednesdays	0-0
On Thursdays	0-2
On Fridays	5-2
On Saturdays	3-1

UTSA - More kills in match	8-0
Opp. - More kills in match	1-5
Tied	0-0

UTSA - More assists in match	8-0
Opp. - More assists in match	1-5
Tied	0-0

UTSA - More digs in match	7-3
Opp. - More digs in match	1-2
Tied	1-0

UTSA - More aces in match	7-0
Opp. - More aces in match	2-3
Tied	0-2

UTSA - More blocks in match	8-2
Opp. - More blocks in match	0-2
Tied	1-1

**Double-Doubles**

**Boskovic** 26 kills, 11 digs at SHSU  
25 kills, 18 digs vs. Texas State  
11 kills, 10 digs vs. Indiana  
21 kills, 16 digs vs. Oregon  
**Waldrip** 50 assists, 10 digs at SHSU  
**Jularic** 14 kills, 12 digs vs. Clemson  
**Gonzales** 49 assists, 10 digs vs. Clemson  
29 assists, 10 digs vs. SMU

**Nationally Ranked**

As of Sept. 21

Name	Rank	Value
Boskovic (attacks per set)	19	11.85
Boskovic (kills per set)	38	4.10
Boskovic (total attacks)	122	462
Boskovic (total kills)	123	160
Schott (hitting pct.)	51	.392
Schott (total blocks)	57	54
Schott (blocks per set)	132	1.10
Waldrip (total assists)	148	380
Kunes (total digs)	108	193

**NCAA RPI Rankings**

**Court Notes**

**Roadrunners picked second in CUSA Poll**

UTSA was selected to finish second in the 2015 Conference USA Volleyball Preseason Poll, voted upon the league's coaches, it was announced July 30.

Coming off their second consecutive regular season title and fifth consecutive 20-plus win

season, UTSA was selected behind WKU, who shared the crown with UTSA last fall.

Dajana Boskovic and Jessica Waldrip also make their second appearance on the preseason all-conference team. Both were first team all-conference honorees in 2014 while Waldrip was tabbed the league's setter of the year.

**Hot streaks**

Combined with the 2013 and 2014 season, UTSA won 22 consecutive regular season Conference USA matches, for the all-time league record. Tulsa held the previous record of 20, set in 2010.



## Conference USA Preseason Team and Poll

Name	School	Pos.	Yr.
Katarina Stepanovic	Florida Atlantic	MB	Sr.
Ally Kiekoover	Marshall	MB	Jr.
Chelsea Ross	Middle Tennessee	OH	Sr.
Carnae Dillard	North Texas	OH	Sr.
Chelsey Harris	Rice	RS	Jr.
Leah Mikesky	Rice	OH	RJr.
Mary Pursell	Southern Miss	L/DS	Sr.
Dajana Boskovic	UTSA	OH	Jr.
Jessica Waldrip	UTSA	S	Jr.
Alyssa Cavanaugh	WKU	OH	So.
Jessica Lucas	WKU	S	So.
Noelle Langenkamp	WKU	MH	Sr.

**C-USA Volleyball Preseason Player of the Year:** Carnae Dillard, UNT

### 2015 Conference USA Volleyball Preseason Poll

1. WKU
2. **UTSA**
3. Rice
4. North Texas
5. Florida Atlantic
6. Southern Miss
7. Marshall
8. Middle Tennessee
9. FIU
10. Charlotte
11. UTEP
12. UAB
13. Louisiana Tech



### Stat Leaders

*Overall conference individual leaders - As of Sept. 23*

Hitting Percentage	No.	Avg./S
2. Kylie Schott	(87-14-186)	.392
<b>Kills</b>		
4. Dajana Boskovic	160	4.10
<b>Assists</b>		
8. Jessica Waldrip	380	8.84
<b>Blocks</b>		
5. Kylie Schott	54.0 (9-45)	1.10
<b>Points</b>		
4. Dajana Boskovic	177.5 (160K-5SA-23B)	4.55

*Conference only leaders - 2014 FINAL*

Hitting Percentage	No.	Avg./S
2. Kylie Schott	(107-22-211)	.403
<b>Kills</b>		
2. Dajana Boskovic	273	4.71
5. Dempsey Thornton	203	4.06
<b>Assists</b>		
1. Jessica Waldrip	685	12.02
<b>Digs</b>		
4. Annie Kunes	246	4.24
<b>Points</b>		
2. Dajana Boskovic	309.0 (273K-9SA-48B)	5.33
5. Dempsey Thornton	222.0 (203K-11SA-16B)	4.44

### Standings - As of Sept. 23

Team	Conference			Overall		
	W	L	Pct.	W	L	Pct.
FIU	2	0	1.000	8	4	.667
WKU	1	0	1.000	13	2	.867
Southern Miss	1	0	1.000	13	4	.765
North Texas	1	0	1.000	9	7	.562
Charlotte	1	0	1.000	4	7	.364
Middle Tennessee	1	0	1.000	3	12	.200
Rice	0	0	.000	10	3	.769
Marshall	0	1	.000	9	5	.643
UTSA	0	0	.000	9	5	.643
Florida Atlantic	0	1	.000	8	5	.615
Louisiana Tech	0	1	.000	6	8	.429
UAB	0	3	.000	7	10	.412
UTEP	0	1	.000	6	9	.400

### Team Comparison

**As of Sept. 23**

Leader	Statistic	UTSA
WKU - .265	Hitting percentage	3rd - .242
WKU - .145	Opponent hitting percentage	4th - .163
Rice - 13.47	Assists	8th - 11.77
Rice - 14.24	Kills	7th - 12.60
FIU - 2.41	Blocks	6th - 2.30
Charlotte - 1.87	Service Aces	4th - 1.36
UTEP - 18.61	Digs	5th - 15.58

**C-USA Players of the Week**

Week 1 - Aug. 31

Offensive - Noelle Langenkamp, WKU

**Defensive - Kylie Schott, UTSA**

Setter - Madison McDaniel, Rice

Freshman - Gabriela Martin, FAU

Week 2 - Sept. 8

Off. - Stephany Purdue, USM; Carnae Dillard, UNT

Defensive - Mary Pursell, Southern Miss

Setter - Madison McDaniel, Rice

Freshman - McKay Kyle, Rice

Week 3 - Sept. 14

Offensive - Leah Mikesky, Rice

Defensive - Allie Kellerman, Marshall

Setter - Madison McDaniel, Rice

Freshman - Gabriela Martin, FAU

Week 4 - Sept. 21

Offensive - Carnae Dillard, UNT

Defensive - Kimberly Vaio, Rice

Setter - Jessica Lucas, WKU

Freshman - Zahria Ri'chard, UAB

Week 5 - Sept. 28

Offensive -

Defensive -

Setter -

Freshman -

Week 6 - Oct. 5

Offensive -

Defensive -

Setter -

Freshman -

Week 7 - Oct. 12

Offensive -

Defensive -

Setter -

Freshman -

Week 8 - Oct. 19

Offensive -

Defensive -

Setter -

Freshman -

Week 9 - Oct. 26

Offensive -

Defensive -

Setter -

Freshman -

Week 10 - Nov. 2

Offensive -

Defensive -

Setter -

Freshman -

Week 11 - Nov. 9

Offensive -

Defensive -

Setter -

Freshman -

**Scouting the Opponent****Rice • September 22 • 6 p.m.****Match rescheduled for later date**

- All-time record against Rice: 4-16

- Last meeting: Nov. 22, 2014 in Hattiesburg, Miss.; Rice 3, UTSA 0

- In the last meeting between UTSA and Rice, the Owls knocked the Roadrunners out of the 2014 Conference USA Volleyball Tournament. It was the third meeting of 2014 and second in a week.

- The Owls leads the league in assists (13.47 per set) and kills (14.24 per set), are second in hitting percentage (.258), third in digs (16.14 per set) and tie for third in blocks (2.33 per frame).

- RS junior Leah Mikesky leads the Owls offense with 3.51 kills per set and adds 2.76 digs and 0.35 blocks per set to the defense.

- Rice is second in the nation in total assists (596) and total kills (632), ranks 25th in assists per set (13.24) and 30th in kills per set (14.04).

- Madison McDaniel has been named the circuit's setter of the week the last three weeks and is averaging a league-leading 10.82 assists per set, which also ranks 42nd in the NCAA.

**Middle Tennessee • September 25 • 6 p.m.**

- All-time record against Middle Tennessee: 2-3

- Last meeting: Oct. 3, 2014 in Murfreesboro, Tenn.; UTSA 3, Middle Tennessee 0

- In the last meeting, UTSA swept the Blue Raiders in straight sets in Murfreesboro. Dajana Boskovic and Dempsey Thornton each tallied double figure kills with 13 and 10 respectively. The team hit a .391 clip and held MT to a .132 attack percentage.

- MT heads to the Lone Star State with a 3-12 overall record and off a 1-2 weekend at the Hokie Invitational

- The Blue Raiders sit in the middle to lower half of the league's team statistics. MT is ninth in hitting percentage (.202) and allowing opponents to hit .255 (13th in C-USA).

- Chelsea Ross leads the Blue Raiders offense averaging 4.76 kills per set, to go with a team second-best 117 digs.

**North Texas • September 27 • 1 p.m.**

- All-time record against North Texas: 15-7

- Last meeting: Nov. 13, 2014 in Denton, Texas; North Texas 3, UTSA 0

- The last time the two programs met, the Mean Green snapped the Roadrunners' 15-match win streak in Denton

- North Texas will open Conference USA action on Friday against UTEP before traveling to the Alamo City. UNT has compiled a 9-7 overall record and are coming off a 3-1 loss to Baylor Tuesday

- Carnae Dillard, reigning C-USA Offensive Player of the Week, leads the Mean Green with 320 kills (5.16 per set) and 167 digs (2.69 per set) and adds 33 blocks at the net.

- North Texas is slightly outperforming the competition .233-.224

- Amanda Chamberlain is hitting a team-best .342 and leads the team with 49 blocks (0.82 bps) and is averaging 1.83 kills per set





## Court Notes

### We've got the keys

UTSA will return five of its starting six, plus libero, for the 2015 season. Highlighting the returning squad is Conference USA Setter of the Year and All-American Jessica Waldrip and all-conference selections Dajana Boskovic, Annie Kunes and Kylie Schott.

Reigning C-USA Coach of the Year Laura Groff will have one slot to fill with the graduation of outside Dempsey Thornton.

### The more the merrier

Head coach Laura Neugebauer-Groff adds four to the 2015 roster - all true freshman. The Roadrunners will welcome Antonela Jularic (OH), Amanda Gonzales (S), Laura Cruz (DS) and Shelby Williams (DS).

Jularic hails from Croatia where she most recently played in the Youth World Championships in Estonia. The 6-1 outside hitter was also a member of the Croatian Youth National and Senior National Teams.

Gonzales, Cruz and Williams all come to UTSA from the San Antonio/New Braunfels area.

### Make it 15

The Roadrunners have now opened each of their last 15 campaigns on the road. The last time UTSA opened at home was during the 2000 season when it hosted the UTSA/Hampton Inn Invitational.

Since then, the Roadrunners have headed to Wyoming, Illinois, North Carolina, Kansas, Idaho, Tennessee, Louisiana and have even stayed within the friendly confines of the Lone Star State to kick off their campaigns.

### Season openers

In the program's 32 years of existence, the Roadrunners have gone 13-19 in season openers. In the last five seasons, UTSA is 3-2, and in 2014 won the season opener against Tulane at the Texas A&M Invitational in College Station.

### Tough competition

The AVCA announced its preseason poll for the 2015 campaign and UTSA will face two opponents ranked in the top-25. Texas checked in at No. 3 and received one first-place vote while Oregon was picked No. 13. The Roadrunners will host the Ducks on Sept. 7 for the home opener.

### One at a time

During the 2014 season, UTSA won 15 consecutive matches during the regular season, which was the second longest win streak in program history. The program record of 16 was set in 1999 when the Roadrunners finished 22-7. The streak ended for the Roadrunners on November 13 when they traveled to North Texas and went down in straight sets.

1999 - 16 consecutive wins (22-7)  
2014 - 15 consecutive wins (20-9)  
2000 - 15 consecutive wins (24-9)  
2010, 2011 - 12 consecutive wins

### Milestone 500

At the conclusion of the 2014 season, head volleyball coach Laura Neugebauer-Groff wrapped up her 21st season coaching with a 489-241 career record and is 11 wins away from reaching her 500th career win.

In 2010, Neugebauer-Groff reached her 400th career win against McNeese State in a 3-2 decision.

### Among the best

Head coach Laura Neugebauer-Groff enters her 14th season at the helm of the Roadrunners volleyball program and 22nd overall in 2015. Among all coaches at the Division I level, Neugebauer-Groff is the 26th winningest coach (by wins) with 489 and is the 45th winningest coach (by percentage) with a 67 percent winning percentage.

### Program 600

Since its inception in 1983, UTSA has compiled a 582-487 overall record. The Roadrunners are 18 wins away from reaching the program's 600th win. Let the countdown begin!

### On the watch

Senior Kylie Schott already ranks in the all-time record books in block assists and total blocks but is nine block solos away from cracking into the top-10. Schott has totaled 41 block solos through three seasons.

### Reaching new heights

The Roadrunners set a program record on Aug. 28 when they swept Prairie View A&M at the Bearkats Invitational. UTSA hit a whopping .573 (49-6-75) which surpassed the previous mark of .536 set on Sept. 19, 2013 against Mississippi Valley State. Seven Roadrunners hit above .500.

### Trio standouts at Bearkats Invite

UTSA captured its first tournament title since the 2013 season (Hilton Mavericks Classic) at the 27th Bearkats Invitational hosted by Sam Houston State. Senior Kylie Schott was tabbed the Most Valuable Player while Jessica Waldrip and Dajana Boskovic were named to the all-tournament team.

### Schott tabbed DPOW

Kylie Schott hit .532 (28-3-47) over the weekend at the 27th Bearkats Invitational and was recognized as the tournament most valuable player. Schott in turn was recognized as the league's first defensive player of the week.

She tallied 11 kills with six blocks against Sam Houston State and helped lead the team to a 3-2 win over the Bearkats, their first since 2013 snapping a 16-home match win streak.

### Power 5, power down

UTSA squared off with Big Ten Indiana for the first time in school annals at the Delta Zeta Classic and notched a 3-1 victory over the Hoosiers. The win marked a program first for a win over a Big Ten school.

### Duo recognized on all-tournament team

After leading the Roadrunners to a 2-1 weekend, Dajana Boskovic and Marijeta Runjic led UTSA to a second-place finish at the DZ Classic and earned a spot on the all-tournament team. Boskovic notched double figure kills in all three matches, including a season-best of 25 against Texas State.

### Going down in history

Three days after posting a first-ever win over a Big Ten opponent, UTSA upset No. 12 Oregon, 3-1, at the Convocation Center in front of the program's sixth-best crowd (1,051).

The Roadrunners dropped the first set 25-19, but bounced back winning the last three sets. Dajana Boskovic led the team with 21 kills and 16 digs for her fourth double-double of the season.

### One at a time

Head volleyball coach Laura Neugebauer-Groff started off the 2015 campaign with 489 career wins and then picked up four more at the 27th Bearkats Invitational en route to a tournament title. With an upset over No. 12 Oregon and various other wins, Neugebauer-Groff is now three wins away from reaching the 500 career win plateau.

## Convocation Center



- Built in 1975, the Convocation Center features a permanent maple hardwood court that measures 17,900 square feet and seating that accommodates 4,080 spectators.
- The “Convo” hosted the 1993 United States Olympic Festival Volleyball Tournament, 1998 NORCECA World Volleyball Championships, 2002 WBCA All-Star Game and 2004 Nike Hoops Summit.
- It has been the home of UTSA’s volleyball team since 1989.
- Nine of the top 10 crowds in program history have come during the 12-year Laura Neugebauer-Groff era.

### Top-10 Crowds

1.	1,612	vs. Texas State	Nov. 10, 2011	6.	1,051	vs. #12 Oregon	Sept. 7, 2015
2.	1,537	vs. McNeese State	Oct. 14, 2009	7.	987	vs. Baylor	Sept. 20, 2014
3.	1,330	vs. Texas State	Nov. 12, 2009	8.	923	vs. Rice	Aug. 28, 2013
4.	1,150	vs. Florida	Nov. 13, 1999	9.	918	vs. Rice	Oct. 20, 2014
5.	1,105	vs. Tulsa	Nov. 17, 2013	10.	863	vs. Texas State	Nov. 22, 2003



UTSA will be the host site for the 2015 Conference USA Volleyball Championships set for November 20-22.

The eight-team, single elimination tournament will be held at the Convocation Center Friday through Sunday. Western Kentucky won the tournament crown in 2014 after earning a share of the regular season title with the Roadrunners.

The 2015 edition of the event will mark the first time UTSA will play host to a Conference USA championship in any sport.

The last time UTSA hosted a conference tournament was back in 2012 in the Roadrunners first and only season in the Western Athletic Conference.

#### On the way to the top

After the second-best start in program history, the Roadrunners have added three more accomplishments to the 2015 season. UTSA has now earned wins against three Power 5 programs.

The first came against Indiana at the Delta Zeta Classic and was followed by an upset over then-No. 12 Oregon at the Convocation Center. The final came this past weekend at the SMU Doubletree Invitational when the Roadrunners defeated Clemson (ACC) in five sets.

#### It's flu season

Tuesday's Conference USA opener against Rice (Sept. 22) was rescheduled due to Rice's team coming down with a stomach virus. A date has yet to be determined for a make up date.



## INDIVIDUAL RECORDS

### KILLS

Match: 40 - Tamara Luckemeyer vs. UT Arlington (Oct. 27, 1998)  
 3 sets: 26 - Two players (last on Nov. 9, 2004)  
 4 sets: 35 - Tamara Luckemeyer vs. Texas State (Oct. 23, 1998)  
 5 sets: 40 - Tamara Luckemeyer vs. UT Arlington (Oct. 27, 1998)  
 Season: 653 - McKenzie Adams (2013)  
 Career: 2,034 - Tamara Luckemeyer (1996-2000)

### ATTACK ATTEMPTS

Match: 81 - McKenzie Adams (Oct. 18, 2013)  
 3 sets: 59 - Tamara Luckemeyer vs. McNeese State (Oct. 22, 1999)  
 4 sets: 74 - Stacy Schmidt at Stephen F. Austin (Sept. 15, 2000)  
 5 sets: 81 - McKenzie Adams (Oct. 18, 2013)  
 Season: 1,575 - McKenzie Adams (2013)  
 Career: 5,159 - Meagan Daniel (2003-06)

### ATTACK PERCENTAGE

Match (20 att.): .762 - McKenzie Adams at McNeese State (Oct. 8, 2011)  
 Season (100 att.): .385 - Kylie Schott (2014)  
 Career (1500 att.): .383 - Leslie Dodson (1989-92)

### ASSISTS

Match: 88 - Natasha Biggers vs. UT Arlington (Oct. 27, 1998)  
 3 sets: 64 - Natasha Biggers vs. McNeese State (Oct. 22, 1999)  
 4 sets: 78 - Natasha Biggers at Lamar (Sept. 29, 2000)  
 5 sets: 88 - Natasha Biggers vs. UT Arlington (Oct. 27, 1998)  
 Season: 1,597 - Natasha Biggers (2000)  
 Career: 5,440 - Natasha Biggers (1997-2000)

### SERVICE ACES

Match: 8 - Tamin Uthoff vs. Texas-Pan American (Sept. 29, 1989)  
 3 sets: 6 - Two players (last on Sept. 10, 1995)  
 4 sets: 8 - Tamin Uthoff vs. Texas-Pan American (Sept. 29, 1989)  
 5 sets: 7 - Cristela Perez vs. McNeese State (Nov. 21, 1996)  
 Season: 84 - Tamin Uthoff (1990)  
 Career: 227 - Tamin Uthoff (1987-90)

### DIGS

Match: 42 - Erin McMillan vs. Texas State (Nov. 9, 2006)  
 3 sets: 29 - Audrey Hiser vs. UT Arlington (Oct. 13, 2007)  
 4 sets: 34 - Three players (last on Nov. 16, 2007)  
 5 sets: 42 - Erin McMillan vs. Texas State (Nov. 9, 2006)  
 Season: 734 - Erin McMillan (2006)  
 Career: 2,280 - Kelsey Jewasko (2008-11)

### BLOCK SOLOS

Match: 6 - Victoria Prior at Prairie View A&M (Sept. 14, 2007)  
 Season: 63 - Carla Dewey (1995)  
 Career: 198 - Carla Dewey (1993-96)

### BLOCK ASSISTS

Match: 11 - Two players (last on Oct. 9, 1999)  
 Season: 132 - Carla Dewey (1995)  
 Career: 402 - Carla Dewey (1993-96)

### TOTAL BLOCKS

Match: 13 - Nicole Camp at Stephen F. Austin (Oct. 9, 1999)  
 3 sets: 9 - Three players (last on Oct. 1, 2011)  
 4 sets: 13 - Nicole Camp at Stephen F. Austin (Oct. 9, 1999)  
 5 sets: 12 - Two players (last on Oct. 11, 1996)  
 Season: 195 - Carla Dewey (1995)  
 Career: 600 - Carla Dewey (1993-96)

## TEAM RECORDS

### KILLS

Match: 103 vs. UT Arlington (Oct. 27, 1998)  
 3 sets: 72 vs. McNeese State (Oct. 9, 1998)  
 4 sets: 96 vs. Texas State (Nov. 10, 1998)  
 5 sets: 103 vs. UT Arlington (Oct. 27, 1998)  
 Season: 2,005 (2000)

### ATTACK ATTEMPTS

Match: 268 vs. UT Arlington (Oct. 27, 1998)  
 3 sets: 187 vs. McNeese State (Oct. 22, 1999)  
 4 sets: 256 vs. Texas State (Nov. 10, 1998)  
 5 sets: 268 vs. UT Arlington (Oct. 27, 1998)  
 Season: 5,624 (2006)

### ATTACK PERCENTAGE

Match: .573 vs. Prairie View A&M (Aug. 28, 2015)  
 Season: .267 (1999)

### ASSISTS

Match: 93 vs. McNeese State (Oct. 28, 2005)  
 3 sets: 65 vs. UT Arlington (Nov. 9, 2004)  
 4 sets: 86 at Stephen F. Austin (Sept. 16, 2000)  
 5 sets: 93 vs. McNeese State (Oct. 28, 2005)  
 Season: 1,819 (2006)

### SERVICE ACES

Match: 19 vs. Texas Southern (Sept. 30, 1995)  
 3 sets: 12 at Louisiana-Monroe (Nov. 9, 2001)  
 4 sets: 19 vs. Texas Southern (Sept. 30, 1995)  
 5 sets: 15 vs. McNeese State (Nov. 21, 1996)  
 Season: 285 (1990)

### DIGS

Match: 136 at Southeastern Louisiana (Nov. 2, 2001)  
 3 sets: 89 vs. McNeese State (Oct. 22, 1999)  
 4 sets: 131 vs. Texas State (Nov. 10, 1998)  
 5 sets: 136 at Southeastern Louisiana (Nov. 2, 2001)  
 Season: 2,638 (1990)

### BLOCK SOLOS

Match: 15 at Northwestern State (Oct. 11, 2002)  
 Season: 138 (1995)

### BLOCK ASSISTS

Match: 34 vs. Sam Houston State (Sept. 23, 2006)  
 Season: 482 (2013)

### TOTAL BLOCKS

Match: 27 at Texas-Pan American (Oct. 30, 1991)  
 3 sets: 16.5 vs. Texas A&M-Corpus Christi (Sept. 23, 2004)  
 4 sets: 27 at Texas-Pan American (Oct. 30, 1991)  
 5 sets: 20 vs. UT Arlington (Oct. 27, 1998)  
 Season: 355 (1995)



## CAREER RECORDS

## KILLS

1.	Tamara Luckemeyer, 1996-2000	2,034
2.	Meagan Daniel, 2003-06	1,808
3.	Stacy Schmidt, 1998-2001	1,779
4.	Kendra Rowland, 2007-10	1,625
5.	Leslie Dodson, 1989-92	1,612
6.	Connie Picard, 2003-06	1,396
7.	Heather Turner, 1994-97	1,391
8.	McKenzie Adams, 2011-13	1,382
9.	Brittany Hildebrand, 2003-06	1,342
10.	Whitney Walls, 2009-12	1,236

## KILLS PER SET

1.	Tamara Luckemeyer, 1996-00	4.60
2.	McKenzie Adams, 2011-13	4.44
3.	Stacy Schmidt, 1998-2001	4.09
4.	Meagan Daniel, 2003-06	3.99
5.	Charlsie Heifrin, 2000-02	3.38
6.	Kendra Rowland, 2007-10	3.37
7.	Victoria Prior, 2005-07	3.26
8.	Leslie Dodson, 1989-92	3.20
9.	Connie Picard, 2003-06	3.05
10.	Brittany Hildebrand, 2003-06	3.02

## ATTACK ATTEMPTS

1.	Meagan Daniel, 2003-06	5,159
2.	Kendra Rowland, 2007-10	4,963
3.	Stacy Schmidt, 1998-2001	4,914
4.	Tamara Luckemeyer, 1996-2000	4,803
5.	Heather Turner, 1994-97	4,167
6.	Brittany Hildebrand, 2003-06	3,750
7.	Dempsey Thornton, 2011-14	3,676
8.	Cristela Perez, 1993-96	3,468
9.	McKenzie Adams, 2011-13	3,391
10.	Connie Picard, 2003-06	3,240

## ATTACK PERCENTAGE (MIN. 1,500 ATTEMPTS)

1.	Leslie Dodson, 1989-92	.383
2.	Brittney Malloy, 2009-12	.295
2.	Charlsie Heifrin, 2000-02	.290
3.	Connie Picard, 2003-06	.285
4.	Whitney Walls, 2009-12	.276
	Victoria Prior, 2005-07	.276
6.	Carla Dewey, 1993-96	.272
7.	McKenzie Adams, 2011-13	.262
8.	Stacy Schmidt, 1998-2001	.259
9.	Katy Risinger, 1997-2000	.237
10.	Jennifer Sharp, 1991-94	.232
10.	Natasha Biggers, 1997-2000	.232

## ASSISTS

1.	Natasha Biggers, 1997-2000	5,440
2.	DeeDee Strickland, 2003-06	5,407
3.	Deanna Bower, 1991-94	3,761
4.	Tamin Uthoff, 1987-90	3,269
5.	Tobi Irish, 1994-97	2,760
6.	Kelsey Schwirtlich, 2008-11	2,523
7.	<b>Jessica Waldrip, 2013-Present</b>	<b>2,319</b>
8.	Amber Brooks, 2008-09	1,915
9.	Brandy Huskey, 2012-13	1,746
10.	Rebecca Hrapmann, 2005-08	1,350

## SERVICE ACES

1.	Tamin Uthoff, 1987-90	227
2.	Natasha Biggers, 1997-2000	159
3.	Meagan Daniel, 2003-06	144
4.	Cristela Perez, 1993-96	122
	Amber Soletti, 1994-96	122
6.	Leslie Dodson, 1989-92	118
	Jennifer Sharp, 1991-94	118
8.	Katy Risinger, 1997-2000	115
9.	Deanna Bower, 1991-94	111
10.	Heather Turner, 1994-97	107

## DIGS

1.	Kelsey Jewasko, 2008-11	2,280
2.	Erin McMillan, 2003-06	2,279
3.	Shalynn McCoy, 1986-89	2,009
4.	Stacy Schmidt, 1998-2001	1,839
5.	<b>Annie Kunes, 2012-Present</b>	<b>1,711</b>
6.	Tamara Luckemeyer, 1996-2000	1,549
7.	Meagan Daniel, 2003-06	1,433
8.	Kendra Rowland, 2007-10	1,395
9.	Audrey Hiser, 2005-08	1,359
10.	Heather Turner, 1994-97	1,356

## BLOCK SOLOS

1.	Carla Dewey, 1993-96	198
2.	Connie Picard, 2003-06	94
3.	Jennifer Sharp, 1991-94	84
4.	Charlsie Heifrin, 2000-02	83
5.	Kelly Paegle, 1990-92	79
6.	Teri Fry, 2000-03	62
7.	Briana Mason, 2007-10	61
8.	Victoria Prior, 2005-07	58
9.	<b>Kylie Schott, 2012-Present</b>	<b>50</b>
	McKenzie Adams, 2011-13	50
	Brittney Malloy, 2009-12	50

## BLOCK ASSISTS

1.	Carla Dewey, 1993-96	402
2.	Connie Picard, 2003-06	363
3.	Brittney Malloy, 2009-12	349
4.	<b>Kylie Schott, 2012-Present</b>	<b>329</b>
5.	Whitney Walls, 2009-11	279
6.	Charlsie Heifrin, 2000-02	236
7.	Briana Mason, 2007-10	225
8.	Jennifer Sharp, 1991-94	221
9.	Marcia Lyssy, 1996-97	216
10.	McKenzie Adams, 2011-13	210

## TOTAL BLOCKS

1.	Carla Dewey, 1993-96	600
2.	Connie Picard, 2003-06	457
3.	Brittney Malloy, 2009-11	399
4.	<b>Kylie Schott, 2012-Present</b>	<b>379</b>
5.	Kelly Paegle, 1989-92	344
6.	Charlsie Heifrin, 2000-02	319
7.	Jennifer Sharp, 1991-94	305
8.	Whitney Walls, 2009-12	294
9.	Briana Mason, 2007-10	286
10.	McKenzie Adams, 2011-13	260

**#1 Morgan Broussard • 5-9 • S • Sr. • Gering, Neb.**2015 Season Notes

Career hitting pct. - 1.000 (6x) last at Middle Tennessee (10/3/14)

2015 Season Highs

Kills 2 vs. Texas Southern (9/5/15)  
 Total Attacks 4 vs. Texas Southern (9/5/15)  
 Assists 20 vs. Texas Southern (9/5/15)  
 Service Aces 1 at Texas State (9/3/15)  
 Digs 4 vs. Santa Clara (9/10/15)  
 Total Blocks 2 vs. Prairie View A&M (8/28/15)  
 Hitting Pct. .000 (2-2-4) vs. Texas Southern (9/5/15)

Career Highs

Kills **2 (3x) last vs. Texas Southern (9/5/15)**  
 Total Attacks 5 vs. McCook C.C. (9/24/13)  
 Assists 41 vs. Trinidad State Junior College (10/13/12)  
 Service Aces 4 vs. McCook C.C. (10/16/12)  
 Digs 14 vs. Marquette (9/13/14)  
 Total Blocks 5 vs. Green Bay (9/12/14)

**#6 Kasey Kiefer • 6-0 • OH • Jr. • Tempe, Ariz.**2015 Season Notes

Career hitting pct. - 1.000 (1-0-1) vs. Tulane (11/24/13)

2015 Season Highs

Kills 18 (2x) last vs. Clemson (9/18/15)  
 Total Attacks 48 vs. Clemson (9/18/15)  
 Assists 1 (2x) last at SMU (9/19/15)  
 Service Aces  
 Digs 8 vs. TCU (9/18/15)  
 Total Blocks 3 (3x) last vs. TCU (9/18/15)  
 Hitting Pct. .600 (6-0-10) vs. Prairie View A&M (8/28/15)

Career Highs

Kills **18 (2x) last vs. Clemson (9/18/15)**  
 Total Attacks **38 (2x) last vs. TCU (9/18/15)**  
 Assists 2 vs. San Diego State (8/31/13)  
 Service Aces 2 (2x) last vs. Wichita State (9/6/14)  
 Digs 11 vs. San Diego State (8/31/13)  
 Total Blocks **3 (4x) last vs. TCU (9/18/15)**

**#8 Laura Cruz • 5-2 • DS • Fr. • Helotes, Texas**2015 Season Notes2015 Season Highs

Kills  
 Total Attacks  
 Assists 1 (2x) last at #4 Texas (9/11/15)  
 Service Aces 2 vs. Indiana (9/4/15)  
 Digs 17 at Texas State (9/3/15)  
 Total Blocks  
 Hitting Pct.

Career Highs

Kills  
 Total Attacks  
 Assists  
 Service Aces  
 Digs  
 Total Blocks

**#5 Amanda Gonzales • 5-5 • S • Fr. • New Braunfels, Texas**2015 Season Notes

- Debuted college career against TCU (Sept. 18)

2015 Season Highs

Kills 2 vs. Clemson (9/18/15)  
 Total Attacks 2 vs. Clemson (9/18/15)  
 Assists 49 vs. Clemson (9/18/15)  
 Service Aces 2 vs. TCU (9/18/15)  
 Digs 10 (2x) last at SMU (9/19/15)  
 Total Blocks 2 at SMU (9/19/15)  
 Hitting Pct. 1.000 (1-0-1)(2x) last at SMU (9/19/15)

Career Highs

Kills  
 Total Attacks  
 Assists  
 Service Aces  
 Digs  
 Total Blocks

**#7 Marijeta Runjic • 6-4 • OH • So. • Trogir, Croatia**2015 Season Notes

Career hitting pct. - .900 (9-0-10) vs. Prairie View A&amp;M (8/28/15)

2015 Season Highs

Kills 19 at SMU (9/19/15)  
 Total Attacks 35 vs. Santa Clara (9/10/15)  
 Assists 1 (3x) last at SMU (9/19/15)  
 Service Aces 5 vs. Iona (9/11/15)  
 Digs 7 vs. Clemson (9/18/15)  
 Total Blocks 6 (2x) last vs. Clemson (9/18/15)  
 Hitting Pct. .900 (9-0-10) vs. Prairie View A&M (8/28/15)

Career Highs

Kills 24 at Texas A&M (8/30/14)  
 Total Attacks 60 at Texas A&M (8/30/14)  
 Assists 2 vs. James Madison (9/13/14)  
 Service Aces **5 vs. Iona (9/11/15)**  
 Digs 16 at Texas A&M (8/30/14)  
 Total Blocks **6 (2x) last vs. Clemson (9/18/15)**

**#9 Megan Slan • 6-0 • MH • So. • Leander, Texas**2015 Season Notes

Career hitting pct. - .900 (9-0-10) vs. Montana State (8/28/15)

2015 Season Highs

Kills 10 vs. Texas Southern (9/5/15)  
 Total Attacks 12 vs. Texas Southern (9/5/15)  
 Assists 1 (3x) last vs. #12 Oregon (9/7/15)  
 Service Aces 1 vs. Prairie View A&M (8/28/15)  
 Digs 2 at #4 Texas (9/11/15)  
 Total Blocks 6 (2x) last vs. Clemson (9/18/15)  
 Hitting Pct. .900 (9-0-10) vs. Montana State (8/28/15)

Career Highs

Kills **10 vs. Texas Southern (9/5/15)**  
 Total Attacks **12 (2x) last vs. Texas Southern (9/5/15)**  
 Assists **1 (5x) last vs. #12 Oregon (9/7/15)**  
 Service Aces **1 vs. Prairie View A&M (8/28/15)**  
 Digs 2 (2x) last at #4 Texas (9/11/15)  
 Total Blocks 9 vs. Green Bay (9/12/14)

**#11 Annie Kunes • 5-6 • DS • Sr. • Fontana, Wis.**

**2015 Season Notes**

Career hitting pct. - 1.000 (3x) last vs. Texas A&M (12/5/13)

**2015 Season Highs**

Kills 1 vs. Iona (9/11/15)  
 Total Attacks 2 vs. Iona (9/11/15)  
 Assists 6 at SMU (9/19/15)  
 Service Aces 3 vs. Iona (9/11/15)  
 Digs 27 at Sam Houston State (8/29/15)  
 Total Blocks  
 Hitting Pct. .500 (1-0-2) vs. Iona (9/11/15)

**Career Highs**

Kills **1 (5x) last vs. Iona (9/11/15)**  
 Total Attacks 3 (4x) last vs. Florida Atlantic (9/26/14)  
 Assists 8 (2x) last vs. New Mexico State (11/10/12)  
 Service Aces 4 vs. Seattle (9/27/12)  
 Digs 39 at Texas A&M (8/30/14)  
 Total Blocks

**#12 Jordan Kotara • 6-1 • MH/OH • Sr. • Poth, Texas**

**2015 Season Notes**

Career hitting pct. - .600 (7-1-10) at LA Tech (11/3/12)

**2015 Season Highs**

Kills 1 vs. Iona (9/11/15)  
 Total Attacks 5 vs. Texas Southern (9/5/15)  
 Assists  
 Service Aces 1 (2x) last vs. Clemson (9/18/15)  
 Digs 3 vs. Clemson (9/18/15)  
 Total Blocks  
 Hitting Pct. .333 (1-0-3) vs. Iona (9/11/15)

**Career Highs**

Kills 14 vs. Tulane (8/29/14)  
 Total Attacks 45 vs. Tulane (8/29/14)  
 Assists 2 vs. Wichita State (9/6/14)  
 Service Aces 2 (3x) last at Texas A&M (8/30/14)  
 Digs 22 vs. Wichita State (9/6/14)  
 Total Blocks 5 at Texas State (9/5/14)

**#15 Kylie Schott • 6-1 • MH • Sr. • Cypress, Texas**

**2015 Season Notes**

Career hitting pct. - .800 (4-0-5) vs. Southern Miss (11/22/13)

**2015 Season Highs**

Kills 11 (2x) last vs. Santa Clara (9/10/15)  
 Total Attacks 20 (3x) last at SMU (9/19/15)  
 Assists 2 vs. #12 Oregon (9/7/15)  
 Service Aces 1 (3x) last vs. Clemson (9/18/15)  
 Digs 4 vs. Indiana (9/4/15)  
 Total Blocks 6 (2x) last vs. TCU (9/18/15)  
 Hitting Pct. .714 (5-0-7) vs. Prairie View A&M (8/28/15)

**Career Highs**

Kills 12 at Texas A&M (8/30/14)  
 Total Attacks 26 vs. Texas A&M (8/30/14)  
 Assists **2 (3x) last vs. #12 Oregon (9/7/15)**  
 Service Aces 2 (8x) last vs. North Texas (9/28/14)  
 Digs 7 at UAB (10/12/14)  
 Total Blocks 10 vs. Loyola Marymount (9/6/13)

**#16 Shelby Williams • 5-6 • DS • Fr. • New Braunfels, Texas**

**2015 Season Notes**

**2015 Season Highs**

Kills  
 Total Attacks 1 (2x) last vs. #12 Oregon (9/7/15)  
 Assists 3 vs. Prairie View A&M (8/28/15)  
 Service Aces 4 vs. Prairie View A&M (8/28/15)  
 Digs 21 (2x) last vs. Clemson (9/18/15)  
 Total Blocks  
 Hitting Pct.

**Career Highs**

Kills  
 Total Attacks  
 Assists  
 Service Aces  
 Digs  
 Total Blocks

**#17 Dajana Boskovic • 6-1 • OH • Jr. • Bileca, Bosnia & Herzegovina**

**2015 Season Notes**

Career hitting pct. - .800 (4-0-5) vs. Mississippi Valley State (9/14/13)

**2015 Season Highs**

Kills 26 at Sam Houston State (8/29/15)  
 Total Attacks 80 at Sam Houston State (8/29/15)  
 Assists 2 (2x) last vs. #12 Oregon (9/7/15)  
 Service Aces 2 vs. Prairie View A&M (8/28/15)  
 Digs 18 at Texas State (9/3/15)  
 Total Blocks 6 vs. #12 Oregon (9/7/15)  
 Hitting Pct. .565 (16-3-23) vs. Prairie View A&M (8/28/15)

**Career Highs**

Kills **26 at Sam Houston State (8/29/15)**  
 Total Attacks **80 at Sam Houston State (8/29/15)**  
 Assists 3 vs. Texas A&M-Corpus Christi (9/9/13)  
 Service Aces 3 vs. Rice (10/19/14)  
 Digs 18 at Texas State (9/3/15)  
 Total Blocks 9 vs. Southern Miss (10/11/13)

**#18 Tessa Dahnert • 6-0 • MH • Jr. • Cedar Park, Texas**

**2015 Season Notes**

Career hitting pct. - 1.000 (1-0-1) at Marshall (11/3/13)

**2015 Season Highs**

Kills 4 vs. Montana State (8/28/15)  
 Total Attacks 13 vs. Santa Clara (9/10/15)  
 Assists  
 Service Aces  
 Digs 2 (3x) last vs. Santa Clara (9/10/15)  
 Total Blocks 7 (2x) last vs. Santa Clara (9/10/15)  
 Hitting Pct. .667 (2-0-3) vs. Tulane (8/29/15)

**Career Highs**

Kills 8 vs. North Texas (10/20/13)  
 Total Attacks 15 vs. LSU (8/30/13)  
 Assists 1 (2x) last vs. Rice (10/19/14)  
 Service Aces 3 at Marquette (9/13/14)  
 Digs 3 (2x) last vs. Rice (10/18/13)  
 Total Blocks 9 vs. Rice (10/18/13)





**#20 Jessica Waldrip • 5-10 • S • Jr. • New Braunfels, Texas**

**2015 Season Notes**

Career hitting pct. - 1.000 (6x) last vs. TCU (9/18/15)(3-0-3)

**2015 Season Highs**

Kills	5 vs. Indiana (9/4/15)
Total Attacks	8 vs. Indiana (9/4/15)
Assists	50 at Sam Houston State (8/29/15)
Service Aces	3 at Sam Houston State (8/29/15)
Digs	10 at Sam Houston State (8/29/15)
Total Blocks	4 (2x) last vs. Tulane (8/29/15)
Hitting Pct.	1.000 (3-0-3)(4x) last vs. TCU (9/18/15)

**Career Highs**

Kills	<b>5 (2x) last vs. Indiana (9/4/15)</b>
Total Attacks	14 vs. Rice (10/18/13)
Assists	59 (2x) last vs. FIU (11/9/14)
Service Aces	4 vs. Baylor (9/20/14)
Digs	19 at Texas A&M (8/30/14)
Total Blocks	<b>4 (6x) last vs. Tulane (8/29/15)</b>

**#24 Daniella Villarreal • 5-5 • DS • Jr. • New Braunfels, Texas**

**2015 Season Notes**

Career hitting pct. - 1.000 (1-0-1) vs. Marshall (11/23/13)

**2015 Season Highs**

Kills	
Total Attacks	
Assists	1 (4x) last at SMU (9/19/15)
Service Aces	4 vs. Texas Southern (9/5/15)
Digs	13 vs. Clemson (9/18/15)
Total Blocks	

**Career Highs**

Kills	1 vs. Marshall (11/23/13)
Total Attacks	1 (4x) last vs. Florida Atlantic (9/26/14)
Assists	5 at Texas State (9/5/14)
Service Aces	<b>4 vs. Texas Southern (9/5/15)</b>
Digs	20 at Texas State (9/5/14)
Total Blocks	

**#26 Antonela Jularic • 6-1 • OH • Fr. • Vrbovec, Croatia**

**2015 Season Notes**

- Had the game-winning point against No. 12 Oregon

**2015 Season Highs**

Kills	14 vs. Clemson (9/18/15)
Total Attacks	47 vs. Clemson (9/18/15)
Assists	2 vs. Texas Southern (9/5/15)
Service Aces	2 vs. Montana State (8/28/15)
Digs	12 vs. Clemson (9/18/15)
Total Blocks	3 vs. Clemson (9/18/15)
Hitting Pct.	.191 (14-5-47) vs. Clemson (9/18/15)

**Career Highs**

Kills	
Total Attacks	
Assists	
Service Aces	
Digs	
Total Blocks	





## 2015 UTSA Volleyball Statistics

Overall record: 9-5 Conf: 0-0 Home: 1-1 Away: 1-3 Neutral: 7-1

#	Player	sp	Attack				Set		Serve			re	Dig		Blocking					points		
			k	k/s	e	ta	pct	a	a/s	sa	se		sa/s	dig	dig/s	bs	ba	total	blk/s		be	bhe
17	BOSKOVIC, Dajana	39	160	4.10	64	462	.208	9	0.23	5	17	0.13	15	95	2.44	2	21	23	0.59	3	0	-
7	RUNJIC, Marijeta	50	142	2.84	48	352	.267	3	0.06	7	9	0.14	2	26	0.52	5	25	30	0.60	3	1	-
6	KIEFER, Kasey	47	121	2.57	39	370	.222	2	0.04	0	3	0.00	6	43	0.91	1	11	12	0.26	0	0	-
15	SCHOTT, Kylie	49	87	1.78	14	186	.392	3	0.06	3	3	0.06	0	14	0.29	9	45	54	1.10	2	0	-
26	JULARIC, Antonela	35	54	1.54	34	221	.090	4	0.11	8	13	0.23	3	49	1.40	0	10	10	0.29	0	0	-
9	SLAN, Megan	38	49	1.29	9	90	.444	3	0.08	1	0	0.03	0	6	0.16	3	33	36	0.95	3	0	-
18	DAHNER, Tessa	25	22	0.88	11	64	.172	0	0.00	0	6	0.00	0	7	0.28	0	24	24	0.96	2	0	-
20	WALDRIP, Jessica	43	26	0.60	1	48	.521	380	8.84	12	21	0.28	1	70	1.63	1	26	27	0.63	6	3	-
5	GONZALES, Amanda	13	3	0.23	0	3	1.000	97	7.46	4	2	0.31	0	26	2.00	0	3	3	0.23	0	3	-
12	KOTARA, Jordan	5	1	0.20	3	10	-.200	0	0.00	2	0	0.40	0	4	0.80	0	0	0	0.00	0	0	-
1	BROUSSARD, Morgan	12	2	0.17	4	10	-.200	66	5.50	1	2	0.08	0	8	0.67	0	4	4	0.33	1	2	-
11	KUNES, Annie	53	1	0.02	0	3	.333	38	0.72	7	9	0.13	5	193	3.64	0	0	0	0.00	0	0	-
24	VILLARREAL, Daniella	28	0	0.00	0	0	.000	4	0.14	7	7	0.25	5	50	1.79	0	0	0	0.00	0	0	-
8	CRUZ, Laura	36	0	0.00	0	0	.000	2	0.06	5	8	0.14	7	62	1.72	0	0	0	0.00	0	0	-
16	WILLIAMS, Shelby	51	0	0.00	0	2	.000	13	0.25	10	16	0.20	7	173	3.39	0	0	0	0.00	0	0	-
UTSA		53	668	12.60	227	1821	.242	624	11.77	72	116	1.36	55	826	15.58	21	202	122.0	2.30	20	9	-
Opponents		53	636	12.00	326	1897	.163	579	10.92	55	83	1.04	72	771	14.55	16	154	93.0	1.75	25	14	-

Team Statistics	UTSA	OPP	Date	Opponent	Score	Score by set	Att.	
<b>ATTACK</b>								
Kills	668	636	Aug 28	vs Montana State	w 3-0	25-17,25-16,25-23	117	
Errors	227	326	Aug 28	vs Prairie View	w 3-0	25-13,25-13,25-14	101	
Total Attacks	1821	1897	Aug 29	at Sam Houston State	w 3-2	19-25,25-20,25-20,19-25,15-12	321	
Attack Pct	.242	.163	Aug 29	vs Tulane	w 3-0	25-16,25-14,25-19	94	
Kills/Set	12.6	12.0	Sep 03	at Texas State	L 2-3	21-25,25-20,14-25,25-19,14-16	2533	
<b>SET</b>								
Assists	624	579	Sep 04	vs Indiana	w 3-1	25-18,18-25,25-19,25-19	100	
Attempts	1761	1819	Sep 05	vs Texas Southern	w 3-0	25-12,25-14,25-13	100	
Assist Pct	.354	.318	Sep 07	#12 ORE	w 3-1	21-25,25-23,25-19,25-23	1051	
Assists/Set	11.8	10.9	Sep 10	SANTA CLARA	L 1-3	17-25,25-17,22-25,20-25	456	
<b>SERVE</b>								
Aces	72	55	Sep 11	at #4 Texas	L 0-3	29-31,21-25,14-25	1890	
Errors	116	83	Sep 11	vs Iona	w 3-0	25-17,25-9,25-19	120	
Attempts	1186	1061	Sep 18	vs TCU	L 1-3	25-18,23-25,15-25,21-25	102	
Serve Pct	.902	.922	Sep 18	vs Clemson	w 3-2	25-13,17-25,25-14,25-27,15-6	178	
Aces/Set	1.4	1.0	Sep 19	at SMU	L 1-3	17-25,17-25,25-21,23-25	328	
<b>SERVE RECEPTIONS</b>								
Errors	55	72						
Errors/Set	1.0	1.4						
Attempts	972	1061						
Reception Pct	.943	.932						
<b>DEFENSE</b>								
Digs	826	771						
Digs/Set	15.6	14.5						
<b>BLOCKING</b>								
Block Solo	21	16						
Block Assist	202	154						
Total Blocks	122.0	93.0						
Blocks/Set	2.3	1.8						
Block Errors	20	25						
Ball handling errors	9	14						
<b>ATTENDANCE</b>								
Total	1507	5072						
Dates/Avg Per Date	2/754	4/1268						
Neutral site #/Avg	8/114							
Current win streak	0	-						
Home win streak	0	-						

Record in 3-set matches:5-1 • Record in 4-set matches:2-3 • Record in 5-set matches:2-1



**1 Morgan BROUSSARD**  
S • 5-9 • Senior  
Gering, Nebraska



**5 Amanda GONZALES**  
S • 5-5 • Freshman  
New Braunfels, Texas



**6 Kasey KIEFER**  
OH • 6-0 • Junior  
Tempe, Arizona



**7 Marijeta RUNJIC**  
OH • 6-4 • Sophomore  
Trogir, Croatia



**8 Laura CRUZ**  
DS • 5-2 • Freshman  
Helotes, Texas



**9 Megan SLAN**  
MH • 6-0 • Sophomore  
Leander, Texas



**11 Annie KUNES**  
DS • 5-6 • Senior  
Fontana, Wis.



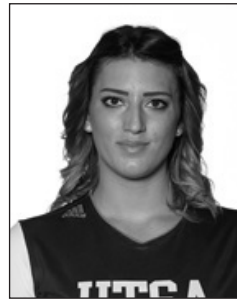
**12 Jordan KOTARA**  
MH/OH • 6-1 • Senior  
Poth, Texas



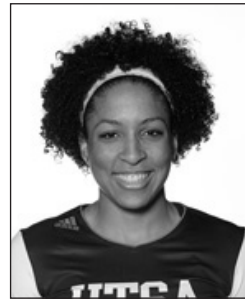
**15 Kylie SCHOTT**  
MH • 6-1 • Senior  
Cypress, Texas



**16 Shelby WILLIAMS**  
DS • 5-6 • Freshman  
New Braunfels, Texas



**17 Dajana BOSKOVIC**  
OH • 6-1 • Junior  
Bileca, Bosnia and Herzegovina



**18 Tessa DAHNERT**  
MH • 6-0 • Junior  
Cedar Park, Texas



**20 Jessica WALDRIP**  
S • 5-10 • Junior  
New Braunfels, Texas



**24 Daniella VILLARREAL**  
DS • 5-5 • Junior  
New Braunfels, Texas



**26 Antonela JULARIC**  
OH • 6-1 • Freshman  
Vrbovec, Croatia



**Laura NEUGEBAUER-GROFF**  
Head coach



**Pat STANGLE**  
Assistant coach



**Danka DANICIC**  
Assistant coach

### Pronunciation Guide

<b>Bileca</b>	be-LETCH-ah
<b>Dahnert</b>	DAY-nert
<b>Dajana Boskovic</b>	di-AH-nah
	BOSS-co-vitch
<b>Danka Danicic</b>	DON-kah
	DON-uh-chich
<b>Kiefer</b>	KEEF-er
<b>Kunes</b>	CUE-ness
<b>Marijeta Runjic</b>	mar-E-eta
	roon-itch
<b>Trogir</b>	troh-geer
<b>Neugebauer</b>	NEW-ga-bow-er
<b>Poth</b>	(rhymes with both)
<b>Slan</b>	(rhymes with can)
<b>Jularic</b>	you-LARRR-itch