



2015-16 UTEP WOMEN'S BASKETBALL

UTEP Athletic Communications | 500 W. University Ave. | Brumbelow Building | El Paso, Texas 79968-0579

Game 12 | Jan. 3, 2016 | 2 p.m. MST | Denton, Texas | The Super Pit

Overall Series: UTEP leads, 5-3

In Denton: North Texas leads, 3-2

Overall Streak: UTEP won, two

Last Meeting: UTEP 69, at North Texas 61, March 5, 2015

Internet: MeanGreenSports.com

Radio: 600 ESPN El Paso, KR0D-AM

Play-By-Play: Duke Keith

#5 THINGS

1. UTEP is taking aim at a 2-0 start in league play for the fifth straight year.
2. Overall a win against UNT would secure the eighth 2-0 start in league action.
3. UTEP is ranked 33rd in the latest NCAA women's RPI.
4. The Miners have picked up points in three straight Associated Press Top-25 polls.
5. UTEP has won seven straight league openers and is 10-5 in the situation under **Keitha Adams**.



UTEP MINERS (10-1, 1-0)

Head Coach: Keitha Adams (Southwestern, 1989)

Record at UTEP: 257-182 (15th year)

Overall Record: 384-219 (20th year)

Record vs. North Texas: 3-2

STAT LEADERS

PPG: Jenzel Nash (13.3)

RPG: Jenzel Nash (5.8)

APG: Starr Breedlove (4.1)

at



North Texas MEAN GREEN (6-5, 1-0)

Head Coach: Jalie Mitchell

Record at UNT: 6-5 (First year)

Overall Record: Same

Record vs. UTEP: 0-0

STAT LEADERS

PPG: C. Adams/K. Criner (11.1)

RPG: Acheil Tac (8.2)

APG: Kelsey Criner (4.6)

UTEP SCHEDULE

Date	Opponent	Time
Nov. 7	St. Mary's&	W, 66-50
Nov. 15	Houston Baptist	W, 98-63
Nov. 17	Northern Arizona	W, 77-66
Nov. 22	Hampton	W, 78-54
Nov. 27	Idaho State 65, SE Missouri 64! (game 1)	
	UC Riverside!	W, 68-57
	(game two)	
Nov. 28	UC Riverside 85, SE Missouri 67! (Third/Fourth-Place Game)	
	Idaho State!	W, 67-54
	(Championship Game)	
Dec. 2	New Mexico	W, 70-62
Dec. 5	at New Mexico State	W, 71-65
Dec. 14	UTPB	w, 86-32
Dec. 18	at Long Beach State%	L, 40-47
Dec. 19	vs. UNLV%	W, 60-52
Dec. 28	Eastern New Mexico	Cancelled
Jan. 1	at Rice*	W, 60-54
Jan. 3	at North Texas*	2 p.m.
Jan. 7	Middle Tennessee*	7:05 p.m.
Jan. 10	UAB* (Fox Sports)	5 p.m.
Jan. 17	UTSA* (TV)	1 p.m.
Jan. 21	at Florida Atlantic*	5 p.m.
Jan. 23	at FIU*	2 p.m.
Jan. 28	Southern Miss*	7:05 p.m.
Jan. 30	Louisiana Tech*	2:05 p.m.
Feb. 4	at Marshall*	4 p.m.
Feb. 6	at WKU* (Fox Sports)	1 p.m.
Feb. 11	FIU*	7:05 p.m.
Feb. 13	Florida Atlantic*	2:05 p.m.
Feb. 18	at Southern Miss*	5 p.m.
Feb. 20	at Louisiana Tech*	5 p.m.
Feb. 25	Old Dominion*	7:05 p.m.
Feb. 27	Charlotte*	2:05 p.m.
March 3	at UTSA*	6 p.m.
March 8	TBD^	TBA
March 9	TBD^	TBA
March 10	TBD^	TBA
March 11	TBD^	TBA
March 12	TBD^	TBA

Bold denotes home game

All Times Mountain

& Exhibition Game

! Fifth-annual UTEP Thanksgiving Classic

% 2016 Beach Classic (Long Beach Classic)

* Conference USA Game

^ Conference USA Championships All times Mountain

THE OPENING ACT

- UTEP (10-1, 1-0 C-USA) will wrap up its first weekend of league action by playing at North Texas (6-5, 1-0 C-USA) at 2 p.m. MST. For Miner fans in the area, tickets are general admission and may be purchased for \$7.
- **Duke Keith** will have the call on 600 ESPN El Paso, KR0D-AM Radio. Fans can also get updates by following @UTEPWBB on Twitter.

- UTEP is taking aim at a 2-0 start in league play for the fifth straight year and eighth time overall. Six of those occasions have been during the **Keitha Adams** era ('14-15, '13-14, '12-13, '11-12, '07-08 and '06-07).
- UTEP is ranked 33rd in the latest NCAA women's RPI while it has picked up points in three straight Associated Press Top-25 polls.

- UTEP has won six straight league openers and is 9-5 in the situation under **Keitha Adams**.

- 8-2 in league lidlifters since joining C-USA in 2005-06.

- 13-21 all time in conference openers, with readout of 4-16 prior to Adams being the biggest factor in record.

NEW FORMAT

- NCAA women's basketball games will be played in four 10-minute quarters for the '15-16 season.

- Teams will now reach the bonus and shoot two free throws on the fifth team foul in each quarter. In the four-quarter format, team fouls reset to zero at the start of each quarter.

- Teams now have four timeouts (three 30s, one 60), three which carry over to the second half. They will be able to advance the ball to the frontcourt after a timeout with less than 59.9 seconds in 4Q.

- There are seven media timeouts (four under five minutes in quarter/first called), two intermission media timeouts (after first and third quarters) and the first team-called timeout during the second half.

Bands or amplified music may now play during any dead ball.

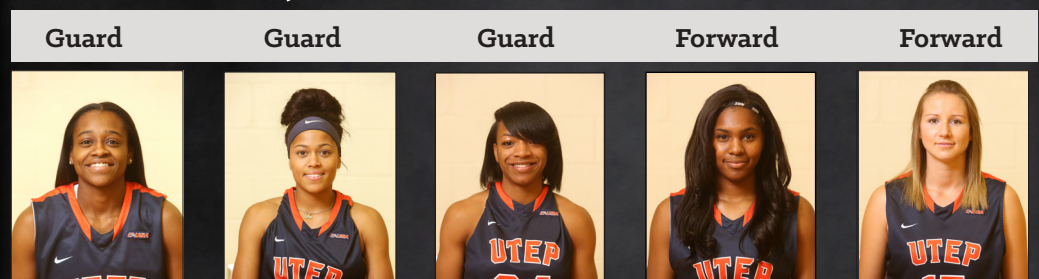
INSIDE THE SERIES

- UTEP leads the series, 5-3, aided by a sweep during 2014 Conference USA action.

- The Mean Green maintain a 3-2 edge in Denton, but the Miners picked up a 69-61 victory last year.

- The Miners are 3-2 against UNT under head coach **Keitha Adams**, including 2-1 since the Mean Green joined C-USA.

#PROJECTED MINER STARTERS



#1 Breedlove
5-6, R-Sr.-TR

#2 Turner
5-9, Sr.-3L

#24 Nash
5-7, R-Jr.-2L

#12 Taylor
5-10, Jr.-2L

#15 Dobrowolska
6-3, Sr.-2L

WHO TO CONTACT

UTEP MEDIA RELATIONS WOMEN'S BASKETBALL CONTACT

Mark Brunner | MR

Office: (915) 747-5722

Cell: (915) 472-6038

E-mail: mbrunner@utep.edu

Media Relations Fax | (915) 747-5444

INTERVIEWS & PRACTICE COVERAGE

Please contact Mark Brunner with all interview requests for coaches and players. Do not contact players at home or on their cell phones unless arranged by the media relations office.

ON THE INTERNET

UTEP's official athletic department website is located at www.utepathletics.com. Game notes, statistics, press releases, coaches' shows and player/coach biographies are available on the site. The Conference USA website is located at www.conferenceusa.com.

GENERAL INFORMATION

Location	El Paso, Texas
Enrollment	23,079
Founded	1914
Nickname	Miners
Colors	Dark Blue, Orange, Silver Accent
Affiliation	NCAA Division I
Conference	Conference USA
President	Dr. Diana Natalicio
Director of Athletics	Bob Stull
Assoc. AD/SWA	Julie Levesque
Faculty Representative	Dr. Stephen Aley
Basketball Administrator	Julie Levesque

BASKETBALL INFORMATION

Head Coach	Keitha Adams
Alma Mater	Southwestern College / 1989
Overall Record	384-219 (20th year)
UTEP Record	257-182 (15th year)
Conference USA Record	99-64 (11th year)
Associate Head Coach	Ewa Laskowska (15th year)
Alma Mater	Pittsburg/1998
Assistant Coach	Bill Damuth (Sixth year)
Alma Mater	University of Texas, Tyler/1995
Assistant Coach	Kelli Willingham Bagley (First year)
Alma Mater	University of Texas, Tyler/1995
Basketball Phone	(915) 747-8605
Letterwinners R/L	10/3
Starters R/L	3/2
Newcomers	6
2014-15 Overall Record	12-16
2015 Conference USA Record	7-11 (11th)
2015 C-USA Championship	0-1 (lost first round)
Postseason	None
First Season of Program	1974-75
All-Time Record	520-621 (42nd season)
Home	332-205
Away	132-344
Neutral	56-72
NCAA Tournament Record	1-2 (1-1 in '08; 0-1 in '12)
WNIT Record	5-1 (runner-up in 2014)

GETTING TO KNOW NORTH TEXAS

Overall: 6-5 Home: 3-3 Road 3-2 Neutral 0-0

- Finished 5-5 in non-conference play, including the program's first win against a ranked team (W, 61-57, at #17 Oklahoma, 11/16/15).
- Enters the match-up with UTEP on a season-high three-game winning streak, including beating UTSA, 68-58, in its Conference USA opener on Jan. 1.
- The six wins on the year already surpass last season's total and NT is above .500 through 11 contests for the first time at the school since the '11-12 campaign.
- Holding foes to 58.9 points per game (5th C-USA/86th nation) while making
- Nailing 35.3% from three-point range (3rd C-USA/49th nation).
- Plagued with 20.0 turnovers/game (13th C-USA/315th nation).
- Balanced offensive attack with five players scoring between 7.8-11.1 ppg. Three (Candice Adams-11.1, Kelsey Criner-11.1 and Acheil Tac-10.5) are in double figures while Terra Ellison (9.5) is just shy.
- Criner is all-around performer with 11.1 ppg, 5.7 rpg, 2.4 steals/game (5th C-USA/89th nation) and 4.6 assists/game (4th C-USA/78th nation).
- Bria Frierson (23), Teadra Jones (22) and Tac (21) all have 20+ offensive boards in just 11 games.
- Notable alumni include "Stone Cold" Steve Austin (professional wrestler), Jeff Coffin (Jazz saxophones member of Dave Matthews band) and "Mean" Joe Green (NFL Hall of Famer).

GOING BACK IN TIME

(UTEP 60, at Rice 54, 1/1/16)

- **Starr Breedlove** (15 points), **Jenzel Nash** (12 points) and **Sparkle Taylor** (10 points) all reached double figures in scoring, and UTEP defended with a vigor in dispatching Rice, 60-54, on the road in the Conference USA opener for both squads on Jan. 1.
- For just the second time this year, UTEP trailed (37-36) entering the fourth quarter. It stormed back down the stretch to pick up the win. The Miners opened up the final quarter on a 13-7 run on the way to outscoring the home side, 24-17, over the final 10 minutes.
- It was a defensive-minded contest, with both the Miners (21-60, 35.0%, 17 turnovers) and Owls (17-52, 32.7%, 17 turnovers) making offensive execution difficult with their pressure.
- But UTEP found some separation through its effort on the glass (44-35), in addition to holding a 16-6 advantage in points off turnovers and an 18-9 cushion for second-chance points.
- **Agata Dobrowolska** paced the squad with seven rebounds. She was particularly effective on the offensive end with four, including three in the final 2:07 of the game that led to five second-chance points.
- Breedlove also got after it on defense with a career-high tying five steals.

THE RUNDOWN ON UTEP'S 2015-16 SEASON

Overall: 10-1 Home: 7-0 Road 2-1 Neutral 1-0

- Bolted out to the third-best start (8-0) in program history before falling, 47-40, at Long Beach on Dec. 18.
- Bounced back 22 hours later to topple UNLV, 60-52, to conclude non-conference play at 9-1.
- It marked the fourth time in program history to wrap up non-league play with just one loss. The Miners were 12-1 in 2012-13, 11-1 in 2006-07 and 8-1 in 1996-97. It was also the 14th straight year to head into conference action at .500 or better, including 11 consecutive outright winning marks.
- Knocked off Rice, 60-54, on Jan. 1 to secure seventh straight win in Conference USA opener and improve to 9-2 in league lidlifters since joining the league in '05-06.
- Holding foes to 55.1 ppg (2nd C-USA/36th nation), with pressure defense playing a big role. The Miners are recording 12.3 steals/game (1st C-USA/11th nation), forcing 22.7 turnovers/game (1st C-USA/12th nation), keeping opponents to 34.2 percent (1st C-USA/24th nation) from the floor and blocking 4.7 shots/game (3rd C-USA/69th nation).
- No slouch on offense, with a scoring offense of 70.5 ppg (4th C-USA/93rd nation). Has hit 42.3 percent from the floor (4th C-USA/92nd nation), made 159 free throws (2nd C-USA/100th nation) out of 235 attempts (1st C-USA/98th nation).
- All of those factors add up to a +15.4 scoring margin (2nd C-USA/44th nation).
- Five players (all guards) putting up between 7.8-13.2 ppg. **Jenzel Nash** (13.2 ppg) tops the list, followed by **Starr Breedlove** (10.5), **Sparkle Taylor** (10.3), **Cameasha Turner** (10.2) and **Lulu McKinney** (7.8).
- Breedlove (3.2-1st C-USA/15th nation), Nash (2.3- 7th C-USA/104th nation) and Turner (1.9-13th C-USA/221st nation) are among league and national leaders for steals/game.
- Breedlove also in ratings for assist-to-turnover ratio (1.33-10th C-USA/202nd nation) and assists/game (4.0-8th C-USA/128th nation).
- Team effort on the glass with six Miners (Nash-5.7, **Chrisauna Parker (injured)**-4.8, Turner-4.4, **Daeshianna McCants**-3.5, **Agata Dobrowolska**-3.4 and Taylor-3.0 grabbing +3.0 boards/game.
- Every player earning at least 6.0 minutes per game, including 11 at +10.0 mpg. Turner tops list at 28.2.
- Miner back-ups are outscoring the opposition by a count of 318-134 (28.9 ppg-12.2 ppg).
- Injury bug has hit with Parker (seven), Taylor (two), **Lawna Kennedy** (one) and **Anete Kirsteine** (one) all missing at least one game this year. One impact has been nine different starting line-ups in 11 tilts.

STATISTICAL COMPARISON

UTEP	CATEGORY	NORTH TEXAS
10-1	Win-Loss	6-5
W 2	Current Streak	W 3
9-1	Record In Last 10 Games	6-4
70.5	Scoring Offense	58.5
55.1	Scoring Defense	58.9
42.3	Field-Goal Percentage	40.7
34.2	Field-Goal Percentage Defense	37.8
29.4	Three-Point Percentage	35.3
28.9	Three-Point Percentage Defense	31.0
67.7	Free-Throw Percentage	64.7
40.6	Rebounds Per Game	36.9
+3.2	Rebounds Margin	+3.3
12.5	Assists Per Game	12.3
17.4	Turnovers Per Game	20.0
+4.9	Turnovers Margin	-2.4
12.3	Steals Per Game	5.7
4.7	Blocks Per Game	1.5

2015-16 C-USA STANDINGS

Team	C-USA	Overall	Last 10	Streak
UTEP (RV)	1-0	10-1	9-1	W 2
North Texas	1-0	6-5	5-5	W 3
WKU	1-0	10-2	9-1	W 7
Florida Atlantic	0-0	7-3	7-3	W 2
Charlotte	0-0	7-4	6-4	L 1
UAB	0-0	7-4	7-3	W 5
Southern Miss	0-0	7-4	6-4	W 1
Middle Tennessee	0-0	6-5	6-4	L 1
Louisiana Tech	0-0	5-6	5-5	L 1
Old Dominion	0-0	4-8	3-7	L 1
FIU	0-0	2-9	1-9	L 5
Marshall	0-1	10-2	8-2	L 1
UTSA	0-1	4-7	4-6	L 3
Rice	0-1	1-11	1-9	L 4

Through All Games Played On Jan. 1

AROUND CONFERENCE USA

SUNDAY, JANUARY 3

*Old Dominion at Charlotte (FOX Sports)	11 a.m.
*FIU at Florida Atlantic	12 p.m.
*UTSA at Rice	1 p.m.
*UAB at Middle Tennessee	1 p.m.
*UTEP at North Texas	2 p.m.

*Conference USA Games | All Times Mountain

WHAT'S TRENDING

DEFENSE

- Allowed less than 55 points in four straight contests for the first time since '12-13 season. The '06-07 (five straight) and '11-12 (10 straight) and five straight) also did so during the **Keitha Adams** era.
- Hasn't allowed more than 66 points in first 11 games to equal the longest such stretch to start a year. The '96-97 Miners also did so before conceding 67+ points in games 12-14.
- Kept foes to less than 33% from the floor for four consecutive games for the second time since '83-84 (prior records incomplete). The '03-04 squad also achieved the feat.
- Forced 20+ turnovers in nine of 11 games this year.

OFFENSE

- Posted season-high 19 offensive rebounds at Rice (1/1/16); 10+ offensive boards in 10 of 11 contests.
- Hit 73.3 percent (11-15) on free throws at Rice; was combined 57.5 percent (46-80) in prior four games.
- Averaged 53.3 points the past three games, with 21.7 turnovers/game factoring in.
- Put up 76.7 ppg first eight contests with just 15.8 turnovers/game in the stretch.

INDIVIDUALS

- **Starr Breedlove** tallied 15 points at Rice; scored three points (all free throws) and 0-15 FGs prior two tilts.
- Breedlove has recorded 4+ steals in five straight games to become the second Miner since '83-84 (prior records incomplete) to achieve the feat. **Sharon Jackson** put together six consecutive contests that year.
- Breedlove is lone Miner with at least one assist in every game.
- **Agata Dobrowolska** has averaged 4.4 points and 6.0 rebounds in 18.6 minutes the past five games. She had put up 1.3 ppg and 1.2 rpg in 5.7 mpg over the season's first six tilts.
- **Lawna Kennedy** tallied a season-high six points at Rice, aided by going 4-4 at the line. She was 3-8 at the charity stripe in her first nine appearances of the year.
- **Anete Kirsteine** has hit 3-5 triples in her past two appearances; she was 1-8 in her first five games.
- **Jenzel Nash** has grabbed 3+ offensive boards in three of past four and seven tilts total this year.
- Nash hit 87.5% (35-40) on free throws the first eight games; she is at 50.0% (6-12) in three games since.
- **Cameasha Turner** was 1-5 from floor at Rice; she had hit combined 54.1% (20-37) the prior six contests.
- Turner has grabbed 14 boards past two tilts to nearly match total (15) the prior four.
- **Sparkle Taylor** has 10+ points in three of past four games to top total of such games (two) to start year.
- Taylor earned the first start of the season at Rice and logged a campaign-high 22 minutes of action.
- **Wiktorija Zapart** equaled her career high for offensive boards (two) at Rice.

THE BASIC FACTS ON UTEP

- UTEP is 520-621 in its 42nd season as a women's basketball program, including 10-1 this year.
- Five 20+ win seasons (all since 2006-07), including three straight (2012-14) for the first time at school.
- Two regular-season league championships (2008 & 2012) & one league tourney title (2012).
- Became first C-USA women's team to go 16-0 while claiming initial league title in 2008.
- Finished 15-1 in 2012 & won C-USA tournament.
- Own C-USA single-season record for winning streak at 23, which was set in 2007-08.
- Made three postseason appearances, including the 2014 WNIT where it earned runner-up honors.
- Appeared in 2008 (at-large bid, #7 seed) and 2012 NCAA Tournament (automatic bid, #13 seed).
- Faced #4 seed and #12 in polls Penn State in the 2012 NCAA First Round. The game was tied at the half (39-39) before Penn State pulled away for the 85-77 victory (3/18/12).
- Beat #10 seed Western Kentucky, 92-60 (3/22/08) in the first round of '08 "Big Dance."
- Bowled out with 88-54 loss at two-seed & #4 seed and eventual national-runner up Stanford.
- The University of Texas at El Paso (founded in 1914) recently enjoyed a centennial celebration.
- Notable alumni include former ABC News Chief White House Correspondent **Sam Donaldson**, well-respected NFL referee **Ed Hochuli**, former NASA astronaut **Danny Olivas** engineer & **Dennis Poon**, who designed Taipei 101 & some of the tallest buildings in the world.

THE ADAMS FILE

- UTEP is under the direction of 15th-year head coach **Keitha Adams**.
- Adams is a two-time C- USA Coach of the Year ('08 and '12) is UTEP's all-time win leader at 257-182.
- Overall she stands at 384-219 in her 20th year as a collegiate head coach, making her one of two active C-USA coaches (Southern Miss' Joye Lee-McNelis is the other) with 300+ career collegiate wins
- All five 20+ win seasons and six of the seven with 18+ have been during her tenure.
- She is responsible for all three postseason bids (NCAA in 2008 and 2012; WNIT 2014) and all three league championships (2008 C-USA regular season; 2012 C-USA regular season and conference tournament) in school history.
- Twenty of the 23 major individual career records at the school are held by players from her era.
- Posted at least 16 wins in nine seasons; there were three such campaigns in program's first 27 years.
- More than 100 games above .500 (216-108) since joining Conference USA for the 2005-06 season.
- Earned votes in top-25 poll in seven seasons (2015-16, 2013-14, 2012-13, 2011-12, 2008-09 and 2007-08).
- Nationally ranked for final six weeks of '2007-08.
- Never achieved national ranking, let alone even earn points in a poll, before Adams's era.
- UTEP has compiled 50 separate months with a winning percentage of .500 or better under Adams compared to just 20 with a losing record. Eight of those 20 came in her first two years.

UTEP UNDER COACH ADAMS

	2015-16	Adams Era
At home	7-0	169-63
On road	2-1	64-103
At neutral sites	1-0	24-16
In overtime	0-0	8-7
Decided by 3 points or less	0-0	30-25
Decided by 4-5 points	2-0	18-26
Decided by 6-10 points	2-1	57-40
Decided by 11-20 points	3-0	92-53
Decided by 21-plus points	3-0	60-38
Led after first quarter	8-0	Same
Tied after first quarter	2-1	Same
Trailed after first quarter	0-0	Same
Led at Half	10-0	196-41
Tied at the half	0-0	10-2
Trailed at the half	0-1	51-139
Led after third quarter	9-0	Same
Tied after third quarter	0-0	Same
Trailed after third quarter	1-1	Same
Shot 50% or better	2-0	42-3
Shot 40-49.9%	4-0	141-47
Shot less than 40%	4-1	74-132
Opp. shot 50% or better	0-0	5-30
Opp. shot 40-49%	3-0	58-92
Opp. shot less than 40%	7-1	194-60
UTEP 40% or better on 3s (min. 5)	1-0	84-21
Out-rebounded opp.	7-0	173-58
Opp. out-rebounded UTEP	3-1	77-119
Rebounds are equal	0-0	7-5
More turnovers than opp.	1-1	65-106
Less turnovers than opp.	8-0	184-66
Turnovers equal	1-0	8-10
Scored 90-plus points	1-0	13-0
Scored 80-89 points	1-0	60-4
Scored 70-79 points	4-0	86-20
Scored 60-69 points	4-0	81-52
Scored 50-59 points	0-0	12-66
Scored less than 50 points	0-1	5-40
Allowed 90-plus points	0-0	0-11
Allowed 80-89 points	0-0	4-29
Allowed 70-79 points	0-0	29-55
Allowed 60-69 points	4-0	87-52
Allowed 50-59 points	5-0	90-30
Allowed less than 50 points	1-1	47-5
On Mondays	1-0	10-6
On Tuesdays	1-0	19-11
On Wednesdays	1-0	21-12
On Thursdays	0-0	52-40
On Fridays	2-1	36-30
On Saturdays	3-0	73-51
On Sundays	2-0	46-32
On National TV	0-0	12-11
In November	5-0	51-24
In December	4-1	64-29
In January	1-0	65-48
In February	0-0	51-56
In March	0-0	25-24
In April	0-0	1-1
In day games	5-0	100-60
In night games (5 p.m. or later)	5-1	157-122
Wearing white/pink uniforms	5-0	158-56
Wearing navy uniforms	1-0	60-108
Wearing orange uniforms	4-1	39-18

- Coached 20 players who have gone on to play professionally, including '08 WNBA draft picks **Izabela Piekarska & Natasha Lacy**.
- Impacted the international game at the highest level, with **Noni Wharemate** representing New Zealand at '08 Olympic Games.
- Every player who has exhausted her eligibility at UTEP during her tenure has graduated.

WHAT A DIFFERENCE A YEAR MAKES

- Last year UTEP was faced with the daunting task of replacing the most successful senior class (**Kayla Thornton, Kristine Vitola and Kelli Willingham**) in program history. That task was made even harder with anticipated leaders **Jenzel Nash** and **Chrishauna Parker** missing the 2014-15 season.
- The result was a young UTEP squad going through some growing pains on the way to finishing at 12-16, which marked the program's first losing season since 2005-06 (14-16).
- Things are looking up in 2015-16, with the Miners (10-1) just two win's shy of matching last year's total.
- From a pure statistical standpoint, the Miners returned plenty of talent, evidenced by the chart below.

2015-16 RETURNING & LOST STAT BREAKDOWN

Category	Returned	Lost*	'14-15 Totals	% Returned For '15-16
Blocked Shots	77	13	90	85.6%
FT Made	308	79	387	79.6%
Steals	181	49	230	78.7%
Rebounds	827	257	1084	76.3%
Points	1360	479	1839	74.0%
FG Made	473	172	645	73.3%
Minutes Played	3953	1647	5600	70.6%
Assists	233	115	348	67.0%
3FG Made	106	56	162	65.4%

THIRD-BEST IN TEXAS SINCE '06-07

- The Miners have the third-most wins among all DI programs in Texas since 2006-07.
- Recent national champions & 2014 NCAA Elite 8 participants Baylor (293-45) and Texas A&M (249-79) lead the way while UTEP (202-92) has a firm grip on third. Texas (190-119) is fourth followed by Lamar (180-116). TCU (177-121-sixth), Stephen F. Austin (167-125-seventh), Prairie View A&M (166-135-eighth), SMU (161-130-ninth) and Texas Tech (160-141-tenth) round out the top 10.

SPECIAL RUN

- 102-39 since the start of '11-12 season (10-1 this year), with 66 double-digit wins.
- Qualified for postseason play in two of the four campaigns. Posted 5-1 record en route to earning runner-up honors at the 2014 WNIT while landing an at-large bid to the 2012 NCAA Tournament after winning both the 2012 C-USA regular season and tournament title
- Enjoyed 13 separate winning streaks of at least three games.
- Contrast that with one three-game losing skid & one six-game setback streak.

CHECK THE STATS

- 10-0 on season and 196-41 under **Keitha Adams** when leading at the break.
- 7-1 on year and 194-60 under Adams when keeping foes to less than 40 percent from the floor.
- 6-0 on year and 183-50 under Adams when making better than 40% from the floor.
- 7-0 on season and 173-58 under Adams when winning the rebounding battle.
- 6-1 on year and 137-35 under Adams when allowing less than 60 points.
- 4-1 on season and 85-13 under Adams when opposition has more turnovers than field goals.
- 1-0 on year and 84-21 under Adams when making 40% or better on 3 pointers (min. five 3PM).
- 2-0 on season and 72-4 under Adams with 80+ points.

HOME SWEET HOME

- Perfect 6-0 mark during the second-longest homestand to start a season in program history.
- 7-0 in '15-16 and 67-14 in El Paso since '11-12
- 168-51 at home since '02-03
- Finished 9-6 last year to post 13th straight season with a winning record at home

ALL ABOUT THE FANS

- Ranked in the top-50 nationally for three of the past four years
- Placed 28th in 2013-14 (3,793 avg.), 42nd in 2012-13 (2,708 avg.) & 46th in 2011-12 (2,639 avg.)
- 20-2 under head coach **Keitha Adams** in home games with 4,000+ fans.

TRAVEL TIME

- Opened up '15-16 road slate with a 71-65 victory at NM State on Dec. 2.
- Effort snapped the Aggies' 17-game home winning streak.
- Fell, 47-40, at Long Beach State on Dec. 18 in only other non-conference road contest.
- Improved to 2-1 on the road after knocking off Rice, 60-54, last time out on Jan. 1.

MISCELLANEOUS STATS

When This Player Starts	2015-16 Record	Career Record
Chrishauna Parker	4-0	61-19
Cameasha Turner	10-1	54-25
Jenzel Nash	10-0	14-1
Sparkle Taylor	1-0	11-10
Lawna Kennedy	4-0	10-10
Starr Breedlove	10-1	Same
Agata Dobrowolska	5-1	8-3
Daeshianna McCants	3-1	6-5
Lulu McKinney	0-1	3-10
Tamara Seda	2-0	Same
Anete Kirsteine	0-0	1-0
Rudiane Eduardo	1-0	1-1

Double-Figure Scoring	15-16	Career
Jenzel Nash	8	33
Cameasha Turner	6	32
Chrishauna Parker	0	28
Sparkle Taylor	5	25
Lulu McKinney	2	12
Starr Breedlove	8	Same
Anete Kirsteine	1	4
Lawna Kennedy	0	2
Daeshianna McCants	0	2
Agata Dobrowolska	1	Same

Double-Figure Rebounding	15-16	Career
Chrishauna Parker	0	29
Cameasha Turner	0	4
Sparkle Taylor	0	2
Agata Dobrowolska	1	Same
Lawna Kennedy	0	1

Double-Doubles	15-16	Career
Chrishauna Parker	0	15
Cameasha Turner	0	4
Sparkle Taylor	0	2
Agata Dobrowolska	1	Same

2015-16 STARTING LINE UPS	RECORD
Breedlove, Nash, Turner, Parker and Kennedy	2-0
Breedlove, Nash, Turner, McCants and Dobrowolska	2-0
Breedlove, Nash, Turner, Taylor and Dobrowolska	1-0
Breedlove, Nash, Turner, Dobrowolska and Seda	1-0
Breedlove, Nash, Turner, Parker and Seda	1-0
Breedlove, Nash, Turner, Parker and Eduardo	1-0
Breedlove, Nash, Turner, McCants and Kennedy	1-0
Breedlove, Nash, Turner, Dobrowolska and Kennedy	1-0
Breedlove, McKinney, Turner, McCants and Dobrowolska	0-1

- 64-103 on the road under head coach **Keitha Adams**, hindered by 15-52 mark her first five years.
- 50-51 since the start of the 2006-07
- 26-20 since the start of the 2011-12 season
- Posted three winning road records under Adams, a feat never achieved prior to Adams's tenure.
- Recorded five campaigns with a mark of .500 or better under Adams.
- That happened just twice in the first 27 years of the program.

CAREER ACHIEVEMENTS

- Redshirt-senior **Chrishauna Parker** (currently sidelined with injury) the only player in program history to rank in the top 10 for career rebounds (747-4th) and assists (270-6th). She is sixth in double-doubles (15), eighth in free throws made (234) and attempts (373). Parker is also a member of the 700-point club (743-28th), fifth for most wins (89), tied eighth for starts (81), 14th for minutes (2,540), tied 19th for games played (102), 22nd for steals (100) and games played (101) and 27th in field goals made (250).
- Senior **Cameasha Turner** is 23rd all time in scoring (769). She is also 11th for starts (79), 13th for wins during a career (73), 16th for free-throws made (197) and minutes played (2,264) tied 16th for steals (117), 17th in free-throws attempted (273) three-pointers made (66), and three-pointers attempted (214), 19th in assists (161), tied 19th for games played (102) and 26th in field goals made (253).
- Junior **Jenzel Nash** is 32nd for scoring (699). She is also 14th for wins during her career (68), 20th in free throws made (188), 21st in steals (104), 31st for field-goals made (238) and tied 35th in games played (77).
- Junior **Sparkle Taylor** (570-40th) joined the 500+ point club this year. She, along with seniors **Agata Dobrowolska** and **Anete Kirsteine** are tied for 27th for career wins (51).
- Sophomore **Daeshianna McCants** has blocked 11 shots this year to lift her career total to 34. The effort has allowed her to climb into a tie for 14th all time at UTEP. Overall 19 Miners have 30+ blocked shots.

LOOKING AHEAD

- The Miners will challenge defending regular-season C-USA champion Middle Tennessee in their league home opener at 7:05 p.m. MST Thursday.
- The contest will mark the start of a three-game homeswing, with UAB (5 p.m., Jan. 10) and UTSA (1 p.m. Jan. 17) also set to invade the Don Haskins Center.

CLIFFNOTES ON THE '15-16 SEASON

(UTEP 60, vs. UNLV 52, 12/19/15)

- **Sparkle Taylor** came off the bench to pour in a season-high 19 points, and UTEP gave UNLV fits with its defense in 60-52 victory to close out play at the 2015 Long Beach Classic on Dec. 19
- The Miners won the rebounding battle (46-41), held the Lady Rebels to 31.7 percent (19-60) from the floor and forced 21 turnovers to pick up an impressive victory less than 24 hours after sustaining their first setback of the season (L, 47-40, at Long Beach State, Dec. 18).
- **Lulu McKinney** contributed 12 points from the pine to join Taylor in double figures while **Tamara Seda** equaled her career high (eight points) in her second career start.
- **Cameasha Turner** pitched in five points while pulling down eight boards to pace the Miners in that department. **Jenzel Nash** flirted with a double-double (seven points, seven boards). Taylor also got after it on the glass with six while freshman **Najala Howell** pitched in five points and five boards (career high) in 19 minutes of action.
- UTEP's benched outscored the Lady Rebels, 39-3.
- UNLV jumped out to an early 9-4 advantage (6:08 1Q) before the Orange and Blue took over. They peeled off 12 consecutive points to gain control. UTEP led by 12 (28-16) at the half.
- The Miners pushed the advantage out to 22 (60-38) with 5:04 to play, allowing them to win comfortably despite UNLV tallying 14 consecutive points to close out the contest.

(at Long Beach State 47, UTEP 40, 12/18/15)

- UTEP was dealt its first loss of the season after falling in a defensive struggle at Long Beach State, 47-40, on Dec. 18.
- The Miners, who trailed by 21 (47-26) with 6:16 to play in the contest, showed tremendous character by refusing to quit. They closed the game on a 14-0 surge before running out of time, allowing the 49ers to escape with the victory.
- UTEP held Long Beach to 29.5 percent (18-61) from the floor and forced 24 turnovers, but it was doomed by some issues of its own. The Miners committed a season-high 26 giveaways and shot 31.3 percent (15-48), in addition to enduring a 38.1 percent effort (8-21) at the charity stripe.
- **Jenzel Nash** tallied 13 points to pace the Miners, who slipped to 47-5 under head coach **Keitha Adams** when holding foes to less than 50 points. **Sparkle Taylor** pitched in seven points-all in the final 2:56 of the contest- to buoy Nash while Cameasha Turner added five.

(at UTEP 86, UTPB, 12/5/15)

- UTEP set a program record for field-goal percentage defense while also forcing 31 turnovers on the way to thumping Division II UTPB, 86-32, at home on Dec. 14.
- The Miners held the Falcons to 16.7 percent (8-48) from the floor, including 7.4 percent (2-27) in the second half, to help secure the third start of at least 8-0 to a year in program history.

2014-15 RESULTS

NOVEMBER (2-2)

7	St. Mary's&	W, 77-50
14	New Mexico State	W, 78-73
16	at SMU	L, 59-63
19	Northern Arizona	W, 82-58
25	vs. Kansas State%	L, 43-72.
26	vs. LSU%	Cancelled
27	Santa Clara%	Cancelled

DECEMBER (3-2)

2	Eastern New Mexico	W, 84-49
6	Houston Baptist	L, 77-87
14	at New Mexico	L, 57-72
20	Prairie View A&M	W, 86-48
28	Alcorn State	W, 63-53.

JANUARY (3-6)

2	North Texas*	W, 60-58
4	Rice*	W, 54-51
8	at Louisiana Tech*	L, 72-90
10	at Southern Miss*	W, 70-59
17	UTSA*	L, 53-55
22	#24 WKU*	L, 74-80
24	Marshall*	L, 71-76
29	at UAB*	L, 52-67
31	at Middle Tennessee*	L, 53-74

FEBRUARY (3-3)

5	Florida Atlantic*	L, 63-68
7	FIU*	W, 72-56
12	at Charlotte*	W, 75-72
14	at Old Dominion*	L, 50-79.
21	at UTSA*	L, 59-72
27	Louisiana Tech*	W, 88-75

MARCH (1-2)

1	Southern Miss* (FSN)	L, 60-66
5	at North Texas*	W, 69-61
7	at Rice*	L, 62-79
11	at UAB^ (ASN)	10 a.m.
12	vs. Southern Miss^	10 a.m.
13	C-USA Semifinals^	9 a.m.
14	C-USA Championship^	6 p.m.

& Exhibition Contest

% 2014 Hardwood Tournament of Hope

(Puerto Vallarta, Mexico)

* Conference USA Game

^ Conference USA Championships

(Birmingham, Ala.)

All times Mountain

2014-15 STAT LEADERS

Points Per Game:	Cameasha Turner (15.0)
Rebounds Per Game:	Cameasha Turner (6.0)
Assists Per Game:	Lulu McKinney (3.2)
Steals Per Game:	Cameasha Turner (2.1)
Blocks Per Game:	Daeshianna McCants (0.8)

Bold denotes 2014-15 returnee

- The visitors relied on some hot three-point shooting to hang around early but once the Miners shored things up defensively UTPB had no answer. The Orange and Blue outscored UTPB, 65-17, over the final three quarters.

- The knockout blow was delivered through defense, with UTEP wrapping a 28-1 run around halftime. The effort turned a precarious three-point lead (21-18, 9:15 2Q) into a comfortable 30-point cushion (49-19, 4:14 3Q).

- The 54-point margin of victory is the fifth largest at UTEP while the 32 points allowed tie as the 10th fewest in program annals. The Miners had no such difficulties, connected on 52.5 percent (32-61) while outscoring UTPB 65-17 over the final three quarters.

- All 14 players earned at least nine minutes of playing time while 13 individuals scored in the game.
 - **Starr Breedlove** (13 points), **Jenzel Nash** (11 points), **Anete Kirsteine** (10 points) and **Sparkle Taylor** (10 points) all reached double figures in scoring. Breedlove also posted game highs for both assists (four) and steals (five). The five steals set a career high.
 - **Tamara Seda** and **Wiktorija Zapart** each grabbed six rebounds (career high) to share for team lead. Zapart also established career-highs in blocked shots (four), steals (two) and minutes played (15).

(UTEP 71, at NM State 65, 12/5/15)

- **Agata Dobrowolska** posted her first career double-double (15 points, 14 rebounds) to lead UTEP to an emotional 71-65 win at I-10 rival NM State on Dec. 5.
 - The Miners won the boards (43-38), forced 20 Aggie (6-2) turnovers and made clutch shots late to snap NM State's 17-game home winning streak.
 - Dobrowolska was joined in double digits for scoring by **Jenzel Nash** (16 points), **Cameasha Turner** (13 points) and **Starr Breedlove** (12 points). **Lulu McKinney** pitched in seven points, including a clutch three pointer with 47 seconds remaining to break the fourth and final tie of the tilt.
 - NM State, which trailed by as many as 14 points (18-4, 5:50 1Q) did well to battle back behind 11 three pointers. The Aggies managed to pull ahead, 62-61, with 1:59 to play but Breedlove used a teardrop shot to make the Miners' first second-half deficit of the season short lived.
 - Dobrowolska's previous career high for scoring was five (three times) while for boards it was eight. She also played 26 minutes to shatter prior career high (19).

(at UTEP 70, New Mexico 62, 12/2/15)

- **Lulu McKinney** poured in a career-high 22 points on her birthday to help keep the UTEP undefeated on the year following a 70-62 win against I-25 rival New Mexico on Dec. 2.
 - The Miners led wire-to-wire, with a game-opening 14-2 run putting the Lobos in a big hole.
 - UTEP hit 12-of-24 from three-point range (tied for sixth most all time at UTEP), with McKinney connecting on a ridiculous 6-of-8 (tied fourth all time at UTEP) from beyond-the-arc.
 - **Cameasha Turner** (16 points) and **Starr Breedlove** (11 points) joined McKinney in double figures.
 - UTEP made only seven turnovers (tied for sixth fewest in a game) and had 17 assists on 23 field goals.
 - **Daeshianna McCants** quietly filled up the stat sheet, recording five points, six boards, three blocks (tied career high) and three assists (career high) in 33 minutes (career high) while starting for first time in '15-16.

2015-16 UTEP NUMERICAL ROSTER

NUMERICAL ROSTER

No.	Name	Pos.	Ht.	Cl.-Exp.	Hometown (High School/Previous School)
1	Starr Breedlove	G	5-6	R-Sr.-TR	Teaneck, N.J. (Louisville)
2	Cameasha Turner	G	5-9	Sr.-3L	Dallas, Texas (Lincoln HS)
4	Lulu McKinney	G	5-7	So.-1L	Houston, Texas (Texas A&M Consolidated)
5	Shaylan Coleman	G	5-7	Fr.-HS	Richardson, Texas (Richardson HS)
10	Wiktorija Zapart	F	6-1	Fr.-HS	Lodz, Poland (III Liceum Ogolnokszalcace w Lodzi)
12	Sparkle Taylor	G	5-10	Jr.-2L	Flint, Mich. (Northwestern HS)
14	Najala Howell	G/F	5-10	Fr.-HS	DeSoto, Texas (DeSoto HS)
15	Agata Dobrowolska	F	6-3	Sr.-2L	Lublin, Poland (Casper College)
22	Jessica Barbosa^	F	6-1	Fr.-HS	Bissau, Guinea-Bissau (Windsor HS CA)
24	Jenzel Nash	G	5-7	R-Jr.-2L	Houston, Texas (Worthing HS)
25	Anete Kirsteine	G	5-11	Sr.-1L	Riga, Latvia (Seward Community College)
32	Chrishauna Parker	G	5-10	R-Sr.-3L	Houston, Texas (Atascocita HS)
33	Daeshianna McCants	F	6-1	So.-1L	Las Cruces, N.M. (Mayfield HS)
34	Lawna Kennedy	F	6-0	Sr.-1L	Fayetteville, Ga. (Atlanta Metropolitan College)
40	Rudiane Eduardo	F	6-1	Sr.-1L	Lyon, France (Northwest Florida State College)
42	Tamara Seda	F	6-4	Jr.-TR	Maputo, Mozambique (Seward Community College)

Head Coach: Keitha Adams
Associate Head Coach: Ewa Laskowska
Assistant Coaches: Bill Damuth and Kelli Willingham Bagley
Program Coordinator: Izabela Piekarska
Manager: Bizz Terry
Video Coordinator: Decker Smith

^Will redshirt 2015-16 season

PRONUNCIATION GUIDE

KEITHA Adams	Keith-uh
AGATA DOBROWOLSKA	Ah-got-uh Doh-bro-vul-skah
Bill DAMUTH	Day-muth
RUDIANE EDUARDO	Rudy-on Ed-ward-O
NAJALA Howell	Nah-jah-luh
ANETE KIRSTEINE	Ah-net Ker-steine-uh
EWA LASKOWSKA	A-vuh Less-cow-skuh
DAESHIANNA McCants	Day-she-on-ah
TAMARA SEDA	Tuh-mair-uh Say-duh
WIKTORIA Zapart	Victoria

(at UTEP 67, Idaho State 54)

- Junior **Jenzel Nash** poured in a career-high 26 points to help propel UTEP past Idaho State, 67-54, in the championship game of the Fifth-Annual UTEP Thanksgiving Classic on Nov. 28.
- The Miners nailed 11 three pointers (tied eighth all time), including four by Nash-who was named the tournament's MVP- while also harassing the Bengals into 22 turnovers.
- UTEP committed a season-low nine turnovers and held a 17-8 advantage in points off giveaways.
- **Cameasha Turner** (12 points) and **Starr Breedlove** (11 points) joined Nash in double figures for scoring while **Lulu McKinney** came off the bench to tally seven points.
- Nash was 8-of-15 from the floor, including 4-of-6 from three-point range, while making all six free throws. She also grabbed seven rebounds, recorded five steals and dished out four assists in 29 minutes.
- Breedlove was named to the All-Tournament team, along with Nash.

(at UTEP 68, UCR 57, 11/27/15)

- UTEP flexed its defensive muscle while also showing off its depth in a 68-57 victory against visiting UC Riverside in its opening game of the Fifth-Annual Thanksgiving Classic on Nov. 27.
- The Miners forced 22 turnovers, won the boards (46-33) and held the Highlanders to 34.5 percent.
- UTEP overcame a sluggish start to finish at 40.0 percent (26-of-65) from the floor.
- It featured a balanced attack, with six different players scoring at least nine points. **Cameasha Turner** led the way with 11 followed by 10 points from **Starr Breedlove**. **Daeshianna McCants**, **Chrisauna Parker** and **Sparkle Taylor** tallied nine points while **Jenzel Nash** pitched in eight.
- Breedlove also recorded a career-high six assists while **Tamara Seda** set a career high in boards (five).
- Points in the paint (40-20), points off turnovers (23-14) and second-chance points (15-4) all favored UTEP.

(at UTEP 78, Hampton 66, 11/22/15)

- UTEP used a huge second half to cruise past Hampton, 78-54, on Nov. 22. The Miners outscored the Lady Pirates 52-30 after the break with **Jenzel Nash** and **Starr Breedlove** leading the charge.
- Nash scored 21 of her game-high 23 points (two short of career high) in the second half while Breedlove followed suit by tallying 20 of her personal-best 22 points in the timeframe.
- **Chrisauna Parker** overcame early foul issues to add eight points, six of which were in the second half. **Daeshianna McCants**, **Lulu McKinney** and **Cameasha Turner** each pitched in five points.
- The Miners shot 48.2 percent (27-of-56) from the floor, aided significantly by a sizzling 64.1 percent (18-of-28) during the sensational second half. Hampton was limited to 31.1 percent (19-of-61).
- UTEP's 2-2-1 press gave Hampton fits, which committed 22 turnovers that led to 25 Miner points.

(at UTEP 77, Northern Arizona 66, 11/17/15)

- UTEP forced 22 turnovers while also taking care of business at the free-throw line to hold off upset-minded Northern Arizona, 77-66, on Nov. 17.
- UTEP relied on a balanced attack with four different players (**Sparkle Taylor**-15 points, **Jenzel Nash**-15 points, Starr Breedlove-13 points and Cameasha Turner-12 points) reaching double figures in scoring while junior Tamara Seda pitched in eight. The Miners overcame a slow shooting start to finish at 38.8 percent (26-of-67) from the floor, including 46.7 percent (14-of-30) over the final 20 minutes.
- Visiting NAU also had a balanced approach on offense with five players tallying 10 or more points.
- The Lumberjacks actually finished with a better overall shooting percentage than the Miners, nailing 41.7 percent (25-of-60) from the floor but they were doomed due to difficulties at the line. NAU was a paltry 47.8 percent (11-of-23) from the free-throw line, compared to UTEP's solid effort of 70.0 percent (21-of-30).
- The Miners' press also played a factor, converting the aforementioned 22 turnovers into 16 points. Second-chance points (18-8), points in the paint (42-30) and bench points (28-19) all favored UTEP as well.

(at UTEP 98, Houston Baptist 63, 11/15/15)

- UTEP bolted out to a 28-4 lead over the first seven minutes of the game and never looked back on the way to routing Houston Baptist, 98-63, in its season opener on Nov. 15.
- The 98 points are the most ever in a campaign lidlifter while ranking ninth all time at the school
- UTEP held HBU to 32.7 percent (17-of-52) from the floor.
- HBU committed 33 turnovers (which were converted into 33 points) and rank tied for the eighth most in a tilt by an opposing team.
- UTEP won the boards, 36-34, with seven different players grabbing three or more.
- The Miners drained 54.7 percent (35-of-64) of their shots, with good ball movement (17 assists) and unselfish play helping fuel the success
- **Cameasha Turner** poured in 20 points to pace a relentless, balanced attack which by game's end resulted in 14 of the 15 players suited up scoring at least one point. Juniors **Sparkle Taylor** came off the bench to score 15 points while fellow classmate **Jenzel Nash** (11 points) made a successful return to the court (redshirted last year) by joining them in double figures.
- The reserves provided 56 points, which is the most by a UTEP bench since a 68-point effort against UT-Permian Basin in a 107-43 victory on Dec. 16, 2006.
- UTEP moved to 23-19 all time in season openers, including 20-6 in El Paso
- The Miners are now 10-5 in campaign lidlifters under head coach **Keitha Adams**, including 9-2 when starting the year at home. UTEP stands 28-13 in home openers, including 12-3 under Adams.



2015-16 GAME-BY-GAME

Opponent	Date	W/L	Pts	FG-FGA	Pct	3FG-FGA	Pct	FT-FTA	Pct	Off	Def	Tot	Avg	PF	A	TO	Blk	Stl	Pts	Avg
@UTEP	11/15/15	W	98	35-64	.547	3-14	.214	25-35	.714	10	26	36	36.0	25	17	21	7	19	98	98.0
HBU			63	17-52	.327	5-14	.357	24-33	.727	11	23	34	34.0	30	7	33	4	8	63	63.0
@UTEP	11/17/15	W	77	26-67	.388	4-15	.267	21-30	.700	16	27	43	39.5	21	12	15	1	15	77	87.5
Northern Arizona			66	25-60	.417	5-16	.313	11-23	.478	13	31	44	39.0	26	10	22	0	6	66	64.5
@UTEP	11/22/15	W	78	27-56	.482	5-13	.385	19-25	.760	12	31	43	40.7	23	11	23	9	8	78	84.3
Hampton			54	19-61	.311	4-13	.308	12-21	.571	16	19	35	37.7	23	8	22	3	8	54	61.0
@UTEP	11/27/15		68	26-65	.400	3-21	.143	13-17	.765	17	29	46	42.0	20	12	20	2	12	68	80.2
UC Riverside			57	19-55	.345	5-17	.294	14-19	.737	9	24	33	36.5	15	13	22	3	12	57	60.0
@UTEP	11/28/15	W	67	22-58	.379	11-32	.344	12-17	.706	7	22	29	39.4	13	13	9	4	14	67	77.6
Idaho State			54	23-53	.434	3-11	.273	5-8	.625	10	29	39	37.0	16	8	22	0	4	54	58.8
@UTEP	12/02/15	W	70	23-55	.418	12-24	.500	12-16	.750	10	20	30	37.8	15	17	7	4	6	70	76.3
New Mexico			62	23-55	.418	5-19	.263	11-14	.786	13	24	37	37.0	14	13	11	1	4	62	59.3
UTEP	12/05/15	W	71	29-68	.426	3-19	.158	10-16	.625	18	25	43	38.6	18	12	15	5	10	71	75.6
@NM State			65	22-57	.386	11-26	.423	10-20	.500	14	24	38	37.1	16	13	20	5	7	65	60.1
@UTEP	12/14/15	W	86	32-61	.525	4-13	.308	18-28	.643	13	33	46	39.5	22	16	16	7	19	86	76.9
UTPB			32	8-48	.167	6-25	.240	10-18	.556	10	21	31	36.4	23	5	31	0	6	32	56.6
@UTEP	12/18/15		40	15-48	.313	2-14	.143	8-21	.381	12	29	41	39.7	21	3	26	6	15	40	72.8
at Long Beach State			47	18-61	.295	6-25	.240	5-12	.417	18	27	45	37.3	21	12	24	2	9	47	55.6
UTEP	12/19/15		60	23-58	.397	4-11	.364	10-15	.667	14	32	46	40.3	23	14	22	4	7	60	71.5
vs UNLV			52	19-60	.317	1-12	.083	13-28	.464	19	22	41	37.7	18	8	21	7	6	52	55.2
UTEP	1/1/16		60	21-60	.350	7-21	.333	11-15	.733	19	25	44	40.6	21	11	17	3	10	60	70.5
at Rice			54	17-52	.327	5-16	.313	15-19	.789	12	23	35	37.5	15	10	17	1	9	54	55.1
UTEP			775	279-660	.423	58-197	.294	159-235	.677	148	299	447	40.6	222	138	191	52	135	775	70.5
Opponents			606	210-614	.342	56-194	.289	130-215	.605	145	267	412	37.5	217	107	245	26	79	606	55.1

2015-16 INDIVIDUAL POINTS-REBOUND-ASSISTS

Opponent	Breedlove	Turner	McKinney	Coleman	Zapart	Taylor	Howell	Dobrowolska	Nash	Kirsteine	Parker	McCants	Kennedy	Eduardo	Seda
HBU	5-3-5	20-2-2	9-4-3	1-1-1	2-3-0	15-3-0	6-4-0	2-0-0	11-2-2	0-1-0	2-2-2	7-6-1	4-1-0	8-0-1	6-0-0
NAU	13-5-5	12-5-2	1-1-2	DNP	0-2-0	15-3-0	2-3-1	2-2-0	15-9-1	0-0-0	4-5-0	0-0-0	5-1-1	0-1-0	8-4-0
Hampton	22-2-2	5-4-1	5-1-2	2-0-1	0-3-0	4-2-1	0-4-0	2-2-1	23-8-2	0-0-0	8-6-1	5-6-0	DNP	0-0-0	2-1-0
UC Riverside	10-4-6	11-2-2	DNP	0-1-0	DNP	9-4-0	2-1-0	0-2-0	8-7-3	DNP	9-6-0	9-5-0	2-3-0	4-3-0	4-5-1
Idaho State	11-1-1	12-6-4	7-0-1	DNP	0-1-0	4-3-0	0-0-0	0-1-0	26-7-4	3-2-1	DNP	2-2-0	2-2-0	DNP	0-0-2
UNM	11-2-6	16-4-0	22-2-2	DNP	0-0-0	DNP	0-4-1	2-0-0	3-3-4	DNP	DNP	5-6-3	4-3-0	0-0-0	7-4-1
@NM State	12-2-8	13-6-0	7-2-1	0-1-0	DNP	DNP	2-1-0	15-14-0	16-6-3	0-0-0	DNP	3-5-0	0-2-0	2-1-0	1-3-0
UTPB	13-0-4	8-2-1	9-4-3	0-3-2	1-6-0	10-2-0	1-2-0	2-1-0	11-6-2	10-1-1	DNP	5-6-0	4-1-1	6-1-2	6-6-0
LBSU	2-1-1	5-3-0	1-2-0	0-3-0	0-1-0	7-3-0	5-2-1	3-5-0	13-3-0	DNP	DNP	0-1-0	2-6-1	0-3-0	2-1-0
vs UNLV	1-4-3	5-8-2	12-1-3	0-0-0	DNP	19-6-1	5-5-0	0-3-1	7-7-3	DNP	DNP	3-1-0	0-0-0	0-0-0	8-3-1
at Rice	15-3-3	5-6-2	5-4-3	DNP	0-2-0	10-1-0	0-0-0	2-7-2	12-5-1	3-1-0	DNP	0-1-0	6-3-0	DNP	2-5-0



UTEP INDIVIDUAL CAREER HIGHS

JESSICA BARBOSA (WILL REDSHIRT 15'16 SEASON)

PTS:.....0
REB:.....0
Off REB:.....0
Def REB:.....0
AST:.....0
STL:.....0
BLK:.....0
FG:.....0
FGA:.....0
3FG:.....0
3FGA:.....0
FT:.....0
FTA:.....0
MIN:.....0

1 STARR BREEDLOVE

PTS:.....22, Hampton-11/22/15
REB:.....5, Northern Arizona-11/17/15
Off REB:.....2, at Rice-1/1/16
Def REB:.....5, Northern Arizona-11/17/15
AST:.....8, at NM State-12/5/15
STL:.....5, twice (most recent at Rice-1/1/16)
BLK:.....0
FG:.....7, Hampton-11/22/15
FGA:.....14, at Rice-1/1/16
3FG:.....3, twice (most recent New Mexico-12/2/15)
3FGA:.....6, Idaho State-11/28/15
FT:.....5, Hampton-11/22/15
FTA:.....6, twice (most recent Hampton-11/22/15)
MIN:.....36, Idaho State-11/28/15

5 SHAYLAN COLEMAN

PTS:.....2, Hampton-11/22/15
REB:.....3, twice (most recent at LBSU-12/18/15)
Off REB:.....2, at LBSU-12/18/15
Def REB:.....2, UTPB-12/14/15
AST:.....2, UTPB-12/14/15
STL:.....2, Houston Baptist-11/15/15
BLK:.....0
FG:.....1, Hampton-11/22/15
FGA:.....3, Houston Baptist-11/15/15
3FG:.....0
3FGA:.....2, Houston Baptist-11/15/15
FT:.....1, Houston Baptist-11/15/15
FTA:.....2, twice (most recent UTPB-12/14/15)
MIN:.....15, UCR-11/27/15

#15 AGATA DOBROWOLSKA

PTS:.....15, at NM State-12/5/15
REB:.....14, at NM State-12/5/15
Off REB:.....5, at NM State-12/5/15
Def REB:.....9, at NM State-12/5/15
AST:.....3, at Charlotte-2/12/15
STL:.....2, twice (most recent at ODU-2/14/15)
BLK:.....3, vs. UNLV (12/19/15)
FG:.....7, at NM State-12/5/15
FGA:.....8, at NM State-12/5/15
3FG:.....1, six times (most recent at NM State-12/5/15)
3FGA:.....2, four times (most recent at NM State 2/5/15)
FT:.....2, Houston Baptist-11/15/15
FTA:.....4, Houston Baptist-11/15/15
MIN:.....26, at NM State-12/5/15

#40 RUDIANE EDUARDO

PTS:.....9, four times (most recent at Rice-3/7/15)
REB:.....7, Eastern New Mexico-12/2/14
Off REB:.....3, North Texas-1/2/15
Def REB:.....5, Eastern New Mexico-12/2/14
AST:.....4, vs. Kansas State-11/25/14
STL:.....3, twice (most recent UTPB-12/14/15)
BLK:.....1, eight times (most recent at LBSU-12/18/15)
FG:.....4, three times (most recent Houston Baptist-11/15/15)
FGA:.....9, Houston Baptist-11/15/15
3FG:.....1, seven times (most recent at Rice-3/7/15)
3FGA:.....4, at SMU-11/16/14
FT:.....3, Northern Arizona-11/19/14
FTA:.....5, at Rice-3/7/15
MIN:.....26, at UAB-1/29/15

#14 NAJALA HOWELL

PTS:.....6, Houston Baptist-11/15/15
REB:.....5, vs. UNLV-12/19/15
Off REB:.....1, five times (most recent UNLV-12/19/15)
Def REB:.....4, twice (most recent UNLV-12/19/15)
AST:.....1, three times (most recent at LBSU-12/18/15)
STL:.....1, twice (most recent at LBSU-12/18/15)
BLK:.....0
FG:.....2, twice (most recent at LBSU-12/18/15)
FGA:.....3, four times (most recent at LBSU-12/18/15)
3FG:.....1, at LBSU-12/18/15
3FGA:.....2, three times (most recent at LBSU-12/18/15)
FT:.....3, vs UNLV-12/18/15
FTA:.....4, vs. UNLV-12/18/15
MIN:.....19, vs. UNLV-12/18/15

#34 LAWNA KENNEDY

PTS:.....12, PVAMU-12/20/14
REB:.....13, at North Texas-3/5/15
Off REB:.....8, at North Texas-3/5/15
Def REB:.....6, vs. Kansas State-11/25/14
AST:.....2, at LA Tech-1/8/15
STL:.....3, at UAB-3/11/15
BLK:.....3, twice (most recent at LA Tech-1/8/15)
FG:.....6, Prairie View A&M-12/20/14
FGA:.....8, three times (most recent at North Texas-3/5/15)
3FG:.....0
3FGA:.....1, vs. Kansas State-11/25/14
FT:.....6-LA Tech-2/27/15
FTA:.....8-LA Tech-2/27/15
MIN:.....30, at North Texas-3/5/15

#25 ANETE KIRSTEINE

PTS:.....15, twice (most recent #24 WKU-1/22/15)
REB:.....6, at UAB-1/29/15
Off REB:.....1, eight times (most recent Houston Baptist-11/15/15)
Def REB:.....5, at UAB-1/29/15
AST:.....3, twice (most recent PVAMU-12/20/14)
STL:.....2, three times (most recent at UAB-3/11/15)
BLK:.....1, four times (most recent Houston Baptist 11/15/15)
FG:.....5, twice (most recent #24 WKU-1/22/15)
FGA:.....9, Northern Arizona-11/22/13
3FG:.....5, twice (most recent #24 WKU-1/22/15)
3FGA:.....9, twice (most recent #24 WKU-1/22/15)
FT:.....3, at New Mexico-12/14/14
FTA:.....5, at New Mexico-12/14/14
MIN:.....23, at UAB-3/11/15

#33 DAESHIANNA MCCANTS

PTS:.....13, at MTSU-1/31/15
REB:.....9, twice (most recent FAU-2/5/15)
Off REB:.....6, Northern Arizona-11/19/14
Def REB:.....6, twice (most recent Hampton-11/22/15)
AST:.....3, New Mexico-12/2/15
STL:.....4, FIU-2/7/15
BLK:.....3, four times (most recent New Mexico-12/2/15)
FG:.....5, twice (most recent at MTSU-1/31/15)
FGA:.....12, at MTSU-1/31/15
3FG:.....1, three times (most recent, UCR-11/27/15)
3FGA:.....2, at ODU-2/14/15
FT:.....4, three times (most recent Marshall-1/24/15)
FTA:.....7, Houston Baptist-11/15/15
MIN:.....33, New Mexico-12/2/15

4 LULU MCKINNEY

PTS:.....22, New Mexico-12/2/15
REB:.....5, twice (most recent 30, at North Texas-3/5/15)
Off REB:.....2, twice (most recent at NM State-12/5/15)
Def REB:.....5-LA Tech-2/27/15
AST:.....7, twice (most recent Alcorn State-12/28/14)
STL:.....4, at North Texas-3/5/15
BLK:.....2, at ODU-2/14/15
FG:.....6, three times (most recent New Mexico-12/2/15)
FGA:.....15, HBU-12/6/14
3FG:.....6, New Mexico-12/2/15
3FGA:.....10, at North Texas-3/5/15
FT:.....7-LA Tech-2/27/15
FTA:.....8-LA Tech-2/27/15
MIN:.....35, Houston Baptist-12/6/14

#24 JENZEL NASH

PTS:.....26, Idaho State-11/28/15
REB:.....9, Northern Arizona-11/17/15
Off REB:.....6, Northern Arizona-11/17/15
Def REB:.....6, twice (most recent at North Texas-2/19/14)
AST:.....5, twice (most recent at North Texas-2/19/14)
STL:.....7, at Tulane-1/15/12
BLK:.....1, seven times (most recent at Middle Tennessee-1/15/14)
FG:.....11, Tulsa-1/11/14
FGA:.....21, Southern Miss-1/22/14
3FG:.....4, Idaho State-11/28/15
3FGA:.....7, East Carolina-2/22/14
FT:.....9, twice (most recent UTPB-12/14/15)
FTA:.....11, at Tulane-1/15/12
MIN:.....34, Southern Miss-1/22/14

#32 CHRISHAUNA PARKER

PTS:.....21, Southern Miss-1/22/14
REB:.....18, UAB-3/14/13
Off REB:.....9, Southern Miss-1/22/14
Def REB:.....12, SMU-12/7/13
AST:.....7, three times (most recent at Houston 1/27/13)
STL:.....7, Kansas State-11/16/13
BLK:.....1, 19 times (most recent Rutgers-4/2/14)
FG:.....8, at NM State-12/3/13
FGA:.....14, Southern Miss-1/22/14
3FG:.....1, nine times (most recent Southern Miss-3/14/13)
3FGA:.....3, Sam Houston State-12/28/12
FT:.....10, SMU-12/7/13
FTA:.....12, three times (most recent UAB-3/14/13)
MIN:.....38, Charlotte-1/18/14

#42 TAMARA SEDA

PTS:.....8, twice (most recent vs. UNLV-12/19/15)
REB:.....6, UTPB-12/14/15
Off REB:.....3, twice (most recent vs. UNLV-12/19/15)
Def REB:.....5, UCR-11/27/15
AST:.....2, Idaho State-11/28/15
STL:.....2, twice (most recent, Idaho State-12/28/15)
BLK:.....1, twice (most recent at Rice-1/1/16)
FG:.....4, Northern Arizona-11/17/15
FGA:.....9, twice (most recent UTPB-12/14/15)
3FG:.....0
3FGA:.....0
FT:.....3, New Mexico-12/2/15
FTA:.....4, twice (most recent vs. UNLV-12/19/15)
MIN:.....21, vs. UNLV-12/19/15

#12 SPARKLE TAYLOR

PTS:.....25, Eastern New Mexico-12/2/14
REB:.....10, twice (most recent at MTSU-1/31/15)
Off REB:.....7, at MTSU-1/31/15
Def REB:.....7, Eastern New Mexico-12/2/14
AST:.....4, Eastern New Mexico-12/2/14
STL:.....3, twice (most recent at UAB-12/29/15)
BLK:.....3, vs. Kansas State-11/25/14
FG:.....10, Eastern New Mexico-12/2/14
FGA:.....20, at MTSU-1/31/15
3FG:.....4, at UAB-3/11/15
3FGA:.....5, at UAB-3/11/15
FT:.....6, five times (most recent LA Tech-2/27/15)
FTA:.....12, UTPB-11/8/13
MIN:.....29, at UAB-3/11/15

#2 CAMEASHA TURNER

PTS:.....27, NM State-11/14/14
REB:.....13, Southern Miss-3/1/15
Off REB:.....3, three times (most recent at LA Tech-1/8/15)
Def REB:.....11, twice (most recent Southern Miss-3/1/15)
AST:.....6, Southern Miss-3/1/15
STL:.....6, Houston Baptist-11/15/15
BLK:.....2, twice (most recent at NM State-12/5/15)
FG:.....10, FIU-2/7/15
FGA:.....20, twice (most recent at Charlotte-2/12/15)
3FG:.....3, five times (most recent at North Texas-3/5/15)
3FGA:.....8, at SMU-11/16/14
FT:.....10, Marshall-1-25-14
FTA:.....11, twice (most recent 2, at UTSA-2/21/15)
MIN:.....39, at UTSA-2/21/15

WIKTORIA ZAPART

PTS:.....2, Houston Baptist-11/15/15
REB:.....6, UTPB-12/14/15
Off REB:.....2, twice (most recent at Rice-1/1/16)
Def REB:.....5, UTPB-12/14/15
AST:.....0
STL:.....2, UTPB-12/14/15
BLK:.....4, UTPB-12/14/15
FG:.....1, Houston Baptist-11/15/15
FGA:.....3, twice (most recent UTPB-12/14/15)
3FG:.....0
3FGA:.....0
FT:.....1, UTPB-12/14/15
FTA:.....2, UTPB-12/14/15
MIN:.....15, UTPB-12/14/15



UTEP SINGLE-GAME RECORDS

FIELD GOALS MADE

Table with 3 columns: FG, OPP, DATE. Lists field goals made in various games.

FIELD GOALS ATTEMPTED

Table with 3 columns: FGA, OPP, DATE. Lists field goals attempted in various games.

FIELD GOAL PERCENTAGE (MINIMUM 24 MADE)

Table with 3 columns: FG%, OPP, DATE. Lists field goal percentages for various games.

FIELD GOAL PERCENTAGE DEFENSE

Table with 3 columns: FG% Defense, OPP, DATE. Lists field goal percentages against opponents.

THREE POINTERS MADE

Table with 3 columns: 3PM, OPP, DATE. Lists three pointers made in various games.

THREE POINTERS ATTEMPTED

Table with 3 columns: 3PA, OPP, DATE. Lists three pointers attempted in various games.

THREE POINT PERCENTAGE (MINIMUM 8 MADE)

Table with 3 columns: 3FG%, OPP, DATE. Lists three point percentages for various games.

FREE THROWS MADE

Table with 3 columns: FTM, OPP, DATE. Lists free throws made in various games.

FREE THROWS ATTEMPTED

Table with 3 columns: FTA, OPP, DATE. Lists free throws attempted in various games.

FREE THROW PERCENTAGE (MIN. 10 MADE)

Table with 3 columns: FT%, OPP, DATE. Lists free throw percentages for various games.

OFFENSIVE REBOUNDS

Table with 3 columns: ORB, OPP, DATE. Lists offensive rebounds in various games.

TOTAL REBOUNDS

Table with 3 columns: RB, OPP, DATE. Lists total rebounds in various games.

PERSONAL FOULS

Table with 3 columns: PF, OPP, DATE. Lists personal fouls in various games.

ASSISTS

Table with 3 columns: AST, OPP, DATE. Lists assists in various games.

FEWEST TURNOVERS COMMITTED

Table with 3 columns: TO, OPP, DATE. Lists fewest turnovers committed in various games.

MOST TURNOVERS COMMITTED

Table with 3 columns: TO, OPP, DATE. Lists most turnovers committed in various games.

MOST TURNOVERS FORCED

Table with 3 columns: TO, OPP, DATE. Lists most turnovers forced in various games.

Other games of at least 30

Table with 3 columns: TO, OPP, DATE. Lists other games of at least 30.

BLOCKS

Table with 3 columns: BLK, OPP, DATE. Lists blocks in various games.

STEALS

Table with 3 columns: STL, OPP, DATE. Lists steals in various games.



UTEP SINGLE-GAME RECORDS CONTINUED

MOST POINTS SCORED (GAME)

Table with 3 columns: PTS OPP, DATE. Lists top scorers like Colorado State* (2/9/80) and UT-Permian Basin+ (12/15/06).

All other games scored more than 90 points

Table with 3 columns: PTS OPP, DATE. Lists scorers for games with over 90 points, such as NM State (11/12/13) and Texas State (12/17/10).

FEWEST POINTS SCORED (GAME)

Table with 3 columns: PTS OPP, DATE. Lists lowest scorers like at Tulsa* (1/27/00) and at Rice* (2/1/07).

MOST POINTS ALLOWED (GAME)

Table with 3 columns: PTS OPP, DATE. Lists highest scorers against UTEP like at Texas (11/17/78) and at San Diego State (1/4/84).

All other allowed 100+ points in game

Table with 3 columns: PTS OPP, DATE. Lists scorers for games with 100+ points allowed, such as vs. Georgia Tech (12/20/13) and at Houston (11/27/01).

FEWEST POINTS ALLOWED (GAME)

Table with 3 columns: PTS OPP, DATE. Lists lowest scorers by UTEP like Fort Bliss+ (11/10/77) and Beaumont+ (1/15/75).

All other games fewer than 40 points allowed

Table with 3 columns: PTS OPP, DATE. Lists lowest scorers by UTEP in games with fewer than 40 points, such as UTPA (12/22/96) and Tulsa* (1/31/13).

MOST POINTS SCORED (HALF)

Table with 4 columns: PTS OPP, HALF, DATE. Lists top scorers in halves, such as Colorado State* (2nd, 2/9/80) and at Tulane* (2nd, 2/1/14).

MOST POINTS SCORED (FIRST HALF)

Table with 4 columns: PTS OPP, DATE. Lists top scorers in the first half, such as UTPB+ (12/15/06) and Southern Miss* (2/21/09).

MOST POINTS SCORED (SECOND HALF)

Table with 4 columns: PTS OPP, DATE. Lists top scorers in the second half, such as Colorado State* (2/9/80) and at Tulane* (2/1/14).

FEWEST POINTS SCORED (HALF)

Table with 4 columns: PTS OPP, HALF, DATE. Lists lowest scorers in halves, such as at Rice* (1st, 2/1/07) and at New Mexico* (1st, 2/20/97).

FEWEST POINTS SCORED (FIRST HALF)

Table with 4 columns: PTS OPP, DATE. Lists lowest scorers in the first half, such as at Rice* (2/1/07) and at New Mexico* (2/20/97).

FEWEST POINTS SCORED (SECOND HALF)

Table with 4 columns: PTS OPP, DATE. Lists lowest scorers in the second half, such as at Texas State (2/19/90) and Texas State (12/13/89).

MOST POINTS SCORED (QUARTER)

Table with 4 columns: PTS OPP, QTR, DATE. Lists top scorers in quarters, such as Houston Baptist (1, 11/15/15) and Houston Baptist (3, 11/15/15).

FEWEST POINTS SCORED (QUARTER)

Table with 4 columns: PTS OPP, QTR, DATE. Lists lowest scorers in quarters, such as at Long Beach State (1, 12/18/15) and at Long Beach State (2, 12/18/15).

MOST POINTS ALLOWED (QUARTER)

Table with 4 columns: PTS OPP, QTR, DATE. Lists highest scorers against UTEP in quarters, such as vs. UNLV (4, 12/19/15) and at NM State (1, 12/5/15).

FEWEST POINTS ALLOWED (QUARTER)

Table with 4 columns: PTS OPP, QTR, DATE. Lists lowest scorers by UTEP in quarters, such as UTPB+ (2, 12/14/15) and UTPB+ (4, 12/14/15).

LARGEST LEAD AT HALFTIME

Table with 3 columns: PTS OPP, DATE. Lists largest leads at halftime, such as UTPB (12/16/06) and Eastern New Mexico+ (12/1/08).

All other games led by at least 23

Table with 3 columns: PTS OPP, DATE. Lists largest leads at halftime for games with at least 23 point leads, such as Southern Miss* (2/21/09) and MSVU (12/14/08).

LARGEST DEFICIT AT HALFTIME

Table with 3 columns: PTS OPP, DATE. Lists largest deficits at halftime, such as at Rice* (2/1/07) and vs. Penn State (11/19/83).

LARGEST MARGIN OF VICTORY

Table with 3 columns: PTS OPP, DATE. Lists largest margins of victory, such as Ft. Bliss+ (11/10/77) and at Ft. Bliss+ (11/28/77).

All other wins by 35+ points

Table with 3 columns: PTS OPP, DATE. Lists largest margins of victory for games with 35+ point margins, such as Houston* (1/23/12) and Juarez+ (12/5/81).

LARGEST MARGIN OF DEFEAT

Table with 3 columns: PTS OPP, DATE. Lists largest margins of defeat, such as at Texas (11/17/78) and at Colorado* (2/10/79).

MOST COMBINED POINTS IN A GAME

Table with 3 columns: PTS OPP, DATE. Lists most combined points in a game, such as Colorado State* (Win) (2/9/80) and vs. Texas Lutheran+ (Win) (12/4/82).

FEWEST COMBINED POINTS IN A GAME

Table with 3 columns: PTS OPP, DATE. Lists fewest combined points in a game, such as at Beaumont+ (W, 58-20) (1/13/75) and Beaumont+ (W, 58-20) (12/13/74).

BOLD Denotes Keitha Adams era

* denotes conference contest

+ denotes Non-Division I opponent



UTEP INDIVIDUAL SINGLE-GAME RECORDS

POINTS
PTS NAME OPP DATE
1. 40 Holly Russ UT-San Antonio 2/19/91
2. 37 Holly Russ Baylor 12/17/91
3. 36 Kayla Thornton vs. Belmont 12/21/93
4. 35 Kiana Taylor South Carolina 11/28/97
35 Holly Russ San Diego State 1/19/91
6. 34 Amy Pack Sul Ross State 12/30/00
34 Lenore Dembs Hardin-Simmons 2/16/85
34 Be Stoney BYU 2/30/80
9. 33 Jareica Hughes Rice 3/7/08
33 Amy Pack San Jose State 2/5/00
33 Holly Russ Wichita State 12/1/90

OTHER 30+ point games
32 Kayla Thornton at Memphis 2/24/13
31 Gloria Estrada NMSU 1/29/77
30 Donna Stoney Henderson 11/21/81

FIELD GOALS MADE
FGM NAME OPP DATE
1. 16 Lenore Dembs Hardin-Simmons 2/16/85
2. 14 Heidi Walker PVAMU 11/21/99
14 Kiana Taylor South Carolina 11/28/97
14 Holly Russ UT-San Antonio 2/19/91
14 Holly Russ San Diego State 1/19/91
14 Kris Hudson Texas Lutheran 12/4/82
14 Donna Stoney Henderson State 11/21/81
14 Gloria Estrada NMSU 1/29/77
9. 13 Kayla Thornton vs. Belmont 12/17/93
13 Lisa Watson AK-Anchorage 2/26/89
13 Traci Miller Arkansas State 12/6/86
13 Carolyn Prince at TXAM Kingsville 12/5/80

FIELD GOALS ATTEMPTED
FGA NAME OPP DATE
1. 31 Holly Russ UT-San Antonio 2/19/91
2. 30 Holly Russ Creighton 2/21/91
3. 29 Holly Russ Creighton 1/26/91
4. 28 Holly Russ Utah 2/20/92
28 Holly Russ Weber State 11/30/91
28 Traci Miller Arkansas State 12/6/86
28 Lenore Dembs Hardin-Simmons 2/16/85
8. 27 Holly Russ San Diego State 2/16/91
27 Holly Russ San Diego State 1/19/91
27 Holly Russ Wichita State 12/1/90

FIELD GOAL PERCENTAGE (MINIMUM 7 MADE)
FG% NAME OPP DATE
1. 100 Ana Valtierra Fresno State 1/11/03
100 Kiana Taylor New Mexico 1/24/98
100 Kevia Ford Wyoming 2/25/95
100 Kevia Ford Texas Southern 1/18/94
100 Michelle Roper Wyoming 3/6/93
100 Donetta Yellets UT-San Antonio 2/5/87
7. 93.3 Donna Stoney Henderson state 11/21/81
8. 90.0 Jareica Hughes Tulane 1/12/08
90.0 Janet Brunson NMSU 1/13/84
10. 88.9 Heidi Walker UL-Lafayette 11/19/00
88.9 Kiana Taylor UCF 12/18/97
88.9 T.D. Foster Southeast Louisiana 2/24/90

THREE-POINTERS MADE
3PM NAME OPP DATE
1. 7 Dietra Caldwell Toledo 11/24/09
7 Sviatlana Trukshanina Tulsa 1/22/09
7 Holly Russ UT-San Antonio 2/19/91
4. 6 Lulu McKinney New Mexico 12/2/15
6 Kelli Willingham at UAB 1/8/14
6 Kayla Thornton at Memphis 2/24/13
6 Sviatlana Trukshanina TX Southern 12/13/09
6 Jareica Hughes Toledo 11/24/09
6 Dietra Caldwell UCF 2/19/09
6 Dietra Caldwell SSVU 11/22/08
6 Romie DeAnda San Jose State 3/6/03
6 Kia Dowell at Kansas 11/24/02
6 Kimya Murray SMU 3/5/02
6 Amy Billhymmer Tulsa 1/17/97
6 Jill Lewis NMSU 12/16/93
6 Laura Walker NMSU 12/21/92

THREE-POINTERS ATTEMPTED
3PA NAME OPP DATE
1. 16 Amy Billhymmer Illinois-Chicago 12/19/96
2. 15 Laura Walker NMSU 12/21/92
3. 14 Kimya Murray SMU 3/5/02
4. 13 Kayla Thornton at Memphis 2/24/13
13 Amy Billhymmer TCU 1/12/97
13 Amy Billhymmer BYU 1/29/94
13 Holly Russ UT-San Antonio 2/19/91
13 Holly Russ San Diego State 2/16/91
13 Terri Powell U.S. International 2/14/88

THREE-POINT PERCENTAGE (MINIMUM 4 MADE)
3FG% NAME OPP DATE
1. 100.0 Timika Williams vs. Missouri State 12/4/09
100.0 Briana Green at Tulane 1/18/09
100.0 Shalana Taylor ULL 12/10/06
100.0 Ana Valtierra SMU 1/8/06
100.0 Laura Walker Baylor 12/2/92
6. 85.7 Sviatlana Trukshanina Texas Southern 12/13/09
7. 83.3 Jareica Hughes Tulane 1/12/08
83.3 Ana Valtierra Nevada 2/14/04
83.3 Terri Powell San Diego State 12/29/87

FREE THROWS MADE
FTM NAME OPP DATE
1. 17 Gloria Brown at Southern Miss 1/26/12
2. 14 Amy Pack San Jose State 1/2/01
14 Holly Russ UT-Pan American 1/21/91
14 Sonya Howell Southeast La. 2/24/90
5. 13 Kayla Thornton East Carolina 2/22/14
13 Amy Pack Tulsa 1/21/01
13 Amy Pack Nevada 1/5/01
8. 12 Gloria Brown East Carolina 1/6/11
12 Noni Wharemate San Jose State 3/6/03
12 Amy Pack at UTSA 11/24/00
12 Shani Dinwiddie Rice 2/15/97
12 Kanequa Chancellor NMSU 11/26/96
12 Kiana Taylor BYU 1/29/94
12 Shenita Waddell Wyoming 3/10/93
12 Holly Russ Baylor 12/17/91
12 Traci Miller Oregon State 12/21/86
12 Dawn Coy Oregon State 12/21/86

FREE THROWS ATTEMPTED
FTA NAME OPP DATE
1. 19 Gloria Brown at Southern Miss 1/26/12
19 Amy Pack San Jose State 1/2/01
19 Kiana Taylor BYU 1/29/94
4. 18 Marta Dydek San Jose State 2/17/05
18 Amy Pack Nevada 1/5/01
18 Sonya Howell Southeast La. 2/24/90
18 Tonie Greene Okla. City Univ 1/21/84
8. 17 Amy Pack San Jose State 1/12/01
17 Marcella Lopez West Texas State 2/18/85
10. 16 Anete Steinberga East Carolina 1/6/11
16 Fannie Goodwin vs. Marshall 3/6/09
16 Amy Pack Tulsa 1/21/01

FREE THROW PERCENTAGE (MINIMUM 7 MADE)
FT% NAME OPP DATE
1. 100.0 Cameasha Turner Marshall 1/24/15
100.0 Cameasha Turner NM State 11/14/14
100.0 Kayla Thornton vs. Georgia Tech 12/21/13
100.0 Kayla Thornton Texas State 12/1/12
100.0 Kim Smith Tulsa 1/27/11
100.0 Gloria Brown East Carolina 1/6/11
100.0 Gloria Brown New Mexico 12/20/10
100.0 Jareica Hughes Rice 3/7/08
100.0 Ana Valtierra UTPA 1/2/06
100.0 Kasia Krezel Illinois State 12/18/05
100.0 Vaida Zagurskyte Alabama State 12/6/03
100.0 Ingrid Goslin San Jose State 3/6/03
100.0 Christina Mata TCU 2/21/01
100.0 Christina Mata NMSU 12/8/00
100.0 Heidi Walker UL-Lafayette 11/19/00
100.0 Amy Pack at Nevada 11/26/99
100.0 Kim Daniel San Diego State 1/9/99
100.0 Kim Daniel UT-Arlington 12/30/98
100.0 Jill Lewis Rice 1/16/97
100.0 Kiana Taylor CS-Northridge 1/16/96
100.0 Cabora Mack BYU 2/3/96
100.0 Holly Russ Colorado State 3/1/91
100.0 Lisa Watson U.S. International 1/29/89
100.0 Traci Miller Northern Iowa 11/23/85
100.0 Lenore Dembs New Mexico 2/21/85

REBOUNDS
RB NAME OPP DATE
1. 20 Kayla Thornton Tulsa 1/11/14
20 Kanequa Chancellor SE Missouri State 11/29/97
3. 19 Gloria Brown at Southern Miss 1/26/12
19 Charnette Phelps UAB 1/22/06
5. 18 Kayla Thornton Tulane 2/1/14
18 Chrishauna Parker vs. UAB 3/14/13
18 Monica Ramirez Colorado State 1/15/94
18 Marcella Lopez West Texas State 2/18/85
18 Tonie Greene Eastern NM 2/17/83
18 Tonie Greene Central Arizona 2/12/83

ALL OTHER WITH 17
17 Anete Steinberga Tulane 3/8/13
17 Gloria Brown Tulane 2/13/11
17 Dragana Zoric Houston 12/4/02
17 Dragana Zoric Houston 12/4/02
17 DaTechia Specht Fort Lewis 11/25/97
17 Charsa Palamore New Mexico 3/1/95
17 Charsa Palamore San Diego State 1/19/91
17 Charsa Palamore UT-Pan American 12/15/90
17 Charsa Palamore Loyola Marymount 2/8/90
17 Charsa Palamore NMSU 11/28/89
17 Vernita Gant New Mexico 11/29/86

ASSISTS
AST NAME OPP DATE
1. 13 Jareica Hughes at SMU 1/15/10
13 Shalana Taylor at Illinois State 12/19/04
13 Shalana Taylor SMU 1/27/05
12 Martha Contreras Southern Colorado 1/31/88
5. 11 Kelli Willingham CS Northridge 2/3/10
11 Jareica Hughes Southern Miss 2/21/09
11 Tiffney Touton at SMU 1/3/02
11 Christina Mata SJSU 2/5/00
9. 10 Dietra Caldwell Tulsa 2/7/10
10 Briana Green UCF 1/24/10
10 Briana Green SVSU 11/22/08
10 Jareica Hughes NMSU 12/8/07
10 Jareica Hughes PVAMU 12/12/06
10 Shalana Taylor Hawaii 2/19/05
10 Shalana Taylor Northern Colorado 12/17/04
10 Terri Pedregon Wyoming 2/25/95
10 Sonya Howell Wichita State 12/10/88
10 Heather Estey Loyola-Marymount 1/9/87
10 Heather Estey Loyola-Marymount 1/29/85
10 Teri Staker New Mexico 1/14/85

STEALS
STL NAME OPP DATE
1. 10 Sonya Howell UT-San Antonio 2/17/90
2. 8 Natasha Lacy Southern Miss 3/8/08
8 Terri Pedregon Texas Tech 12/7/94
8 Martha Contreras UT-San Antonio 2/5/87
8 Chris Hall Eastern N.M. 1/13/87
6. 7 Chrishauna Parker Kansas State at Tulane 11/15/12
7 Natasha Lacy Houston 2/14/08
7 Natasha Lacy Western Kentucky 3/22/08
7 Jareica Hughes Tulsa 2/2/08
7 Kimya Murray Louisiana Tech 1/31/02
7 Terri Pedregon Christian Brothers 11/27/94
7 Norma Sierra UT-San Antonio 1/6/89
7 Martha Contreras Colorado State 1/23/88
7 Kris Hudson at NMSU 2/19/83

BLOCKS
BLK NAME OPP DATE
1. 10 Izabela Piekarska ULL 12/10/06
10 Kim Watts Auburn 12/11/81
3. 9 Kim Watts at NM State 12/15/79
3. 8 Gloria Brown at NM State 11/16/11
4. 7 Fannie Goodwin UCF 2/19/09
7 Izabela Piekarska Tulane 11/25/05
6. 6 Gloria Brown Tulane 2/13/11
6 Gloria Brown Houston 1/16/11
6 Izabela Piekarska SMU 1/31/08
6 Izabela Piekarska Memphis 2/10/07
6 Marta Dydek at Louisiana Tech 2/24/05
6 Marta Dydek Fresno State 1/15/05
6 Donetta Yellets SW Texas State 2/7/87
6 Marcella Lopez West Texas State 2/18/85
6 Kim Watts Colorado State 1/30/82
6 Kim Watts Wyoming 1/29/82
6 Kim Watts at Utah 1/4/82
6 Kim Watts Marquette 12/12/81
6 Kim Watts Juarez 12/5/81

TURNOVERS
TO NAME OPP DATE
1. 15 Holly Russ Lamar 1/3/91
2. 13 Selina Thomas West Texas State 2/4/85
3. 11 Kristi Lattin Grambling State 12/5/98
11 LaShonda Gray Grambling State 12/5/98
11 Holly Russ San Diego State 2/16/91
11 Liz Rayas Northern Arizona 3/4/86
7. 10 Amy Pack SMU 1/19/01
10 Terri Pedregon NMSU 12/2/93
10 Holly Russ TCU 11/23/91
10 Sonya Howell Wichita State 12/10/88

Bold denotes active players

UTEP RADIO & TV SHEET


#1 Starr Breedlove
 5-6, Sr.-TR
 10.5 PPG
 2.5 RPG
 4.0 APG
 0.0 BPG
 3.2 SPG
 26.2 MPG



#2 Cameasha Turner
 5-9, Sr.-3L
 10.2 PPG
 4.5 RPG
 1.5 APG
 0.5 BPG
 1.9 SPG
 28.2 MPG



#4 Lulu McKinney
 5-7, So.-1L
 7.8 PPG
 2.1 RPG
 2.0 APG
 0.2 BPG
 1.1 SPG
 22.9 MPG



#5 Shaylan Coleme
 5-7, Fr.-HS
 0.4 PPG
 1.3 RPG
 0.6 APG
 0.0 BPG
 0.3 SPG
 6.9 MPG



#10 Wiktoria Zapart
 6-1, Fr.-HS
 0.4 PPG
 2.3 RPG
 0.0 APG
 1.5 BPG
 0.5 SPG
 7.8 MPG



#12 Sparkle Taylor
 5-10, Jr.-2L
 10.3 PPG
 3.0 RPG
 0.2 APG
 0.3 BPG
 0.6 SPG
 16.9 MPG



#14 Najala Howell
 5-10, Fr.-HS
 2.1 PPG
 2.4 RPG
 0.3 APG
 0.0 BPG
 0.2 SPG
 10.5 MPG



#15 Agata Dobrowolska
 6-3, Sr.-2L
 2.7 PPG
 3.4 RPG
 0.4 APG
 0.5 BPG
 0.4 SPG
 11.5 MPG



#24 Jenzel Nash
 5-7, R-Jr.-2L
 13.2 PPG
 5.7 RPG
 2.3 APG
 0.0 BPG
 2.3 SPG
 22.5 MPG



#25 Anete Kirsteine
 5-11, Sr.-2L
 2.3 PPG
 0.7 RPG
 0.3 APG
 0.3 BPG
 0.3 SPG
 7.0 MPG



#32 Chrishauna Parker
 5-10, R-Sr.-3L
 5.8 PPG
 4.8 RPG
 0.8 APG
 0.0 BPG
 1.0 SPG
 17.3 MPG



#33 Daeshianna McCants
 6-1, So.-1L
 3.5 PPG
 3.5 RPG
 0.4 APG
 1.0 BPG
 0.7 SPG
 15.1 MPG



#34 Lawna Kennedy
 6-0, Sr.-1L
 2.9 PPG
 2.2 RPG
 0.3 APG
 0.5 BPG
 0.3 SPG
 12.1 MPG



#40 Rudiane Eduardo
 6-1, Sr.-1L
 2.2 PPG
 1.0 RPG
 0.3 APG
 0.3 BPG
 0.4 SPG
 7.2 MPG



#42 Tamara Seda
 6-4, Jr.-1L
 4.2 PPG
 2.9 RPG
 0.5 APG
 0.2 BPG
 0.5 SPG
 13.6 MPG



2015-16 UTEP STATISTICS

2015-16 UTEP Basketball
UTEP Combined Team Statistics (Jan. 1, 2016)
All games

RECORD: OVERALL HOME AWAY NEUTRAL
ALL GAMES 10-1 7-0 2-1 1-0
CONFERENCE 1-0 0-0 1-0 0-0
NON-CONFERENCE 9-1 7-0 1-1 1-0

Table with 23 columns: #, Player, gp-gs, min, avg, fg-fga, fg%, 3fg-fga, 3fg%, ft-fa, ft%, off, def, tot, avg, pf, dq, a, to, blk, stl, pts, avg. Rows include individual players like NASH, Jenzel and summary rows for Team, Total, and Opponents.

TEAM STATISTICS table with columns: TEAM STATISTICS, UTEPW, OPP, Date, Opponent, Score, Att. Rows include SCORING, FIELD GOALS-ATT, 3 POINT FG-ATT, FREE THROWS-ATT, REBOUNDS, ASSISTS, TURNOVERS, STEALS, BLOCKS, ATTENDANCE.

Score by Periods table with columns: Score by Periods, 1st, 2nd, 3rd, 4th, Totals. Rows for UTEP and Opponents.



2016 UTEP C-USA ONLY STATISTICS

2015-16 UTEP Basketball UTEP Combined Team Statistics (Jan. 1, 2016) Conference games

RECORD:	OVERALL	HOME	AWAY	NEUTRAL
ALL GAMES	1-0	0-0	1-0	0-0
CONFERENCE	1-0	0-0	1-0	0-0
NON-CONFERENCE	0-0	0-0	0-0	0-0

#	Player	gp-gs	min	avg	Total		3-Point		F-Throw		Rebounds				pf	dq	a	to	blk	stl	pts	avg
					fg-fga	fg%	3fg-fga	3fg%	ft-fa	ft%	off	def	tot	avg								
01	BREEDLOVE, Starr	1-1	27	27.0	5-14	.357	2-5	.400	3-5	.600	2	1	3	3.0	3	0	3	4	0	5	15	15.0
24	NASH, Jenzel	1-1	24	24.0	4-12	.333	2-4	.500	2-4	.500	3	2	5	5.0	2	0	1	1	0	0	12	12.0
12	TAYLOR, Sparkle	1-1	22	22.0	5-10	.500	0-0	.000	0-0	.000	0	1	1	1.0	3	0	0	1	0	1	10	10.0
34	KENNEDY, Lawna	1-0	13	13.0	1-2	.500	0-0	.000	4-4	1.000	1	2	3	3.0	1	0	0	1	1	1	6	6.0
04	MCKINNEY, Lulu	1-0	30	30.0	2-9	.222	1-4	.250	0-0	.000	0	4	4	4.0	3	0	3	2	0	1	5	5.0
02	TURNER, Cameasha	1-1	29	29.0	1-5	.200	1-5	.200	2-2	1.000	2	4	6	6.0	4	0	2	3	0	2	5	5.0
25	KIRSTEINE, Anete	1-0	9	9.0	1-3	.333	1-3	.333	0-0	.000	0	1	1	1.0	0	0	0	0	1	0	3	3.0
42	SEDA, Tamara	1-0	15	15.0	1-3	.333	0-0	.000	0-0	.000	2	3	5	5.0	3	0	0	2	1	0	2	2.0
15	DOBROWOLSKA, Aga	1-1	19	19.0	1-2	.500	0-0	.000	0-0	.000	4	3	7	7.0	2	0	2	2	0	0	2	2.0
33	MCCANTS, Daeshiann	1-0	1	1.0	0-0	.000	0-0	.000	0-0	.000	1	0	1	1.0	0	0	0	0	0	0	0	0.0
14	HOWELL, Najala	1-0	6	6.0	0-0	.000	0-0	.000	0-0	.000	0	0	0	0.0	0	0	0	1	0	0	0	0.0
10	ZAPART, Wiktoria	1-0	5	5.0	0-0	.000	0-0	.000	0-0	.000	2	0	2	2.0	0	0	0	0	0	0	0	0.0
Team											2	4	6									
Total.....		1	200		21-60	.350	7-21	.333	11-15	.733	19	25	44	44.0	21	0	11	17	3	10	60	60.0
Opponents.....		1	200		17-52	.327	5-16	.313	15-19	.789	12	23	35	35.0	15	-	10	17	1	9	54	54.0

TEAM STATISTICS	UTEPW	OPP	Date	Opponent	Score	Att.
SCORING	60	54	* 1/1/16	at Rice	w 60-54	508
Points per game	60.0	54.0				
Scoring margin	+6.0	-				
FIELD GOALS-ATT	21-60	17-52				
Field goal pct	.350	.327				
3 POINT FG-ATT	7-21	5-16				
3-point FG pct	.333	.313				
3-pt FG made per game	7.0	5.0				
FREE THROWS-ATT	11-15	15-19				
Free throw pct	.733	.789				
F-Throws made per game	11.0	15.0				
REBOUNDS	44	35				
Rebounds per game	44.0	35.0				
Rebounding margin	+9.0	-				
ASSISTS	11	10				
Assists per game	11.0	10.0				
TURNOVERS	17	17				
Turnovers per game	17.0	17.0				
Turnover margin	+0.0	-				
Assist/turnover ratio	0.6	0.6				
STEALS	10	9				
Steals per game	10.0	9.0				
BLOCKS	3	1				
Blocks per game	3.0	1.0				
ATTENDANCE	0	508				
Home games-Avg/Game	0-0	1-508				
Neutral site-Avg/Game	-	0-0				

* = Conference game

Score by Periods	1st	2nd	3rd	4th	Totals
UTEP	12	14	10	24	60
Opponents	11	10	16	17	54