



OKLAHOMA BASKETBALL

3 FINAL FOURS ♦ 4 BIG 12 TOURNAMENT CHAMPIONSHIPS ♦ 6 BIG 12 REGULAR SEASON CHAMPIONSHIPS ♦ 16 STRAIGHT NCAA TOURNAMENTS

OKLAHOMA SCHEDULE/RESULTS

N4	SW OKLA. STATE (Ex.)	7 p.m.	W, 111-73
N13	WINTHROP	7 p.m.	W, 78-48
N16	NORTH TEXAS	7 p.m.	FCSC
N19	BYU	6 p.m.	FSSW+
N22	at Bradley	2 p.m.	
N26	vs. Utah #	3:15 p.m.	
N28	vs. Boston College #	7 p.m.	
D2	UALR	7 p.m.	FSSW+
D6	at Washington	5:30 p.m.	PAC 12
D9	at Tulsa	7 p.m.	
D13	UTSA	2 p.m.	FSOK
D20	vs. Texas A&M \$	4 p.m.	FS1
D30	KANSAS	7 p.m.	SSTV
J3	at Baylor	3:30 p.m.	FS1
J6	at TCU	6 p.m.	FSSW+
J10	KANSAS STATE	1 p.m.	SSTV
J16	at Oklahoma State	12 p.m.	FSN
J20	TEXAS TECH	10:30 a.m.	SSTV
J23	at Texas	11 a.m.	FSN
J27	WEST VIRGINIA	7 p.m.	SSTV
J30	at Iowa State	1 p.m.	FSN
F3	OKLAHOMA STATE	7 p.m.	SSTV
F6	TCU	2 p.m.	SSTV
F9	at Kansas State	7 p.m.	
F14	TEXAS	1:30 p.m.	FS1
F17	at West Virginia	6 p.m.	
F20	at Kansas	7 p.m.	ESPN3
F22	BAYLOR	8 p.m.	ESPN
F27	IOWA STATE	2 p.m.	SSTV
M1	at Texas Tech	6:30 p.m.	
M4-7	Big 12 Championships ^	TBD	FSN/FS1
M18-21	NCAA First/Second Rounds	TBD	TBD
M25-28	NCAA Regionals	TBD	TBD
A3-5	NCAA Final Four	TBD	TBD

All times Central and subject to change
 # Junkanoo Jam (Freeport, Bahamas)
 \$ Big 12/SEC Challenge (Oklahoma City, Okla.)
 ^ Oklahoma City, Okla.

TELEVISION: FCSC

Play-by-Play Chad McKee
Analyst Dan Hughes

RADIO: SOONER SPORTS NETWORK

Listen KOKC 1520 AM
Online SoonerSports.com
Play-by-Play Brian Brinkley

OU COMMUNICATIONS

Associate Director/WBB Contact Tyler Pigg
Email tpigg@ou.edu
Cell 334-750-0791
Office: 405-325-3671

GAME 2

#17/18 OKLAHOMA (1-0) vs. NORTH TEXAS (0-1)

Monday, Nov. 19, 2015 ■ 7 p.m. CT ■ Norman, Okla. ■ Lloyd Noble Center (11,562)



SOONERS

Head Coach: Sherri Coale
 Record at OU: 421-206 (20th year)
 Overall Record: Same
 Last Game: Won 78-48 vs. Winthrop



MEAN GREEN

Head Coach: Julie Mitchell
 Record at Winthrop: 0-1 (1st year)
 Overall Record: Same
 Last Game: Lost 69-61 vs. San Francisco

GAMEDAY STORYLINES

► Oklahoma has won 16 out of its last 17 home games at the Lloyd Noble Center dating back to the 2013-14 season. During that stretch, OU has averaged 75.9 points on its home floor, outscoring opponents by 16.2 points per game. The Sooners only loss during the run was last season's home finale against Kansas.

► OU won last season's meeting against North Texas on the road, 68-39, in Denton, Texas. The Sooners held the Mean Green to just one made 3-pointer and to 16 points in the first half. The 39 points by North Texas in last year's game was the fewest allowed by Oklahoma last season. OU is 21-2 all-time against North Texas and has won 13 straight meetings against the Mean Green.

► In Friday's win over Winthrop, the Sooners scored 38 points off of 21 Winthrop turnovers. OU forced a season-high 37 turnovers last season at North Texas.

► The Sooners are ranked No. 17 in the AP and No. 18 in the USA Today Coaches top 25 preseason polls. OU has appeared in the top 25 of both preseason polls to begin the year 15 times in the last 16 seasons.

► Oklahoma finished the 2014-15 season with a 21-12 overall record (13-5 Big 12; second place) and advanced to the NCAA Tournament (No. 5 seed) for the 16th consecutive year. The Sooners return four starters from last year's squad including Big 12 Freshman of the Year **Gabbi Ortiz** and Big 12 Newcomer of the Year **Peyton Little**. OU returns 11 letterwinners from last season's team that ranked 26th in the nation in scoring (74.7 points per game).

PROBABLE OKLAHOMA STARTERS (BASED ON PREVIOUS GAME)

21 GABBI ORTIZ • G
 5-9 • So. • Racine, Wis.
 The Prairie School



NOTES: Preseason All-Big 12 First Team (voted on by coaches) ... 2015 Big 12 Freshman of the Year ... Won gold medal at FIBA U19 World Championships this summer with Team USA ... Led Sooners in assists per game (3.5) and minutes played (32.3) as a freshman ... Averaged 8.2 points per game and 3.7 rebounds per game in 2014-15 ... Started all 33 games a year ago.

PTS	REB	AST	MIN
0.0	1.0	2.0	23.0

32 LANESIA WILLIAMS • G
 5-7 • So. • Oklahoma City, Okla.
 Northeast Academy



NOTES: Six points, four rebounds and two assists in opener ... Seven career starts ... Averaged 3.5 ppg and 1.3 rpg as a freshman ... Played 12.5 minutes per game last season ... Played with teammate T'ona Edwards at Northeast Academy.

PTS	REB	AST	MIN
6.0	4.0	2.0	23.0

10 PEYTON LITTLE • G
 5-11 • RS-Jr. • Abilene, Texas
 Texas A&M



NOTES: Big 12 Newcomer of the Year and All Big 12 First Team selection in 2014-15 ... Started 31 games and led the Sooners with 12.6 ppg ... Hit a team-high 56 3-points (shooting .344) ... Led team with 15.1 points per game in Big 12 play ... Was 49-for-57 (.860) from free throw line against conference opponents ... Scored in doubles figures in 11 out of last 16.

PTS	REB	AST	MIN
17.0	1.0	4.0	27.0

23 MADDIE MANNING • G
 6-2 • RS-Jr. • Ankeny, Iowa
 Ankeny High School



NOTES: Started Friday against Winthrop, her first start since true freshman season at Hawai'i (Nov. 25, 2012 ... Played in 31 games all off the bench in 14-15 after missing nearly two seasons with injuries ... Scored 4.7 points per game and added in 2.2 rebounds per game ... Scored career-high 15 points in first round of NCAA Tournament versus Quinnipiac.

PTS	REB	AST	MIN
7.0	1.0	4.0	19.0

42 KAYLON WILLIAMS • F
 6-3 • RS-Sr. • Midwest City, Okla.
 Midwest City High School



NOTES: All-Big 12 Second Team selection during the 2014-15 season ... Started 32 games, ranking second on the team with 12.2 points per game ... Led squad with 6.6 rebounds per game ... Was fourth in the nation with a .596 field goal percentage ... Led the Big 12 in conference play with a .595 field goal percentage and 130 offensive rebounds ... Has made 51 career starts and appeared in 96 games.

PTS	REB	BLK	MIN
13.0	7.0	1.0	21.0

HEAD COACH SHERRI COALE

► Sherri Coale is in her 20th season as the head coach of Oklahoma women's basketball and is the program's all-time leader in wins



► Owns a 421-206 (.671) collegiate record over 19 years

► Guided OU to 16 straight NCAA Tournaments - the sixth longest active streak in the nation

► Led the Sooners to three Final Fours (2002, 2009, 2010) and the 2002 national championship game

► Has won six Big 12 regular season championships and four Big 12 Tournament titles during her tenure

► Four-time Big 12 Coach of the Year (2000, 2001, 2006 and 2009)

► Coached 13 All-Americans and 58 All-Big 12 selections, along with four CoSIDA Academic All-America honorees

► Has led the Sooners to 14 20-win seasons during her tenure, including a program-best 32 victories twice (2001-02; 2008-09)

► Recorded a 201-111 (.644) mark against Big 12 opponents since the 1996-97 season

► Four-time WBCA District 5 Coach of the Year

► 14 WNBA Draft Picks

► Served as head coach of USA Basketball's World University Games squad in 2013, leading the United States to a gold medal

► Will be inducted into the Women's Basketball Hall of Fame in June 2016

SHERRI COALE YEAR BY YEAR

Year	School	Record	Pct.
1996-97	Oklahoma	5-22	.185
1997-98	Oklahoma	8-19	.296
1998-99	^ Oklahoma	15-14	.517
1999-00	* Oklahoma	25-8	.766
2000-01	* Oklahoma	28-6	.824
2001-02	* Oklahoma	32-4	.889
2002-03	* Oklahoma	19-13	.594
2003-04	* Oklahoma	24-9	.727
2004-05	* Oklahoma	17-13	.567
2005-06	* Oklahoma	31-5	.861
2006-07	* Oklahoma	28-5	.848
2007-08	* Oklahoma	22-9	.710
2008-09	* Oklahoma	32-5	.865
2009-10	* Oklahoma	27-11	.711
2010-11	* Oklahoma	23-12	.657
2011-12	* Oklahoma	21-13	.618
2012-13	* Oklahoma	24-11	.686
2013-14	* Oklahoma	18-15	.545
2014-15	* Oklahoma	21-12	.636
2015-16	Oklahoma	1-0	1.000
Totals	20 Years	421-206	.671

* NCAA Tournament

^ Women's National Invitation Tournament

MONDAY'S GAME BASICS

No. 17/18 Oklahoma continues its three-game season opening homestand Monday as the Sooners host North Texas at 7 p.m. CT inside Lloyd Noble Center. OU, who finished last year with a 21-12 record and advanced to the second round of the NCAA Tournament, opened the season Friday with a 78-48 win over Winthrop. The Sooners return four starters from last season's squad that placed second in the Big 12 with a 13-5 record in conference play. North Texas is led by first-year head coach and former Texas assistant **Jalie Mitchell**. Oklahoma is 12-0 against North Texas at home in Norman. Monday's contest will air on the Sooner Radio Network with **Brian Brinkley** calling the action. The game will be televised by Sooner Sports TV (Fox College Sports Central) with **Chad McKee** and **Dan Hughes** announcing.

GAME ONE RECAP: WINTHROP

► Fueled by four double-digit scoring performances, the No. 17/18 Oklahoma women's basketball team opened its season, the 20th for head coach **Sherri Coale**, with a 78-48 victory over Winthrop on Friday night inside Lloyd Noble Center.

► Redshirt junior **Peyton Little** (game-high 17 points), junior **Derica Wyatt** (16 points), redshirt senior **Kaylon Williams** (13 points) and sophomore **Vionise Pierre-Louis** (10 points) all reached double figures for the Sooners.

► The Sooners led the entire contest and used several runs to pull away from the Eagles, including an 11-0 one in a 2:09 stretch in the first quarter to build a 16-4 lead. Winthrop cut OU's advantage down to 38-30 with 5:50 left in the third quarter, but the Sooners outscored the Eagles 40-18 over the rest of the game to secure the win.

► OU's defense looked strong throughout the night, turning 21 Winthrop turnovers into 38 points and giving up just 18 second-half points. The Sooners limited the Eagles to 38.9 field goal percentage (21 for 54) and just 12.5 percent from 3-point range (1 for 8).

PREVIEWING NORTH TEXAS

► Located in Denton, Texas, North Texas is a school of 36,621 students that competes in Conference USA. The Mean Green finished 5-24 (4-14 C-USA; 13th) last season. North Texas was picked 14th in this year's C-USA preseason poll.

► North Texas returns two starters from last year's squad in junior guard Candice Adams and senior forward Acheil Tac. Adams was third on the team with 6.4 points per game in 28 starts. Tac averaged 5.7 points per game and led the Mean Green with 6.8 rebounds per game.

► Head coach **Jalie Mitchell** played at North Texas from 1999-02 and is one of two players in school history to have their number retired. The 2002 Sun Belt Conference Player of the Year, Mitchell finished her career as the program's all-time leading scorer (1,764 points). Mitchell is familiar with the Big 12, previously working as an assistant at Texas for the last three seasons.

OU-NORTH TEXAS SERIES HISTORY

► Last year in Denton, Oklahoma's defense held North Texas to just 16 first-half points as the Sooners defeated the Mean Green, 68-39, on Dec. 7, 2014. Nine players scored for OU in the win as the Sooners forced a season-high 37 turnovers.

► Peyton Little finished in doubles figures with 11 points and pulled down seven rebounds in the win, while Sharane Campbell-Olds and Kaylon Williams scored 10 points apiece, respectively.

► Monday's game will mark the 24th meeting between Oklahoma and North Texas (OU leads 21-2). The Sooners are 12-0 all-time against in Norman against the Mean Green. OU has won 11 straight meetings versus North Texas.

OKLAHOMA NUMERICAL ROSTER

No.	Name	Position	Height	Class	Hometown (Last School)
0	Vionise Pierre-Louis	C	6-4	So.	Lake Worth, Fla. (Grandview Prep)
2	T'ona Edwards	G	5-5	Jr.	Spencer, Okla. (Northeast Academy)
10	Peyton Little	G	5-11	RS-Jr.	Abilene, Texas (Wylie)
11	Derica Wyatt	G	5-10	Jr.	Brentwood, Tenn. (Franklin Road Academy)
12	Gileysa Penzo	G	5-9	RS-Fr.	San Juan, Puerto Rico (Monteverde [Fla.] Academy)
21	Gabbi Ortiz	G	5-9	So.	Racine, Wis. (The Prairie School)
22	Shaya Kellogg	F	6-2	Jr.	Ames, Iowa (Ames)
23	Maddie Manning	G	6-2	RS-Jr.	Ankeny, Iowa (Ankeny)
24	Ijeoma Odimgbe	F	6-4	Fr.	Savannah, Ga. (Johnson)
25	Gioya Carter	G	5-9	Jr.	Midwest City, Okla. (Carl Albert)
30	McKenna Treece	F	6-4	So.	St. Peters, Mo. (Incarnate Word [St. Louis] Academy)
32	LaNesia Williams	G	5-7	So.	Oklahoma City, Okla. (Northeast Academy)
42	Kaylon Williams	F	6-3	RS-Sr.	Midwest City, Okla. (Midwest City)

STATS COMPARISON



CATEGORY

Overall Record	1-0	0-1
Points Per Game	78.0	61.0
Opp. Points Per Game	48.0	69.0
Rebounds Per Game	42.0	30.0
Rebounding Margin	+20.0	-6.0
Field Goal Pct.	.536	.377
Opp. Field Goal Pct.	.389	.434
3-Point Pct.	.471	.375
Opp. 3-Point Pct.	.125	.316
Free Throw Pct.	.625	.833
Personal Fouls Per Game	11.0	24.0
Assists Per Game	21.0	12.0
Turnovers Per Game	21.0	22.0
Blocked Shots Per Game	3.0	7.0
Steals Per Game	13.0	7.0

2015-16 BIG 12 STANDINGS

Through Saturday, Nov. 14

Team	Big 12			Overall		
	W	L	Pct.	W	L	Pct.
Baylor	0	0	.000	1	0	1.000
Iowa State	0	0	.000	1	0	1.000
Oklahoma	0	0	.000	1	0	1.000
Oklahoma State	0	0	.000	1	0	1.000
TCU	0	0	.000	1	0	1.000
Texas	0	0	.000	1	0	1.000
Texas Tech	0	0	.000	1	0	1.000
West Virginia	0	0	.000	1	0	1.000
Kansas	0	0	.000	0	0	.000



OKLAHOMA QUICK FACTS

Official Name: University of Oklahoma
Location: Norman, Okla.
Founded: 1890
Enrollment: 30,813
Nickname: Sooners
Colors: Crimson and Cream
President: David L. Boren
Athletics Director: Joe Castiglione
Arena: Lloyd Noble Center (11,562)
First Year of Basketball: 1974-75
NCAA Tournament Appearances: 18 (16 straight)
WNIT Appearances: 3
All-Time Record: 745-500 (.598)
Regular Season Conference Championships: 6 (2000, 2001, 2002, 2006, 2007, 2009)
Conference Tournament Championships: 4 (2003, 2004, 2006, 2007)
Head Coach: Sherri Coale (Okla. Christian '87)
Career Record: 421-206 (20th year)
Oklahoma Record: Same
NCAA Appearances: 16
WNIT Appearances: 1
Assistant Coaches: Jan Ross (Okla. Christian '86), Pam DeCosta (Metropolitan State '86), Chad Thrailkill (Southern Nazarene, '93)
Director of Operations: Guy Austin
Strength and Conditioning Coach: Brett Frantz
Video Coordinator: Ethan Burton
Graduate Assistant: Colton Coale
Equipment Manager: Ryan Lawrence
Athletics Trainer: Carolynn Loon
Official Website: SoonerSports.com

SOONERS PICKED THIRD IN BIG 12

- ▶ Oklahoma was picked third in this year's official Big 12 preseason poll. The order of finish was selected by the league's head coaches (they were not allowed to vote for their own team).
- ▶ Baylor finished atop the poll with 80 points and eight first-place votes, while Texas was picked second with 70 points and one first-place vote. The Sooners were tabbed third with 69 points and a first-place vote. Iowa State (48 points), TCU (47 points), West Virginia (40 points), Kansas State (36 points), Oklahoma State (27 points), Texas Tech (18 points) and Kansas (15 points) rounded out the poll.
- ▶ Sophomore guard Gabbi Ortiz was selected to the Preseason All-Big 12 Team after her stellar freshman campaign. Teammates Gioya Carter, Peyton Little and Kaylon Williams were named to the Preseason All-Big 12 honorable mention team.

DEFENDING THE HOME COURT

- ▶ One of the keys to OU's successful 2014-15 season was its performance in home games. The Sooners were 12-1 in Norman a year ago with their only loss coming in their finale to Kansas. Oklahoma averaged 76.4 points per game at the Lloyd Noble Center, outscoring its opponents by an average of 14.4 points per contest.
- ▶ OU knocked off two top-five opponents at the Lloyd Noble Center during the 2014-15 season. The Sooners topped fifth-ranked Texas, 70-59, on Jan. 14. On Feb. 25, OU defeated No. 3 Baylor, 68-64, marking the first time the Sooners defeated two top-five opponents in one season since 2008-09.
- ▶ The Sooners have won 16 out of their last 17 games at home dating back to the 2013-14 season.

HALL OF FAME

- ▶ Head coach **Sherri Coale** was selected as one of six members for the 2016 Women's Basketball Hall of Fame on July 24, 2015. Coale will be inducted into the hall of fame on June 11, 2016 in Knoxville, Tenn.
- ▶ She is joined in the 2016 class by June Corteau (contributor), Joe Lombard (coach), Jackie Stiles (player), Bill Tipps (contributor) and Natatie Williams (player).
- ▶ Coale has led OU to three Final Fours and 16 consecutive NCAA Tournament appearances, while winning the Big 12 regular season title six times and the Big 12 Tournament on four occasions.
- ▶ In total, Coale has coached four first-team All-Americans, six Big 12 Players of the Year and 14 WNBA Draft selections. Her players have also consistently achieved in the classroom, with four of them being named CoSIDA Academic All-Americans and 51 earning 103 Academic All-Big 12 honors under her direction.

QUICK HITS

- ▶ Redshirt freshman guard **Gileysa Penzo** and freshman forward **Ijeoma Odingbe** both made their OU debuts Friday night versus Winthrop. Penzo scored one point and added in three rebounds in 17 minutes of action. Odingbe finished with one rebound, playing seven minutes off the bench.
- ▶ 11 Sooners played in the opening half versus Winthrop, including nine in the first quarter.
- ▶ OU shot over 50 percent for the second time in its last three games (dating back to the 2015 NCAA Tournament), finishing with a 53.6 mark (30 for 56) against Winthrop. The Sooners were 16 for 28 (57.1 percent) from the floor in the second half against the Eagles.
- ▶ OU's 47.1 3-point field goal percentage (8 for 17) in its season opener was its best performance from deep since shooting 47.8 percent (11 for 23) at Kansas State last season (Feb. 21, 2015).
- ▶ Junior guard **Derica Wyatt** scored 16 points in Friday's win, the second-most points by the junior in her career at OU. Wyatt's career-high came against UT-Arlington in 2013, finishing with 23 points and seven 3-pointers off the bench.
- ▶ Oklahoma is 31-8 all-time against current members of Conference USA.
- ▶ The Sooners return the majority of their production in every statistical category for 2015-16. That includes 81 percent of the team's points and rebounds, along with 85 percent of its assists, 81 percent of its blocks and 78 percent of its steals. OU also brings back 80 percent of its made 3-point field goals and its free throw production.
- ▶ 11 letterwinners return from last season's squad that combined to play 5,377 minutes a year ago.

UP NEXT

- ▶ The Sooners wrap up their season-opening homestand on Thursday when they take on BYU at the Lloyd Noble Center. Tip-off is set for 6 p.m. and the game will be televised by Sooner Sports TV on Fox Sports Southwest +.

BIG 12 PRESEASON COACHES' POLL

(First-place votes in parentheses)

Team	Points
1. Baylor (8)	80
2. Texas (1)	70
3. Oklahoma (1)	69
4. Iowa State	48
5. TCU	47
6. West Virginia	40
7. Kansas State	36
8. Oklahoma State	27
9. Texas Tech	18
10. Kansas	15

Preseason All-Big 12 Team

Nina Davis, Baylor
Bria Holmes, West Virginia
Niya Johnson, Baylor
Brittany Martin, Oklahoma State
Zahna Medley, TCU
Gabbi Ortiz, Oklahoma

Honorable Mention

Ariel Atkins, Texas
Imani Boyette, Texas
Gioya Carter, Oklahoma
Veja Hamilton, TCU
Alexis Jones, Baylor
Kelsey Lang, Texas
Breanna Lewis, Kansas State
Peyton Little, Oklahoma
Kaylon Williams, Oklahoma

Preseason Player of the Year

Nina Davis, Baylor

Preseason Newcomer of the Year

Alexis Jones, Baylor

Preseason Freshman of the Year

Lashann Higgs, Texas

2015-16 STATISTICS

##	Player	gp-gs	min	avg	Total		3-Point		F-Throw		Rebounds				pf	dq	a	to	blk	stl	pts	avg
					fg-fga	fg%	3fg-fga	3fg%	ft-fga	ft%	off	def	tot	avg								
10	Little, Peyton	1-1	27	27.0	7-13	.53	3-8	.37	0-0	.00	0	1	1	1.0	1	0	4	0	0	3	17	17.0
11	Wyatt, Derica	1-0	17	17.0	6-8	.75	4-6	.66	0-0	.00	0	1	1	1.0	1	0	2	1	0	2	16	16.0
42	Williams, Kaylon	1-1	21	21.0	4-7	.57	0-0	.00	5-6	.83	2	5	7	7.0	2	0	0	1	1	0	13	13.0
00	Pierre-Louis,Vionis	1-0	11	11.0	4-5	.80	0-0	.00	2-2	1.000	2	3	5	5.0	2	0	1	0	0	0	10	10.0
23	Manning, Maddie	1-1	19	19.0	3-5	.60	1-1	1.000	0-0	.00	1	0	1	1.0	0	0	4	1	2	1	7	7.0
32	Williams, LaNesia	1-1	23	23.0	3-9	.33	0-0	.00	0-0	.00	2	2	4	4.0	1	0	2	4	0	1	6	6.0
02	Edwards, T'ona	1-0	17	17.0	1-1	1.000	0-0	.00	2-4	.50	1	5	6	6.0	1	0	5	4	0	1	4	4.0
22	Kellogg, Shaya	1-0	18	18.0	2-4	.50	0-0	.00	0-0	.00	2	4	6	6.0	1	0	0	0	0	0	4	4.0
12	Penzo, Gileysa	1-0	17	17.0	0-1	.00	0-0	.00	1-4	.25	0	3	3	3.0	2	0	1	1	0	2	1	1.0
21	Ortiz, Gabbi	1-1	23	23.0	0-2	.00	0-2	.00	0-0	.00	0	1	1	1.0	0	0	2	7	0	3	0	0.0
24	Odimgbe, ljeoma	1-0	7	7.0	0-1	.00	0-0	.00	0-0	.00	1	1	2	2.0	0	0	0	1	0	0	0	0.0
Team											0	5	5				1					
Total.....		1	200		30-56	.53	8-17	.47	10-16	.62	11	31	42	42.0	11	0	21	21	3	13	78	78.0
Opponents.....		1	200		21-54	.38	1-8	.12	5-11	.45	6	16	22	22.0	18	-	6	21	4	16	48	48.0

TEAM STATISTICS	OU	OPP
SCORING	78	48
Points per game	78.0	48.0
Scoring margin	+30.0	-
FIELD GOALS-ATT	30-56	21-54
Field goal pct	.536	.389
3 POINT FG-ATT	8-17	1-8
3-point FG pct	.471	.125
3-pt FG made per gam	8.0	1.0
FREE THROWS-ATT	10-16	5-11
Free throw pct	.625	.455
F-Throws made per ga	10.0	5.0
REBOUNDS	42	22
Rebounds per game	42.0	22.0
Rebounding margin	+20.0	-
ASSISTS	21	6
Assists per game	21.0	6.0
TURNOVERS	21	21
Turnovers per game	21.0	21.0
Turnover margin	+0.0	-
Assist/turnover ratio	1.0	0.3
STEALS	13	16
Steals per game	13.0	16.0
BLOCKS	3	4
Blocks per game	3.0	4.0
ATTENDANCE	3713	0
Home games-Avg/Gam	1-3713	0-0
Neutral site-Avg/Game	-	0-0

Date	Opponent	Score	Att.
11/13/15	WINTHROP	w 78-48	3713

* - Conference game

Score by Periods	1st	2nd	3rd	4th	Totals
Oklahoma	19	17	25	17	78
Opponents	10	10	16	12	48

2014-15 RESULTS

Date	Opponent	Score	W/L	Attend.	Points Leader	Rebounds Leader	Assists Leader
11/14	Washington	90-80	W	5230	Campbell26	Campbell11	Little5
11/18	Lamar	100-73	W	4201	Campbell16	L. Williams8	Ortiz7
11/21	Bradley	104-55	W	5285	K. Williams16	Kornet7	Carter6
11/27	vs. USF #	68-83	L	1978	Campbell16	K. Williams6	Ortiz6
11/28	vs. Kentucky #	88-92	L (OT)	1988	Campbell23	Treece, K. Williams8	Ortiz4
11/29	vs. Illinois	78-76	W (OT)	2347	Ortiz, K. Williams15	Ortiz12	Carter4
12/7	at North Texas	68-39	W	1937	Kornet14	Little7	Edwards, L. Williams4
12/14	at UALR	62-66	L	1330	Kornet20	Pierre-Louis8	Campbell4
12/17	at Duke (13)	72-92	L	4006	Ortiz, Wyatt14	Ortiz5	Ortiz8
12/21	at Arkansas	64-71	L	3689	Kornet, Treece11	Kornet6	Little3
12/30	Yale	71-54	W	4990	K. Williams20	Campbell, K. Williams8	Ortiz8
1/4	West Virginia	71-60	W	5400	Carter24	Carter8	Ortiz, Carter3
1/7	at Kansas	69-57	W	1718	Carter19	K. Williams11	Ortiz3
1/10	at Texas Tech	75-58	W	4629	Little13	K. Williams7	Little, Carter3
1/14	Texas (5)	70-59	W	5610	Manning14	Little10	Manning, Campbell2
1/17	at TCU	97-81	W	1350	K. Williams25	K. Williams12	Carter5
1/19	Oklahoma State	73-54	W	7111	Carter18	Little7	Edwards2
1/24	Texas Tech	70-64	W	5676	Carter22	Carter9	Ortiz3
1/29	at Texas (14)	81-84	L (20T)	2813	Carter, Little16	Campbell, Ortiz, Little6	Ortiz3
2/1	at West Virginia	69-78	L	4069	Little15	Campbell5	Ortiz5
2/4	Iowa State	75-66	W	6042	Little18	Campbell10	Williams4
2/7	Kansas State	66-58	W	5353	Little19	K. Williams7	Carter, Little5
2/11	at Baylor (3)	66-89	L	7683	Little22	K. Williams9	Ortiz5
2/14	TCU	77-54	W	6475	Little21	K. Williams11	Edwards4
2/17	at Iowa State	76-84	L (OT)	9964	Little22	K. Williams7	Ortiz8
2/21	at Kansas State	73-64	W	5418	Little30	K. Williams12	Campbell4
2/25	Baylor (3)	68-64	W	5479	Campbell, K. Williams15	Campbell9	Ortiz5
2/28	Kansas	58-65	L	3000	K. Williams20	Campbell10	Ortiz4
3/2	at Oklahoma State	66-56	W	4364	K. Williams20	Ortiz7	Ortiz4
3/7	vs. West Virginia !	67-55	W	4224	Little15	K. Williams10	Ortiz4
3/8	vs. Texas !	46-59	L	4580	Carter, Little11	Campbell8	Campbell3
3/21	vs. Quinnipiac @	111-84	W	2830	Ortiz16	Carter5	Carter5
3/23	vs. Stanford (17) @	76-86	L	2532	K. Williams22	K. Williams10	Carter5

Associated Press rankings in parentheses

Paradise Jam Tournament (St. Thomas, USVI)

! Phillips 66 Big 12 Tournament (Dallas, Texas)

@ NCAA Tournament First/Second Round (Palo Alto, Calif.)

Record Summary	Overall	Home	Away	Neutral
All Games	21-12	12-1	6-8	3-3
Big 12 Games	13-5	8-1	5-4	0-0
Non-Conference Games	8-7	4-0	1-4	3-3

2014-15 POINTS, REBOUNDS, ASSISTS

Date	Opponent	00 PIERRE-LOU	1 KORNET	2 EDWARDS	10 LITTLE	11 WYATT	13 RITCHIE	21 ORTIZ	22 KELLOGG	23 MANNING	24 CAMPBELL	25 CARTER	30 TREECE	32 L. WILL	42 K. WILL.
11/14	Washington	2-3-1	14-2-0	0-0-1	12-6-5	DNP	DNP	3-2-4	DNP	1-0-1	26-11-1	5-2-0	2-0-0	2-2-1	23-10-1
11/18	Lamar	8-6-1	8-0-2	2-1-2	14-27	12-0-0	2-1-0	5-0-7	DNP	2-4-4	16-6-2	0-1-2	9-7-0	13-8-1	9-4-0
11/21	Bradley	8-5-0	5-7-2	2-3-2	15-1-2	8-0-0	8-1-1	9-1-0	DNP	4-2-3	3-6-3	9-3-6	11-6-1	6-4-3	16-4-2
11/27	vs. USF #	0-1-0	6-1-0	0-1-1	7-1-3	3-02	DNP	5-4-6	DNP	0-3-0	16-2-1	7-4-0	8-2-0	14-1-0	2-6-2
11/28	vs. Kentucky #	DNP	21-7-1	2-0-0	11-3-0	0-0-2	0-0-0	9-7-4	DNP	3-0-0	23-6-3	2-3-1	4-8-0	8-2-1	5-8-0
11/29	vs. Illinois #	8-2-0	0-1-0	0-0-1	11-1-2	6-2-1	DNP	15-12-1	DNP	0-0-0	14-10-2	3-3-4	0-0-0	6-5-3	15-5-1
12/7	at North Texas	4-3-1	14-6-0	0-3-4	11-7-1	0-2-2	0-0-0	2-3-1	0-0-0	DNP	10-2-1	6-4-1	2-2-0	9-2-4	10-4-3
12/14	at UALR	9-8-0	20-2-2	2-4-1	3-2-1	0-1-0	DNP	6-1-0	DNP	2-0-0	8-3-4	1-1-1	0-0-0	7-1-2	4-4-2
12/17	at Duke (13)	4-0-0	5-3-1	0-0-0	4-2-1	14-4-2	DNP	14-5-8	DNP	5-0-1	10-3-0	10-0-2	6-1-0	0-0-1	0-2-1
12/21	at Arkansas	0-2-0	11-6	DNP	4-2-3	7-2-0	DNP	5-4-2	DNP	2-1-0	9-5-0	9-2-0	11-4-0	6-2-0	DNP
12/30	Yale	0-1-0	0-2-0	0-1-0	18-3-0	0-2-0	2-0-0	0-4-8	DNP	5-1-0	0-8-1	17-6-4	6-4-0	3-0-2	20-8-1
1/4	West Virginia	0-4-0	5-4-0	8-0-1	3-4-2	DNP	DNP	3-2-3	DNP	1-0-1	10-7-1	24-8-3	2-3-1	2-2-1	13-7-1
1/7	at Kansas	DNP	0-1-0	0-2-0	17-1-1	DNP	DNP	8-4-3	DNP	DNP	4-3-2	19-7-1	0-2-0	7-0-0	14-11-1
1/10	at Texas Tech	2-4-0	3-2-0	2-2-0	13-3-3	3-0-0	0-0-0	12-4-2	0-0-0	4-2-0	12-6-1	8-5-3	4-2-0	6-0-0	6-7-1
1/14	Texas (5)	6-7-0	3-0-0	0-0-0	13-10-0	0-3-0	DNP	8-3-2	DNP	14-2-2	6-6-2	11-10	0-0-1	2-1-0	7-5-1
1/17	at TCU	6-3-0	0-0-0	2-2-2	8-2-2	DNP	DNP	13-4-4	DNP	19-2-2	8-4-2	24-5-5	DNP	2-0-0	25-12-4
1/19	Oklahoma State	0-5-1	3-2-0	0-0-3	13-7-2	3-1-0	0-0-0	2-1-2	0-1-1	5-2-2	11-0-0	18-2-1	0-0-0	2-1-0	16-4-0
1/24	Texas Tech	2-2-0	1-2-0	0-0-1	9-2-2	0-1-1	DNP	8-3-3	DNP	8-1-0	7-7-0	122-9-1	2-1-0	2-0-0	9-5-2
1/29	at Texas (14)	3-5-1	1-0-0	1-0-2	16-6-1	0-0-0	DNP	13-6-3	DNP	12-2-0	6-6-0	16-4-0	4-2-0	0-0-0	9-5-1
2/1	at West Virginia	9-4-0	0-0-0	0-0-0	15-2-1	0-1-0	DNP	11-1-5	DNP	5-4-2	8-5-2	7-2-3	4-2-1	0-2-0	10-4-0
2/4	Iowa State	0-2-0	DNP	0-3-1	18-1-2	2-0-0	DNP	11-5-2	DNP	9-6-3	3-10-2	10-8-2	0-0-0	7-4-0	14-5-4
2/7	Kansas State	4-0-0	8-1-0	0-1-1	19-4-5	3-0-0	DNP	11-2-2	DNP	0-1-0	2-4-3	5-6-5	2-0-0	0-0-1	12-7-0
2/11	at Baylor (3)	4-3-2	0-1-0	0-0-0	22-4-3	4-1-0	0-0-0	16-1-5	0-1-0	0-3-0	8-1-1	8-2-0	0-2-0	0-1-3	4-9-2
2/14	TCU	5-1-0	2-2-0	4-2-4	21-2-3	0-0-2	0-0-0	9-2-2	2-1-1	5-4-3	6-7-3	7-3-1	2-1-1	0-0-0	14-11-2
2/17	at Iowa State	2-3-0	0-0-0	0-1-1	22-3-1	0-0-0	DNP	10-4-8	DNP	9-6-3	4-10-2	10-8-2	0-0-0	7-3-0	14-5-4
2/21	at Kansas State	3-5-0	3-1-0	0-1-2	30-6-2	5-2-1	DNP	5-4-3	DNP	0-0-0	6-2-4	6-1-3	0-0-0	2-0-0	13-12-1
2/25	Baylor (3)	2-3-0	0-0-0	0-1-0	13-3-0	DNP	DNP	7-3-5	DNP	4-3-0	15-9-1	12-5-4	DNP	DNP	15-5-0
2/28	Kansas	5-2-0	2-0-0	0-0-0	4-5-0	3-0-0	0-0-0	8-6-4	DNP	3-2-2	11-10-1	2-1-0	0-0-0	0-0-1	20-9-1
3/2	at Oklahoma State	5-5-0	0-0-0	5-4-1	16-5-0	0-1-0	0-0-0	0-7-4	DNP	4-0-0	4-3-0	12-1-1	0-0-0	DNP	20-5-0
3/7	vs. West Virginia !	6-3-1	DNP	0-0-0	15-2-0	DNP	DNP	6-6-4	DNP	11-6-1	10-6-2	5-1-0	DNP	0-1-0	14-10-3
3/8	vs. Texas !	1-3-0	0-0-0	0-0-0	11-2-2	DNP	DNP	8-2-2	DNP	2-5-2	5-8-3	11-3-0	DNP	0-0-0	8-7-1
3/21	vs. Quinnipiac @	15-9-2	6-4-1	7-2-4	5-0-1	0-0-0	0-0-0	16-3-3	0-0-2	15-5-3	11-9-4	6-4-5	14-4-0	4-1-4	12-0-0
3/23	at Stanford @	0-2-0	0-2-1	7-0-0	4-3-0	DNP	DNP	12-5-5	DNP	0-2-0	9-8-3	20-1-1	2-1-1	0-0-0	22-10-1

Associated Press rankings in parentheses
 # Paradise Jam Tournament (St. Thomas, USVI)
 ! Phillips 66 Big 12 Tournament (Dallas, Texas)
 @ NCAA Tournament First/Second Round (Palo Alto, Calif.)

2014-15 GAME-BY-GAME STATS

	FG-A	Pct.	3FG-A	Pct.	FT-A	Pct.	O/D/T	PF	A	TO	B	S	1	2	TP
Washington	27-56	.482	9-23	.391	17-20	.850	5/25/30	30	10	20	4	8	32	48	80
at Oklahoma	32-63	.508	7-21	.333	19-37	.514	17/26/43	21	15	17	3	10	48	42	90
Lamar	27-62	.435	7-22	.318	12-19	.632	11/22/33	13	7	23	2	7	43	30	73
at Oklahoma	41-76	.539	11-31	.539	7-10	.700	14/28/42	20	28	15	2	9	50	50	100
Bradley	16-61	.262	3-14	.214	20-29	.690	14/20/34	17	7	25	2	10	30	25	55
at Oklahoma	43-73	.589	9-22	.409	9-16	.563	14/36/50	23	25	20	7	9	54	50	104
Oklahoma #	27-70	.386	10-23	.435	4-12	.333	13/16/29	25	15	11	0	6	29	39	68
vs. USF #	27-59	.458	5-18	.278	24-31	.774	18/33/51	17	9	17	3	6	38	45	83
Kentucky #	27-77	.351	4-19	.211	34-53	.642	17/29/46	30	7	22	5	11	35	44/13*	92
vs. Oklahoma	32-71	.451	6-17	.353	18-33	.545	14/33/47	40	12	29	2	7	38	41/9*	88
Illinois #	25-61	.410	10-24	.417	16-22	.727	9/23/32	27	16	18	5	13	34	35/7*	76
vs. Oklahoma #	26-61	.426	8-21	.381	18-29	.621	17/30/47	25	15	23	0	7	37	32/9	78
Oklahoma	25-58	.431	5-23	.217	13-18	.722	9/33/42	17	18	31	4	13	40	28	68
at North Texas	14-52	.269	1-8	.125	10-16	.625	9/27/36	21	3	37	1	9	16	23	39
Oklahoma	21-48	.438	7-16	.438	13-16	.813	14/17/31	16	13	23	1	4	29	33	62
at UALR	25-43	.581	4-9	.581	12-13	.923	2/15/17	20	17	17	4	7	43	23	66
Oklahoma	26-64	.406	13-34	.382	7-12	.583	7/16/23	22	17	17	3	10	34	38	72
at Duke (13)	32-66	.485	5-15	.333	23-30	.767	23/34/57	18	18	22	8	12	42	50	92
Oklahoma	21-61	.344	2-11	.344	20-29	.690	12/22/34	30	5	13	5	10	31	33	64
vs. Arkansas %	23-52	.442	3-15	.200	22-42	.524	11/29/40	22	9	16	7	8	37	34	71
Yale	20-62	.323	3-14	.214	11-25	.440	18/18/36	16	10	17	5	11	30	24	54
at Oklahoma	30-63	.476	2-14	.143	9-10	.900	15/30/45	23	16	21	2	10	42	29	71
West Virginia	23-62	.371	3-19	.371	11-20	.550	17/21/38	20	7	18	4	13	32	28	60
at Oklahoma	26-57	.456	6-17	.353	13-20	.650	14/30/44	19	14	21	3	9	34	37	71
Oklahoma	24-58	.414	4-13	.308	17-25	.680	15/22/37	9	8	12	2	8	30	39	69
at Kansas	23-52	.442	8-22	.364	3-3	1.000	7/23/30	19	16	21	5	8	28	29	57
Oklahoma	26-64	.481	6-17	.353	17-24	.708	13/26/39	23	10	15	4	7	45	30	75
at Texas Tech	18-63	.286	1-14	.071	21-28	.750	22/20/42	20	7	14	1	10	25	33	58
Texas (4)	17-65	.267	4-23	.174	21-27	.778	20/28/48	27	8	18	3	11	28	31	59
at Oklahoma	18-52	.346	5-18	.278	29-36	.806	9/33/42	21	8	15	3	8	31	39	70
Oklahoma	35-60	.583	9-15	.600	18-22	.818	12/25/37	16	21	20	3	11	50	47	97
at TCU	32-59	.542	12-25	.480	5-8	.480	5/16/21	19	19	17	4	11	43	38	81
Oklahoma State	22-60	.367	3-7	.429	7-14	.500	19/22/41	14	11	17	3	5	24	30	54
at Oklahoma	30-55	.545	6-16	.375	7-9	.778	5/23/28	13	11	11	5	9	36	37	73
Texas Tech	26-65	.400	7-25	.240	5-9	.556	13/28/41	25	13	19	5	8	26	38	64
at Oklahoma	21-53	.396	5-18	.278	23-35	.657	11/27/38	15	9	12	4	11	31	39	70
Oklahoma	29-70	.345	5-15	.333	18-23	.783	11/28/39	29	8	15	3	8	33	32/9**	81
at Texas (14)	33-76	.434	2-13	.154	16-24	.667	14/31/45	25	17	19	6	5	30	35/9/10*	84
Oklahoma	23-60	.383	4-17	.235	19-22	.864	15/18/33	26	14	21	1	8	23	46	69
at West Virginia	24-54	.444	4-16	.250	26-34	.765	17/24/41	25	14	22	6	13	32	46	78
Iowa State	23-57	.404	7-20	.404	13-18	.722	5/25/30	17	9	11	1	8	25	41	66
at Oklahoma	28-63	.444	9-27	.333	10-13	.769	12/33/45	21	16	15	5	4	38	37	75
Kansas State	21-48	.438	7-19	.368	9-12	.750	6/21/27	11	10	18	5	10	25	33	58
at Oklahoma	23-51	.451	8-17	.471	12-12	1.000	7/22/29	13	17	14	2	2	27	39	66
Oklahoma	24-66	.364	11-25	.440	7-13	.538	16/17/33	22	16	20	4	9	20	46	66
at Baylor (3)	35-61	.574	3-7	.429	16-23	.696	14/28/42	17	32	18	9	12	42	47	89
TCU	21-57	.368	3-18	.167	9-16	.563	12/21/33	12	8	20	4	14	26	27	54
at Oklahoma	31-65	.477	7-21	.333	8-9	.889	14/28/42	16	22	19	2	9	45	32	77
Oklahoma	25-62	.403	14-32	.438	12-19	.632	7/28/35	26	20	12	2	5	30	40/6*	76
at Iowa State	26-61	.426	9-25	.360	23-33	.697	14/33/47	17	13	13	3	6	41	29/14*	84
Oklahoma	23-52	.442	11-23	.478	16-27	.593	16/27/43	23	16	24	6	7	30	43	73
at Kansas State	22-57	.386	5-17	.294	15-22	.682	12/16/28	20	11	16	6	12	25	39	64
Baylor (3)	26-64	.406	2-7	.286	10-11	.909	13/29/42	22	10	10	10	5	27	37	64
at Oklahoma	22-57	.386	6-17	.353	18-24	.750	10/26/36	13	10	9	5	6	35	33	68
Kansas	22-56	.393	4-16	.250	17-18	.944	15/23/38	19	17	15	4	8	29	36	65
at Oklahoma	19-59	.322	1-12	.083	19-26	.731	19/19/38	16	9	13	3	3	25	33	58
Oklahoma	23-57	.404	3-17	.176	17-22	.773	7/28/35	24	6	12	4	8	19	47	66
at Oklahoma State	16-62	.258	4-13	.308	20-31	.645	20/32/52	20	5	17	3	7	20	36	56
West Virginia	20-55	.364	7-18	.389	8-14	.571	13/19/32	26	14	10	5	4	20	35	55
vs. Oklahoma ^	20-53	.377	4-12	.333	23-30	.767	15/25/40	16	11	9	2	1	34	33	67
Texas	18-43	.419	6-12	.500	17-23	.739	7/33/40	20	15	22	5	10	23	36	59
vs. Oklahoma ^	15-58	.259	7-26	.269	9-14	.643	13/21/34	22	10	18	1	8	20	26	46
Quinnipiac	23-66	.348	12-29	.414	26-33	.788	13/19/32	21	11	11	1	7	40	44	84
vs. Oklahoma &	40-72	.556	13-29	.448	18-24	.750	15/33/48	25	27	13	2	5	57	54	111
Oklahoma	28-72	.389	6-23	.261	14-19	.737	16/20/36	28	11	13	1	9	36	40	76
vs. Stanford (17) &	24-46	.522	8-17	.471	30-38	.789	8/31/39	21	10	20	7	5	32	54	86

- Paradise Jam (Virgin Islands) | % SEC/Big 12 Challenge (Little Rock, Ark.) | ^ Phillips 66 Big 12 Championships (Dallas, Texas) | & NCAA 1st/2nd Round

2014-15 INDIVIDUAL HIGHS

OKLAHOMA HIGHS

Points	30, Peyton Little vs. Texas (2/21/15)
Field Goals	10, Kaylon Williams vs. TCU (1/17/15)
	10, Kaylon Williams vs. Yale (12/30/14)
Field Goal Attempts	20, Peyton Little at Baylor (2/21/15)
FG Pct. (min. 5 made)	.875 (7-for-8), Kaylon Williams vs. Bradley (11/21/14)
3-Point Field Goals	8, Peyton Little at Kansas State (2/21/15)
3-Point FG Attempts	10, Peyton Little, four times; last vs. Texas (3/8)
3-Point FG Pct. (min. 4 made)	.800 (8-for-10), Peyton Little at Kansas State (2/21/15)
Free Throws	12, Maddie Manning vs. Texas (1/14/15)
Free Throw Attempts	14, Maddie Manning vs. Texas (1/14/15)
Free Throw Pct.	1.000 (10-for-10), Peyton Little vs. Kansas State (2/7/15)
Rebounds	12, Kaylon Williams at Kansas State (2/21/15)
	12, Kaylon Williams at TCU (1/17/15)
	12, Gabbi Ortiz vs. Kentucky (11/28/14)
Assists	8, Gabbi Ortiz at Iowa State (2/17/15)
	8, Gabbi Ortiz vs. Yale (12/30/14)
	8, Gabbi Ortiz at Duke (12/17/14)
Turnovers	7, Sharane Campbell-Olds vs. Illinois (11/29/14)
	7, Gabbi Ortiz vs. Kentucky (11/28/14)
Blocked Shots	3, Maddie Manning vs. Oklahoma State (1/19/15)
	3, Vionise Pierre-Louis vs. Arkansas (12/21/14)
	3, McKenna Treece vs. Bradley (11/21/14)
Steals	4, Peyton Little vs. Texas Tech (1/24/15)
	4, Peyton Little at TCU (1/17/15)

OPPONENT HIGHS

Points	27, Kelsey Plum, Washington (11/14/14)
Field Goals	15, Kelsey Plum, Washington (11/14/14)
Field Goal Attempts	27, Kelsey Plum, Washington (11/14/14)
FG Pct. (min. 5 made)	.875 (7-for-8), Alisia Jenkins, USF (11/27/14)
3-Point Field Goals	5, Brynna Williamson, Iowa State (2/17/15)
	5, Zahna Medley, TCU (1/17/15)
	5, Kindred Wesemann, Kansas State (2/7/15)
	5, Kyley Simmons, Illinois (11/29/14)
3-Point Field Goal Attempts	10, Bria Holmes, West Virginia (1/4/15)
	10, Shauna Long, Lamar (11/18/14)
3-Point FG Pct. (min. 4 made)	.714 (5-for-7), Zahna Medley, TCU (1/17/15)
Free Throws	12, Kelsey Plum, Washington (11/14/14)
Free Throw Attempts	20, Kelsey Brooks, Arkansas (12/21/14)
Free Throw Pct.	1.000 (6-for-6), Brianah Ramos, Quinnipiac (3/21/15)
	1.000 (6-for-6), Lauren Aldridge, Kansas (2/28/15)
	1.000 (7-for-7), Courtney Williams, USF (11/27/14)
	1.000 (12-for-12), Kelsey Plum, Washington (11/14/14)
Rebounds	20, Elizabeth Williams, Duke (12/13/14)
Assists	17, Niya Johnson, Baylor (2/21/15)
Turnovers	8, Jazmine Davis, Washington (11/14/14)
Blocked Shots	7, Sune Agbuke, Baylor (2/25/15)
Steals	7, Ivory Crawford, Illinois (11/29/15)

OKLAHOMA'S TOP INDIVIDUAL PERFORMANCES

POINTS

30.....	Peyton Little at Kansas State (2/21/15)
26.....	Sharane Campbell-Olds vs. Washington (11/14/14)
25.....	Kaylon Williams at TCU (1/17/15)
24.....	Gioya Carter at TCU (1/17/15)
24.....	Gioya Carter vs. West Virginia (1/4/15)
23.....	Kaylon Williams vs. Washington (1/14/14)
22.....	Peyton Little at Baylor (2/11/15)
22.....	Peyton Little at Iowa State (2/17/15)
22.....	Gioya Carter vs. Texas Tech (1/24/15)
22.....	Kaylon Williams at Stanford (3/23/15)
21.....	Peyton Little vs. TCU (2/14/15)
21.....	Nicole Kornet vs. Kentucky (11/28/14)

REBOUNDS

12.....	Kaylon Williams at Kansas State (2/21/15)
12.....	Kaylon Williams at TCU (1/17/15)
12.....	Gabbi Ortiz vs. Illinois (11/29/14)
11.....	Kaylon Williams vs. Kansas State (2/14/15)
11.....	Kaylon Williams vs. Kansas (1/7/15)
11.....	Sharane Campbell-Olds vs. Kansas (1/7/15)

ASSISTS

8.....	Gabbi Ortiz at Iowa State (2/17/15)
8.....	Gabbi Ortiz vs. Yale (12/30/14)
8.....	Gabbi Ortiz at Duke (12/17/14)
7.....	Peyton Little vs. Lamar (11/18/14)
7.....	Gabbi Ortiz vs. Lamar (11/18/14)
6.....	Gabbi Ortiz vs. USF (11/27/14)
6.....	Gioya Carter vs. Bradley (11/21/14)

BLOCKED SHOTS

3.....	Vionise Pierre-Louis at Oklahoma State (3/2/15)
3.....	Kaylon Williams at Baylor (2/11/15)
3.....	Maddie Manning vs. Oklahoma State (1/19/15)
3.....	Vionise Pierre-Louis at Arkansas (12/21/14)
3.....	McKenna Treece vs. Bradley (11/21/14)

STEALS

4.....	Gioya Carter at Stanford (3/23/15)
4.....	Kaylon Williams vs. Texas (3/8/15)
4.....	Peyton Little vs. Texas Tech (1/24/15)
4.....	Peyton Little at TCU (1/17/15)

3-POINT FIELD GOALS

8.....	Peyton Little at Kansas State (2/21/15)
6.....	Gioya Carter at TCU (1/17/15)
5.....	Peyton Little at Baylor (2/11/15)
5.....	Peyton Little vs. TCU (2/14/15)
5.....	Sharane Campbell-Olds at Iowa State (2/17/15)
5.....	Gabbi Ortiz vs. Illinois (11/29/14)

FREE THROW MAKES

12.....	Maddie Manning vs. Texas (1/14/15)
10.....	Peyton Little vs. Kansas State (2/7/15)
9.....	Peyton Little vs. Texas (1/14/15)
7.....	Sharane Campbell-Olds vs. Kansas (2/28/15)
7.....	Nicole Kornet vs. Arkansas (12/21/14)
7.....	Sharane Campbell-Olds vs. Kentucky (11/28/14)

FRIDAY'S BOX SCORE

Official Basketball Box Score -- Game Totals -- Final Statistics

Winthrop vs Oklahoma

11/13/15 7 p.m. CT at Norman, Okla. (Lloyd Noble Center)

Winthrop 48 • 0-1

##	Player		Total		3-Ptr	Rebounds			PF	TP	A	TO	Blk	Stl	Min
			FG-FGA	FG-FGA	FT-FTA	Off	Def	Tot							
14	WHITAKER, Arianne	f	7-8	0-0	0-4	1	3	4	3	14	0	2	3	1	38
01	KILPATRICK, Aliyah	g	3-15	0-1	0-0	1	1	2	3	6	3	3	0	1	38
02	BANKS, Jimecheia	g	1-3	0-2	0-0	1	4	5	4	2	3	3	0	1	18
15	JACKSON, Naima	g	0-1	0-0	2-2	0	0	0	1	2	0	1	0	1	14
33	WILLIAMS, Erica	g	5-15	0-2	1-3	1	4	5	3	11	0	6	0	3	31
05	JACKSON, Nuba		2-6	1-3	2-2	0	2	2	1	7	0	5	0	6	30
21	BOYD, Brianna		1-1	0-0	0-0	0	2	2	2	2	0	1	1	2	14
23	ROGERS, Ronata		0-0	0-0	0-0	0	0	0	0	0	0	0	0	0	1
44	MBAMALU, Ezinne		2-5	0-0	0-0	0	0	0	1	4	0	0	0	1	16
Team						2	0	2							
Totals			21-54	1-8	5-11	6	16	22	18	48	6	21	4	16	200

FG % 1st Half: 10-27 37.0% 2nd half: 11-27 40.7% Game: 21-54 38.9%
 3FG % 1st Half: 0-3 0.0% 2nd half: 1-5 20.0% Game: 1-8 12.5%
 FT % 1st Half: 0-0 0.0% 2nd half: 5-11 45.5% Game: 5-11 45.5%

Deadball Rebounds 2

Oklahoma 78 • 1-0

##	Player		Total		3-Ptr	Rebounds			PF	TP	A	TO	Blk	Stl	Min
			FG-FGA	FG-FGA	FT-FTA	Off	Def	Tot							
42	Williams, Kaylon	f	4-7	0-0	5-6	2	5	7	2	13	0	1	1	0	21
10	Little, Peyton	g	7-13	3-8	0-0	0	1	1	1	17	4	0	0	3	27
21	Ortiz, Gabbi	g	0-2	0-2	0-0	0	1	1	0	0	2	7	0	3	23
23	Manning, Maddie	g	3-5	1-1	0-0	1	0	1	0	7	4	1	2	1	19
32	Williams, LaNesia	g	3-9	0-0	0-0	2	2	4	1	6	2	4	0	1	23
00	Pierre-Louis, Vionise		4-5	0-0	2-2	2	3	5	2	10	1	0	0	0	11
02	Edwards, T'ona		1-1	0-0	2-4	1	5	6	1	4	5	4	0	1	17
11	Wyatt, Derica		6-8	4-6	0-0	0	1	1	1	16	2	1	0	2	17
12	Penzo, Gileysa		0-1	0-0	1-4	0	3	3	2	1	1	1	0	2	17
22	Kellogg, Shaya		2-4	0-0	0-0	2	4	6	1	4	0	0	0	0	18
24	Odimgbe, Ijeoma		0-1	0-0	0-0	1	1	2	0	0	0	1	0	0	7
Team						0	5	5			1				
Totals			30-56	8-17	10-16	11	31	42	11	78	21	21	3	13	200

FG % 1st Half: 14-28 50.0% 2nd half: 16-28 57.1% Game: 30-56 53.6%
 3FG % 1st Half: 5-11 45.5% 2nd half: 3-6 50.0% Game: 8-17 47.1%
 FT % 1st Half: 3-4 75.0% 2nd half: 7-12 58.3% Game: 10-16 62.5%

Deadball Rebounds 5

Officials: Melissa Barlow, Brian Hall, Cheryl Flores
 Technical fouls: Winthrop-None. Oklahoma-None.
 Attendance: 3713
 Est. Attendance: 2558

Score by periods	1st	2nd	3rd	4th	Total
Winthrop	10	10	16	12	48
Oklahoma	19	17	25	17	78

	In Paint	Off T/O	2nd Chance	Fast Break	Bench
Points WIN	28	10	2	2	13
OU	42	38	11	18	35

Last FG - WIN 4th-01:41, OU 4th-05:58.
 Largest lead - WIN None, OU by 38 4th-05:35.
 WIN led for 00:00. OU led for 36:58. Game was tied for 02:35.

Score tied - 0 times.
 Lead changed - 0 times.

LAST YEAR VS. NORTH TEXAS

Official Basketball Box Score -- Game Totals -- Final Statistics

Oklahoma vs North Texas

12/07/14 11:00 AM at Denton, TX (Super Pit)

Oklahoma 68 • 5-2

##	Player		Total			3-Ptr			Rebounds			PF	TP	A	TO	Blk	Stl	Min
			FG-FGA	FG-FGA	FT-FTA	FG-FGA	FG-FGA	FT-FTA	Off	Def	Tot							
42	Williams, Kaylon	f	5-7	0-0	0-0	0-0	2	2	4	1	10	3	6	0	0	20		
10	Little, Peyton	g	2-7	1-5	6-8	0-0	0	7	7	0	11	1	4	0	2	25		
21	Ortiz, Gabbi	g	1-5	0-2	0-0	0-0	2	1	3	1	2	1	5	1	3	24		
24	Campbell, Sharane	g	5-10	0-2	0-1	0-0	0	2	2	4	10	1	2	0	3	25		
32	Williams, LaNesia	g	3-7	1-2	2-2	1-1	1	1	2	3	9	4	4	0	3	24		
00	Pierre-Louis, Vionise		2-4	0-0	0-0	0-0	0	3	3	2	4	1	0	1	1	10		
01	Kornet, Nicole		5-10	3-7	1-3	2-4	2	4	6	2	14	0	1	0	0	22		
02	Edwards, T'ona		0-2	0-1	0-0	0-0	0	3	3	0	0	4	4	0	0	16		
11	Wyatt, Derica		0-3	0-3	0-0	0-0	0	2	2	0	0	2	0	0	0	11		
13	Ritchie, Whitney		0-0	0-0	0-0	0-0	0	0	0	0	0	0	0	0	0	2		
22	Kellogg, Shaya		0-1	0-1	0-0	0-0	0	0	0	0	0	0	0	0	1	2		
25	Carter, Gioya		1-1	0-0	4-4	0-0	0	4	4	2	6	1	3	2	0	11		
30	Treece, McKenna		1-1	0-0	0-0	1-1	1	1	2	2	2	0	1	0	0	8		
Team							1	3	4				1					
Totals			25-58	5-23	13-18		9	33	42	17	68	18	31	4	13	200		

FG % 1st Half: 15-33 45.5% 2nd half: 10-25 40.0% Game: 25-58 43.1%
 3FG % 1st Half: 3-13 23.1% 2nd half: 2-10 20.0% Game: 5-23 21.7%
 FT % 1st Half: 7-9 77.8% 2nd half: 6-9 66.7% Game: 13-18 72.2%

Deadball
Rebounds
2

North Texas 39 • 0-6

##	Player		Total			3-Ptr			Rebounds			PF	TP	A	TO	Blk	Stl	Min
			FG-FGA	FG-FGA	FT-FTA	FG-FGA	FG-FGA	FT-FTA	Off	Def	Tot							
03	WYNN, Briesha	f	0-3	0-0	0-0	0-0	0	2	2	4	0	0	4	0	0	11		
05	JETER, Ebonyey	f	2-6	0-1	1-2	2-4	2	4	6	4	5	0	1	1	1	31		
23	TAC, Acheil	f	2-5	0-0	0-0	1-4	1	4	5	3	4	0	4	0	1	26		
14	ADAMS, Candice	g	2-8	0-3	1-2	0-4	0	4	4	2	5	0	7	0	2	22		
22	DAWKINS, BreAnna	g	3-10	0-0	3-6	3-2	3	2	5	1	9	2	5	0	1	32		
02	JONES, Teadra		2-3	0-1	2-2	2-1	2	1	3	0	6	0	2	0	2	17		
10	WILLIAMS, Kasiney		0-6	0-0	0-0	0-1	0	1	1	1	0	1	7	0	0	15		
20	ELLISON, Terra		1-2	0-0	0-0	0-1	0	1	1	1	2	0	0	0	1	5		
21	DARRINGTON, JohVonna		0-4	0-0	3-4	1-3	1	3	4	3	3	0	5	0	1	17		
24	FRIERSON, Bria		0-0	0-0	0-0	0-0	0	0	0	1	0	0	1	0	0	3		
32	WOMACK, Megan		0-0	0-0	0-0	0-0	0	0	0	0	0	0	0	0	0	2		
34	DAVIS, Kiara		2-5	1-3	0-0	0-0	0	0	0	1	5	0	1	0	0	19		
Team							0	5	5									
Totals			14-52	1-8	10-16		9	27	36	21	39	3	37	1	9	200		

FG % 1st Half: 5-22 22.7% 2nd half: 9-30 30.0% Game: 14-52 26.9%
 3FG % 1st Half: 1-3 33.3% 2nd half: 0-5 0.0% Game: 1-8 12.5%
 FT % 1st Half: 5-6 83.3% 2nd half: 5-10 50.0% Game: 10-16 62.5%

Deadball
Rebounds
2

Officials: Kelly Johnson, Michol Murray, Scott Yarbrough
 Technical fouls: Oklahoma-None. North Texas-None.
 Attendance: 1937

Score by periods	1st	2nd	Total
Oklahoma	40	28	68
North Texas	16	23	39

ROSTERS

NUMERICAL

No.	Name	Pos.	Cl.	Ht.	Hometown (Last School)
0	Vionise Pierre-Louis	C	So.	6-4	Lake Worth, Fla. (Grandview Prep)
2	T'ona Edwards	G	Jr.	5-5	Spencer, Okla. (Northeast Academy)
10	Peyton Little	G	RS-Jr.	5-11	Abilene, Texas (Texas A&M)
11	Derica Wyatt	G	Jr.	5-10	Brentwood, Tenn. (Franklin Road Academy)
12	Gileysa Penzo	G	RS-Fr.	5-9	San Juan, Puerto Rico (Montverde Academy [Fla.])
21	Gabbi Ortiz	G	So.	5-9	Racine, Wis. (The Prairie School)
22	Shaya Kellogg	F	Jr.	6-2	Ames, Iowa (Ames)
23	Maddie Manning	G	RS-Jr.	6-2	Ankeny, Iowa (Ankeny)
24	Ijeoma Odimgbe	F	Fr.	6-4	Savannah, Ga. (Johnson)
25	Gioya Carter	G	Jr.	5-9	Midwest City, Okla. (Carl Albert)
30	McKenna Treece	C	So.	6-4	St. Peters, Mo. (Incarnate Word [Mo.] Academy)
32	LaNesia Williams	G	So.	5-7	Oklahoma City, Okla. (Northeast Academy)
42	Kaylon Williams	F	RS-Sr.	6-3	Midwest City, Okla. (Midwest City)

ALPHABETICAL

No.	Name	Pos.	Cl.	Ht.	Hometown (Last School)
25	Gioya Carter	G	Jr.	5-9	Midwest City, Okla. (Carl Albert)
2	T'ona Edwards	G	Jr.	5-5	Spencer, Okla. (Northeast Academy)
22	Shaya Kellogg	F	Jr.	6-2	Ames, Iowa (Ames)
10	Peyton Little	G	RS-Jr.	5-11	Abilene, Texas (Texas A&M)
23	Maddie Manning	G	RS-Jr.	6-2	Ankeny, Iowa (Ankeny)
24	Ijeoma Odimgbe	F	Fr.	6-4	Savannah, Ga. (Johnson)
21	Gabbi Ortiz	G	So.	5-9	Racine, Wis. (The Prairie School)
12	Gileysa Penzo	G	RS-Fr.	5-9	San Juan, Puerto Rico (Montverde Academy [Fla.])
0	Vionise Pierre-Louis	C	So.	6-4	Lake Worth, Fla. (Grandview Prep)
30	McKenna Treece	C	So.	6-4	St. Peters, Mo. (Incarnate Word [Mo.] Academy)
42	Kaylon Williams	F	RS-Sr.	6-3	Midwest City, Okla. (Midwest City)
32	LaNesia Williams	G	So.	5-7	Oklahoma City, Okla. (Northeast Academy)
11	Derica Wyatt	G	Jr.	5-10	Brentwood, Tenn. (Franklin Road Academy)

STAFF

Head Coach: Sherri Coale (Oklahoma Christian '87)

Assistant Coaches:

Jan Ross (Oklahoma Christian, '86)

Pam DeCosta (Metropolitan State, '86)

Chad Thrailkill (Southern Nazarene, '93)

Director of Operations:

Guy Austin

Strength and Conditioning Coach:

Brett Frantz

Video Coordinator:

Ethan Burton

Athletics Trainer:

Carolynn Loon

PRONUNCIATION GUIDE

Gioya Carter – JOY-uh

T'ona Edwards – TEE-on-uh

Shaya Kellogg – SHAY-uh

Ijeoma Odimgbe – e-JO-muh o-DIM-way

Gileysa Penzo – jill-LAY-suh

Vionise Pierre-Louis – vee-uh-NEECE

LaNesia Williams – la-NEE-see-uh

Kaylon Williams – KAY-luhn

Derica Wyatt – DARE-eh-kuh

PHOTO ROSTER



0 VIONISE PIERRE-LOUIS
6-4, So., Center
Lake Worth, Fla.



2 T'ONA EDWARDS
5-5, Jr., Guard
Spencer, Okla.



10 PEYTON LITTLE
5-11, RS-Jr., Guard
Abilene, Texas



11 DERICA WYATT
5-10, Jr., Guard
Brentwood, Tenn.



12 GILEYSA PENZO
5-9, RS-Fr., Guard
San Juan, Puerto Rico



21 GABBI ORTIZ
5-9, So., Guard
Racine, Wis.



22 SHAYA KELLOGG
6-2, Jr., Forward
Ames, Iowa



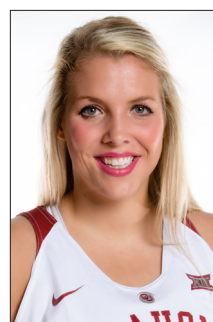
23 MADDIE MANNING
6-2, RS-Jr., Guard
Ankeny, Iowa



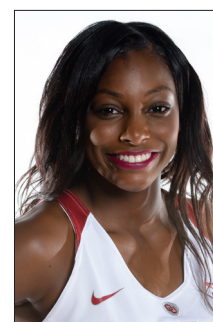
24 IJEOMA ODIMGBE
6-4, Fr., Forward
Savannah, Ga.



25 GIOYA CARTER
5-9, Jr., Guard
Midwest City, Okla.



30 MCKENNA TREECE
6-4, So., Center
St. Peters, Mo.



32 LANESIA WILLIAMS
5-7, So., Guard
Oklahoma City, Okla.



42 KAYLON WILLIAMS
6-3, RS-Sr., Forward
Midwest City, Okla.



SHERRI COALE
Head Coach
20th Year at Oklahoma



JAN ROSS
Assistant Coach
20th Year at Oklahoma



PAM DECASTA
Assistant Coach
Seventh Year at Oklahoma



CHAD THRAILKILL
Assistant Coach
14th Year at Oklahoma



GUY AUSTIN
Director of Operations
10th Year at Oklahoma

OKLAHOMA SOONERS

2015-16 Record: 1-0, 0-0 BIG 12

Head Coach: Sherri Coale
Assistant Coach: Jan Ross
Assistant Coach: Pam DeCosta
Assistant Coach: Chad Thrailkill

0	Vionise Pierre-Louis C, 6-4, So. Lake Worth, Fla. (Grandview Prep)	PPG 10.0 RPG 5.0 BPG 0.0 FG .800 3FG .000 FT .000 Career 4.2 3.5 0.7 .510 .000 .524 Season: PTS: 10 Career: PTS: 15 REB: 5 REB: 9 BLK: 1 3FG: 3	<ul style="list-style-type: none"> Led OU in blocked shots (22) in 14-15 Finished strong with career-high 15 points and nine rebounds vs. Quinnipiac in NCAA Tournament
2	T'ona Edwards G, 5-5, Jr. Spencer, Okla. (Northeast Academy)	PPG 4.0 RPG 6.0 APG 5.0 FG 1.000 3FG .000 FT .500 Career 1.4 1.5 1.5 .351 .136 .650 Season: PTS: 4 Career: PTS: 9 REB: 6 REB: 6 AST: 5 AST: 8	<ul style="list-style-type: none"> Backup PG that played in 32 games Scored career-high eight points vs. West Virginia Tied career-high with six rebounds vs. Winthrop
10	Peyton Little G, 5-11, RS-Jr. Abilene, Texas (Texas A&M)	PPG 17.0 RPG 1.0 APG 4.0 FG .538 3FG .375 FT .000 Career 12.7 3.2 1.8 .418 .345 .786 Season: PTS: 17 Career: PTS: 30 REB: 1 REB: 10 3FG: 3 3FG: 8	<ul style="list-style-type: none"> Led OU, ninth in Big 12 with 12.6 ppg in 14 Game-high 17 points vs. Winthrop (11/4) 24 double figure scoring games at OU Career-high 30 points at Kansas State
11	Derica Wyatt G, 5-10, Jr. Brentwood, Tenn. (Franklin Road Academy)	PPG 16.0 RPG 1.0 APG 2.0 FG .750 3FG .667 FT .000 Career 3.2 0.9 0.5 .368 .341 .571 Season: PTS: 16 Career: PTS: 23 REB: 1 REB: 4 3FG: 4 3FG: 7	<ul style="list-style-type: none"> Started at guard vs. SWOSU (11/4) 16 points, 4 3FGM vs. Winthrop (11/13) 63 of 74 FGA were 3-pointers in 14-15
12	Gileysa Penzo G, 5-10, Jr. San Juan, Puerto Rico (Monteverde [Fla.] Academy)	PPG 1.0 RPG 3.0 APG 1.0 FG .000 3FG .000 FT .250 Career 1.0 3.0 1.0 .000 .000 .250 Season: PTS: 1 Career: PTS: 1 REB: 3 REB: 3 3FG: 0 3FG: 0	<ul style="list-style-type: none"> Scored one point in first career action vs. Winthrop Played 15 minutes and scored five points in exhibition win (11/4) Missed last season due to injury
21	Gabbi Ortiz G, 5-9, So. Racine, Wis. (The Prairie School)	PPG 0.0 RPG 1.0 APG 2.0 FG .000 3FG .000 FT .000 Career 7.9 3.6 3.5 .356 .329 .702 Season: PTS: 0 Career: PTS: 16 REB: 1 REB: 12 AST: 8 AST: 8	<ul style="list-style-type: none"> All-Big 12 Preseason First Team Started all 33 games in 14-15 Led OU with 3.5 apg last season
22	Shaya Kellogg F, 6-2, Jr. Ames, Iowa (Ames)	PPG 4.0 RPG 6.0 APG 0.0 FG .500 3FG .000 FT .000 Career 1.1 1.7 0.1 .409 .222 .609 Season: PTS: 4 Career: PTS: 5 REB: 6 REB: 7 AST: 0 3FG: 1	<ul style="list-style-type: none"> Reserve forward that played in six games last season Six rebounds vs. Winthrop (11/13)
23	Maddie Manning G, 6-2, RS-Jr. Ankeny, Iowa (Ankeny)	PPG 7.0 RPG 1.0 APG 4.0 FG .600 3FG 1.000 FT .000 Career 5.0 2.3 1.2 .479 .451 .571 Season: PTS: 7 Career: PTS: 15 REB: 1 REB: 8 3FG: 1 3FG: 3	<ul style="list-style-type: none"> Played 27 minutes against SWOSU, finishing with 15 points/nine rebounds Averaged 13.9 minutes per game in 14-15 Career-high 15 points vs. Quinnipiac in NCAA Tournament
24	Ijeoma Odingbe F, 6-4, Fr. Savannah, Ga. (Johnson)	PPG 0.0 RPG 2.0 APG 0.0 FG .000 3FG .000 FT .000 Career 0.0 2.0 0.0 .000 .000 .000 Season: PTS: 0 Career: PTS: 0 REB: 1 REB: 1 BLK: 0 BLK: 0	<ul style="list-style-type: none"> OU's lone true freshman Scored 13 points vs. SWOSU (11/4) Made debut vs. Winthrop (11/13) Nickname: "EJ"
25	Gioya Carter G, 5-9, Jr. Midwest City, Okla. (Carl Albert)	PPG 7.8 RPG 3.3 APG 1.7 FG .386 3FG .336 FT .721 Career PTS: 24 REB: 9 3FG: 6	<ul style="list-style-type: none"> DNP vs. Winthrop Preseason All-Big 12 HM All-Big 12 Second Team (14-15) Led OU in FT% (.793)
30	McKenna Treece C, 6-4, So. St. Peters, Mo. (Incarnate Word Academy)	PPG 3.3 RPG 1.9 BPG 0.4 FG .481 3FG .000 FT .792 Career PTS: 14 REB: 8 BLK: 3	<ul style="list-style-type: none"> Out until Dec. due to injury Played in 29 games last season Career-high 14 pts vs. Quinnipiac 11 pts/3 blks against Bradley
32	LaNesia Williams G, 5-7, So. Oklahoma City, Okla. (Northeast Academy)	PPG 6.0 RPG 4.0 APG 2.0 FG .333 3FG .000 FT .000 Career 3.7 1.3 0.9 .387 .317 .615 Season: PTS: 6 Career: PTS: 14 REB: 4 REB: 8 AST: 2 3FG: 4	<ul style="list-style-type: none"> Appeared in 31 of 33 games in 14-15 Team-high six steals vs. SWOSU (11/4) Six career starts
42	Kaylon Williams F, 6-3, RS-Sr. Midwest City, Okla. (Midwest City)	PPG 13.0 RPG 7.0 BPG 1.0 FG .571 3FG .000 FT .833 Career 8.1 5.4 0.6 .545 .000 .663 Season: PTS: 13 Career: PTS: 25 REB: 7 REB: 16 BLK: 1 BLK: 3	<ul style="list-style-type: none"> Fourth in NCAA with .596 FG% last year OU's leading rebounder in 14-15 (6.6 rpg) Second-leading scorer (12.2 ppg) Six double-doubles in 14-15