



UTSA

2015-16 women's basketball

Women's Basketball Contact: Zena Rex | zena.rex@utsa.edu | (956) 739-4878

GAME INFORMATION

TV/VIDEO:

North Texas All-Access

RADIO/AUDIO:

goUTSA.com | Stu Paul (play-by-play)

LIVE STATS:

goUTSA.com

SOCIAL MEDIA:

Twitter - @utsawbb

Facebook - /UTSA Women's Basketball

Instagram - @utsaathletics

2015-16 Schedule

October

31 Trinity# W, 59-50

November

8 St. Edward's# W, 81-50

14 at Texas (LHN) L, 53-90

21 at Abilene Christian L, 60-79

UTSA Thanksgiving Classic - San Antonio, Texas

27 Illinois State W, 77-51

29 Houston Baptist W, 79-50

December

3 at Texas State L, 64-72

13 at Oklahoma (FOX Sports) L, 41-80

15 Howard Payne W, 106-65

19 Texas A&M-Kingsville W, 88-51

21 UT Arlington L, 47-51

UTSA Holiday Classic - San Antonio, Texas

28 Texas Southern L, 47-51

30 Bowling Green Canceled

January

1 at North Texas * 2 p.m.

3 at Rice * 2 p.m.

7 UAB * 7 p.m.

9 Middle Tennessee * 2 p.m.

17 at UTEP * 2 p.m.

21 at FIU * 6 p.m.

23 at Florida Atlantic * 4 p.m.

28 Louisiana Tech * 7 p.m.

30 Southern Miss * 2 p.m.

February

4 at WKU * 7 p.m.

6 at Marshall * 12 p.m.

11 Florida Atlantic * 7 p.m.

13 FIU * 1 p.m.

18 at Louisiana Tech * 6:30 p.m.

20 at Southern Miss * 4 p.m.

25 Charlotte * 7 p.m.

27 Old Dominion * 2 p.m.

March

3 UTEP * 7 p.m.

8-12 C-USA Basketball Championships TBA

- Denotes exhibition game

* - Denotes Conference USA game

GAME 11

DENTON, TEXAS | THE SUPER PIT



UTSA ROADRUNNERS (4-6, 0-0 CONFERENCE USA)

Head coach: Lubomyr Lichonczak (Idaho, '76)

Record at UTSA: 34-38 | Career record: 185-189



NORTH TEXAS MEAN GREEN (5-5, 0-0 CONFERENCE USA)

Head coach: Jalie Mitchell (North Texas, '02)

Record at NT: 5-5 | Career record: Same

SERIES: North Texas leads the series 14-9. UTSA has won the last three meetings.

LAST MEETING: March 7, 2014 in Denton, Texas (UTSA 57, North Texas 54)

UTSA AT A GLANCE: UTSA is coming off a tough 51-47 loss to Texas Southern on Monday. The Roadrunners made up some ground in the second quarter but ultimately fell in the end. No player reached double figures but were led by Kasia Kiejdrowska and Alexis Dukes' nine points. Tesha Smith and Akunna Elonu combined for 21 rebounds with 11 and 10 respectively. Smith continues to lead the Roadrunners' season box averaging 12.8 points per game, to go with a team-best 8.5 caroms per night. Elonu adds 8.5 points and 5.9 rebounds per night - both of which rank second on the team. As a team, UTSA is averaging 65.9 points per game and is out-grabbing its opponents on the glass by 3.1 boards per outing (41.9-38.8). The Roadrunners are also holding opponents to 34.6 percent shooting, which ranks 32nd in the NCAA.

NORTH TEXAS AT A GLANCE: North Texas welcomes the Roadrunners with a 5-5 overall record. Its last regularly scheduled non-conference game against Oklahoma Panhandle State was canceled due to weather, similar to the Roadrunners' final non-conference tilt with Bowling Green. The Mean Green are coming off a 62-55 win over Incarnate and are winners of its last two games. NT has a pair of players averaging double figures with Acheil Tac leading the way with 10.9 points and 7.9 rebounds per game. Candice Adams adds 10.8 points per night and a team second-best 24 assists. As a team, NT is shooting 39.9 percent from the field and firing 35.6 percent from 3-point range, which is best for 49th in the NCAA.

UP NEXT: UTSA will continue with its conference-opening road trip as the team heads to Houston to take on Rice on Sunday, Jan. 3, at 2 p.m. The Roadrunners will then return to the Convocation Center to host UAB and Middle Tennessee the following weekend.

UTSA PROJECTED STARTERS (BASED OFF OF LAST GAME)



5-9 • F • Sr.

#21 Elonu

PPG - 8.5
RPG - 5.9
APG - 0.6
FG% - 50.8
3FG% - 18.8
FT% - 73.7



6-0 • G • So.

#31 Heineman

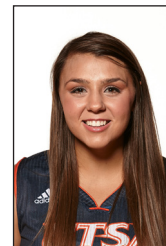
PPG - 7.2
RPG - 2.2
APG - 1.7
FG% - 37.5
3FG% - 41.7
FT% - 72.7



5-6 • G • Fr.

#3 Dukes

PPG - 7.6
RPG - 2.4
APG - 2.3
FG% - 38.0
3FG% - 25.0
FT% - 64.3



6-1 • C • Gr.

#23 Thornton

PPG - 3.8
RPG - 3.2
APG - 0.6
FG% - 48.6
3FG% - 0.0
FT% - 44.4



5-10 • G/F • Sr.

#12 Mitchell-Cole

PPG - 8.0
RPG - 4.6
APG - 1.3
FG% - 38.0
3FG% - 29.4
FT% - 56.5

QUICK FACTS

General Information

Name	The University of Texas at San Antonio
Location	San Antonio, Texas
Founded	1969
Enrollment	28,628 (24,342 undergraduate)
Nickname	Roadrunners
School Colors	Navy Blue, White and Orange
Home Arena	Convocation Center / 2,650
Affiliation	Division I
Conference	Conference USA
President	Dr. Ricardo Romo
Director of Athletics	Lynn Hickey
Athletic Department Phone	210-458-4161

Coaching Staff

Head Coach	Lubomyr Lichonczak (Idaho, '78)
Record at UTSA	34-38 (third season)
Career record	185-189 (14th season)
Associate Head Coach	Kristen Holt
Assistant Coach	Nicole Dunson
Assistant Coach	Ela Mukosiej
Director of Operations	Emily Sherman
Athletic Trainer	Brenna Ellis

Team Information

2014-15 overall record	16-15
2014-15 Conference USA record	11-7 (14th)
Final ranking	N/A
Starters R/L	2/3
Letter winners R/L	8/5
Newcomers	5
Key returners	A. Elonu, T. Smith
Key Losses	Kamra King
Key newcomers	K. Kiejdrowska, A. Dukes, S. Anastasieska

Women's Basketball History

First year	1981-82
All-time record	487-487
NCAA Postseason appearances	2 (2008, 2009)
Last Tournament appearance	2009 (vs. Baylor; L, 87-82 (OT))
Southland Conference championships	3 (2003 regular season and 2009 (west division); 2008 tournament)

Athletics Communications

Assistant Director	Zena Rex (women's basketball contact)
Email	zena.rex@utsa.edu
Cell	(966) 739-4878
Facebook	/UTSA Women's Basketball
Twitter	@utsawbb
Instagram	@utsaathletics
Hashtag	#utsawbb #birdsup #CUSAWBK or #CUSA20

MEDIA

WE ARE UTSA | When referencing The University of Texas at San Antonio athletics, please use the acronym UTSA and the nickname Roadrunners. Please refrain from using Texas-San Antonio, UT-San Antonio, UT-SA or any other variation.

Media Coverage | The UTSA Athletics Communication Office assists members of the media with their coverage of all Roadrunners sports by providing player and coach interviews, feature ideas, pregame notes and updated statistics.

Interviews | All interviews with coaches and student-athletes must be arranged at least 24 hours in advance through women's basketball contact Zena Rex. Telephone interviews are available to the media on a "call-back" basis at a time that is convenient for the coach or student-athlete. Post-game interviews with coaches and student-athletes will be conducted in the media room following a 10-minute cooling off period.

Internet Radio Broadcasts | All of UTSA's games for the 2015-16 season are slated to be broadcast live (audio) on goUTSA.com this season. Video streaming (subscription required) will also be available for all home games.

LAST TIME OUT

SAN ANTONIO — UTSA and Texas Southern combined for 29 total blocks to set the NCAA record in blocked shots by both teams in a 59-44 loss for the Roadrunners Monday afternoon at the Convocation Center.

UTSA (4-6) sets its own record with blocks in a single-game with 16, surpassing its previous mark of 14 set back on Dec. 21, 2011 against then-UTPA. Texas Southern also matched a program record of blocks against with 13.

Matching another program record was Texas Southern's Kianna Vines as she totaled eight blocks matching the single-game record set last season by Middle Tennessee's Cheyenne Parker.

No Roadrunner reached double figures but Alexis Dukes and Kasia Kiejdrowska led the box score with nine points each. Tesha Smith and Akunna Elonu combined for 21 rebounds with 11 and 10 respectively.

UTSA worked its way from behind in the second quarter after trailing 14-12 at the end of the opening stanza. The Roadrunners trailed by as many as five at the 8:17 mark but followed with six straight points to lead 20-19 with 5:48 remaining.

The Roadrunners headed to the locker room with a 27-24 advantage and 12 team blocks. In the third quarter, UTSA surpassed its single-game record in blocks on Smith's block with 10 seconds left in the frame.

In the third quarter, Texas Southern (4-6) took a lead halfway through the period that was short-lived after a layup from Niaga Mitchell-Cole put UTSA back on top. A pair of free throws by TSU's Ladeyh Forte flipped the score and the Tigers regained its lead at 32-31 and never looked back. The Tigers also held the Roadrunners to four points in the third, which was the lowest score total his year.

TSU had two players in double-digit points with Brianna Sidney netting a game-high 19 points while Joyce Kennerson added 18.

2015-16 UTSA WOMEN'S BASKETBALL

UTSA Women's Basketball Roster

No.	Name	Pos.	Ht.	Yr.	Hometown (Previous School)
1	Kasia Kiejdrowska	F	6-0	Jr.	Gdynia, Poland (Mineral Area College)
2	Mathilde Hergott	G/F	5-10	Sr.	Lyon, France (Lycee Jean Mermoz)
3	Alexus Dukes	G	5-5	Fr.	Harker Heights, Texas (Harker Heights HS)
4	Crystal Chidomere	G	5-11	So.	Richmond, Texas (Bush HS)
5	Alana Heard	G	5-6	Jr.	Missouri City, Texas (Hightower HS)
11	Sara Anastasieska	G	5-11	Fr.	Sydney, NSW, Australia (Monte Sant Angelo Mercy College)
12	Niaga Mitchell-Cole	G/F	5-10	Sr.	San Antonio, Texas (Roosevelt HS)
21	Akunna Elonu	F	5-9	Sr.	Houston, Texas (Alief Elsik HS)
23	Dempsey Thornton	C	6-1	Gr.	Corpus Christi, Texas (King HS)
25	Taylor Williams	F	6-2	Jr.	Katy, Texas (Cinco Ranch HS)
30	Tesha Smith	C	6-1	Jr.	San Antonio, Texas (Wagner HS)
31	Carlie Heineman	G	6-0	So.	San Antonio, Texas (Brennan HS)
32	*Loryn Goodwin	G	5-9	Jr.	Houston, Texas (Butler)

Head Coach: Lubomyr Lichonczak (Third season | Idaho State, '78)

Associate Head Coach: Kristen Holt (Third season | Ohio, '72)

Assistant Coach: Nicole Dunson (Third season | UTSA, '05)

Assistant Coach: Ela Mukosiej (First season | Seton Hall '07)

Director of Operations: Emily Sherman (Fourth season | St. Norbert College, '09)

**Will sit out the 2015-16 season due to NCAA transfer rule*

PRONUNCIATION GUIDE

Kasia Kiejdrowska	caw-SHA key-DRO-ska
Mathilde Hergott	MAH-teeld AIR-got
Chidomere	chid-uh-meer
Sara Anastasieska	SAR-uh an-uh-stuh-see-es-ka
Niaga	nye-AH-juh
Akunna Elonu	AH-coon-uh EE-lawn-oo
Tesha	TEE-sha
Loryn	(pronounced like Lauren)
Lubomyr Lichonczak	LU-ba-meer li-KON-zack
Mukosiej	moo-COE-shay

ROSTER BREAKDOWN

...by Height

5-6	5-9	5-10	5-11
Alexus Dukes Alana Heard	Akunna Elonu Loryn Goodwin	Mathilde Hergott Niaga Mitchell-Cole	Crystal Chidomere Sara Anastasieska
6-0	6-1	6-2	
Carlie Heineman Kasia Kiejdrowska	Tesha Smith Dempsey Thornton	Taylor Williams	

...by Position

Guard	Forward	Center
Crystal Chidomere Alana Heard Carlie Heineman Sara Anastasieska	Akunna Elonu Taylor Williams Tesha Smith Guard/Forward Mathilde Hergott Niaga Mitchell-Cole	Tesha Smith Dempsey Thornton Kasia Kiejdrowska
Alexus Dukes Loryn Goodwin		

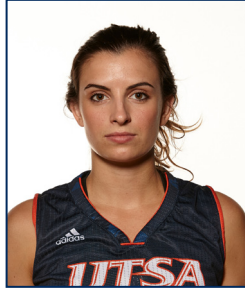
...by Year

Freshman	Junior	Senior
Sara Anastasieska Alexus Dukes	Loryn Goodwin Alana Heard Kasia Kiejdrowska	Akunna Elonu Mathilde Hergott Niaga Mitchell-Cole
Sophomore	Tesha Smith Taylor Williams	Dempsey Thornton
Crystal Chidomere Carlie Heineman		

2015-16 TV/MEDIA ROSTER



1 Kasia KIEJDROWSKA
F • 6-0 • Junior
Gdynia, Poland



2 Mathilde HERGOTT
G/F • 5-10 • Senior
Jonage, France



3 Alexis DUKES
G • 5-5 • Freshman
Harker Heights, Texas



4 Crystal CHIDOMERE
G • 5-11 • Sophomore
Richmond, Texas



5 Alana HEARD
G • 5-6 • Junior
Houston, Texas



11 Sara ANASTASIESKA
G • 5-11 • Freshman
Sydney, New South Wales, Australia



12 Niaga MITCHELL-COLE
G/F • 5-10 • Senior
San Antonio, Texas



21 Akunna ELONU
F • 5-9 • Senior
Houston, Texas



23 Dempsey THORNTON
C • 6-1 • Graduate
Corpus Christi, Texas



25 Taylor WILLIAMS
F • 6-2 • Junior
Katy, Texas



30 Tesha SMITH
C • 6-1 • Junior
San Antonio, Texas



31 Carlie HEINEMAN
G • 6-0 • Sophomore
San Antonio, Texas



32 Loryn GOODWIN
G • 5-9 • Junior
Cypress, Texas



lubomyr **LICHONCZAK**
Head coach
Third season



kristen **HOLT**
Associate Head Coach
Third season



nicole **DUNSON**
Assistant coach
Third season



ela **MUKOSIEJ**
Assistant coach
First season



emily **SHERMAN**
Director of Operations
Fourth season

2015-16 UTSA WOMEN'S BASKETBALL

Roadrunners Trends

At Convocation Center	4-2
On the road	0-4
At a neutral site	0-0
Last 5 games	2-3
Against ranked opponents	0-2
Longest win streak	2
Longest losing streak	2

Scoreboard

Up after the first quarter	4-0
Trailing after the first quarter	0-6
Tied after the first quarter	0-0
Up after the second quarter	4-1
Trailing after the second quarter	0-5
Tied after the second quarter	0-0
Up after the third quarter	4-0
Trailing after the third quarter	0-6
Tied after the third quarter	0-0
Overtime	0-0
In November	2-2
In December	2-4
In January	0-0
In February	0-0
In March	0-0
On Sundays	1-1
On Mondays	0-2
On Tuesdays	1-0
On Wednesdays	0-0
On Thursdays	0-1
On Fridays	1-0
On Saturdays	1-2
UTSA scores first	3-2
Opponents scores first	1-4
UTSA - More 3-pointers in game	0-1
Opp. - More 3-pointers in game	3-5
Tied	1-0
UTSA - More free throws in game	1-0
Opp. - More free throws in game	3-6
Tied	0-0
UTSA - More rebounds in game	4-2
Opp. - More rebounds in game	0-4
Tied	0-0
UTSA - More blocks in game	2-2
Opp. - More blocks in game	2-3
Tied	0-1
UTSA - More steals in game	3-2
Opp. - More steals in game	0-4
Tied	1-0
UTSA - More turnovers in game	1-3
Opp. - More turnovers in game	3-3
Tied	0-0

When UTSA...

Field Goals

Shoots 20-29%	0-3
Shoots 30-39%	0-3
Shoots 40-49%	0-0
Shoots 50-59%	4-0
Shoots 60-69%	0-0

Three-Point Field Goals

Shoots 0-19%	0-1
Shoots 20-29%	2-3
Shoots 30-39%	0-2
Shoots 40-49%	1-0
Shoots 50-59%	1-0
Shoots 60-69%	0-0

Free Throws

Shoots 30-39%	0-0
Shoots 40-49%	0-0
Shoots 50-59%	1-3
Shoots 60-69%	2-2
Shoots 70-79%	0-1
Shoots 80-89%	1-0

Scored less than 49 points	0-3
Scores between 50-59 points	0-1
Scores between 60-69 points	0-2
Scores between 70-79 points	2-0
Scores more than 80 points	2-0

Allows less than 49 points	0-0
Allows between 50-59 points	3-2
Allows between 60-69 points	1-0
Allows between 70-79 points	0-2
Allows more than 80 points	0-2

Leading with 5:00 left	4-0
Trailing with 5:00 left	0-6
Tied with 5:00 left	0-0

2015-16 DOUBLE-DOUBLES

Tesha Smith - 22 points, 11 rebounds vs. Illinois State (11/27/15)
 Tesha Smith - 29 points, 12 rebounds vs. Howard Payne (12/15/15)
 Tesha Smith - 12 points, 10 rebounds vs. UT Arlington (12/21/15)

2015-16 UTSA WOMEN'S BASKETBALL

STARTERS BY GAME

Date	Opponent	Starting 5	Result
10/31/15	Trinity#	Kiejdrowska, Elonu, Thornton, Dukes, Mitchell-Cole	W, 59-50
11/8/15	St. Edward's#	Hergott, Elonu, Thornton, Dukes, Mitchell-Cole	W, 81-50
11/14/15	at Texas	Hergott, Elonu, Thornton, Dukes, Mitchell-Cole	L, 90-53
11/21/15	at Abilene Christian	Hergott, Elonu, Thornton, Dukes, Mitchell-Cole	L, 79-60
11/27/15	Illinois State	Hergott, Elonu, Thornton, Dukes, Mitchell-Cole	W, 77-51
11/29/15	Houston Baptist	Hergott, Elonu, Thornton, Dukes, Mitchell-Cole	W, 79-50
12/3/15	at Texas State	Kiejdrowska, Thornton, Hergott, Mitchell-Cole, Heineman	L, 72-64
12/13/15	at Oklahoma	Hergott, Elonu, Thornton, Dukes, Mitchell-Cole	L, 80-41
12/15/15	Howard Payne	Hergott, Elonu, Dukes, Smith, Heineman	W, 106-65
12/19/15	Texas A&M-Kingsville	Hergott, Elonu, Dukes, Smith, Mitchell-Cole	W, 88-51
12/21/15	UT Arlington	Hergott, Elonu, Dukes, Smith, Mitchell-Cole	L, 51-47
12/28/15	Texas Southern	Dukes, Heineman, Thornton, Mitchell-Cole, Elonu	L, 59-44
12/30/15	Bowling Green		
1/1/16	at North Texas		
1/3/16	at Rice		
1/7/16	UAB		
1/9/16	Middle Tennessee		
1/16/16	at UTEP		
1/21/16	at FIU		
1/23/16	at Florida Atlantic		
1/28/16	Louisiana Tech		
1/30/16	Southern Miss		
2/4/16	at WKU		
2/6/16	at Marshall		
2/11/16	Florida Atlantic		
2/13/16	FIU		
2/18/16	at Louisiana Tech		
2/20/16	at Southern Miss		
2/25/16	Charlotte		
2/27/16	Old Dominion		
3/5/16	UTEP		
3/8-12	Conference USA Basketball Championship		

- denotes exhibition game

Starting lineup combination W-L

Mathilde Hergott, Akunna Elonu, Dempsey Thornton, Alexis Dukes, Niaga Mitchell-Cole (5)	2-3
Kasia Kiejdrowska, Dempsey Thornton, Mathilde Hergott, Niaga Mitchell-Cole, Carlie Heineman (1)	0-1
Mathilde Hergott, Akunna Elonu, Alexis Dukes, Tesha Smith, Carlie Heineman (1)	1-0
Mathilde Hergott, Akunna Elonu, Alexis Dukes, Tesha Smith, Niaga Mitchell-Cole (2)	1-1
Alexis Dukes, Carlie Heineman, Dempsey Thornton, Niaga Mitchell-Cole, Akunna Elonu (1)	0-1

AP Top-25 Coaches' Poll - Dec. 28, 2015

School	Record	Points	Previous
1. Connecticut (32)	9-0	800	1
2. South Carolina	12-0	763	2
3. Notre Dame	10-1	725	3
4. Baylor	13-0	712	4
5. Texas	11-0	662	5
6. Maryland	11-0	654	6
7. Kentucky	10-0	597	7
8. Mississippi State	11-1	556	8
9. Ohio State	8-3	550	9
10. Oregon State	9-1	479	11
11. Stanford	9-2	472	12
12. Duke	9-3	402	13
13. Tennessee	8-3	394	14
14. Northwestern	11-1	349	15
15. Florida State	8-3	345	10
16. Texas A&M	9-3	327	16
17. Arizona State	8-3	244	22
18. Oklahoma	9-2	239	18
19. California	8-2	224	21
20. South Florida	7-2	192	20
21. UCLA	7-3	137	19
22. Miami	12-1	119	23
23. Missouri	12-0	101	25
24. Michigan State	9-2	99	24
25. DePaul	8-5	84	17

Dropped out:

Others receiving votes: Southern Cal 36, Seton Hall 34, Georgia 27, Virginia Tech 18, Iowa 14, Oregon 14, Syracuse 14, Florida 4, Princeton 4, UTEP 4, Nebraska 3, Oklahoma St. 2

USA Today Sports Top-25 Division I Basketball Coaches' Poll - Dec. 29

School (First-Place Votes)	Record	Points	Previous
1. Connecticut (32)	10-0	800	1
2. South Carolina	12-0	768	2
3. Notre Dame	11-1	720	3
4. Baylor	13-0	708	4
5. Maryland	11-1	659	5
6. Texas	11-0	654	6
7. Kentucky	11-0	607	7
8. Mississippi State	12-1	550	8
9. Ohio State	8-3	517	10
10. Oregon State	9-2	506	9
11. Stanford	10-2	475	11
12. Duke	9-3	411	12
13. Florida State	10-3	369	13
13. Texas A&M	9-3	369	14
15. Northwestern	11-1	352	15
16. Tennessee	8-3	290	16
17. South Florida	7-2	282	17
18. California	8-2	237	18
19. Oklahoma	9-2	209	19
20. Miami	12-1	165	20
21. Arizona State	9-3	164	21
22. Michigan State	9-2	129	22
23. Seton Hall	10-1	83	24
24. DePaul	8-5	79	23
25. Iowa	10-2	54	25

Dropped out: None

Others receiving votes: UCLA (8-3) 44; Georgia (12-1) 42; Missouri (12-0) 41; Florida (11-1) 24; Oregon (11-0) 18; Syracuse (7-3) 15; Virginia Tech (11-1) 14; Princeton (9-3) 9; Nebraska (9-2) 8; St. John's (9-2) 8; Southern California (12-0) 7; Auburn (10-2) 4; Duquesne (11-1) 3; Boston College (10-1) 2; Dayton (7-3) 2; Army (9-1) 1; Tulane (9-3) 1

NCAA RPI Rankings

Date	RPI Ranking
Dec. 1	230
Dec. 7	204
Dec. 14	184
Dec. 18	185
Dec. 21	185
Dec. 24	222
Dec. 29	224
Dec. 30	270

CONFERENCE USA

2015-16 Preseason All-Conference USA Women's Basketball Team and Preseason Poll

Lefty Webster, Charlotte, Jr., Guard
 Brandi Wingate, Louisiana Tech, Sr., Guard/Forward
 Olivia Jones, Middle Tennessee, Jr., Guard/Forward
 Leah Scott, Marshall, Sr., Guard/Forward
 Jennie Simms, Old Dominion, Jr., Guard
 Jerontay Clemons, Southern Miss, Sr., Guard
 Cameasha Turner, UTEP, Sr., Guard
 Kendall Noble, WKU, Jr, Guard

1. Middle Tennessee (5)
2. Old Dominion (4)
3. WKU (4)
4. Southern Miss
5. UTEP
6. Charlotte
- 7. UTSA (1)**
8. UAB
9. Louisiana Tech
10. Marshall
11. Florida Atlantic
12. Rice
13. FIU
14. North Texas

(#) - indicates first-place vote

Preseason Player of the Year: Olivia Jones, Middle Tennessee

Conference USA Standings

As of December 29

Team	Conference USA		Overall	
	W	L	W	L
Marshall	0	0	10	1
UTEP	0	0	9	1
WKU	0	0	9	2
Florida Atlantic	0	0	7	3
Charlotte	0	0	7	4
UAB	0	0	7	4
Southern Miss	0	0	7	4
Middle Tennessee	0	0	6	5
North Texas	0	0	5	5
Louisiana Tech	0	0	5	6
UTSA	0	0	4	6
Old Dominion	0	0	4	8
FIU	0	0	2	9
Rice	0	0	1	10

Conference USA Team Comparison - As of Dec. 29

Leader	Statistic	UTSA
CHAR - 78.6	Scoring offense	9th - 65.9
UAB - 54.1	Scoring defense	10th - 64.8
MAR - +18.7	Scoring margin	10th --+1.1
CHAR - .745	Free throw percentage	11th - .637
CHAR - .462	Field goal percentage	6th - .408
UTEP - .343	Field goal percentage - defense	2nd - .346
CHAR - .383	3-pt field goal percentage	9th - .294
USM - .270	3-pt field goal - defense	13th - .344
UAB - 43.3	Rebounding offense	5th - 41.9
UAB - 32.3	Rebounding defense	10th - 38.8
UAB - +11.0	Rebounding margin	6th - +3.1
WKU - 6.2	Blocked shots	t3rd - 4.9
MAR - 16.5	Assists	t10th - 11.9
UTEP - 12.5	Steals	5th - 8.5
UTEP - +5.4	Turnover margin	10th - -1.8
FAU - 9.7	3-point FG made	9th - 5.3

This Week in Conference USA

Wednesday, Dec. 30

Bowling Green at UTSA - 12 p.m. (CANCELED)

Friday, Jan. 1

UTEP at Rice - 2 p.m.

UTSA at North Texas - 2 p.m.

Saturday, Jan. 2

Marshall at WKU - 2 p.m.

Louisiana Tech at Southern Miss - 4 p.m.

Sunday, Jan. 3

Old Dominion at Charlotte - 12 p.m.

UAB at Middle Tennessee - 2 p.m.

UTSA at Rice - 2 p.m.

UTEP at North Texas - 3 p.m.

FIU at Florida Atlantic - TBA

Conference-only games (2014-15 FINAL)

WKU - 74.8	Scoring offense	12th - 60.6
UAB - 56.2	Scoring defense	3rd - 59.3
MT - +17.1	Scoring margin	8th - +1.3
UAB - .766	Free throw percentage	12th - .620
WKU - .459	Field goal percentage	12th - .375
ODU - .360	Field goal percentage - defense	4th - .381
UAB - .378	3-pt field goal percentage	13th - .259
UAB - .275	3-pt field goal - defense	5th - .306
ODU - 43.2	Rebounding offense	3rd - 41.3
UAB - 34.8	Rebounding defense	2nd - 36.7
UTSA - +4.6	Rebounding margin	1st
MT - 5.2	Blocked shots	7th - 3.6
MT - 16.2	Assists	12th - 10.6
WKU - 10.7	Steals	2nd - 10.4
WKU - +6.17	Turnover margin	7th - +0.22
MT - 8.1	3-point FG made	13th - 3.3

2015-16 Conference USA Freshman and Player of the Week

Player of the Week

November 16 - Ali Gorrell, Florida Atlantic
 November 23 - Kendall Noble, WKU
 November 30 - Brandi Wingate, LA Tech
 December 7 - Brea Edwards, MT
 December 14 - Brandi Wingate, LA Tech
 December 21 - Brea Edwards, MT
 December 28 - Ivy Brown, WKU
 January 5 -
 January 12 -
 January 19 -
 January 26 -
 February 2 -
 February 9 -
 February 16 -
 February 23 -
 March 2 -
 March 7

Freshman of the Week

November 16 - Shayna Gore, Marshall
 November 23 - Reauna Cleaver, LA Tech
 November 30 - Alex Johnson, MT
 December 7 - Alex Johnson, MT
 December 14 - Caitlin Jenkins, Southern Miss
 December 21 - Kierra Anthony, LA Tech
 December 28 - Deanna Kuzmanic, UAB
 January 5 -
 January 12 -
 January 19 -
 January 26 -
 February 2 -
 February 9 -
 February 16 -
 February 23 -
 March 2 -
 March 7

Honor Roll

November 16 - Cierra Gregory, Charlotte
 November 23 - Brea Edwards, MT
 November 30 - Brea Edwards, MT
 Dec. 7 - D. Young, ODU | S. Breedlove, UTEP
 Dec. 14 - A. Alexander, Char | T. Brown, WKU
 December 21 - None
 December 28 - None



The 2016 Conference USA Basketball Championships returns to Birmingham, Ala. and this time will feature all 14 member schools. The tournament is scheduled to run from Tuesday, March 8 through Saturday, March 12. Games will be held at the Birmingham-Jefferson Civic Center and Bartow Arena.

UAB hosted the 2015 edition, as well as the 1999 C-USA Men's Basketball Championship and the 1996 C-USA Women's Basketball Championship.

Runners selected seventh in C-USA Preseason Poll

After an unexpected finish in the Conference USA standings last season and a first-round bye at the conference tournament, the women's team was picked to finish seventh for the upcoming season.

Last year, UTSA tied for fourth with a 11-7 league mark.

UTEP match-up to air on ASN

American Sports Network selected the Roadrunners' road contest at UTEP on Jan. 17 to air on its network. It was one of five women's games to be selected. Along with the season opener on the Longhorn Network, the Roadrunners will hit the airwaves twice this year.

Lichonczak adds 5 for 2015-16 season

After losing five players to graduation and some to transfer, head women's basketball coach Lubomyr Lichonczak adds five to the 2015-16 season, including former volleyball standout Dempsey Thornton.

Lichonczak will add two true freshman in Alexis Dukes (Harker Heights, Texas) and Sara Anastasieska (Sydney, Australia); junior transfers Kasia Kiejdrowska (Gdynia, Poland) and Loryn Goodwin (Houston, Texas); and Thornton.

Mukosiej rounds out coaching staff

In late April, head women's basketball coach rounded out his coaching staff with the addition of Ela Mukosiej, who will head up international recruiting for the Roadrunners.

UTSA/NT Statistical Comparison

Statistic	UTSA	North Texas
Record	4-6	5-5
RPI (As of 12/30)	270	174
Scoring offense	65.9	57.6
Scoring defense	64.8	59.0
Scoring margin	+1.1	-1.4
Field goal percentage	.408	.399
Field goal percentage - defense	.346	.387
3-point field goal percentage	.294	.356
3-point FG percentage - defense	.344	.317
Free throw percentage	.637	.671
Free throw percentage - defense	.697	.723
Rebounding offense	41.9	36.3
Rebounding defense	38.8	32.9
Rebounding margin	+3.1	+3.4
Assists	11.9	11.9
Steals	8.5	5.7
Blocked shots	4.9	1.7

The Poland native played collegiate basketball at Seton Hall, where she was an honorable mention All-Big East selection. She also played professionally overseas and was instrumental in her team's success in becoming the top Polish League.

Started at the bottom, now we're here

Last season, UTSA was selected to finish tied for ninth in Conference USA but surprised most when the team tied for fourth in the standings with Old Dominion with an 11-7 record. The Roadrunners also managed to pull out a first-round bye with a 64-63 win over WKU at the Convocation Center.

Annual holiday classic in memory of Blair

UTSA has hosted its annual holiday tournament for the past 11 years. With the passing of Rae Blair back in the summer of 2014, the UTSA women's basketball program has dedicated its Holiday Classic and renamed the event to the Rae & Craig Blair Memorial Classic (Dec. 28-30).

UTSA to play a pair of ranked teams

UTSA will open its 2015-16 campaign on the road against nationally-ranked Texas. In the AP Top-25 Coaches' Poll, the Longhorns check in at No. 12 while in the WBCA/USA Today Coaches' Preseason Poll comes in at No. 11.

The Roadrunners will also face another ranked opponent in non-conference on Dec. 13 when the Roadrunners take on No. 17/18 Oklahoma.

SCOUTING THE OPPONENT

North Texas Mean Green • January 1 • 2 p.m.

- All-time record against North Texas: 9-14
- Last time out: March 7, 2014 in Denton (UTSA 57, North Texas 54)
- UTSA has won the last three meetings between both teams. UTSA won in the final minutes to earn the first-round bye at the C-USA Basketball Championships.
- North Texas welcomes UTSA with a 5-5 overall record. Its last regularly scheduled non-conference game against Oklahoma Panhandle State was canceled due to weather, similar to UTSA's final non-conference tilt.
- The Mean Green are coming off a 62-55 win over Incarnate Word and are winners of its last two games, which is the longest win streak this season.
- NT has a pair of players averaging double figures with Acheil Tac leading the way with 10.9 points and 7.9 rebounds per game. Tac is also shooting an NCAA 35th best 87.1 percent from the charity stripe.
- Candice Adams adds 10.8 points per night and a team second-best 24 assists.
- As a team, NT is shooting 39.9 percent from the field and firing 35.6 percent from 3-point range, which is best for 49th in the NCAA.

Smith amongst top in league in double-doubles

Junior Tesha Smith is best known for aggressive play on the court as the Roadrunners' sixth player of the bench. Through two seasons at UTSA, Smith has combined for seven double-doubles, which ties for sixth in the league with four other players in Conference USA.

Dukes with stellar debut

Harker Heights native Alexis Dukes had a stellar collegiate debut for the Roadrunners against nationally ranked Texas. The true freshman scored 18 points off of 6-of-9 shooting from 3-point range, adding six rebounds. Dukes also made her first official start after earning a pair of starts in exhibition action.

Neighborhood watch: Niaga Mitchell-Cole

Niaga Mitchell-Cole entered her final season with UTSA with a career 45 blocks and is now 15 away from cracking into the UTSA all-time record books. In the 10-spot is Keelah Wilson (98-00) with 61.

D-fense! D-fense!

Since the inception of quarters for the 2015-16 season, UTSA has held opponents to single digits in three quarters, both coming in its wins during the Thanksgiving Classic. The Roadrunners held Illinois State to just three points in the opening frame and then allowed only

COURT NOTES

eight points from the Redbirds in the third. UTSA did it again two days later against Houston Baptist holding the Huskies to just seven points in the third quarter.

Watch your back!

As of late, UTSA has been quick to steal the ball from its opponent and has recorded double figures in each of its last three games, averaging 10.0 steals per night. The Roadrunners tie for third in C-USA and rank 64th in the NCAA. In the team's last outing at Texas State, Niaga Mitchell-Cole had six of the team's 11 total steals. The Roadrunners tallied a season high of 17 against Houston Baptist over the Thanksgiving holiday, which was the most steals since March 7, 2015 when the Roadrunners met with North Texas on the road in the final regular season game of the year.

Smith earns first start since freshman year

In her third season as a Roadrunner, San Antonio native Tesha Smith finally earned a spot in the starting lineup and did not disappoint. The 6-1 center netted a career high 29 points and grabbed 12 rebounds for her second double-double of the year and ninth overall. Smith also led four Roadrunners in double figures.

12 years in the making

On Tuesday, Dec. 15, UTSA defeated Division III Howard Payne by a score of 106-65 and was the first time in 12 years that the Roadrunners reached triple digits. The last time UTSA scored 100-plus points was on Dec. 7, 1993 against Prairie View A&M and won 105-38.

Making the NCAA record books

On Monday, Dec. 28, UTSA and Texas Southern combined for 29 total blocks to set the NCAA record in blocked shots by both teams, surpassing the previous mark of 23 set in 2009.

UTSA totaled 16 blocks, which was also the single-game record, passing the previous mark of 14 set in 2001. Texas Southern also matched the program record of blocks against with 13.

The Tigers' Kianna Vines also matched an individual record of blocks in a game with eight, matching Cheyenne Parker's mark of 8 set last season in Murfreesboro.

NCAA STATS (Top 200)

Category	Rank
FG pct. - defense	32nd - 34.6
Blocks per game	62nd - 4.9
Rebounds per game	73rd - 41.9
Blocks	85th - 49
Rebound margin	114th - 3.1
FG pct.	136th - 40.8
Steals per game	146th - 8.5
Scoring offense	160th - 65.9
Turnovers forced	164th - 17.0
Scoring margin	175th - 1.1
Rebounds	191st - 419
Fewest turnovers	199th - 188

Individuals	Rank
Mitchell-Cole (spg)	135th - 2.11
Mitchell-Cole (bpg)	239th - 1.11
Smith (FG pct.)	87th - 51.5
Smith (rpg)	99th - 8.5

C-USA RANKS

Individuals	Avg.
4. Smith (rpg)	8.5
4. Smith (off. rpg)	3.2
6. Smith (def. rpg)	5.3
7. Smith (FG pct.)	.515
19. Smith (ppg)	12.8
9. Elonu (off. rpg)	2.6
t9. Elonu (FG pct.)	.500
7. Mitchell-Cole (spg)	2.1
t8. Mitchell-Cole (bpg)	1.1
9. Heineman (3pt FG pct.)	.417
14. Hergott (bpg)	0.9



KASIA KIEJDROWSKA
 F • Junior
 Gdynia, Poland • Mineral Area College

1

Career Records

Points

31 vs. Marshalltown (1/27/15)

Rebounds

14 vs. Howard Payne (12/15/15)

Field Goals

13 vs. Marshalltown (1/27/15)

3-point FGs

7 at Crowder (2/14/15)

Free Throws

8 at St. Louis (12/16/13)

Assists

7 (2x) last vs. State Fair (2/28/15)

Blocks

2 vs. St. Clair County (11/15/14)

Steals

8 vs. Jefferson (Mo.)(1/14/15)

#01 KIEJDROWSKA, Kasia

Opponent	Date	gs	min	Total		3-Pointers		Free throws		Rebounds				pf	a	t/o	blk	stl	pts	avg
				fg-fga	pct	3fg-fga	pct	ft-fga	pct	off	def	tot	avg							
at Texas	11/14/15	19	19	1-8	.125	1-5	.200	2-2	1.000	0	4	4	4.0	5	0	1	0	1	5	5.0
at Abilene Christian	11/21/15	26	26	3-9	.333	2-6	.333	1-2	.500	0	6	6	5.0	0	1	1	0	0	9	7.0
ILLINOIS STATE	11/27/15	17	17	3-5	.600	0-1	.000	1-2	.500	0	0	3.3	2	2	0	0	2	7	7.0	
HOUSTON BAPTIST	11/29/15	28	28	2-5	.400	0-1	.000	0-1	.000	0	4	4	3.5	4	1	3	0	2	4	6.3
at Texas State	12/03/15	*	15	1-5	.200	1-2	.500	0-0	.000	1	1	2	3.2	1	0	0	0	3	5.6	
at Oklahoma	12/13/15	16	16	3-6	.500	2-4	.500	0-0	.000	0	3	3	3.2	3	0	1	0	0	8	6.0
HOWARD PAYNE	12/15/15	25	25	3-11	.273	3-4	.750	0-0	.000	5	9	14	4.7	1	1	2	0	0	9	6.4
TEXAS A&M-KINGSVILLE	12/19/15	19	19	3-6	.500	1-3	.333	0-1	.000	0	6	6	4.9	5	1	1	0	0	7	6.5
UT ARLINGTON	12/21/15	18	18	3-7	.429	1-4	.250	0-0	.000	0	1	1	4.4	4	1	0	0	1	7	6.6
TEXAS SOUTHERN	12/28/15	15	15	4-10	.400	1-5	.200	0-0	.000	0	1	1	4.1	1	0	1	1	0	9	6.8
Totals		1	198	26-72	.361	12-35	.343	4-8	.500	6	35	41	4.1	26	7	10	1	6	68	6.8

Games played: 10
 Minutes/game: 19.8
 Points/game: 6.8
 FG Pct: 36.1
 3FG Pct: 34.3
 FT Pct: 50.0

Rebounds/game: 4.1
 Assists/game: 0.7
 Turnovers/game: 1.0
 Assist/turnover ratio: 0.7
 Steals/game: 0.6
 Blocks/game: 0.1

Season	GP-GS	Min./Avg.	Total		3-PT		Career Stats FT		Rebounds				Scoring							
			FG-FGA	Pct.	FG-FGA	Pct.	FT-FGA	Pct.	Off	Def	Tot	Avg.	PF	FO	A	TO	BLK	STL	PTS	Avg.
2015-16	10-1	198/19.8	26-72	.361	12-35	.343	4-8	.500	6	35	41	4.1	26	2	7	10	1	6	68	6.8
2014-15*	31-30	783/25.3	148-372	.398	63-164	.384	50-70	.714	24	106	130	4.2	72	3	97	66	10	52	409	13.2
2012-13*	29-12	668/23.0	45-138	.326	48-125	.384	59-66	.894	18	73	91	3.1	59	1	77	77	5	48	293	10.1
TOTAL	70-43	1649/23.6	219-582	.376	123-324	.380	113-144	.785	48	214	262	3.7	157	6	181	153	16	106	770	11.0

* denotes stats from previous school

2015-16 Player Notes:

- Got her first official start as a Roadrunner against I-35 rival Texas State



MATHILDE HERGOTT
 G/F • Junior
 Lyon, France • Lycee Jean Mermoz

2

Career Records

Points
 22 vs. UTEP (2/26/14)

Rebounds
 6 vs. Nicholls State (12/21/14)

Field Goals
 8 vs. UTEP (2/26/14)

3-point FGs
 6 vs. Tulsa (3/11/14)

Free Throws
 2 (9x) last at Rice (3/5/15)

Assists
 5 (2x) last vs. LA Tech (11/10/15)

Blocks
 3 vs. Texas Southern (12/28/15)

Steals
 5 vs. Houston Baptist (11/29/15)

#02 HERGOTT, Mathilde

Opponent	Date	gs	min	Total		3-Pointers		Free throws		Rebounds				pf	a	t/o	blk	stl	pts	avg	
				fg-fga	pct	3fg-fga	pct	ft-fa	pct	off	def	tot	avg								
at Texas	11/14/15	*	20	1-3	.333	1-2	.500	0-0	.000	0	1	1	1.0	2	2	3	0	0	3	3.0	
at Abilene Christian	11/21/15	*	21	0-2	.000	0-1	.000	0-0	.000	0	2	2	1.5	2	0	2	1	0	0	1.5	
ILLINOIS STATE	11/27/15	*	18	1-4	.250	0-1	.000	0-0	.000	0	1	1	1.3	1	2	3	2	1	2	1.7	
HOUSTON BAPTIST	11/29/15	*	34	4-12	.333	0-3	.000	0-2	.000	0	1	1	1.3	3	3	2	1	5	8	3.3	
at Texas State	12/03/15	*	34	3-11	.273	1-6	.167	0-0	.000	0	3	3	1.6	3	3	3	1	3	7	4.0	
at Oklahoma	12/13/15	*	25	2-9	.222	1-4	.250	0-0	.000	0	3	3	1.8	3	3	3	1	0	5	4.2	
HOWARD PAYNE	12/15/15	*	22	2-2	1.000	1-1	1.000	0-0	.000	1	1	2	1.9	3	4	4	0	0	5	4.3	
TEXAS A&M-KINGSVILLE	12/19/15	*	22	3-7	.429	1-2	.500	0-0	.000	1	3	4	2.1	2	3	4	0	0	7	4.6	
UT ARLINGTON	12/21/15	*	18	0-4	.000	0-2	.000	0-0	.000	0	3	3	2.2	0	0	4	0	1	0	4.1	
TEXAS SOUTHERN	12/28/15		31	0-5	.000	0-3	.000	0-0	.000	0	4	4	2.4	3	3	1	3	0	0	3.7	
Totals			9	245	16-59	.271	5-25	.200	0-2	.000	2	22	24	2.4	22	23	29	9	10	37	3.7

Games played: 10
 Minutes/game: 24.5
 Points/game: 3.7
 FG Pct: 27.1
 3FG Pct: 20.0
 FT Pct: 0.0

Rebounds/game: 2.4
 Assists/game: 2.3
 Turnovers/game: 2.9
 Assist/turnover ratio: 0.8
 Steals/game: 1.0
 Blocks/game: 0.9

Season	GP-GS	Min./Avg.	Total		3-PT		Career Stats FT		Rebounds				Scoring							
			FG-FGA	Pct.	FG-FGA	Pct.	FT-FTA	Pct.	Off	Def	Tot	Avg.	PF	FO	A	TO	BLK	STL	PTS	Avg.
2015-16	10-9	245/24.5	16-59	.271	5-25	.200	0-2	.000	2	22	24	2.4	22	0	23	29	9	10	37	3.7
2014-15	27-16	592/21.9	55-172	.320	23-86	.267	12-19	.632	15	31	46	1.7	40	0	47	61	17	30	145	5.4
2013-14	29-4	439/15.1	34-112	.304	19-61	.311	9-14	.643	6	29	35	1.2	43	1	27	27	5	8	96	3.3
2012-13	12-0	54/4.5	5-18	.278	3-9	.333	1-1	1.000	4	1	5	0.4	8	0	4	7	0	1	14	1.2
TOTAL	78-29	1330/17.1	110-361	.305	50-181	.276	22-36	.611	27	83	110	1.4	113	1	101	124	31	49	292	3.7

2015-16 Player Notes:

- Had a 5-game streak where Hergott scored 5 or more points



ALEXUS DUKES

G • Freshman

Harker Heights, Texas • Harker Heights HS

3

Career Records

Points

18 at Texas (11/14/15)

Rebounds

6 at Texas (11/14/15)

Field Goals

6 (2x) last vs. Houston Baptist (11/29/15)

3-point FGs

6 at Texas (11/14/15)

Free Throws

4 vs. Howard Payne (12/15/15)

Assists

6 vs. Howard Payne (12/15/15)

Blocks

1 (2x) last vs. Texas Southern (12/28/15)

Steals

4 vs. Houston Baptist (11/29/15)

#03 DUKES, Alexus

Opponent	Date	gs	min	Total		3-Pointers		Free throws		Rebounds				pf	a	t/o	blk	stl	pts	avg	
				fg-fga	pct	3fg-fga	pct	ft-fa	pct	off	def	tot	avg								
at Texas	11/14/15	*	29	6-12	.500	6-9	.667	0-0	.000	1	5	6	6.0	1	2	2	0	0	18	18.0	
at Abilene Christian	11/21/15	*	24	2-9	.222	0-4	.000	0-2	.000	1	1	2	4.0	3	2	5	0	0	4	11.0	
ILLINOIS STATE	11/27/15	*	24	3-5	.600	0-0	.000	0-0	.000	0	3	3	3.7	2	4	4	0	1	6	9.3	
HOUSTON BAPTIST	11/29/15	*	28	6-10	.600	0-3	.000	1-2	.500	0	1	1	3.0	2	3	3	0	4	13	10.3	
at Texas State	12/03/15		4	0-1	.000	0-1	.000	0-0	.000	0	0	0	2.4	0	0	0	0	0	0	8.2	
at Oklahoma	12/13/15	*	20	1-9	.111	0-3	.000	0-0	.000	0	0	0	2.0	2	0	2	0	2	2	7.2	
HOWARD PAYNE	12/15/15	*	27	2-5	.400	0-1	.000	4-4	1.000	0	3	3	2.1	4	6	2	1	1	8	7.3	
TEXAS A&M-KINGSVILLE	12/19/15	*	31	5-9	.556	1-3	.333	1-2	.500	1	2	3	2.3	0	1	0	0	1	12	7.9	
UT ARLINGTON	12/21/15	*	20	1-5	.200	0-1	.000	2-2	1.000	0	5	5	2.6	3	3	4	0	1	4	7.4	
TEXAS SOUTHERN	12/28/15	*	24	4-14	.286	0-3	.000	1-2	.500	0	1	1	2.4	5	2	3	1	3	9	7.6	
Totals			9	231	30-79	.380	7-28	.250	9-14	.643	3	21	24	2.4	22	23	25	2	13	76	7.6

Games played: 10
 Minutes/game: 23.1
 Points/game: 7.6
 FG Pct: 38.0
 3FG Pct: 25.0
 FT Pct: 64.3

Rebounds/game: 2.4
 Assists/game: 2.3
 Turnovers/game: 2.5
 Assist/turnover ratio: 0.9
 Steals/game: 1.3
 Blocks/game: 0.2

Season	GP-GS	Min./Avg.	Total		3-PT		Career Stats FT		Rebounds				Scoring							
			FG-FGA	Pct.	FG-FGA	Pct.	FT-FTA	Pct.	Off	Def	Tot	Avg.	PF	FO	A	TO	BLK	STL	PTS	Avg.
2015-16	10-9	231/23.1	30-79	.380	7-28	.250	9-14	.643	3	21	24	2.4	22	1	23	25	2	13	76	7.6
TOTAL	10-9	231/23.1	30-79	.380	7-28	.250	9-14	.643	3	21	24	2.4	22	1	23	25	2	13	76	7.6

2015-16 Player Notes:

- Made 4 straight 3-pointers against Texas...finished 6-9 from beyond the arc
- Scored in double digits three times this season
- Recorded season highs in free throws, assists and blocks against Howard Payne in a 106-65 win at the Convo



CRYSTAL CHIDOMERE

G • Sophomore
Richmond, Texas • Bush HS

4

Career Records

Points

14 vs. South Dakota (12/28/14)

Rebounds

5 (2x) last at Abilene Christian (11/21/15)

Field Goals

7 vs. South Dakota (12/28/14)

3-point FGs

1 (5x) last at Texas (11/14/15)

Free Throws

4 (2x) last at UAB (1/31/15)

Assists

5 vs. Howard Payne (12/15/15)

Blocks

3 vs. Incarnate Word (11/30/14)

Steals

4 vs. Illinois State (11/27/15)

#04 CHIDOMERE, Crystal

Opponent	Date	gs	min	Total		3-Pointers		Free throws		Rebounds				pf	a	t/o	blk	stl	pts	avg
				fg-fga	pct	3fg-fga	pct	ft-fa	pct	off	def	tot	avg							
at Texas	11/14/15	12	1-3	.333	1-2	.500	0-0	.000	0	2	2	2.0	1	0	3	0	1	3	3.0	
at Abilene Christian	11/21/15	27	6-13	.462	0-2	.000	0-0	.000	1	4	5	3.5	4	3	6	0	1	12	7.5	
ILLINOIS STATE	11/27/15	25	2-5	.400	0-0	.000	3-3	1.000	0	5	5	4.0	3	3	4	1	4	7	7.3	
HOUSTON BAPTIST	11/29/15	3	0-0	.000	0-0	.000	0-0	.000	0	0	0	3.0	1	0	0	0	0	0	5.5	
at Texas State	12/03/15	15	1-4	.250	0-0	.000	0-0	.000	1	1	2	2.8	2	1	2	1	1	2	4.8	
at Oklahoma	12/13/15	13	1-6	.167	0-1	.000	0-0	.000	0	1	1	2.5	2	1	1	0	0	2	4.3	
HOWARD PAYNE	12/15/15	23	3-8	.375	0-1	.000	0-0	.000	2	1	3	2.6	1	5	0	0	2	6	4.6	
TEXAS A&M-KINGSVILLE	12/19/15	22	5-7	.714	0-0	.000	0-2	.000	2	3	5	2.9	3	3	2	2	4	10	5.3	
UT ARLINGTON	12/21/15	25	2-4	.500	0-0	.000	2-2	1.000	1	0	1	2.7	5	1	7	2	2	6	5.3	
TEXAS SOUTHERN	12/28/15	11	1-5	.200	0-1	.000	0-0	.000	1	2	3	2.7	2	1	1	0	2	2	5.0	
Totals		0	176	22-55	.400	1-7	.143	5-7	.714	8	19	27	2.7	24	18	26	6	17	50	5.0

Games played: 10
Minutes/game: 17.6
Points/game: 5.0
FG Pct: 40.0
3FG Pct: 14.3
FT Pct: 71.4

Rebounds/game: 2.7
Assists/game: 1.8
Turnovers/game: 2.6
Assist/turnover ratio: 0.7
Steals/game: 1.7
Blocks/game: 0.6

Season	GP-GS	Min./Avg.	Total		3-PT		Career Stats FT		Rebounds				Scoring							
			FG-FGA	Pct.	FG-FGA	Pct.	FT-FTA	Pct.	Off	Def	Tot	Avg.	PF	FO	A	TO	BLK	STL	PTS	Avg.
2015-16	10-0	176/17.6	22-55	.400	1-7	.143	5-7	.714	8	19	27	2.7	24	1	18	26	6	17	50	5.0
2014-15	29-0	390/13.4	54-157	.344	4-18	.222	19-29	.655	20	31	51	1.8	44	1	37	44	11	17	131	4.5
TOTAL	39-0	566/14.5	76-212	.358	5-25	.200	24-36	.667	28	50	78	2.0	68	2	55	70	17	34	181	4.6

2015-16 Player Notes:

- Has either set or matched a career high this season in four categories



ALANA HEARD
 G • Junior
 Missouri City, Texas • Hightower HS

5

Career Records

Points
 9 vs. UT Arlington (11/17/13)

Rebounds
 7 vs. Norfolk State (11/30/13)

Field Goals
 4 vs. Tulsa (1/8/14)

3-point FGs
 -

Free Throws
 6 vs. Norfolk State (11/30/13)

Assists
 5 (2x) last vs. UT Arlington (12/2/14)

Blocks
 3 vs. Lamar (11/23/14)

Steals
 4 (3x) last vs. FIU (2/15/15)

#05 HEARD, Alana

Opponent	Date	gs	min	Total		3-Pointers		Free throws		Rebounds				pf	a	t/o	blk	stl	pts	avg	
				fg-fga	pct	3fg-fga	pct	ft-fa	pct	off	def	tot	avg								
at Texas	11/14/15		12	1-3	.333	0-0	.000	0-0	.000	0	2	2	2.0	0	0	3	0	0	2	2.0	
at Abilene Christian	11/21/15	dnp		-	-	-	-	-	-	-	-	-	-	-	-	-	-	-	-	-	
ILLINOIS STATE	11/27/15	dnp		-	-	-	-	-	-	-	-	-	-	-	-	-	-	-	-	-	
HOUSTON BAPTIST	11/29/15	dnp		-	-	-	-	-	-	-	-	-	-	-	-	-	-	-	-	-	
at Texas State	12/03/15	dnp		-	-	-	-	-	-	-	-	-	-	-	-	-	-	-	-	-	
at Oklahoma	12/13/15	dnp		-	-	-	-	-	-	-	-	-	-	-	-	-	-	-	-	-	
HOWARD PAYNE	12/15/15	dnp		-	-	-	-	-	-	-	-	-	-	-	-	-	-	-	-	-	
TEXAS A&M-KINGSVILLE	12/19/15	dnp		-	-	-	-	-	-	-	-	-	-	-	-	-	-	-	-	-	
UT ARLINGTON	12/21/15	dnp		-	-	-	-	-	-	-	-	-	-	-	-	-	-	-	-	-	
TEXAS SOUTHERN	12/28/15	dnp		-	-	-	-	-	-	-	-	-	-	-	-	-	-	-	-	-	
Totals			0	12	1-3	.333	0-0	.000	0-0	.000	0	2	2	2.0	0	0	3	0	0	2	2.0

Games played: 1
 Minutes/game: 12.0
 Points/game: 2.0
 FG Pct: 33.3

Rebounds/game: 2.0
 Turnovers/game: 3.0

Season	GP-GS	Min./Avg.	Total		3-PT		Career Stats FT		Rebounds				Scoring							
			FG-FGA	Pct.	FG-FGA	Pct.	FT-FTA	Pct.	Off	Def	Tot	Avg.	PF	FO	A	TO	BLK	STL	PTS	Avg.
2015-16	1-0	12/12.0	1-3	.333	0-0	.000	0-0	.000	0	2	2	2.0	0	0	0	3	0	0	2	2.0
2014-15	29-14	452/15.6	26-86	.302	0-3	.000	31-40	.775	10	42	52	1.8	70	3	49	73	7	21	83	2.9
2013-14	30-0	327/10.9	20-63	.317	0-0	.000	21-42	.500	14	29	43	1.4	53	1	40	56	2	26	61	2.0
TOTAL	60-14	791/13.2	47-152	.309	0-3	.000	52-82	.634	24	73	97	1.6	123	4	89	132	9	47	146	2.4

2015-16 Player Notes:



SARA ANASTASIESKA
G • Freshman
 Sydney, NSW, Australia • Monte Sant Angelo Mercy
 College
11

Career Records

Points

15 vs. Howard Payne (12/15/15)

Rebounds

8 vs. Texas A&M-Kingsville (12/19/15)

Field Goals

6 vs. Howard Payne (12/15/15)

3-point FGs

3 vs. Howard Payne (12/15/15)

Free Throws

2 (2x) last vs. TAMUK (12/19/15)

Assists

2 vs. Houston Baptist (11/29/15)

Blocks

2 vs. Texas A&M-Kingsville (12/19/15)

Steals

1 at Texas (11/14/15)

#11 ANASTASIESKA, Sara

Opponent	Date	gs	min	Total		3-Pointers		Free throws		Rebounds				pf	a	t/o	blk	stl	pts	avg
				fg-fga	pct	3fg-fga	pct	ft-fa	pct	off	def	tot	avg							
at Texas	11/14/15	15	15	1-3	.333	1-3	.333	0-0	.000	1	2	3	3.0	2	1	2	0	1	3	3.0
at Abilene Christian	11/21/15	7	7	0-3	.000	0-1	.000	0-0	.000	0	0	0	1.5	1	0	2	0	0	0	1.5
ILLINOIS STATE	11/27/15	19	19	2-4	.500	0-1	.000	0-0	.000	0	1	1	1.3	3	1	3	0	0	4	2.3
HOUSTON BAPTIST	11/29/15	15	15	1-2	.500	0-1	.000	2-2	1.000	0	3	3	1.8	2	2	3	0	1	4	2.8
at Texas State	12/03/15	3	3	0-0	.000	0-0	.000	0-0	.000	0	0	0	1.4	1	0	1	0	0	0	2.2
at Oklahoma	12/13/15	14	14	1-2	.500	0-1	.000	1-2	.500	0	3	3	1.7	0	0	2	0	0	3	2.3
HOWARD PAYNE	12/15/15	24	24	6-9	.667	3-4	.750	0-0	.000	0	2	2	1.7	4	1	3	0	0	15	4.1
TEXAS A&M-KINGSVILLE	12/19/15	22	22	3-12	.250	1-4	.250	2-2	1.000	2	6	8	2.5	3	0	1	2	0	9	4.8
UT ARLINGTON	12/21/15	6	6	0-3	.000	0-0	.000	0-0	.000	1	2	3	2.6	0	0	0	0	0	0	4.2
TEXAS SOUTHERN	12/28/15	0	0	dnf	-	-	-	-	-	-	-	-	-	-	-	-	-	-	-	-
Totals		0	125	14-38	.368	5-15	.333	5-6	.833	4	19	23	2.6	16	5	17	2	2	38	4.2

Games played: 9
 Minutes/game: 13.9
 Points/game: 4.2
 FG Pct: 36.8
 3FG Pct: 33.3
 FT Pct: 83.3

Rebounds/game: 2.6
 Assists/game: 0.6
 Turnovers/game: 1.9
 Assist/turnover ratio: 0.3
 Steals/game: 0.2
 Blocks/game: 0.2

Season	GP-GS	Min./Avg.	Total		3-PT		Career Stats FT		Rebounds				Scoring							
			FG-FGA	Pct.	FG-FGA	Pct.	FT-FTA	Pct.	Off	Def	Tot	Avg.	PF	FO	A	TO	BLK	STL	PTS	Avg.
2015-16	9-0	125/13.9	14-38	.368	5-15	.333	5-6	.833	4	19	23	2.6	16	0	5	17	2	2	38	4.2
TOTAL	9-0	125/13.9	14-38	.368	5-15	.333	5-6	.833	4	19	23	2.6	16	0	5	17	2	2	38	4.2

2015-16 Player Notes:

- Had a breakout game against Howard Payne with a season best 15 points on 6 of 9 shooting from the field, including 3 of 4 from 3-point range



NIAGA MITCHELL-COLE

G/F • Senior

San Antonio, Texas • Roosevelt HS

12

Career Records

Points

23 at Abilene Christian (11/21/15)

Rebounds

10 (2x) last vs. Tulsa (1/8/14)

Field Goals

8 at Abilene Christian (11/21/15)

3-point FGs

3 at Abilene Christian (11/21/15)

Free Throws

6 vs. Abilene Christian (11/19/14)

Assists

4 at Texas State (12/3/15)

Blocks

5 vs. Texas Southern (12/28/15)

Steals

6 at Texas State (12/3/15)

#12 MITCHELL-COLE, Niaga

Opponent	Date	gs	min	Total		3-Pointers		Free throws		Rebounds				pf	a	t/o	blk	stl	pts	avg	
				fg-fga	pct	3fg-fga	pct	ft-fa	pct	off	def	tot	avg								
at Texas	11/14/15	*	22	0-5	.000	0-1	.000	2-2	1.000	0	2	2	2.0	1	3	0	0	0	2	2.0	
at Abilene Christian	11/21/15	*	34	8-14	.571	3-4	.750	4-6	.667	3	4	7	4.5	4	1	2	1	4	23	12.5	
ILLINOIS STATE	11/27/15	*	15	2-4	.500	0-1	.000	0-0	.000	1	6	7	5.3	1	1	1	0	2	4	9.7	
HOUSTON BAPTIST	11/29/15	*	18	6-7	.857	0-0	.000	2-5	.400	3	2	5	5.3	1	0	1	0	1	14	10.8	
at Texas State	12/03/15	*	40	5-14	.357	2-6	.333	4-6	.667	0	4	4	5.0	3	4	2	0	6	16	11.8	
at Oklahoma	12/13/15	*	29	0-9	.000	0-3	.000	0-0	.000	0	4	4	4.8	0	1	1	2	3	0	9.8	
HOWARD PAYNE	12/15/15	dnp	-	-	-	-	-	-	-	-	-	-	-	-	-	-	-	-	-	-	
TEXAS A&M-KINGSVILLE	12/19/15	*	14	4-6	.667	0-0	.000	0-0	.000	1	2	3	4.6	1	1	0	1	2	8	9.6	
UT ARLINGTON	12/21/15	*	27	0-5	.000	0-2	.000	1-2	.500	1	2	3	4.4	3	1	4	1	1	1	8.5	
TEXAS SOUTHERN	12/28/15	*	27	2-7	.286	0-0	.000	0-2	.000	3	3	6	4.6	3	0	2	5	0	4	8.0	
Totals			9	226	27-71	.380	5-17	.294	13-23	.565	12	29	41	4.6	17	12	13	10	19	72	8.0

Games played: 9
 Minutes/game: 25.1
 Points/game: 8.0
 FG Pct: 38.0
 3FG Pct: 29.4
 FT Pct: 56.5

Rebounds/game: 4.6
 Assists/game: 1.3
 Turnovers/game: 1.4
 Assist/turnover ratio: 0.9
 Steals/game: 2.1
 Blocks/game: 1.1

Season	GP-GS	Min./Avg.	Total		3-PT		Career Stats FT		Rebounds				Scoring							
			FG-FGA	Pct.	FG-FGA	Pct.	FT-FTA	Pct.	Off	Def	Tot	Avg.	PF	FO	A	TO	BLK	STL	PTS	Avg.
2015-16	9-9	226/25.1	27-71	.380	5-17	.294	13-23	.565	12	29	41	4.6	17	0	12	13	10	19	72	8.0
2014-15	20-6	453/22.7	41-148	.277	4-31	.129	41-54	.759	21	57	78	3.9	33	0	9	35	17	20	127	6.4
2013-14	22-12	427/19.4	31-116	.267	4-31	.129	28-54	.519	41	47	88	4.0	56	2	18	27	13	24	94	4.3
2012-13	30-0	564/18.8	55-161	.342	18-66	.273	22-49	.449	59	69	128	4.3	60	1	12	31	15	24	150	5.0
TOTAL	81-27	1670/20.6	154-496	.310	31-145	.214	104-180	.578	133	202	335	4.1	166	3	51	106	55	87	443	5.5

2015-16 Player Notes:

- CAREER DOUBLE-DOUBLES: 1
- 2012-13: 1 double-double
- Career day against Abilene Christian netting 23 points off 8-14 shooting from the field, including 3-4 from behind the arc
- Scored in double figures three times this season, including a career-best 23 at ACU
- Is six blocks away from cracking into the UTSA all-time record books. In the 10-spot is Keelah Wilson (98-00) with 61
- Posted a career best of five swats against Texas Southern - helped UTSA to combine with TSU for 29 blocks (NCAA record)



AKUNNA ELONU

F • Senior
Houston, Texas • Elsik HS

21

Career Records

Points

15 vs. UT Arlington (12/2/14)

Rebounds

13 (2x) last vs. Louisiana Tech (3/1/15)

Field Goals

7 vs. Marshall (1/22/15)

3-point FGs

2 vs. Illinois State (11/27/15)

Free Throws

9 vs. Northern Iowa (11/29/13)

Assists

3 (3x) last vs. Old Dominion (3/12/15)

Blocks

3 vs. Old Dominion (3/12/15)

Steals

3 (3x) last vs. Texas Southern (12/28/15)

#21 ELONU, Akunna

Opponent	Date	gs	min	Total		3-Pointers		Free throws		Rebounds				pf	a	t/o	blk	stl	pts	avg	
				fg-fga	pct	3fg-fga	pct	ft-fa	pct	off	def	tot	avg								
at Texas	11/14/15	*	22	2-9	.222	0-3	.000	1-1	1.000	1	1	2	2.0	4	0	4	1	1	5	5.0	
at Abilene Christian	11/21/15	*	24	1-7	.143	0-3	.000	2-2	1.000	1	2	3	2.5	5	1	4	0	0	4	4.5	
ILLINOIS STATE	11/27/15	*	17	3-6	.500	2-2	1.000	4-6	.667	0	2	2	2.3	2	1	1	0	2	12	7.0	
HOUSTON BAPTIST	11/29/15	*	15	4-7	.571	0-1	.000	2-3	.667	3	6	9	4.0	2	0	0	0	1	10	7.8	
at Texas State	12/03/15		28	4-7	.571	1-2	.500	0-0	.000	4	7	11	5.4	4	2	0	0	1	9	8.0	
at Oklahoma	12/13/15	*	25	2-5	.400	0-2	.000	1-2	.500	4	3	7	5.7	4	0	1	0	0	5	7.5	
HOWARD PAYNE	12/15/15	*	15	5-6	.833	0-0	.000	4-5	.800	4	0	4	5.4	0	0	2	0	1	14	8.4	
TEXAS A&M-KINGSVILLE	12/19/15	*	17	4-5	.800	0-1	.000	0-0	.000	2	4	6	5.5	3	1	2	0	0	8	8.4	
UT ARLINGTON	12/21/15	*	23	5-7	.714	0-2	.000	0-0	.000	3	2	5	5.4	3	1	2	1	0	10	8.6	
TEXAS SOUTHERN	12/28/15	*	34	4-9	.444	0-0	.000	0-0	.000	4	6	10	5.9	1	0	2	2	3	8	8.5	
Totals			9	220	34-68	.500	3-16	.188	14-19	.737	26	33	59	5.9	28	6	18	4	9	85	8.5

Games played: 10
Minutes/game: 22.0
Points/game: 8.5
FG Pct: 50.0
3FG Pct: 18.8
FT Pct: 73.7

Rebounds/game: 5.9
Assists/game: 0.6
Turnovers/game: 1.8
Assist/turnover ratio: 0.3
Steals/game: 0.9
Blocks/game: 0.4

Season	GP-GS	Min./Avg.	Total		3-PT		Career Stats FT		Rebounds				Scoring							
			FG-FGA	Pct.	FG-FGA	Pct.	FT-FTA	Pct.	Off	Def	Tot	Avg.	PF	FO	A	TO	BLK	STL	PTS	Avg.
2015-16	10-9	220/22.0	34-68	.500	3-16	.188	14-19	.737	26	33	59	5.9	28	1	6	18	4	9	85	8.5
2014-14	31-31	777/25.1	90-173	.520	0-1	.000	45-71	.634	95	130	225	7.3	62	0	20	45	20	25	225	7.3
2013-14	29-16	453/15.6	38-75	.507	0-0	.000	31-44	.705	38	72	110	3.8	34	0	7	23	2	9	107	3.7
2012-13	22-1	201/9.1	23-57	.404	0-0	.000	12-22	.545	32	36	68	3.1	22	0	8	10	2	9	58	2.6
TOTAL	92-57	1651/17.9	185-373	.496	3-17	.176	102-156	.654	191	271	462	5.0	146	1	41	96	28	52	475	5.2

2015-16 Player Notes:

- CAREER DOUBLE-DOUBLES: 5
 - 2014-15: 5 double-doubles
- Fouled out for the first time in her career at Abilene Christian
- Scored first-ever 3-pointer against Illinois State going 2-for-2 from long range
- Has three games this season in double figures
- Has reached double figure rebounds twice this season



DEMPSEY THORNTON

C • Graduate
Corpus Christi, Texas • King HS

23

Career Records

Points

13 vs. Howard Payne (12/15/15)

Rebounds

6 vs. Howard Payne (12/15/15)

Field Goals

6 vs. Howard Payne (12/15/15)

3-point FGs

-

Free Throws

1 (4x) last vs. UT Arlington (12/21/15)

Assists

2 vs. Howard Payne (12/15/15)

Blocks

2 (2x) last vs. TAMUK (12/19/15)

Steals

2 vs. Howard Payne (12/15/15)

#23 THORNTON, Dempsey

Opponent	Date	gs	min	Total		3-Pointers		Free throws		Rebounds				pf	a	t/o	blk	stl	pts	avg	
				fg-fga	pct	3fg-fga	pct	ft-fga	pct	off	def	tot	avg								
at Texas	11/14/15	*	22	1-3	.333	0-1	.000	0-0	.000	0	1	1	1.0	3	1	1	1	0	2	2.0	
at Abilene Christian	11/21/15	*	21	2-2	1.000	0-0	.000	0-0	.000	1	3	4	2.5	1	1	0	0	0	4	3.0	
ILLINOIS STATE	11/27/15	*	18	3-4	.750	0-0	.000	1-4	.250	0	2	2	2.3	2	1	2	0	0	7	4.3	
HOUSTON BAPTIST	11/29/15	*	21	1-1	1.000	0-0	.000	0-0	.000	0	2	2	2.3	3	0	2	0	1	2	3.8	
at Texas State	12/03/15	*	15	0-2	.000	0-0	.000	1-2	.500	1	3	4	2.6	1	0	2	0	0	1	3.2	
at Oklahoma	12/13/15	*	19	1-3	.333	0-0	.000	0-0	.000	1	3	4	2.8	2	0	1	0	0	2	3.0	
HOWARD PAYNE	12/15/15		19	6-10	.600	0-0	.000	1-1	1.000	2	4	6	3.3	2	2	8	2	2	13	4.4	
TEXAS A&M-KINGSVILLE	12/19/15		13	1-2	.500	0-0	.000	0-0	.000	0	2	2	3.1	1	0	0	2	0	2	4.1	
UT ARLINGTON	12/21/15		8	0-1	.000	0-0	.000	1-2	.500	2	1	3	3.1	1	0	1	0	0	1	3.8	
TEXAS SOUTHERN	12/28/15	*	15	2-7	.286	0-0	.000	0-0	.000	2	2	4	3.2	0	1	0	1	0	4	3.8	
Totals			7	171	17-35	.486	0-1	.000	4-9	.444	9	23	32	3.2	16	6	17	6	3	38	3.8

Games played: 10
Minutes/game: 17.1
Points/game: 3.8
FG Pct: 48.6
3FG Pct: 0.0
FT Pct: 44.4

Rebounds/game: 3.2
Assists/game: 0.6
Turnovers/game: 1.7
Assist/turnover ratio: 0.4
Steals/game: 0.3
Blocks/game: 0.6

Season	GP-GS	Min./Avg.	Total		3-PT		Career Stats FT		Rebounds				Scoring							
			FG-FGA	Pct.	FG-FGA	Pct.	FT-FTA	Pct.	Off	Def	Tot	Avg.	PF	FO	A	TO	BLK	STL	PTS	Avg.
2015-16	10-7	171/17.1	17-35	.486	0-1	.000	4-9	.444	9	23	32	3.2	16	0	6	17	6	3	38	3.8
TOTAL	10-7	171/17.1	17-35	.486	0-1	.000	4-9	.444	9	23	32	3.2	16	0	6	17	6	3	38	3.8

2015-16 Player Notes:

- Had a breakout game against Howard Payne with 13 points, 6 rebounds with a pair of assists, blocks and steals.



TAYLOR WILLIAMS

F • Junior

Katy, Texas • Cinco Ranch HS

25

Career Records

Points

4 vs. Incarnate Word (11/30/14)

Rebounds

5 vs. Houston (12/19/14)

Assists

-

Field Goals

2 vs. Incarnate Word (11/30/14)

3-point FGs

-

Free Throws

2 vs. Texas (11/15/14)

Blocks

3 vs. Texas State (12/4/14)

Steals

1 vs. Houston (12/19/14)

Season	GP-GS	Min./Avg.	Total		3-PT		Career Stats FT		Rebounds				Scoring							
			FG-FGA	Pct.	FG-FGA	Pct.	FT-FTA	Pct.	Off	Def	Tot	Avg.	Pf	FO	A	TO	BLK	STL	PTS	Avg.
2014-15	20-0	87/4.4	4-5	.800	0-0	.000	2-4	.500	4	9	13	0.7	8	0	0	2	9	1	10	0.5
2013-14	9-0	19/2.1	1-4	.250	0-0	.000	0-0	.000	2	2	4	0.4	2	0	0	2	1	0	2	0.2
TOTAL	29-0	106/3.7	5-9	.556	0-0	.000	2-4	.500	6	11	17	0.6	10	0	0	4	10	1	12	0.4

2015-16 Player Notes:



TESHA SMITH
 C • Junior
 San Antonio, Texas • Wagner HS

30

Career Records

Points

29 vs. Howard Payne (12/15/15)

Rebounds

14 vs. UTEP (2/21/15)

Field Goals

12 vs. Howard Payne (12/15/15)

3-point FGs

-

Free Throws

10 vs. East Carolina (2/20/14)

Assists

2 vs. Howard Payne (12/15/15)

Blocks

3 (2x) last vs. North Texas (1/4/15)

Steals

2 (2x) last vs. Tulane (2/8/14)

#30 SMITH, Tessa

Opponent	Date	gs	min	Total		3-Pointers		Free throws		Rebounds				pf	a	t/o	blk	stl	pts	avg
				fg-fga	pct	3fg-fga	pct	ft-fga	pct	off	def	tot	avg							
at Texas	11/14/15	15	2-8	.250	0-0	.000	3-5	.600	3	4	7	7.0	5	0	4	1	0	7	7.0	
at Abilene Christian	11/21/15	16	1-6	.167	0-0	.000	2-4	.500	5	4	9	8.0	4	0	1	0	0	4	5.5	
ILLINOIS STATE	11/27/15	29	11-14	.786	0-0	.000	0-0	.000	3	8	11	9.0	3	0	2	1	1	22	11.0	
HOUSTON BAPTIST	11/29/15	19	4-9	.444	0-0	.000	3-4	.750	3	4	7	8.5	1	0	1	0	1	11	11.0	
at Texas State	12/03/15	24	6-11	.545	0-0	.000	4-7	.571	3	5	8	8.4	3	0	1	1	0	16	12.0	
at Oklahoma	12/13/15	15	1-8	.125	0-0	.000	0-0	.000	5	0	5	7.8	3	1	4	1	0	2	10.3	
HOWARD PAYNE	12/15/15	* 24	12-15	.800	0-0	.000	5-6	.833	2	10	12	8.4	3	2	1	0	0	29	13.0	
TEXAS A&M-KINGSVILLE	12/19/15	* 20	7-10	.700	0-0	.000	3-5	.600	3	2	5	8.0	2	0	3	1	0	17	13.5	
UT ARLINGTON	12/21/15	* 29	5-10	.500	0-0	.000	2-3	.667	2	8	10	8.2	4	0	2	0	1	12	13.3	
TEXAS SOUTHERN	12/28/15	24	3-10	.300	0-0	.000	2-2	1.000	3	8	11	8.5	2	1	5	2	0	8	12.8	
Totals		3	215	52-101	.515	0-0	.000	24-36	.667	32	53	85	8.5	30	4	24	7	3	128	12.8

Games played: 10
 Minutes/game: 21.5
 Points/game: 12.8
 FG Pct: 51.5
 FT Pct: 66.7

Rebounds/game: 8.5
 Assists/game: 0.4
 Turnovers/game: 2.4
 Assist/turnover ratio: 0.2
 Steals/game: 0.3
 Blocks/game: 0.7

Season	GP-GS	Min./Avg.	Total		3-PT		Career Stats FT		Rebounds				Scoring							
			FG-FGA	Pct.	FG-FGA	Pct.	FT-FTA	Pct.	Off	Def	Tot	Avg.	PF	FO	A	TO	BLK	STL	PTS	Avg.
2015-16	10-3	215/21.5	52-101	.515	0-0	.000	24-36	.667	32	53	85	8.5	30	1	4	24	7	3	128	12.8
2014-15	31-0	542/17.5	97-199	.487	0-0	.000	43-83	.518	69	118	187	6.0	92	6	6	61	13	7	237	7.6
2013-14	30-7	480/16.0	85-160	.531	0-0	.000	49-75	.653	60	108	168	5.6	82	1	4	33	20	13	219	7.3
TOTAL	71-10	1237/17.4	234-460	.509	0-0	.000	116-194	.598	161	279	440	6.2	204	8	14	118	40	23	584	8.2

2015-16 Player Notes:

- CAREER DOUBLE-DOUBLES: 10
 - 2015-16: 3 double-double
 - 2014-15: 3 double-doubles
 - 2013-14: 4 double-doubles
- Scored in double figures in three consecutive games
- Started her first game since freshman year against Howard Payne and scored a career high 29 points on 12 of 15 shooting with 12 rebounds
- Has four games in double figure rebounds



CARLIE HEINEMAN
 G • Sophomore
 San Antonio, Texas • Brennan HS

31

Career Records

Points
 15 vs. Texas (11/15/14)

Rebounds
 7 vs. Howard Payne (12/15/15)

Field Goals
 5 vs. Texas (11/15/14)

3-point FGs
 5 vs. Texas (11/15/14)

Free Throws
 3 vs. Texas A&M-Kingsville (12/19/15)

Assists
 3 (2x) last vs. UT Arlington (12/21/15)

Blocks
 1 (3x) last vs. Texas Southern (12/28/15)

Steals
 2 at Oklahoma (12/13/15)

#31 HEINEMAN, Carlie

Opponent	Date	gs	min	Total		3-Pointers		Free throws		Rebounds				pf	a	t/o	blk	stl	pts	avg
				fg-fga	pct	3fg-fga	pct	ft-fa	pct	off	def	tot	avg							
at Texas	11/14/15	12	1-5	.200	1-3	.333	0-2	.000	0	1	1	1.0	3	0	0	0	0	3	3.0	
at Abilene Christian	11/21/15	dnp	-	-	-	-	-	-	-	-	-	-	-	-	-	-	-	-	-	
ILLINOIS STATE	11/27/15	18	2-5	.400	2-3	.667	0-0	.000	0	1	1	1.0	1	2	2	0	0	6	4.5	
HOUSTON BAPTIST	11/29/15	19	4-7	.571	3-4	.750	2-2	1.000	1	1	2	1.3	0	2	0	0	1	13	7.3	
at Texas State	12/03/15	*	22	3-8	.375	2-4	.500	2-2	1.000	0	0	0	1.0	1	1	0	0	10	8.0	
at Oklahoma	12/13/15	24	4-10	.400	3-6	.500	1-2	.500	0	4	4	1.6	3	2	1	0	2	12	8.8	
HOWARD PAYNE	12/15/15	*	21	3-6	.500	1-4	.250	0-0	.000	2	5	7	2.5	2	2	0	1	0	7	8.5
TEXAS A&M-KINGSVILLE	12/19/15	20	2-5	.400	1-4	.250	3-3	1.000	0	2	2	2.4	0	2	0	0	0	8	8.4	
UT ARLINGTON	12/21/15	26	2-5	.400	2-4	.500	0-0	.000	2	1	3	2.5	1	3	2	0	0	6	8.1	
TEXAS SOUTHERN	12/28/15	*	19	0-5	.000	0-4	.000	0-0	.000	0	0	0	2.2	1	1	0	1	0	7.2	
Totals		3	181	21-56	.375	15-36	.417	8-11	.727	5	15	20	2.2	12	15	5	2	3	65	7.2

Games played: 9
 Minutes/game: 20.1
 Points/game: 7.2
 FG Pct: 37.5
 3FG Pct: 41.7
 FT Pct: 72.7

Rebounds/game: 2.2
 Assists/game: 1.7
 Turnovers/game: 0.6
 Assist/turnover ratio: 3.0
 Steals/game: 0.3
 Blocks/game: 0.2

Season	GP-GS	Min./Avg.	Total		3-PT		Career Stats FT		Rebounds				Scoring							
			FG-FGA	Pct.	FG-FGA	Pct.	FT-FTA	Pct.	Off	Def	Tot	Avg.	PF	FO	A	TO	BLK	STL	PTS	Avg.
2015-16	9-3	181/20.1	21-56	.375	15-36	.417	8-11	.727	5	15	20	2.2	12	0	15	5	2	3	65	7.2
2014-15	20-1	220/11.0	25-78	.321	22-65	.338	2-2	1.000	5	7	12	0.6	15	0	9	10	1	6	74	3.7
TOTAL	29-4	401/13.8	46-134	.343	37-101	.366	10-13	.769	10	22	32	1.1	27	0	24	15	3	9	139	4.8

2015-16 Player Notes:

- Had a career day against Oklahoma with four rebounds and a pair of steals...scored half the team's points in the first half with 11 points off 3-of-4 shooting from 3-point range
- Scored in double figures for the third straight time against Oklahoma with 12 points

2015-16 UTSA WOMEN'S BASKETBALL

Team Records

Most Points

Game - 113 vs. Schreiner (11/24/90)
Season - 2,392 vs. 30 games (1990-91)

Fewest Points

Game - 30 at TCU (11/14/11)
Half - 10 at UT Arlington (1/27/97)
Season - 1,455 in 28 games (2001-02)

Highest Victory Margin

67 (105-38) vs. Prairie View A&M (12/7/93)
67 (96-29) vs. Prairie View A&M (2/10/83)

Highest Loss Margin

57 (39-96) at Texas Tech (12/2/98)

Highest Scoring Average

Season - 79.7 in 30 games (1990-91)

Lowest Scoring Average

Season - 51.9 in 28 games (2001-02)

Most Field Goals Made

Game - 45 vs. Schreiner (11/24/90)
Season - 872 (1983-84)

Fewest Field Goals Made

Game - 8 at TCU (11/14/11)
Season - 516 (2001-02)

Most Field Goals Attempted

Game - 78 at Rice (1/4/10)
Season - 2,069 (2008-09)

Fewest Field Goals Attempted

Game - 36 at Baylor (12/16/96)
36 vs. South Alabama (11/15/11)
Season - 1,367 (1998-99)

Highest Field Goal Percentage

Game - .706 vs. Texas Southern (12/5/96)
Season - .478 (800-1,675); 1984-85

Lowest Field Goal Percentage

Game - .133 (8-60) at TCU (11/14/11)
Season - .344 (549-1,596); 2011-12

Most Free Throws Made

Game - 33 vs. Oral Roberts (2/22/86)
33 at Texas Tech (12/17/88)
Season - 531 (1990-91)

Fewest Free Throws Made

Game - 0 vs. St. Bonaventure (12/21/10)
Season - 286 (1981-82)

Most Free Throws Attempted

Game - 45 vs. Texas State (12/22/13)
Season - 789 (1990-91)

Fewest Free Throws Attempted

Game - 3 vs. St. Mary's (2/14/84)
3 vs. St. Bonaventure (12/21/10)
Season - 427 (1981-82)

Highest Free Throw Percentage

Game - .944 (17-18) vs. UNT (1/22/96)
Season - .726 (462-636); 2010-11

Lowest Free Throw Percentage

Game - .000 (0-3) vs. St. Bonaventure (12/21/10)
Season - .619 (289-467); 1993-94

Most 3-point Field Goals Made

Game - 13 vs. Tulsa (1/5/09)
13 vs. Tulsa (3/11/14)
Season - 229 (2008-09)

Fewest 3-point Field Goals Made

Game - 0 multiple times
Season - 47 (1996-97)

Most 3-point Field Goals Attempted

Game - 37 vs. UT-Arlington (2/14/09)
Season - 698 (2008-09)

Most Rebound

Game - 64 vs. Prairie View A&M (2/8/90)
Season - 1,441 (2008-09)

Fewest Rebounds

Game - 21 at UT-Arlington (1/23/07)
Season - 863 (1998-99)

Most Assists

Game - 34 vs. Southwestern (11/22/83)
34 vs. Oklahoma City (2/27/84)
Season - 529 (1981-82)

Fewest Assists

Game - 1 at Creighton (2/10/87)
Season - 265 (2011-12)

Most Steals

Game - 32 at Hardin Simmons (2/6/84)
Season - 373 (1986-87)

Fewest Steals

Game - 0 multiple times
Season - 163 (1998-99)

Most Blocked Shots

Game - 16 vs. Texas Southern (12/28/15)
Season - 138 (2010-11, 2011-12)

Fewest Blocked Shots

Game - 0 multiple times
Season - 22 (1996-97)

Most Turnovers

Game - 38 vs. Sam Houston St. (1/12/95)
Season - 679 (1991-92)

Fewest Turnovers

Game - 5 vs. McNeese St. (2/5/12)
Season - 420 (1997-98)

Most Fouls

Game - 33 at UC-Irvine (11/26/99)
Season - 653 (1983-84)

Fewest Fouls

Game - 8 vs. A&M-Corpus Christi (2/2/08)
Season - 471 (2002-03)

Most Disqualifications

31 (2011-12)

100-point Games

Score	Opponent	Date
113-89	Schreiner	11/24/90
113-91	Oklahoma City	2/27/84
106-65	Howard Payne	12/15/15
105-38	Prairie View A&M	12/7/93
100-62	St. Mary's	1/24/89
100-46	Southwestern	11/28/83

90-point Games

Score	Opponent	Date
99-93 (OT)	at Tulane	2/16/91
99-65	UTEP	3/1/86
99-73	Texas State	1/3/84
98-84	New Mexico State	12/31/90
97-89 (OT)	at Central Arkansas	2/11/09
96-78	Sam Houston State	1/29/91
96-29	Prairie View A&M	2/10/83
93-62	at Texas A&M-Corpus Christi	2/23/11
93-55	Huston-Tillotson	12/6/08
93-77	SMU	2/9/91
93-48	Texas A&M-Commerce	1/12/87
92-52	Nicholls	2/17/94
92-79	UTEP	2/11/84
92-56	Huston-Tillotson	1/29/83
92-57	Texas Lutheran	12/2/82
91-30	Texas Southern	12/5/96
90-89	Tulsa	3/11/14
90-89 (2OT)	vs. Miami (Ohio)	12/29/07
90-53	Southeastern Louisiana	3/3/01
90-41	Hardin-Simmons	2/20/84

Individual Records

Points

Game - 40 by Starlite Williams vs. St. Mary's (12/16/86)
 Season - 583 by Tammy Rogers (1990-91)
 Career - 1,607 by Starlite Williams (1983-87)

Scoring Average

Season - 20.7 by Starlite Williams (1986-87)
 Career - 16.6 by Starlite Williams (1983-87)

Field Goals Made

Game - 16 by Starlite Williams vs. St. Mary's (12/16/86)
 Season - 229 by Starlite Williams (1986-87)
 Career - 674 by Starlite Williams (1983-87)

Field Goals Attempted

Game - 33 by Tammy Rogers vs. Alaska Anchorage (2/23/91)
 Season - 482 by Tammy Rogers (1990-91)
 Career - 1,305 by Starlite Williams (1983-87)

Field Goal Percentage (minimum attempts)

Game (10) - .928 (13-14) by Starlite Williams vs. Alabama (12/5/86)
 Season (200) - .657 (184-280) by Margaret Martinovich (1984-85)
 Career - .566 (589-1,039) by Margaret Martinovich (1981-85)

Free Throws Made

Game - 17 by Amber Gregg vs. Texas State (2/26/11)
 17 by Monica Gibbs vs. Texas State (3/4/09)
 Season - 167 by Monica Gibbs (2008-09)
 167 by Tammy Rogers (1990-91)
 Career - 553 by Angel Singleton (1993-98)

Free Throws Attempted

Game - 24 vs. Monica Gibbs vs. Texas State (3/4/09)
 Season - 282 by Angel Singleton (1996-97)
 Career - 811 by Angel Singleton (1993-98)

Free Throw Percentage (minimum)

Game (10) - 1.000 (12-12) by Whitney York vs. Central Arkanas (2/10/10)
 1.000 (11-11) by Starlite Williams vs. Nevada (11/29/86)
 Season (25) - .903 (28-31) by Rhonda Hoffman (1983-84)
 Career (100) - .822 (259-315) by Amber Gregg (2007-11)

3-point Field Goals Made

Game - 8 by Terrie Davis vs. Lamar (1/12/08)
 Season - 82 by Terrie Davis (2007-08)
 Career - 200 by Amber Gregg (2007-11)

Consecutive 3-pointers Made

8 by Nicole Dunson

3-point Field Goals Attempted

Game - 16 by Jordan Stark vs. UT-Arlington (3/14/09)
 16 by Simone Young at TCU (12/5/12)
 Season - 224 by Terrie Davis (2007-08)
 Career - 633 by Amber Gregg (2007-11)

3-point Percentage (minimum)

Game (5) - .875 (7-8) by Rosie Smith vs. SFA (1/8/98)
 Season (75) - .441 (52-118) by Nicole Dunson (2005-06)
 Career (150) - .419 (98-234) by Nicole Dunson (2004-06)

Rebounds

Game - 24 by Margaret Martinovich vs. A&M-Kingsville (11/27/81)
 Season - 351 by Onika Anderson (2008-09)
 Career - 990 by Monica Gibbs (2005-09)

Rebound Average (minimum)

Season (25) - 10.6 (26 games) by Onika Anderson (2008-09)
 Career (50) - 9.8 (59 games) by Onika Anderson (2007-09)

Assists

Game - 15 by Monica Gibbs vs. Huston-Tillotson (12/6/08)
 Season - 221 by Monica Gibbs (2008-09)
 Career - 693 by Monica Gibbs (2005-09)

Steals

Game - 9 by Rhonda Hoffman vs. Sam Houston State (1/27/84)
 Season - 92 by Starlite Williams (1986-87)
 Career - 281 by Starlite Williams (1983-87)

Blocked Shots

Game - 8 by Alysse Davis vs. Huston-Tillotson (11/14/10)
 8 by Kim Duncan vs. Texas State (1/24/85)
 Season - 78 by Alysse Davis (2010-11)
 Career - 105 by Whitney Wright (2009-13)

Games Played

123 by Monica Gibbs (2005-09)

Attendance Records

Date	Opponent	Results	Attendance
3/3/12	UT-Arlington	L, 75-65	2,611
2/7/04	McNeese State	W, 64-56 (OT)	2,311
1/27/96	Texas State	L, 78-57	2,021
2/9/91	SMU	W, 93-77	2,000
11/12/10	Our Lady of the Lake	W, 79-66	1,789
1/29/94	North Texas	L, 74-65	1,786
2/26/05	UT-Arlington	W, 48-46	1,736
2/24/07	A&M-Corpus Christi	W, 61-43	1,699
11/19/10	No. 23 TCU	L, 83-59	1,563
1/21/04	Texas State	L, 44-43	1,445

2015-16 UTSA WOMEN'S BASKETBALL

Opponent Records

(against UTSA)

Individual Opponent Records

Single Game

Points Scored

45 by Kelia Shelton, Louisiana Tech (2/7/13)

Points Scored/Conference Game

45 by Kelia Shelton, Louisiana Tech (2/7/13)

Field Goals

16 by Lisa Foss, No. Illinois (2/22/91)

16 by Kelia Shelton, Louisiana Tech (2/7/13)

Field Goals/Conference Game

16 by Kelia Shelton, Louisiana Tech (2/7/13)

Free Throws

17 by Tammy Terry, Oklahoma City (2/27/84)

Free Throws/Conference Game

17 by Tammy Terry, Oklahoma City (2/27/84)

Free Throw Attempts

21 by Katrina Price, SFA (3/5/98)

Free Throw Attempts/Conference

21 by Katrina Price, SFA (3/5/98)

3-Point FG

9 by Carin Stites, Oklahoma (1/21/91)

9 by Angela Branch, ULM (12/30/93)

3-Point FG/Conference Game

9 by Angela Branch, ULM (12/30/93)

Rebounds

21 by Kris Veatch, New Mexico St., (1/23/88)

21 by Yolanda Wilkerson, Texas St. (12/24/96)

Rebounds/Conference Game

21 by Yolanda Wilkerson, Texas St. (12/24/96)

Assists

14 by Amy Sheiron, Sam Houston (2/18/99)

Turnovers

12 by Lakeita Richardson, Sam Houston (2/10/94)

Blocked Shots

8 by Cheyenne Parker, Middle Tenn. (1/29/15)

8 by Kianna Vines, Texas Southern (12/28/15)

Steals

11 by Leslie Hale, Sam Houston (2/11/95)

Team Records

Single Game

Points Scored

115 by Houston (12/18/89)

Points Scored/Conference Game

102 by Stephen F. Austin (2/3/96)

Points Scored in a Half

66 (1st half) by Houston (12/18/89)

60 (2nd half) by Houston (11/27/90)

Fewest Points Scored

26 by Prairie View A&M (1/29/83)

Fewest Points/Conference Game

37 by Texas A&M-Corpus Christi (2/17/10)

Fewest Points Scored in a Half

8 (1st half) by Prairie View A&M (12/3/96)

Most Field Goals Made

47 by Houston (11/27/90)

Fewest Field Goals Made

7 by Schreiner (11/15/09)

Fewest Field Goals in a Half

1 by Prairie View A&M (12/3/96); Schreiner (11/15/09)

Fewest Field Goals/Conference Game

12 by Southeastern Louisiana (1/4/01)

Most FG Attempts

90 by Houston (11/27/90)

Highest FG Percentage

67.8% (40-59) by Stephen F. Austin (1/8/00)

Highest FG Percentage in a Half

72% by Baylor (12/16/96)

Lowest FG Percentage

14% (7-50) by Schreiner (11/15/09)

Most Free Throws Made

33 by Oral Roberts (2/22/86); Texas Tech (12/17/88)

Fewest Free Throws Made

1 by 5 opponents, most recent by Texas St. (1/28/09)

Most 3-Point FG

13 by Oklahoma (1/21/91)

13 by Howard Payne (12/15/15)

Most 3-Point FG Made/Conference Game

11 by Sam Houston St. (1/19/06)

Most 3-Point FG Attempts

40 by New Mexico St. (12/31/90)

Most 3-Point FG Attempts/Conference Game

34 by Nicholls (2/19/11)

Highest 3-Point FG Percentage

66.7% by four opponents, most recent by UAB (6-of-9)(1/31/15)

Most Rebounds

64 by Prairie View A&M (2/8/90); La.-Monroe (12/30/93)

Most Rebounds/Conference Game

64 by Louisiana-Monroe (12/30/93)

Most Assists

38 by Northwestern St. (2/20/93)

Most Assists/Conference Game

38 by Northwestern St. (2/20/93)

Most Turnovers

43 by A&M-Commerce (1/12/87)

Most Fouls

36 by Angelo St. (1/11/82)

Most Fouls/Conference Game

27 by Northwestern St. (1/30/99); Lamar (2/3/05)

Fewest Fouls

7 by McNeese St. (2/19/94)

Most Blocks

13 by Idaho (1/26/13)

13 by Texas Southern (12/28/15)

Most Steals

31 by Houston (11/27/90)

ALL-TIME VS. RANKED OPPONENTS

By Date		
Dec. 5, 1985	vs. No. 25 Houston	L, 52-63
Dec. 13, 1986	at No. 22 Texas Tech	L, 62-75
Jan. 9, 1988	at No. 25 Stephen F. Austin	L, 58-81
Dec. 19, 1988	vs. No. 19 Stephen F. Austin	L, 59-66
Nov. 22, 1997	vs. No. 19 Texas Tech	L, 44-57
Dec. 2, 1998	at No. 12 Texas Tech	L, 39-96
Dec. 30, 2001	vs. No. 19 Auburn	L, 50-73
Dec. 31, 2003	vs. No. 11 Kansas State	L, 45-75
Dec. 19, 2005	at No. 10 Arizona State	L, 64-78
Dec. 20, 2006	vs. No. 13 Purdue	L, 50-75
March 22, 2008	vs. No. 8 Texas A&M	L, 52-91
Nov. 16, 2008	at No. 24 TCU	L, 60-73
March 22, 2009	vs. No. 5 Baylor	L, 82-87 (OT)
Nov. 13, 2009	at No. 10 Texas	L, 60-71
Dec. 19, 2009	vs. No. 6 Florida State	L, 50-65
Nov. 19, 2010	vs. No. 23 TCU	L, 59-83
Nov. 15, 2014	vs. No. 9 Texas	L, 68-48
Jan. 24, 2015	vs. No. 24 WKU	W, 64-63
Nov. 14, 2015	at No. 11 Texas	L, 53-90
Dec. 13, 2015	at No. 17 Oklahoma	L, 80-41
		1-19

By Rank		
March 22, 2009	vs. No. 5 Baylor	L, 82-87 (OT)
Dec. 19, 2009	vs. No. 6 Florida State	L, 50-65
March 22, 2008	vs. No. 8 Texas A&M	L, 52-91
Nov. 15, 2014	vs. No. 9 Texas	L, 68-48
Dec. 19, 2005	at No. 10 Arizona State	L, 64-78
Nov. 13, 2009	at No. 10 Texas	L, 60-71
Nov. 14, 2015	at No. 11 Texas	L, 53-90
Dec. 31, 2003	vs. No. 11 Kansas State	L, 45-75
Dec. 2, 1998	at No. 12 Texas Tech	L, 39-96
Dec. 20, 2006	vs. No. 13 Purdue	L, 50-75
Dec. 13, 2015	at No. 17 Oklahoma	L, 80-41
Dec. 19, 1988	vs. No. 19 Stephen F. Austin	L, 59-66
Nov. 22, 1997	vs. No. 19 Texas Tech	L, 44-57
Dec. 30, 2001	vs. No. 19 Auburn	L, 50-73
Dec. 13, 1986	at No. 22 Texas Tech	L, 62-75
Nov. 19, 2010	vs. No. 23 TCU	L, 59-83
Nov. 16, 2008	at No. 24 TCU	L, 60-73
Jan. 24, 2015	vs. No. 24 WKU	W, 64-63
Dec. 5, 1985	vs. No. 25 Houston	L, 52-63
Jan. 9, 1988	at No. 25 Stephen F. Austin	L, 58-81
		1-19

2015-16 UTSA WOMEN'S BASKETBALL

Career Top-10

Points

Name	Yr.	Points
1. Starlite Williams	1983-87	1,607
2. Angel Singleton	1994-98	1,565
3. Margaret Martinovich	1981-85	1,480
4. Monica Gibbs	2005-09	1,460
5. Tisha Boldt	1986-91	1,379
6. Kamra King	2011-15	1,367
7. Tammy Rogers	1987-91	1,343
8. Michelle Martin	1989-93	1,192
9. Sharon Wilson	1985-89	1,173
10. Amber Gregg	2007-11	1,143

Scoring Average

Name	Games	Avg
1. Starlite Williams (83-87)	97	16.5
2. Rosie Smith (97-99)	54	16.3
3. Valerie Wells (82-84)	54	15.3
4. Angel Singleton (93-98)	105	14.9
5. Nikki Hendrix (01-04)	78	14.4
6. Vivian Ewalefo (05-07)	60	14.1
Denise Forestier (990-92)	38	14.1
Karen Gaskin (88-90)	54	14.1
9. Tammy Rogers (87-91)	96	14.0
10. Margaret Martinovich (81-85)	108	13.7

Field Goals Made

Name	Games	FG
1. Starlite Williams (83-87)	97	674
2. Margaret Martinovich (81-85)	108	589
3. Tisha Boldt (86-91)	111	561
4. Angel Singleton (93-98)	105	506
5. Kim Maxwell (81-84)	81	502
6. Monica Gibbs (05-09)	123	490
7. Sharon Wilson (85-89)	102	460
8. Tammy Rogers (87-91)	96	451
9. Michelle Martin (89-93)	103	444
10. Nikki Hendrix (01-04)	81	426

Field Goal Percentage (min. 200)

Name	Games	FG%
1. Margaret Martinovich (81-85)	108	.567
2. Onika Anderson (07-09)	59	.527
3. Starlite Williams (83-87)	97	.516
4. Valerie Wells (82-84)	54	.514
5. Angel Singleton (93-98)	105	.511
6. Karen Gaskin (88-90)	54	.509
7. Tisha Boldt (86-91)	111	.505
8. Kim Maxwell (81-84)	81	.479
9. Renda Churman (97-01)	108	.475
Debbie Groves (84-88)	101	.475

Rebounds

Name	Games	Reb
1. Monica Gibbs (05-09)	123	990
2. Margaret Martinovich (81-85)	108	778
3. Angel Singleton (93-98)	105	730
4. Tisha Boldt (86-91)	111	675
5. Starlite Williams (83-87)	97	636
6. Michelle Martin (89-93)	103	590
7. Onika Anderson (07-09)	59	579
8. Debbie Groves (84-88)	101	550
9. Tiffany Williams (90-94)	102	544
10. Mannasha Bell (2011-15)	98	543

Rebounding Average

Name	Games	Avg
1. Onika Anderson (07-09)	59	9.8
2. Ashleigh Franklin (09-11)	58	8.7
3. Monica Gibbs (05-09)	123	8.0
4. Vivian Ewalefo (05-07)	60	7.6
5. Valerie Wells (82-84)	54	7.4
6. Margaret Martinovich (81-85)	108	7.2
7. Angel Singleton (93-98)	105	7.0
8. Keelah Williams (98-00)	52	6.6
Starlite Williams (83-87)	97	6.6
10. Mantha Emory (93-95)	52	6.4

3-point Field Goals Made

Name	Games	3-pt
1. Amber Gregg (07-11)	118	200
2. Terrie Davis (04-08)	118	195
3. Ashley Spaletta (2011-15)	119	174
4. Kamra King (2011-15)	121	128
5. Philicia Ross (90-94)	96	121
6. Jordan Stark (07-09)	53	111
7. Alysse Davis (08-11)	57	102
8. Nicole Dunson (04-06)	54	98
9. Rosie Smith (96-98)	54	94
10. Tammy Rogers (87-91)	96	86

Assists

Name	Games	Ast
1. Monica Gibbs (05-09)	123	693
2. Tammy Rogers (87-91)	96	377
3. Rhonda Hoffman (83-87)	102	375
4. Sharon Wilson (85-89)	102	355
5. Joyce Howard (96-98)	53	333
6. Shelley Seale (81-83)	54	296
7. Kim Reed (01-05)	112	272
8. Karen Kroen (83-87)	73	263
9. Kim Maxwell (81-84)	81	259
10. Whitney York (2007-13)	96	249

Steals

Name	Games	Steals
1. Starlite Williams (83-87)	97	281
2. Kamra King (2011-15)	121	240
3. Michelle Martin (89-93)	103	227
4. Sharon Wilson (85-89)	102	223
5. Rhonda Hoffman (83-87)	102	222
6. Monica Gibbs (05-09)	123	207
7. Terrie Davis (04-08)	118	173
8. Tammy Rogers (87-91)	96	165
9. Ashley Spaletta (2011-15)	119	153
10. Latifa Northern (98-02)	109	144

Blocks

Name	Games	Bk
1. Whitney Wright (09-13)	114	105
2. Alysse Davis (08-11)	57	98
3. Kim Duncan (83-85)	55	93
4. Starlite Williams (83-87)	97	88
5. Mantha Emory (93-95)	52	81
6. Lacy Mingee (01-06)	113	70
7. Monica Gibbs (05-09)	90	69
8. Katie Sandefur (02-06)	116	66
Ryba Pawlaczyk (07-09)	60	66
10. Keelah Wilson (98-00)	52	61

Games Played

Name	Yrs.	Games
1. Monica Gibbs	2005-09	123
2. Kamra King	2011-15	121
3. Ashley Spaletta	2011-15	119
4. Terrie Davis	2004-08	118
Amber Gregg	2007-11	118
6. Katie Sandefur	2002-06	116
7. Lacy Mingee	2001-06	115
8. Whitney Wright	2009-13	114
9. Kim Reed	2001-05	112
10. Tisha Boldt	1987-91	111

Games Started

Name	Yrs.	Starts
1. Kamra King	2011-15	118
2. Monica Gibbs	2005-09	113
3. Angel Singleton	1994-98	101
4. Terrie Davis	2004-08	99
5. Starlite Williams	1983-87	92
6. Tammy Rogers	1987-91	90
Tisha Boldt	1986-91	87
8. Amber Gregg	2007-11	86
9. Latifa Northern	1998-02	84
Whitney York	2008-13	84

2015-16 UTSA WOMEN'S BASKETBALL

**2015-16 UTSA Roadrunners Basketball
UTSA Combined Team Statistics (as of Dec 29, 2015)
All games**

RECORD:	OVERALL	HOME	AWAY	NEUTRAL
ALL GAMES	4-6	4-2	0-4	0-0
CONFERENCE	0-0	0-0	0-0	0-0
NON-CONFERENCE	4-6	4-2	0-4	0-0

##	Player	gp-gs	min	Total			3-Point		F-Throw		Rebounds			pf	dq	a	to	blk	stl	pts	avg	
				fg-fga	fg%	3fg-fga	3fg%	ft-fga	ft%	off	def	tot	avg									
30	SMITH, Tesha	10-3	215	21.5	52-101	.515	0-0	.000	24-36	.667	32	53	85	8.5	30	1	4	24	7	3	128	12.8
21	ELONU, Akunna	10-9	220	22.0	34-68	.500	3-16	.188	14-19	.737	26	33	59	5.9	28	1	6	18	4	9	85	8.5
12	MITCHELL-COLE, Nia	9-9	226	25.1	27-71	.380	5-17	.294	13-23	.565	12	29	41	4.6	17	0	12	13	10	19	72	8.0
03	DUKES, Alexis	10-9	231	23.1	30-79	.380	7-28	.250	9-14	.643	3	21	24	2.4	22	1	23	25	2	13	76	7.6
31	HEINEMAN, Carlie	9-3	181	20.1	21-56	.375	15-36	.417	8-11	.727	5	15	20	2.2	12	0	15	5	2	3	65	7.2
01	KIEJDROWSKA, Kasia	10-1	198	19.8	26-72	.361	12-35	.343	4-8	.500	6	35	41	4.1	26	2	7	10	1	6	68	6.8
04	CHIDOMERE, Crystal	10-0	176	17.6	22-55	.400	1-7	.143	5-7	.714	8	19	27	2.7	24	1	18	26	6	17	50	5.0
11	ANASTASIESKA, Sara	9-0	125	13.9	14-38	.368	5-15	.333	5-6	.833	4	19	23	2.6	16	0	5	17	2	2	38	4.2
23	THORNTON, Dempse	10-7	171	17.1	17-35	.486	0-1	.000	4-9	.444	9	23	32	3.2	16	0	6	17	6	3	38	3.8
02	HERGOTT, Mathilde	10-9	245	24.5	16-59	.271	5-25	.200	0-2	.000	2	22	24	2.4	22	0	23	29	9	10	37	3.7
05	HEARD, Alana	1-0	12	12.0	1-3	.333	0-0	.000	0-0	.000	0	2	2	2.0	0	0	0	3	0	0	2	2.0
Team											21	20	41		1		1					
Total.....		10	2000		260-637	.408	53-180	.294	86-135	.637	128	291	419	41.9	214	6	119	188	49	85	659	65.9
Opponents.....		10	2000		209-604	.346	76-221	.344	154-221	.697	129	259	388	38.8	166	-	113	170	44	81	648	64.8

TEAM STATISTICS	UTSA	OPP	Date	Opponent	Score	Att.
SCORING	659	648	11/14/15	at Texas	L 53-90	2596
Points per game	65.9	64.8	11/21/15	at Abilene Christian	L 60-79	1000
Scoring margin	+1.1	-	11/27/15	ILLINOIS STATE	w 77-51	0
FIELD GOALS-ATT	260-637	209-604	11/29/15	HOUSTON BAPTIST	w 79-50	400
Field goal pct	.408	.346	12/03/15	at Texas State	L 64-72	1309
3 POINT FG-ATT	53-180	76-221	12/13/15	at Oklahoma	L 41-80	4086
3-point FG pct	.294	.344	12/15/15	HOWARD PAYNE	w 106-65	265
3-pt FG made per game	5.3	7.6	12/19/15	TEXAS A&M-KINGSVILLE	w 88-51	250
FREE THROWS-ATT	86-135	154-221	12/21/15	UT ARLINGTON	L 47-51	353
Free throw pct	.637	.697	12/28/15	TEXAS SOUTHERN	L 44-59	297
F-Throws made per game	8.6	15.4				
REBOUNDS	419	388				
Rebounds per game	41.9	38.8				
Rebounding margin	+3.1	-				
ASSISTS	119	113				
Assists per game	11.9	11.3				
TURNOVERS	188	170				
Turnovers per game	18.8	17.0				
Turnover margin	-1.8	-				
Assist/turnover ratio	0.6	0.7				
STEALS	85	81				
Steals per game	8.5	8.1				
BLOCKS	49	44				
Blocks per game	4.9	4.4				
ATTENDANCE	1565	8991				
Home games-Avg/Game	6-261	4-2248				
Neutral site-Avg/Game	-	0-0				

* - Conference game

Score by Periods	1st	2nd	3rd	4th	Totals
UTSA	166	162	160	171	659
Opponents	154	158	155	181	648

2015-16 UTSA WOMEN'S BASKETBALL

Official Basketball Box Score -- Game Totals -- Final Statistics
Texas Southern vs UTSA
12/28/15 2 pm at San Antonio, Texas (Convocation Center)

Texas Southern 59 • 4-6

##	Player		Total			3-Ptr			Rebounds			PF	TP	A	TO	Blk	Stl	Min
			FG-FGA	FG-FGA	FT-FTA	FG-FGA	FG-FGA	FT-FTA	Off	Def	Tot							
02	CHEADLE, Toni	f	3-8	0-0	1-4				2	3	5	2	7	3	3	3	3	35
45	VINES, Kianna	c	2-9	0-0	0-2				1	5	6	4	4	0	0	8	0	37
01	SIDNEY, Brianna	g	5-12	2-6	7-8				4	9	13	1	19	1	2	0	1	38
03	KENNERSON, Joyce	g	4-7	2-3	8-9				1	7	8	0	18	2	3	0	0	31
25	PARKER, Jazmin	g	2-17	0-2	1-3				2	3	5	1	5	1	2	0	2	33
12	FORTE, Ladeyh		1-3	0-1	2-2				0	2	2	0	4	1	3	0	1	12
21	POUENGUE, Makenna		0-1	0-0	0-0				0	0	0	1	0	0	1	0	0	2
22	MCELRATH, Bresia		1-1	0-0	0-0				1	2	3	3	2	0	1	1	0	6
33	DENNIS, Amari		0-2	0-0	0-0				0	0	0	1	0	0	0	1	0	6
Team									6	4	10			1				
Totals			18-60	4-12	19-28				17	35	52	13	59	8	16	13	7	200

FG % 1st Half: 9-36 25.0% 2nd half: 9-24 37.5% Game: 18-60 30.0%
 3FG % 1st Half: 2-7 28.6% 2nd half: 2-5 40.0% Game: 4-12 33.3%
 FT % 1st Half: 4-9 44.4% 2nd half: 15-19 78.9% Game: 19-28 67.9%

Deadball
Rebounds
5

UTSA 44 • 4-6

##	Player		Total			3-Ptr			Rebounds			PF	TP	A	TO	Blk	Stl	Min
			FG-FGA	FG-FGA	FT-FTA	FG-FGA	FG-FGA	FT-FTA	Off	Def	Tot							
12	MITCHELL-COLE, Niaga	f	2-7	0-0	0-2				3	3	6	3	4	0	2	5	0	27
21	ELONU, Akunna	f	4-9	0-0	0-0				4	6	10	1	8	0	2	2	3	34
23	THORNTON, Dempsey	c	2-7	0-0	0-0				2	2	4	0	4	1	0	1	0	15
03	DUKES, Alexis	g	4-14	0-3	1-2				0	1	1	5	9	2	3	1	3	24
31	HEINEMAN, Carlie	g	0-5	0-4	0-0				0	0	0	1	0	1	0	1	0	19
01	KIEJDROWSKA, Kasia		4-10	1-5	0-0				0	1	1	1	9	0	1	1	0	15
02	HERGOTT, Mathilde		0-5	0-3	0-0				0	4	4	3	0	3	1	3	0	31
04	CHIDOMERE, Crystal		1-5	0-1	0-0				1	2	3	2	2	1	1	0	2	11
30	SMITH, Tesha		3-10	0-0	2-2				3	8	11	2	8	1	5	2	0	24
Team									5	1	6							
Totals			20-72	1-16	3-6				18	28	46	18	44	9	15	16	8	200

FG % 1st Half: 12-32 37.5% 2nd half: 8-40 20.0% Game: 20-72 27.8%
 3FG % 1st Half: 0-5 0.0% 2nd half: 1-11 9.1% Game: 1-16 6.3%
 FT % 1st Half: 3-4 75.0% 2nd half: 0-2 0.0% Game: 3-6 50.0%

Deadball
Rebounds
2,1

Officials: Meadow Overstreet, Travis Jones, Britton Sherry
 Technical fouls: Texas Southern-None. UTSA-None.
 Attendance: 297
 Game #1 of the Rae & Craig Blair Memorial UTSA Holiday Classic
 NCAA Record 29 blocks (combined)

Score by periods	1st	2nd	3rd	4th	Total
Texas Southern	14	10	10	25	59
UTSA	12	15	4	13	44

	In	Off	2nd	Fast	
Points	Paint	T/O	Chance	Break	Bench
TSUW	22	15	18	8	6
UTSA	26	9	10	4	19

Last FG - TSUW 4th-01:34, UTSA 4th-00:39.
 Largest lead - TSUW by 15 4th-00:15, UTSA by 5 3rd-09:17.
 TSUW led for 23:58. UTSA led for 12:46. Game was tied for 03:13.

Score tied - 6 times.
 Lead changed - 11 times.