

# ARIZONA

## BASKETBALL

7 NCAA TOURNAMENT APPEARANCES | 1997 | 1998 | 1999 | 2000 | 2003 | 2004 | 2005

**Daniel Berk**

**Assistant Director of Athletics Communications**

1 National Championship Drive, McKale 106, Tucson, AZ

O: (520) 621-1814 | C: (314) 363-5842

[dberkf@arizona.edu](mailto:dberkf@arizona.edu) | [www.ArizonaWildcats.com](http://www.ArizonaWildcats.com)

Twitter: @ArizonaWBBall | Facebook.com/ArizonaWomensBasketball

### SCHEDULE/RESULTS

#### NOVEMBER

|           |                                   |                 |
|-----------|-----------------------------------|-----------------|
| <b>10</b> | <b>E. NEW MEXICO (EX)W, 71-37</b> |                 |
| <b>14</b> | at Toledo                         | W, 62-59        |
| <b>18</b> | <b>HOWARD</b>                     | <b>W, 65-28</b> |
| 21        | at San Diego                      | L, 59-54        |
| <b>23</b> | <b>KANSAS</b>                     | <b>W, 67-52</b> |
| 27        | North Texas                       | 1 p.m.          |

#### DECEMBER

|           |                       |               |
|-----------|-----------------------|---------------|
| <b>2</b>  | <b>NEW MEXICO ST.</b> | <b>7 p.m.</b> |
| <b>5</b>  | <b>PACIFIC</b>        | <b>1 p.m.</b> |
| <b>10</b> | <b>LOUISIANA TECH</b> | <b>7 p.m.</b> |
| 19        | SMU %                 | 12:15 p.m.    |
| 20        | Florida Gulf Coast %  | 10 a.m.       |
| 21        | Gardner-Webb %        | 2:30 p.m.     |
| <b>29</b> | <b>GEORGE MASON</b>   | <b>2 p.m.</b> |

#### JANUARY

|           |                           |               |
|-----------|---------------------------|---------------|
| <b>2</b>  | <b>16 STANFORD*#</b>      | <b>3 p.m.</b> |
| <b>4</b>  | <b>CALIFORNIA*#</b>       | <b>8 p.m.</b> |
| 8         | at Washington State*      | 8 p.m.        |
| 10        | at Washington *#          | 3 p.m.        |
| <b>15</b> | <b>UTAH*</b>              | <b>7 p.m.</b> |
| <b>17</b> | <b>COLORADO*#</b>         | <b>2 p.m.</b> |
| 22        | at 15 Arizona State*#     | 7 p.m.        |
| <b>24</b> | <b>15 ARIZONA STATE*#</b> | <b>5 p.m.</b> |
| 29        | at 10 Oregon State*#      | 7 p.m.        |
| 31        | at Oregon*#               | 1 p.m.        |

#### FEBRUARY

|           |                                 |               |
|-----------|---------------------------------|---------------|
| <b>6</b>  | <b>USC*#</b>                    | <b>8 p.m.</b> |
| <b>8</b>  | <b>UCLA*</b>                    | <b>1 p.m.</b> |
| 12        | at 16 Stanford*#                | 8:30 p.m.     |
| 14        | at California*#                 | 1 p.m.        |
| <b>19</b> | <b>WASHINGTON*</b>              | <b>7 p.m.</b> |
| <b>21</b> | <b>WASHINGTON STATE* 1 p.m.</b> |               |
| 26        | at UCLA*#                       | 9 p.m.        |
| 28        | at USC*                         | 3 p.m.        |

#### MARCH

|     |                   |     |
|-----|-------------------|-----|
| 3-6 | Pac-12 Tournament | TBA |
|-----|-------------------|-----|

(EX)- Exhibition contest

% - Puerto Rico Classic

\* - Pac-12 Conference game

#- Game to be televised on Pac-12 Networks

All times are local Arizona time and subject to change

Home games, in **BOLD**

### GAME AT A GLANCE

**DATE:** November 27, 2015  
**VENUE:** The Super Pit  
**CAPACITY:** 10,500  
**SERIES:** Arizona leads 3-0  
**LAST MEETING:** 11/28/12: Arizona 71, North Texas 66  
**RADIO:** Arizona IMG Sports Network/ KTUC AM 1400 (Derrick Palmer)  
**LIVE STREAM:**  
**LIVE STATS:** [meangreensports.com](http://meangreensports.com)  
**TWITTER:** @ArizonaWBBall  
**FACEBOOK:** [Facebook.com/ArizonaWomensBasketball](https://www.facebook.com/ArizonaWomensBasketball)  
**INSTAGRAM:** @arizonawbball

### QUICK NOTES

- ▶ Arizona will look to improve to 4-1 for the fourth time under Coach Niya Butts on Friday when it faces North Texas. The Wildcats are coming off a 67-52 home win over Kansas.
- ▶ The Wildcats and Mean Green will hook up for the fourth time on Friday. Arizona has won the three previous matchups, with the most recent one coming in 2012. The Wildcats won 71-66. Senior guard Keyahndra Cannon is the only current Wildcat to have played in that game. She had three points and two rebounds in 20 minutes.
- ▶ Through four games, the Wildcats are shooting .528 from 3-point range, hitting 28 of 53 attempts. The .528 percentage is tops in the country.
- ▶ Arizona had three players -- Malena Washington, Taryn Griffey and JaLea Bennett -- score in double figures in the win over Kansas. Griffey is averaging 11.8 points per game to lead the Wildcats this season and Washington is second at 10.8. Bennett is averaging eight points a contest.
- ▶ Juniors Dejza James and Breanna Workman have been strong on the glass so far this season. James is pulling down 7.5 rebounds per game and Workman is at 6.3.
- ▶ Arizona has pulled down more rebounds than its opponent in each game this season and has also shot a better percentage from the floor in each matchup.



**ARIZONA**  
WILDCATS

**Record:** 3-1  
**Ranking (AP/Coaches):** -/-  
**Coach:** Niya Butts  
**Alma Mater:** Tennessee '00  
**Career Record/Yrs:** 92-129/8th  
**School Record/Yrs:** Same  
**'14-15 Record:** 10-20 (3-15 Pac-12)  
**Last Game:** Arizona 67, Kansas 52



**NORTH TEXAS**  
MEAN GREEN

**Record:** 1-2  
**Ranking (AP/Coaches):** -/-  
**Coach:** Jalie Mitchell  
**Alma Mater:** North Texas, '02  
**Career Record:** 1-2/ 1st  
**School Record/Yrs:** Same  
**'14-15 Record:** 5-24 (4-14 Conference USA)  
**Last Game:** Texas St. 64, UNT 62

### LAST GAME'S STARTING 5

| No. | Name                 | Position | Ht. | Class-Exp. | Points | Rebounds | Assists | Steals | Minutes |
|-----|----------------------|----------|-----|------------|--------|----------|---------|--------|---------|
| 33  | JaLea Bennett (4)    | G        | 6-0 | So.-1L     | 8.0    | 2.5      | 0.8     | 0.5    | 20.3    |
| 3   | Taryn Griffey (4)    | G        | 5-7 | RFr.-HS    | 11.8   | 2.8      | 3.0     | 0.8    | 22.3    |
| 15  | Keyahndra Cannon (4) | G        | 5-9 | Sr.-3L     | 5.0    | 2.3      | 1.0     | 1.0    | 25.3    |
| 42  | A'Shanti Coleman (4) | F        | 6-2 | Fr.-HS     | 3.5    | 2.3      | 0.3     | 1.0    | 19.3    |
| 0   | Breanna Workman (4)  | F        | 6-1 | Jr.-2L     | 5.5    | 6.3      | 1.8     | 1.0    | 26.3    |

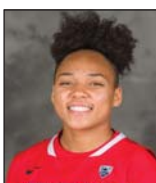
( ) starts this season

### 2 MORE TO WATCH



#### DEJZA JAMES, FORWARD, ELK GROVE, CALIF.

After sitting out the first two games of the season, the junior post player made her presence felt in her season debut. James played 21 minutes against San Diego on Saturday and had eight points and ten rebounds. She pulled down eight defensive rebounds and two on the offensive end. She was 4 of 10 from the floor and added a steal. A veteran, who played in all 30 games last season, James will be a valuable piece for the Wildcats down low.



#### MALENA WASHINGTON, GUARD, BEAUMONT, TEXAS

The junior has become a super sub for the Wildcats and is second on the team, averaging nine points per game. Washington is 6 of 14 from 3-point distance so far this season, shooting 43 percent. She had just nine 3-pointers last season, but is playing more shooting guard this season with Taryn Griffey back in the rotation. Washington is also tied for the lead in steals and assists.



# ROSTER INFORMATION

## NUMERICAL

| No. | Name                   | Pos. | Ht.  | Cl.-Exp. | Hometown/High School (Last School)                  |
|-----|------------------------|------|------|----------|-----------------------------------------------------|
| 0   | Breanna Workman        | F    | 6-1  | Jr.-2L   | Las Vegas, Nev. (Centennial HS)                     |
| 3   | Taryn Griffey          | G    | 5-7  | R-Fr.-HS | Seattle, Wash. (Dr. Phillips HS)                    |
| 10  | Lauren Evans           | G    | 5-11 | R-Jr.-TR | Phoenix, Ariz./Hamilton HS (Virginia Tech)          |
| 11  | Cherice Harris         | G    | 5-8  | So.-1L   | Rancho Cucamonga, Calif. (Etiwanda HS)              |
| 13  | Eugenie Simonet-Keller | C    | 6-8  | Fr. - HS | La Biot, France (IMG Academy)                       |
| 14  | Malena Washington      | G    | 5-6  | Jr.-1L   | Baumont, Texas/ Central HS (Tyler JC)               |
| 15  | Keyahndra Cannon       | G    | 5-9  | Sr.-3L   | San Diego, Calif. (Mission Bay HS)                  |
| 20  | Farrin Bell            | G    | 6-0  | R-Jr.-1L | Richardson, Texas/Richardson HS (SMU)               |
| 21  | Destiny Graham         | F    | 6-3  | Fr. HS   | East Palo Alto, Calif. (Eastside College Prep)      |
| 23  | Michal Miller          | G    | 5-7  | Fr.- HS  | Michigan City, Ind. (Michigan City HS)              |
| 24  | LaBrittney Jones       | F    | 6-1  | Jr.-2L   | Cedar Hill, Texas (Cedar Hill HS)                   |
| 31  | Dejza James            | F    | 6-1  | Jr.-2L   | Elk Grove, Calif. (Pleasant Grove HS)               |
| 33  | JaLea Bennett          | G    | 6-0  | So.-1L   | Grand Prairie, Texas (Mansfield Timberview HS)      |
| 42  | A'Shanti Coleman       | F    | 6-2  | Fr.-HS   | San Francisco, Calif. (Sacred Heart Cathedral Prep) |

## COACHING STAFF

**Head Coach:** Niya Butts (Tennessee, '00), 8th Year

**Assistant Coach:** E.C. Hill (Northern Illinois, '95), 5th Year

**Asst. Coach/ Recruiting Coordinator:** Calamity McEntire (Tennessee, '03), 4th Year

**Assistant Coach:** Sean LeBeauf (Montevallo-Ala., '94), 3rd Year

## SUPPORT STAFF

**Director of Operations:** Lisa Salgado

**Assistant Director of Operations:** Alli Gloyd

**Video Coordinator:** Daniel Boice

**Athletic Trainer:** Doug Contaoi

## ALPHABETICAL ROSTER

| No. | Name                   | Pos |
|-----|------------------------|-----|
| 20  | Farrin Bell            | G   |
| 33  | JaLea Bennett          | G   |
| 15  | Keyahndra Cannon       | G   |
| 42  | A'Shanti Coleman       | F   |
| 10  | Lauren Evans           | G   |
| 21  | Destiny Graham         | F   |
| 3   | Taryn Griffey          | G   |
| 11  | Cherice Harris         | G   |
| 31  | Dejza James            | F   |
| 24  | LaBrittney Jones       | F   |
| 23  | Michal Miller          | G   |
| 13  | Eugenie Simonet-Keller | C   |
| 14  | Malena Washington      | G   |
| 0   | Breanna Workman        | F   |

## PRONUNCIATIONS

|                          |             |
|--------------------------|-------------|
| <b>Niya Butts</b>        | NIGH-ah     |
| <b>Sean LeBeauf</b>      | Leh-BUFF    |
| <b>Farrin Bell</b>       | FARE-in     |
| <b>JaLea Bennett</b>     | Juh-LEE-uh  |
| <b>Keyahndra Cannon</b>  | Key-ON-druh |
| <b>Cherice Harris</b>    | Sher-EES    |
| <b>Dejza James</b>       | DAY-juh     |
| <b>Malena Washington</b> | Muh-LEE-nuh |
| <b>Breanna Workman</b>   | Bree-ANN-uh |

## ROSTER BREAKDOWN

### By Height:

|                        |      |
|------------------------|------|
| Eugenie Simonet-Keller | 6-8  |
| Destiny Graham         | 6-3  |
| A'Shanti Coleman       | 6-2  |
| LaBrittney Jones       | 6-1  |
| Breanna Workman        | 6-1  |
| Dejza James            | 6-1  |
| Farrin Bell            | 6-0  |
| JaLea Bennett          | 6-0  |
| Lauren Evans           | 5-11 |
| Keyahndra Cannon       | 5-9  |
| Cherice Harris         | 5-8  |
| Taryn Griffey          | 5-7  |
| Michal Miller          | 5-7  |
| Malena Washington      | 5-6  |

### Returners (2014-15 stats):

|                   |                  |
|-------------------|------------------|
| LaBrittney Jones  | 9.0 ppg/5.7 rpg  |
| Malena Washington | 6.9 ppg/2.1 rpg  |
| Keyahndra Cannon  | 5.5 ppg/ 2.3 rpg |
| JaLea Bennett     | 4.5 ppg/2.3 rpg  |
| Breanna Workman   | 4.4 ppg/3.7 rpg  |
| Dejza James       | 3.6 ppg/2.9 rpg  |
| Cherice Harris    | 1.2 ppg/0.8 rpg  |
| Farrin Bell       | 1.0 ppg/1.0 apg  |
| Lauren Evans      | DNP - TR         |
| Taryn Griffey     | DNP-injury       |

### Newcomers:

|                        |           |
|------------------------|-----------|
| Michal Miller          | Fr./G/5-7 |
| Eugenie Simonet-Keller | Fr./C/6-8 |
| Destiny Graham         | Fr./F/6-3 |
| A'Shanti Coleman       | Fr./F/6-2 |

### By Position:

|          |   |
|----------|---|
| Guards   | 8 |
| Forwards | 5 |
| Centers  | 1 |

### By Class:

|            |   |
|------------|---|
| Freshmen   | 5 |
| Sophomores | 3 |
| Juniors    | 6 |
| Seniors    | 1 |

### By State/Country:

|            |   |
|------------|---|
| California | 5 |
| Texas      | 4 |
| Arizona    | 1 |
| Indiana    | 1 |
| Nevada     | 1 |
| Washington | 1 |
| France     | 1 |



# 2015-16 ARIZONA WOMEN'S BASKETBALL RADIO/TV ROSTER



**#0 BREANNA WORKMAN**  
F • 6-1 • Jr.-2L  
Las Vegas, Nev.



**#3 TARYN GRIFFEY**  
G • 5-7 • R-Fr.-HS  
Seattle, Wash.



**#10 LAUREN EVANS**  
G • 5-11 • R-Jr.-TR  
Phoenix, Ariz.



**#11 CHERICE HARRIS**  
G • 5-8 • So.-1L  
Rancho Cucamonga, Calif.



**#13 EUGENIE SIMONET-KELLER**  
C • 6-8 • Fr.-HS  
Phoenix, Ariz.



**#14 MALENA WASHINGTON**  
G • 5-6 • Jr.-1L  
Beaumont, Texas



**#15 KEYAHNDRA CANNON**  
G • 5-9 • Sr.-3L  
San Diego, Calif.



**#20 FARRIN BELL**  
G • 6-0 • RSo.-TR  
Richardson, Texas



**#21 DESTINY GRAHAM**  
F • 6-3 • Fr.-HS  
East Palo Alto, Calif.



**#23 MICHAL MILLER**  
F • 5-7 • Fr.-HS  
Michigan City, Ind.



**#24 LABRITTNEY JONES**  
F • 6-1 • Jr.-2L  
Cedar Hill, Texas



**#31 DEJZA JAMES**  
F • 6-1 • Jr.-2L  
Elk Grove, Calif.



**#33 JALEA BENNETT**  
G • 6-0 • So.-1L  
Grand Prairie, Texas



**#42 A'SHANTI COLEMAN**  
F • 6-2 • Fr.-HS  
San Francisco, Calif.



**NIYA BUTTS**  
Head Coach  
8th Season at Arizona



**E.C. HILL**  
Assistant Coach  
5th Season at Arizona



**CALAMITY McENTIRE**  
Assistant Coach  
4th Season at Arizona



**SEAN LeBEAUF**  
Assistant Coach  
3rd Season at Arizona



**LISA SALGADO**  
Director of Operations  
4th Season at Arizona



**MEDIA POLICIES AND SERVICES**

**ARIZONA ATHLETICS COMMUNICATIONS**

Office Phone (520) 621-4163  
 Office Fax (520) 621-2681  
 Press Row Phone (520) 621-5291  
 Ticket Office (520)-621-CATS  
 Web site www.ArizonaWildcats.com  
 Mailing Address McKale Center, Rm 106  
 1 National Championship Dr.,  
 Tucson, AZ 85721

Daniel Berk, Assistant Director/WBB Contact  
 Office Phone (520) 621-1814  
 Mobile Phone (314) 363-5842  
 E-mail dberk@arizona.edu

**ATHLETICS COMMUNICATIONS OFFICE**

- ▶ The University of Arizona Athletics Communications Office is located in Room 106 on the ground floor of the McKale Center
- ▶ The McKale Center is located at 1 National Championship Drive.

**CREDENTIALS**

- ▶ Requests for press, radio, television and photographer credentials should be emailed at least 48 hours in advance to Daniel Berk in the Athletics Media Relations Office at dberk@arizona.edu. Passes are available for working media only and are required for all games. Credentials may be picked up in the Athletic Communications Office on the day of the game or at the McKale Center Ticket Office beginning 90 minutes prior to tip-off. Media Credentials for away games will be administered through the home SID.

**PRACTICES**

- ▶ All local and visiting media are welcome to watch Arizona women's basketball practices, but must make prior arrangements through the Athletic Communications Office in order to attend. TV crews and photographers are welcome to shoot footage of practices, provided they stay outside the boundaries of the court. Please contact Daniel Berk about covering practices.
- ▶ All game day and road practices are closed.

**INTERVIEWS**

- ▶ All interviews with UA coaches, student-athletes and administrators MUST be coordinated through the Arizona Athletics Communications office.
- ▶ Arrangements to speak with a member of the women's basketball program should be made with Daniel Berk at least one day prior to the desired interview date. Players and coaches are generally available following practice.
- ▶ The locker rooms, training room and weight room inside McKale Center and Richard Jefferson Gymnasium are off-limits to reporters.
- ▶ On game days, no UA players will be available until the postgame media session.
- ▶ Postgame interviews after home games will be conducted in the interview room which is located in room 105 next to the Athletic Communications Office inside McKale Center. For post game interviews following road games contact Daniel Berk.

**ACCESS TO WILDCATS INFORMATION**

- ▶ **ArizonaWildcats.com**- The official website of University of Arizona athletics includes rosters, schedules, statistics, player profiles, press releases, game notes and more. The site is updated daily and also includes links to listen to UA athletics events live over the Internet.
- ▶ **E-Mail List** - Press releases, notes and statistics are e-mailed to a large contingent of media. To be added to the list please contact Daniel Berk. Notes packets will be available at least 24 hours prior to each game, and in many instances much earlier.

**PAC-12.COM**

- ▶ The league's official web site contains information on all 12 schools, including updated conference statistics, schedules and standings.

**Packed the House**

The Wildcats drew 6,652 fans to their Monday matinee matchup with Kansas, setting a new program record for single-game attendance. Monday was School Day, where Arizona welcomed in several thousand students from local elementary schools to enjoy the game with the Jayhawks. The students helped provide an electric atmosphere that helped the Wildcats win 67-52. Kansas coach Brandon Schneider said after the game that the fans certainly had an impact: "I felt like the environment really bothered us early. We knew it was going to be loud. We knew they would have 6,000 plus with the promotion going on today. We practiced with music and crowd noise the last couple of days." The total surpassed last year's School Day of 6,268, which stood as the program record.

**Shoot That 3, Hit That 3**

Through four games this season, Arizona has proven it has plenty of shooters who can hit from deep. The Wildcats are 28-53 from 3-point range this season (a .528 shooting percentage), which leads the country. Taryn Griffey is 11 for 19 on the season (.579) and Malena Washington and Michal Miller have each added six long balls in four games. Washington is six for 14. Miller is six of 10. Jalea Bennett, Dejza James and Keyahndra Cannon have all also connected from three-point range this young season. Arizona's strong showing from deep comes one season after shooting .241 from three last season.

**Top 3-point shooting teams**

1. Arizona .528 (28-53)
2. Oregon State .509 (27-53)
3. Colorado .462 (18-39)
4. Oakland .444 (44-99)
5. Eastern Michigan .439 (18-41)
6. Creighton .435 (40-92)
7. Michigan .434 (33-76)
8. Montana State .431 (22-51)
9. St. Francis Brooklyn .424 (14-33)
9. Texas A&M .424 (14-33)

**It's A Bench Party**

The Wildcats have gotten some significant contributions from its bench early this season. Through four games, Arizona is outscoring its opponent's bench 113-52 for a +61 scoring margin. The bench has scored at least 26 points in each game this season and has posted a +20 scoring margin in each of the last three games. Malena Washington is leading the bench crew, averaging 10.8 points per game. The junior guard is also tied for the team lead in assists with 12. Dejza James has also been solid off the bench, averaging seven points and 7 1/2 rebounds in 19 minutes. Michal Miller, Lauren Evans, Farrin Bell and Destiny Graham have also been productive coming off the bench for the Wildcats.

**Answering the Bell**

Junior Farrin Bell played a career-high 17 minutes last game against Kansas and finished with three points, four assists and three rebounds. But coach Niya Butts

thought Bell's production went far past the box score and praised the redshirt junior after the win over the Jayhawks: "To me, Farrin Bell was our player of the game. She didn't score the most points but she stepped in at every position on the floor and made plays for us. So you have to be proud of that and we have to continue to celebrate each other's success as a team. If we can do that the sky's the limit." Bell, an SMU transfer, is a redshirt junior and is scheduled to graduate this spring.

**Scouting North Texas**

The Mean Green enter Friday's matchup with a 1-2 record, posting a win over Oklahoma and setbacks to San Francisco and Texas State. Terra Ellison leads the way for North Texas, averaging 13.7 points per game. Acheil Tac is averaging 11.7 points per game and pulling down 8.7 rebounds a contest. Ellison doesn't come off the floor much, averaging 37.7 minutes per game. North Texas is shooting .454 from the field and holding opponents to under 40 percent shooting at .393. As a team, the Mean Green is shooting .405 from 3-point distance, hitting 15 of 37. Opponents are shooting just .294. UNT also gets solid production from starters Teadra Jones and Kelsey Criner. Jones is averaging 9.7 points per game in 28 minutes. Criner is at 7.7 points per game, but leads the team with 14 assists and is averaging 5.3 rebounds. She plays 29.3 minutes a contest.

**Inside The Series**

A look at the three all-time games in the North Texas-Arizona series:

- 12/21/10: Arizona 88, North Texas 73
- 11/28/11: Arizona 69, North Texas 62
- 11/28/12: Arizona 71, North Texas 66

**Home Sweet Home**

Eight of Arizona's 10 wins last season came at the friendly confines of McKale Center and the solid play at home has rolled over to this season. The Wildcats are 2-0 at home to start the season. Arizona beat Howard 65-28 and then topped Kansas 67-52 on School Day. Arizona has won three straight at McKale Center dating back to last season. Last season, Arizona picked up home wins against UC-Santa Barbara, Grambling State, Southern, UAB, UT-Martin, Oregon, Stanford and Utah. All total, Arizona is 11-7 in its last 18 games at McKale Center.

**Go DJ, That's Our DJ**

Junior forward Dejza James made her season debut against San Diego and impressed with an eight-point, 10-rebound performance. James played 21 minutes off the bench and provided a good combination with fellow junior forward Breanna Workman. One game later, James hit the first 3-pointer of her career and had six points and five rebounds in 17 minutes. James was a regular for the Wildcats last season as a sophomore, playing in all 30 games and averaging 13.2 minutes per game. She averaged 3.6 points per game. Her production is expected to increase as an underclassmen as shown in her first couple of contests.





| TALE OF THE TAPE     |          |             |
|----------------------|----------|-------------|
| Category             | Arizona  | North Texas |
| Scoring              | 248      | 184         |
| PPG                  | 62.0     | 61.3        |
| Scoring Margin       | +12.5    | -2.0        |
| Field Goals-Attempt  | 93-220   | 69-152      |
| Field Goal Pct.      | .423     | .454        |
| 3PT FGs-Attempts     | 28-53    | 15-37       |
| 3PT FG Pct.          | .528     | .405        |
| 3PT FG MPG           | 7.0      | 5.0         |
| Free Throw-Attempts. | 34-65    | 31-43       |
| Free Throw Pct.      | .523     | .721        |
| Rebounds/RPG         | 155/38.8 | 106/35.3    |
| Rebound Margin       | +5.0     | +4.0        |
| Assists/APG          | 55/13.8  | 41/13.7     |
| Turnovers/TPG        | 65/16.3  | 70/23.3     |
| TO Margin            | +3.0     | -5.0        |
| Assist/TO ratio      | 0.8      | 0.6         |
| Steals/SPG           | 34/8.5   | 24/8.0      |
| Blocks/BPG           | 17/4.3   | 9/3789.0    |

**We See Ya JaLea**

Sophomore JaLea Bennett had a strong end to the season for the Wildcats last year as a freshman and it has carried over to her sophomore season. In last year's regular season finale against Utah, Bennett put together a big game as she scored 14 points on a perfect 7-of-7 from the field, while also recording a career-best four assists. The 14 points tied a career high. She also grabbed a career-high six rebounds, while the seven field goals made were also a career best. Now as a sophomore, Bennett is at it again. Against Howard, Bennett led all scorers with 18 points on 7 of 12 shooting. She also grabbed four rebounds in 21 minutes. Two games later against Kansas, Bennett had 11 points and five rebounds. The sophomore from Texas has also been a presence on defense for the Wildcats.

**Fabulous Freshmen**

Freshmen Taryn Griffey and Destiny Graham had memorable collegiate debuts in Arizona's 62-59 win over Toledo last week. Griffey had 18 points and was 6 of 10 from the floor. She was 6 of 9 from 3-point distance and led all scorers with her 18 points. It was the most points scored by an Arizona freshman in a debut since Davellyn Whyte poured in 27 in a 75-70 win over Iona in 2009. Griffey, a redshirt freshman, also had four assists and four rebounds and was nominated for the Pac-12 Freshman of the Week. Graham, a true freshman had two points, nine rebounds, three steals and three assists in the win over the Rockets. The nine rebounds were the most in a freshman debut since current Wildcat LaBrittney Jones pulled down 10 boards in Arizona's 2013-14 season opener against Iona. The stellar play by the freshmen continued against Howard with even more players getting in on the action. Michal Miller, a true freshman from Michigan City, Ind., hit four of six 3-pointers and finished with 16 points in 14 minutes. Additionally, freshman post player A'Shanti Coleman made her second straight start and had eight points, five rebounds and three steals in 28 minutes. Arizona's four freshmen on the roster,

Griffey, Graham, Coleman and Miller should all make an impact in their debut seasons. Against San Diego, Griffey had five points and three rebounds. Coleman played 15 minutes and Graham saw nine minutes of action. Griffey again scored in double figures against Kansas, pouring in 17. Coleman had a career best four blocks against the Jayhawks and also converted a steal into a fast break layup.

**A "Workman" Like Effort**

With LaBrittney Jones currently out with a foot injury, Breanna Workman is the post player with the most experience on Arizona's roster. Against Toledo, Workman played a game high 28 minutes and had 10 points and seven rebounds. She got to the free throw line five times in the win. After fouling out against Eastern New Mexico in the exhibition game, Workman had just two fouls against Toledo. The junior from Las Vegas also had a solid game against San Diego, putting up 10 points and grabbing seven rebounds. She played a season-high 30 minutes. Workman also added two assists, a block and a steal against the Toreros.

**Cannon's Homecoming**

Arizona's lone senior, guard Keyahndra Cannon, got to play in front of her hometown Saturday against San Diego. The Mission Bay High School product was a two-time All-State selection and led her team to the state semifinals as a senior. She was also a four-year team captain. Cannon has played in 91 career games and has 417 points to her credit. Cannon had more than 20 family members and friends at Jenny Craig Pavilion to watch her play. They came prepared dressed in full Arizona gear with cut-out sticks of Cannon's face.

**So Many Options**

Through four games, the Wildcats have shown off their depth, which should be dangerous come Pac-12 play. The Wildcats played 11 different players so far with each player averaging at least eight minutes per game. No player is averaging more than the 26.3 minutes per game Breanna Workman is averaging. Seven players--Workman, Taryn Griffey, Malena Washington, Michal Miller, Keyahndra Cannon, JaLea Bennett and A'Shanti Coleman are all averaging five or more points a contest. Workman, Griffey, Evans, Washington, Cannon, Graham and Coleman are all playing at least 20 minutes per game.

**A Valuable Addition**

After transferring from Virginia Tech and sitting out last season, Lauren Evans has made her presence felt so far through three games for Arizona. Evans is averaging 22.3 minutes per game and is second on the team with 14 rebounds. She leads the team with eight offensive boards and is tied for the team lead in steals with four. Evans can play both guard and forward and has for the Wildcats this season. Evans' brother, Ryan, played four seasons at Wisconsin from 2008 to 2013.

**SITUATIONAL STATISTICS**

|                                           |     |
|-------------------------------------------|-----|
| Overall                                   | 3-1 |
| vs. Pac-12 teams                          | 0-0 |
| vs. Non-Conference foes                   | 3-1 |
| At home                                   | 2-0 |
| On the road                               | 1-1 |
| At neutral sites                          | 0-0 |
| In overtime                               | 0-0 |
| In double overtime                        | 0-0 |
| vs. Ranked Teams                          | 0-0 |
| vs. Teams Receiving Votes for Top 25      | 0-0 |
| In games decided by 3 points or less      | 1-0 |
| In games decided by 4-5 points            | 0-1 |
| In games decided by 6-10 points           | 0-0 |
| In games decided by 11-19 points          | 1-0 |
| In games decided by 20-plus points        | 1-0 |
| Scoring first                             | 1-0 |
| Leading at half                           | 3-0 |
| Tied at half                              | 0-0 |
| Trailing at half                          | 0-1 |
| Leading with 10:00 remaining              | 2-0 |
| Trailing with 10:00 remaining             | 0-1 |
| Tied with 10:00 remaining                 | 1-0 |
| Leading with 5:00 remaining               | 2-0 |
| Trailing with 5:00 remaining              | 1-1 |
| Tied with 5:00 remaining                  | 0-0 |
| Arizona shoots 40% or better              | 3-1 |
| Arizona shoots less than 40%              | 0-0 |
| Arizona shoots better than opponent       | 3-1 |
| Opponent shoots better                    | 0-0 |
| Opponent shoots 40% or better             | 1-0 |
| Arizona out-rebounds opponent             | 3-1 |
| Opponent out-rebounds Arizona             | 0-0 |
| Arizona shoots 70% or better from FT line | 0-0 |
| Arizona has more FT attempts              | 1-0 |
| Opponent has more FT attempts             | 2-1 |
| Teams have equal FT attempts              | 0-0 |
| Arizona shoots 40% or better from 3-pt    | 3-0 |
| Arizona has more turnovers than opponent  | 1-1 |
| Arizona has less turnovers than opponent  | 2-0 |
| Arizona scores 90-plus points             | 0-0 |
| Arizona scores 80-89 points               | 0-0 |
| Arizona scores 70-79 points               | 0-0 |
| Arizona scores 60-69 points               | 3-0 |
| Arizona scores 50-59 points               | 0-1 |
| Arizona scores less than 50 points        | 0-0 |
| Opponent scores 90-plus points            | 0-0 |
| Opponent scores 80-89 points              | 0-0 |
| Opponent scores 70-79 points              | 0-0 |
| Opponent scores 60-69 points              | 0-0 |
| Opponent scores 50-59 points              | 2-1 |
| Opponent scores less than 50 points       | 1-0 |
| Arizona bench scores more                 | 3-1 |
| Opponent bench scores more                | 0-0 |
| Arizona scores more fast break points     | 2-0 |
| Opponent scores more fast break points    | 0-0 |
| Fast break points are even                | 1-1 |
| Arizona scores more points in the paint   | 2-0 |
| Opponent scores more points in the paint  | 1-1 |
| Arizona scores more points off turnovers  | 2-1 |
| Opponent scores more points off turnovers | 0-0 |
| Points off turnovers are even             | 1-0 |
| Arizona has more second chance points     | 2-0 |
| Opponent has more second chance points    | 1-1 |
| Second chance points are equal            | 0-0 |
| <b>Arizona Streaks...</b>                 |     |
| Current streak                            | W1  |
| Homecourt streak                          | W3  |
| Road streak                               | L1  |
| Neutral court streak                      | L2  |
| Last 5 games                              | 3-2 |
| Last 10 games                             | 4-6 |
| <b>Arizona By Month...</b>                |     |
| November                                  | 3-1 |
| December                                  | 0-0 |
| January                                   | 0-0 |
| February                                  | 0-0 |
| March                                     | 0-0 |
| <b>Arizona By Day Of The Week...</b>      |     |
| Sunday                                    | 0-0 |
| Monday                                    | 1-0 |
| Tuesday                                   | 0-0 |
| Wednesday                                 | 1-0 |
| Thursday                                  | 0-0 |
| Friday                                    | 0-0 |
| Saturday                                  | 1-1 |
| <b>Arizona By Time...</b>                 |     |
| Day                                       | 2-1 |
| Night                                     | 1-0 |





ARIZONA IN THE PAC-12 (2014-15)

| Team Category            | Total | Place ..... | Leader                |
|--------------------------|-------|-------------|-----------------------|
| Scoring Offense          | 58.1  | 11th.....   | Washington (75.0)     |
| Scoring Defense          | 66.6  | 10th.....   | Arizona State (55.9)  |
| Scoring Margin           | -8.5  | 12th        | Oregon State (+15.7)  |
| Free Throw Pct.          | .713  | 5th.....    | Washington (.780)     |
| Field Goal Pct.          | .365  | 12th.....   | Oregon State (.454)   |
| Field Goal Pct. Defense  | .425  | 10th.....   | Oregon State (.352)   |
| 3-Point Pct.             | .241  | 12th.....   | Colorado (.382)       |
| 3-Point Pct. Defense     | .301  | 4th.....    | Arizona State (.249)  |
| Rebounding Offense       | 37.4  | 10th.....   | Oregon State (42.8)   |
| Rebounding Defense       | 39.2  | 10th.....   | Arizona State (31.3)  |
| Rebounding Margin        | -1.8  | 11th.....   | Oregon State (+8.5)   |
| Blocked Shots            | 3.0   | 9th.....    | Oregon State (5.9)    |
| Assists Per Game         | 9.9   | 12th.....   | Oregon State (18.6)   |
| Steals Per Game          | 5.5   | 9th.        | Washington St. (10.0) |
| Turnover Margin          | -0.57 | 8th.....    | Washington St. (+5.5) |
| Assist-to-Turnover Ratio | 0.7   | 12th.....   | Oregon State (1.3)    |
| Offensive Rebounds       | 12.8  | 6th.....    | USC (14.9)            |
| Defensive Rebounds       | 24.6  | 9th.....    | Oregon State (30.4)   |
| Defensive Rebound Pct.   | .675  | 10th.....   | Utah (.737)           |
| Offensive Rebound Pct.   | .319  | 9th.....    | Arizona State (.377)  |
| 3-Ptrs Made Per Game     | 2.2   | 12th.....   | Oregon State (8.3)    |

INDIVIDUAL

Candice Warthen

Scoring (12.8 ppg, 17th)  
Minutes Per Game (33.4 , 8th)  
Free Throw Percentage (81.7%, 5th)

LaBrittney Jones

Blocks (1.5 bpg, 4th)  
Offensive Rebounding (2.2, 14th)  
Free Throw Percentage (76.4%, 13th)

Closing Strong

In the season opening win over Toledo, the Wildcats showed their strong ability to end halves and games. After being outscored 15-13 by the Rockets in the first quarter, Arizona posted a 16-8 advantage in the second quarter to take a six-point halftime lead. Toledo erased the deficit and tied the game after the third quarter, outscoring Arizona by six. But Arizona again closed with a bang, outscoring Toledo 16-13 and notching the victory. On the season, Arizona is outscoring opponents 43-24 in the second quarter and 44-35 in the fourth. In the first and third quarters, Arizona has just a nine-point advantage total.

The Kid's Kid Can Play

There's a familiar last name on Arizona's roster this season: Griffey. Taryn Griffey, a redshirt freshman guard for the Wildcats, is the daughter of Ken Griffey Jr., a 13-time Major League Baseball All-Star. And like her dad, nicknamed "The Kid," Taryn showed she has some skills of her own. The freshman guard, who hadn't played in a game in three years because knee injuries, had 13 points, 14 rebounds and nine assists. She committed just one turnover and had two steals in 35 minutes. She was a perfect 4 of 4 from the free throw line and 3 of 7 from 3-point distance. Griffey's brother Trey is a redshirt junior on Arizona's football team. Griffey had more than 20 family members at Arizona's season opener at Toledo.

Washington Cashes In

Malena Washington had a game-high 26 points on nine of 20 shooting from the floor in the exhibition game. She was 4 of 7 from 3-point range. The four 3-pointers would have been a career high if stats from exhibition contests counted. Washington's career high is three 3-pointers, which came against UCLA last season. All total, she had just nine 3-pointers last season as a sophomore. Already this year, Washington is 5 for 12 from beyond the arc and is sure to surpass her total from last year; her first season in the program.

New Faces Ready for Bright Lights

Coach Niya Butts added four new pieces to this year's roster with her 2015 recruiting class. The group consists of guard Michal Miller, forwards Destiny Graham and A'Shanti Coleman and center Eugenie Simonet-Keller.

**Butts on Miller:** "She's a very, very hardworking player. You know what you're going to get from her everyday, and I can certainly respect that. She can score the basketball. She does a good job with that. She has to slow down a bit and make sure she understands the entire game. But she's one of the most coachable kids we have on our team. That with her hard work, she will be an asset for us."

**Butts on Graham:** "She's been out for two weeks (concussion), but I like what she can do on the floor. She provides us with more size. She has a nice jumper from 15-16 feet out. She's going to add more length on the inside. I'm just looking forward to getting her back on the floor and continuing her development. I'm looking for great things from her as well."

**Butts on Coleman:** "Ashanti is coming along nicely. She's progressing. She's picking things up slowly, but surely. We need her to get stronger, but I like what she brings to our team. She's extremely long and athletic. I think grasping the speed of the game will really help her and us tremendously. I'm looking forward to seeing her on the floor."

NUMBERS TO KNOW

85

Arizona's 2015-2016 roster returns 85 combined starts from last season. Malena Washington led the way with 25 starts in 30 games.

9.9

The Wildcats averaged 9.9 assists per game last season. Candice Warthen was tops with 83 assists in 30 games. Malen Washington was second with 64.

44

LaBrittney Jones had nearly half of Arizona's blocks last season. As a team, the Wildcats had 90 blocks. Jones finished with 44.





**NATIONAL RANKINGS**

**ASSOCIATED PRESS = Week 3**

| Rk  | Team                 | Record*    | Points     | Prev.     |
|-----|----------------------|------------|------------|-----------|
| 1.  | Connecticut (32)     | 2-0        | 800        | 1         |
| 2.  | South Carolina       | 4-0        | 759        | 2         |
| 3.  | Notre Dame           | 4-0        | 722        | 3         |
| 4.  | Tennessee            | 4-0        | 702        | 4         |
| 5.  | Baylor               | 4-0        | 685        | 5         |
| 6.  | Maryland             | 3-0        | 609        | 8         |
| 7.  | <b>Oregon State</b>  | <b>3-0</b> | <b>585</b> | <b>9</b>  |
| 8.  | Texas                | 3-0        | 527        | 11        |
| 8.  | Mississippi State    | 2-0        | 527        | 10        |
| 10. | Texas A&M            | 4-0        | 520        | 12        |
| 11. | Ohio State           | 2-2        | 452        | 7         |
| 12. | Kentucky             | 4-0        | 439        | 13        |
| 13. | <b>Stanford</b>      | <b>3-1</b> | <b>433</b> | <b>15</b> |
| 14. | Florida State        | 2-1        | 378        | 6         |
| 15. | Duke                 | 3-1        | 341        | 14        |
| 16. | <b>Arizona State</b> | <b>1-1</b> | <b>268</b> | <b>18</b> |
| 16. | <b>California</b>    | <b>4-0</b> | <b>268</b> | <b>21</b> |
| 18. | South Florida        | 2-1        | 257        | 19        |
| 19. | Northwestern         | 3-0        | 251        | 20        |
| 20. | Michigan State       | 3-0        | 164        | 23        |
| 21. | Oklahoma             | 3-1        | 114        | 17        |
| 22. | Louisville           | 0-2        | 108        | 16        |
| 23. | Syracuse             | 1-1        | 103        | 25        |
| 24. | George Washington    | 3-1        | 83         | 22        |
| 25. | Iowa                 | 4-0        | 74         | NR        |

**Others receiving votes:** DePaul 58, Seton Hall 58, UCLA 41, Princeton 11, Dayton 11, Arkansas 8, Nebraska 8, Oklahoma State 6, Missouri 5, **Oregon 5**, NC State 4, Western Kentucky 4, Penn State 3, **Washington 1**, Miami (Fla.)1.

**USA TODAY/COACHES = Week 3**

| Rk  | Team                 | Record*    | Points     | Prev.     |
|-----|----------------------|------------|------------|-----------|
| 1.  | Connecticut (32)     | 2-0        | 800        | 1         |
| 2.  | South Carolina       | 4-0        | 757        | 2         |
| 3.  | Notre Dame           | 4-0        | 733        | 3         |
| 4.  | Baylor               | 4-0        | 694        | 4         |
| 5.  | Tennessee            | 4-0        | 659        | 5         |
| 6.  | Maryland             | 3-0        | 655        | 6         |
| 7.  | <b>Oregon State</b>  | <b>3-0</b> | <b>590</b> | <b>7</b>  |
| 8.  | Texas                | 3-0        | 571        | 8         |
| 9.  | Texas A&M            | 4-0        | 531        | 12        |
| 10. | Mississippi State    | 2-0        | 498        | 11        |
| 11. | Kentucky             | 4-0        | 460        | 13        |
| 12. | Duke                 | 3-1        | 386        | 9         |
| 13. | Florida State        | 2-1        | 367        | 14        |
| 14. | Ohio State           | 2-2        | 347        | 14        |
| 15. | <b>California</b>    | <b>4-0</b> | <b>293</b> | <b>21</b> |
| 16. | <b>Stanford</b>      | <b>3-1</b> | <b>287</b> | <b>10</b> |
| 17. | South Florida        | 2-1        | 282        | 17        |
| 18. | <b>Arizona State</b> | <b>1-1</b> | <b>231</b> | <b>18</b> |
| 19. | Northwestern         | 3-0        | 229        | 22        |
| 20. | DePaul               | 3-1        | 198        | 19        |
| 21. | Iowa                 | 4-0        | 147        | 23        |
| 22. | Michigan State       | 3-0        | 121        | NR        |
| 23. | George Washington    | 3-1        | 1-8        | 25        |
| 24. | Oklahoma             | 3-1        | 89         | 24        |
| 25. | Seton Hall           | 4-0        | 80         | NR        |

**Others receiving votes:** Louisville 58, Dayton 50, UCLA 31, Syracuse 29, Nebraska 29, Miami (Fla.), Princeton 12, Virginia 9, **Washington 7**, NC State 7, **Oregon 6**, St. John's 6, Penn State 4, Villanova 4, Gonzaga 4, Albany 4, Chattanooga 3, Army 2, Tulane 2, Arkansas State 1, Western Kentucky 1, East Carolina 1.

**BOLD: 2015-16 Arizona opponents**

**Lights, Camera, Action**

Twelve of Arizona's 18 conference games will be televised by Pac-12 Networks this season. Among the scheduled television games: home contests with Stanford, California and Arizona State and road tilts with Oregon State, UCLA and Washington.

**About That Schedule**

Arizona's nonconference schedule features road games at Toledo, San Diego and North Texas. The Wildcats will make all three trips this month, mixed in with home games against Howard and Kansas. In December, the Wildcats won't play any true road games. Instead, Arizona will travel to San Juan, Puerto Rico for three games in the Puerto Rico Classic. Arizona will play SMU, Florida Gulf Coast and Gardner-Webb. In conference play, Arizona will play Stanford and Arizona State each twice. The Cardinal and Sun Devils are both ranked in the AP Preseason Top 25. Arizona State is ranked 15th and Stanford is one spot behind at No. 16. Oregon State, ranked 10th in the preseason poll, is on the schedule just once this season. The Wildcats will travel to play the Beavers on Jan. 29.

**Cardiac Cats**

Six of Arizona's 10 wins last season came by seven points or less, three came by three points or less (Wake Forest, Oregon, Stanford), two in overtime (Wake Forest and Oregon), while both Pac-12 wins were by three points exactly.

**Workman Worked**

Junior forward Breanna Workman came on at the end of last season as a sophomore and will look to carry that over to this year. Workman started the last five games of the season and played 20 or more minutes in four of them. She had 10 points and seven rebounds in a 66-51 loss to Colorado and 11 points and four rebounds in the finale against UCLA. The post player also grabbed eight rebounds in a 64-41 win over Utah.

**More is Better**

Arizona has boasted two or more double-digit scorers in 25 of its last 28 games.

**LBJ or Batman?**

While in San Francisco for Pac-12 Media Day, junior forward LaBrittney Jones was asked about her nick name in high school, which was "Batman." Since she's arrived at Arizona, however, Jones has simply gone by "LBJ." By whichever name you prefer, Jones will be a major factor for the Wildcats this season. The Cedar Hill, Texas native poured in a career best 30 points against Oregon last season. Jones scored in double figures in 11 of her last 25 games. The junior has been hobbled by a foot injury and has yet to play this season.

**"Gloyd" to Still Have You Around**

Alli Gloyd, who started all 30 games last season and averaged 5.1 points per game and 5.3 rebounds a contest, has joined the coaching staff with her playing eligibility exhausted. Gloyd will serve as the Assistant Director of Operations, replacing Nick Incrocci.

**Griffey is game**

Freshman point guard Taryn Griffey will make her Arizona debut against Eastern New Mexico after sitting out last season with a knee injury. Griffey was the 8A State Player of the Year in Florida as a sophomore at Dr. Phillips High School. She was also All-Academic Metrowest for having the highest cumulative GPA. Griffey will compete with returning starter Malena Washington for playing time at point guard.

**Butts on Griffey:** "I'm just happy for Taryn. She has an opportunity to get back on the floor. She hasn't seen the floor in three years. That can be tough. I'm excited for her. She's a smart basketball player. She handled her return really well. She's going to be an asset to this team. I'm looking forward to seeing her once the lights go on."

**Cats Learning Etiquette**

For the third straight season, Arizona took part in an etiquette dinner at a local Tucson banquet space. At the dinner, players, coaches, and staff were instructed proper etiquette and social standard when dining at fine restaurants.





Official Basketball Box Score -- Game Totals -- Final Statistics
Arizona vs Toledo
11/14/15 Noon at Toledo, OH (Savage Arena)

Arizona 62 • 1-0

Table with columns: #, Player, Total (FG-FGA, 3-Ptr, FT-FTA), Rebounds (Off, Def, Tot), PF, TP, A, TO, Blk, Stl, Min. Includes player stats for Workman, Coleman, Griffey, Cannon, Bennett, Evans, Washington, Bell, Ferrin, Graham, Miller, and Team totals.

Summary statistics for Arizona: FG % 1st Half: 11-26 42.3%, 2nd half: 13-30 43.3%, Game: 24-56 42.9%; 3FG % 1st Half: 4-9 44.4%, 2nd half: 5-9 55.6%, Game: 9-18 50.0%; FT % 1st Half: 3-8 37.5%, 2nd half: 2-5 40.0%, Game: 5-13 38.5%. Deadball Rebounds: 5, 1.

Toledo 59 • 0-1

Table with columns: #, Player, Total (FG-FGA, 3-Ptr, FT-FTA), Rebounds (Off, Def, Tot), PF, TP, A, TO, Blk, Stl, Min. Includes player stats for Monakana, Capotosto, Reecher, Harris, Bravo-Harriott, Boyd, St-Fort, McIntyre, Printz, Rasmussen, Kessler, Woody, and Team totals.

Summary statistics for Toledo: FG % 1st Half: 7-22 31.8%, 2nd half: 14-29 48.3%, Game: 21-51 41.2%; 3FG % 1st Half: 2-4 50.0%, 2nd half: 4-10 40.0%, Game: 6-14 42.9%; FT % 1st Half: 7-13 53.8%, 2nd half: 4-4 100.0%, Game: 11-17 64.7%. Deadball Rebounds: 2, 1.

Officials: Michelle Del Duco, Barb Smith, Bryan Enterline
Technical fouls: Arizona-None, Toledo-None.
Attendance: 3713

Score by periods table with columns: 1st, 2nd, 3rd, 4th, Total. Arizona: 13, 16, 17, 16, 62. Toledo: 15, 8, 23, 13, 59.

Recap of Toledo

TOLEDO, Ohio – Thanks to strong defense and key shooting, the Arizona Wildcats erased a third-quarter deficit to top host Toledo 62-59 in their season opener Saturday afternoon at Savage Arena.

Taryn Griffey, in her first official game as a Wildcat, scored a game-high 18 points on 6 of 9 shooting from 3-point distance. Lauren Evans, also playing her first game at Arizona, finished with eight points, 10 rebounds and three steals in the win.

Juniors Malena Washington and Breanna Workman added 10 points apiece for the Wildcats.

“It was a great, great environment for us to play in,” Coach Niya Butts said. “It was a tough road environment, a tough team and our kids really hung tough. Toledo made a run on us in the third, and we were able to answer that run and hold on. Everybody on our roster did well when they were in there and helped us pull it out.”

Toledo took a 42-36 lead over Arizona with 3:51 to play in the third on a 3-pointer from Jade Woody. The Wildcats instantly responded with a 3-pointer from Washington and after two free throws from Toledo, Griffey hit a 3 to close it to 44-42. Toledo again scored to make it 46-42, but the Wildcats scored the final four points of the quarter to tie it up entering the fourth. Washington hit a jump shot and Breanna Workman connected on a layup. The Rockets scored the first basket of the fourth quarter, but Griffey hit another 3-pointer to give the Wildcats a 49-48. Arizona never trailed again. Griffey and Evans scored the first 10 points of the quarter for the Wildcats and led by as many as six with less than five minutes to go. Toledo eventually tied the game at 57, but Washington came up with a big steal and found Keyahndra Cannon ahead for a driving layup to put the Wildcats up 59-57. Toledo responded with a bucket to tie it, but Workman hit a post layup to put Arizona up for good. The junior forward added a free throw to make it 62-59, which held up as the final.

Recap of Howard

TUCSON, Ariz. – The Arizona Wildcats improved to 2-0 Wednesday night with a 65-28 win over the Howard Bison and made some history in doing so. Howard was just 6 of 39 from the floor, marking the fewest field goals allowed in a game by Arizona in program history.

The Bison’s shooting percentage of .154 was also the lowest ever allowed by Arizona and tied a Pac-12 mark that Stanford set against Pacific in 2003. “Our goal was to hold them to 46 points or less, and they scored 28 and that’s pretty good,” Coach Niya Butts said. “That is certainly a highlight. We forced them into 30 turnovers and got 15 steals. Those are all good things defensively. We still have to get better rebounding, but it was good tonight.” Howard scored more from the free throw line – 15 points—than they did from the field where they produced just 13 points against Arizona’s stingy defense. The Bison had three field goals in the first half and three more in the second.

“It’s not very often that a team does that,” freshman guard Michal Miller said of limiting Howard to just six field goals. But when you do, you have to take pride in that because it is hard to keep a team from scoring.”

The Wildcats didn’t have any trouble finding the bottom of the McKale Center nets on their end in the victory.

The Wildcats shot 9 of 15 from 3-point distance and 23 of 52 overall. Sophomore guard JaLea Bennett set a new career high with 18 points, knocking down both of her 3-pointers.

Miller, in just her second collegiate game, connected on four of six from deep range.

“I really like this group,” Butts said. “The issue with us is just figuring out who plays well together and knocking down those shots at the right time. We had a lot of young folks out there. I looked out there at one point and we had three freshman on the floor and that’s both a good and bad thing. When you are turning the ball over sometimes or not knowing exactly what you should be in offensively, it’s bad, but I like the way we are shooting the ball from the outside.”

Official Basketball Box Score -- Game Totals -- Final Statistics
HOWW vs Arizona
11/18/15 7:00 p.m. at McKale Center

HOWW 28 • 0-3

Table with columns: #, Player, Total (FG-FGA, 3-Ptr, FT-FTA), Rebounds (Off, Def, Tot), PF, TP, A, TO, Blk, Stl, Min. Includes player stats for Thomas, Johnson, Gonzales, Morrison, Shumate, Timmons, Tarver, Dopsong, Brown, and Team totals.

Summary statistics for HOWW: FG % 1st Half: 3-19 15.8%, 2nd half: 3-20 15.0%, Game: 6-39 15.4%; 3FG % 1st Half: 0-1 0.0%, 2nd half: 1-6 16.7%, Game: 1-7 14.3%; FT % 1st Half: 8-11 72.7%, 2nd half: 7-12 58.3%, Game: 15-23 65.2%. Deadball Rebounds: 4, 1.

Arizona 65 • 2-0

Table with columns: #, Player, Total (FG-FGA, 3-Ptr, FT-FTA), Rebounds (Off, Def, Tot), PF, TP, A, TO, Blk, Stl, Min. Includes player stats for Workman, Coleman, Griffey, Cannon, Bennett, Evans, Washington, Bell, Ferrin, Graham, Miller, and Team totals.

Summary statistics for Arizona: FG % 1st Half: 14-28 50.0%, 2nd half: 9-24 37.5%, Game: 23-52 44.2%; 3FG % 1st Half: 6-10 60.0%, 2nd half: 3-5 60.0%, Game: 9-15 60.0%; FT % 1st Half: 1-5 20.0%, 2nd half: 9-12 75.0%, Game: 10-17 58.8%. Deadball Rebounds: 3, 1.

Officials: LISA JONES, KENT JOHNSON, TIFFANY BIRD
Technical fouls: HOWW-None, Arizona-None.
Attendance: 778
Fouled Out: Howard-Gonzales, Victoria 1:08 2H

Score by periods table with columns: 1st, 2nd, 3rd, 4th, Total. HOWW: 8, 6, 7, 7, 28. Arizona: 20, 15, 17, 13, 65.







Official Basketball Box Score - Game Totals - Final Statistics
Arizona vs San Diego
11/21/15 4:05 PM at Jenny Craig Pavilion

Arizona 54 • 2-1

Table with columns: Player, FG-FGA, 3-Ptr, FT-FTA, Rebounds, PF, TP, A TO Blk, Stl, Min. Includes player stats for Breanna Workman, Colemman A'Shanti, Griffey Taryn, Cannon Keyahndra, Bennett JaLea, Evans Lauren, Washington Malena, Bell Farrin, Graham Destiny, Miller Michal, James Dejza, and Team totals.

San Diego 59 • 3-0

Table with columns: Player, FG-FGA, 3-Ptr, FT-FTA, Rebounds, PF, TP, A TO Blk, Stl, Min. Includes player stats for Williams Sydney, Hood Malina, Hood Maya, Hamilton Katherine, Woodward Cori, Hepburn Tayla, Ward-El Aubrey, BUHR Caroline, and Team totals.

Officials: Shelly Russi, Wanda Szeremeta, Cheryl Blue
Technical fouls: Arizona-None, San Diego-None.
Attendance: 714

Score by periods table with columns: 1st, 2nd, 3rd, 4th, Total. Arizona: 9, 12, 18, 15, 54. San Diego: 15, 10, 19, 15, 59.

Last FG - ARIZ 4th-00:35, USD 4th-03:55.
Largest lead - ARIZ None, USD by 10 3rd-03:06.

Recap of San Diego

SAN DIEGO, Calif. - Despite 10 points each from Breanna Workman and Malena Washington, the Arizona Wildcats suffered their first loss of the season Saturday evening 59-54 to the University of San Diego. Arizona (2-1) rebounded San Diego and posted more assists than the Toreros, but couldn't pull out a second road victory this season at Jenny Craig Pavilion.

The Wildcats worked to climb back from an early hole and pulled even once and within two several times. It's Arizona's first setback after a 62-59 win over Toledo and a 65-28 victory at home against Howard.

"It's the same thing we talked about at the end of Howard; I looked at that performance and I knew, just on the stat sheet, what we weren't doing defensively," Coach Niya Butts said. "I knew being undisciplined would cost us. We put Howard at the free throw line a lot, and the same with San Diego. They went 22 times and we lost by five. Certainly, I want to give San Diego credit. They came out and did what they had to do to win the game, and we did not."

The Toreros opened the game on an 8-0 run. Four of their early eight points came from the free throw line. The Wildcats got on the board with 4:45 to play in the first quarter when junior guard Malena Washington hit a jump shot. San Diego (3-0) extended its lead to 13-4 with just more than a minute to go in the quarter when Malina Hood connected on a pair of free throws. But the Wildcats started battling back and cut into the lead. Taryn Griffey hit a 3-pointer in the first quarter for the third straight game to cut it to 13-7. Breanna Workman than hit a pair of free throws to get it to 13-9.

San Diego then built a 21-15 lead with 4:30 to play in the half before the Wildcats again started marching back. Lauren Evans hit a bucket to cut it to four and then Keyahndra Cannon, playing in her home town of San Diego, hit a baseline jumper to make it 21-19. The Wildcats tied the game for the first time when junior Dejza James hit a layup with 1:31 left in the first half.

Recap of Kansas

Tucson, Ariz. - In front of the largest crowd in program history, the Arizona Wildcats surged by the Kansas Jayhawks in the second half to post a 67-52 win Monday afternoon at McKale Center.

The Wildcats improved to 3-1 on the young season with the victory, which came in front of 6,652 fans on School Day. Taryn Griffey led the Wildcats with 17 points and Malena Washington added 16. Sophomore JaLea Bennett also finished in double figures with 11 points.

"I am really happy with the way our team battled," coach Niya Butts said. "We responded from a tough road loss at San Diego against a tough team. To come in here with only one day in between and being able to respond to a scouting report that was pretty lengthy, to a team that has a lot of drivers, our kids responded really well today, the young kids especially."

The Wildcats led by just one point, 38-37, with 4:41 to play in the third quarter before exploding for a 20-1 run to take control of the game. Washington started the spurt with a layup and after Farrin Bell connected for a bucket, Washington hit another one to make it 44-37. Lauren Evans added a free throw to make it an eight-point lead at the end of the third quarter.

In the fourth, Griffey opened the quarter with back-to-back 3-pointers to increase Arizona's lead to 14 at 51-37 with 8:39 to play in the game. After a layup from Bennett, Griffey connected for five straight points - a layup and another 3-pointer - to make it 58-38.

Griffey finished six of nine from the floor and three of five from deep. The redshirt freshman guard is now 11 of 19 from 3-point distance this season. "The first half, I was really focused on driving to the basket, so the second half it would open up opportunities for three-pointers," Griffey said. "This game I wanted to focus on more than just shooting from three. Coach Butts has been telling me to drive to the basket more, so I just wanted to do what she has been wanting me to do."

Griffey scored 13 of her 17 in the second half and was Arizona's leading scorer for the second time this season.

"Taryn has the green light to take that shot at any time, but the deeper into the season we go, people start to play you for that so she really needs to put the ball on the floor, get some mid-range shots, and she did that today," Butts said. "I think that's why it opened up for her a bit on the outside."

Official Basketball Box Score - Game Totals - Final Statistics
University of Kansas vs Arizona
11/23/15 11 a.m. at McKale Center

University of Kansas 52 • 2-1

Table with columns: Player, FG-FGA, 3-Ptr, FT-FTA, Rebounds, PF, TP, A TO Blk, Stl, Min. Includes player stats for Brown Jada, ManningAllen Caelynn, Aldridge Lauren, Robertson Aisia, Kopatich Kylee, O'Neal Timeka, Enabulele Lorraine, Christopher Jayde, Cheadle Chayla, Johnson Tyler, and Team totals.

Arizona 67 • 3-1

Table with columns: Player, FG-FGA, 3-Ptr, FT-FTA, Rebounds, PF, TP, A TO Blk, Stl, Min. Includes player stats for Workman Breanna, Coleman A'Shanti, Griffey Taryn, Cannon Keyahndra, Bennett JaLea, Evans Lauren, Harris Cherice, Washington Malena, Bell Farrin, Graham Destiny, Miller Michal, James Dejza, and Team totals.

Officials: Robert Scofield, Shelly Nakasone, Lorena Ahumada
Technical fouls: University of Kansas-None, Arizona-None.
Attendance: 6652

Score by periods table with columns: 1st, 2nd, 3rd, 4th, Total. University of Kansas: 12, 16, 9, 15, 52. Arizona: 12, 19, 14, 22, 67.

Last FG - KU 4th-00:59, ARIZ 4th-00:35.
Largest lead - KU by 6 1st-05:30, ARIZ by 20 4th-06:00.





**LEADS, DEFICITS, RUNS**

| Opponent           | Largest Lead | Largest Deficit | Final Margin | Lead Changes |
|--------------------|--------------|-----------------|--------------|--------------|
| at Toledo          | 8            | 6               | +3           | 6            |
| Howard             | 40           | 0               | +37          | 1            |
| at San Diego       | 0            | 10              | -5           | 0            |
| Kansas             | 20           | 6               | +15          | 9            |
| at North Texas     |              |                 |              |              |
| New Mexico State   |              |                 |              |              |
| Pacific            |              |                 |              |              |
| Louisiana Tech     |              |                 |              |              |
| SMU                |              |                 |              |              |
| Florida Gulf Coast |              |                 |              |              |
| Gardner Webb       |              |                 |              |              |
| George Mason       |              |                 |              |              |
| Stanford           |              |                 |              |              |
| California         |              |                 |              |              |
| at Washington      |              |                 |              |              |
| at Washington      |              |                 |              |              |
| Utah               |              |                 |              |              |
| Colorado           |              |                 |              |              |
| Arizona State      |              |                 |              |              |
| at Arizona State   |              |                 |              |              |
| at Oregon State    |              |                 |              |              |
| at Oregon          |              |                 |              |              |
| USC                |              |                 |              |              |
| UCLA               |              |                 |              |              |
| at California      |              |                 |              |              |
| at Stanford        |              |                 |              |              |
| Washington         |              |                 |              |              |
| Washington State   |              |                 |              |              |
| at UCLA            |              |                 |              |              |
| at USC             |              |                 |              |              |

( ) denotes number of ties

| ARIZONA'S WIN-LOSS MARGIN |   |   |   |   |   |   |   |   |   |    |    |    |    |    |    |    |    |    |    |       |       |     |   |
|---------------------------|---|---|---|---|---|---|---|---|---|----|----|----|----|----|----|----|----|----|----|-------|-------|-----|---|
|                           | 1 | 2 | 3 | 4 | 5 | 6 | 7 | 8 | 9 | 10 | 11 | 12 | 13 | 14 | 15 | 16 | 17 | 18 | 19 | 20-25 | 26-30 | 31+ |   |
| Wins (3)                  |   |   | 1 |   |   |   |   |   |   |    |    |    |    |    | 1  |    |    |    |    |       |       |     | 1 |
| Losses (1)                |   |   |   |   | 1 |   |   |   |   |    |    |    |    |    |    |    |    |    |    |       |       |     |   |





## GENERAL INFORMATION

|                                     |                        |
|-------------------------------------|------------------------|
| <b>Location:</b>                    | Tucson, Ariz.          |
| <b>Founded:</b>                     | 1855                   |
| <b>Enrollment:</b>                  | 40,200                 |
| <b>Nickname:</b>                    | Wildcats               |
| <b>Colors:</b>                      | Cardinal and Navy      |
| <b>Affiliation:</b>                 | NCAA Division I        |
| <b>Conference:</b>                  | Pac-12 Conference      |
| <b>Arena (Capacity):</b>            | McKale Center (14,655) |
| <b>President:</b>                   | Dr. Ann Weaver Heart   |
| <b>Athletics Director:</b>          | Greg Byrne             |
| <b>NCAA Faculty Representative:</b> | Jory Hancock           |
| <b>Director of Athletics Phone:</b> | (520) 621-4622         |
| <b>Ticket Office Phone:</b>         | (520) 621-2287         |
| <b>Web Site:</b>                    | ArizonaWildcats.com    |

## HISTORY

|                                         |                                        |
|-----------------------------------------|----------------------------------------|
| <b>First Basketball Game:</b>           | Feb. 2, 1972 vs. New Mexico (W, 73-36) |
| <b>All-Time Record:</b>                 | 536 -642 (.455)                        |
| <b>All-Time Attendance Record:</b>      | 6,268 vs. UCSB on 11/25/14             |
| <b>Postseason Appearances:</b>          | 2011, WNIT 1st Round                   |
| <b>NCAA Appearances:</b>                | 7 ('97, '98, '99, '00, '03, '04, '05)  |
| <b>WNIT Appearances:</b>                | 4 ('96, 01, '11)                       |
| <b>Last Postseason Appearance:</b>      | 2011, WNIT 1st Round                   |
| <b>Last Postseason Opponent:</b>        | Utah State (3/17/11)                   |
| <b>Last Postseason Result</b>           | L, 103-96                              |
| <b>All-Time Postseason Record:</b>      | 10-9                                   |
| <b>All-Time NCAA Tournament Record</b>  | 6-7                                    |
| <b>All-Time WNIT Record:</b>            | 4-2                                    |
| <b>Last NCAA Tournament Appearance:</b> | 2005, 2nd round                        |
| <b>Last NCAA Tournament Opponent:</b>   | LSU (3/22/2005)                        |
| <b>Last NCAA Tournament Result:</b>     | L, 76-43                               |

## ARIZONA INACTIVES

|                         |               |
|-------------------------|---------------|
| <b>LaBrittney Jones</b> | Injury - foot |
|-------------------------|---------------|





2015-16 PAC-12 STANDINGS

|                      | Conference |          | Overall  |          |
|----------------------|------------|----------|----------|----------|
|                      | W          | L        | W        | L        |
| USC                  | 0          | 0        | 5        | 0        |
| #16/15 California    | 0          | 0        | 4        | 0        |
| RV/RV Washington     | 0          | 0        | 4        | 0        |
| Washington State     | 0          | 0        | 4        | 0        |
| RV/RV Oregon         | 0          | 0        | 4        | 0        |
| Utah                 | 0          | 0        | 3        | 0        |
| #7/7 Oregon State    | 0          | 0        | 3        | 0        |
| #13/16 Stanford      | 0          | 0        | 3        | 1        |
| <b>Arizona</b>       | <b>0</b>   | <b>0</b> | <b>3</b> | <b>1</b> |
| UCLA                 | 0          | 0        | 2        | 1        |
| Colorado             | 0          | 0        | 2        | 1        |
| #16/18 Arizona State | 0          | 0        | 1        | 1        |

2015-16 PAC-12 PRESEASON COACHES' POLL

- 1. Oregon State (11) 121
- 2. Stanford 104
- 3. Arizona State (1) 102
- T4. UCLA 88
- T4. California 88
- 6. Washington 68
- 7. USC 60
- 8. Oregon 52
- 9. Colorado 39
- 10. Washington State 30
- 11. Utah 23
- 12. Arizona 17**

2015-16 PAC-12 PRESEASON MEDIA POLL

- 1. Oregon State (23) 287
- 2. Arizona State (1) 247
- 3. Stanford 245
- 4. California 205
- 5. UCLA 203
- 6. Washington 167
- 7. USC 140
- 8. Oregon 118
- 9. Colorado 88
- 10. Washington State 75
- 11. Utah 61
- 12. Arizona 36**

2015-16 PRESEASON ALL-PAC-12 TEAM

- Jillian Alleyne, Oregon, F, Sr.
- Sophie Brunner, Arizona State, Jr.
- Nirra Fields, UCLA, Sr.
- Ruth Hamblin, Oregon State, Sr.
- Kelsey Plum, Washington, Jr.
- Sydney Wiese, Oregon State, Jr.

2015-16 PAC-12 WEEKLY AWARDS

PLAYER OF THE WEEK

Date ..... Player ..... Team ..... Year  
 Nov. 16 ..... Courtney Range ..... Cal ..... Jr.  
 Nov. 23 ..... Jordin Canada ..... UCLA ..... So.

FRESHMAN OF THE WEEK

Date ..... Player ..... Team ..... Year  
 Nov. 16 ..... Kristine Anigwe ..... Cal ..... Fr.  
 Nov. 23 ..... Borislava Hristova ..... Wazzu ..... Fr.





### 2015-16 MISCELLANEOUS STATS

| Opponent         | Points in the Paint | Margin | Turnovers | Points Off Turnovers | Margin | Offensive Rebounds | Second Chance Points | Margin | Bench Points | Margin | Final Score | Margin |
|------------------|---------------------|--------|-----------|----------------------|--------|--------------------|----------------------|--------|--------------|--------|-------------|--------|
| N14 at Toledo    | 18-26               | -8     | 16-15     | 15-15                | even   | 14-12              | 5-13                 | -8     | 27-26        | +1     | 62-59       | +3     |
| N18 vs. Howard   | 20-8                | +12    | 19-30     | 28-9                 | +19    | 13-11              | 17-6                 | +11    | 26-6         | +20    | 65-28       | +37    |
| N21 at San Diego | 8-10                | -2     | 16-15     | 14-10                | -4     | 12-12              | 2-15                 | -13    | 29-9         | +20    | 54-59       | -5     |
| N23 Kansas       | 30-24               | +6     | 14-17     | 17-12                | +5     | 15-13              | 12-9                 | +3     | 31-11        | +20    | 67-52       | +15    |
| <b>OVERALL</b>   | 76-68               | +8     | 65-67     | 74-46                | +28    | 54-48              | 36-43                | -7     | 113-52       | +61    | 248-198     | +50    |

Stats listed in order of Arizona-Opponents

### WILDCATS BY STARTING LINEUP in 2015-16

| Guard         | Guard            | Guard         | Forward          | Center          | Times | Record |
|---------------|------------------|---------------|------------------|-----------------|-------|--------|
| Taryn Griffey | Keyahndra Cannon | JaLea Bennett | A'Shanti Coleman | Breanna Workman | 4     | 3-1    |

### STATISTICAL GAMES (15-16)

#### DOUBLE-DIGIT SCORING

| Player            | Games |
|-------------------|-------|
| Malena Washington | 3     |
| Breanna Workman   | 2     |
| Taryn Griffey     | 2     |
| JaLea Bennett     | 2     |
| Michal Miller     | 1     |

#### DOUBLE-DIGIT REBOUNDING

| Player       | Games |
|--------------|-------|
| Lauren Evans | 1     |
| Dejza James  | 1     |

#### DOUBLE-DOUBLES

| Player | No. (Career) |
|--------|--------------|
|        |              |

#### 20-POINT GAMES

| Player | Games (Career) |
|--------|----------------|
|        |                |





# Niya BUTTS

## HEAD COACH

Eighth YEAR | TENNESSEE, '00

Entering her eighth season at the helm of the Wildcat program, women's basketball head coach Niya Butts is more energized and driven than ever to continue to build on the strong tradition of Arizona women's basketball and to take the program to new heights. With another strong recruiting class and an experienced and motivated group of veterans, the 2015-16 season is poised to be a successful stop on the road to greatness. One of the most sought after young coaches in the country, Arizona named Butts its new women's basketball head coach on April 3, 2008, ushering in a new era of Wildcat women's basketball. She is the eighth head coach in the program's history and the first African American female head coach at the University of Arizona.

In five seasons, Butts has achieved a number of milestones early on in her head coaching career. During the 2011-12 season, Arizona's 11-1 start was the best in program history since the 1999-2000 season. Butts earned her 70th-career win with UA's 100-68 victory versus Oregon on January 13, 2013.

Senior guard Davellyn Whyte finished her career at Arizona in 2013 as one of the best players in Wildcat women's basketball history. She was the 16th pick in the WNBA draft to the San Antonio Silver Stars, earned her fourth-straight All-Pac-12 accolade and was named an Associated Press Honorable Mention All-American in 2012.

Arizona's win was the first over Utah since 1985 and broke a six-game losing streak. The Wildcats followed it up with a 61-52 win at home for the first two-game winning streak against the Utes in history. On January 13, UA defeated Oregon, 100-68, scoring 100 points as a team for just the third time since 2009.

During the 2010-11 slate, the Wildcats made their first postseason appearance since the 2004-05 season and their first appearance in the Women's NIT since the 2000-01 season. Arizona won eight of its last 11 contests. Also in 2010-11, the Wildcats got a win against the Arizona State Sun Devils for the first time since Jan. 26, 2005. The Wildcats' 10-8 conference record in 2010-11 is their best since the 2004-05 campaign and their 21 wins overall is the most since the 2003-04 season. The 2010-11 season marks the highest finish in the Pac-10 for Arizona (fourth), since tying for the Pac-10 regular-season crown in 2004.

Senior forward Ify Ibekwe and then-sophomore Whyte both earned 2011 All-Pac-10 accolades. Ibekwe was named the 2011 Pac-10 Defensive Player of the Year and earned a spot on the Pac-10 All-Defensive Team. Barnes was named honorable mention All-Pac-10 Freshman Team. In the awards given out by the Pac-10 media, Ibekwe was named All-Pac-10 and a member of the All-Pac-10 Defensive Team. Senior forward Soana Lucet was also named to the 2011 Pac-10 All-Tournament Team by members of the media. Ibekwe capped the season off with her honorable mention Associated Press All-America honor.

Overall, the Wildcats improved from 12 wins in 2008-09, to 14 wins in 2009-10, to 21 wins in 2010-11. In Pac-10 play, Arizona improved from four wins in 2008-09, to six wins in 2009-10, to 10 wins in 2010-11.

During the 2009-10 campaign, the Wildcats posted their highest win total in five seasons while also achieving the most Pac-10 wins for the program in that same span. In their historic win over Oregon on Jan. 16, Arizona scored a school-record 119 points while then-freshman Whyte scored a single-game record 39 points. The Cats won the Iona College Tip-Off Tournament to start the season and wrapped up by advancing to the Pac-10 Tournament Quarterfinals for the second-straight season.

Whyte and then-junior Ibekwe were named first-team All-Pac-10 while Whyte was chosen as the Pac-10 Freshman of the Year and Ibekwe was named to the all-defensive team. Whyte was the top vote-getter on the five-player Pac-10 All-Freshman Team. Ibekwe repeated both her All-Pac-10 and All-Defensive Team awards after earning the same honors during her sophomore season. In 2008-09, Butts led the Wildcats to a Bank of Hawaii Classic Tournament Championship in the first weekend of her career, including wins over Hawai'i and Loyola Marymount, and then mentored the Wildcats to the second round of the Pac-10 Tournament, propelled by a win over Washington State. The conference portion of the slate included wins over Oregon and USC and a sweep of Washington.

Then a sophomore, Ibekwe was named to the Associated Press All-America honorable mention team. Ibekwe, a first-team All-Pac-10 selection and first-team All-Pac-10 Defensive Team

honoree, led Arizona in scoring, rebounding, steals, blocked shots, free throws, field goals and double-doubles during the 2008-09 slate. She finished the season with 336 rebounds, coming up three shy of the program's single-season record set in the 2003-04 season. Her 16 double-doubles were also second all-time for a single-season behind the 21 posted in the 2002-03 campaign. Ibekwe led the Pac-10 and finished sixth in the NCAA in rebounds per game at 11.6. She was also third in the Pac-10 in scoring at 15.7 points per game, while also finishing second in blocked shots (1.8) and 4th in steals (2.1).

Butts came to Tucson from the University of Kentucky where she spent five seasons as an assistant coach. In her final season in Lexington, she served as Kentucky's associate head coach, and was the program's recruiting coordinator for three seasons. While at UK, Butts secured two top-10 recruiting classes, solidifying her status as one of the best young coaching talents in the nation. Butts is no stranger to rebuilding programs. During her tenure at Kentucky, Butts helped coach the Wildcats to an 88-72 record (.550) over five seasons, with a trip to the NCAA Tournament in 2005-06 and three WNIT appearances. In her final season, Butts helped lead Kentucky to a 17-16 overall record, an 8-6 mark in the SEC for a fourth-place finish, and a WNIT quarterfinal appearance.

Before her stint at Kentucky, Butts spent the 2002-03 season as an assistant coach at Michigan State. Butts helped coach MSU to a 17-12 overall record that season and an appearance in the NCAA Tournament, the Spartans' first since 1997. Prior to Michigan State, Butts spent two seasons as an assistant coach at Tennessee Tech in Cookeville, Tenn., leading the Golden Eaglettes to two Ohio Valley Conference regular-season championships in both 2001 and 2002.

Butts played collegiately at the University of Tennessee for Pat Summitt, where she was a four-year letter winner and a member of two NCAA Championship teams (1997, 1998). The Lady Vols won three SEC titles (1998, 1999, 2000) during her tenure, and she was voted the SEC's Defensive Player of the Year in 1997. She also won the Lady Vols' Unsung Hero Award that season. Butts was a three-time Academic All-SEC selection (1998, 1999, 2000) and earned Tennessee's Academic Achiever of the Week four times. She played in 111 career games at UT and graduated in 2000 with a bachelor's degree in social work and a minor in psychology. She received a master's degree in education from Tennessee Tech in 2002.

Butts, 35, is a native of Americus, Ga. She is a proud member of Delta Sigma Theta Sorority, Incorporated.

### THE NIYA BUTTS FILE

**Hometown:** Americus, Ga.  
**Named UA Head Coach:** April 3, 2008

#### EDUCATION

- Tennessee, B.A. in social work and a minor in psychology
- Tennessee Tech, M.A. in education, 2002

#### COACHING EXPERIENCE

- 2008-Present Arizona, Head Coach
- 2007-2008 Kentucky, Associate Head Coach
- 2003-2007 Kentucky, Assistant Coach
- 2002-2003 Michigan State, Assistant Coach
- 2000-2002 Tennessee Tech, Assistant Coach

#### HEAD COACH POSTSEASON EXPERIENCE

- 2010-11 NCAA Tournament First Round

#### WNBA PLAYERS COACHED

- 2010-13 Davellyn Whyte (16th overall pick)

#### BUTTS YEAR-BY-YEAR (Head Coach)

| Year           | Record                | Notable        |
|----------------|-----------------------|----------------|
| <i>Arizona</i> |                       |                |
| 2008-09        | 12-19 (4-14 Pac-10)   |                |
| 2009-10        | 14-17 (6-12 Pac-10)   |                |
| 2010-11        | 21-12 (10-8 Pac-10)   | WNIT 1st Round |
| 2011-12        | 15-17 (3-15 Pac-12)   |                |
| 2012-13        | 12-18 (4-14 Pac-12)   |                |
| 2013-14        | 5-25 (1-18 Pac-12)    |                |
| 2014-15        | 10-20 (3-15 Pac-12)   |                |
| <b>TOTAL</b>   | <b>89-128 (31-95)</b> |                |

#### PLAYING CAREER

##### 1997-00 Tennessee

- 1997 SEC Defensive Player of the Year
- 3-time Academic All-SEC selection ('98, '99, '00)
- 2-time NCAA National Champion ('97, '98)





# Breanna WORKMAN

Forward • 6-1 • Junior • 2L • Las Vegas, Nev. (Centennial HS)

# #0

## TOP PERFORMANCES

### POINTS

Season: 10, 2x, last at San Diego (11/21/15)  
Career: 14 vs. Arkansas-Pine Bluff (12/29/13)

### REBOUNDS

Season: 7, 2x, last at San Diego (11/21/15)  
Career: 11, vs. Texas Tech (12/15/13)

### ASSISTS

Season: 3, vs. Howard (11/18/15)  
Career: 4, vs. Colorado (02/23/14)

### STEALS

Season: 2, vs. Howard (11/18/15)  
Career: 3, at Stanford (02/19/14)

### BLOCKS

Season: 1, at San Diego (11/21/15)  
Career: 1, 5x, last at San Diego (11/21/15)

### FIELD GOALS MADE

Season: 4, at Toledo (11/14/15)  
Career: 8, vs. Stanford (02/08/15)

### 3-PT FIELD GOALS MADE

Season:  
Career:

### FREE THROWS MADE

Season: 4, at San Diego (11/21/15)  
Career: 7, vs. Oregon State (02/02/14)

### MINUTES PLAYED

Season: 30, at San Diego (11/21/15)  
Career: 35, at Pacific (11/23/13)

Made her 42nd career start in Arizona's season opening win over Toledo...Played a game high 28 minutes in the victory against the Rockets...Reached double figures in a game for the 15th time in her career with her performance against Toledo...Played a season-high 30 minutes against San Diego and had 10 points and seven rebounds...

## Workman's 2015-16 Game-by-Game Statistics

| Opponent             | Date     | gs | min | Total  |      | 3-Pointers |      | Free throws |      | Rebounds |     |     |     | pf  | a  | t/o | blk | stl | pts | avg  |     |
|----------------------|----------|----|-----|--------|------|------------|------|-------------|------|----------|-----|-----|-----|-----|----|-----|-----|-----|-----|------|-----|
|                      |          |    |     | fg-fga | pct  | 3fg-fga    | pct  | ft-fa       | pct  | off      | def | tot | avg |     |    |     |     |     |     |      |     |
| at Toledo            | 11/14/15 | *  | 28  | 4-7    | .571 | 0-1        | .000 | 2-5         | .400 | 2        | 5   | 7   | 7.0 | 2   | 1  | 4   | 0   | 0   | 10  | 10.0 |     |
| HOWW                 | 11/18/15 | *  | 22  | 0-1    | .000 | 0-0        | .000 | 0-0         | .000 | 1        | 4   | 5   | 6.0 | 2   | 3  | 4   | 0   | 2   | 0   | 5.0  |     |
| at San Diego         | 11/21/15 | *  | 30  | 3-6    | .500 | 0-1        | .000 | 4-6         | .667 | 1        | 6   | 7   | 6.3 | 3   | 2  | 4   | 1   | 1   | 10  | 6.7  |     |
| UNIVERSITY OF KANSAS | 11/23/15 | *  | 25  | 1-2    | .500 | 0-0        | .000 | 0-0         | .000 | 1        | 5   | 6   | 6.3 | 3   | 1  | 3   | 0   | 1   | 2   | 5.5  |     |
| Totals               |          |    | 4   | 105    | 8-16 | .500       | 0-2  | .000        | 6-11 | .545     | 5   | 20  | 25  | 6.3 | 10 | 7   | 15  | 1   | 4   | 22   | 5.5 |

Games played: 4  
Minutes/game: 26.3  
Points/game: 5.5  
FG Pct: 50.0  
3FG Pct: 0.0  
FT Pct: 54.5

Rebounds/game: 6.3  
Assists/game: 1.8  
Turnovers/game: 3.8  
Assist/turnover ratio: 0.5  
Steals/game: 1.0  
Blocks/game: 0.3

## Workman's Career Statistics

| Season  | gp-gs | min/avg   | Total   |      | 3-Point |      | F-Throws |      | Rebounds |     |     |     | Scoring |    |     |    |     |     |     |     |
|---------|-------|-----------|---------|------|---------|------|----------|------|----------|-----|-----|-----|---------|----|-----|----|-----|-----|-----|-----|
|         |       |           | fg-fga  | pct  | fg-fga  | pct  | ft-fa    | pct  | off      | def | tot | avg | pf      | fo | ast | to | blk | stl | pts | avg |
| 2013-14 | 30-28 | 698/23.3  | 75-169  | .444 | 0-0     | .000 | 50-77    | .649 | 43       | 78  | 121 | 4.0 | 77      | 0  | 25  | 46 | 1   | 22  | 200 | 6.7 |
| 2014-15 | 28-13 | 534/19.1  | 44-103  | .427 | 0-0     | .000 | 35-51    | .686 | 35       | 68  | 103 | 3.7 | 64      | 0  | 12  | 35 | 4   | 15  | 123 | 4.4 |
| 2015-16 | 4-4   | 105/26.3  | 8-16    | .500 | 0-2     | .000 | 6-11     | .545 | 5        | 20  | 25  | 6.3 | 10      | 0  | 7   | 15 | 1   | 4   | 22  | 5.5 |
| TOTAL   | 62-45 | 1337/21.6 | 127-288 | .441 | 0-2     | .000 | 91-139   | .655 | 83       | 166 | 249 | 4.0 | 151     | 0  | 44  | 96 | 6   | 41  | 345 | 5.6 |





# Taryn GRIFFEY

Guard • 5-7 • Redshirt Freshman • HS • Seattle, Wash. (Dr. Phillips HS)

# #3

Poured in six 3-pointers in her Arizona debut on 11/14 at Toledo...Her six 3-pointers were the most by an Arizona player since Kama Griffitts hit seven in 2012 against UNLV...Hit four of her 6 3-pointers in the second half against the Rockets...

## TOP PERFORMANCES

### POINTS

Season: 18, at Toledo (11/14/15)  
Career: 18, at Toledo (11/14/15)

### REBOUNDS

Season: 4, at Toledo (11/14/15)  
Career: 4, at Toledo (11/14/15)

### ASSISTS

Season: 4, 2x last vs. Howard (11/18/15)  
Career: 4, 2x last vs. Howard (11/18/15)

### STEALS

Season: 1, 3x last vs. Kansas (11/23/15)  
Career: 1, 3x last vs. Kansas (11/23/15)

### BLOCKS

Season: 1, 2x, last at San Diego (11/21/15)  
Career: 1, 2x, last at San Diego (11/21/15)

### FIELD GOALS MADE

Season: 6, 2x, last vs. Kansas (11/23/15)  
Career: 6, 2x, last vs. Kansas (11/23/15)

### 3-PT FIELD GOALS MADE

Season: 6, at Toledo (11/14/15)  
Career: 6, at Toledo (11/14/15)

### FREE THROWS MADE

Season: 2, vs. Kansas (11/23/15)  
Career: 2, vs. Kansas (11/23/15)

### MINUTES PLAYED

Season: 23, 3x, last vs. Kansas (11/23/15)  
Career: 23, 3x, last vs. Kansas (11/23/15)

## Griffey's 2015-16 Game-by-Game Statistics

| Opponent             | Date     | gs | min | Total  |       | 3-Pointers |       | Free throws |      | Rebounds |     |     |     | pf  | a | t/o | blk | stl | pts | avg  |      |
|----------------------|----------|----|-----|--------|-------|------------|-------|-------------|------|----------|-----|-----|-----|-----|---|-----|-----|-----|-----|------|------|
|                      |          |    |     | fg-fga | pct   | 3fg-fga    | pct   | ft-fa       | pct  | off      | def | tot | avg |     |   |     |     |     |     |      |      |
| at Toledo            | 11/14/15 | *  | 23  | 6-10   | .600  | 6-9        | .667  | 0-0         | .000 | 0        | 4   | 4   | 4.0 | 1   | 4 | 4   | 0   | 1   | 18  | 18.0 |      |
| HOWW                 | 11/18/15 | *  | 20  | 3-5    | .600  | 1-3        | .333  | 0-2         | .000 | 1        | 1   | 2   | 3.0 | 0   | 4 | 0   | 1   | 1   | 7   | 12.5 |      |
| at San Diego         | 11/21/15 | *  | 23  | 2-8    | .250  | 1-2        | .500  | 0-0         | .000 | 1        | 2   | 3   | 3.0 | 1   | 2 | 0   | 1   | 0   | 5   | 10.0 |      |
| UNIVERSITY OF KANSAS | 11/23/15 | *  | 23  | 6-9    | .667  | 3-5        | .600  | 2-4         | .500 | 0        | 2   | 2   | 2.8 | 3   | 2 | 2   | 0   | 1   | 17  | 11.8 |      |
| Totals               |          |    | 4   | 89     | 17-32 | .531       | 11-19 | .579        | 2-6  | .333     | 2   | 9   | 11  | 2.8 | 5 | 12  | 6   | 2   | 3   | 47   | 11.8 |

Games played: 4  
Minutes/game: 22.3  
Points/game: 11.8  
FG Pct: 53.1  
3FG Pct: 57.9  
FT Pct: 33.3

Rebounds/game: 2.8  
Assists/game: 3.0  
Turnovers/game: 1.5  
Assist/turnover ratio: 2.0  
Steals/game: 0.8  
Blocks/game: 0.5

## Griffey's Career Statistics

| Season  | gp-gs | min/avg | Total  |      | 3-Point |      | F-Throws |      | Rebounds |     |     |     | Scoring |    |     |    |     |     |     |      |
|---------|-------|---------|--------|------|---------|------|----------|------|----------|-----|-----|-----|---------|----|-----|----|-----|-----|-----|------|
|         |       |         | fg-fga | pct  | fg-fga  | pct  | ft-fa    | pct  | off      | def | tot | avg | pf      | fo | ast | to | blk | stl | pts | avg  |
| 2015-16 | 4-4   | 89/22.3 | 17-32  | .531 | 11-19   | .579 | 2-6      | .333 | 2        | 9   | 11  | 2.8 | 5       | 0  | 12  | 6  | 2   | 3   | 47  | 11.8 |
| TOTAL   | 4-4   | 89/22.3 | 17-32  | .531 | 11-19   | .579 | 2-6      | .333 | 2        | 9   | 11  | 2.8 | 5       | 0  | 12  | 6  | 2   | 3   | 47  | 11.8 |







# Lauren EVANS

Guard • 5-11 • Junior • TR • Phoenix, Ariz. (Hamilton HS/ Virginia Tech)

## #10

### TOP PERFORMANCES

#### POINTS

Season: 8, at Toledo (11/14/15)  
Career: 8, at Toledo (11/14/15)

#### REBOUNDS

Season: 10, at Toledo (11/14/15)  
Career: 10, at Toledo (11/14/15)

#### ASSISTS

Season: 1, at Toledo, (11/14/15)  
Career: 1, at Toledo, (11/14/15)

#### STEALS

Season: 3, at Toledo (11/14/15)  
Career: 3, at Toledo (11/14/15)

#### BLOCKS

Season: 1, 2x last vs. Howard (11/18/15)  
Career: 1, 2x last vs. Howard (11/18/15)

#### FIELD GOALS MADE

Season: 4, at Toledo (11/14/15)  
Career: 4, at Toledo (11/14/15)

#### 3-PT FIELD GOALS MADE

Season:  
Career:

#### FREE THROWS MADE

Season: 1, vs. Kansas (11/23/15)  
Career: 1, vs. Kansas (11/23/15)

#### MINUTES PLAYED

Season: 26, at Toledo (11/14/15)  
Career: 26, at Toledo (11/14/15)

Made her Arizona debut against Toledo and collected a game-high 10 rebounds...She had six offensive boards and also added eight points and three steals against the Rockets...

### Evans' 2015-16 Game-by-Game Statistics

| Opponent             | Date     | gs | min | Total  |      | 3-Pointers |      | Free throws |      | Rebounds |     |     |      | pf | a | t/o | blk | stl | pts | avg |
|----------------------|----------|----|-----|--------|------|------------|------|-------------|------|----------|-----|-----|------|----|---|-----|-----|-----|-----|-----|
|                      |          |    |     | fg-fga | pct  | 3fg-fga    | pct  | ft-fa       | pct  | off      | def | tot | avg  |    |   |     |     |     |     |     |
| at Toledo            | 11/14/15 | 26 |     | 4-7    | .571 | 0-0        | .000 | 0-0         | .000 | 6        | 4   | 10  | 10.0 | 3  | 1 | 1   | 1   | 3   | 8   | 8.0 |
| HOWW                 | 11/18/15 | 19 |     | 0-2    | .000 | 0-0        | .000 | 0-0         | .000 | 1        | 2   | 3   | 6.5  | 4  | 0 | 1   | 1   | 1   | 0   | 4.0 |
| at San Diego         | 11/21/15 | 22 |     | 3-7    | .429 | 0-0        | .000 | 0-0         | .000 | 1        | 0   | 1   | 4.7  | 3  | 0 | 1   | 0   | 0   | 6   | 4.7 |
| UNIVERSITY OF KANSAS | 11/23/15 | 11 |     | 0-2    | .000 | 0-0        | .000 | 1-2         | .500 | 0        | 1   | 1   | 3.8  | 4  | 0 | 0   | 0   | 1   | 1   | 3.8 |
| Totals               |          | 0  | 78  | 7-18   | .389 | 0-0        | .000 | 1-2         | .500 | 8        | 7   | 15  | 3.8  | 14 | 1 | 3   | 2   | 5   | 15  | 3.8 |

Games played: 4  
Minutes/game: 19.5  
Points/game: 3.8  
FG Pct: 38.9  
FT Pct: 50.0

Rebounds/game: 3.8  
Assists/game: 0.3  
Turnovers/game: 0.8  
Assist/turnover ratio: 0.3  
Steals/game: 1.3  
Blocks/game: 0.5

### Evans' Career Statistics

| Season  | gp-gs | min/avg | Total  |      | 3-Point |      | F-Throws |      | Rebounds |     |     |     | Scoring |    |     |    |     |     |     |     |
|---------|-------|---------|--------|------|---------|------|----------|------|----------|-----|-----|-----|---------|----|-----|----|-----|-----|-----|-----|
|         |       |         | fg-fga | pct  | fg-fga  | pct  | ft-fa    | pct  | off      | def | tot | avg | pf      | fo | ast | to | blk | stl | pts | avg |
| 2015-16 | 4-0   | 78/19.5 | 7-18   | .389 | 0-0     | .000 | 1-2      | .500 | 8        | 7   | 15  | 3.8 | 14      | 0  | 1   | 3  | 2   | 5   | 15  | 3.8 |
| TOTAL   | 4-0   | 78/19.5 | 7-18   | .389 | 0-0     | .000 | 1-2      | .500 | 8        | 7   | 15  | 3.8 | 14      | 0  | 1   | 3  | 2   | 5   | 15  | 3.8 |





# Cherice HARRIS

Guard • 5-8 • Sophomore • HS • Rancho Cucamonga, Calif. (Etiwanda HS)

# # 1 1

## TOP PERFORMANCES

### POINTS

Season:  
Career: 3, vs. Grambling (12/03/14)

### REBOUNDS

Season:  
Career: 3, vs. vs. Arizona State (01/08/15)

### ASSISTS

Season:  
Career: 1, 3x, last vs. Arizona State (01/08/15)

### STEALS

Season:  
Career: 2, at Stanford (01/16/15)

### BLOCKS

Season:  
Career: 1, vs. UT Martin (12/29/14)

### FIELD GOALS MADE

Season:  
Career: 1, 2x, last at Stanford (01/16/15)

### 3-PT FIELD GOALS MADE

Season:  
Career: 1, vs. Grambling (12/03/14)

### FREE THROWS MADE

Season:  
Career: 2, vs. UCSB (11/25/14)

### MINUTES PLAYED

Season: )  
Career: 9, 2x, last at Stanford (01/16/15)

Sat out the season opener against Toledo...

### Harris' 2015-16 Game-by-Game Statistics

| Opponent             | Date     | gs | min | Total  |      | 3-Pointers |      | Free throws |      | Rebounds |     |     |     | pf | a | t/o | blk | stl | pts | avg |
|----------------------|----------|----|-----|--------|------|------------|------|-------------|------|----------|-----|-----|-----|----|---|-----|-----|-----|-----|-----|
|                      |          |    |     | fg-fga | pct  | 3fg-fga    | pct  | ft-fa       | pct  | off      | def | tot | avg |    |   |     |     |     |     |     |
| UNIVERSITY OF KANSAS | 11/23/15 | 3  |     | 0-1    | .000 | 0-0        | .000 | 0-0         | .000 | 0        | 0   | 0   | 0.0 | 0  | 0 | 0   | 0   | 0   | 0   | 0.0 |
| Totals               |          | 0  | 3   | 0-1    | .000 | 0-0        | .000 | 0-0         | .000 | 0        | 0   | 0   | 0.0 | 0  | 0 | 0   | 0   | 0   | 0   | 0.0 |

Games played: 1  
Minutes/game: 3.0  
FG Pct: 0.0

### Harris' Career Statistics

| Season  | gp-gs | min/avg | Total  |      | 3-Point |      | F-Throws |       | Rebounds |     |     |     | Scoring |    |     |    |     |     |     |     |
|---------|-------|---------|--------|------|---------|------|----------|-------|----------|-----|-----|-----|---------|----|-----|----|-----|-----|-----|-----|
|         |       |         | fg-fga | pct  | fg-fga  | pct  | ft-fa    | pct   | off      | def | tot | avg | pf      | fo | ast | to | blk | stl | pts | avg |
| 2014-15 | 6-0   | 34/5.7  | 2-13   | .154 | 1-4     | .250 | 2-2      | 1.000 | 3        | 2   | 5   | 0.8 | 3       | 0  | 3   | 4  | 1   | 2   | 7   | 1.2 |
| 2015-16 | 1-0   | 3/3.0   | 0-1    | .000 | 0-0     | .000 | 0-0      | .000  | 0        | 0   | 0   | 0.0 | 0       | 0  | 0   | 0  | 0   | 0   | 0   | 0.0 |
| TOTAL   | 7-0   | 37/5.3  | 2-14   | .143 | 1-4     | .250 | 2-2      | 1.000 | 3        | 2   | 5   | 0.7 | 3       | 0  | 3   | 4  | 1   | 2   | 7   | 1.0 |





# Malena WASHINGTON

Guard • 5-6 • Junior • 1L • Beaumont, Texas (Central HS/ Tyler JC)

# #14

## TOP PERFORMANCES

### POINTS

Season: 16, vs. Kansas (11/23/15)  
Career: 16, 2x, last vs. Kansas (11/23/15)

### REBOUNDS

Season: 3, vs. Toledo (11/18/15)  
Career: 7, at Wake Forest (12/07/14)

### ASSISTS

Season: 4, 3x, last at San Diego (11/21/15)  
Career: 4, 5x, last at San Diego (11/21/15)

### STEALS

Season: 2, 2x, last vs. Howard (11/18/15)  
Career: 2, 6x, last vs. Howard (11/18/15)

### BLOCKS

Season:  
Career: 1, vs. Oregon (01/25/15)

### FIELD GOALS MADE

Season: 6, vs. Kansas (11/23/15)  
Career: 6, 3x, last vs. Kansas (11/23/15)

### 3-PT FIELD GOALS MADE

Season: 2, 2x, last at San Diego (11/21/15)  
Career: 3, at UCLA (02/22/15)

### FREE THROWS MADE

Season: 3, vs. Kansas (11/23/15)  
Career: 6, at Utah (01/30/15)

### MINUTES PLAYED

Season: 27, at Toledo (11/14/15)  
Career: 37, vs. Oregon (01/25/15)

Played 27 minutes off the bench in the win over Toledo...Hit two of her five 3-pointers...Tied her career high with four assists...  
Posted four assists in back-to-back games after dishing out four against Howard...

## Washington's 2014-15 Game-by-Game Statistics

| Opponent             | Date     | gs | min | Total  |      | 3-Pointers |      | Free throws |       | Rebounds |     |     |     | pf | a  | t/o | blk | stl | pts | avg  |
|----------------------|----------|----|-----|--------|------|------------|------|-------------|-------|----------|-----|-----|-----|----|----|-----|-----|-----|-----|------|
|                      |          |    |     | fg-fga | pct  | 3fg-fga    | pct  | ft-fa       | pct   | off      | def | tot | avg |    |    |     |     |     |     |      |
| at Toledo            | 11/14/15 |    | 27  | 4-13   | .308 | 2-5        | .400 | 0-0         | .000  | 0        | 1   | 1   | 1.0 | 2  | 4  | 1   | 0   | 2   | 10  | 10.0 |
| HOWW                 | 11/18/15 |    | 26  | 2-8    | .250 | 1-3        | .333 | 2-2         | 1.000 | 0        | 3   | 3   | 2.0 | 2  | 4  | 2   | 0   | 2   | 7   | 8.5  |
| at San Diego         | 11/21/15 |    | 9   | 4-10   | .400 | 2-4        | .500 | 0-0         | .000  | 1        | 0   | 1   | 1.7 | 4  | 4  | 6   | 0   | 0   | 10  | 9.0  |
| UNIVERSITY OF KANSAS | 11/23/15 |    | 22  | 6-12   | .500 | 1-2        | .500 | 3-3         | 1.000 | 0        | 2   | 2   | 1.8 | 2  | 0  | 3   | 0   | 1   | 16  | 10.8 |
| Totals               |          | 0  | 84  | 16-43  | .372 | 6-14       | .429 | 5-5         | 1.000 | 1        | 6   | 7   | 1.8 | 10 | 12 | 12  | 0   | 5   | 43  | 10.8 |

Games played: 4  
Minutes/game: 21.0  
Points/game: 10.8  
FG Pct: 37.2  
3FG Pct: 42.9  
FT Pct: 100.0

Rebounds/game: 1.8  
Assists/game: 3.0  
Turnovers/game: 3.0  
Assist/turnover ratio: 1.0  
Steals/game: 1.3

## Washington's Career Statistics

| Season  | gp-gs | min/avg  | Total  |      | 3-Point |      | F-Throws |       | Rebounds |     |     |     | Scoring |    |     |    |     |     |     |      |
|---------|-------|----------|--------|------|---------|------|----------|-------|----------|-----|-----|-----|---------|----|-----|----|-----|-----|-----|------|
|         |       |          | fg-fga | pct  | fg-fga  | pct  | ft-fa    | pct   | off      | def | tot | avg | pf      | fo | ast | to | blk | stl | pts | avg  |
| 2014-15 | 30-25 | 724/24.1 | 75-220 | .341 | 9-45    | .200 | 47-60    | .783  | 17       | 45  | 62  | 2.1 | 55      | 1  | 64  | 82 | 1   | 16  | 206 | 6.9  |
| 2015-16 | 4-0   | 84/21.0  | 16-43  | .372 | 6-14    | .429 | 5-5      | 1.000 | 1        | 6   | 7   | 1.8 | 10      | 0  | 12  | 12 | 0   | 5   | 43  | 10.8 |
| TOTAL   | 34-25 | 808/23.8 | 91-263 | .346 | 15-59   | .254 | 52-65    | .800  | 18       | 51  | 69  | 2.0 | 65      | 1  | 76  | 94 | 1   | 21  | 249 | 7.3  |





# Keyahndra CANNON

Guard • 5-9 • Senior • 3L • San Diego, Calif. (Mission Bay HS)

# #15

## TOP PERFORMANCES

### POINTS

Season: 8, at San Diego (11/21/15)  
Career: 14, 2x, last at Utah (01/30/15)

### REBOUNDS

Season: 3, 2x, last at San Diego (11/21/15)  
Career: 6, at Utah (01/30/15)

### ASSISTS

Season: 3, at Toledo (11/14/15)  
Career: 6, at Oregon (03/02/14)

### STEALS

Season: 3, vs. Howard (11/18/15)  
Career: 3, vs. Howard (11/18/15)

### BLOCKS

Season:  
Career: 1, 13x, last at Oregon State (02/15/15)

### FIELD GOALS MADE

Season: 4, at San Diego (11/21/15)  
Career: 5, 7x, last at at Oregon (02/13/15)

### 3-PT FIELD GOALS MADE

Season: 1, vs. Howard (11/18/15)  
Career: 4 vs. Arkansas-Pine Bluff (12/29/13)

### FREE THROWS MADE

Season: 1, vs. Howard (11/18/15)  
Career: 4, at Utah (01/30/15)

### MINUTES PLAYED

Season: 35, at San Diego (11/21/15)  
Career: 40, at Stanford (02/16/14)

The lone senior on the roster started against Toledo and played 26 minutes...Had a key bucket in the second half to put the Wild-cats up two in the final minutes of the game...Had a career-high three steals against Howard...

### Cannon's 2015-16 Game-by-Game Statistics

| Opponent             | Date     | gs | min | Total  |      | 3-Pointers |       | Free throws |       | Rebounds |     |     |     | pf  | a | t/o | blk | stl | pts | avg |     |
|----------------------|----------|----|-----|--------|------|------------|-------|-------------|-------|----------|-----|-----|-----|-----|---|-----|-----|-----|-----|-----|-----|
|                      |          |    |     | fg-fga | pct  | 3fg-fga    | pct   | ft-fta      | pct   | off      | def | tot | avg |     |   |     |     |     |     |     |     |
| at Toledo            | 11/14/15 | *  | 26  | 1-4    | .250 | 0-0        | .000  | 0-0         | .000  | 0        | 1   | 1   | 1.0 | 0   | 3 | 3   | 0   | 1   | 2   | 2.0 |     |
| HOWW                 | 11/18/15 | *  | 22  | 2-7    | .286 | 1-1        | 1.000 | 1-1         | 1.000 | 1        | 2   | 3   | 2.0 | 2   | 0 | 4   | 0   | 3   | 6   | 4.0 |     |
| at San Diego         | 11/21/15 | *  | 35  | 4-6    | .667 | 0-0        | .000  | 0-0         | .000  | 0        | 3   | 3   | 2.3 | 2   | 1 | 1   | 0   | 0   | 8   | 5.3 |     |
| UNIVERSITY OF KANSAS | 11/23/15 | *  | 18  | 2-4    | .500 | 0-1        | .000  | 0-0         | .000  | 0        | 2   | 2   | 2.3 | 1   | 0 | 2   | 0   | 0   | 4   | 5.0 |     |
| Totals               |          |    | 4   | 101    | 9-21 | .429       | 1-2   | .500        | 1-1   | 1.000    | 1   | 8   | 9   | 2.3 | 5 | 4   | 10  | 0   | 4   | 20  | 5.0 |

Games played: 4  
Minutes/game: 25.3  
Points/game: 5.0  
FG Pct: 42.9  
3FG Pct: 50.0  
FT Pct: 100.0

Rebounds/game: 2.3  
Assists/game: 1.0  
Turnovers/game: 2.5  
Assist/turnover ratio: 0.4  
Steals/game: 1.0

### Cannon's Career Statistics

| Season  | gp-gs | min/avg   | Total   |      | 3-Point |      | F-Throws |       | Rebounds |     |     |     | Scoring |    |     |     |     |     |     |     |
|---------|-------|-----------|---------|------|---------|------|----------|-------|----------|-----|-----|-----|---------|----|-----|-----|-----|-----|-----|-----|
|         |       |           | fg-fga  | pct  | fg-fga  | pct  | ft-fta   | pct   | off      | def | tot | avg | pf      | fo | ast | to  | blk | stl | pts | avg |
| 2012-13 | 30-0  | 468/15.6  | 42-126  | .333 | 8-28    | .286 | 25-31    | .806  | 24       | 41  | 65  | 2.2 | 58      | 2  | 15  | 39  | 8   | 11  | 117 | 3.9 |
| 2013-14 | 29-1  | 546/18.8  | 46-124  | .371 | 9-21    | .429 | 18-34    | .529  | 19       | 41  | 60  | 2.1 | 41      | 0  | 22  | 45  | 2   | 16  | 119 | 4.1 |
| 2014-15 | 30-16 | 718/23.9  | 67-196  | .342 | 10-43   | .233 | 21-34    | .618  | 20       | 48  | 68  | 2.3 | 46      | 0  | 44  | 49  | 3   | 21  | 165 | 5.5 |
| 2015-16 | 4-4   | 101/25.3  | 9-21    | .429 | 1-2     | .500 | 1-1      | 1.000 | 1        | 8   | 9   | 2.3 | 5       | 0  | 4   | 10  | 0   | 4   | 20  | 5.0 |
| TOTAL   | 93-21 | 1833/19.7 | 164-467 | .351 | 28-94   | .298 | 65-100   | .650  | 64       | 138 | 202 | 2.2 | 150     | 2  | 85  | 143 | 13  | 52  | 421 | 4.5 |





# Farrin BELL

Guard • 6-0 • Redshirt Junior • 1L • Richardson, Texas (Richardson HS/SMU)

## #20

### TOP PERFORMANCES

#### POINTS

Season: 4, at Toledo (11/14/15)  
 Career: 4, at Toledo (11/14/15)

#### REBOUNDS

Season: 5, vs. Howard (11/18/15)  
 Career: 5, vs. Howard (11/18/15)

#### ASSISTS

Season: 4, 2x, last vs. Kansas (11/23/15)  
 Career: 4, 2x, last vs. Kansas (11/23/15)

#### STEALS

Season:  
 Career:

#### BLOCKS

Season: 1, at Toledo (11/14/15)  
 Career: 1, at Toledo (11/14/15)

#### FIELD GOALS MADE

Season: 1, 3x, last at San Diego (11/21/15)  
 Career: 1 4x, last at San Diego (11/21/15)

#### 3-PT FIELD GOALS MADE

Season:  
 Career:

#### FREE THROWS MADE

Season: 2, at Toledo (11/14/15)  
 Career: 2, at Toledo (11/14/15)

#### MINUTES PLAYED

Season: 17, vs. Kansas (11/23/15)  
 Career: 17, vs. Kansas (11/23/15)

Played 10 minutes off the bench and scored four points against Toledo...Posted a career-high five rebounds against Howard...

### Bell's 2015-16 Game-by-Game Statistics

| Opponent             | Date     | gs | min | Total  |      | 3-Pointers |      | Free throws |      | Rebounds |     |     |     | pf | a | t/o | blk | stl | pts | avg |
|----------------------|----------|----|-----|--------|------|------------|------|-------------|------|----------|-----|-----|-----|----|---|-----|-----|-----|-----|-----|
|                      |          |    |     | fg-fga | pct  | 3fg-fga    | pct  | ft-fta      | pct  | off      | def | tot | avg |    |   |     |     |     |     |     |
| at Toledo            | 11/14/15 | 10 | 1-1 | 1.000  | 0-0  | .000       | 2-4  | .500        | 0    | 0        | 0   | 0.0 | 1   | 0  | 1 | 1   | 0   | 4   | 4.0 |     |
| HOWW                 | 11/18/15 | 12 | 1-3 | .333   | 0-0  | .000       | 1-2  | .500        | 2    | 3        | 5   | 2.5 | 2   | 4  | 1 | 0   | 0   | 3   | 3.5 |     |
| at San Diego         | 11/21/15 | 8  | 1-1 | 1.000  | 0-0  | .000       | 0-0  | .000        | 1    | 2        | 3   | 2.7 | 2   | 1  | 0 | 0   | 0   | 2   | 3.0 |     |
| UNIVERSITY OF KANSAS | 11/23/15 | 17 | 1-2 | .500   | 0-0  | .000       | 1-4  | .250        | 2    | 1        | 3   | 2.8 | 1   | 4  | 1 | 1   | 0   | 3   | 3.0 |     |
| Totals               |          | 0  | 47  | 4-7    | .571 | 0-0        | .000 | 4-10        | .400 | 5        | 6   | 11  | 2.8 | 6  | 9 | 3   | 2   | 0   | 12  | 3.0 |

Games played: 4

Minutes/game: 11.8

Points/game: 3.0

FG Pct: 57.1

FT Pct: 40.0

Rebounds/game: 2.8

Assists/game: 2.3

Turnovers/game: 0.8

Assist/turnover ratio: 3.0

Blocks/game: 0.5

### Bell's Career Statistics

| Season  | gp-gs | min/avg | Total  |      | 3-Point |      | F-Throws |      | Rebounds |     |     |     | Scoring |    |     |    |     |     |     |     |
|---------|-------|---------|--------|------|---------|------|----------|------|----------|-----|-----|-----|---------|----|-----|----|-----|-----|-----|-----|
|         |       |         | fg-fga | pct  | fg-fga  | pct  | ft-fta   | pct  | off      | def | tot | avg | pf      | fo | ast | to | blk | stl | pts | avg |
| 2014-15 | 2-0   | 26/13.0 | 1-6    | .167 | 0-1     | .000 | 0-0      | .000 | 0        | 0   | 0   | 0.0 | 3       | 0  | 2   | 1  | 0   | 1   | 2   | 1.0 |
| 2015-16 | 4-0   | 47/11.8 | 4-7    | .571 | 0-0     | .000 | 4-10     | .400 | 5        | 6   | 11  | 2.8 | 6       | 0  | 9   | 3  | 2   | 0   | 12  | 3.0 |
| TOTAL   | 6-0   | 73/12.2 | 5-13   | .385 | 0-1     | .000 | 4-10     | .400 | 5        | 6   | 11  | 1.8 | 9       | 0  | 11  | 4  | 2   | 1   | 14  | 2.3 |



# Destiny GRAHAM

Forward • 6-3 • Freshman • HS • East Palo Alto, Calif. (Eastside College Prep)

# #21

The freshman played a bench-high 28 minutes against Toledo and had nine rebounds, one of Lauren Evans' high...

## TOP PERFORMANCES

### POINTS

Season: 3, at San Diego (11/21/15)  
Career: 3, at San Diego (11/21/15)

### REBOUNDS

Season: 9, at Toledo (11/14/15)  
Career: 9, at Toledo (11/14/15)

### ASSISTS

Season: 3, at Toledo (11/14/15)  
Career: 3, at Toledo (11/14/15)

### STEALS

Season: 3, at Toledo (11/14/15)  
Career: 3, at Toledo (11/14/15)

### BLOCKS

Season: 1, 2x, last at San Diego (11/21/15)  
Career: 1, 2x, last at San Diego (11/21/15)

### FIELD GOALS MADE

Season: 1, 2x, last at San Diego (11/21/15)  
Career: 1, 2x, last at San Diego (11/21/15)

### 3-PT FIELD GOALS MADE

Season:  
Career:

### FREE THROWS MADE

Season: 2, vs. Kansas (11/23/15)  
Career: 2, vs. Kansas (11/23/15)

### MINUTES PLAYED

Season: 28, at Toledo (11/14/15)  
Career: 28, at Toledo (11/14/15)

## Graham's 2015-16 Game-by-Game Statistics

| Opponent             | Date     | gs | min | Total  |      | 3-Pointers |      | Free throws |       | Rebounds |     |     |     | pf | a | t/o | blk | stl | pts | avg |
|----------------------|----------|----|-----|--------|------|------------|------|-------------|-------|----------|-----|-----|-----|----|---|-----|-----|-----|-----|-----|
|                      |          |    |     | fg-fga | pct  | 3fg-fga    | pct  | ft-fa       | pct   | off      | def | tot | avg |    |   |     |     |     |     |     |
| at Toledo            | 11/14/15 | 28 | 28  | 1-4    | .250 | 0-0        | .000 | 0-2         | .000  | 5        | 4   | 9   | 9.0 | 2  | 3 | 0   | 1   | 3   | 2   | 2.0 |
| HOWW                 | 11/18/15 | 16 | 16  | 0-1    | .000 | 0-0        | .000 | 0-0         | .000  | 1        | 0   | 1   | 5.0 | 4  | 1 | 0   | 0   | 0   | 0   | 1.0 |
| at San Diego         | 11/21/15 | 9  | 9   | 1-2    | .500 | 0-0        | .000 | 1-1         | 1.000 | 0        | 2   | 2   | 4.0 | 2  | 0 | 0   | 1   | 0   | 3   | 1.7 |
| UNIVERSITY OF KANSAS | 11/23/15 | 14 | 14  | 0-2    | .000 | 0-0        | .000 | 2-2         | 1.000 | 2        | 2   | 4   | 4.0 | 2  | 0 | 0   | 0   | 0   | 2   | 1.8 |
| Totals               |          | 0  | 67  | 2-9    | .222 | 0-0        | .000 | 3-5         | .600  | 8        | 8   | 16  | 4.0 | 10 | 4 | 0   | 2   | 3   | 7   | 1.8 |

Games played: 4  
Minutes/game: 16.8  
Points/game: 1.8  
FG Pct: 22.2  
FT Pct: 60.0

Rebounds/game: 4.0  
Assists/game: 1.0  
Assist/turnover ratio: 99.9  
Steals/game: 0.8  
Blocks/game: 0.5

## Graham's Career Statistics

| Season  | gp-gs | min/avg | Total  |      | 3-Point |      | F-Throws |      | Rebounds |     |     |     | Scoring |    |     |    |     |     |     |     |
|---------|-------|---------|--------|------|---------|------|----------|------|----------|-----|-----|-----|---------|----|-----|----|-----|-----|-----|-----|
|         |       |         | fg-fga | pct  | fg-fga  | pct  | ft-fa    | pct  | off      | def | tot | avg | pf      | fo | ast | to | blk | stl | pts | avg |
| 2015-16 | 4-0   | 67/16.8 | 2-9    | .222 | 0-0     | .000 | 3-5      | .600 | 8        | 8   | 16  | 4.0 | 10      | 0  | 4   | 0  | 2   | 3   | 7   | 1.8 |
| TOTAL   | 4-0   | 67/16.8 | 2-9    | .222 | 0-0     | .000 | 3-5      | .600 | 8        | 8   | 16  | 4.0 | 10      | 0  | 4   | 0  | 2   | 3   | 7   | 1.8 |





# Michal MILLER

Guard • 5-7 • Freshman • HS • Michigan City, Ind. (Michigan City HS)

# #23

Hit her first career 3 -pointer in the first half of the Toledo game...Poured in four 3-pointers against Howard and finished with a career-high 16 points...

## TOP PERFORMANCES

### POINTS

Season: 16, vs. Howard (11/18/15)  
Career: 16, vs. Howard (11/18/15)

### REBOUNDS

Season: 2, vs. Howard (11/18/15)  
Career: 2, vs. Howard (11/18/15)

### ASSISTS

Season:  
Career:

### STEALS

Season: 2, vs. Howard (11/18/15)  
Career: 2, vs. Howard (11/18/15)

### BLOCKS

Season:  
Career:

### FIELD GOALS MADE

Season: 5, vs. Howard (11/18/15)  
Career: 5, vs. Howard (11/18/15)

### 3-PT FIELD GOALS MADE

Season: 4, vs. Howard (11/18/15)  
Career: 4, vs. Howard (11/18/15)

### FREE THROWS MADE

Season: 2, vs. Howard (11/18/15)  
Career: 2, vs. Howard (11/18/15)

### MINUTES PLAYED

Season: 14, vs. Howard (11/18/15)  
Career: 14, vs. Howard (11/18/15)

## Miller's 2015-16 Game-by-Game Statistics

| Opponent             | Date     | gs | min | Total  |      | 3-Pointers |      | Free throws |      | Rebounds |     |     |     | pf | a | t/o | blk | stl | pts | avg |
|----------------------|----------|----|-----|--------|------|------------|------|-------------|------|----------|-----|-----|-----|----|---|-----|-----|-----|-----|-----|
|                      |          |    |     | fg-fga | pct  | 3fg-fga    | pct  | ft-fta      | pct  | off      | def | tot | avg |    |   |     |     |     |     |     |
| at Toledo            | 11/14/15 | 5  | 1-4 | .250   | 1-2  | .500       | 0-0  | .000        | 1    | 0        | 1   | 1.0 | 0   | 0  | 0 | 0   | 0   | 3   | 3.0 |     |
| HOWW                 | 11/18/15 | 14 | 5-7 | .714   | 4-6  | .667       | 2-4  | .500        | 0    | 2        | 2   | 1.5 | 2   | 0  | 3 | 0   | 2   | 16  | 9.5 |     |
| at San Diego         | 11/21/15 | 6  | 0-1 | .000   | 0-1  | .000       | 0-0  | .000        | 0    | 0        | 0   | 1.0 | 0   | 0  | 0 | 0   | 1   | 0   | 6.3 |     |
| UNIVERSITY OF KANSAS | 11/23/15 | 5  | 1-1 | 1.000  | 1-1  | 1.000      | 0-0  | .000        | 1    | 0        | 1   | 1.0 | 1   | 0  | 0 | 0   | 3   | 5.5 |     |     |
| Totals               |          | 0  | 30  | 7-13   | .538 | 6-10       | .600 | 2-4         | .500 | 2        | 2   | 4   | 1.0 | 3  | 0 | 3   | 0   | 3   | 22  | 5.5 |

Games played: 4  
Minutes/game: 7.5  
Points/game: 5.5  
FG Pct: 53.8  
3FG Pct: 60.0  
FT Pct: 50.0

Rebounds/game: 1.0  
Turnovers/game: 0.8  
Steals/game: 0.8

## Miller's Career Statistics

| Season  | gp-gs | min/avg | Total  |      | 3-Point |      | F-Throws |      | Rebounds |     |     |     | Scoring |    |     |    |     |     |     |     |
|---------|-------|---------|--------|------|---------|------|----------|------|----------|-----|-----|-----|---------|----|-----|----|-----|-----|-----|-----|
|         |       |         | fg-fga | pct  | fg-fga  | pct  | ft-fta   | pct  | off      | def | tot | avg | pf      | fo | ast | to | blk | stl | pts | avg |
| 2015-16 | 4-0   | 30/7.5  | 7-13   | .538 | 6-10    | .600 | 2-4      | .500 | 2        | 2   | 4   | 1.0 | 3       | 0  | 0   | 3  | 0   | 3   | 22  | 5.5 |
| TOTAL   | 4-0   | 30/7.5  | 7-13   | .538 | 6-10    | .600 | 2-4      | .500 | 2        | 2   | 4   | 1.0 | 3       | 0  | 0   | 3  | 0   | 3   | 22  | 5.5 |





# LaBrittney JONES

Forward • 6-1 • Junior • 2L • Cedar Hill, Texas (Cedar Hill HS)

# #24

Missed Toledo game with a foot injury...

## TOP PERFORMANCES

### POINTS

Season:  
Career: 30, vs. Oregon (01/25/15)

### REBOUNDS

Season:  
Career: 15, vs. Texas Tech (12/15/13)

### ASSISTS

Season:  
Career: 2, 9x, last vs. Stanford (02/08/15)

### STEALS

Season:  
Career: 3, 2x last at Stanford (02/16/14)

### BLOCKS

Season:  
Career: 6, at Colorado (02/01/15)

### FIELD GOALS MADE

Season:  
Career: 10, vs. Oregon (01/25/15)

### 3-PT FIELD GOALS MADE

Season:  
Career: 1, at Colorado (02/01/15)

### FREE THROWS MADE

Season:  
Career: 10, vs. Oregon (01/25/15)

### MINUTES PLAYED

Season:  
Career: 36, vs. Iona (11/08/13)

## Jones' 2015-16 Game-by-Game Statistics

### Jones' Career Statistics

| Season  | gp-gs |    | Total  |      | 3-Point |     | F-Throws |     | Rebounds |     |     |      | Scoring |     |     |     |     |     |     |     |    |    |     |     |
|---------|-------|----|--------|------|---------|-----|----------|-----|----------|-----|-----|------|---------|-----|-----|-----|-----|-----|-----|-----|----|----|-----|-----|
|         | gp    | gs | fg-fga | pct  | fg-fga  | pct | ft-fa    | pct | off      | def | tot | avg  | pf      | fo  | ast | to  | blk | stl | pts | avg |    |    |     |     |
| 2013-14 | 30    | 30 | 748    | 24.9 | 84      | 182 | .462     | 0-1 | .000     | 55  | 75  | .733 | 47      | 126 | 173 | 5.8 | 76  | 1   | 18  | 42  | 32 | 23 | 223 | 7.4 |
| 2014-15 | 30    | 17 | 704    | 23.5 | 101     | 236 | .428     | 1-4 | .250     | 68  | 89  | .764 | 66      | 104 | 170 | 5.7 | 66  | 0   | 12  | 39  | 44 | 13 | 271 | 9.0 |
| TOTAL   | 60    | 47 | 1452   | 24.2 | 185     | 418 | .443     | 1-5 | .200     | 123 | 164 | .750 | 113     | 230 | 343 | 5.7 | 142 | 1   | 30  | 81  | 76 | 36 | 494 | 8.2 |







# Dejza JAMES

Forward • 6-1 • Junior • 1L • Elk Grove, Calif. (Elk Grove HS)

# #31

## TOP PERFORMANCES

### POINTS

Season: 8, at San Diego (11/21/15)  
Career: 14, vs. Grambling (12/03/14)

### REBOUNDS

Season: 10, at San Diego, (11/21/15)  
Career: 11, vs. UCSB (11/25/14)

### ASSISTS

Season: 2, vs. Kansas (11/23/15)  
Career: 2, vs. Kansas (11/23/15)

### STEALS

Season: 1, at San Diego (11/21/15)  
Career: 2, 3x, last vs. California (02/06/15)

### BLOCKS

Season: 3, at San Diego (11/21/15)  
Career: 3, at San Diego (11/21/15)

### FIELD GOALS MADE

Season: 4, at San Diego (11/21/15)  
Career: 6, 3x, vs. Washington (01/05/14)

### 3-PT FIELD GOALS MADE

Season: 1, vs. Kansas (11/23/15)  
Career: 1, vs. Kansas (11/23/15)

### FREE THROWS MADE

Season: 3, vs. Kansas (11/23/15)  
Career: 3, vs. Kansas (11/23/15)

### MINUTES PLAYED

Season: 21, at San Diego (11/21/15)  
Career: 29, vs. Michigan (11/09/13)

Sat out Toledo and Howard...Had eight points and 10 rebounds in her debut against San Diego...

## James' 2015-16 Game-by-Game Statistics

| Opponent             | Date     | gs | min  | Total  |      | 3-Pointers |       | Free throws |      | Rebounds |     |      |     | pf | a | t/o | blk | stl | pts | avg |
|----------------------|----------|----|------|--------|------|------------|-------|-------------|------|----------|-----|------|-----|----|---|-----|-----|-----|-----|-----|
|                      |          |    |      | fg-fga | pct  | 3fg-fga    | pct   | ft-fa       | pct  | off      | def | tot  | avg |    |   |     |     |     |     |     |
| at San Diego         | 11/21/15 | 21 | 4-10 | .400   | 0-0  | .000       | 0-2   | .000        | 2    | 8        | 10  | 10.0 | 4   | 0  | 3 | 0   | 1   | 8   | 8.0 |     |
| UNIVERSITY OF KANSAS | 11/23/15 | 17 | 1-6  | .167   | 1-1  | 1.000      | 3-6   | .500        | 2    | 3        | 5   | 7.5  | 1   | 2  | 1 | 0   | 0   | 6   | 7.0 |     |
| Totals               |          | 0  | 38   | 5-16   | .313 | 1-1        | 1.000 | 3-8         | .375 | 4        | 11  | 15   | 7.5 | 5  | 2 | 4   | 0   | 14  | 7.0 |     |

Games played: 2  
Minutes/game: 19.0  
Points/game: 7.0  
FG Pct: 31.3  
3FG Pct: 100.0  
FT Pct: 37.5

Rebounds/game: 7.5  
Assists/game: 1.0  
Turnovers/game: 2.0  
Assist/turnover ratio: 0.5  
Steals/game: 0.5

## James' Career Statistics

| Season  | gp-gs | min/avg  | Total  |      | 3-Point |       | F-Throws |      | Rebounds |     |     |     | Scoring |    |     |    |     |     |     |     |
|---------|-------|----------|--------|------|---------|-------|----------|------|----------|-----|-----|-----|---------|----|-----|----|-----|-----|-----|-----|
|         |       |          | fg-fga | pct  | fg-fga  | pct   | ft-fa    | pct  | off      | def | tot | avg | pf      | fo | ast | to | blk | stl | pts | avg |
| 2013-14 | 10-0  | 129/12.9 | 18-33  | .545 | 0-0     | .000  | 1-3      | .333 | 8        | 16  | 24  | 2.4 | 12      | 0  | 2   | 6  | 2   | 2   | 37  | 3.7 |
| 2014-15 | 30-0  | 395/13.2 | 48-124 | .387 | 0-0     | .000  | 13-27    | .481 | 37       | 51  | 88  | 2.9 | 40      | 0  | 6   | 13 | 4   | 8   | 109 | 3.6 |
| 2015-16 | 2-0   | 38/19.0  | 5-16   | .313 | 1-1     | 1.000 | 3-8      | .375 | 4        | 11  | 15  | 7.5 | 5       | 0  | 2   | 4  | 0   | 1   | 14  | 7.0 |
| TOTAL   | 42-0  | 562/13.4 | 71-173 | .410 | 1-1     | 1.000 | 17-38    | .447 | 49       | 78  | 127 | 3.0 | 57      | 0  | 10  | 23 | 6   | 11  | 160 | 3.8 |





# JaLea BENNETT

Guard • 6-0 • Sophomore • 1L • Grand Prairie, Texas (Mansfield Timberview)

# #33

## TOP PERFORMANCES

### POINTS

Season: 18, vs. Howard (11/18/15)  
 Career: 18, vs. Howard (11/18/15)

### REBOUNDS

Season: 5, vs. Kansas (11/23/15)  
 Career: 6, 3x, last vs. Utah (03/01/15)

### ASSISTS

Season: 2, at San Diego (11/21/15)  
 Career: 4, vs. Utah (03/01/15)

### STEALS

Season: 1, 2x, last vs. Howard (11/18/15)  
 Career: 2, vs. Stanford (02/08/15)

### BLOCKS

Season: 1, 2x, last at San Diego (11/21/15)  
 Career: 3, vs. Arizona State (01/08/15)

### FIELD GOALS MADE

Season: 7, vs. Howard (11/18/15)  
 Career: 7, 2x, last vs. Howard (11/18/15)

### 3-PT FIELD GOALS MADE

Season: 2, vs. Howard (11/18/15)  
 Career: 2, vs. Howard (11/18/15)

### FREE THROWS MADE

Season: 2, 2x, last vs. Kansas (11/23/15)  
 Career: 5, at Texas Tech (11/21/14)

### MINUTES PLAYED

Season: 23, vs. Kansas (11/23/15)  
 Career: 32, vs. Utah (03/01/15)

Started and played 15 minutes against Toledo in the season opener...Posted a career-high 18 points in 21 minutes against Howard...Knocked down both of her 3-pointers against the Bison...

## Bennett's 2014-15 Game-by-Game Statistics

| Opponent             | Date     | gs | min | Total  |       | 3-Pointers |       | Free throws |      | Rebounds |     |     |     |     | pts | avg |   |     |     |      |     |
|----------------------|----------|----|-----|--------|-------|------------|-------|-------------|------|----------|-----|-----|-----|-----|-----|-----|---|-----|-----|------|-----|
|                      |          |    |     | fg-fga | pct   | 3fg-fga    | pct   | ft-fa       | pct  | off      | def | tot | avg | pf  |     |     | a | t/o | blk | stl  |     |
| at Toledo            | 11/14/15 | *  | 15  | 1-4    | .250  | 0-1        | .000  | 1-2         | .500 | 0        | 1   | 1   | 1.0 | 3   | 0   | 0   | 1 | 1   | 3   | 3.0  |     |
| HOWW                 | 11/18/15 | *  | 21  | 7-12   | .583  | 2-2        | 1.000 | 2-4         | .500 | 3        | 1   | 4   | 2.5 | 3   | 1   | 1   | 0 | 1   | 18  | 10.5 |     |
| at San Diego         | 11/21/15 | *  | 22  | 0-3    | .000  | 0-0        | .000  | 0-0         | .000 | 0        | 0   | 0   | 1.7 | 2   | 2   | 0   | 1 | 0   | 0   | 7.0  |     |
| UNIVERSITY OF KANSAS | 11/23/15 | *  | 23  | 4-13   | .308  | 1-2        | .500  | 2-5         | .400 | 2        | 3   | 5   | 2.5 | 2   | 0   | 1   | 0 | 0   | 11  | 8.0  |     |
| Totals               |          |    | 4   | 81     | 12-32 | .375       | 3-5   | .600        | 5-11 | .455     | 5   | 5   | 10  | 2.5 | 10  | 3   | 2 | 2   | 2   | 32   | 8.0 |

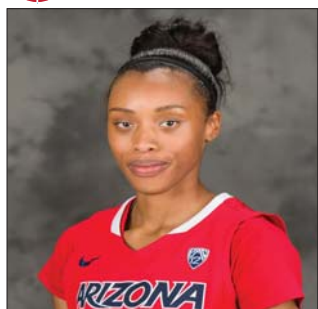
Games played: 4  
 Minutes/game: 20.3  
 Points/game: 8.0  
 FG Pct: 37.5  
 3FG Pct: 60.0  
 FT Pct: 45.5

Rebounds/game: 2.5  
 Assists/game: 0.8  
 Turnovers/game: 0.5  
 Assist/turnover ratio: 1.5  
 Steals/game: 0.5  
 Blocks/game: 0.5

## Bennett's Career Statistics

| Season  | gp-gs | min/avg  | Total  |      | 3-Point |      | F-Throws |      | Rebounds |     |     |     | Scoring |    |     |    |     |     |     |     |
|---------|-------|----------|--------|------|---------|------|----------|------|----------|-----|-----|-----|---------|----|-----|----|-----|-----|-----|-----|
|         |       |          | fg-fga | pct  | fg-fga  | pct  | ft-fa    | pct  | off      | def | tot | avg | pf      | fo | ast | to | blk | stl | pts | avg |
| 2014-15 | 30-14 | 524/17.5 | 48-125 | .384 | 2-15    | .133 | 37-55    | .673 | 37       | 33  | 70  | 2.3 | 62      | 1  | 36  | 43 | 7   | 15  | 135 | 4.5 |
| 2015-16 | 4-4   | 81/20.3  | 12-32  | .375 | 3-5     | .600 | 5-11     | .455 | 5        | 5   | 10  | 2.5 | 10      | 0  | 3   | 2  | 2   | 2   | 32  | 8.0 |
| TOTAL   | 34-18 | 605/17.8 | 60-157 | .382 | 5-20    | .250 | 42-66    | .636 | 42       | 38  | 80  | 2.4 | 72      | 1  | 39  | 45 | 9   | 17  | 167 | 4.9 |





# A'Shanti COLEMAN

Forward • 6-2 • Freshman • HS • San Francisco, Calif. (Sacred Heart Cathedral)

# #42

## TOP PERFORMANCES

### POINTS

Season: 8, vs. Howard (11/18/15)  
Career: 8, vs. Howard (11/18/15)

### REBOUNDS

Season: 5, vs. Howard (11/18/15)  
Career: 5, vs. Howard (11/18/15)

### ASSISTS

Season: 1, at Toledo (11/14/15)  
Career: 1, at Toledo (11/14/15)

### STEALS

Season: 3, vs. Howard (11/18/15)  
Career: 3, vs. Howard (11/18/15)

### BLOCKS

Season: 4, vs. Kansas (11/23/15)  
Career: 4, vs. Kansas (11/23/15)

### FIELD GOALS MADE

Season: 3, vs. Howard (11/18/15)  
Career: 3, vs. Howard (11/18/15)

### 3-PT FIELD GOALS MADE

Season:  
Career:

### FREE THROWS MADE

Season: 2, vs. Howard (11/18/15)  
Career: 2, vs. Howard (11/18/15)

### MINUTES PLAYED

Season: 28, vs. Howard (11/18/15)  
Career: 28, vs. Howard (11/18/15)

Started in her first career game against Toledo...Finished with eight points and five rebounds in her second career game against Howard...

### Coleman's 2015-16 Game-by-Game Statistics

| Opponent             | Date     | gs | min | Total  |      | 3-Pointers |      | Free throws |       | Rebounds |     |     |     | pf  | a | to | blk | stl | pts | avg |     |
|----------------------|----------|----|-----|--------|------|------------|------|-------------|-------|----------|-----|-----|-----|-----|---|----|-----|-----|-----|-----|-----|
|                      |          |    |     | fg-fga | pct  | 3fg-fga    | pct  | ft-fta      | pct   | off      | def | tot | avg |     |   |    |     |     |     |     |     |
| at Toledo            | 11/14/15 | *  | 12  | 1-2    | .500 | 0-0        | .000 | 0-0         | .000  | 0        | 0   | 0   | 0.0 | 2   | 1 | 0  | 1   | 0   | 2   | 2.0 |     |
| HOWW                 | 11/18/15 | *  | 28  | 3-6    | .500 | 0-0        | .000 | 2-2         | 1.000 | 1        | 4   | 5   | 2.5 | 3   | 0 | 1  | 0   | 3   | 8   | 5.0 |     |
| at San Diego         | 11/21/15 | *  | 15  | 1-2    | .500 | 0-0        | .000 | 0-0         | .000  | 0        | 1   | 1   | 2.0 | 2   | 0 | 0  | 1   | 0   | 2   | 4.0 |     |
| UNIVERSITY OF KANSAS | 11/23/15 | *  | 22  | 1-2    | .500 | 0-0        | .000 | 0-0         | .000  | 1        | 2   | 3   | 2.3 | 2   | 0 | 1  | 4   | 1   | 2   | 3.5 |     |
| Totals               |          |    | 4   | 77     | 6-12 | .500       | 0-0  | .000        | 2-2   | 1.000    | 2   | 7   | 9   | 2.3 | 9 | 1  | 2   | 6   | 4   | 14  | 3.5 |

Games played: 4  
Minutes/game: 19.3  
Points/game: 3.5  
FG Pct: 50.0  
FT Pct: 100.0

Rebounds/game: 2.3  
Assists/game: 0.3  
Turnovers/game: 0.5  
Assist/turnover ratio: 0.5  
Steals/game: 1.0  
Blocks/game: 1.5

### Coleman's Career Statistics

| Season  | gp-gs | min/avg | Total  |      | 3-Point |      | F-Throws |       | Rebounds |     |     |     | pf | fo | ast | to | blk | stl | Scoring |     |
|---------|-------|---------|--------|------|---------|------|----------|-------|----------|-----|-----|-----|----|----|-----|----|-----|-----|---------|-----|
|         |       |         | fg-fga | pct  | fg-fga  | pct  | ft-fta   | pct   | off      | def | tot | avg |    |    |     |    |     |     | pts     | avg |
| 2015-16 | 4-4   | 77/19.3 | 6-12   | .500 | 0-0     | .000 | 2-2      | 1.000 | 2        | 7   | 9   | 2.3 | 9  | 0  | 1   | 2  | 6   | 4   | 14      | 3.5 |
| TOTAL   | 4-4   | 77/19.3 | 6-12   | .500 | 0-0     | .000 | 2-2      | 1.000 | 2        | 7   | 9   | 2.3 | 9  | 0  | 1   | 2  | 6   | 4   | 14      | 3.5 |





**2015-16 Arizona Women's Basketball  
Arizona Combined Team Statistics (as of Nov 23, 2015)  
All games**

| RECORD:        | OVERALL | HOME | AWAY | NEUTRAL |
|----------------|---------|------|------|---------|
| ALL GAMES      | 3-1     | 2-0  | 1-1  | 0-0     |
| CONFERENCE     | 0-0     | 0-0  | 0-0  | 0-0     |
| NON-CONFERENCE | 3-1     | 2-0  | 1-1  | 0-0     |

| #              | Player            | gp-gs | min | avg  | Total  |      | 3-Point |       | F-Throw |       | Rebounds |     |     |      | pf | dq | a  | to | blk | stl | pts | avg  |
|----------------|-------------------|-------|-----|------|--------|------|---------|-------|---------|-------|----------|-----|-----|------|----|----|----|----|-----|-----|-----|------|
|                |                   |       |     |      | fg-fga | fg%  | 3fg-fga | 3fg%  | ft-fa   | ft%   | off      | def | tot | avg  |    |    |    |    |     |     |     |      |
| 03             | GRIFFEY, Taryn    | 4-4   | 89  | 22.3 | 17-32  | .531 | 11-19   | .579  | 2-6     | .333  | 2        | 9   | 11  | 2.8  | 5  | 0  | 12 | 6  | 2   | 3   | 47  | 11.8 |
| 14             | WASHINGTON, Malen | 4-0   | 84  | 21.0 | 16-43  | .372 | 6-14    | .429  | 5-5     | 1.000 | 1        | 6   | 7   | 1.8  | 10 | 0  | 12 | 12 | 0   | 5   | 43  | 10.8 |
| 33             | BENNETT, JaLea    | 4-4   | 81  | 20.3 | 12-32  | .375 | 3-5     | .600  | 5-11    | .455  | 5        | 5   | 10  | 2.5  | 10 | 0  | 3  | 2  | 2   | 2   | 32  | 8.0  |
| 31             | JAMES, Dejza      | 2-0   | 38  | 19.0 | 5-16   | .313 | 1-1     | 1.000 | 3-8     | .375  | 4        | 11  | 15  | 7.5  | 5  | 0  | 2  | 4  | 0   | 1   | 14  | 7.0  |
| 00             | WORKMAN, Breanna  | 4-4   | 105 | 26.3 | 8-16   | .500 | 0-2     | .000  | 6-11    | .545  | 5        | 20  | 25  | 6.3  | 10 | 0  | 7  | 15 | 1   | 4   | 22  | 5.5  |
| 23             | MILLER, Michal    | 4-0   | 30  | 7.5  | 7-13   | .538 | 6-10    | .600  | 2-4     | .500  | 2        | 2   | 4   | 1.0  | 3  | 0  | 0  | 3  | 0   | 3   | 22  | 5.5  |
| 15             | CANNON, Keyahndra | 4-4   | 101 | 25.3 | 9-21   | .429 | 1-2     | .500  | 1-1     | 1.000 | 1        | 8   | 9   | 2.3  | 5  | 0  | 4  | 10 | 0   | 4   | 20  | 5.0  |
| 10             | EVANS, Lauren     | 4-0   | 78  | 19.5 | 7-18   | .389 | 0-0     | .000  | 1-2     | .500  | 8        | 7   | 15  | 3.8  | 14 | 0  | 1  | 3  | 2   | 5   | 15  | 3.8  |
| 42             | COLEMAN, A'Shanti | 4-4   | 77  | 19.3 | 6-12   | .500 | 0-0     | .000  | 2-2     | 1.000 | 2        | 7   | 9   | 2.3  | 9  | 0  | 1  | 2  | 6   | 4   | 14  | 3.5  |
| 20             | BELL, Farrin      | 4-0   | 47  | 11.8 | 4-7    | .571 | 0-0     | .000  | 4-10    | .400  | 5        | 6   | 11  | 2.8  | 6  | 0  | 9  | 3  | 2   | 0   | 12  | 3.0  |
| 21             | GRAHAM, Destiny   | 4-0   | 67  | 16.8 | 2-9    | .222 | 0-0     | .000  | 3-5     | .600  | 8        | 8   | 16  | 4.0  | 10 | 0  | 4  | 0  | 2   | 3   | 7   | 1.8  |
| 11             | HARRIS, Cherice   | 1-0   | 3   | 3.0  | 0-1    | .000 | 0-0     | .000  | 0-0     | .000  | 0        | 0   | 0   | 0.0  | 0  | 0  | 0  | 0  | 0   | 0   | 0   | 0.0  |
| Team           |                   |       |     |      |        |      |         |       |         |       | 11       | 12  | 23  |      |    |    | 5  |    |     |     |     |      |
| Total.....     |                   | 4     | 800 |      | 93-220 | .423 | 28-53   | .528  | 34-65   | .523  | 54       | 101 | 155 | 38.8 | 87 | 0  | 55 | 65 | 17  | 34  | 248 | 62.0 |
| Opponents..... |                   | 4     | 800 |      | 66-202 | .327 | 13-54   | .241  | 53-75   | .707  | 48       | 87  | 135 | 33.8 | 75 | -  | 35 | 77 | 14  | 19  | 198 | 49.5 |

| TEAM STATISTICS        | ARIZ   | OPP    | Date                | Opponent             | Score   | Att. |
|------------------------|--------|--------|---------------------|----------------------|---------|------|
| SCORING                | 248    | 198    | 11/14/15            | at Toledo            | w 62-59 | 3713 |
| Points per game        | 62.0   | 49.5   | 11/18/15            | HOWW                 | w 65-28 | 778  |
| Scoring margin         | +12.5  | -      | 11/21/15            | at San Diego         | L 54-59 | 714  |
| FIELD GOALS-ATT        | 93-220 | 66-202 | 11/23/15            | UNIVERSITY OF KANSAS | w 67-52 | 6652 |
| Field goal pct         | .423   | .327   | * - Conference game |                      |         |      |
| 3 POINT FG-ATT         | 28-53  | 13-54  |                     |                      |         |      |
| 3-point FG pct         | .528   | .241   |                     |                      |         |      |
| 3-pt FG made per game  | 7.0    | 3.3    |                     |                      |         |      |
| FREE THROWS-ATT        | 34-65  | 53-75  |                     |                      |         |      |
| Free throw pct         | .523   | .707   |                     |                      |         |      |
| F-Throws made per game | 8.5    | 13.3   |                     |                      |         |      |
| REBOUNDS               | 155    | 135    |                     |                      |         |      |
| Rebounds per game      | 38.8   | 33.8   |                     |                      |         |      |
| Rebounding margin      | +5.0   | -      |                     |                      |         |      |
| ASSISTS                | 55     | 35     |                     |                      |         |      |
| Assists per game       | 13.8   | 8.8    |                     |                      |         |      |
| TURNOVERS              | 65     | 77     |                     |                      |         |      |
| Turnovers per game     | 16.3   | 19.3   |                     |                      |         |      |
| Turnover margin        | +3.0   | -      |                     |                      |         |      |
| Assist/turnover ratio  | 0.8    | 0.5    |                     |                      |         |      |
| STEALS                 | 34     | 19     |                     |                      |         |      |
| Steals per game        | 8.5    | 4.8    |                     |                      |         |      |
| BLOCKS                 | 17     | 14     |                     |                      |         |      |
| Blocks per game        | 4.3    | 3.5    |                     |                      |         |      |
| ATTENDANCE             | 7430   | 4427   |                     |                      |         |      |
| Home games-Avg/Game    | 2-3715 | 2-2214 |                     |                      |         |      |
| Neutral site-Avg/Game  | -      | 0-0    |                     |                      |         |      |

| Score by Periods | 1st | 2nd | 3rd | 4th | Totals |
|------------------|-----|-----|-----|-----|--------|
| Arizona          | 54  | 62  | 66  | 66  | 248    |
| Opponents        | 50  | 40  | 58  | 50  | 198    |





2015-16 Arizona Women's Basketball  
Arizona Team Game-by-Game Comparison (as of Nov 23, 2015)  
All games

| Opponent             | 1st   | 2nd   | Score | Mar | Total FG    | FG Pct    | 3-Pointers | 3FG Pct   | Free Throws | FT Pct    | Rebounds | Assist | T/Over | Block | Steal | Fouls |
|----------------------|-------|-------|-------|-----|-------------|-----------|------------|-----------|-------------|-----------|----------|--------|--------|-------|-------|-------|
| Toledo               | 29/23 | 33/36 | 62-59 | +3  | 24-56/21-51 | .429/.412 | 9-18/6-14  | .500/.429 | 5-13/11-17  | .385/.647 | 35/32 +3 | 17/12  | 16/15  | 5/2   | 11/5  | 16/16 |
| HOWW                 | 35/14 | 30/14 | 65-28 | +37 | 23-52/6-39  | .442/.154 | 9-15/1-7   | .600/.143 | 10-17/15-23 | .588/.652 | 38/30 +8 | 17/3   | 19/30  | 2/3   | 15/5  | 24/18 |
| San Diego            | 21/25 | 33/34 | 54-59 | (5) | 23-56/20-53 | .411/.377 | 3-8/2-13   | .375/.154 | 5-9/17-22   | .556/.773 | 37/35 +2 | 12/11  | 16/15  | 5/4   | 3/7   | 25/15 |
| UNIVERSITY OF KANSAS | 31/28 | 36/24 | 67-52 | +15 | 23-56/19-59 | .411/.322 | 7-12/4-20  | .583/.200 | 14-26/10-13 | .538/.769 | 45/38 +7 | 9/9    | 14/17  | 5/5   | 5/2   | 22/26 |

Note: Game totals are displayed in the format TEAM/OPPONENT for each category





**2015-16 Arizona Women's Basketball  
Arizona Game-by-Game Highs (as of Nov 23, 2015)  
All games**

| <b>Opponent</b>      | <b>Date</b> | <b>Score</b> | <b>Points</b>                         | <b>Rebounds</b>                                      | <b>Assists</b>                                      | <b>Steals</b>                                                                                | <b>Blocked shots</b>                                                                          |
|----------------------|-------------|--------------|---------------------------------------|------------------------------------------------------|-----------------------------------------------------|----------------------------------------------------------------------------------------------|-----------------------------------------------------------------------------------------------|
| at Toledo            | 11/14/15    | 62-59        | 18-GRIFFEY, Taryn                     | 10-EVANS, Lauren                                     | 4-GRIFFEY, Taryn<br>WASHINGTON, Mal                 | 3-EVANS, Lauren<br>GRAHAM, Destiny                                                           | 1-BENNETT, JaLea<br>EVANS, Lauren<br>COLEMAN, A'Shanti<br>GRAHAM, Destiny<br>BELL, Farrin     |
| HOWW                 | 11/18/15    | 65-28        | 18-BENNETT, JaLea                     | 5-COLEMAN, A'Shan<br>BELL, Farrin<br>WORKMAN, Breann | 4-GRIFFEY, Taryn<br>BELL, Farrin<br>WASHINGTON, Mal | 3-COLEMAN, A'Shan<br>CANNON, Keyahndr                                                        | 1-EVANS, Lauren<br>GRIFFEY, Taryn                                                             |
| at San Diego         | 11/21/15    | 54-59        | 10-WORKMAN, Breann<br>WASHINGTON, Mal | 10-JAMES, Dejza                                      | 4-WASHINGTON, Mal                                   | 1-JAMES, Dejza<br>WORKMAN, Breann<br>MILLER, Michal                                          | 1-GRAHAM, Destiny<br>COLEMAN, A'Shanti<br>BENNETT, JaLea<br>GRIFFEY, Taryn<br>WORKMAN, Breann |
| UNIVERSITY OF KANSAS | 11/23/15    | 67-52        | 17-GRIFFEY, Taryn                     | 6-WORKMAN, Breann                                    | 4-BELL, Farrin                                      | 1-GRIFFEY, Taryn<br>COLEMAN, A'Shanti<br>EVANS, Lauren<br>WORKMAN, Breann<br>WASHINGTON, Mal | 4-COLEMAN, A'Shan                                                                             |

