

Bridging research and policy:

*To improve children in child welfare's
behavioral health*



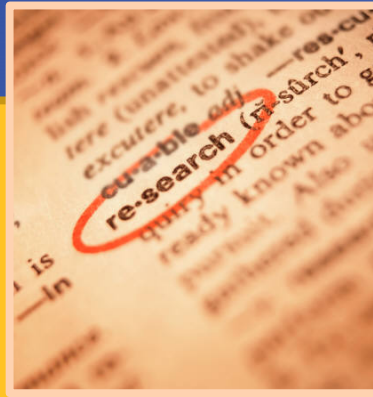
Sarah Zlotnik, MSW, MSPH
October 19th, 2012

Today's talk

- Overview PolicyLab's approach to bridging research and policy
- Highlight PolicyLab's research on the behavioral health of children in child welfare

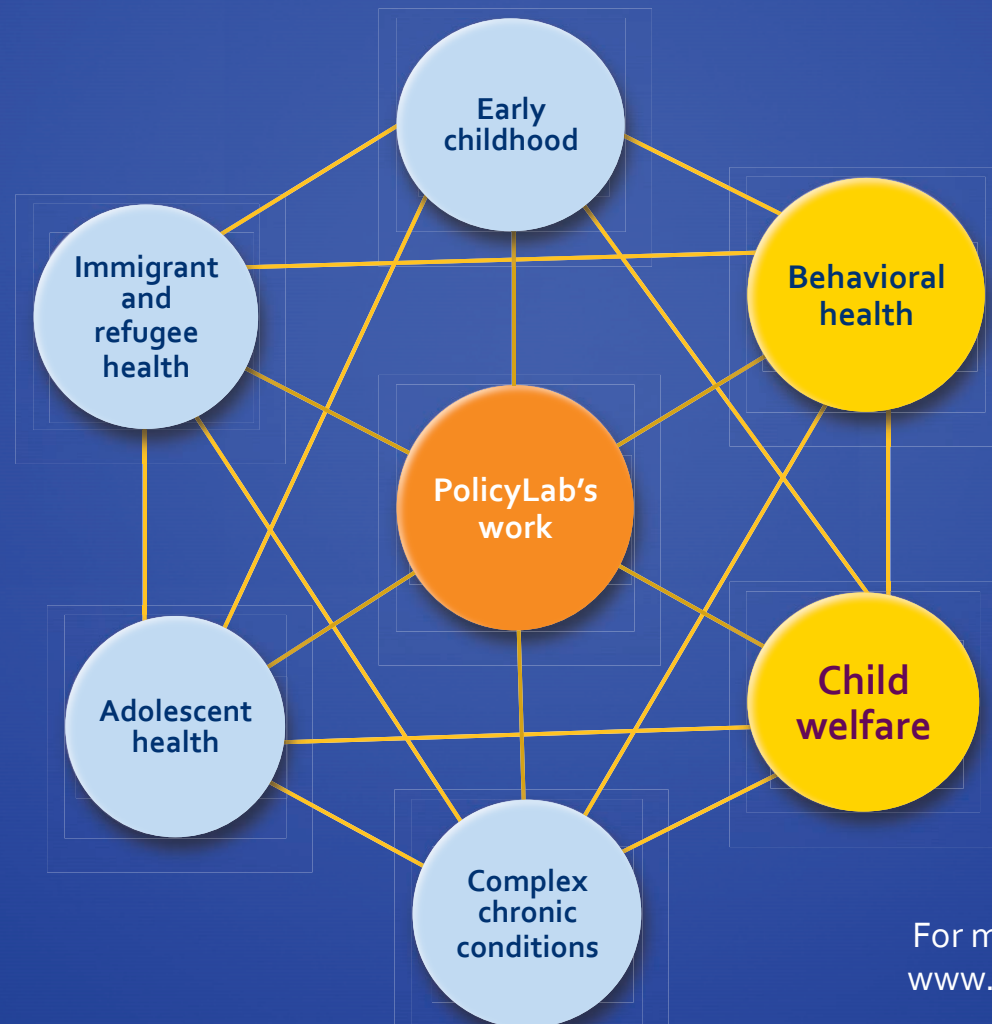
PolicyLab

at The Children's Hospital of Philadelphia



"Evidence to Action"

PolicyLab is engaged in projects across several domains of child health



For more information, please visit
www.research.chop.edu/policylab

The increasing use of psychotropic medications



PolicyLab's psychotropic medication study

Population data

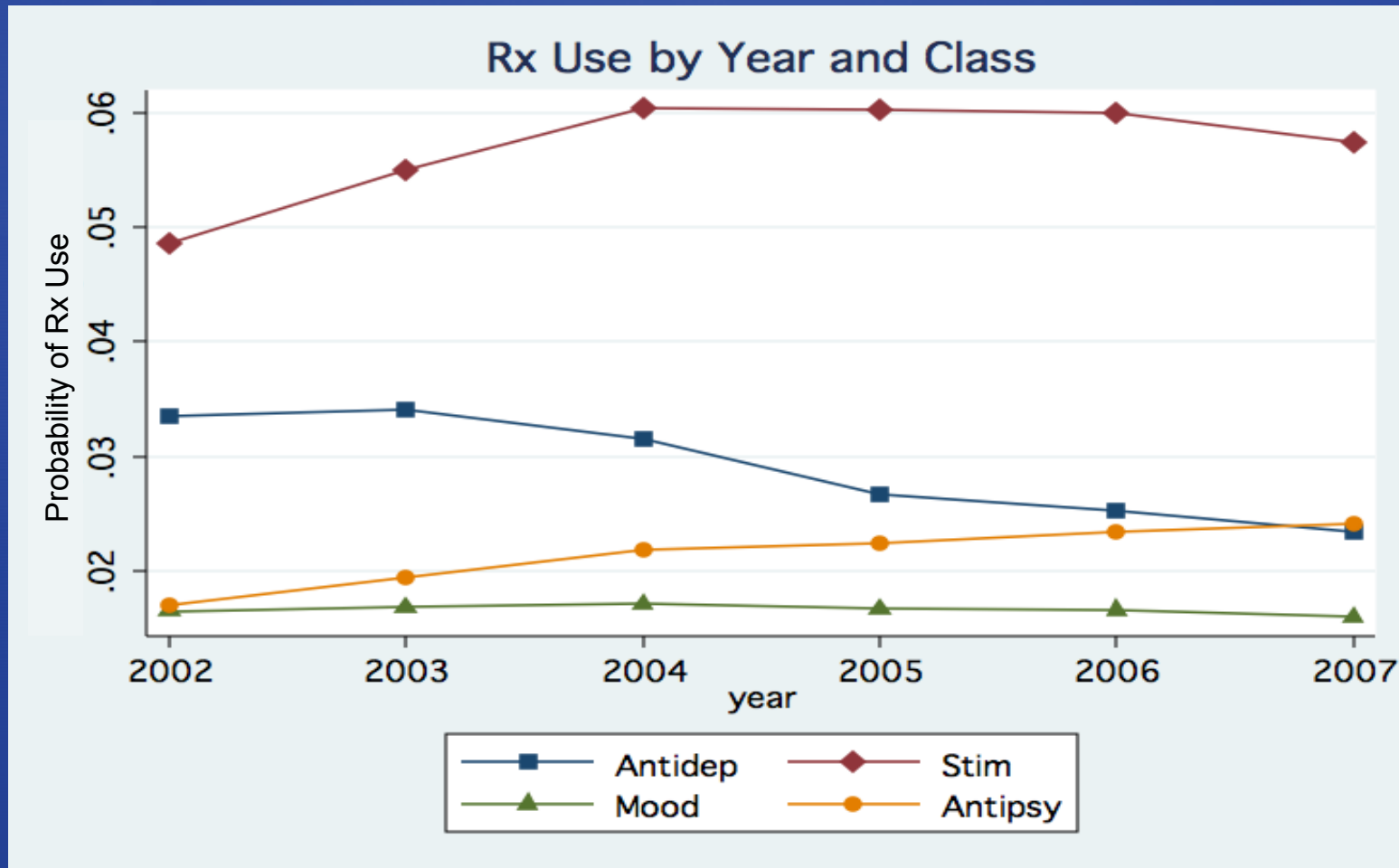
- National sample of Medicaid data, 2002-2009
- To determine trends in pediatric psychotropic medication use over time across all 50-states
 - Polypharmacy & antipsychotic medication use
 - Medicaid and foster care specific analyses
- AHRQ funded
- Led by David Rubin, MD, MSCE & Meredith Matone, MHS

PolicyLab's psychotropic medication study

Policy analysis

- Identify system-level factors influence exposure to psychotropic medication among children
- 16-state legal and policy review on:
 - Oversight & Red flags
 - Consent
 - Screening and Assessment
- Led by Kathleen Noonan, JD

Trajectories of psychotropic medication use by medication class



Increasing antipsychotic use in foster care

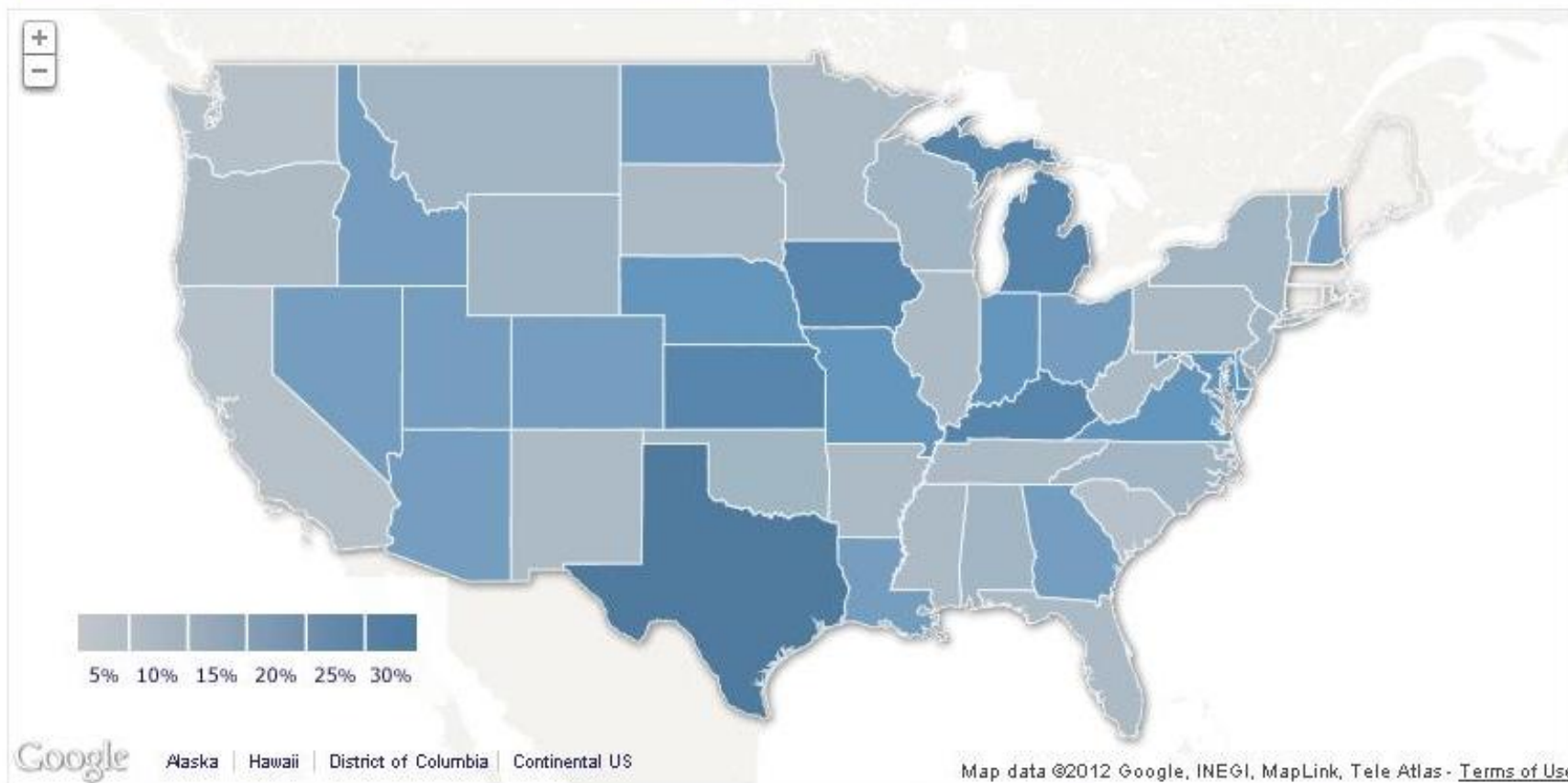
PSYCHOTROPIC MEDICATION USE AMONG CHILDREN IN FOSTER CARE IN THE UNITED STATES

PREVALENCE OF ANTIPSYCHOTIC USE

Select a year to highlight data

2002 2003 2004 2005 2006 2007

2002



Rubin D, Matone M, Huang Y-S, dosReis S, Feudtner C, Localio R. (2012). Interstate variation in trends of psychotropic medication use among Medicaid-enrolled children in foster care. *Children and Youth Services Review*, 34(8): 1492-1499.

Increasing antipsychotic use in foster care

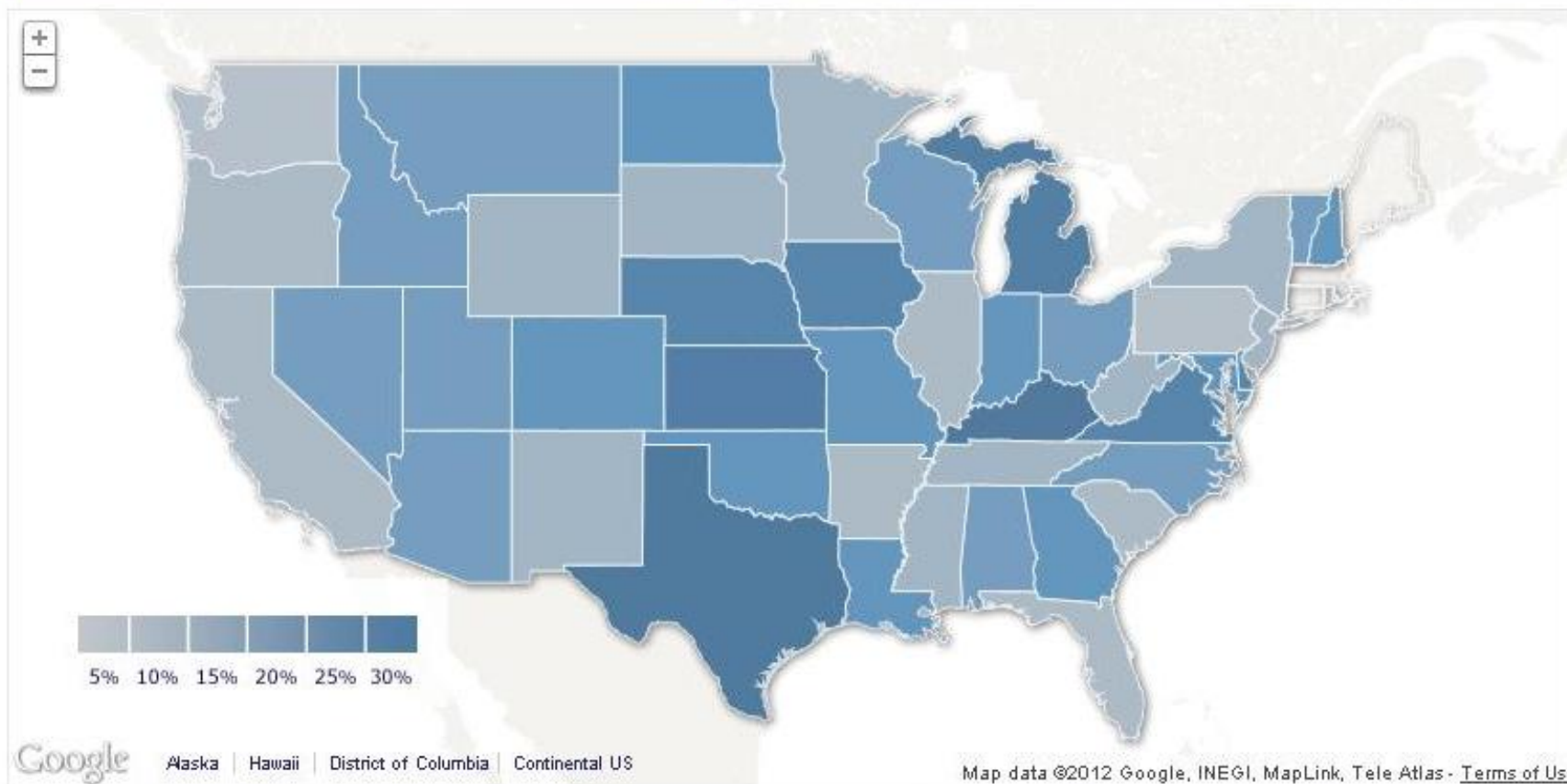
PSYCHOTROPIC MEDICATION USE AMONG CHILDREN IN FOSTER CARE IN THE UNITED STATES

PREVALENCE OF ANTIPSYCHOTIC USE

Select a year to highlight data

2002 2003 2004 2005 2006 2007

2003



Rubin D, Matone M, Huang Y-S, dosReis S, Feudtner C, Localio R. (2012). Interstate variation in trends of psychotropic medication use among Medicaid-enrolled children in foster care. *Children and Youth Services Review*, 34(8): 1492-1499.

Increasing antipsychotic use in foster care

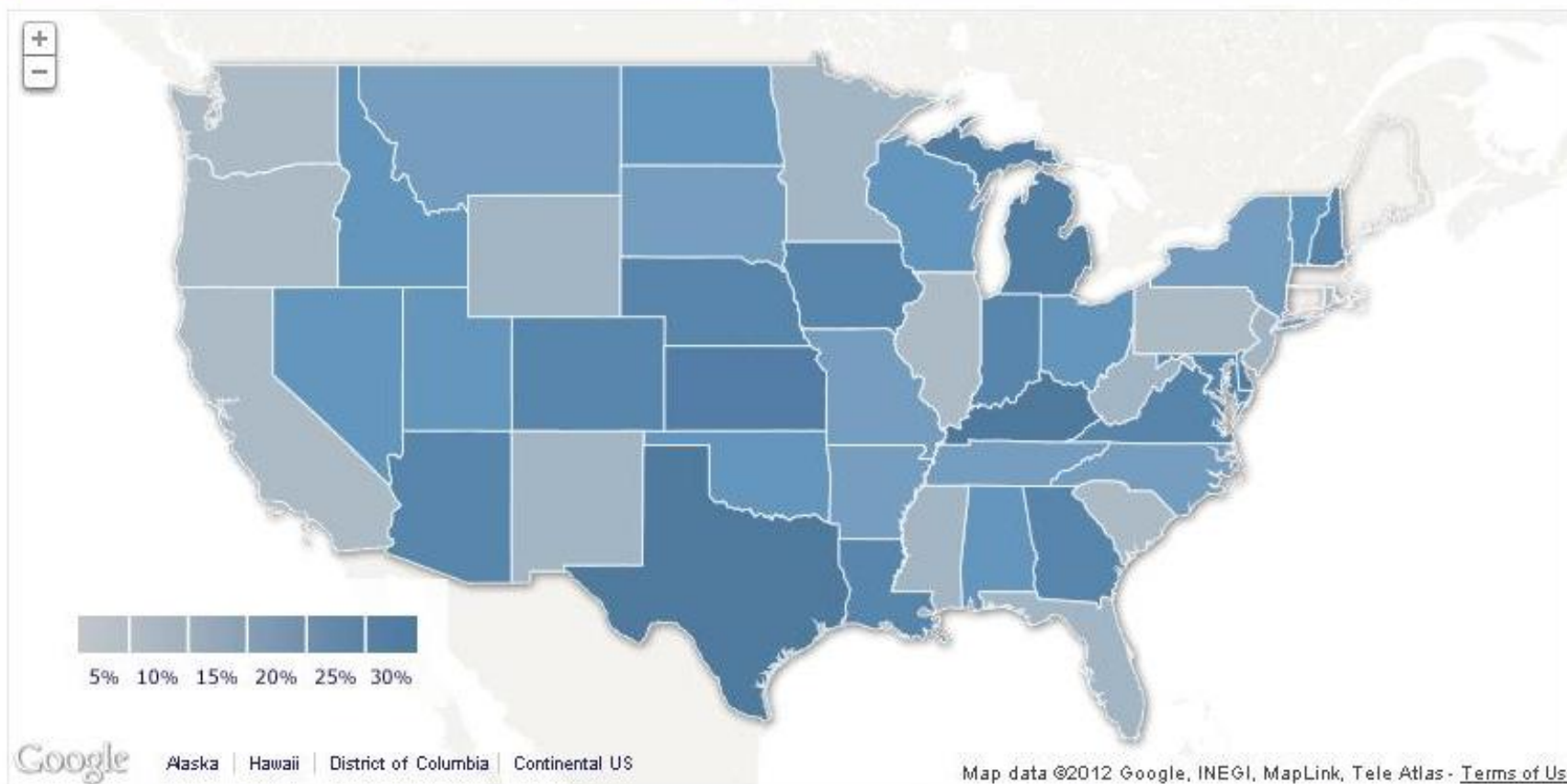
PSYCHOTROPIC MEDICATION USE AMONG CHILDREN IN FOSTER CARE IN THE UNITED STATES

PREVALENCE OF ANTIPSYCHOTIC USE

Select a year to highlight data

2002 2003 2004 2005 2006 2007

2004



Rubin D, Matone M, Huang Y-S, dosReis S, Feudtner C, Localio R. (2012). Interstate variation in trends of psychotropic medication use among Medicaid-enrolled children in foster care. *Children and Youth Services Review*, 34(8): 1492-1499.

Increasing antipsychotic use in foster care

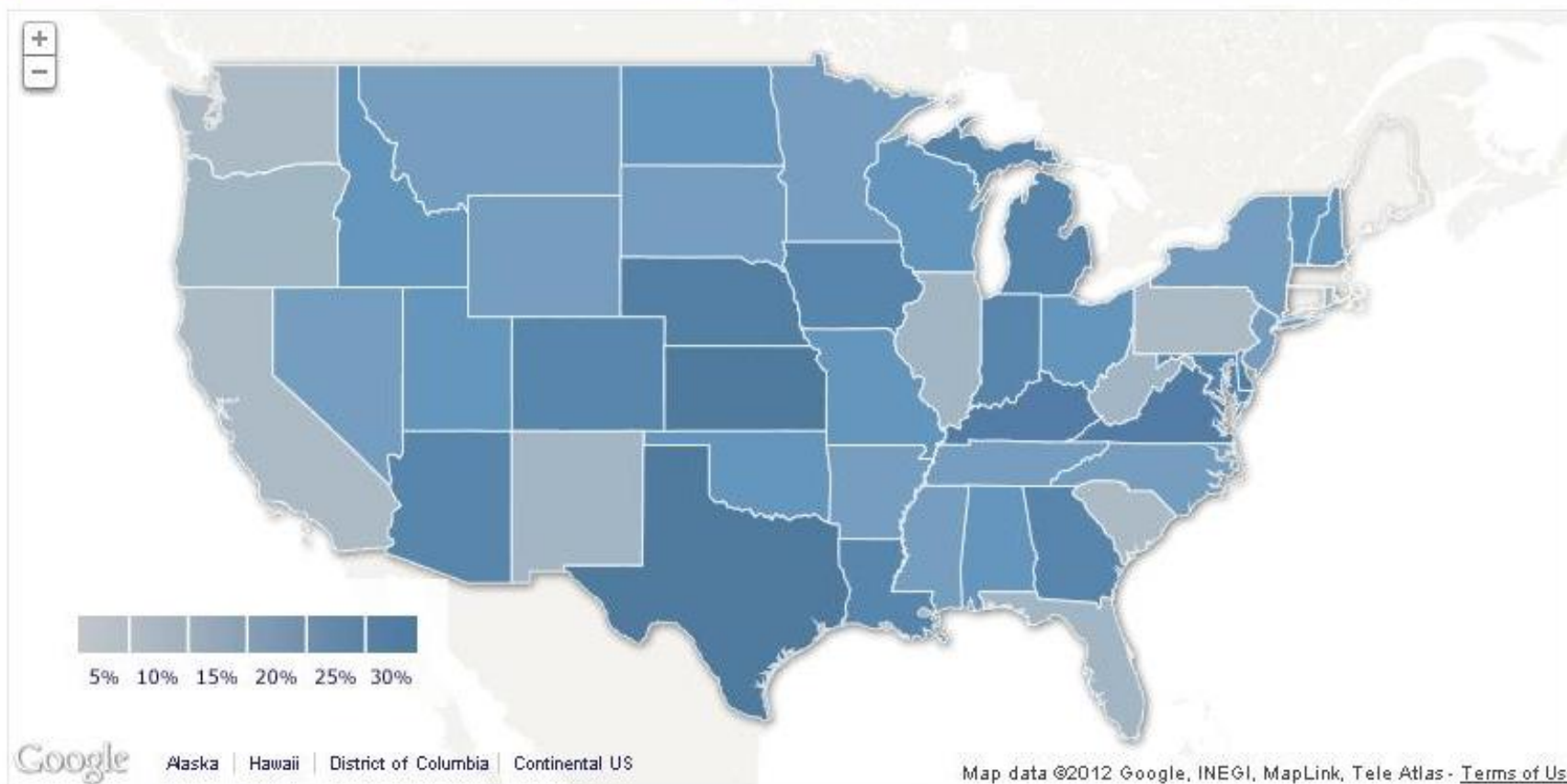
PSYCHOTROPIC MEDICATION USE AMONG CHILDREN IN FOSTER CARE IN THE UNITED STATES

PREVALENCE OF ANTIPSYCHOTIC USE

Select a year to highlight data

2002 2003 2004 2005 2006 2007

2005



Rubin D, Matone M, Huang Y-S, dosReis S, Feudtner C, Localio R. (2012). Interstate variation in trends of psychotropic medication use among Medicaid-enrolled children in foster care. *Children and Youth Services Review*, 34(8): 1492-1499.

Increasing antipsychotic use in foster care

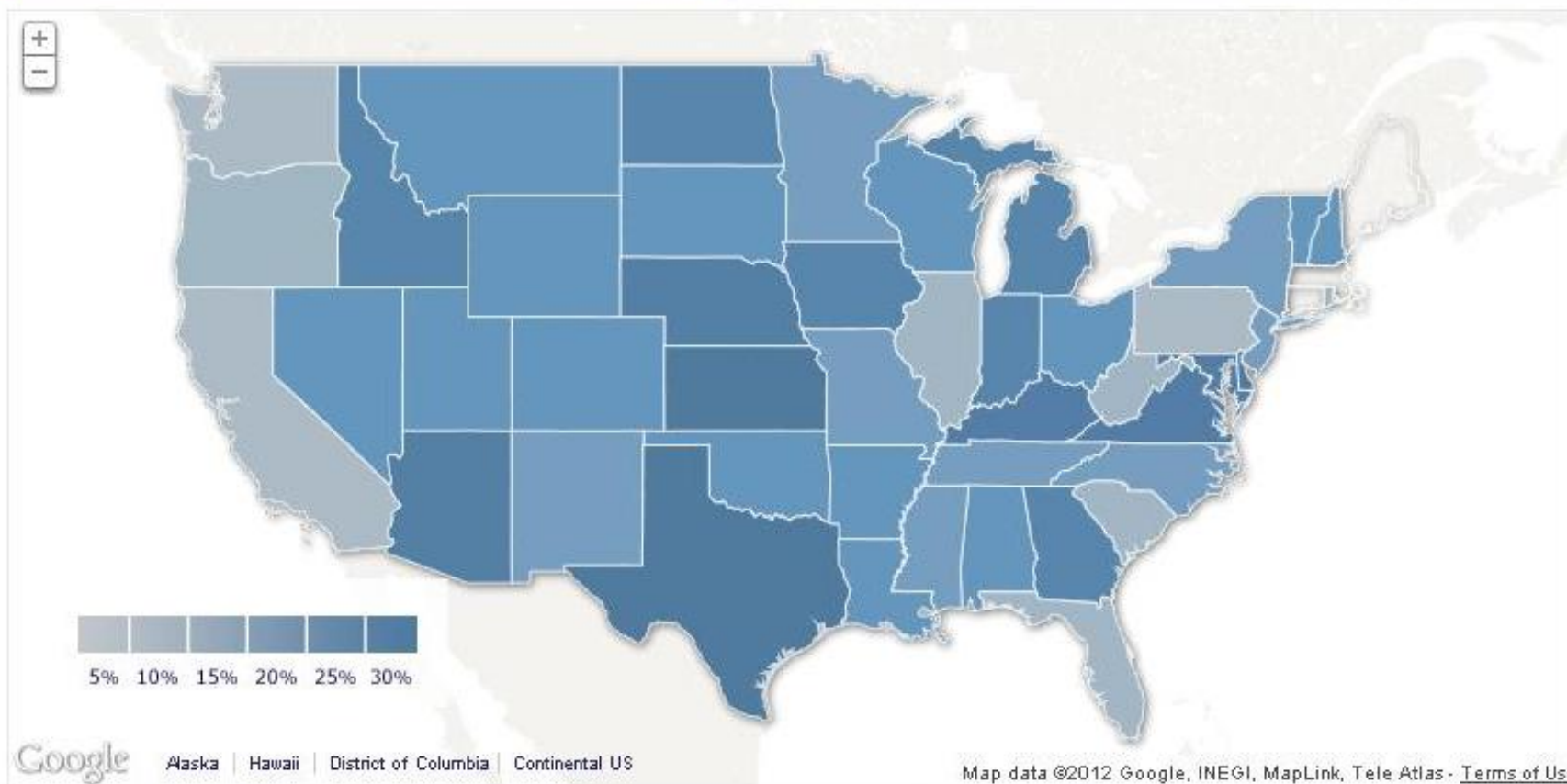
PSYCHOTROPIC MEDICATION USE AMONG CHILDREN IN FOSTER CARE IN THE UNITED STATES

PREVALENCE OF ANTIPSYCHOTIC USE

Select a year to highlight data

2002 2003 2004 2005 2006 2007

2006



Rubin D, Matone M, Huang Y-S, dosReis S, Feudtner C, Localio R. (2012). Interstate variation in trends of psychotropic medication use among Medicaid-enrolled children in foster care. *Children and Youth Services Review*, 34(8): 1492-1499.

Increasing antipsychotic use in foster care

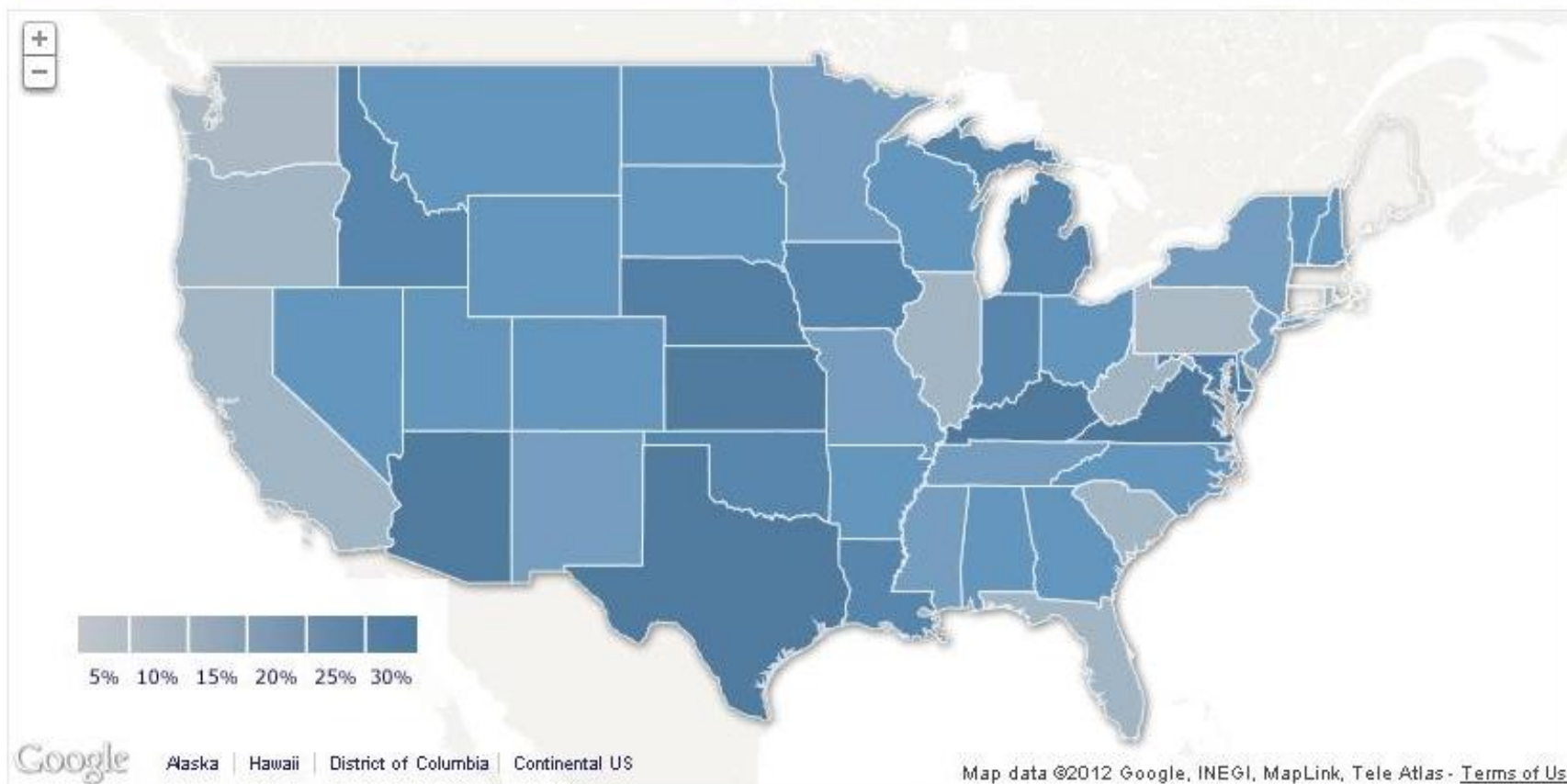
PSYCHOTROPIC MEDICATION USE AMONG CHILDREN IN FOSTER CARE IN THE UNITED STATES

PREVALENCE OF ANTIPSYCHOTIC USE

Select a year to highlight data

2002 2003 2004 2005 2006 2007

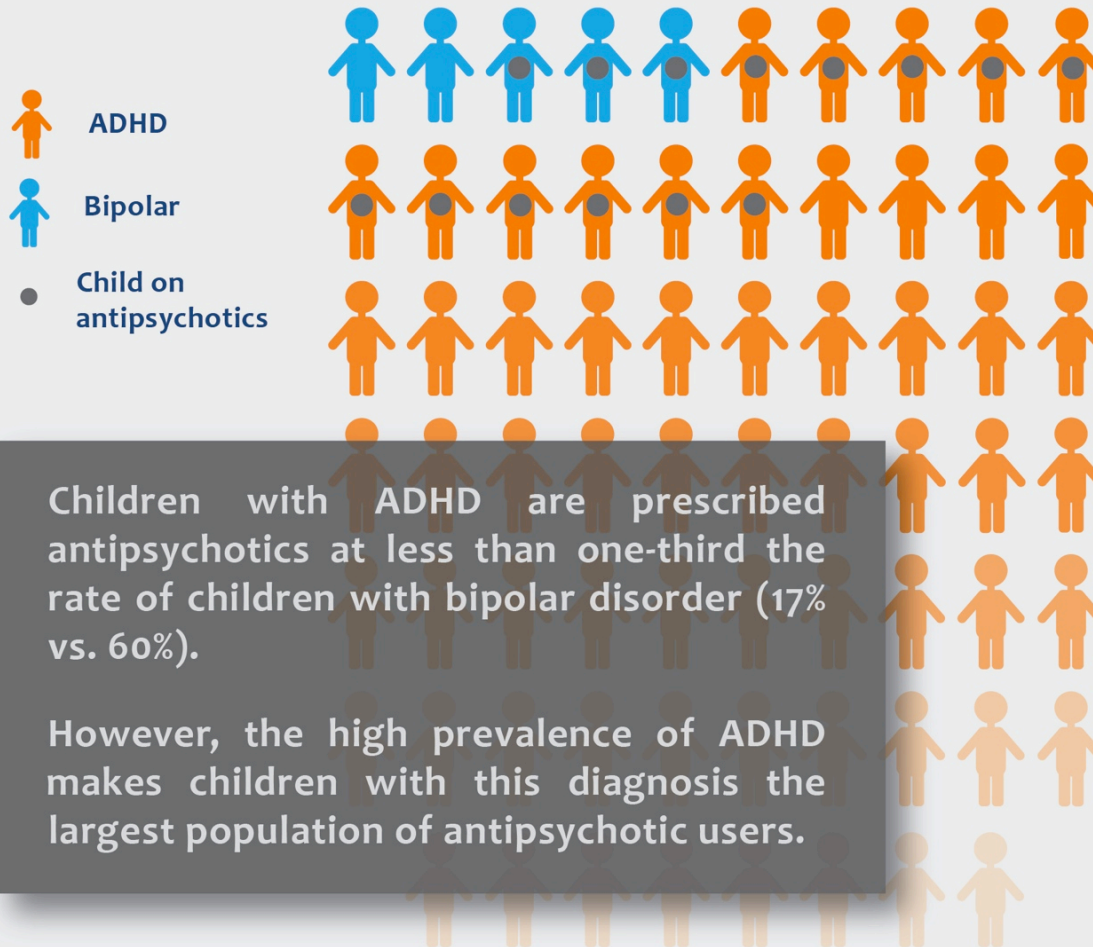
2007



Rubin D, Matone M, Huang Y-S, dosReis S, Feudtner C, Localio R. (2012). Interstate variation in trends of psychotropic medication use among Medicaid-enrolled children in foster care. *Children and Youth Services Review*, 34(8): 1492-1499.

THE POPULATION PERSPECTIVE:

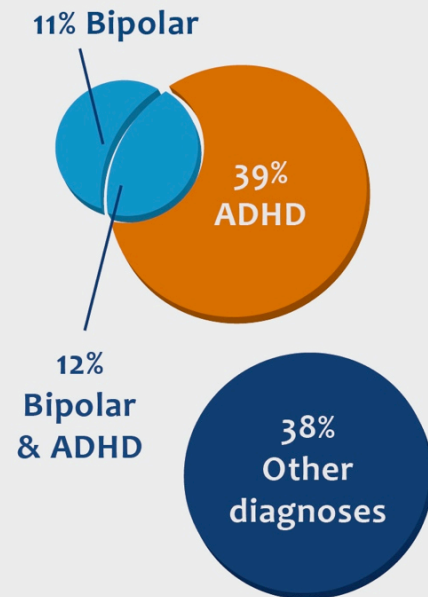
Frequently diagnosed conditions without clinical indication for antipsychotics account for the majority of children's antipsychotic use.



Children with ADHD are prescribed antipsychotics at less than one-third the rate of children with bipolar disorder (17% vs. 60%).

However, the high prevalence of ADHD makes children with this diagnosis the largest population of antipsychotic users.

WHO'S TAKING ANTIPSYCHOTICS?



What can we do?



Strengthening psychotropic medication oversight

- To develop oversight parameters and guidance in accordance with *2011 Child and Families Services Improvement and Innovation Act*
- Who are the people to act on the data?
 - ACYF and HHS psychotropic medication working group
 - State child welfare, Medicaid, and mental health
 - Pennsylvania

Increasing access to evidence-based non pharmacological behavioral therapy

- Need to ensure timely access
- Need to be sustained by ongoing training, sufficient reimbursement, public system scale up
- PolicyLab Example:
 - Implementation and evaluation of an evidence-based behavioral health intervention in the City of Philadelphia
 - Using Parent Child Interaction Therapy



Concluding remarks

- **PolicyLab: EVIDENCE TO ACTION**

- Linking research and policy
- Ensuring the accessibility of the data
- Building partnerships with local, state and federal decision makers
- Strengthening public systems on the ground



PolicyLab

The Children's Hospital of Philadelphia

3535 Market Street, 15th Floor

Philadelphia, PA 19104

267.426.5300

policylab@email.chop.edu

<http://research.chop.edu/policylab>



PolicyLab

CENTER TO BRIDGE RESEARCH,
PRACTICE & POLICY



The Children's Hospital *of* Philadelphia®

Trends in antipsychotic use across time

