

GRATE DETAILS TYPE C
SCALE: 1.5" = 1'-0"

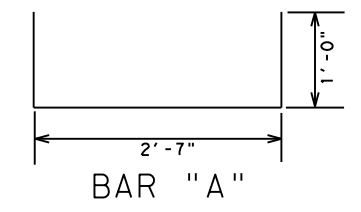
GRATE MOUNTING DETAILS
SCALE: 1.5" = 1'-0"

MULTIPLE GRATE INLET DETAILS
SCALE: 1/2" = 1'-0"

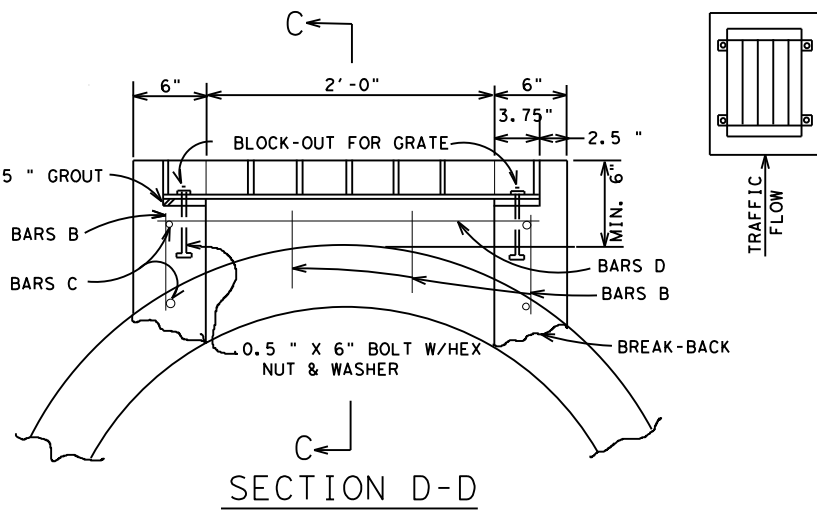
INLET DETAILS TYPE "C"
SCALE: 1.5" = 1'-0"

PIPE SIZE	CONC. C.Y.
15"	0.04
18"	0.05
21"	0.07
24"	0.09
27"	0.11
30"	0.14
33"	0.17
36"	0.20
39"	0.23
42"	0.26
48"	0.34

CONCRETE TO BE DEDUCTED FOR PIPES



TWO GRATES
BAR "A"



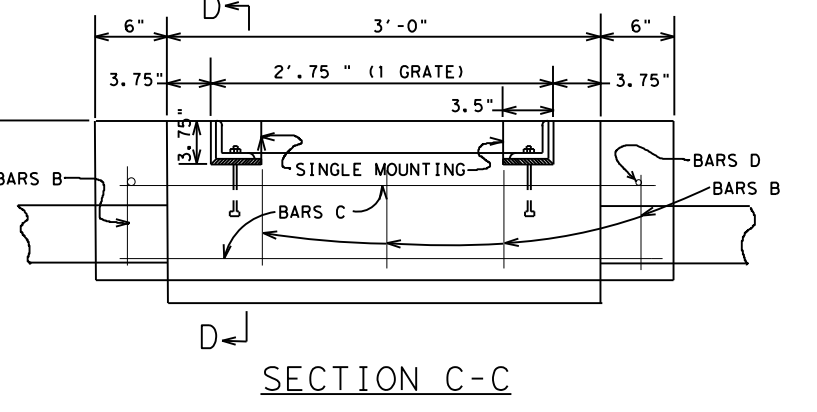
SECTION D-D

- ### GENERAL NOTES
1. EXPOSED EDGES SHALL BE CHAMFERED 0.75".
 2. ALL CONCRETE SHALL BE CLASS "A".
 3. ALL DIMENSIONS TO BE REINFORCING STEEL ARE TO CENTERS OF BARS.
 4. IN AREAS OF CONFLICT BETWEEN REINFORCING STEEL, BLOCKOUTS, PIPES, ANCHOR BOLTS OR OTHER REINFORCING STEEL, THE REINFORCEMENT SHALL BE BENT OR ADJUSTED TO CLEAR AS DIRECTED BY THE ENGINEER.
 5. IF POSSIBLE HORIZONTAL GRATE INLET SHOULD BE ORIENTED SUCH THAT BOTH TRAFFIC AND DITCH WATER APPROACH PARRALLEL TO BARS ON GRATE. IF THIS IS NOT POSSIBLE ORIENTATION SHOULD FAVOR TRAFFIC FLOW WHERE PIPE SIZES PERMIT.
 6. STRUCTURAL STEEL FOR GRATES SHALL CONFORM TO THE REQUIREMENTS OF ASTM DESIGNATION A-36 OR AISI DESIGNATION m1010-m1020. PAYMENT FOR GRATES SHALL BE MADE UNDER THE BID ITEM "GRATE (TY C)." QUANTITIES FOR CONCRETE & STEEL ARE FOR CONTRACTOR'S INFORMATION ONLY.
 7. PAYMENT FOR INLETS SHALL BE MADE UNDER THE BID ITEM "INLETS (COMP) (TY C-1 GRATE), (TY C-2 GRATE), (TY C-3 GRATE) OR (TY G-1 GRATE)."
 8. EXISTING BARS EXPOSED BY BREAK -BACK SHALL BE CLEANED AND BENT INTO POSITION TO PROVIDE A TIE TO THE NEW CONCRETE EXTENSION FOR TYPE "G" INLET.

BILL OF REINFORCING STEEL FOR TYPE "C" INLETS

	H	BARS A 12" C.C.				BARS B 12" C.C.				BARS C 12" C.C.				BARS D 12" C.C.				REINF. STEEL LB.	CL. "A" CONC. C.Y.	GRATE
		NO.	LENGTH	SIZE	WT.	NO.	LENGTH	SIZE	WT.	NO.	LENGTH	SIZE	WT.	NO.	LENGTH	SIZE	WT.			
1 GRATE	2'-6"	5	4'-7"	4	15	14	2'-8"	4	25	10	3'-8"	4	24	6	2'-8"	4	11	75	0.85	95#
	3'-0"	5	4'-7"	4	15	14	3'-2"	4	30	10	3'-8"	4	24	6	2'-8"	4	11	80	0.96	
	3'-6"	5	4'-7"	4	15	14	3'-8"	4	34	12	3'-8"	4	29	8	2'-8"	4	14	92	1.07	
	4'-0"	5	4'-7"	4	15	14	4'-2"	4	39	12	3'-8"	4	29	8	2'-8"	4	14	97	1.18	
	4'-6"	5	4'-7"	4	15	14	4'-8"	4	44	14	3'-8"	4	34	10	2'-8"	4	18	111	1.29	
2-GRATE	3'-0"	7	4'-7"	4	21	18	3'-2"	4	38	10	6'-0"	4	40	6	2'-8"	4	11	110	1.38	190#
	3'-6"	7	4'-7"	4	21	18	3'-8"	4	44	12	6'-0"	4	48	8	2'-8"	4	14	127	1.53	
	4'-0"	7	4'-7"	4	21	18	4'-2"	4	50	12	6'-0"	4	48	8	2'-8"	4	14	133	1.68	
	4'-6"	7	4'-7"	4	21	18	4'-8"	4	56	14	6'-0"	4	56	10	2'-8"	4	18	151	1.83	
	5'-0"	7	4'-7"	4	21	18	5'-2"	4	62	14	6'-0"	4	56	10	2'-8"	4	18	157	1.98	
3-GRATE	5'-6"	7	4'-7"	4	21	18	5'-8"	4	68	16	6'-0"	4	64	12	2'-8"	4	21	174	2.13	285#
	4'-0"	10	4'-7"	4	31	24	4'-2"	4	67	12	8'-4"	4	67	8	2'-8"	4	14	178	2.22	
	4'-6"	10	4'-7"	4	31	24	4'-8"	4	75	14	8'-4"	4	78	10	2'-8"	4	18	202	2.41	
	5'-0"	10	4'-7"	4	31	24	5'-2"	4	83	14	8'-4"	4	78	10	2'-8"	4	18	210	2.60	
	5'-6"	10	4'-7"	4	31	24	5'-8"	4	91	16	8'-4"	4	89	12	2'-8"	4	21	232	2.79	
	6'-0"	10	4'-7"	4	31	24	6'-2"	4	99	16	8'-4"	4	89	12	2'-8"	4	21	240	2.98	
6'-6"	10	4'-7"	4	31	24	6'-8"	4	107	16	8'-4"	4	100	14	2'-8"	4	25	263	3.17		

* DOES NOT INCLUDE QUANTITY FOR SHAPING OR DEDUCTION FOR PIPES



SECTION C-C

INLET DETAILS TYPE "G"
FOR USE WITH PIPES GREATER THAN 30" DIAMETER

DROP INLET TYPE C & G DETAILS
TXDOT DALLAS DISTRICT STANDARD

FED. RD. DIV. NO.	FEDERAL AID PROJECT NO.	SHEET NO.
6		
STATE	STATE DIST. NO.	COUNTY
TEXAS	18	
CONTROL	SECTION	JOB HIGHWAY NO.