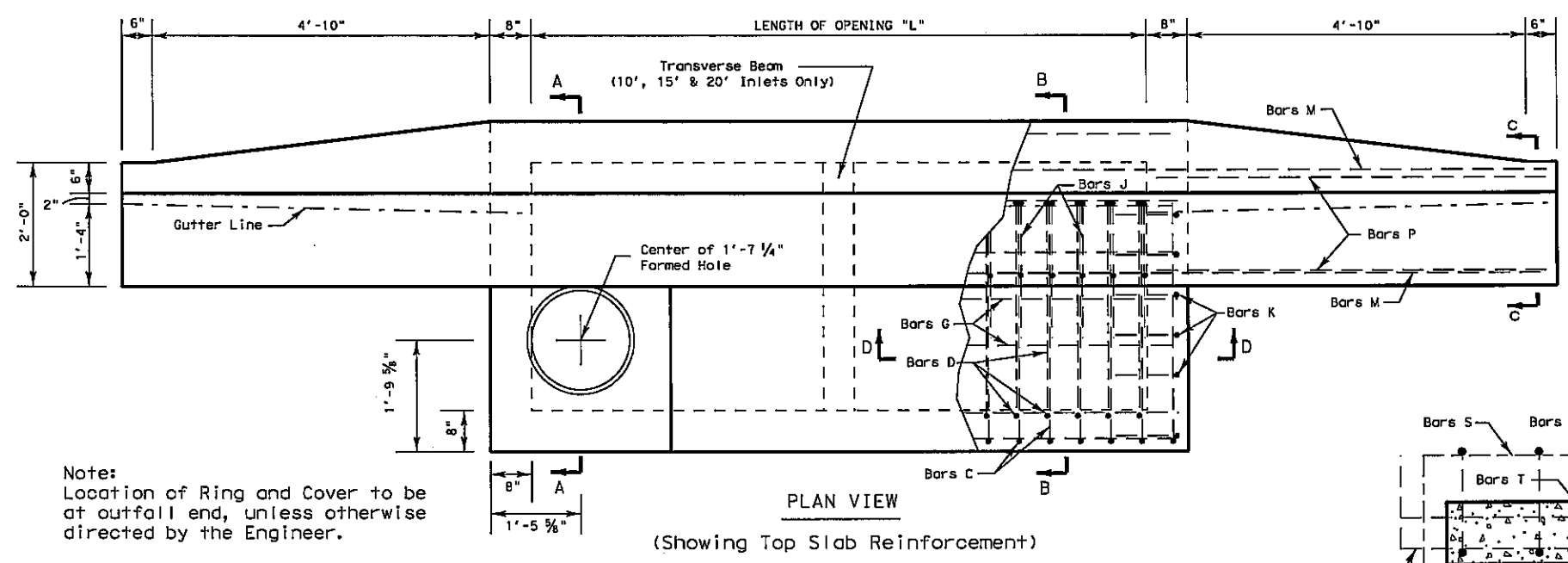
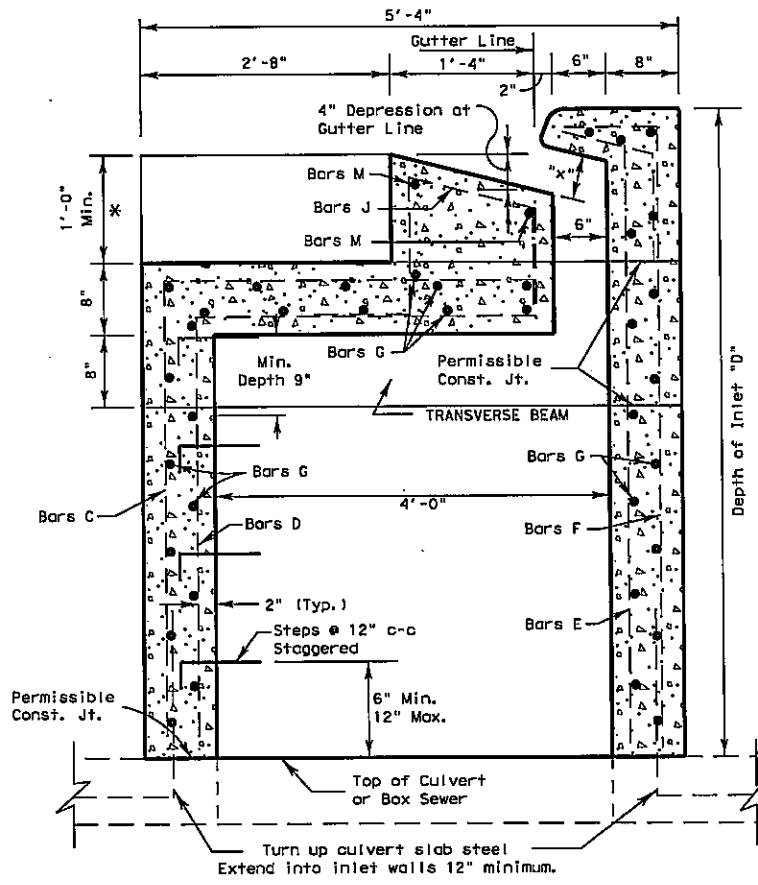
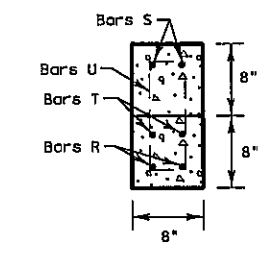


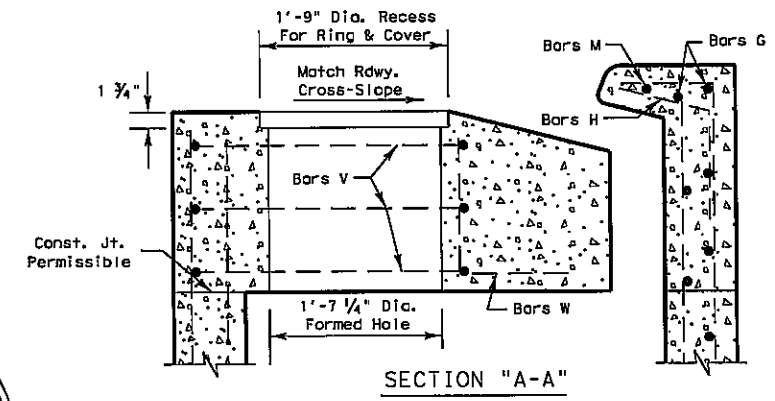
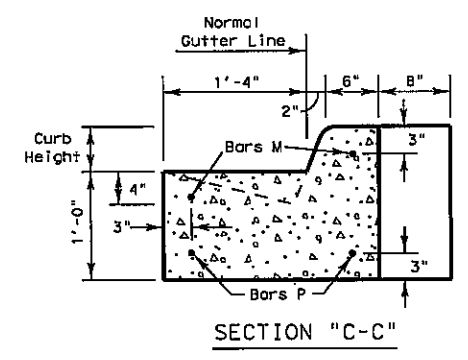
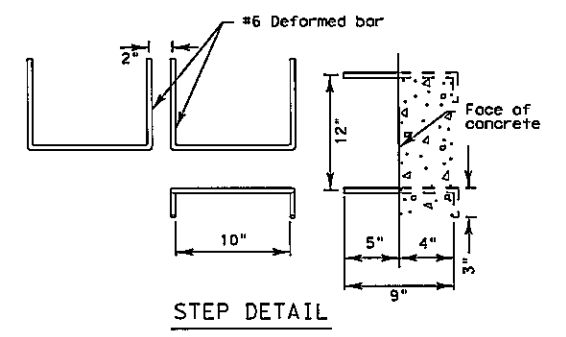
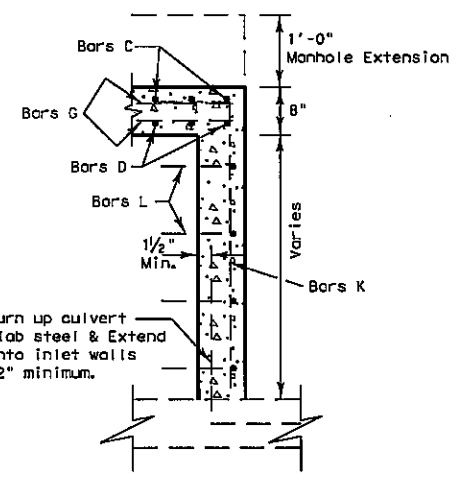
DISCLAIMER: Use of this standard is governed by the "Texas Engineering Practice Act". No warranty of any kind is made by TxDOT for any purpose whatsoever. TxDOT assumes no responsibility for the conversion of this standard to other formats or for incorrect results or damages resulting from its use.



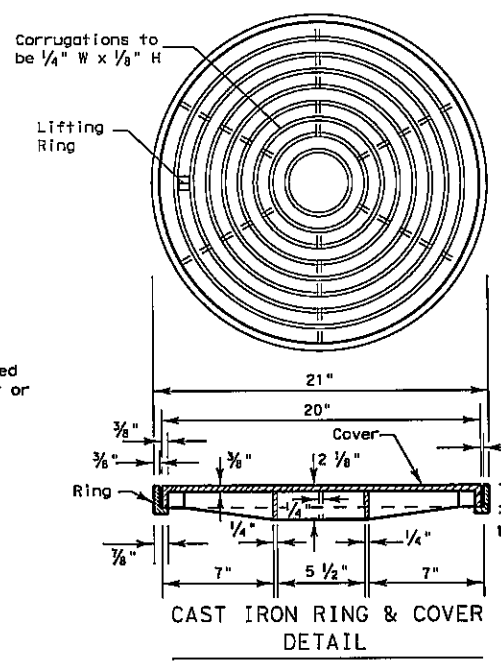
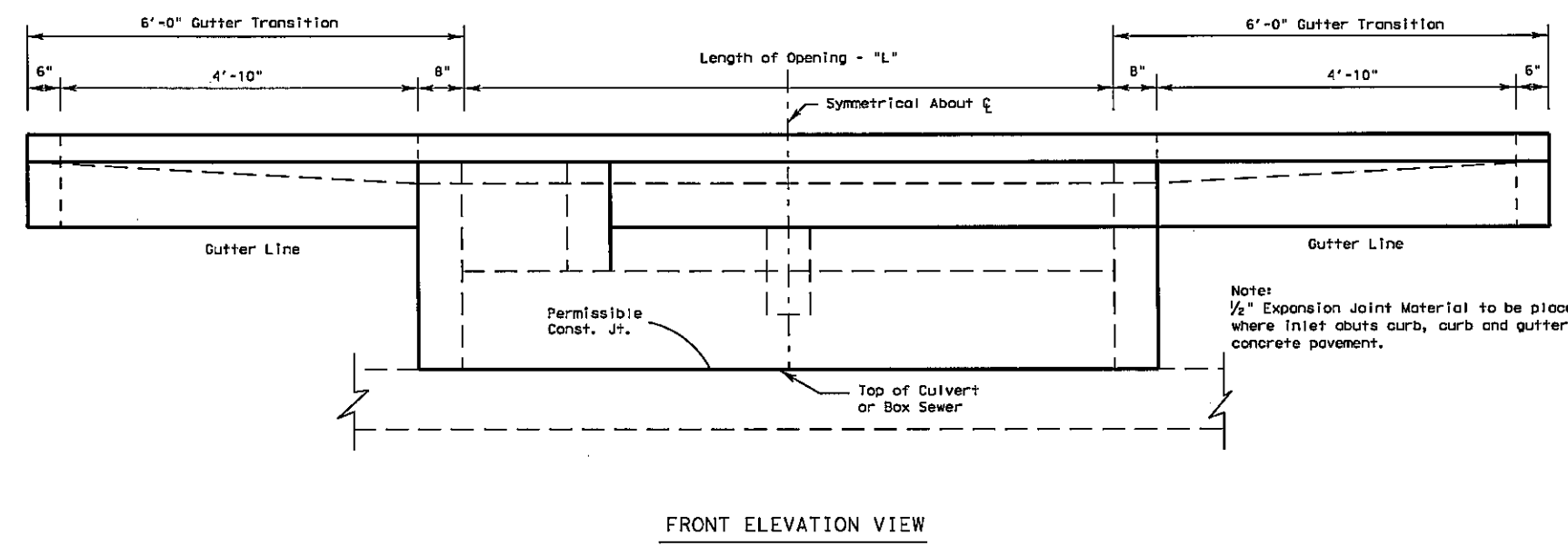
THROAT DIMENSION	
CURB HEIGHT	"X"
5"	5"
6"	5 1/8"
7"	6 1/4"
8"	6 1/2"



* Match depth of pavement structure (Base and Surface). Adjust bar lengths as directed by the Engineer.



Note: See Sheet 2 of 2 for Details of Reinforcing Steel, Estimated Quantities, and General Notes.



REVISED ON 9/10/08

© 2004 by Texas Department of Transportation; all rights reserved

1	2	3	4	5	6	7	8	9	10

Texas Department of Transportation
DALLAS DISTRICT

TYPE 2-C
CURB INLET ON BOX CULVERT
FOR USE W/ 5" TO 8" BARRIER CURB
5', 10', 15' & 20' OPENINGS

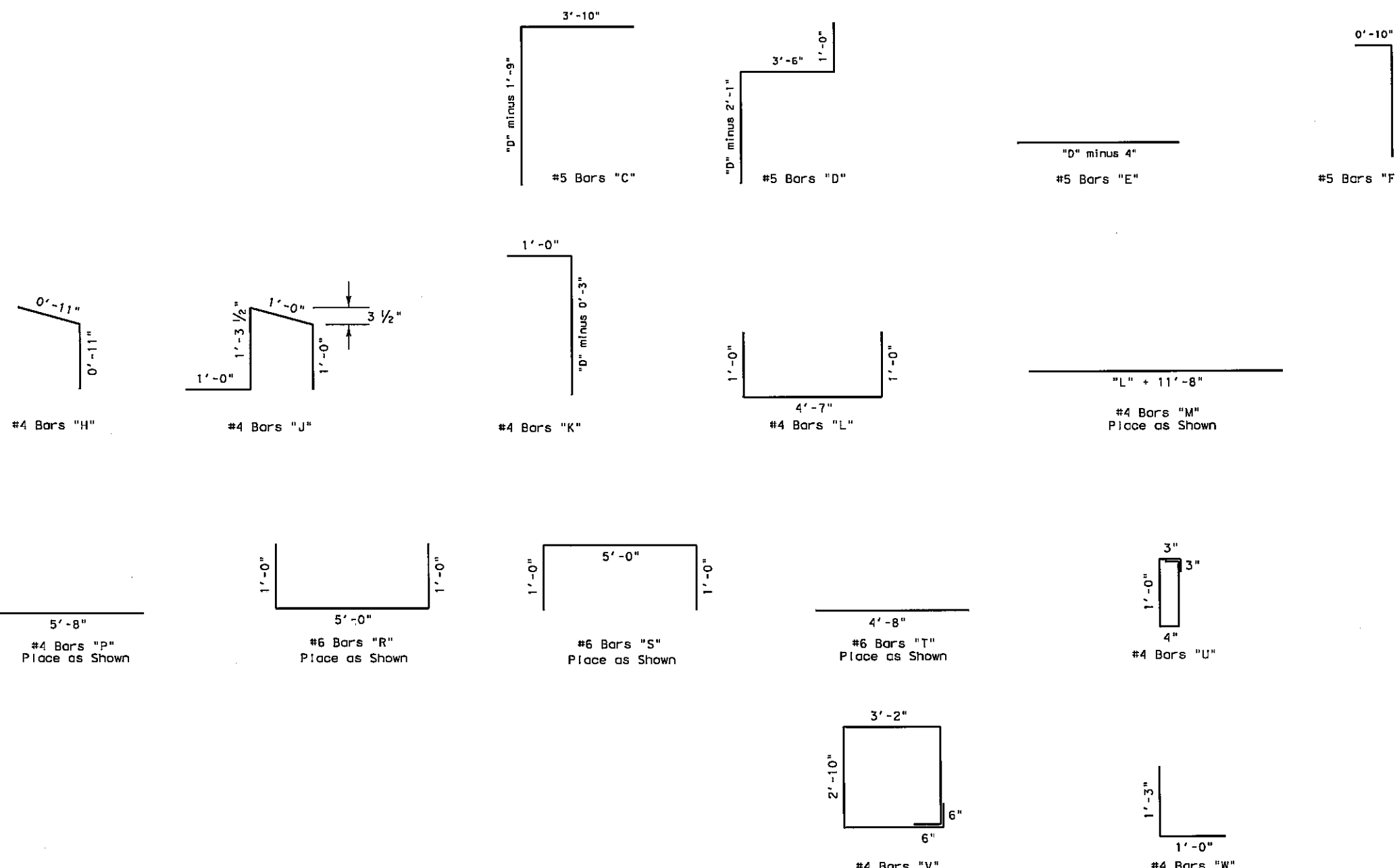
CI (2) -02-BC (DAL)
SHEET 1 OF 2 SHEETS

FED. RD. DIV. NO.	PROJECT NO.	SHEET NO.
6		
STATE	DIST.	COUNTY
TEXAS	DAL	
CONT.	SECT.	JOB HIGHWAY NO.

Bill Of Reinforcing Steel for Inlet Depth of 6'

Length of Opening	#5 Bars C @ 6"		#5 Bars D @ 6"		#5 Bars E @ 6"		#5 Bars F @ 6"		#4 Bars G			#4 Bars H @ 12"		#4 Bars J @ 12"		#4 Bars K @ 8"		#4 Bars L @ 12"		#4 Bars M			#4 Bars P		#6 Bars R		#6 Bars S		#6 Bars T		#4 Bars U @ 10"		#4 Bars V @ 5"		#4 Bars W	
	No.	Wt.	No.	Wt.	No.	Wt.	No.	Wt.	No.	Length	Wt.	No.	Wt.	No.	Wt.	No.	Wt.	No.	Wt.	No.	Length	Wt.	No.	Wt.	No.	Wt.	No.	Wt.	No.	Wt.	No.	Wt.	No.	Wt.		
5'	12	109.56	12	105.34	12	70.92	12	81.35	13	6.83	59.34	6	7.35	6	17.2	14	62.35	4	17.59	3	16'8"	33.4	2	7.57	2	21.03	2	21.03	2	15.02	4	8.46	3	24.72	6	9.02
10'	22	200.86	22	193.13	22	130.03	22	149.15	13	11.83	102.73	11	13.47	11	31.54	14	62.35	4	17.59	3	21'8"	43.42	2	7.57	2	21.03	2	21.03	2	15.02	4	8.46	3	24.72	6	9.02
15'	32	292.16	32	280.91	32	189.13	32	216.94	13	16.83	146.15	16	19.59	16	45.87	14	62.35	4	17.59	3	26'8"	53.44	2	7.57	2	21.03	2	21.03	2	15.02	4	8.46	3	24.72	6	9.02
20'	42	383.46	42	368.7	42	248.23	42	284.74	13	21.83	189.57	21	25.72	21	60.2	14	62.35	4	17.59	3	31'8"	63.46	2	7.57	2	21.03	2	21.03	2	15.02	4	8.46	3	24.72	6	9.02

DISCLAIMER: The use of this standard is governed by the "Texas Engineering Practice Act". No warranty of any kind is made by TxDOT for any purpose whatsoever. TxDOT assumes no responsibility for the conversion of this standard to other formats or for incorrect results or damages resulting from its use.



"L" + 1'-10"
#4 Bars "G"

Bar Spacing: Bottom Slab, Lower Mat - 1'-6"
Bottom Slab, Upper Mat - 1'-3"
Back Wall, Outer Mat - 0'-9"
Back Wall, Inner Mat - 0'-10"
Front Wall, Outer Mat - 0'-9"
Front Wall, Inner Mat - 0'-10"
Upper Slab, Lower Mat - 0'-8"
Upper Slab, Upper Mat - 0'-9"
Gutter - Place as Shown

GENERAL NOTES

1. All concrete shall be Class "A".
2. Chamfer all exposed corners 3/4" except where otherwise noted.
3. Dimensions related to reinforcing steel are to the centers of bars.
4. Field cut and bend bars as necessary to accommodate storm drain pipe.
5. Cast iron ring and cover shall conform to Item 471.
6. Depths other than those shown may be used whenever necessary. Quantities for other depths within the limits of the tables may be found by interpolation.
7. During Stage 1 construction, inlets will not be constructed above subgrade elevation unless permission is granted.
8. A temporary wood cover shall be installed after Stage 1 is completed, and will remain in place until Stage 2 begins.
9. The location of inlet as shown in the plans refers to the control point at the face of curb and mid-point of the inlet.
10. Place bond breaker between inlet deck and concrete pavement. Place a sealed 1/2" expansion joint along all vertical faces abutting concrete pavement. Seal joint with Class 3,4,5 or 7 joint sealant.

Summary of Quantities

	C.Y. Class "A" Concrete		Lbs. Reinforcing Steel	
	"L" (F+)	"D" = 6'	"D" = 6'	Add P.L.F.
5'	4.2	76.56	671	6.27
10'	6.8	113.59	1051	8.83
15'	11.54	160.00	1431	11.09
20'	14.78	185.25	1811	13.02

LEVELS DISPLAYED	9
TOTAL SHEETS	9

Texas Department of Transportation
DALLAS DISTRICT

TYPE 2-C
CURB INLET ON BOX CULVERT
FOR USE W/ 5" TO 8" BARRIER CURB
5', 10', 15' & 20' OPENINGS

CI (2) -02-BC (DAL)
SHEET 2 OF 2 SHEETS

FED. RD. DIV. NO.	PROJECT NO.	SHEET NO.
6		
STATE	DIST.	COUNTY
TEXAS	DAL	
CONT.	SECT.	JOB
		HIGHWAY NO.