



## Coffee Break Training - Emergency Medical Services

### Medical Components of the Incident Command System: Patient Transportation Unit Leader or Group Supervisor

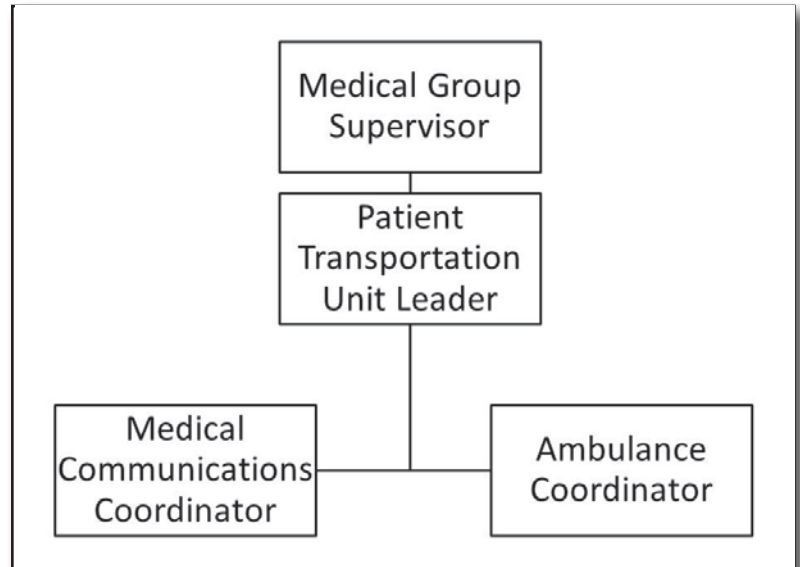
No. EMS-2015-5 April 8, 2015

**Learning Objective:** The student will understand the Patient Transportation Unit Leader's responsibilities.

**P**atient Transportation Unit Leader: The Patient Transportation Unit Leader reports to the Medical Group Supervisor and supervises the Medical Communications Coordinator and the Ambulance Coordinator. The Patient Transportation Unit Leader is responsible for the coordination of patient transportation and maintenance of records relating to the patient's identification, condition and destination. The Patient Transportation function may be initially established as a Unit and upgraded to a Group based on incident size or complexity:

- Review Common Responsibilities.
- Ensure the establishment of communications with hospital(s).
- Designate Ambulance Staging Area(s).
- Direct the off-incident transportation of patients as determined by the Medical Communications Coordinator.
- Ensure that patient information and destination are recorded.
- Establish communications with Ambulance Coordinator.
- Request additional ambulances as required.
- Notify Ambulance Coordinator of ambulance requests.
- Coordinate requests for air ambulance transportation through the Air Operations Branch Director.

For additional information regarding the Patient Transportation Unit Leader's responsibilities, the U.S. Fire Administration/National Fire Academy Field Operations Guide can be accessed at <http://feti.lsu.edu/municipal/NFA/TRADE/materials/TRADE%20CD%20XVI//WebHelp/index.htm>.



For archived downloads, go to:

[http://www.usfa.fema.gov/training/coffee\\_break/](http://www.usfa.fema.gov/training/coffee_break/)