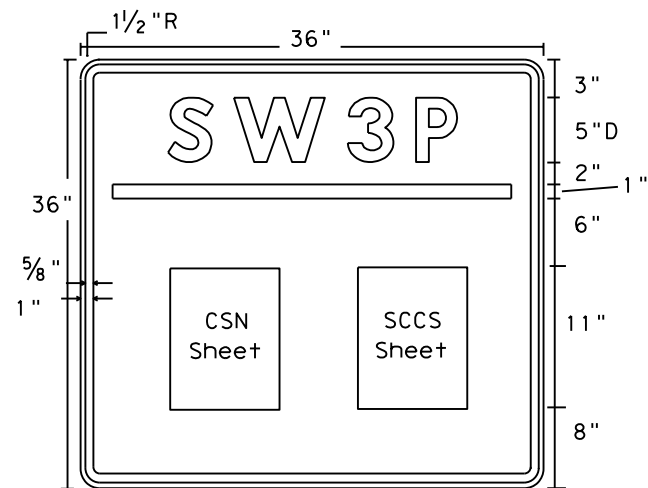


DISCLAIMER: The use of this standard is governed by the "Texas Engineering Practice Act". No warranty of any kind is made by TxDOT for any purpose whatsoever. TxDOT assumes no responsibility for the conversion of this standard to other formats or for incorrect results or damages resulting from its use.

LEVELS DISPLAYED	PATH:
1	



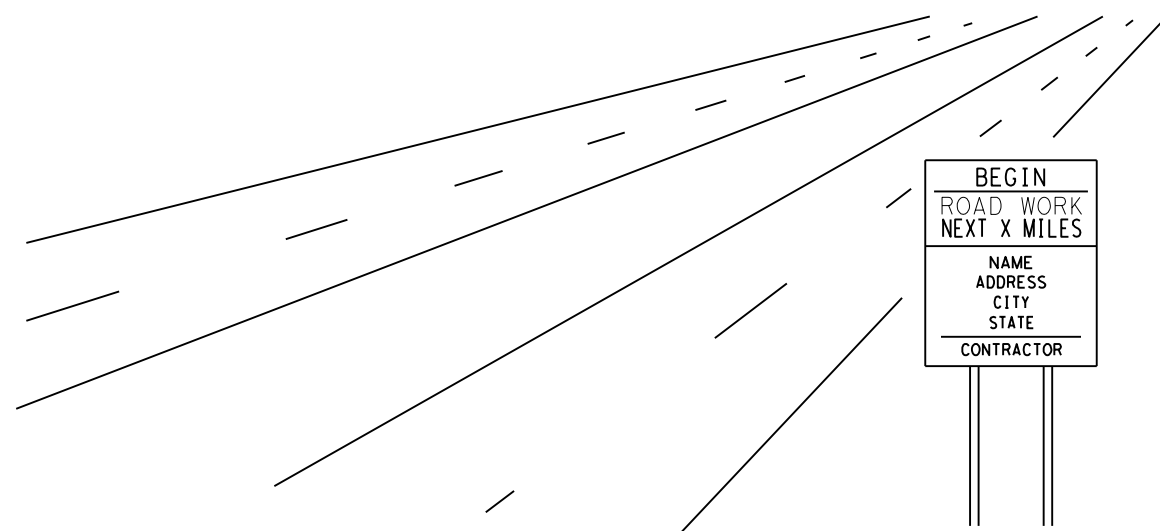
Sign Dimensions

36" X 36"

- Letters - White
- Numbers - White
- Border - White
- Background - Blue

SW3P SIGN

Large or Small Construction Site Notice (CSN) & Signed Contractor Certification Statement (SCCS)



GENERAL NOTES:

1. The alphabets and lateral spacing between letters and numerals shall conform with the "Texas Manual on Uniform Traffic Control Devices for Streets and Highways", (TMUTCD) latest edition, and the "Compliant Work Zone Traffic Control Devices List". Lateral spacing of text shall provide a balanced appearance. All materials shall conform to Department Specifications.
2. Legend and border may be applied by reverse screening process with transparent colored ink, cut-out white reflective sheeting applied to colored background or combination thereof. Background shall be reflective sheeting Type C.
3. CSN & SCCS Sheets will be laminated and attached to the sign with an adhesive. Ensure sheets remain dry. (See Figure 1).
4. Signs should be placed just inside the right of way line at the project limits at a readable height. If the sign cannot be placed outside the clear zone, it must adhere to the TMUTCD. If placed outside the clear zone, SW3P sign may be placed perpendicular or parallel to ROW line.
5. Final location of the signs will be approved by the Engineer.

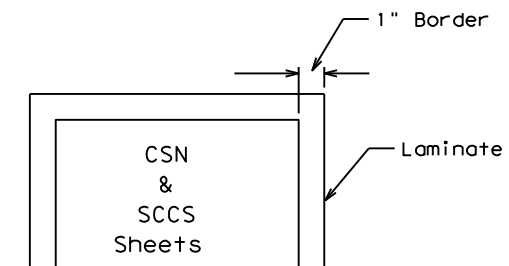


Figure 1

DEPARTMENT MATERIAL SPECIFICATIONS	
PLYWOOD SIGN BLANKS	DMS-7100
FLAT SURFACE REFLECTIVE SHEETING	DMS-8300
VINYL NON-REFLECTIVE DECAL SHEETING	DMS-8320

COLOR	USAGE	REFLECTIVE SHEETING OR OTHER MATERIAL
BLUE	BACKGROUND	TYPE C (FLUORESCENT PRISMATIC)
WHITE	LEGEND & BORDERS	VINYL NON-REFLECTIVE DECAL SHEETING

Texas Department of Transportation
DALLAS DISTRICT STANDARD

SW3P SIGN SHEET

FILE#	DW#	CK#	DW#	CK#
© TxDOT 2013	DISTRICT	FEDERAL AID PROJECT	SHEET	
	18			
REVISION DATE: 4/02/13	COUNTY	CONTROL SECT	JOB	HIGHWAY