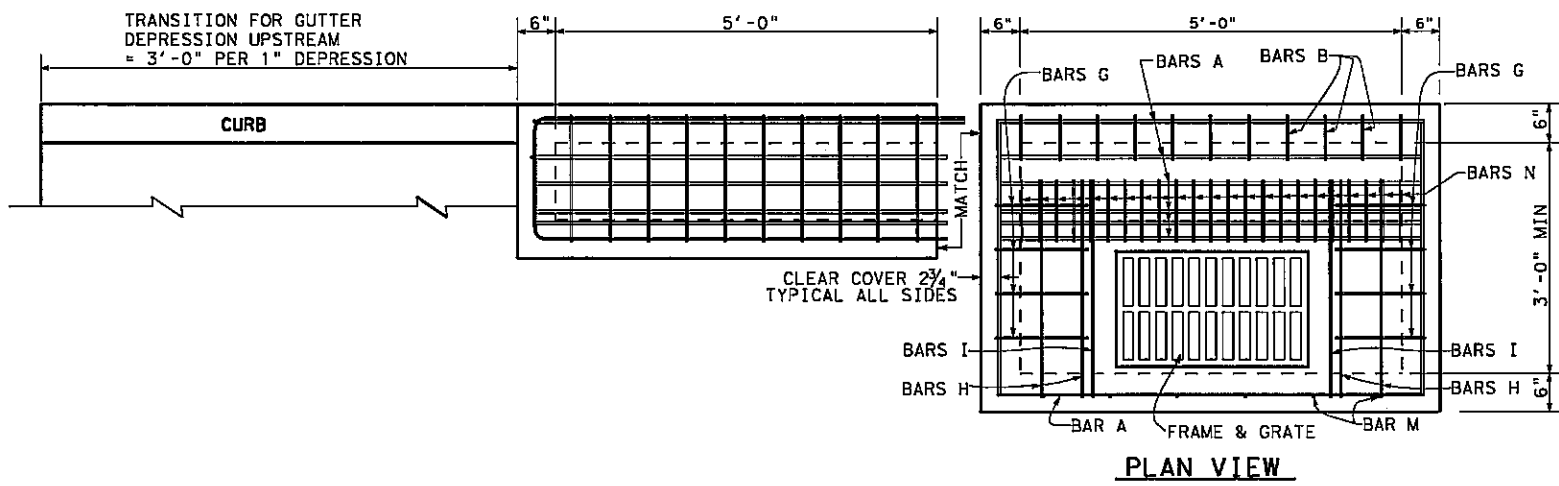
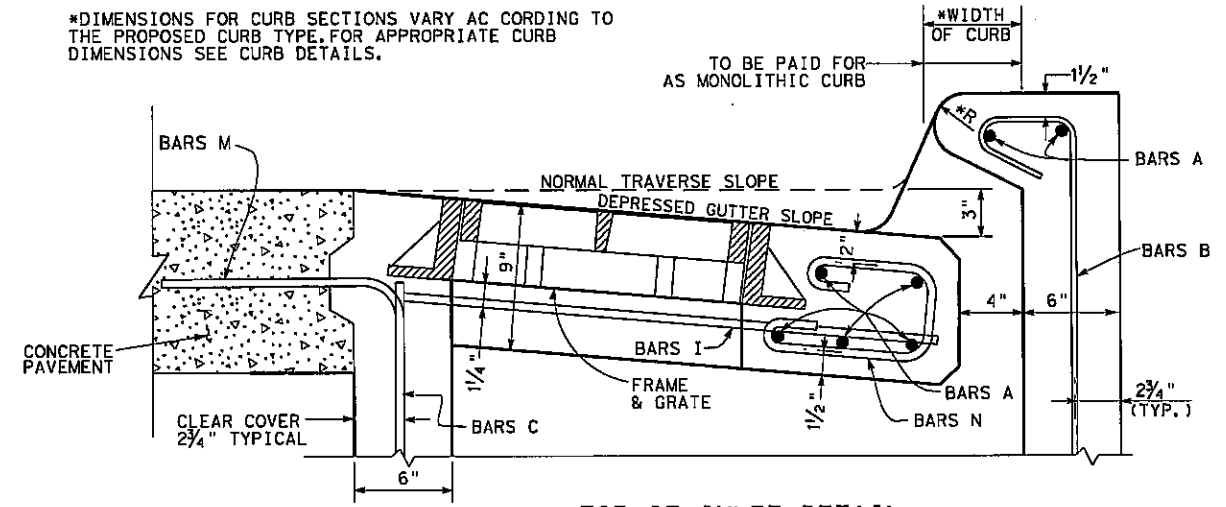
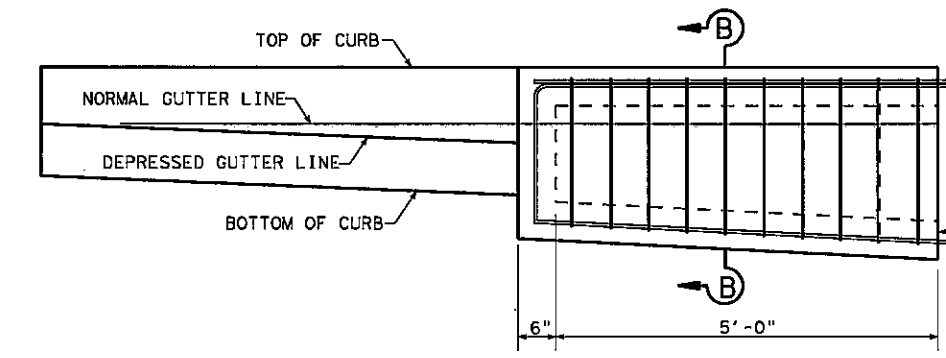


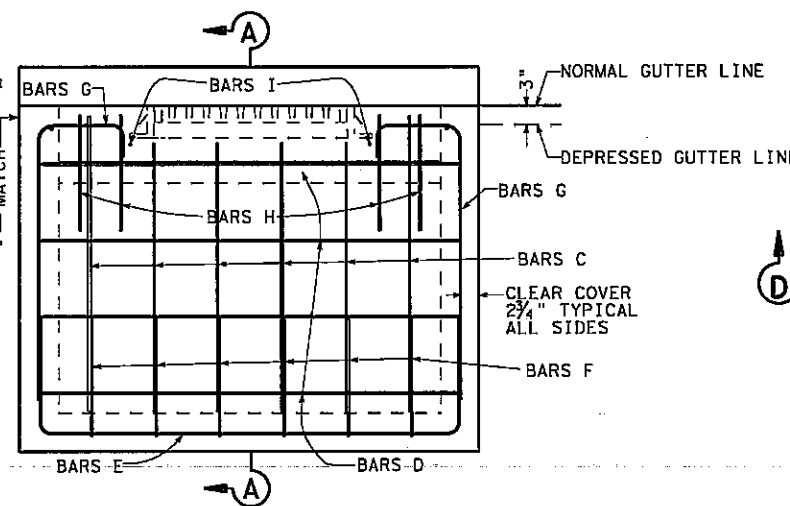
DISCLAIMER: The use of this standard is governed by the "Texas Engineering Practice Act". No warranty of any kind is made by TxDOT for any purpose whatsoever. TxDOT assumes no responsibility for the conversion of this standard to other formats or for incorrect results or damages resulting from its use.



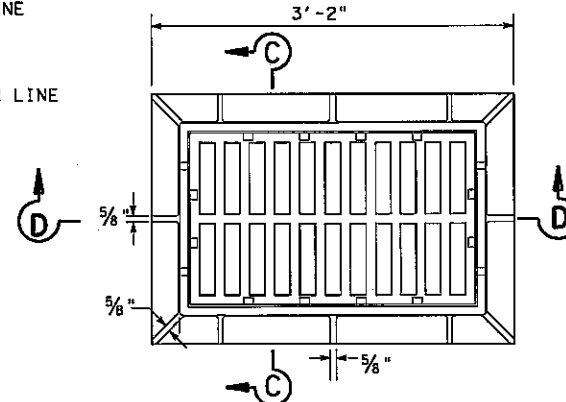
PLAN VIEW



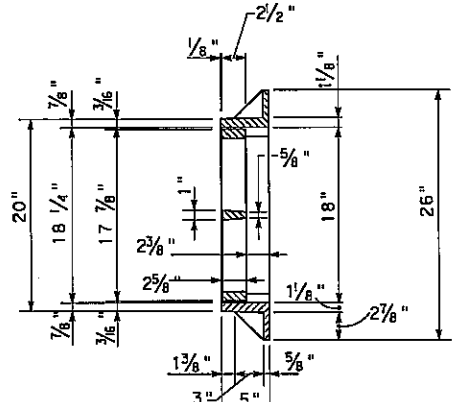
TOP OF INLET DETAIL



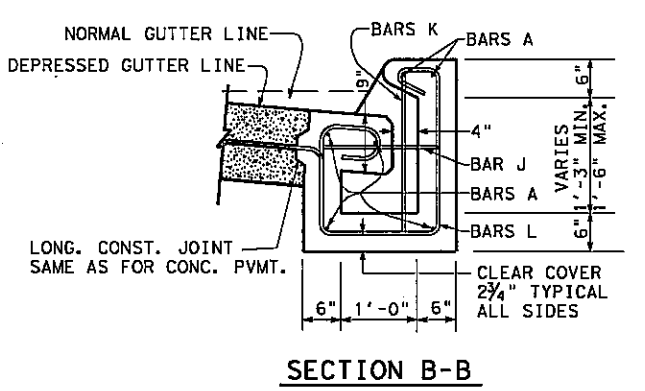
ELEVATION VIEW



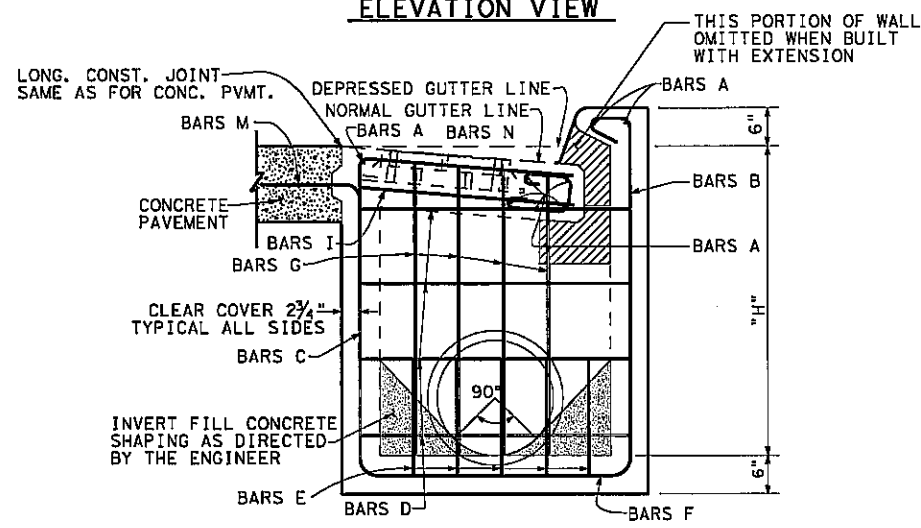
PLAN



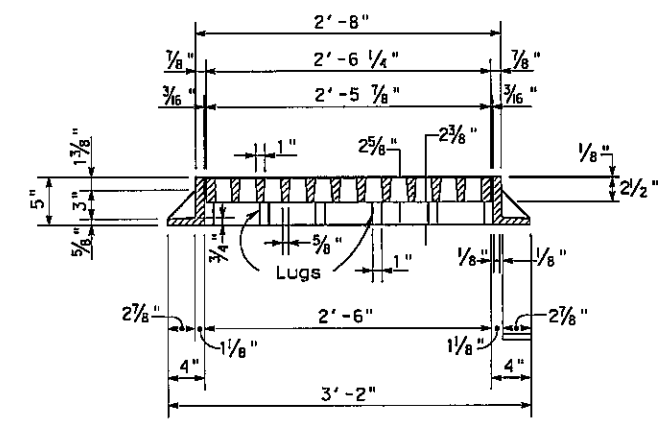
SECTION C-C



SECTION B-B



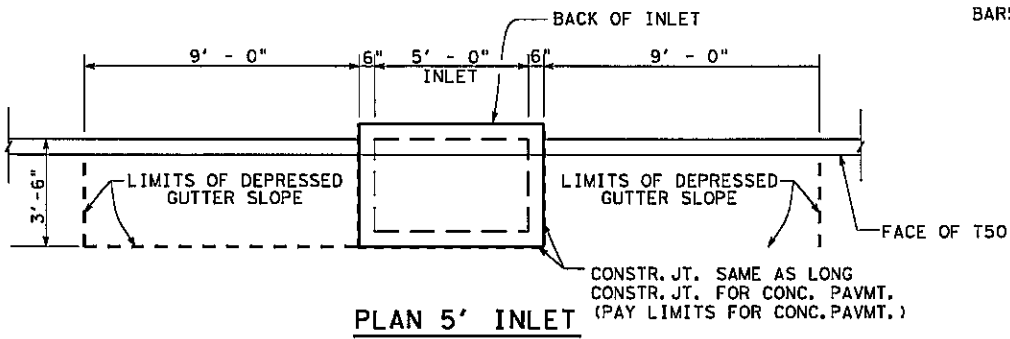
SECTION A-A



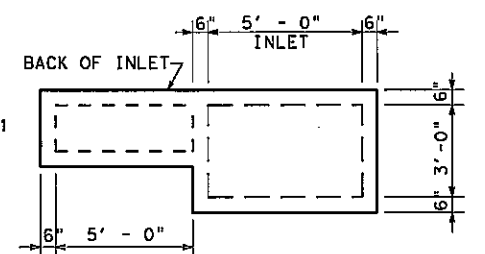
SECTION D-D

FRAME & GRATE TYPE "A"

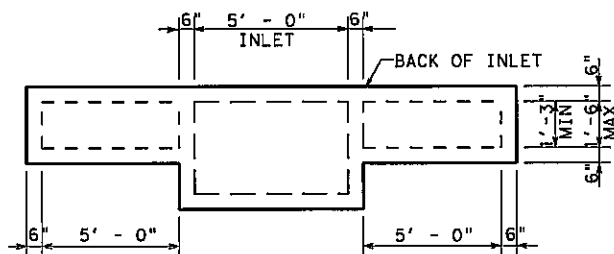
NOTE: FRAME AND GRATE TO BE OF GRAY CAST IRON CONFORMING TO A.S.T.M. SPEC. A-48 FOR CLASS NO. 30 CAST IRON



PLAN 5' INLET



PLAN 10' INLET



PLAN 15' INLET

NOT TO SCALE

SHEET 1 OF 2

Texas Department of Transportation
Dallas District

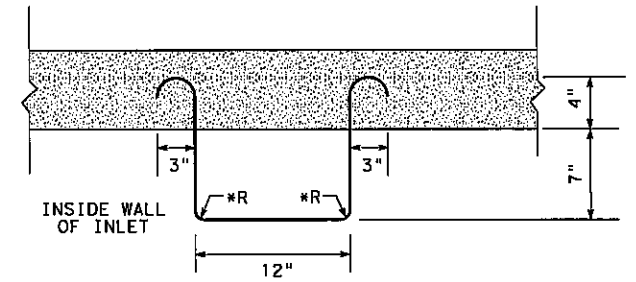
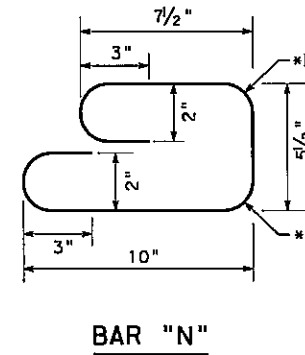
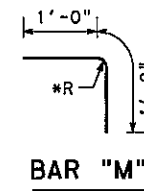
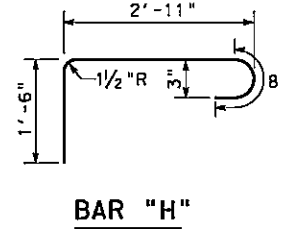
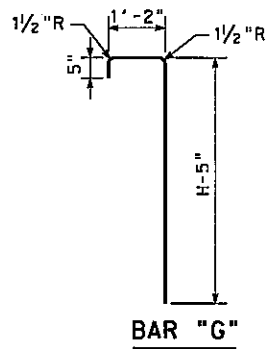
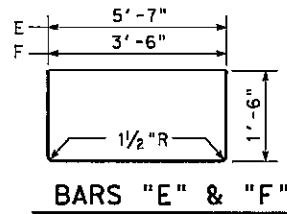
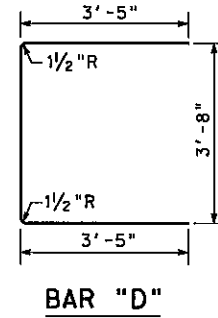
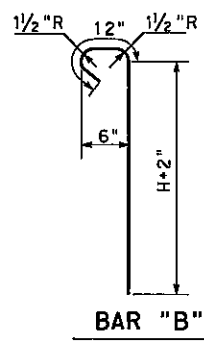
**CURB & GRATE INLET
TYPE I**

CGI(TY I)-08

FILE: CGI(TY I)-08	DN: TxDOT	CK: TxDOT	DW:	CK:
© TxDOT		DISTRICT	FEDERAL AID PROJECT	SHEET
REVISIONS	DAL		COUNTY	CONTROL SECT JOB HIGHWAY

LEVELS DISPLAYED

1	
2	
3	
4	
5	
6	
7	
8	
9	
10	
11	
12	
13	
14	
15	
16	
17	
18	
19	
20	



DETAIL OF INLET STEP
INLET STEP SHALL BE NO. 6
GALVANIZED REINFORCING BAR

* MINIMUM INSIDE DIAMETER OF BAR
BENDS AS PRE TABLE 4 OF ITEM 440

INLET SIZE		INLET REINFORCING STEEL AND CONCRETE																																							
HEIGHT FT.	WIDTH FT.	BAR "A"				BAR "B"				BAR "C" *				BAR "D"				BAR "E"				BAR "F"				BAR "G"				BAR "H"											
		NO.	SZ.	SPACING	LENGTH	WT.	NO.	SZ.	SPACING	LENGTH	WT.	NO.	SZ.	SPACING	LENGTH	WT.	NO.	SZ.	SPACING	LENGTH	WT.	NO.	SZ.	SPACING	LENGTH	WT.	NO.	SZ.	SPACING	LENGTH	WT.	NO.	SZ.	SPACING	LENGTH	WT.					
2.5	3.0	8	6	AS SHN	5'-6"	66	11	4	6"C.C.	2'-4"	17	6	4	10"C.C.	2'-4"	9	4	4	12"C.C.	10'-6"	28	5	4	7"C.C.	8'-0"	27	6	4	10"C.C.	6'-0"	24	8	4	7"C.C.	3'-8"	20	4	4	AS SHN	4'-11"	13
3.0	3.0	8	6	AS SHN	5'-6"	66	11	4	6"C.C.	2'-10"	21	6	4	10"C.C.	2'-10"	11	6	4	12"C.C.	10'-6"	42	5	4	7"C.C.	8'-0"	27	6	4	10"C.C.	6'-0"	24	8	4	7"C.C.	4'-2"	22	4	4	AS SHN	4'-11"	13
3.5	3.0	8	6	AS SHN	5'-6"	66	11	4	6"C.C.	3'-4"	24	6	4	10"C.C.	3'-4"	13	6	4	12"C.C.	10'-6"	42	5	4	7"C.C.	8'-0"	27	6	4	10"C.C.	6'-0"	24	8	4	7"C.C.	4'-8"	25	4	4	AS SHN	4'-11"	13
4.0	3.0	8	6	AS SHN	5'-6"	66	11	4	6"C.C.	3'-10"	28	6	4	10"C.C.	3'-10"	15	8	4	12"C.C.	10'-6"	56	5	4	7"C.C.	8'-0"	27	6	4	10"C.C.	6'-0"	24	8	4	7"C.C.	5'-2"	28	4	4	AS SHN	4'-11"	13
4.5	3.0	8	6	AS SHN	5'-6"	66	11	4	6"C.C.	4'-4"	32	6	4	10"C.C.	4'-4"	17	8	4	12"C.C.	10'-6"	56	5	4	7"C.C.	8'-0"	27	6	4	10"C.C.	6'-0"	24	8	4	7"C.C.	5'-8"	30	4	4	AS SHN	4'-11"	13
5.0	3.0	8	6	AS SHN	5'-6"	66	11	4	6"C.C.	4'-10"	36	6	4	10"C.C.	4'-10"	19	10	4	12"C.C.	10'-6"	70	5	4	7"C.C.	8'-0"	27	6	4	10"C.C.	6'-0"	24	8	4	7"C.C.	6'-2"	33	4	4	AS SHN	4'-11"	13
5.5	3.0	8	6	AS SHN	5'-6"	66	11	4	6"C.C.	5'-4"	39	6	4	10"C.C.	5'-4"	21	10	4	12"C.C.	10'-6"	70	5	4	7"C.C.	8'-0"	27	6	4	10"C.C.	6'-0"	24	8	4	7"C.C.	6'-8"	36	4	4	AS SHN	4'-11"	13
6.0	3.0	8	6	AS SHN	5'-6"	66	11	4	6"C.C.	5'-10"	43	6	4	10"C.C.	5'-10"	23	12	4	12"C.C.	10'-6"	84	5	4	7"C.C.	8'-0"	27	6	4	10"C.C.	6'-0"	24	8	4	7"C.C.	7'-2"	38	4	4	AS SHN	4'-11"	13
7.0	3.0	8	6	AS SHN	5'-6"	66	11	4	6"C.C.	6'-10"	50	6	4	10"C.C.	6'-10"	27	14	4	12"C.C.	10'-6"	98	5	4	7"C.C.	8'-0"	27	6	4	10"C.C.	6'-0"	24	8	4	7"C.C.	8'-2"	44	4	4	AS SHN	4'-11"	13
8.0	3.0	8	6	AS SHN	5'-6"	66	11	4	6"C.C.	6'-10"	58	6	4	10"C.C.	6'-10"	31	14	4	12"C.C.	10'-6"	98	5	4	7"C.C.	8'-0"	27	6	4	10"C.C.	6'-0"	24	8	4	7"C.C.	8'-2"	49	4	4	AS SHN	4'-11"	13
9.0	3.0	8	6	AS SHN	5'-6"	66	11	4	6"C.C.	6'-10"	65	6	4	10"C.C.	6'-10"	35	14	4	12"C.C.	10'-6"	98	5	4	7"C.C.	8'-0"	27	6	4	10"C.C.	6'-0"	24	8	4	7"C.C.	8'-2"	54	4	4	AS SHN	4'-11"	13
10.0	3.0	8	6	AS SHN	5'-6"	66	11	4	6"C.C.	6'-10"	72	6	4	10"C.C.	6'-10"	39	14	4	12"C.C.	10'-6"	98	5	4	7"C.C.	8'-0"	27	6	4	10"C.C.	6'-0"	24	8	4	7"C.C.	8'-2"	60	4	4	AS SHN	4'-11"	13

* REDUCE BAR LENGTH AS
NECESSARY TO PROVIDE
CLEARANCE UNDER GRATE

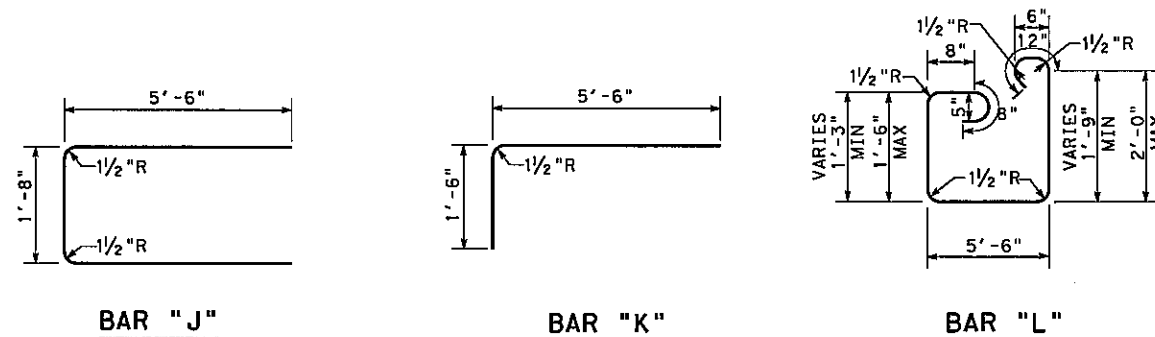
INLET SIZE		INLET REINFORCING STEEL AND CONCRETE (CONT.)												TOTALS				
HEIGHT FT.	WIDTH FT.	BAR "I"				BAR "M"				BAR "N"				STEEL LBS.	CONC. C.Y.			
		NO.	SZ.	SPACING	LENGTH	WT.	NO.	SZ.	SPACIN	LENGTH	WT.	NO.	SZ.			SPACING	LENGTH	WT.
2.5	3.0	2	4	AS SHN	2'-9"	4	7	4	24"C.C.	2'-0"	9	21	3	3"C.C.	2'-5"	19	236	1.63
3.0	3.0	2	4	AS SHN	2'-9"	4	7	4	24"C.C.	2'-0"	9	21	3	3"C.C.	2'-5"	19	258	1.80
3.5	3.0	2	4	AS SHN	2'-9"	4	7	4	24"C.C.	2'-0"	9	21	3	3"C.C.	2'-5"	19	266	1.96
4.0	3.0	2	4	AS SHN	2'-9"	4	7	4	24"C.C.	2'-0"	9	21	3	3"C.C.	2'-5"	19	289	2.13
4.5	3.0	2	4	AS SHN	2'-9"	4	7	4	24"C.C.	2'-0"	9	21	3	3"C.C.	2'-5"	19	297	2.29
5.0	3.0	2	4	AS SHN	2'-9"	4	7	4	24"C.C.	2'-0"	9	21	3	3"C.C.	2'-5"	19	320	2.46
5.5	3.0	2	4	AS SHN	2'-9"	4	7	4	24"C.C.	2'-0"	9	21	3	3"C.C.	2'-5"	19	328	2.62
6.0	3.0	2	4	AS SHN	2'-9"	4	7	4	24"C.C.	2'-0"	9	21	3	3"C.C.	2'-5"	19	350	2.79
7.0	3.0	2	4	AS SHN	2'-9"	4	7	4	24"C.C.	2'-0"	9	21	3	3"C.C.	2'-5"	19	381	3.12
8.0	3.0	2	4	AS SHN	2'-9"	4	7	4	24"C.C.	2'-0"	9	21	3	3"C.C.	2'-5"	19	398	3.45
9.0	3.0	2	4	AS SHN	2'-9"	4	7	4	24"C.C.	2'-0"	9	21	3	3"C.C.	2'-5"	19	414	3.78
10.0	3.0	2	4	AS SHN	2'-9"	4	7	4	24"C.C.	2'-0"	9	21	3	3"C.C.	2'-5"	19	431	4.11

CONCRETE TO
BE DEDUCTED
FOR ONE PIPE

PIPE DIA.	CONC. C.Y.
15"	0.04
18"	0.05
21"	0.07
24"	0.09
27"	0.11
30"	0.14
36"	0.20

GENERAL NOTES:

- ALL CONCRETE SHALL BE CLASS "A".
- ALL EXPOSED CORNERS SHALL BE CHAMFERED 3/4".
- INLET STEPS SPACED 14" C.C. AND LOCATED AND DIRECTED BY THE ENGINEER, SHALL BE PROVIDED AND INSTALLED IN ALL INLETS WHERE THE DEPTH EXCEEDS 5'-0".
- DIMENSIONS RELATING TO REINFORCING STEEL ARE TO THE CENTER OF THE BARS.
- TOTAL QUANTITIES SHOWN FOR CONCRETE AND REINFORCING STEEL ARE APPROXIMATE AND ARE PLACED HEREON FOR INFORMATIONAL PURPOSES ONLY.



INLET REINFORCING STEEL AND
CONCRETE FOR ONE 5' EXTENSION

BAR	NO.	SIZE	SPACING	LENGTH	WT.
A	6	6	AS SHN	5'-6"	50
J	1	4	AS SHN	12'-8"	8
K	1	4	AS SHN	7'-4"	5
L	10	4	6"C.C.	6'-7" TO 7'-1"	46
M	4	4	24"C.C.	1'-11"	5
TOTAL REINFORCING STEEL (LBS.)					114
TOTAL CONCRETE (C.Y.)					0.64

CURB & GRATE INLET
TYPE I

CGI (TY I) -08

FILE: CGI (TY I) -08	DN: TxDOT	CK: TxDOT	DW:	CK:
© TxDOT REVISIONS	DISTRICT	FEDERAL AID PROJECT		SHEET
	DAL	COUNTY	CONTROL SECT	JOB
				HIGHWAY

NOT TO SCALE

DISCLAIMER:
The use of this standard is governed by the "Texas Engineering Practice Act". No warranty of any kind is made by TxDOT for any purpose whatsoever. TxDOT assumes no responsibility for the conversion of this standard to other formats or for incorrect results or damages resulting from its use.

LEVELS DISPLAYED