

## DALLAS DISTRICT

## PROGRESS

Monthly Report on Dallas District Projects and Topics

\*\*\*

COLLIN CO. | DALLAS CO. | DENTON CO. | ELLIS CO. | KAUFMAN CO. | NAVARRO CO. | ROCKWALL CO.

# DFW Connector's **TEXpress** Lanes Are Open

## Managed Lanes Make Their Second Appearance in North Texas

The Texas Department of Transportation (TxDOT) opened the TEXpress Lanes (toll managed lanes) on the DFW Connector on Tuesday, April 1, as a tool for managing congestion. The lanes are on a 4-mile segment of SH 114, just west of SH 26 to east of International Parkway (DFW Airport).



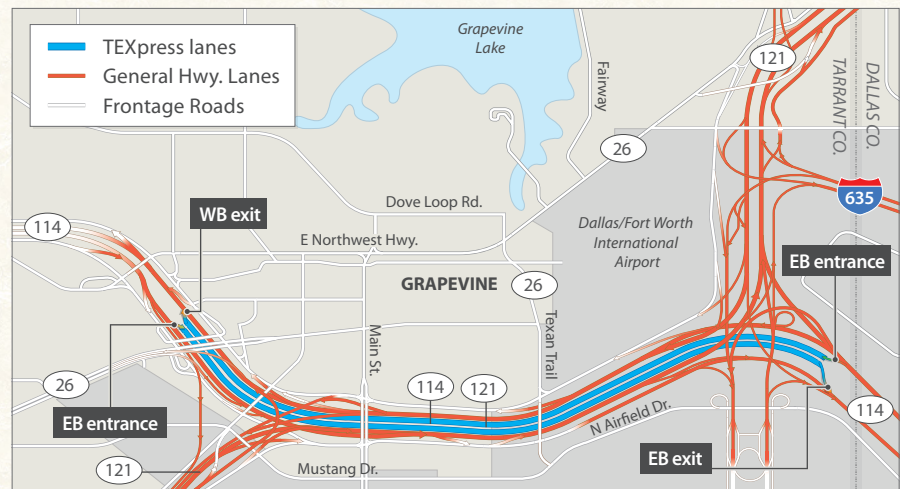
The TEXpress Lanes run parallel to fully reconstructed main lanes and frontage roads, offering drivers the option to pay a variable toll. The lanes on the

DFW Connector opened on April 1 at zero cost for a temporary introductory period. The incentive period will allow the traveling public to try the lanes, while providing TxDOT an opportunity to continue to test tolling equipment.

Later this spring, the incentive period will change and tolls will be charged along the 4-mile segment. Initially, the single-occupancy passenger vehicle rate will have a range of \$0.67 to \$1.00 for the entire segment when using a TollTag from the North Texas Tollway Authority, a TxTAG or an EZ-Pass from the Harris County Toll Road Authority.

The rate varies depending on the time of day (peak vs. non-peak hours). Rates also will vary depending on use of a TollTag or other transponder or pay-by-mail, and depending on vehicle occupancy and number of axles on a vehicle.

Toll rates will be posted and clearly marked on electronic signs prior to drivers entering the TEXpress Lanes. In the future, tolls will fluctuate according to traffic volume and rate of speed. Electronic sensors in the corridor will measure



NOTE: Highlighted areas are not drawn to scale.

TxDOT graphic

congestion every few minutes and electronically recalibrate the rates. As congestion increases, the toll rate will increase to ensure that a minimum predictable speed of 50 mph is maintained.

Drivers with a valid NTTA TollTag, TxTag or EZ TAG on their passenger vehicle, along with HOV (High-Occupancy Vehicle) status, will receive discounted rates. HOV discounts can be obtained by pre-registering at [www.DriveOnTEXpress.com](http://www.DriveOnTEXpress.com). (See **back page** for rate details).

The DFW Connector's TEXpress Lanes are the second to open in North Texas. These lanes have been developed over the past several years by transportation planners at the North Central Texas Council of Governments (NCTCOG) and TxDOT, along with other industry experts. The first TEXpress Lanes opened on a 3.2-mile segment of the LBJ Express (Interstate 635) in Dallas in December. After the DFW Connector's

opening, the LBJ Express will open another segment this summer and the North Tarrant Express (SH 183 and I-820 in Fort Worth) lanes are expected to open at the end of 2014.

Extensive information about the TEXpress Managed Lanes network is available at [www.txdot.gov](http://www.txdot.gov), keyword "texpress lanes" and at [www.texpresslanes.com](http://www.texpresslanes.com).

The DFW Connector TEXpress Lanes are part of a \$1.1 billion project that reached substantial completion at the end of 2013. The project consisted of eight-and-a-half miles of construction across four highways (including SH 114 and SH 121), two interchanges and more than 39 bridges. The DFW Connector not only expanded roadway capacity, but also improved air quality and alleviated congestion in a heavily traveled area of North Texas - all six months ahead of schedule. ■

APRIL 2014 LET PROJECTS

CSJ NUMBER	HWY	LIMITS	TYPE OF WORK	EST. (M)	BID (M)	(%)	EST. TOTAL PROJ. COSTS (M) ***	CONTRACTOR	
0197-02-114	US 175	0.5 miles west of Simonds Rd. to 1800 feet east of Malloy Bridge Rd.	Install safety lighting	\$0.74	\$0.62	-15.94	\$0.73	South Texas Illumination, LLC	1
0442-02-156	I-35E	US 77 merge (north) to 8th street	Install signing for truck lane restrictions	\$0.31	\$0.33	4.72	\$0.41	Highway Intelligent Traffic Solutions, Inc.	2
0581-02-139	LP 12	Cockrell Hill Rd. To Anderson St.	Bridge deck repairs	\$0.31	\$0.25	-17.39	\$0.32	Gibson & Associates, Inc.	3
0816-04-047	FM 455	CR 98 to FM 3356	Provide additional paved surface width	\$5.99	\$5.54	-7.64	\$6.49	Austin Bridge & Road, LP	4
2374-07-067	I-635	Beltline Rd. to Farmers Branch Creek	Full depth repair and mill and overlay	\$2.66	\$2.94	10.38	\$3.50	O.Trevino Construction, LLC	5
<b>APRIL 2014 TOTAL</b>				<b>\$10.01</b>	<b>\$9.68</b>	<b>-3.37</b>	<b>\$11.45</b>		
<b>DISTRICT FY ACCUMULATIVE LETTINGS</b>				<b>\$235.95</b>	<b>\$220.78</b>	<b>-6.43</b>			
<b>DALLAS DISTRICT LETTING CAP</b>				<b>\$1,384.34**</b>					

\*\*District FY 2014 Letting Volume Cap includes the following:  
1) The SH 183 Managed Lanes Project for \$837 million.

\*\*\*Est. Total Project Costs includes estimated PE, ROW, E&C, Indirect Costs and potential Change Costs at the time of bid.

MAY 2014 PROJECTED LETTING PROJECTS (SUBJECT TO CHANGE)

CSJ NUMBER	HWY	LIMITS	TYPE OF WORK	EST. (M)	
0196-03-267	IH 35E	Empire Central to LP 12	Installation of fiber optic cable	\$0.10	1
0581-02-140	LP 12	SP 408 to WestFork of Trinity River	Full depth repair, mill and overlay	\$2.70	2
0751-02-023	FM 148	FM 1390 south to US 175 south	Rehabilitation of existing roadway	\$9.30	3
1567-02-032	FM 423	Stewarts Creek Road to SH 121	SH 121 to Cougar Alley - widen 4 to 8 lane divided urban; Cougar Alley to Stewarts Crk Rd. - widen 4 to 6 lane divided urban	\$54.38	4
2250-02-016	LP 288	I-35 to US 377/US 380	Full depth concrete pavement repair	\$5.26	5
0173-02-070*	VA	Various hwys. in Kaufman, Rockwall and Collin Counties	Texturized pavement markings	\$1.63	
0261-03-065*	VA	Various locations on US 67, I-35E, and I-20 in Dallas Co.	Install bridge protection	\$0.30	
<b>TOTAL</b>				<b>\$73.67</b>	

\*Unmapped.

COMPLETED CONSTRUCTION PROJECTS (FROM APRIL 1 – 30, 2014)

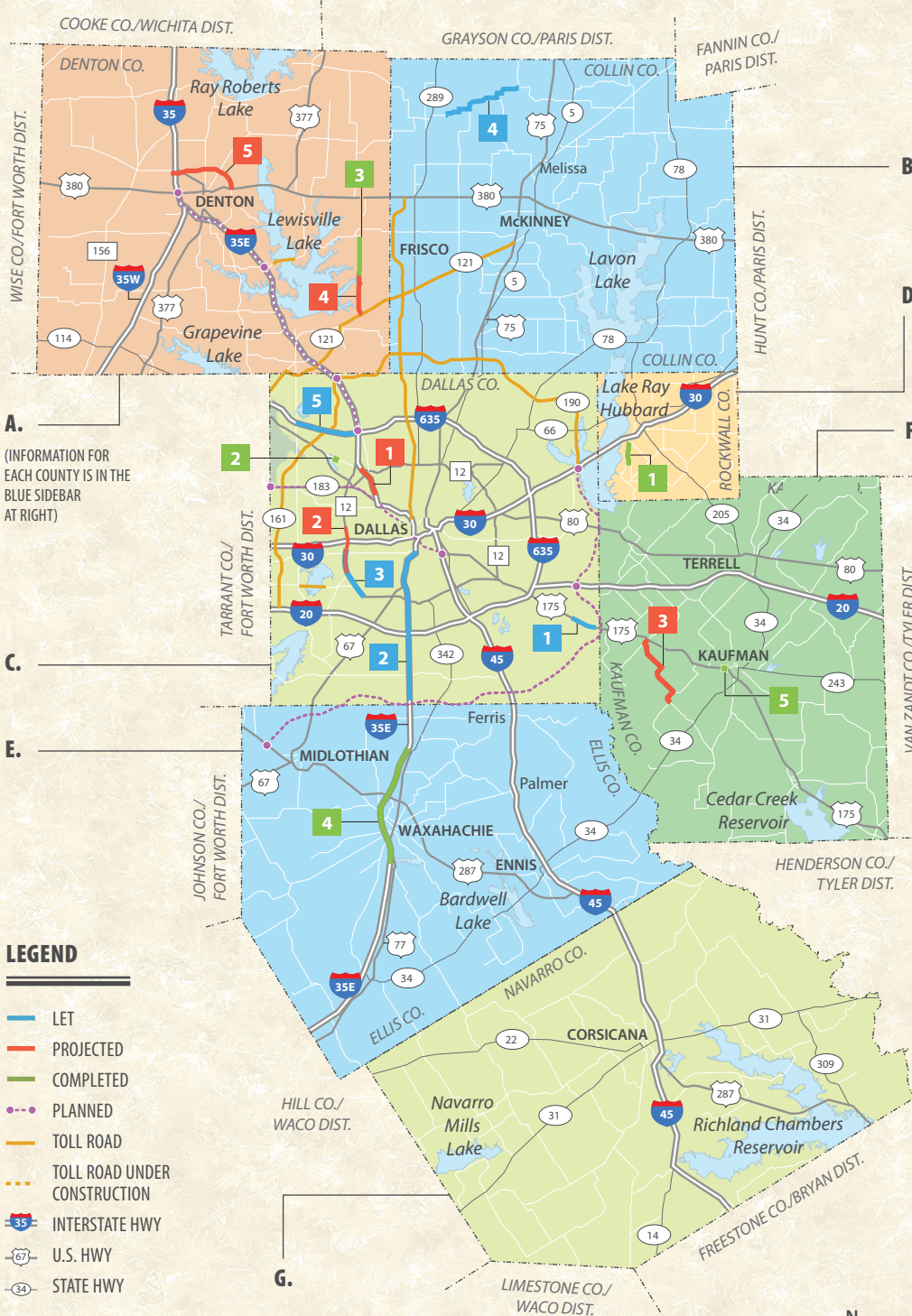
CSJ NUMBER	HWY	LIMITS	TYPE OF WORK	DATE COMPLETED	COST (M)	
1014-03-057	FM 740	FM 3097 to FM 1140	Landscape Development	04/29/14	\$0.51	1
0353-04-093	SP 348	At Riverside Drive in Irving	Landscape development	04/08/14	\$0.11	2
1567-02-027	FM 423	S of FM 2934 to Stewarts Creek Rd.	Widen to 6-lane divided roadway	04/02/14	\$29.93	3
0048-04-083	I-35E	US 287 to south of US 77 North	Base Repair & Overlay of Frontage Roads	04/29/14	\$7.46	4
0197-04-076	US 175	At SH 243	Landscape development	04/08/14	\$0.15	5
<b>TOTAL</b>					<b>\$30.19</b>	

SOURCE: Texas Department of Transportation.

TxDOT graphic

# DALLAS DISTRICT PROJECTS MAP

Colored and numbered boxes correspond with the charts on page 2 and show projects that have let in April, are projected to let in May or have recently been completed.

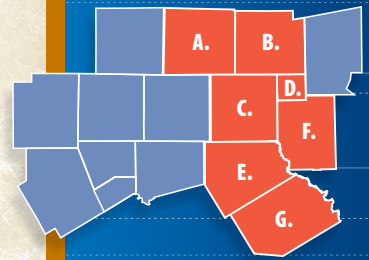
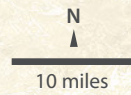


A.  
(INFORMATION FOR EACH COUNTY IS IN THE BLUE SIDEBAR AT RIGHT)

## LEGEND

- LET
- PROJECTED
- COMPLETED
- - - PLANNED
- TOLL ROAD
- - - TOLL ROAD UNDER CONSTRUCTION
- INTERSTATE HWY
- U.S. HWY
- STATE HWY

SOURCE: TxDOT research.  
\*POPULATION ESTIMATE: NCTCOG.



## DALLAS DISTRICT TOTALS

VEHICLE REGISTRATION | 3,591,178  
\*POPULATION ESTIMATE | 4,259,090  
LANE MILES | 10,847.34

**A. | DENTON COUNTY**  
VEHICLE REGISTRATION: 559,501  
\*POPULATION ESTIMATE: 683,010  
LANE MILES: 1,597.47

**B. | COLLIN COUNTY**  
VEHICLE REGISTRATION: 680,383  
\*POPULATION ESTIMATE: 804,390  
LANE MILES: 1,563.69

**C. | DALLAS COUNTY**  
VEHICLE REGISTRATION: 1,952,662  
\*POPULATION ESTIMATE: 2,385,990  
LANE MILES: 3,440.13

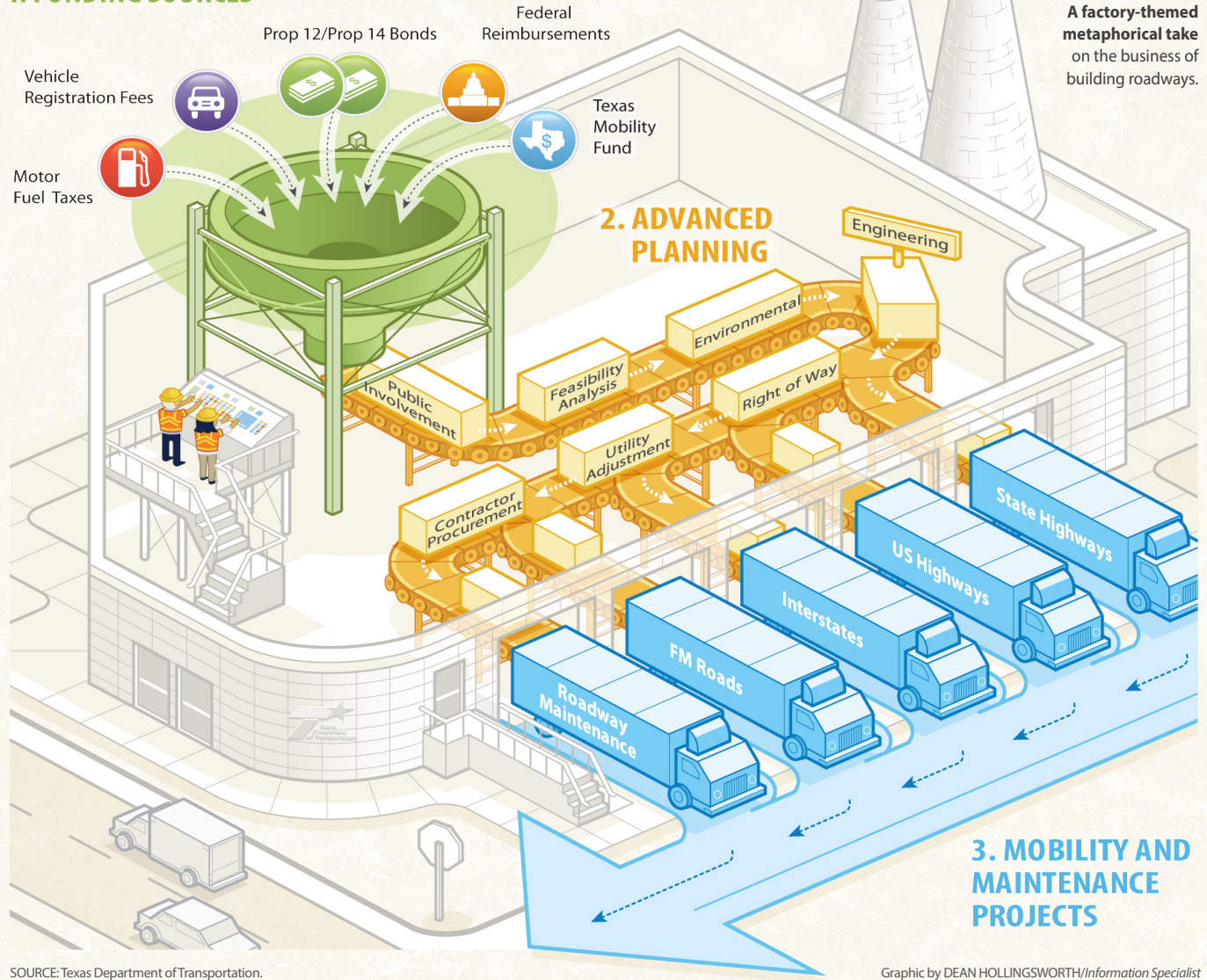
**D. | ROCKWALL COUNTY**  
VEHICLE REGISTRATION: 79,075  
\*POPULATION ESTIMATE: 80,270  
LANE MILES: 346.35

**E. | ELLIS COUNTY**  
VEHICLE REGISTRATION: 165,360  
\*POPULATION ESTIMATE: 152,580  
LANE MILES: 1,516.77

**F. | KAUFMAN COUNTY**  
VEHICLE REGISTRATION: 103,929  
\*POPULATION ESTIMATE: 104,600  
LANE MILES: 1,191.95

**G. | NAVARRO COUNTY**  
VEHICLE REGISTRATION: 50,268  
\*POPULATION ESTIMATE: 48,250  
LANE MILES: 1,190.98

# 1. FUNDING SOURCES



A factory-themed metaphorical take on the business of building roadways.

SOURCE: Texas Department of Transportation.

Graphic by DEAN HOLLINGSWORTH/Information Specialist

## DFW CONNECTOR TEXPRESS LANE TOLL RATES (DURING SCHEDULED FIXED PERIOD)

Period	Direction	Two-Axle	Three-Axle	Four-Axle	Five-Axle	Six-Axle
		ETC*	ETC*	ETC*	ETC*	ETC*
<b>AM Peak Period</b> (6:30 am - 9:00 am, Mon-Fri)	Eastbound	\$1.00	\$2.00	\$3.00	\$4.00	\$5.00
	Westbound	\$1.00	\$2.00	\$3.00	\$4.00	\$5.00
<b>PM Peak Period</b> (3:00 pm - 6:30 pm, Mon-Fri)	Eastbound	\$1.00	\$2.00	\$3.00	\$4.00	\$5.00
	Westbound	\$1.00	\$2.00	\$3.00	\$4.00	\$5.00
<b>Mid-Day Period</b> (9:00 am - 3:00 pm, Mon-Fri)	Eastbound	\$0.67	\$1.34	\$2.01	\$2.68	\$3.35
	Westbound	\$0.67	\$1.34	\$2.01	\$2.68	\$3.35
<b>Remaining Hours</b> (6:30 pm - 6:30 am, Mon-Fri)	Eastbound	\$0.67	\$1.34	\$2.01	\$2.68	\$3.35
	Westbound	\$0.67	\$1.34	\$2.01	\$2.68	\$3.35
<b>Weekends</b>	Eastbound	\$0.67	\$1.34	\$2.01	\$2.68	\$3.35
	Westbound	\$0.67	\$1.34	\$2.01	\$2.68	\$3.35

NOTES: 1) Rates shown for Single Occupancy Vehicles with a valid tag. (A 50 percent surcharge applies to vehicles without a valid tag.) 2) A 50 percent discount applied for HOV and motorcycles with valid tags that enroll an activate their HOV 2+ status online (valid during Peak Periods only) as per the Regional Transportation Council's Managed Lane Policy. \* ETC = Electronic Toll Collection

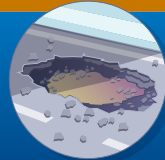
### DALLAS DISTRICT | PROGRESS



TEXAS DEPARTMENT OF TRANSPORTATION  
4777 E. Highway 80  
Mesquite, TX  
75150-6643

#### FOR MORE INFORMATION:

214-320-4480  
dalinfo@txdot.gov  
[www.txdot.gov](http://www.txdot.gov)



#### REPORT A POTHOLE:

Visit [www.txdot.gov/contact-us/formhtml?form=Report\\_a\\_Pothole](http://www.txdot.gov/contact-us/formhtml?form=Report_a_Pothole) or call 800.452.9292. Progress report can be downloaded at <http://www.txdot.gov/inside-txdot/district/dallas/progress.html>