

Managed Lanes To Offer Initial '2-plus' Discount

The new managed lanes under construction in Tarrant and Dallas counties will initially offer peak-period discounts to cars with two or more occupants.

The Regional Transportation Council decided last month to open the new lanes with rules similar to the current HOV lanes, which have required vehicles with two-plus occupants since opening 20 years ago. Single-occupant vehicles will be able to use the lanes for a fee, but will not qualify for any discounts. To be consistent with the new managed lanes, the current HOV lanes will also allow single-occupant vehicles to use them, for a toll, if there is sufficient capacity.

The RTC worked for several months on policies for the existing high-occupancy vehicle lanes and the new managed lanes, considering a variety of options, including requiring a minimum of three occupants

in each vehicle to qualify for the lower rate.

Policymakers determined it would be better if the new managed lanes, to be called TEXpress Lanes, initially required two or more occupants for the 50 percent peak-period discount. The lower rate will apply from 6:30-9 am and 3-6:30 pm.

By 2016, vehicles will be required to carry three or more people, including the driver, to receive the discount during rush hour. The transition could take place sooner, if data support a change, according to the policy.

The new lanes, being built adjacent to toll-free lanes on part of LBJ Freeway and the North Tarrant Express, will open in phases, with the first segment, on LBJ, slated to welcome cars in December of 2013. ■

SOURCE: North Central Texas Council of Governments (NCTCOG).

Reprint from article in the NCTCOG publication *Local Motion*

WHERE DOES THE 38.4¢ GAS TAX GO?

FEDERAL GAS TAX: 18.4¢

Returned to Texas Highways 12.9¢

Returned to Texas Transit 1.4¢

Sent to Other States 4.1¢

STATE GAS TAX: 20¢

Public Education 4.9¢

TxDOT 7.5¢

Other Non-Transportation Uses 5.5¢

Prop 14 Debt Service 1.5¢

Comptroller Collection Expenses 0.6¢

Non-Texas Transportation 15.1¢

Debt Service 1.5¢

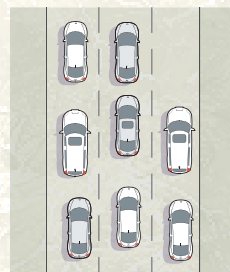
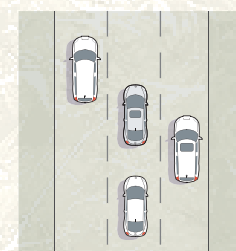
Texas Transit 1.4¢

Texas Highways 20.4¢

ROAD CAPACITY HASN'T KEPT PACE WITH POPULATION GROWTH

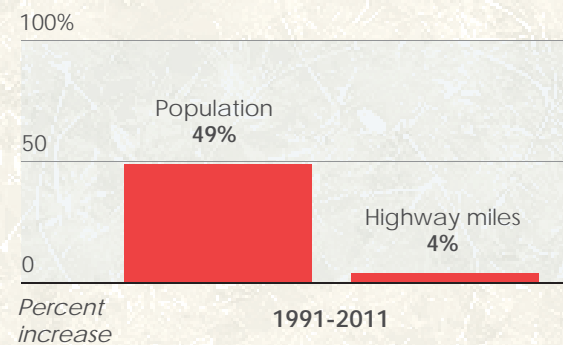
76,843
(highway miles)

79,994
(highway miles)



1991

2011



SOURCE: American Community Survey, U.S. Census Bureau.

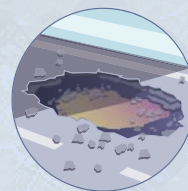
TxDOT graphic



KUDOS! From Michael M. of Mesquite: I used to read your highway billboards with a level of disbelief. I was either in the middle of an accident snarl that wasn't reported, or the report was old and the accident site had been cleaned up and traffic resumed natural flow. Now the billboards list problem areas in REAL TIME! Thanks so much. People can ignore the warnings at their own risk. I have found them to NOW be very helpful! Less travel frustration. Thanks - Mike.

Texas Department of Transportation
4777 E. Highway 80
Mesquite, TX
75150-6643

FOR MORE INFORMATION:
214-320-4480
dalinfo@txdot.gov
www.txdot.gov



REPORT A POTHOLE:

Visit www.txdot.gov/contact_us/potholes or call 888-885-8248. Progress report can be downloaded at www.txdot.gov/local_infrastructure/dallas_district

TEXAS DEPARTMENT OF TRANSPORTATION

DALLAS DISTRICT

PROGRESS

COLLIN * DALLAS * DENTON * ELLIS * KAUFMAN * NAVARRO * ROCKWALL *** MARCH 2013

WANT TO MAKE A DIFFERENCE?

Adopt-A-Highway!

What started out as a pilot program in 1985 has now grown into a nationally-recognized program across the world, and it was just 28 years ago when the first stretch of roadway was adopted in Texas.



TxDOT photo archives

It began in 1985 when James R. "Bobby" Evans, a TxDOT district engineer in Tyler, and Public Information Officer Billy Black began a campaign to encourage their community's citizens to take responsibility for their land. Knowing the department's increasing cost of litter removal, they appealed to local groups to "adopt" sections of highway by committing to clean up litter on a regular basis. The program soon spread statewide and



across the nation and now has been implemented internationally in countries such as Puerto Rico, Canada, New Zealand, Australia and Japan.

"Personal involvement has proven to be the best way to keep our roads clean. The Adopt-A-Highway program costs nothing for individual groups like businesses and civic organizations to get involved, and in return for their efforts, they gain public recognition." Billy Black, Co-Founder, Adopt-A-Highway.

Who Should Adopt? Individuals, families, youth organizations, businesses (large and small), civic and non-profit organizations, religious groups, fraternities, sororities, schools... everyone should take pride and Adopt-A-Highway. The Adopt-A-Highway program gives citizens an opportunity to support the department's litter prevention programs by adopting a section of highway for the purpose of reducing litter on an adopted section through public participation. More and more people are coming to Texas, which translates to – more people – more cars – more traffic – more litter! Volunteers are needed more than ever to help keep Texas highways beautiful. Sign up today, to participate in this year's Trash-Off on April 6.

Currently, nearly 4,000 groups pick up litter on more than 8,000 miles of state-maintained highway in Texas. Groups who volunteer make a two-year

commitment to remove litter from a two-mile stretch of the roadside several times a year, and each group is recognized with signs designating their adopted section of highway. TxDOT provides safety training, trash bags and safety vests and hauls the filled trash bags away. We salute the thousands of volunteers who make a difference and keep our roadway clean and beautiful! ■

For media information, please contact TxDOT representative Susie Williams at Susie.Williams@txdot.gov or call (214) 320-4480.

commitment to remove litter from a two-mile stretch of the roadside several times a year, and each group is recognized with signs designating their adopted section of highway. TxDOT provides safety training, trash bags and safety vests and hauls the filled trash bags away. We salute the thousands of volunteers who make a difference and keep our roadway clean and beautiful! ■



TxDOT photo archives

SH: State Highway FM: Farm to Market CR: County Road CS: City Street LP: Loop SP: Spur BUS: Business VA: Various locations

(Colored numbers located on map at right)

FEBRUARY 2013 LET PROJECTS

CSJ number	Hwy	Limits	Type of work	Est. (millions)	Bid (millions)	(%)	Contractor	
0095-02-109	US 80	Culvert 0.3 mile east of East Fork Rd.	Repair slope/w headwall	\$0.24	\$0.26	6.07	West General Contractors Corp.	1
0095-03-086	US 80	US 80 at FM 740 S and FM 688 at FM 740 E in Forney	Rehabilitation of traffic signals	\$0.29	\$0.25	-15.18	Roadway Solutions, Inc.	2
0196-02-122	I-35E	0.2 miles S of Eagle Point Rd. to 0.04 miles N of Eagle Point Rd.	Install safety lighting	\$0.22	\$0.16	-28.83	Roadway Solutions, Inc.	3
0918-46-263*	VA	Various locations on state highways in Denton County	Construct curb ramps	\$2.31	\$1.93	-16.49	Texas Highway Maintenance, LLC	
February 2013 total				\$3.06	\$2.60	-15.48		
District FY Accumulative Lettings				\$146.81	\$136.49	-7.03		
**Dallas District letting cap				\$1,240.81				

* Unmapped.

MARCH 2013 PROJECTED LETTING PROJECTS (Subject to change)

CSJ number	Hwy	Limits	Type of work	Estimate (millions)	
0047-05-051	SH 5	1350' north of Dart RR overpass to Wilson Creek Bridge	Base repair, overlay, and turn lane	\$1.13	1
0091-03-024	SH 289	North Bus 289-C to Grayson Co. Line	Base repair and 2" overlay	\$0.72	2
0581-01-135	LP 12	At Union Pacific RR near SH 310	Repair slope with retaining wall	\$0.60	3
0596-02-041	FM 66	FM 66 - Hill C/L to FM 916 & FM 661 - US 287 to Tarrant C/L	Base and pavement repair, HMAC overlay	\$2.07	4
0815-08-027	FM 663	South of US 287 to north of US 287	Widen existing overpass and approaches	\$3.74	5
0816-04-044	FM 455	US 75 NB frontage road to SH 5	Widen from 4 to 6 lane divided urban	\$11.03	6
0918-22-142	CS	On Pratt Rd., SE of SH 342 at Bear Creek in Red Oak	Replace bridge and approaches	\$0.65	7
1092-01-018	FM 741	FM 740 to Monitor Blvd. in Forney	Landscape development	\$0.33	8
1311-01-034	FM 1171	I-35W to west of Shiloh Rd.	Widen two lane rural to six lane divided	\$51.10	9
1973-01-012	FM 1461	SH 289 to CR 123 (end of maintenance)	Base repair and level-up	\$1.41	10
0918-00-162*	VA	Districtwide	Non-site specific installation of guide signs	\$0.40	
Total				\$73.18	

* Unmapped.

COMPLETED CONSTRUCTION PROJECTS (From February 1 - 28, 2013)

CSJ number	Hwy	Limits	Type of work	Date completed	Cost (millions)	
0047-05-050	SH 5	At Eldorado Pkwy/FM 546 at Tennessee St.	Intersection improvements	2/07/13	\$1.71	1
0047-06-148	US 75	At PGBT	ITS Interagency connection	2/05/13	\$1.15	2
0091-04-041	SH 289	US 380 to FM 3537	Widen to 6 lane divided highway	2/14/13	\$35.05	3
2351-01-013	FM 2478	Stonebridge Dr. to US 380	Widen to 6 lane divided highway	2/21/13	\$33.74	4
0047-07-220	US 75	SP 366 to I-635	Landscape development	2/13/13	\$0.41	5
0442-02-149	I-35E	LP 12 to Marsalis Ave.	Refurbish mast illumination	2/05/13	\$1.97	6
0442-02-153	I-35E	Ellis Co. Line to Glen Heights N city limits	Landscape development	2/26/13	\$0.22	7
0918-47-038*	VA	Various Locations in Dallas Co.	Refurbish ITS	2/05/13	\$0.32	
Total					\$74.57	

* Unmapped.

SOURCE: Texas Department of Transportation.

TxDOT graphic

DISTRICT PROJECTS

Colored and numbered boxes correspond with the charts at left and show projects that have let in February, are projected to let in March and those that were recently completed.

DENTON COUNTY

Vehicle registration: 539,776

*Population estimate: 683,010

Lane miles: 1,581.79

DALLAS COUNTY

Vehicle registration: 1,897,363

*Population estimate: 2,385,990

Lane miles: 3,345.69

ELLIS COUNTY

Vehicle registration: 159,399

*Population estimate: 152,580

Lane miles: 1,514.05

NAVARRO COUNTY

Vehicle registration: 49,015

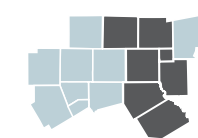
*Population estimate: 48,250

Lane miles: 1,193.96



KEY

■ Let	■ Projected	■ Completed	● Planned	— Toll road	— Toll road under construction	Interstate hwy	U.S. hwy	State hwy
---	--	--	---	---	--	----------------	----------	-----------



DALLAS DISTRICT TOTALS

Vehicle registration: 3,478,605

*Population estimate: 4,259,090

Lane miles: 10,639.61

SOURCE: TxDOT research. *POPULATION ESTIMATE: NCTCOG.

TxDOT graphics