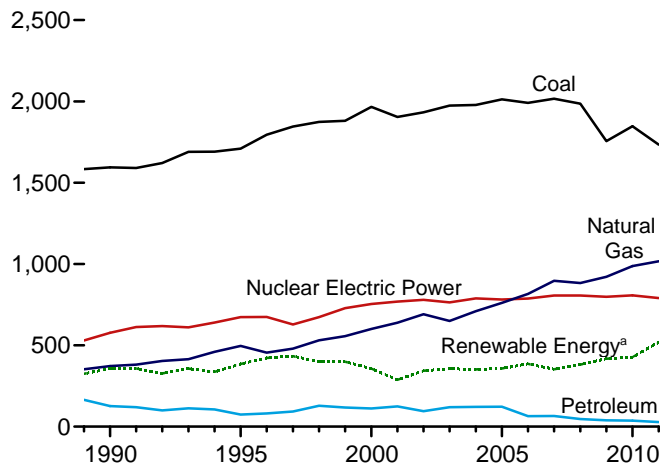
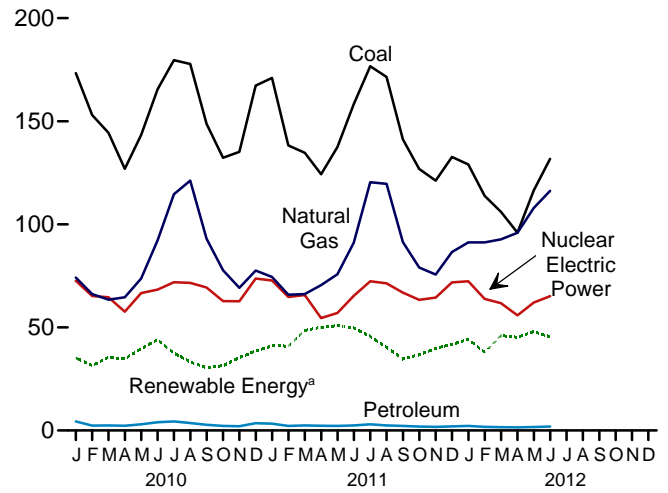


Figure 7.2 Electricity Net Generation
(Billion Kilowatthours)

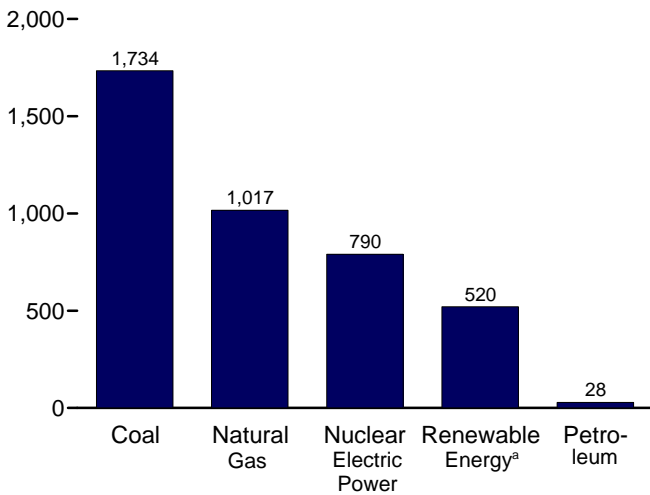
Total (All Sectors), Major Sources, 1989-2011



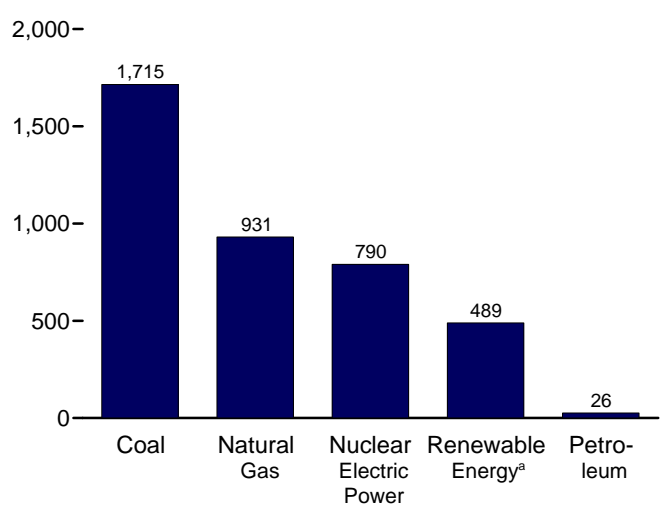
Total (All Sectors), Major Sources, Monthly



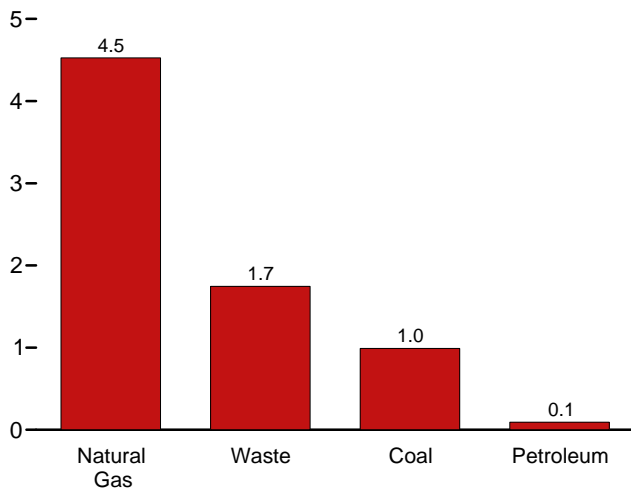
Total (All Sectors), Major Sources, 2011



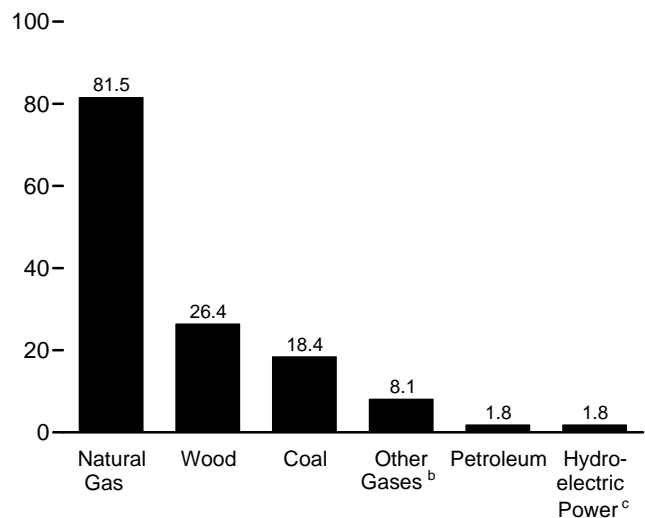
Electric Power Sector, Major Sources, 2011



Commercial Sector, Major Sources, 2011



Industrial Sector, Major Sources, 2011



^a Conventional hydroelectric power, wood, waste, geothermal, solar/PV, and wind.

^b Blast furnace gas, propane gas, and other manufactured and waste gases derived from fossil fuels.

^c Conventional hydroelectric power.

Web Page: <http://www.eia.gov/totalenergy/data/monthly/#electricity>.
Sources: Tables 7.2a-7.2c.