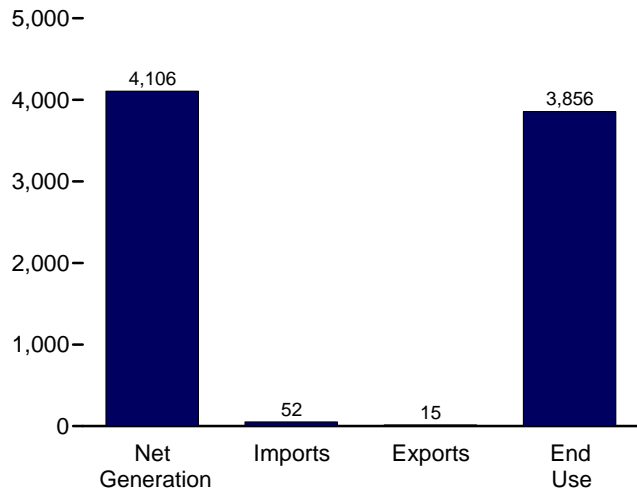


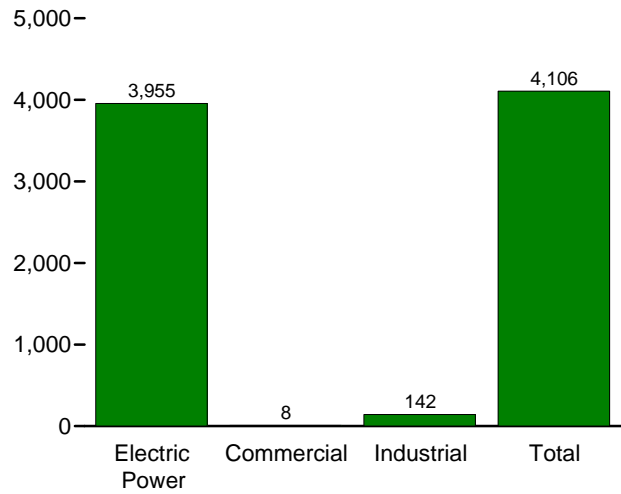
7. Electricity

Figure 7.1 Electricity Overview
(Billion Kilowatthours)

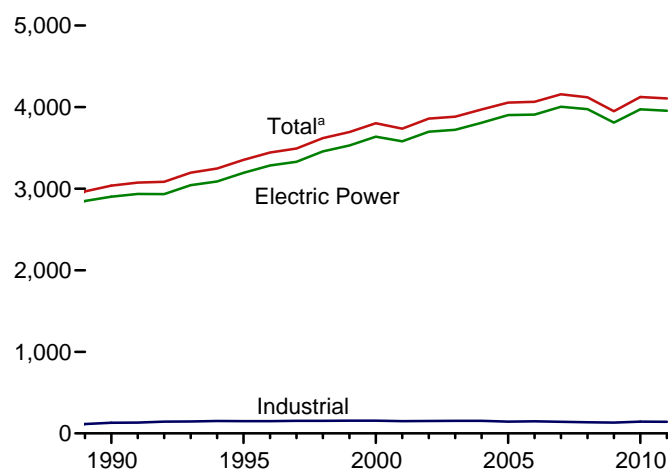
Overview, 2011



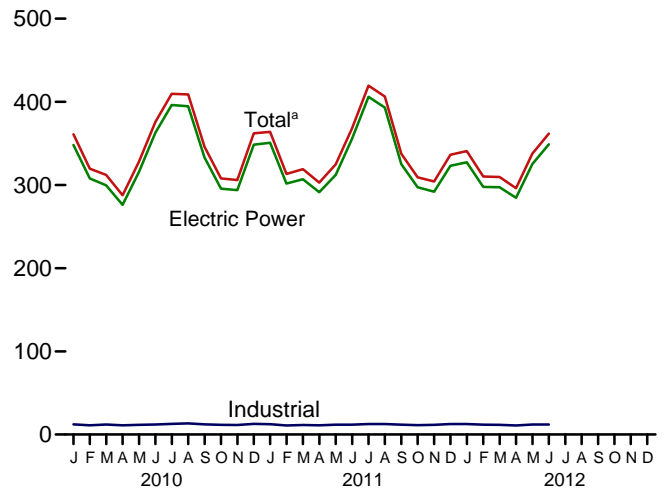
Net Generation, 2011



Net Generation by Sector, 1989-2011



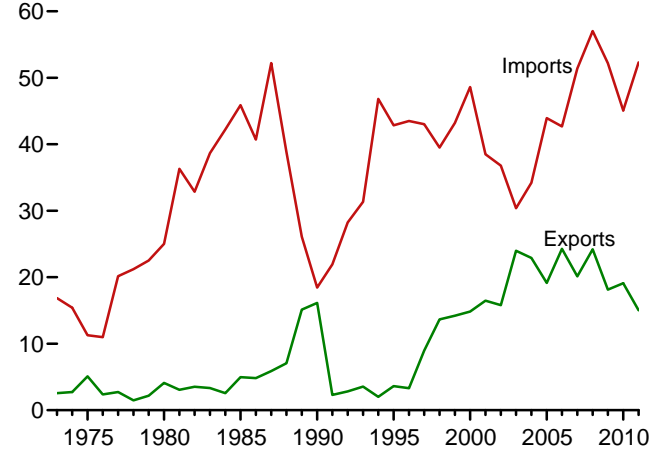
Net Generation by Sector, Monthly



End Use, 2011



Trade, 1973-2011



^a Includes commercial sector.

^b Electricity retail sales to ultimate customers reported by electric utilities and other energy service providers.

^c See "Direct Use" in Glossary.

Web Page: <http://www.eia.gov/totalenergy/data/monthly/#electricity>.
Source: Table 7.1.

Table 7.1 Electricity Overview
(Billion Kilowatthours)

	Net Generation				Trade			T&D Losses ^e and Unaccounted for ^f	End Use		
	Electric Power Sector ^a	Com- mercial Sector ^b	Indus- trial Sector ^c	Total	Imports ^d	Exports ^d	Net Imports ^d		Retail Sales ^g	Direct Use ^h	Total
1973 Total	1,861	NA	3	1,864	17	3	14	165	1,713	NA	1,713
1975 Total	1,918	NA	3	1,921	11	5	6	180	1,747	NA	1,747
1980 Total	2,286	NA	3	2,290	25	4	21	216	2,094	NA	2,094
1985 Total	2,470	NA	3	2,473	46	5	41	190	2,324	NA	2,324
1990 Total	2,901	6	131	3,038	18	16	2	203	2,713	125	2,837
1995 Total	3,194	8	151	3,353	43	4	39	229	3,013	151	3,164
1996 Total	3,284	9	151	3,444	43	3	40	231	3,101	153	3,254
1997 Total	3,329	9	154	3,492	43	9	34	224	3,146	156	3,302
1998 Total	3,457	9	154	3,620	40	14	26	221	3,264	161	3,425
1999 Total	3,530	9	156	3,695	43	14	29	240	3,312	172	3,484
2000 Total	3,638	8	157	3,802	49	15	34	244	3,421	171	3,592
2001 Total	3,580	7	149	3,737	39	16	22	202	3,394	163	3,557
2002 Total	3,698	7	153	3,858	37	16	21	248	3,465	166	3,632
2003 Total	3,721	7	155	3,883	30	24	6	228	3,494	168	3,662
2004 Total	3,808	8	154	3,971	34	23	11	266	3,547	168	3,716
2005 Total	3,902	8	145	4,055	44	19	25	269	3,661	150	3,811
2006 Total	3,908	8	148	4,065	43	24	18	266	3,670	147	3,817
2007 Total	4,005	8	143	4,157	51	20	31	298	3,765	126	3,890
2008 Total	3,974	8	137	4,119	57	24	33	287	3,733	132	3,865
2009 Total	3,810	8	132	3,950	52	18	34	261	3,597	127	3,724
2010 January	348	1	12	361	5	1	4	22	332	E 11	343
February	308	1	11	320	4	1	3	15	298	E 10	309
March	300	1	12	312	4	1	3	12	293	E 11	303
April	276	1	11	288	4	1	3	13	267	E 10	277
May	316	1	12	328	3	2	1	35	284	E 11	294
June	363	1	12	376	4	2	2	36	331	E 11	342
July	396	1	13	410	4	1	3	32	369	E 12	381
August	395	1	13	409	4	2	2	27	372	E 12	384
September	333	1	12	346	3	2	1	8	328	E 11	339
October	296	1	12	308	3	2	(s)	10	288	E 11	298
November	294	1	11	306	3	2	1	21	275	E 11	285
December	349	1	13	362	4	1	3	34	319	E 12	331
Total	3,972	9	144	4,125	45	19	26	265	3,754	132	3,886
2011 January	351	1	12	364	4	2	3	23	333	E 11	344
February	302	1	11	313	4	2	2	10	296	E 10	306
March	307	1	11	319	4	2	2	21	290	E 11	301
April	291	1	11	303	4	2	2	21	274	E 10	284
May	312	1	12	325	5	1	4	32	286	E 11	297
June	356	1	12	368	4	1	3	34	327	E 11	338
July	406	1	13	419	6	1	5	44	369	E 12	380
August	393	1	13	406	6	1	5	29	370	E 12	382
September	325	1	12	338	4	1	3	6	324	E 11	335
October	297	1	11	309	4	1	3	16	286	E 10	296
November	292	1	12	304	3	1	2	23	273	E 11	284
December	323	1	13	336	4	1	3	29	299	E 12	311
Total	3,955	8	142	4,106	52	15	37	287	3,726	E 130	3,856
2012 January	327	1	13	341	4	1	3	22	311	E 12	322
February	298	1	12	310	4	1	3	16	286	E 11	297
March	297	1	12	310	4	1	3	20	282	E 11	293
April	285	1	11	296	5	1	4	20	270	E 10	280
May	325	1	12	338	5	1	4	35	296	E 11	307
June	349	1	12	362	5	1	4	30	325	E 11	336
6-Month Total	1,881	4	71	1,956	28	7	21	143	1,770	E 65	1,835
2011 6-Month Total	1,919	4	70	1,992	25	9	16	140	1,805	E 64	1,869
2010 6-Month Total	1,910	4	70	1,984	25	8	17	133	1,804	E 64	1,868

^a Electricity-only and combined-heat-and-power (CHP) plants within the NAICS 22 category whose primary business is to sell electricity, or electricity and heat, to the public. Through 1988, data are for electric utilities only; beginning in 1989, data are for electric utilities and independent power producers.

^b Commercial combined-heat-and-power (CHP) and commercial electricity-only plants.

^c Industrial combined-heat-and-power (CHP) and industrial electricity-only plants. Through 1988, data are for industrial hydroelectric power only.

^d Electricity transmitted across U.S. borders. Net imports equal imports minus exports.

^e Transmission and distribution losses (electricity losses that occur between the point of generation and delivery to the customer). See Note 2, "Electrical System Energy Losses," at end of Section 2.

^f Data collection frame differences and nonsampling error.

^g Electricity retail sales to ultimate customers by electric utilities and, beginning in 1996, other energy service providers.

^h Use of electricity that is 1) self-generated, 2) produced by either the same entity that consumes the power or an affiliate, and 3) used in direct support of a service or industrial process located within the same facility or group of facilities that house the generating equipment. Direct use is exclusive of station use.

E=Estimate. NA=Not available. (s)=Less than 0.5 billion kilowatthours.

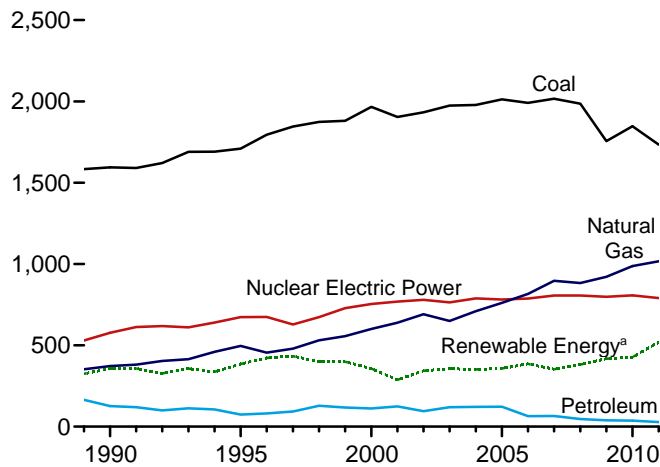
Notes: • See Note, "Classification of Power Plants Into Energy-Use Sectors," at end of section. • Totals may not equal sum of components due to independent rounding. • Geographic coverage is the 50 States and the District of Columbia.

Web Page: See <http://www.eia.gov/totalenergy/data/monthly/#electricity> for all available data beginning in 1973.

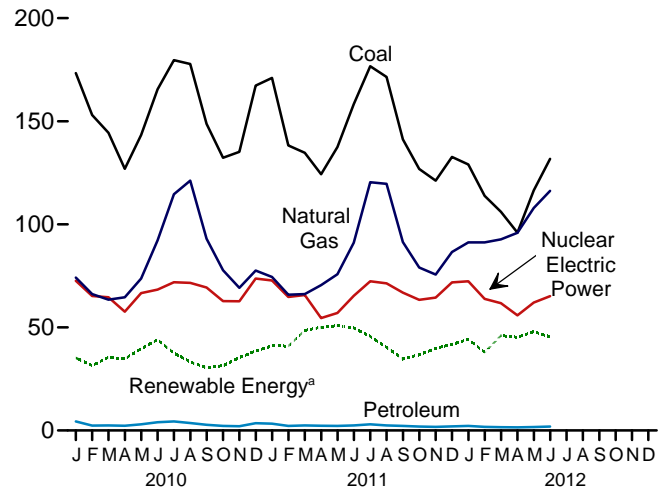
Sources: See end of section.

Figure 7.2 Electricity Net Generation
(Billion Kilowatthours)

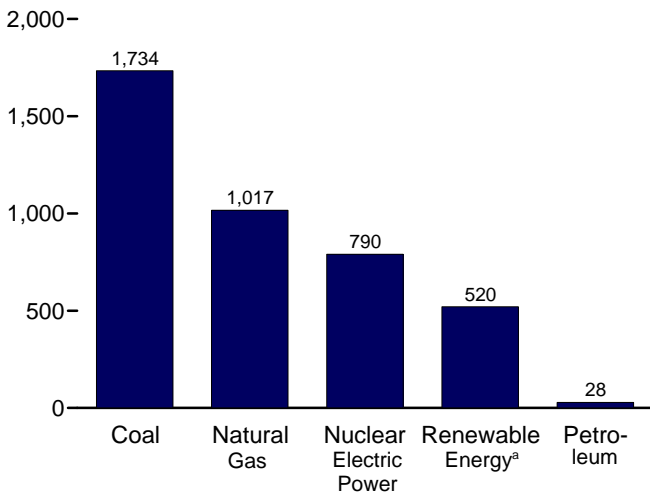
Total (All Sectors), Major Sources, 1989-2011



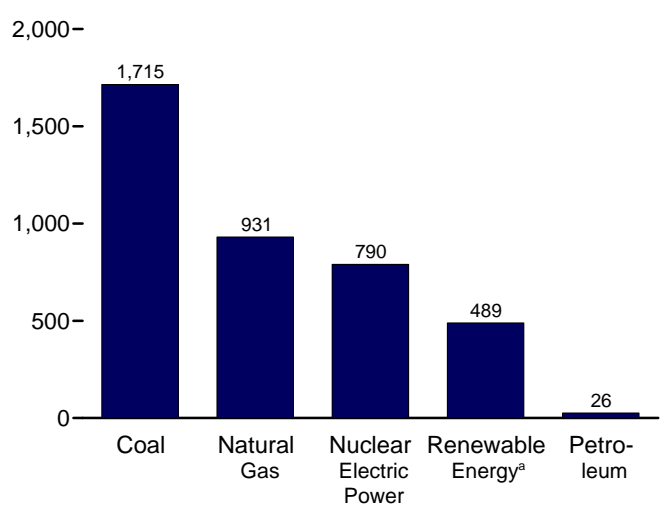
Total (All Sectors), Major Sources, Monthly



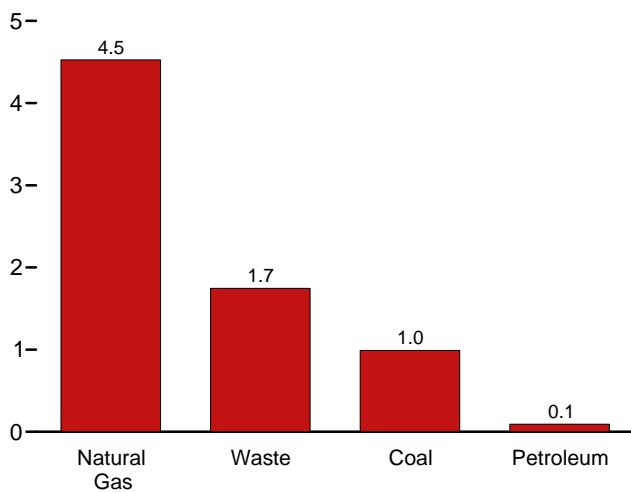
Total (All Sectors), Major Sources, 2011



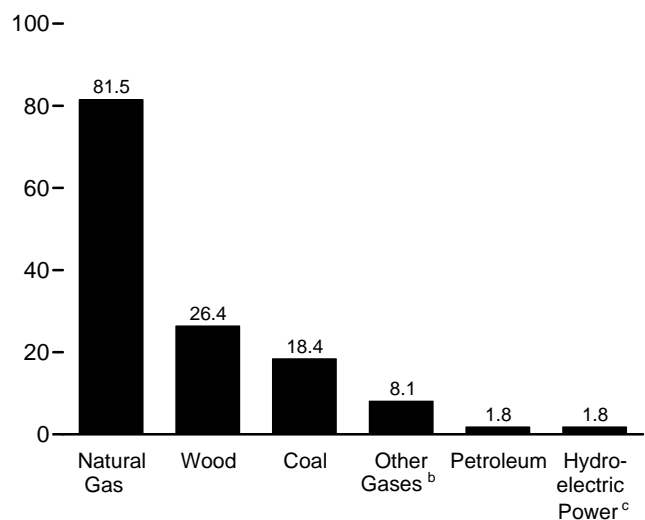
Electric Power Sector, Major Sources, 2011



Commercial Sector, Major Sources, 2011



Industrial Sector, Major Sources, 2011



^a Conventional hydroelectric power, wood, waste, geothermal, solar/PV, and wind.

^b Blast furnace gas, propane gas, and other manufactured and waste gases derived from fossil fuels.

^c Conventional hydroelectric power.

Web Page: <http://www.eia.gov/totalenergy/data/monthly/#electricity>.
Sources: Tables 7.2a-7.2c.

Table 7.2a Electricity Net Generation: Total (All Sectors)
(Sum of Tables 7.2b and 7.2c; Million Kilowatthours)

	Fossil Fuels				Nuclear Electric Power	Hydro-electric Pumped Storage ^e	Renewable Energy					Total	
	Coal ^a	Petroleum ^b	Natural Gas ^c	Other Gases ^d			Conventional Hydro-electric Power ^f	Biomass		Geo-thermal	Solar/PV ⁱ		Wind
								Wood ^g	Waste ^h				
1973 Total	847,651	314,343	340,858	NA	83,479	()	275,431	130	198	1,966	NA	NA	1,864,057
1975 Total	852,786	289,095	299,778	NA	172,505	()	303,153	18	174	3,246	NA	NA	1,920,755
1980 Total	1,161,562	245,994	346,240	NA	251,116	()	279,182	275	158	5,073	NA	NA	2,289,600
1985 Total	1,402,128	100,202	291,946	NA	383,691	()	284,311	743	640	9,325	11	6	2,473,002
1990 Total ^k	1,594,011	126,460	372,765	10,383	576,862	-3,508	292,866	32,522	13,260	15,434	367	2,789	3,037,827
1995 Total	1,709,426	74,554	496,058	13,870	673,402	-2,725	310,833	36,521	20,405	13,378	497	3,164	3,353,487
1996 Total	1,795,196	81,411	455,056	14,356	674,729	-3,088	347,162	36,800	20,911	14,329	521	3,234	3,444,188
1997 Total	1,845,016	92,555	479,399	13,351	628,644	-4,040	356,453	36,948	21,709	14,726	511	3,288	3,492,172
1998 Total	1,873,516	128,800	531,257	13,492	673,702	-4,467	323,336	36,338	22,448	14,774	502	3,026	3,620,295
1999 Total	1,881,087	118,061	556,396	14,126	728,254	-6,097	319,536	37,041	22,572	14,827	495	4,488	3,694,810
2000 Total	1,966,265	111,221	601,038	13,955	753,893	-5,539	275,573	37,595	23,131	14,093	493	5,593	3,902,105
2001 Total	1,903,956	124,880	639,129	9,939	768,826	-8,823	216,961	35,200	14,548	13,741	543	6,737	3,736,644
2002 Total	1,933,130	94,567	691,006	11,463	780,064	-8,743	264,329	38,665	15,044	14,491	555	10,354	3,558,452
2003 Total	1,973,737	119,406	649,908	15,600	763,733	-8,535	275,806	37,529	15,812	14,424	534	11,187	3,883,185
2004 Total	1,978,301	121,145	710,100	15,252	788,528	-8,488	268,417	38,117	15,421	14,811	575	14,144	3,970,555
2005 Total	2,012,873	122,225	760,960	13,464	781,986	-6,558	270,321	38,856	15,420	14,692	550	17,811	4,055,423
2006 Total	1,990,511	64,166	816,441	14,177	787,219	-6,558	289,246	38,762	16,099	14,568	508	26,589	4,064,702
2007 Total	2,016,456	65,739	896,590	13,453	806,425	-6,896	247,510	39,014	16,525	14,637	612	34,450	4,156,745
2008 Total	1,985,801	46,243	882,981	11,707	806,208	-6,288	254,831	37,300	17,734	14,840	864	55,363	4,119,388
2009 Total	1,755,904	38,937	920,979	10,632	798,855	-4,627	273,445	36,050	18,443	15,009	891	73,886	3,950,331
2010 January	173,320	4,348	74,173	909	72,569	-565	22,383	3,126	1,503	1,312	10	6,854	360,957
February	153,044	2,373	66,198	825	65,245	-351	20,590	2,895	1,382	1,159	33	5,432	319,735
March	144,406	2,470	63,431	1,010	64,635	-325	20,886	3,090	1,592	1,307	76	8,589	312,168
April	126,952	2,286	64,644	943	57,611	-335	19,097	2,932	1,558	1,240	112	9,764	287,800
May	143,272	2,994	73,665	1,017	66,658	-441	25,079	2,893	1,577	1,311	153	8,698	327,936
June	165,491	3,989	92,268	964	68,301	-472	29,854	3,094	1,627	1,264	176	8,049	375,759
July	179,600	4,411	114,624	963	71,913	-557	24,517	3,308	1,640	1,274	161	6,724	409,725
August	177,745	3,575	121,151	1,061	71,574	-600	20,119	3,319	1,642	1,297	156	6,686	408,884
September	148,746	2,783	93,004	954	69,371	-421	17,265	3,157	1,575	1,253	138	7,106	346,405
October	132,270	2,228	77,738	808	62,751	-438	17,683	3,003	1,547	1,222	75	7,944	307,921
November	135,185	2,079	69,227	907	62,655	-467	19,562	3,080	1,625	1,252	77	9,748	306,010
December	167,258	3,523	77,573	952	73,683	-530	23,169	3,275	1,650	1,330	44	9,059	362,119
Total	1,847,290	37,061	987,697	11,313	806,968	-5,501	260,203	37,172	18,917	15,219	1,212	94,652	4,125,060
2011 January	170,983	3,268	74,458	910	72,743	-426	26,148	3,258	1,503	1,478	31	8,659	363,855
February	138,295	2,201	65,852	770	64,789	-247	24,687	2,896	1,393	1,326	80	10,528	313,351
March	134,717	2,454	66,169	955	65,662	-350	31,737	3,041	1,655	1,465	113	10,537	319,092
April	124,293	2,279	70,529	913	54,547	-467	31,629	2,788	1,619	1,337	161	12,447	302,994
May	137,493	2,198	75,769	848	57,017	-419	33,105	2,802	1,702	1,438	201	11,635	324,757
June	158,308	2,439	91,096	980	65,270	-568	32,253	3,243	1,685	1,363	257	10,887	368,184
July	176,709	3,011	120,377	1,059	72,345	-709	31,570	3,348	1,767	1,372	226	7,382	419,480
August	171,472	2,407	119,646	999	71,339	-663	26,320	3,290	1,717	1,380	236	7,342	406,450
September	141,220	2,247	91,377	958	66,849	-554	21,500	3,113	1,621	1,334	183	6,883	337,606
October	126,872	1,934	79,078	949	63,354	-572	20,336	2,876	1,669	1,393	169	10,623	309,279
November	121,197	1,723	75,637	923	64,474	-441	21,074	2,980	1,689	1,377	78	12,354	304,268
December	132,706	2,000	86,606	1,005	71,837	-496	24,715	3,311	1,765	1,439	79	10,469	336,419
Total	1,734,265	28,162	1,016,595	11,269	790,225	-5,912	325,074	36,946	19,786	16,700	1,814	119,747	4,105,734
2012 January	129,064	2,232	91,213	1,096	72,382	-330	23,933	3,293	1,621	1,438	70	13,823	340,743
February	113,831	1,718	91,260	1,146	63,850	-226	20,813	3,029	1,523	1,361	119	11,047	310,298
March	106,032	1,576	92,739	1,023	61,730	-268	26,287	2,832	1,637	1,438	218	13,553	309,709
April	95,982	1,534	95,882	1,018	55,871	-242	26,748	2,515	1,643	1,354	307	12,611	296,101
May	116,476	1,677	107,928	1,034	62,081	-343	28,991	2,932	1,695	1,439	450	12,442	337,770
June	131,737	1,877	116,184	1,079	65,140	-487	27,074	2,984	1,657	1,394	500	11,740	361,790
6-Month Total	693,122	10,614	595,206	6,396	381,055	-1,897	153,846	17,585	9,776	8,424	1,664	75,216	1,956,410
2011 6-Month Total	864,090	14,839	443,873	5,375	380,028	-2,477	179,559	18,028	9,558	8,406	843	64,694	1,992,233
2010 6-Month Total	906,486	18,461	434,379	5,668	395,020	-2,488	137,888	18,030	9,238	7,592	560	47,386	1,984,356

^a Anthracite, bituminous coal, subbituminous coal, lignite, waste coal, and coal syrefuel.

^b Distillate fuel oil, residual fuel oil, petroleum coke, jet fuel, kerosene, other petroleum, and waste oil.

^c Natural gas, plus a small amount of supplemental gaseous fuels.

^d Blast furnace gas, propane gas, and other manufactured and waste gases derived from fossil fuels.

^e Pumped storage facility production minus energy used for pumping.

^f Through 1989, hydroelectric pumped storage is included in "Conventional Hydroelectric Power."

^g Wood and wood-derived fuels.

^h Municipal solid waste from biogenic sources, landfill gas, sludge waste, agricultural byproducts, and other biomass. Through 2000, also includes non-renewable waste (municipal solid waste from non-biogenic sources, and tire-derived fuels).

ⁱ Solar thermal and photovoltaic (PV) energy.

^j Includes batteries, chemicals, hydrogen, pitch, purchased steam, sulfur, miscellaneous technologies, and, beginning in 2001, non-renewable waste (municipal solid waste from non-biogenic sources, and tire-derived fuels).

^k Through 1988, all data except hydroelectric are for electric utilities only; hydroelectric data through 1988 include industrial plants as well as electric utilities. Beginning in 1989, data are for electric utilities, independent power producers, commercial plants, and industrial plants.

NA=Not available.

Notes: • Totals may not equal sum of components due to independent rounding. • Geographic coverage is the 50 States and the District of Columbia.

Web Page: See <http://www.eia.gov/totalenergy/data/monthly/#electricity> for all available data beginning in 1973.

Sources: See sources for Tables 7.2b and 7.2c.

Table 7.2b Electricity Net Generation: Electric Power Sector
(Subset of Table 7.2a; Million Kilowatthours)

	Fossil Fuels				Nuclear Electric Power	Hydro-electric Pumped Storage ^e	Renewable Energy					Total ^j	
	Coal ^a	Petroleum ^b	Natural Gas ^c	Other Gases ^d			Conventional Hydro-electric Power ^f	Biomass		Geo-thermal	Solar/PV ⁱ		Wind
								Wood ^g	Waste ^h				
1973 Total	847,651	314,343	340,858	NA	83,479	{ }	272,083	130	198	1,966	NA	NA	1,860,710
1975 Total	852,786	289,095	299,778	NA	172,505	{ }	300,047	18	174	3,246	NA	NA	1,917,649
1980 Total	1,161,562	245,994	346,240	NA	251,116	{ }	276,021	275	158	5,073	NA	NA	2,286,439
1985 Total	1,402,128	100,202	291,946	NA	383,691	{ }	281,149	743	640	9,325	11	6	2,469,841
1990 Total^k	1,572,109	118,864	309,486	621	576,862	-3,508	289,753	7,032	11,500	15,434	367	2,789	2,901,322
1995 Total	1,686,056	68,146	419,179	1,927	673,402	-2,725	305,410	7,597	17,986	13,378	497	3,164	3,194,230
1996 Total	1,771,973	74,783	378,757	1,341	674,729	-3,088	341,159	8,386	17,816	14,329	521	3,234	3,284,141
1997 Total	1,820,762	86,479	399,596	1,533	628,644	-4,040	350,648	8,680	18,485	14,726	511	3,288	3,329,375
1998 Total	1,850,193	122,211	449,293	2,315	673,702	-4,467	317,867	8,608	19,233	14,774	502	3,026	3,457,416
1999 Total	1,858,618	111,539	472,996	1,607	728,254	-6,097	314,663	8,961	19,493	14,827	495	4,488	3,529,982
2000 Total	1,943,111	105,192	517,978	2,028	753,893	-5,539	271,338	8,916	20,307	14,093	493	5,593	3,637,529
2001 Total	1,862,826	119,149	554,940	586	768,826	-8,823	213,749	8,294	12,944	13,741	543	6,737	3,580,053
2002 Total	1,910,613	89,733	607,683	1,970	780,064	-8,743	260,491	9,009	13,145	14,491	555	10,354	3,698,458
2003 Total	1,952,714	113,697	567,303	2,647	763,733	-8,535	271,512	9,528	13,808	14,424	534	11,187	3,721,159
2004 Total	1,967,188	114,678	627,172	3,568	788,528	-8,488	265,064	9,736	13,062	14,811	575	14,144	3,808,360
2005 Total	1,992,054	116,482	683,829	3,777	781,986	-6,558	267,040	10,570	13,031	14,692	550	17,811	3,902,192
2006 Total	1,969,737	59,708	734,417	4,254	787,219	-6,558	286,254	10,341	13,927	14,568	508	26,589	3,908,077
2007 Total	1,998,390	61,306	814,752	4,042	806,425	-6,896	245,843	10,711	14,294	14,637	612	34,450	4,005,343
2008 Total	1,968,838	42,881	802,372	3,200	806,208	-6,288	253,096	10,638	15,379	14,840	864	55,363	3,974,349
2009 Total	1,741,123	35,811	841,006	3,058	798,855	-4,627	271,506	10,738	15,954	15,009	891	73,886	3,809,837
2010													
January	171,660	4,111	66,847	275	72,569	-565	22,207	1,011	1,294	1,312	10	6,853	348,128
February	151,461	2,166	59,556	247	65,245	-351	20,421	926	1,207	1,159	33	5,431	307,994
March	142,665	2,299	56,492	275	64,635	-325	20,691	939	1,391	1,307	76	8,588	299,571
April	125,615	2,109	58,124	273	57,611	-335	18,898	837	1,334	1,240	112	9,763	276,121
May	141,669	2,801	66,862	279	66,658	-441	24,903	830	1,359	1,311	153	8,696	315,656
June	163,912	3,792	85,033	265	68,301	-472	29,711	955	1,409	1,264	175	8,048	362,985
July	177,778	4,199	106,961	267	71,913	-557	24,405	1,061	1,419	1,274	161	6,723	396,195
August	175,848	3,375	112,961	249	71,574	-600	20,019	1,074	1,413	1,297	156	6,685	394,651
September	147,157	2,608	85,498	240	69,371	-421	17,188	974	1,364	1,253	137	7,104	333,057
October	130,663	2,037	70,876	170	62,751	-438	17,561	887	1,330	1,222	75	7,942	295,646
November	133,815	1,879	62,305	219	62,655	-467	19,426	934	1,412	1,252	76	9,746	293,833
December	165,494	3,302	69,875	208	73,683	-530	23,024	1,018	1,443	1,330	43	9,058	348,549
Total	1,827,738	34,679	901,389	2,967	806,968	-5,501	258,455	11,446	16,376	15,219	1,206	94,636	3,972,386
2011													
January	169,157	3,056	67,038	247	72,743	-426	26,001	986	1,293	1,478	31	8,657	350,775
February	136,752	2,042	59,187	206	64,789	-247	24,517	873	1,204	1,326	79	10,525	301,735
March	133,163	2,282	59,350	250	65,662	-350	31,537	883	1,457	1,465	112	10,534	306,932
April	123,067	2,112	63,709	250	54,547	-467	31,422	674	1,439	1,337	160	12,444	291,282
May	135,794	2,053	68,567	250	57,017	-419	32,888	753	1,467	1,438	199	11,632	312,220
June	156,677	2,276	84,032	282	65,270	-568	32,097	921	1,470	1,363	254	10,884	355,569
July	174,850	2,840	112,765	296	72,345	-709	31,442	1,042	1,537	1,372	223	7,380	406,019
August	169,572	2,243	111,991	293	71,339	-663	26,217	1,020	1,481	1,380	233	7,339	393,059
September	139,458	2,075	84,392	287	66,849	-554	21,375	896	1,395	1,334	181	6,880	325,121
October	125,200	1,792	72,407	279	63,354	-572	19,905	752	1,444	1,393	167	10,618	297,294
November	119,867	1,597	68,418	242	64,474	-441	21,222	753	1,457	1,377	77	12,348	291,954
December	131,311	1,857	78,714	266	71,837	-496	24,520	951	1,538	1,439	79	10,464	323,103
Total	1,714,870	26,223	930,568	3,148	790,225	-5,912	323,141	10,504	17,182	16,700	1,795	119,704	3,955,065
2012													
January	127,430	1,940	83,532	422	72,382	-330	23,749	949	1,388	1,438	69	13,814	327,388
February	112,361	1,524	83,904	422	63,850	-226	20,649	875	1,295	1,361	117	11,040	297,729
March	104,552	1,375	85,611	275	61,730	-268	26,090	829	1,422	1,438	211	13,543	297,419
April	94,891	1,322	89,010	242	55,871	-242	26,580	628	1,418	1,354	297	12,602	284,567
May	115,362	1,496	100,315	271	62,081	-343	28,797	780	1,447	1,439	435	12,434	325,131
June	130,559	1,669	108,443	387	65,140	-487	26,933	852	1,269	1,394	484	11,679	348,812
6-Month Total	685,155	9,325	550,815	2,019	381,055	-1,897	152,798	4,913	8,239	8,424	1,613	75,112	1,881,046
2011 6-Month Total	854,611	13,821	401,883	1,484	380,028	-2,477	178,461	5,091	8,331	8,406	835	64,675	1,918,514
2010 6-Month Total	896,982	17,278	392,913	1,614	395,020	-2,488	136,832	5,498	7,995	7,592	559	47,378	1,910,454

^a Anthracite, bituminous coal, subbituminous coal, lignite, waste coal, and coal symfuel.

^b Distillate fuel oil, residual fuel oil, petroleum coke, jet fuel, kerosene, other petroleum, and waste oil.

^c Natural gas, plus a small amount of supplemental gaseous fuels.

^d Blast furnace gas, propane gas, and other manufactured and waste gases derived from fossil fuels.

^e Pumped storage facility production minus energy used for pumping.

^f Through 1989, hydroelectric pumped storage is included in "Conventional Hydroelectric Power."

^g Wood and wood-derived fuels.

^h Municipal solid waste from biogenic sources, landfill gas, sludge waste, agricultural byproducts, and other biomass. Through 2000, also includes non-renewable waste (municipal solid waste from non-biogenic sources, and tire-derived fuels).

ⁱ Solar thermal and photovoltaic (PV) energy.

^j Includes batteries, chemicals, hydrogen, pitch, purchased steam, sulfur, miscellaneous technologies, and, beginning in 2001, non-renewable waste (municipal solid waste from non-biogenic sources, and tire-derived fuels).

^k Through 1988, data are for electric utilities only. Beginning in 1989, data are for electric utilities and independent power producers.

NA=Not available.

Notes: • The electric power sector comprises electricity-only and combined-heat-and-power (CHP) plants within the NAICS 22 category whose primary business is to sell electricity, or electricity and heat, to the public. • Totals may not equal sum of components due to independent rounding. • Geographic coverage is the 50 States and the District of Columbia.

Web Page: See <http://www.eia.gov/totalenergy/data/monthly/#electricity> for all available data beginning in 1973.

Sources: See end of section.

Table 7.2c Electricity Net Generation: Commercial and Industrial Sectors
(Subset of Table 7.2a; Million Kilowatthours)

	Commercial Sector ^a					Industrial Sector ^b							
	Coal ^c	Petroleum ^d	Natural Gas ^e	Biomass	Total ^g	Coal ^c	Petroleum ^d	Natural Gas ^e	Other Gases ^h	Hydro-electric Power ⁱ	Biomass		Total ^k
				Waste ^f							Wood ^j	Waste ^f	
1973 Total	NA	NA	NA	NA	NA	NA	NA	NA	NA	3,347	NA	NA	3,347
1975 Total	NA	NA	NA	NA	NA	NA	NA	NA	NA	3,106	NA	NA	3,106
1980 Total	NA	NA	NA	NA	NA	NA	NA	NA	NA	3,161	NA	NA	3,161
1985 Total	NA	NA	NA	NA	NA	NA	NA	NA	NA	3,161	NA	NA	3,161
1990 Total	796	589	3,272	812	5,837	21,107	7,008	60,007	9,641	2,975	25,379	949	130,830
1995 Total	998	379	5,162	1,519	8,232	22,372	6,030	71,717	11,943	5,304	28,868	900	151,025
1996 Total	1,051	369	5,249	2,176	9,030	22,172	6,260	71,049	13,015	5,878	28,354	919	151,017
1997 Total	1,040	427	4,725	2,342	8,701	23,214	5,649	75,078	11,814	5,685	28,225	882	154,097
1998 Total	985	383	4,879	2,335	8,748	22,337	6,206	77,085	11,170	5,349	27,693	880	154,132
1999 Total	995	434	4,607	2,393	8,563	21,474	6,088	78,793	12,519	4,758	28,060	686	156,264
2000 Total	1,097	432	4,262	1,985	7,903	22,056	5,597	78,798	11,927	4,135	28,652	839	156,673
2001 Total	995	438	4,434	1,007	7,416	20,135	5,293	79,755	8,454	3,145	26,888	596	149,175
2002 Total	992	431	4,310	1,053	7,415	21,525	4,403	79,013	9,493	3,825	29,643	846	152,580
2003 Total	1,206	423	3,899	1,289	7,496	19,817	5,285	78,705	12,953	4,222	27,988	715	154,530
2004 Total	1,340	499	3,969	1,562	8,270	19,773	5,967	78,959	11,684	3,248	28,367	797	153,925
2005 Total	1,353	375	4,249	1,657	8,492	19,466	5,368	72,882	9,687	3,195	28,271	733	144,739
2006 Total	1,310	235	4,355	1,599	8,371	19,464	4,223	77,669	9,923	2,899	28,400	572	148,254
2007 Total	1,371	189	4,257	1,599	8,273	16,694	4,243	77,580	9,411	1,590	28,287	631	143,128
2008 Total	1,261	142	4,188	1,534	7,926	15,703	3,219	76,421	8,507	1,676	26,641	821	137,113
2009 Total	1,096	163	4,225	1,748	8,165	13,686	2,963	75,748	7,574	1,868	25,292	740	132,329
2010													
January	116	13	367	137	709	1,544	225	6,959	634	169	2,114	72	12,120
February	102	11	339	111	623	1,481	197	6,303	578	162	1,967	64	11,118
March	91	8	351	134	661	1,649	163	6,588	735	188	2,149	67	11,936
April	80	9	326	144	645	1,258	169	6,194	669	187	2,094	80	11,034
May	84	12	326	149	666	1,519	181	6,477	738	164	2,061	69	11,614
June	97	10	350	150	699	1,482	187	6,885	700	132	2,137	68	12,075
July	110	18	459	146	812	1,713	194	7,205	696	107	2,246	75	12,718
August	105	11	490	152	838	1,792	189	7,701	812	99	2,243	78	13,395
September	89	9	421	148	750	1,499	165	7,085	713	76	2,182	62	12,238
October	80	7	419	133	712	1,527	184	6,443	637	117	2,114	84	11,562
November	69	4	401	134	683	1,301	196	6,520	688	130	2,145	79	11,493
December	88	12	476	136	793	1,677	209	7,223	744	134	2,255	71	12,777
Total	1,111	124	4,725	1,672	8,592	18,441	2,258	81,583	8,343	1,668	25,706	869	144,082
2011													
January	103	13	402	139	739	1,723	198	7,017	663	137	2,271	71	12,341
February	95	8	350	125	656	1,447	151	6,314	564	160	2,021	64	10,961
March	97	7	341	134	666	1,457	165	6,478	705	188	2,156	65	11,494
April	71	5	347	118	622	1,155	162	6,473	662	196	2,112	62	11,089
May	77	6	373	160	714	1,622	140	6,829	597	208	2,047	74	11,822
June	82	8	368	144	693	1,549	155	6,696	698	147	2,321	71	11,921
July	96	13	431	155	791	1,763	158	7,181	762	118	2,304	76	12,669
August	86	7	408	160	752	1,814	157	7,248	706	100	2,268	76	12,639
September	76	6	356	150	674	1,686	166	6,629	670	123	2,215	76	11,811
October	63	8	359	153	668	1,609	135	6,312	669	126	2,123	72	11,317
November	64	6	378	155	691	1,266	121	6,841	680	147	2,226	77	11,623
December	78	6	413	154	739	1,317	138	7,480	738	188	2,359	73	12,577
Total	989	93	4,526	1,746	8,403	18,406	1,846	81,500	8,115	1,838	26,422	858	142,266
2012													
January	83	6	387	163	698	1,552	286	7,295	673	182	2,343	70	12,657
February	82	4	357	163	665	1,388	190	6,999	723	163	2,152	65	11,904
March	68	4	363	155	658	1,412	197	6,765	747	195	2,001	60	11,633
April	49	6	359	159	639	1,041	206	6,513	775	166	1,885	65	10,895
May	67	6	364	174	686	1,048	176	7,249	762	192	2,151	74	11,952
June	64	10	453	316	1,034	1,114	198	7,287	691	138	2,131	71	11,944
6-Month Total	413	36	2,282	1,131	4,380	7,553	1,253	42,110	4,372	1,035	12,662	407	70,985
2011 6-Month Total	526	47	2,181	820	4,090	8,952	971	39,808	3,890	1,037	12,928	408	69,629
2010 6-Month Total	571	63	2,060	824	4,003	8,933	1,121	39,406	4,053	1,004	12,522	420	69,898

^a Commercial combined-heat-and-power (CHP) and commercial electricity-only plants.

^b Industrial combined-heat-and-power (CHP) and industrial electricity-only plants.

^c Anthracite, bituminous coal, subbituminous coal, lignite, waste coal, and coal symfuel.

^d Distillate fuel oil, residual fuel oil, petroleum coke, jet fuel, kerosene, other petroleum, and waste oil.

^e Natural gas, plus a small amount of supplemental gaseous fuels.

^f Municipal solid waste from biogenic sources, landfill gas, sludge waste, agricultural byproducts, and other biomass. Through 2000, also includes non-renewable waste (municipal solid waste from non-biogenic sources, and tire-derived fuels).

^g Includes a small amount of conventional hydroelectric power, other gases, photovoltaic (PV) energy, wind, wood, and other, which are not separately displayed.

^h Blast furnace gas, propane gas, and other manufactured and waste gases derived from fossil fuels.

ⁱ Conventional hydroelectric power.

^j Wood and wood-derived fuels.

^k Includes photovoltaic (PV) energy, wind, batteries, chemicals, hydrogen, pitch, purchased steam, sulfur, miscellaneous technologies, and, beginning in 2001, non-renewable waste (municipal solid waste from non-biogenic sources, and tire-derived fuels).

NA=Not available.

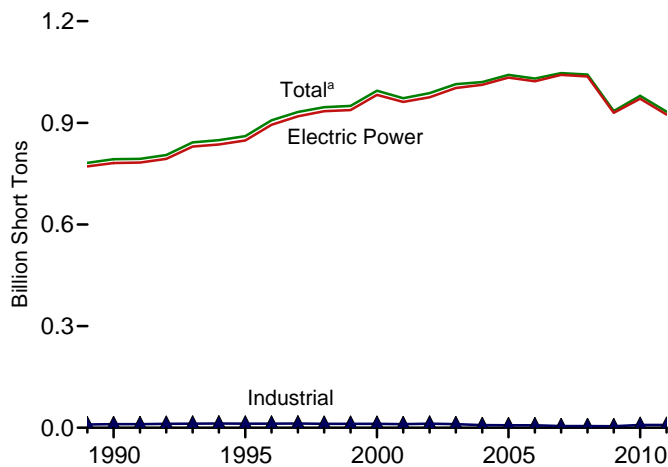
Notes: • See Note, "Classification of Power Plants Into Energy-Use Sectors," at end of section. • Totals may not equal sum of components due to independent rounding. • Geographic coverage is the 50 States and the District of Columbia.

Web Page: See <http://www.eia.gov/totalenergy/data/monthly/#electricity> for all available data beginning in 1973.

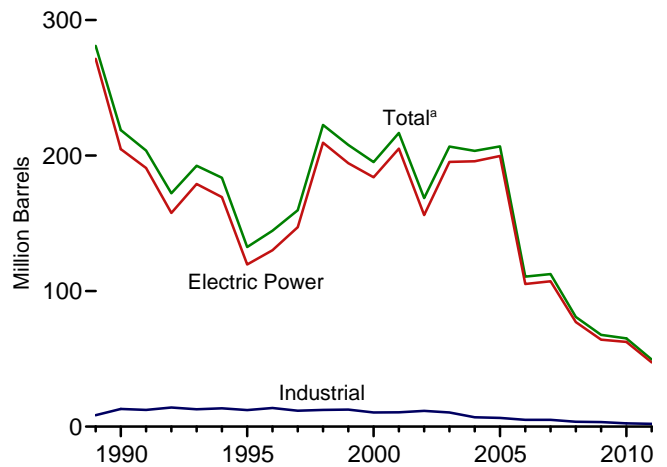
Sources: See end of section.

Figure 7.3 Consumption of Selected Combustible Fuels for Electricity Generation

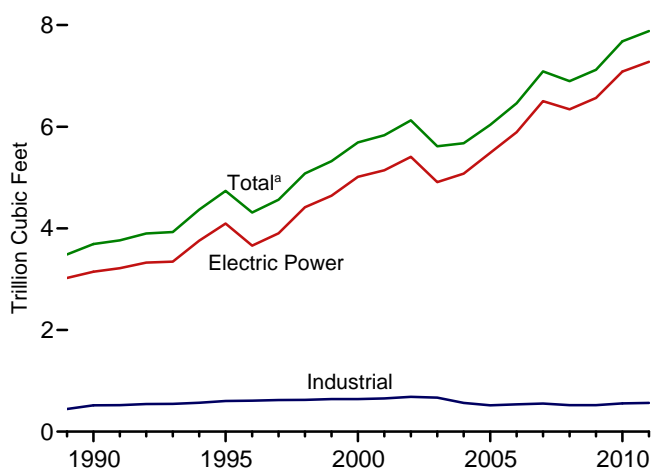
Coal by Sector, 1989-2011



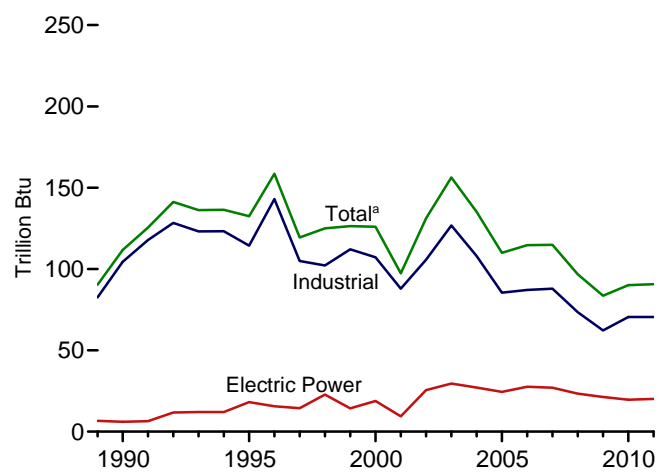
Petroleum by Sector, 1989-2011



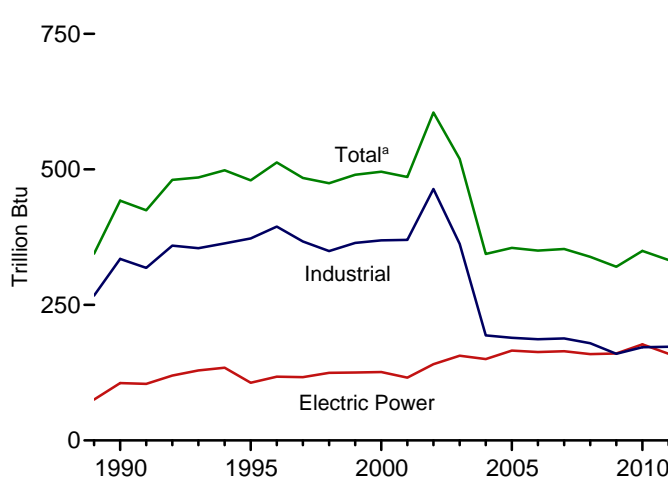
Natural Gas by Sector, 1989-2011



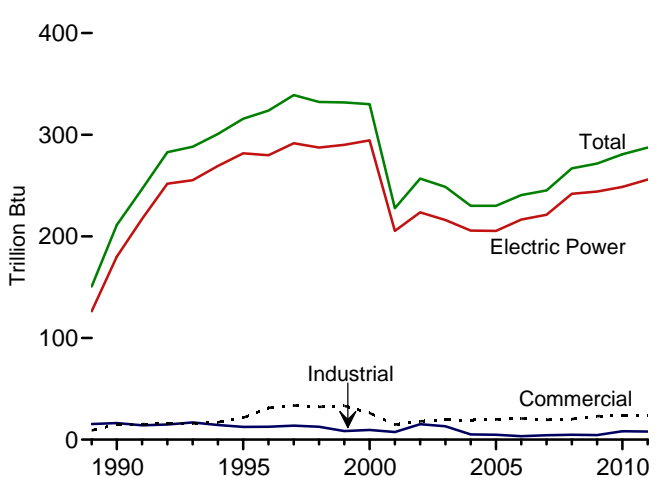
Other Gases^b by Sector, 1989-2011



Wood by Sector, 1989-2011



Waste by Sector, 1989-2011



^a Includes commercial sector.

^b Blast furnace gas, propane gas, and other manufactured and waste gases derived from fossil fuels.

Web Page: <http://www.eia.gov/totalenergy/data/monthly/#electricity>.
Sources: Tables 7.3a-7.3c.

Table 7.3a Consumption of Combustible Fuels for Electricity Generation: Total (All Sectors) (Sum of Tables 7.3b and 7.3c)

	Coal ^a	Petroleum					Natural Gas ^f	Other Gases ^g	Biomass		Other ⁱ
		Distillate Fuel Oil ^b	Residual Fuel Oil ^c	Other Liquids ^d	Petroleum Coke ^e	Total ^e			Wood ^h	Waste ⁱ	
		Thousand Short Tons	Thousand Barrels			Thousand Short Tons			Thousand Barrels	Billion Cubic Feet	
1973 Total	389,212	47,058	513,190	NA	507	562,781	3,660	NA	1	2	NA
1975 Total	405,962	38,907	467,221	NA	70	506,479	3,158	NA	(s)	2	NA
1980 Total	569,274	29,051	391,163	NA	179	421,110	3,682	NA	3	2	NA
1985 Total	693,841	14,635	158,779	NA	231	174,571	3,044	NA	8	7	NA
1990 Total ^k	792,457	18,143	190,652	437	1,914	218,800	3,692	112	442	211	36
1995 Total	860,594	19,615	95,507	680	3,355	132,578	4,738	133	480	316	42
1996 Total	907,209	20,252	106,055	1,712	3,322	144,626	4,312	159	513	324	37
1997 Total	931,949	20,309	118,741	237	4,086	159,715	4,565	119	484	339	36
1998 Total	946,295	25,062	172,728	549	4,860	222,640	5,081	125	475	332	36
1999 Total	949,802	25,951	158,187	974	4,552	207,871	5,322	126	490	332	41
2000 Total	994,933	31,675	143,381	1,450	3,744	195,228	5,691	126	496	330	46
2001 Total	972,691	31,150	165,312	855	3,871	216,672	5,832	97	486	228	160
2002 Total	987,583	23,286	109,235	1,894	6,836	168,597	6,126	131	605	257	191
2003 Total	1,014,058	29,672	142,518	2,947	6,303	206,653	5,616	156	519	249	193
2004 Total	1,020,523	20,163	142,088	2,856	7,677	203,494	5,675	135	344	230	183
2005 Total	1,041,448	20,651	141,518	2,968	8,330	206,785	6,036	110	355	230	173
2006 Total	1,030,556	13,174	58,473	2,174	7,363	110,634	6,462	115	350	241	172
2007 Total	1,046,795	15,683	63,833	2,917	6,036	112,615	7,089	115	353	245	168
2008 Total	1,042,335	12,832	38,191	2,822	5,417	80,932	6,896	97	339	267	172
2009 Total	934,683	12,658	28,576	2,328	4,821	67,668	7,121	84	320	272	170
2010 January	90,767	2,485	2,860	241	433	7,751	570	7	30	22	15
February	80,209	869	1,075	212	404	4,174	502	6	28	20	13
March	76,544	785	1,245	147	438	4,370	479	8	29	24	15
April	67,037	726	1,160	126	382	3,923	494	8	27	23	15
May	76,061	1,050	1,997	121	415	5,244	582	8	27	24	15
June	87,395	1,244	3,087	154	493	6,950	731	8	29	24	16
July	94,993	1,347	3,681	200	524	7,849	923	8	31	24	16
August	94,786	1,093	2,987	164	423	6,358	972	8	32	24	16
September	79,573	905	1,789	151	394	4,813	723	8	30	23	16
October	70,918	787	1,113	129	362	3,840	594	6	28	23	15
November	72,756	876	982	143	317	3,588	519	7	29	24	15
December	88,645	1,883	2,021	266	408	6,210	591	8	31	24	16
Total	979,684	14,050	23,997	2,056	4,994	65,071	7,680	90	350	281	184
2011 January	90,106	1,238	1,700	231	526	5,802	564	7	30	22	12
February	73,505	854	1,007	124	387	3,919	503	6	27	21	11
March	72,340	839	1,122	133	465	4,421	504	7	28	24	14
April	66,870	957	1,328	121	304	3,924	548	7	24	23	13
May	73,511	909	1,222	110	316	3,820	603	7	25	24	14
June	84,072	969	1,261	145	388	4,316	729	8	29	25	14
July	94,214	1,161	1,542	167	479	5,265	966	8	30	26	15
August	92,177	809	1,333	122	415	4,341	948	8	30	25	14
September	76,612	778	958	162	392	3,861	710	8	28	24	13
October	69,524	711	940	124	307	3,311	600	8	26	24	13
November	66,789	715	904	135	250	3,002	568	8	26	24	13
December	73,190	835	927	134	331	3,551	639	8	30	25	14
Total	932,911	10,775	14,246	1,707	4,561	49,533	7,880	91	333	287	162
2012 January	70,595	772	988	135	414	3,964	676	9	30	23	14
February	62,802	649	753	108	314	3,079	672	9	28	22	12
March	57,564	579	869	120	251	2,825	704	9	26	24	13
April	51,574	734	797	126	204	2,675	744	8	25	24	13
May	62,958	854	838	141	234	3,006	843	8	28	25	14
June	71,698	854	1,295	133	225	3,410	910	9	29	24	14
6-Month Total	377,191	4,443	5,541	763	1,642	18,959	4,550	52	167	141	80
2011 6-Month Total	460,405	5,766	7,641	864	2,386	26,203	3,451	43	163	139	79
2010 6-Month Total	478,013	7,160	11,424	1,002	2,565	32,412	3,358	46	170	137	89

^a Anthracite, bituminous coal, subbituminous coal, lignite, waste coal, and coal synfuel.

^b Fuel oil nos. 1, 2, and 4. For 1973-1979, data are for gas turbine and internal combustion plant use of petroleum. For 1980-2000, electric utility data also include small amounts of kerosene and jet fuel.

^c Fuel oil nos. 5 and 6. For 1973-1979, data are for steam plant use of petroleum. For 1980-2000, electric utility data also include a small amount of fuel oil no. 4.

^d Jet fuel, kerosene, other petroleum liquids, and waste oil.

^e Petroleum coke is converted from short tons to barrels by multiplying by 5.

^f Natural gas, plus a small amount of supplemental gaseous fuels.

^g Blast furnace gas, propane gas, and other manufactured and waste gases derived from fossil fuels.

^h Wood and wood-derived fuels.

ⁱ Municipal solid waste from biogenic sources, landfill gas, sludge waste, agricultural byproducts, and other biomass. Through 2000, also includes non-renewable waste (municipal solid waste from non-biogenic sources, and

tire-derived fuels).

^j Batteries, chemicals, hydrogen, pitch, purchased steam, sulfur, miscellaneous technologies, and, beginning in 2001, non-renewable waste (municipal solid waste from non-biogenic sources, and tire-derived fuels).

^k Through 1988, data are for electric utilities only. Beginning in 1989, data are for electric utilities, independent power producers, commercial plants, and industrial plants.

NA=Not available. (s)=Less than 0.5 trillion Btu.

Notes: • Data are for fuels consumed to produce electricity. Data also include fuels consumed to produce useful thermal output at a small number of electric utility combined-heat-and-power (CHP) plants. • Totals may not equal sum of components due to independent rounding. • Geographic coverage is the 50 States and the District of Columbia.

Web Page: See <http://www.eia.gov/totalenergy/data/monthly/#electricity> for all available data beginning in 1973.

Sources: See sources for Tables 7.3b and 7.3c.

Table 7.3b Consumption of Combustible Fuels for Electricity Generation: Electric Power Sector (Subset of Table 7.3a)

	Coal ^a Thousand Short Tons	Petroleum					Natural Gas ^f Billion Cubic Feet	Other Gases ^g	Biomass		Other ⁱ
		Distillate Fuel Oil ^b Thousand Barrels	Residual Fuel Oil ^c Thousand Barrels	Other Liquids ^d	Petroleum Coke ^e Thousand Short Tons	Total ^e Thousand Barrels			Wood ^h	Waste ⁱ	
1973 Total	389,212	47,058	513,190	NA	507	562,781	3,660	NA	1	2	NA
1975 Total	405,962	38,907	467,221	NA	70	506,479	3,158	NA	(s)	2	NA
1980 Total	569,274	29,051	391,163	NA	179	421,110	3,682	NA	3	2	NA
1985 Total	693,841	14,635	158,779	NA	231	174,571	3,044	NA	8	7	NA
1990 Total ^k	781,301	16,394	183,285	25	1,008	204,745	3,147	6	106	180	(s)
1995 Total	847,854	18,066	88,895	441	2,452	119,663	4,094	18	106	282	2
1996 Total	894,400	18,472	98,795	567	2,467	130,168	3,660	16	117	280	2
1997 Total	919,009	18,646	112,423	130	3,201	147,202	3,903	14	117	292	1
1998 Total	934,126	23,166	165,875	411	3,999	209,447	4,416	23	125	287	2
1999 Total	937,888	23,875	151,921	514	3,607	194,345	4,644	14	125	290	1
2000 Total	982,713	29,722	138,047	403	3,155	183,946	5,014	19	126	294	1
2001 Total	961,523	29,056	159,150	374	3,308	205,119	5,142	9	116	205	109
2002 Total	975,251	21,810	104,577	1,243	5,705	156,154	5,408	25	141	224	137
2003 Total	1,003,036	27,441	137,361	1,937	5,719	195,336	4,909	30	156	216	136
2004 Total	1,012,459	18,793	138,831	2,511	7,135	195,809	5,075	27	150	206	131
2005 Total	1,033,567	19,450	138,337	2,591	7,877	199,760	5,485	24	166	205	116
2006 Total	1,022,802	12,578	56,347	1,783	6,905	105,235	5,891	28	163	216	117
2007 Total	1,041,346	15,135	62,072	2,496	5,523	107,316	6,502	27	165	221	117
2008 Total	1,036,891	12,318	37,222	2,608	5,000	77,149	6,342	23	159	242	122
2009 Total	929,692	11,848	27,768	2,110	4,485	64,151	6,567	21	160	244	115
2010											
January	90,080	2,441	2,804	219	404	7,482	519	2	16	20	9
February	79,537	833	1,023	196	379	3,946	456	2	15	18	8
March	75,772	756	1,214	130	415	4,176	432	2	15	21	9
April	66,559	695	1,132	112	360	3,741	449	2	14	20	9
May	75,311	1,021	1,964	104	390	5,040	536	2	13	21	10
June	86,725	1,220	3,059	137	463	6,733	681	2	15	21	10
July	94,194	1,306	3,643	185	495	7,610	869	2	16	22	10
August	93,922	1,066	2,962	149	392	6,136	915	2	16	22	10
September	78,881	880	1,760	136	371	4,628	671	1	15	21	10
October	70,205	762	1,076	112	337	3,634	547	1	13	20	10
November	72,206	849	949	125	290	3,373	473	1	15	21	10
December	87,854	1,847	1,973	244	383	5,978	538	1	16	22	10
Total	971,245	13,677	23,560	1,848	4,679	62,477	7,085	20	177	249	116
2011											
January	89,305	1,215	1,653	223	495	5,564	512	1	15	20	9
February	72,814	832	973	117	365	3,750	457	1	14	18	8
March	71,671	822	1,093	121	440	4,234	457	1	13	22	10
April	66,411	936	1,296	104	282	3,747	500	2	11	21	10
May	72,742	891	1,199	103	295	3,670	551	2	12	22	10
June	83,360	946	1,236	129	364	4,134	679	2	14	22	10
July	93,388	1,135	1,518	158	452	5,069	912	2	15	23	11
August	91,340	788	1,311	107	389	4,152	894	2	15	22	10
September	75,820	756	940	126	369	3,670	661	2	13	21	10
October	68,779	686	911	119	288	3,155	553	2	12	21	10
November	66,260	693	883	129	233	2,871	518	2	12	21	10
December	72,633	811	899	128	309	3,382	584	2	15	22	10
Total	924,523	10,513	13,914	1,564	4,281	47,398	7,279	20	160	256	117
2012											
January	69,864	754	961	124	331	3,497	623	3	15	21	10
February	62,146	635	728	97	263	2,775	623	3	14	19	9
March	56,908	563	849	111	201	2,528	655	2	13	21	10
April	51,168	713	776	102	154	2,360	697	2	10	21	10
May	62,595	837	811	134	187	2,717	790	2	12	22	11
June	71,305	827	1,278	117	176	3,102	856	3	13	19	8
6-Month Total	373,986	4,330	5,402	685	1,313	16,981	4,243	14	75	123	59
2011 6-Month Total	456,303	5,643	7,451	797	2,242	25,099	3,156	9	78	124	57
2010 6-Month Total	473,984	6,966	11,197	898	2,411	31,118	3,072	11	86	122	56

^a Anthracite, bituminous coal, subbituminous coal, lignite, waste coal, and coal syngas.

^b Fuel oil nos. 1, 2, and 4. For 1973-1979, data are for gas turbine and internal combustion plant use of petroleum. For 1980-2000, electric utility data also include small amounts of kerosene and jet fuel.

^c Fuel oil nos. 5 and 6. For 1973-1979, data are for steam plant use of petroleum. For 1980-2000, electric utility data also include a small amount of fuel oil no. 4.

^d Jet fuel, kerosene, other petroleum liquids, and waste oil.

^e Petroleum coke is converted from short tons to barrels by multiplying by 5.

^f Natural gas, plus a small amount of supplemental gaseous fuels.

^g Blast furnace gas, propane gas, and other manufactured and waste gases derived from fossil fuels.

^h Wood and wood-derived fuels.

ⁱ Municipal solid waste from biogenic sources, landfill gas, sludge waste, agricultural byproducts, and other biomass. Through 2000, also includes non-renewable waste (municipal solid waste from non-biogenic sources, and

tire-derived fuels).

^j Batteries, chemicals, hydrogen, pitch, purchased steam, sulfur, miscellaneous technologies, and, beginning in 2001, non-renewable waste (municipal solid waste from non-biogenic sources, and tire-derived fuels).

^k Through 1988, data are for electric utilities only. Beginning in 1989, data are for electric utilities and independent power producers.

NA=Not available. (s)=Less than 0.5 trillion Btu.

Notes: • Data are for fuels consumed to produce electricity. Data also include fuels consumed to produce useful thermal output at a small number of electric utility combined-heat-and-power (CHP) plants. • The electric power sector comprises electricity-only and combined-heat-and-power (CHP) plants within the NAICS 22 category whose primary business is to sell electricity, or electricity and heat, to the public. • Totals may not equal sum of components due to independent rounding. • Geographic coverage is the 50 States and the District of Columbia.

Web Page: See <http://www.eia.gov/totalenergy/data/monthly/#electricity> for all available data beginning in 1973.

Sources: See end of section.

Table 7.3c Consumption of Selected Combustible Fuels for Electricity Generation: Commercial and Industrial Sectors (Subset of Table 7.3a)

	Commercial Sector ^a				Industrial Sector ^b						
	Coal ^c	Petroleum ^d	Natural Gas ^e	Biomass	Coal ^c	Petroleum ^d	Natural Gas ^e	Other Gases ^g	Biomass		Other ⁱ
				Waste ^f					Wood ^h	Waste ^f	
	Thousand Short Tons	Thousand Barrels	Billion Cubic Feet	Trillion Btu	Thousand Short Tons	Thousand Barrels	Billion Cubic Feet	Trillion Btu			
1989 Total	414	1,165	18	9	9,707	8,482	444	83	267	15	37
1990 Total	417	953	28	15	10,740	13,103	517	104	335	16	36
1995 Total	569	649	43	21	12,171	12,265	601	114	373	13	40
1996 Total	656	645	42	31	12,153	13,813	610	143	394	13	35
1997 Total	630	790	39	34	12,311	11,723	623	105	367	14	36
1998 Total	440	802	41	32	11,728	12,392	625	102	349	13	35
1999 Total	481	931	39	33	11,432	12,595	639	112	364	8	39
2000 Total	514	823	37	26	11,706	10,459	640	107	369	10	45
2001 Total	532	1,023	36	15	10,636	10,530	654	88	370	7	44
2002 Total	477	834	33	18	11,855	11,608	685	106	464	15	43
2003 Total	582	894	38	19	10,440	10,424	668	127	362	13	46
2004 Total	377	766	33	19	7,687	6,919	566	108	194	5	41
2005 Total	377	585	34	20	7,504	6,440	518	85	189	5	46
2006 Total	347	333	35	21	7,408	5,066	536	87	187	3	45
2007 Total	361	258	34	19	5,089	5,041	554	88	188	4	41
2008 Total	369	166	33	20	5,075	3,617	520	73	179	5	39
2009 Total	317	190	34	23	4,674	3,328	520	62	160	4	42
2010											
January	32	18	3	2	654	252	48	5	14	1	4
February	28	16	3	2	643	212	43	5	13	1	4
March	26	12	3	2	746	182	44	6	14	1	4
April	23	11	3	2	456	171	42	6	14	1	4
May	23	14	3	2	727	190	44	6	14	1	4
June	27	13	3	2	643	204	47	6	14	1	5
July	30	26	4	2	769	213	50	6	15	1	5
August	29	15	4	2	835	207	53	7	15	1	5
September	26	13	3	2	666	171	48	6	15	1	5
October	23	11	3	2	690	195	44	5	14	1	5
November	21	7	3	2	529	208	43	6	14	1	4
December	26	15	4	2	765	217	48	6	15	1	5
Total	314	172	39	24	8,125	2,422	555	70	172	8	55
2011											
January	30	14	3	2	771	223	49	6	15	1	2
February	28	9	3	2	663	160	44	5	13	1	2
March	28	8	3	2	641	179	44	6	14	1	3
April	22	6	3	2	437	171	45	6	14	1	3
May	23	7	3	2	746	143	48	5	13	1	3
June	24	9	3	2	688	173	47	6	15	1	3
July	28	15	4	2	798	181	50	7	15	1	3
August	26	9	3	2	811	180	50	6	15	1	3
September	23	8	3	2	769	183	46	6	14	1	2
October	20	11	3	2	725	145	44	6	14	1	3
November	20	8	3	2	509	124	47	6	15	1	3
December	24	8	3	2	533	161	51	6	16	1	3
Total	297	112	38	24	8,091	2,023	564	71	173	8	31
2012											
January	25	7	3	2	706	460	50	6	15	1	2
February	25	5	3	2	631	299	47	6	15	1	2
March	22	6	3	2	634	291	46	7	14	1	2
April	19	8	3	2	387	306	44	7	15	1	2
May	20	8	3	2	342	281	51	7	16	1	3
June	22	16	4	5	371	292	51	6	16	1	2
6-Month Total	134	50	18	15	3,071	1,928	289	38	91	4	15
2011 6-Month Total	156	54	18	11	3,947	1,050	277	34	85	4	16
2010 6-Month Total	159	84	17	12	3,870	1,211	268	34	83	4	26

^a Commercial combined-heat-and-power (CHP) and commercial electricity-only plants.

^b Industrial combined-heat-and-power (CHP) and industrial electricity-only plants.

^c Anthracite, bituminous coal, subbituminous coal, lignite, waste coal, and coal synfuel.

^d Distillate fuel oil, residual fuel oil, petroleum coke, jet fuel, kerosene, other petroleum, and waste oil.

^e Natural gas, plus a small amount of supplemental gaseous fuels.

^f Municipal solid waste from biogenic sources, landfill gas, sludge waste, agricultural byproducts, and other biomass. Through 2000, also includes non-renewable waste (municipal solid waste from non-biogenic sources, and tire-derived fuels).

^g Blast furnace gas, propane gas, and other manufactured and waste gases derived from fossil fuels.

^h Wood and wood-derived fuels.

ⁱ Batteries, chemicals, hydrogen, pitch, purchased steam, sulfur, miscellaneous technologies, and, beginning in 2001, non-renewable waste (municipal solid waste from non-biogenic sources, and tire-derived fuels).

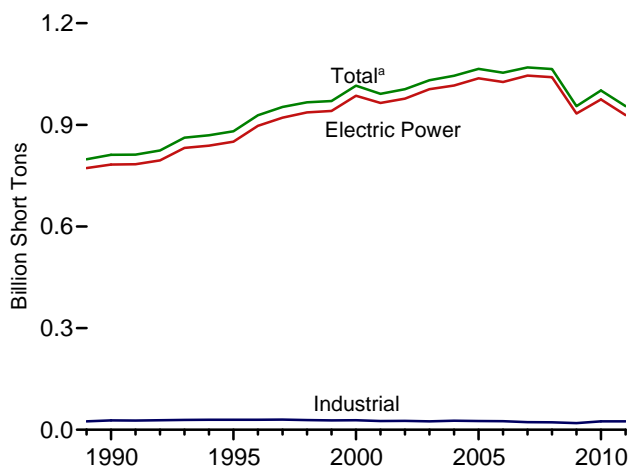
Notes: • Data are for fuels consumed to produce electricity. Through 1988, data are not available. • See Note, "Classification of Power Plants Into Energy-Use Sectors," at end of section. • Totals may not equal sum of components due to independent rounding. • Geographic coverage is the 50 States and the District of Columbia.

Web Page: See <http://www.eia.gov/totalenergy/data/monthly/#electricity> for all available data beginning in 1989.

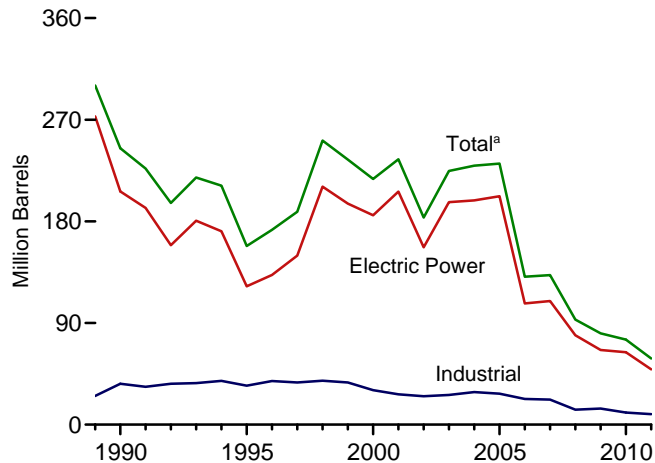
Sources: • **1989-1997:** U.S. Energy Information Administration (EIA), Form EIA-867, "Annual Nonutility Power Producer Report." • **1998-2000:** EIA, Form EIA-860B, "Annual Electric Generator Report—Nonutility." • **2001-2003:** EIA, Form EIA-906, "Power Plant Report." • **2004-2007:** EIA, Form EIA-906, "Power Plant Report," and Form EIA-920, "Combined Heat and Power Plant Report." • **2008 forward:** EIA, Form EIA-923, "Power Plant Operations Report."

Figure 7.4 Consumption of Selected Combustible Fuels for Electricity Generation and Useful Thermal Output

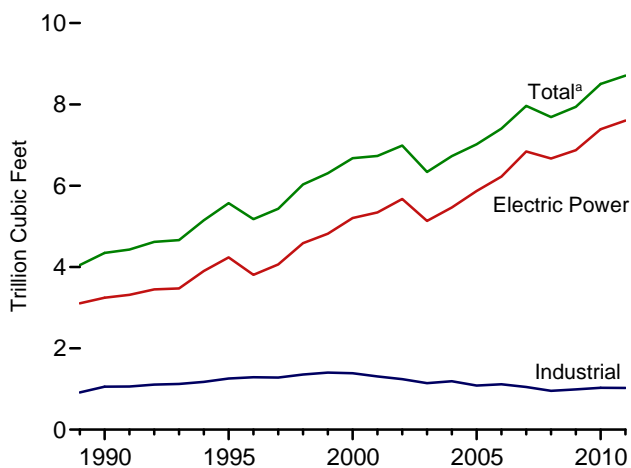
Coal by Sector, 1989-2011



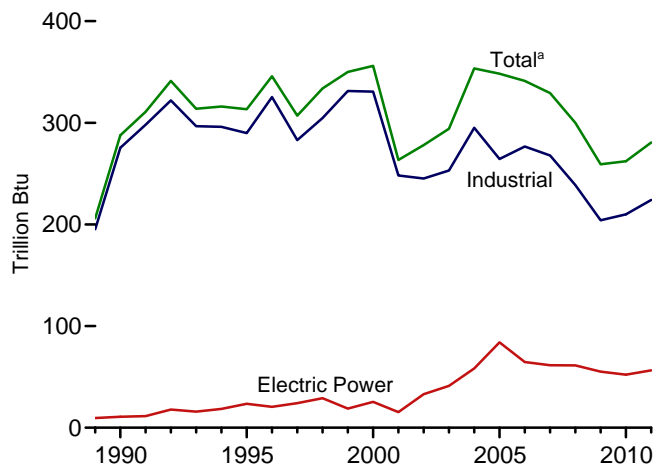
Petroleum by Sector, 1989-2011



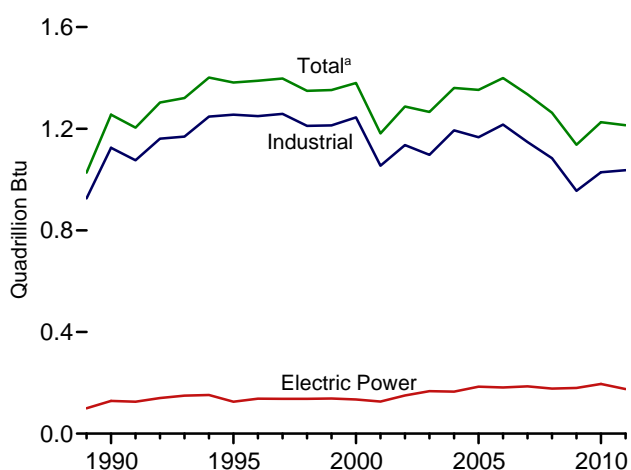
Natural Gas by Sector, 1989-2011



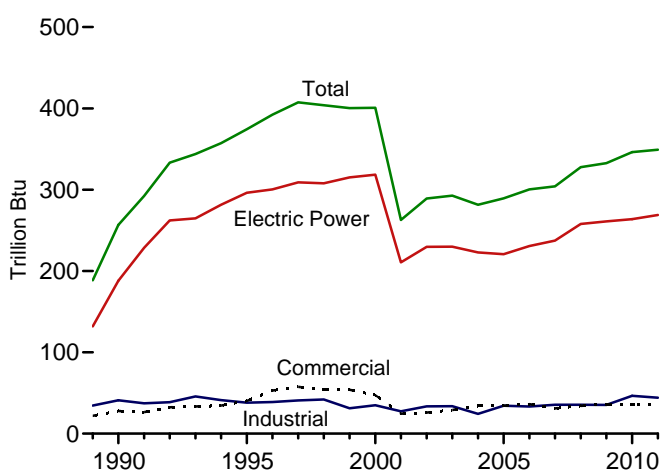
Other Gases^b by Sector, 1989-2011



Wood by Sector, 1989-2011



Waste by Sector, 1989-2011



^a Includes commercial sector.

^b Blast furnace gas, propane gas, and other manufactured and waste gases derived from fossil fuels.

Web Page: <http://www.eia.gov/totalenergy/data/monthly/#electricity>.
Sources: Tables 7.4a–7.4c.

Table 7.4a Consumption of Combustible Fuels for Electricity Generation and Useful Thermal Output: Total (All Sectors) (Sum of Tables 7.4b and 7.4c)

	Coal ^a	Petroleum					Natural Gas ^f	Other Gases ^g	Biomass		Other ⁱ
		Distillate Fuel Oil ^b	Residual Fuel Oil ^c	Other Liquids ^d	Petroleum Coke ^e	Total ^e			Wood ^h	Waste ⁱ	
		Thousand Short Tons	Thousand Barrels			Thousand Short Tons			Thousand Barrels	Billion Cubic Feet	
1973 Total	389,212	47,058	513,190	NA	507	562,781	3,660	NA	1	2	NA
1975 Total	405,962	38,907	467,221	NA	70	506,479	3,158	NA	0	2	NA
1980 Total	569,274	29,051	391,163	NA	179	421,110	3,682	NA	3	2	NA
1985 Total	693,841	14,635	158,779	NA	231	174,571	3,044	NA	8	7	NA
1990 Total ^k	811,538	20,194	209,081	1,332	2,832	244,765	4,346	288	1,256	257	86
1995 Total	881,012	21,697	112,168	1,322	4,590	158,140	5,572	313	1,382	374	97
1996 Total	928,015	22,444	124,607	2,468	4,596	172,499	5,178	346	1,389	392	91
1997 Total	952,955	22,893	134,623	526	6,095	188,517	5,433	307	1,397	407	103
1998 Total	966,615	30,006	189,267	1,230	6,196	251,486	6,030	334	1,349	404	95
1999 Total	970,175	30,616	172,319	1,812	5,989	234,694	6,305	350	1,352	400	101
2000 Total	1,015,398	34,572	156,673	2,904	4,669	217,494	6,677	356	1,380	401	109
2001 Total	991,635	33,724	177,137	1,418	4,532	234,940	6,731	263	1,182	263	229
2002 Total	1,005,144	24,749	118,637	3,257	7,353	183,409	6,986	278	1,287	289	252
2003 Total	1,031,778	31,825	152,859	4,576	7,067	224,593	6,337	294	1,266	293	262
2004 Total	1,044,798	23,520	157,478	4,764	8,721	229,364	6,727	353	1,360	282	254
2005 Total	1,065,281	24,446	156,915	4,270	9,113	231,193	7,021	348	1,353	289	237
2006 Total	1,053,783	14,655	69,846	3,396	8,622	131,005	7,404	341	1,399	300	247
2007 Total	1,069,606	17,042	74,616	4,237	7,299	132,389	7,962	329	1,336	304	239
2008 Total	1,064,503	14,137	43,477	3,765	6,314	92,948	7,689	300	1,263	328	212
2009 Total	955,190	14,800	33,672	3,218	5,828	80,830	7,938	259	1,137	333	228
2010											
January	92,738	2,643	3,212	338	525	8,819	643	21	103	29	18
February	82,029	978	1,397	286	497	5,143	566	19	96	26	17
March	78,383	866	1,439	207	522	5,124	547	23	103	30	19
April	69,179	837	1,355	176	458	4,656	556	22	98	29	19
May	77,725	1,111	2,221	176	500	6,005	647	23	98	29	20
June	89,063	1,295	3,291	204	586	7,721	796	23	101	29	21
July	96,783	1,455	3,921	244	613	8,684	997	22	105	29	21
August	96,593	1,185	3,190	206	510	7,132	1,047	23	106	29	21
September	81,250	961	2,006	191	475	5,534	791	22	103	27	20
October	72,571	871	1,370	186	453	4,693	662	20	101	29	20
November	74,496	1,017	1,212	204	414	4,503	586	21	102	30	20
December	90,600	2,029	2,332	361	499	7,218	665	23	109	30	21
Total	1,001,411	15,247	26,944	2,777	6,053	75,231	8,502	262	1,226	346	237
2011											
January	92,180	1,302	2,014	286	602	6,611	639	22	108	29	15
February	75,364	934	1,197	161	490	4,742	568	20	96	26	14
March	74,254	890	1,327	175	573	5,256	570	24	100	29	16
April	68,631	1,020	1,541	170	409	4,774	615	23	95	27	15
May	75,353	962	1,405	147	434	4,683	671	23	94	29	16
June	85,880	1,013	1,452	188	475	5,030	794	24	104	29	17
July	96,079	1,208	1,739	206	566	5,982	1,037	24	105	30	17
August	93,974	851	1,523	165	498	5,029	1,020	24	103	30	16
September	78,352	816	1,129	225	465	4,497	777	23	101	29	15
October	71,305	762	1,162	152	388	4,018	666	25	97	29	15
November	68,515	748	1,082	164	358	3,784	636	23	100	30	15
December	75,036	868	1,109	162	408	4,181	713	25	109	31	17
Total	954,925	11,374	16,678	2,203	5,666	58,586	8,707	281	1,214	349	189
2012											
January	72,487	817	1,177	171	487	4,598	753	26	107	29	16
February	64,477	674	882	140	388	3,637	743	26	99	27	15
March	59,263	609	985	185	372	3,642	775	26	95	29	16
April	53,057	764	908	177	305	3,376	814	25	90	29	15
May	64,624	888	977	174	338	3,730	914	25	98	30	16
June	73,266	905	1,434	171	309	4,058	983	26	98	29	16
6-Month Total	387,176	4,658	6,363	1,019	2,200	23,041	4,983	155	588	173	94
2011 6-Month Total	471,663	6,122	8,935	1,129	2,982	31,096	3,858	136	598	170	93
2010 6-Month Total	489,118	7,729	12,914	1,386	3,088	37,468	3,755	131	598	171	115

^a Anthracite, bituminous coal, subbituminous coal, lignite, waste coal, and coal synfuel.

^b Fuel oil nos. 1, 2, and 4. Through 2000, electric utility data also include small amounts of kerosene and jet fuel.

^c Fuel oil nos. 5 and 6. Through 2000, electric utility data also include a small amount of fuel oil no. 4.

^d Jet fuel, kerosene, other petroleum liquids, and waste oil.

^e Petroleum coke is converted from short tons to barrels by multiplying by 5.

^f Natural gas, plus a small amount of supplemental gaseous fuels.

^g Blast furnace gas, propane gas, and other manufactured and waste gases derived from fossil fuels.

^h Wood and wood-derived fuels.

ⁱ Municipal solid waste from biogenic sources, landfill gas, sludge waste, agricultural byproducts, and other biomass. Through 2000, also includes

non-renewable waste (municipal solid waste from non-biogenic sources, and tire-derived fuels).

^j Batteries, chemicals, hydrogen, pitch, purchased steam, sulfur, miscellaneous technologies, and, beginning in 2001, non-renewable waste (municipal solid waste from non-biogenic sources, and tire-derived fuels).

^k Through 1988, data are for electric utilities only. Beginning in 1989, data are for electric utilities, independent power producers, commercial plants, and industrial plants.

NA=Not available.

Notes: • Totals may not equal sum of components due to independent rounding. • Geographic coverage is the 50 States and the District of Columbia.

Web Page: See <http://www.eia.gov/totalenergy/data/monthly/#electricity> for all available data beginning in 1973.

Sources: See sources for Tables 7.4b and 7.4c.

Table 7.4b Consumption of Combustible Fuels for Electricity Generation and Useful Thermal Output: Electric Power Sector (Subset of Table 7.4a)

	Coal ^a Thousand Short Tons	Petroleum					Natural Gas ^f Billion Cubic Feet	Other Gases ^g	Biomass		Other ⁱ
		Distillate Fuel Oil ^b Thousand Barrels	Residual Fuel Oil ^c Thousand Barrels	Other Liquids ^d	Petroleum Coke ^e Thousand Short Tons	Total ^e Thousand Barrels			Wood ^h	Waste ⁱ	
1973 Total	389,212	47,058	513,190	NA	507	562,781	3,660	NA	1	2	NA
1975 Total	405,962	38,907	467,221	NA	70	506,479	3,158	NA	(s)	2	NA
1980 Total	569,274	29,051	391,163	NA	179	421,110	3,682	NA	3	2	NA
1985 Total	693,841	14,635	158,779	NA	231	174,571	3,044	NA	8	7	NA
1990 Total ^k	782,567	16,567	184,915	26	1,008	206,550	3,245	11	129	188	(s)
1995 Total	850,230	18,553	90,023	499	2,674	122,447	4,237	24	125	296	2
1996 Total	896,921	18,780	99,951	653	2,642	132,593	3,807	20	138	300	2
1997 Total	921,364	18,989	113,669	152	3,372	149,668	4,065	24	137	309	1
1998 Total	936,619	23,300	166,528	431	4,102	210,769	4,588	29	137	308	2
1999 Total	940,922	24,058	152,493	544	3,735	195,769	4,820	19	138	315	1
2000 Total	985,821	30,016	138,513	454	3,275	185,358	5,206	25	134	318	1
2001 Total	964,433	29,274	159,504	377	3,427	206,291	5,342	15	126	211	113
2002 Total	977,507	21,876	104,773	1,267	5,816	156,996	5,672	33	150	230	143
2003 Total	1,005,116	27,632	138,279	2,026	5,799	196,932	5,135	41	167	230	140
2004 Total	1,016,268	19,107	139,816	2,713	7,372	198,498	5,464	58	165	223	138
2005 Total	1,037,485	19,675	139,409	2,685	8,083	202,184	5,869	84	185	221	123
2006 Total	1,026,636	12,646	57,345	1,870	7,101	107,365	6,222	65	182	231	125
2007 Total	1,045,141	15,327	63,086	2,594	5,685	109,431	6,841	61	186	237	124
2008 Total	1,040,580	12,547	38,241	2,670	5,119	79,056	6,668	61	177	258	131
2009 Total	933,627	12,035	28,782	2,210	4,611	66,081	6,873	55	180	261	124
2010	90,452	2,459	2,887	222	413	7,636	546	5	17	21	10
February	79,884	851	1,061	219	389	4,076	480	4	16	20	9
March	76,110	759	1,256	131	427	4,281	457	5	16	22	10
April	66,842	699	1,214	112	369	3,871	471	5	15	21	10
May	75,597	1,023	2,055	104	400	5,181	560	5	14	22	10
June	87,030	1,222	3,147	137	471	6,860	706	5	16	23	11
July	94,519	1,309	3,730	185	503	7,742	897	5	17	23	11
August	94,247	1,068	3,051	149	394	6,236	943	4	18	23	11
September	79,176	883	1,845	136	372	4,726	697	4	16	22	10
October	70,492	772	1,161	112	346	3,773	570	3	15	22	10
November	72,514	890	1,035	126	301	3,557	497	4	16	23	10
December	88,189	1,854	2,062	245	391	6,118	564	4	17	23	11
Total	975,052	13,790	24,503	1,877	4,777	64,055	7,387	52	196	264	124
2011	89,682	1,225	1,759	224	500	5,707	542	4	16	21	10
February	73,156	858	1,020	117	374	3,866	482	4	15	20	9
March	72,009	827	1,164	121	451	4,364	483	5	15	23	11
April	66,741	940	1,378	104	291	3,879	526	4	12	22	10
May	73,100	894	1,279	103	306	3,807	578	4	13	22	11
June	83,700	950	1,316	129	374	4,265	705	5	15	23	11
July	93,736	1,139	1,603	158	462	5,211	942	5	16	24	11
August	91,667	793	1,400	107	400	4,299	923	5	16	23	11
September	76,131	760	1,027	127	380	3,812	686	5	15	22	10
October	69,109	690	995	119	295	3,280	578	5	13	23	10
November	66,557	697	962	131	242	2,999	543	5	13	23	10
December	72,971	814	973	128	319	3,512	612	5	16	23	11
Total	928,558	10,586	14,876	1,568	4,394	49,003	7,602	56	175	269	126
2012	70,231	758	1,054	125	342	3,649	651	6	16	22	11
February	62,450	638	790	97	274	2,895	649	6	15	21	10
March	57,211	567	898	111	212	2,636	680	5	14	23	11
April	51,357	717	838	102	163	2,472	724	4	11	22	11
May	62,827	842	892	134	198	2,860	819	5	13	23	11
June	71,514	830	1,364	117	182	3,220	884	5	15	20	9
6-Month Total	375,590	4,353	5,835	686	1,371	17,731	4,407	31	83	131	64
2011 6-Month Total	458,387	5,694	7,917	799	2,296	25,889	3,316	26	86	131	61
2010 6-Month Total	475,914	7,013	11,619	926	2,469	31,903	3,219	28	95	129	60

^a Anthracite, bituminous coal, subbituminous coal, lignite, waste coal, and coal symfuel.

^b Fuel oil nos. 1, 2, and 4. Through 2000, electric utility data also include small amounts of kerosene and jet fuel.

^c Fuel oil nos. 5 and 6. Through 2000, electric utility data also include a small amount of fuel oil no. 4.

^d Jet fuel, kerosene, other petroleum liquids, and waste oil.

^e Petroleum coke is converted from short tons to barrels by multiplying by 5.

^f Natural gas, plus a small amount of supplemental gaseous fuels.

^g Blast furnace gas, propane gas, and other manufactured and waste gases derived from fossil fuels.

^h Wood and wood-derived fuels.

ⁱ Municipal solid waste from biogenic sources, landfill gas, sludge waste, agricultural byproducts, and other biomass. Through 2000, also includes non-renewable waste (municipal solid waste from non-biogenic sources, and

tire-derived fuels).

^j Batteries, chemicals, hydrogen, pitch, purchased steam, sulfur, miscellaneous technologies, and, beginning in 2001, non-renewable waste (municipal solid waste from non-biogenic sources, and tire-derived fuels).

^k Through 1988, data are for electric utilities only. Beginning in 1989, data are for electric utilities and independent power producers.

NA=Not available. (s)=Less than 0.5 trillion Btu.

Notes: • The electric power sector comprises electricity-only and combined-heat-and-power (CHP) plants within the NAICS 22 category whose primary business is to sell electricity, or electricity and heat, to the public. • Totals may not equal sum of components due to independent rounding. • Geographic coverage is the 50 States and the District of Columbia.

Web Page: See <http://www.eia.gov/totalenergy/data/monthly/#electricity> for all available data beginning in 1973.

Sources: See end of section.

Table 7.4c Consumption of Selected Combustible Fuels for Electricity Generation and Useful Thermal Output: Commercial and Industrial Sectors (Subset of Table 7.4a)

	Commercial Sector ^a				Industrial Sector ^b						
	Coal ^c	Petroleum ^d	Natural Gas ^e	Biomass	Coal ^c	Petroleum ^d	Natural Gas ^e	Other Gases ^g	Biomass		Other ⁱ
				Waste ^f					Wood ^h	Waste ^f	
	Thousand Short Tons	Thousand Barrels	Billion Cubic Feet	Trillion Btu	Thousand Short Tons	Thousand Barrels	Billion Cubic Feet	Trillion Btu			
1989 Total	1,125	1,967	30	22	24,867	25,444	914	195	926	35	85
1990 Total	1,191	2,056	46	28	27,781	36,159	1,055	275	1,125	41	86
1995 Total	1,419	1,245	78	40	29,363	34,448	1,258	290	1,255	38	95
1996 Total	1,660	1,246	82	53	29,434	38,661	1,289	325	1,249	39	89
1997 Total	1,738	1,584	87	58	29,853	37,265	1,282	283	1,259	41	102
1998 Total	1,443	1,807	87	54	28,553	38,910	1,355	305	1,211	42	93
1999 Total	1,490	1,613	84	54	27,763	37,312	1,401	331	1,213	31	99
2000 Total	1,547	1,615	85	47	28,031	30,520	1,386	331	1,244	35	108
2001 Total	1,448	1,832	79	25	25,755	26,817	1,310	248	1,054	27	101
2002 Total	1,405	1,250	74	26	26,232	25,163	1,240	245	1,136	34	92
2003 Total	1,816	1,449	58	29	24,846	26,212	1,144	253	1,097	34	103
2004 Total	1,917	2,009	72	34	26,613	28,857	1,191	295	1,193	24	94
2005 Total	1,922	1,630	68	34	25,875	27,380	1,084	264	1,166	34	94
2006 Total	1,886	935	68	36	25,262	22,706	1,115	277	1,216	33	102
2007 Total	1,927	752	70	31	22,537	22,207	1,050	268	1,148	36	98
2008 Total	2,021	671	66	34	21,902	13,222	955	239	1,084	35	60
2009 Total	1,798	521	76	36	19,766	14,228	990	204	955	35	82
2010											
January	193	55	7	3	2,094	1,128	90	17	86	4	6
February	167	47	7	3	1,978	1,021	80	15	79	4	7
March	149	26	7	3	2,124	817	84	18	86	4	7
April	117	24	6	3	2,220	761	79	18	83	5	7
May	118	28	6	4	2,010	796	82	18	83	3	7
June	135	26	6	3	1,898	835	84	18	85	3	8
July	142	59	8	3	2,122	883	91	17	88	3	8
August	152	46	9	3	2,194	849	95	19	88	3	8
September	133	27	7	3	1,941	780	87	18	87	3	8
October	121	21	7	3	1,958	899	84	17	86	5	8
November	128	22	7	3	1,854	924	82	17	86	5	8
December	165	55	8	3	2,246	1,045	92	19	91	4	8
Total	1,720	437	86	36	24,638	10,740	1,029	210	1,029	47	91
2011											
January	178	45	8	3	2,320	858	89	18	91	4	3
February	165	24	7	3	2,044	852	79	16	81	4	3
March	158	29	6	3	2,088	862	81	20	86	3	3
April	124	15	6	3	1,767	880	82	19	83	3	3
May	128	17	7	3	2,126	859	87	18	81	4	4
June	124	22	6	3	2,056	743	83	19	89	4	4
July	134	35	7	3	2,208	737	88	19	89	4	4
August	124	20	7	3	2,182	710	89	19	86	4	3
September	121	15	6	3	2,100	670	84	18	87	4	3
October	116	19	6	3	2,080	719	81	20	84	4	3
November	123	18	7	3	1,835	767	86	19	87	4	3
December	138	23	8	3	1,927	646	94	20	93	4	4
Total	1,633	282	81	36	24,733	9,302	1,024	224	1,037	44	40
2012											
January	154	30	7	3	2,102	919	94	21	91	4	3
February	137	16	7	3	1,890	726	87	20	84	4	3
March	131	17	6	3	1,921	989	89	21	81	3	3
April	111	14	6	3	1,589	891	84	20	79	4	3
May	117	15	6	3	1,680	855	90	21	85	4	4
June	110	27	8	6	1,643	811	92	21	84	4	3
6-Month Total	760	119	39	20	10,827	5,191	536	124	504	22	19
2011 6-Month Total	876	153	40	17	12,400	5,054	502	110	511	21	20
2010 6-Month Total	880	206	38	19	12,324	5,359	498	103	502	23	43

^a Commercial combined-heat-and-power (CHP) and commercial electricity-only plants.

^b Industrial combined-heat-and-power (CHP) and industrial electricity-only plants.

^c Anthracite, bituminous coal, subbituminous coal, lignite, waste coal, and coal syngas.

^d Distillate fuel oil, residual fuel oil, petroleum coke, jet fuel, kerosene, other petroleum, and waste oil.

^e Natural gas, plus a small amount of supplemental gaseous fuels.

^f Municipal solid waste from biogenic sources, landfill gas, sludge waste, agricultural byproducts, and other biomass. Through 2000, also includes non-renewable waste (municipal solid waste from non-biogenic sources, and tire-derived fuels).

^g Blast furnace gas, propane gas, and other manufactured and waste gases derived from fossil fuels.

^h Wood and wood-derived fuels.

ⁱ Batteries, chemicals, hydrogen, pitch, purchased steam, sulfur, miscellaneous technologies, and, beginning in 2001, non-renewable waste (municipal solid waste from non-biogenic sources, and tire-derived fuels).

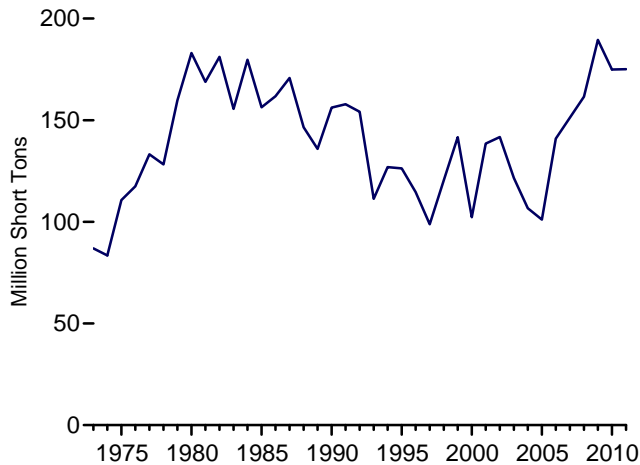
Notes: • See Note, "Classification of Power Plants Into Energy-Use Sectors," at end of section. • Totals may not equal sum of components due to independent rounding. • Geographic coverage is the 50 States and the District of Columbia.

Web Page: See <http://www.eia.gov/totalenergy/data/monthly/#electricity> for all available data beginning in 1989.

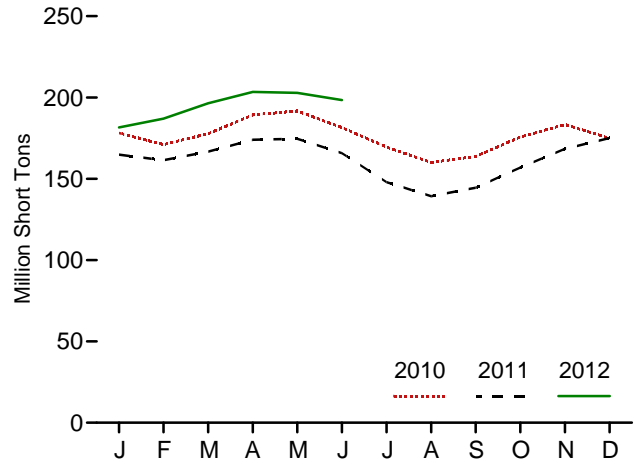
Sources: • **1989-1997:** U.S. Energy Information Administration (EIA), Form EIA-867, "Annual Nonutility Power Producer Report." • **1998-2000:** EIA, Form EIA-860B, "Annual Electric Generator Report—Nonutility." • **2001-2003:** EIA, Form EIA-906, "Power Plant Report." • **2004-2007:** EIA, Form EIA-906, "Power Plant Report," and Form EIA-920, "Combined Heat and Power Plant Report." • **2008 forward:** EIA, Form EIA-923, "Power Plant Operations Report."

Figure 7.5 Stocks of Coal and Petroleum: Electric Power Sector

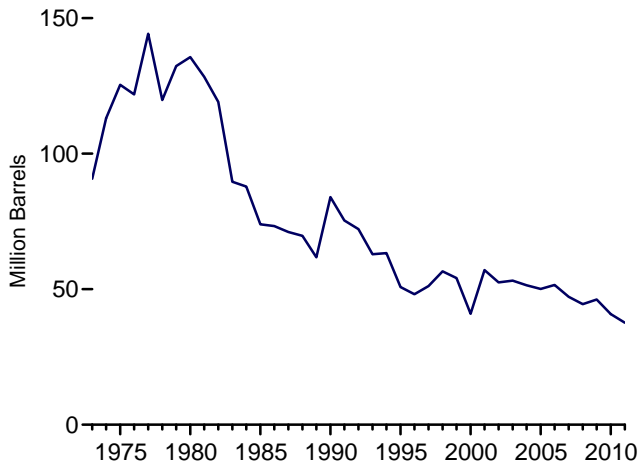
Coal, 1973-2011



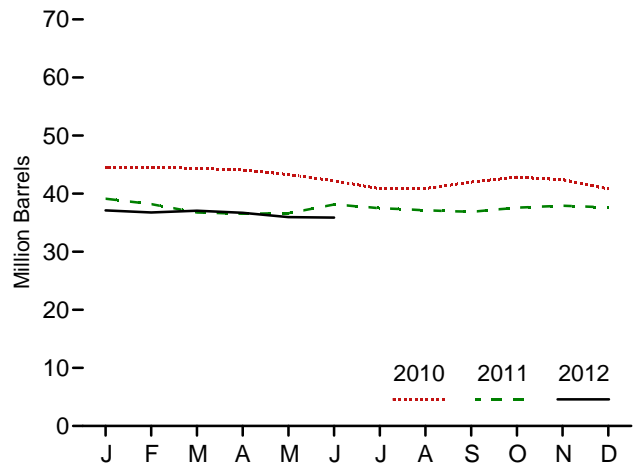
Coal, Monthly



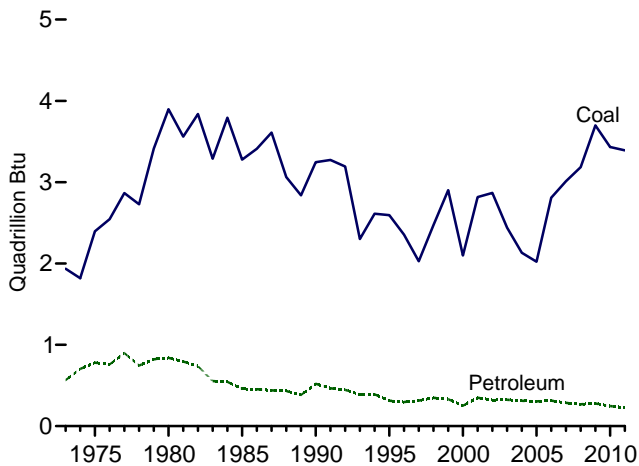
Total Petroleum, 1973-2011



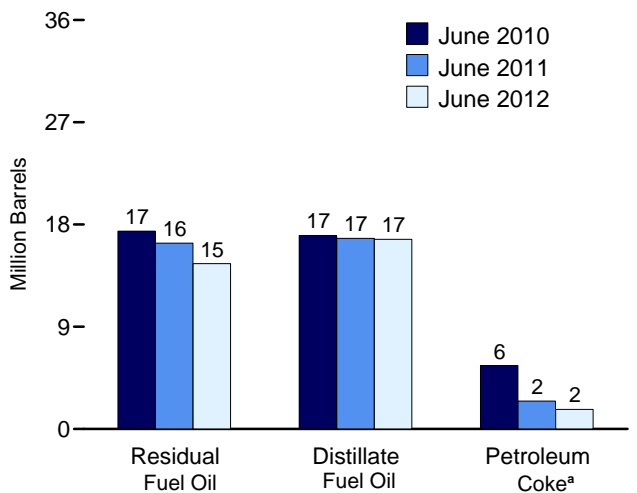
Total Petroleum, Monthly



Coal and Petroleum Stocks, 1973-2011



Petroleum by Major Type, End of Month



^a Converted from short tons to barrels by multiplying by 5.
 Web Page: <http://www.eia.gov/totalenergy/data/monthly/#electricity>.
 Sources: Tables 7.5, A1, and A5 (column 6).

Table 7.5 Stocks of Coal and Petroleum: Electric Power Sector

	Petroleum					Total ^e
	Coal ^a	Distillate Fuel Oil ^b	Residual Fuel Oil ^c	Other Liquids ^d	Petroleum Coke ^e	
	Thousand Short Tons	Thousand Barrels			Thousand Short Tons	
1973 Year	86,967	10,095	79,121	NA	312	90,776
1975 Year	110,724	16,432	108,825	NA	31	125,413
1980 Year	183,010	30,023	105,351	NA	52	135,635
1985 Year	156,376	16,386	57,304	NA	49	73,933
1990 Year	156,166	16,471	67,030	NA	94	83,970
1995 Year	126,304	15,392	35,102	NA	65	50,821
1996 Year	114,623	15,216	32,473	NA	91	48,146
1997 Year	98,826	15,456	33,336	NA	469	51,138
1998 Year	120,501	16,343	37,451	NA	559	56,591
1999 Year ^f	141,604	17,995	34,256	NA	372	54,109
2000 Year	102,296	15,127	24,748	NA	211	40,932
2001 Year	138,496	20,486	34,594	NA	390	57,031
2002 Year	141,714	17,413	25,723	800	1,711	52,490
2003 Year	121,567	19,153	25,820	779	1,484	53,170
2004 Year	106,669	19,275	26,596	879	937	51,434
2005 Year	101,137	18,778	27,624	1,012	530	50,062
2006 Year	140,964	18,013	28,823	1,380	674	51,583
2007 Year	151,221	18,395	24,136	1,902	554	47,203
2008 Year	161,589	17,761	21,088	1,955	739	44,498
2009 Year	189,467	17,886	19,068	2,257	1,394	46,181
2010 January	178,091	17,193	18,035	2,198	1,406	44,454
February	171,026	17,409	18,532	2,222	1,280	44,562
March	177,742	17,353	18,679	2,105	1,240	44,337
April	189,260	17,295	18,353	2,228	1,243	44,090
May	191,669	17,185	17,935	2,235	1,188	43,294
June	181,490	17,040	17,411	2,172	1,117	42,209
July	169,504	16,917	16,441	2,268	1,046	40,856
August	159,987	16,737	16,288	2,292	1,112	40,878
September	163,776	16,608	17,269	2,330	1,158	41,996
October	175,686	16,698	17,781	2,377	1,197	42,840
November	183,389	17,024	17,492	2,410	1,098	42,414
December	174,917	16,758	16,629	2,319	1,019	40,800
2011 January	164,840	16,673	16,061	2,383	801	39,123
February	161,439	16,654	15,575	2,435	707	38,200
March	166,737	16,498	15,393	2,437	489	36,776
April	173,999	16,301	15,180	2,460	522	36,551
May	174,619	16,195	15,235	2,447	548	36,617
June	165,707	16,779	16,356	2,564	491	38,152
July	147,967	16,550	16,090	2,561	462	37,510
August	139,225	16,583	15,804	2,581	435	37,144
September	144,438	16,691	15,654	2,593	389	36,884
October	156,906	16,955	15,942	2,640	413	37,601
November	168,354	17,148	15,832	2,677	453	37,923
December	175,100	17,101	15,469	2,690	470	37,608
2012 January	181,621	17,179	15,248	2,718	394	37,116
February	186,958	17,024	15,174	2,766	357	36,749
March	196,391	16,929	15,326	2,792	405	37,073
April	203,394	16,876	15,144	2,834	368	36,697
May	202,816	16,801	14,809	2,862	301	35,975
June	198,422	16,699	14,553	2,903	346	35,886

^a Anthracite, bituminous coal, subbituminous coal, and lignite.

^b Fuel oil nos. 1, 2 and 4. For 1973-1979, data are for gas turbine and internal combustion plant stocks of petroleum. For 1980-2000, electric utility data also include small amounts of kerosene and jet fuel.

^c Fuel oil nos. 5 and 6. For 1973-1979, data are for steam plant stocks of petroleum. For 1980-2000, electric utility data also include a small amount of fuel oil no. 4.

^d Jet fuel and kerosene. Through 2003, data also include a small amount of waste oil.

^e Petroleum coke is converted from short tons to barrels by multiplying by 5.

^f Through 1998, data are for electric utilities only. Beginning in 1999, data are for electric utilities and independent power producers.

NA=Not available.

Notes: • The electric power sector comprises electricity-only and combined-heat-and-power (CHP) plants within the NAICS 22 category whose primary business is to sell electricity, or electricity and heat, to the public. • Stocks

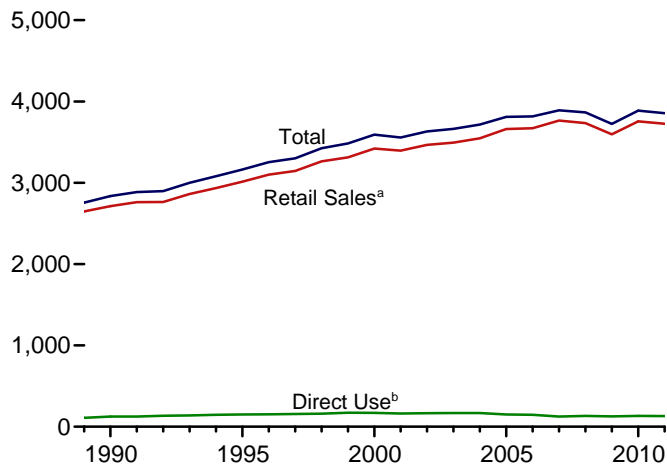
are at end of period. • Totals may not equal sum of components due to independent rounding. • Geographic coverage is the 50 States and the District of Columbia.

Web Page: See <http://www.eia.gov/totalenergy/data/monthly/#electricity> for all available data beginning in 1973.

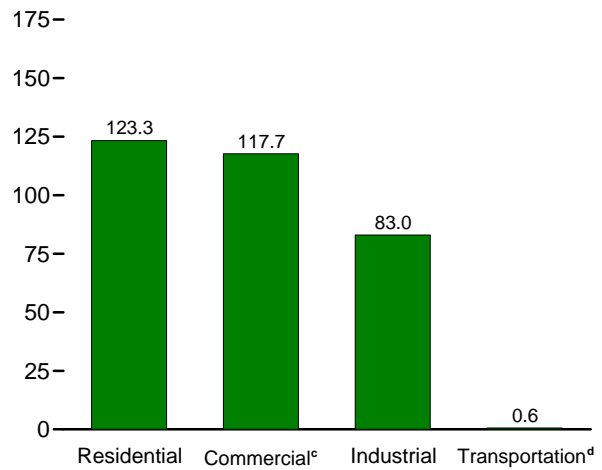
Sources: • **1973-September 1977:** Federal Power Commission, Form FPC-4, "Monthly Power Plant Report." • **October 1977-1981:** Federal Energy Regulatory Commission, Form FPC-4, "Monthly Power Plant Report." • **1982-1988:** U.S. Energy Information Administration (EIA), Form EIA-759, "Monthly Power Plant Report." • **1989-1997:** EIA, Form EIA-759, "Monthly Power Plant Report," and Form EIA-867, "Annual Nonutility Power Producer Report." • **1998-2000:** EIA, Form EIA-759, "Monthly Power Plant Report," and Form EIA-860B, "Annual Electric Generator Report—Nonutility." • **2001-2003:** EIA, Form EIA-906, "Power Plant Report." • **2004-2007:** EIA, Form EIA-906, "Power Plant Report," and Form EIA-920, "Combined Heat and Power Plant Report." • **2008 forward:** EIA, Form EIA-923, "Power Plant Operations Report."

Figure 7.6 Electricity End Use
(Billion Kilowatthours)

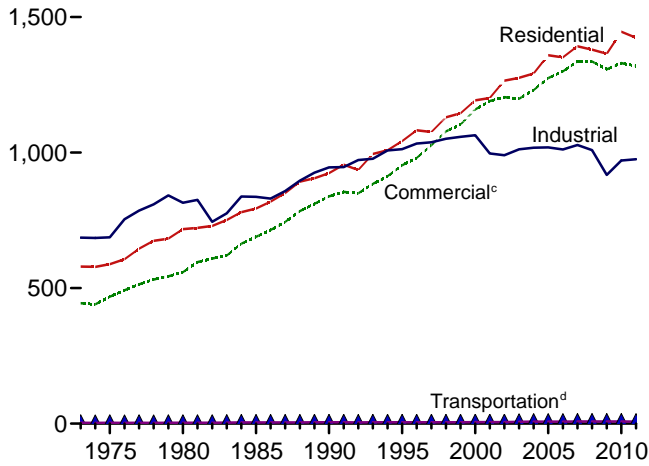
Electricity End Use Overview, 1989-2011



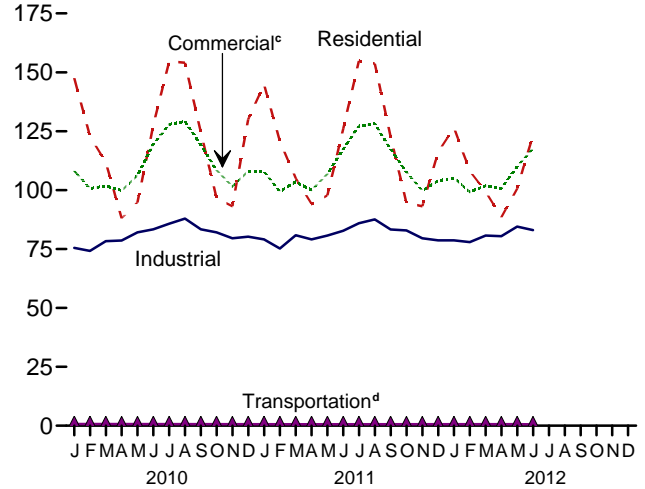
Retail Sales^a by Sector, June 2012



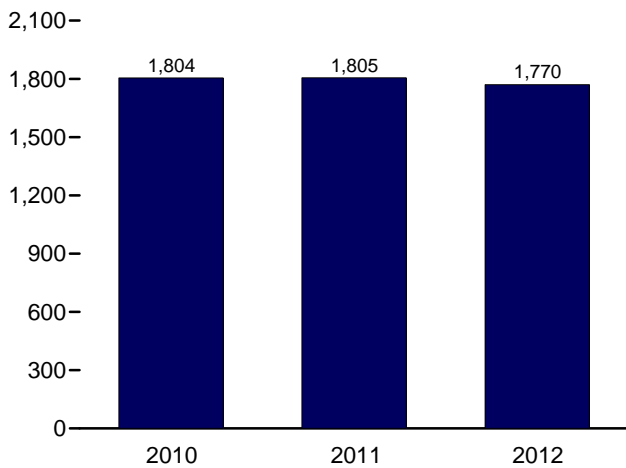
Retail Sales^a by Sector, 1973-2011



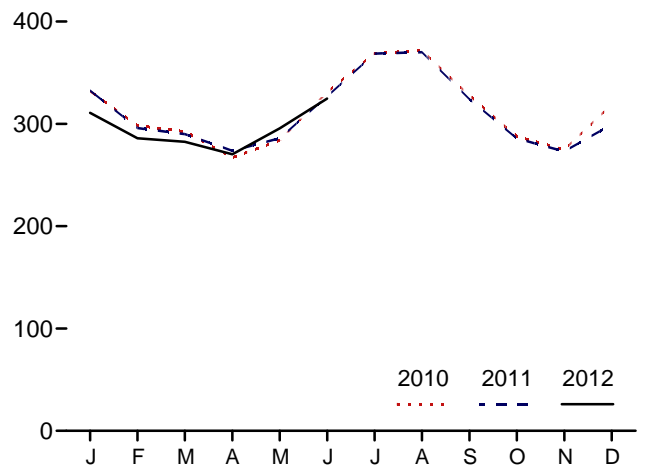
Retail Sales^a by Sector, Monthly



Retail Sales^a Total, January-June



Retail Sales^a Total, Monthly



^a Electricity retail sales to ultimate customers reported by utilities and other energy service providers.
^b See "Direct Use" in Glossary.
^c Commercial sector, including public street and highway lighting, inter

departmental sales, and other sales to public authorities.
^d Transportation sector, including sales to railroads and railways.
 Web Page: <http://www.eia.gov/totalenergy/data/monthly/#electricity>.
 Source: Table 7.6.

Table 7.6 Electricity End Use
(Million Kilowatthours)

	Retail Sales ^a					Direct Use ^f	Total End Use ^g	Discontinued Retail Sales Series	
	Residential	Commercial ^b	Industrial ^c	Transportation ^d	Total Retail Sales ^e			Commercial (Old) ^h	Other (Old) ⁱ
1973 Total	579,231	^E 444,505	686,085	^E 3,087	1,712,909	NA	1,712,909	388,266	59,326
1975 Total	588,140	^E 468,296	687,680	^E 2,974	1,747,091	NA	1,747,091	403,049	68,222
1980 Total	717,495	558,643	815,067	3,244	2,094,449	NA	2,094,449	488,155	73,732
1985 Total	793,934	689,121	836,772	4,147	2,323,974	NA	2,323,974	605,989	87,279
1990 Total	924,019	838,263	945,522	4,751	2,712,555	124,529	2,837,084	751,027	91,988
1995 Total	1,042,501	953,117	1,012,693	4,975	3,013,287	150,677	3,163,963	862,685	95,407
1996 Total	1,082,512	980,061	1,033,631	4,923	3,101,127	152,638	3,253,765	887,445	97,539
1997 Total	1,075,880	1,026,626	1,038,197	4,907	3,145,610	156,239	3,301,849	928,633	102,901
1998 Total	1,130,109	1,077,957	1,051,203	4,962	3,264,231	160,866	3,425,097	979,401	103,518
1999 Total	1,144,923	1,103,821	1,058,217	5,126	3,312,087	171,629	3,483,716	1,001,996	106,952
2000 Total	1,192,446	1,159,347	1,064,239	5,382	3,421,414	170,943	3,592,357	1,055,232	109,496
2001 Total	1,201,607	1,190,518	996,609	5,724	3,394,458	162,649	3,557,107	1,083,069	113,174
2002 Total	1,265,180	1,204,531	990,238	5,517	3,465,466	166,184	3,631,650	1,104,497	105,552
2003 Total	1,275,824	1,198,728	1,012,373	6,810	3,493,734	168,295	3,662,029	--	--
2004 Total	1,291,982	1,230,425	1,017,850	7,224	3,547,479	168,470	3,715,949	--	--
2005 Total	1,359,227	1,275,079	1,019,156	7,506	3,660,969	150,016	3,810,984	--	--
2006 Total	1,351,520	1,299,744	1,011,298	7,358	3,669,919	146,927	3,816,845	--	--
2007 Total	1,392,241	1,336,315	1,027,832	8,173	3,764,561	125,670	3,890,231	--	--
2008 Total	1,379,981	1,335,981	1,009,300	7,700	3,732,962	132,197	3,865,159	--	--
2009 Total	1,364,474	1,307,168	917,442	7,781	3,596,865	126,938	3,723,803	--	--
2010									
January	147,500	108,120	75,506	715	331,841	^E 11,084	342,925	--	--
February	122,840	100,747	74,164	689	298,440	^E 10,144	308,585	--	--
March	111,790	101,756	78,303	656	292,505	^E 10,884	303,389	--	--
April	88,046	99,791	78,597	600	267,034	^E 10,091	277,125	--	--
May	94,843	106,176	82,088	606	283,712	^E 10,611	294,323	--	--
June	127,496	119,388	83,347	658	330,889	^E 11,037	341,927	--	--
July	154,688	127,925	85,725	667	369,006	^E 11,690	380,696	--	--
August	154,053	129,143	87,904	628	371,728	^E 12,298	384,026	--	--
September	124,582	119,137	83,353	639	327,711	^E 11,221	338,932	--	--
October	96,688	108,461	82,046	615	287,811	^E 10,605	298,416	--	--
November	93,166	101,524	79,575	607	274,871	^E 10,520	285,392	--	--
December	130,015	108,031	80,264	633	318,943	^E 11,725	330,668	--	--
Total	1,445,708	1,330,199	970,873	7,712	3,754,493	131,910	3,886,403	--	--
2011									
January	144,911	107,884	79,055	710	332,561	^E 11,301	343,862	--	--
February	120,685	99,368	75,223	633	295,909	^E 10,037	305,945	--	--
March	105,065	103,507	80,817	655	290,044	^E 10,506	300,550	--	--
April	94,069	100,019	79,099	618	273,805	^E 10,119	283,924	--	--
May	97,755	106,841	80,741	615	285,951	^E 10,831	296,783	--	--
June	126,008	117,460	82,775	637	326,881	^E 10,899	337,780	--	--
July	154,888	127,139	85,907	645	368,580	^E 11,630	380,209	--	--
August	153,688	128,200	87,565	620	370,073	^E 11,570	381,643	--	--
September	122,842	117,403	83,311	630	324,186	^E 10,787	334,973	--	--
October	94,576	107,655	82,860	608	285,699	^E 10,356	296,055	--	--
November	93,126	99,782	79,561	584	273,053	^E 10,639	283,692	--	--
December	116,087	104,030	78,655	649	299,421	^E 11,505	310,926	--	--
Total	1,423,700	1,319,288	975,569	7,606	3,726,163	^E 130,179	3,856,342	--	--
2012									
January	126,475	105,076	78,640	669	310,859	^E 11,539	322,398	--	--
February	108,145	99,266	77,918	646	285,975	^E 10,860	296,835	--	--
March	99,342	101,806	80,694	612	282,453	^E 10,619	293,072	--	--
April	88,444	100,733	80,444	596	270,217	^E 9,966	280,183	--	--
May	100,629	109,955	84,482	617	295,682	^E 10,920	306,601	--	--
June	123,317	117,708	83,015	609	324,650	^E 11,213	335,862	--	--
6-Month Total	646,351	634,545	485,192	3,749	1,769,836	^E 65,115	1,834,952	--	--
2011 6-Month Total	688,493	635,079	477,710	3,869	1,805,151	^E 63,693	1,868,843	--	--
2010 6-Month Total	692,515	635,978	472,006	3,924	1,804,423	^E 63,851	1,868,274	--	--

^a Electricity retail sales to ultimate customers reported by electric utilities and, beginning in 1996, other energy service providers.

^b Commercial sector, including public street and highway lighting, interdepartmental sales, and other sales to public authorities.

^c Industrial sector. Through 2002, excludes agriculture and irrigation; beginning in 2003, includes agriculture and irrigation.

^d Transportation sector, including sales to railroads and railways.

^e The sum of "Residential," "Commercial," "Industrial," and "Transportation."

^f Use of electricity that is 1) self-generated, 2) produced by either the same entity that consumes the power or an affiliate, and 3) used in direct support of a service or industrial process located within the same facility or group of facilities that house the generating equipment. Direct use is exclusive of station use.

^g The sum of "Total Retail Sales" and "Direct Use."

^h "Commercial (Old)" is a discontinued series—data are for the commercial sector, excluding public street and highway lighting, interdepartmental sales, and other sales to public authorities.

ⁱ "Other (Old)" is a discontinued series—data are for public street and highway lighting, interdepartmental sales, other sales to public authorities, agriculture and irrigation, and transportation including railroads and railways.

E=Estimate. NA=Not available. --=Not applicable.

Notes: • Totals may not equal sum of components due to independent rounding. • Geographic coverage is the 50 States and the District of Columbia.

Web Page: See <http://www.eia.gov/totalenergy/data/monthly/#electricity> for all available data beginning in 1973.

Sources: See end of section.

Electricity

Note. Classification of Power Plants Into Energy-Use Sectors.

The U.S. Energy Information Administration (EIA) classifies power plants (both electricity-only and combined-heat-and-power plants) into energy-use sectors based on the North American Industry Classification System (NAICS), which replaced the Standard Industrial Classification (SIC) system in 1997. Plants with a NAICS code of 22 are assigned to the Electric Power Sector. Those with NAICS codes beginning with 11 (agriculture, forestry, fishing, and hunting); 21 (mining, including oil and gas extraction); 23 (construction); 31–33 (manufacturing); 2212 (natural gas distribution); and 22131 (water supply and irrigation systems) are assigned to the Industrial Sector. Those with all other codes are assigned to the Commercial Sector. Form EIA-860, “Annual Electric Generator Report,” asks respondents to indicate the primary purpose of the facility by assigning a NAICS code from the list at http://www.eia.gov/survey/form/eia_860/instructions_form.doc.

Table 7.1 Sources

Net Generation, Electric Power Sector

Table 7.2b.

Net Generation, Commercial and Industrial Sectors

Table 7.2c.

Imports and Exports, Electricity Trade With Canada and Mexico, 1973–1989

1973–September 1977: Unpublished Federal Power Commission data.

October 1977–1980: Unpublished Economic Regulatory Administration (ERA) data.

1981: U.S. Department of Energy (DOE), Office of Energy Emergency Operations, “Report on Electric Energy Exchanges with Canada and Mexico for Calendar Year 1981,” April 1982 (revised June 1982).

1982 and 1983: DOE, ERA, *Electricity Exchanges Across International Borders*.

1984–1986: DOE, ERA, *Electricity Transactions Across International Borders*.

1987 and 1988: DOE, ERA, Form ERA-781R, “Annual Report of International Electrical Export/Import Data.”

1989: DOE, Fossil Energy, Form FE-781R, “Annual Report of International Electrical Export/Import Data.”

Imports and Exports, Electricity Trade with Canada, 1990 Forward

National Energy Board of Canada, data for total sales (firm and interruptible; which exclude non-revenue, inadvertent, and service) from Canada to the United States, and data for total purchases (which exclude non-revenue, inadvertent,

and service) by Canada from the United States.

Imports and Exports, Electricity Trade with Mexico, 1990 Forward

DOE, Office of Electricity Delivery and Energy Reliability, Form OE-781R, “Monthly Electricity Imports and Exports Report,” and predecessor form. For 2001 forward, data from the California Independent System Operator are used in combination with the Form OE-781 values to estimate electricity trade with Mexico.

T&D Losses and Unaccounted for

Calculated as the sum of total net generation and imports minus end use and exports.

End Use

Table 7.6.

Table 7.2b Sources

1973–September 1977: Federal Power Commission, Form FPC-4, “Monthly Power Plant Report.”

October 1977–1981: Federal Energy Regulatory Commission, Form FPC-4, “Monthly Power Plant Report.”

1982–1988: U.S. Energy Information Administration (EIA), Form EIA-759, “Monthly Power Plant Report.”

1989–1997: EIA, Form EIA-759, “Monthly Power Plant Report,” and Form EIA-867, “Annual Nonutility Power Producer Report.”

1998–2000: EIA, Form EIA-759, “Monthly Power Plant Report,” and Form EIA-860B, “Annual Electric Generator Report–Nonutility.”

2001–2003: EIA, Form EIA-906, “Power Plant Report.”

2004–2007: EIA, Form EIA-906, “Power Plant Report,” and Form EIA-920, “Combined Heat and Power Plant Report.”

2008 forward: EIA, Form EIA-923, “Power Plant Operations Report.”

Table 7.2c Sources

Industrial Sector, Hydroelectric Power, 1973–1988

1973–September 1977: Federal Power Commission (FPC), Form FPC-4, “Monthly Power Plant Report,” for plants with generating capacity exceeding 10 megawatts, and FPC, Form FPC-12C, “Industrial Electric Generating Capacity,” for all other plants.

October 1977–1978: Federal Energy Regulatory Commission (FERC), Form FPC-4, “Monthly Power Plant Report,” for plants with generating capacity exceeding 10 megawatts, and FERC, Form FPC-12C, “Industrial Electric Generating Capacity,” for all other plants.

1979: FERC, Form FPC-4, “Monthly Power Plant Report,” for plants with generating capacity exceeding 10 megawatts, and U.S. Energy Information Administration (EIA) estimates for all other plants.

1980–1988: Estimated by EIA as the average generation over the 6-year period of 1974–1979.

All Data, 1989 Forward

1989–1997: EIA, Form EIA-867, “Annual Nonutility Power Producer Report.”

1998–2000: EIA, Form EIA-860B, “Annual Electric Generator Report—Nonutility.”

2001–2003: EIA, Form EIA-906, “Power Plant Report.”

2004–2007: EIA, Form EIA-906, “Power Plant Report,” and Form EIA-920, “Combined Heat and Power Plant Report.”

2008 forward: EIA, Form EIA-923, “Power Plant Operations Report.”

Table 7.3b Sources

1973–September 1977: Federal Power Commission, Form FPC-4, “Monthly Power Plant Report.”

October 1977–1981: Federal Energy Regulatory Commission, Form FPC-4, “Monthly Power Plant Report.”

1982–1988: U.S. Energy Information Administration (EIA), Form EIA-759, “Monthly Power Plant Report.”

1989–1997: EIA, Form EIA-759, “Monthly Power Plant Report,” and Form EIA-867, “Annual Nonutility Power Producer Report.”

1998–2000: EIA, Form EIA-759, “Monthly Power Plant Report,” and Form EIA-860B, “Annual Electric Generator Report—Nonutility.”

2001–2003: EIA, Form EIA-906, “Power Plant Report.”

2004–2007: EIA, Form EIA-906, “Power Plant Report,” and Form EIA-920, “Combined Heat and Power Plant Report.”

2008 forward: EIA, Form EIA-923, “Power Plant Operations Report.”

Table 7.4b Sources

1973–September 1977: Federal Power Commission, Form FPC-4, “Monthly Power Plant Report.”

October 1977–1981: Federal Energy Regulatory Commission, Form FPC-4, “Monthly Power Plant Report.”

1982–1988: U.S. Energy Information Administration (EIA), Form EIA-759, “Monthly Power Plant Report.”

1989–1997: EIA, Form EIA-759, “Monthly Power Plant Report,” and Form EIA-867, “Annual Nonutility Power Producer Report.”

1998–2000: EIA, Form EIA-759, “Monthly Power Plant Report,” and Form EIA-860B, “Annual Electric Generator Report—Nonutility.”

2001–2003: EIA, Form EIA-906, “Power Plant Report.”

2004–2007: EIA, Form EIA-906, “Power Plant Report,” and Form EIA-920, “Combined Heat and Power Plant Report.”

2008 forward: EIA, Form EIA-923, “Power Plant Operations Report.”

Table 7.6 Sources

Retail Sales, Residential and Industrial

1973–September 1977: Federal Power Commission, Form FPC-5, “Monthly Statement of Electric Operating Revenue and Income.”

October 1977–February 1980: Federal Energy Regulatory Commission (FERC), Form FPC-5, “Monthly Statement of Electric Operating Revenue and Income.”

March 1980–1982: FERC, Form FPC-5, “Electric Utility Company Monthly Statement.”

1983: U.S. Energy Information Administration (EIA), Form EIA-826, “Electric Utility Company Monthly Statement.”

1984–1997: EIA, Form EIA-861, “Annual Electric Utility Report.”

1998 forward: EIA, *Electric Power Monthly*, August 2012, Table 5.1.

Retail Sales, Commercial

1973–2002: Estimated by EIA as the sum of “Commercial (Old)” and the non-transportation portion of “Other (Old).” See estimation methodology at

http://www.eia.gov/states/sep_use/notes/use_elec.pdf.

2003 forward: EIA, *Electric Power Monthly*, August 2012, Table 5.1.

Retail Sales, Transportation

1973–2002: Estimated by EIA as the transportation portion of “Other (Old).” See estimation methodology at

http://www.eia.gov/states/sep_use/notes/use_elec.pdf.

2003 forward: EIA, *Electric Power Monthly*, August 2012, Table 5.1.

Direct Use, Annual

1989–1996: EIA, Form EIA-867, “Annual Nonutility Power Producer Report.”

1997–2010: EIA, *Electric Power Annual 2010*, November 2011, Table 7.2.

2011: Sum of monthly estimates.

Direct Use, Monthly

Annual shares are calculated as annual direct use divided by annual commercial and industrial net generation (on Table 7.1). Then monthly direct use estimates are calculated as the annual share multiplied by the monthly commercial and industrial net generation values. For 2011 and 2012, the 2010 annual share is used.

Discontinued Retail Sales Series Commercial (Old) and Other (Old)

1973–2002: See sources for “Residential” and “Industrial.”

THIS PAGE INTENTIONALLY LEFT BLANK