



## SATELLITE VIEW

In 1972, Landsat began transmitting views of our planet back to Earth. The first Landsat and its five successors (two of them are in operation now) have delivered millions of images from a satellite orbiting 438 miles above the Earth. Landsat's orbit enables a new image to be recorded every sixteen days of any area on the Earth's surface. The satellite view on this map was created from a mosaic of many Landsat images joined together. Colors were selected to better show variations in the landscape. Relief shading was added to enhance the terrain and make the landforms of each state more apparent.

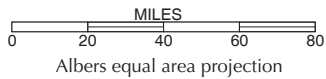
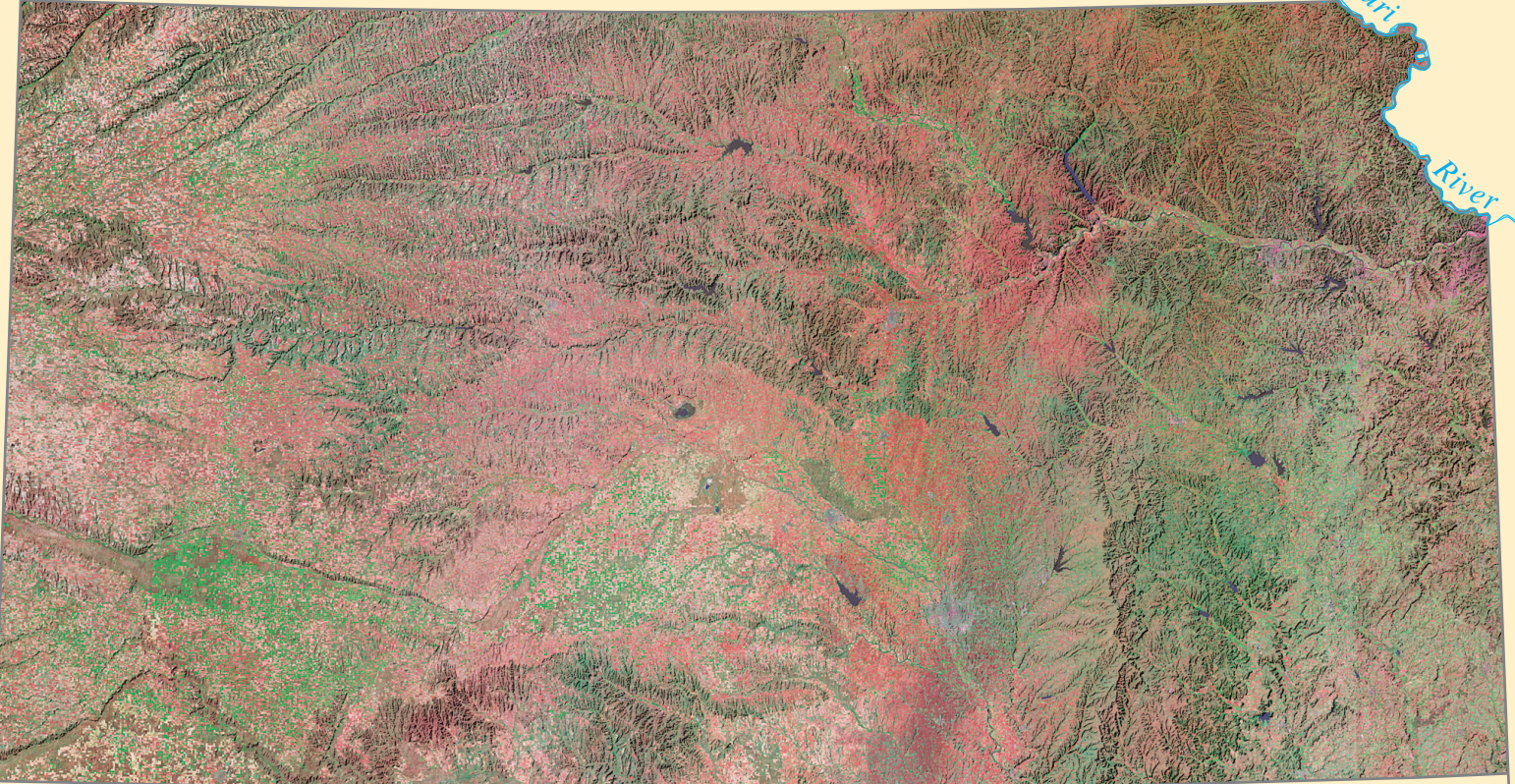
CO

NEBRASKA

IOWA

MISSOURI

Missouri River



TEXAS

OKLAHOMA