



I-35 Reconstruction Project

Business Community Meeting West – Abbott

Jodi Wheatley, I-35 Information Specialist, TxDOT

Richard Skopik, PE, Waco District Engineer, TxDOT

Tony Moran, PE, Hillsboro/Marlin Area Engineer, TxDOT

August 24, 2011 – West Community Center





Business Community Importance

- **Your Importance**
 - Backbone of Texas' economy
 - Key stakeholder in the I-35 corridor
 - Directly impacted by construction
- **Therefore, TxDOT Wants to...**
 - Engage you throughout I-35 reconstruction project
 - Strive for a transparent construction process



Business Community Importance

- **Our Goals for This Meeting:**
 - Keep you informed
 - Listen to your questions and concerns
 - Answer your questions
 - Seek solutions to your concerns
 - Present avenues for you to stay informed
 - Receive your ideas for future meetings



I-35 Construction: Central Texas Overview

Richard Skopik, PE

Waco District Engineer

TxDOT





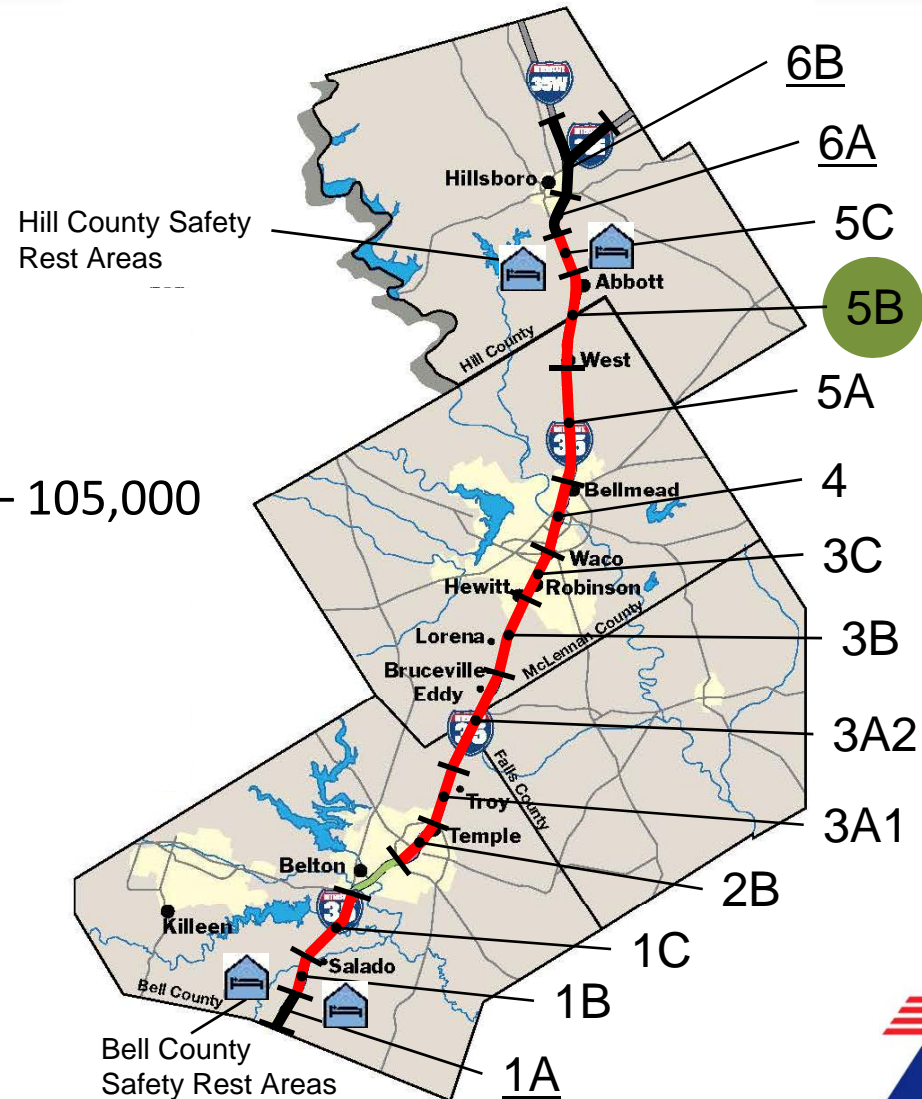
I-35 Construction: Central Texas Overview

- **Purpose of I-35 Construction**
 - Maintain & enhance corridor's economic attractiveness
 - Prepare for future traffic growth
 - Enhance safety
 - Modern roadway design
 - Upgraded exit + entrance ramps
 - 1-way frontage roads
 - Reduce congestion
 - Expand to 6 lanes
 - Continuous frontage roads for improved access + diversion
 - Real-time traveler information



I-35 Construction: Central Texas Overview

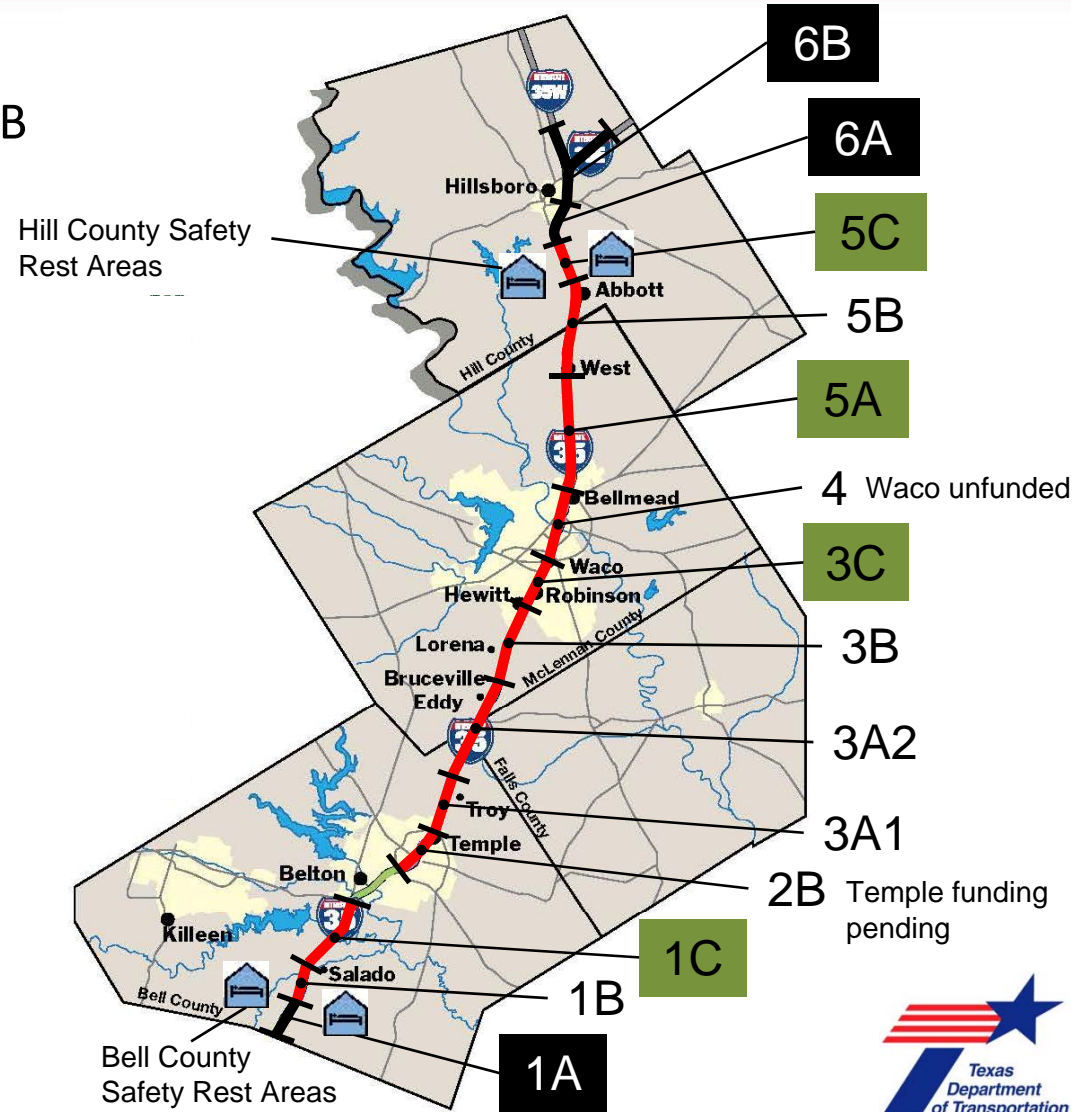
- 96 miles
- 14 sections
- 2 safety rest areas
- Construction Cost = \$1.4B
- Daily Traffic Volumes: 55,000 – 105,000
- Trucks: 25% – 30%





I-35 Construction: Central Texas Overview

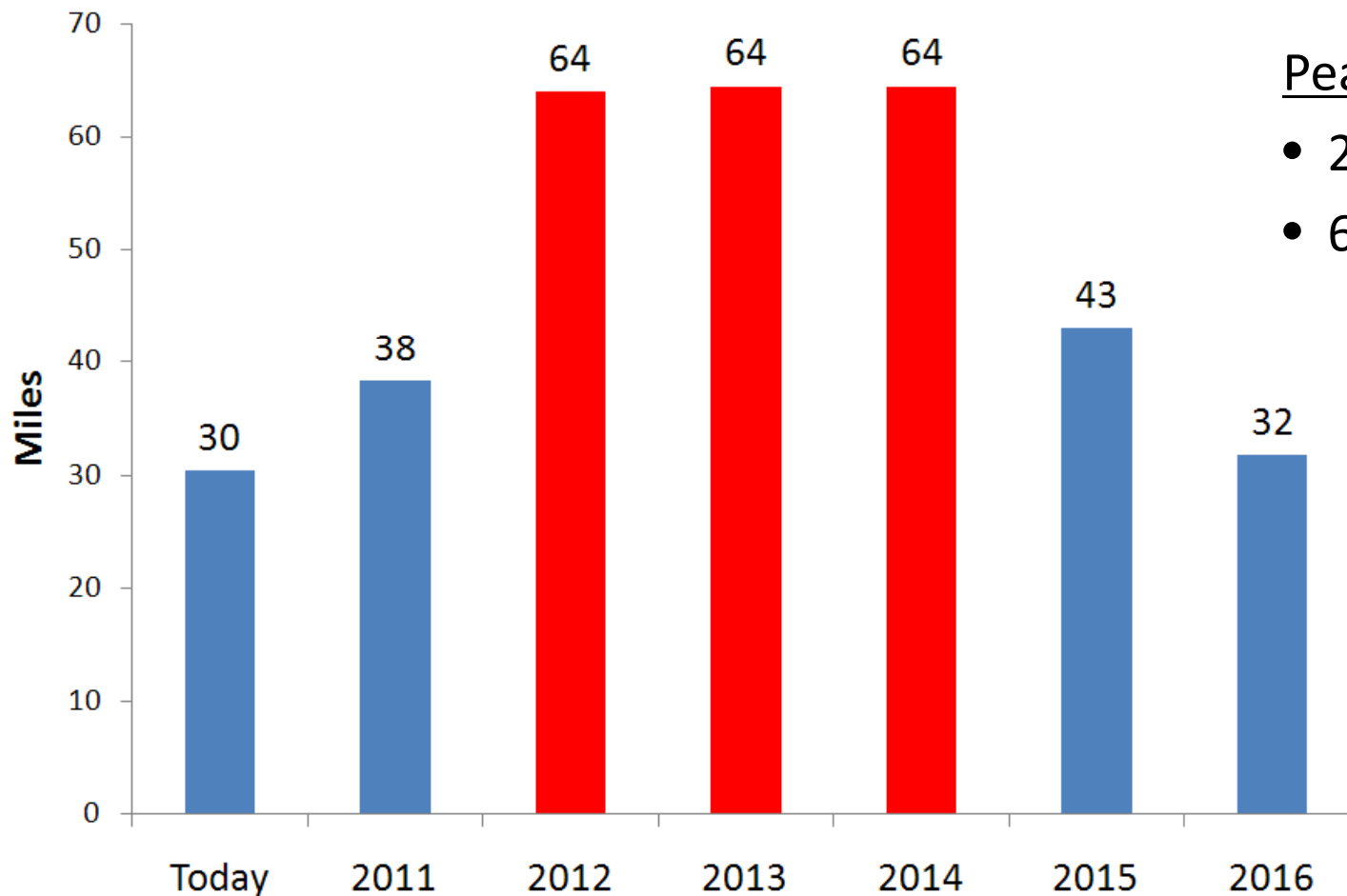
- Completed: 1A, 6A (mostly), 6B
- Active Today: 1C, 3C, 5A, 5C
- 2 safety rest areas
- Complete: Late 2016 (Temple last section)





I-35 Construction: Central Texas Overview

I-35 Miles Under Construction



Peak Construction

- 2012 – 2014
- 64 miles



I-35 Construction: Central Texas Overview

- **Primary Changes**

- 3 lanes in each direction on I-35
- Added I-35 crossings
- Added and relocated ramps
- 1-way continuous frontage roads
- U-turns at selected crossings
- Intelligent Transportation System (ITS)
- Aesthetics
- Illumination
- Truck lane restrictions

Brazos River Frontage Road Bridges



Wall Murals



I-35 Construction: Central Texas Overview

- **Your Communication Tools**

- Quarterly business community meetings
- Monthly newsletter
- www.My35.org (*all things I-35*)
- Dedicated I-35 project staff
 - Public Information staff to provide information + answer questions
 - Mobility Coordinator to assist w/site access + circulation
 - TxDOT construction and contractor (Webber, LLC) staff to make it happen on the ground



I-35 Construction: Abbott to West

Tony Moran, PE
Hillsboro/Marlin Area Engineer
TxDOT





I-35 Construction: Abbott to West

- **Measures in Place to Reduce Construction Impacts**
 - Access to your business must be maintained
 - Incentives to finish high priority work areas early
 - FM 1242, CR 3102, Oak Street
 - 6 day work week
 - Freeway lane closure restrictions
 - Sun, 10pm – 7am; Mon-Fri, 7pm – 7am
 - Blackout dates: Texas/OU football, Thanksgiving, etc.
 - Contractor assessed lane rental fees

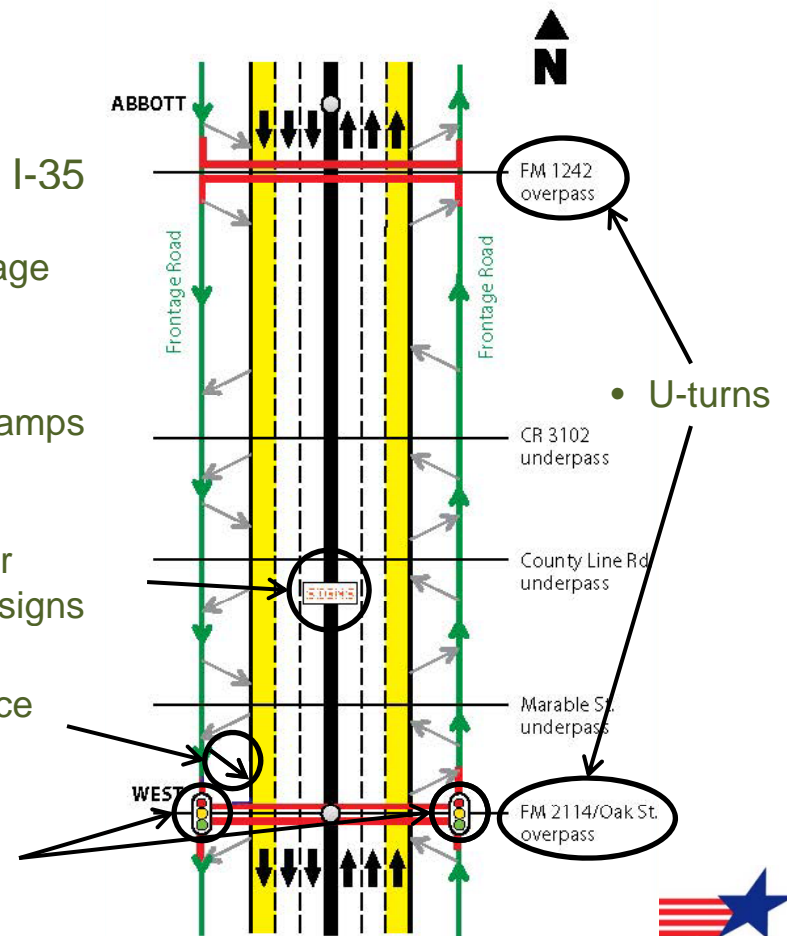


I-35 Construction: Abbott to West

• Construction Overview

- Boundaries: FM 1242 to Oak
- 3 year project (approximately)
Sep. 2011 – Fall 2014
- Length: 8 miles
- Construction Cost: \$101 M
- Contractor: Webber, LLC

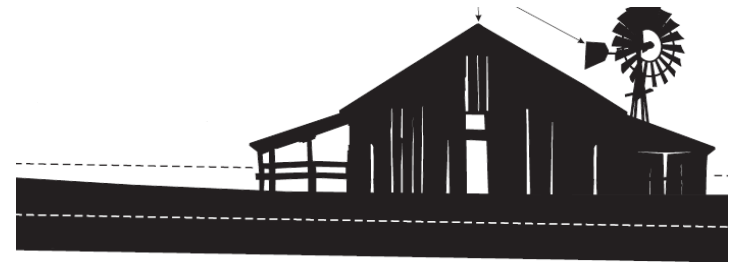
- 6 lanes on I-35
- 1-way frontage roads
- Relocated ramps
- New traveler information signs
- New entrance ramp
- New signal
- Wall murals





I-35 Construction: Abbott to West

- Wall Murals: Abbott (FM 1242/I-35)



I-35

FM 1242



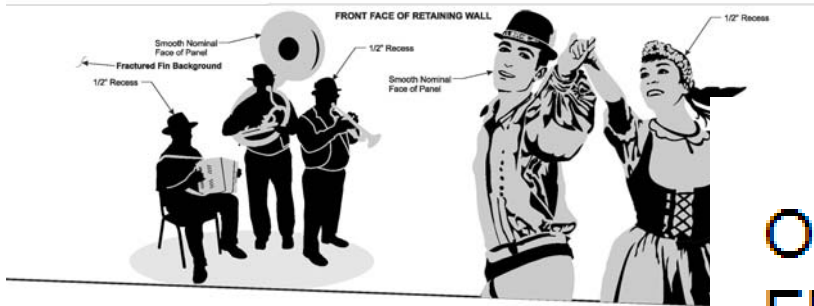
Each Mural: Height ~15-18 ft., Length ~35 ft.



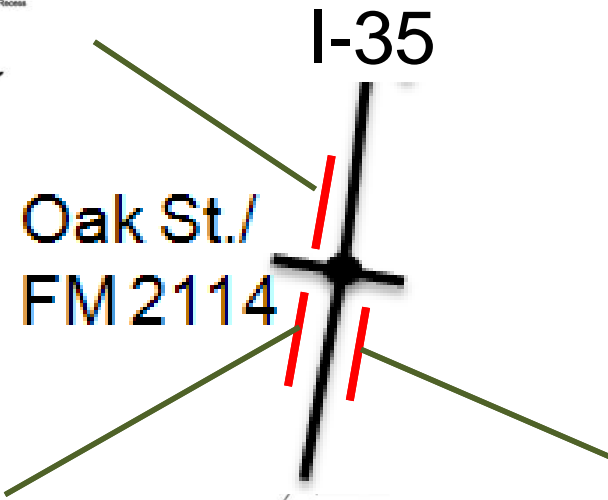


I-35 Construction: Abbott to West

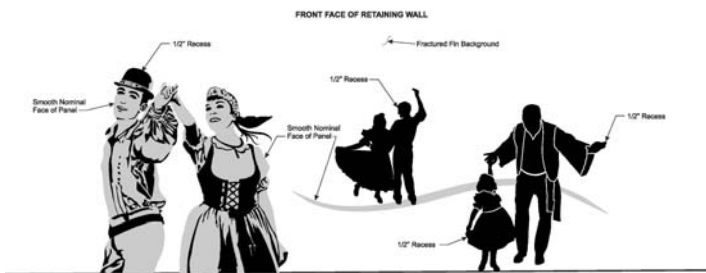
- Wall Murals: West (Oak St./I-35)



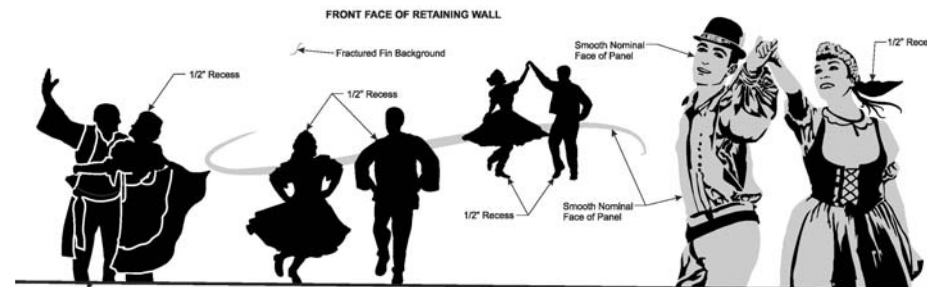
Height ~20 ft., Length ~45 ft.



Height ~20 ft., Length ~70 ft.



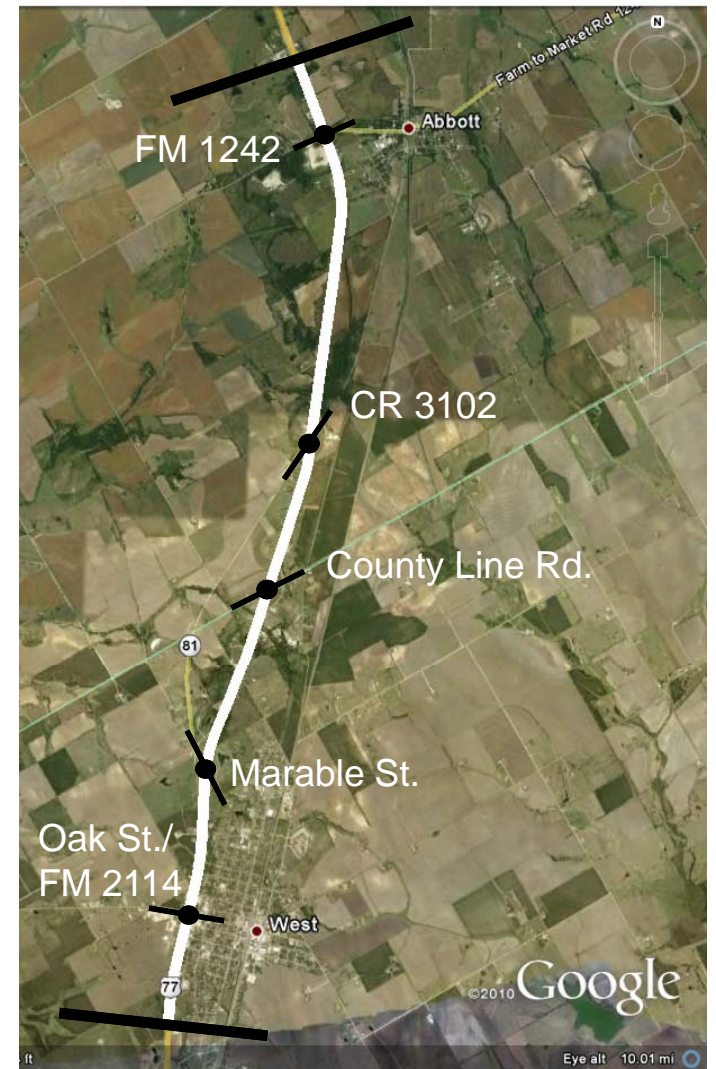
Height ~20 ft., Length ~50 ft.





I-35 Construction: Abbott to West

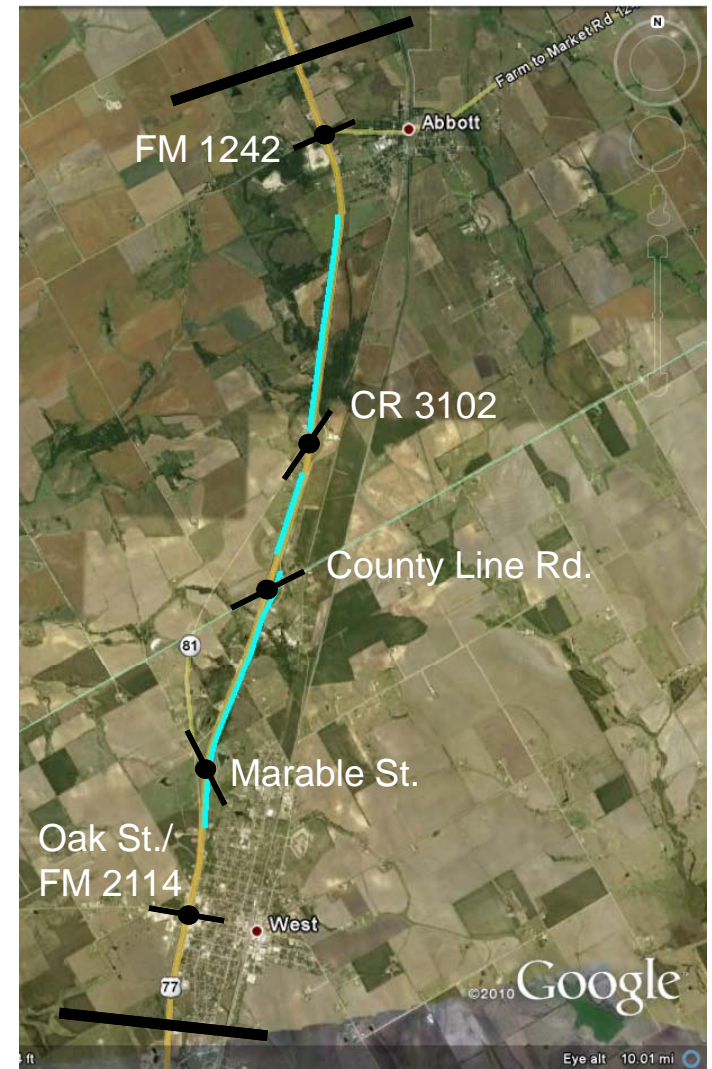
- Construction Sequencing
 - Project Limits





I-35 Construction: Abbott to West

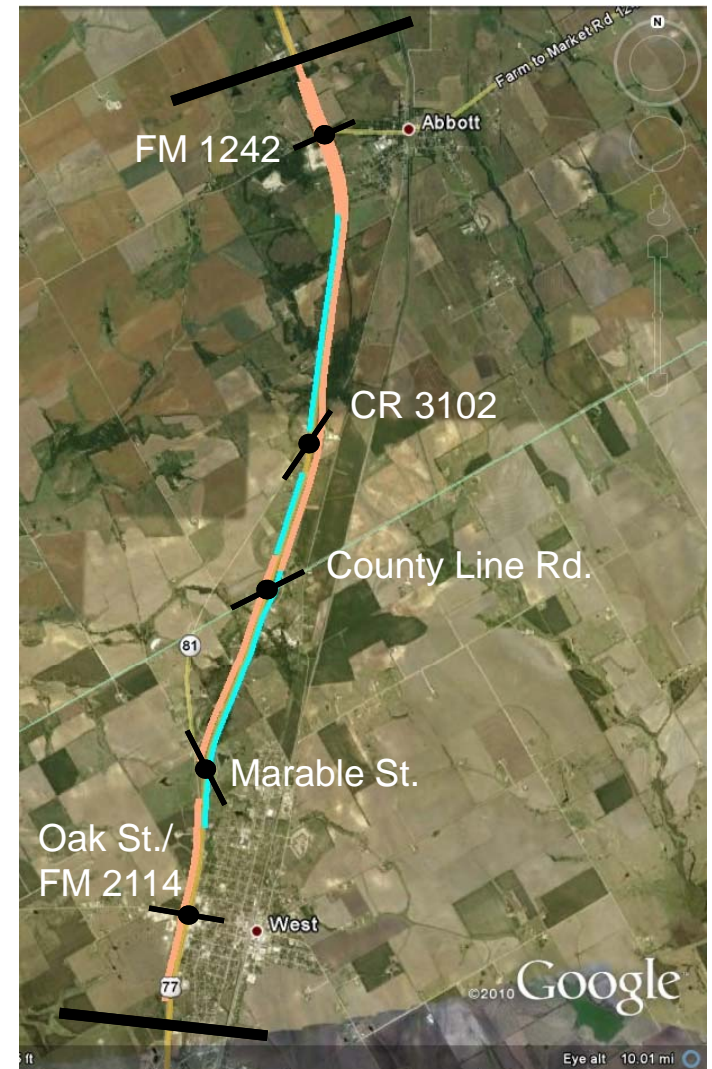
- Construction Sequencing
 - Start: Sep. 2011
 - Initial construction areas
 - SB FR
 - FM 1242 to CR 3102
 - CR 3102 to County Line Rd.
 - NB FR
 - Marable St. to County Line Rd.





I-35 Construction: Abbott to West

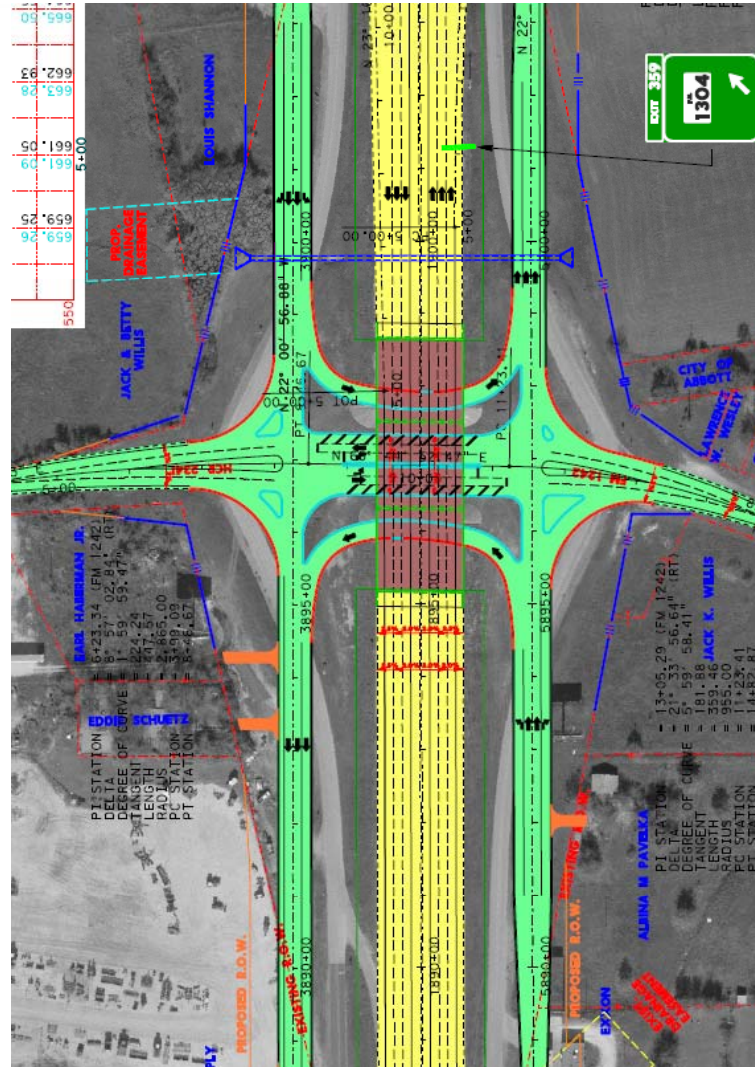
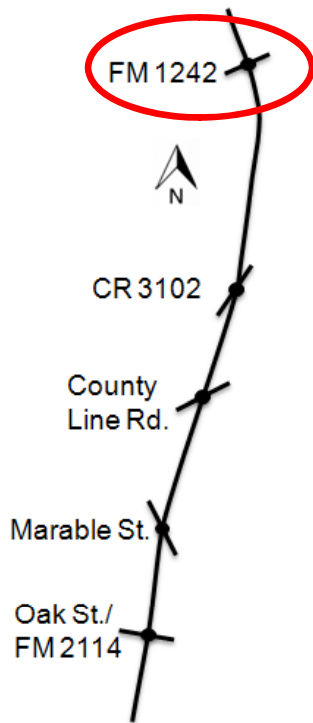
- Construction Sequencing
 - Start: Early 2012
 - Additional construction areas
 - SB FR:
 - FM 1242
 - County Line Rd. to Marable St.
 - Marable St. to South Project Limit
 - NB FR:
 - County Line Rd. to FM 1242





I-35 Construction: Abbott to West

FM 1242



- Add U-turns
- Add turn lanes
- Remove frontage road curvature

Schedule Highlights

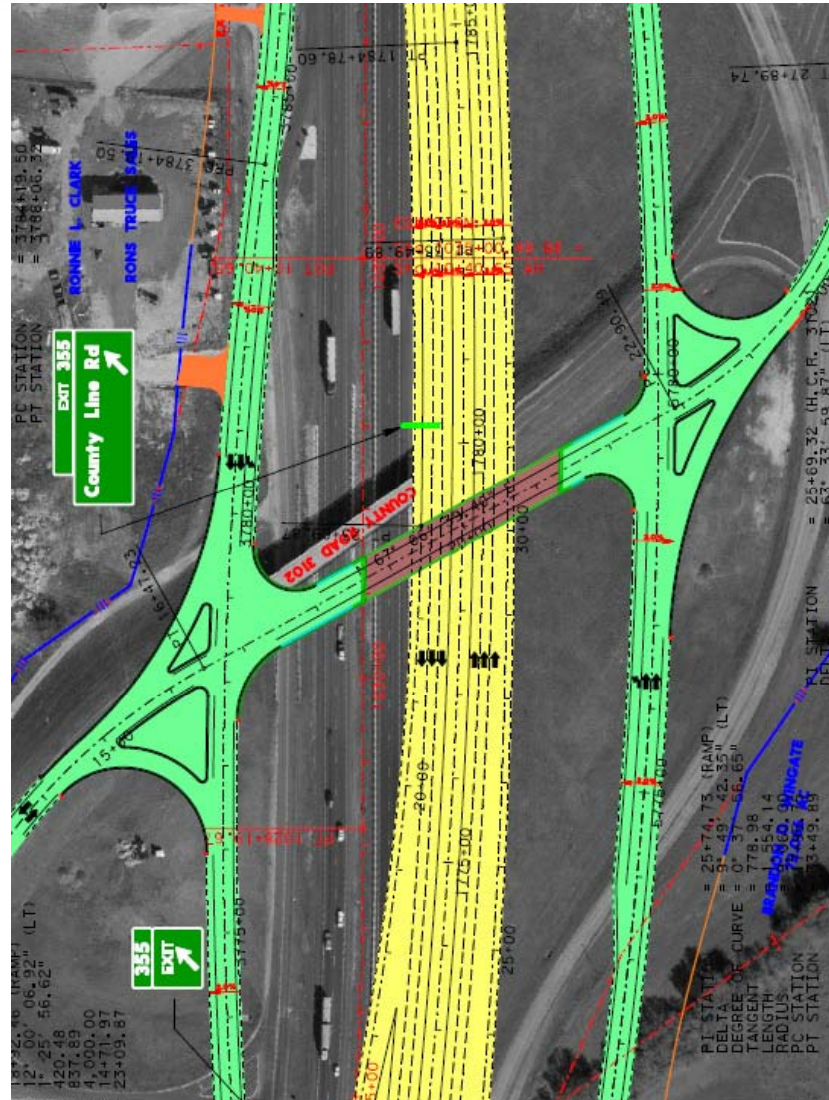
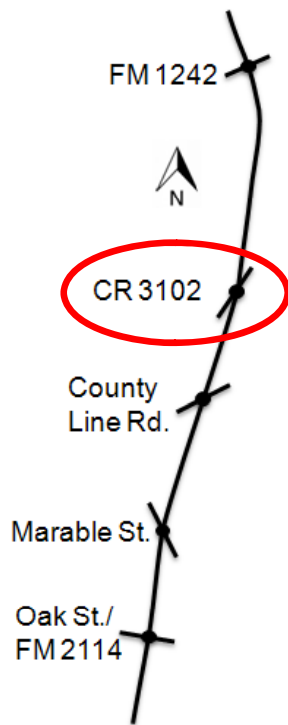
- Fall 2011: begin frontage road work
- Mid 2013: begin work on I-35 overpass bridge
- Mid 2014: begin work on FM 1242 (half sections, U-turns)
- Late 2014: complete FM 1242





I-35 Construction: Abbott to West

CR 3102



Changes

- Add turn lanes
- Remove frontage road curvature

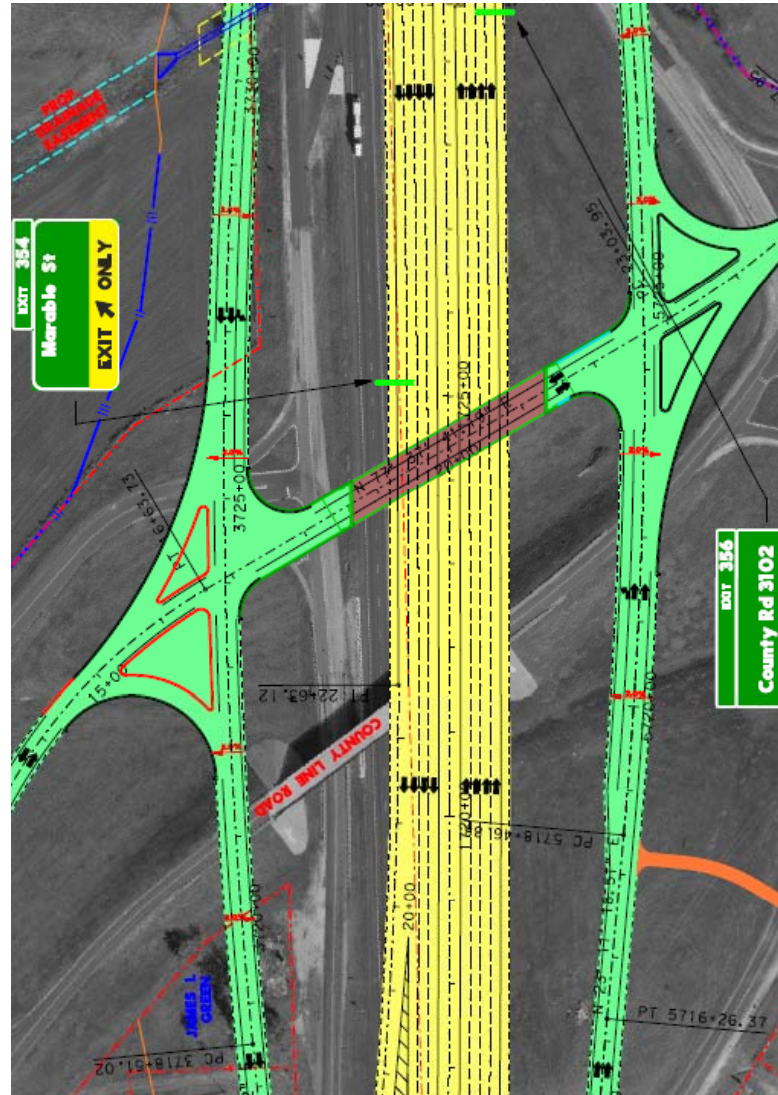
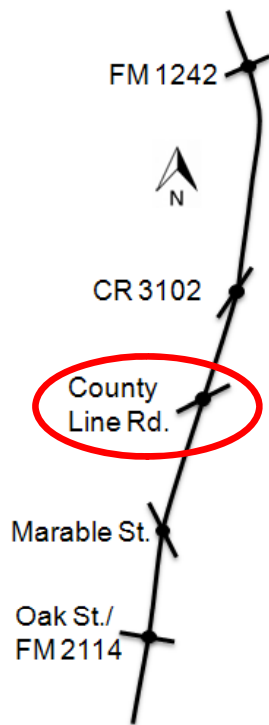
Schedule Highlights

- Fall 2011: begin frontage road work
- Late 2013: demo bridge
- 2014: CR 3102 closed
- Late 2014: open new bridge



I-35 Construction: Abbott to West

County Line Rd.



Changes

- Add turn lanes
- Remove frontage road curvature

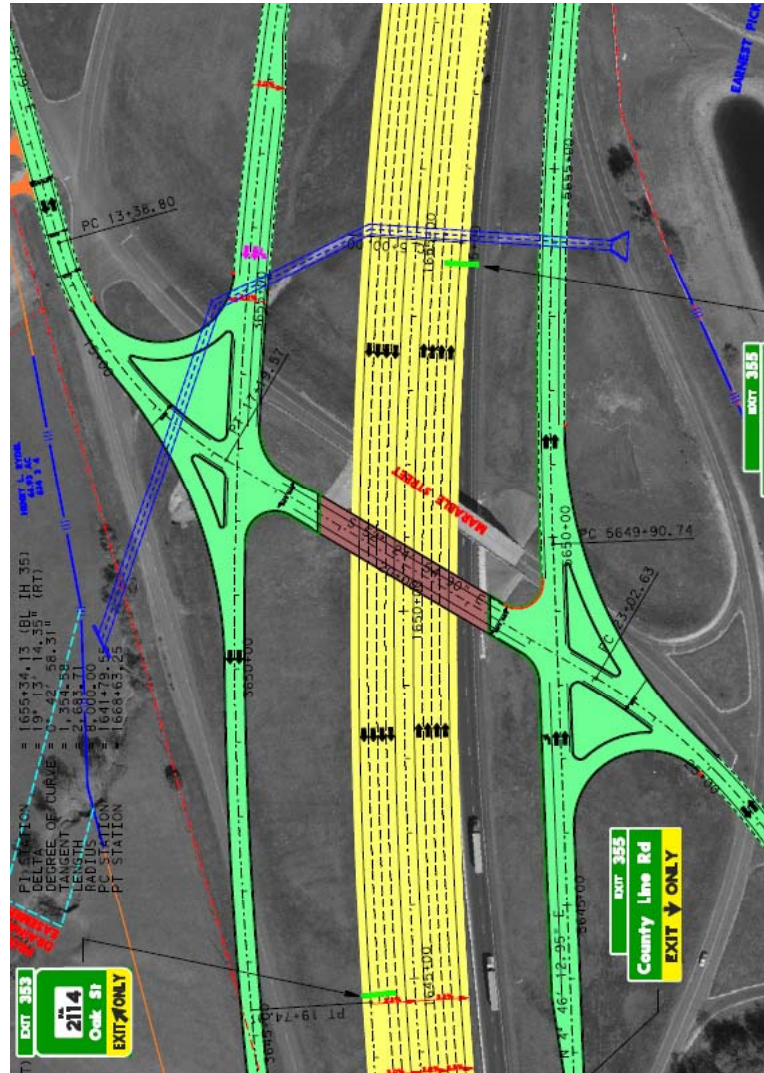
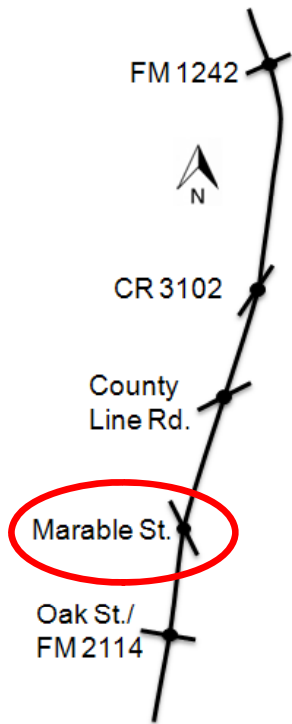
Schedule Highlights

- Fall 2011: begin FR work
- Late 2013: open new bridge
- Late 2013: demo existing bridge (after new bridge opened)



I-35 Construction: Abbott to West

Marable St.



Changes

- Add turn lanes
- Remove frontage road curvature

Schedule Highlights

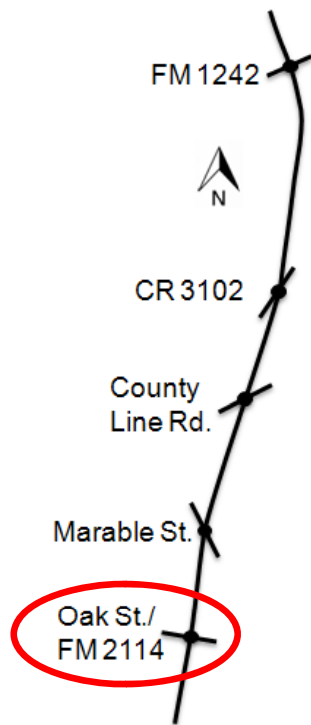
- Fall 2011
 - 1st bridge work in project
 - Begin NB+SB FR work
- Early 2012: open new bridge





I-35 Construction: Abbott to West

Oak St./FM 2114



Changes

- Add U-turns
- Add turn lanes
- Add traffic signal

Schedule Highlights

- Fall 2011: begin SB FR work
(built west of existing SB FR)
- Mid 2012: SB FR 1-way
- Late 2012
 - Begin NB FR work
 - NB FR 1-way



I-35 Construction: Abbott to West

Open Discussion by Schematics