



I-35 Reconstruction Project

Business Community Meeting Troy – Hillsboro

Jodi Wheatley, I-35 Information Specialist, TxDOT

May 23, 2012 – Waco Chamber of Commerce



Business Community Importance

- **Your Importance**
 - Backbone of Texas' economy
 - Key stakeholder in the I-35 corridor
 - Directly impacted by construction
- **Therefore, TxDOT Wants to...**
 - Engage you throughout I-35 reconstruction project
 - Strive for a transparent construction process



Business Community Importance

- **Our Goals for This Meeting:**
 - Keep you informed
 - Listen to your questions and concerns
 - Answer your questions
 - Seek solutions to your concerns
 - Present avenues for you to stay informed
 - Receive your ideas for future meetings



I-35 Construction: Central Texas Overview



I-35 Construction: Purpose

- Maintain and enhance corridor's economic attractiveness
- Prepare for future traffic growth
- Enhance safety
 - Modern roadway design
 - Upgraded exit and entrance ramps
 - One-way frontage roads
- Reduce congestion
 - Expand to 6 lanes
 - Continuous frontage roads for improved access + diversion
 - Real-time traveler information






Central Texas Overview

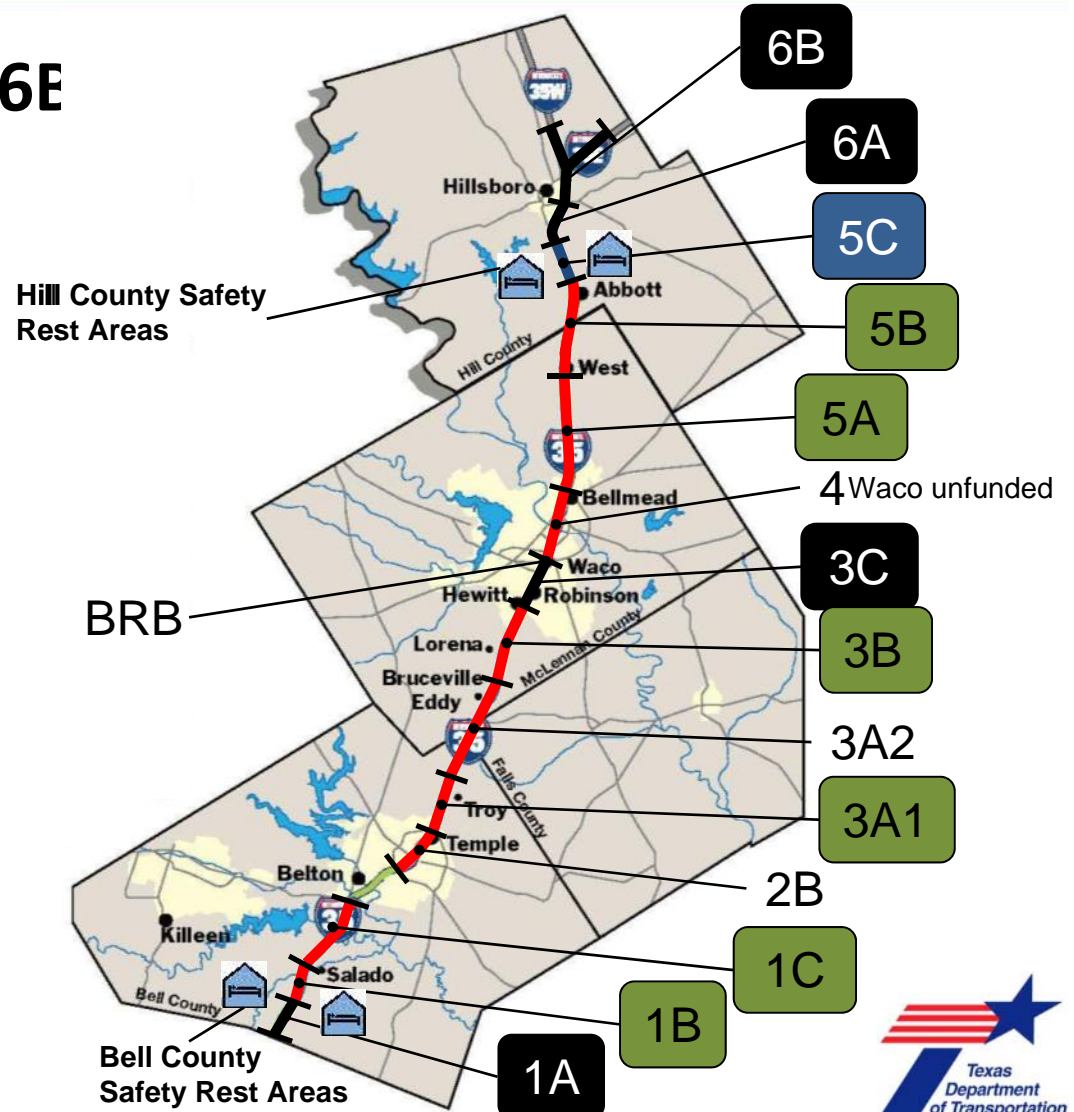
- Last 96 miles – Central Texas
- 14 segments/17 projects
- Costs: approx. \$2.1 billion
 - Construction = \$1.6B
 - Right-of-way = \$410M+
 - Utility relocation = \$110M
- Complete in 2017
- Traffic volumes
 - 55,000 – 111,000 vehicles/day
 - Trucks: 25% – 30%



Central Texas Overview

- Complete: 1A, 3C, 6A, 6E
- Nearly complete: 5C
- Active today:
1B, 1C, 3A1, 3B, 5A, 5B
- 2 safety rest areas
- Complete in early 2017

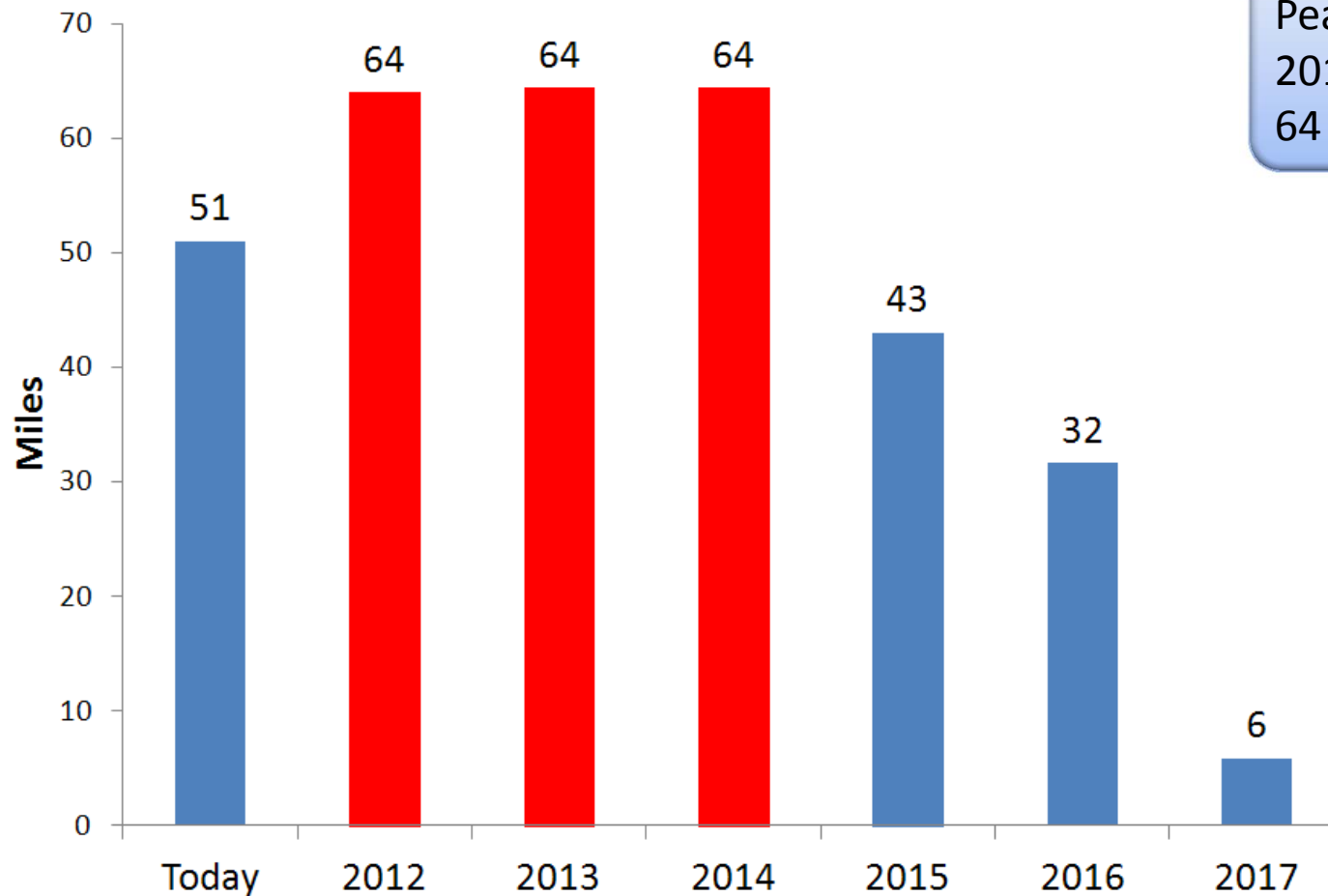
-  Completed
-  Nearly completed
-  Active





Central Texas Overview

I-35 Miles Under Construction



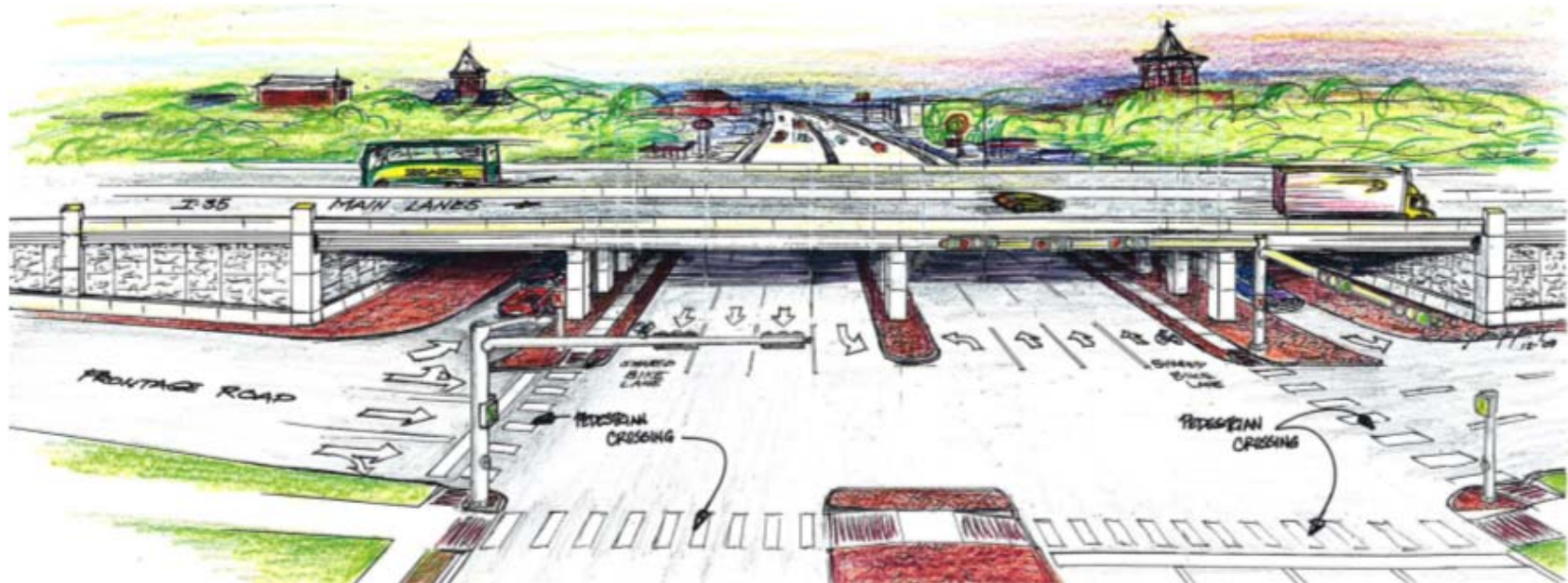
Peak Construction:
2012 – 2014
64 miles





Central Texas Overview

- 3 lanes in each direction on I-35
- Added I-35 crossings
- Added and relocated ramps
- 1-way continuous frontage roads
- U-turns at selected crossings
- Safety rest areas
- Technology / ITS
- Truck lane restrictions
- Aesthetics
- “Green” initiatives





Reducing Impacts/Increasing Safety

- **Access to your business must be maintained**
- **Mainlane closures at night only (or fees apply)**
 - **Minimizes delays for drivers**
 - **Increases safety for drivers**
 - **Increases safety for workers**





Communication Tools

- Web site (www.my35.org)
- Newsletter
- Business community
- Dedicated project pages
 - Public information and answers to questions
 - Mobility coordination
 - TxDOT construction updates and how to get the ground



My35

www.my35.org/default.htm

Search

GO

HOME

ABOUT MY 35 | PUBLIC INVOLVEMENT | PROJECTS | NEWS | FAQs | CONTACT US

We Value Your Opinion

Fill Out a Short Survey About TxDOT.gov

**CONSTRUCTION AHEAD:
EXPANDING I-35 MAIN STREET TEXAS**

The Texas Department of Transportation has partnered with the Texas Legislature and the U.S. Congress to expand I-35 Main Street Texas. Over the next few years, I-35 will be widened to six lanes through Central Texas. Stay on top of the work so you can plan your travel efficiently.

- [Road Conditions](#)
- [My35 Newsletter](#)
- [Central Texas Business Community](#)

PLANNING FOR THE FUTURE

Citizens, local officials and businesses are shaping the future of the I-35 corridor by providing vital input on what is important to their communities and economies. Learn more about the corridor plans these committees are developing.

- [I-35 Citizen Committees and Planning Workshops](#)

About MY 35 | Public Involvement | Projects | News
FAQs | Contact Us | Home

YouTube | Facebook | RSS | Twitter | Texas

Copyright 2012 Texas Department of Transportation. All rights reserved.



Automated Notifications

- Daily Closures
- Closure Updates
- 7-Day Outlooks
- High-Impact Only

DAILY

My INTERSTATE 35 **HIGH-IMPACT CLOSURES CENTRAL TEXAS**

LISTING COVERS 7AM MONDAY, MAY 7 THROUGH 7AM MONDAY, MAY 21
SIGN UP FOR ADDITIONAL LANE CLOSURE NOTIFICATIONS AT MY35.ORG

This listing is subject to change due to inclement weather or other unforeseen events that may occur.

NB NORTHBOUND **SB** SOUTHBOUND **CR** CROSS ROAD **HIGH IMPACT CLOSURE**

AT A GLANCE **TEMPLE TO SALADO**

TEMPLE to SALADO

- I-35 at Shanklin Rd
- I-35 at Shanklin Rd

SIGN UP! for closure updates

CONTACT

Jodi Wheatley
I-35 Information Specialist
TxDOT Waco District
100 S. Loop Dr.
Waco, TX 76794

NB I-35 at Shanklin Rd
ROADWAY: I-35 Mainlanes (starting at MM 290.0)
CLOSED: All lanes closed
TIME: 5/7 - 5/8, 7PM - 7AM
ACTIVITY: Work on Shanklin Rd crossover bridge. Traffic detoured to frontage road.

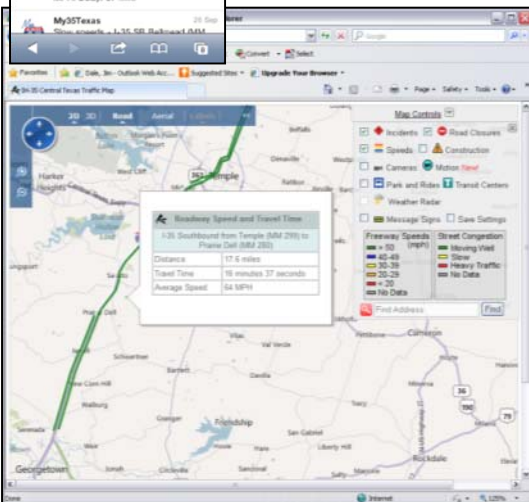
SB I-35 at Shanklin Rd
ROADWAY: I-35 Mainlanes (starting at MM 290.0)
CLOSED: All lanes closed
TIME: 5/7 - 5/8, 7PM - 7AM
ACTIVITY: Work on Shanklin Rd crossover bridge. Traffic detoured to frontage road.

SIGN UP! for closure updates **CR** 4/23/12 - 4/25/12, 9PM - 7AM
ACTIVITY: Roadway maintenance.

My INTERSTATE 35



Coming Soon...Traveler Information

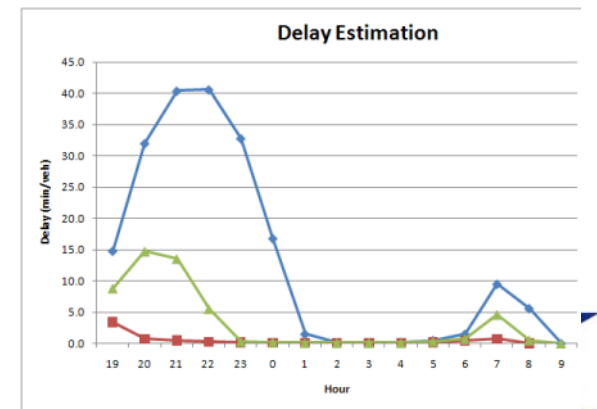


Disseminate Info

Monitor Conditions

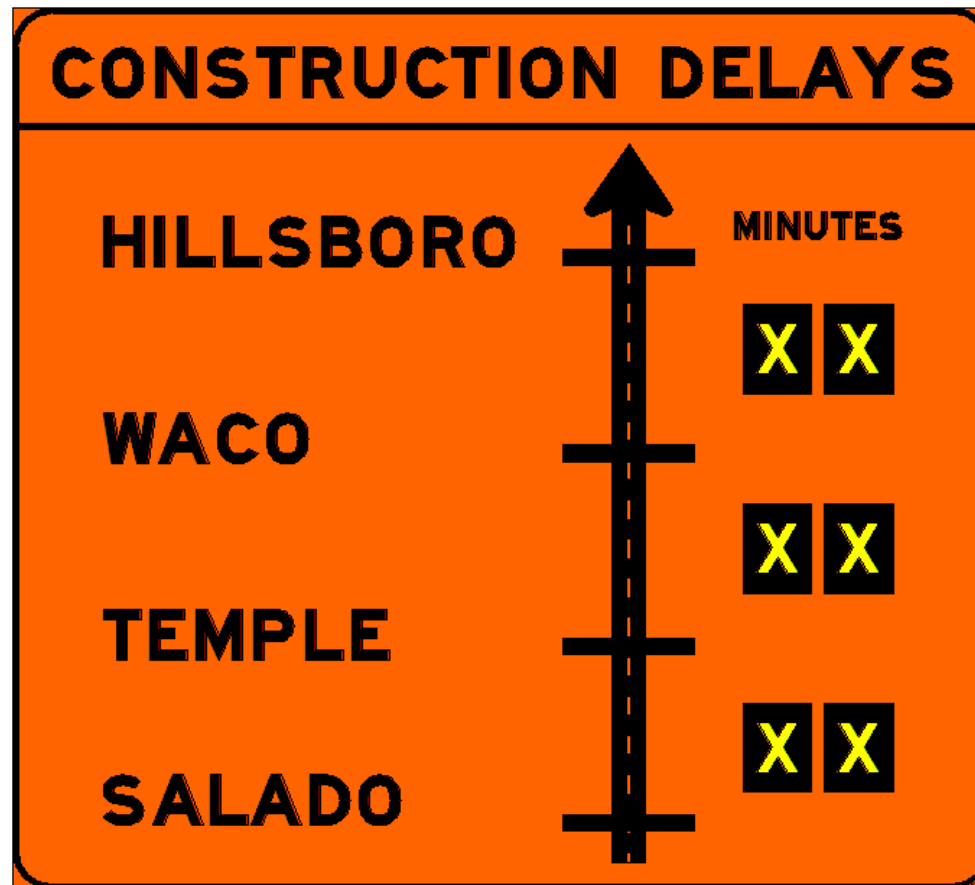


Estimate Delay





Coming Soon...Travel Delay Signs

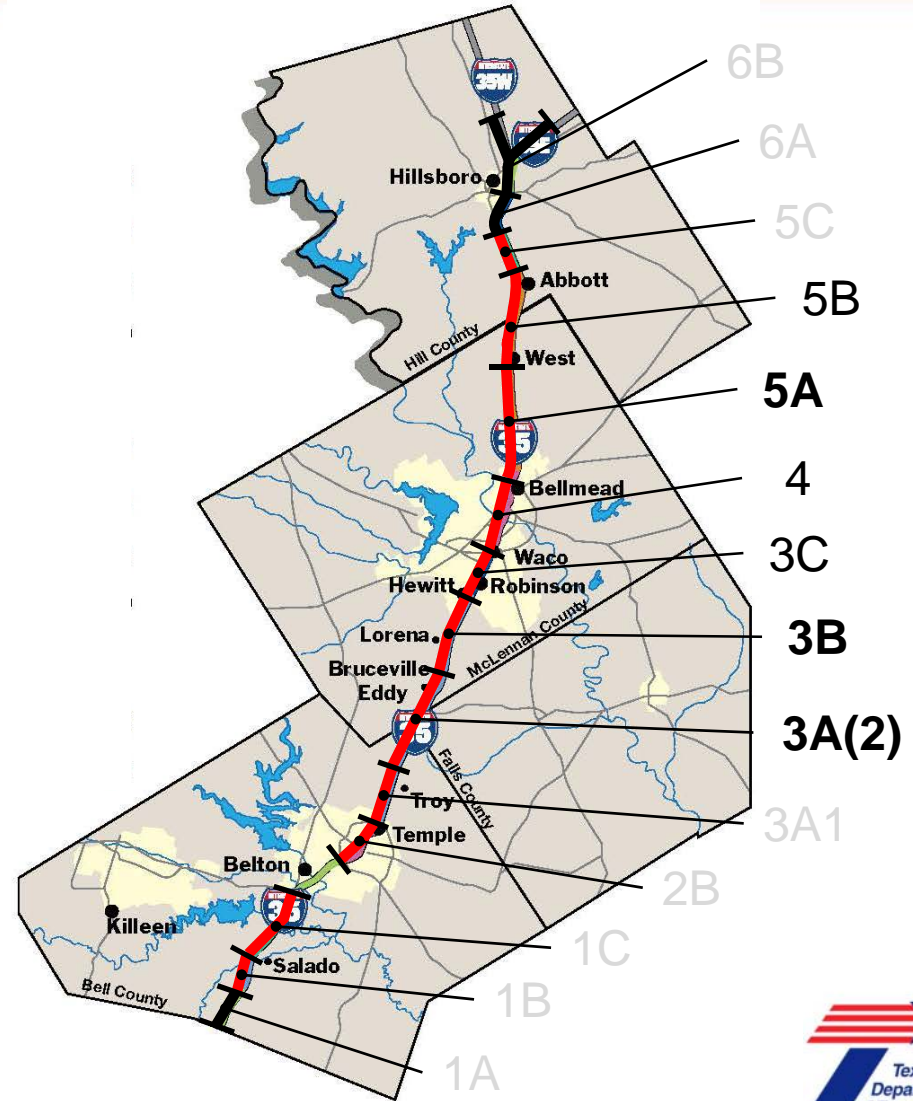




I-35 Construction: McLennan County

McLennan Co. Projects

- Six projects:
 - 5B portion
 - 5A
 - 4
 - 3C
 - 3B
 - 3A(2) portion
- Presentation focuses on 3A(2), 3B, 5A
- Questions welcomed on any project by schematics





I-35 Construction: McLennan County

Clayton Zacha

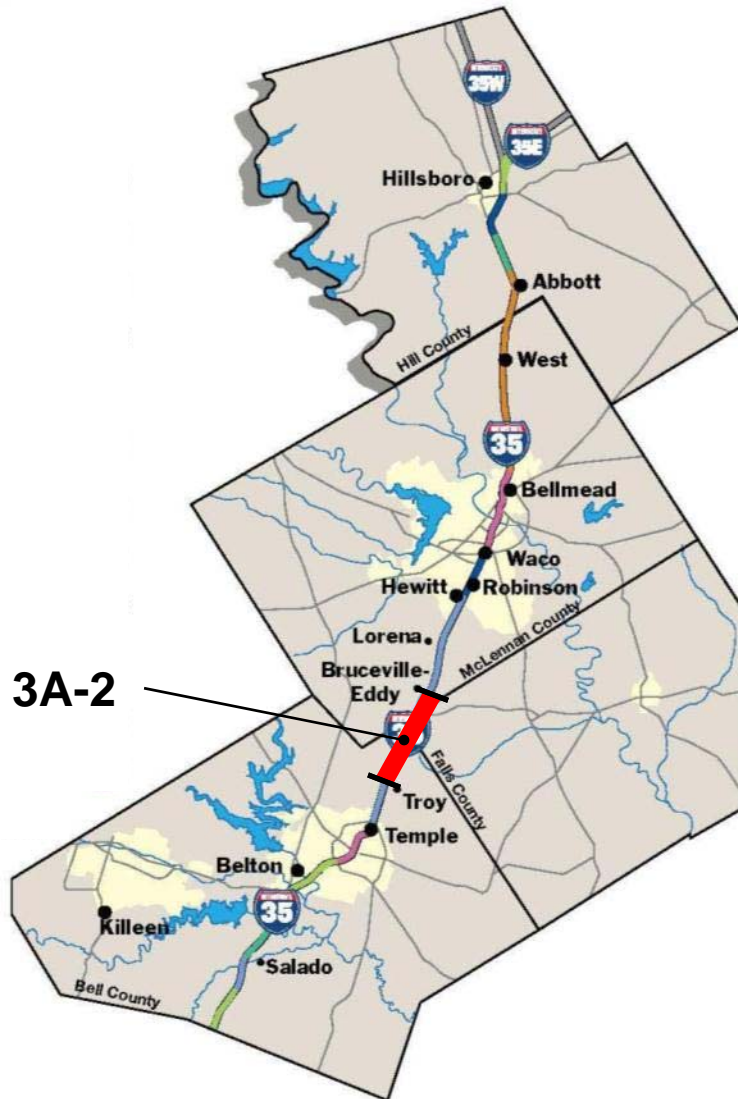
3A-2 Project Manager

TxDOT





Project 3A-2: Troy to Bruceville/Eddy



Section Facts

N. Troy City Limit to Woodlawn Rd.

Construction Start: June 2012

Anticipated Completion: Summer 2016

Length: 9.6 miles

Cost: \$120.7 million

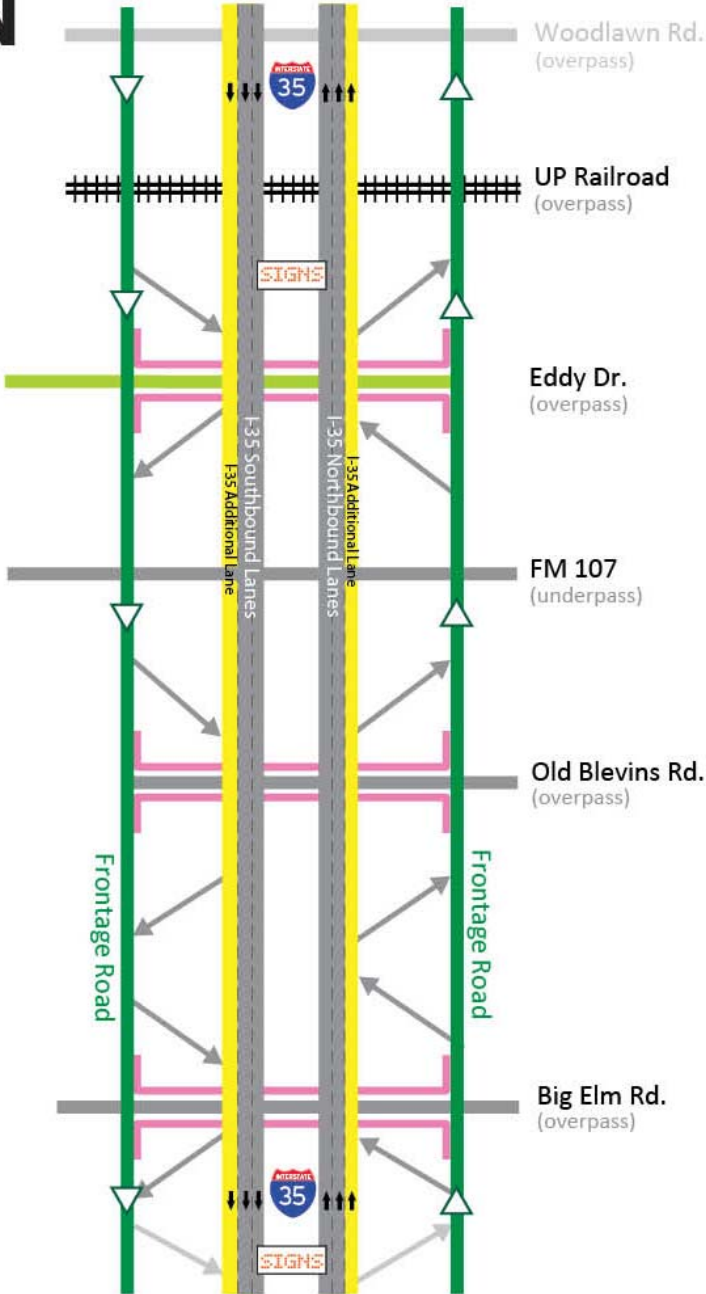
Contractor: James Construction Group






Troy to Bruceville/Eddy (3A-2)

SECTION ENHANCEMENTS



 Expansion from 2 to 3 lanes in each direction

 Converted to one-way frontage roads to improve safety

 Upgraded on-/off-ramps

 New crossover

 U-turns added

 Four new electronic message signs



Project 3A-2: Next Six Months

- **Start on SB frontage road around Big Elm Creek**
 - Local traffic only will be allowed to use the frontage road
 - Begin demo of frontage road bridge over Big Elm Creek
 - All non-local traffic will detour to mainlanes
- **Clear Right-of-Way**
- **Relocate Utilities**



I-35 Construction: McLennan County

Jacob Bell, PE

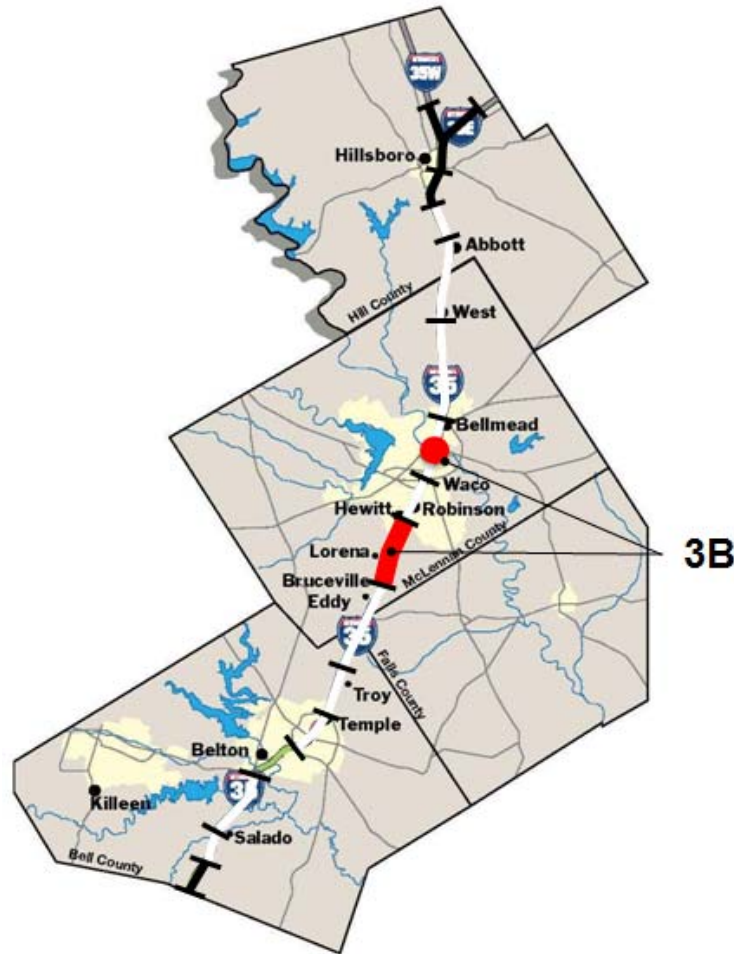
3B/BRB Project Manager

TxDOT





Project 3B: Hewitt – Lorena & BRB



Section Facts

Sun Valley Blvd. to Woodlawn Rd.

Brazos River Frontage Road Bridges

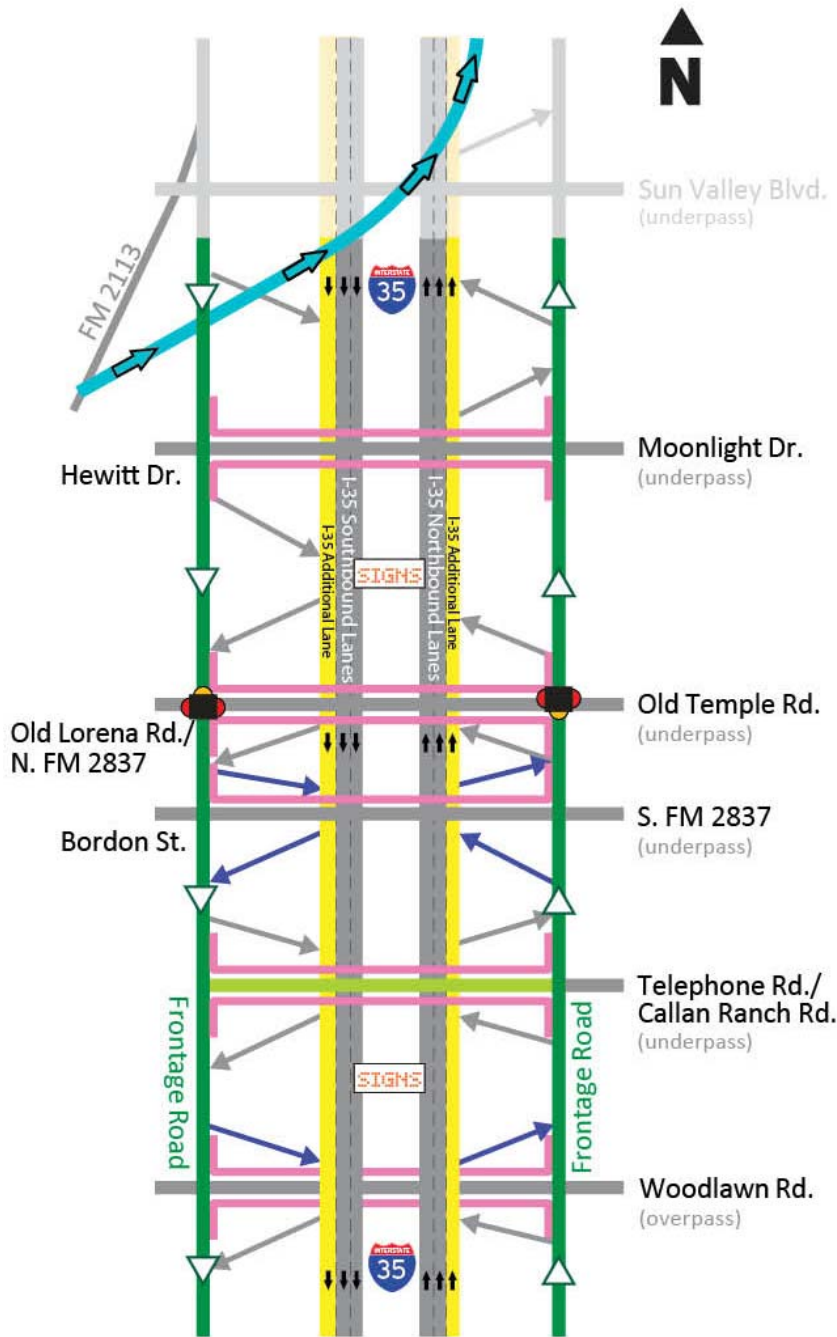
Construction Start: March 2012

Anticipated Completion: Late 2015 (H-L)
Fall 2014?? (BRB)

Length: 9.8 miles

Cost: \$212 million

Contractor: The Lane Construction Corp.



Hewitt to Lorena (3B)

SECTION ENHANCEMENTS

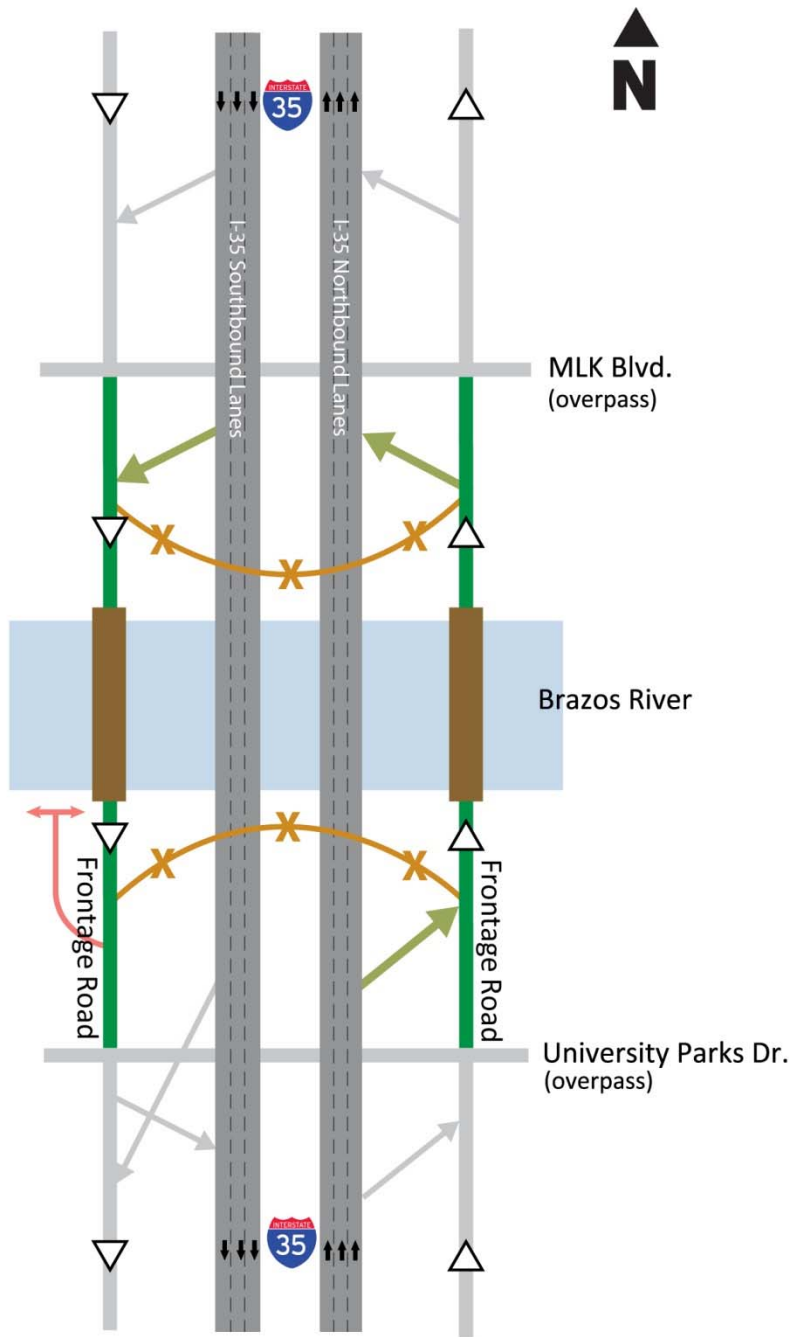
-  Expansion from 2 to 3 lanes in each direction
-  Converted to one-way frontage roads to improve safety
-  Upgraded on-/off-ramps
-  New on-/off-ramp
-  New direct connector ramp
-  New crossover
-  U-turns added
-  New flashing beacon
-  Four new electronic message signs



Brazos River Bridges (BRB)

SECTION ENHANCEMENTS

-  New continuous one-way frontage roads over river
-  New frontage road bridges over Brazos River
-  Reconfigured on and off ramps
-  Remove turnarounds
-  Pedestrian access to river





Project 3B: Next Six Months

- **Start construction on direct connect from FM 2113**
- **Open NB exit under FM 2063 and NB auxiliary lane near the cemetery**
- **Complete SBFR Bullhide and NBFR S. Cow Bayou bridges**
- **Complete N. FM 2837 and S. FM 2837 bridges (expect full freeway closures)**



Project 3B: Next Six Months

- **Start Hewitt Drive bridge**
- **Start reconstruction of frontage roads through Lorena**
- **Open NB frontage road from Moonlight to Sun Valley**
- **Open SB frontage road from Hewitt Drive to N. 2837**
- **Start Brazos River Bridges in July or August**



Brazos River Bridges

- Camera to be installed to record the construction progress of the bridges and the new Baylor Stadium

Brazos River Bridges

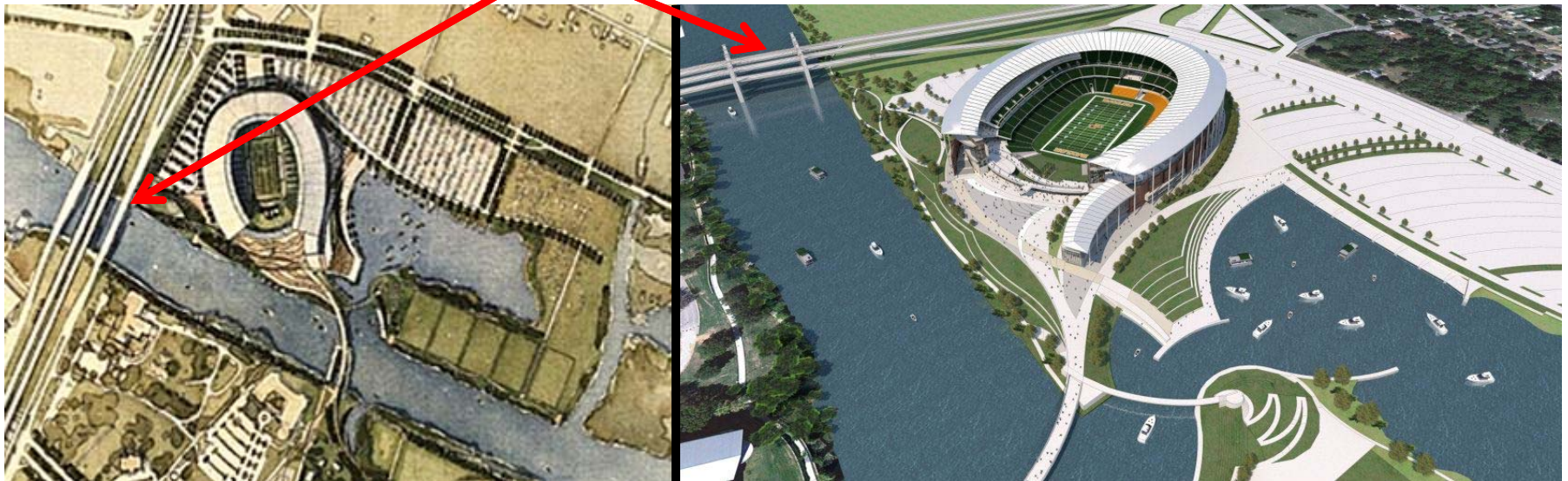


Image from Baylor Lariat's web site

Image from Baylor Athletics' Facebook page



I-35 Construction: McLennan County

Victor Goebel, PE

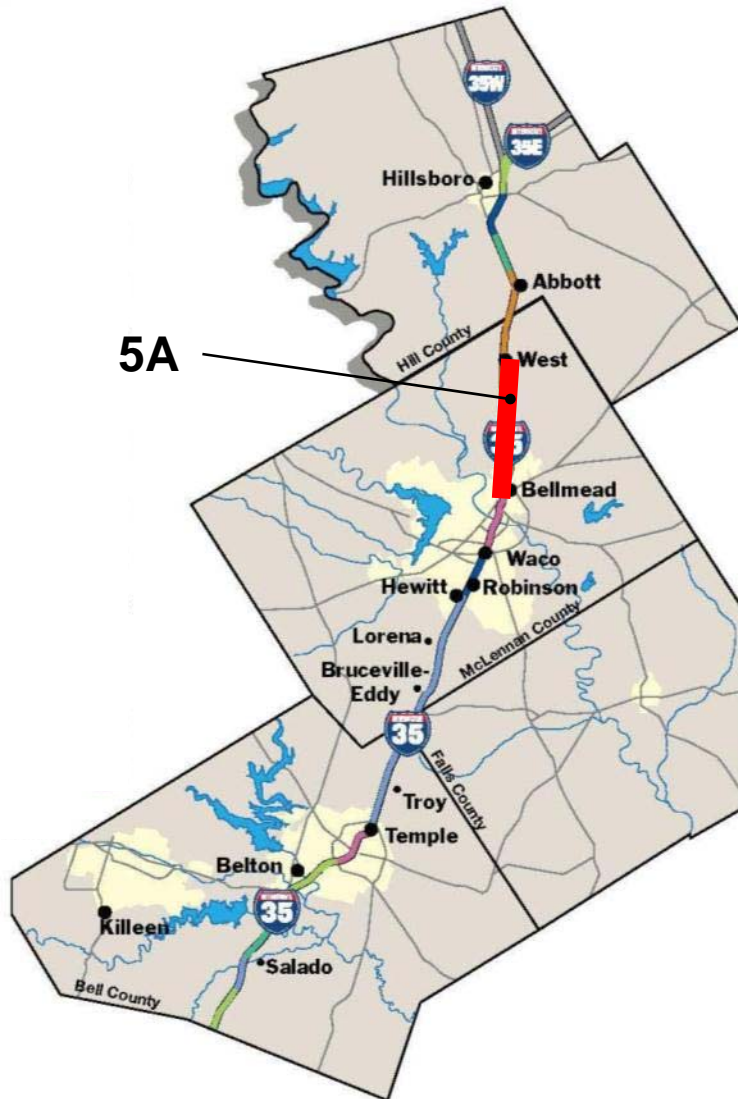
5A Project Manager

TxDOT





Project 5A: North Waco to West



Section Facts

N. Loop 340 to FM 1858/Tokio Road

Construction Start: October 2010

Anticipated Completion: Early 2015

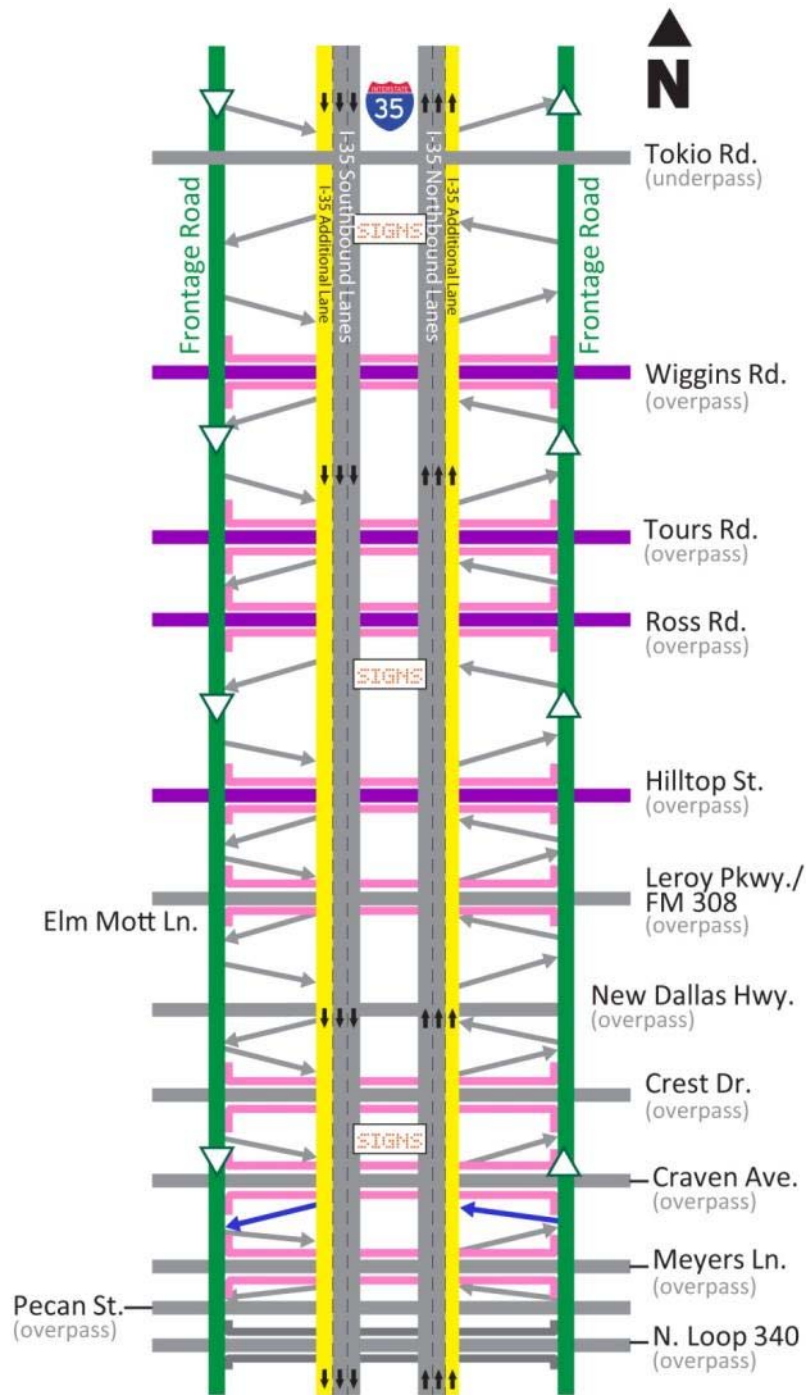
Length: 13.4 miles

Cost: \$166.8 million








Contractor: Williams Bros. Construction



North Waco to West



SECTION ENHANCEMENTS

-  Expansion from 2 to 3 lanes in each direction
-  Converted to one-way frontage roads to improve safety
-  Upgraded on-/off-ramps
-  New on/off-ramps
-  U-turns added
-  Six new electronic message signs
-  TxDOT is converting these from underpasses to overpasses

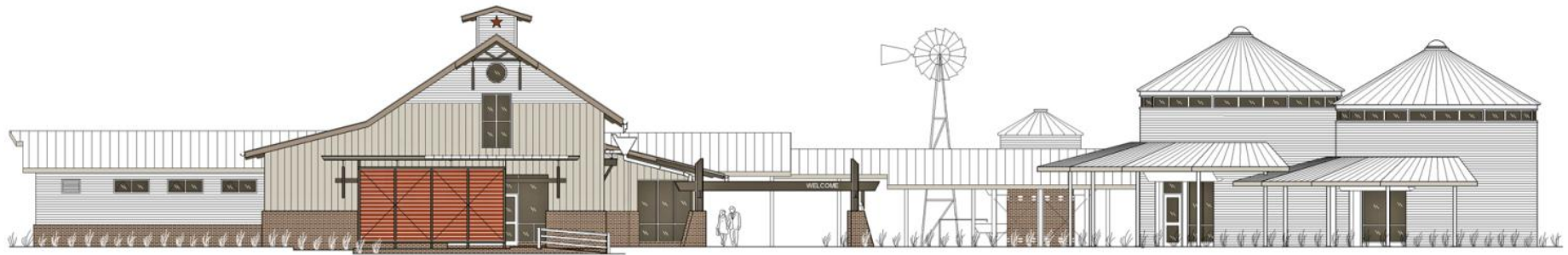


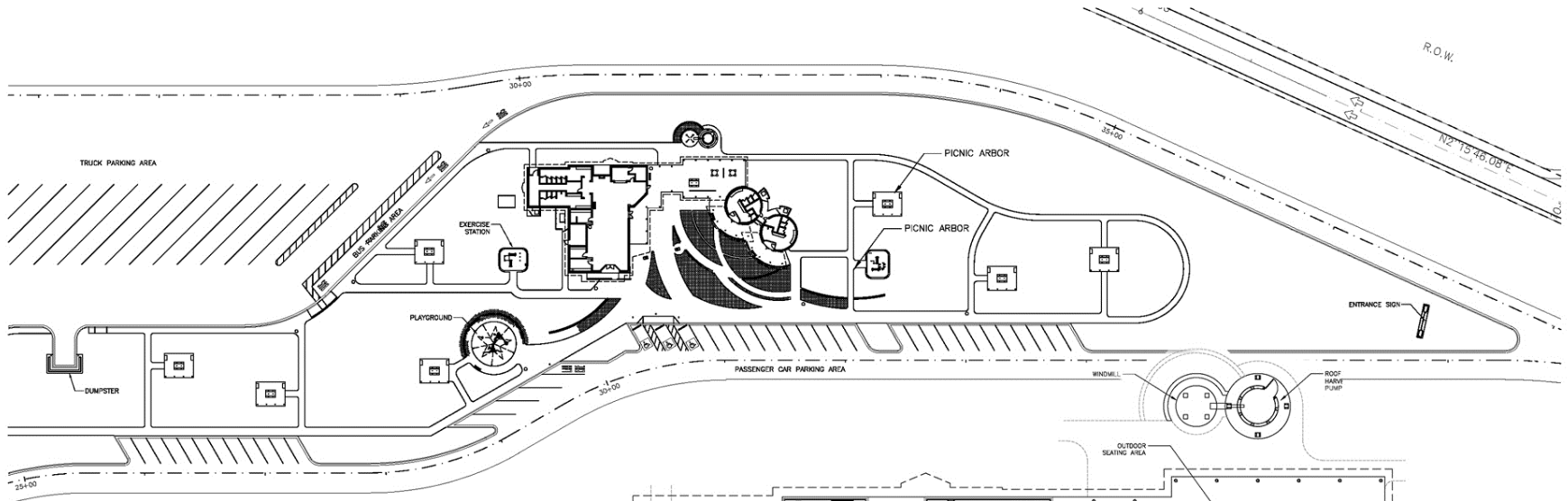
Project 5A: Next 6 Months

- **Completion from Loop 340 to Business 77 (including intersections)**
- **Completion of Business 77 by Connally High School**
- **Hilltop Road bridge will be closed for demolition**
- **Completion of new FM 1858/Tokio Road bridge (and demolition of old bridge)**
- **Continuing NB frontage road construction between Ross Rd and FM 1858/Tokio Road**



Hill County Safety Rest Areas

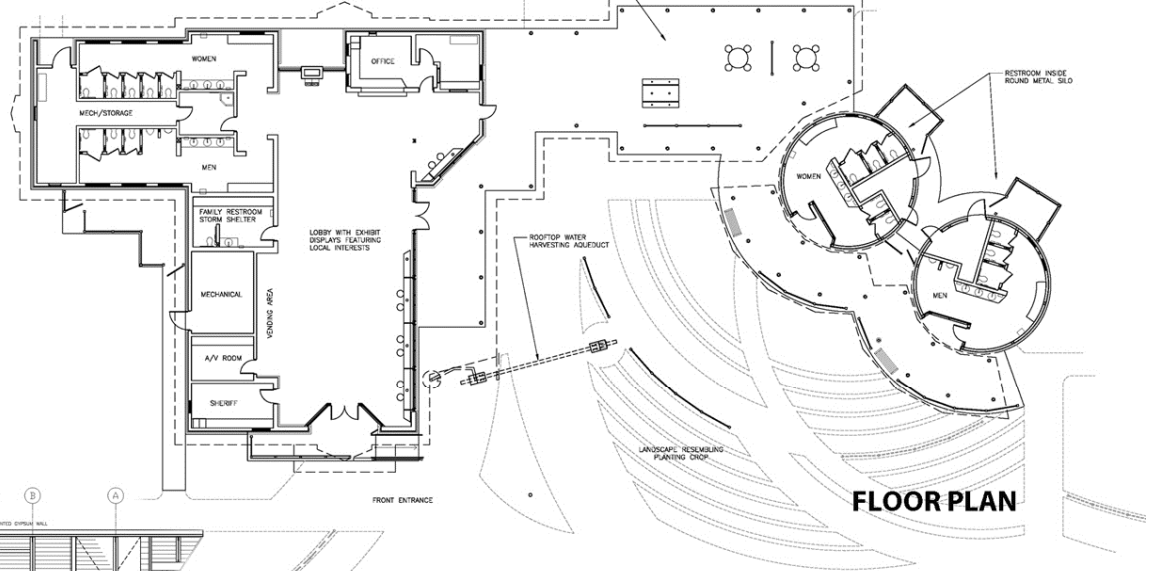




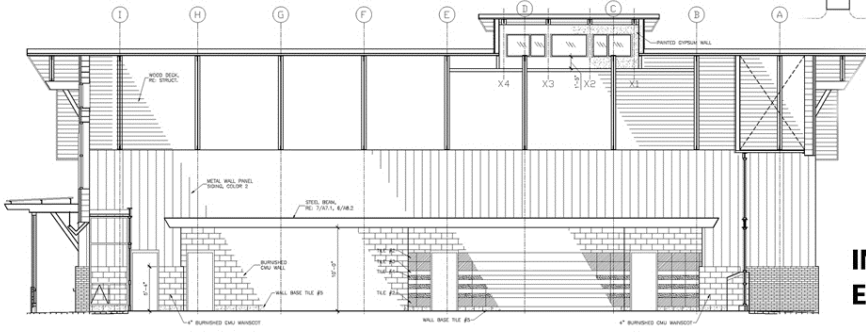
SITE PLAN

HILL COUNTY

SAFETY REST AREAS



FLOOR PLAN



INTERIOR ELEVATION





Hill County Safety Rest Areas





Open Discussion by Schematics