

CUE Travel

Design Documentation

Cesar Bojay
Uthman Mohammed
Evisa Lumani

+ Table of Contents

Hierarchy Chart 3

Entity Relationship Diagram 4

Data Definition 5

Homepage 6

 Purpose 6

 Design 6

 Data Collected 6

Photos 9

 Purpose 9

 Design 9

 Data Collected 9

About 7

 Purpose 7

 Design 7

 Data Collected 7

Account 10

 Purpose 10

 Design 10

 Data Collected 10

Packages 8

 Purpose 8

 Design 8

 Data Collected 8

Contact Us 11

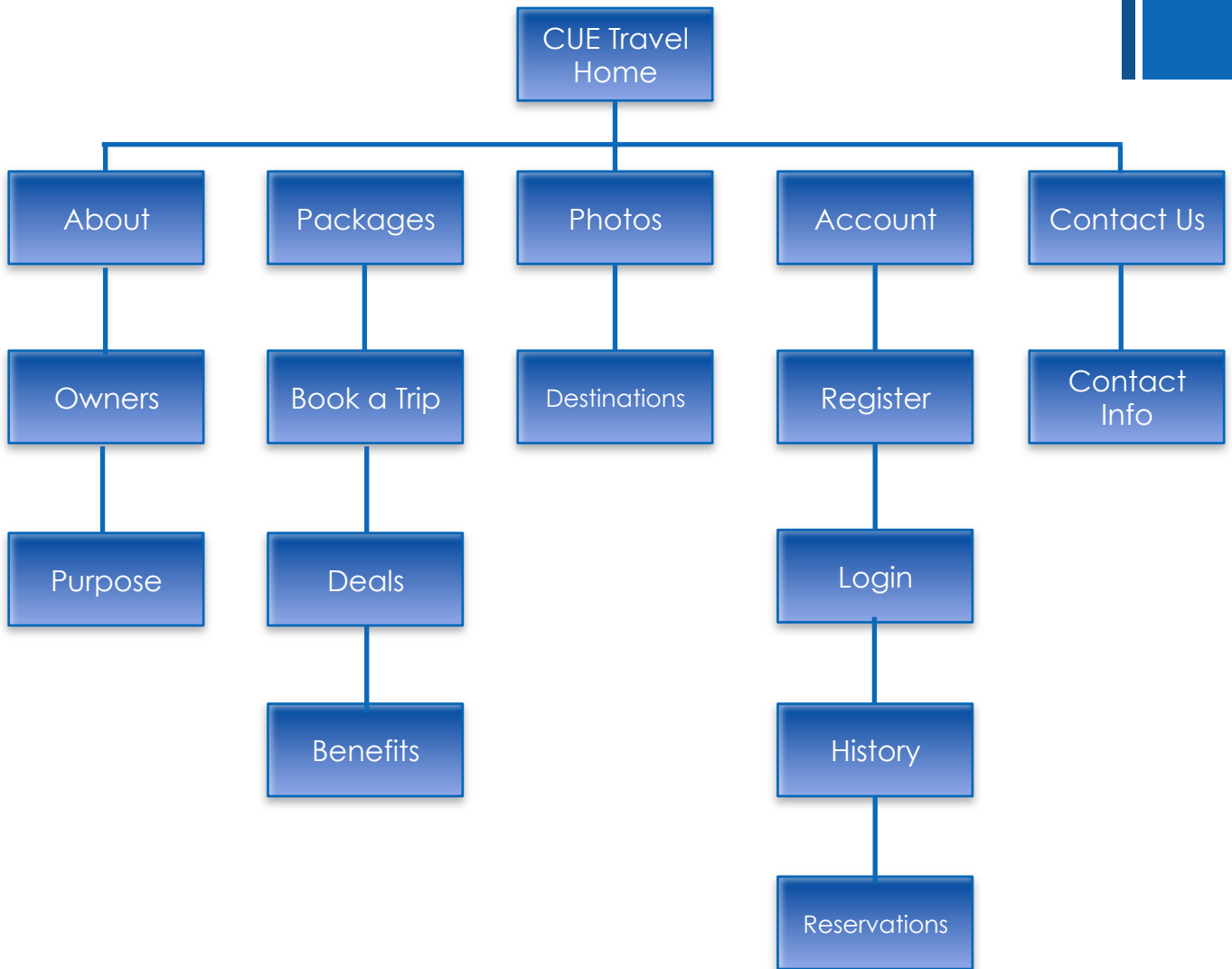
 Purpose 11

 Design 11

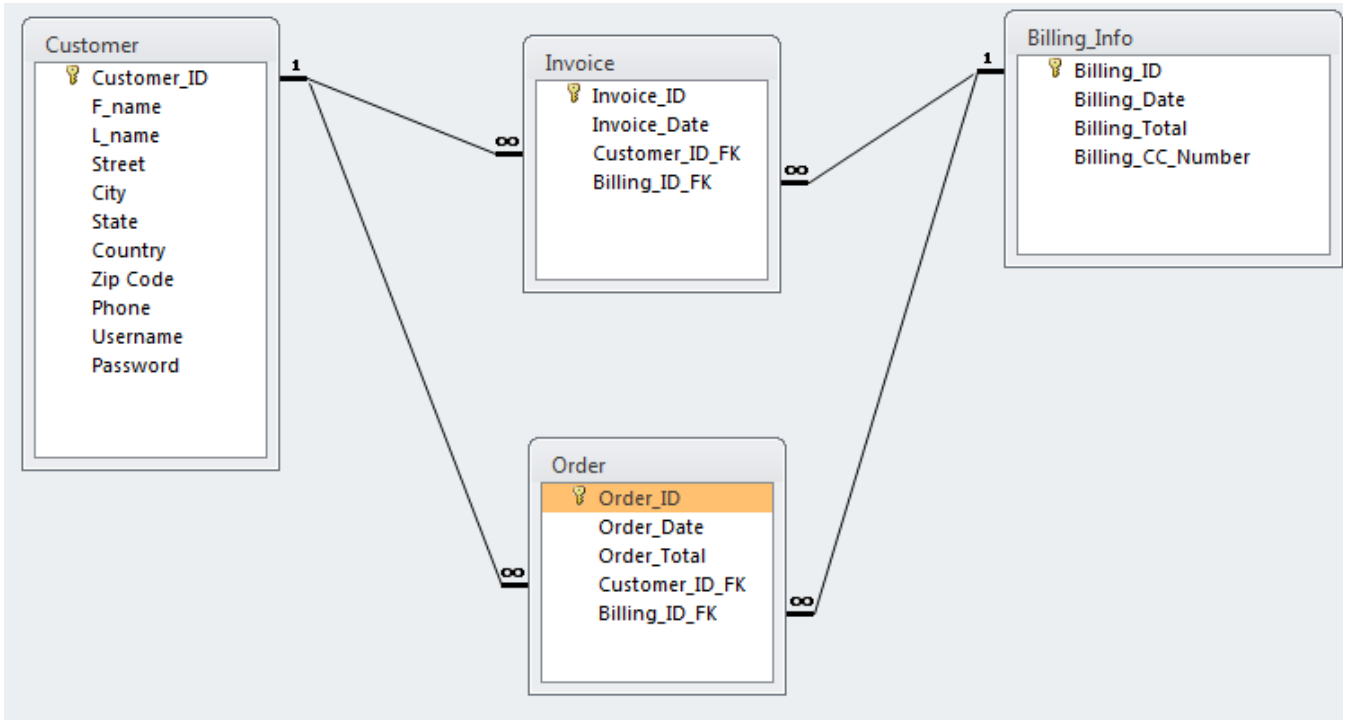
 Data Collected 11



Hierarchy Chart



+ Entity Relationship Diagram





Data Definition

Customer (**Customer ID**, *F_Name, L_Name, Street, City, State, Country, Zip Code, Phone, Username, Password*)

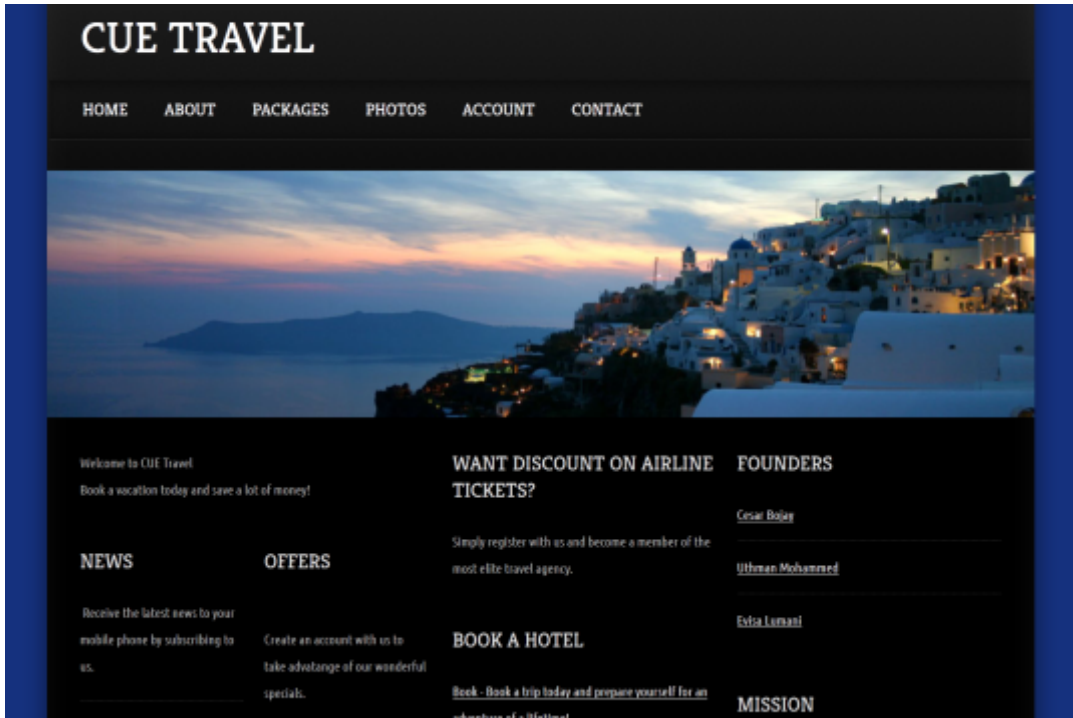
Billing (**Billing ID**, *Billing_Date, Billing_Total, Billing_CC_Number*)

Order (**Order ID**, *Order_Date, Order_Total, Customer_ID_FK, Billing_ID_FK*)

Invoice (**Invoice ID**, *Invoice_Date, Customer_ID_FK, Billing_ID_FK*)



Homepage



Purpose

The purpose of the Homepage is to make the first introduction about what CUE Travel operations in an easy-to-navigate way, through the top menu and the information on the content pane and to encourage visitors to sign-up, with the possibility of becoming future customers, through the display of attractive touristic images and of catchy phrases about our deals and offers.

Design

The home page includes a menu on the top of the page with links to "Home", "About", "Packages", "Photos", "Account" and "Contact". On the content central part of the page, various information, pictures and links will be displayed in an attractive and user-friendly design, such as: information related to the business itself (founders, business mission) and to the business operations (links inviting the user to book a hotel, search for discount tickets, offers, news etc.). At the bottom of the page.

Data Collected

No data collected.





About



Purpose

The purpose of the About us page is provide information about CUE Travel, its owners and it mission, so as to establish a professional and reliable image to the visitors.

Design

The top of the page will follow the same design as the homepage with the top navigation menu. The central content part, though, will contain all the company's details available to the public, including an About us section, a Mission section to the left (the information being initially introduced on the homepage, but being further elaborated on this specific page) and links to the "Owners" and "Purpose" pages (as indicated on the hierarchy chart) on the left part, and also including the company logo on the right.

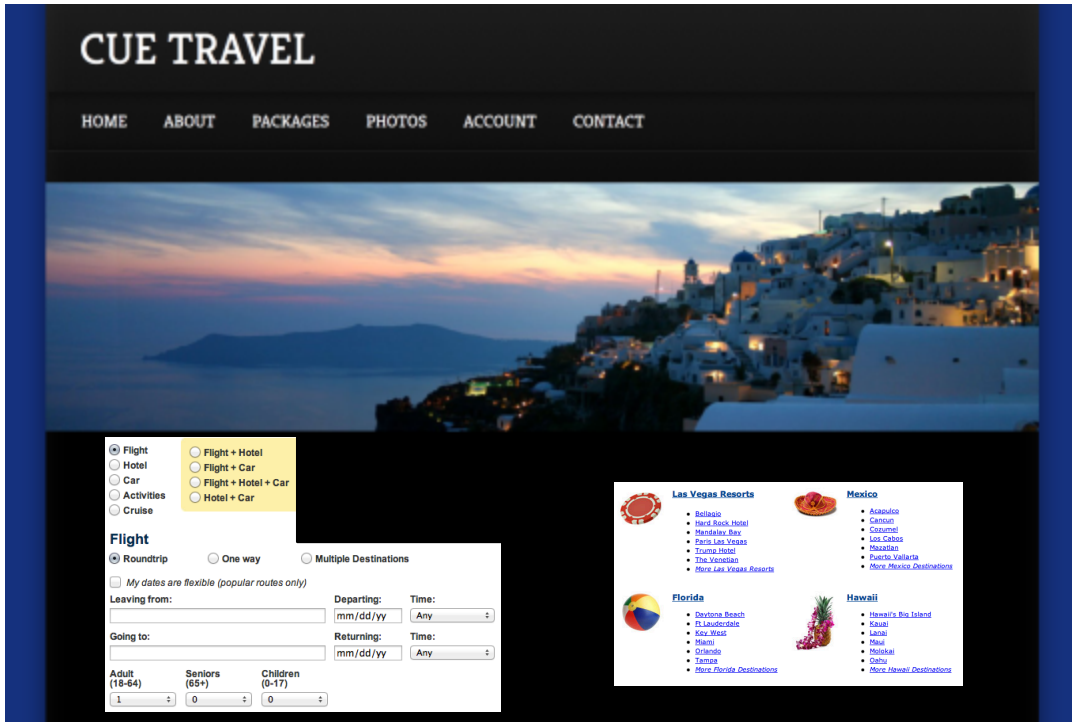
Data Collected

No data collected.





Packages



Purpose

The purpose of the page is to interact with the users who want to make use of our services. It is designed to collect user data, which will be used to query our database, and then display the various applicable offers and the related information.

Design

The top of the page will follow the same design as the homepage with the top navigation menu. The central content part, though, will contain various controls to interact with the user. For instance, it will contain a list of radio-buttons about the various services we offer, e.g. Flight, Hotel, Car, Cruise, Flight + Hotel, Flight + Car etc. For each of these options selected, the appropriate controls will appear, text boxes, check boxes, radio buttons, drop-down lists etc. to get the required user input, and also a Search button. While the left part of the page will contain the search controls, the right part of the page will display the search results.

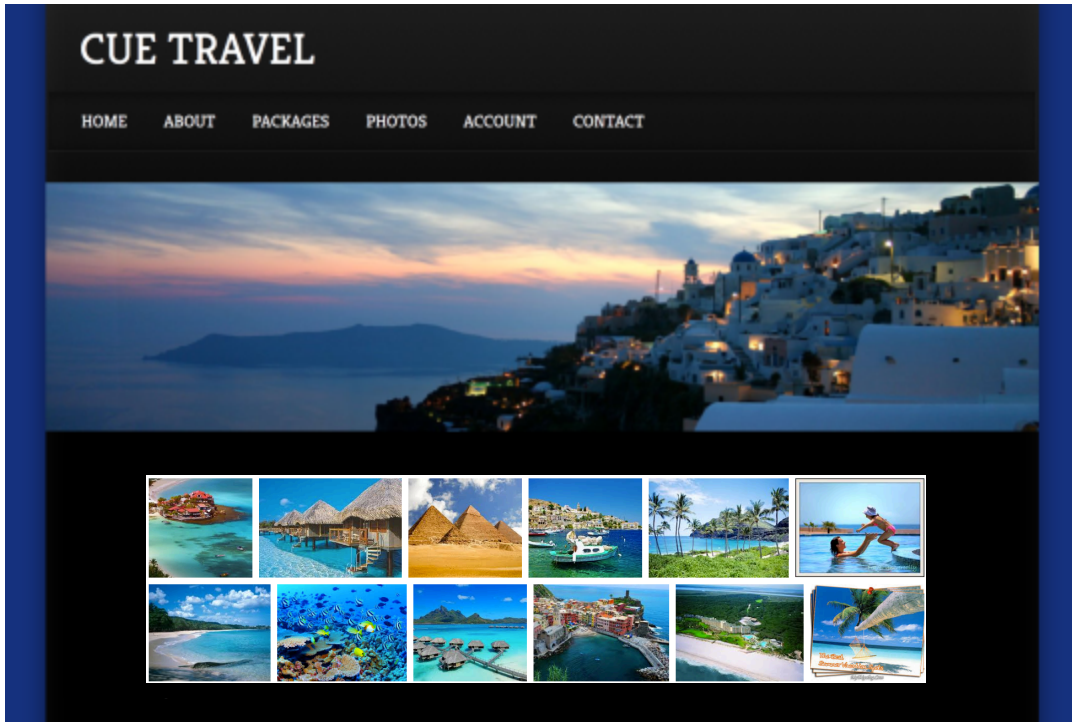
Data Collected

The first datum to be collected is user's preferable service, which the following data will depend on. For instance, if "Flight" was chosen, the data collected would be: type of flight (round trip/one way/multiple destinations), Boolean type if user is flexible with dates, departing and returning airport, date, time, number of adults/seniors/children etc. If "Hotel" was chosen, the data collected would be: check-in and check-out date, type of room (single / double / children/groups room), location etc. If "Car" was chosen, the data collected would be pick-up location; pick-up date and time; return date and time; vehicle class (e.g. economy, full size, minivan, SUV etc.) etc.





Photos



Purpose

The purpose of the page is to increase the visitors' awareness of the historical, cultural and touristic values of the top destinations our company offers, and to further invite visitors to experience such places via our services.

Design

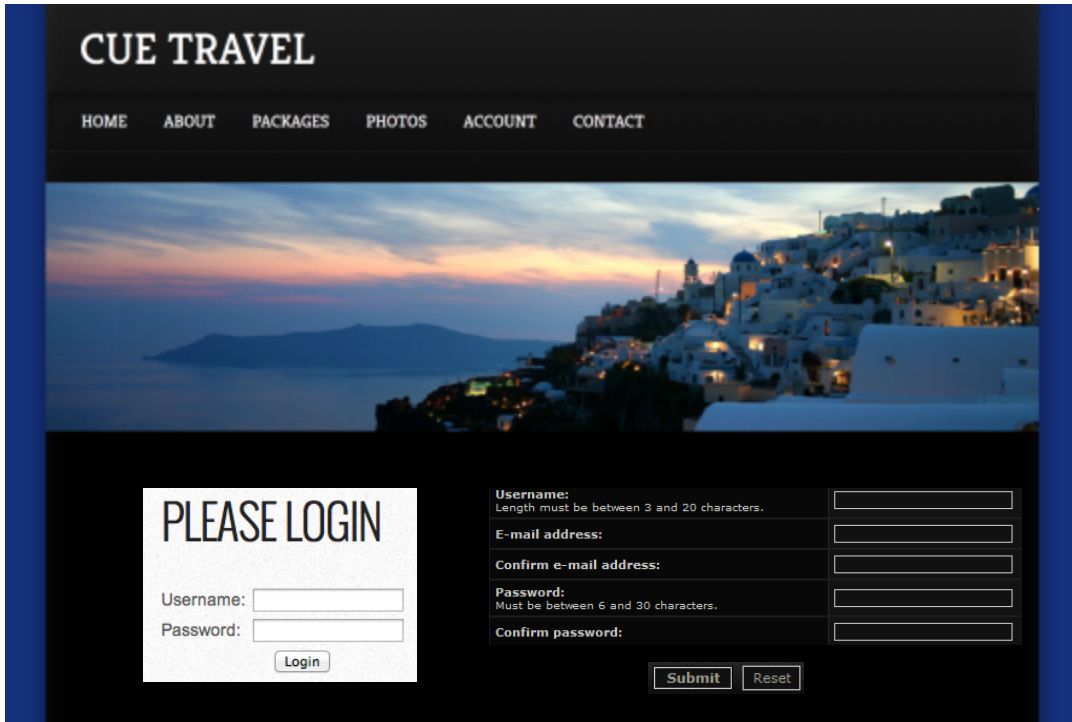
The top of the page will follow the same design as the homepage with the top navigation menu. The central content part, though, will contain a group of pleasant photos, each assigned a link to a specific page displaying further information about the destination.

Data Collected

No data collected.



Account



Purpose

The purpose of the page is to log in users to our website, if registered, or otherwise to get their required data and generate a new account.

Design

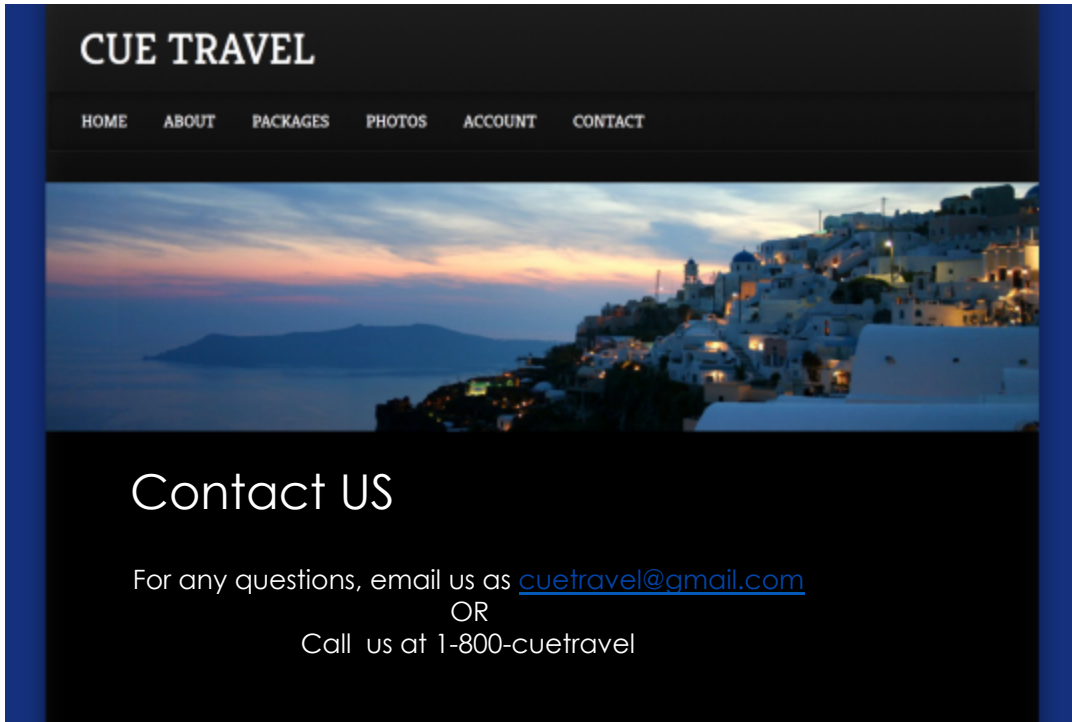
The top of the page will follow the same design as the homepage with the top navigation menu. In the central part on the left, text boxes for username and password and a 'Log in' and 'Sign-up' button appear. The visitor types the username and password and clicks on 'Log in' if registered; otherwise, he/she clicks on 'Sign-up', at which point a registration form, with its related controls appears to the right, with text boxes for username, e-mail and confirm e-mail address, password and confirm password, as well as 'Submit' and 'Reset' button.

Data Collected

If the user is to log in, his/her username and password are collected. If the website visitor is to be registered, his/her username, e-mail address, confirmed e-mail address, password and confirmed password are collected.



Contact Us



Purpose

The purpose of the page is to provide users with contact information about CUE Travel, including address, phone number and e-mail, in order to address all users' questions and concerns.

Design

The top of the page will follow the same design as the homepage with the top navigation menu. In the central content part, the contact information will be displayed, alongside company's logo and/or pictures.

Data Collected

No data collected.

