

# Foreclosures in Maine and New England

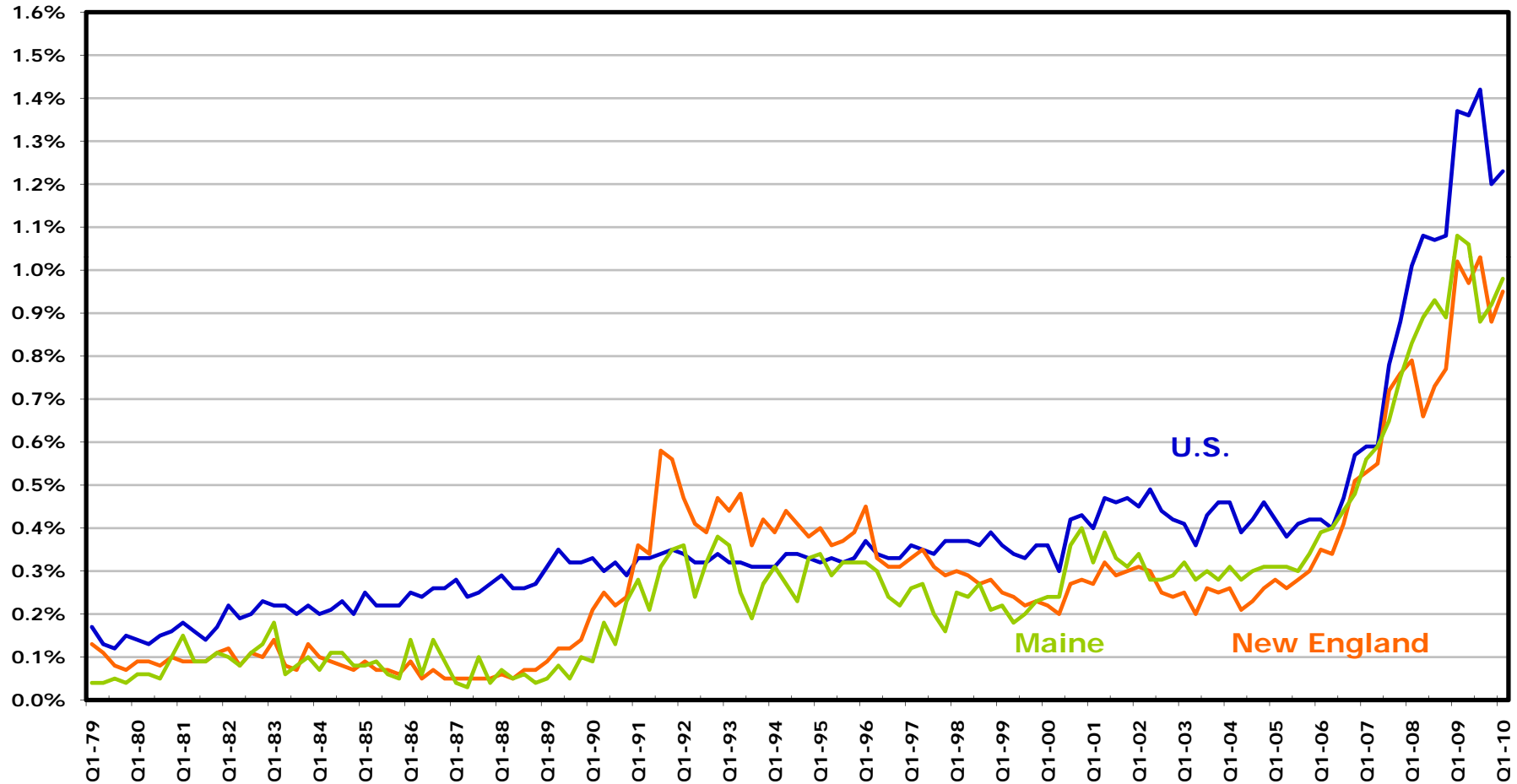
Analysis of Mortgage Bankers Association  
National Delinquency Survey  
Data through Q1-10

Version: July 7, 2010



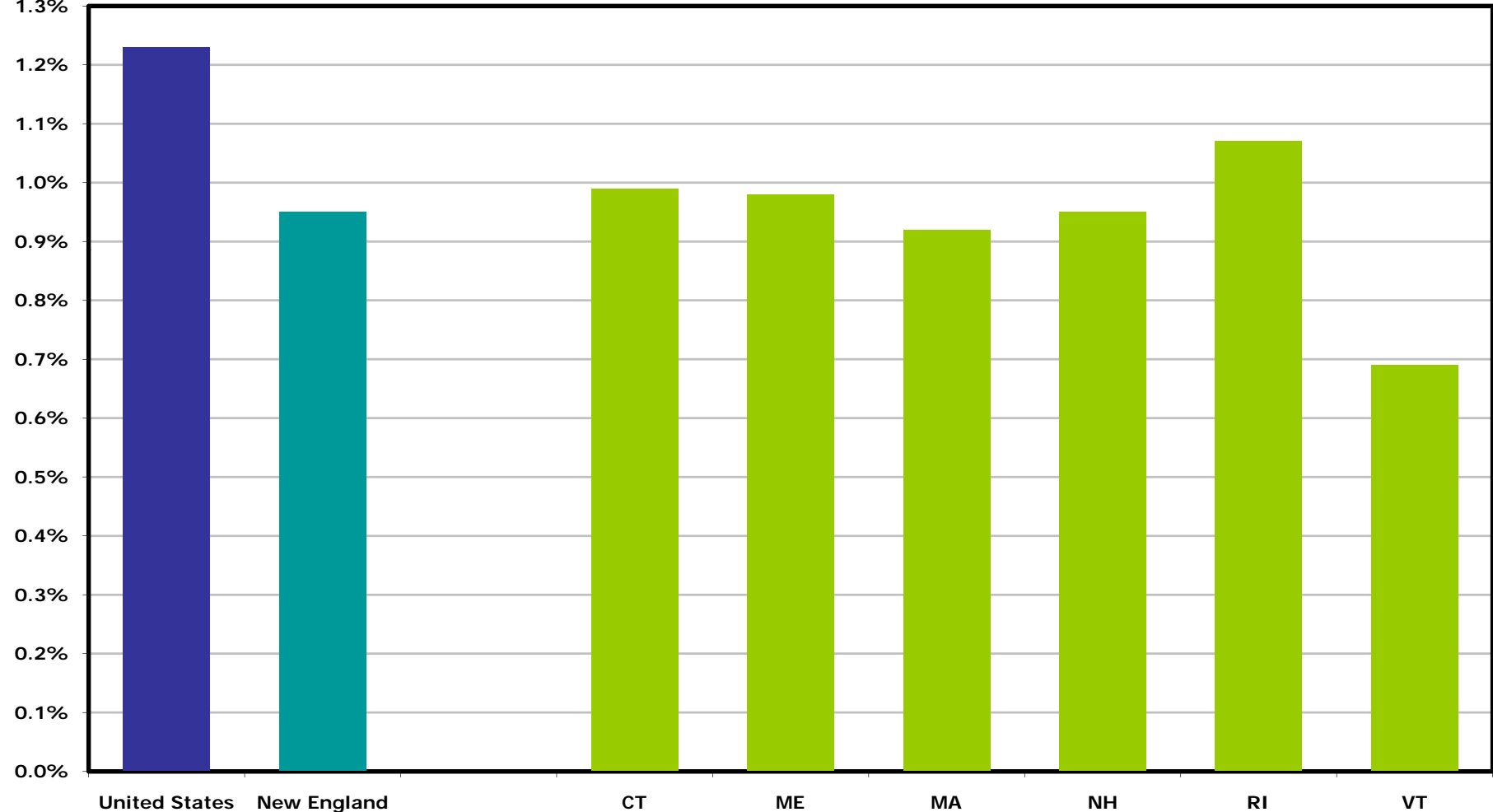
# Foreclosure rates for United States, New England, and Maine, through Q1-10

Percent of loans with foreclosure initiation in quarter



# Foreclosure rates for United States and New England states, Q1-10

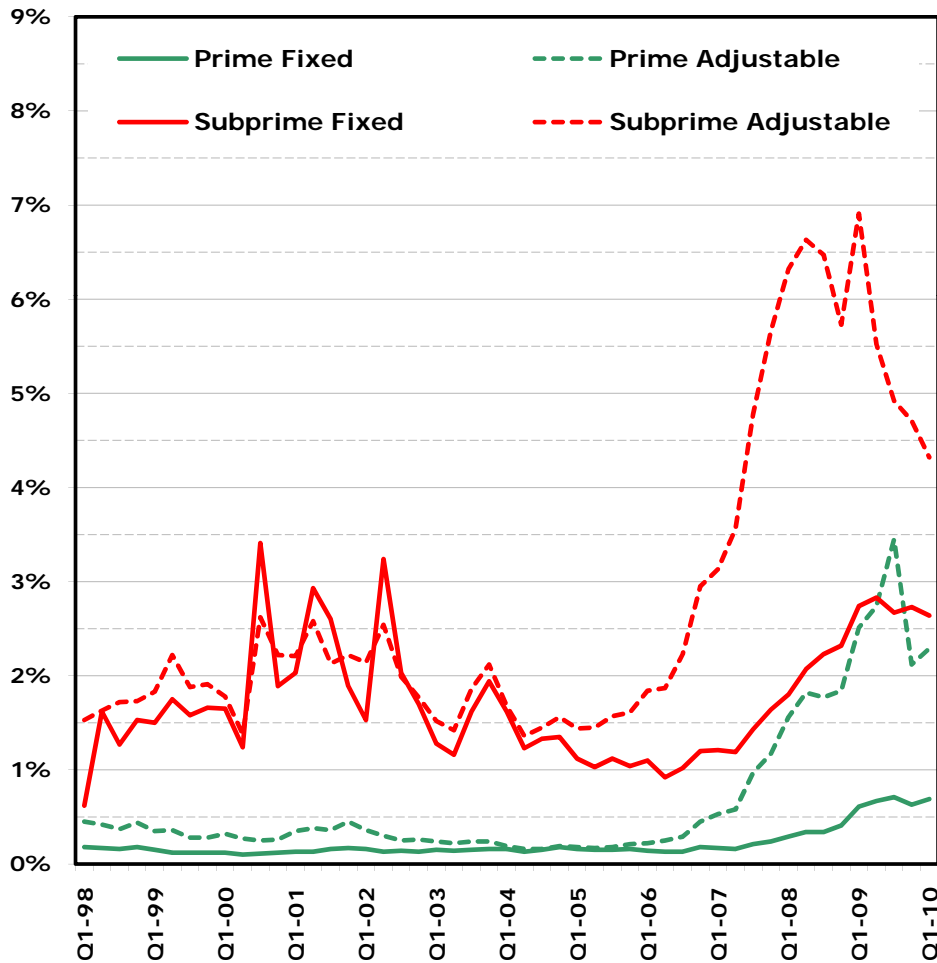
Percent of loans with foreclosure initiation in quarter



# Foreclosure rates for United States and Maine, major conventional loan categories, through Q1-10

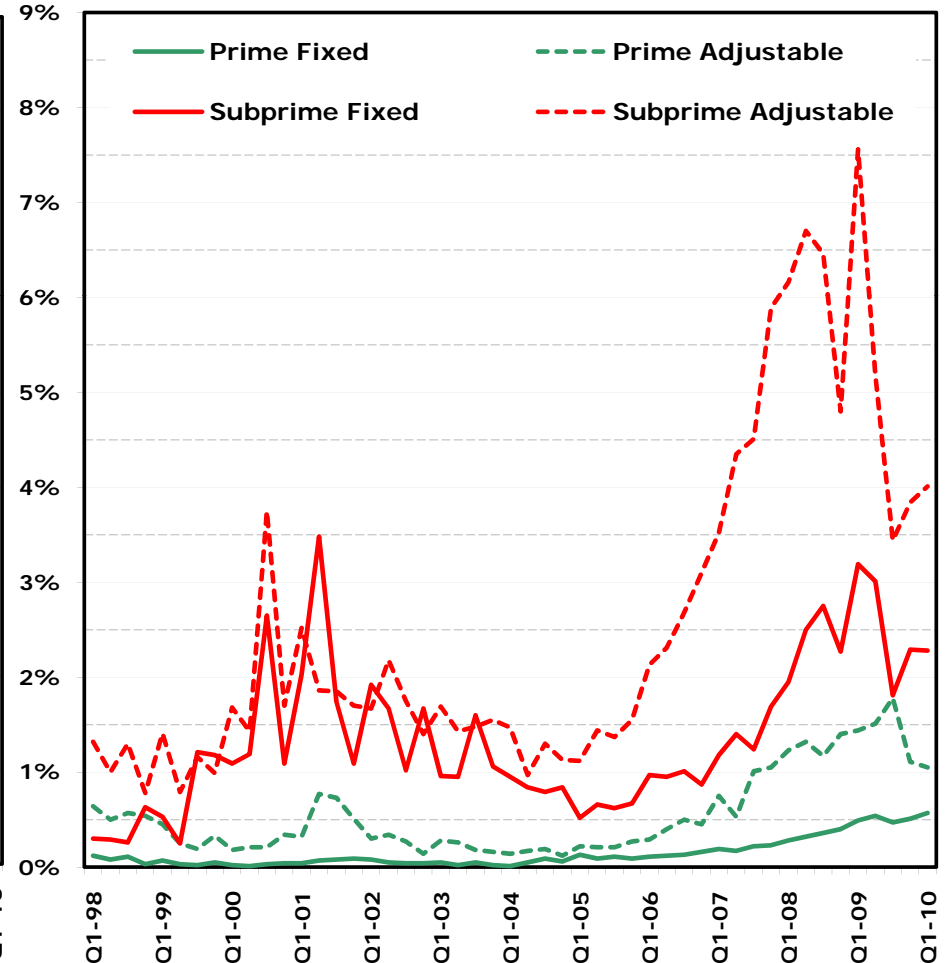
## United States

Percent of loans with foreclosure initiation in quarter



## Maine

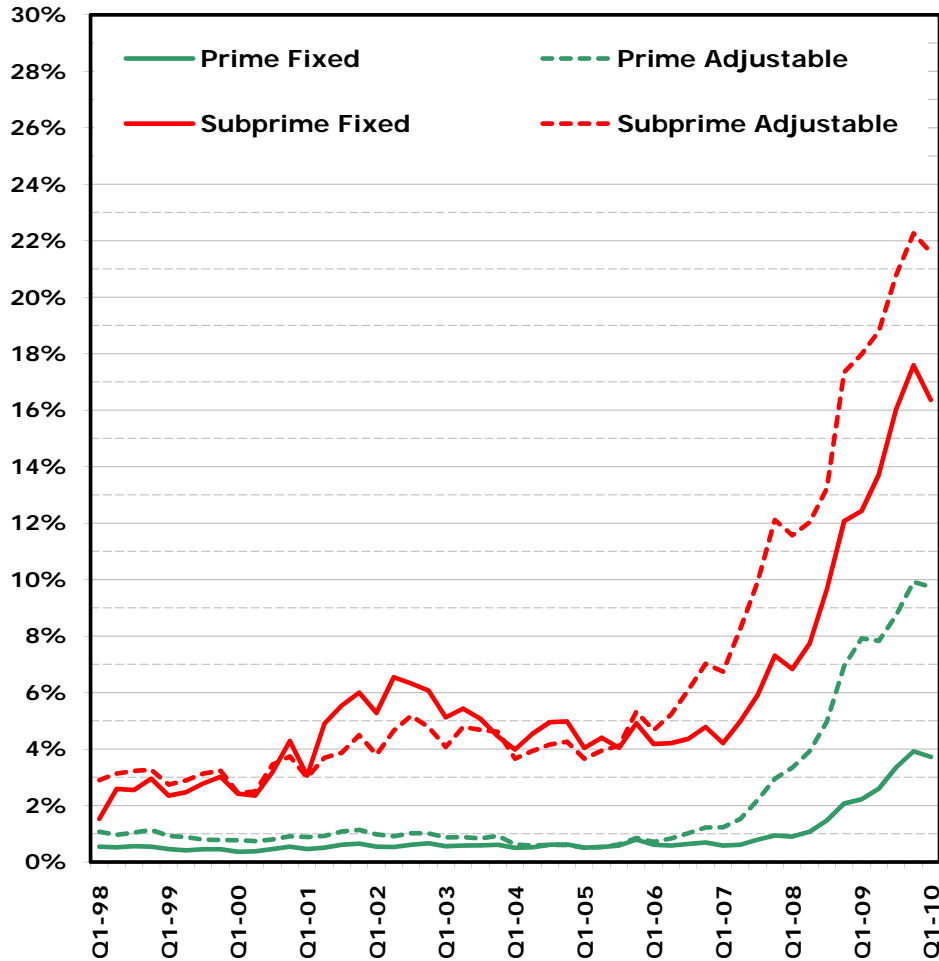
Percent of loans with foreclosure initiation in quarter



# 60-day+ delinquency rates for United States and Maine, major conventional loan categories, through Q1-10

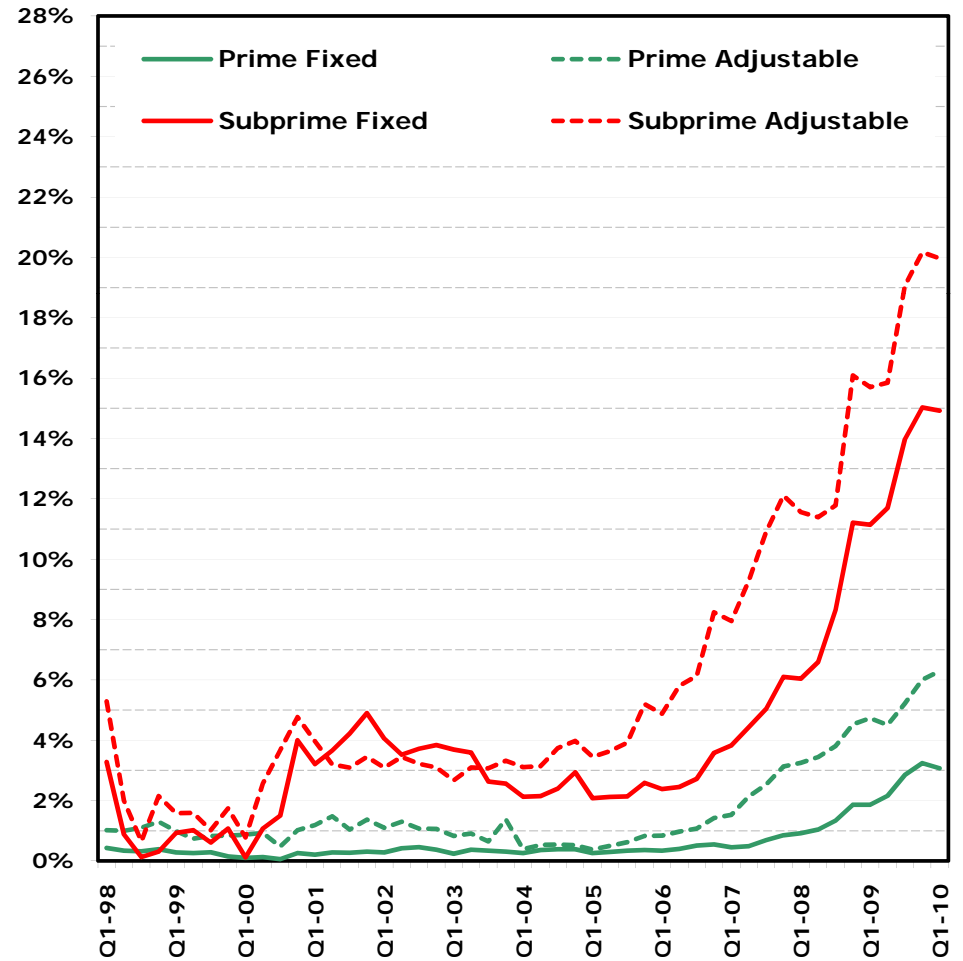
## United States

Percent of loans with 60-day+ delinquency in quarter



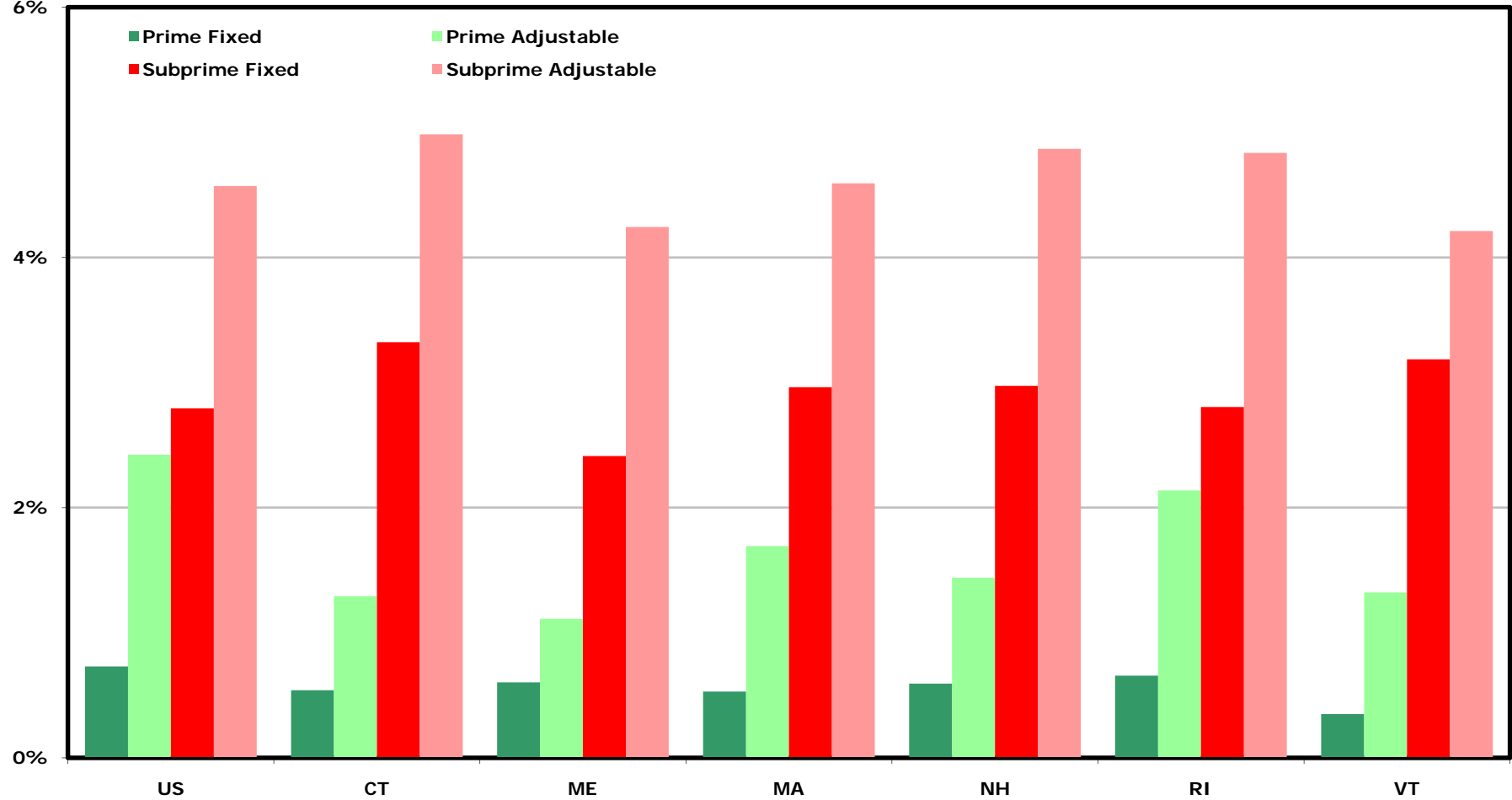
## Maine

Percent of loans with 60-day+ delinquency in quarter



# Foreclosure rates for U.S. and New England states, major conventional loan categories, Q1-10

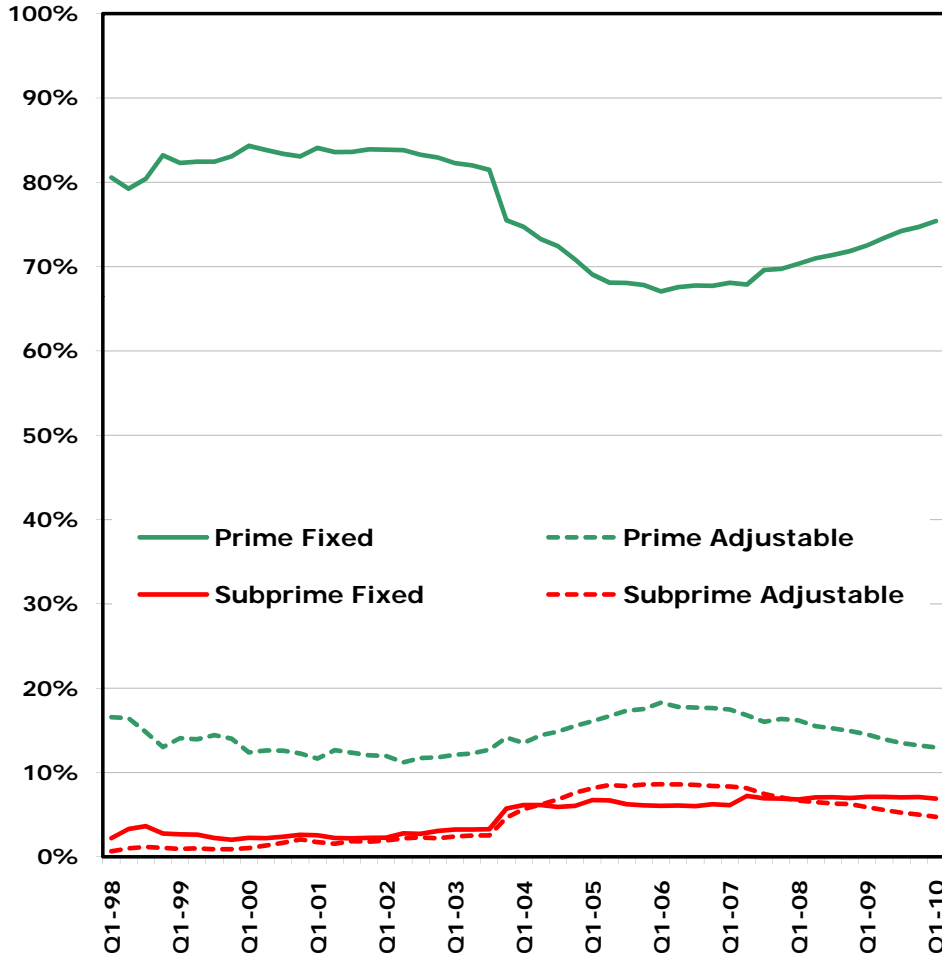
Percent of loans with foreclosure initiation in quarter



# Market share for United States and Maine, major conventional loan categories, through Q1-10

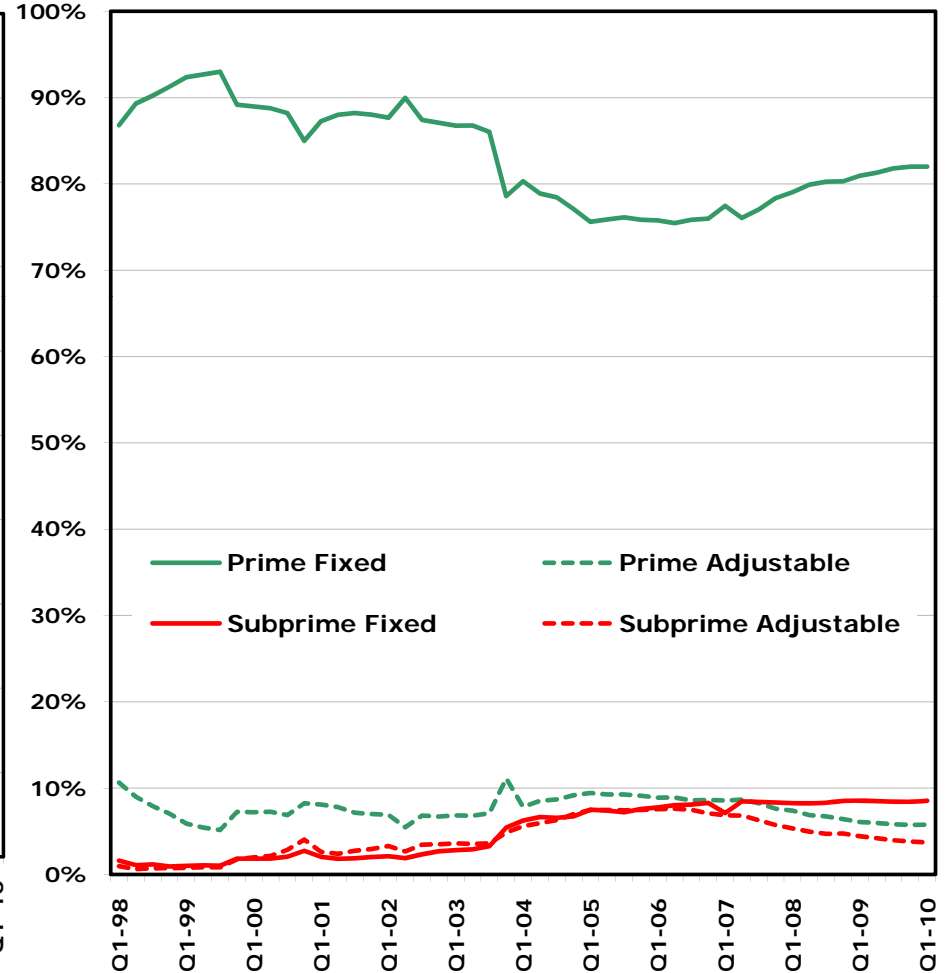
## United States

Market share (quarterly values sum to 100%)



## Maine

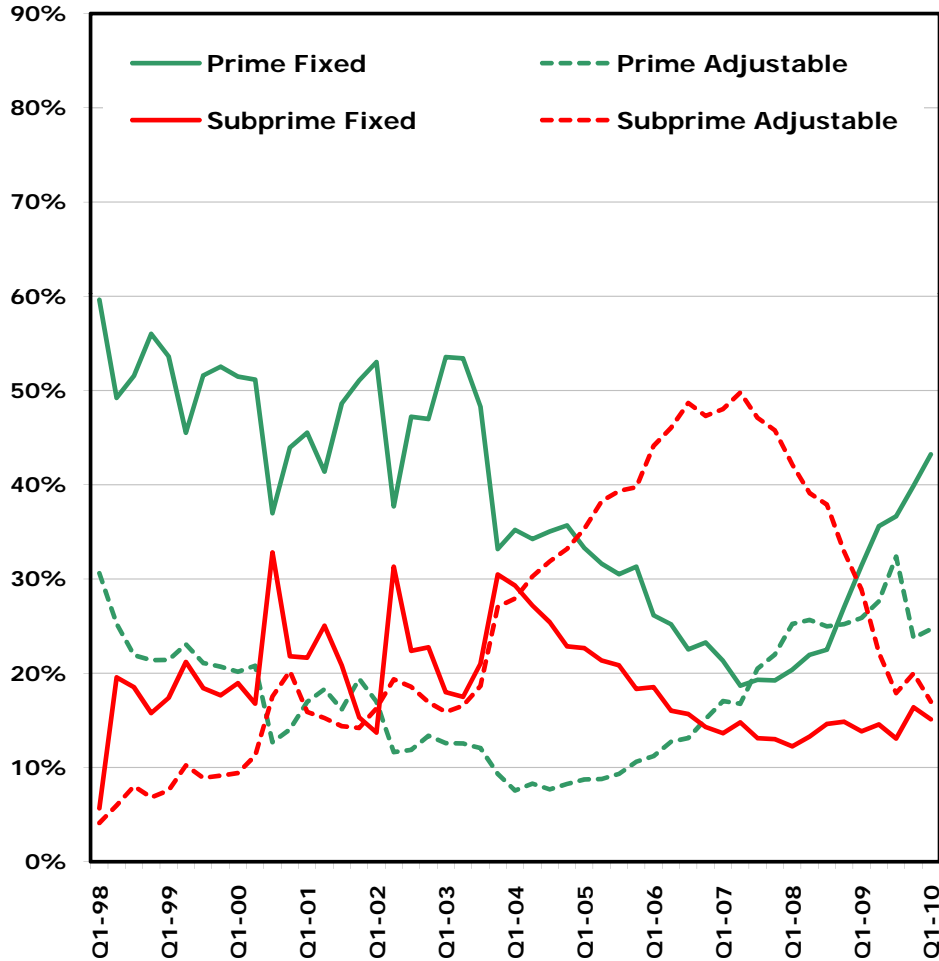
Market share (quarterly values sum to 100%)



# Product foreclosure share for United States and Maine, major conventional loan categories, through Q1-10

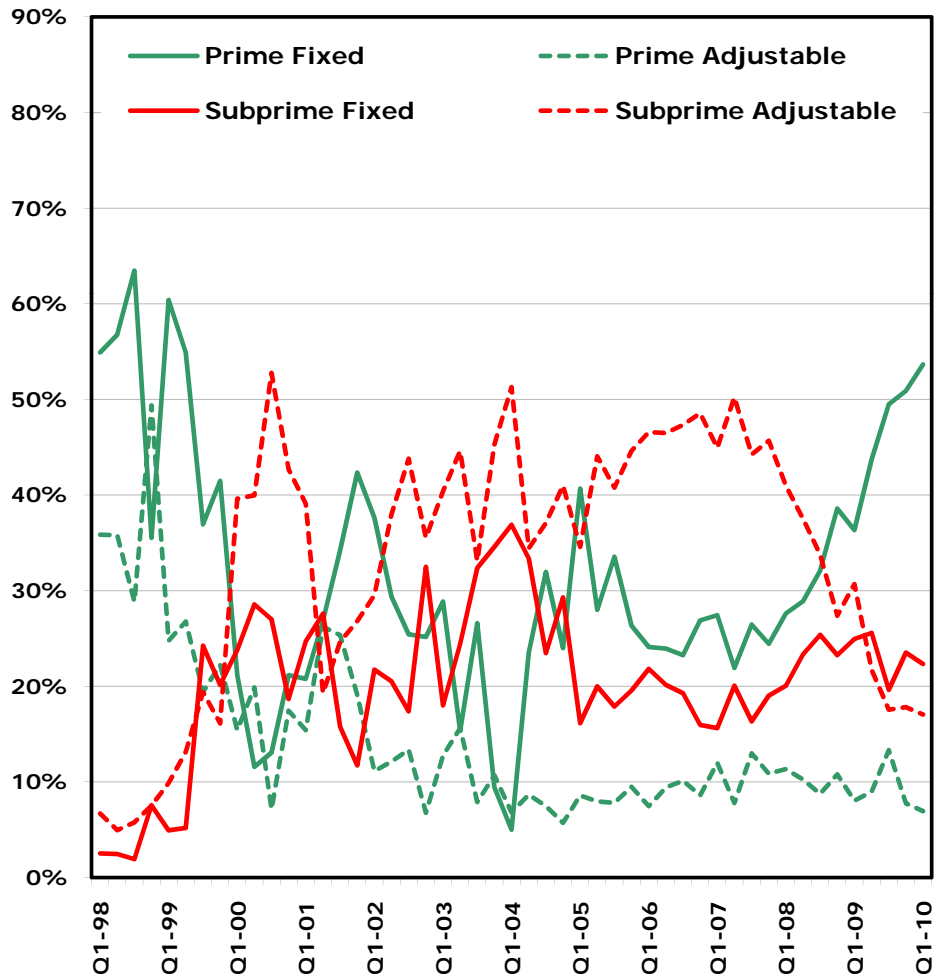
## United States

Foreclosure share (quarterly values sum to 100%)



## Maine

Foreclosure share (quarterly values sum to 100%)

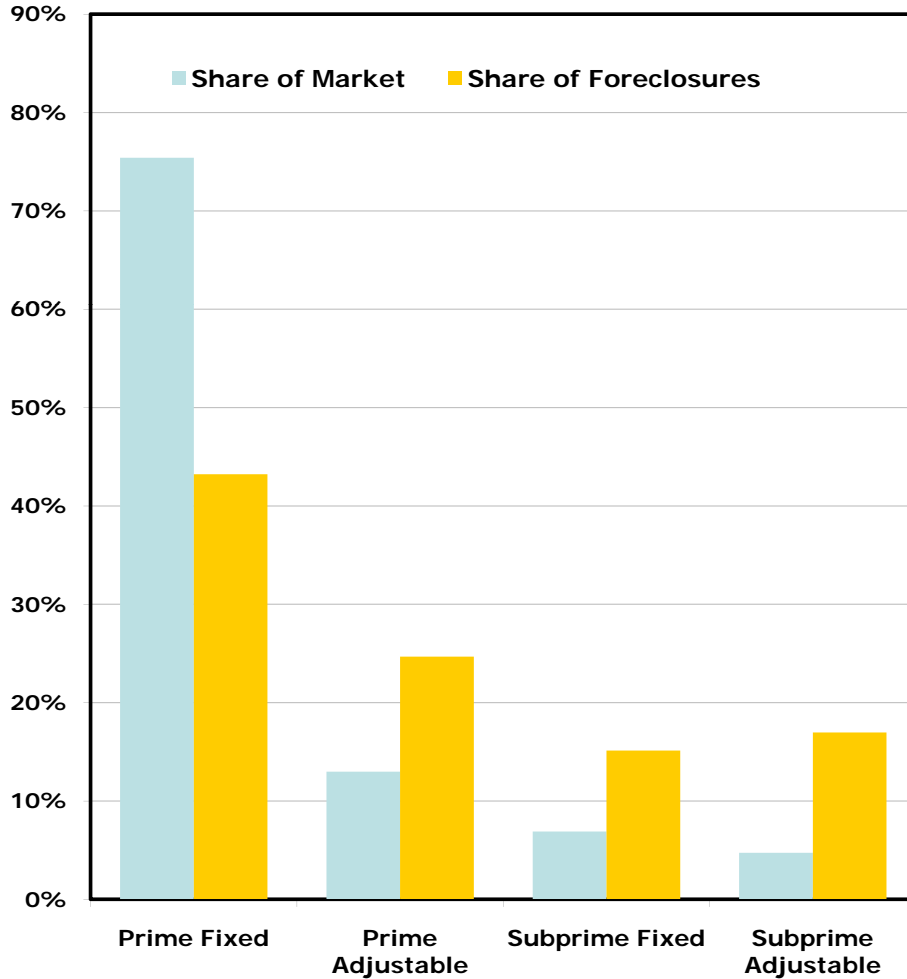




# Market and foreclosure share for United States and Maine, major conventional loan categories, Q1-10

## United States

Market and foreclosure share



## Maine

Market and foreclosure share

