

Foreclosures in Massachusetts and New England

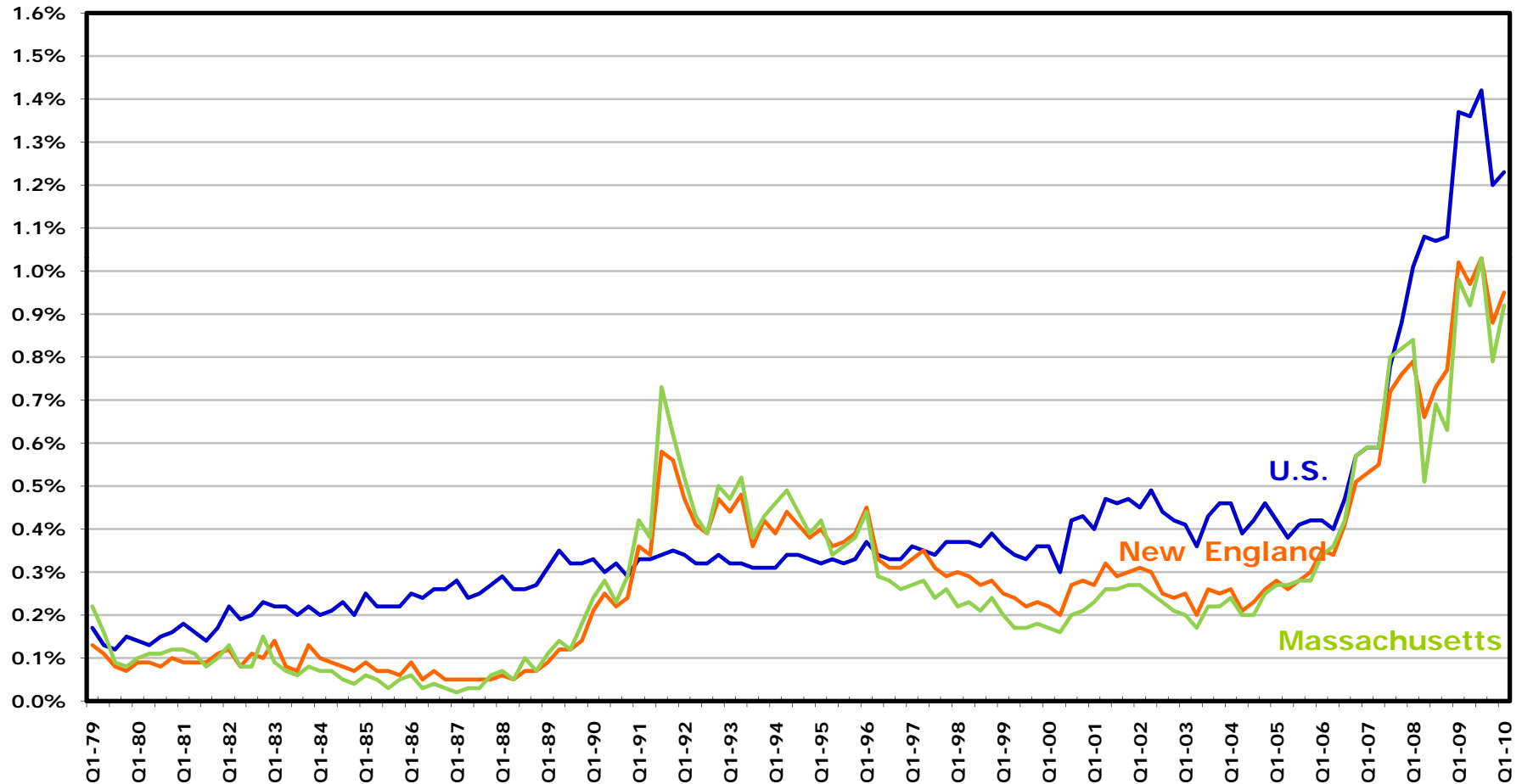
Analysis of Mortgage Bankers Association
National Delinquency Survey
Data through Q1-10

Version: July 7, 2010



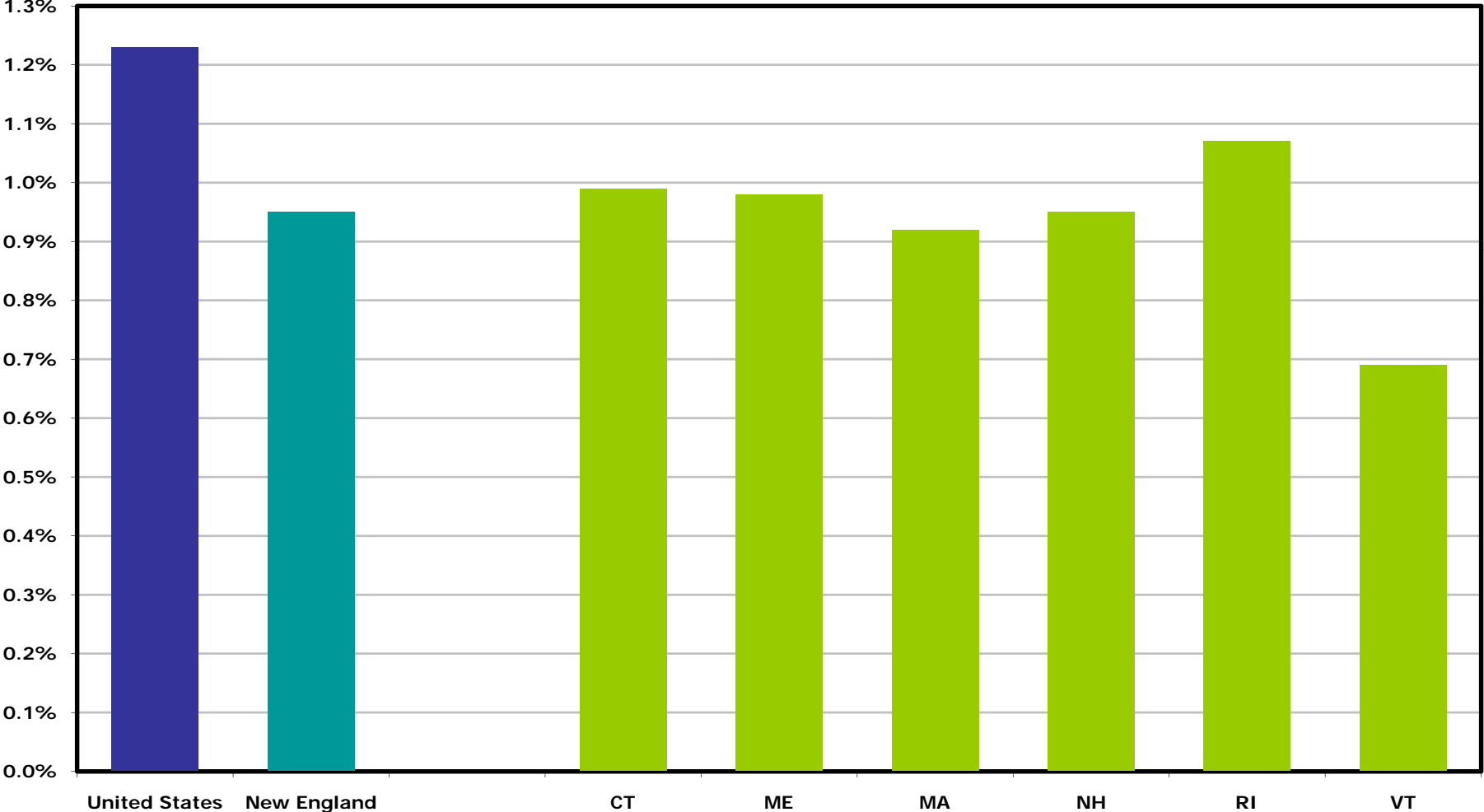
Foreclosure rates for United States, New England, and Massachusetts, through Q1-10

Percent of loans with foreclosure initiation in quarter



Foreclosure rates for United States and New England states, Q1-10

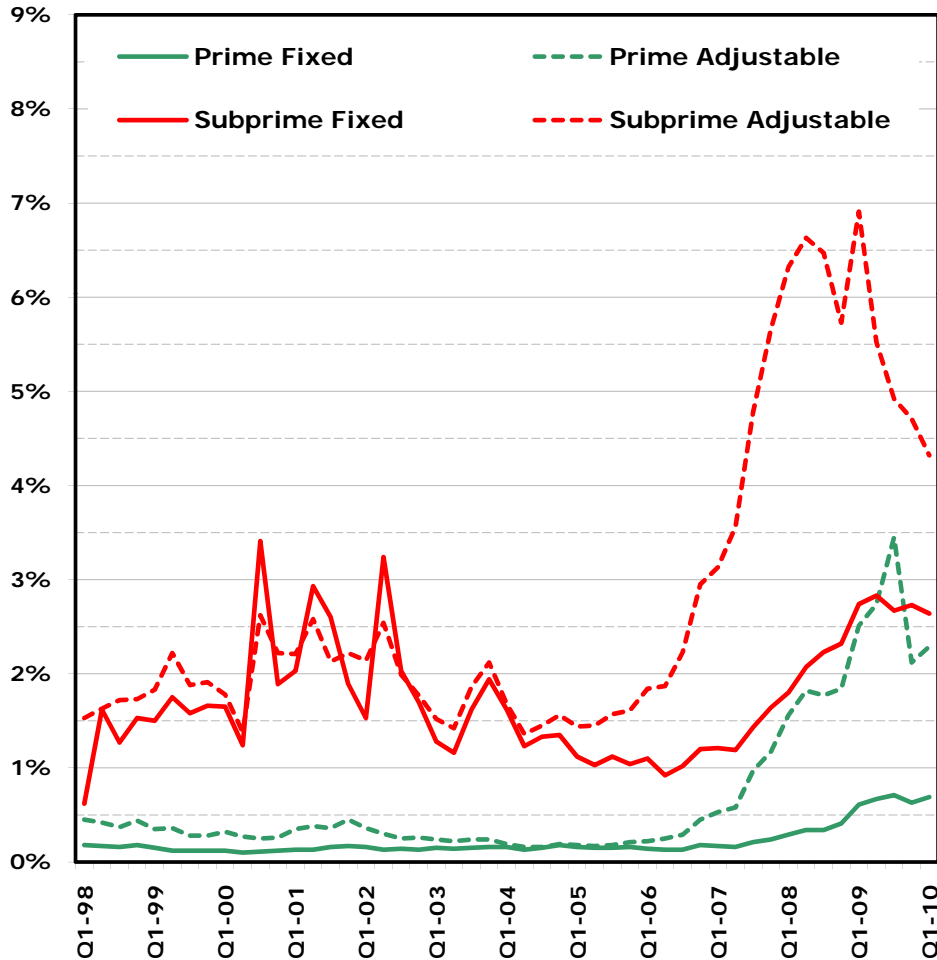
Percent of loans with foreclosure initiation in quarter



Foreclosure rates for United States and Massachusetts, major conventional loan categories, through Q1-10

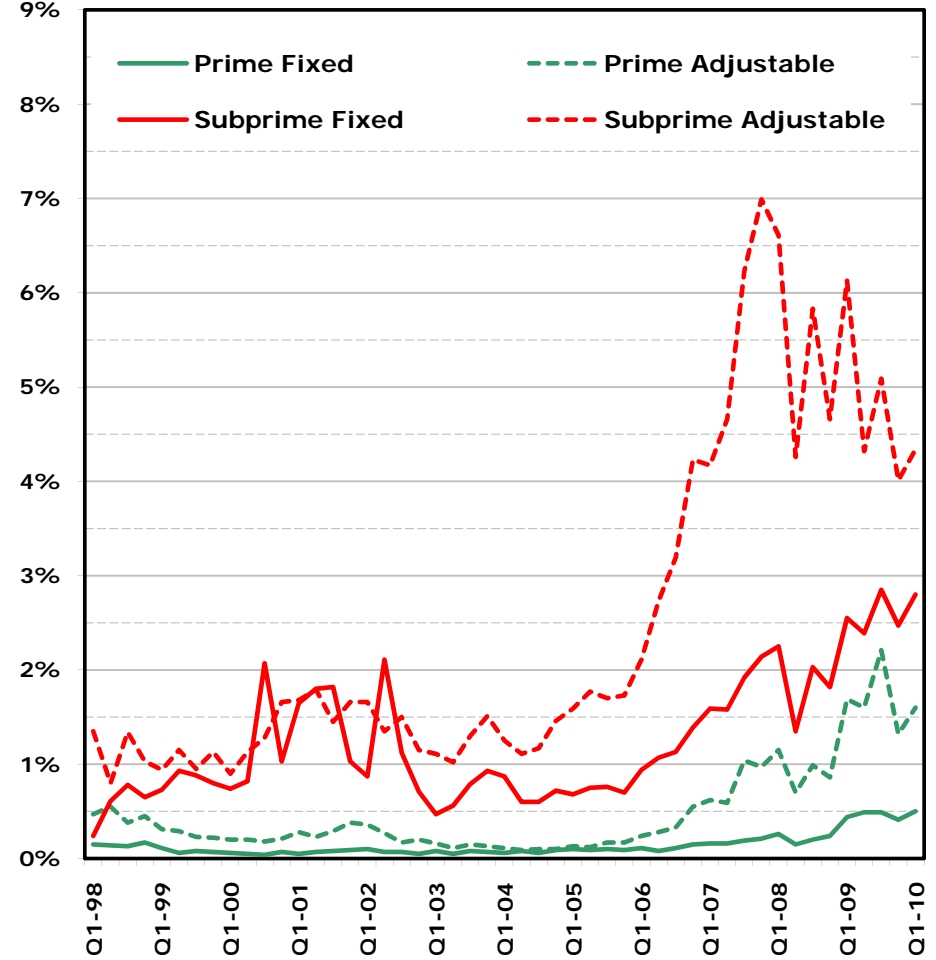
United States

Percent of loans with foreclosure initiation in quarter



Massachusetts

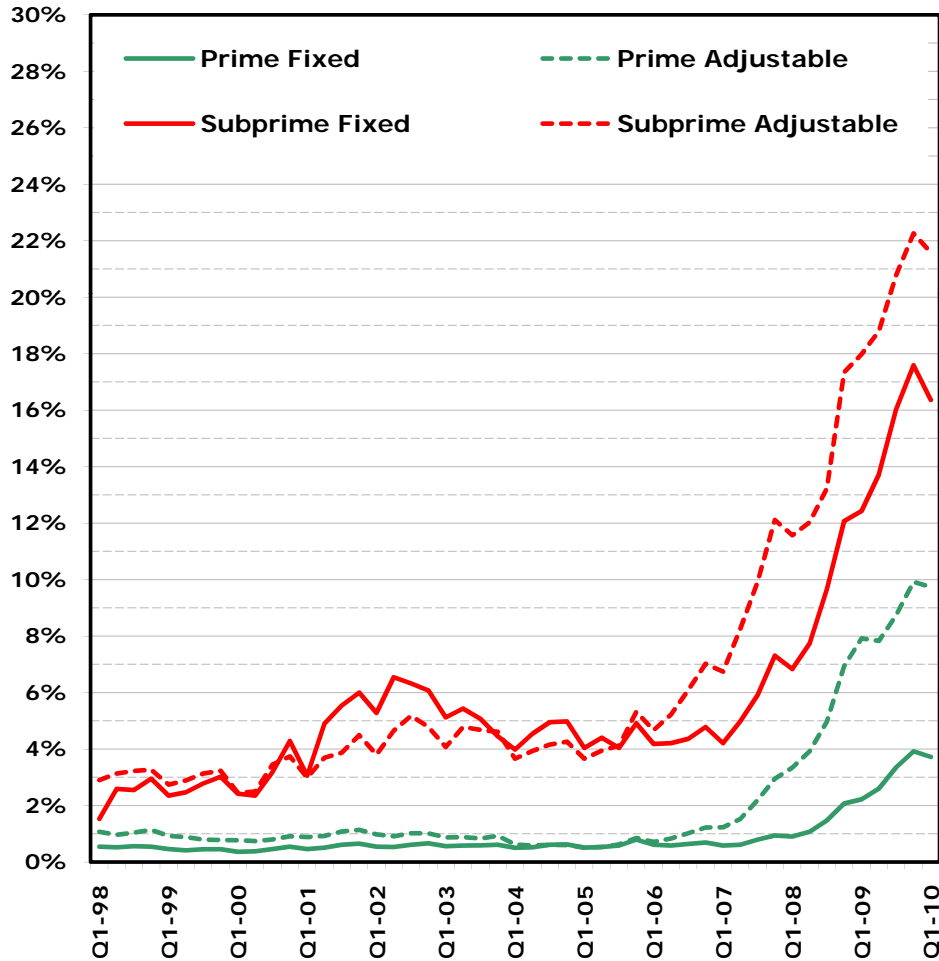
Percent of loans with foreclosure initiation in quarter



60-day+ delinquency rates for U.S. and Massachusetts, major conventional loan categories, through Q1-10

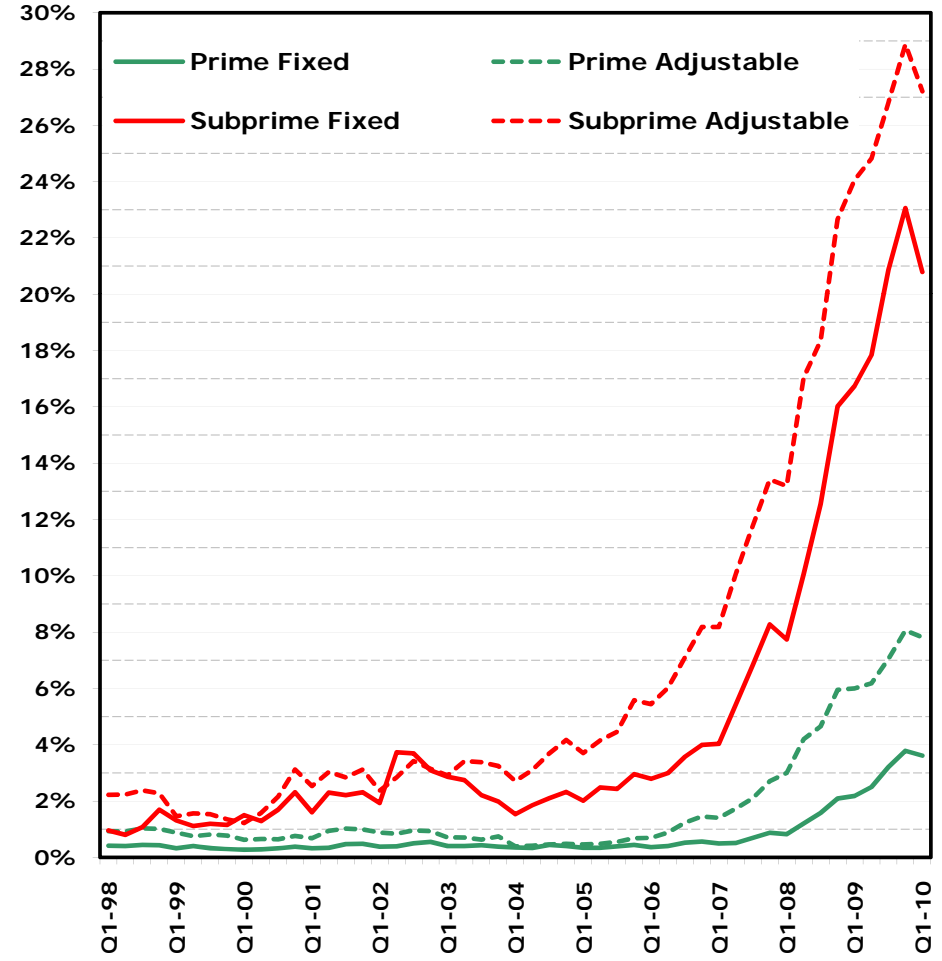
United States

Percent of loans with 60-day+ delinquency in quarter



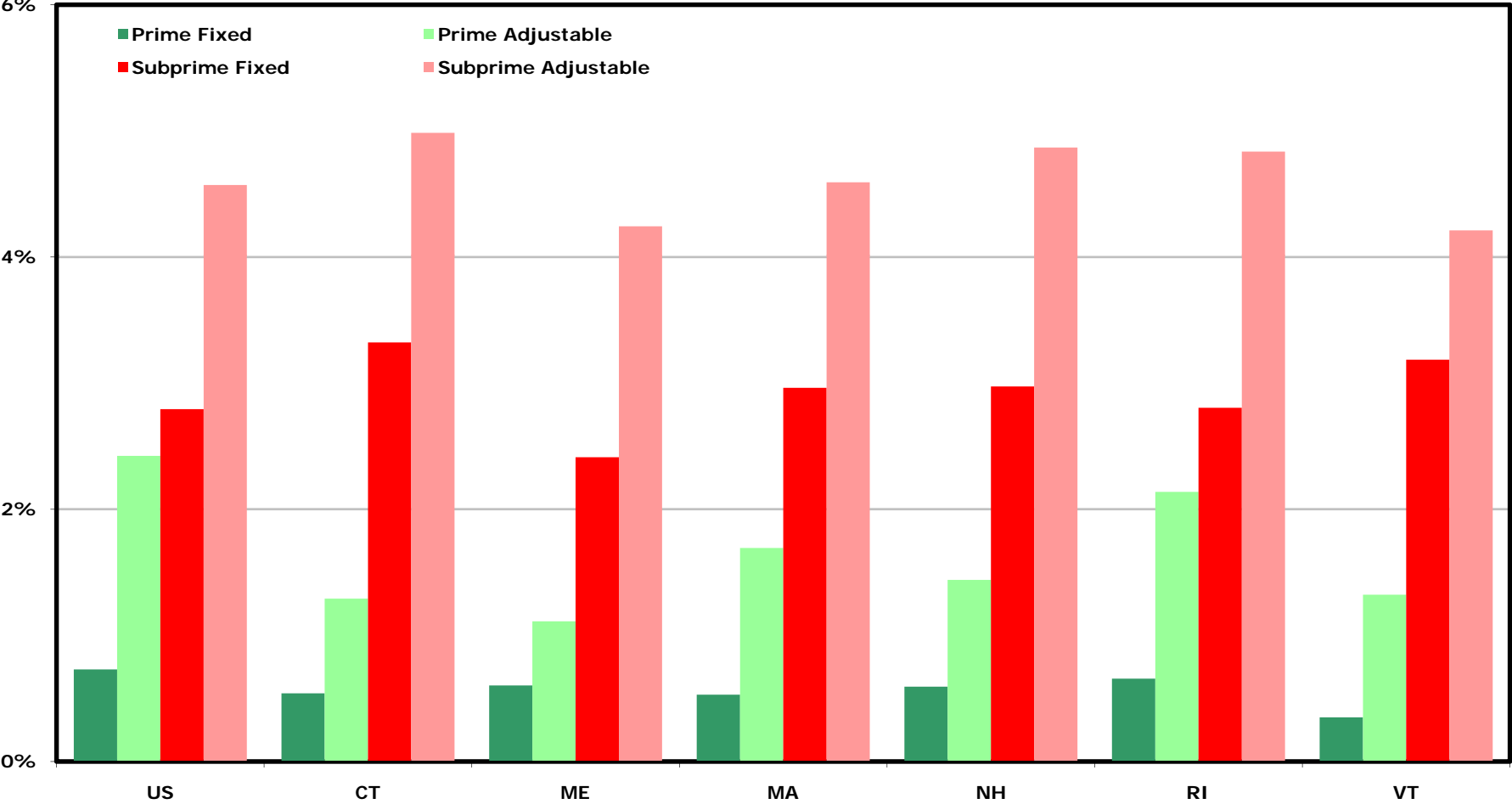
Massachusetts

Percent of loans with 60-day+ delinquency in quarter



Foreclosure rates for U.S. and New England states, major conventional loan categories, Q1-10

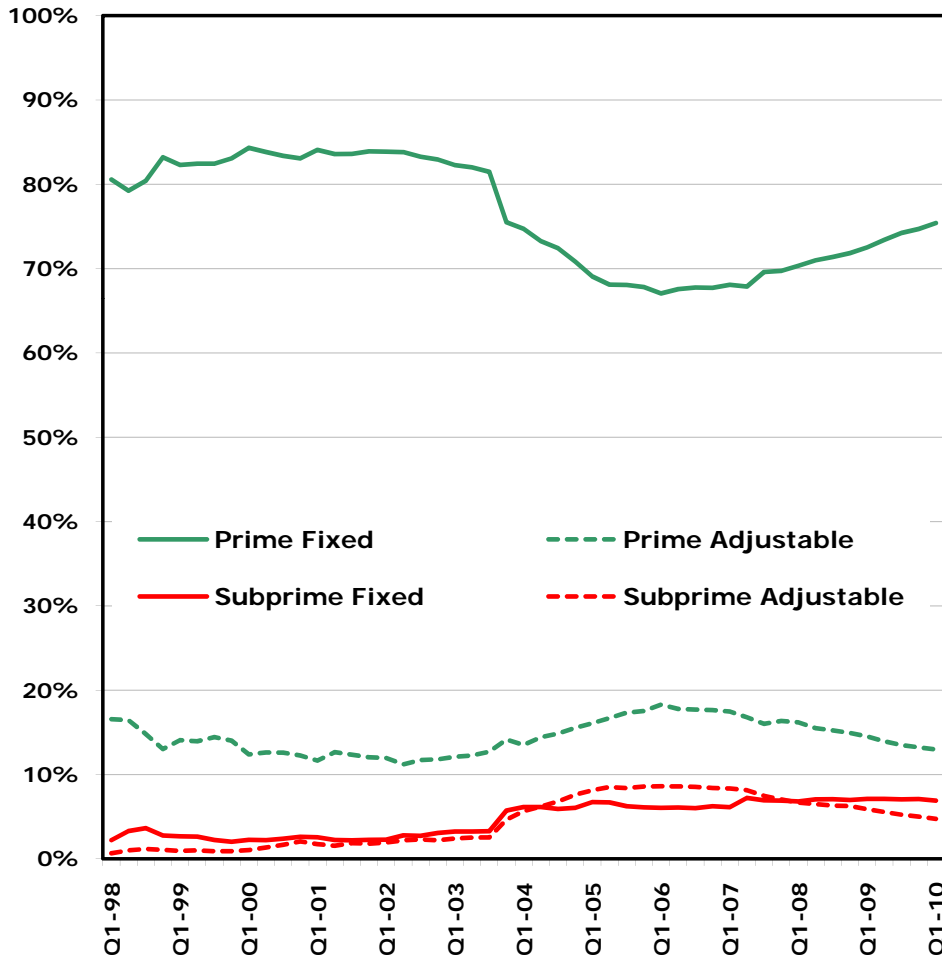
Percent of loans with foreclosure initiation in quarter



Market share for United States and Massachusetts, major conventional loan categories, through Q1-10

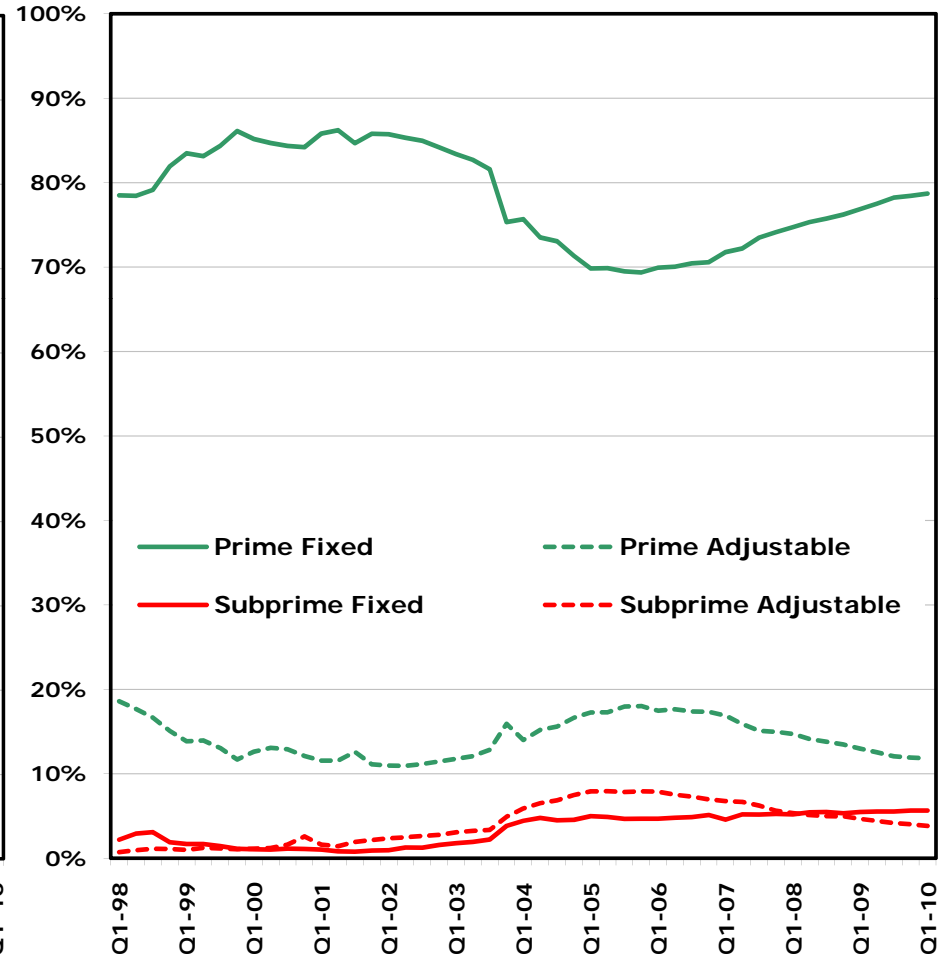
United States

Market share (quarterly values sum to 100%)



Massachusetts

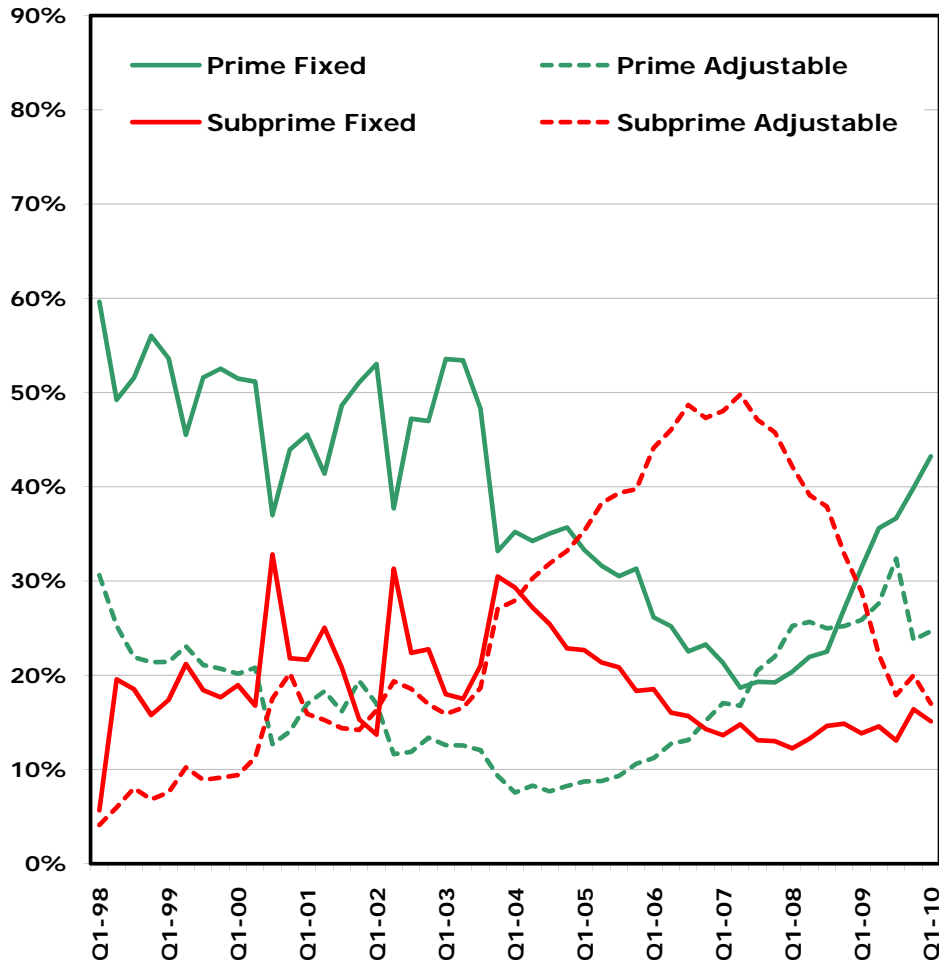
Market share (quarterly values sum to 100%)



Product foreclosure share for U.S. and Massachusetts, major conventional loan categories, through Q1-10

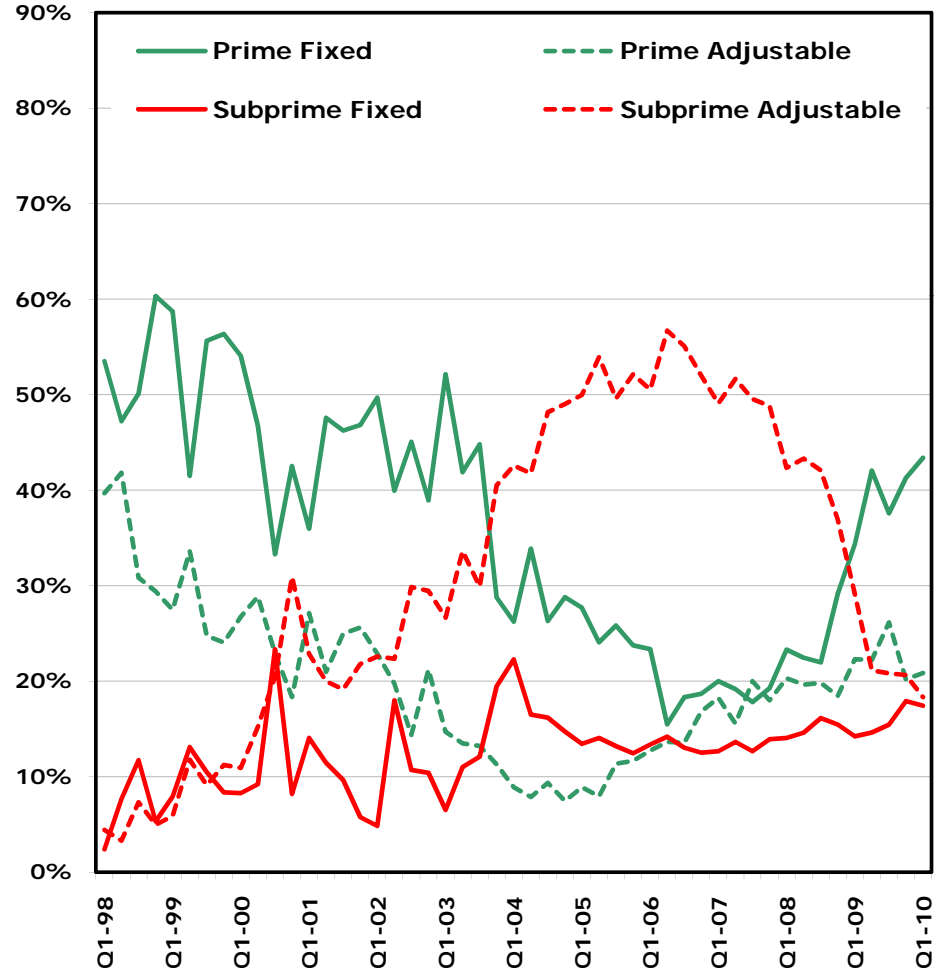
United States

Foreclosure share (quarterly values sum to 100%)



Massachusetts

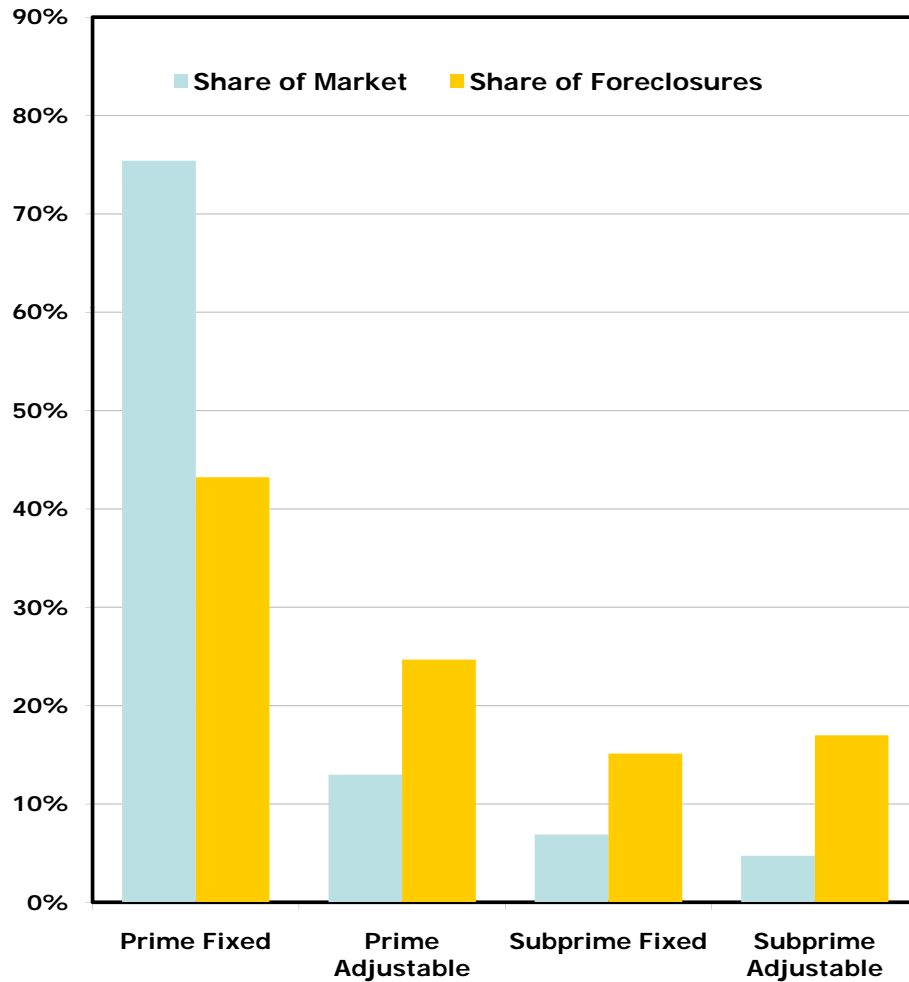
Foreclosure share (quarterly values sum to 100%)



Market and foreclosure share for U.S. and Massachusetts, major conventional loan categories, Q1-10

United States

Market and foreclosure share



Massachusetts

Market and foreclosure share

