

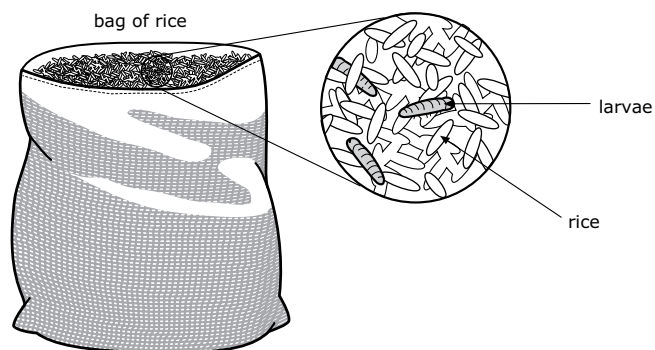
Write down what happens to plants and fish in a river when a factory pours large amounts of hot water into the river.

Item Number: S011019

Minerals are used for making many things including jewelry, chalk, and concrete. Where do we get the minerals needed to make these things?

- Ⓐ from air
- Ⓑ from wood
- Ⓒ from rocks
- Ⓓ from crops

Item Number: S031398



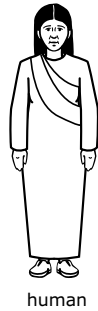
Larvae were found in a bag of rice. What best explains how the larvae got there?

- (A) They came from water in the bag.
- (B) They came from air in the bag.
- (C) They came from the rice itself.
- (D) They came from eggs laid by insects.

Item Number: S031003

Children grow taller and become heavier as they develop into adults.
Describe one other physical change that takes place in children's bodies as they become adults.

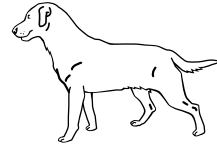
Item Number: S031251



human



frog



dog



butterfly



bird



whale

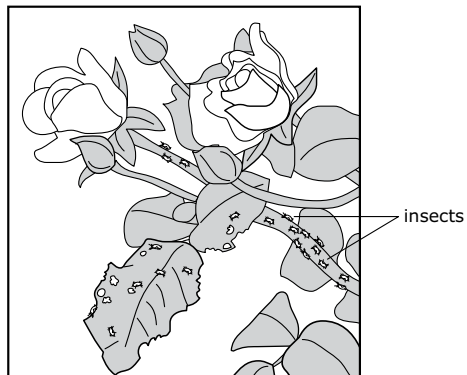
Some of the organisms shown above give birth to young that develop inside the mother. Some of the organisms have young that hatch from eggs that are laid outside the mother.

In the table below, write down the names of the organisms that belong to each group.

Organisms that give birth	Organisms that lay eggs

Item Number: S031252

Rebecca noticed that the leaves on her rose bushes were getting eaten by insects as shown in the picture below.



Rebecca was planning to use insect spray to kill the insects. Her friend Gwen said that the insect spray might kill other insects that are important for some of the flowering plants in the garden.

Why are some insects important for flowering plants?

Item Number: S031443

Which of these insects is correctly paired with its young form?

Housefly



(A)

Mosquito



(B)

Grasshopper



(C)

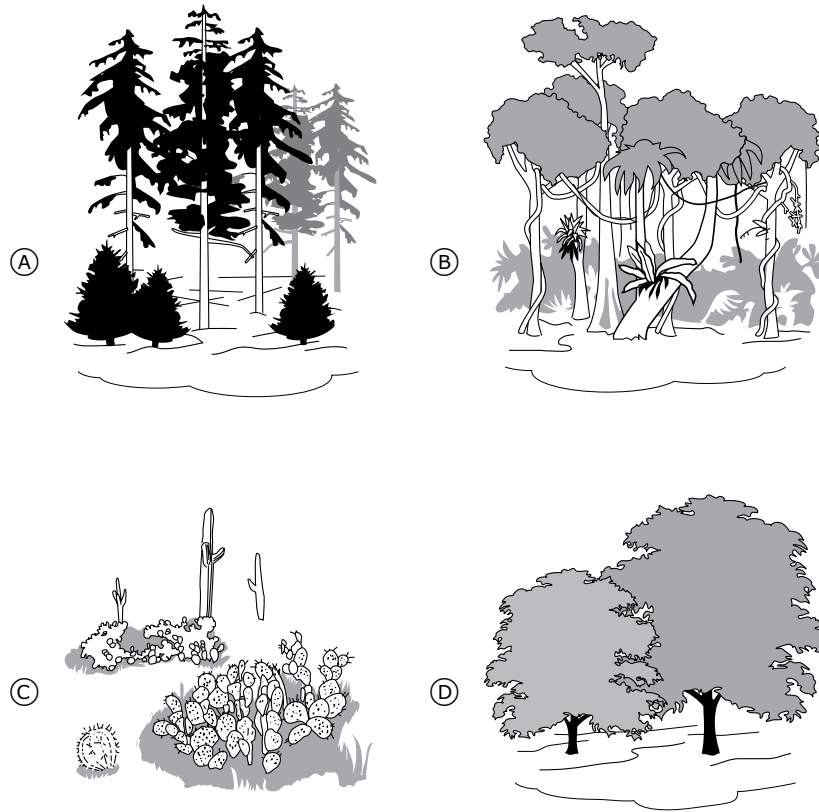
Butterfly



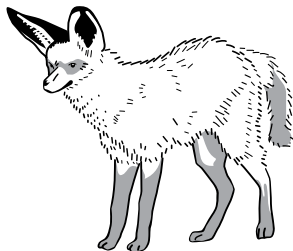
(D)

Item Number: S031017

Which of these types of plants are usually found growing in a tropical rain forest?



Item Number: S031287



Animals usually have physical features that help them live in certain places. Look at the picture shown above. This animal lives in a hot desert.

What physical feature does this animal have that helps it lose heat?

- (A) a thick coat of fur
- (B) a bushy tail
- (C) small eyes
- (D) large ears

Item Number: S031284

Rebecca moved into a new house. She wanted to grow plants in different areas of her garden.

A. Rebecca knows that plants need light to grow.
Why do plants need light to grow?

B. Plants also need water to grow.
Name one other thing plants need in order to grow well.

Item Number: S031439A

Rebecca moved into a new house. She wanted to grow plants in different areas of her garden.

A. Rebecca knows that plants need light to grow.
Why do plants need light to grow?

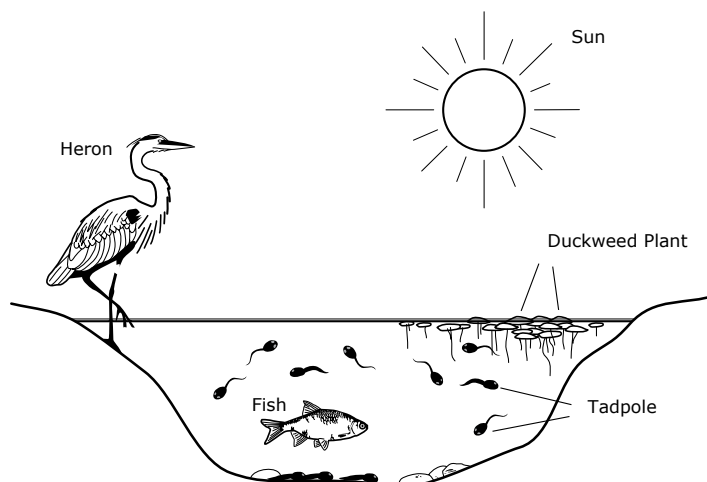
B. Plants also need water to grow.
Name one other thing plants need in order to grow well.

Item Number: S031439B

Which animal eats only plants?

- Ⓐ Cat
- Ⓑ Dog
- Ⓒ Lion
- Ⓓ Rabbit

Item Number: S011010

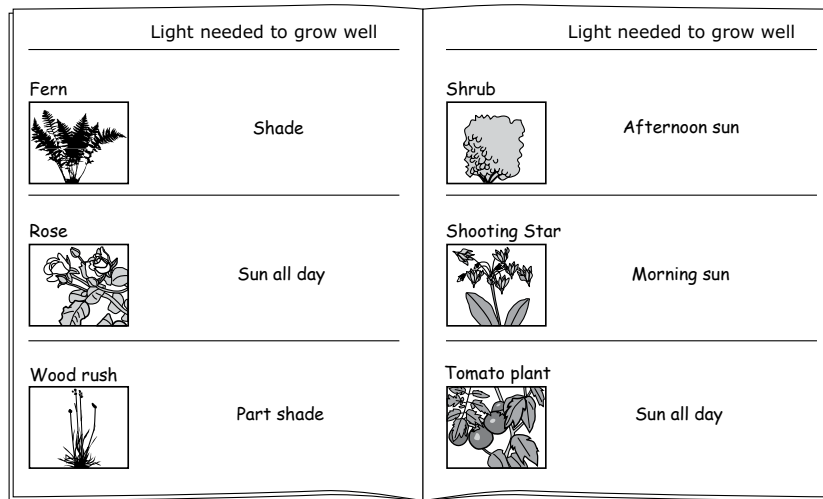


The picture above shows a pond and some of the organisms that live in and around the pond. They all depend on each other for food. The tadpole most likely gets its food from which of the following?

- (A) sun
- (B) fish
- (C) duckweed plant
- (D) heron

Item Number: S031338

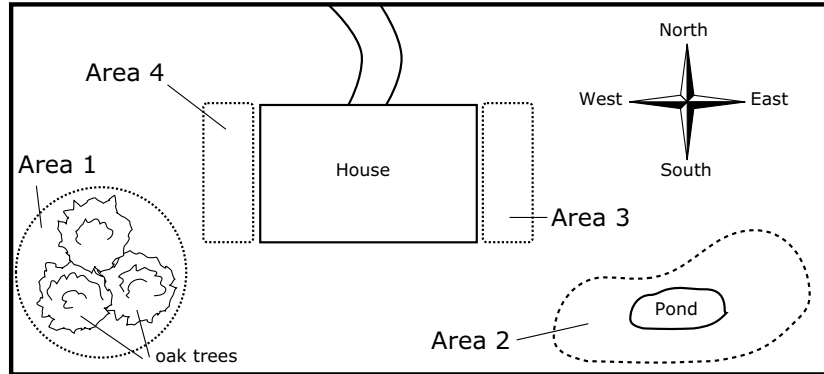
Rebecca wanted to plant each area with different types of plants. She collected pictures of her favorite plants and found out how much sunlight they needed to grow well. She put the pictures and the information she found into a scrap book as shown below.



- A. Rebecca wanted to grow roses in Area 1 under the oak trees. Her friend Gwen disagreed and told her that the roses would **not** grow well in Area 1. Explain why Gwen says this.

Continued

Item Number: S031441A

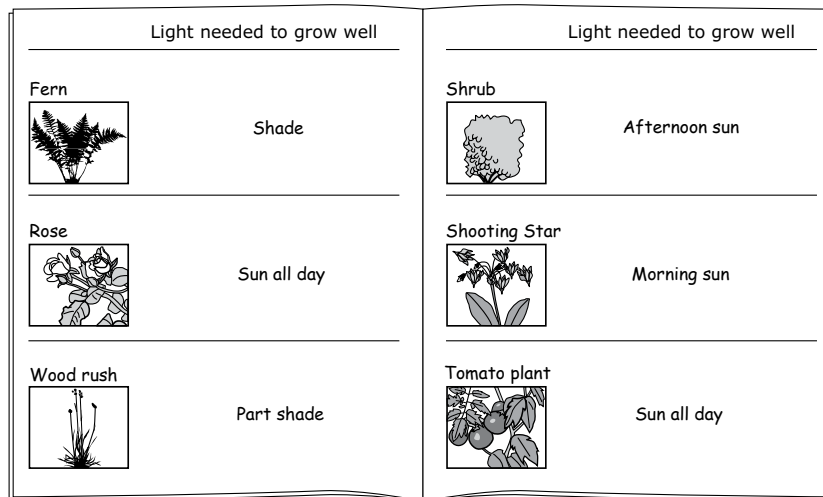


B. Look at the information for each plant given in Rebecca's scrap book and the plan of her garden above. Write the names of the plants that would grow best in each area in the boxes below.

Area 1	
Area 2	
Area 3	
Area 4	

Item Number: S031441A

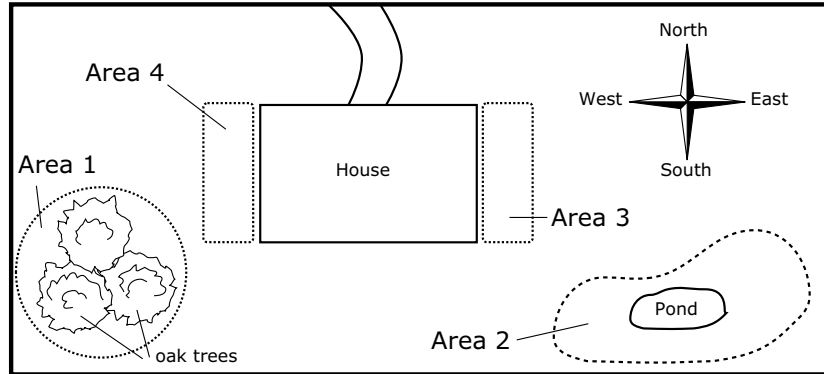
Rebecca wanted to plant each area with different types of plants. She collected pictures of her favorite plants and found out how much sunlight they needed to grow well. She put the pictures and the information she found into a scrap book as shown below.



- A. Rebecca wanted to grow roses in Area 1 under the oak trees. Her friend Gwen disagreed and told her that the roses would **not** grow well in Area 1. Explain why Gwen says this.

Continued

Item Number: S031441B



B. Look at the information for each plant given in Rebecca's scrap book and the plan of her garden above. Write the names of the plants that would grow best in each area in the boxes below.

Area 1	
Area 2	
Area 3	
Area 4	

Item Number: S031441B

How can washing your hands help keep you from getting sick?

- Ⓐ It washes away germs.
- Ⓑ It makes your hands look nice.
- Ⓒ It keeps your skin from drying out.
- Ⓓ It makes your hands warmer.

Item Number: S011031

People need to protect themselves from getting too much sun. Name one thing that can happen to their bodies if they are not protected from the sun.

Item Number: S031330

Which plant is grown for food?

- Ⓐ Rice
- Ⓑ Tobacco
- Ⓒ Orchid
- Ⓓ Cotton

Item Number: S011021

What will most likely affect your adult height?

- Ⓐ The height of your parents
- Ⓑ The height of your brothers and sisters
- Ⓒ Your hair color
- Ⓓ Your weight

Item Number: S011033

A plant has yellow flowers. What best explains why the flowers are yellow?

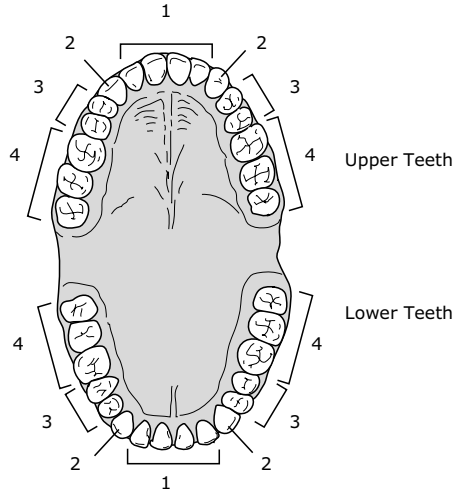
- Ⓐ The sunshine colored the flowers yellow.
- Ⓑ The flowers of the parent plants were yellow.
- Ⓒ It was very warm when they flowered.
- Ⓓ It rained every day.

Item Number: S031269

If the body takes in more food than it uses,

- Ⓐ breathing becomes faster.
- Ⓑ weight is lost.
- Ⓒ the heart rate increases.
- Ⓓ the food is stored as fat.

Item Number: S011004

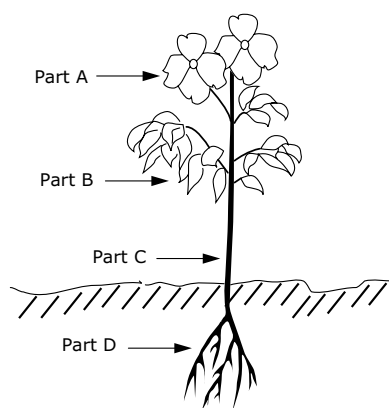


The teeth that people use for grinding their food are labeled in the picture as

- (A) 1 only
- (B) 3 only
- (C) 1 and 2
- (D) 3 and 4

Item Number: S011015

Which part of the plant takes in the MOST water?



- (A) Part A
- (B) Part B
- (C) Part C
- (D) Part D

Item Number: S011026

Beth is playing soccer. She gets very hot. Name one thing her body does to cool down.

Item Number: S031246

Where does air go when a person breathes in?

- Ⓐ Into the heart
- Ⓑ Into the stomach
- Ⓒ Into the lungs
- Ⓓ Into the liver

Item Number: S011025

Humans interpret seeing, hearing, tasting and smelling in the

- Ⓐ brain
- Ⓑ spinal cord
- Ⓒ receptors
- Ⓓ skin

Item Number: S012033

Immediately before and after running a 50 meter race, your pulse and breathing rates are taken. What changes would you expect to find?

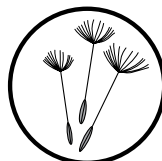
- Ⓐ no change in pulse but a decrease in breathing rate
- Ⓑ an increase in pulse but no change in breathing rate
- Ⓒ an increase in pulse and breathing rate
- Ⓓ a decrease in pulse and breathing rate
- Ⓔ no change in either

Item Number: S012010

Rebecca planted her garden. After a few months, she noticed some plants growing that she had not planted. She knew that the plants must have grown from seeds. She collected some seeds from one of the plants. The plant and seeds are shown in the picture below.



Plant



Seeds

How did the seeds most likely get into her garden?

Item Number: S031442

Which one of these animals does NOT lay eggs?

- Ⓐ chickens
- Ⓑ dogs
- Ⓒ frogs
- Ⓓ turtles

Item Number: S011016

Are plants living or nonliving?

(Check one box.)

Living

Nonliving

Explain your answer.

Item Number: S031218

Which group consists only of living things?

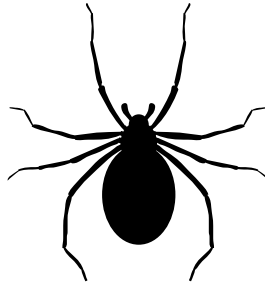
- Ⓐ rabbit, seed, bird
- Ⓑ seed, bird, wind
- Ⓒ volcano, candle, rabbit
- Ⓓ wind, candle, volcano

Item Number: S031212

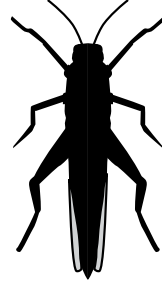
Which of these are insects?



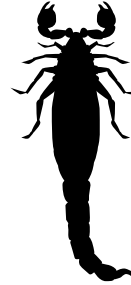
1



2



3



4

- (A) 1 and 3 only
- (B) 1 and 4 only
- (C) 2 and 4 only
- (D) 3 and 4 only

Item Number: S031349

Item Index 1995



Content Domain	Page	Content Domain	Page
Earth Science		Physical Science	
N1	2	N4	38
O4	3	N7	39
O9	4	N8	40
Y1	5	N9	41
Z1A	6	O1	42
Z1B	7	O5	43
		O8	44
		P3	45
		P4	46
		P5	47
		P7	48
		Q3	49
		Q4	50
		Q8	51
		Q9	52
		R1	53
		R5	54
		R8	55
		R9	56
		W1	57
		X1	58
		Z3	59
		Environmental Issues and the Nature of Science	
		O6	60
		P6	61
		Q7	62
		R2	63
		W5A	64
		W5B	65
		X3	66
Life Science			
N2	8		
N3	9		
N5	10		
N6	11		
O2	12		
O3	13		
O7	14		
P1	15		
P2	16		
P8	17		
P9	18		
Q1	19		
Q2	20		
Q5	21		
Q6	22		
R3	23		
R4	24		
R6	25		
R7	26		
W2	27		
W3	28		
W4	29		
X2	30		
X4	31		
X5	32		
Y2A	33		
Y2B	34		
Y3A	35		
Y3B	36		
Z2	37		

Item Index 2003



Content Domain

Page

Content Domain

Page

Physical Science

S011008	Which decays fastest	67
S031061	Candle flame last to go out	68
S031420	Activity that results in new material	69
S011006	What strong magnets separate	70
S031035	Common substances that dissolve in water	71
S031406A	Objects made of metals/name	72
S031406B	Objects made of metals/property	73
S031409	True statement for all objects	74
S031053	Identify wood, rock and iron	75
S031038	Which bulb will light	76
S031306	Figure where two magnets repel	77
S011011	Renewable energy source	78
S011001	Objects floating in water	79
S031313	Which can make objects repel	80
S011009	Weight on scale	81
S011014	Why made of copper	82
S031072	Two things wrong with the shadow	83
S011029	Which could cause rainbow	84
S011017	Soap bubbles	85
S011030	Boiling water	86
S031370	Difference between solids and liquids	87
S031372A	Solid, liquid, and gas in a container/identify	88
S031372B	Solid, liquid, and gas in a container/explain	89
S031005	Closed glass bottle filled with water	90

Earth Science

S011027	Which diagram shows shadow	91
S011018	Which is hottest	92
S011022	Earth's movement	93
S031060	How much time to next full moon	94
S031440	Garden: which side of the house gets most sun	95
S011032	Direction of water	96
S031382	Water vapor when it gets cold	97
S011005	Where are fossils found	98
S031383	Town where it is most likely to snow	99
S011007	Saltiest water	100
S012007	Layers of Earth	101
S031082	Rock carried farthest down the river	102
S011003	Earth's surface	103
S011012	Gas we need to breathe	104
S011013	Iron and aluminum	105
S011023	Terry's rocks	106
S031379	Best location to grow crops	107

Life Science

S011019	Plants and fish in river	108
S031398	Where we get minerals to make things	109
S031003	Larvae found in a bag of rice	110
S031251	Physical change as children become adults	111
S031252	Organisms that give birth or lay eggs	112
S031443	Garden: why insects are important for flowering plants	113
S031017	Insect correctly paired with its young form	114
S031287	Plant found in tropical rain forest	115
S031284	Physical feature to get rid of body heat	116
S031439A	Garden: why plants need light to grow	117
S031439B	Garden: one other thing plants need to grow	118
S011010	Herbivorous animal	119
S031338	Where tadpole gets its food	120
S031441A	Garden: why roses will not grow under oak trees	121
S031441B	Garden: plants that grow well in four areas	123
S011031	Washing hands	125
S031330	Protection from the sun	126
S011021	Plant grown for food	127
S011033	Effect on adult height	128
S031269	Explain yellow color of a plant	129
S011004	Body's use of excess food	130
S011015	Teeth	131
S011026	Plants and water absorption	132
S031246	What the body does to cool down	133
S011025	Air when a person breathes	134
S012033	Interpretation of senses	135
S012010	Pulse/breathing rate after exercise	136
S031442	Garden: how seeds get into garden	137
S011016	Which doesn't lay eggs	138
S031218	Are plants living or nonliving	139
S031212	Group that consists only of living things	140
S031349	Which are insects	141