

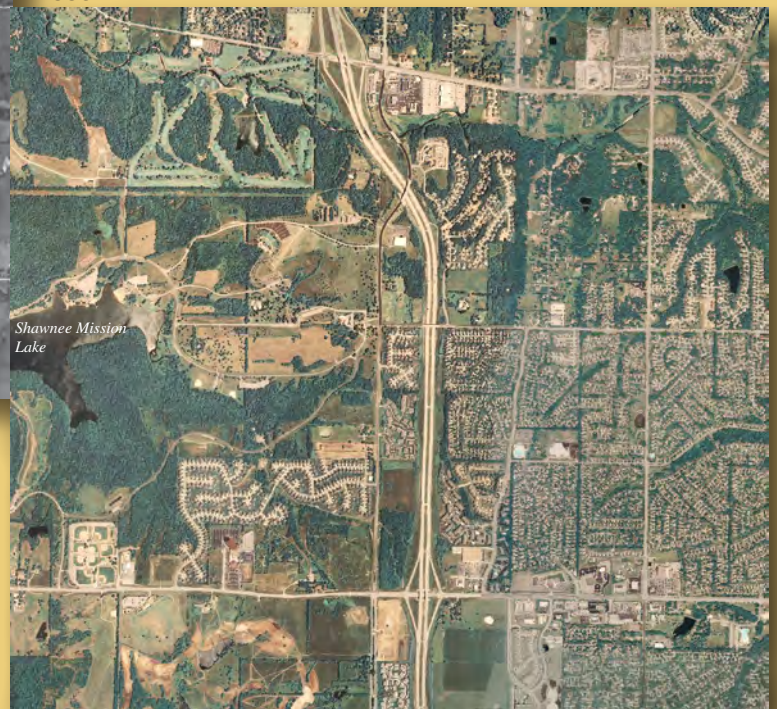
Prepared in cooperation with the
JOHNSON COUNTY STORMWATER MANAGEMENT PROGRAM

Bottom-Sediment Accumulation and Quality in Shawnee Mission Lake, Johnson County, Kansas, 2006

1966



2006



Scientific Investigations Report 2007–5274
Revised August 2009

Bottom-Sediment Accumulation and Quality in Shawnee Mission Lake, Johnson County, Kansas, 2006

By Casey J. Lee, Kyle E. Juracek, and Christopher C. Fuller

In cooperation with the Johnson County Stormwater Management Program

Scientific Investigations Report 2007–5274
Revised August 2009

**U.S. Department of the Interior
U.S. Geological Survey**

U.S. Department of the Interior
DIRK KEMPTHORNE, Secretary

U.S. Geological Survey
Mark D. Myers, Director

U.S. Geological Survey, Reston, Virginia: 2008
Revised: 2009

For product and ordering information:
World Wide Web: <http://www.usgs.gov/pubprod>
Telephone: 1-888-ASK-USGS

For more information on the USGS—the Federal source for science about the Earth, its natural and living resources, natural hazards, and the environment:

World Wide Web: <http://www.usgs.gov>
Telephone: 1-888-ASK-USGS

Any use of trade, product, or firm names is for descriptive purposes only and does not imply endorsement by the U.S. Government.

Although this report is in the public domain, permission must be secured from the individual copyright owners to reproduce any copyrighted materials contained within this report.

Suggested citation:

Lee, C.J., Juracek, K.E., and Fuller, C.C., 2007, Bottom-sediment accumulation and quality in Shawnee Mission Lake, Johnson County, Kansas, 2006: U.S. Geological Survey Scientific Investigations Report 2007–5274, 10 p. (Revised August 2009)

Contents

| | |
|---|----|
| Abstract..... | 1 |
| Introduction..... | 1 |
| Purpose and Scope | 1 |
| Acknowledgements..... | 1 |
| Methods..... | 2 |
| Sample Collection and Laboratory Methods..... | 2 |
| Quality Control | 3 |
| Age and Accumulation Rates of Lake-Bottom Sediment..... | 3 |
| Nutrient and Trace Element Concentrations..... | 8 |
| Summary..... | 8 |
| References Cited..... | 10 |

Figures

1. Map showing urban development in and near the Shawnee Mission Lake watershed, Johnson County, Kansas, 20062
2. Photograph showing pontoon boat mounted with gravity corer used to collect bottom sediment cores from Shawnee Mission Lake, May and November 20063
3. Graph showing total precipitation and number of days in which greater than 1 inch of rainfall was recorded, Olathe, Kansas, 1960–2006.....4
4. Graphs showing cesium-137 and excess lead-210 activity in relation to core depth and estimated year of deposition in Shawnee Mission Lake bottom sediment7
5. Graphs showing selected nutrient and trace element profiles in bottom-sediment cores from three Johnson County lakes.....9

Tables

1. Concentrations of radionuclides, nutrients, and trace elements in core 1, Shawnee Mission Lake bottom sediment, Johnson County, Kansas, May 2006.....6
2. Bulk density and concentrations of radionuclides in core 2, Shawnee Mission Lake bottom sediment, Johnson County, Kansas, November 2006.....7

Conversion Factors, Abbreviations, and Datum

| Multiply | By | To obtain |
|--|------------|--|
| Length | | |
| inch (in.) | 2.54 | centimeter (cm) |
| foot (ft) | 0.3048 | meter (m) |
| micron (μm) | 0.00003937 | inch (in.) |
| mile (mi) | 1.609 | kilometer (km) |
| Area | | |
| acre | 4,047 | square meter (m^2) |
| Mass | | |
| gram (g) | 0.002205 | pound (lb) |
| Density | | |
| pound per cubic foot (lb/ft^3) | .01602 | gram per cubic centimeter (g/cm^3) |
| Rate | | |
| inch per year (in/yr) | 2.54 | centimeter per year (cm/yr) |
| Concentration | | |
| milligram per kilogram (mg/kg) | 1.0 | part per million (ppm) |

Horizontal coordinate information is referenced to the North American Datum of 1983 (NAD 83).

Bottom-Sediment Accumulation and Quality in Shawnee Mission Lake, Johnson County, Kansas, 2006

By Casey J. Lee, Kyle E. Juracek, and Christopher C. Fuller

Abstract

Shawnee Mission Lake is an artificial impoundment central to Shawnee Mission Park, the largest public park in Johnson County, Kansas. The Shawnee Mission Lake watershed has remained relatively undeveloped since the completion of the dam in 1962. However, recent (1990–2006) urban development has been a cause for concern regarding the quantity and quality of sediment entering the reservoir. The U.S. Geological Survey collected two cores of bottom sediment to assess sediment accumulation and quality in Shawnee Mission Lake. Results from this study indicate that sediment accumulation has remained relatively constant from 1970–2006 at the downstream portion of the reservoir. Runoff from urban portions of the watershed are likely responsible for larger concentrations of selected trace elements in more recently deposited reservoir sediment. Information provided in this report can be used by Johnson County officials to help determine the current and future recreational capacity of the lake.

Introduction

In 1954, 1,248 acres of land were purchased by the Shawnee Mission Park District in north-central Johnson County, Kansas, for the development of a “big outdoor community playground” named Shawnee Mission Park (Barnes, 1956) (fig. 1). The centerpiece of the park is Shawnee Mission Lake, a 150-acre reservoir completed in 1962. The lake is one of the largest reservoirs in Johnson County, supporting swimming, boating, and fishing for area residents. Artificial impoundments such as Shawnee Mission Lake retain water and suspended sediment contributed by the surrounding watershed. Sediment accumulation in surface-water impoundments decreases water-storage capacity and can degrade the recreational and aesthetic value of the lake (Morris and Fan, 1997).

Watersheds with little or no land disturbance typically yield the least amount of suspended sediment. Construction activities associated with urban development have been shown to increase stream-sediment loads by 100 times when compared to reference conditions (Wolman, 1967). After development, impervious surfaces, such as roads, driveways,

and rooftops, route rainwater directly into streams, increasing stream velocities and the erosion of sediment from stream channels (Leopold and others, 2005). Nutrients, trace elements, and radionuclides adsorbed to sediment can act to degrade water quality in streams and lakes. Analysis of these chemical constituents in lake-bottom sediment can provide a history of sediment loading and quality in the watershed, which then can be related to changes in land use.

Prior to residential construction, the 1,860-acre Shawnee Mission Lake watershed was characterized by undisturbed, timbered rolling hills. Because of concerns regarding recent (1990–2006) urban development in the Shawnee Mission Lake watershed, the U.S. Geological Survey (USGS), in cooperation with the Johnson County Stormwater Management Program, undertook a study of sediment deposition and quality in Shawnee Mission Lake.

Purpose and Scope

This report describes bottom-sediment accumulation and quality in Shawnee Mission Lake. The U.S. Geological Survey collected two cores of bottom sediment in 2006 from Shawnee Mission Lake to estimate the amount of sediment deposition from 1962–2006 and to characterize the quality of sediment using historical reconstruction techniques (Juracek, 2004; Van Metre and others, 2004). Results of nutrient, trace element, and radionuclide analysis of sediment cores collected in 2006 are described. These results support Federal, State, and local watershed efforts to improve water quality and to identify processes leading to increased transport of fluvial sediment. Information provided in this study can be used by Johnson County officials to help determine the current and future recreational capacity of Shawnee Mission Lake.

Acknowledgments

The authors are grateful to the Johnson County Museum for access to historical newspapers and aerial photography. The authors also thank Shannon Porter of the Johnson County Automated Information Mapping System for

2 Bottom-Sediment Accumulation and Quality in Shawnee Mission Lake, Johnson County, Kansas, 2006

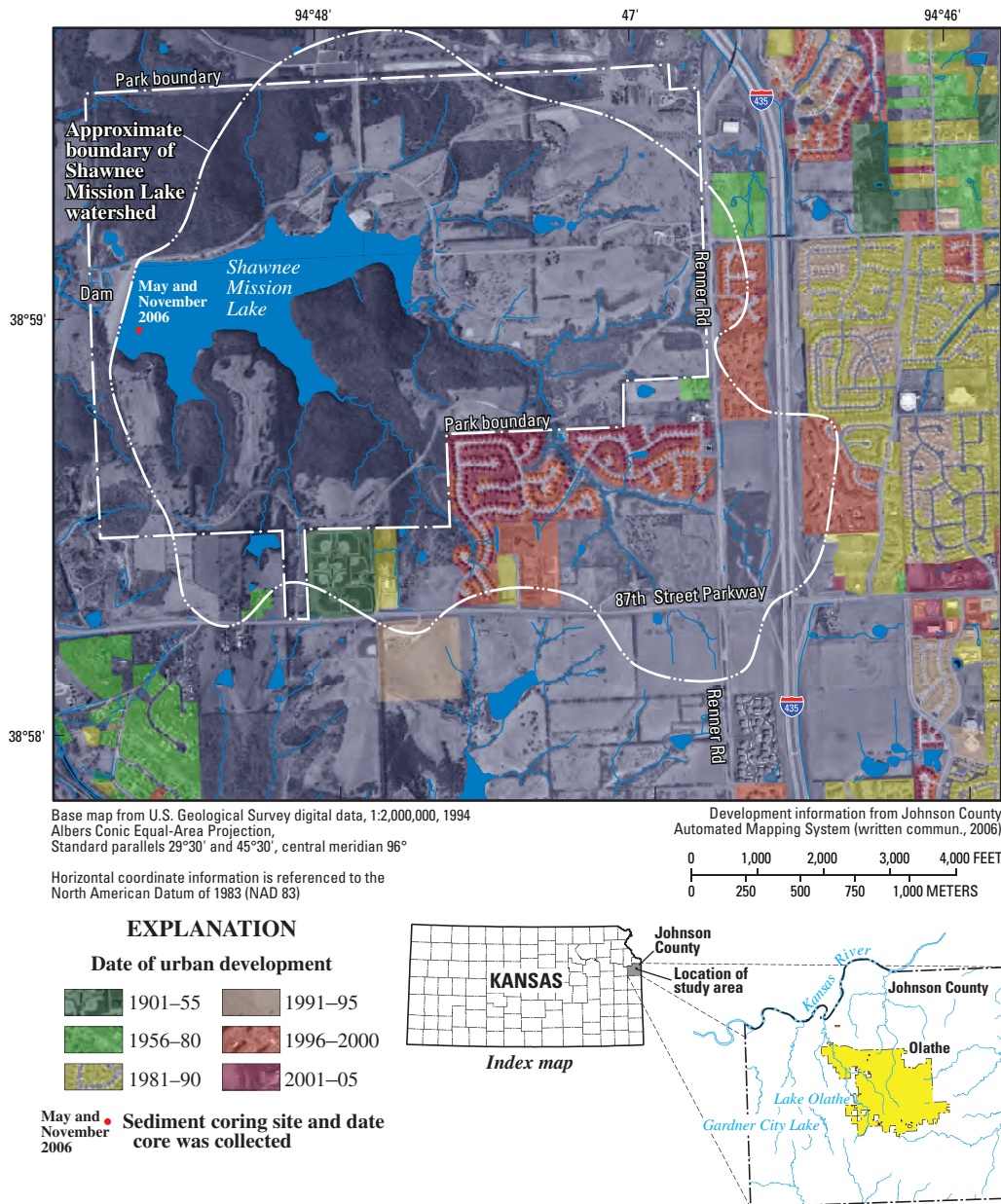


Figure 1. Urban development in and near the Shawnee Mission Lake watershed, Johnson County, Kansas, 2006.

assistance in obtaining and working with geographic information system data.

Methods

Sample Collection and Laboratory Methods

Two cores of bottom sediment from Shawnee Mission Lake (fig. 1) were collected in May (core 1) and November of 2006 (core 2) using a gravity corer (fig. 2). Sediment cores were collected near the dam (fig. 1) because sediment accumulation there is typically the most homogenous and least prone to disturbance (Van Metre and others, 2004). Water depth at the coring sites was approximately 40 ft; the gravity corer

was dropped into the sediment from a height of approximately 10 ft above the lake bottom. Although several cores were collected in May and November 2006, recovering a range of 10 to 21 in. of sediment, the two cores that were selected for analysis penetrated to original, pre-impoundment soils, which were distinguished from entrained sediment by the presence of rocks and root hairs. The use of a gravity corer can result in collection of a sediment profile shorter than the amount of actual sediment deposition. This “core shortening” results from the friction of the sediment against the inner wall of the sample tube and may not be uniform throughout the core. Studies in Kansas reservoirs have indicated core recoveries in the range of 50 to 75 percent of deposited sediments (Juracek, 2004).

Core 1 penetrated impoundment soils to a depth of 20.5 inches and was sampled every 2 inches. Core 2



Figure 2. Photograph showing pontoon boat mounted with gravity corer used to collect bottom sediment cores from Shawnee Mission Lake May and November 2006.

penetrated impoundment sediment to a depth of 13 inches, and was subsampled every 1 inch. Core 1 was used for analysis of 4 radionuclides, nitrogen, phosphorus, and 27 trace elements; core 2 was analyzed for bulk density and radionuclides. Bulk-density analysis was performed using methods described in Guy (1969). Radionuclides were analyzed at the USGS laboratory in Menlo Park, California, using a high-resolution gamma spectrometer with an intrinsic germanium detector (Robbins and Edgington, 1986; Fuller and others, 1999). Nutrient and trace element analysis of lake sediment was performed by the USGS Sediment Trace Element Partitioning Laboratory in Atlanta, Georgia. Sediment was sieved to less than 63 μm (to compensate for potential grain-size differences) and analyzed for nutrients and trace elements using methods described in Horowitz and others (2001).

Quality Control

One duplicate sample was analyzed for nutrient and trace element data. Relative percentage differences between original and duplicate analyses were generally within 10 percent,

with the exception of cadmium (40 percent), selenium (31 percent), and tin (13 percent). Concentrations of these analytes were near laboratory reporting levels, thus small differences in concentration resulted in large percentage differences between original and duplicate analyses. Uncertainty estimates for radionuclide analyses are based on activity level and instrument calibration error. These estimates ranged from 0.01 to 0.07 picocuries/gram for cesium-137 and from 0.12 to 0.47 for “excess” lead-210.

Age and Accumulation Rates of Lake-Bottom Sediment

Environmental activities of the radionuclides natural beryllium-7 (^7Be), anthropogenic cesium-137 (^{137}Cs), and lead-210 (^{210}Pb), were measured in the sediment cores to date the ages of lake-bottom sediment (tables 1 and 2). These radionuclides were found entrained on bottom sediment through atmospheric fallout to the lake surface and surrounding watershed,

4 Bottom-Sediment Accumulation and Quality in Shawnee Mission Lake, Johnson County, Kansas, 2006

and subsequent deposition to the lake bottom. After deposition, radionuclides decayed at varying rates depending on their respective half-lives (53.3 days for ^7Be , 30.3 years for ^{137}Cs , and 22.3 years for ^{210}Pb) (Holmes, 1998).

^7Be is produced in the upper atmosphere by cosmic ray interaction with nitrogen. Because of its short half-life, detection in lake-bottom sediment indicates recent sediment accumulation and mixing of sediment. ^{137}Cs was artificially produced as a byproduct of nuclear fission; global release to the environment occurred from above-ground nuclear weapons testing. Measurable fallout of ^{137}Cs began in 1952. Maximum fallout deposition occurred in 1963–64; then decreased steadily due to the nuclear test ban treaty of 1963 (Ritchie and McHenry, 1990). ^{210}Pb is a naturally occurring isotope in the uranium-238 decay series. When compared to the activity of its long-lived parent, ^{226}Ra , levels of “excess” ^{210}Pb in lake-bottom sediment can be used to age date core-sediment profiles.

The constant flux:constant sedimentation method (Appleby and Oldfield, 1992) was used to age date sediment intervals from “excess” ^{210}Pb profiles. The ^{137}Cs profile then was used as a test of the “excess” ^{210}Pb -derived sediment accumulation rate and as an indicator of sediment mixing or reworking (Fuller and others, 1999). Precipitation data

recorded at Olathe, Kansas, generally indicate even distribution of precipitation amount and intensity since 1962 (fig. 3).

^7Be was not detected in either sediment core because sediment with detectable activity was diluted by previously deposited sediment in which ^7Be activity had decayed to less than laboratory reporting levels (tables 1 and 2). ^{137}Cs activity had well-defined peak values in both cores followed by an exponential decrease in activity (fig. 4), indicating that sediment profiles in the cores were undisturbed by mixing (Van Metre and others, 1997). Excess ^{210}Pb data had a two-slope exponential decrease in core 1 (1 in/yr from 1964–1970; 0.19 in/yr from 1970–2006) and a more uniform exponential decrease in core 2 (fig. 4). Anomalies in constant decay rate in the 7- and 9-in. depth intervals (fig. 4B) of core 2 may have been caused by shoreline erosion, road construction at the inception of the park, or by soils disturbed during construction of the reservoir. Data below a depth of about 15 in. in core 1, and below 11 in. in core 2, had little excess ^{210}Pb activity and represent original, pre-impoundment soils (tables 1 and 2).

Sediment accumulation rates were estimated at 0.31 in/yr in core 1 and 0.26 in/yr in core 2 for 1964–2006. Mass accumulation rates for core 2 of 0.07 lbs per square ft were calculated with excess ^{210}Pb and bulk density using the CF:CS method (Appleby and Oldfield, 1992). These rates

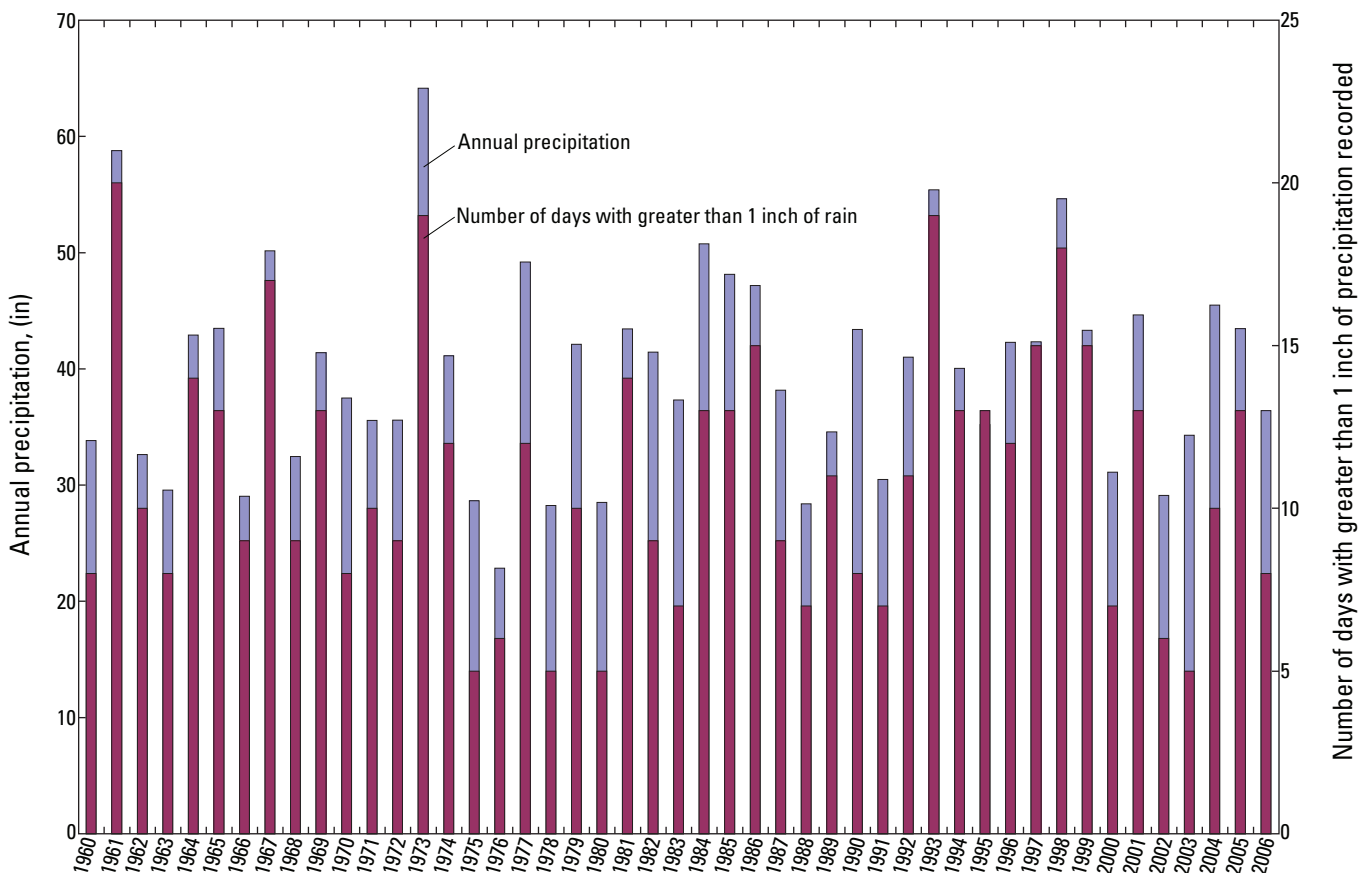


Figure 3. Annual precipitation and number of days in which greater than 1 inch of rainfall, Olathe, Kansas, 1960–2006 (Data from National Oceanic and Atmospheric Administration, 2007).

Table 1. Activities and concentrations of radionuclides, nutrients, and trace elements in core 1, Shawnee Mission Lake bottom sediment, May 2006.

[<LRL, less than laboratory reporting level; mg/kg, milligrams per kilogram; dpm/g, disintegrations per minute per gram; n, number of samples collected; in, inches; --, not determined]

| Constituent | Laboratory reporting level | Probable effect concentration ¹ | Concentration at specified depth intervals (inches) | | | | | |
|----------------------------|----------------------------|--|---|--------|--------|--------|--------|--------|
| | | | 0–2 | 2–4 | 4–6 | 6–8 | 8–10 | 10–12 |
| Radionuclides | | | | | | | | |
| ⁷ Beryllium | 0.04 dpm/g | -- | <LRL | <LRL | <LRL | <LRL | <LRL | <LRL |
| ¹³⁷ Cesium | 0.07 dpm/g | -- | 0.29 | 0.42 | 0.55 | 0.51 | 1.1 | 1.7 |
| “Excess” ²¹⁰ Pb | 0.07 dpm/g | -- | 2.4 | 2.2 | 1.8 | 1.4 | 1.5 | 1.4 |
| Nutrients | | | | | | | | |
| Nitrogen | 100 mg/kg | -- | 3,600 | 3,400 | 6,900 | 3,000 | 3,800 | 3,600 |
| Phosphorus | 100 mg/kg | -- | 1,100 | 1,000 | 1,000 | 1,000 | 1,300 | 1,300 |
| Trace elements | | | | | | | | |
| Aluminum | 1 mg/kg | -- | 9.0 | 8.8 | 8.5 | 8.6 | 8.2 | 8.0 |
| Antimony | .1 mg/kg | -- | 1.4 | 1.4 | 1.3 | 1.3 | 1.3 | 1.4 |
| Arsenic | .1 mg/kg | 33 | 20 | 24 | 21 | 19 | 21 | 20 |
| Barium | 1 mg/kg | -- | 760 | 750 | 750 | 760 | 700 | 750 |
| Beryllium | .1 mg/kg | -- | 2.6 | 2.6 | 2.4 | 2.4 | 2.3 | 2.3 |
| Cadmium | .1 mg/kg | 5.0 | .6 | .7 | .6 | .5 | .6 | .8 |
| Chromium | 1 mg/kg | 111 | 110 | 99 | 90 | 89 | 86 | 84 |
| Cobalt | 1 mg/kg | -- | 15 | 16 | 15 | 13 | 12 | 15 |
| Copper | 1 mg/kg | 149 | 32 | 32 | 31 | 31 | 30 | 30 |
| Iron | 1,000 mg/kg | -- | 46,000 | 47,000 | 46,000 | 43,000 | 42,000 | 42,000 |
| Lead | 1 mg/kg | 128 | 33 | 31 | 29 | 33 | 38 | 35 |
| Lithium | 1 mg/kg | -- | 59 | 58 | 53 | 52 | 50 | 50 |
| Manganese | 10 mg/kg | -- | 1,200 | 1,200 | 1,500 | 1,100 | 1,200 | 1,200 |
| Molybdenum | 1 mg/kg | -- | 1.6 | 1.8 | 1.3 | 1.4 | 1.5 | 1.7 |
| Nickel | 1 mg/kg | 49 | 49 | 47 | 43 | 41 | 39 | 41 |
| Selenium | .1 mg/kg | -- | 1.2 | 1.4 | 1.1 | 1.3 | 1.3 | 1.3 |
| Silver | .5 mg/kg | -- | <LRL | <LRL | <LRL | <LRL | <LRL | <LRL |
| Strontium | 1 mg/kg | -- | 140 | 140 | 140 | 120 | 140 | 160 |
| Sulfur | 1,000 mg/kg | -- | 4,000 | 5,600 | 5,600 | 3,300 | 4,600 | 5,300 |
| Thallium | 50 mg/kg | -- | <LRL | <LRL | <LRL | <LRL | <LRL | <LRL |
| Tin | .1 mg/kg | -- | 2.3 | 3.8 | 3.8 | 3.2 | 2.6 | 4.2 |
| Titanium | 50 mg/kg | -- | 4,200 | 4,200 | 4,000 | 4,000 | 3,800 | 4,000 |
| Total carbon | 1,000 mg/kg | -- | 32,000 | 31,000 | 68,000 | 30,000 | 40,000 | 38,000 |
| Total organic carbon | 1,000 mg/kg | -- | 28,000 | 29,000 | 28,000 | 26,000 | 31,000 | 29,000 |
| Uranium | .05 mg/kg | -- | <LRL | <LRL | <LRL | <LRL | <LRL | <LRL |
| Vanadium | 1 mg/kg | -- | 140 | 130 | 130 | 130 | 120 | 120 |
| Zinc | 1 mg/kg | 459 | 170 | 170 | 150 | 150 | 140 | 130 |

6 Bottom-Sediment Accumulation and Quality in Shawnee Mission Lake, Johnson County, Kansas, 2006

Table 1. Activities and concentrations of radionuclides, nutrients, and trace elements in core 1, Shawnee Mission Lake bottom sediment, May 2006.—Continued

[<LRL, less than laboratory reporting level; dpm/g, disintegrations per minute per gram; mg/kg, milligrams per kilogram; n, number of samples collected; in, inches; --, not determined]

| Constituent | Laboratory reporting level | Probable effect concentration ¹ | Concentration at specified depth intervals (inches) | | | |
|----------------------------|----------------------------|--|---|--------|--------|---------|
| | | | 12–14 | 14–16 | 16–18 | 18–20.5 |
| Radionuclides | | | | | | |
| ⁷ Beryllium | 0.04 dpm/g | -- | <LRL | <LRL | <LRL | <LRL |
| ¹³⁷ Cesium | 0.07 dpm/g | -- | 5.5 | 0.41 | 0.37 | 0.37 |
| “Excess” ²¹⁰ Pb | 0.07 dpm/g | -- | 1.3 | .34 | -.13 | .20 |
| Nutrients | | | | | | |
| Nitrogen | 100 mg/kg | -- | 3,000 | 1,200 | 870 | 1,000 |
| Phosphorus | 100 mg/kg | -- | 1,200 | 810 | 630 | 530 |
| Trace elements | | | | | | |
| Aluminum | 1 mg/kg | -- | 9.1 | 8.4 | 7.2 | 6.1 |
| Antimony | .1 mg/kg | -- | 1.4 | 1.2 | 1.0 | .9 |
| Arsenic | .1 mg/kg | 33 | 18 | 9.7 | 9.1 | 7.7 |
| Barium | 1 mg/kg | -- | 790 | 760 | 740 | 720 |
| Beryllium | .1 mg/kg | -- | 2.7 | 2.5 | 2.1 | 1.7 |
| Cadmium | .1 mg/kg | 5.0 | .8 | .6 | .3 | .2 |
| Chromium | 1 mg/kg | 111 | 95 | 87 | 72 | 59 |
| Cobalt | 1 mg/kg | -- | 15 | 13 | 11 | 9 |
| Copper | 1 mg/kg | 149 | 38 | 27 | 23 | 18 |
| Iron | 1,000 mg/kg | -- | 46,000 | 39,000 | 33,000 | 26,000 |
| Lead | 1 mg/kg | 128 | 34 | 24 | 22 | 18 |
| Lithium | 1 mg/kg | -- | 55 | 46 | 39 | 31 |
| Manganese | 10 mg/kg | -- | 1,200 | 770 | 660 | 550 |
| Molybdenum | 1 mg/kg | -- | 1.5 | <LRL | 0.8 | <LRL |
| Nickel | 1 mg/kg | 49 | 45 | 38 | 31 | 24 |
| Selenium | .1 mg/kg | -- | 1.2 | .6 | .6 | .5 |
| Silver | .5 mg/kg | -- | <LRL | <LRL | .8 | <LRL |
| Strontium | 1 mg/kg | -- | 120 | 120 | 110 | 120 |
| Sulfur | 1,000 mg/kg | -- | 2,900 | 440 | 250 | 210 |
| Thallium | 50 mg/kg | -- | <LRL | <LRL | <LRL | <LRL |
| Tin | .1 mg/kg | -- | 2.8 | 2.5 | 1.8 | 2.8 |
| Titanium | 50 mg/kg | -- | 4,300 | 4,300 | 4,200 | 4,100 |
| Total carbon | 1,000 mg/kg | -- | 30,000 | 11,000 | 8,000 | 8,000 |
| Total organic carbon | 1,000 mg/kg | -- | 26,000 | 10,000 | 8,000 | 7,000 |
| Uranium | .05 mg/kg | -- | <LRL | <LRL | <LRL | <LRL |
| Vanadium | 1 mg/kg | -- | 140 | 120 | 100 | 84 |
| Zinc | 1 mg/kg | 459 | 150 | 120 | 93 | 72 |

¹From MacDonald and others (2000).

Table 2. Activities of radionuclides in core 2, Shawnee Mission Lake bottom sediment, Johnson County, Kansas, November 2006.

[lb/ft³, pound per cubic foot; <LRL, less than laboratory reporting level; dpm/g, disintegrations per minute per gram; in, inches]

| Constituent | Unit of measurement | Bulk density or concentrations at specified depth interval (inches) | | | | | | | | | | | | |
|----------------------------|---------------------|---|------|------|------|------|------|------|------|------|------|-------|-------|-------|
| | | 0-1 | 1-2 | 2-3 | 3-4 | 4-5 | 5-6 | 6-7 | 7-8 | 8-9 | 9-10 | 10-11 | 11-12 | 12-13 |
| | | Bulk density (lb/ft ³) | | | | | | | | | | | | |
| Bulk Density | lb/ft ³ | 8.52 | 18.5 | 15.6 | 14.3 | 17.1 | 19.7 | 15.8 | 17.6 | 16.2 | 18.3 | 24.4 | 48.9 | 47.5 |
| | | Radionuclides | | | | | | | | | | | | |
| ⁷ Beryllium | 0.04 dpm/g | <LRL | <LRL | <LRL | <LRL | <LRL | <LRL | <LRL | <LRL | <LRL | <LRL | <LRL | <LRL | <LRL |
| ¹³⁷ Cesium | 0.07 dpm/g | .25 | .26 | .41 | .50 | .46 | .69 | 1.1 | 1.1 | 1.3 | 1.5 | 3.2 | .94 | .29 |
| “Excess” ²¹⁰ Pb | 0.07 dpm/g | 8.1 | 6.9 | 6.8 | 5.6 | 5.0 | 4.7 | 4.3 | 2.1 | 3.2 | 3.7 | 2.4 | .32 | .74 |

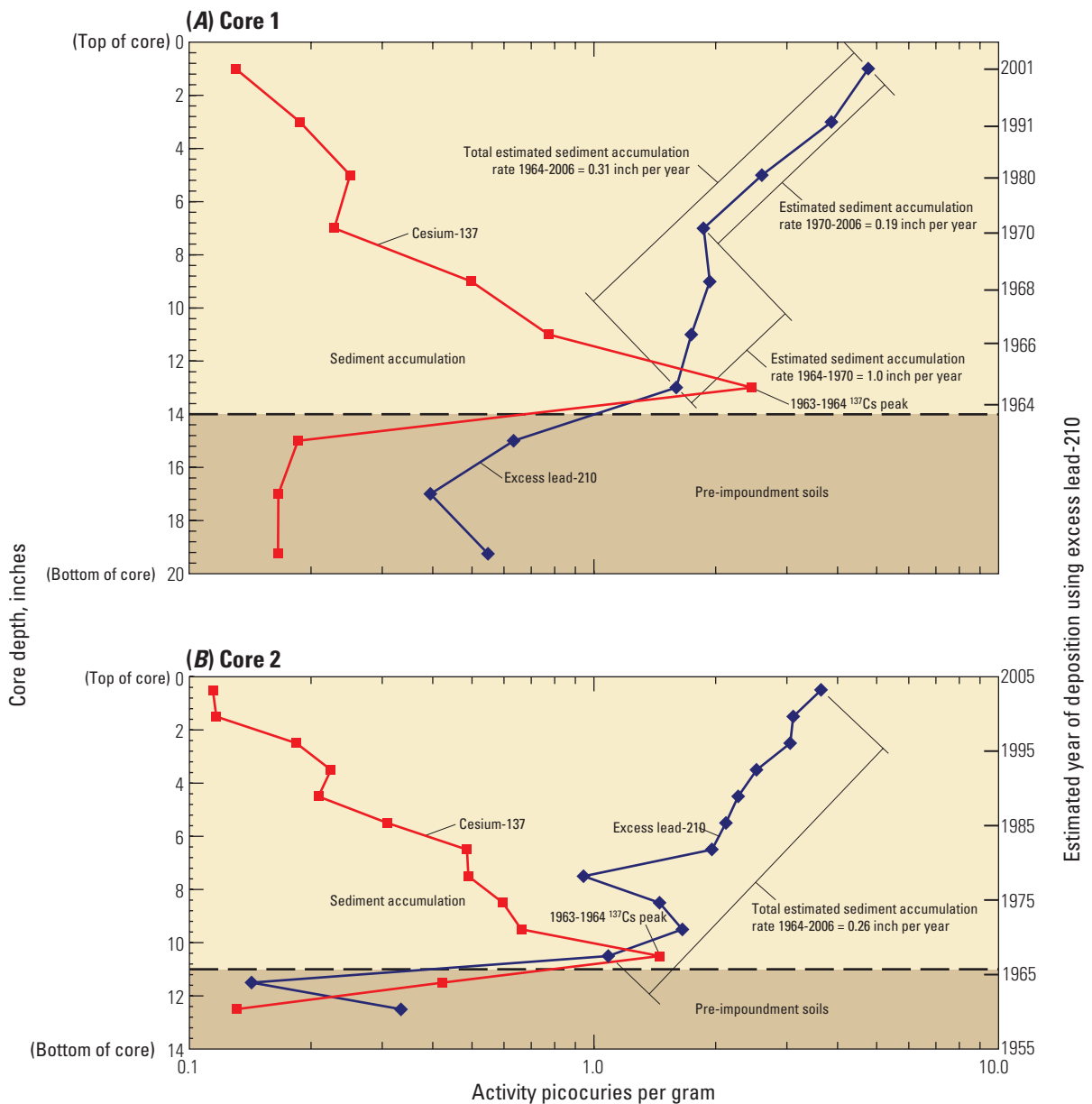


Figure 4. Cesium-137 and excess lead-210 activity in relation to core depth and estimated year of deposition in Shawnee Mission Lake bottom sediment.

were used to assign average dates of deposition for each vertical core depth interval. The resulting dates agree well with the known 1963-64 peak in ^{137}Cs fallout delivery (fig. 4).

Core 1 indicated accelerated deposition from 1964–70 (approximately 1 in/year), with substantially less deposition from 1970–2006 (approximately 0.19 in/yr; fig. 4A). Increased erosion rates during early stages of the park may be related to soil disturbance during construction of the park and lake and (or) potential effects from core shortening. However, sediment accumulation rates calculated from the core 2 generally were constant during the past 45 years (0.26 in/yr; fig. 4B). Deposition rates calculated from sediment-coring methods did not indicate increased sediment loading associated with recent residential construction in the watershed. Erosion-control measures such as stormwater detention basins or protection of riparian areas enacted during residential construction may have minimized transport of sediment into area streams. Additionally, sediment loading from residential construction may have been deposited in the upstream end of the lake, remained in suspension long enough to pass through the impoundment outflow, or was underrepresented due to core shortening during sample collection.

Differences in deposition rates between the two cores collected for this study are likely related to differences in the length of sediment penetrated in each core sample. These differences are caused by localized variation in either sediment deposition or in the amount of “core shortening” between samples.

Nutrient and Trace Element Concentrations

Nutrient and trace element concentrations in lake-bottom sediment were used to characterize current (2006) and historical sediment quality in Shawnee Mission Lake and the surrounding watershed (table 1). Selected nutrient and trace element data were compared to data collected from two other Johnson County lakes of similar size and age—Gardner City Lake (impounded in 1940; Juracek, 2004), and Lake Olathe (impounded in 1956; Mau, 2000) (fig. 4). Constituents compared between Johnson County lakes have either previously been used to age-date sediment or have been observed to increase in urbanized watersheds were chosen for analysis (Van Metre and others 2004; Mahler and others, 2006). Trace element concentrations were compared to probable effect concentrations (PECs), which are concentrations above which a particular constituent shows a statistical relation to adverse biological effects (MacDonald and others, 2000). These guidelines are used exclusively for comparative purposes and do not imply direct cause-effect relations between sediment concentrations and adverse biological effects.

Nutrient and trace element concentrations in Shawnee Mission Lake bottom sediment generally were within the range of the other area lakes and were less than respective PEC values. Shawnee Mission Lake also had slightly larger particulate total nitrogen concentrations than the other two area lakes, including a large spike in values (6,900 mg/kg) in the core interval between 4 and 6 in.; the cause of this spike is unknown as there was no evidence of pronounced changes in land use during this period. Nickel was the only constituent with values equal to (or larger than) the PEC (49 mg/kg). Although concentrations of nutrients and trace elements in Shawnee Mission Lake sediment generally were within the range of the other two area lakes, selected trace elements had increasing concentrations in more recent sediment from Shawnee Mission Lake (fig. 5). Among the three lakes, increases in chromium, lead, nickel, and zinc in more recent (1990–present) deposition were exclusive to Shawnee Mission Lake and likely are indicative of localized urbanization (table 1, fig. 5). Atmospheric deposition (for chromium, lead, nickel, and zinc), roof shingles (particularly for lead and zinc) and tire wear (zinc) have been shown to be important sources of contamination in urban environments (Van Metre and Mahler, 2003; Mahler and others, 2006). Major human-related sources of nickel include industrial and indirect emission of nickel as an impurity in coal and oil combustion (U.S. Environmental Protection Agency, 1984).

Summary

The U.S. Geological Survey, in cooperation with the Johnson County Stormwater Management Program, undertook a study to characterize sediment accumulation and quality in Shawnee Mission Lake. Two bottom-sediment cores were collected from Shawnee Mission Lake to characterize sediment accumulation and quality relative to ongoing urbanization in the upstream watershed. Both cores had similar average sediment accumulation rates (core 1, 0.31 in/yr; core 2, 0.26 in/yr), and neither core indicated increased sediment deposition associated with recent urban development in the watershed. However sediment accumulation estimates could be affected by uneven distribution of sediment deposition across the reservoir or by shortening of the sediment core during sampling. Recent urban development (1990 to present) in the Shawnee Mission Lake watershed is likely associated with increasing concentrations of chromium, lead, nickel, and zinc in recently deposited bottom sediment. Information on the rates and quality of sediment accumulation can be used by Johnson County officials to help determine the current and future recreational capacity of the lake.

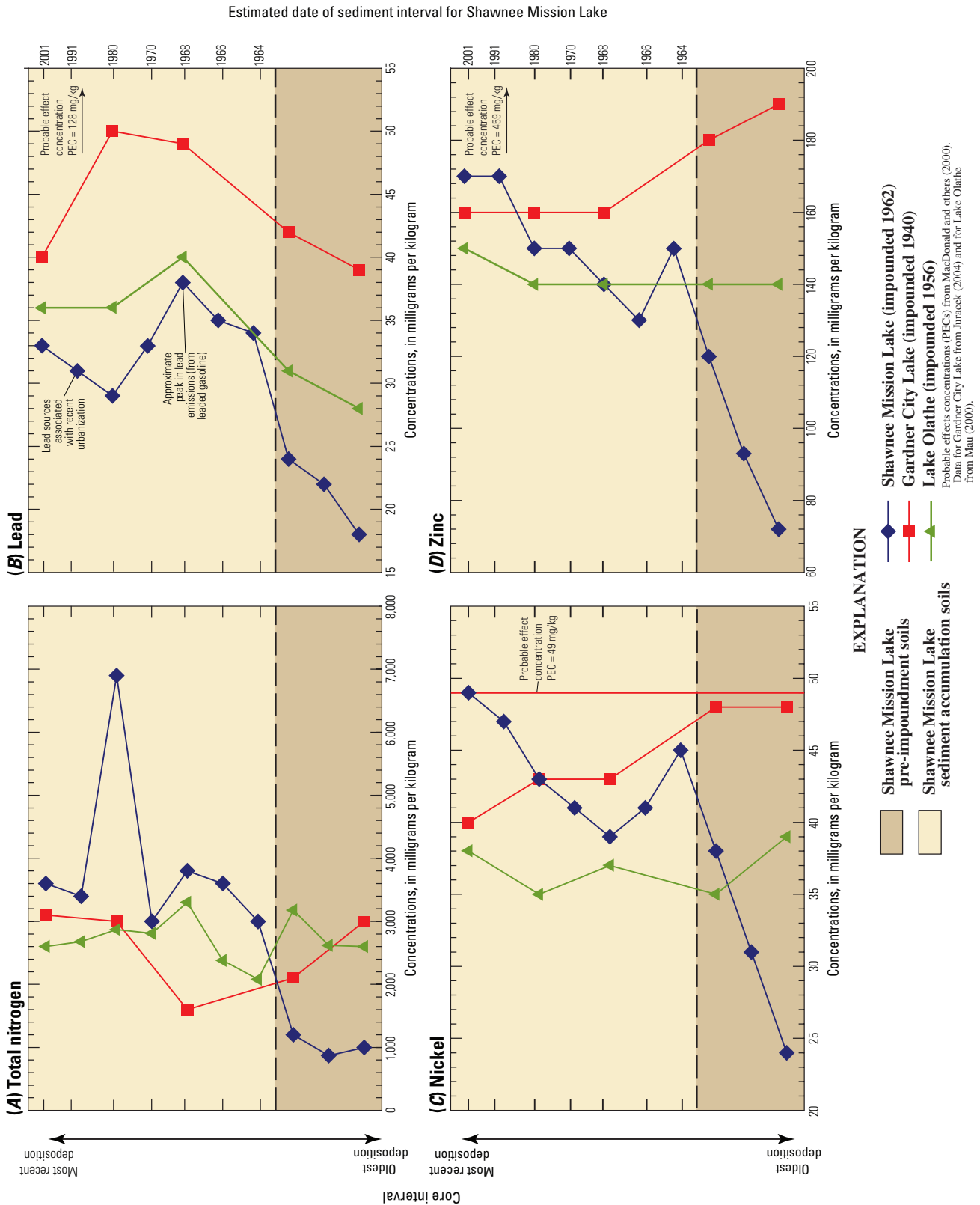


Figure 5. Selected nutrient and trace element profiles in bottom-sediment cores from three Johnson County lakes. Probable effects concentrations (PECs) from MacDonald and others (2000). Data for Gardner City Lake from Juracek (2004) and for Lake Olathe from Mau (2000).

References Cited

- Appleby, P.G., and Oldfield, F., 1992, Application of lead-210 to sedimentation studies, *in* Ivanovich, M., and Harmon, S., eds., Uranium-series disequilibrium—applications to earth, marine, and environmental sciences (2d ed.): Oxford, Clarendon Press, p. 731–778.
- Barnes, Elizabeth, 1956, Construction on new park underway: Johnson County Herald, specific date unknown.
- Fuller, C.C., VanGeen, A., Baskaran, M., and Anima, R., 1999, Sediment chronology in San Francisco Bay, California, defined by ^{210}Pb , ^{234}Th , ^{137}Cs , and $^{239,240}\text{Pu}$: *Journal of Marine Chemistry*, v. 64, p. 7–27.
- Guy, H.P., 1969, Laboratory theory and methods for sediment analysis: U.S. Geological Survey Techniques of Water-Resources Investigations, book 5, chap. C1, 58 p.
- Holmes, C.W., 1998, Short-lived isotopic chronometers—a means of measuring decadal sedimentary dynamics: U.S. Geological Survey Fact Sheet 073–98, 2 p.
- Horowitz, A.J., Elrick, K.A., and Smith, J.J., 2001, Estimating suspended sediment and trace element fluxes in large river basins—methodological considerations as applied to the NASQAN programme: *Hydrological Processes*, v. 15, no. 7, p. 1169–1208.
- Juracek, K.E., 2004, Sedimentation and occurrence and trends of selected chemical constituents in bottom sediment of 10 small reservoirs, eastern Kansas: U.S. Geological Survey Scientific Investigations Report 2004–5228, 80 p.
- Leopold, L.B., Huppman, R., and Miller, A., 2005, Geomorphic effects of urbanization in forty-one years of observation: *Proceedings of the American Philosophical Society*, v. 149, no. 3, p. 349–371.
- MacDonald, D.D., Ingersoll, C.G., and Berger, T.A., 2000, Development and evaluation of consensus-based quality guidelines for freshwater ecosystems: *Archives of Environmental Contamination Toxicology*, v. 39, p. 20–31.
- Mahler, B.J., Van Metre, P.C., and Callender, E., 2006, Trends in metals in urban and reference lake sediments across the United States, 1970 to 2001: *Environmental Toxicology and Chemistry*, v. 25, no. 7, p. 1698–1709.
- Mau, D.P., 2000, Sediment deposition and selected water-quality characteristics in Cedar Lake and Lake Olathe, northeast Kansas, 2000: U.S. Geological Survey Water-Resources Investigations Report 02–4073, 71 p.
- Morris, G.L., Fan, J., 1997, *Reservoir Sedimentation Handbook*: New York, McGraw-Hill, 848 p.
- National Oceanic and Atmospheric Administration, 2007, Climatological data summary for Olathe, Kansas, National Climatic Data Center: Information available on the web, accessed August 13, 2007 at <http://www.ncdc.noaa.gov/oa/climate/stationlocator.html>
- Ritchie, J.C., and McHenry, J.R., 1990, Application of radioactive fallout cesium-137 for measuring soil erosion and sediment accumulation rates and patterns: A review: *Journal of Environmental Quality*, v. 19, p. 215–233.
- Robbins, J.A., and Edgington, D.N., 1986, Determination of recent sedimentation rates in Lake Michigan using ^{210}Pb and ^{137}Cs : *Geochimica et Cosmochimica Acta* v. 39, p. 285–304.
- U.S. Environmental Protection Agency, 1984, Locating and estimating air emissions from sources of nickel: U.S. Environmental Protection Agency Report 450/4-84-007f, various pagination.
- Van Metre, P.C., Callender, E., and Fuller, C.C., 1997, Historical trends in organochlorine compounds in river basins identified using sediment cores from reservoirs: *Environmental Science and Technology*, v. 31, p. 2339–2344.
- Van Metre, P.C., and Mahler B.J., 2003, The contribution of particles washed from rooftops to contaminant loading to urban streams: *Chemosphere*, v. 52, p. 1721–1741.
- Van Metre, P.C., Wilson, J.T., Fuller, C.C., Callender, Edward, and Mahler, B.J., 2004, Collection, analysis, and age dating of sediment cores from 56 U.S. lakes and reservoirs sampled by the U.S. Geological Survey, 1992–2001: U.S. Geological Survey Scientific Investigations Report 2004–5184, 180 p.
- Wolman, M.G., 1967, A cycle of sedimentation and erosion in urban river channels: *Geografiska Annaler*, v. 49a, no. 2–4, p. 385–395.

Publishing support provided by:
Rolla Publishing Service Center

For more information concerning this publication, contact:
Director, USGS Kansas Water Science Center
4821 Quail Crest Place
Lawrence, KS 66049
(785) 842-9909

Or visit the Kansas Water Science Center Web site at:
<http://ks.water.usgs.gov>

