



Pacific Islands Ecology & Environment

Lawrence T. Yamamoto

Director of the Pacific Islands & Hawaii State Conservationist



Our Service Covers:

- Commonwealth of the Northern Mariana Islands (USA)
- Federated States of Micronesia
- Republic of Palau
- State of Hawaii (USA)
- Territory of American Samoa (USA)
- Territory of Guam (USA)



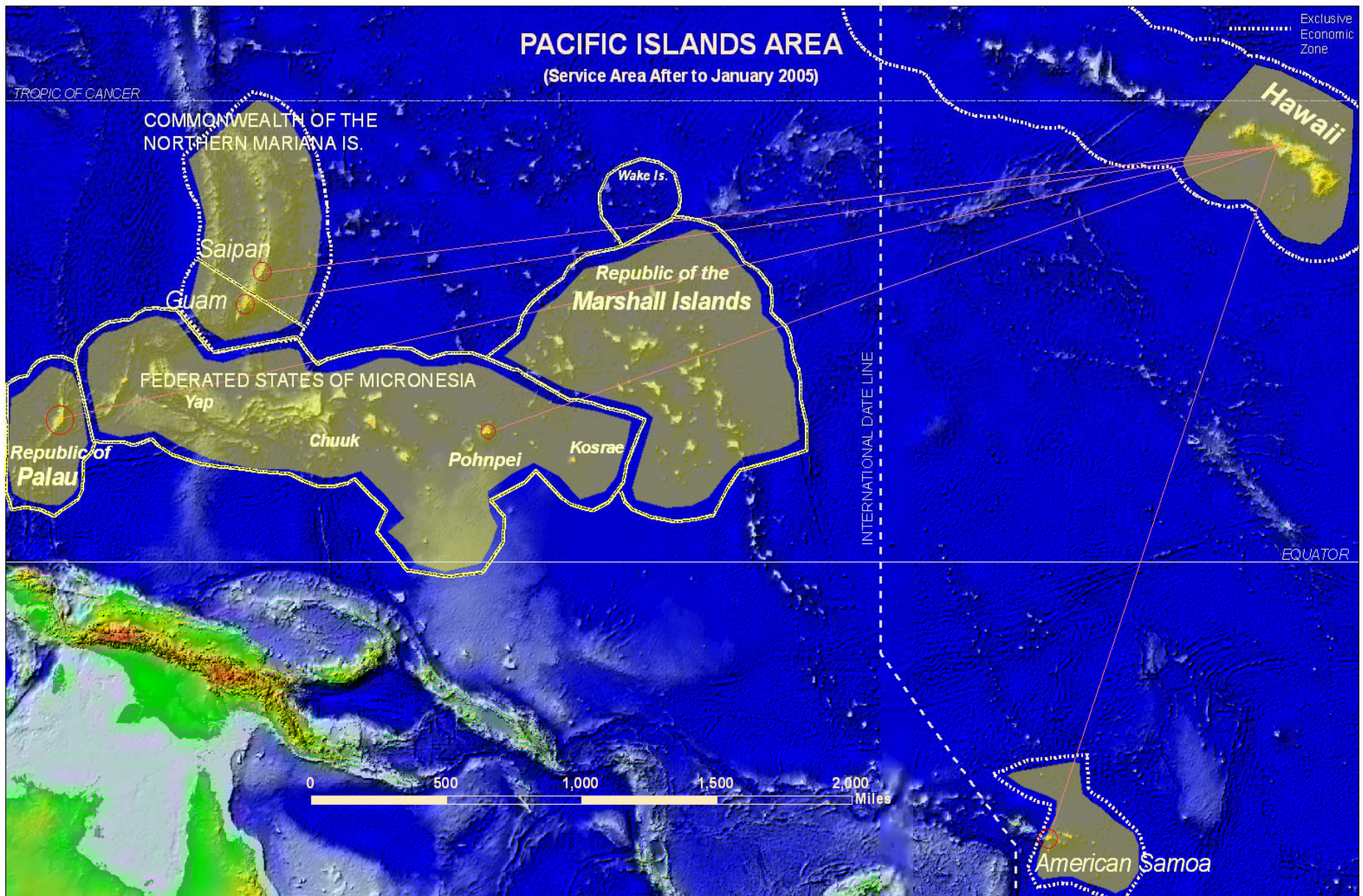
Our Vision:

“Our People...
Our Islands...
In Harmony”



PACIFIC ISLANDS AREA

(Service Area After to January 2005)

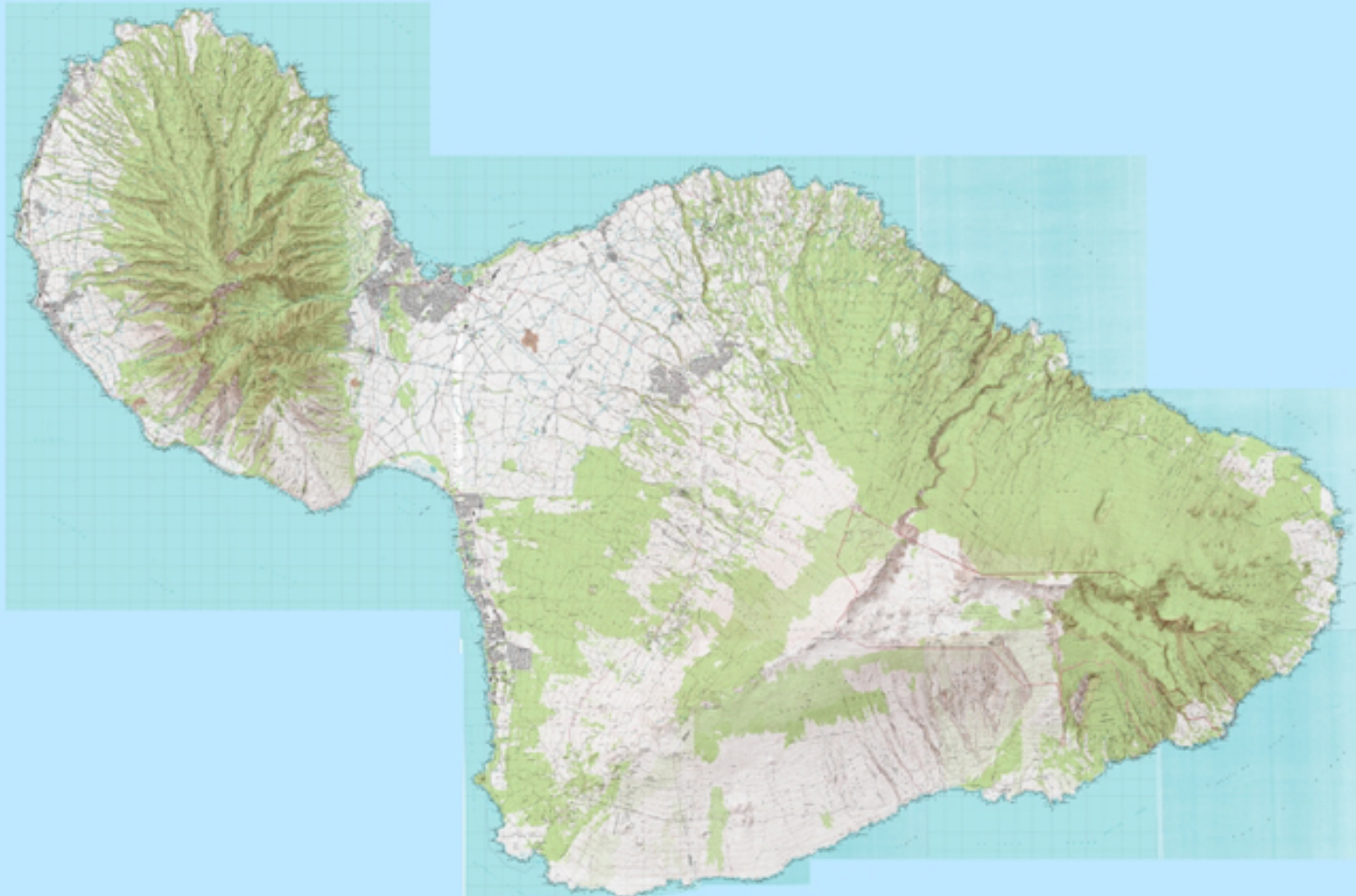


Micronesia vs. Polynesia

- Agroforestry systems
- Weathered soils



Maui



Hawaii Ecology & Environment

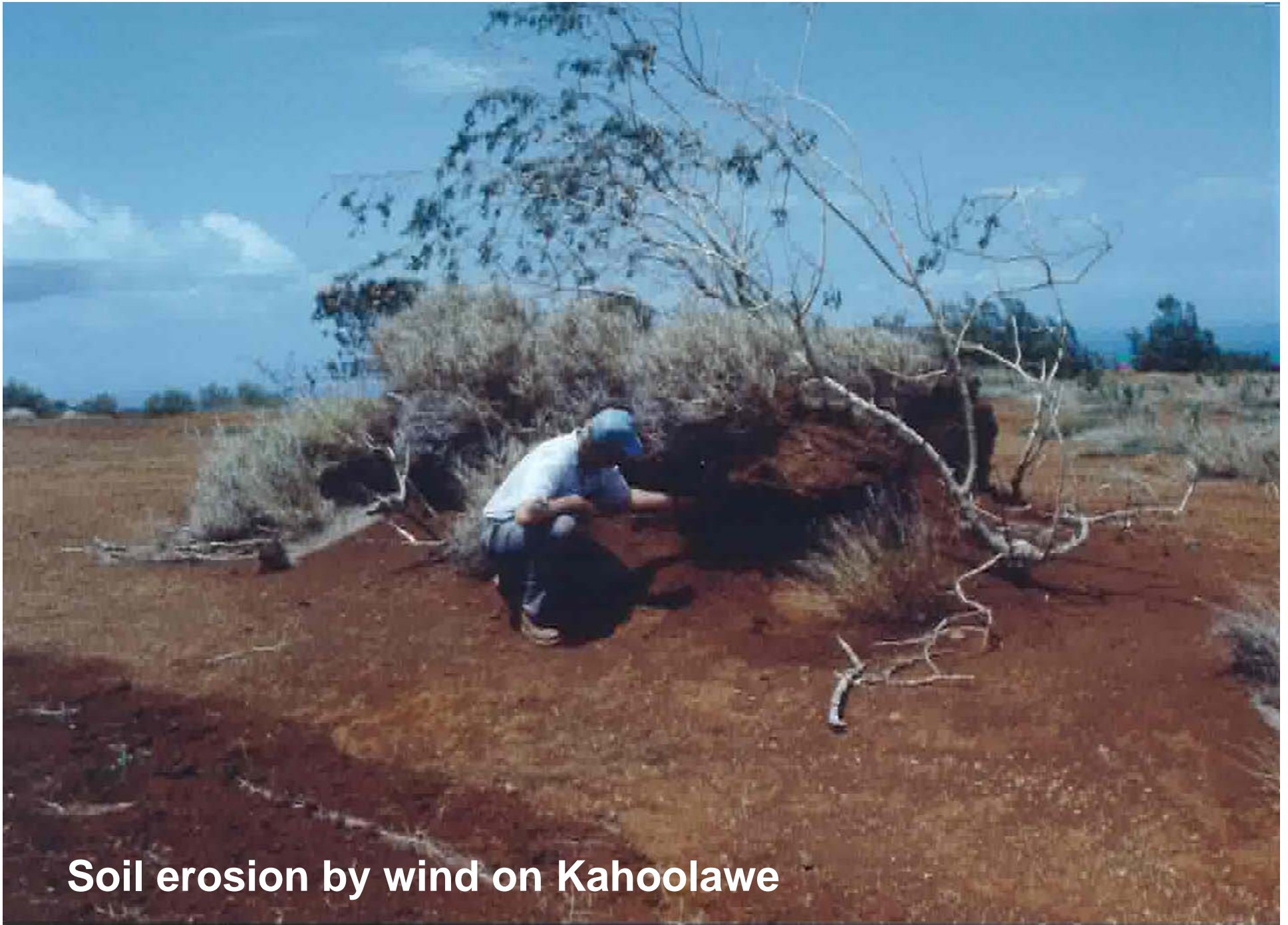
- 6,423.4 square miles of land area
- Eight major islands
- 124 small islands, reefs, and shoals
- Generated by volcanic eruptions
- Varies in elevation, rainfall, and temperatures



Maui Ecology & Environment

- Second largest island in the main chain
- 727.3 square miles of land area
- Highest elevation is 5,788 feet
- Largest perennial stream is 43 million gallons
(ʻIao Stream measures 163,000 cubic meters per day)
- Haleakala last erupted in 1790





Soil erosion by wind on Kahoolawe

Ahapua`a Concept

- Mountain
 - Rainforest
 - Trees for canoes & houses
- Valley
 - Farmland
 - Taro lo`i
- Shore
 - Fishponds
 - Salt & seaweed





Air Quality Issues of the Islands

- Animal waste
- Burning
- Dust



Animal Waste



Windbreaks around animal facilities are encouraged to address odor.

Burning



Educational Workshops in the community have been held on Maui through the Tri-Isle RC&D Council. They also produced a series of educational videos.

Dust



The Plant Materials Center in Hoolehua provides vegetative cover to Kahoolawe to help reduce erosion by wind and rain.



Motorists driving across the mud flats near Kealia Pond had to endure dense clouds of dust blowing off Central Maui fields on Wednesday afternoon. The dust storm was the result of strong trade winds funneled by Haleakala and the West Maui Mountains through the isthmus of Maui.

The Maui News / MATTHEW THAYER photo
September 23, 2004

at
ig

it
ident
erica
ny in
bom
at of
U.S.

nton
hite
con
y of
dest

Wall
ets,
tech
nol
in m
led
m."

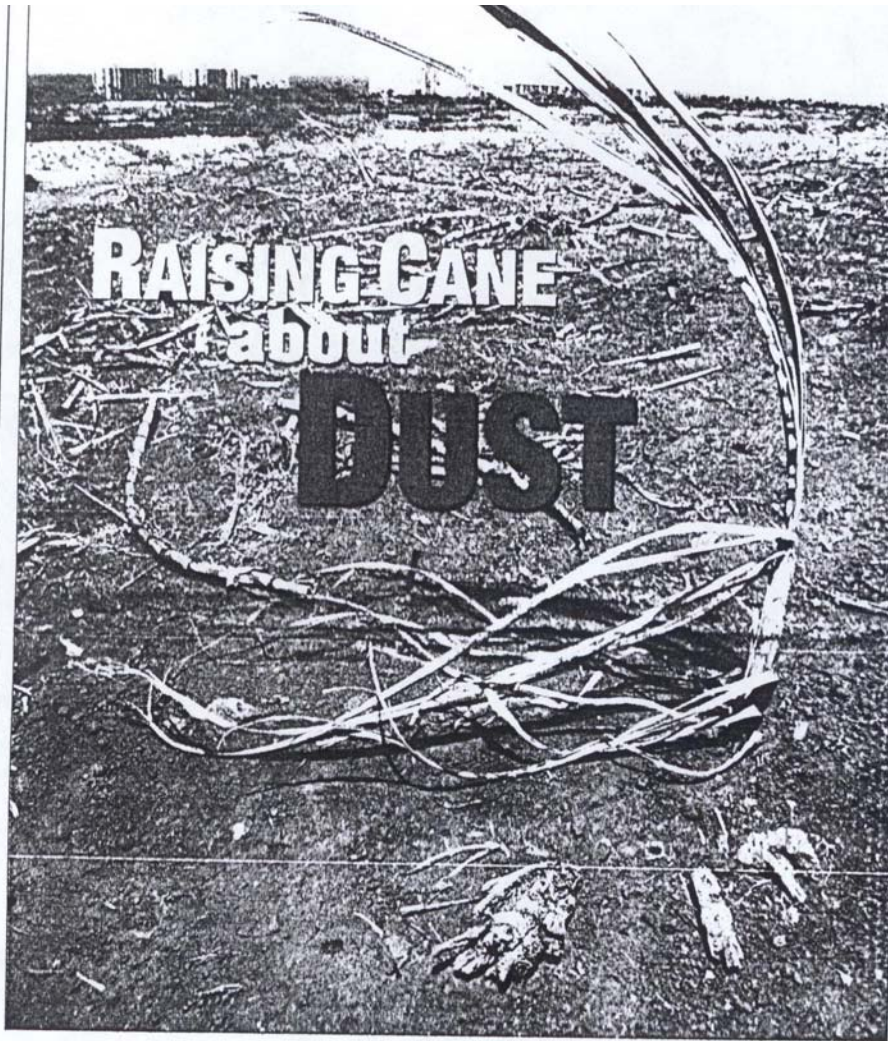
.lan
tra
no
nd

mic
ent
ker
st-
an
m-
ast

not
ed
ON
AS

—

ph



The Maui News / MATTHEW THAYER photo

Dry sprigs of sugar cane left in the fields above the Lahaina coastline do little to hold the soil when high winds sweep through. West Maui resort and residential areas were inundated with clouds of red dirt earlier this week when strong gusts blow over most of the island. The land was left barren after Pioneer Mill ceased sugar operations last year.

Kaanapali residents complain about swirling 'orange cloud' from abandoned fields; Amfac says it lacks resources to remedy problem

By VALERIE MONSON
Staff Writer

LAHAINA

Amfac has been planting some of its other land in alternative crops and just spent \$500,000 irrigating a section near Lanipoko that will be used for pasture. The state has been...

For More Information, contact:

Lawrence Yamamoto

**Hawaii State Conservationist and
Director for the Pacific Islands Area**

300 Ala Moana Blvd., #4-118

Honolulu, HI 96850

(808) 541-2600 ext. 107

Larry.Yamamoto@hi.usda.gov

www.hi.nrcs.usda.gov

