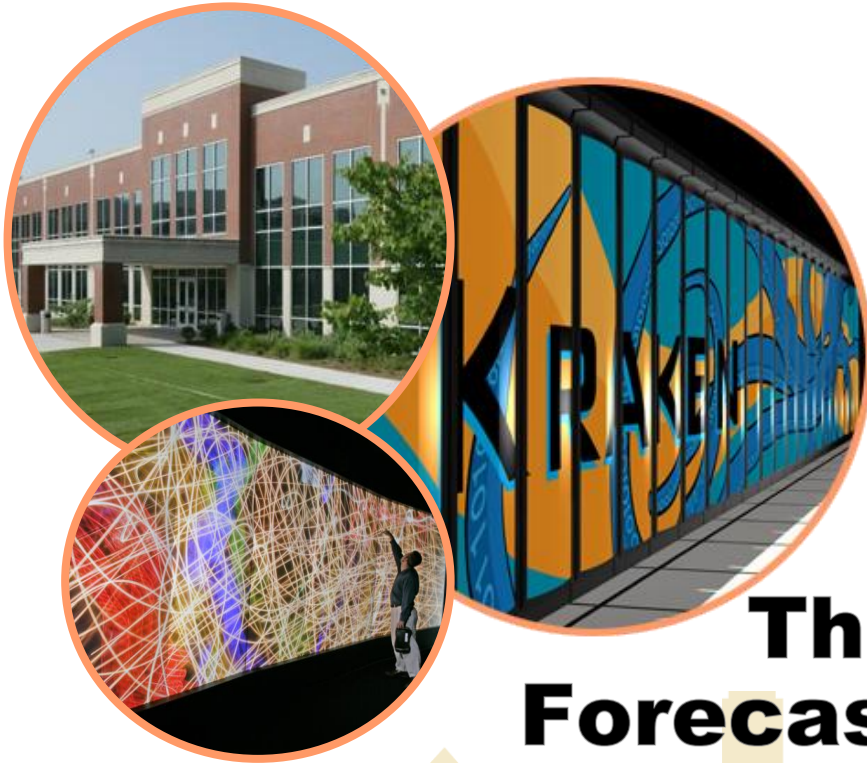


A /ORNL PARTNERSHIP  
NATIONAL INSTITUTE FOR COMPUTATIONAL SCIENCES

**NICS**



# The GlobalNet Project: Forecasting Human Society Through Petascale News Analysis

**Kalev Leetaru**

University of Illinois



NATIONAL INSTITUTE FOR COMPUTATIONAL SCIENCES



# The GlobalNet Project

- **Based at the University of Illinois, leverages the national unclassified academic supercomputing network to model global unrest**
- **Take all available unclassified data (OSINT): news (and ultimately books, magazines, twitter, blogs, youtube, stock data, etc), and builds a massive “earth simulation”**
- **Knowledge network capturing the entire planet: 10 billion actors and 100 trillion relationships 1979-present**



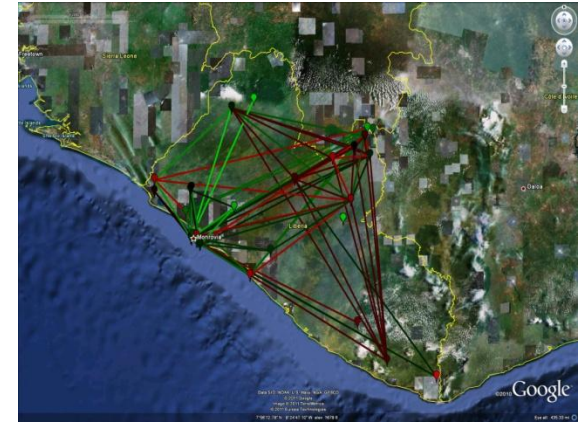
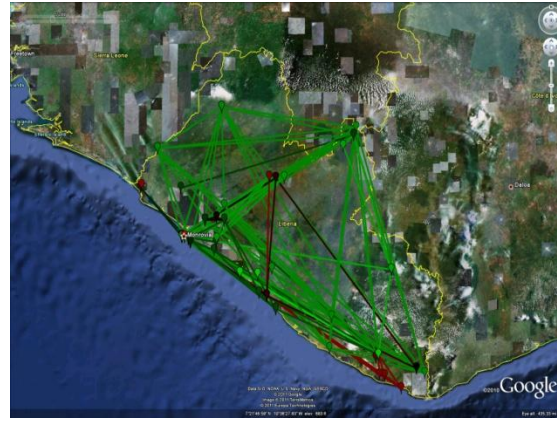
# Passively crowdsourcing unrest

- **GlobalNet “passively crowdsources” the global “mood” about each country/actor in realtime.**
- **Two identical attacks might have very different impacts (isolated factual reports vs widespread condemnation)**
- **Measure the “latent” unrest and represent as a geographic network structure**



# Visualize geographically

- Overlay onto Google Earth for interactive analysis

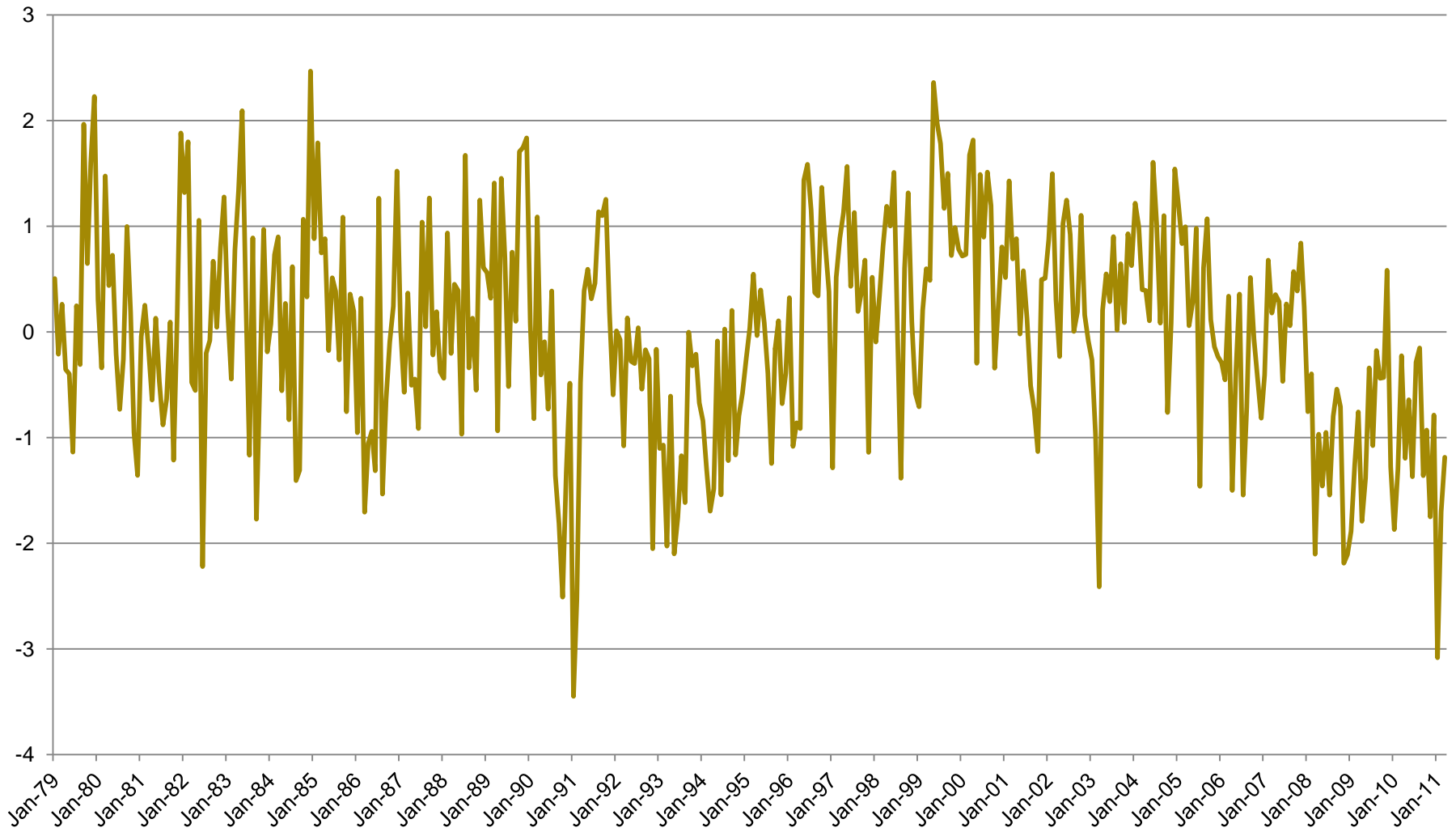


# Realtime country instability risk

- Visualize global “mood” about each country in realtime, offers significant insights into potential instability risk.

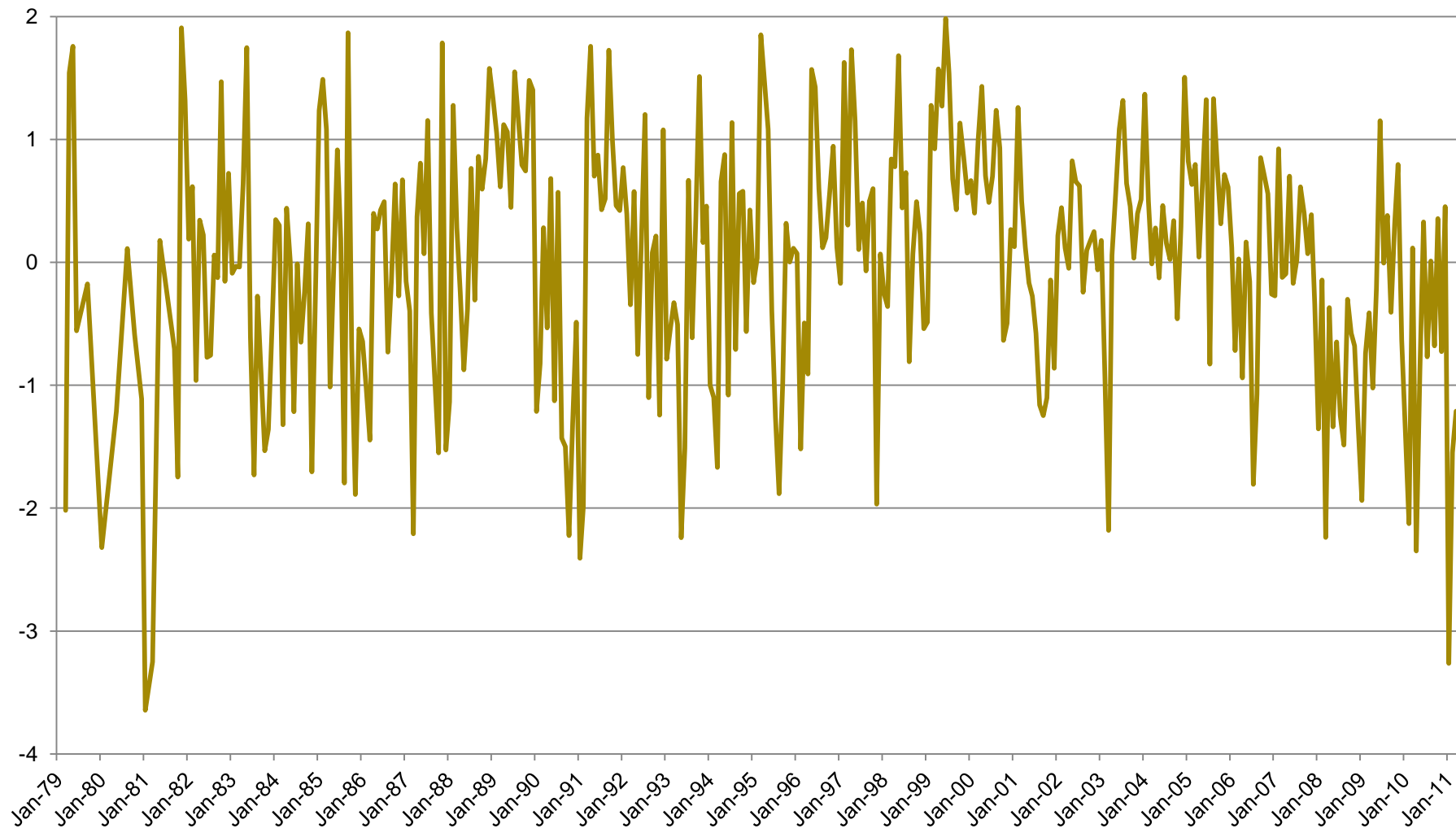


# Country stability: Egypt





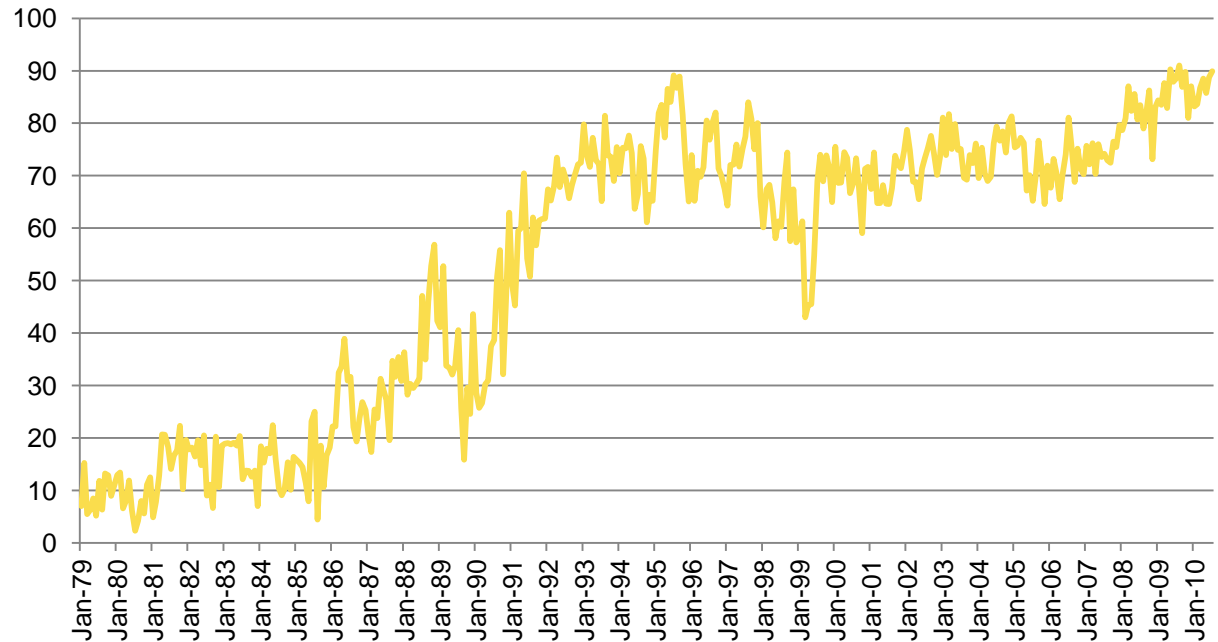
# Leader stability: Mubarak



# Contextualization of unrest

- **Ethnically-driven (Serbia)**
- **Democracy / individual freedoms (Egypt)**
- **Degree of state involvement (police / military)**

Serbia Ethnic Intensity:







**Contact**

**Kalev Leetrau**  
University of Illinois  
[leetaru@illinois.edu](mailto:leetaru@illinois.edu)



NATIONAL INSTITUTE FOR COMPUTATIONAL SCIENCES

