

MOUNTAIN-PLAINS INFORMATION OFFICE
Kansas City, Mo.

For release: Wednesday, August 15, 2012

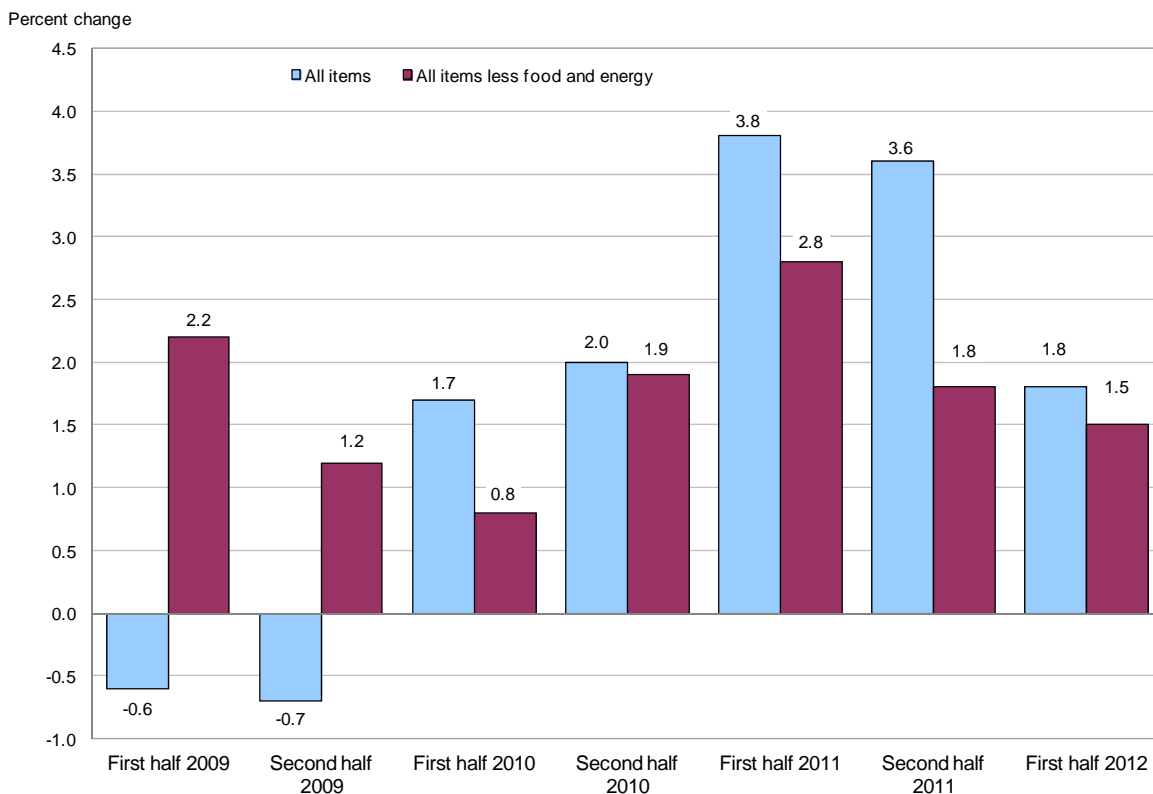
12-1698-KAN

Technical information : (816) 285-7000 • BLSInfoKansasCity@bls.gov • www.bls.gov/ro7
Media contact : (816) 285-7000 • BLSInfoKansasCity@bls.gov

CONSUMER PRICE INDEX (CPI) FOR DENVER-BOULDER-GREELEY
Prices increased 1.8 percent from the first half of 2011 to the first half of 2012

The Consumer Price Index for All Urban Consumers (CPI-U) for the Denver-Boulder-Greeley, Colo., metropolitan area increased 1.8 percent from the first half of 2011 to the first half of 2012, the U.S. Bureau of Labor Statistics reported today. Regional Commissioner Stanley W. Suchman noted that higher costs for shelter (2.1 percent) and food (3.9 percent) had the largest upward impact on the index. Energy costs rose 1.1 percent and the index for all items less food and energy was up 1.5 percent.

Chart 1. Over-the-year percent changes in consumer price indexes, Denver, first half 2009–first half 2012



SOURCE: U.S. Bureau of Labor Statistics

Food

Food prices were up 3.9 percent from the first half of 2011 to the first half of 2012. The rise was led by a 4.2-percent advance in prices for food at home. Also contributing to higher food costs, prices for food away from home rose 3.7 percent over the year.

Energy

The energy index, which includes motor fuel and household fuels, increased a modest 1.1 percent from the first half of 2011 to the first half of 2012. A 3.7-percent advance in motor fuel prices was responsible for the rise in the energy component. Within household energy, prices declined over the year for utility (piped) gas service (-5.4 percent) and electricity (-1.2 percent). Recent decreases in both of these indexes more than offset increases that occurred in the latter half of 2011.

All items less food and energy

The index for all items less food and energy rose 1.5 percent over the year. Among the components of the index that contributed to the increase were shelter (2.1 percent), medical care (4.9 percent), and education and communication (2.2 percent). In contrast, prices for apparel (-4.4 percent) and household furnishings and operations (-3.3 percent) were lower in the first half of 2012 than in the first half of 2011.

The Denver CPI-U stood at 222.960 for the first half of 2012. This means that a market basket of goods and services that cost \$100.00 during the 1982-84 base period cost \$222.96 during the first half of 2012. Because metropolitan area CPI data are not adjusted for seasonal price variation, consumers and businesses should be cautious in drawing conclusions about long-term retail price trends from short-term changes in the area indexes.

CPI-W

The Consumer Price Index for Urban Wage Earners and Clerical Workers (CPI-W) for the Denver-Boulder-Greeley, Colo., metropolitan area for the first half of 2012 was 213.588. The CPI-W increased 2.1 percent from the first half of 2011 to the first half of 2012.

Technical Note

The Consumer Price Index (CPI) is a measure of the average change in prices over time in a fixed market basket of goods and services. The Bureau of Labor Statistics publishes CPIs for two population groups: (1) a CPI for All Urban Consumers (CPI-U) which covers approximately 88 percent of the total population and (2) a CPI for Urban Wage Earners and Clerical Workers (CPI-W) which covers 29 percent of the total population. The CPI-U includes, in addition to wage earners and clerical workers, groups such as professional, managerial, and technical workers, the self-employed, short-term workers, the unemployed, and retirees and others not in the labor force.

The CPI is based on prices of food, clothing, shelter, and fuels, transportation fares, charges for doctors' and dentists' services, drugs, and the other goods and services that people buy for day-to-day living. Each month, prices are collected in 87 urban areas across the country from about 4,000 housing units and approximately 26,000 retail establishments--department stores, supermarkets, hospitals, filling stations, and other types of stores and service establishments. All taxes directly associated with the purchase and use of items are included in the index.

The index measures price changes from a designated reference date (1982-84) that equals 100.0. An increase of 16.5 percent, for example, is shown as 116.5. This change can also be expressed in dollars as follows: the price of a base period "market basket" of goods and services in the CPI has risen from \$10 in 1982-84 to \$11.65. For further details see the CPI home page on the Internet at www.bls.gov/cpi and the BLS Handbook of Methods, Chapter 17, The Consumer Price Index, available on the Internet at www.bls.gov/opub/hom/homch17_a.htm.

In calculating the index, price changes for the various items in each location are averaged together with weights that represent their importance in the spending of the appropriate population group. Local data are then combined to obtain a U.S. city average. Because the sample size of a local area is smaller, the local area index is subject to substantially more sampling and other measurement error than the national index. In addition, local indexes are not adjusted for seasonal influences. As a result, local area indexes show greater volatility than the national index, although their long-term trends are quite similar. **NOTE: Area indexes do not measure differences in the level of prices between areas; they only measure the average change in prices for each area since the base period.**

The Denver-Boulder-Greeley, Colo., Metropolitan Statistical Area includes Adams, Arapahoe, Boulder, Broomfield, Denver, Douglas, Jefferson, and Weld Counties in Colorado.

For personal assistance or further information on Consumer Price Indexes, as well as other Bureau products, contact the Mountain-Plains Information Office at (816) 285-7000 from 9:00 a.m. to 12:00 p.m. and 1:00 p.m. to 4:00 p.m. CT.

Information in this release will be made available to sensory impaired individuals upon request.
Voice phone: 202-691-5200; TDD message referral phone number (Federal Relay Service):
1-800-877-8339

Table 1. Consumer Price Index for All Urban Consumers (CPI-U): Indexes for semiannual averages and percent changes for selected periods

Denver-Boulder-Greeley, CO (1982-84=100 unless otherwise noted)

Item and Group	Semiannual average indexes			Percent change to 1st half 2012 from—	
	1st half 2011	2nd half 2011	1st half 2012	1st half 2011	2nd half 2011
Expenditure category					
All items	219.055	221.521	222.960	1.8	0.6
All items (1967=100)	730.456	738.682	743.477	-	-
Food and beverages	207.141	210.675	214.698	3.6	1.9
Food	209.574	213.632	217.694	3.9	1.9
Food at home	209.663	214.220	218.526	4.2	2.0
Food away from home	208.860	212.660	216.642	3.7	1.9
Alcoholic beverages	189.546	187.131	190.919	.7	2.0
Housing	196.967	199.036	199.174	1.1	.1
Shelter	217.851	219.845	222.525	2.1	1.2
Rent of primary residence ¹	214.004	216.946	220.199	2.9	1.5
Owners' equivalent rent of residences ^{1 2}	212.684	214.549	217.170	2.1	1.2
Owners' equivalent rent of primary residence ^{1 2}	212.684	214.549	217.170	2.1	1.2
Fuels and utilities	200.400	211.398	196.599	-1.9	-7.0
Household energy	150.256	159.812	145.606	-3.1	-8.9
Energy services ¹	148.617	158.205	143.857	-3.2	-9.1
Electricity ¹	145.404	155.041	143.634	-1.2	-7.4
Utility (piped) gas service ¹	157.410	167.293	148.941	-5.4	-11.0
Household furnishings and operations	121.160	118.422	117.103	-3.3	-1.1
Apparel	101.516	101.474	97.037	-4.4	-4.4
Transportation	258.846	261.757	263.306	1.7	.6
Private transportation	256.101	259.875	262.096	2.3	.9
Motor fuel	275.765	282.487	286.006	3.7	1.2
Gasoline (all types)	274.209	280.802	283.945	3.6	1.1
Gasoline, unleaded regular ³	271.307	278.000	281.125	3.6	1.1
Gasoline, unleaded midgrade ^{3 4}	257.400	263.338	266.156	3.4	1.1
Gasoline, unleaded premium ³	273.957	279.961	283.187	3.4	1.2
Medical care	447.767	456.780	469.672	4.9	2.8
Recreation ⁵	143.672	144.258	146.260	1.8	1.4
Education and communication ⁵	117.866	119.449	120.414	2.2	.8
Other goods and services	331.611	335.797	341.039	2.8	1.6
Commodity and service group					
All items	219.055	221.521	222.960	1.8	.6
Commodities	169.273	171.649	172.611	2.0	.6
Commodities less food and beverages	149.255	151.033	150.453	.8	-.4
Nondurables less food and beverages	181.860	184.485	184.682	1.6	.1
Durables	116.372	117.187	115.913	-.4	-1.1
Services	261.818	264.358	266.119	1.6	.7
Special aggregate indexes					
All items less medical care	208.135	210.357	211.407	1.6	.5
All items less shelter	220.839	223.612	224.545	1.7	.4
Commodities less food	150.806	152.425	152.009	.8	-.3
Nondurables	195.191	198.278	200.300	2.6	1.0
Nondurables less food	181.819	184.096	184.536	1.5	.2
Services less rent of shelter ²	326.934	330.349	330.777	1.2	.1
Services less medical care services	246.109	248.268	249.372	1.3	.4
Energy	206.583	214.680	208.943	1.1	-2.7
All items less energy	221.122	223.043	225.174	1.8	1.0
All items less food and energy	223.668	225.186	226.917	1.5	.8

¹ This index series was calculated using a Laspeyres estimator. All other item stratum index series were calculated using a geometric means estimator.

² Index is on a November 1982=100 base.

³ Special index based on a substantially smaller sample.

⁴ Indexes on a December 1993=100 base.

⁵ Indexes on a December 1997=100 base.

- Data not available.

Table 2. Consumer Price Index for Urban Wage Earners and Clerical Workers (CPI-W):Indexes for semiannual averages and percent changes for selected periods

Denver-Boulder-Greeley, CO (1982-84=100 unless otherwise noted)

Item and Group	Semiannual average indexes			Percent change to 1st half 2012 from—	
	1st half 2011	2nd half 2011	1st half 2012	1st half 2011	2nd half 2011
Expenditure category					
All items	209.099	211.960	213.588	2.1	0.8
All items (1967=100)	695.990	705.514	710.932	-	-
Food and beverages	209.102	212.685	216.713	3.6	1.9
Food	211.708	215.870	219.965	3.9	1.9
Food at home	211.279	215.615	220.036	4.1	2.1
Food away from home	212.355	216.182	220.581	3.9	2.0
Alcoholic beverages	195.001	191.758	195.308	.2	1.9
Housing	189.914	192.176	192.286	1.2	.1
Shelter	206.817	208.864	211.611	2.3	1.3
Rent of primary residence ¹	214.004	216.946	220.199	2.9	1.5
Owners' equivalent rent of residences ^{1 2}	198.551	200.292	202.739	2.1	1.2
Owners' equivalent rent of primary residence ^{1 2}	198.551	200.292	202.739	2.1	1.2
Fuels and utilities	194.970	206.059	191.737	-1.7	-7.0
Household energy	148.849	158.397	144.617	-2.8	-8.7
Energy services ¹	148.636	158.218	144.269	-2.9	-8.8
Electricity ¹	145.403	155.041	143.634	-1.2	-7.4
Utility (piped) gas service ¹	157.411	167.295	148.942	-5.4	-11.0
Household furnishings and operations	127.083	122.746	120.634	-5.1	-1.7
Apparel	94.308	96.055	94.971	.7	-1.1
Transportation	254.176	258.381	260.075	2.3	.7
Private transportation	251.538	255.986	257.982	2.6	.8
Motor fuel	275.737	282.461	286.130	3.8	1.3
Gasoline (all types)	274.205	280.798	283.941	3.6	1.1
Gasoline, unleaded regular ³	271.312	278.005	281.130	3.6	1.1
Gasoline, unleaded midgrade ^{3 4}	257.400	263.338	266.156	3.4	1.1
Gasoline, unleaded premium ³	273.995	279.999	283.227	3.4	1.2
Medical care	446.949	457.242	471.267	5.4	3.1
Recreation ⁵	123.419	124.049	126.627	2.6	2.1
Education and communication ⁵	114.434	115.039	115.266	.7	.2
Other goods and services	334.615	339.059	342.933	2.5	1.1
Commodity and service group					
All items	209.099	211.960	213.588	2.1	.8
Commodities	173.284	176.187	177.978	2.7	1.0
Commodities less food and beverages	151.683	154.289	154.662	2.0	.2
Nondurables less food and beverages	191.469	195.318	197.972	3.4	1.4
Durables	111.074	112.398	110.989	-.1	-1.3
Services	247.135	249.976	251.692	1.8	.7
Special aggregate indexes					
All items less medical care	199.606	202.241	203.553	2.0	.6
All items less shelter	213.581	217.032	218.098	2.1	.5
Commodities less food	153.033	155.382	155.891	1.9	.3
Nondurables	203.685	207.344	211.377	3.8	1.9
Nondurables less food	191.048	194.309	197.107	3.2	1.4
Services less rent of shelter ²	292.212	296.436	296.118	1.3	-.1
Services less medical care services	232.074	234.536	235.724	1.6	.5
Energy	213.661	222.309	218.295	2.2	-1.8
All items less energy	209.130	211.370	213.558	2.1	1.0
All items less food and energy	209.531	211.356	213.350	1.8	.9

¹ This index series was calculated using a Laspeyres estimator. All other item stratum index series were calculated using a geometric means estimator.

² Index is on a November 1984=100 base.

³ Special index based on a substantially smaller sample.

⁴ Indexes on a December 1993=100 base.

⁵ Indexes on a December 1997=100 base.

- Data not available.