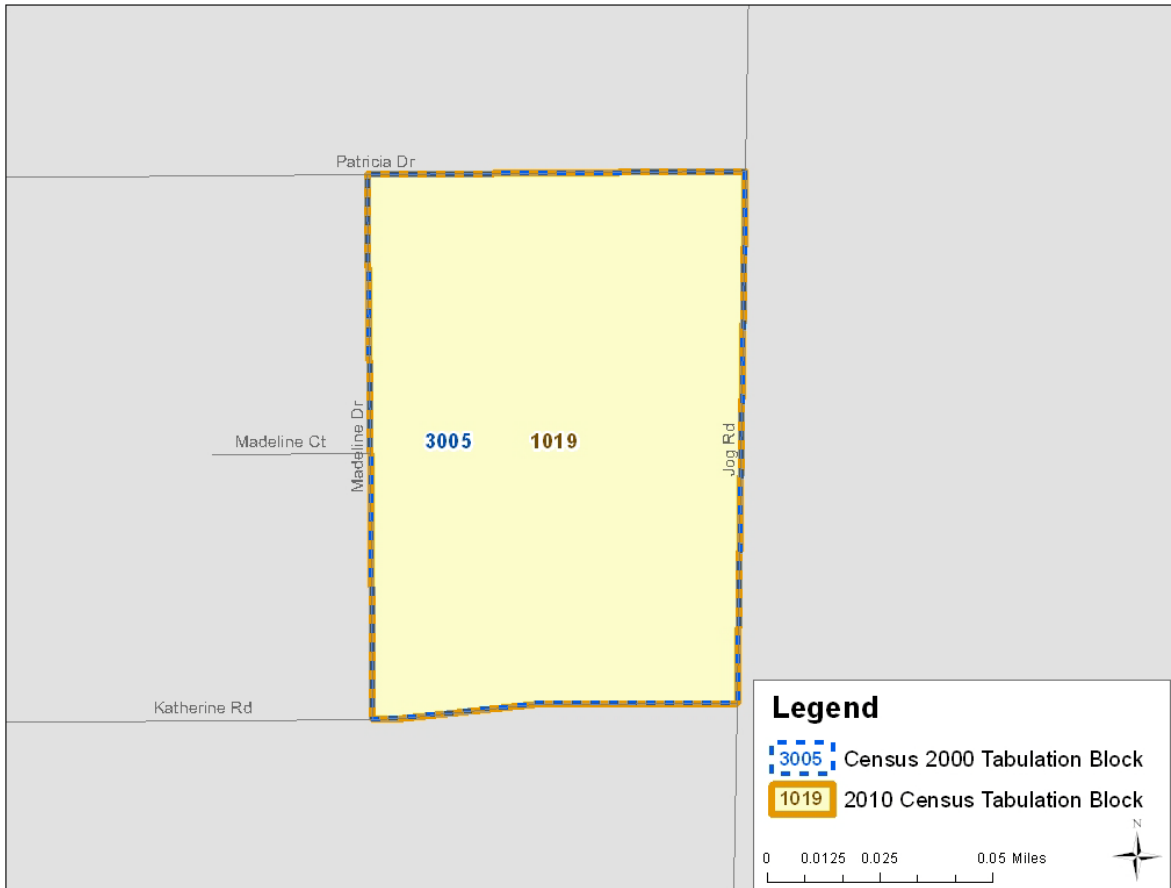


## Explanation of Block Relationship Files: Example 1.

In this simple example, the Census 2000 tabulation block 3005 and the 2010 Census tabulation block 1019 have the same boundary and share the same area. Since the two blocks are the same, there is no "p" in either BLOCK\_PART\_FLAG fields. Below is the record from the Block Relationship File and a map of the area.

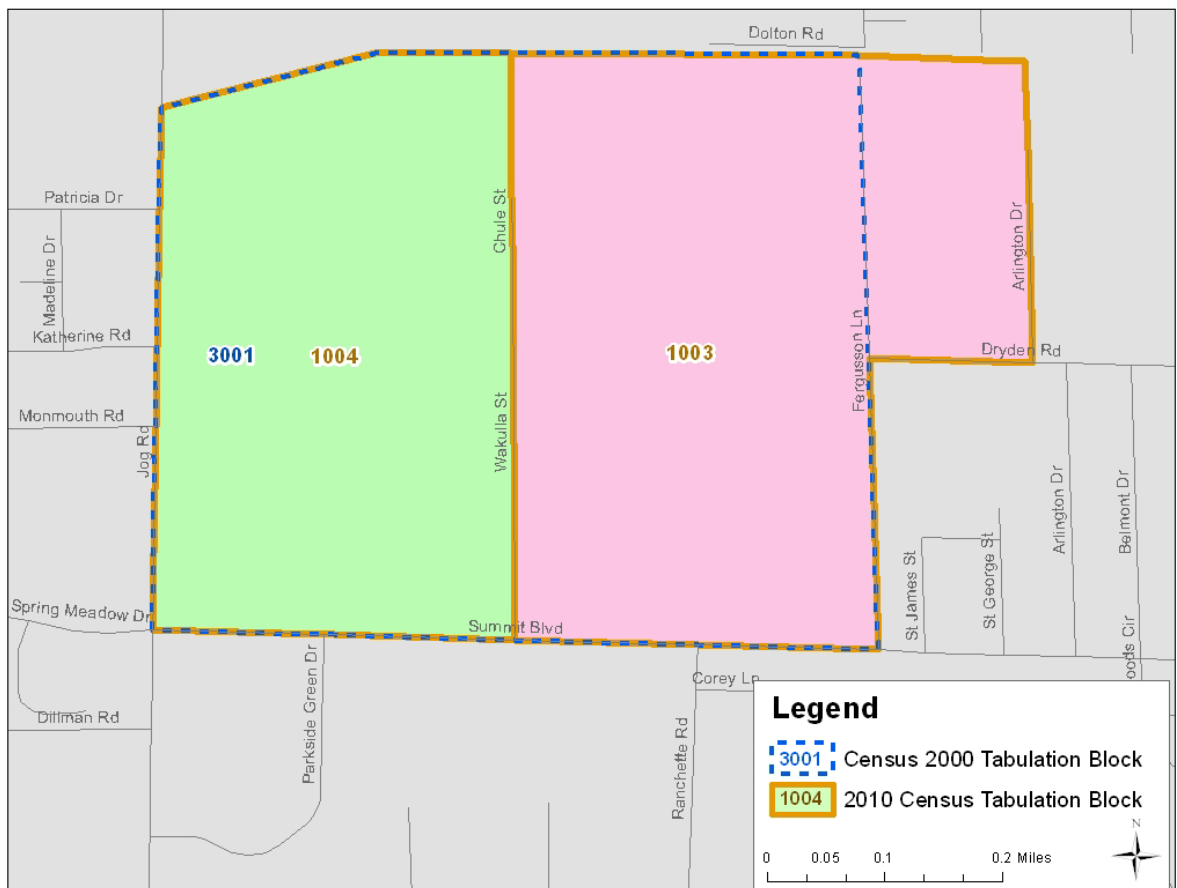
FIELD	VALUE
STATE_2000	12
COUNTY_2000	099
TRACT_2000	003902
BLK_2000	3005
BLKSF_2000	
AREALAND_2000	22539
AREAWATER_2000	0
BLOCK_PART_FLAG_O	
STATE_2010	12
COUNTY_2010	099
TRACT_2010	003902
BLK_2010	1019
BLKSF_2010	
AREALAND_2010	22539
AREAWATER_2010	0
BLOCK_PART_FLAG_R	
AREALAND_INT	22539
AREAWATER_INT	0



## Explanation of Block Relationship Files: Example 2.

In this example, the Census 2000 tabulation block 3001 is now two parts 2010 Census tabulation block: part of 1003 and all of 1004. The area of 2010 Census block 1003 is 436,170 m<sup>2</sup>, but only 352,953 m<sup>2</sup> falls in Census 2000 block 3001. Since the Census 2000 block is split into more than one 2010 Census block, there is a "p" in the BLOCK\_PART\_FLAG\_O field (the "\_O" corresponds to the 2000 tabulation block or originating block). Since the 2010 Census block 1003 is partially in Census 2000 block 3001 and partially in another block, there is a "p" in the BLOCK\_PART\_FLAG\_R field (the "\_R" corresponds to the 2010 tabulation block or relating block). Since the 2010 Census block 1004 is wholly within Census 2000 block 3001, there is no "p" in that field. Below are the records from the Block Relationship File and a map of the area.

FIELD	VALUE FOR RECORD 1	VALUE FOR RECORD 2
STATE_2000	12	12
COUNTY_2000	099	099
TRACT_2000	003902	003902
BLK_2000	3001	3001
BLKSF_2000		
AREALAND_2000	690641	690641
AREAWATER_2000	0	0
BLOCK_PART_FLAG_O	p	p
STATE_2010	12	12
COUNTY_2010	099	099
TRACT_2010	003902	003902
BLK_2010	1003	1004
BLKSF_2010		
AREALAND_2010	436170	337688
AREAWATER_2010	0	0
BLOCK_PART_FLAG_R	p	
AREALAND_INT	352953	337688
AREAWATER_INT	0	0



### Explanation of Block Relationship Files: Example 3.

In the example below, the Census 2000 tabulation block 3000 is now five parts 2010 Census tabulation block: all of 1000, 1001, 1002, 1022, and part of 1003. The area of 2010 Census block 1003 is 436,170 m<sup>2</sup>, but only 83,217 m<sup>2</sup> falls in Census 2000 block 3000. Since Census 2000 block 3000 is split into more than 2010 Census block, there is a "p" in the BLOCK\_PART\_FLAG\_O field (the "\_O" corresponds to the 2000 tabulation block or the originating block). Since 2010 Census block 1003 is partially within Census 2000 block 3000, and partially within another block, there is a "p" in the BLOCK\_PART\_FLAG\_R field (the "\_R" corresponds to the 2010 tabulation block or relating block). Since 2010 Census blocks 1000, 1001, 1002, and 1022 fall wholly within Census 2000 block 3000, there is no "p" in that field for those records. Below are the records from the Block Relationship File and a map of the area.

FIELD	VALUE FOR RECORD 1	VALUE FOR RECORD 2	VALUE FOR RECORD 3	VALUE FOR RECORD 4	VALUE FOR RECORD 5
STATE_2000	12	12	12	12	12
COUNTY_2000	099	099	099	099	099
TRACT_2000	003902	003902	003902	003902	003902
BLK_2000	3000	3000	3000	3000	3000
BLKSF_2000					
AREALAND_2000	396444	396444	396444	396444	396444
AREAWATER_2000	0	0	0	0	0
BLOCK_PART_FLAG_O	p	p	p	p	p
STATE_2010	12	12	12	12	12
COUNTY_2010	099	099	099	099	099
TRACT_2010	003902	003902	003902	003902	003902
BLK_2010	1000	1002	1022	1001	1003
BLKSF_2010					
AREALAND_2010	52482	134039	108176	18530	436170
AREAWATER_2010	0	0	0	0	0
BLOCK_PART_FLAG_R					p
AREALAND_INT	52482	134039	108176	18530	83217
AREAWATER_INT	0	0	0	0	0

