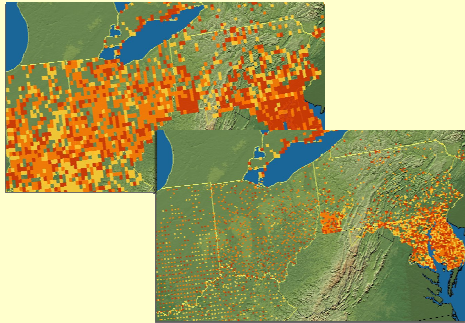


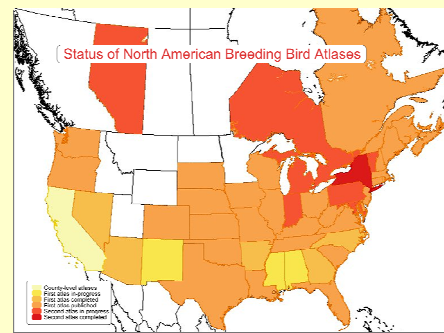
North American Breeding Bird Atlas Viewer

Mark Wimer, Bruce Peterjohn, Naoko Griffin, and Anna Ott
 USGS-Patuxent Wildlife Research Center
 12100 Beech Forest Road, Laurel, MD 20708-4038
 contact email: mark_wimer@usgs.gov



SMOOTHING & SAMPLING:

In BBA Viewer, optional quad-level mapping (left image) smooths the visual comparison between complete and priority-block sampling (Orchard Oriole).

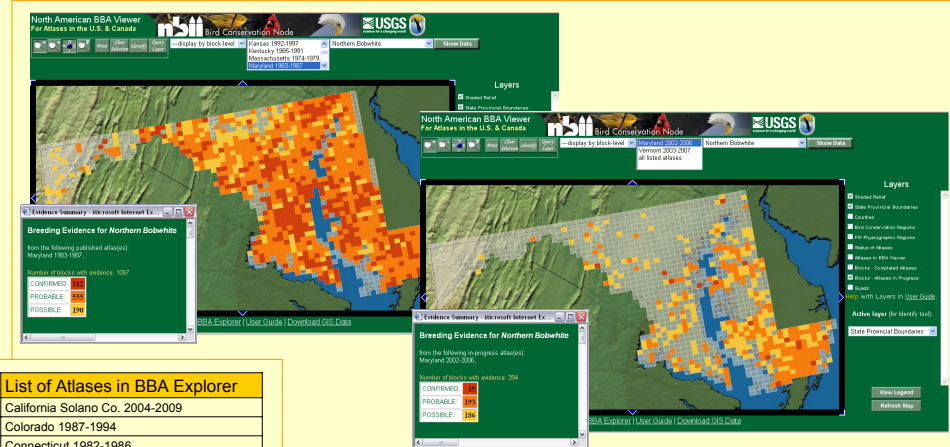


ALL ATLASES IN NORTH AMERICA

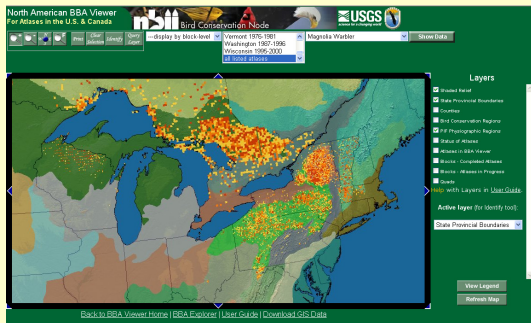
Breeding bird atlases have been conducted over much of North America. Some states (darker colors above) are conducting second-round atlases, such as Maryland (bobwhite example, upper right).

List of Atlases in BBA Explorer

| |
|-------------------------------------|
| California Solano Co. 2004-2009 |
| Colorado 1987-1994 |
| Connecticut 1982-1986 |
| Delaware 1983-1987 |
| Florida 1986-1991 |
| Indiana 1985-1990 & 2005-2010 |
| Kansas 1992-1997 |
| Kentucky 1985-1991 |
| Maine 1978-1983 |
| Maritime Provinces 1986-1990 |
| Maryland & DC 1983-1987 & 2002-2006 |
| Massachusetts 1974-1979 |
| Michigan 1983-1988 & 2002-2007 |
| Missouri 1986-1992 |
| New Hampshire 1981-1986 |
| New Mexico 2000-2010 |
| New York 1980-1985 |
| Ohio 1982-1987 |
| Ontario 1981-1985 |
| Pennsylvania 1983-1989 |
| Rhode Island 1982-1987 |
| South Carolina 1988-1995 |
| Tennessee 1989-1991 |
| Vermont 1976-1981 & 2003-2007 |
| Virginia 1985-1989 |
| Washington 1987-1996 |
| West Virginia 1984-1989 |
| Wisconsin 1995-2000 |



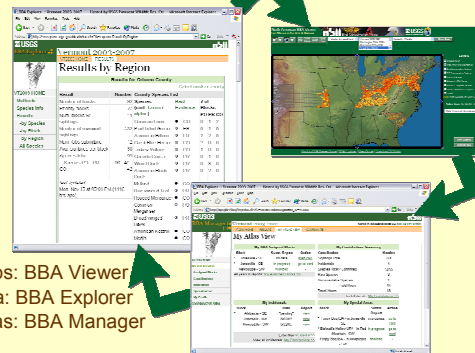
CHANGE OVER TIME:
 Northern Bobwhite: change between the two Maryland & DC atlases: 1983 (left) and 2002 (right).



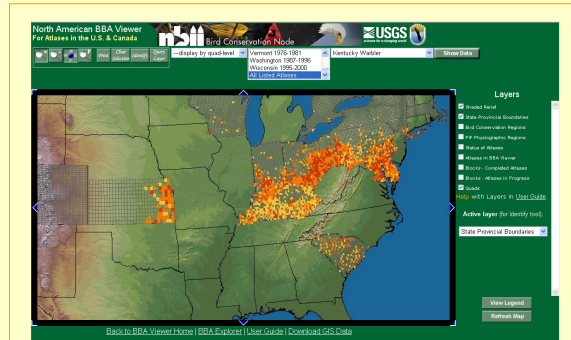
SPECIES IN ECOREGIONS

Magnolia Warbler distribution and PIF physiographic regions

- 20 – Boreal Hardwood Transition
- 24 – Allegheny Plateau
- 26 – Adirondack Mountains



- Display maps: BBA Viewer
- Browse data: BBA Explorer
- Manage atlas: BBA Manager



RANGE MAPPING:

The northern portion of the range of Kentucky Warbler, a common priority species in PIF conservation plans.

ABSTRACT

The North American BBA Viewer allows searching and display of data from multiple Breeding Bird Atlases (BBAs). The BBA Viewer is part of a group of tools integrating maintenance and display of BBA results, from data entry to coordinator review to display of final maps. Currently the BBA Viewer houses results from 15 completed atlases and 5 in-progress atlases at the state or provincial level. Besides helping individual atlases manage their projects and compare data between 1st and 2nd round atlases, the BBA Viewer has the potential to contribute to regional bird conservation. For example, combining states can provide distributional information grouped into Bird Conservation Regions or PIF physiographic regions. We welcome results from additional atlas projects, particularly those in the Southeast, which will fill in eastern continental distribution maps such as that of the Kentucky Warbler shown here.