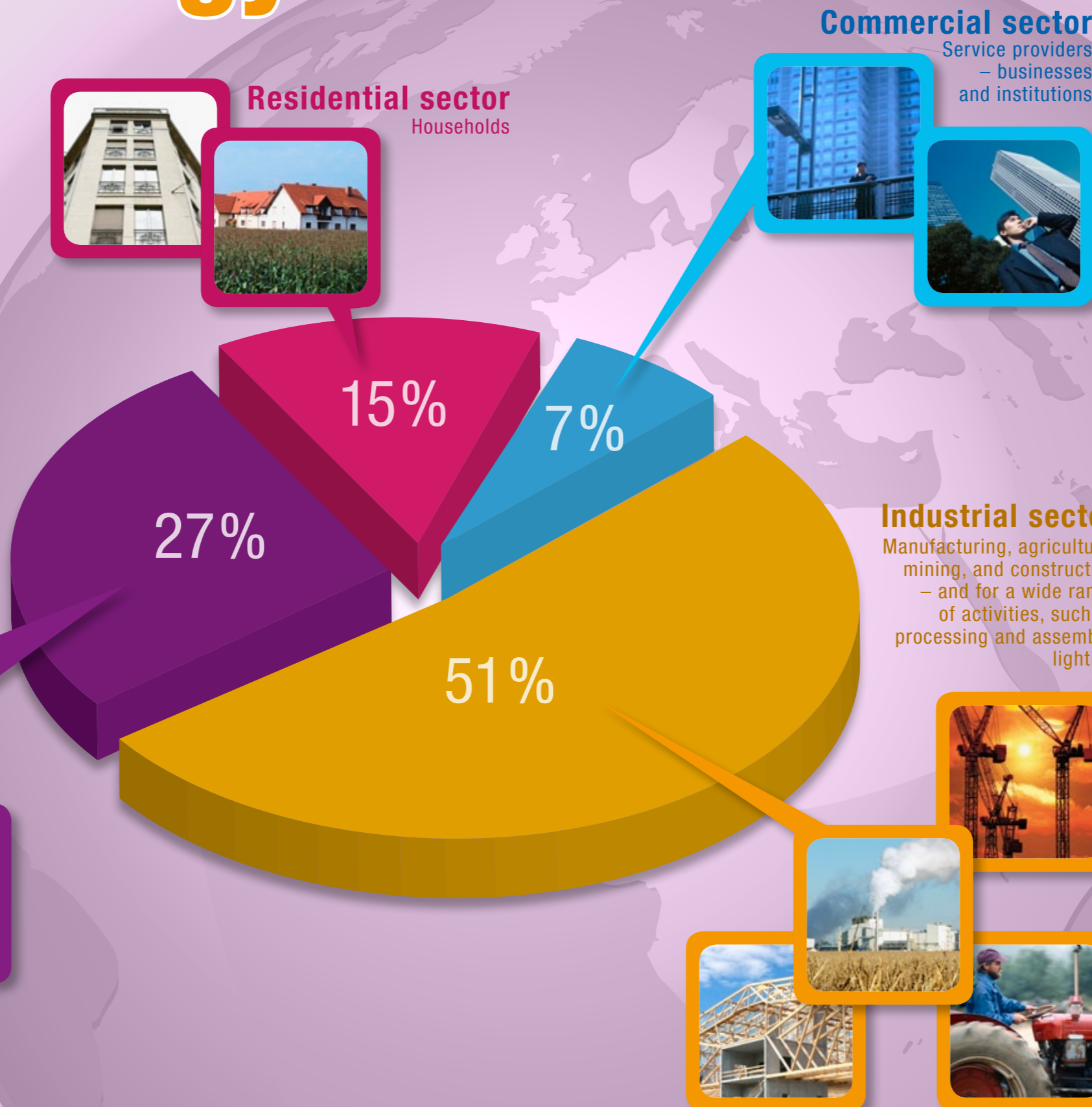


# World energy use

Total world consumption of marketed energy is projected to increase by 49% from 2007 to 2035.



**Transportation sector**  
Moving people and goods by road, rail, air, water

**Residential sector**  
Households

**Commercial sector**  
Service providers – businesses and institutions

**Industrial sector**  
Manufacturing, agriculture, mining, and construction – and for a wide range of activities, such as processing and assembly, lighting

## ISO standards that can help

**ISO 50001** on energy management systems

**ISO/IEC 13273** on common terminology for energy efficiency and renewable energy sources

**ISO 13065** on sustainability criteria for biofuels

**ISO/TC 257\*** on energy savings

**ISO 16344** on overall energy performance rating and certification of buildings

**ISO 16343** on expressing energy performance and for energy certification of buildings

**ISO 16346** on the assessment of overall building energy performance

**ISO 12655** on presentation of measured energy use of buildings

**ISO 14067** on carbon footprint of products

**ISO 14044** on environmental management life cycle assessment

**ISO 14025** on environmental labels and declarations

**ISO 13579** on measuring energy balance and calculating efficiency

**ISO 6469 series** on safety requirements of electric vehicles.

More information : [www.iso.org](http://www.iso.org)

Source: \* World Energy Demand and Economic Outlook \*, in the *International Energy Outlook 2010*, published by the US Energy Information Administration. This cites 2007 figures on global energy consumption by sector.

