

Eric A. Olson
Chairman
Chris Oliver
Executive Director

605 W 4th, Ste 306
Anchorage, AK 99501
(907) 271-2809
(907) 271-2817

www.alaskafisheries.noaa.gov/npfmc



News & Notes

North Pacific Fishery Management Council
June 2011

Thank you, Nome

The Council held its June meeting in Nome, Alaska. The Nome Chamber of Commerce along with Norton Sound Economic Development Corporation were excellent hosts. Many BBQs were held on the beach. NSEDC hosted one complete with a gold panning demonstration and a Polar Bear Plunge. A reception was held at Old St. Joe's Cathedral sponsored by NSEDC and the Western Alaska Community Development Association. A BBQ was held at the Safety Roadhouse, the last stop on the Iditarod Trail. The weather stayed consistently sunny, well into midnight, which gave everyone a chance to get out and explore the area. Thanks to the City of Nome, to the Nome Chamber of Commerce, and to NSEDC, along with the businesses and individuals who helped put the events together and who helped our meetings run smoothly. And yes, there IS no place like Nome!

Council and Plan Team Appointments

Eric Olson and John Henderschedt were recently re-appointed to the Council by the Secretary of Commerce with their three year terms beginning in August. Additionally, Dr. Steve Martell from the University of British Columbia was appointed by the Council to the Crab Plan Team for his expertise in stock assessment and modeling. Congratulations.

NPFMC Newsletter
June 2011



Bering Sea Chum Bycatch

The Council held its first initial review on an analysis evaluating proposed management measures to minimize non-Chinook salmon bycatch in the Bering Sea pollock fishery. The proposed measures include hard caps on the pollock fishery; triggered time and area closures; and participation in the Rolling Hotspot (RHS) Program, a fleet-managed program for real-time bycatch area closures on 4-7 day time frames. The Council revised and restructured the suite of alternatives and options, and requested new information. Some of the changes included the following:

- An additional option for a separate hard cap for June and July when western Alaskan chum stocks are more prevalent in the bycatch. If reached, this cap would close all fishing for Bering Sea pollock until August 1.
- Removal from consideration complicated monthly area management options and triggers (formerly Alternative 3).
- Additional provisions to the RHS program for area closures based on historical bycatch proportions (80% and 60%) to which the fleet would be subject regardless of RHS participation.
- Analysis of additional parameters of the RHS system that could be adjusted by the Council to improve program performance.

The full Council motion is posted on the website. A revised set of alternatives based upon the Council's motion will also be posted. The Council further requested that the analysis be revised per its

requests and come back to the Council for another initial review in early 2012. The exact meeting is yet to be determined. This schedule is in part to avoid reviewing the draft analysis at a Council meeting located in a place more difficult for rural western Alaska residents to access (e.g., Dutch Harbor in October 2011), and in part to avoid review at the December meeting, the months preceding which staff are focused on preparing stock assessments for the groundfish fisheries. This schedule means that the Council will review the analysis two more times prior to making a final decision: initial review in early 2012, and public review/final action at a subsequent meeting. This also provides ample time for the public to provide input on the proposed alternatives and analysis.

The Council also plans to convene another Rural Community Outreach Committee meeting this year (timing to be determined), and requested that the committee discuss whether and what type of further community outreach is needed on this issue.

Staff contact for the chum analysis is Diana Stram. Staff contact for subsistence issues and outreach is Nicole Kimball.



Swanberg Historic Dredge, Nome, Alaska

BSAI Crab Catch Specifications

The SSC recommended OFLs and ABCs for four of the ten crab stocks under the BSAI Crab FMP. This is the first year that ABC recommendations are made by the SSC to the Council in order to comply with Annual Catch Limit provisions. Six of the ten stocks will have OFLs and ABCs established following the summer survey information availability. Two of the ten stocks (Norton Sound red king crab and Al golden king crab) have OFL and ABC recommendations put forward at this time in order to have approved OFLs and ABCs prior to the summer fisheries for these stocks. The remaining two stocks (Adak red king crab and Pribilof Islands golden king crab) have OFLs recommended based on Tier 5 formulation (average catch) and OFLs and ABCs are recommended in the spring. The table of OFLs and ABCs for these stocks are posted on the Council website. The Crab SAFE report will be produced in the fall following the Crab Plan Team meeting and will include these 4 stocks as well as the recommendations on management of the remaining 6 stocks. Staff contact is Diana Stram.



Simon Kinneen of NSEDC shows his grilling expertise.

GOA Chinook Bycatch

At the June meeting, the Council took final action on management measures to limit Chinook salmon bycatch in the Western and Central GOA pollock fisheries. Chinook salmon are currently a prohibited species in the pollock fishery, and their capture must be avoided, but there are no specific management measures to minimize Chinook salmon bycatch. The Council adopted a prohibited species catch (PSC) limit of 25,000 Chinook salmon for the western and central GOA pollock fisheries. The annual cap is apportioned by area, and will close the pollock fishery in each area once the PSC limit is reached. The western and central GOA caps are:

Central GOA: 18,316 Chinook salmon

Western GOA: 6,684 Chinook salmon

The Council will also require vessels under 60 ft that are directed fishing for pollock to have observer coverage beginning no later than January 1, 2013. This primarily affects vessels in the Western GOA, where a large proportion of the fleet uses smaller boats. If the restructured observer program the Council already approved is implemented beginning in 2013, observers will be deployed under that program, otherwise vessels under 60 ft will need to comply with existing 30% observer coverage requirements until the restructured observer program comes online.

As part of this action, the Council will also require full retention of all salmon species by all vessels fishing in the pollock trawl fisheries. The purpose of full retention is to provide an opportunity for collection of scientific data or biological samples; fish that are retained may not be kept for human consumption unless they are delivered to an authorized prohibited species donation program. Currently, NMFS is only able to analyze samples from salmon that are caught as bycatch on observed pollock trips. Full retention is a key prerequisite to estimating the representative composition, by stock of origin, of Chinook salmon caught as bycatch in the GOA pollock fishery. At the June meeting, the Council heard testimony that all processors of GOA pollock (which, by regulation, must be delivered shoreside) have agreed to participate in SeaShare, an organization participating in the Alaska food bank donation program.

It is anticipated that the PSC limit may be implemented in mid-2012. If so, the Council has specified reduced PSC limits for the implementation year only, to be effective in the C and D pollock seasons. The PSC limits would be 8,929 Chinook salmon in the Central GOA, and 5,598 Chinook salmon in the Western GOA. Additionally, NMFS will work with the industry to improve observed and extrapolated Chinook salmon estimates and their timeliness.

The Council motion is posted on the Council website. Staff contact is Diana Evans.

Staff Tasking

During the staff tasking agenda item, the Council tasked staff to write and prepare discussion papers on several topics. Letters include: 1) a comment letter in response to advance notice of proposed rulemaking on potential revisions to National Standard 10 guidelines, dealing with safety at sea, noting performance of catch shares relative to safety and the responsibilities of the Enforcement Committee; 2) a letter to the agency requesting a clarification of the Council's role relative to tribal consultations; 3) a letter to the IPHC requesting assistance and cooperation with a halibut migration and stock assessment review workshop to be held prior to February if possible; and 4) a comment letter to the National Ocean Council on the draft strategic action plans. Discussion papers will be prepared on: 1) the potential to combine the GOA Pollock D-season into the A,B, and C seasons to reduce incidental catches of chinook salmon; 2) change the catch accounting of BSAI crab PSC from numbers to weight; and 3) alternative management measures for the charter halibut sector in times of low abundance to reduce uncertainty and mitigate negative economic impacts. Relative to the last discussion paper, the Council agreed to form a new Charter Management Implementation Committee to discuss issues and provide input relative to the discussion paper. Also during staff tasking, the Council further clarified that the halibut PSC package should retain both options to exempt or include in the PSC reduction (either as a % or as mt) the sideboard provisions for the AFA CVs, Am 80, and CGOA rockfish fleets. Changes to the problem statement may be considered in October. Staff contact is David Witherell.

Pribilof Islands Blue King Crab Rebuilding Plan

The Council reviewed catch data in conjunction with the upcoming public review draft for the Pribilof Islands blue king crab rebuilding plan. The primary purpose of the data review was to determine if there were differences in the applicable fisheries to which proposed closures would apply based upon examination of catch over the entire Pribilof District as compared with catch only in area 513 as in the previous analysis. Following review of these data, it was determined that the flathead sole fishery no longer met the criteria for inclusion in the closures. The fisheries which meet the threshold criteria are the trawl fisheries for rock sole, yellowfin sole, and other flatfish, as well as the Pacific cod hook-and-line and pot fisheries.

Per Council request, for the public review draft, an extrapolation will be made to include catch accruing in the entire Pribilof Island District without the use of extrapolation of rates from fisheries outside of this region (i.e. to account for unobserved fleets). Previously the Council also moved to include a sub-option for the trigger cap alternative under Option 5d to analyze an allocation by gear type of non-pelagic trawl (40%), hook-and-line (20%) and pot (40%). The Council requested that staff explore using the annual specifications process for gear allocation of a cap and to discuss the implications of a different, non-allocated cap whereby closures occur on a threshold basis (50%, 75%, 90% of the cap) and apply only to the gear type which has contributed the most in-season towards the bycatch at each threshold. This analysis will be included in the revised public review draft available in September 2011. Final action is scheduled for October 2011. Staff contact is Diana Stram.

Groundfish Management

The Council's SSC reviewed a NMFS discussion paper on several issues relating to Annual Catch Limit (ACL) measures for groundfish in the GOA and BSAI under National Standard Guideline 1. The SSC recommended that stock assessment authors and plan teams address this issue in the upcoming stock assessment cycle. The SSC recommended that stock assessment authors clearly lay out which sources of removals are currently included in the assessment, how removals from each source are estimated, and how they are being included in computing various reference points and counting them against harvesting specifications. To the extent possible, authors should discuss all known sources of mortality (including handling mortality, indirect mortality, subsistence, etc.) and which of these sources are considered in the assessment. A revised discussion paper and two working group reports on total catch accounting will be reviewed by the Groundfish Plan Teams at their August 2011 meeting.

The SSC also reviewed a report summarizing the recommendations for technical changes to the GOA and BSAI Pacific cod model for the 2011 assessments from three independent experts, the groundfish plan teams, and the public. The SSC accepted the six recommendations that could be

compressed into 4 new models from the joint plan team. Each of these models addresses at least some concerns by all groups. Model 1 is last year's model. Model 2 is comprised of two unrelated changes: using splines for selectivity and dropping survey data prior to 1982. Model 3 attempts to estimate ageing bias within the model. Model 4 is the same as some that have been used in the past in eliminating most age data. Model 5 is a reconfiguration of the time blocks for selectivity that should simplify the model and result in estimation of fewer parameters. Draft GOA and BSAI Pacific cod assessments using these five models will be reviewed by the teams in August. A draft agenda for the Groundfish Plan Team meetings will be posted on the Council's website by the end of June. Contact Dr. Grant Thompson, NMFS-AFSC, or Jane DiCosimo for more information.



Meeting attendees were treated to a BBQ on the beach, in Nome, complete with a gold panning demonstration.

Upcoming Meetings

Crab Plan Team September 19-22, 2011 AFSC Seattle

Salmon FMP Workshop – September 14, Clarion Suites, Anchorage

Observer Advisory Committee: September 15-16 AFSC, Seattle

American Fisheries Society: September 4-8, 2011, Seattle

Charter Management Implementation Committee: Fall 2011

Scallop Plan Team (T) September 28, Anchorage (location TBD)

Wakefield Symposium September 14-17, 2011 Anchorage

Groundfish Plan Teams – August 29-September 2, 2011 (T) November 14-18, 2011 Seattle

Nunivak HCA Boundary

At the June meeting, the Council scheduled a discussion of the boundary line of the Nunivak Island-Etolin Strait-Kuskokwim Bay Habitat Conservation Area (Nunivak HCA), established in 2008, to hear from the public and decide whether further action was appropriate. The Council received joint testimony from representatives of the Alaska Seafood Cooperative and the Bering Sea Elders Advisory Group. The bottom trawl industry and villages of the Yukon-Kuskokwim and Bering Strait regions, represented by these groups, respectively, have met several times since 2008, to discuss the need for changes to the Nunivak HCA boundary.

The two groups reported that they intend to continue meeting over the summer and in the fall, to exchange proposals and potentially negotiate a solution that will protect subsistence hunting and fishing, while at the same time provide for a commercial yellowfin sole fishery. They did not convey a need for Council action at this time. In light of the progress being made in these discussions, the Council chose to reschedule this agenda item for a future meeting, to allow interested parties to continue with their dialogue. Staff contact is Steve MacLean.

NBSRA Research Plan

At the June meeting, the Council chose to take a step back from its current schedule for developing a research plan for the Northern Bering Sea Research Area (NBSRA). The NBSRA was implemented in 2008, and since then bottom trawling has been prohibited in the area. In establishing the NBSRA, however, the Council indicated that bottom trawling could be allowed in the future, under the guidelines of a scientific research plan. The Alaska Fisheries Science Center (AFSC) has been asked by the Council to develop the plan, and was planning to present a draft to the Council at the December 2011 meeting.

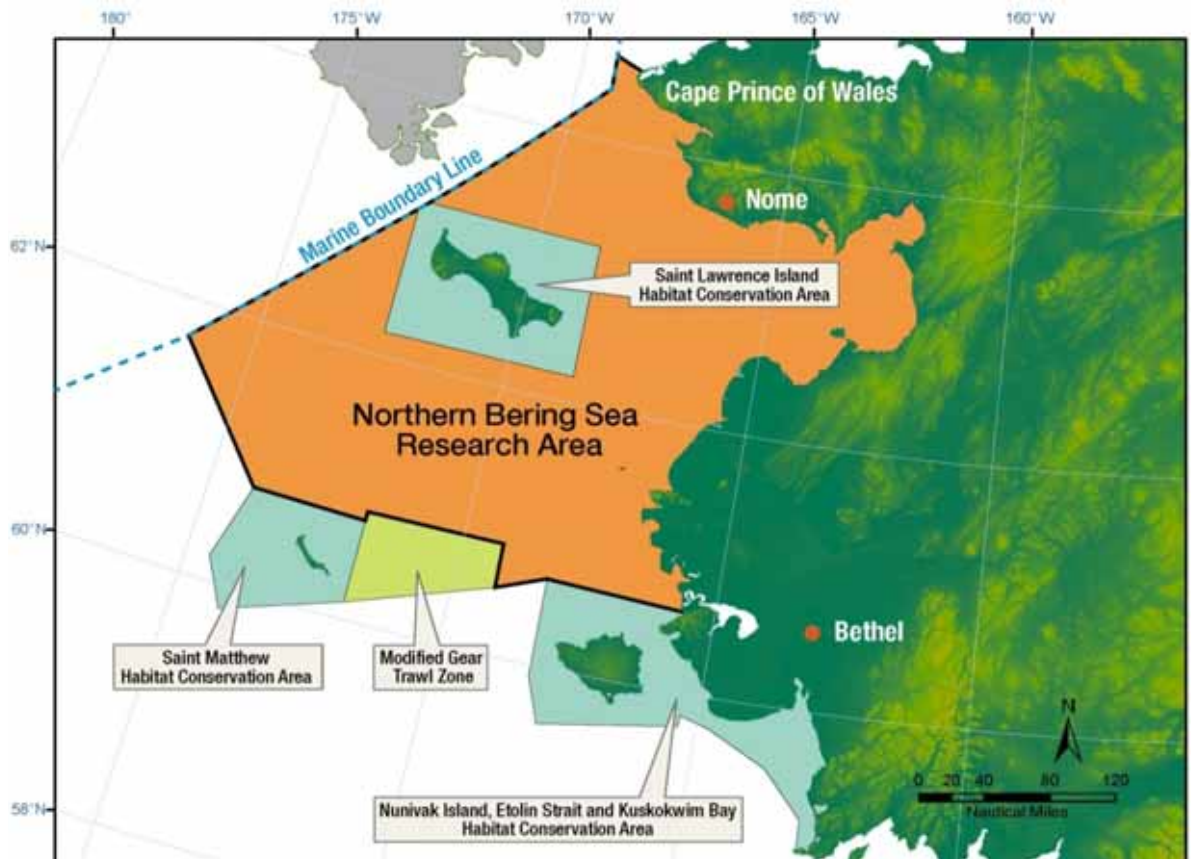
The Council received a progress report and plan outline from staff of the AFSC, and also considerable public testimony from tribes and members of communities adjacent to the research area. The Council suspended work on the development of the research plan, and instead initiated a discussion paper to compile background information on the NBSRA which should allow the Council to re-evaluate the feasibility and need to continue with developing a research plan in the future.

The paper will provide a review of information on the northern Bering Sea ecosystem, previous and ongoing relevant research in the northern Bering

Sea, studies on chronic and acute effects of bottom trawling, and outcomes of the 2010 and 2011 science and community/subsistence workshops that were hosted by the AFSC. The Council noted that much of this information has already been synthesized by the AFSC for presentations at the various workshops. During testimony, the Council also received a draft of an upcoming publication of the Bering Sea Elders Advisory Group, which documents the dependence of Alaska Natives on northern Bering Sea areas, and promises to be a valuable information source for understanding subsistence needs.

The paper will also categorize areas within the NBSRA that are likely to be attractive in the future to commercial trawling interests, both in terms of target stock distribution and habitat type, in order to help focus outreach to, and input from, northern Bering Sea communities. Additionally, the paper will consider to what extent trawl impact research could be conducted in the Modified Gear Trawl Zone, adjacent to the NBSRA, which is currently open to bottom trawling.

In light of the change in Council direction, the AFSC is reconsidering the scope and timing of a scheduled community/subsistence workshop in September in Nome. Staff contact is Steve MacLean.



Halibut Management

Catch Sharing Plan Algorithm

At its June 2011 meeting the Council selected a hybrid of two mathematical approaches that previously had been considered for determining the maximum size of a one-fish bag limit for the Pacific halibut charter sector during periods of low halibut abundance. The Council will recommend this approach in a letter to NMFS during the public comment period on the proposed rule for the proposed halibut catch sharing plan (CSP). The proposed CSP was adopted in October 2008 and proposed for implementation in 2012. It calls for a maximum size limit in the charter halibut fishery at lower levels of combined charter and commercial catch limits, but it did not identify how the size limit would be determined.

Two approaches that previously were considered differ in their assumptions about the possible amount and effect of high-grading (the practice of releasing small halibut and continuing to fish in an attempt to keep a larger fish). Method A uses sample data from the previous year's fishery to estimate charter harvest for the upcoming year. It may underestimate charter harvest and result in the sector exceeding its catch limit if anglers are able to increase the average size of retained halibut relative to the previous year. Method B does not use sample data from the previous year's fishery. It uses a conservative assumption that all halibut harvested under the maximum length limit would be equal to the maximum length. Method B is the most biologically conservative because it is likely to overestimate charter harvest and result in charter harvest not reaching the sector's allocation. It was identified in the Council's analysis and draft proposed rule as part of the Council's preferred alternative for the CSP.

The Council reviewed a proposal for an alternative method to calculate a maximum size limit that was proposed by ADF&G staff.

It combines extreme assumptions used in methods A and B to produce an intermediate result. The hybrid approach would be used to calculate a maximum size limit using data from a previous year in which the fishery was not constrained by a size limit, or a year in which a less constraining (higher) maximum size limit was in place to manage the charter fishery under its allocation. It assumes that under a size limit in the coming year: 1) the proportion of the halibut harvest that will be smaller than the size limit will equal the proportion that were under that length in the previous year; 2) the average weight of fish smaller than the size limit will remain unchanged from the previous year; and 3) the portion of the previous year's harvest that was larger than the prospective maximum size limit will be exactly equal to the size limit in the coming year. The Council selected the hybrid alternative as its recommendation to NMFS for implementing the CSP. The Council will submit a letter recommending the hybrid approach during the public comment period for the proposed rule for the CSP, which is expected to occur this summer. Staff contact is Jane DiCosimo.

Call for Nominations

The Council will form a Charter Management Implementation Committee to review a draft discussion paper on alternative measures to the current one fish of a maximum size under the Halibut Catch Sharing Plan's lowest catch limit tiers. The committee would meet sometime after August. The Council requests that nominations to the committee be submitted in writing to the Council no later than August 1. This is a no-host committee, meaning members are responsible for their own travel costs. Contact Jane DiCosimo.

NPRB Seeks Nominations

The North Pacific Research Board is seeking nominations for its Advisory Panel with expertise in the Bering Sea. The Advisory Panel members advise the Board on accomplishing its overall mission of fielding a high caliber, comprehensive research program that will improve understanding of the Gulf of Alaska, Bering Sea and Aleutian Islands, and Arctic Ocean ecosystems and their fisheries, and help to sustain and enhance the living marine resources.

The Board believes it is important to incorporate meaningful community involvement throughout its science program from planning to oversight and review. The Advisory Panel has a significant advice-giving role, with active involvement in setting research priorities. Advisory Panel members serve three-year terms and the new terms would commence retroactive to April 1, 2011. The Board covers travel, food and lodging for panel members for the annual Advisory Panel meetings which occur in April and September.

Nominations and self-nominations may be submitted to the Board by email to cynthia.suchman@nprb.org, or by regular mail to: Cynthia Suchman, Executive Director, North Pacific Research Board, 1007 West 3rd Avenue, Suite 100, Anchorage, AK 99501

Deadline for nominations is **Monday, July 25, 2011**. Please include a brief 1-2 page resume and full contact information, including email address. Please visit the Board's web site at www.nprb.org for more information about the Board and its activities.

The Board's consideration of nominations will occur early August, 2011. New members will be informed shortly thereafter, well ahead of the meeting September 13-14, 2011.

GOA Halibut Prohibited Species Catch Limits

In April 2011 the Council adopted a problem statement, a suite of alternatives, and a timeline to implement proposed reductions of 5, 10, or 15 percent to trawl and fixed gear apportionments of Pacific halibut Prohibited Species Catch (PSC) limits through the GOA Groundfish Specifications for 2012. The Council also requested a status report of the proposed action at its June 2011 meeting. An interagency staff meeting in May 2011 produced a draft action plan that identified the analytical requirements and implementation steps required to ensure that the Council's 2012 implementation timeline would be achieved. The Council would select a preliminary preferred alternative during initial review of the analysis in October 2011 for publication in the 2012/2013 GOA groundfish specifications proposed rule, so that its final preferred alternative adopted in December 2011 is a logical outgrowth of the proposed rule. The 30-day public comment period on the proposed rule may overlap the December 2011 Council meeting. Upon implementation (typically in March each year), Council recommendations for final GOA groundfish specifications, including revised halibut PSC limits and their seasonal apportionments, would replace those limits that automatically go into place on January 1. NMFS may implement the proposed changes in separate publications in the *Federal Register* if necessary.

During its June meeting, the Council reviewed the draft action plan that would result in an initial review draft of the analysis in October. The action plan included minor suggested changes to the problem statement, which the Council elected to address during initial review of the document. The Council clarified that its intent is not to modify the GOA Rockfish Program's halibut PSC allowance available during July. The Council also retained alternatives that would either reduce the halibut PSC sideboard limits for the GOA Rockfish Program, BSAI Amendment 80 sector, and the non-exempt AFA fleet at the same rate the overall trawl limit is reduced, or convert the sideboard limits to metric tons of halibut to insulate the sideboard limits from the proposed reductions. Contact Jane DiCosimo for more on all halibut management information.

Research Priorities

The Council has identified priorities for research in the next 1 to 5 years as those activities that are the most important for the conservation and management of fisheries in the Gulf of Alaska, Aleutian Islands, eastern Bering Sea, and the Arctic. This listing of priorities has two purposes: 1) to meet the requirements of the revised Magnuson-Stevens Act for the Councils to identify research that is needed in the next 5 years, and 2) to provide guidance on research priorities to the research community and to funding agencies.

The research priorities are separated into two categories: *Immediate Concerns* and *Ongoing Needs*. Immediate Concerns include research activities that must be addressed to satisfy federal requirements and to address pressing fishery management and ecosystem issues related to fishery management. Within this category the Council's Scientific and Statistical Committee (SSC) has indicated those Research Priorities for which *Research is Underway*. These are Research Priorities for which NPRB grants have been awarded or for which it is known to the SSC that one or more other agencies have undertaken the recommended research. These priorities will remain on the list until the recommended research is complete and evaluated in terms of its meeting the Research Priority that had been listed. Ongoing Needs include research to advance the Council's fisheries management goals as defined in the Groundfish PSEIS, other strategic documents of the Council (i.e., FMPs, AI FEP, and EFH, crab, salmon PSC, and other EISs) and NMFS. Ongoing Needs include efforts on which the assessment models depend for their annual updates. For example, without the survey information, the annual process of setting ABCs and OFLs for the managed stocks would be compromised. The Council sees these efforts as needed on an ongoing basis, and constituting the time series on which management is based. It should be recognized that research in these categories is being conducted or may be conducted through Federal, State of Alaska, North Pacific Research Board, and other funding sources. The Council's research priorities are posted on the website. Staff contact for groundfish is Jane DiCosimo, for crab and scallop is Diana Stram.

Meeting attendees took a break to participate in the Polar Bear Plunge during the recent Council meeting in Nome.



DRAFT NPFMC THREE-MEETING OUTLOOK - updated 6/15/11

September 26 -October 4, 2011 Unalaska, AK	December 5 -13, 2011 Anchorage, AK	January 30 -February 7, 2012 Seattle, WA
Observer Program: Review Restructuring Regulations; OAC Report	Halibut Subsistence: Update Charter halibut alternative management measures: Committee Report and Discussion Paper	AFA Vessel Replacement Sideboards: Discussion Paper (T)
GOA Halibut PSC: Initial Review; white paper on IBQs	GOA Halibut PSC: Final Action	Halibut Migration Model review; workshop report: SSC Review (T)
GOA Pacific cod A-season opening dates: Discussion paper GOA pollock D-season: Discussion paper (T)	GOA P.cod Jig Fishery Management: Final Action (T)	
Salmon FMP: Initial Review; Workshop Report	GOA Chinook Bycatch All Trawl Fisheries: Discussion Paper (T)	
CQE vessel use caps: Initial Review/ Final Action (T) CQE in Area 4B: Initial Review Area 4B Fish-up: Discussion/Direction BS & AI P.cod split: Discussion paper (T)	Salmon FMP: Final Action Halibut/sablefish IFQ changes: Discussion paper (T) Halibut/Sablefish IFQ Leasing prohibition: Discussion paper (T) CQE in Area 4B: Final Action	BS & AI P.cod split: Initial Review (T) Northern Bering Sea Research: Review Draft Plan (T)
GOA Flatfish Trawl Sweep Modifications: Initial Review	GOA Flatfish Trawl Sweep Modifications: Final Action	BSAI Flatfish specification flexibility: Discussion Paper (T)
BS Freezer longliners: Discussion paper on vessel replacement; Draft Regs Catch Monitoring & Enforcement	Groundfish PSEIS: Discuss schedule	Grenadiers and EC Category: Discussion paper (T)
Crab EDR Revisions: Initial Review (T) BSAI Crab: Report from stakeholders	Crab EDR Revisions: Final Action (T)	BSAI Tanner Crab rebuilding plan: Initial Review (T)
BSAI Crab SAFE Report: Approve catch specifications Pribilof BKC Rebuilding Plan: Final Action Tanner Crab Rebuilding: Review Alternatives	Groundfish SAFE Report: Adopt final catch specifications BBRKC spawning area/fishery effects: Updated Disc paper (T)	
HAPC - Skate sites: Initial Review	BS Habitat Conservation Area Boundary: Review (T) HAPC - Skate sites: Final Action	ITEMS BELOW FOR FUTURE MEETINGS Crab PSC numbers to weight: Discussion paper Crab bycatch limits in BSAI groundfish fisheries AI P.cod Processing Sideboards: Initial Review BSAI Chum Salmon Bycatch: Initial Review in April BSAI halibut PSC limit: Discussion paper GOA comprehensive halibut bycatch amendments: Disc paper MPA Nominations: Discuss and consider nominations
Groundfish catch specifications: Adopt proposed specifications		
Halibut mortality on trawlers EFP: Review/Approve (T)		

AI - Aleutian Islands
AFA - American Fisheries Act
BiOp - Biological Opinion
BSAI - Bering Sea and Aleutian Islands
BKC - Blue King Crab
BOF - Board of Fisheries
CQE - Community Quota Entity
CDQ - Community Development Quota
EDR - Economic Data Reporting
EFP - Exempted Fishing Permit
EIS - Environmental Impact Statement
EFH - Essential Fish Habitat
GOA - Gulf of Alaska

GKC - Golden King Crab
GHL - Guideline Harvest Level
HAPC - Habitat Areas of Particular Concern
IFQ - Individual Fishing Quota
MPA - Marine Protected Area
PSEIS - Programmatic Supplemental Impact Statement
PSC - Prohibited Species Catch
RKC - Red King Crab
ROFR - Right of First Refusal
SSC - Scientific and Statistical Committee
SAFE - Stock Assessment and Fishery Evaluation
SSL - Steller Sea Lion
TAC - Total Allowable Catch

Future Meeting Dates and Locations

September 26 - , 2011 in Unalaska
December 5 - , 2011 in Anchorage
January 30- Feb 7 2012 - Reannnaissance Hotel, Seattle
March 26-April 3, 2012 Hilton Hotel - Alaska
June 4 - June 12, 2012 Kodiak Best Western
October 1-Oct 9, 2012 - Hilton Hotel, Anchorage
December 3 - Dec 11, 2012 - Anchorage

(T) Tentatively scheduled