



EIV Single Sign-On via WASS

Office of Public and Indian Housing
Enterprise Income Verification (EIV)

February 2005



Welcome to our Single Sign On for EIV Presentation. Just so people are not confused, let me quickly say that EIV, the Enterprise Income Verification system is the new name for UIV, the Up-front Income Verification system.

I want to thank you for taking time out of your busy schedules to attend this briefing. We are certain that it will be time well spent on your part. Single Sign On, which is being implemented by PIC and EIV this month will make your working with multiple HUD systems more convenient by ending having to log on and off with multiple HUD id's. We want to make everyone familiar with the new Single Sign On experience. Later in the briefing we will also explain about the temporary alternative process that will be available for those few users who cannot be restricted to a single ID in EIV.

Overview

- ❑ On February 22, the EIV system is implementing Single Sign On (SSO) through the WASS system.
- ❑ PHA Security Officers will need to submit forms to have the WASS IDs of current and new EIV users assigned EIV roles.
- ❑ FO Security Officers will review and approve requests to give the WASS IDs EIV roles.

On February 22, the EIV system will be implementing Single Sign On (SSO) through the WASS system. This authentication method will allow users to have only one user ID and password, but the ability to access multiple systems through one common login interface.

Using WASS to Access EIV

- ❑ Most users will use WASS to access EIV.
 - ❑ Internal – Users will use their current H or C IDs to authenticate in WASS.
 - ❑ External – Users will use their current M or I IDs to authenticate in WASS.
- ❑ Once authenticated, users click on EIV link.
- ❑ User rights in EIV are based on the roles assigned by EIV Security Officers in EIV.

In implementing Single Sign On (SSO), WASS uses different methods for internal and external users.

- ❑ Internal users will be those using H or C Ids. They are either HUD employees or Contractors working for HUD.
- ❑ External users will be using M or I Ids. They are people who for PHAs or who do independent auditing.

Although the interfaces for the two types of users employ different technology, the differences for the user are minor. Because both groups of users are in the audience, we will run you through both processes.

Once the system accepts the user's ID and password, the user will be able to click a link to the EIV application. If the user has rights to more than one HUD system, he/she will be offered a list with links to of those systems. You will always see the PIC system listed along with EIV. That is because EIV uses the PIC user pool as a pre-qualifier for access to the EIV system. However, PIC users who access EIV but who have not been assigned roles in EIV will merely see icons for the EIV User Manual and for Adobe Acrobat.

Logging Into EIV using WASS Internal Sign On

The URL for internal access to WASS is <https://www11.hud.gov/ssmaster>

WebThru Login - Microsoft Internet Explorer

File Edit View Favorites Tools Help

Search Favorites Media

Address <https://www11.hud.gov/ssmaster>

Secure Systems
Single Sign On

User Login

housing | mail | help | search | home

User ID

Password

Guest Login Cancel

ATTENTION: This computer system, and all the systems associated with this system for User Authorization and Authentication, are protected by a computer security system; unauthorized access to these systems is not permitted, and usage may be monitored.

NOTE: There is an inactivity timeout of 30 minutes. Please save your work periodically to avoid being logged out

Content updated February 11, 2005

U.S. Department of Housing and Urban Development
451 7th Street S.W., Washington, DC 20410
Telephone: (202) 708-1112 TTY: (202) 708-1455

Home | Privacy Statement

Done Local Intranet

start Local Intranet IAD User Menu 589973.doc - Net... WebThru Login - N... 2:42 PM

This is a screenshot of the Internal Login screen for WASS. The design is pleasant and easy to use.

Internal Sign-On

- ❑ Please enter your WASS User ID (H or C ID) in the “User ID” field and your PIC Password in the “Password” field.
- ❑ **Although it is possible to access WASS as a Guest, no Guest will find a link to EIV within WASS.**
- ❑ Click “Log In” for system access.

Please enter your WASS User ID (H or C ID) in the “User ID” field and your PIC Password in the “Password” field.

One point to note is that although the WASS login permits a Guest Login to WASS, no Guest will have a link to EIV through WASS. Click “Log In” for system access.

Logging Into EIV using WASS External Sign on

The internet URL for access to WASS is
https://www11.hud.gov/HUD_Systems



External Sign-On

- Please enter your PIC/EIV User ID (M or I ID) in the “**User ID**” field and your Password in the “**Password**” field.
- Click “**Log In**” for system access.

Logging Into EIV using WASS

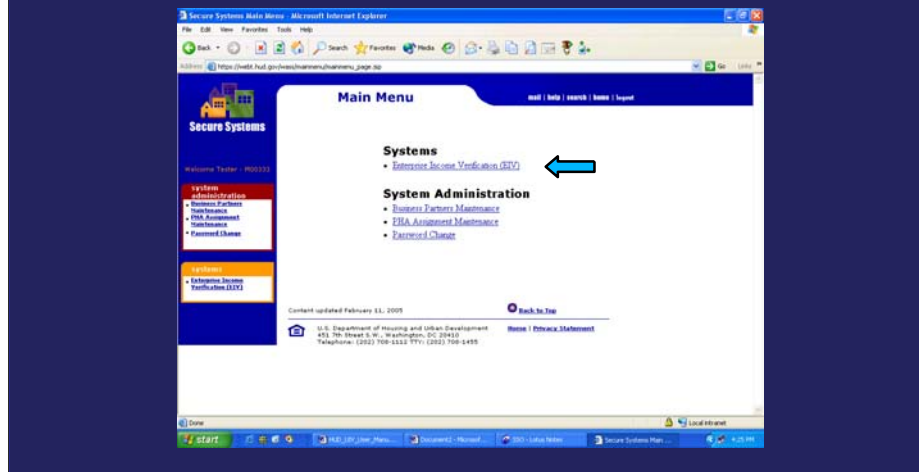
After reading the **Legal Warning**, click the “**Continue**” button.



On the next screen, after reading the **Legal Warning** and agreeing to system, please click the “**Continue**” button. The legal notice on this screen is not mere verbage: Users must agree to respect the security of the personal information that may be accessed in EIV and understand that misuse of the information can subject them to legal penalties.

Logging Into EIV using WASS

Click on Enterprise Income Verification (EIV) link to log into EIV.



Once you have agreed to the terms of use for the system and clicked on the "Continue" button, you will be presented with the following screen. When you reach this screen, click on link to EIV system from either the "Main Menu" or from the link on the left side of the page under the "systems" heading.

Although this screen shows EIV as the only system available, the systems listed will reflect the systems to which the user has rights. In addition, all EIV users will see a listing for PIC. Rights within both EIV and PIC are determined by the roles that have been assigned to the user within the applications.

Idle Time

- EIV system server times out when idle for 20 minutes. The screen does not update, but when you attempt to take an action in EIV after the timeout, you will be re-directed to the EIV Log On page.

Logging Out of EIV

- Click on the "Log Off" link on the upper left corner of screen.
- Note: This logs a user out of EIV, not out of WASS.



Because of the manner in which WASS and EIV interact, there is a two-step process to logging out of the system.

To Get out of the system, click on the "Log Off" link on the upper left corner of page. This first log off only logs a user out of EIV, but the user remains logged into WASS.

Logging Out of WASS

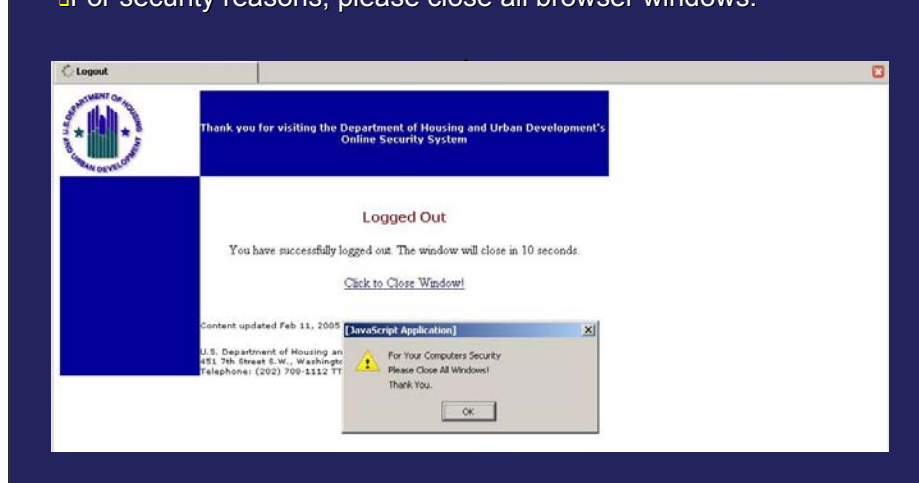
If you do not need to access another WASS-enabled system, please click the "**logout**" link in the upper right corner of page.



If you do not need to access another WASS-enabled system, please click the "**logout**" link in the upper right corner of page. If you do not do so and then leave the PC unattended, merely for a few minutes to go down the hall or to talk to someone, there is a risk of a security breach because it is not necessary to enter a password from this point for someone to sit at your desk and use your rights to access EIV or PIC or other WASS-enabled systems. Both PIC and EIV monitor access to sensitive data. That log will show your id.

Logging Out of WASS

- Once logged out of WASS, users will be greeted with this page.
- For security reasons, please close all browser windows.



After you have logged out of WASS, you will be greeted with this page and a "pop-up" dialogue reminding you to close the window. For security reasons, be certain to close all browser windows.

The WASS Single Sign On will time out when user session is idle for 30 minutes. User is then redirected to the Main logon Page. The EIV system will log you out of the system after 20 minutes of inactivity.