

North Pacific Fishery Management Council's alternatives for the 2012 Steller Sea Lion Mitigation Measures EIS.

The North Pacific Fishery Management Council forwards the following alternatives, modified from the Steller Sea Lion Mitigation Committee (SSLMC) recommended alternatives for evaluation in the 2012 Steller Sea Lion Mitigation Measures EIS.

Alternative 1

Atka mackerel

The "platoon" system is replaced by one or more cooperatives.

543

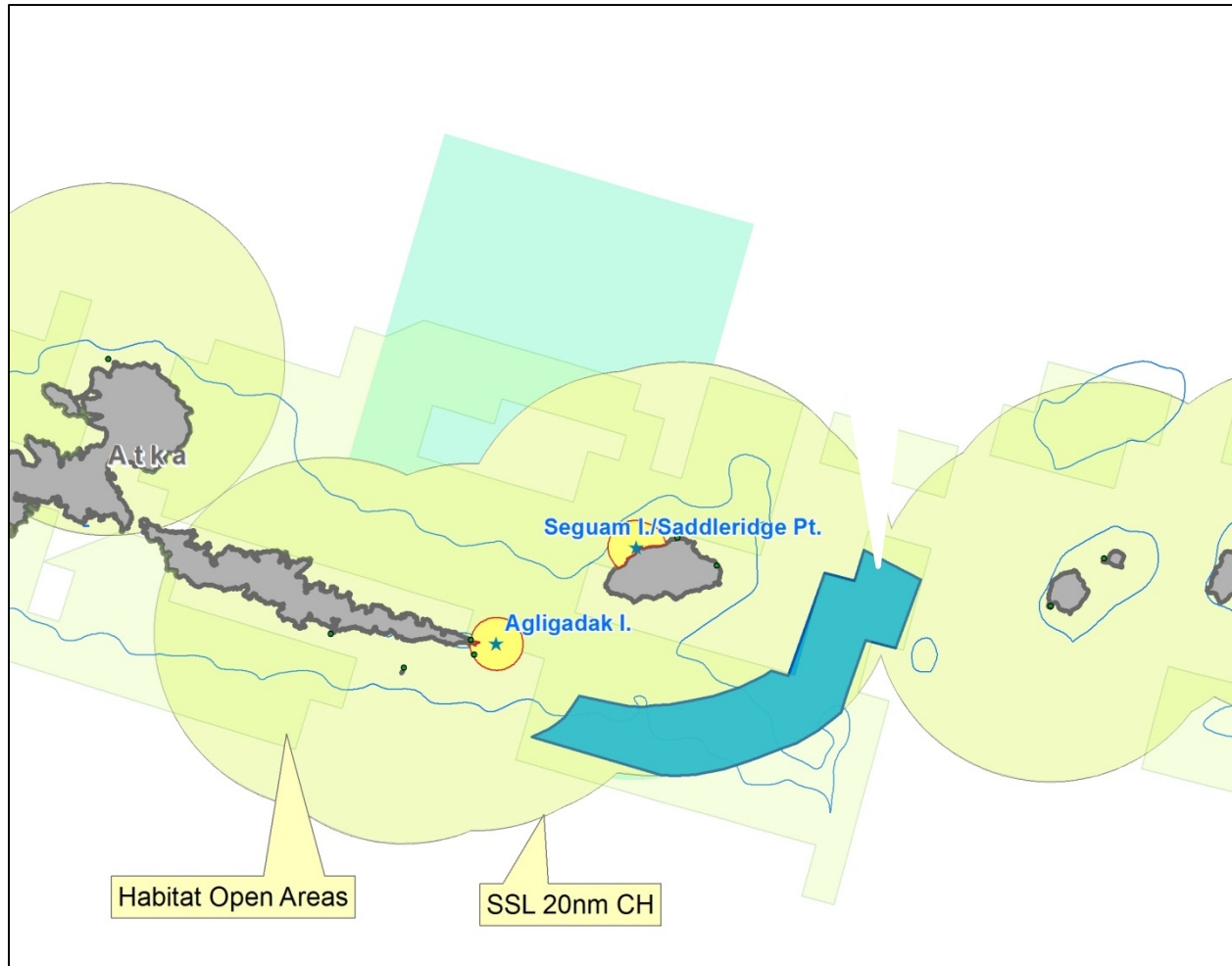
- No fishing inside Critical Habitat
- Open area outside of Critical Habitat east of 174.5° East longitude
- TAC set at 65% of ABC
 - Suboption: TAC set at 50% of ABC
 - Suboption: TAC set at 40% of ABC
- A season : January 20 – June 10
- B season: June 10 – December 31
- Allow rollover between seasons, with no limit on rollover
- Allow MRA when directed fishing for Atka mackerel is closed or in areas where directed fishing for Atka mackerel is prohibited

542

- Apply 2010 SSL closures around rookeries and haulouts (0-10 nm)
- No fishing inside Critical Habitat from 178° East longitude to 180°, and from 178° West longitude to 177° West longitude
 - Alternative: Bering Sea trawl limited access: no fishing inside Critical Habitat
- TAC set at 65% of ABC
- Catch limit inside Critical Habitat established, based on most recent estimates of local biomass (e.g., FIT studies), to maintain harvest \leq 5% of local abundance, but not to exceed 50% of TAC
- A season: January 20 – June 10
- B season June 10 – December 31
- Allow rollover between seasons, all rollover amount to be fished outside CH only
- Limits apply to all sectors

541

- Open a portion of CH area between 12 and 20 nm southeast of Seguam (Map 1-1)
- Bering Sea trawl limited access : no fishing inside CH
- Harvest inside CH limited to \leq 50% of area 541 TAC
- A season: January 20 – June 10
- B season : June 10 – December 31
- Allow rollover between seasons, all rollover amount to be fished outside CH only
- Modify MRA regulations in the Bering Sea portion of 541 to calculate MRA on an offload-to-offload basis, limited to Amendment 80 vessels and CDQ entities



Map 1-1. Seguam Island open area 12-20 nm from Seguam Island SSL site.

Pacific cod

Catch limit in Aleutian Islands is that portion of the Pacific cod stock(s) in the Aleutian Islands, as identified by stock assessment, split between the Aleutian Islands management areas (543, 542, 541) by the 4-survey rolling average of cod occurrence (e.g., for 2013 25% in 543, 75% in 541/542).

543

- Catch limit catch is the AI portion of Pacific cod stock multiplied by the 4-survey biomass proportion for 543

Option 1: Limit to HAL CP and Trawl CP (No Mothership participation)

- Catch limit subdivided between HAL CP and Trawl CP based on ratio of 2006 – 2010 (most recent years before 2011 IFR) catch
- Open CH outside 6 nm from SSL sites for HAL CP
- Open CH outside of 10 nm from 173° East longitude and 174.5° East longitude for Trawl CP
- Seasons
 - HAL: January 1 – November 1
 - Trawl: Jan 20 – April 30
- No more than 2 HAL CP vessels and 2 Trawl CP vessels at one time in the directed fishery

Option 2: Include Mothership participation

- Catch limit subdivided by HAL CP and Trawl CP based on ratio of 2006 – 2010 catch
- Open CH outside of 6 nm for HAL CP
- Open CH outside of 10 nm from 173° East longitude and 174.5° East longitude
- Seasons
 - HAL: January 1 – November 1
 - Trawl: January 20 – April 30
- No more than 2 HAL CP vessels and 2 Trawl CP vessels at one time in the directed fishery

542/541

Catch limit in area 542/541 is limited to the AI portion of the BSAI Pacific cod stock(s), as identified by stock assessment, minus the State waters GHJ and minus the limit for area 543.

Catch limit for Fixed Gear CP, Trawl CP, and Mothership (CV delivering to mothership processor) is 2006 – 2010 history expressed as a ratio of the total catch in 541 and 542. Catcher Vessels delivering to shoreside and stationary floating processors subject to area 541/542 limit.

- Open Critical Habitat 0-20 nm at haulouts for fixed gear
- Open Critical Habitat 3-20 nm at rookeries for fixed gear
- Open Critical Habitat east of 178° West longitude to 174° West longitude for trawl gear
 - Outside 3 nm from haulouts
 - Outside 10 nm from rookeries
- Seasons
 - Fixed Gear: January 1 – November 1
 - Trawl CV: January 20 – November 1
 - Trawl CP: January 20 – December 31

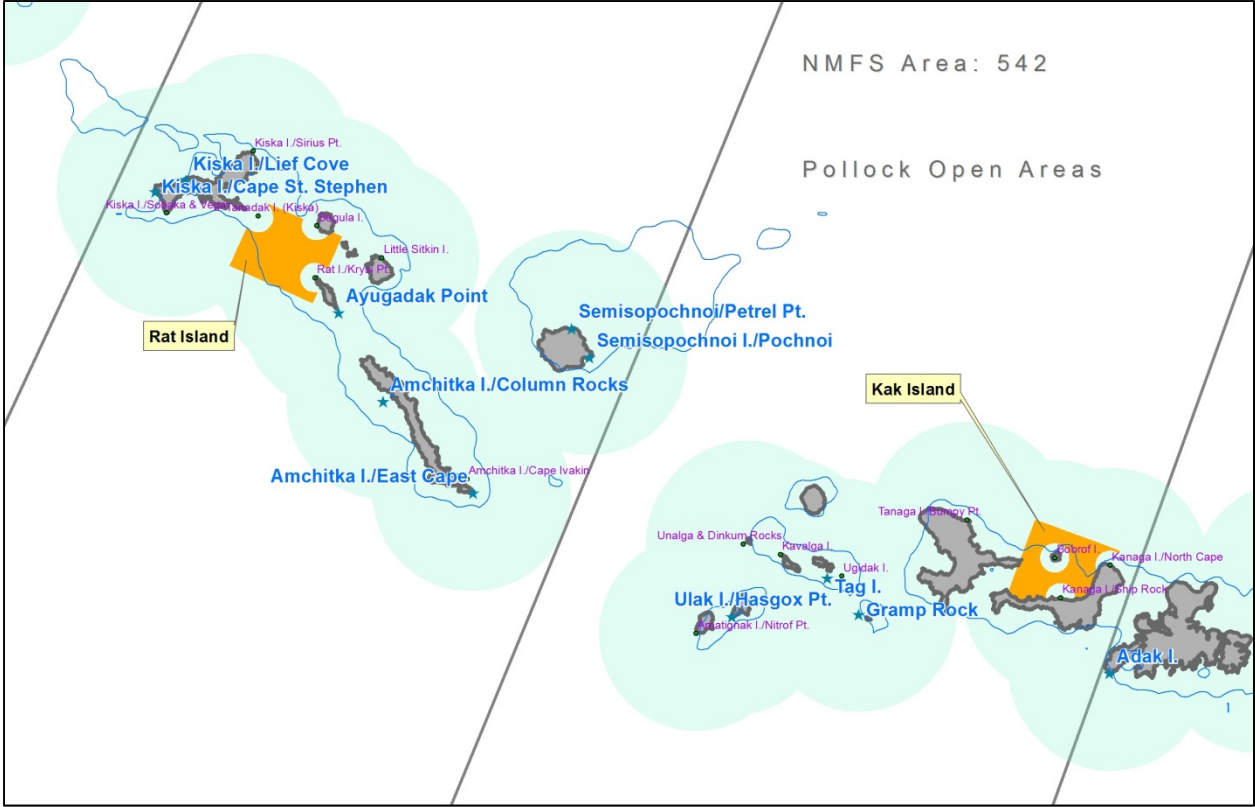
Walleye pollock

543

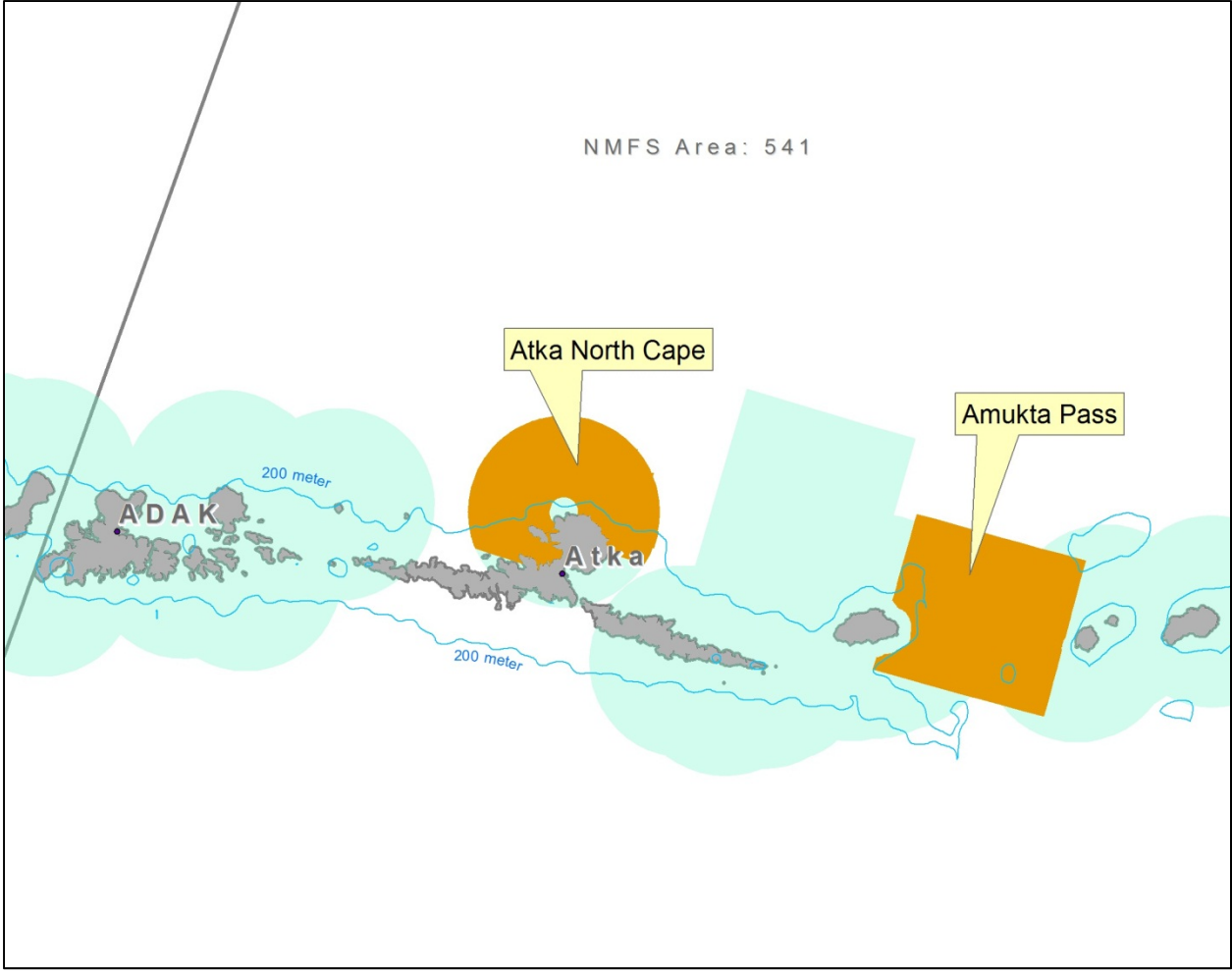
- Prohibit directed fishing for walleye pollock

542/541

- Apportion ABC between 541 and 542 based on the best estimate of total AI biomass ratio using the same methods as applied to Atka mackerel ABC, while allowing TAC to be harvested in any ration within the limits of each area ABC.
- Retain A-season catch limit of 40% of ABC
- Catch limit in 541 or 542 cannot exceed corresponding ratio of ABC from survey biomass
- Open portion of Critical Habitat west of 178° West longitude to pelagic fishing outside of 3 nm from Krysi Pt. (Hawadax Island), Tanadak, Segula, and outside 10 nm from Little Sitkin and Ayugudak haulouts (Map 1-2)
- Open Kanaga Sound east of 178° West longitude to pelagic fishing outside 3 nm from haulouts
 - Alternative: limit to vessels < 60 feet (Map 1-2)
- Open portion of Critical Habitat to pelagic fishing around a number of haulouts at Atka North Cape, Amutka Pass / Seguam-southside (Map 1-3)



Map 1-2. Area 542 open areas for walleye pollock under Alternative 1.



Map 1-3. Area 541 open areas for walleye pollock under Alternative 1.

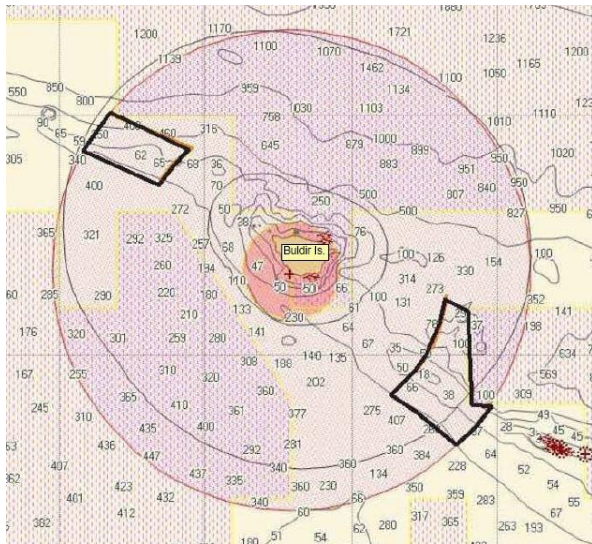
Alternative 2

Atka mackerel

The “platoon” system is replaced by one or more cooperatives.

543

- Open Critical Habitat with the same restrictions that were in place in 2010 during the HLA fishery
 - Alternative: open outside CH
- Open portions of Critical Habitat from 10-15 nm at Buldir Island (Map2-1)
 - Alternative: Close outside CH west of 174.5° E.
- A-season Jan 20 – Jun 10; B-season Jun 10 – Dec 31
 - Alternative: B-season Jun 10 – Nov 1
- Allow rollover between seasons with no limit on rollovers



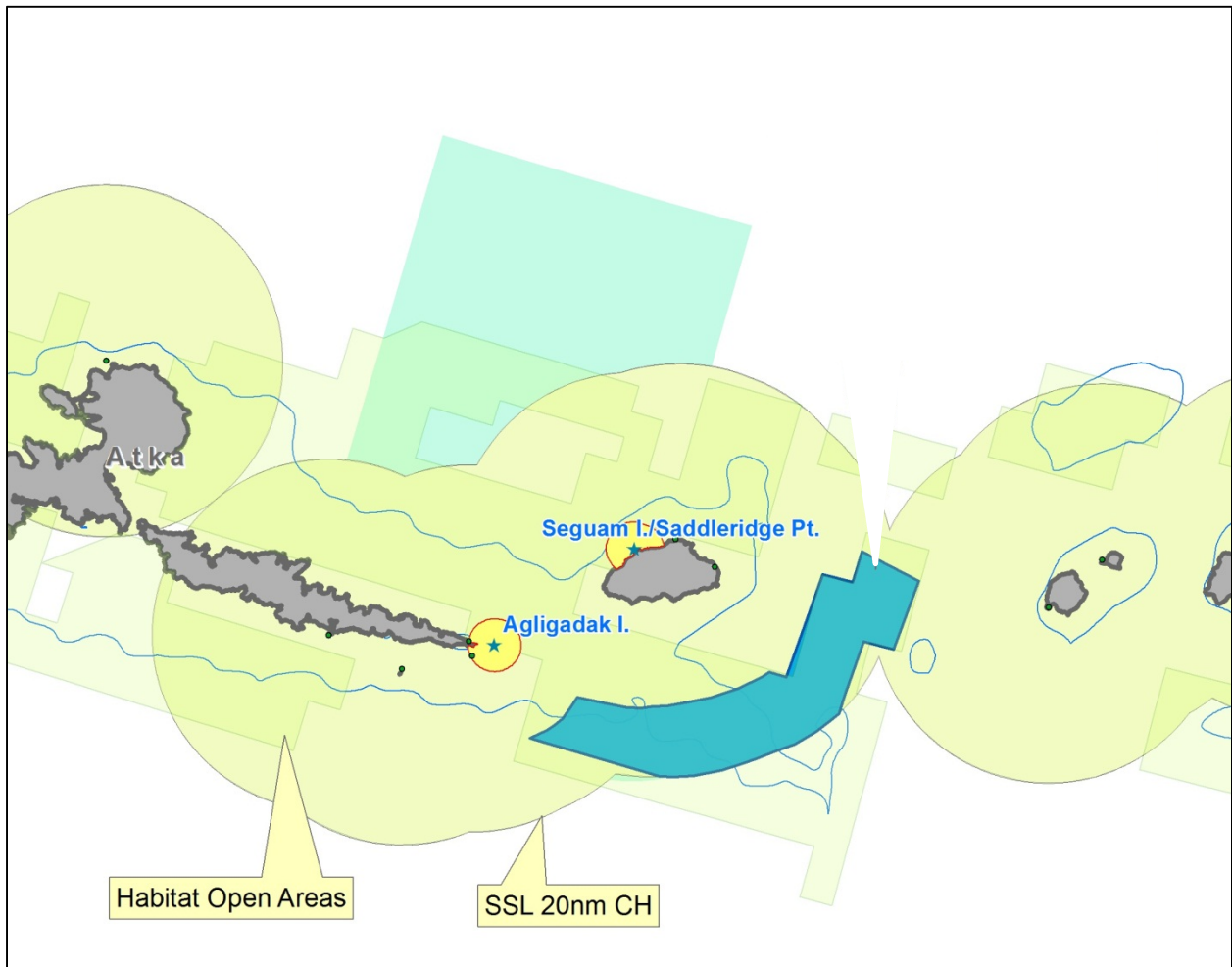
Map 2-1. Buldir Island open areas under Alternative 2.

542

- Open Critical Habitat with the same restrictions as in place in 2010 during the HLA fishery, except maintain closure around Amchitka Island (178°E – 180°)
- A season January 20 – June 10
- B-season June 10 – December 31
 - Alternative: B-season June 10 – November 1
- Allow rollover between seasons with no limit on rollovers

541

- Open a portion of CH 10-20 nm at Seguam (Map 2-2) with no limit to catch inside Critical Habitat
- A season January 20 – June 10
- B season June 10 – December 31
 - Alternative: B-season June 10 – November 1
- Allow rollover between seasons with no limit on rollovers



Map 2-2. Seguan Island open area for Atka mackerel fishing.

Pacific cod

Catch limit in Aleutian Islands is that portion of the Pacific cod stock(s) in the Aleutian Islands, as identified by stock assessment, split between the Aleutian Islands management areas (543, 542, 541) by the 4-survey rolling average of cod occurrence (e.g., for 2013 25% in 543, 75% in 541/542).

543

- Catch limit in area 543 is the AI portion of Pacific cod stock(s), as identified by the stock assessment, multiplied by the 4-survey biomass proportion for 543 (e.g., 25% for 2013)
- Catch limit subdivided by HAL CP and Trawl CP based on ratio of 2006-2010 history expressed as a ratio of the total for both HAL CP, Trawl CP
- Open Critical Habitat with same restrictions as 2010 management for HAL CP (absent the HLA P. cod restrictions)
- Open Critical Habitat with same restrictions as 2010 Management for Trawl CP (absent the HLA P. cod restrictions)
- Seasons
 - HAL CP same as 2010 Management

- Trawl CP same as 2010 Management
- No more than 2 HAL CP vessels and 2 TRW CP vessels at one time in directed fishery

542/541

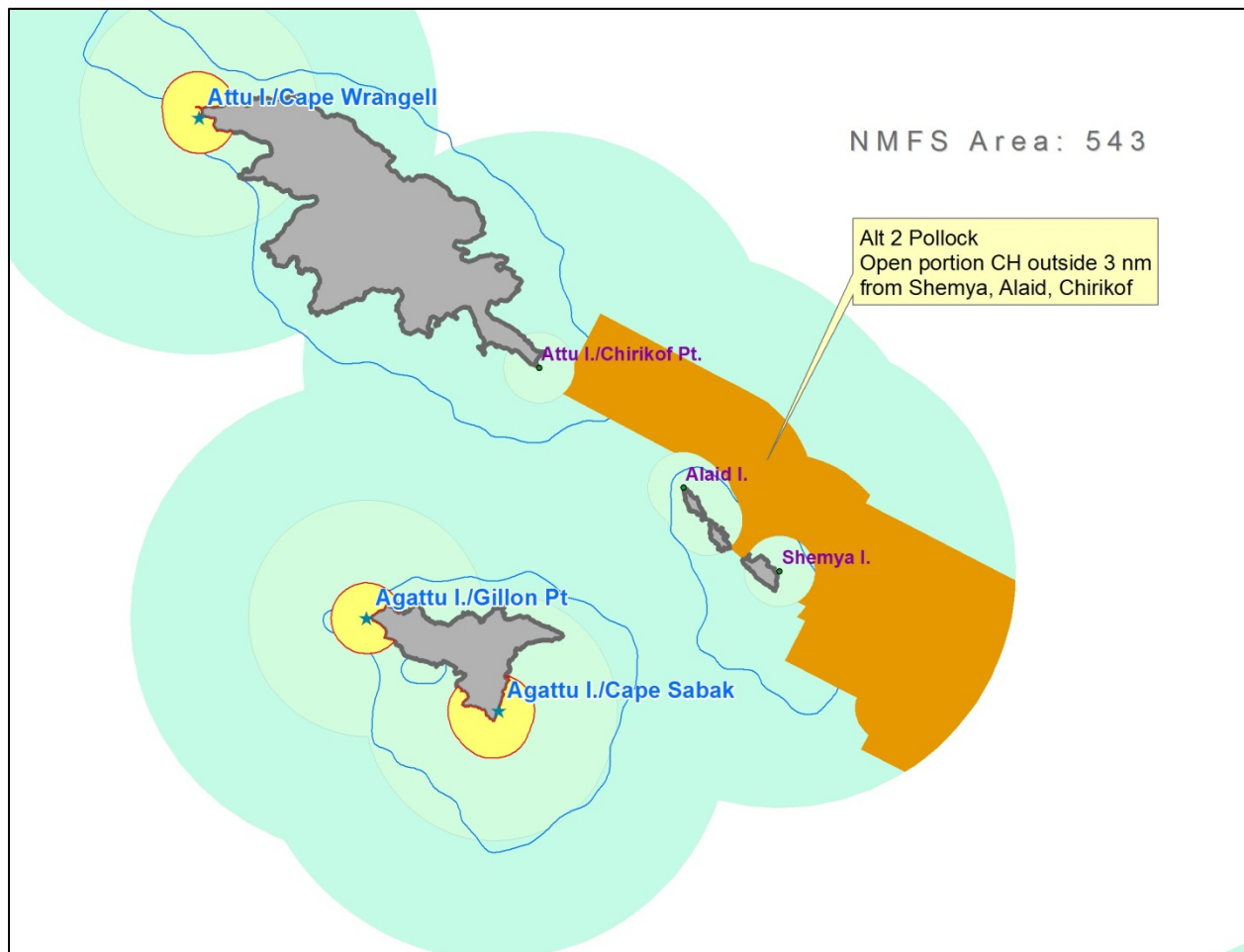
Pacific cod measures under Alternative 2 for areas 542/541 are the same as Alternative 1

Walleye pollock

- Apportion ABC between 543, 541, and 542 based on the best estimate of total AI biomass ratio using the same methods as applied to Atka mackerel ABC, while allowing TAC to be harvested in any ratio within the limits of each area ABC
- Retain catch limit of 40% of ABC harvested in A season

543

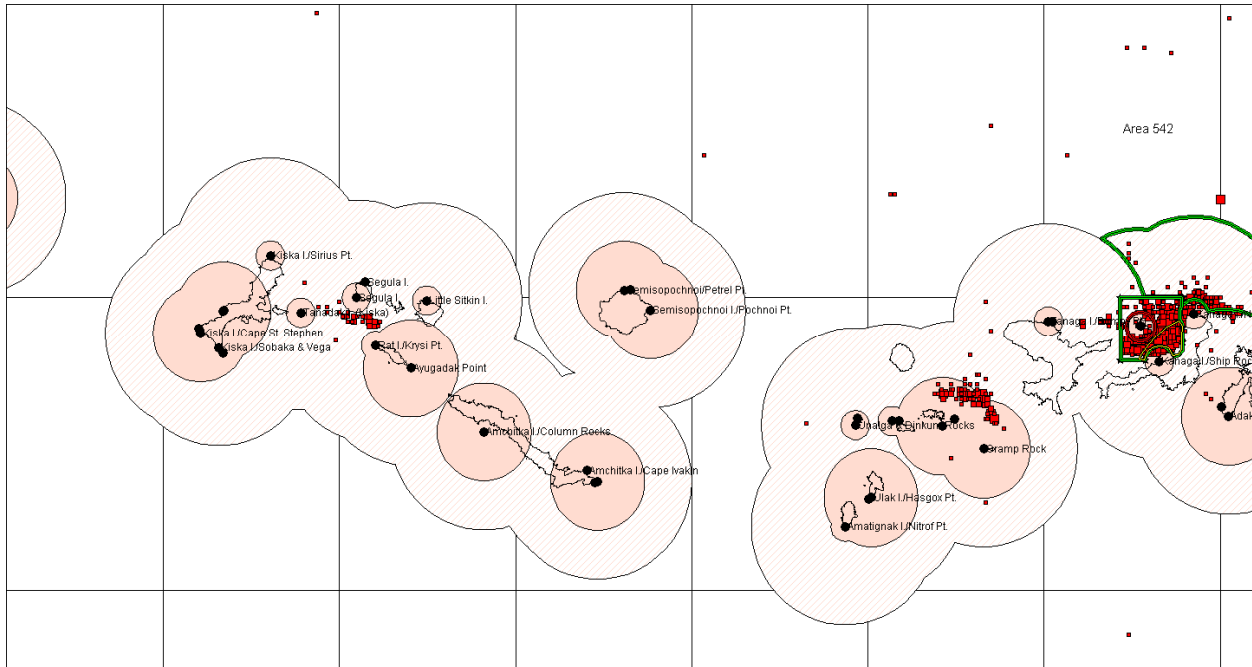
- Open a portion of Critical Habitat outside 3 nm from Shemya, Alaid, and Chirikof haulouts to pelagic trawling (Map 2-3)



Map 2-3. Shemya, Alaid, Chirikof open area.

542

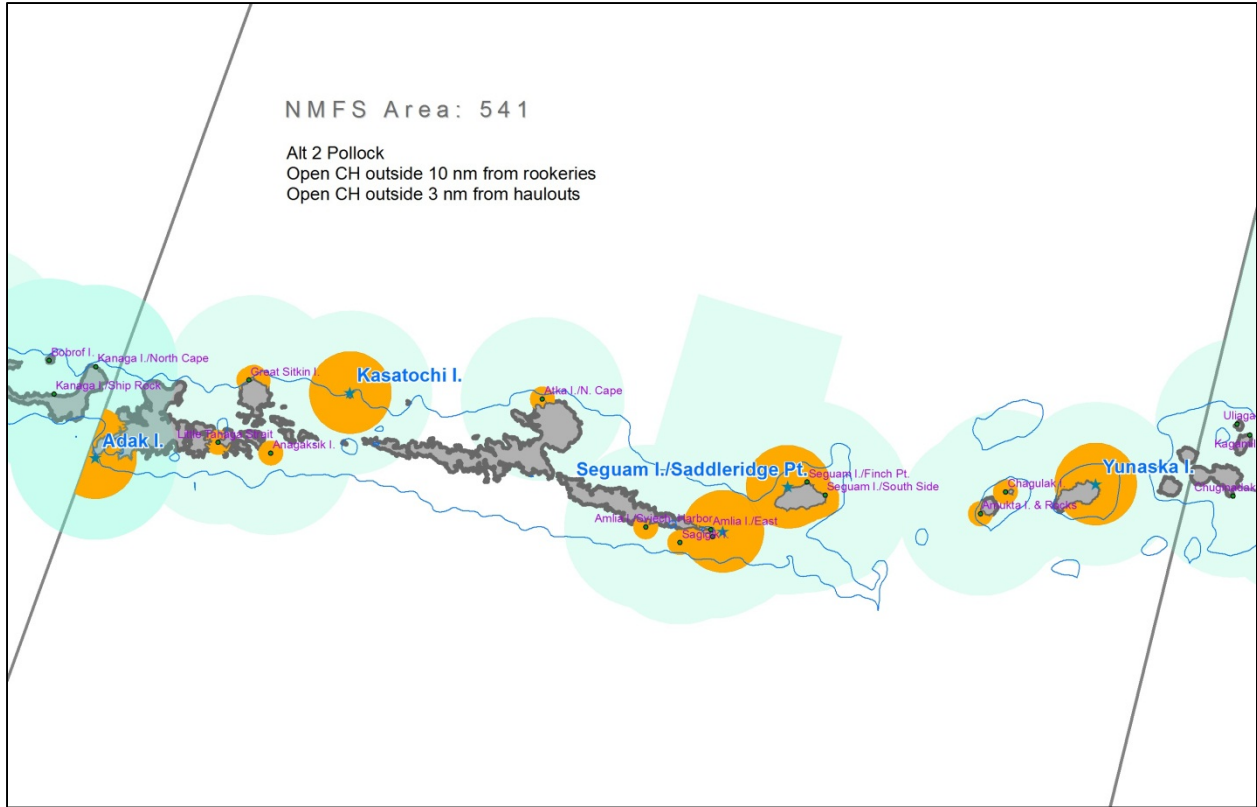
- Open portion of Critical Habitat identified in Alternative 1
- Open Critical Habitat outside of 10 nm of listed haulouts and rookeries west of 178° West longitude (Map 2-4)
- Open Critical Habitat outside of 10 nm from listed rookeries and 3 nm of listed haulouts east of 178° West longitude (Map 2-4)



Map 2-4. Proposed 542 open areas. Three and ten nm closures around haulouts and rookeries are shown in pink, proposed open areas are shown with diagonal hashmarks.

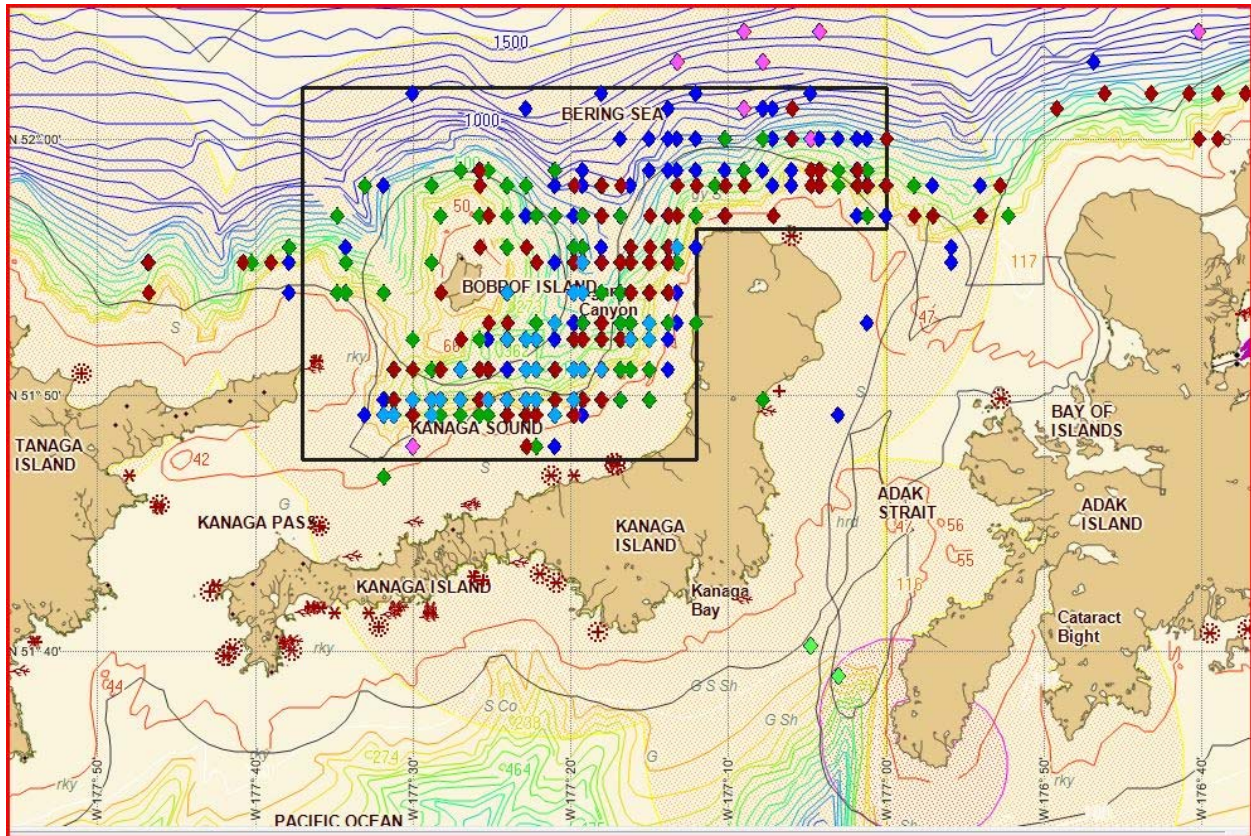
541

- Open portion of Critical Habitat identified in Alternative 1
- Open Critical Habitat to pelagic trawling outside of 10 nm from rookeries and 3 nm from haulouts in area 541 (Map 2-5)



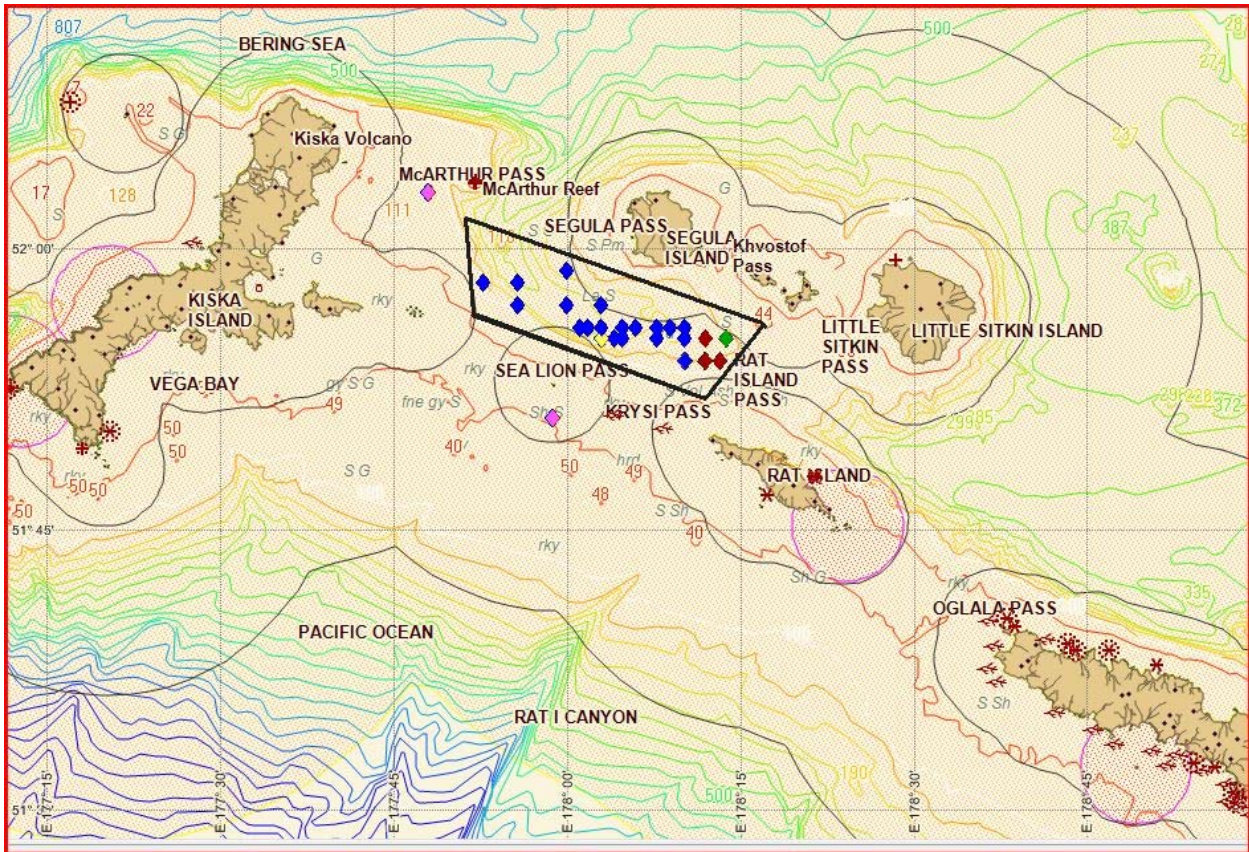
Map 2-5. Proposed 541 open areas. Please note that open areas at Atka North Cape and Seguam Pass, as identified in Alternative 1, are not shown on this map, but are intended to be included in Alternative 2.

Following are maps with open areas for walleye pollock based on specific coordinates. A list of coordinates follows each map.



Kanaga Sound Open Area. Area 542, Alternative 1 and 2.

- Kanaga 542 box:
- N52 02/W177 37
- N52 02/W177 00
- N51 56.5/W177 00
- N51 56.5/W177 12
- N51 47.5/W177 12
- N51 47.5/W177 37
- N52 02/W177 37



Rat Islands open area. Area 542, Alternative 1 and 2

Rat Islands 542 box:

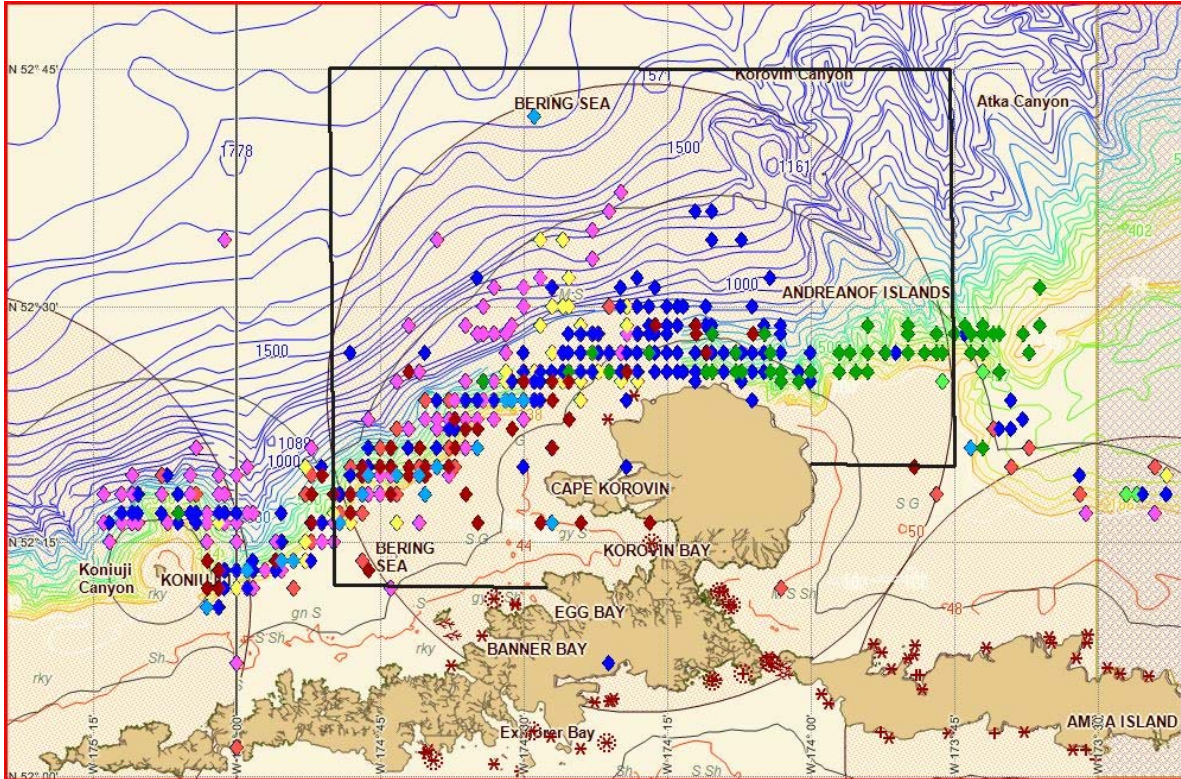
N52 03/E177 51

N51 56/E178 17

N51 52/E178 12

N51 56.5/E177 51.5

N52 03/E177 51



Atka North Cape Open Area. Area 541, Alternative 1 and 2.

Atka/N. Cape 541 box:

N52 12/W174 28

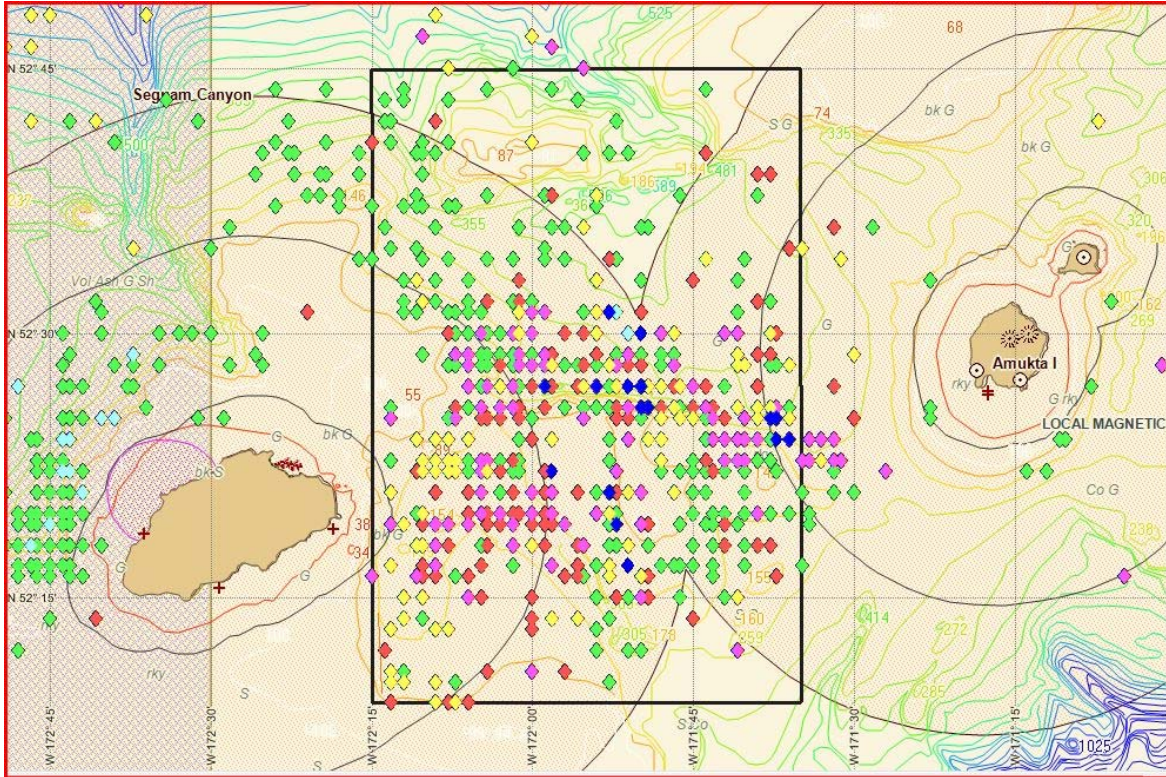
N52 12/W174 51

N52 45/W174 51

N52 45/W173 45

N52 20/W173 45

N52 20/W174 00



Amukta Pass Open Area. Area 541, Alternative 1 and 2.

Amukta Pass 541 box:

- N52 45/W172 15
- N52 45/W171 35
- N52 09/W171 35
- N52 09/W172 15
- N52 45/W172 15

