

Annual
Site Environmental Report
Calendar Year 2003

Ames Laboratory
Iowa State University
Ames, Iowa 50011-3400

Prepared for the
U.S. Department of Energy
Under Contract No. W-7405-Eng-82

Table of Contents

	Page
1.0 EXECUTIVE SUMMARY	1
Feedback Form	2
2.0 INTRODUCTION	3
2.1 Site Description	3
2.2 Organization and Administration	4
Figure 2.2-1 Organizational Chart	5
2.3 Mission	6
2.4 Purpose of Site Environmental Report	6
3.0 COMPLIANCE SUMMARY	6
3.1 Calendar Year 2003 Compliance Status	6
3.2 Comprehensive Environmental Response, Compensation and Liability Act (CERCLA)	6
3.3 Resource Conservation and Recovery Act (RCRA)	7
3.4 Federal Facilities Compliance Act (FFCA)	7
3.5 National Environmental Policy Act (NEPA)	8
3.6 Clean Air Act (CAA) and National Emissions Standards for Hazardous Air Pollutants (NESHAPS)	8
3.7 Clean Water Act (CWA)	8
3.8 Safe Drinking Water Act (SDWA)	9
Table 3.8-1 Drinking Fountain Analysis	9
3.9 Superfund Amendments and Reauthorization Act (SARA) Title III and Iowa Administrative Code (IAC), Rule 567, Chapter 131, Spill Response	9
Table 3.9-1 Status of EPCRA Reporting	10
3.10 Toxic Substances Control Act (TSCA)	10
3.11 Federal Insecticides, Fungicide and Rodenticide Act (FIFRA)	10
3.12 Endangered Species Act (ESA)	10
3.13 National Historic Preservation Act (NHPA)	10
3.14 Migratory Bird Treaty Act	11
3.15 Executive Order 11988, "Floodplain Management"	11
3.16 Executive Order 11990, "Protection of Wetlands"	11
3.17 Summary of Permits	11
Table 3.17-1 DOE Air Emissions Source Construction Permit Numbers	11
Table 3.17-2 DOE RCRA Generator Identification Numbers	11
4.0 ENVIRONMENTAL PROGRAM	12
4.1 Pollution Awareness, Waste Minimization and Recycling Programs	12
4.2 Performance Measures	12

5.0 ENVIRONMENTAL RADIOLOGICAL PROGRAM	13
5.1 DOE Order 5400.5, “Radiation Protection of the Public and the Environment”	13
5.2 DOE Order 435.1, “Radioactive Waste Management”	13
5.3 Property Release	13
5.4 Radiation Emissions and Doses	13
5.5 Unplanned Releases	14
5.6 Environmental Monitoring	14
5.7 Areas of Concern	14
5.7.1 Chemical Disposal Site (CDS)	14
Table 5.7-1 CDS Groundwater Analysis	16
5.7.2 Inactive Waste Sites (IWS)	17
5.7.3 Former Iowa State College Dump Site	17
5.7.4 Fire Service Institute Training Area	17
5.7.5 Waste Handling Facility (WHF)	18
6.0 ENVIRONMENTAL NON-RADIOLOGICAL PROGRAM	19
6.1 National Pollutant Discharge Elimination System (NPDES) Data	19
6.2 Other Emissions Monitoring	19
6.3 Continuous Release Reporting	19
6.4 Environmental Occurrences	
6.5 SARA Title III Reporting Requirements	19
7.0 GROUNDWATER MONITORING AND PROTECTION	20
8.0 QUALITY ASSURANCE PROGRAMS	20
9.0 REFERENCES	22
10.0 LIST OF ACRONYMS	24
11.0 REPORT DISTRIBUTION	27
APPENDIX A (Chemical Disposal Site (CDS) Correspondences)	32
1) Letter to IDPH requesting release of the CDS, September 30, 1998.	
2) Letter from IDPH granting “unrestricted” release of the CDS, October 15, 1998.	
3) Letter from IDPH to Edward J. Stanek, II, Ph.D., status of CDS, October 16, 1998.	
4) Letter from ISU to DOE-Ames Group, October 22, 1998.	

APPENDIX B (Air Permit Correspondences)	38
1) Letter from IDNR exempting laboratory fume hoods from permitting, July 18, 1994.	
2) Letter from Jacobs Engineering Group Inc. exempting graphics paint spray booth from permitting, July 16, 1997.	
3) Letter from IDNR exempting graphite lathe hood exhaust from permitting, February 6, 1998.	
4) U.S. Department of Energy Air Emissions Annual Report, Calendar Year 2003.	
APPENDIX C (Inactive Waste Site Correspondences)	44
1) Letter from IDPH, Closure of nine waste sites, January 11, 1996.	
2) Letter from DOE-CH, Regarding the Iowa State College Dump Site, April 20, 1999.	
3) Letter from IDPH, Closure of the Former Iowa State College Dump Site, September 17, 2001.	
4) Letter from IDPH, Closure of the Fire Service Institute Training Area, February 26, 2002.	
APPENDIX D (EPA Correspondences)	50
1) EPA letter (NOV's), April 6, 1999.	
2) EPA e-mail status of CDS and WHF EPA ID Numbers, July 8, 2003.	

1.0 EXECUTIVE SUMMARY

This report summarizes the environmental status of Ames Laboratory for calendar year 2003. It includes descriptions of the Laboratory site, its mission, the status of its compliance with applicable environmental regulations, its planning and activities to maintain compliance, and a comprehensive review of its environmental protection, surveillance and monitoring activities.

Ames Laboratory is located on the campus of Iowa State University (ISU) and occupies eleven buildings owned by the Department of Energy (DOE). See the Laboratory's Web page at www.external.ameslab.gov for locations and Laboratory overview. The Laboratory also leases space in ISU owned buildings.

In 2003, the Laboratory accumulated and disposed of waste under U.S. Environmental Protection Agency (EPA) issued generator numbers. Ames Laboratory submitted a Proposed Site Treatment Plan (STP) to EPA in December 1995. This plan complied with the Federal Facilities Compliance Act (FFCA). EPA approved it in January 1996. The consent agreement/consent order was issued in February 1996. All waste in the STP has been disposed. Future waste, if generated, will be handled accordingly to all applicable EPA, State, Local and DOE Orders.

The most recent RCRA inspection came from EPA Region VII in January 1999. The Laboratory received a Notice of Violation (NOV), containing five citations. There have been no inspections since then. The citations were minor and were corrected by the Laboratory within the time allocated by the EPA. See correspondence in Appendix D.

The Laboratory was in compliance with all applicable Federal, State, Local and DOE regulations and orders in 2003.

There were no radiological air emissions or exposures to the general public due to Laboratory activities in 2003.

Pollution awareness, waste minimization and recycling programs were implemented in 1990 and updated in 1999. Included in these efforts are battery and CRT recycling, waste white paper and green computer paper-recycling. Ames Laboratory also continues to recycle/reuse salvageable metal, used oil, styrofoam peanuts, fluorescent lamps and telephone books. .

Ames Laboratory reported to DOE-CH, through the Laboratory's Self Assessment Report, on its Affirmative Procurement Performance Measure. A performance level of "outstanding " was achieved in 2003.

The Laboratory underwent a voluntary Environmental Management Review (EMR) in 2003. Members of the Environmental Protection Agency (EPA) Region VII and Iowa Department of Natural Resources (IDNR) conducted the EMR in November. The EMR was conducted as part of the process for developing and implementing an Environmental Management System (EMS) at the Laboratory. The final EMR report was received on June 19, 2003. Most of the recommendations will be or are in the process on being implemented to fulfill the EMS requirements for the ISO 14001:1996 standard.

2003 Ames Laboratory Site Environmental Report Feedback Form

This feedback form is provided to solicit public input on the development and improvement of future SER's. Public input is encouraged and appreciated. Remove and copy as needed; attach additional pages as needed or send comments to kayser@ameslab.gov.

Return to: Ames Laboratory
Environment, Safety, Health & Assurance
G40 TASF, Iowa State University
Ames, IA 50011-3400
ATTN: Dan Kayser

1. What prompted your interest in environmental activities at Ames Laboratory?
2. In what ways can this report document and/or format be improved?
3. Do you have any questions on specific items or issues in this report?
4. Do you have any other comments?

2.0 INTRODUCTION

2.1 Site Description

Ames Laboratory is a U.S. DOE Facility located on the campus of Iowa State University (ISU) at Ames, Iowa. See the Laboratory's Web page at www.external.ameslab.gov for locations and Laboratory overview. Ames is a government owned contractor operated (GOCO) facility. ISU is the contractor. The Technical and Administrative Support Facility (TASF) houses most of the Laboratory management offices. The buildings owned by the Department of Energy (DOE) are listed below.

<u>Building</u>	<u>Gross Square Feet</u>
Spedding Hall	107,630
Metals Development Building	69,663
Wilhelm Hall	56,541
TASF	46,991
Campus Warehouse Building	16,506
Mechanical Maintenance Building	8,540
Paint and Air Conditioning Shops Building	4,954
Construction Storage Shed	4,398
Storage Shed	2,100
Records Storage Building	1,679
Storage Shed	500
<hr/>	<hr/>
Total DOE Owned	327,102

In addition to the buildings owned by the DOE, Ames Laboratory leased a net total of 33,664 square feet of space from ISU in 2003. In 1987 the DOE transferred ownership of the buildings it owned at the Applied Science Complex (ASC) site to ISU. Ames Laboratory retains beneficial use of the Waste Handling Facility (WHF) and the High Pressure Test Cell at the ASC through February 28, 2060. The WHF housed the Alpha Facility, a laboratory that was designed to use small amounts of radionuclides. No research work was done in the Alpha Facility in 2003. The WHF was no further use and has become a maintenance burden over the years. The WHF is slated to be demolished in 2005 (see section 5.7.5). The ASC is located one-mile northwest of the ISU main campus. See WebPages at www.external.ameslab.gov/common/amesmap.html. Click on Iowa State University Campus Map.

The City of Ames, Iowa surrounds the ISU main campus. In 2003 the approximate population of Ames was 50,731, which includes the ISU student population of approximately 25,400. The City of Ames is located in Story County, which has a population of 79,981.

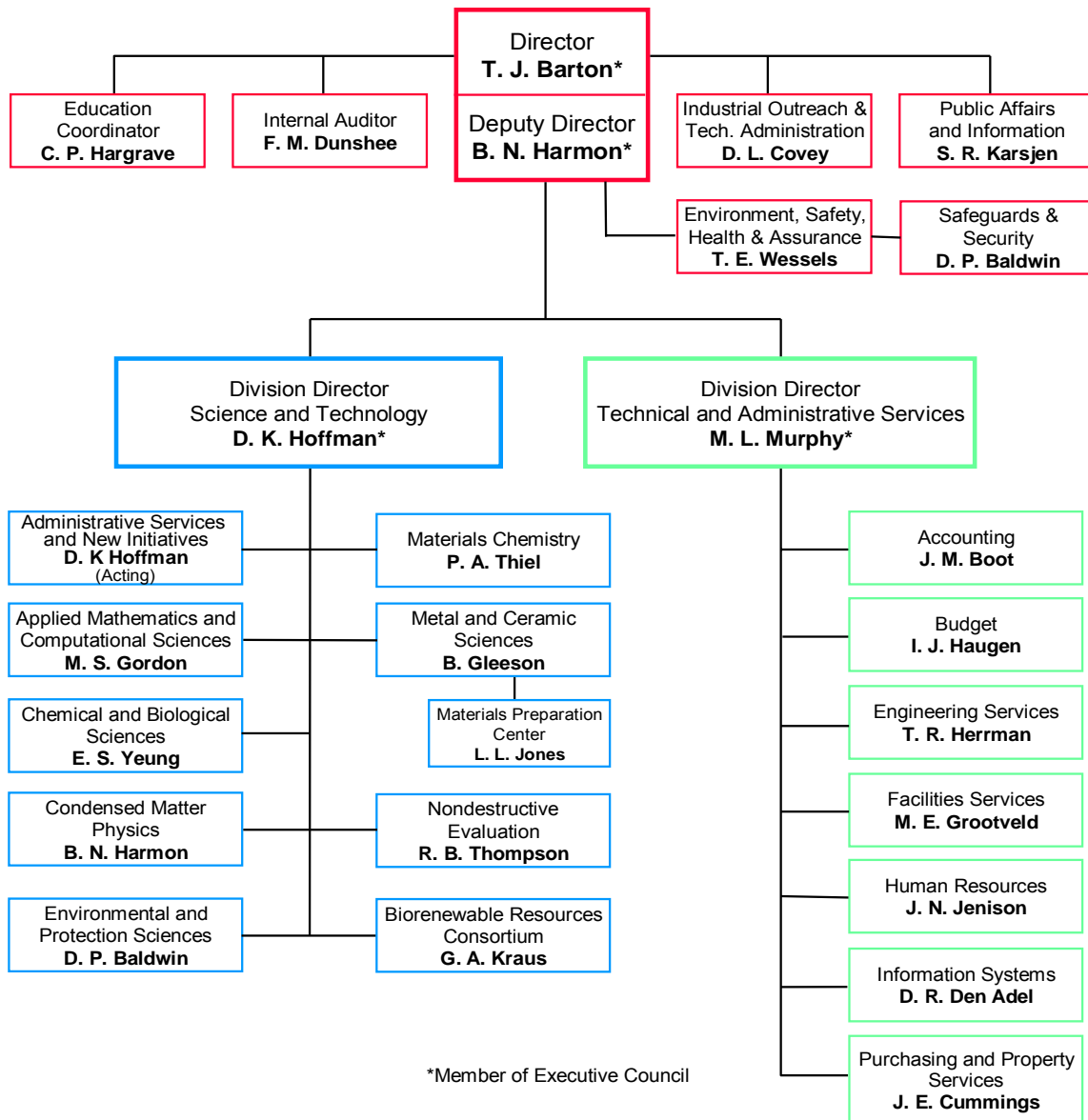
The climate is temperate continental, and subject to wide temperature and precipitation ranges throughout the year. Mean monthly temperatures vary from a low of negative 7.5 degrees Celsius (18.5°F) in January to a high of 23.8 degrees Celsius (74.8°F) in July. Average rainfall equivalent precipitation varies from 1.8 centimeters (0.7 inches) in January to 13.7 centimeters (5.4 inches) in June.

The region is gently rolling with a slight overall gradient to the southeast. Under the shallow topsoil, the soils are glacial till with a depth of approximately 19.8 meters (65 feet). This material is underlain by predominantly limestone bedrock. In the central campus area, the depth to first groundwater is approximately 3.0 meters (10 feet). At the ASC site depth to groundwater averages approximately 5.5 meters (18 feet). Surface run-offs from both areas go into the Squaw Creek, a tributary of the South Skunk River. The streams have a combined average daily flow of approximately 644 million liters (170 million gallons).

2.2 Organization and Administration

Iowa State University operates Ames Laboratory for the United States Government under Contract Number W-7405-Eng-82 with the U.S. DOE. The DOE Chicago Operations Office administers the contract. Ames Laboratory is a member of the Institute for Physical Research and Technology (IPRT), an ISU association of research laboratories. In 2003, the Laboratory employed a total of 650 people. 431 full and part time employees and 219 associate (non-payroll) employees. See Organizational Chart Figure 2.2-1.

Ames Laboratory Organization



May 2003

Figure 2.2-1

2.3 Mission

The Laboratory's mission is to conduct fundamental research in the physical, chemical, materials, mathematical sciences and engineering which underlie energy generating, conversion, transmission and storage technologies, environmental improvement, and other technical areas essential to national needs. These efforts will be maintained so as to contribute to the achievement of the Department of Energy's Missions and Goals; more specifically, to increase the general levels of scientific knowledge and capabilities, to prepare engineering and physical sciences students for future scientific endeavours, and to initiate nascent technologies and practical applications arising from our basic scientific programs.

The Laboratory will approach all its operations with the safety and health of all workers as a constant objective and with genuine concern for the environment. Ames Laboratory does not conduct classified research.

2.4 Purpose of Site Environmental Report

The primary purpose of this report is to summarize the performance of Ames Laboratory's environmental programs, present highlights of significant environmental activities, and confirm compliance with environmental regulations and requirements for calendar year 2003. This report is a working requirement of Department of Energy Order 231.1, *Environment, Safety, and Health Reporting*".

3.0 COMPLIANCE SUMMARY

3.1 Calendar Year 2003 Compliance Status

The Laboratory was in compliance with all applicable environmental regulations in 2003.

3.2 Comprehensive Environmental Response, Compensation and Liability Act (CERCLA)

There were no sites regulated under CERCLA.

Proper public comment periods have been observed for former site restoration activities (See section 5.7). The community advisory group (CAG), formed in May 1994, was and is the primary vehicle for public input to these activities. The CAG met with Ames Laboratory and ISU representatives on February 23, 1998, to discuss corrective actions proposed for the Fire Service Institute Training Area (FSITA). The most recent meeting was on June 20, 2001, to discuss the Former Beryllium Workers Medical Surveillance Program. Copies of the Ames Laboratory Beryllium Survey Report were sent to CAG members on August 27, 2001 and a copy of the Review and Assessment of the Former Iowa State College Dump Site report was sent to CAG members on October 17, 2001. There were no meetings or correspondences with CAG members in 2003.

3.3 Resource Conservation and Recovery Act (RCRA)

Ames Laboratory is a Government Owned-Contractor Operated (GOCO) facility. All waste generated by Ames Laboratory under the contract with DOE is DOE waste. In 2003, DOE had one active RCRA site and two inactive sites. See the summary table in section 3.17. Activities associated with the main campus EPA ID number were those of a large quantity generator. In calendar year 2003, 2636 kg of hazardous waste was properly disposed through a contracted vendor. All reporting requirements were met. The Waste Handling Facility (WHF) and the Chemical Disposal Site (CDS) have been designated by EPA as “non-generator” sites. See correspondence in APPENDIX D. The WHF location does not store RCRA hazardous or mixed waste and is slated for demolition in 2005. See section 5.7.5. The CDS waste removal was completed in 1995. See section 5.7.1 and correspondences in APPENDIX A.

The Laboratory’s Biennial Report (aka; *Hazardous Waste Report*) to the EPA for calendar year 2003 was completed and submitted on time in February 2003. The report is required of all large quantity generators and is a record of wastes removed from the facility. The next report is due March 1, 2006.

In 2003 Ames Laboratory maintained its conservative waste disposal policy in which materials that are not regulated by RCRA, yet which might pose or be perceived to pose any kind of a potential hazard are managed as though they are RCRA regulated wastes. The Laboratory disposed wastes at an out of state EPA permitted facility. It is the Laboratory’s practice to have these RCRA regulated wastes incinerated rather than put into a permitted landfill, whenever possible. Incineration ensures the complete destruction of the hazardous constituents and eliminates any potential for members of the public being exposed in the future. There were four shipments of RCRA waste and one shipment of low-level radioactive waste in 2003. No mixed waste was generated or disposed in 2003.

The Laboratory had no underground storage tanks (UST’s) in 2003. The last UST (emergency generator diesel fuel) was removed in August 1995. An aboveground, double walled diesel tank with interstitial leak detection replaced it. The tank did not experience any problems in 2003.

3.4 Federal Facilities Compliance Act (FFCA)

The FFCA is part of 42 USC 6901 and amends a part of RCRA. FFCA requires the preparation of site treatment plans for the handling of **mixed wastes**. EPA approved the Ames Laboratory Site Treatment Plan (STP) in January 1996.

Two waste streams were not included in the final STP because the Laboratory found process treatments that avoided creating mixed waste and therefore avoided the effort and expense of managing mixed waste. 1) Transuranic waste has been managed according to applicable State and Federal Regulations as well as applicable DOE

Orders. Transuranic solutions were neutralized and stabilized in the fall of 2000. The stabilized material (0.25 m³) was sent to Hanford as LLW in 2001. 2) Contaminated lead was eliminated from the STP because in-process treatment prevents it from meeting the definition of mixed waste.

Any newly generated mixed waste will be handled and disposed of accordingly to EPA, State, Local and DOE Orders.

3.5 National Environmental Policy Act (NEPA)

The Laboratory had two categorical exclusion (CX) determination in 2003, which involved facility upgrades. Categorical exclusions are classes of actions that DOE has determined do not individually or cumulatively have a significant effect on the environment and do not require the preparation of either an Environmental Assessment or an Environmental Impact Statement.

3.6 Clean Air Act (CAA) and National Emissions Standards for Hazardous Air Pollutants (NESHAPS)

U.S. EPA Region VII delegated CAA authority to the State of Iowa Department of Natural Resources (IDNR). The DNR issued an official ruling for Ames Laboratory on July 18, 1994 stating that no permitting and no monitoring is required for the Laboratory's fume hoods. The Laboratory maintains two construction air permits that were issued by the IDNR in December of 1996. These are for the paint booth and sand blaster. A graphics paint booth and a graphite lathe are both exempt from permitting. See correspondences in APPENDIX B.

The Laboratory was in compliance with all CAA requirements including the NESHAP regulations for radionuclide emissions from DOE facilities. The Laboratory used only small quantities of chemicals and radionuclide sources (for calibrating equipment), lab bench quantities, for research and development activities in 2003. Any air emissions generated by Ames Laboratory research activities were sporadic and in very small quantities. The Laboratory did not have any air emissions in 2003 that could have exposed the public to radioactivity. See correspondences in APPENDIX B.

3.7 Clean Water Act (CWA)

Ames Laboratory does not have any point sources of effluents requiring National Pollutant Discharge Elimination System (NPDES) permits. The Laboratory discharges all liquid wastes to the ISU sanitary sewer system, which discharges into the City of Ames sanitary sewer system. The City of Ames has an NPDES permit. The City of Ames has an agreement for wastewater pre-treatment with ISU, which includes Ames Laboratory wastewater. Both the City of Ames and the University sampled ISU wastewater effluent in 2002 as part of this agreement. The Laboratory discharged approximately 20,237,940 liters (5,346,880 gallons) of wastewater to the ISU sanitary sewer system in 2003. This was 3.3% of the total discharged from ISU's campus buildings. The University discharged 705,380,056 liters (186,361,970 gallons) of wastewater to the City of Ames sewer system.

3.8 Safe Drinking Water Act (SDWA)

Drinking water for the Laboratory is supplied by the City of Ames public water system through the University's water mains. The Ames public water system is tested by the city to verify the SDWA standards are being met. The Laboratory used 20,237,940 liters (5,346,880 gallons) of potable water in 2003, or 1.87% of the 1,082,517,388 liters (286,001,952 gallons) used by the University.

Ames Laboratory Facilities Services sampled three drinking fountains for lead in 2003. Fountains in Wilhelm Hall, Metals Development and Spedding Hall were monitored in accordance with the Laboratory's policy for Monitoring Lead in Potable Water (46300.002). Samples are typically drawn and tested annually. An independent laboratory did the analysis. All samples were within regulatory limits for lead. The results are summarized in Table 3.8-1.

Table 3.8-1

Drinking Fountain Analysis

Building Location	1999 Lead (mg/l)	2000 Lead (mg/l)	2001 Lead (mg/L)	2002 (mg/L)	2003 (mg/L)
Spedding Hall, 1 st floor west hallway		<0.002			
Spedding Hall, ground floor east hallway	< 0.002		<0.002	<0.005	<0.005
Wilhelm Hall, 3 rd floor east hallway	< 0.002	< 0.002	< 0.002	<0.005	<0.005
Metals Development, room 158	< 0.002	< 0.004	< 0.002	<0.005	<0.005

* The regulatory limit for lead is 0.015 mg/l.

3.9 Superfund Amendments and Reauthorization Act (SARA) Title III and Iowa Administrative Code (IAC), Rule 567, Chapter 131, Spill Response

The Laboratory was not required to report under EPCRA Sections 302-303, 311-312,313. The Laboratory did not store any chemicals in excess or even close to EPCRA threshold limits in 2003. The Laboratory does maintain memorandums of understanding (MOU) with the Iowa State University Department of Public Safety and the City of Ames Fire Department for emergency and hazardous material situations. Copies of MOU's are located in the "Ames Laboratory Emergency Plan". The Laboratory was not required to report under EPCRA Section 304 as there were no reportable releases.

Spills to the environment are reported to the Iowa Department of Natural Resources in accordance with the IAC, Rule 567, Chapter 131. Spills are cleaned up in accordance with the IAC, Rule 567, Chapter 133. There is no minimum reportable quantity under Chapter 131. There were no reportable spills to the environment in 2003.

Reportable spills, releases and occurrences are entered into the DOE's Occurrence Reporting and Processing System (ORPS) as prescribed in DOE Order 232.1A. The Laboratory also reports any "reportable" spills/releases to DOE-CH on a quarterly basis.

Table 3.9-1

Status of EPCRA Reporting

<i>EPCRA Section</i>	<i>Description of Reporting</i>	<i>Status</i>
EPCRA Sec. 302-303	Planning Notification	Not Required
EPCRA Sec. 304	EHS Release Notification	Not Required
EPCRA Sec. 311-312	MSDS/Chemical Inventory	Not Required
EPCRA Sec. 313	TRI Reporting	Not Required

3.10 Toxic Substances Control Act (TSCA)

Approximately 3563 kg of asbestos containing material (ACM) was disposed in 2003. Ames Laboratory ACM is disposed in the Ames-Story Environmental Landfill. The landfill is permitted to accept ACM under IDNR issued permit number 85-SDP-13-91P. The Laboratory complies with the State of Iowa Solid Waste Disposal Rule #102.14 and 40 CFR 61, Subpart M (asbestos NESHAP) when disposing of ACM.

Approximately 349 kg of PCB ballasts were disposed in 2003.

3.11 Federal Insecticide, Fungicide, and Rodenticide Act (FIFRA)

Ames Laboratory does not purchase or use pesticides regulated by FIFRA.

3.12 Endangered Species Act (ESA)

No endangered species have been identified on or near Ames Laboratory facilities or Laboratory controlled areas.

3.13 National Historic Preservation Act (NHPA)

The State Historic Preservation Officer was contacted in 1997. As of September 16, 1997, there are nine structures on the campus, of Iowa State University, that are on the state historic register. None of these buildings are associated with Ames Laboratory activities. DOE does not own any of the land supporting the Ames Laboratory buildings. Ames Laboratory has not conducted a formal archeological survey. The Laboratory has no plans to remove or significantly modify its facilities. Therefore the funding for a

formal archeological survey has not been prioritized above existing facility maintenance, safety and security needs.

3.14 Migratory Bird Treaty Act

No migratory birds are affected by Ames Laboratory activities.

3.15 Executive Order 11988, "Floodplain Management"

All Laboratory facilities are well outside the 100-year flood line as mapped by the U.S. Geological Survey (USGS) and the Iowa Geological Survey Bureau (GSB).

3.16 Executive Order 11990, "Protection of Wetlands"

No wetlands are affected by Ames Laboratory activities.

3.17 Summary of Permits

In 2003, Ames Laboratory had two air emissions source construction permits, but no environmental discharge, operational, storage, treatment or disposal permits for gaseous, liquid or solid effluents. DOE held three waste generator identification numbers associated with Ames Laboratory in 2003, although two sites are inactive.

Table 3.17-1

DOE Air Emissions Source Construction Permit Numbers

Permit Number	Type	Ames Laboratory Facility/Area	Expiration
96-A-1282	Air	Ames Lab Paint Booth	None
96-A-1283	Air	Ames Lab Sand Blaster	None

Table 3.17-2

DOE RCRA Generator Identification Numbers

RCRA Generator ID #	Type	Ames Laboratory Facility/Area	Expiration
IA6890008950	LQG	Ames Lab #3-DOE (main campus)	None
* IAD984617605	CESQG	Ames Lab #1-DOE (Waste Handling Facility)	None
* IA0000365973	SQG	Ames Lab #2-DOE/ISU (chemical disposal site)	None

* Both sites have been designated by the EPA as "non-generators".

4.0 ENVIRONMENTAL PROGRAM

4.1 Pollution Awareness, Waste Minimization and Recycling Programs

Ames Laboratory's waste minimization plan was originally implemented in 1990. The plan was updated in 2003. The plan conforms to Executive Order 13101. Elements of the plan include:

- A statement of management support and commitment.
- A waste minimization policy for the Laboratory.
- Goals.
- Waste minimization & recycling activities.
- Employee awareness.
- Affirmative procurement program.

The Laboratory was engaged in waste minimization activities in 2003. These activities helped reduce the quantities of non-hazardous and hazardous wastes generated by the Laboratory. Examples include:

- Steel recycling
- White paper and computer paper are recycled.
- Styrofoam peanut recycling.
- Chemical surplus redistribution.
- Telephone book recycling.
- Fluorescent bulb recycling.
- CRT recycling.
- Battery recycling.

All other non-hazardous waste generated by the Laboratory (e.g., paper, garbage, trash) was collected and transported to the City of Ames' Resource Recovery Plant for processing. Combustible waste is used as fuel in the city's electrical utility power plant. Scrap metal is sent offsite for recycling. Ames Laboratory Facility Services Group recovers R-12 refrigerants, except from vehicles, and R-22 refrigerants for recycling. Recovery equipment is registered with EPA Region VII under Number 608. Freon is recycled through the Laboratory's waste disposal vendor.

For affirmative procurement in 2003, 95% of Ames' paper products purchased was recycled material.

4.2 Performance Measures

For calendar year 2003, Ames Laboratory reported to DOE-CH through the Laboratory's Self Assessment Report on its Affirmative Procurement Performance Measure. The Laboratory strives to purchase EPA-designated items to the maximum extent practicable. The Laboratory's rating of 100% translates to a performance level of "Outstanding".

5.0 ENVIRONMENTAL RADIOLOGICAL PROGRAM

5.1 DOE Order 5400.5, "Radiation Protection of the Public and the Environment"

Ames Laboratory has prepared guidance documents, which are based on the environmental radiation release criteria specified in DOE Order 5400.5.

5.2 DOE Order 435.1, "Radioactive Waste Management"

The majority of the Laboratory's radioactive waste is generated through renovation activities that occur in DOE buildings that have been contaminated by past activities. The Laboratory has written procedures to manage radioactive materials.

5.3 Property Release

Ames Laboratory uses a conservative approach to releasing materials and/or pieces of equipment, which have been used or stored in controlled areas and which have the potential to be radiologically contaminated. Any equipment/material from these areas is surveyed and smeared, and, if found to have removable or fixed plus removable radioactive material activity levels in excess of background levels are disposed as low level radioactive waste. In accordance with the Secretary of Energy's memorandum, dated July 13, 2000, which suspended the unrestricted release for recycling of metal from radiological areas within DOE facilities, the Laboratory will either stock pile metals that could be recycled and wait for further guidance or dispose as radioactive waste.

5.4 Radiation Emissions and Doses

There were no point source releases from the Ames Laboratory complex in 2003. Diffuse source emissions were limited to low-level waste activities and renovation activities. Emissions from these activities were minimized or eliminated by engineering devices/structures, when necessary (i.e. containment cells with HEPA filtration).

Using the guidance in 40 CFR 61.94, the annual radionuclide NESHAPS report was prepared as required. According to the guidance, and based on the isotope inventory in curies per year used at the Laboratory, air emissions were not required to be monitored. IDNR and IDPH do not require permits or monitoring for laboratory fume hoods under Chapter 20 IAC 567 22.1(2) (1). However, Appendix D to 40 CFR Part 61 does provide a method for estimating the radionuclide emissions for a year, for reporting purposes, based on the amount of radionuclides in curies used at a facility. The required parameters were used to calculate potential dose equivalent to the public due to estimated radionuclide emissions from the Laboratory. See correspondences in APPENDIX B.

5.5 Unplanned Releases

There were no unplanned or accidental radiological releases from Ames Laboratory during 2003.

5.6 Environmental Monitoring

Liquid aqueous waste (laundry machine water), when generated at the Waste Handling Facility (WHF), is analyzed for radioactivity as required by 10 CFR 835 before releasing to the sanitary sewer. The wastewater is analyzed for radioactive content using gamma ray spectroscopy. No releases above DOE Order 5400.5 (Chapters II and III) limits occurred in 2003. The WHF is located one-mile northwest of ISU main campus near the Applied Science Complex (ASC). See WebPages www.external.ameslab.gov/common/amesmap.html. Click on Iowa State University Campus Map.

Ames Laboratory performed no sampling of storm or sanitary sewer water in 2003. The City of Ames samples twice each year and ISU (permittee) samples quarterly. The Chemical Disposal Site ground water was sampled. Section 7.0 discusses groundwater.

5.7 Areas of Concern

Areas of concern are small local areas in or near the City of Ames that were, or could have been, contaminated by Ames Laboratory or ISU Manhattan Project Activities. Areas of concern include inactive waste sites, spill sites and other areas that had potential to be contaminated. Ames Laboratory, DOE, and ISU have addressed all known sites.

5.7.1 Chemical Disposal Site (CDS)

The CDS is a small former chemical burial site, located on ISU property near the Applied Science Complex (ASC), which was used from 1957-1966 for disposal of hazardous waste and waste from thorium and uranium production. The materials were buried according to standard practice at the time.

A Phase I Remedial Investigation (RI) report was conducted for the CDS in 1992-1993. A source removal was done during the fall of 1994, with final waste shipments completed in March 1995. Nine Phase I RI wells were abandoned during the source removal.

The Phase II RI fieldwork was done in 1995 and 1996, including an ecological study. The 1996 network of 15 monitoring wells was installed in April 1995. Groundwater samples were collected for the Phase II RI in August and October 1995 and in January and April 1996. The samples were analyzed for twenty-three different parameters. Uranium and volatile contamination was detected in the wells closest to the excavated area.

A Phase II RI final draft report was issued on July 24th, 1996. A draft Focussed Feasibility Study and a draft Proposed Plan were issued concurrently with the RI report. A public meeting was held August 20th to discuss the documents and future plans for the site. The public comment period was extended from 30 days to 60. The documents generated numerous comments. To address these comments, a draft Responsiveness Summary was issued on December 5, 1996. The spring of 1997 ISU conducted a "site characterization", as advised by the IDPH.

In March of 1999, the Department of Energy issued an Assistance Grant to Iowa State University for continued groundwater monitoring through March of 2002 and for proper closure of the monitoring wells associated with the former Chemical Disposal Site (CDS). The site has been cleared by the regulators. ISU will continue to monitor four wells for an indefinite period of time. All other wells have been abandoned. See correspondences in APPENDIX A.

Please refer to the site work plans and investigation reports for detailed information concerning the CDS. Copies of all final reports are in the Ames Laboratory Public Repository at the Ames Public Library. See Table 5.7-1 analytical results for groundwater sampling activities.

Table 5.7-1

Chemical Disposal Site Groundwater Analysis

Well	Location	Gross Alpha					Gross Beta				
		May 99	June 00	April 01	May 02	June 03	May 99	June 00	April 01	May 02	June 03
4A	Background Well	< 5.0	< 7.0	3.5	<6.0	< 2.40	< 3.0	< 10.0	< 3.0	<3.0	5.80
4B	Background Well	-	< 8.8	< 3.0	<5.0	< 2.55	-	< 14.0	5.6	18.0	4.18
Davidson Hall	Background Well	< 5.0	< 8.0	< 4.0	<7.0	-	< 4.0	< 4.0	< 4.0	<4.0	-
Lynch Farm	Background Well	< 6.0	< 10	< 4.0	7.8	-	12.0	< 9.0	13.0	20.0	-
Beef Nutrition	Background Well	6.0	< 9.0	< 4.0	<7.0	< 3.68	6.5	16.0	6.2	9.8	9.62
Skunk	Surface Water	-	-	-	<6.0	-	-	-	-	7.6	-
Squaw Creek	Surface Water	< 5.0	< 6.0	4.0	-	< 2.97	3.9	< 4.0	4.1	-	6.39
SW 1	Surface Water	15.0	-	< 6.0	-	< 2.99	20.0	-	6.1	-	13.0
SW 2	Surface Water	< 7.0	-	< 4.0	-	< 2.43	14.0	-	11.0	-	12.7
SW 3	Surface Water	< 6.0	<4.0	< 5.0	<9.0	< 4.06	4.7	< 5.0	5.5	7.1	9.25
10A	Site Well	550	900	110	710	91.90	1100	2700	140	700	153
10A FD	Site Well	1200	830	260	520	229	920	960	260	680	394
10B	Site Well	43.0	600	1000	520	78.1	150	1300	500	710	179
11A	Site Well	1.2	-	710	-	47.8	< 2.0	-	900	-	98.6
11B	Site Well	< 8.0	< 1.0	< 6.0	<9.0	< 5.67	13.0	12.0	8.0	12.0	9.26

*The Iowa Department of Health did not require gross alpha or beta analysis for the fourth quarter (March 1998). Results are in pCi/L.

5.7.2 Inactive Waste Sites (IWS)

The regulators have released a total of 12 IWS's. See Correspondence in Appendix C. The status of the sites released follows.

<u>Site</u>	<u>Release Status</u>	<u>Date Released</u>
Old Sewage Plant	Unrestricted use	1995
Grand Avenue Underpass	Unrestricted use	1996
Ames Municipal Cemetery	Unrestricted use	1996
Applied Sciences Complex	Unrestricted use	1996
Block House	Unrestricted use	1996
Little Ankeny Debris	Unrestricted use	1996
Annex I	Approved for current use	1996
Annex II	Approved for current use	1996
Ames Municipal Airport	Approved for current use	1996
Chemical Disposal Site	Unrestricted use	1998
Former Iowa State College Dump Site	Unrestricted use	2001
Fire Service Institute Training Area	Unrestricted use	2002

5.7.3 Former Iowa State College Dump Site

Another area of concern was a five-acre tract at 13th street and Stange Road in Ames. It has since been released. See WebPages www.external.ameslab.gov/common/amesmap.html. Click on Iowa State University Campus Map. Manhattan Project and Ames Laboratory wastes were disposed there in the early 1940's. In 1946, 250 tons of uranium extraction wastes were removed from the site for processing.

In response to a public meeting it was determined the radiological waste portion of the site would be sampled to determine if it posed a threat to human health or the environment. Sampling was conducted in August 1995. The samples were below action levels for thorium, uranium and their decay products, indicating no threat to human health or the environment. DOE sent results to IDPH in September 1995, indicating that DOE considers the radiological investigation closed. IDPH determined the site meets the radiological standard for unrestricted use. See September 17, 2001 correspondence in Appendix C.

5.7.4 Fire Service Institute Training Area

The site is on the ISU campus, under ISU control and responsibility. It is on the northeast corner of the intersection of Haber Road and the Chicago Northwestern Railroad. See WebPages www.external.ameslab.gov/common/amesmap.html. Click on Iowa State University Campus Map. ISU conducted a radiological survey of the site in April 1995 and found seven small areas of activity above background levels. The University fenced those areas to minimize human contact. Soil samples collected in July and October 1995 detected some thorium contamination. The sample ranged from 14.9 to 662.9 pCi/g Th-232. Limited non-radiological sampling was also conducted. The samples were analyzed for TCLP metals,

volatiles and pesticides. The results were within the regulatory limits. ISU issued a summary of their site sampling activities on November 22, 1996.

Chase Environmental Group (CEG), Inc, under contract with ISU, conducted radiological surveys and soil sampling November 6-11, 1997. The survey was done to determine the radionuclides involved, and to determine the depth of contamination. The Survey Report was published May 7, 1998. CEG finished remediation activities in August 1999. The site was cleaned up to the standards set by the Iowa Department of Public Health (IDPH). As a result of this remedial activity, 250 B-25 boxes representing approximately 24,000 cubic feet of thorium-contaminated soil was generated. In December of 2000, 225 B-25 boxes were shipped to Texas Ecologist in Robstown, Texas for disposal. The waste was shipped as non-hazardous industrial waste (soil contained less than 51pCi/gm thorium). The remaining boxes (25) were shipped off site in December of 2002 to Envirocare of Utah. On February 26, 2002 the IDPH concurred with ISU that the site meets the standards for "unrestricted" use (See Appendix C). Due to the possibility of some of the thorium contamination being linked to former Atomic Energy Commission activities at Ames Laboratory, DOE was implicated as one of the potential responsible parties. DOE issued a grant to ISU for \$350k in September of 2000 for the clean up and disposal of contaminated soil from the Fire Service Institute Training Area.

5.7.5 Waste Handling Facility (WHF)

The WHF is located one-mile northwest of ISU main campus near the Applied Science Complex (ASC). See WebPages www.external.ameslab.gov/common/amesmap.html. Click on Iowa State University Campus Map. The WHF was originally built to process waste from the Laboratory's research reactor. The reactor was decommissioned in the 1970's. Since that time the WHF has been used to store and process radiological contaminated material for disposal. Maintaining the WHF and the energy usage required to heat and cool the building is a cost burden. Therefore the WHF is slated to be demolished in 2005. Currently the building is being surveyed for radiological and hazardous substances. All identified contaminants will be removed prior to demolishing according to all applicable State/Federal regulations and DOE guidelines.

6.0 ENVIRONMENTAL NON-RADIOLOGICAL PROGRAM

6.1 National Pollutant Discharge Elimination System (NPDES) Data

Ames Laboratory does not have or need any NPDES permits since there are no direct sanitary discharges or surface runoff to the environment. The Laboratory discharges all liquid wastes to the ISU sanitary sewer system, which discharges into the City of Ames sanitary sewer system. The Laboratory's wastewater is included in the University's pretreatment agreement with the City of Ames. Since the DOE buildings are on ISU land, ISU holds any necessary storm water permits. See section 3.7.

6.2 Other Emissions Monitoring

Ames Laboratory did not have any activities in 2003 that required monitoring.

6.3 Continuous Release Reporting

Ames Laboratory had no continuous release sources in 2003.

6.4 Environmental Occurrences

There were no environmental occurrences in 2003.

6.5 SARA Title III Reporting Requirements

The Laboratory reviews all chemical purchases and does a year end review to verify the quantities of chemicals stored on site. The Laboratory did not store any chemicals at or above the EPCRA threshold limits in 2003. The Laboratory was in compliance with Executive Order 13148 (Federal Compliance with Right-to-Know Laws and Pollution Prevention Requirements) in 2003.

7.0 GROUNDWATER MONITORING AND PROTECTION

The Laboratory does not routinely monitor groundwater. There are no Ames Laboratory activities that pose a hazard to groundwater or surface water. The Laboratory has no underground storage tanks.

On the main campus, a groundwater-monitoring network exists consisting of five wells. One well is up gradient, for background data and four wells are down gradient (east-southeast) of the Laboratory's main campus facilities. Two of the down gradient wells belong to ISU. The ISU wells are farther down gradient than the DOE owned wells, and they are screened into a deeper aquifer. The combination of shallow wells is an attempt to detect both floating and sinking contaminants. Currently Iowa State University is not required to monitor the groundwater on the main campus.

The CDS was monitored as prescribed by the IDNR and IDPH. Only the CDS wells were sampled in 2003 (see table 5-7.1).

8.0 QUALITY ASSURANCE PROGRAMS

Radioactive sources and solutions that are used for calibration of radiation detection instrumentation is obtained with quantitative calibration that is directly traceable to the National Institute of Standards and Technology. Ames Laboratory quality assurance relied on established U.S. EPA, IDNR, IDPH, and DOE regulations, standards and methods. This applies to both radioactive and non-radioactive environmental sampling and analyses.

Ames Laboratory's air quality assurance procedure consists of maintaining an exhaust hood inventory, maintaining a radiological material balance, and tracking chemicals, and waste collection and management. These measures determine if we have a source that needs monitoring or permitting, in accordance with IDNR guidance. The Laboratory used the COMPLY modeling program to produce the annual NESHAP report.

The Safe Drinking Water Act establishes drinking water quality standards, wellhead protection requirements, monitoring requirements, treatment standards, and the regulation of underground injection activities. Drinking water for Ames Laboratory was supplied by ISU, which obtains its water from the City of Ames public water system. The Laboratory has a Policy for Monitoring Lead. Potable water at Ames facilities was monitored in 2003. Results were below the regulatory levels. See Table 3.8-1 for analytical results.

Ames Laboratory did not have any regulated point source discharges in 2003. Neither the Laboratory nor ISU had a NPDES wastewater permit. The City of Ames has a NPDES permit. The City of Ames has an agreement for wastewater pre-treatment with ISU, which included Ames Laboratory wastewater. Both the City of Ames and the University sampled ISU wastewater effluent using EPA protocols and methods. Since existing DOE buildings are on land leased from ISU, the ISU storm water permit covered Ames Laboratory activities.

Sampling methodologies, containerization, and analyses complied with EPA and receiving facility standards. Sample shipments and handling complied with standards of the U.S. Department of Transportation and the International Air Transporters Association.

Line management directs Laboratory Group/Section Leaders to be responsible for assuring that Measuring and Test Equipment is of proper type, accuracy, and tolerance to accomplish the specified requirements.

In 2003, the Laboratory followed its Readiness Review (RR) Procedure for new or significantly modified research activities. This procedure is for risk identification, categorization, and ES&H review of activities. Another purpose of the RR is to prevent and/or control releases of hazardous materials to the environment. It was developed to ensure that an appropriate level of rigor, commensurate to the risk associated with an activity's hazards, is applied to the activity's ES&H review. Forty-six readiness reviews were approved in 2002. Approved activities are reviewed every five years.

9.0 REFERENCES

1. Ames City Manager's Office , demographic information.
2. Ames Laboratory Site Environmental Reports.
3. City of Ames and ISU Pretreatment Agreements #3593-3 and #4093-3.
4. DOE Order 231.1, "Environment, Safety and Health Reporting."
5. DOE Order 5400.5, "Radiation Protection of the Public and the Environment."
6. DOE Order 474.1A, "Control and Accountability of Nuclear Materials."
7. Executive Order 13148, "Greening the Government Through Leadership in Environmental Management."
8. Executive Order 13101, "Federal Acquisition, Recycling and Waste Prevention."
9. Characterization Report for the Ames Laboratory Chemical Disposal Site, Iowa State University, September 1998.
10. IATA Dangerous Goods Regulations
11. Iowa Administration Code, Rule 567, Chapters 20-24 and 28, "Air Quality."
12. Iowa Administration Code, Rule 567, Chapter 60, "Wastewater Treatment and Disposal: Definitions, Rules of Practice."
13. Iowa Administration Code, Rule 567, Chapter 61, "Water Quality Standards."
14. Iowa Administration Code, Rule 567, Chapter 100, 101, 109, 118, 119, "Solid Waste Management and Disposal."
15. Iowa Administration Code, Rule 567, Chapter 131, "Notification of Hazardous Conditions."
16. Iowa Administration Code, Rule 567, Chapter 133, "Determining Cleanup Actions and Responsible Parties."
17. Iowa Administration Code, Rule 567, Chapter 140 and 141, "Hazardous Waste."
18. 10 CFR Part 1021, "National Environmental Policy Act Implementation Procedures."
19. 10 CFR Part 835, "Occupational Radiation Protection."
20. 29 CFR Part 1910.120, "Hazardous Waste Operations and Emergency Response."

21. 40 CFR Part 63, "National Emission Standards for Hazardous Air Pollutants for Source Categories."
22. 40 CFR Part 82, "Protection of Stratospheric Ozone."
23. 40 CFR Part 112, "Oil Prevention; Spill Prevention, Controls and Countermeasures."
24. 40 CFR Part 131, "Water Quality Standards."
25. 40 CFR Part 141, "National Primary Drinking Water Regulations."
26. 40 CFR Parts 260-264 (subpart S), 265 and 268, "Hazardous Waste Implementing Rules."
27. 40 CFR Part 279, "Standards for the Management of Used Oil."
28. 40 CFR Part 300, "National Oil and Hazardous Substances Pollution Contingency Plan."
29. 40 CFR Part 302, "Designation, Reportable Quantities and Notification."
30. 40 CFR Part 355, "Emergency Planning and Notification."
31. 40 CFR Part 761, "Polychlorinated Biphenyls (PCBs) Manufacturing, Processing Distribution in Commerce, and Use Prohibitions."
32. Consent Agreement and Consent Order, executed February 27th, 1996.

10.0 LIST OF ACRONYMS

ASC: Applied Sciences Complex of Iowa State University.

Bq: Becquerel, one disintegration per second.

CAA: Clean Air Act and Amendments.

CAG: Community Advisory Group for Ames Laboratory environmental activities.

CDS: closed Chemical Disposal Site at the ASC.

CERCLA: Comprehensive Environmental Response, Compensation and Liability Act.

CESQG: conditionally exempt small quantity generator.

CFR: Code of Federal Regulations.

CG: concentration guide, DOE derived.

CH: Chicago Operations Office of the U.S. Department of Energy.

Ci: Curie, $3.7E10$ disintegration's per second.

CWA: Clean Water Act.

CX: categorical exclusion, a class of activities determined to have no environmental impact.

DOE: U.S. Department of Energy.

EA: environmental assessment.

EIS: environmental impact statement.

EMR: environmental management review.

EMS: environmental management system.

EPA: U.S. Environmental Protection Agency.

EPCRA: Emergency Planning and Community Right to Know Act.

ESA: Endangered Species Act.

ESH&A: Environment, Safety, Health and Assurance office of Ames Laboratory.

FFCA: Federal Facilities Compliance Act.

FIFRA: Federal Insecticide, Fungicide and Rodenticide Act.

FS: feasibility study.

FSP: field sampling plan.

g: grams

GOCO: a government owned, contractor operated facility.

HEPA: high efficiency particulate air, a filter element or filtration system.

HQ: Headquarters of U.S. Department of Energy.

IAC: Iowa Administration Code.

IDNR: Iowa Department of Natural Resources.

IDPH: Iowa Department of Public Health.

IPRT: Institute for Physical Research and Technology, ISU.

ISU: Iowa State University.

IWS: inactive waste site.

LDR: land disposal restriction.

LQG: large quantity generator.

MCL: maximum contaminant level.

mg/L: milligrams per liter; equivalent to ppm.

mrem: millirem.

mSv: millisievert, 10^{-3} Sieverts.

NEPA: National Environmental Policy Act.

NESHAP: National Emission Standards for Hazardous Air Pollutants.

NHPA: National Historic Preservation Act.

NOV: notice of violation.

NPDES: National Pollutant Discharge Elimination System.

NRC: Nuclear Regulatory Commission.

ODS: ozone depleting substance.

PCB: polychlorinated biphenols.

pCi: picocurie, 10^{-12} Curies.

PIDS: performance indicator database system.

QA: quality assurance.

QAP: Quality Assessment Program, DOE.

RCRA: Resource Conservation Recovery Act.

rem: Roentgen equivalent man, radiation dose.

RESRAD: residual radiation model for sites.

RI: remedial investigation.

RPP: Radiological Protection Plan, for Ames Laboratory.

SARA: Superfund Amendments and Reauthorization Act.

SDWA: Safe Drinking Water Act.

SER: annual Site Environmental Report, for Ames Laboratory.

TASF: Technical and Administrative Support Facility, the Ames Laboratory office building.

TCLP: Toxicity Characteristic Leaching Procedure

TPQ: threshold-planning quantity.

TRU: transuranic waste.

TSCA: Toxic Substances Control Act.

WAS: work authorization system of Ames Laboratory.

11.0 REPORT DISTRIBUTION

Organization

Ms. Roxanne Purucker, Manager
Ames Site Office
DOE Chicago Operations Office
9800 South Cass Avenue
Argonne, IL 60439
Roxanne.Purucker@ch.doe.gov

Mr. Rollow Thomas, Director
Office of Worker Advocacy
Department of Energy, EH-8/FORS
1000 Independence Avenue, S.W.
Washington, DC 20585
Tom.rollow@hq.doe.gov

Mr. David Stadler, Deputy Assistant Secretary, Oversight
Department of Energy, EH-2/270
19901 Germantown Road
Germantown, MD 208874-1290
David.stadler@eh.doe.gov

Mr. Peter Rosen, Associate Director
Office of High Energy and Nuclear Physics
Department of Energy, SC-20/GTN
19901 Germantown Road
Germantown, MD 208874-1290
Peter.rosen@science.doe.gov

Ms. Van Nguyen, General Engineer
Environment, Safety and Health Division
Department of Energy, SC-83/GTN
19901 Germantown Road
Germantown, MD 208874-1290
Van.nguyen@science.doe.gov

Mr. Justin Zamirowski, Supervisory General Engineer
Safety and Technical Services
DOE Chicago Operations Office, Bldg 201
9800 South Cass Avenue
Argonne, IL 60439
Justin.Zamirowski@ch.doe.gov

Mr. Steven Silbergleid, Chief Counsel
Legal Services Group
DOE Chicago Operations Office
9800 South Cass Avenue
Argonne, IL 60439
Steven.silbergleid@ch.doe.gov

Mr. Alan Handwerker, Supervisory General Attorney
Office of General Law
DOE Chicago Operations Office
9800 South Cass Avenue
Argonne, IL 60439
Alan.handwerker@ch.doe.gov

Mr. Glenn Podonsky, Director
Office of independent Oversight & Performance
Department of Energy, C-403
19901 Germantown Road
Germantown, MD 20870
Glenn.podonsky@hq.doe.gov

Mr. Richard Day, General Engineer
Department of Energy
Office of Price-Anderson Enforcement, EH-10/270CC
19901 Germantown Road
Germantown, MD 20870
Richard.day@hq.doe.gov

Mr. Ross Natoli, Environmental Protection Specialist
Department of Energy
Air, Water and Radiation Division, EH-412/FORSTL
1000 Independence, SW
Washington, DC 20585
Ross.natoli@hq.doe.gov

Mr. Walter L. Warnick, Director
Office of Scientific and Technical Information
U.S. Department of Energy, OSTI/GTN
175 Oak Ridge Turnpike
P.O. Box 62
Oak Ridge, TN 37831
Walt.warnick@science.doe.gov

Ms. Kate Sordelet
Ames Laboratory Technical Information
Iowa State University
125 Spedding Hall
Ames, IA 50011-3400
sordeletk@iastate.edu

Mr. Gene Gunn, Chief
FFSEsUPR
USEPA Region VII
901 North Fifth Street
Kansas City, KS 66101
Gunn.gene@epa.gov

Mr. Craig Bernstein
FFSESUPR
EPA, Region VII
901 North Fifth Street
Kansas City, KS 66101
Bernstein.craig@epa.gov

Mr. William A. Spratlin
Director, Air and Toxics Division
USEPA Region VII
901 North 5th Street
Kansas City, KS 66101
Spratlin.william@epa.gov

Ms. Eleanor D. Thornton
USEPA
1200 Pennsylvania Avenue, NW
Ariel Rios Building
Mail stop 6608J
Washington, DC 20460
Thornton.eleanord@epa.gov

Mr. Don Flater
Bureau of Radiological Health
Iowa Department of Public Health
Lucas State Office Building
Des Moines, IA 50319-0075

Mr. Scott Vander Hart
DNR Environmental Services Administration
502 East 9th Street, Wallace Building
Des Moines, IA 50319-0034

Dr. David Inyang, Director
Environmental Health and Safety
118 Agronomy Laboratory
Iowa State University
Ames, IA 50011
Adinyan@iastate.edu

Senator Charles Grassley
United States Senate
Washington, DC 20510-0001
www.senate.gov/~grassley/webform.htm

Representative Tom Latham
United States House of Representatives
Washington, DC 20515
Latham.ia05@mail.house.gov

Senator Herman Quirmabach
Senate Chambers
State House
Des Moines, IA 50319-0001
Herman.quirmbach@legis.state.ia.us

Representative Jane Greiman
House Chambers
State House
Des Moines, IA 50319
Jane.greimann@legis.state.ia.us

Ames Laboratory Community Advisory Group:

Mr. Robert (Toby) Ewing

Ms. Jean Day Lassila

Mr. Joe Lynch

Ames Laboratory Management and Discipline Specialists:

Director, Dr. Tom Barton
Barton@ameslab.gov

Deputy Director, Dr. Bruce Harmon
Harmon@ameslab.gov

Chief Operations Officer, Mr. Mark Murphy
Murphy@ameslab.gov

Division Director S & T, Dr. Alan Goldman
Goldman@ameslab.gov

Information Officer, Mr. Steve Karsjen
Karsjen@ameslab.gov

ESH&A Manager, Mr. Tom Wessels
Wessels@ameslab.gov

Radiation Safety Officer, Mr. Jay Beckel
jbeckel@ameslab.gov

Industrial Hygiene, Mr. James Withers, CIH
Withers@ameslab.gov

Fire and Plant Protection, Mr. G.P. Jones
Jonesgp@ameslab.gov

Industrial Safety, Mr. Shawn Nelson
Nelsons@ameslab.gov

Environmental Specialist, Mr. Dan Kayser
Kayser@ameslab.gov

APPENDIX A

Chemical Disposal Site (CDS) Correspondences

- 1) Letter to IDPH requesting release of the CDS, September 30, 1998.
- 2) Letter from IDPH granting “unrestricted” release of the CDS, October 15, 1998.
- 3) Letter from IDPH to Edward J. Stanek, II, Ph.D., status of CDS, October 16, 1998.
- 4) Letter from ISU to DOE-Ames Group, October 22, 1998.

IOWA STATE UNIVERSITY
OF SCIENCE AND TECHNOLOGY

Environmental Health and Safety
118 Agronomy Lab
Ames, Iowa 50011-3200
515 294-5359
FAX 515 294-9357

September 30, 1998

Mr. Donald A. Flater
Chief, Bureau of Radiological Health
Iowa Department of Public Health
Lucas State Office Building
Des Moines, IA 50319-0075

Dear Mr. Flater:

Enclosed are 3 copies of the "Characterization Report for the Ames Laboratory Chemical Disposal Site - Iowa State University", dated September, 1998. This report reflects the latest work at the Chemical Disposal Site (CDS) which evolved from our meeting with IDPH on August 28, 1998. At that meeting we made the decision to remove any remaining surface soil radiation levels that were more than twice background. That work was accomplished and the affected areas were resurveyed on 9-1-98 to confirm that they were at background levels (IDPH personnel were present for the survey).

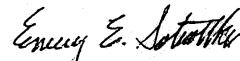
As a result of the above efforts, we believe the CDS site now meets the criteria for unrestricted release. Moreover, the Jones/McMahon study of groundwater movement at the CDS has been released, and confirms the assessment that the underground water plume has reached a steady state at the site. The down-gradient concentrations are expected to decrease over the coming years with the judgement that there is no potential threat to either Squaw Creek or the public water supply.

Therefore, after IDPH review of the enclosed report, Iowa State University is requesting consideration of the following action:

1. Release of the CDS on an unrestricted basis.
2. Reduce the groundwater sampling frequency to once per year for the remainder of the 5 year schedule.
3. Allow closure of monitoring wells MW-9A and MW-9B because of their deteriorating condition. (This has already been verbally granted by IDPH but we would appreciate having this in writing).

We appreciate the assistance and cooperation of the IDPH on the CDS project and look forward to a successful completion. We have enclosed enough copies of the "CDS Characterization Report" so you can provide them to the EPA offices involved in this project. When we hear back from the IDPH, we will provide appropriate copies to the Ames Lab, DOE and IDNR.

Sincerely,


Emery E. Sobottka
Director

enclosure

cc Warren Madden
Paul Tanaka

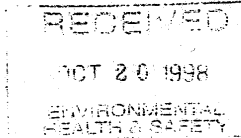


TERRY E. BRANSTAD, GOVERNOR

DEPARTMENT OF PUBLIC HEALTH
CHRISTOPHER G. ATCHISON, DIRECTOR

October 15, 1998

Emery Sobottka
Iowa State University
118 Agronomy Laboratory
Ames, Iowa 50011-3200



Dear Mr. Sobottka:

This correspondence refers to the "Characterization Report for the Ames Laboratory Chemical Disposal Site—Iowa State University." You submitted that report to us under cover of your letter dated September 30, 1998.

We have read and reviewed the report and analyzed the data. We agree with your conclusions and recommendations.

The site, known as the Ames Laboratory Chemical Disposal Site, meets the standards for unrestricted use. Additionally, we concur with your recommendation that the groundwater sampling frequency be reduced to annual. This sampling will continue until 2002.

If you have any questions or comments, please call Dan McGhee or me at (515)281-7007.

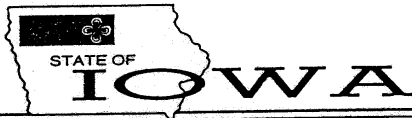
Sincerely,

Donald A. Flater, Chief
Bureau of Radiological Health

J:\ram\chemdisp\final report resp.doc

LUCAS STATE OFFICE BUILDING / 321 E. 12TH ST. / DES MOINES, IOWA 50319-0075
DEAF RELAY (HEARING OR SPEECH IMPAIRED) 1-800-735-2942 / INTERNET: [HTTP://IDPH.STATE.IA.US/](http://idph.state.ia.us/)

FAMILY & COMM. HEALTH	HEALTH PROTECTION	PLANNING & ADMINISTRATION	SUBSTANCE ABUSE & HEALTH PROMOTION	DIRECTOR'S OFFICE
515-281-3000	515-281-3643	515-281-5787	515-281-3641	515-281-5604
				515-281-4958

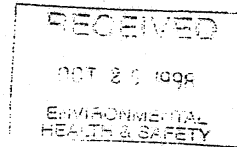


TERRY E. BRANSTAD, GOVERNOR

DEPARTMENT OF PUBLIC HEALTH
CHRISTOPHER G. ATCHISON, DIRECTOR

October 16, 1998

Edward J. Stanek, II, Ph.D.
2015 Grand Avenue
Des Moines, Iowa 50312



Dear Dr. Stanek:

This correspondence refers to the chemical Disposal Site (CDS) in Ames, Iowa. This area had been used as a disposal site by Ames Laboratory, a contractor for the U.S. Department of Energy (DOE). As you know, the DOE remediated this site in 1994. They then published the results and made recommendations for the future use of the land.

The Iowa Code designates the Iowa Dept. of Public Health (IDPH) as the state's radiation control agency. Additionally, Iowa State University (ISU) holds an Iowa Radioactive Materials license. As a result, IDPH became involved, as an overseeing agency, with the CDS project in 1994.

In August 1996, and again in December 1997, IDPH went on record with DOE saying that it could neither agree with nor concur in the data or the recommendations as presented. Our stance was that a complete characterization of the CDS had not been conducted and that, therefore, the conclusions came from data that had no statistical relevance.

In the spring of 1997 ISU initiated a complete characterization study of the CDS. We have kept you apprised of the progress of that project.

On Friday, October 9, 1998, ISU submitted its final report. In that report, ISU concludes that the CDS meets the standards for unrestricted use and recommends that annual samples from the groundwater monitoring wells be continued, on an annual basis, until 2002 to confirm the results of the study. The U.S. Environmental Protection Agency accepts this monitoring regimen.

We have reviewed the ISU data and report. We agree with the conclusions and the recommendations. We have issued a letter to ISU stating that the CDS meets the standards for unrestricted use. That letter will also contain our concurrence to reduce the groundwater monitoring frequency to annually and to continue this monitoring until 2002.

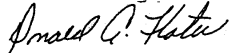
LUCAS STATE OFFICE BUILDING / 321 E. 12TH ST. / DES MOINES, IOWA 50319-0075
DEAF RELAY (HEARING OR SPEECH IMPAIRED) 1-800-735-2942 / INTERNET: [HTTP://IDPH.STATE.IA.US/](http://idph.state.ia.us/)

FAMILY & COMM. HEALTH	HEALTH PROTECTION	PLANNING & ADMINISTRATION	SUBSTANCE ABUSE & HEALTH PROMOTION	DIRECTOR'S OFFICE
			515-281-3641	515-281-5604

Page 2
Stanek, Edward
October 16, 1998

If you have any questions or comments, please do not hesitate to contact me.

Sincerely,



Donald A. Flater, Chief
Bureau of Radiological Health
515-281-3478
515-242-6284 – FAX
dflater@idph.state.ia.us

DAF/ir

cc: Emery Sobottka, ISU
Joe Obr, IDNR

J:\ram\chemdisp\stanekfinal.doc

IOWA STATE UNIVERSITY
OF SCIENCE AND TECHNOLOGY

Environmental Health and Safety
118 Agronomy Lab
Ames, Iowa 50011-3200
515 294-5359
FAX 515 294-9357

October 22, 1998

Mr. James Buchar
Ames Group
Department of Energy
Chicago Operations Office
9800 South Cass Ave
Argonne, IL 60439

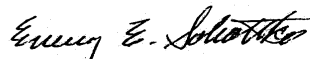
Dear Mr. Buchar:

The additional sampling and testing that we have been conducting at the Ames Laboratory Chemical Disposal Site (CDS) has culminated in the Iowa Department of Public Health (IDPH) granting ISU unconditional release of the CDS site. In addition, the IDPH has also granted our request to reduce groundwater well water sampling frequency from one per quarter to once per year for the remainder of the sampling period (until year 2002). Enclosed are documents which describe CDS activities:

1. The final Characterization Report for the CDS.
2. A letter from ISU to IDPH (dated September 30, 1998) which requests unrestricted closure and reduces groundwater sampling frequency at the CDS.
3. Two letters from IDPH (dated October 15, 1998 and October 16, 1998) which grant ISU unrestricted release of the CDS and reduced groundwater sampling at the CDS until the year 2002.

After you have had the opportunity to review these documents I would like to continue our discussion about coordinating a joint press release. A lot of people, departments, state and federal agencies, etc., have had a hand in completing this successful project and we may want to consider some recognition of that fact.

Sincerely,



Emery E. Sobottka
Director

enclosure

cc Tom Barton, Ames Lab
Tom Wessels, Ames Lab
Joe Obr, IDNR
Warren Madden (#3 enclosure only)
Paul Tanaka (#3 enclosure only)

OCT 22 1998

APPENDIX B

Air Permit Correspondences

- 1) Letter from IDNR exempting laboratory fume hoods from permitting, July 18, 1994.
- 2) Letter from Jacobs Engineering Group Inc. exempting graphics paint spray booth from permitting, July 16, 1997.
- 3) Letter from IDNR exempting graphite lathe hood exhaust from permitting, February 6, 1998.
- 4) U.S. Department of Energy Air Emissions Annual Report, Calendar Year 2003.



TERRY E. BRANSTAD, GOVERNOR

COPY

DEPARTMENT OF NATURAL RESOURCES
LARRY J. WILSON, DIRECTOR

July 18, 1994 :

CERTIFIED

Ms. Lowell K. Mathison:
Environment, Safety & Health Group
Ames laboratory
Iowa State University
115 Spedding
Ames, IA 50011

Dear Mr. Mathison,

This letter is to inform you that the 144 chemical fume hoods and associated 34 exhaust points described in your letters dated April 14th and June 28th of 1994 are exempted from both air construction permit and Title V permitting provisions.

If you have any questions regarding the above, please call me at (515) 281-8852.

Sincerely,

A handwritten signature in black ink, appearing to read "Peter Hamlin".

Peter Hamlin, chief
Air Quality Bureau



JACOBS ENGINEERING GROUP INC.

8208 MELROSE DRIVE, SUITE 210, LENEXA, KANSAS 66214
TELEPHONE (913) 492-9218 • FAX (913) 492-6198

July 16, 1997

Mr. Walter P. Waters
Iowa State University
Ames Laboratory
G40 TASF
Ames, IA 50011

Mr. Waters,

Jacobs Engineering has been contracted by the Iowa Department of Natural Resources to review Iowa State University's application for an air construction permit for a paint spray booth (S23). The project number assigned is 96-456.

According to 567 Iowa Administrative Code (IAC) 22.8(1)c, the paint spray booth is exempt from the permitting process if more than one gallon per day but less than three gallons per day of spray material is sprayed. The emissions must be vented through a stack that is at least 22 feet tall and daily records of the material sprayed must be kept for eighteen (18) months from the date to which the records apply. In order formally to be exempt from the permitting process, a written statement must be submitted according to 567 IAC 22.8(1)e which reads:

"I certify that all paint booths at the facility and listed below are in compliance with all applicable requirements of rule 567 IAC 22.8(1). I understand this equipment shall be deemed permitted under the terms of 567 IAC 22.8(1) only if all applicable requirements of 567 IAC 22.8(1) are met. This certification is based on information and belief formed after reasonable inquiry; the statements and information in the document are true, accurate, and complete."

This certification must be signed by, for municipal, state, county, or other public facilities, the principal executive officer or the ranking elected official.

This certification must be submitted to:

Mr. Pete Hamlin, Air Quality Chief
Iowa Department of Natural Resources
7900 Hickman Road, Suite 1
Urbandale, IA 50322

Sincerely,

Barbara Seufferling
Jacobs Engineering Group, Inc.



COPY

DEPARTMENT OF NATURAL RESOURCES
LARRY J. WILSON, DIRECTOR

CERTIFIED MAIL

February 6, 1998

ATTN: Walter P. Waters
Ames Laboratory
Iowa State University
Ames, Iowa 50011-3020

RE: Construction permit exemption request for graphite lathe hood exhaust
Facility No. 85-01-057

Dear Mr. Waters:

Your request for a construction permit exemption for the above referenced source has been received. Based on the information you have provided your request has been approved. You should be aware that any exemption you qualify for does not establish any federally enforceable emission limits. This means that when determining applicability for the various programs you may be subject to, our bureau would assume the maximum potential emissions from this source.

If you have any questions, you may contact me at the address or telephone numbers listed below.

Sincerely,

Clark W. Ott
Environmental Specialist - Compliance Assistance Section
Air Quality Bureau
515-281-4899

cc: FO5, w/ attachments

ames lab.doc

7900 HICKMAN ROAD, SUITE 1 / URBANDALE, IOWA 50322 / 515-242-5100 / FAX 515-242-5094

**U.S. Department of Energy
Air Emissions Annual Report
Calendar Year 2003**

SECTION I

Facility Information

Site Name: Ames Laboratory, Iowa State University

Operations Office: Chicago Operations

Address: 9800 South Cass Avenue
Argonne, IL 60439

Contact: Mike Saar Phone: 630-252-2245

Site Operator: Iowa State University

Site Address: G40 TASF, Iowa State University
Ames, IA 50011

Contact: Dan Kayser Phone: (515) 294-2153

Site Description:

The Ames Laboratory is located on the campus of Iowa State University (ISU) in Ames, Iowa. The Ames Laboratory is operated by ISU for the DOE under contract No. W-7405-ENG-82. There are nine buildings owned by the DOE. The Ames Laboratory conducts basic and intermediate applied research in physical, mathematical, and engineering sciences that underlie energy technologies and other areas of national importance.

SECTION II

Methods for Dose Assessment/Air Emissions Data

Methods used for evaluating doses from the air emissions.

Very small amounts of radionuclides were used again in CY 2003. Radionuclides were used in solution or in solid form; consequently there were no radioactive air emissions and no exposures to the general public. The Laboratory also maintains a material balance for future research activities. Values entered into the EPA's COMPLY model, were possession amounts and not release amounts. Based solely on possession quantities, Ames Laboratory met the level 1 compliance criteria. Again, the potential for release and exposure to the public would be minimal and highly unlikely.

CERTIFICATION

I certify under penalty of law that I have personally examined and am familiar with the information submitted herein and based on my inquiry of those individuals immediately responsible for obtaining the information, I believe that the submitted information is true, accurate and complete. I am aware that there are significant penalties for submitting false information including the possibility of fine and imprisonment. (See, 18 U.S.C. 1001).

Name: Tom Barton Title: Director, Ames Laboratory

Signature:  Date: 3/12/04

APPENDIX C

Inactive Waste Sites Correspondences

- 1) Letter from IDPH, Closure of nine waste sites, January 11, 1996.
- 2) Letter from DOE-CH, Regarding the Iowa State College Dump Site, April 20, 1999.
- 3) Letter from IDPH, Closure of the Former Iowa State College Dump Site, September 17, 2001.
- 4) Letter from IDPH, Closure of the Fire Service Institute Training Area, February 26, 2002.



TERRY E. BRANSTAD, GOVERNOR

DEPARTMENT OF PUBLIC HEALTH
CHRISTOPHER G. ATCHISON, DIRECTOR

January 11, 1996

Warren R. Madden
Vice President for Business and Finance
Iowa State University
125 Beardshear Hall
Ames, Iowa 50011-2038

Dear Mr. Madden:

Reference is made to your letter of January 5, 1996 in which you request our concurrence on the status of nine inactive waste sites which we possibly contaminated with radioactive materials as a result of the operation of Ames Laboratory as a DOE contractor in the past. Listed below are the sites by name and our conclusions as to the status of the site regarding closure.

1. Ames Old Waste Water Treatment Facility (WWTF): Met criteria for unrestricted use per Department letters to the city of Ames dated June 16, 1994 and February 17, 1995.
2. Grand Avenue Under Pass: Based on the data provided by DOE, ISU and data collected by this Department this area meets the criteria for unrestricted use. In fact, there is information which indicates that this area never was subjected to the spreading of contaminated sludge from the WWTF.
3. Ames Municipal Cemetery: Based on the data provided by DOE, ISU and data collected by this Department this area meets the criteria for unrestricted use. In fact, there is information which indicates that this area never was subjected to the spreading of contaminated sludge from the WWTF.
4. Applied Science Center: Based on the data provided by DOE, ISU and data collected by this Department, this area meets the criteria for unrestricted use.
5. Block House Area : Based on the data provided by DOE, ISU and data collected by this Department, this area meets the criteria for unrestricted use.
6. Little Ankeny Debris Site: Based on the data provided by DOE, ISU and data collected by this Department, this area meets the criteria for unrestricted use.
7. Annex I: Based on the data provided by DOE, ISU and data collected by this Department, this area can be used as it is now, in perpetuity, without public health concerns. However, if the site is developed for any other purpose additional surveys or sampling will be necessary to confirm that if residual radioactive material exists it is not in amounts which could be of public health concern during the developmental process.
8. Annex II: : Based on the data provided by DOE, ISU and data collected by this Department, this area can be used as it is now, in perpetuity, without public health concerns. However, if the site is developed for any other purpose additional surveys or sampling will be necessary to confirm that if residual radioactive material exists it is not in amounts which could be of public health concern during the developmental process.

LUCAS STATE OFFICE BUILDING / DES MOINES, IOWA 50319-0075 / 515-281-5787
FAX # (515) 281-4958 / TDD-DEAF SERVICES #(515) 242-6156

Page 2
Madden, Warren R.
January 11, 1996

9. Ames Municipal Airport: Based on the data provided by DOE, ISU and data collected by this Department, this area can be used as it is now, in perpetuity, without public health concerns. However, if the site is developed for any other purpose additional surveys or sampling will be necessary to confirm that if residual radioactive material exists it is not in amounts which could be of public health concern during the developmental process.

Based on the above, it is my opinion that we concur with the University's decision to bring the nine sites to closure with the special provisions placed on Annex I, II and the Airport. I would like to take this opportunity to thank you, the ISU Staff and the Ames Laboratory Staff who have assisted in working through the long laborious process of reading the conclusions. We certainly look forward to working with all of you in the future. If you have question regarding the above, please do not hesitate to contact me.

Sincerely,



Donald A. Flater, Chief
Bureau of Radiological Health
(515) 281-3478

cc: E. Sobottka, ISU
Tom Newman, City of Ames
Dr. Tom Barton, Ames Laboratory

j:\rad-admin\madden.doc



Department of Energy
Chicago Operations Office
9800 South Cass Avenue
Argonne, Illinois 60439

April 20, 1999

Dr. Aniefiok D. Inyang, Director
Environmental Health and Safety
118 Agronomy Laboratory
Iowa State University
Ames, Iowa 50011-3200

Dear Dr. Inyang:

SUBJECT: IOWA STATE COLLEGE DUMP SITE

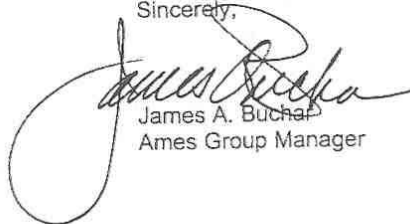
References: 1. Letter, Taboas to Sobottka, dated January 30, 1996
2. Letter, Sobottka to Taboas, dated February 28, 1996

It has recently been brought to my attention that an old issue remains open relative to the Iowa State's College Dump Site. As I can best determine the issue arose when the Department of Energy (DOE) in reviewing the University's "Review and Assessment of the Former Iowa State College Dump Site" report provided some comments (Reference 1) for the University's consideration. As indicated in Reference 2, the University adopted most of the suggested changes. However, one statement as made regarding the availability of information about the disposal of beakers and containers at the site, which raised a concern with your predecessor. As can be seen from Reference 2, Mr. Sobottka was not aware of and did not have any evidence of anything other than uranium being disposed of at the site. Mr. Sobottka's letter requested that DOE make available any information we may have as to the origin or type of materials disposed of at the site and how we became aware of this information.

In trying to respond to this open issue, we have conducted a review internally of the statement previously made in our Reference 1 letter and we are not able to provide any documentation as requested. Our statement at the time was based on informal discussion with an Ames Laboratory employee (now retired) and a cursory review, over time, of some College Dump Site related documents, none of which were ever in our possession.

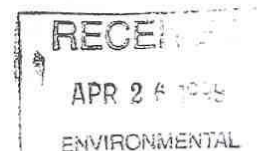
It is our position that without having any specific knowledge or records, other than as mentioned above, relative to the College Dump Site, we withdraw the comment in question and recommend that the report be finalized and the issue closed.

Sincerely,



James A. Buchan
Ames Group Manager

Enclosures:
Reference Letters





STATE OF IOWA

THOMAS J. VILSACK
GOVERNOR

DEPARTMENT OF PUBLIC HEALTH
STEPHEN C. GLEASON, D.O., DIRECTOR

SALLY J. PEDERSON
LT. GOVERNOR

September 17, 2001

David Inyang, Ph.D., RSO
Iowa State University
118 Agronomy Lab.
Ames, Iowa 50011

Dear Dr. Inyang:

This correspondence refers to your letter to me dated August 22, 2001. In that letter you enclosed a report entitled, "Review and Assessment of the Former Iowa State College Dump Site." This report detailed the actions taken to assess the radiological hazard at that site. Your letter requested that we review and comment on the report.

The report references and analyzes the results of soil sampling at the former dumpsite. We have reviewed this data and your conclusions. We agree that the data does show that the former Iowa State College Dump Site meets the standards for unrestricted use.

We wish to remind you that our conclusions speak only to radiological standards and do not address heavy metals or organic compounds.

If you have any questions, please contact Dan McGhee at 515-725-0305 or me.

Sincerely,

Handwritten signature of Donald A. Flater

Donald A. Flater, Chief
Bureau of Radiological Health
(515) 281-3478

401 SW 7th STREET, SUITE D / DES MOINES, IOWA 50309-4611
DEAF RELAY (HEARING OR SPEECH IMPAIRED) 1-800-735-2942 / INTERNET: HTTP://IDPH.STATE.IA.US/

Table with 4 columns: DIRECTOR'S OFFICE, EXECUTIVE STAFF, DIV. OF ADMINISTRATION & REGULATORY AFFAIRS, DIV. OF ENVIRONMENTAL HEALTH, DIV. OF FAMILY & COMMUNITY HEALTH, DIV. OF HEALTH PROMOTION, PREVENTION & ADDICTIVE BEHAVIORS, DIV. OF TOBACCO USE PREVENTION & CONTROL. Includes phone and fax numbers for each division.



STATE OF IOWA

THOMAS J. VILSACK
GOVERNOR

SALLY J. PEDERSON
LT. GOVERNOR

DEPARTMENT OF PUBLIC HEALTH
STEPHEN C. GLEASON, D.O., DIRECTOR

February 26, 2002

David Inyang, Ph.D.
Director, Environmental Health and Safety
Iowa State University
118 Agronomy Lab
Ames, Iowa 50011-3200

RE: Release of site for unrestricted use

Dear Dr. Inyang:

This correspondence refers to your letter, dated February 20, 2002, to me. In that letter you transmitted the "Final Status Survey Report for Fire Service Institute Training Area Iowa State University." You also requested "the site be released for unrestricted use."

We have reviewed the report and agree with your conclusion that the site meets the standards for unrestricted use. You may refer to these standards in the Iowa Administrative Code 641-40.29(136C). We cannot, however, "release" this site because it was never restricted. We reiterate, though, that the data demonstrates compliance with unrestricted use.

If you have any questions, please contact Dan McGhee at 515-725-0305 or me.

Sincerely,

Donald A. Flater, Chief
Bureau of Radiological Health
515-281-3478
515-725-0318 - FAX
dflater@idph.state.ia.us

DAF/rk

RECEIVED
FEB 29 2002
DIV. OF ENVIRONMENTAL
HEALTH & SAFETY

LUCAS STATE OFFICE BUILDING / 321 E. 12TH ST. / DES MOINES, IOWA 50319-0075
DEAF RELAY (HEARING OR SPEECH IMPAIRED) 1-800-735-2942 / INTERNET: [HTTP://WWW.IDPH.STATE.IA.US/](http://www.idph.state.ia.us/)

DIRECTOR'S OFFICE
515-281-5605
FAX/515-281-4958

DIV. OF ADMINISTRATION
515-281-5604
FAX/515-281-4958

DIV. OF COMMUNITY HEALTH
515-281-6535
FAX/515-242-6384

DIV. OF HEALTH PROTECTION & ENVIRONMENTAL HEALTH
515-281-7726
FAX/515-281-4529

DIV. OF HEALTH PROMOTION, PREVENTION & ADDICTIVE BEHAVIORS
515-281-3641
FAX/515-281-4535

DIV. OF TOBACCO USE PREVENTION & CONTROL
515-281-6225
FAX/515-281-6475

Bureau of Radiological Health 401 SW 7th Street, Suite D; Des Moines, IA 50309 Internet Address idph.state.ia.us/pa/rh.htm

APPENDIX D

EPA Correspondences

- 1) EPA letter (NOV's), April 6, 1999.
- 2) EPA e-mail status of CDS and WHF EPA ID Numbers, July 8, 2003.



UNITED STATES ENVIRONMENTAL PROTECTION AGENCY

REGION VII
726 MINNESOTA AVENUE
KANSAS CITY, KANSAS 66101

APR 06 1999

CERTIFIED MAIL

Return Receipt Requested

Article Number: P 165 405 793

Dan Kayser, Environmental Specialist
Ames Laboratory
G40 TASF
Ames, IA 50011

Dear Mr. Kayser:

RE: Ames Laboratory #3
Ames, IA
RCRA I.D. No. IA6890008950

On January 19-20, 1999, a representative of the U. S. Environmental Protection Agency (EPA) inspected your facility. The inspection was conducted under the authority of Section 3007 of the Resource Conservation and Recovery Act (RCRA). A copy of that inspection report is enclosed.

A Notice of Violation (NOV) was issued to your company during the inspection. I have reviewed your February 1, 1999, response to the NOV and determined that it adequately addresses the violations listed in the NOV. Therefore, no further submittals are required at this time. Please note that EPA reserves its right to pursue appropriate enforcement actions, including penalties, for violations discovered as a result of this inspection.

I would like to remind you that your facility is responsible for maintaining compliance with all applicable hazardous waste regulations. If there are any questions regarding this matter, please contact me at (913) 551-7136.

Sincerely,

Kendra Kennell
RCRA Enforcement and State Programs Branch
Air, RCRA, and Toxics Division

Enclosure

cc: Joseph Obr, Iowa Dept. of Natural Resources

APR 08 1999



Date: Tue, 08 Jul 2003 14:58:47 -0500
From: Urban.Trevor@epamail.epa.gov
Subject: Ames Laboratory
To: kayser@ameslab.gov
X-Mailer: Lotus Notes Release 5.0.9a January 7, 2002
X-MIMETrack: Serialize by Router on EPAHUB11/USEPA/US(Release 5.0.9a |January 7, 2002) at 07/08/2003 03:58:48 PM

I hope this takes care of the issue. Contact me at 913-551-7133 if you have any questions. Thanks for your patients.

----- Forwarded by Trevor Urban/ENSV/R7/USEPA/US on 07/08/03 02:56 PM

Colleen Thomas

To: Trevor

Urban/ENSV/R7/USEPA/US@EPA

07/01/03 04:07 PM cc:

Subject: Ames Laboratory

Trevor,

RCRAInfo is finally working. I made the changes to the Ames Laboratory sites and they are both marked as Non-Generators. Unfortunately, there's no good/easy way to mark a facility as Inactive in RCRAInfo, but at least they're in there as non-generators. If you need anything else done to these sites, let me know.

Colleen Thomas
Tri-Cor Industries, Inc.
@EPA Region VII
913/551-7182