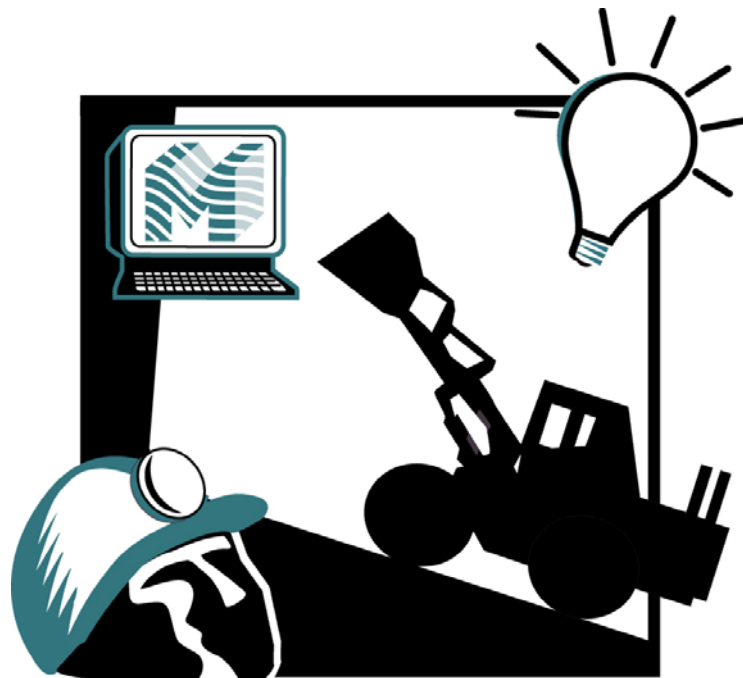


MINING

INDUSTRY OF THE FUTURE



December 2002

**ENERGY AND ENVIRONMENTAL
PROFILE OF THE
U.S. MINING INDUSTRY**

ENERGY AND ENVIRONMENTAL PROFILE OF THE U.S. MINING INDUSTRY

December 2002

**Prepared By:
BCS, Incorporated**

Prepared for

U.S. Department of Energy
Office of Energy Efficiency and Renewable Energy

Preface

The U.S. Department of Energy and the National Mining Association are working in partnership to implement the Mining Industry of the Future strategy. Cooperatively, the two organizations selected specific mineral commodities to review in the Mining Industry Profile. These mineral commodities selected are those that require significant energy to extract and prepare for a first saleable product, and have the potential for energy and environmental improvement through research and development. The eight groups of minerals commodities selected include: Coal; Potash, Soda Ash, and Borate; Iron; Copper; Lead and Zinc; Gold and Silver; Phosphate Rock, and Crushed Rock. These commodities represent 66 percent of all production value in mining in the U.S. Although energy data are withheld for a number of mined commodities, the commodities selected for this report consume an estimated 78 percent of the energy consumed by the U.S. mining industry. Analysis of the energy consumption for these commodities will provide industry with a valuable benchmark for identifying opportunities for improved energy efficiency.

The Mining Industry of the Future is a working partnership between government and industry. Among the goals of the partnership is to research, develop, and deploy new technologies to achieve the goals listed in the National Mining Association's Vision "The Future Begins with Mining, A Vision of the Mining Industry of the Future." The Vision goals are as follows:

- **Low-cost and Efficient Production:** Use advanced technologies to improve process efficiencies from exploration to final product.
- **Superior Exploration and Resource Characterization:** Develop ways to find and define larger high-grade reserves with minimal environmental disturbances.
- **Safe and Efficient Extraction and Processing:** Use advanced technologies and training to improve the worker environment and reduce worker exposure to hazards that reduce lost-time accidents and occupational diseases to near zero.
- **Responsible Emission and By-Product Management:** Minimize the impact from mining activities on the environment and the community by fully integrating environmental goals into production plans. Support the development of technologies to reduce carbon dioxide emissions to near zero and sequester additional emissions.
- **Advanced Products:** Maintain and create new markets for mining products by producing clean, recyclable, and efficiently transportable products and form cooperative alliances with the processing and manufacturing industries to jointly develop higher-quality and more environmentally friendly products.
- **Positive Partnership with Government:** Work with government to reduce the time for resource development cycle by two-thirds. Achieve equitable treatment for mining compared to other industries that produce materials and energy relative to international competition by making legal and regulatory framework rational and consistent.
- **Improved Communication and Education:** Attract the best and the brightest by making careers in the mining industry attractive and promising. Educate the public about successes in the mining industry of the 21st century and remind them that everything begins with mining.

Table of Contents

Preface

1. Overview	1-1
2. Coal	2-1
3. Potash, Soda Ash and Borate	3-1
4. Iron Ores	4-1
5. Copper Ores	5-1
6. Lead and Zinc Ores	6-1
7. Gold and Silver Ores	7-1
8. Phosphate Rock	8-1
9. Crushed & Broken Limestone and Other Crushed Rock	9-1
Glossary	G-1

Attachments

Methodology used to Generate Estimated Energy Requirement Tables	A-1
------------------------------------------------------------------------	-----

List of Tables

Overview

Table 1-1.	Commonly Known Materials and End Uses	1-3
Table 1-2.	Market and Industry Data for Selected Commodities (2000)	1-7
Table 1-3.	Estimated Industrial Explosives and Blasting Agents Sold for Consumption in the U.S. by Class and Use	1-15
Table 1-4.	Estimated Energy Released by Explosives used in Mining Mining Equipment	1-16
Table 1-5.	Type and Quantity of Fuels Consumed for Selected Commodity (1997)	1-19
Table 1-6.	Typical Emissions, Effluents, Byproducts and Solid Wastes	1-22 1-22
Table 1-7.	Mine Subsidence in the U.S. by Mine Type and Processing _2000 (Acres) ..	1-25
Table 1-8.	Federal Requirements Affecting the Mining Industry	1-26

Coal

Table 2-1.	Underground Coal Production by Mining Method	2-6
Table 2-2.	Coal Production and Energy Consumed by Type	2-17
Table 2-3.	Estimated Energy Requirements for a 3,322 ton/day Hypothetical Eastern Underground Coal Mine	2-18
Table 2-4.	Estimated Energy Requirements for a 27,808 ton/day Hypothetical Eastern Longwall Coal Mine	2-19
Table 2-5.	Estimated Energy Requirements for a 9,967 ton/day Hypothetical Interior Surface Coal Mine	2-20
Table 2-6.	Estimated Energy Requirements for a 27,778 ton/day Hypothetical Western Surface Coal Mine	2-22
Table 2-7.	Estimated Energy Requirements for Beneficiation (Eastern Mine)	2-23
Table 2-8.	CH ₄ Emissions from Coal Mining (1990 - 1998) (Million Metric Tons of Carbon Equivalent)	2-24

Potash, Soda Ash, and Borate Minerals

Table 3-1.	Potash, Soda Ash, and Borate Mineral Production and Energy Consumed by Type	3-14
------------	--------------------------------------------------------------------------------------	------

Table 3-2.	Estimated Energy Requirements for a 7,695 ton/day Underground Potash Mine	3-15
Table 3-3.	Estimated Energy Requirements for Potash Beneficiation	3-16
Table 3-4.	Emissions from Soda Ash	3-17
Table 3-5.	Carbon Dioxide Emissions from Soda Ash Manufacture and Consumption	3-18
Table 3-6.	Emissions from Borate Minerals	3-18
Table 3-7.	Effluents from Soda Ash and Borate Minerals	3-18
Table 3-8.	By-products from Soda Ash	3-19

Iron

Table 4-1.	Iron Production and Energy Consumed by Type	4-9
Table 4-2.	Energy Requirements for Hypothetical Iron Mine	4-10
Table 4-3.	Estimated Energy Requirements for a 13,699 ton/day Surface Iron Mine ...	4-11
Table 4-4.	Estimated Energy Requirements for Beneficiation Iron	4-1

Copper

Table 5-1.	Copper Production and Energy Consumed by Type	5-13
Table 5-2.	Estimated Energy Requirements for a 68,493 ton/day Surface Copper Mine	5-14
Table 5-3.	Estimated Energy Requirements needed for Pyrometallurgical Processing of Copper	5-15
Table 5-4.	Estimated Energy Requirements needed for Hydrometallurgical Processing of Copper	5-16
Table 5-5.	Emissions from Copper Ore Processing	5-16
Table 5-6.	Effluents from Copper Ore Processing	5-17
Table 5-7.	By-products from Copper Ore Processing	5-17
Table 5-8.	Solid Wastes from Copper Ore Processing	5-19

Lead and Zinc

Table 6-1.	Lead and Zinc Production and Energy Consumed by Type	6-17
Table 6-2.	Estimated Energy Requirements for a 3,690 ton/day Underground Lead Mine	6-18
Table 6-3.	Estimated Energy Requirements for Lead Processing	6-19
Table 6-4.	Effluents from Lead and Zinc Ore	6-21
Table 6-5.	By-products from Lead Ore	6-23
Table 6-6.	By-products from Zinc Ore	6-25

Gold and Silver

Table 7-1.	Gold and Silver Production and Energy Consumed by Type	7-15
Table 7-2.	Estimated Energy Requirements for a 15,000 ton/day Surface Gold Mine	7-16
Table 7-3.	Estimated Energy Requirements for Beneficiation and Processing of Gold ..	7-17
Table 7-4.	By-products from Gold and Silver Ores	7-19

Phosphate Rock

Table 8-1.	Phosphate Rock Production and Energy Consumed by Type	8-10
Table 8-2.	Estimated Energy Requirements for a 15,068 ton/day Surface Phosphate Mine	8-11
Table 8-3.	Estimated Energy Requirements to Process Phosphate	8-11
Table 8-4.	Effluents from Phosphate Beneficiation	8-12
Table 8-5.	By-products from Phosphate Ore	8-15

Limestone and Other Crushed Rock

Table 9-1.	Limestone and Other Crushed Rock Production and Energy Consumed by Type	9-7
Table 9-2.	Estimated Energy Requirements for a 6,000 ton/day Surface Limestone Mine	9-9
Table 9-3.	Estimated Energy Requirements for Beneficiation of Limestone	9-10
Table 9-4.	Carbon Dioxide Emissions from Limestone & Dolomite Use	9-11
Table 9-5.	Net Carbon Dioxide From Lime Production	9-11

List of Figures

Overview

Figure 1-1	U.S. Production of Selected Minerals	1-2
Figure 1-2	Past Productivity and Anticipated Productivity from Technology Change from one Company	1-5
Figure 1-3.	Net Import reliance as a Percentage of Consumption for Selected Non-Fuel Minerals: 2000	1-6
Figure 1-4.	Value of Mining in the U.S. - 2000	1-9
Figure 1-5.	Coal Consumption by Sector - 2000	1-9
Figure 1-6.	Industrial Minerals Consumption by Sector - 1998	1-10
Figure 1-7.	Metals Consumption by Sector - 1998	1-10
Figure 1-8.	Materials Handled vs. Production for Coal, Metals, and Industrial Minerals	1-17
Figure 1-9.	Estimated Energy Consumption by Stage	1-20

Coal

Figure 2-1.	Coal Mining Flow Diagram	2-14
Figure 2-2.	Coal Processing Flow Diagram	2-15
Figure 2-3.	Materials Handled for Coal Mining - 2000	2-16

Potash, Soda Ash, and Borate Minerals

Figure 3-1.	Potash Process Flow Diagram	3-8
Figure 3-2.	Soda Ash Monohydrate Process Flow Diagram	3-9
Figure 3-3.	Boron Production Flow Diagram	3-10
Figure 3-4.	Boric Acid Production Flow Diagram	3-11
Figure 3-5.	Materials Handled for Potash, Soda Ash, and Boraes	3-12

Iron

Figure 4-1.	Iron Ore Mining Flow Diagram	4-7
Figure 4-2.	Materials Handled for Iron Mining	4-8

Copper

Figure 5-1.	Copper Mining Flow Diagram	5-8
Figure 5-2.	Pyrometallurgical Process Flow Diagram for Copper Ore	5-9
Figure 5-3.	Hydrometallurgical Process Flow Diagram for Copper Ore	5-10
Figure 5-4.	Materials Handled for Copper Mining	5-12

Lead and Zinc

Figure 6-1.	Lead and Zinc Ore Mining Flow Diagram	6-14
Figure 6-2.	Lead and Zinc Beneficiation and Processing Diagram	6-15
Figure 6-3.	Materials Handled for Lead and Zinc Mining	6-16

Gold and Silver

Figure 7-1.	Gold and Silver Mining Flow Diagram	7-12
Figure 7-2.	Gold and Silver Beneficiation and Process Flow Diagram	7-13
Figure 7-3.	Materials Handled for Gold and Silver Mining	7-14

Phosphate Rock

Figure 8-1.	Phosphate Rock Mining Flow Diagram	8-8
Figure 8-2.	Materials Handled for Phosphate Rock Mining	8-9

Limestone and Other Crushed Rock

Figure 9-1.	Limestone and other Crushed Rock Process Flow Diagram	9-5
Figure 9-2.	Materials Handled for Crushed Rock Mining	9-8