



U.S. Department  
of Transportation  
**Federal Highway  
Administration**

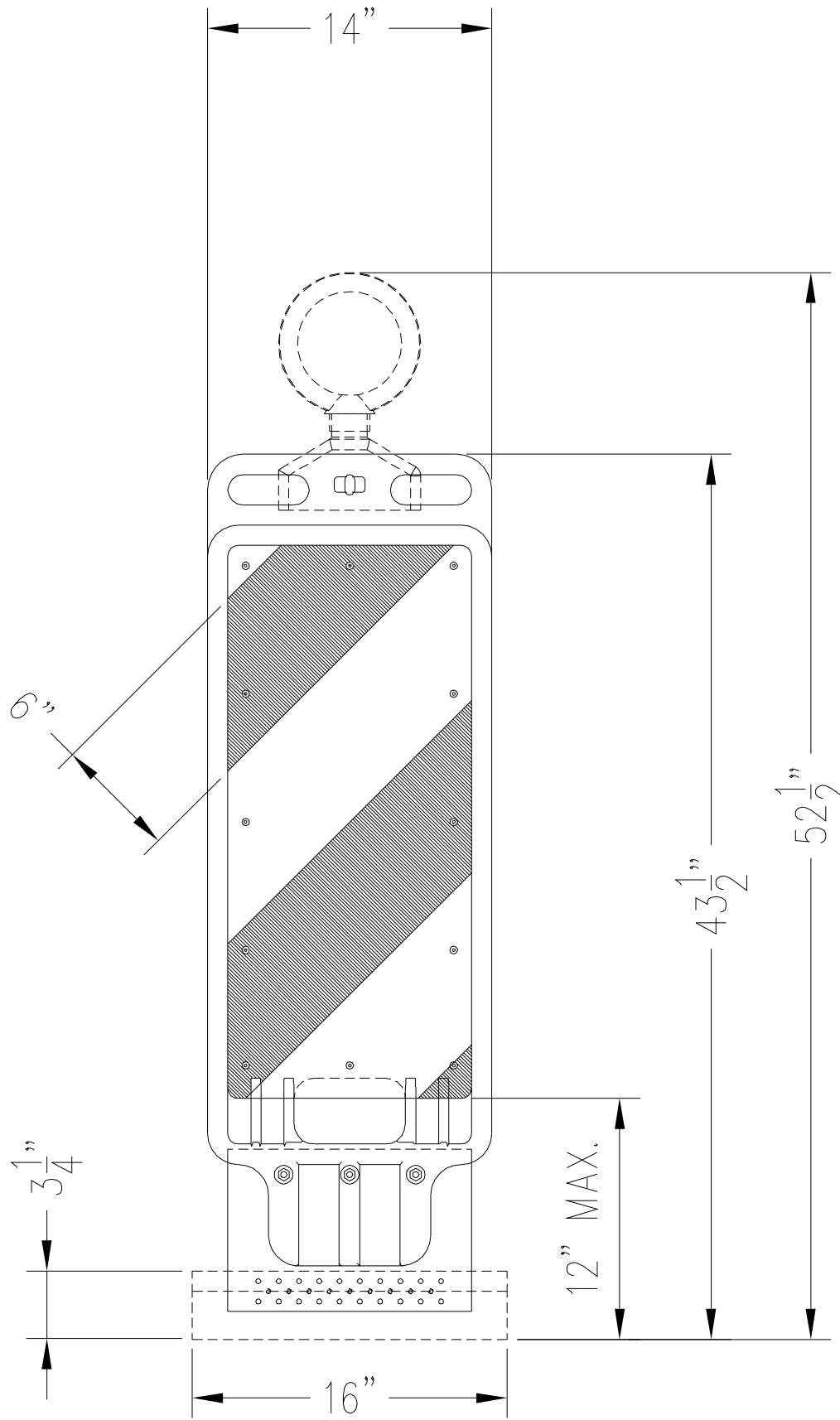
June 18, 2009

1200 New Jersey Avenue, SE.  
Washington, DC 20590

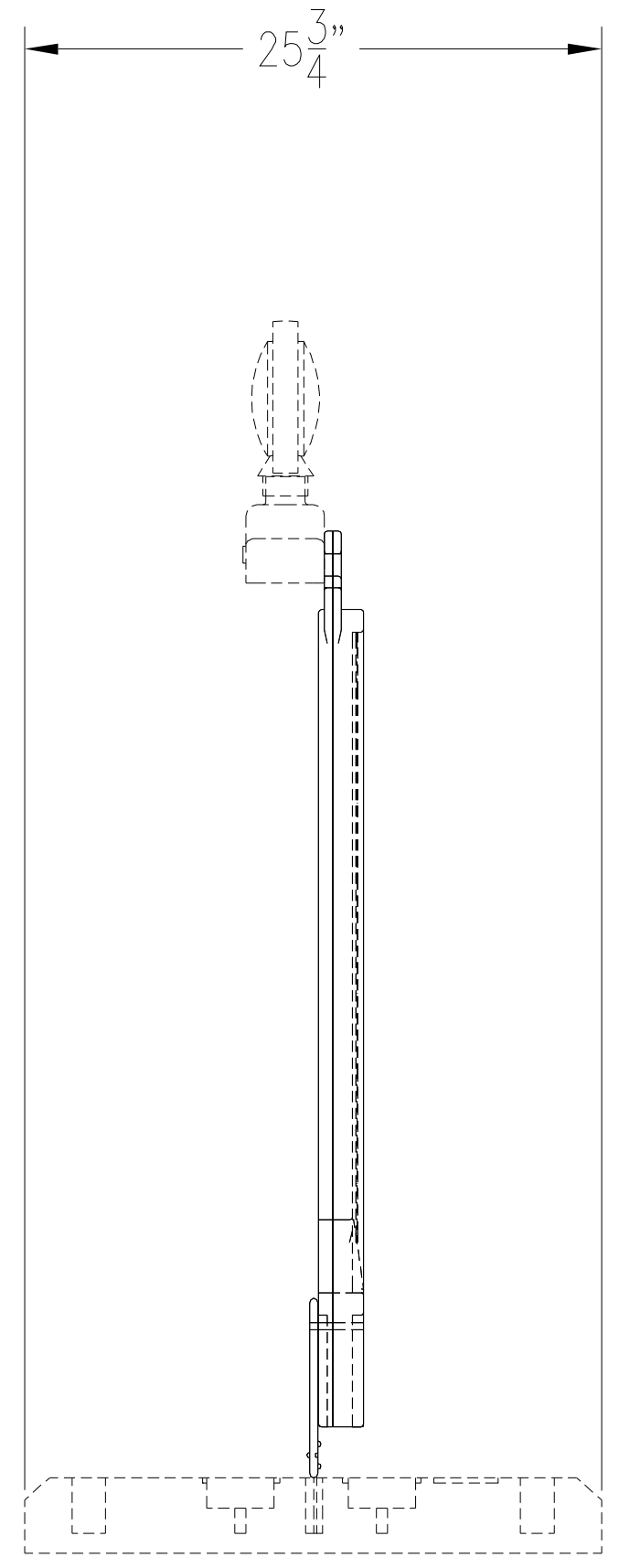
In Reply Refer To: HSSD/SS-36

This addendum updates the FHWA Acceptance letter WZ-36 to include updated detail drawings of the Big Foot II vertical panel. This modification utilizes the combination of the Bigfoot base accepted in WZ-36 and the vertical panel of Traffix Devices accepted in WZ-24 that are attached with a modified plastic panel that plugs into the rubber base. The modification involves the addition of a "bolted on" plastic panel to allow insertion into the "Bigfoot" base and this modification will not adversely affect the crashworthy performance of this device and it is acceptable for use on the National Highway System (NHS).

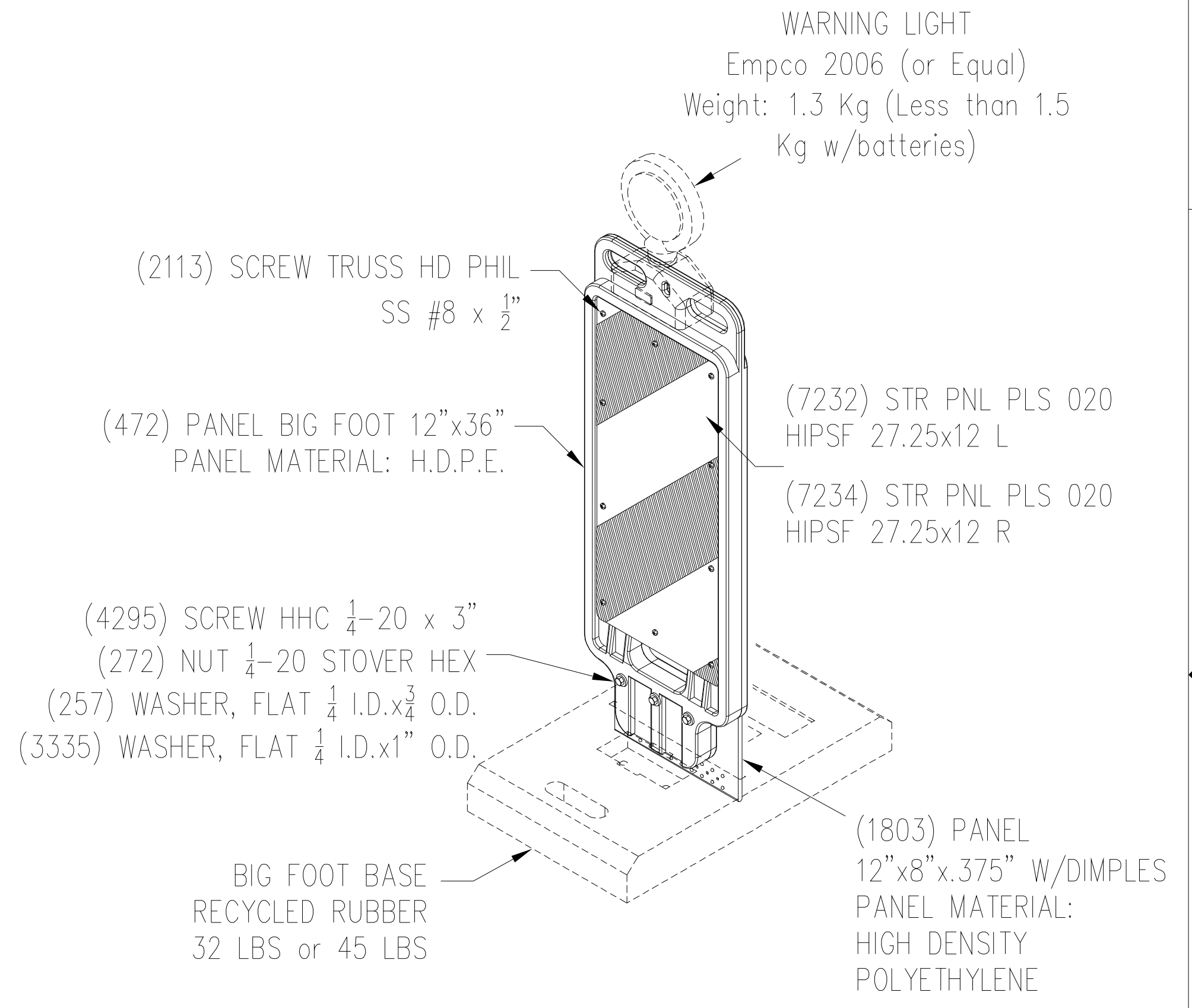
REVISIONS				
ZONE	REV	DESCRIPTION	DATE	APPROVED



FRONT ELEVATION VIEW



SIDE ELEVATION VIEW



SIDE ELEVATION VIEW

<b>PROTECTION SERVICES INC.</b> Traffic Control Equipment & Services 635 Lucknow Rd., Harrisburg, PA 17110 tel. (717) 236-9307				
<b>CONSTRUCTION BARRICADE BIG FOOT II HIPDF 36x12</b>				
SIZE	FSCM NO.	DWG NO.	BFII 01	
C				
SCALE 1/8"=1'-0"			SHEET 1 of 1	