



---

# Conceptual Plans for Land Use and Embayment Restoration— Kingston Ash Recovery Project

**Katie Kline**

**General Manager**

**Kingston Support Services, Kingston Ash Recovery Project**

August 2, 2011





# Agenda Overview

---

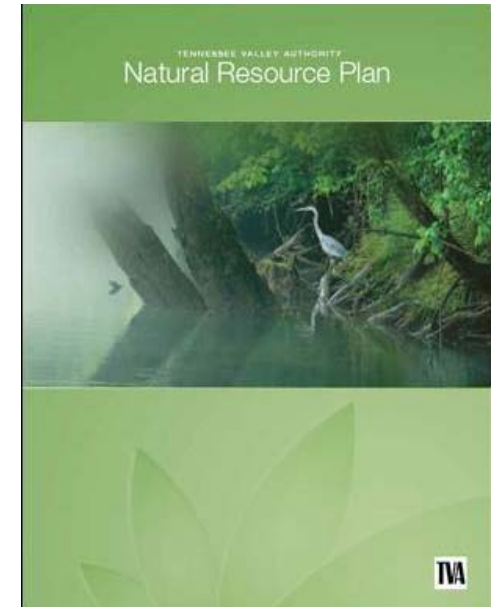
- TVA Integrated Natural Resources Plan — larger framework into which these concepts will fit
- Overview of conceptual plans
- Visit stations around room
  - learn more about plans
  - talk with experts who will help turn conceptual plans into reality
  - provide comments and suggestions for improvements



# **Natural Resource Plan**

---

- The NRP is a plan to guide TVA's responsible management of natural resources over the next 20 years, with a 5-year review cycle
- This document is the first integrated natural resource planning effort in TVA's history



- Integrate the objectives of the six resource areas
- Provide optimum public use benefits
- Balance competing and sometimes conflicting resource uses
- Provide clarity and transparency to the public

**Six Resource Areas****Included:**

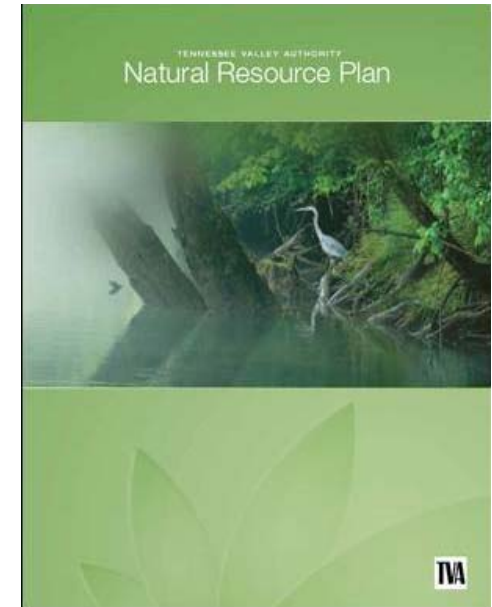
- Biological Resources
- Cultural Resources
- Recreation
- Water Resources
- Reservoir Lands Planning
- Public Engagement



- Similar to the Integrated Resource Plan, the NRP is a compass, not a precise navigation system
- The NRP provides direction and ranges for annual implementation decisions

# Status of the Plan

- The final NRP and EIS were published in July 2011
- The plan will go before the Board at the August 18<sup>th</sup> Board meeting in Knoxville
- Should it be endorsed, implementation will begin immediately
- Copies of the NRP and EIS and more information about the planning effort can be found at:
  - [www.tva.com/nrp](http://www.tva.com/nrp)



# **Overview of Conceptual Plans**

---



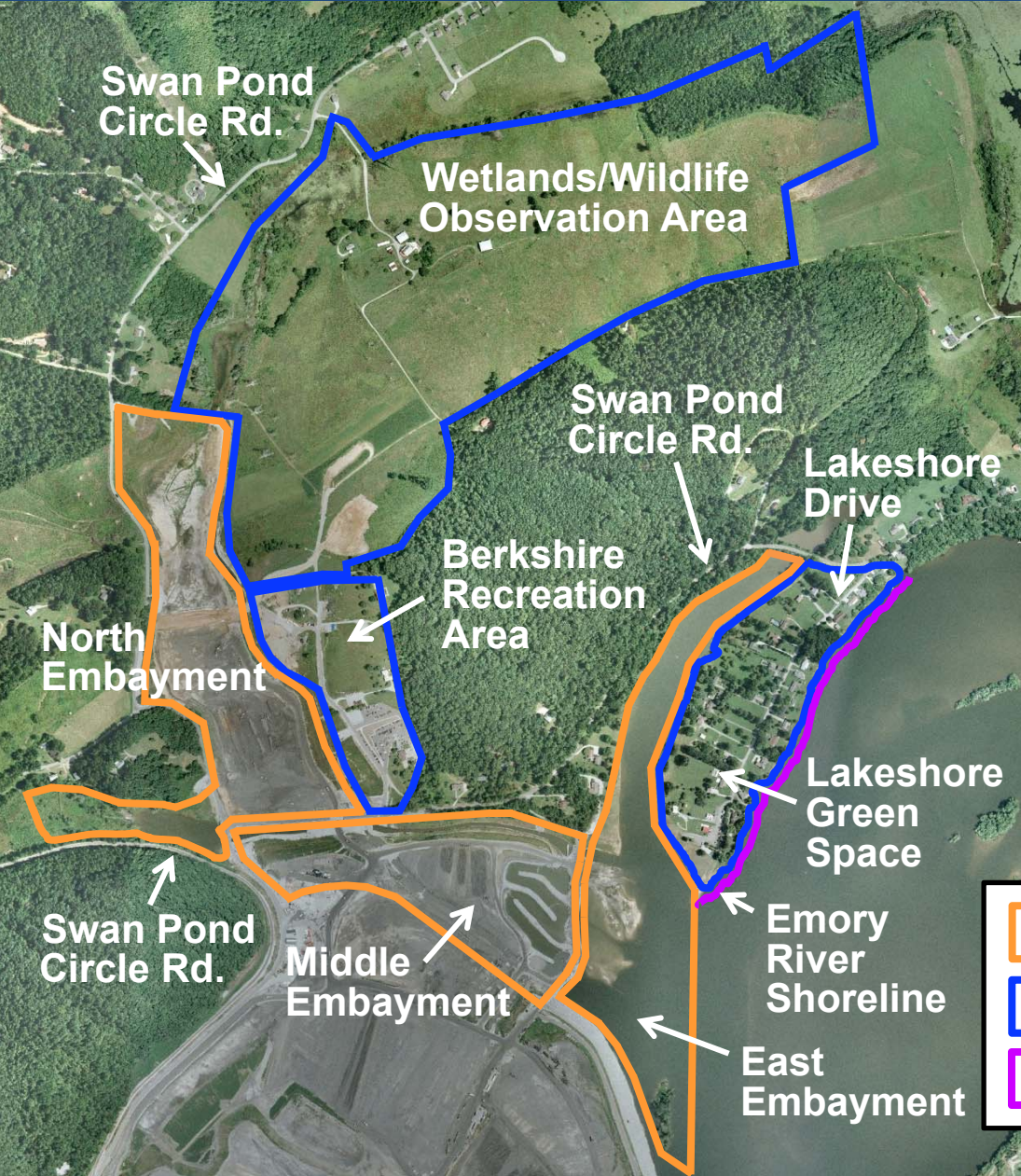






- Key milestones achieved
- Plan for ash removal from embayment approved — lots of progress in that area
- Construction of perimeter containment wall began on July 19<sup>th</sup>





- Embayment restoration
- Recreation Areas
- Wetlands/wildlife observation area

	<b>Restoration Areas</b>
	<b>Recreation Areas</b>
	<b>Emory River Shoreline</b>





- Lakeshore Green Space
- Berkshire Recreation Area
- North Embayment Wetlands and Wildlife Conservation Area





# Lakeshore Green Space



*Digitally Refined Photograph*

## Conceptual Draft Plan

*Not to Scale*



\*Existing Parking to Remain





# Present State of Site Proposed for Wetland/ Wildlife Area and Recreation Area





# North Embayment Wetlands and Wildlife Conservation Area - Conceptual

*Digitally Refined Photograph  
Not to Scale*

Toward  
Wetlands/  
Wildlife  
Trails



Swan Pond  
Circle Road



Shoreline  
Vegetation



Bottomland  
Hardwood  
Mix

Berm





# Birding and Wetlands Area Vegetation – Conceptual





# TVA Birding and Wetlands Trail - Conceptual



Portion of trail universally accessible

Swan Pond Circle Road

Boardwalk through forested wetland

Wildlife viewing platform

Trail head

Wildlife viewing platform

Hilltop observation area

Note\* - Several small footbridges will be needed along trail over drainage seeps

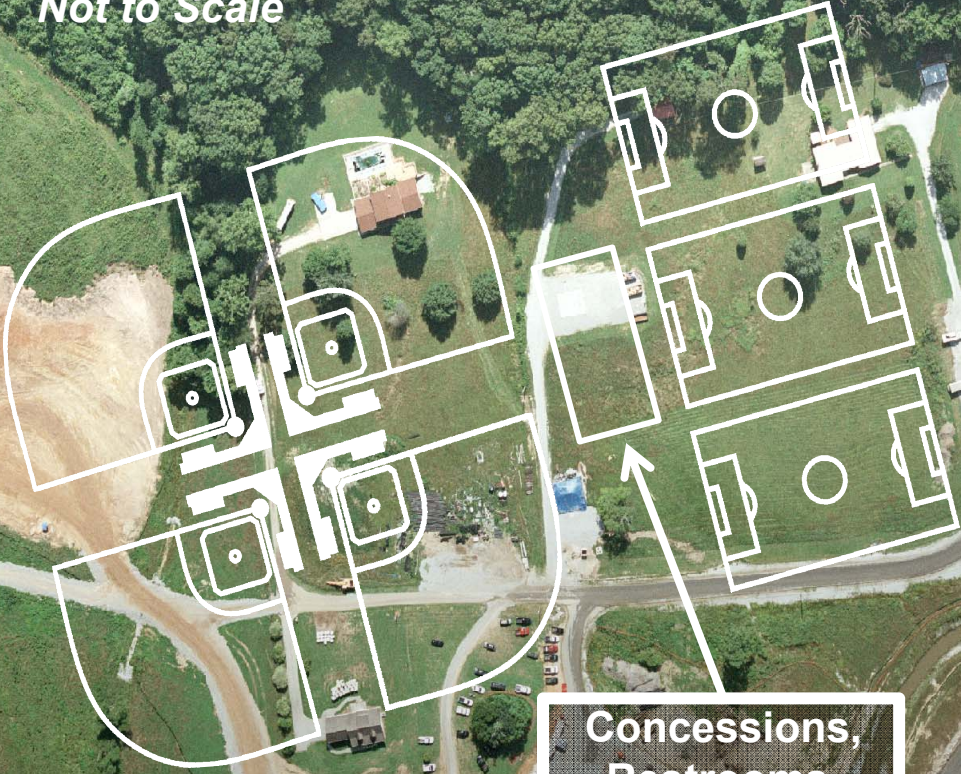
Birding trail

Note\* - Trail to incorporate interpretive aspects along entire trail system

Trail end



*Not to Scale*



**Concessions,  
Restrooms,  
&  
Storage**





# Berkshire Recreation Area - Conceptual

*Digitally Refined Photograph  
Not to Scale*

**Baseball  
Diamonds**

**Concessions, Restrooms, Storage**

**Soccer  
Fields**



# Perspective of North Embayment Wetlands/ Wildlife Area to Berkshire Recreation Area

- Photograph Digitally Refined -  
(Not to Scale)



Birding and Wetland Trail Head

Swan Pond Circle Road

Boardwalk through Wetland Wildlife Viewing Platform

Wildlife Viewing Platform

Birding Trail

Birding and Wetland Trail End

Swan Pond Circle Road

Shoreline Vegetation

Bottomland Hardwood Mix

Baseball Diamonds

Concessions, Restrooms, Storage

Soccer Fields

# What's Next?

---

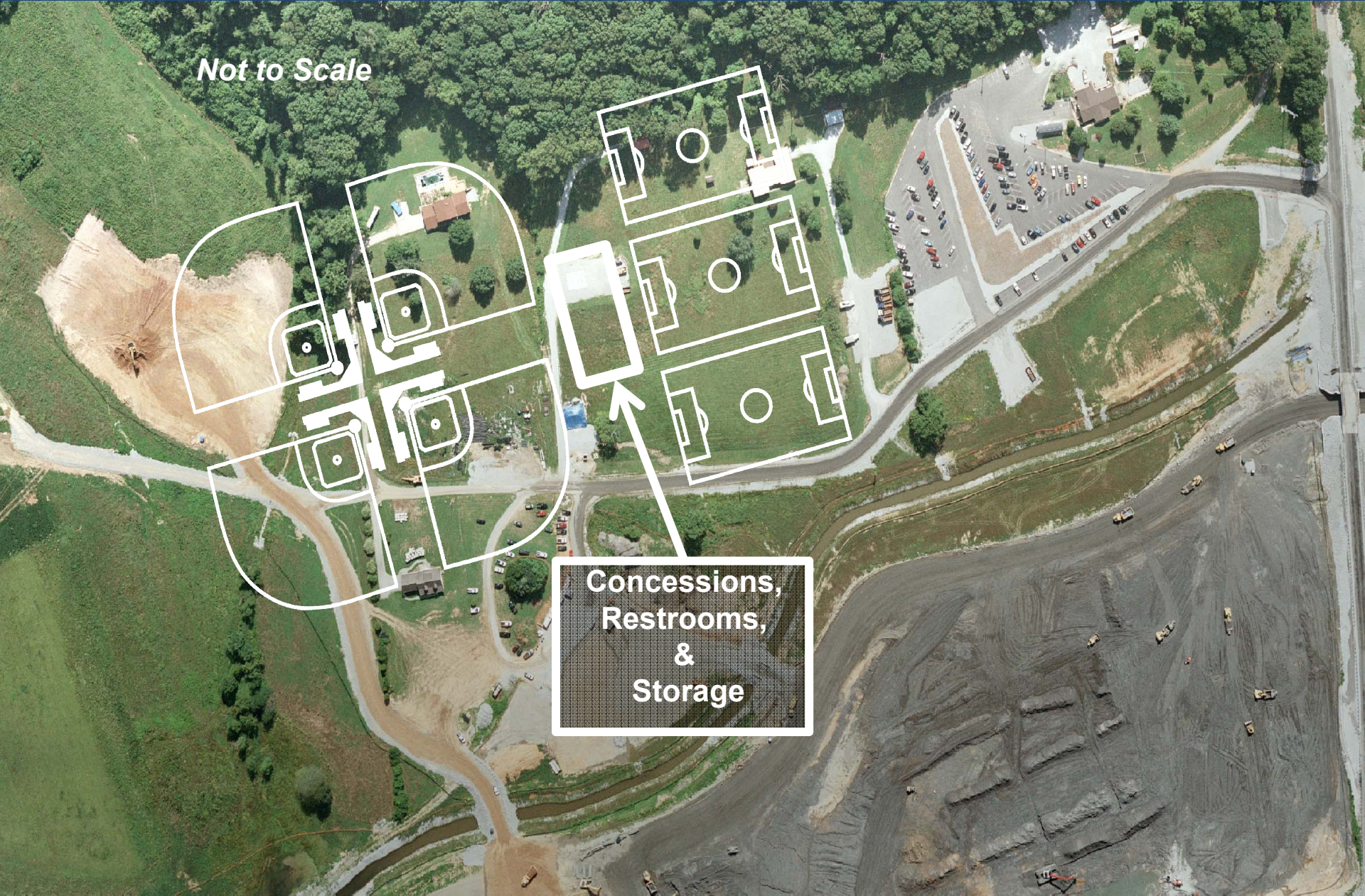
- Select an architecture/engineering firm to prepare a master plan
- We want public input on the draft Environmental Assessment
  - Talk with the specialists at the stations in the back
  - Make comments tonight
    - ❖ court reporter and cards
  - TVA's website (<http://www.tva.gov/environment/reports/>)
    - ❖ send comments electronically to [KingstonComm@tva.gov](mailto:KingstonComm@tva.gov)
- Initial preparations will get underway soon
- Work will be done on a schedule that takes advantage of the best seasons for planting trees and wetland flora
- Timing
  - Lakeshore Drive area – 2012
  - Wetlands/wildlife observation areas and ball fields – 2014





# Berkshire Recreation Area - Conceptual

*Not to Scale*



**Concessions,  
Restrooms,  
&  
Storage**





# Berkshire Recreation Area - Conceptual

*Digitally Refined Photograph  
Not to Scale*

**Baseball  
Diamonds**

**Concessions, Restrooms, Storage**

**Soccer  
Fields**

