

Module 4

USMC Organizational Structure



Goals and Objectives

- Understand the dual chains of command in the Department of Defense and when each is used
- Describe the Total Force Concept
- Name the 3 main components of the Marine Corps
- Describe the basic war fighting structure of the operating forces
- Describe the Marine Corps Reserves mission in relation to the operating forces



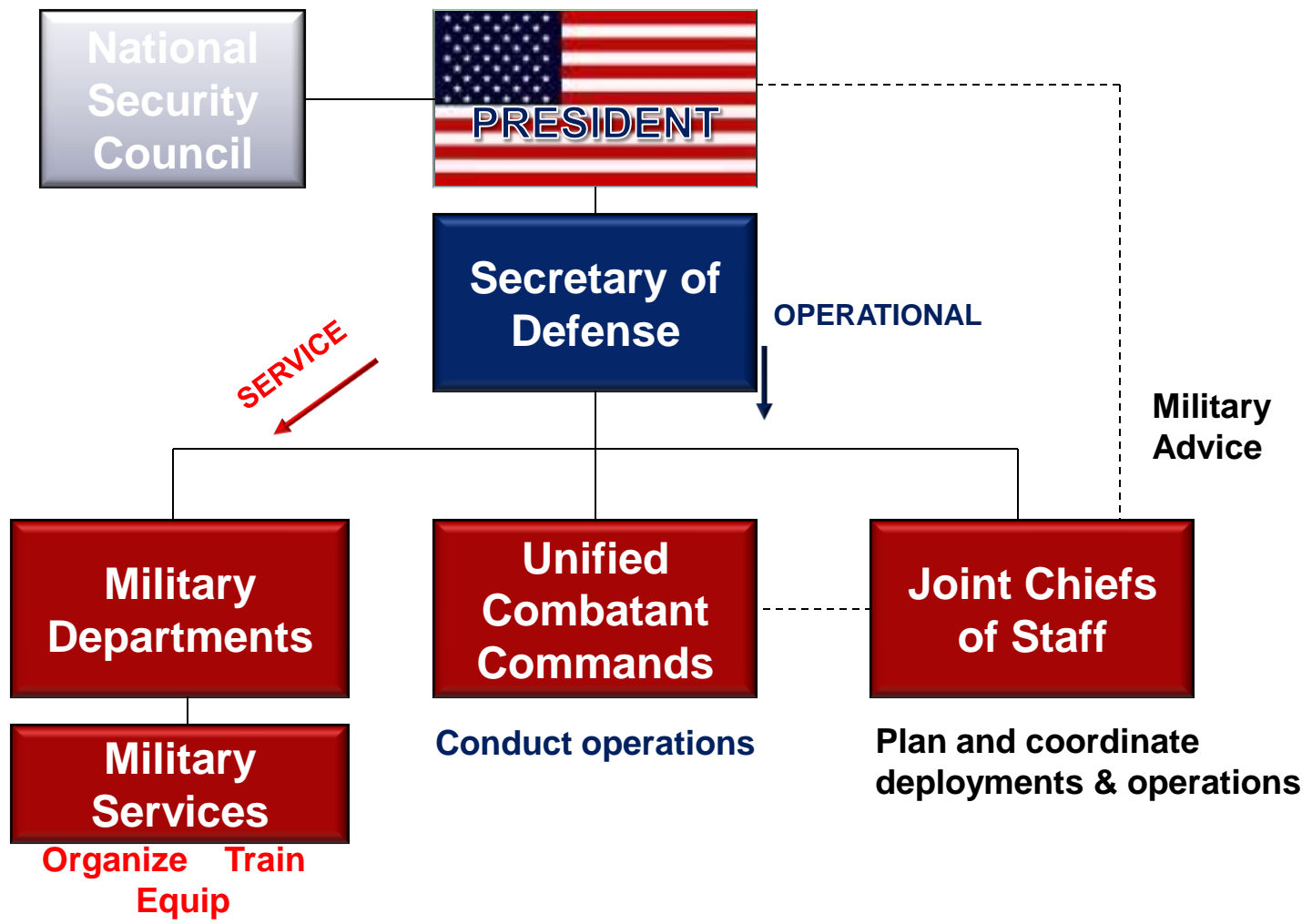
Module 4 Outline

- Dept of Defense Dual Chains of Command
 - Service: Military Dept Secretaries and Service Chiefs
 - Operational: President to SecDef to Unified Combatant Commanders
- Total Force Concept/Marine Demographics
- Marine Corps components
 - Operating Forces
 - MAGTF structure
 - 4 elements
 - 4 types
 - 2 service-level combatant commands
 - Marine Forces Command
 - Marine Forces Pacific
 - Reserve Forces
 - MAGTF structure
 - 1 command: Marine Forces Reserves
 - Supporting Establishment
 - HQMC
 - Supporting commands
 - Bases and stations



Military Command Structure

National Command Authority





Unified Combatant Commands

THE WORLD 1:60,000,000

THE WORLD WITH COMMANDERS' AREAS OF RESPONSIBILITY

EDITION 8 NGA

SERIES 1107

BASED ON
UNIFIED COMMAND PLAN
17 DECEMBER 2008



SERIES 1107
EDITION 8 NGA



PREPARED AND PUBLISHED BY THE
NATIONAL GEOSPATIAL-INTELLIGENCE AGENCY
ST. LOUIS, MO
Map information as of 2008

State of Alaska assigned to USNORTHCOM's
Area of Responsibility. Forces based in Alaska
remain assigned to USNORTHCOM.

1:60,000,000

MILLER CYLINDRICAL PROJECTION

The 1950 Israeli proclamation that
Jerusalem be the national capital is
not recognized by the United States.

* West Bank and Gaza Strip - "Israeli-occupied with current
status subject to the Israeli - Palestinian Interim Agreement -"
permanent status to be determined through further negotiation."

© COPYRIGHT 2008 BY THE UNITED STATES GOVERNMENT
NO COPYRIGHT CLAIMED UNDER TITLE 17 U.S.C.

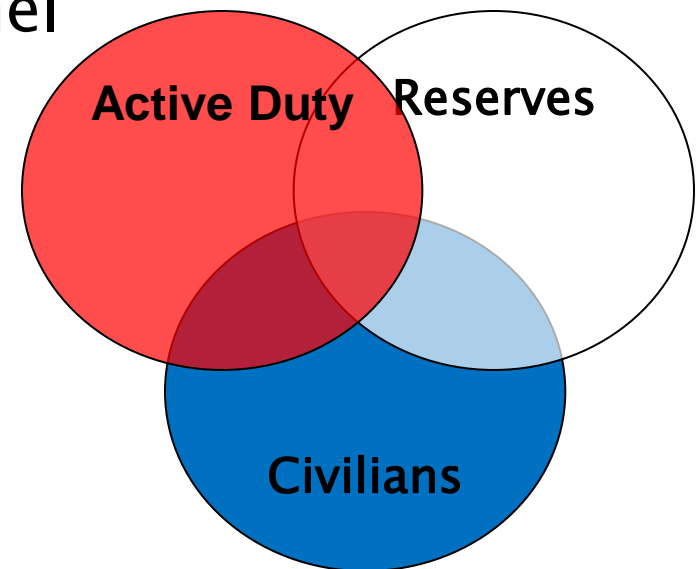
MAP EFFECTIVE 17 DECEMBER 2008

USERS SHOULD REFER CORRECTIONS, ADDITIONS, AND COMMENTS TO THE NGA ENTERPRISE SERVICE DESK: 1-800-455-0899. COMMERCIAL: 301-227-9811. DSN: 287-9811.
UNCLASSIFIED EMAIL: ENTERPRISESERVICECENTER@NGA.MIL, SIPRNET: ESC@NSC.NGA.SMIL.MIL
OR WRITE TO: DIRECTOR, NATIONAL GEOSPATIAL-INTELLIGENCE AGENCY, ATTN: ESC, MAIL STOP D-240, 4600 SANGAMORE ROAD, BETHESDA, MD 20816-5003.

THE REPRESENTATION OF BOUNDARIES
IS NOT NECESSARILY AUTHORITATIVE.

Total Force Concept— One Team, One Fight

- Total Force concept became DoD policy in 1974
- Mission success depends on the effective integration of everyone
 - All branches of service
 - All types of personnel



Breakdown

- 4 Marines to a Fire Team (4)



- 3 Fire Teams to a Squad (12)



- 4 Squads to a Platoon (48)



- 4 Platoons to a Company (192)
- 5 Companies to a Battalion or Squadron (960)
- 5 Battalions or Squadrons to a Regiment, Air Group, or Combat Logistics Group (4800)
- 3 Regiments form a Division, Wing or a Logistics Group (15000)



Marine Divisions

- 1st Marine Division
Camp Pendleton, CA



- 2nd Marine Division
Camp Lejeune, NC



- 3rd Marine Division
Okinawa, Japan



Marine Air Wings

- 1st Marine Air Wing
Okinawa, Japan



- 2nd Marine Air Wing
Cherry Point, NC



- 3rd Marine Air Wing
Miramar, CA



Marine Logistic Groups

- 1st Marine Logistics Group
Camp Pendleton, CA



- 2nd Marine Logistics Group
Camp Lejeune, NC



- 3rd Marine Logistics Group
Okinawa, JA



Marine Expeditionary Force

- 1st Marine Expeditionary Force
Camp Pendleton, CA
1stMarDiv, 1stMLG, 3rdMAW



- 2nd Marine Expeditionary Force
Camp Lejeune, NC
2ndMarDiv, 2ndMLG, 2ndMAW



- 3rd Marine Expeditionary Force
Okinawa, JA
3rdMarDiv, 3rdMLG, 1stMAW



RECAP

- Who is the Commander in Chief?
- How many Fire-Teams in a Marine Rifle Squad?
- Where is 3rdMAW located?
- Where is 1stMarDiv located?
- Who is the Commander of US Central Command



Operating Forces



- Marine Air Ground Task Force (MAGTF) structure
 - Unique combined-arms structure
 - Scalable and sustainable to fit the mission
 - Trained and equipped for quick response time
 - 4 elements of all MAGTFs
 - Command Combat Element (CE)
 - Ground Combat Element (GCE)
 - Air Combat Element (ACE)
 - Logistics Combat Element (LCE)

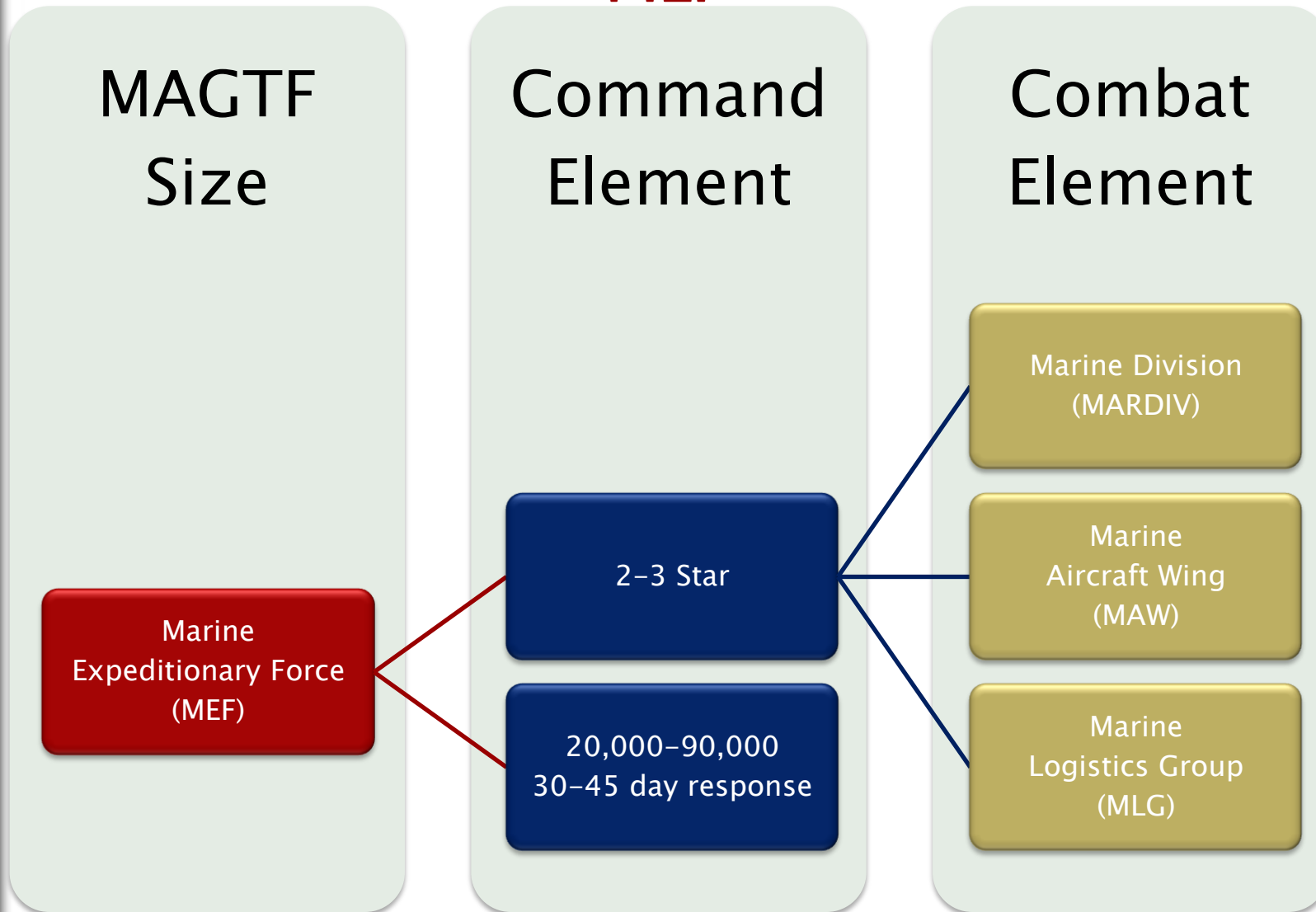


Operating Forces

MAGTF Structure: 4 Types



MEF



Operating Forces

MAGTF Structure: 4 Types



MEB

MAGTF
Size

Command
Element

Combat
Element

Marine
Expeditionary Brigade
(MEB)

1-2 Star

3,000-20,000
5-24 day response

Marine Regiment
(MARREG)

Marine
Aircraft Group
(MAG)

Combat
Logistics Regiment
(CLG)



Operating Forces

MAGTF Structure: 4 Types



MEU

MAGTF
Size

Command
Element

Combat
Element

Marine
Expeditionary Unit
(MEU)

Colonel

1,500-3000
6 hour response

Battalion
Landing Team
(BLT)

Reinforced
Helicopter/Fixed Wing
Squadron

Combat
Logistics Battalion
(CLB)

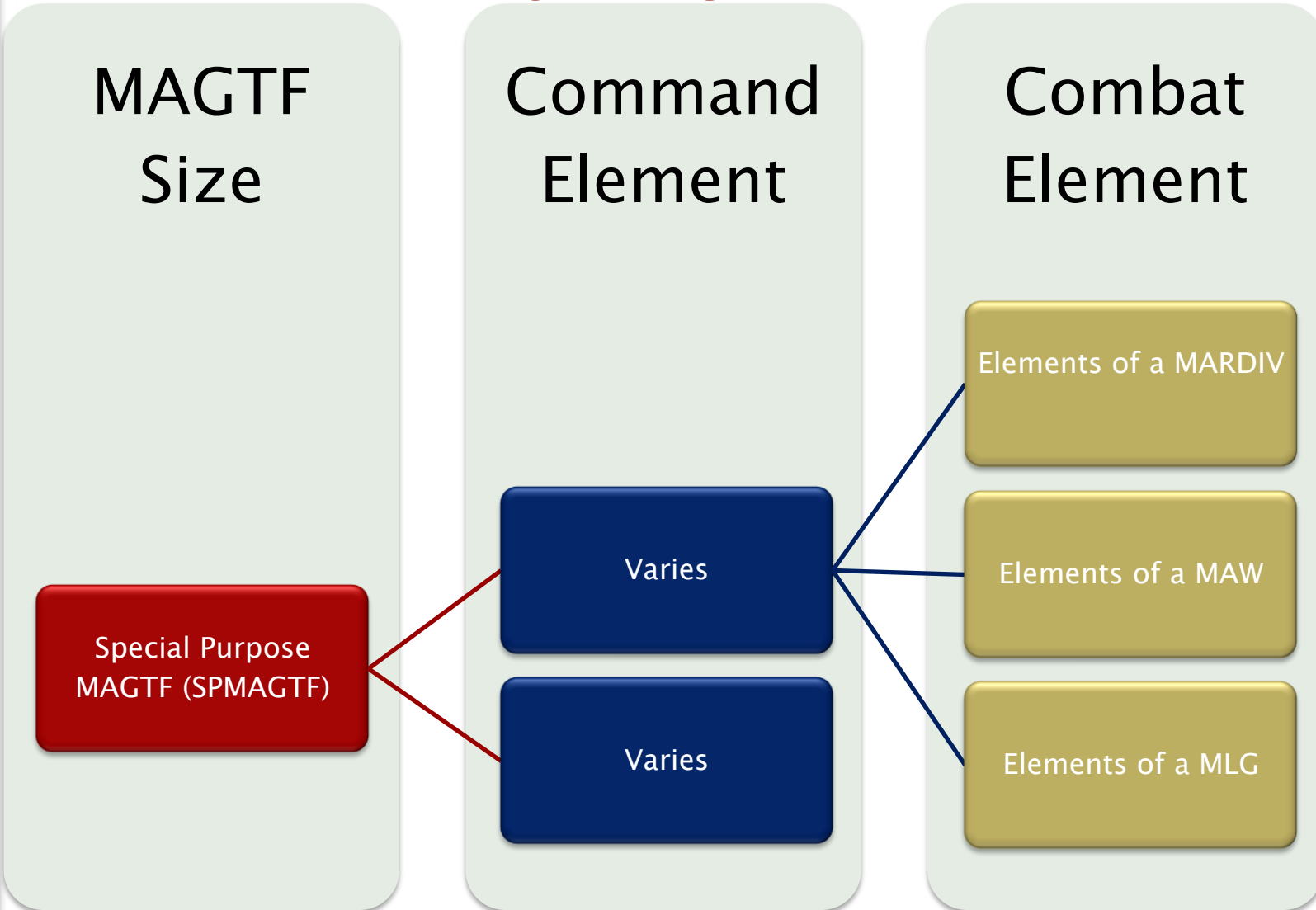


Operating Forces

MAGTF Structure: 4 Types



SPMAGTF



Marine Corps Combatant Commands

- Two primary USMC Operating Forces augmented by the USMC Reserve Force
 - U.S. Marine Corps Forces Command (MARFORCOM)
 - U.S. Marine Corps Forces, Pacific (MARFORPAC)
- Used by unified Combatant Commanders as a forward-presence, crisis-response, and operational fighting force



MARFORCOM



MARFORPAC



Marine Forces Reserve “Ready, Relevant, Responsive”

- Mission = reinforce and augment active duty forces for sustained operations
- Reserves are trained to same rigorous standards
- MARFORRES is structured like a MAGTF: air, ground, logistics



MARFORRES



LtGen Kelly



BGen Lariviere



MajGen Croley



MajGen(Sel) Garrett



Col McCarthy

4 Types of Reserve Duty

- Selected Marine Corps Reserve (SMCR)
- Individual Ready Reserve (IRR)
- Individual Mobilization Augmentee (IMA)
- Active Reserve (AR)



RECAP

- What does MAGTF stand for?
- How many types of MAGTF are there?
- What would be the rank of the Marine that would command a MEU?
- What size air combat element would you have in a MEF?



USMC Supporting Establishment

- Supports the operational forces and increases the overall combat readiness of the Marine Corps
- Provide strategic logistics to recruit, train, equip, and provision the force
- Includes the following:
 - HQMC
 - Supporting commands
 - Installations

**Civilian Marines are a significant force
in the supporting establishment**



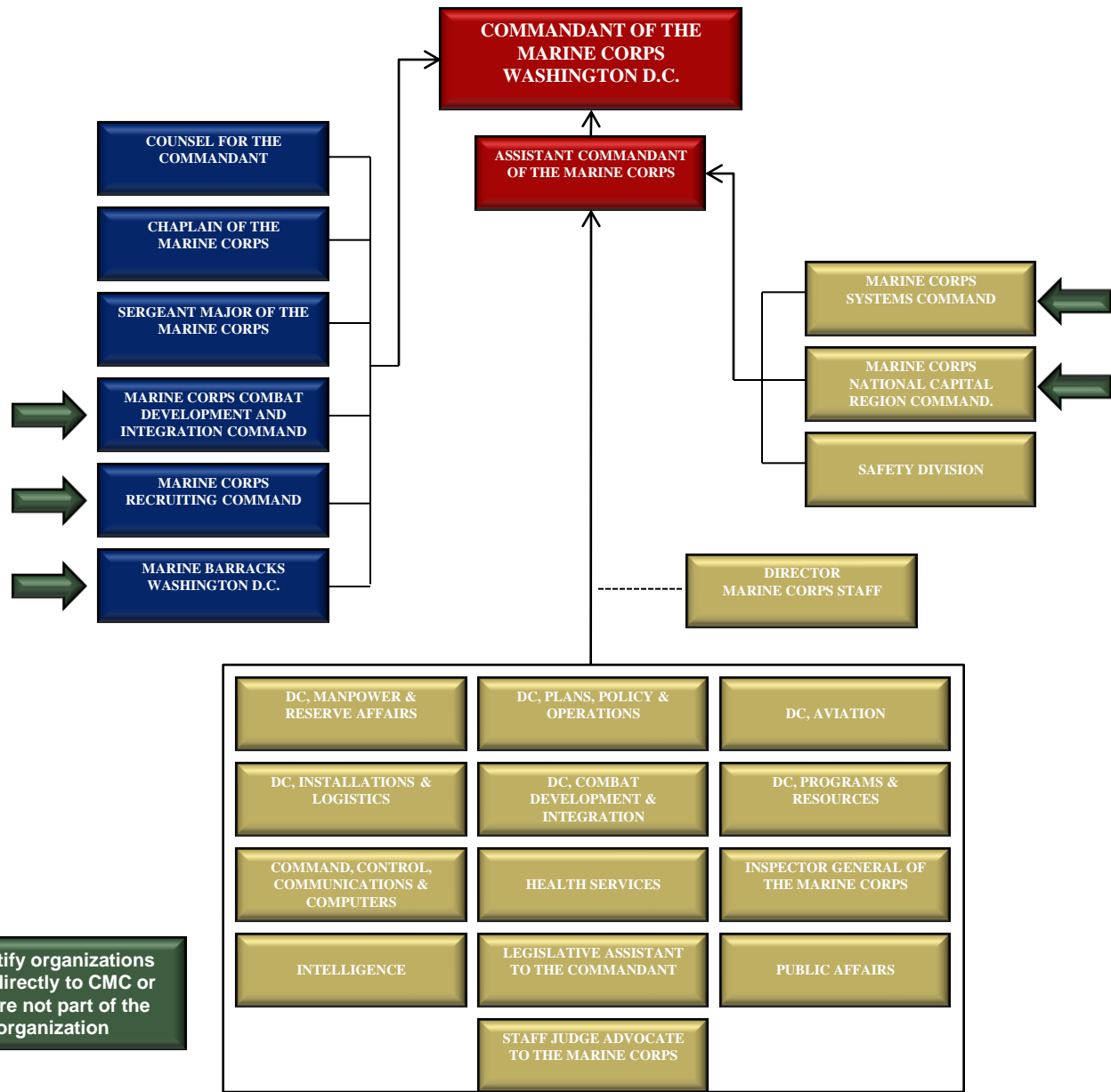
Headquarters and Supporting Commands

Overarching Mission: To support the war fighting capabilities of the Operating Forces

Headquarters, U.S. Marine Corps	Marine Corps Recruiting Command	Marine Corps Combat Development & Integration Command	Marine Corps Logistics Command	Marine Corps Systems Command
Organize, train, and equip the force, to include the administration discipline, internal organization training, requirements, efficiency, and readiness of the service	Recruit the highest quality young American and train them to become United States Marines	Develop fully integrated Marine Corps war fighting capabilities, to include doctrine, organization, training and education, material	Provide worldwide, integrated logistics/supply chain and distribution management, depot level maintenance management, and strategic prepositioning capability	Manage the acquisition and sustainment of systems and equipment used by the Operating Forces



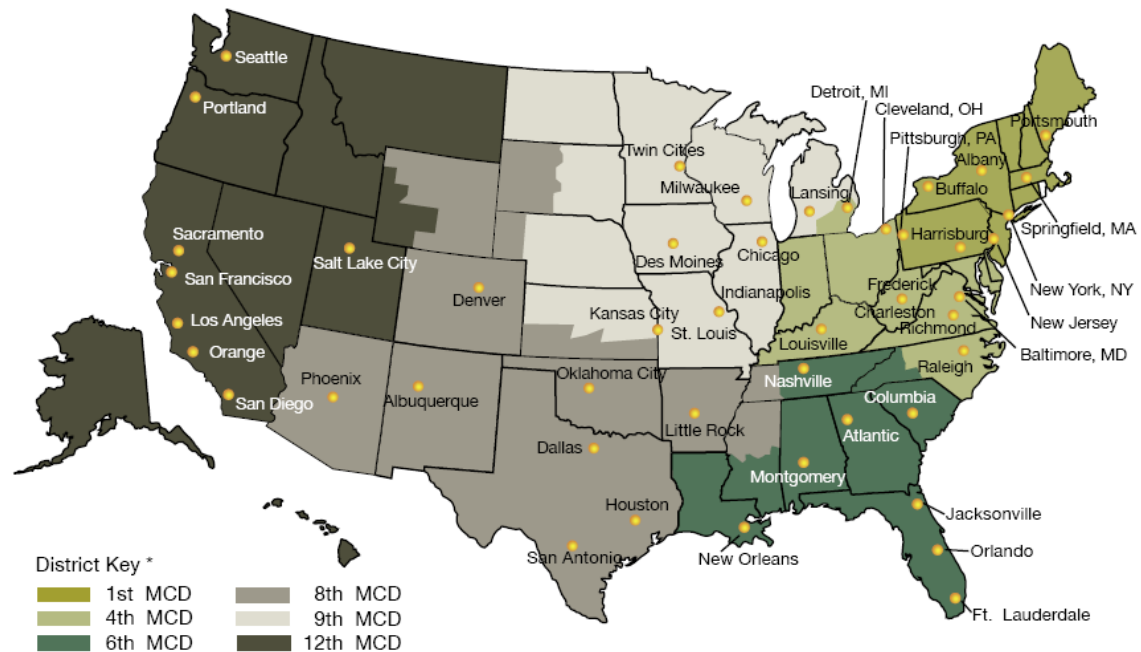
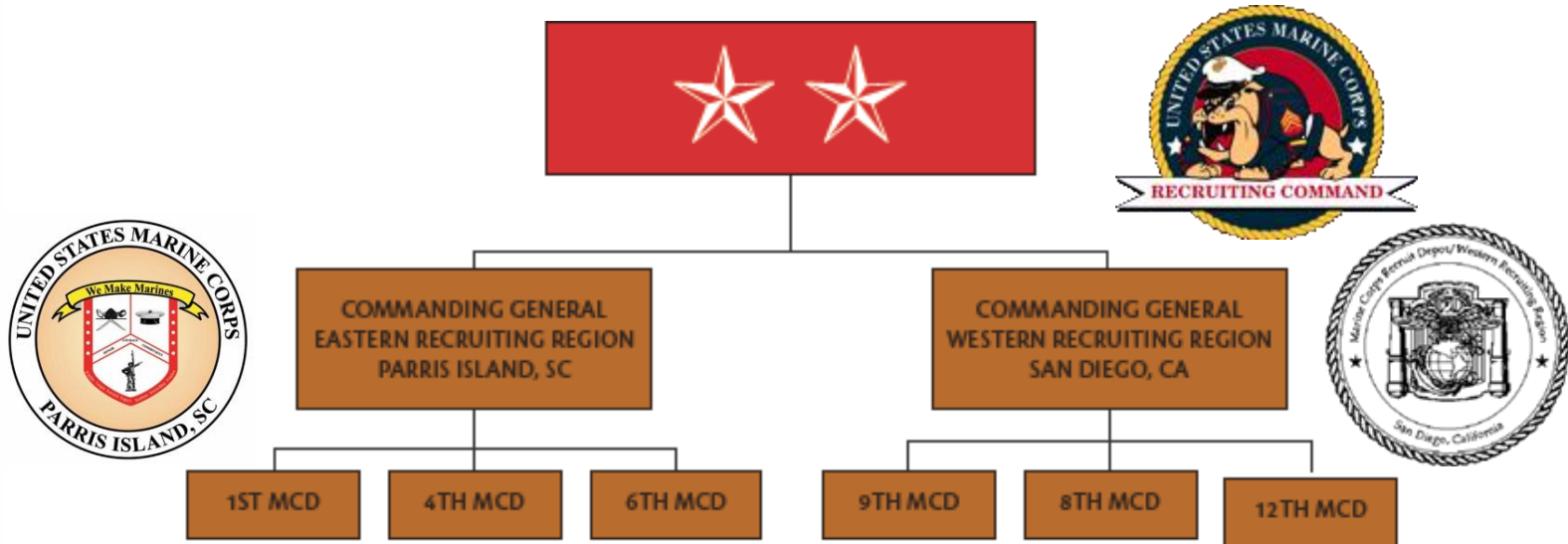
Headquarters Marine Corps



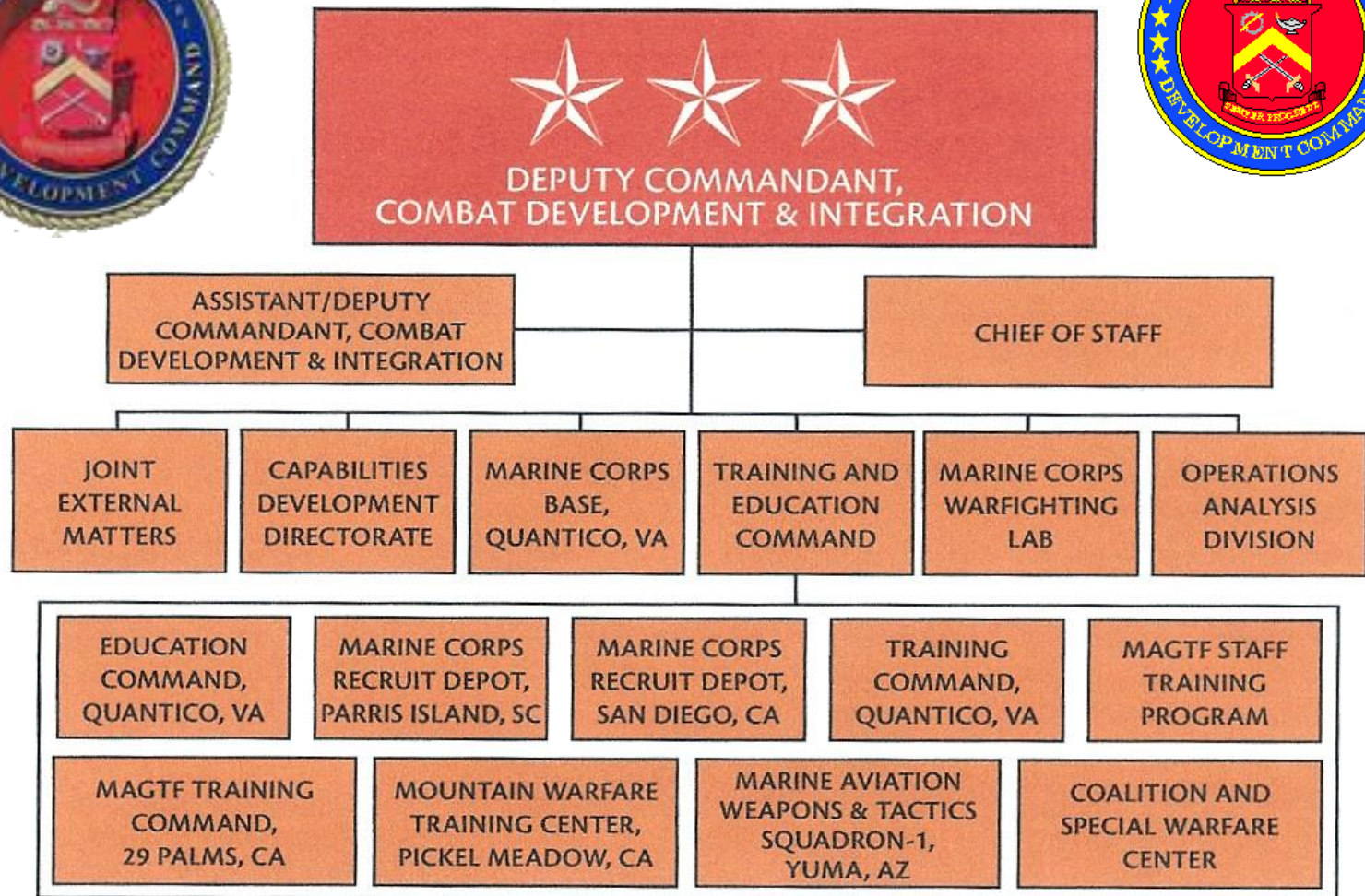
Arrows identify organizations that report directly to CMC or ACMC but are not part of the HQMC organization



Marine Corps Recruiting Command

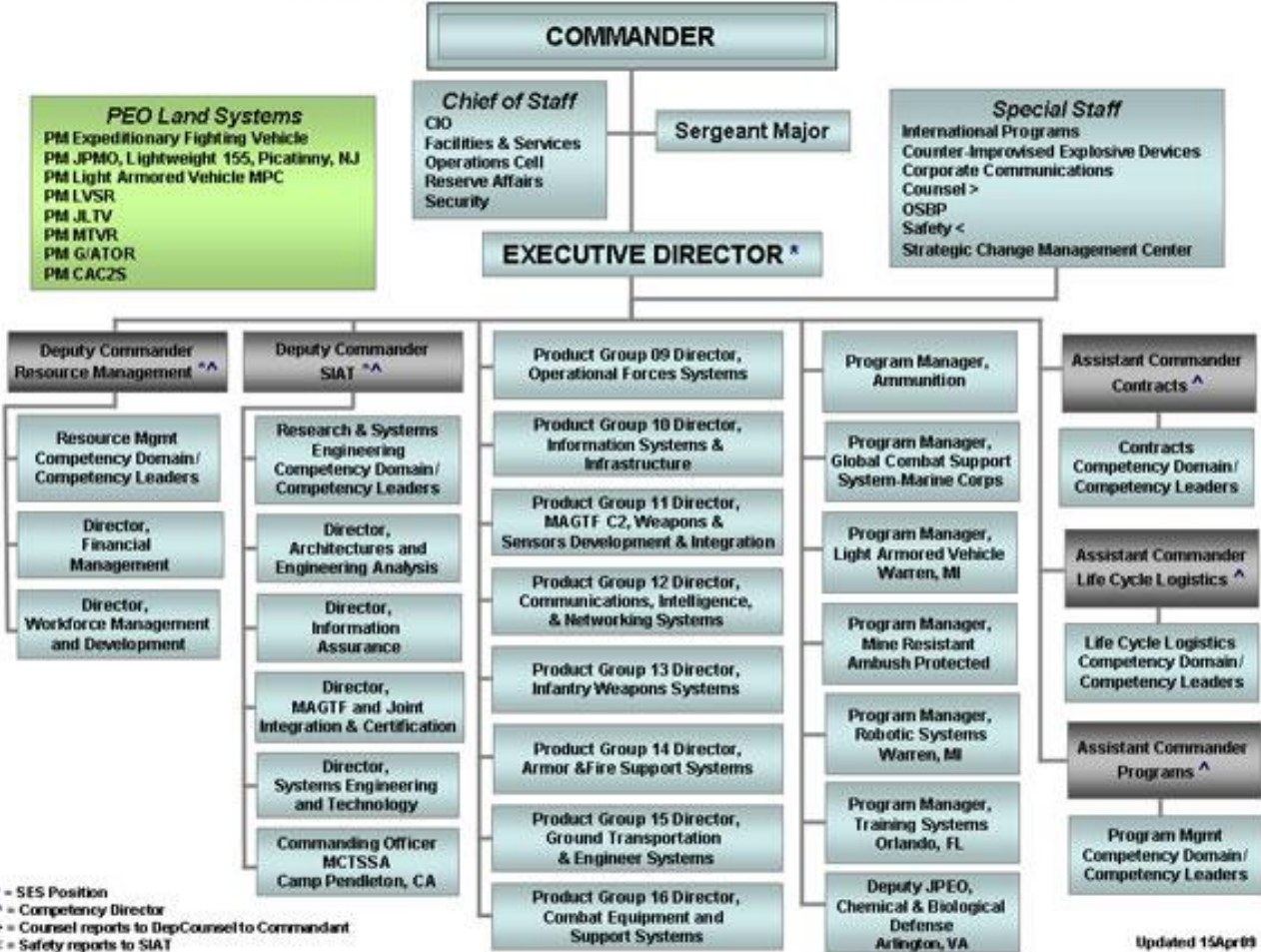


Marine Corps Combat Development Command (MCCDC)



Marine Corps Systems Command (MCSC)

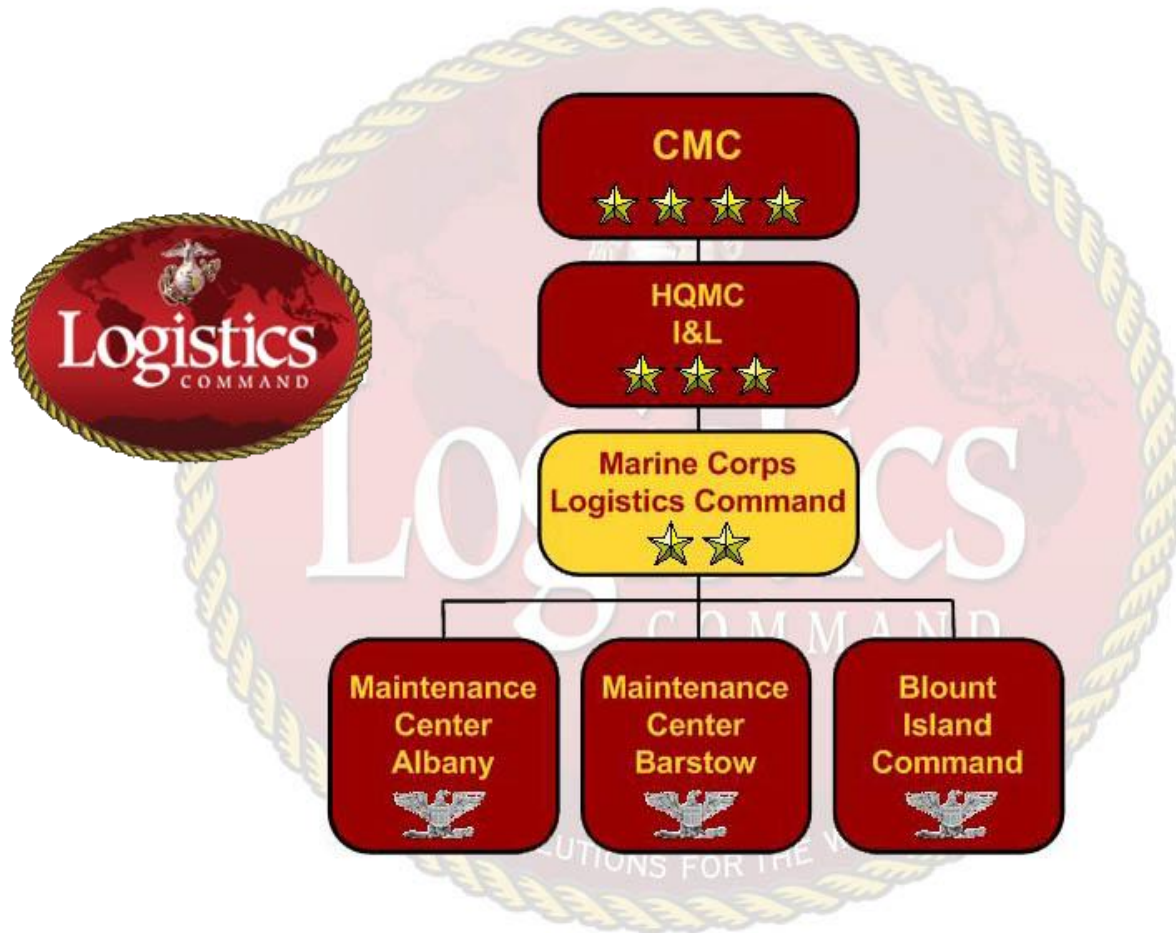
MARCORSYSCOM ORGANIZATION



Updated 15Apr09

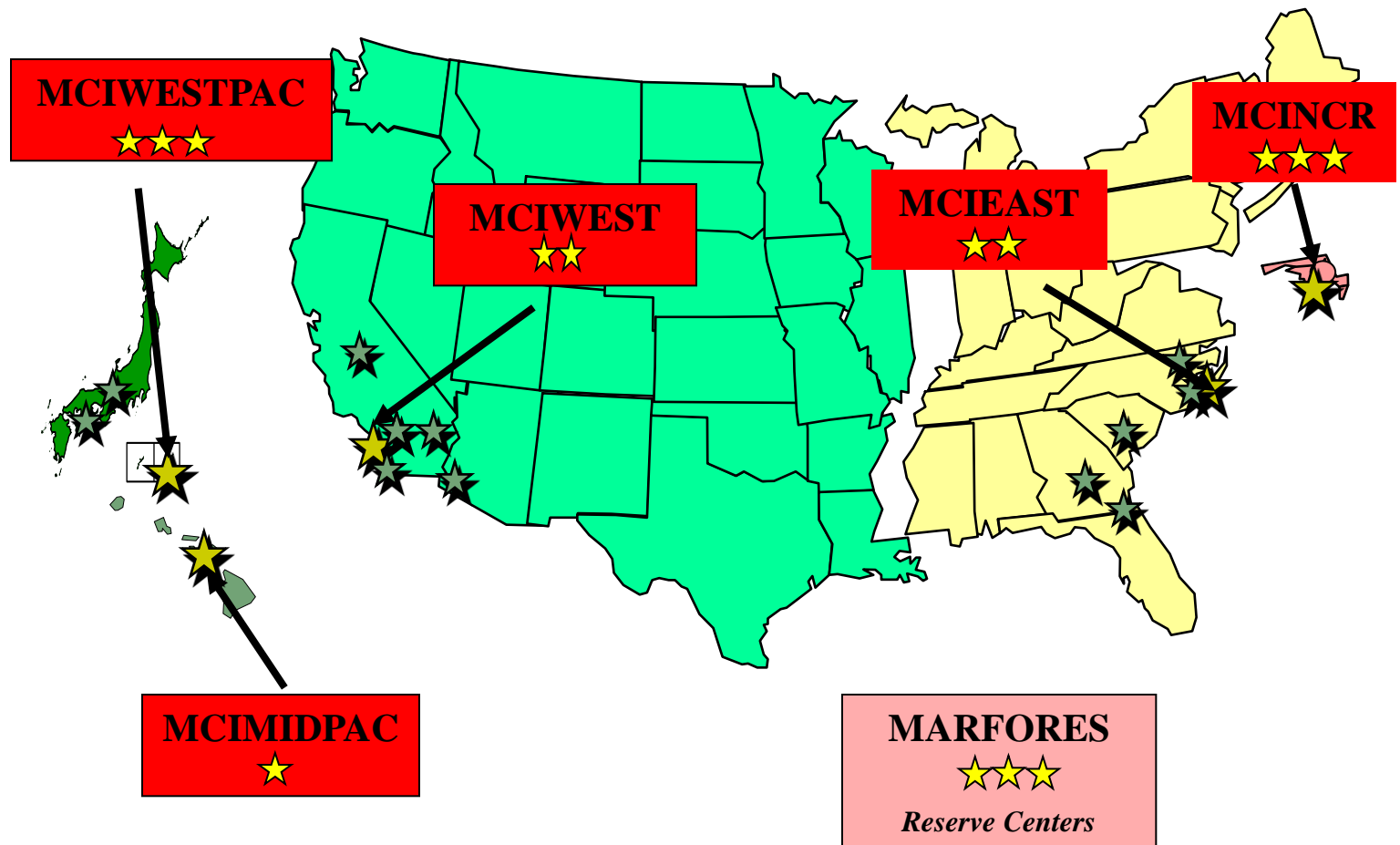


Marine Corps Logistics Command



Marine Corps Installations

- The “5th Element”
- 5 Regional Installation Commands
- 15 bases and stations



Marine Barracks 8th & I/ Marine Corps Institute

- Barracks Organizations
 - Alpha Company
 - Ceremonial Marchers
 - Silent Drill Platoon
 - Color Guard
 - Bravo Company
 - Ceremonial Marchers
 - Body Bearers
 - Battle Color Detachment
 - Marine Corps Institute Co.
 - Headquarters and Service Co.
 - Drum and Bugle Corps Co.
 - U.S. Marine Band



Active Duty Demographics as of October 2009

- 202,786 end strength
- 72% are 25 or younger
 - 15% are teenagers
 - 27% are under 21
- 47% are LCpl or below
 - other services are between 20% and 23%
- 40% are married
 - next closest is Navy at 55%
- 1 Officer per 10 Enlisted
 - lowest ratio of all services
- 98% of all Marines hold at least a high school degree or equivalent
- 90% of Officers hold bachelor's degrees, master's degrees, or doctorates



Reserve Forces Demographics as of Jan 2009

- 99,600 Ready Reserve Marines
 - 40% are Selected Reserves (SMCR, IMA, AR)
 - 60% are Individual Ready Reserves (IRR)
- Avg Age is 26 (Selected) and 27 (IRR)
- 34% Selected Reserves (42% IRR) are married
- 1 Officer per 9 Enlisted in Selected Reserves
- 99% of all Reserve Marines hold a high school degree or equivalent
- 89% of Selected Reserve Officers (93% of IRR) hold bachelor's degrees, master's degrees, or doctorates



RECAP

- What are the three components of the Marine Corps?
- Where is HQMC located?
- How many Recruiting Regions are there?

