



U. S. Department
of Transportation

Alaskan Region

222 W. 7th Avenue #14
Anchorage, Alaska
99513-7587

**Federal Aviation
Administration**

January 5, 2009

Mr. Harvey M. Douthit, PE, Design Section Chief
State of Alaska, DOT & PF
P.O. Box 196960
Anchorage, Alaska 99519-6960

Iliamna Airport
Airport Layout Plan Approval
Airspace Case 07-AAL-93NRA

We have completed our review of the Iliamna Airport Layout Plan (ALP), and find it acceptable from a planning standpoint. However, several comments in our 2007 ALP review have not been addressed. Please consider the following in your next ALP update:

- Please create a Land Use Drawing as per 150/5070-6B. Include an Airport Leaseholders table (e.g. figure 3 in the MP) and include a column for "Use".
- Flight Standards has recommended ½ SM visibility and Approach Lighting Systems (ALS) for runways 35 and 25. Part of your property acquisition justification is through these weather minimums improvements. Please update your Part 77 drawings to indicate surfaces in accordance with ½ visibility minimums. Please draw the ALS.
- Aerial photography shows properties 2,000' and 5,000' from runway 25 threshold. Please show all structures, its use and their future disposition.
- Currently the airspace for future waterlanes is not being protected. Please include threshold coordinates and the drawings for the inner portion of the approach surface as soon as possible.
- Please provide a schedule for the property acquisition and buildings to be removed.
- Please show the recommended avigation easement in the ALP in and around Eastwind Lake.
- Please show and label the following: AWOS, NDB/DME, and DF antenna.

No Modifications to Standards are approved with this ALP approval. The approval indicated by my signature is given subject to the condition that the proposed airport development that requires environmental processing shall not be undertaken without prior written environmental approval by the FAA.

This approval considers only the safety, utility, and efficiency of the airport. We encourage you to work with appropriate agencies to pursue adoption of height and zoning restrictions. This approval does not represent a commitment to provide financial assistance to implement the proposed plan. FAA assistance in any development or its approval for any development will be determined at the time of request, based on the existing regulations, project justification, and eligibility at the time of the request.

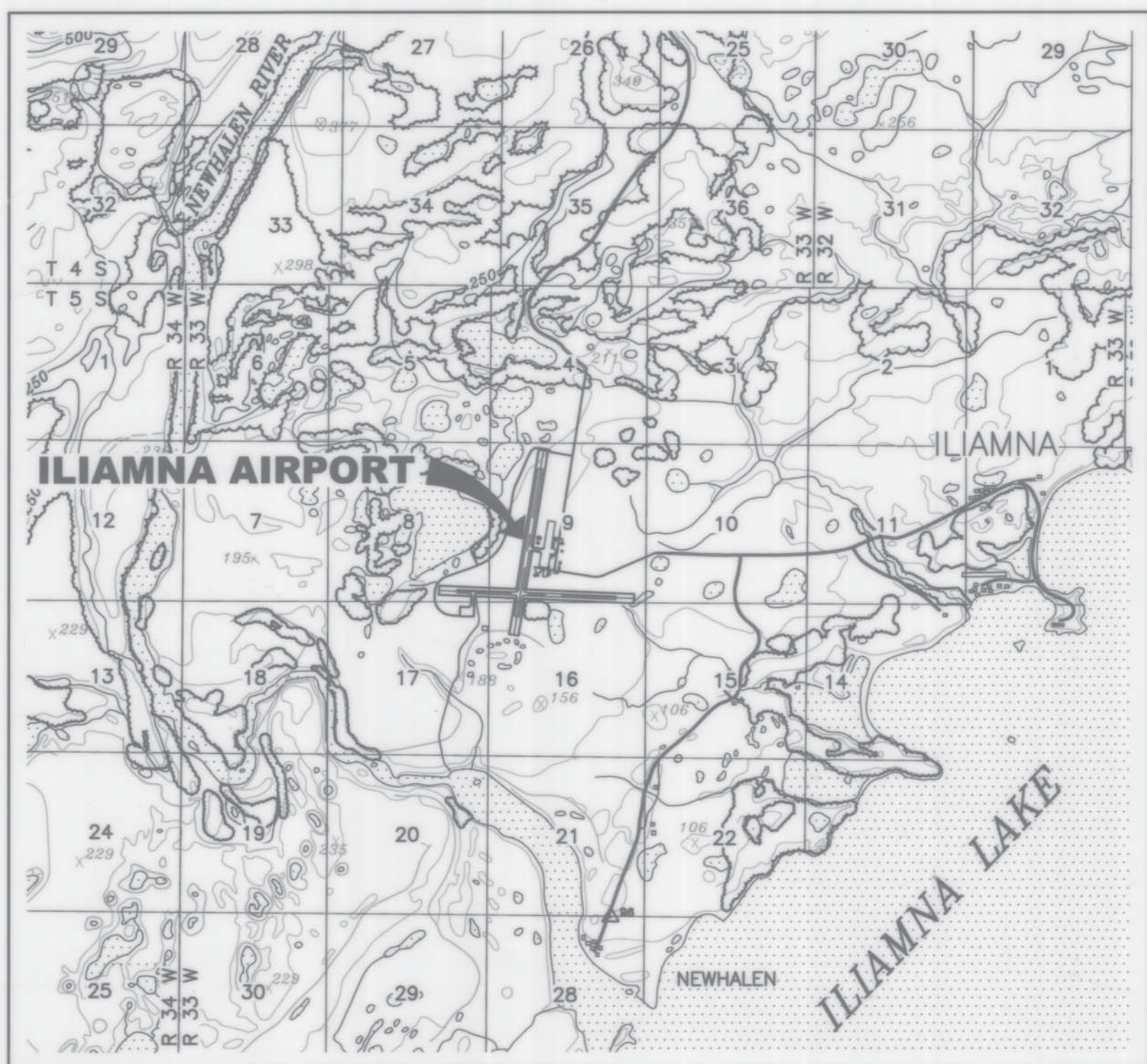
Please attach this letter to the enclosed ALP and retain it in your files for future use. If you have any questions, please contact Mr. Gabriel Mahns at 271-3665.

Sincerely,

Pat Oien, Lead Planner
Airports Division

Attachment
Iliamna ALP

Date Plotted: 15/23/2008 8:15 AM, Wilheim, Laura
 Sheet: 1
 Layout Name: W:\07072\0000011356_ILIAMNA_AIRPORT_FINAL_SUBMITTAL_5-6-08_ILIAMNA_AIR_SHEET-01.DWG
 File Name:

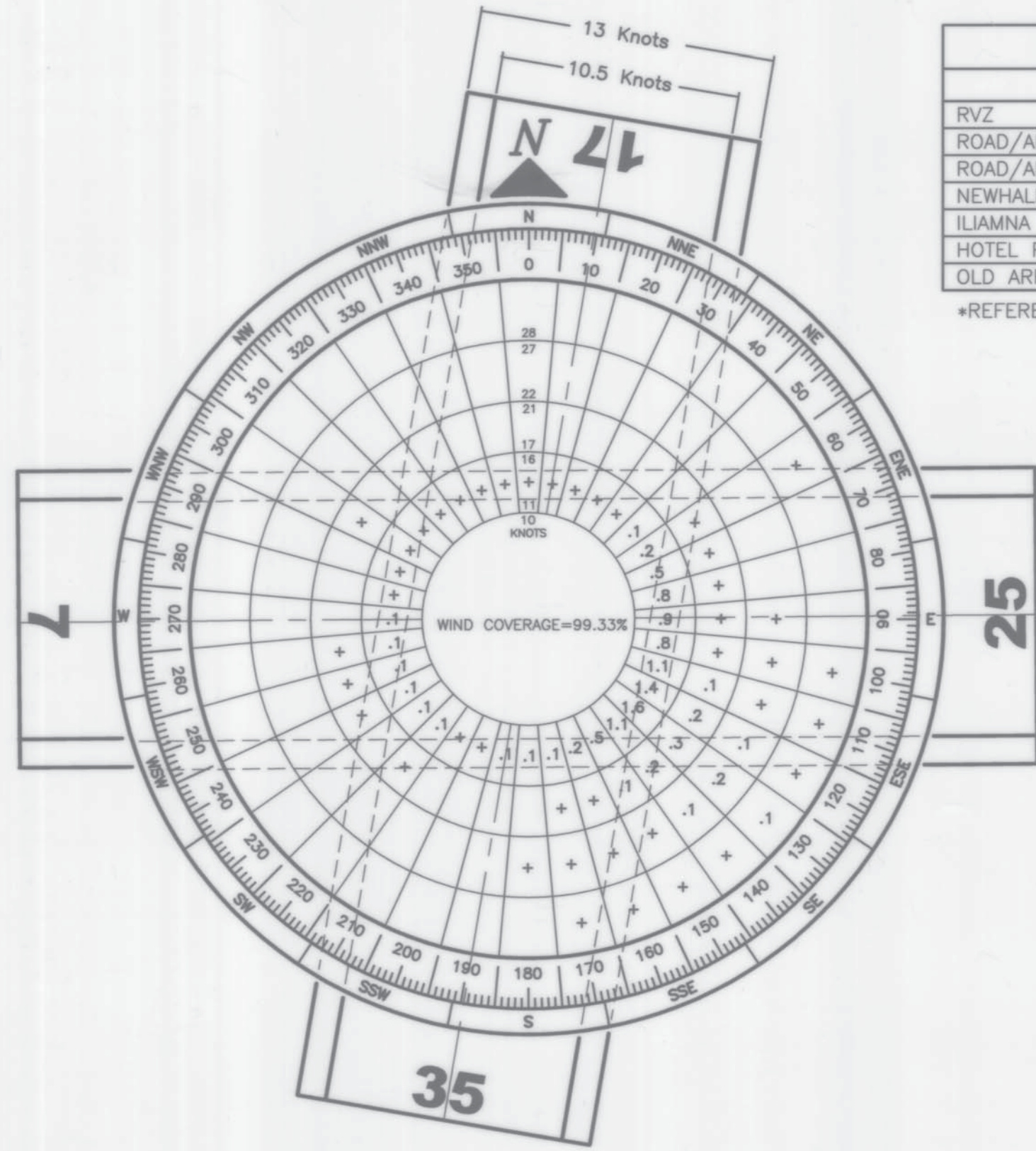


VICINITY MAP

1:63,360
 T 5S, R 33 W, SEC. 8, 9, 16, 17
 SEWARD MERIDIAN
 U.S.G.S. ILIAMNA C-5, C-6, D-5, D-6, ALASKA
 GRAPHIC SCALE IN MILES

RUNWAY 7/25 DATA TABLE			
ITEM	EXISTING	ULTIMATE	GRAVEL-ULTIMATE
RUNWAY TYPE UTILITY OR OTHER THAN UTILITY	OTHER THAN UTILITY	SAME	UTILITY
FAR PART 77 APPROACH CATEGORY (V, NPI, P)	NPI/NPI	SAME	V
APPROACH SURFACES	34:1/34:1	SAME	20:1/20:1
VISIBILITY MINIMUM	1 MILE/1 MILE	<3/4 MILE/>3/4 MILE	1 MILE/1 MILE
RUNWAY SURFACE	ASPHALT	SAME	GRAVEL
PAVEMENT STRENGTH SW,DW,DTW,DDTW x1000lbs	SW 16, DW 150	SAME	---
AIRCRAFT APPROACH CATEGORY	B	B	A
AIRPLANE DESIGN GROUP	III	II	I
TRUE BEARING	S87°36'16"E	SAME	S87°36'16"E
EFFECTIVE GRADE	0.948%	SAME	0.91%
TOUCHDOWN ZONE ELEVATION NAVD88	191.8' / 173.3'	SAME	157.0
RUNWAY DIMENSIONS	5,086.5' x 100'	SAME	1,800' x 60'
RUNWAY SAFETY AREA (RSA) DIMENSIONS	6,286' x 300'	SAME	2,280' x 120'
LENGTH BEYOND R/W END	600'	600'	240'
RUNWAY PROTECTION ZONE (RPZ) DIMENSIONS	RUNWAY 7 500'/700'/1,000'	1,000'/1,750'/2,500'	250'/450'/1000'
RUNWAY OBJECT FREE AREA (OFA) DIMENSIONS	5,686' x 500'	6,286' x 800'	2,280' x 250'
LENGTH BEYOND R/W END OR STOPWAY	300'/300'	600'/300'	240'
RUNWAY OBSTACLE FREE ZONE (OFZ) DIMENSIONS	5,486' x 400'	SAME	2,200' x 120'
RUNWAY LIGHTING	MI	SAME	MI
RUNWAY MARKING TYPE	NPI	NPI	---
RUNWAY VISUAL APPROACH AIDS	REIL PAPI/PAPI	MALS/ODALS	---

RUNWAY 17/35 DATA TABLE			
ITEM	EXISTING	ULTIMATE	GRAVEL-ULTIMATE
RUNWAY TYPE UTILITY OR OTHER THAN UTILITY	OTHER THAN UTILITY	SAME	UTILITY
FAR PART 77 APPROACH CATEGORY (V, NPI, P)	NPI/NPI	SAME	V
APPROACH SURFACES	34:1/34:1	SAME	20:1
VISIBILITY MINIMUM	1 MILE/1 MILE	<3/4 MILE / <3/4 MILE	1 MILE/1 MILE
RUNWAY SURFACE	ASPHALT	SAME	GRAVEL
PAVEMENT STRENGTH SW,DW,DTW,DDTW x1000lbs	SW 16, DW 150	SAME	---
AIRCRAFT APPROACH CATEGORY	B	B	A
AIRPLANE DESIGN GROUP	III	II	I
TRUE BEARING	N09°03'51"E	SAME	N09°03'51"E
EFFECTIVE GRADE	0.177%	SAME	0.14%
TOUCHDOWN ZONE ELEVATION NAVD88	182.3' / 177.9'	SAME	147.0
RUNWAY DIMENSIONS	4,800' x 100'	SAME	1,800' x 60'
RUNWAY SAFETY AREA (RSA) DIMENSIONS	6,000' x 300'	SAME	2,280' x 120'
LENGTH BEYOND R/W END	600'	600'	240'
RUNWAY PROTECTION ZONE (RPZ) DIMENSIONS	500'/700'/1,000'	1,000'/1,750'/2,500'	250'/450'/1000'
RUNWAY OBJECT FREE AREA (OFA) DIMENSIONS	5,400 x 800'	6,000' x 800'	2,280 x 250'
LENGTH BEYOND R/W END OR STOPWAY	300' / 300'	600' / 600'	240'
RUNWAY OBSTACLE FREE ZONE (OFZ) DIMENSIONS	5,200' x 400'	SAME	2,200' x 120'
RUNWAY LIGHTING	MI	SAME	MI
RUNWAY MARKING TYPE	NPI	NPI	---
RUNWAY VISUAL APPROACH AIDS	PAPI/PAPI	MALS / MALS	---



WIND DATA TABLE		
RUNWAY	10.5 kt	13 kt
17/35	78.03	85.21
7/25	89.79	94.91
COMBINED	97.48	99.33

SOURCE:
 U.S. DEPARTMENT OF COMMERCE, NATIONAL OCEANIC AND ATMOSPHERIC
 ADMINISTRATION, NATIONAL CLIMATIC DATA CENTER SEPTEMBER 2005
 PERIOD: JAN 1996 to DEC 2004

AIRPORT DATA TABLE			
ITEM	EXISTING	ULTIMATE	
ICAO IDENTIFIER	PAIL	SAME	
NATIONAL AIRPORT IDENTIFIER	ILJ	SAME	
FAA SITE NUMBER	50340.*A	SAME	
AIRPORT ELEVATION NAVD88	191.8	SAME	
AIRPORT REFERENCE CODE	B-III	B-II	
MEAN MAX. TEMPERATURE, HOTTEST MONTH: JULY	62.7F	SAME	
AIRPORT AND TERMINAL NAVIGATION AIDS	NDB/DME	SAME	
TAXIWAY LIGHTING/MARKING	MI/ YES	SAME	
OBSTRUCTION SURVEY SOURCE & TYPE	C	D	
MAGNETIC DECLINATION, YEAR, RATE OF CHANGE	17°40'E, 2006	17°09'E, 2008	

GEOGRAPHIC COORDINATES TABLE						
NAD83(96) (20003.0000) ALASKA STATE PLANE ZONE 5						
ITEM	GRAVEL LATITUDE	GRAVEL LONGITUDE	EXISTING LATITUDE	EXISTING LONGITUDE	ULTIMATE LATITUDE	ULTIMATE LONGITUDE
ARP	SAME	SAME	N59°45'13.679"	W154°54'39.444"	SAME	SAME
THRESHOLD RW 7	N59°44'58.72"	W154°54'34.05"	N59°45'06.788"	W154°55'26.628"	SAME	SAME
THRESHOLD RW 25	N59°44'57.73"	W154°53'58.97"	N59°45'04.694"	W154°53'47.434"	SAME	SAME
THRESHOLD RW 17	N59°44'58.52"	W154°54'14.79"	N59°45'45.433"	W154°54'34.620"	SAME	SAME
THRESHOLD RW 35	N59°44'41.05"	W154°54'20.80"	N59°44'58.750"	W154°54'49.381"	SAME	SAME

WATERWAY DATA TABLE		
ITEM	EXISTING	ULTIMATE
RUNWAY SURFACE	WATER	WATER
APPROACH SURFACES	20:1	20:1
VISIBILITY MINIMUM	VISUAL	VISUAL
RUNWAY MARKING	NONE	NONE
NAVIGATION AIDS	NONE	NONE
RUNWAY DIMENSION NORTH/SOUTH	400' x 2900'	200' x 4400'
RUNWAY DIMENSION EAST/WEST	400' x 3000'	200' x 3000'
RPZ	---	250'x450'x1000'

LEGEND		
ITEM	EXISTING	ULTIMATE
AIRPORT REFERENCE POINT (A.R.P.)		
ANTENNA		
BLUFF		
BUILDINGS		
BUILDING RESTRICTION LINE		
FENCE		
PAPI		
PROPERTY LINE		
REIL		
ROADWAYS		
ROTATING BEACON		
SHORELINE		
THRESHOLD MARKERS/LIGHTS		
TOPOGRAPHIC CONTOURS		
TREE (LARGE SINGLE)		
TREELINE		
VASI		
WIND CONE		
SEGMENTED CIRCLE		
ULTIMATE LEASE LOT		

MODIFICATION TO STANDARDS/ NON STANDARD CONDITIONS			
DESCRIPTION	STANDARD	EXISTING	ULTIMATE
RVZ	CLEAR	OBSTRUCTION	CLEAR
ROAD/APPROACH SLOPE PENETRATION RW 17	CLEAR	PENETRATION	CLEAR
ROAD/APPROACH SLOPE PENETRATION RW 7	CLEAR	PENETRATION	CLEAR
NEWHALEN LANDFILL* DISTANCE OF LANDFILL FACILITY FROM RUNWAY	10,000'	7,213'	10,000'
ILIAMNA LANDFILL* DISTANCE OF LANDFILL FACILITY FROM RUNWAY	10,000'	7,880'	10,000'
HOTEL PENETRATES RVZ AND BRL	CLEAR	PENETRATION	CLEAR
OLD ARFF BUILDING PENETRATES RVZ	CLEAR	PENETRATION	CLEAR

*REFERENCED IN THE ILIAMNA WILDLIFE HAZARD MANAGEMENT PLAN

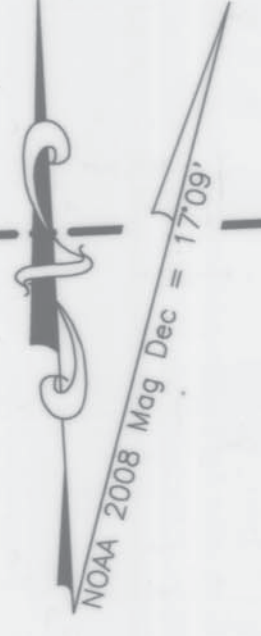
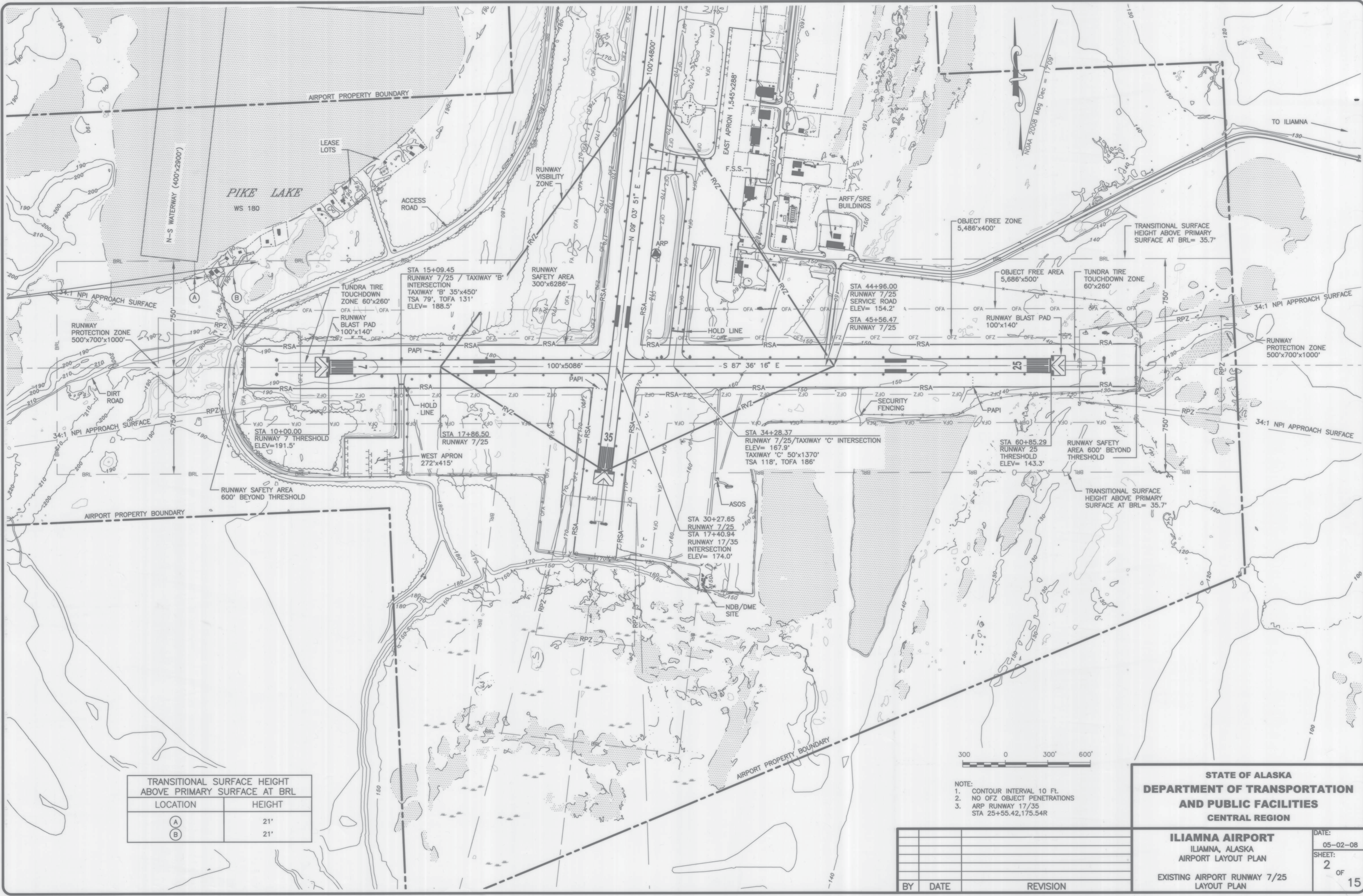
BY	DATE	REVISION
APPROVED:		DATE: 5-23-08
ROB CAMPBELL, P.E.		PRECONSTRUCTION ENGINEER
RECOMMENDED:		DATE: 5-23-08
BUTCH DOUTHIT, P.E.		DESIGN SECTION CHIEF
AIRPORT LAYOUT PLAN CONDITIONAL APPROVAL SUBJECT TO ALP APPROVAL LETTER DATED 1/05/09 FAA AIRSPACE REVIEW NUMBER: 07-ARL-93NAR		
		DATE: 11/5/09
FAA, AIRPORTS DIVISION ALASKAN REGION, AAL		

DRAWING INDEX	
SHT #	TITLE
1	AIRPORT DATA SHEET
2	EXISTING AIRPORT RUNWAY 7/25 LAYOUT PLAN
3	EXISTING AIRPORT RUNWAY 17/35 LAYOUT PLAN
4	EXISTING WATERWAY PLAN
5	ULTIMATE AIRPORT RUNWAY 7/25 LAYOUT PLAN
6	ULTIMATE AIRPORT RUNWAY 17/35 LAYOUT PLAN
7	ULTIMATE WATERWAY PLAN
8	INNER PORTION OF THE APPROACH SURFACE RUNWAY 7
9	INNER PORTION OF THE APPROACH SURFACE RUNWAY 25
10	INNER PORTION OF THE APPROACH SURFACE RUNWAY 17
11	INNER PORTION OF THE APPROACH SURFACE RUNWAY 35
12	AIRPORT AIRSPACE 14 CFR, PART 77, PLAN
13	AIRPORT AIRSPACE 14 CFR, PART 77, PROFILES
14	PROPERTY MAP
15	TERMINAL AREA

STATE OF ALASKA
 DEPARTMENT OF TRANSPORTATION
 AND PUBLIC FACILITIES
 CENTRAL REGION
ILIAMNA AIRPORT
 ILIAMNA, ALASKA
 AIRPORT LAYOUT PLAN
 AIRPORT DATA SHEET

DATE: 05-02-08
 SHEET: 1 OF 15

Date Plotted: 15/16/2008 1:55 PM, Wilhelm, Laura
 Layout Name: SHEET 2
 File Name: C:\DOCUMENTS AND SETTINGS\WILHELM\DESKTOP\ILIAMNA_FINAL_SUBMITTAL_5-16-08\ILIAMNA_A.P. SHEET-02.DWG
 Designed By: DS
 Drawn By: DS
 Checked By: CS



TRANSITIONAL SURFACE HEIGHT ABOVE PRIMARY SURFACE AT BRL	
LOCATION	HEIGHT
(A)	21'
(B)	21'



- NOTE:
1. CONTOUR INTERVAL 10 FL.
 2. NO OFZ OBJECT PENETRATIONS
 3. ARP RUNWAY 17/35
STA 25+55.42, 175.54R

BY	DATE	REVISION

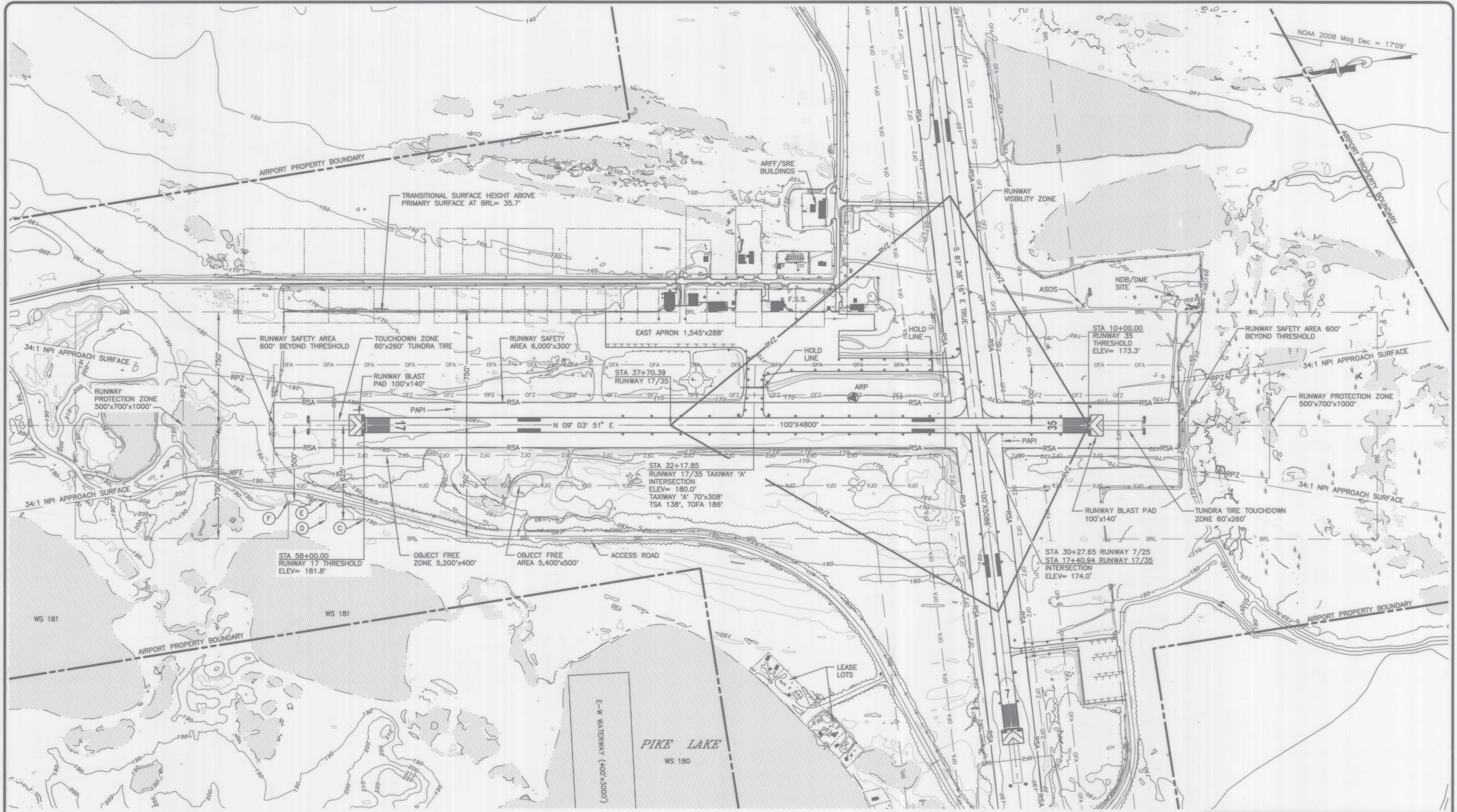
STATE OF ALASKA
DEPARTMENT OF TRANSPORTATION
AND PUBLIC FACILITIES
CENTRAL REGION

ILIAMNA AIRPORT
 ILIAMNA, ALASKA
 AIRPORT LAYOUT PLAN

EXISTING AIRPORT RUNWAY 7/25
 LAYOUT PLAN

DATE: 05-02-08
 SHEET: 2 OF 15

Date Plotted: 12/15/2008 1:55 PM, Wilhelm, Laura
 Layout Name: SHEET-3
 File Name: C:\DOCUMENTS AND SETTINGS\WILHELM\ALP_SHEET-03.DWG
 Designed By: DC
 Drawn By: DC
 Checked By: CS



TRANSITIONAL SURFACE HEIGHT ABOVE PRIMARY SURFACE AT BRL	
LOCATION	HEIGHT
(C)	17'
(D)	17'
(E)	0'
(F)	0'

- NOTES:
1. CONTOUR INTERVAL 10 FL.
 2. NO OFZ OBJECT PENETRATIONS
 3. ARP RUNWAY 17/35 STA 25+55.42, 175.54R



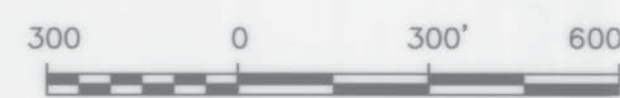
BY	DATE	REVISION

STATE OF ALASKA
DEPARTMENT OF TRANSPORTATION AND PUBLIC FACILITIES
CENTRAL REGION

ILIAMNA AIRPORT
 ILIAMNA, ALASKA
 AIRPORT LAYOUT PLAN
 EXISTING AIRPORT RUNWAY 17/35 LAYOUT PLAN

DATE: 05-02-08
 SHEET: 3 OF 15

Date Plotted: 15/16/2008 1:55 PM, Wilheim, Laura
 Layout Name: SHEET 4
 File Name: C:\DOCUMENTS AND SETTINGS\WILHELM\DESKTOP\ILIAMNA_FINAL SUBMITTAL_5-16-08\ILIAMNA_ALP_SHEET-04.DWG
 Designed By: DG
 Drawn By: DG
 Checked By: CS



NOTE:
1. CONTOUR INTERVAL 10 FT.

BY	DATE	REVISION

STATE OF ALASKA
DEPARTMENT OF TRANSPORTATION
AND PUBLIC FACILITIES
CENTRAL REGION

ILIAMNA AIRPORT
 ILIAMNA, ALASKA
 AIRPORT LAYOUT PLAN
 EXISTING WATERWAY PLAN

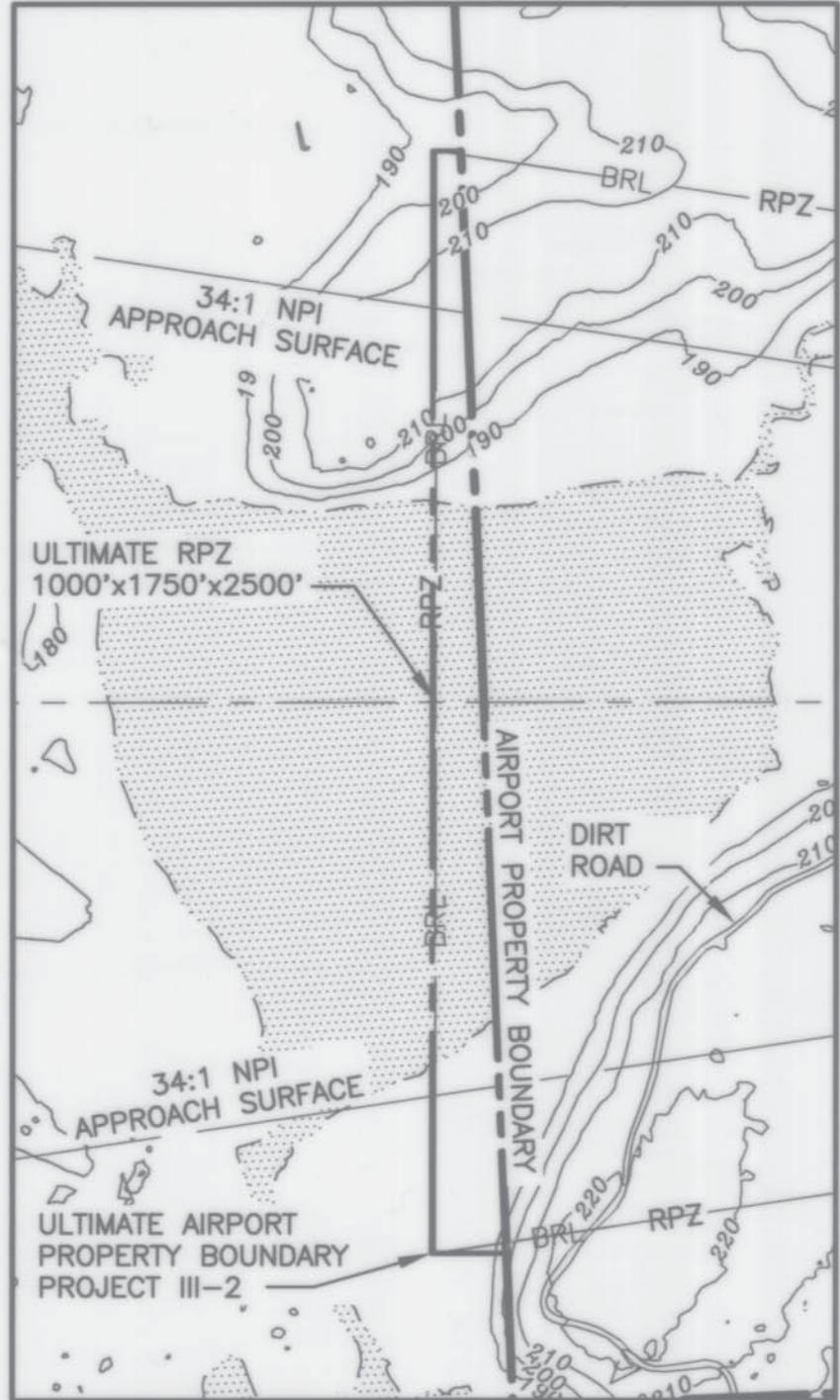
DATE:	05-02-08
SHEET:	4
	OF 15

Date Plotted: 15/16/2008 1:56 PM, Wilhelm, Laura
 Sheet: 5
 Layout Name: C:\DOCUMENTS AND SETTINGS\WILHELM\DESKTOP\ILIAMNA_FINAL_SUBMITTAL_5-16-08\ILIAMNA_AIP_SHEET-05.DWG
 File Name:
 Designed By: DG
 Drawn By: DG
 Checked By: CS



RPZ MATCHLINE SEE BELOW

RPZ MATCHLINE SEE ABOVE



BY	DATE	REVISION

STATE OF ALASKA
DEPARTMENT OF TRANSPORTATION
AND PUBLIC FACILITIES
CENTRAL REGION

ILIAMNA AIRPORT
 ILIAMNA, ALASKA
 AIRPORT LAYOUT PLAN
 ULTIMATE AIRPORT RUNWAY 7/25
 LAYOUT PLAN

DATE:	05-02-08
SHEET:	5
OF	15

Date Plotted: 5/16/2008 1:56 PM, Wilhelm, Laura
 Layout Name: SHEET 6
 File Name: C:\DOCUMENTS AND SETTINGS\WILHELMIA\DESKTOP\ILIAMNA_FINAL_SUBMITTAL_5-16-08\ILIAMNA_ALP_SHEET-06.DWG
 Designed By: DC
 Drawn By: DC
 Checked By: CS



300' 0 300' 600'
 NOTE: CONTOUR INTERVAL 10 FL.

**STATE OF ALASKA
 DEPARTMENT OF TRANSPORTATION
 AND PUBLIC FACILITIES
 CENTRAL REGION**

ILIAMNA AIRPORT
 ILIAMNA, ALASKA
 AIRPORT LAYOUT PLAN
 ULTIMATE AIRPORT RUNWAY 17/35
 LAYOUT PLAN

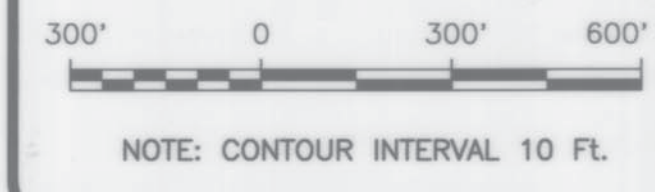
DATE: 05-02-08
 SHEET: 6 OF 15

BY	DATE	REVISION

Date Plotted: 15/16/2008 1:57 PM, Wilham, Laura
 Layout Name: SHEET 7
 File Name: C:\DOCUMENTS AND SETTINGS\WILHELM\DESKTOP\ILIAMNA_FINAL SUBMITAL 5-16-08\ILIAMNA_ALP_SHEET-07.DWG
 Designed By: DG
 Drawn By: DG
 Checked By: CS



NOAA 2008 Mag Dec = 1709'



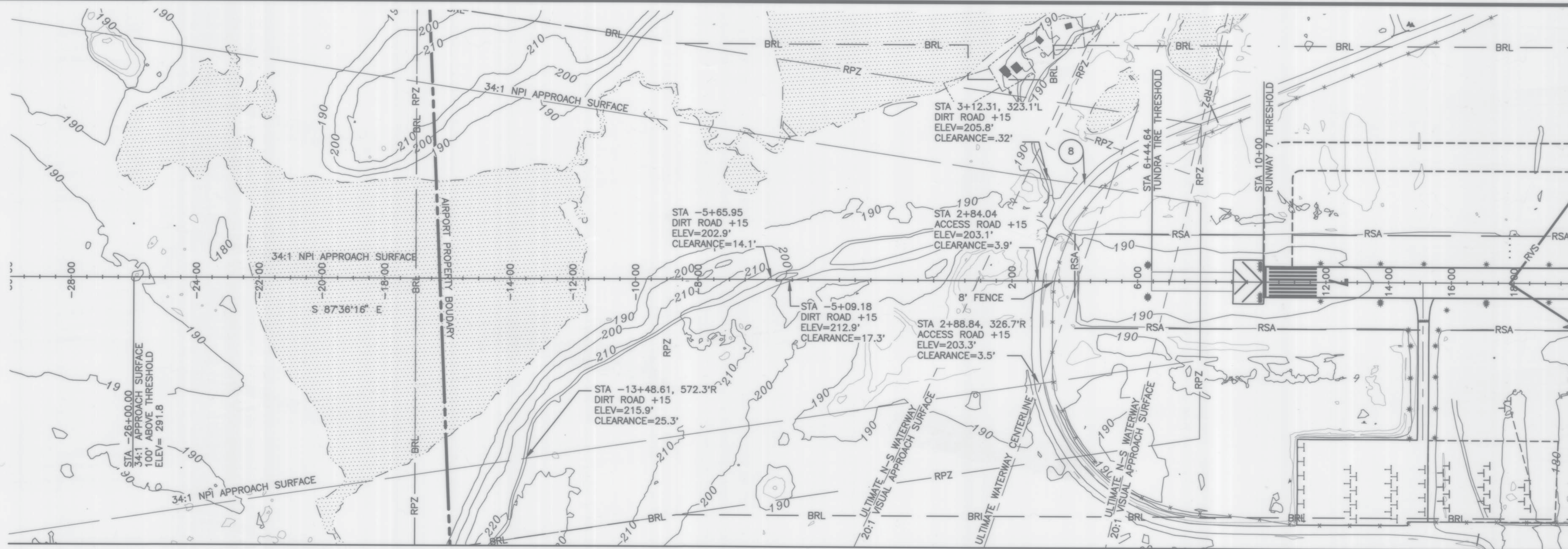
BY	DATE	REVISION

STATE OF ALASKA
DEPARTMENT OF TRANSPORTATION
AND PUBLIC FACILITIES
CENTRAL REGION

ILIAMNA AIRPORT
 ILIAMNA, ALASKA
 AIRPORT LAYOUT PLAN
 ULTIMATE WATERWAY PLAN

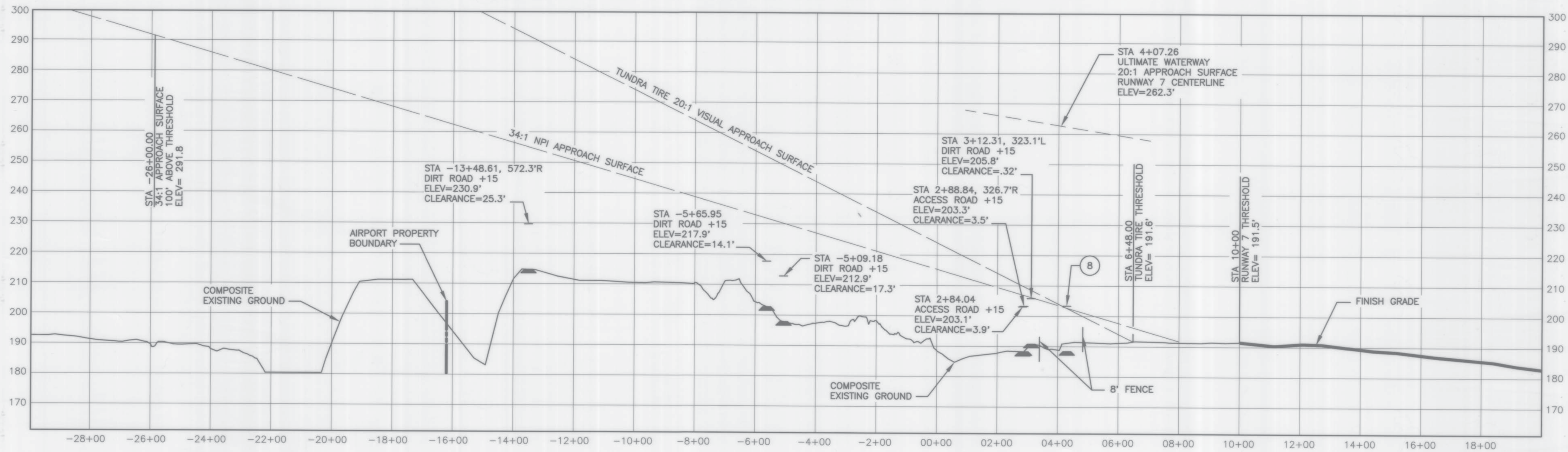
DATE:
 05-02-08
 SHEET:
 7
 OF
 15

Date Plotted: 5/16/2008 1:58 PM, Wilhelm, Laura
 Layout Name: SHEET 8
 File Name: C:\DOCUMENTS AND SETTINGS\WILHELMIA\DESKTOP\ILIAMNA_FINAL_SUBMITTAL_5-16-08\ILIAMNA_ALP_SHEET-8-DWG

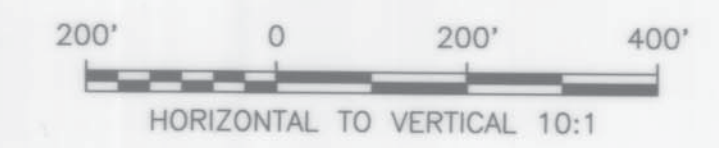


RUNWAY 7 APPROACH PLAN

THERE ARE NO PERMANENT OBSTRUCTIONS TO RUNWAY 7 34:1 APPROACH SURFACE



RUNWAY 7 APPROACH PROFILE



ID #	DESCRIPTION	STATION	ELEVATION NAVD88	SURFACE PENETRATED	SURFACE ELEVATION	AMOUNT PENETRATION	DISPOSITION TO CORRECT	STAGE
8	ACCESS ROAD	4+30/306'L	188.4'	APPROACH	202.1'	0.7'	LOWER ROAD	PROJECT 1-8

NOTE: REFER TO AIRPORT AIRSPACE DRAWING FOR PENETRATIONS OF THE OUTER APPROACH SURFACE.

- NOTES:
- THERE ARE NO OBJECT FREE AREA PENETRATIONS
 - THE CONTROLLING OBSTRUCTION FOR RUNWAY 7 IS A VEHICLE ON THE ROAD CROSSING THE NORTHERNEDGE OF THE APPROACH SURFACE. THE OBSTRUCTION CLEARANCE SLOPE IS 21:1 (BASED ON A 15' HIGH VEHICLE) PER FAA AC 150/5200-35, SECTION 4, D.E.N. 57
 - THERE ARE NO OBJECT PENETRATIONS IN THE RUNWAY APPROACH END SITING SURFACE OF RUNWAY 7 AS DEFINED IN FAA AC 150/5300-13 CHG 11, APPENDIX 2, TABLE A2-1, LINE 9.

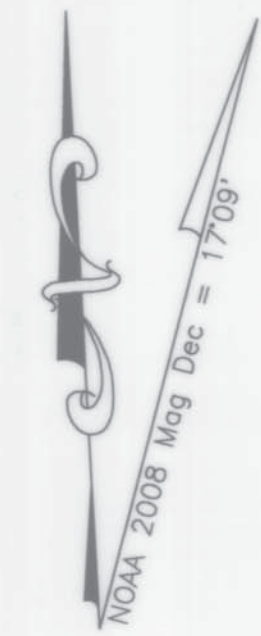
BY	DATE	REVISION

STATE OF ALASKA
DEPARTMENT OF TRANSPORTATION
AND PUBLIC FACILITIES
CENTRAL REGION

ILIAMNA AIRPORT
 ILIAMNA, ALASKA
 AIRPORT LAYOUT PLAN
 INNER PORTION OF THE
 APPROACH SURFACE RUNWAY 7

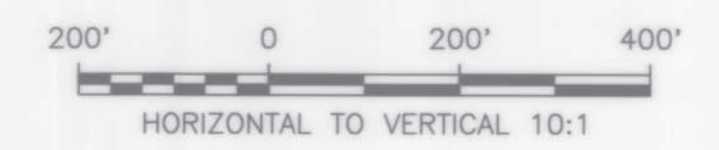
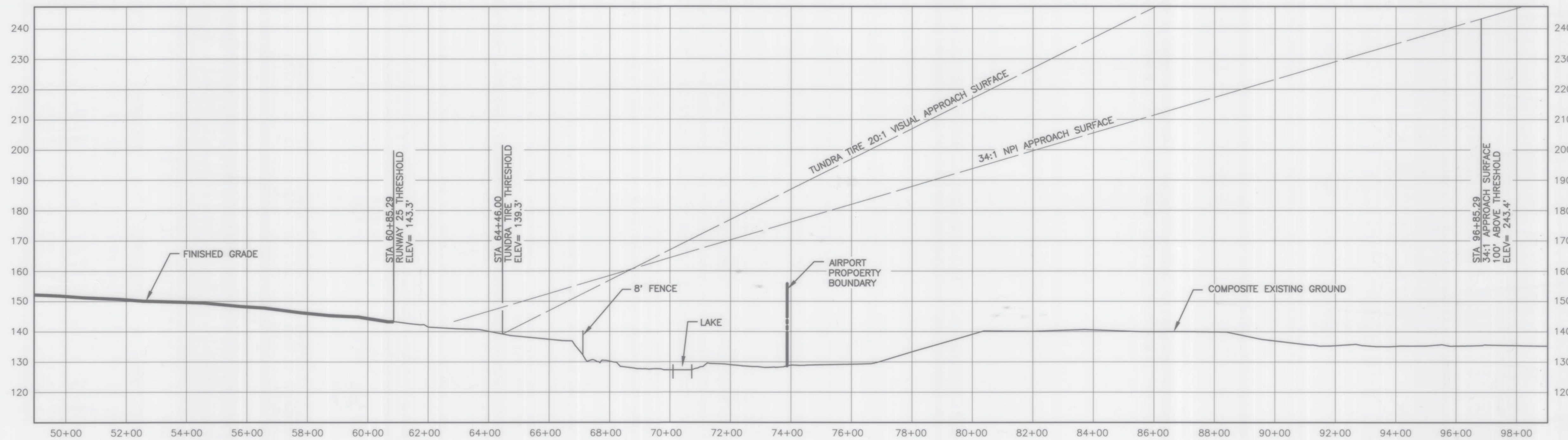
DATE:
 05-02-08
 SHEET:
 8
 OF
 15

Date Plotted: 5/16/2008 1:58 PM, Wilhelm, Laura
 Layout Name: SHEET 9
 File Name: C:\DOCUMENTS AND SETTINGS\WILHELM, LAURA\DESKTOP\ILIAMNA_FINAL_SUBMITAL_5-16-08\ILIAMNA_ALP_SHEET-8-9.DWG
 Designed By: DG
 Drawn By: DG
 Checked By: CS



RUNWAY 25 APPROACH PLAN

THERE ARE NO PERMANENT OBSTRUCTIONS TO RUNWAY 25 34:1 APPROACH SURFACE



RUNWAY 25 APPROACH PROFILE

ID #	DESCRIPTION	STATION	ELEVATION	SURFACE	SURFACE	AMOUNT	STAGE
		OFFSET	NAVD88	PENETRATED	ELEVATION	PENETRATION	DISPOSITION TO CORRECT
	NONE						

NOTE: REFER TO AIRPORT AIRSPACE DRAWING FOR PENETRATIONS OF THE OUTER APPROACH SURFACE.

NOTES:

- THERE ARE NO OBJECT FREE AREA PENETRATIONS
- THERE ARE NO OBSTRUCTIONS IN THE APPROACH TO RUNWAY 25; THEREFORE THE OBSTRUCTION CLEARANCE SLOPE IS ESTABLISHED AS 50:1 PER FAA AC 150/5200-35, SECTION 4, D.E.N. 57
- THERE ARE NO OBJECT PENETRATIONS IN THE RUNWAY APPROACH END SITING SURFACE OF RUNWAY 25 AS DEFINED IN FAA AC 150/5300-13 CHG 10, APPENDIX 2, TABLE 2A-1, LINE 8.

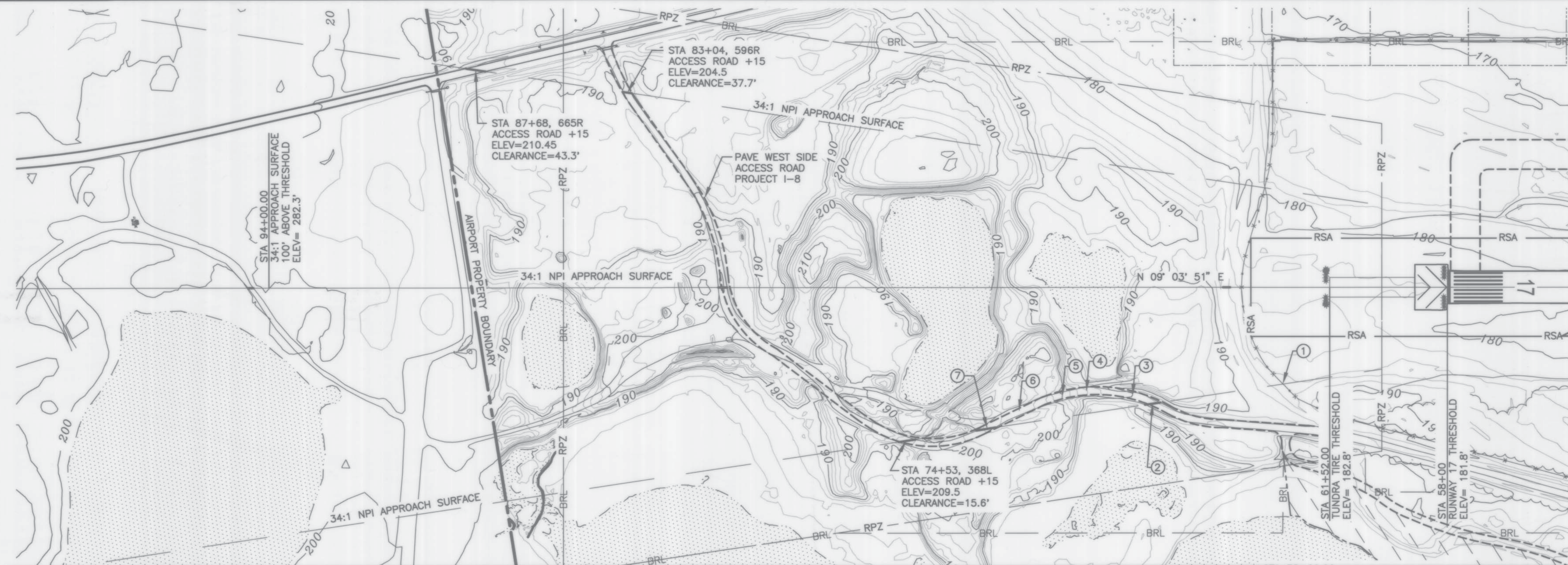
BY	DATE	REVISION

STATE OF ALASKA
DEPARTMENT OF TRANSPORTATION
AND PUBLIC FACILITIES
CENTRAL REGION

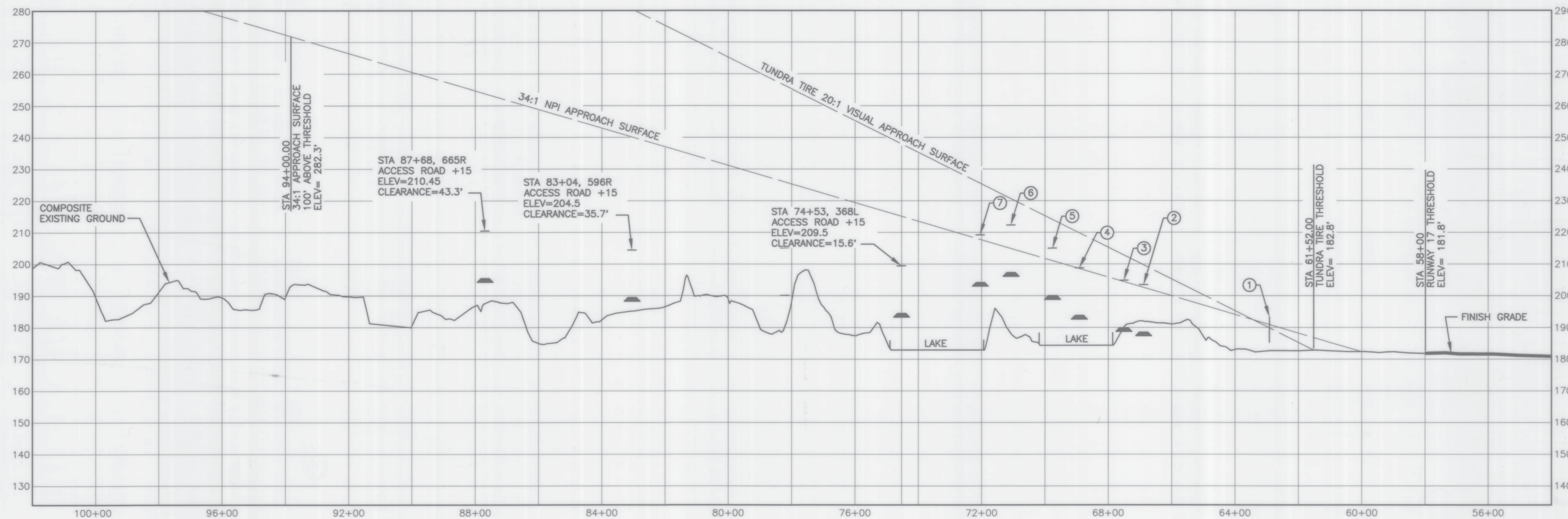
ILIAMNA AIRPORT
 ILIAMNA, ALASKA
 AIRPORT LAYOUT PLAN
 INNER PORTION OF THE
 APPROACH SURFACE RUNWAY 25

DATE: 05-02-08
 SHEET: 9 OF 15

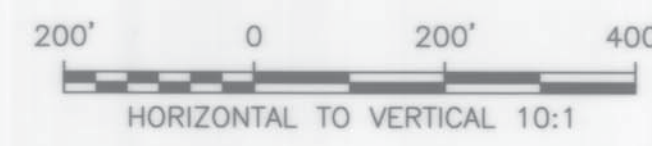
Date Plotted: 15/16/2008 1:58 PM, Wilhelm, Laura
 Layout Name: SHEET 10
 File Name: G:\DOCUMENTS AND SETTINGS\WILHELMIA\DESKTOP\ILIAMNA_FINAL SUBMITTAL 5-16-08\ILIAMNA_ALP_SHEET-10-11.DWG
 Designed By: DC
 Drawn By: DC
 Checked By: US



RUNWAY 17 APPROACH PLAN



RUNWAY 17 APPROACH PROFILE



34:1 APPROACH SURFACE OBSTRUCTION TABLE (INNER PORTION RW 17)								
ID #	DESCRIPTION	STATION	ELEVATION	SURFACE	SURFACE ELEVATION	AMOUNT	DISPOSITION	STAGE
1	8' FENCE	63+02/295L	185.3'	APPROACH	189.8'	3.5'	-	PROJECT 1-8
2	ACCESS ROAD	67+00/355L	188.6'	APPROACH	202.6'	0.9'	LOWER ROAD	PROJECT 1-8
3	ACCESS ROAD	67+61/332L	189.9'	APPROACH	204.4'	0.5'	LOWER ROAD	PROJECT 1-8
4	ACCESS ROAD	69+02/318L	194.1	APPROACH	208.9'	.2'	LOWER ROAD	PROJECT 1-8
5	ACCESS ROAD	69+76/333L	200.0'	APPROACH	211.0'	4.0'	LOWER ROAD	PROJECT 1-8
6	ACCESS ROAD	71+07/378L	207.3'	APPROACH	214.9'	7.4'	LOWER ROAD	PROJECT 1-8
7	ACCESS ROAD	72+04/431L	204.2'	APPROACH	217.7'	1.5'	LOWER ROAD	PROJECT 1-8

NOTE: REFER TO AIRPORT AIRSPACE DRAWING FOR PENETRATIONS OF THE OUTER APPROACH SURFACE.

NOTES:

- THERE ARE NO OBJECT FREE AREA PENETRATIONS
- THERE ARE OBSTRUCTIONS IN THE APPROACH TO RUNWAY 17. THE OBSTRUCTION CLEARANCE SLOPE (OCS) IS 29.5:1, BASED ON A 15' HIGH VEHICLE ON THE ROAD CROSSING THE WESTERN EDGE OF THE APPROACH SURFACE AT ⑥. THE OCS ESTABLISHED PER FAA AC 150/5200-35, SECTION 4, D.E.N. 57
- THERE ARE NO OBJECT PENETRATIONS IN THE RUNWAY APPROACH END SITING SURFACE OF RUNWAY 17 AS DEFINED IN FAA AC 150/5300-13 CHG 10, APPENDIX 2, TABLE 2A-1, LINE 9.

BY	DATE	REVISION

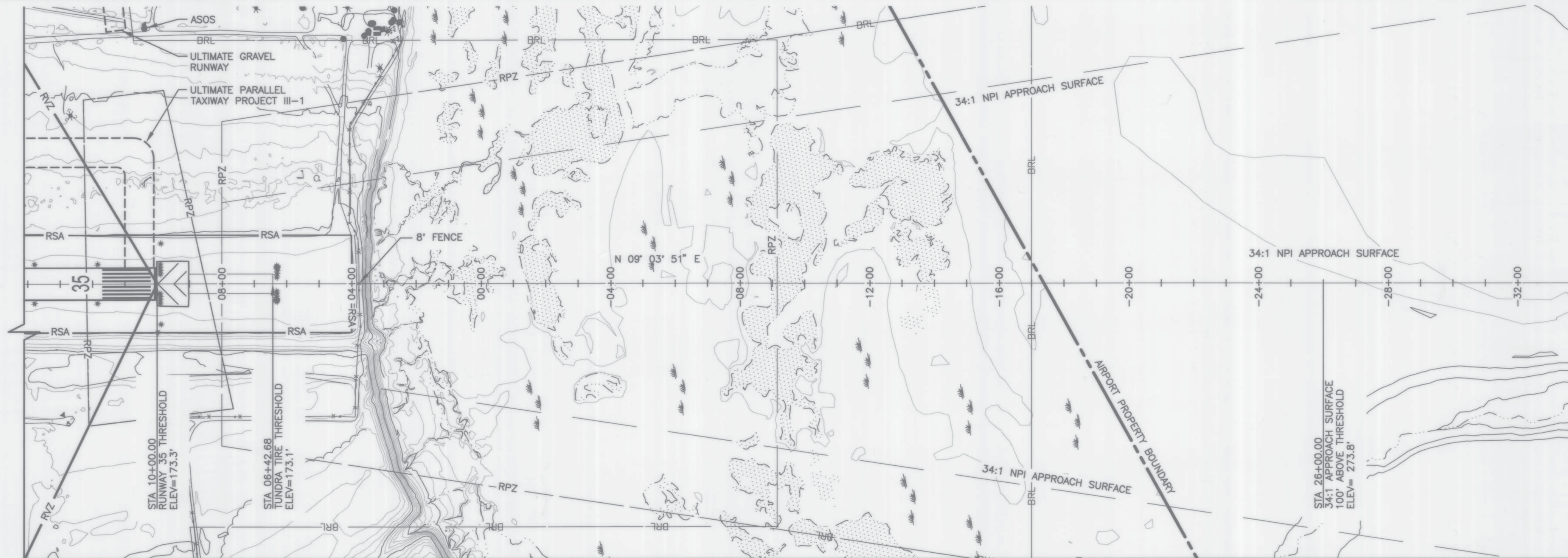
STATE OF ALASKA
DEPARTMENT OF TRANSPORTATION
AND PUBLIC FACILITIES
CENTRAL REGION

ILIAMNA AIRPORT
 ILIAMNA, ALASKA
 AIRPORT LAYOUT PLAN
 INNER PORTION OF THE
 APPROACH SURFACE RUNWAY 17

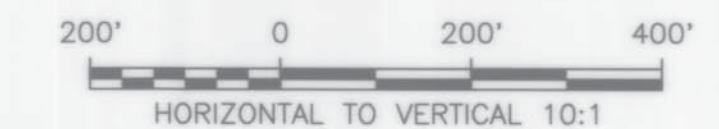
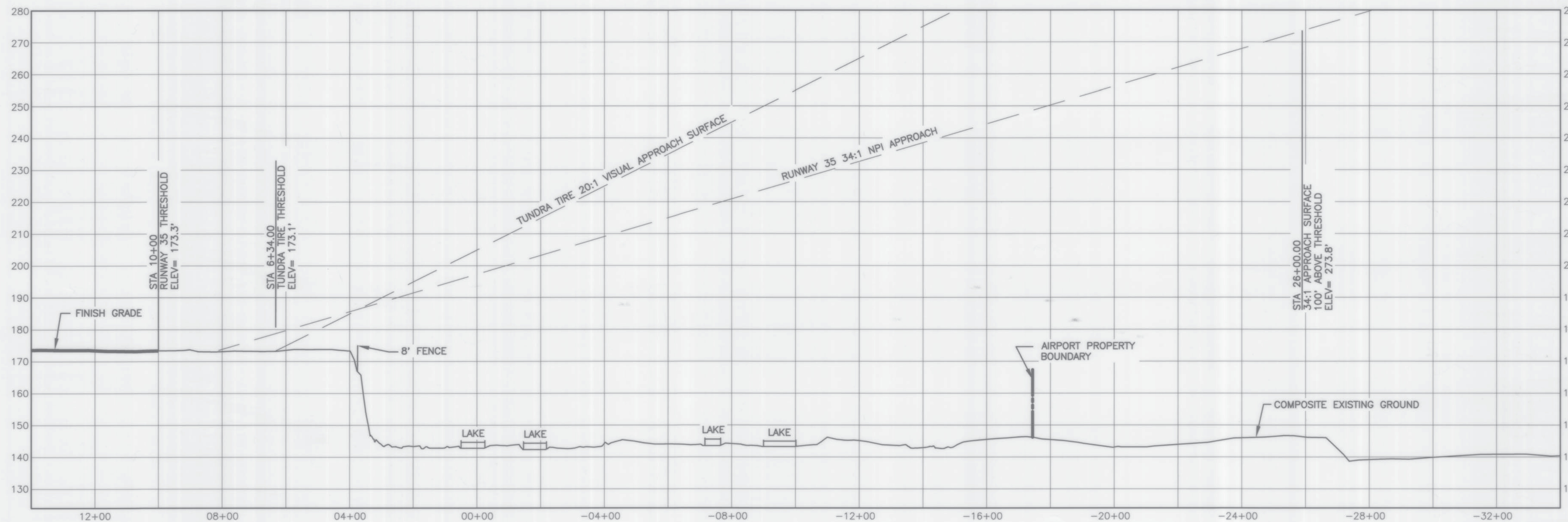
DATE: 05-02-08
 SHEET: 10 OF 15

Date Plotted: 15/16/2008 1:58 PM, Wilhelm, Laura
 Layout Name: SHEET 11
 File Name: C:\DOCUMENTS AND SETTINGS\WILHELMIA\DESKTOP\ILIAMNA_FINAL_SUBMITAL_5-16-08\ILIAMNA_ALP_SHEET-10-11.DWG

Designed By: DC
 Drawn By: DC
 Checked By: CS



RUNWAY 35 APPROACH PLAN



RUNWAY 35 APPROACH PROFILE

ID #	DESCRIPTION	STATION OFFSET	ELEVATION NAVD88	SURFACE PENETRATED	SURFACE ELEVATION	AMOUNT PENETRATION	DISPOSITION	STAGE TO CORRECT
	NONE							

NOTE: REFER TO AIRPORT AIRSPACE DRAWING FOR PENETRATIONS OF THE OUTER APPROACH SURFACE.

NOTES:

- THERE ARE NO OBJECT FREE AREA PENETRATIONS
- THE CONTROLLING OBSTRUCTION FOR RUNWAY 35 ARE VEHICLE ON THE ROAD CROSSING THE EASTERN AND WESTERN EDGES OF THE APPROACH SURFACE. THE OBSTRUCTION CLEARANCE SLOPE (OCS) IS 42:1 (BASED ON A 10' HIGH VEHICLE) PER FAA AC 150/5200-35, SECTION 4, D.E.N. 57
- THERE ARE NO OBJECT PENETRATIONS IN THE RUNWAY APPROACH END SITING SURFACE OF RUNWAY 35 AS DEFINED IN FAA AC 150/5300-13 CHG 10, APPENDIX 2, TABLE 2A-1, LINE 9.

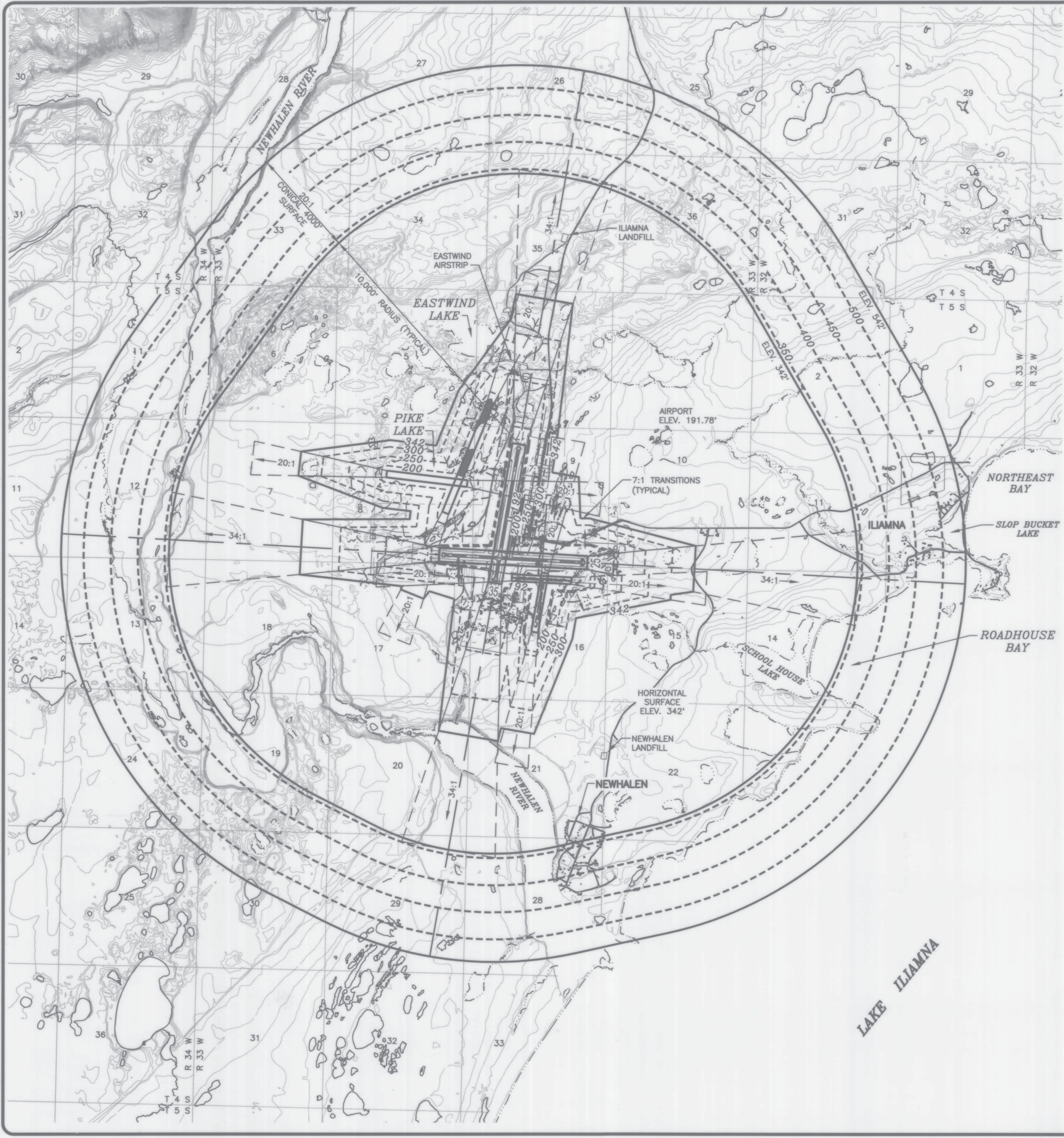
BY	DATE	REVISION

STATE OF ALASKA
DEPARTMENT OF TRANSPORTATION
AND PUBLIC FACILITIES
CENTRAL REGION

ILIAMNA AIRPORT
 ILIAMNA, ALASKA
 AIRPORT LAYOUT PLAN
 INNER PORTION OF THE
 APPROACH SURFACE RUNWAY 35

DATE: 05-02-08
 SHEET: 11 OF 15

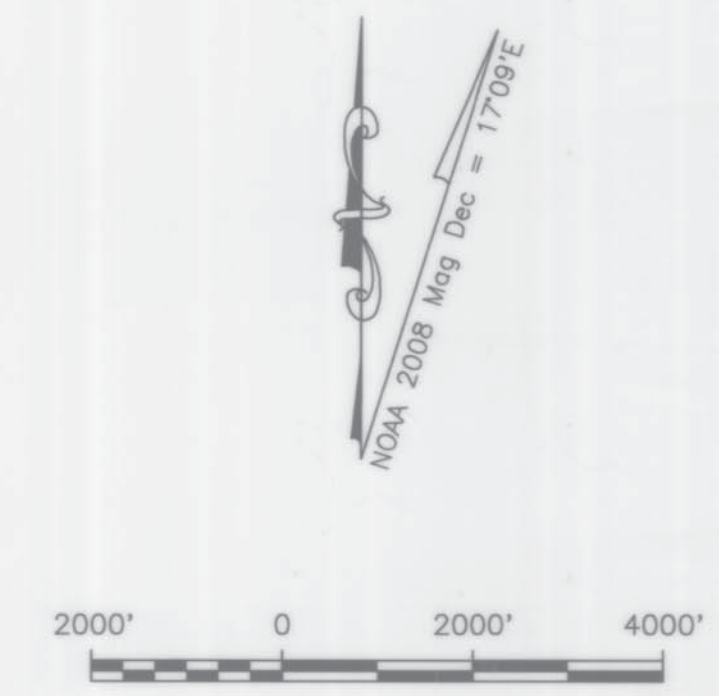
Date Plotted: 15/16/2008 1:58 PM, Wilhelm, Laura
 Layout Name: SHEET 12
 File Name: C:\DOCUMENTS AND SETTINGS\WILHELM\DESKTOP\ILIAMNA_FINAL_SUBMITTAL_5-16-08\ILIAMNA_ALP_SHEET-12-13.DWG
 Designed By: DG
 Drawn By: DG
 Checked By: CS



ID #	DESCRIPTION	STATION/OFFSET	ELEVATION	SURFACE PENETRATED	SURFACE ELEVATION	AMOUNT PENETRATION	DISPOSITION	STAGE TO CORRECT
NONE	NONE			NONE		NONE	NONE	NONE

ID #	DESCRIPTION	STATION/OFFSET	ELEVATION	SURFACE PENETRATED	SURFACE ELEVATION	AMOUNT PENETRATION	DISPOSITION	STAGE TO CORRECT
NONE	NONE			NONE		NONE	NONE	NONE

- NOTES:
- ELEVATIONS ARE IN FEET.
 - AIRPORT ELEVATION IS 191.78' NAVD88.
 - HORIZONTAL SURFACE IS 150' ABOVE AIRPORT ELEVATION.
 - DRAWING BASED ON U.S.G.S QUAD ILIAMNA C-5, C-6, D-5, D-6.
 - REFER TO THE INNER PORTION OF THE APPROACH SURFACE DRAWINGS FOR CLOSE IN OBSTRUCTIONS, SHEETS 8 - 11.
 - PAVED RUNWAY PRIMARY SURFACE IS 500' WIDE PIKE LAKE WATERWAY PRIMARY SURFACE IS 250' WIDE.
 - NO SEWAGE LAGOONS HAVE BEEN IDENTIFIED WITHIN 10,000 FEET OF THE AIRPORT.
 - ILIAMNA LANDFILL IS 7,880 FEET NORTH OF RUNWAY 17 THRESHOLD, NEWHALEN LANDFILL IS 7,213 FEET FROM RUNWAY 25 THRESHOLD AND 7,776 FEET FROM RUNWAY 35 THRESHOLD.
 - NO PENETRATIONS TO THE EXISTING PART 77 SURFACES. THE HOTEL PENETRATES TRANSITION SURFACE 15' WHEN THE PRIMARY SURFACE WIDENS TO ACCOMMODATE LOWER APPROACH MINIMUMS. HOTEL DOES NOT PENETRATE EXISTING PART 77 SURFACES.



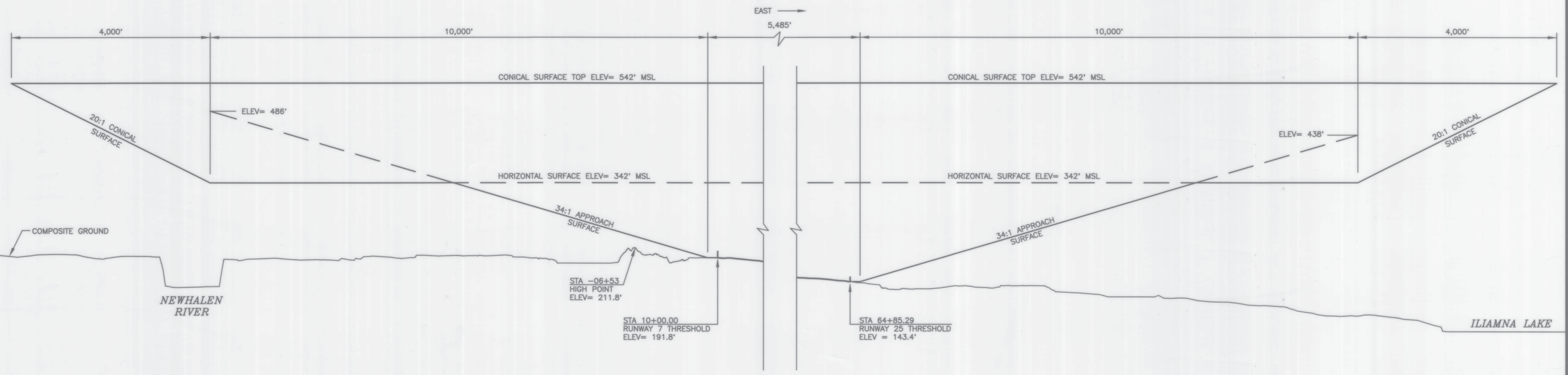
**STATE OF ALASKA
DEPARTMENT OF TRANSPORTATION
AND PUBLIC FACILITIES
CENTRAL REGION**

**ILIAMNA AIRPORT
ILIAMNA, ALASKA
AIRPORT LAYOUT PLAN
AIRPORT AIRSPACE 14 CFR,
PART 77 PLAN**

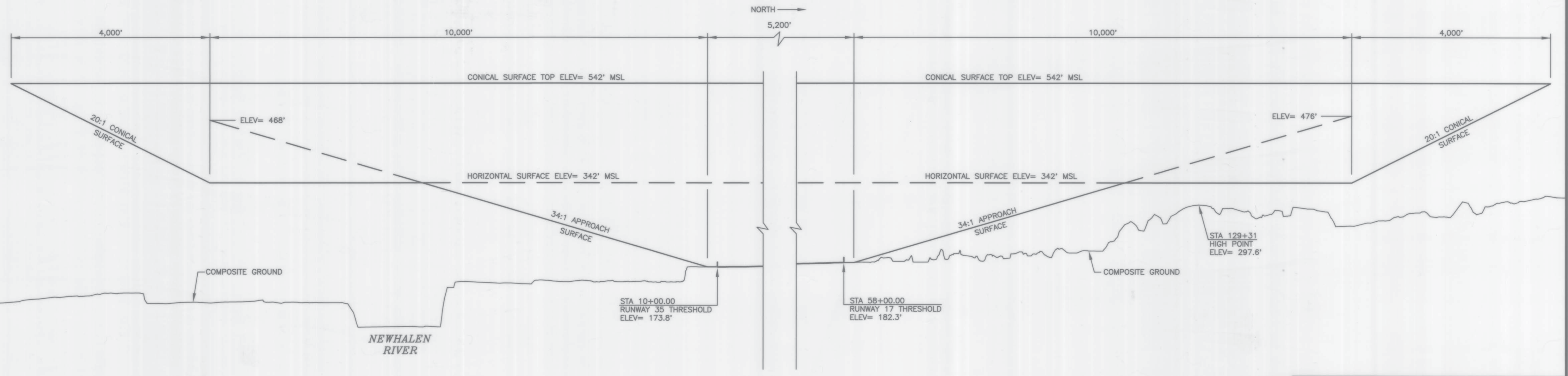
DATE:
05-02-08
SHEET:
12
OF
15

BY	DATE	REVISION

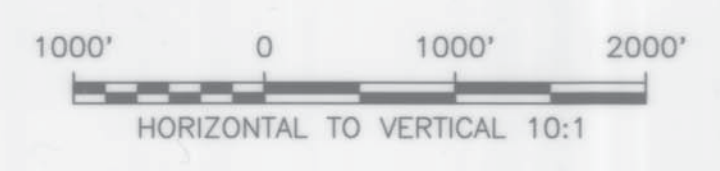
Date Plotted: 5/16/2008 1:58 PM, Wilhelm, Laura
 Layout Name: SHEET 13
 File Name: C:\DOCUMENTS AND SETTINGS\WILHELM\DESKTOP\ILIAMNA_FINAL SUBMITTAL_5-16-08\ILIAMNA_ALP_SHEET-12-13.DWG
 Designed By: DG
 Drawn By: DG
 Checked By: CS



RUNWAY 7/25 PROFILE



RUNWAY 17/35 PROFILE



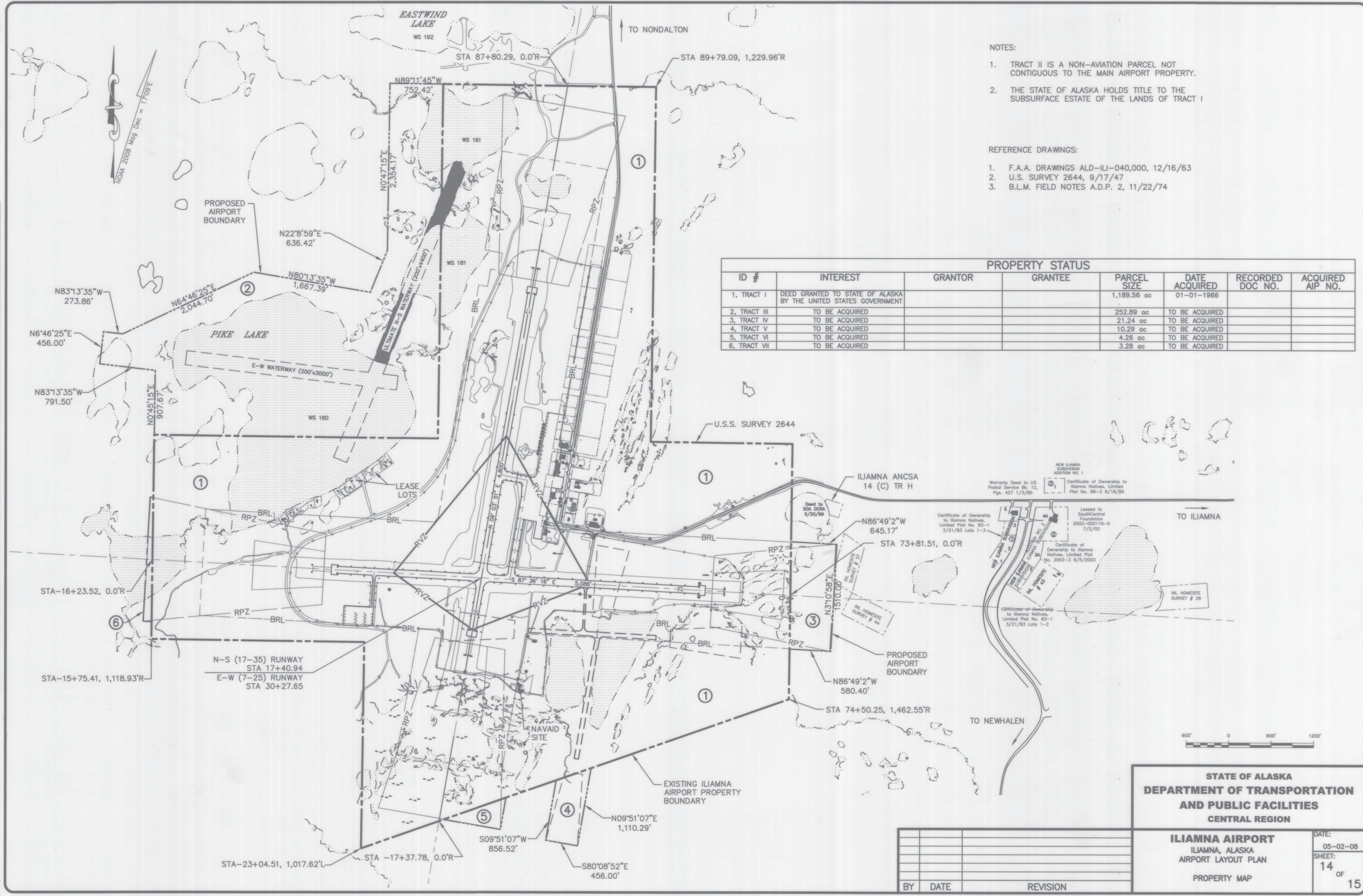
BY	DATE	REVISION

STATE OF ALASKA
DEPARTMENT OF TRANSPORTATION
AND PUBLIC FACILITIES
CENTRAL REGION

ILIAMNA AIRPORT
 ILIAMNA, ALASKA
 AIRPORT LAYOUT PLAN
 AIRPORT AIRSPACE 14 CFR,
 PART 77 PROFILES

DATE: 05-02-08
 SHEET: 13 OF 15

Date Plotted: 5/16/2008 1:58 PM, Wilhelm, Laura
 Layout Name: SHEET 14
 File Name: C:\DOCUMENTS AND SETTINGS\WILHELM\DESKTOP\ILIAMNA_FINAL_SUBMITTAL_5-16-08\ILIAMNA_AIP_SHEET-14.DWG
 Designed By: DG
 Drawn By: DG
 Checked By: CS



- NOTES:
- TRACT II IS A NON-AVIATION PARCEL NOT CONTIGUOUS TO THE MAIN AIRPORT PROPERTY.
 - THE STATE OF ALASKA HOLDS TITLE TO THE SUBSURFACE ESTATE OF THE LANDS OF TRACT I

- REFERENCE DRAWINGS:
- F.A.A. DRAWINGS ALD-ILI-040,000, 12/16/63
 - U.S. SURVEY 2644, 9/17/47
 - B.L.M. FIELD NOTES A.D.P. 2, 11/22/74

ID #	INTEREST	GRANTOR	GRANTEE	PARCEL SIZE	DATE ACQUIRED	RECORDED DOC NO.	ACQUIRED AIP NO.
1, TRACT I	DEED GRANTED TO STATE OF ALASKA BY THE UNITED STATES GOVERNMENT			1,189.56 ac	01-01-1966		
2, TRACT III	TO BE ACQUIRED			252.89 ac	TO BE ACQUIRED		
3, TRACT IV	TO BE ACQUIRED			21.24 ac	TO BE ACQUIRED		
4, TRACT V	TO BE ACQUIRED			10.29 ac	TO BE ACQUIRED		
5, TRACT VI	TO BE ACQUIRED			4.26 ac	TO BE ACQUIRED		
6, TRACT VII	TO BE ACQUIRED			3.28 ac	TO BE ACQUIRED		

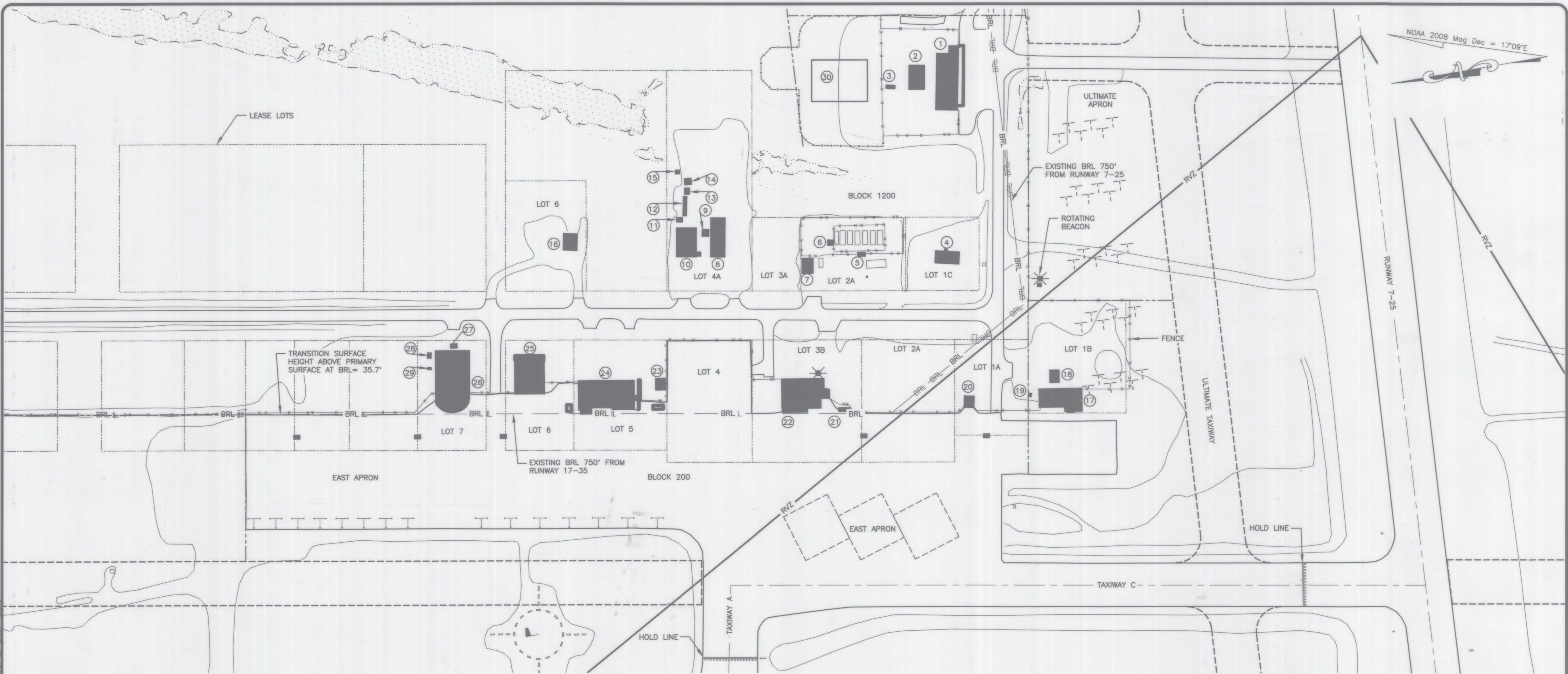
BY	DATE	REVISION

STATE OF ALASKA
DEPARTMENT OF TRANSPORTATION
AND PUBLIC FACILITIES
CENTRAL REGION

ILIAMNA AIRPORT
 ILIAMNA, ALASKA
 AIRPORT LAYOUT PLAN
 PROPERTY MAP

DATE: 05-02-08
 SHEET: 14 OF 15

Date Plotted: 1/5/16/2008 1:59 PM, Wilhelm, Laura
 Layout Name: I:\DOCUMENTS AND SETTINGS\WILHELM, LAURA\DESKTOP\ILIAMNA_FINAL
 File Name: SUBTOTAL_B-16-08-ILIAMNA_A.P. SHEET-15.DWG
 Designed By: DC
 Drawn By: DC
 Checked By: CS



TERMINAL AREA BUILDING TABLE

No.	DESCRIPTION	TOP * ELEVATION	STATION	OFFSET	LOT	BLOCK	OBSTRUCTION MARKING	COMMENTS
1	ARFF BUILDING	188.0'	45+67.98	827.81' L			NONE	
2	ADOT BUILDING	187.1'	45+77.47	895.52' L			NONE	
3	ADOT BUILDING	187.4'	45+64.72	957.46' L			NONE	
4	BUILDING	190.5'	27+65.57	1055.12' R	1C	1200	NONE	
5	FUEL DISPENSER	192.1'	29+39.67	1070.28' R	2A	1200	NONE	
6	STORAGE BUILDING	192.1'	30+03.80	1092.79' R	2A	1200	NONE	
7	BUILDING	192.2'	30+49.92	1035.54' R	2A	1200	NONE	
8	CORE SHED	192.4'	32+33.77	1069.49' R	4A	1200	NONE	
9	OUT BUILDING	191.7'	32+58.80	1111.56' R	4A	1200	NONE	
10	SHOP BUILDING	194.2'	32+97.89	1069.67' R	4A	1200	NONE	
11	STORAGE BUILDING	194.1'	33+11.69	1140.54' R	4A	1200	NONE	
12	STORAGE BUILDING	192.4'	33+01.16	1153.40' R	4A	1200	NONE	
13	STORAGE BUILDING	189.5'	32+96.28	1197.42' R	4A	1200	NONE	
14	STORAGE BUILDING	189.2'	32+93.78	1216.99' R	4A	1200	NONE	
15	STORAGE BUILDING	188.3'	33+15.59	1238.85' R	4A	1200	NONE	
16	STORE	192.2'	35+35.66	1083.40' R	6	1200	NONE	
17	HOTEL	197.2'	25+12.52	750.09' R	1B	200	NONE	189.1' ELEV. TO BUILDING PEAK; BUILDING TO BE REMOVED
18	OUT BUILDING	194.0'	25+45.77	811.90' R	1B	200	NONE	BUILDING TO BE REMOVED
19	OUT BUILDING	195.2'	25+96.97	783.33' R	1B	200	NONE	BUILDING TO BE REMOVED

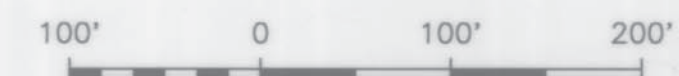
TERMINAL AREA BUILDING TABLE (CONT'D)

No.	DESCRIPTION	TOP * ELEVATION	STATION	OFFSET	LOT	BLOCK	OBSTRUCTION MARKING	COMMENTS
20	GARAGE	198.6'	27+20.83	761.13' R	1A	200	NONE	BUILDING TO BE REMOVED
21	FUEL SHACK	199.8'	29+74.96	753.55' R	3B	200	NONE	
22	FSS & HANGAR	201.1'	30+75.47	752.13' R	3B	200	NONE	205.3' ELEV. TO TOP OF TOWER, 214.36 TO TOP OF ANTENNA
23	BAGGAGE LEAN TO	200.8'	33+50.83	797.94' R	5	200	NONE	
24	TERMINAL & HANGAR	200.9'	34+87.02	748.94' R	5	200	NONE	
25	HANGAR	198.8'	36+18.57	790.08' R	6	200	NONE	
26	HANGAR	200.1'	37+76.09	752.10' R	7	200	NONE	
27	OUT BUILDING	198.7'	37+73.59	884.35' R	7	200	NONE	
28	OUT BUILDING	200.4'	38+23.91	863.90' R	7	200	NONE	
29	OUT BUILDING	200.1'	38+23.72	840.27' R	7	200	NONE	
30	NEW SRE BUILDING	181.2'	45+84.60	1012.35' R	7	1200	NONE	PROPOSED BUILDING

* TOP-OF-BUILDING ELEVATIONS ARE ESTIMATED BY ADDING 35' TO THE GROUND SURFACE ELEVATION LOCATED IN FRONT OF EACH BUILDING

STATION & OFFSET ARE TO THE CENTER OF THE BUILDING FACE CLOSEST TO THE RUNWAY

BUILDINGS 1-3 REFERENCED TO RUNWAY 7-25
 BUILDINGS 4-29 REFERENCED TO RUNWAY 17-35



BY	DATE	REVISION

STATE OF ALASKA
DEPARTMENT OF TRANSPORTATION
AND PUBLIC FACILITIES
CENTRAL REGION

ILIAMNA AIRPORT
 ILIAMNA, ALASKA
 AIRPORT LAYOUT PLAN
 TERMINAL AREA

DATE:
 05-02-08
 SHEET:
 15 OF 15