

Welcome to Carolina Sandhills National Wildlife Refuge

Carolina Sandhills National Wildlife Refuge is one of over 540 national wildlife refuges in the country. The U.S. Fish and Wildlife Service administers the refuge and is responsible for conserving, protecting, and enhancing the nation's fish and wildlife populations and their habitats for the continuing benefit of the public.

The provisions listed below supplement the general regulations that govern public use on national wildlife refuge areas as set forth in Title 50, Code of Federal Regulations. When permitted, hunting, fishing and other public uses will be in accordance with applicable state laws unless otherwise listed. Only the hunting seasons designated in this brochure are allowed on Carolina Sandhills National Wildlife Refuge.

General Provisions and Access

By law, national wildlife refuges are closed to all public use activities unless permitted. Hunting, fishing and other public use activities are permitted on most areas of the refuge. Contact the Refuge Manager for current regulations and authorized activities when visiting the refuge.

Public Entry

The refuge is closed every day from one hour after sunset until one hour before sunrise.

Entry onto Carolina Sandhills National Wildlife Refuge constitutes consent to an inspection of persons and their licenses, permits, vehicles, game bags, creels and all hunting and/or fishing equipment.

Pets

Pets must be under the control of the owner at all times.

Camping and Fires

Camping and fires are prohibited.

Alcoholic Beverages

The use or possession of alcoholic **beverages** is prohibited.

Vehicles

Only legally licensed vehicles are allowed on the refuge.

ATV's are prohibited except for use by disabled persons possessing a refuge special use permit for their use in the designated mobility impaired hunt area.

Roads

Vehicles must remain on established roads unless the road is posted as being closed.

Vehicles may be parked alongside roads in a manner that will not block gates or fire lanes or interfere with the normal flow of traffic.

The speed limit on all refuge roads is 15 MPH, unless posted otherwise.

Disabled Access

People with disabilities that have special access needs should contact the Refuge Manager to request special use access.

Hunters wishing to use an ATV to hunt big game (deer and turkey) must provide a copy of their state disabled hunting license.

Hunters that receive a permit to use an ATV may only use the ATV in the designated mobility impaired hunt area (see map on reverse side of this brochure).

All rules and regulations pertaining to the use of standard vehicles will be in effect for the use of ATV's.

Weapons

Firearms must be unloaded and encased or dismantled when transported in vehicles.

Carrying, possessing, or discharging firearms, air guns, bows and arrows, cross bows, fireworks or explosives is prohibited unless authorized.

Discharging a firearm for a purpose other than to take legal game animals during established hunting seasons is prohibited.

A loaded firearm is defined as ammunition in the chamber or magazine, or percussion caps on muzzleloaders.

Loaded firearms are prohibited within 100 feet of maintained roads or within 500 feet of the paved roads within the refuge.

Discharging a firearm from, on or across any refuge road is prohibited.

Closed Areas and Times

Except during certain hunts, the refuge is closed everyday from one hour after sunset until one hour before sunrise.

Designated areas will be closed seasonally to hunting, fishing and all other public access.

Other areas may be closed for special management and safety reasons.

No hunting Zone

Entering or crossing a “No Hunting Zone” or “Closed Area” to access areas open to hunting is prohibited.

Discharging a firearm within, into or across a “No Hunting Zone” or “Closed Area” is prohibited.

Refuge/Cultural Resources

The removal of any natural, historic or archaeological feature is prohibited.

Special Hunting Regulations

Permits

Hunters must possess a valid refuge General Hunting Permit for all hunts.

A drawn hunting permit is required for the general turkey hunts.

Permits are non-transferable.

Hunters must possess a valid government issued picture ID.

Hunters must possess all applicable licenses, permits and government issued picture ID while in the field.

Check Stations/Check Sheets

All deer and hogs killed on the refuge during modern gun hunts and the youth hunt must be checked at the check station on the date of the kill prior to removing the animal from the refuge.

All deer and hogs killed during the archery and primitive weapons seasons must be self-checked at the check station.

All turkeys killed on the refuge must be tagged and checked in at the refuge headquarters on the date of kill prior to removing the animal from the refuge.

Baiting

Baiting and/or hunting in the vicinity of bait is prohibited.

Baiting means the placing, depositing, exposing, distributing, or scattering of shelled, shucked, or unshucked corn, wheat, or other grain, or other food stuffs, including salt and mineral blocks, to constitute an attraction, lure, or enticement to, on, or over any area.

Hunter Orange

All persons participating in refuge firearms hunts are required to wear an outer garment above the waist which contains a minimum of 500 square inches of unbroken fluorescent orange material that is visible from all sides while hunting and while enroute to and from hunting areas. This does not apply to dove, turkey and raccoon hunters.

Hunter Education

All refuge hunters under the age of 16 must show proof of successfully completing a hunter education/safety course.

Hunters under the age of 16 must be directly supervised (within sight and normal voice contact) by a properly licensed adult at least 21 years of age.

Youth Hunts

A youth hunter is defined as a hunter under the age of 16.

During youth deer and turkey hunts, an adult may supervise only one youth.

During small game hunts, an adult may supervise a maximum of two youths.

Tree Stands

Only portable stands are permitted.

All stands must be removed by the last day of each hunt.

Inserting or driving a nail, screw, spike or other metal object into a tree or to hunt from a tree into which a metal object has been inserted or driven is prohibited.

Hunting Dogs

Deer hunting with dogs is prohibited.

Dogs are required for the raccoon/opossum hunts.

Dogs are permitted for small game and dove hunting.

All dogs are required to wear a collar displaying the owner's name, address and phone number.

Man-Driving

Deer hunting by man-driving is prohibited.

A man-drive is defined as an organized hunting technique including two or more hunters where an attempt is made to drive game animals from cover to shoot, kill, or move animals towards other hunters.

Tree Marking

Marking any tree or other refuge feature with plastic flagging or paint is prohibited.

Painted clothespins or clothespins with reflective tacks attached may be used to mark trails but must be removed at the end of each hunt.

Deer and Turkey Hunt Hours of Access

Deer and turkey hunters are prohibited from entering the refuge prior to 4 am on scheduled hunt days. They must leave the refuge no later than two hours after legal sunset.

Prehunt Scouting

The refuge is open (except designated closed areas) for prehunt scouting from one hour before sunrise until one hour after sunset.

Weapons are prohibited while scouting.

Hunting Seasons

Refuge areas open to hunting are designated on the map of this leaflet.

The following list includes the specific hunts allowed on the refuge.

Mourning Dove and Woodcock

Dove hunts will be conducted at designated fields on Thursdays in September. Contact the refuge office in August for details.

During the September dove hunts, the possession or use of more than 50 shotgun shells is prohibited.

Mourning doves and woodcock may be taken when the state season for these species coincides with the refuge quail season.

Deer

The daily bag limit is two deer and the season limit (total of all hunts) is five deer, at least two of which must be antlerless. Unlimited hogs can be harvested while deer hunting.

Either-sex hunting is permitted on all hunting days. On South Carolina Department of Natural Resources (SCDNR) designated either-sex days, which are October 11, 18, 25 and November 1, 8, 15, 22 and December 20, antlerless deer do not have to be tagged. On all other hunting days, antlerless deer must be tagged with an individual antlerless deer tag purchased from SCDNR. An antlerless deer is defined as a deer with no antlers or an antlered deer with less than two inches of antler visible above the hairline.

Archery Deer

- October 6-11, 2008
- December 8-13, 2008 and December 15-20, 2008
- Crossbows permitted in accordance with state regulations.

Primitive Weapons Deer

- October 24-25, 2008 and October 31-November 1, 2008
- Bows and arrows
- Muzzleloading shotguns 20 gauge or larger
- Muzzleloading rifles .36 caliber or larger
- Crossbows permitted in accordance with state regulations

Modern Gun Deer

- November 7-8, 2008, November 14-15, 2008, November 21-22, 2008
- Shotguns, centerfire rifles, and all primitive weapons
- Handguns .357 caliber or larger and a barrel length no less than six inches
- No military or hard jacketed ammunition

Youth Deer hunt (under 16 years old)

- October 18, 2008
- Shotguns, centerfire rifles, and all primitive weapons
- Handguns .357 caliber or larger and a barrel length no less than six inches.
- No military or hard jacketed ammunition.

Quail

Wednesdays and Fridays only during state season.

Rabbit

Tuesdays, Thursdays and Saturdays only during the month of January.

Raccoon/Opossum

February 1-10, 2009

Turkey

The bag limit is two (2) bearded gobblers for the entire hunt. Turkeys killed on the refuge count towards your state bag limit.

Youth Turkey: March 28, 2009

General Turkey:

April 2-4, 2009

April 9-11, 2009

Hunters must have a drawn permit to participate in this hunt. Applications will be available in September by mail or in person from the refuge office. Applications will not be mailed after February 20 and must be obtained in person after this date. Completed turkey hunt applications, along with a \$12.50 non-refundable application/hunt fee, must be received by March 1, 2009. A random, computerized drawing will be conducted during the first week of March, selecting 125 hunters for each hunt. Permits will be mailed to successful applicants.

Carolina Sandhills

National Wildlife Refuge Hunting Regulations and Permit 2008-2009



For the convenience of the readers, major regulations changes appear in blue text.

Carolina Sandhills National Wildlife Refuge
General Hunt Permit 2008-2009

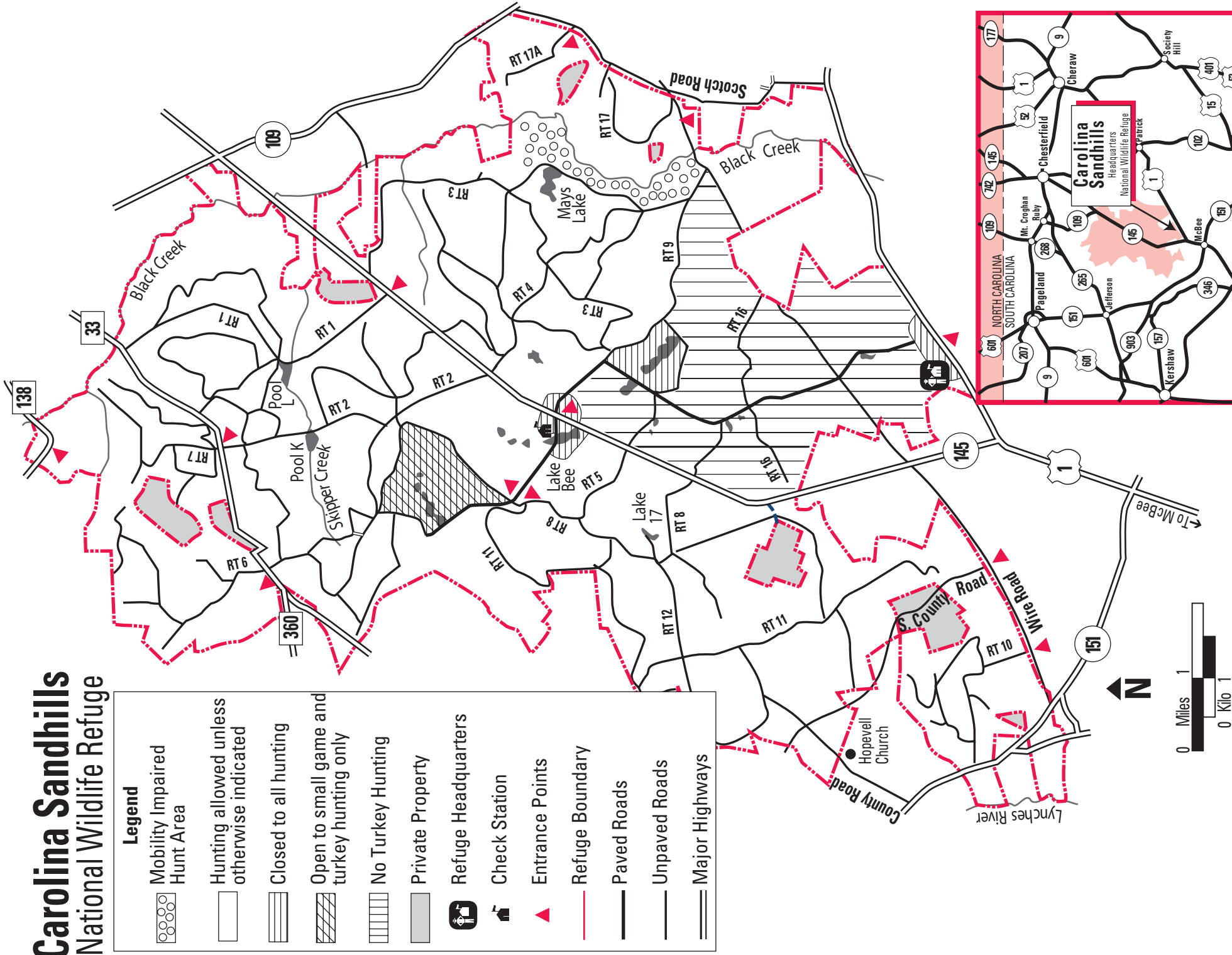
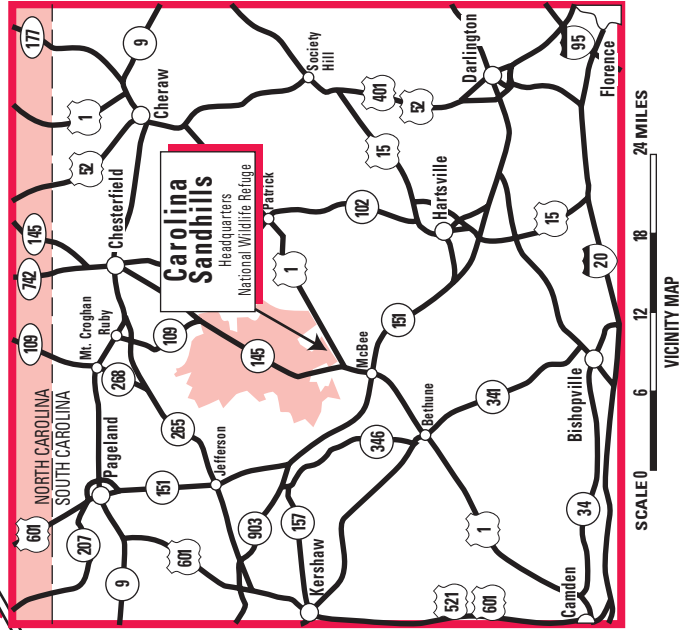
I have read and understand these refuge regulations.

Signed _____

Carolina Sandhills
National Wildlife Refuge
23734 Highway 1
McBee, SC 29101
843/335 8401
<http://carolinasandhills.fws.gov>
FW4RWCarolinaSandhills@fws.gov

U.S. Fish & Wildlife Service
1 800/344 WILD

July 2008



Carolina Sandhills National Wildlife Refuge

Legend

- Mobility Impaired Hunt Area
- Hunting allowed unless otherwise indicated
- Closed to all hunting
- Open to small game and turkey hunting only
- No Turkey Hunting
- Private Property
- Refuge Headquarters
- Check Station
- Entrance Points
- Refuge Boundary
- Paved Roads
- Unpaved Roads
- Major Highways

Signs Protect Visitors and Resources

Millions of people visit national wildlife refuges each year. The impact of human activity, if not regulated, can degrade these wildlands. Signs control recreational activities while protecting natural resources on the refuge. Please respect the following signs.



This sign delineates the refuge boundary. Entry is permitted only for authorized uses (hunting, fishing, sightseeing, etc.) in accordance with refuge regulations.



This area is closed to all entry. No hunting fishing or sightseeing is permitted. No roads or trails are open to the public.



This area is closed to all hunting. Firearms and archery equipment are strictly prohibited (see map).