

# Chickasaw National Wildlife Refuge Public Use Regulations 2010-2011

## Refuge Hunting Permit 2010-2011

When signed and in your possession, this brochure serves as your permit for all refuge hunts, and acknowledges your understanding of the regulations contained herein.

I have read and understand these refuge regulations.

\_\_\_\_\_  
Hunter's Signature

### Small Game

Squirrel, Rabbit, Quail, Raccoon, and Opossum. State season and bag limits apply **except** squirrel, rabbit and quail closed during youth, gun, and muzzleloader deer hunts and Spring squirrel season **closed**. Raccoon and opossum are open state wide **except** for Friday and Saturday nights during youth, gun and muzzleloader deer hunts. Only approved nontoxic shot allowed when using a shotgun.

### Archery Only Deer

September 25 - October 29, 2010  
November 1-5, December 6-17, 2010  
No hunter quota.  
Limit same as State.  
Counts in Unit A bag.

### Youth Gun/Archery Deer

Two hunts.  
October 30-31, 2010  
January 15-16, 2011  
No hunter quota.  
Limit same as State.  
Counts in Unit A bag.

### Muzzleloader/Archery Deer

One hunt.  
November 6-19, 2010  
No hunter quota.  
Limit same as State.  
Counts in Unit A bag.

### Gun/Muzzleloader/Archery Deer

Two hunts.  
November 20 - December 5, 2010,  
December 18, 2010 - January 9, 2011.  
No hunter quota. Limit same as State. Counts in Unit A bag.

### Quota Turkey

First Season April 7-10, 2011-1(one) bearded turkey.  
Counts as a bonus turkey.  
  
Second Season April 14-17, 2011-1(one) bearded turkey.  
Counts as a bonus turkey.

Third Season April 21-24, 2011-1(one) bearded turkey.  
Counts as a bonus turkey.

Permits: Quota turkey hunt permit required. See *Quota Hunt Permit Application Procedures*. Permits will be limited to 75 per hunt, successful applicants are eligible for only one hunt.

Signed refuge permits and applicable State licenses required. Hunters must check turkey out on date of kill at nearest state checking station and record **Chickasaw NWR** as the location of kill.

### Quota Hunt Permit Application Procedures

An agency may not conduct or sponsor, and a person is not required to respond to a collection of information unless it displays a currently valid Office of Management and Budget (OMB) control number. OMB has approved this information collection and assigned control number 1018-0140 which expires January 31, 2012.

To apply for a quota hunt permit, type or plainly print your name, address, and phone number w/ area code on the front of a U.S. Postal Service Postcard. Unofficial postcards will be discarded prior to drawing. Send all postcards in an envelope addressed to the Refuge Manager at the address on the back of this brochure. Turkey applications must be postmarked during January.

A total of up to 4 hunters may apply on the same postcard (one hunter's information on the front and the other hunter's information on the back). Indicate season preference on the application. Submission of more than one postcard will result in disqualification of the applicant(s).

### Juveniles

Both the juvenile and his/her supervising adult must apply together on the same postcard to be selected for a quota hunt. If selected, the juvenile must be under direct supervision by the adult during the hunt.

### Other Hunting Information

Applicants selected by drawing will be notified by mail to submit \$12.50 per person (**cashier's check or money order only** payable to the U.S. Fish and Wildlife Service) to receive a quota permit. Fees are not refundable and permits are not transferable. Of funds collected, 80% are applied to defraying the administrative cost of the hunt while the remainder is deposited into the Migratory Bird Conservation Fund.

Coyotes and beavers may be taken *incidentally* during scheduled hunts on the refuge. Legal methods of take include legal hunting equipment utilized during specified hunting seasons listed in this brochure. There are no bag limits. Pre-hunt scouting is permitted except during big game hunts (the possession of hunting gear is **prohibited**.)

### Specific Fishing Regulations

#### Chickasaw NWR

*Sport fishing* is permitted from legal sunrise to legal sunset (Central time) on Chickasaw NWR (see map for specific locations and dates of closures). You may use a bow and arrow or a gig to take non-game fish on refuge waters.

*Possession of unauthorized fishing gear, including trotlines, limblines, juglines, yo-yo's, nets, spears and snag hooks, is prohibited* while on Chickasaw NWR.

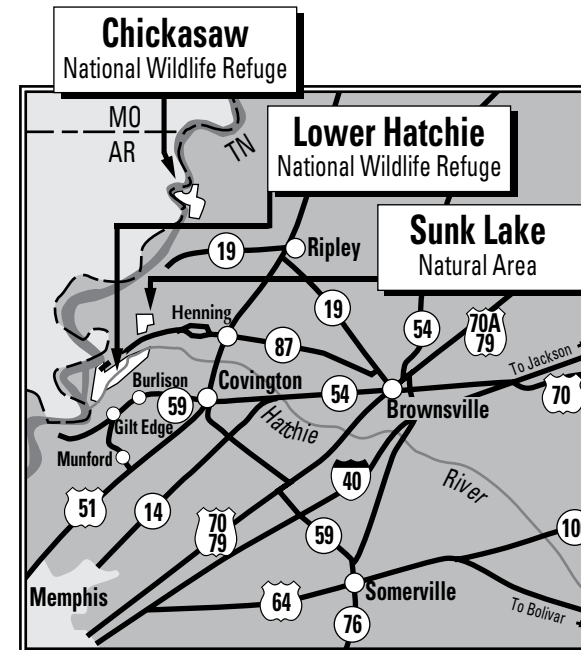
Visitors must comply with all applicable state fishing and boating regulations.

#### Prohibited

Frogging and turtling.

Destroying or cutting vegetation is prohibited. The possession of axes, saws, machetes, or other tools for cutting vegetation are prohibited on the refuge.

Horses, mules, and burros are permitted only on roads and trails open to motorized traffic. Riding off roads into fields, woods or on foot trails is prohibited.



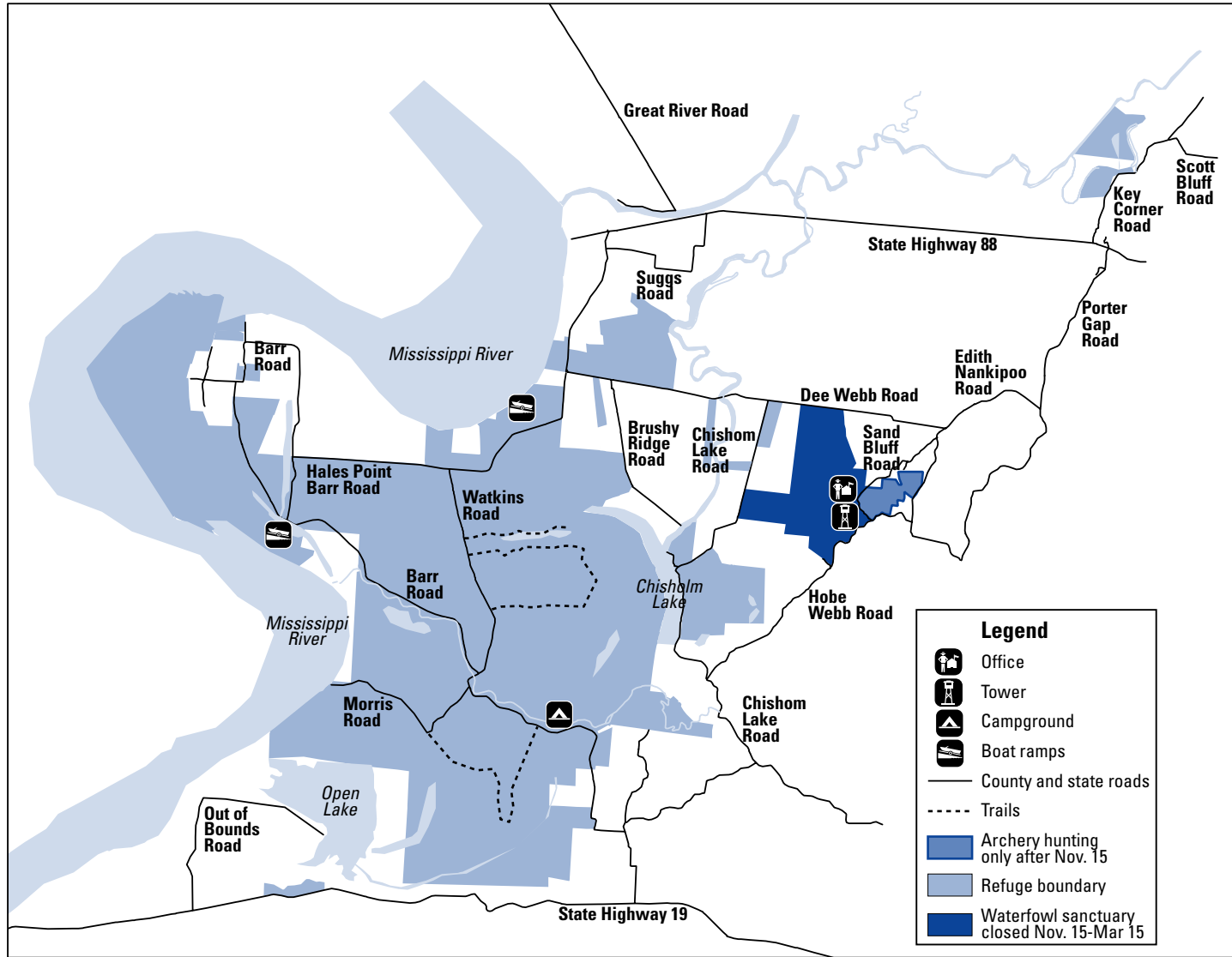
Chickasaw  
National Wildlife Refuge  
1505 Sand Bluff Road  
Ripley, TN 38063  
731/635 7621  
<http://chickasaw.fws.gov>

U.S. Fish & Wildlife Service  
1 800/344 WILD

June 2010



# Chickasaw National Wildlife Refuge



Chickasaw National Wildlife Refuge plays an important role in our National Wildlife Refuge system. This area was established to provide essential habitat for migratory birds in the Lower Mississippi Valley. The U.S. Fish and Wildlife Service administers the Refuge System and is responsible for conserving, protecting, and enhancing the nation's fish and wildlife populations and their habitats for the continuing benefit of people.

The provisions listed below supplement the general regulations which govern public use on wildlife refuge areas as set forth in *Title 50, Code of Federal Regulations*. When permitted, hunting, fishing, and other public uses will be in accordance with applicable state laws unless otherwise listed.

## General Provisions and Access Regulations

### Access

By law, National Wildlife Refuges are closed to all recreational activities unless expressly permitted. Hunting, fishing, and certain other recreational uses are permitted on most areas of the refuge. The refuge is a Day Use Area Only with the exception of legal hunting activities. No person shall access the refuge earlier than two hours before legal sunrise. *Contact the Refuge Manager for current regulations and authorized activities before entering these areas.*

### Vehicles

Only legally licensed vehicles are allowed on the refuge. *ATC's and ATV's are prohibited*, except by disabled individuals possessing a refuge special use permit.

Parking as to block travel through refuge access roads, gates and trails is prohibited.

### Disabled Access

Most refuge areas are accessible to the disabled. Disabled persons are encouraged to participate in refuge hunts and other activities. Contact the refuge manager for guidelines to obtain special use access.

### Roads

Roads may be closed at any time due to adverse weather conditions or management needs. Vehicles must remain on established roads as indicated on the maps on this leaflet. Vehicles may be parked alongside open roads in a manner that will not interfere with the normal flow of traffic. *Please avoid driving on refuge roads during wet conditions as damage to the roads will result.*

### Closed Areas

Designated areas will be closed to hunting, fishing, and all other public access during fall and winter months to provide resource protection (see map for specific locations and dates of closures). Other areas may be closed for special management or safety reasons. *All refuge access is prohibited after dark unless specifically authorized by the refuge manager.*

### Camping and Fires

Camping and fires are prohibited on Chickasaw NWR except during the refuge small and big game hunts in designated areas only. Please remove all litter from the refuge.

### Boats

Boats used for any recreational activity (i.e. hunting, fishing and wildlife viewing) must be removed from Chickasaw NWR daily.

### Weapons

Persons possessing, transporting, or carrying firearms on National Wildlife Refuges must comply with all provisions of state and local law. Persons may only use (discharge) firearms in accordance with refuge regulations (50 CFR 27.42 and specific refuge regulations in 50 CFR Part 32).

Carrying, possessing, or discharging of fireworks, or explosives on national wildlife refuges is prohibited.

The use or possession of air guns, spears or similar weapons on national wildlife refuges is prohibited.

### Dogs

Dogs are permitted for small game and migratory bird hunting. All dogs are required to wear a collar displaying the owner's name, address, and telephone number.

### Refuge/Cultural Resources

All government property including natural, historic, and archaeological features are protected by Federal Law. Searching for or removal of objects of antiquity or other value is strictly prohibited.

### Tree Stands

All tree stands must be removed from the refuge daily. The use of nails, wire, screws, or bolts to attach a tree stand to a tree, or hunting from a tree into which a metal object has been driven to support a hunter is prohibited.

### Tree Marking

It is unlawful to mark any tree or other refuge feature with paint or similar substance. Please remove all flagging tape and other marking material upon leaving the refuge.

### Hunter Education

Hunter's born on or after 1/1/69 must possess proof that they have successfully completed a hunter education course.

### Youth Supervision

An adult hunter 21 years of age or older must remain in sight of and in normal voice contact with all youth hunters 15 years of age or younger. One adult hunter may supervise no more than two youth hunters (only one youth hunter may be supervised during big game hunting activities.) During youth-only hunts, the juvenile must be supervised by a non-hunting adult. Hunters under 10-years-old can participate during the statewide youth hunts if accompanied by an adult 21 years of age or older.

## Specific Hunting Regulations

Big game killed on the refuge must be checked at the nearest State Checking Station on date of kill. Please specify that the game was taken on Chickasaw NWR. All deer harvested on the refuge must be counted toward the Unit A bag limit.

### Nontoxic shot

All hunters using shotguns for hunting wild turkey, small game, opossum, raccoon and migratory game birds on Chickasaw NWR must use and possess ammunition containing nontoxic shot only.

### Waterfowl

Ducks, Geese, Coots, and Mergansers may be hunted on Chickasaw NWR. State season and bag limits apply **except** legal shooting hours are 30 minutes before sunrise to 12 noon. Only portable blinds may be used. All blinds, boats, and decoys must be removed from the refuge by 1 pm daily. Youth hunting season same as statewide, see Youth Supervision Section regarding supervision requirements.

### Other Migratory Birds

Mourning dove, Woodcock, Snipe. State season and bag limits apply **except** closed during youth, gun, and muzzleloader deer hunts. Only approved nontoxic shot may be used.