

LARGE TRUCK CRASH FACTS 2004



U.S. Department
of Transportation

**Analysis Division
Federal Motor Carrier
Safety Administration**

March 2006



U.S. Department
of Transportation

FMCSA-RI-06-040

LARGE TRUCK CRASH FACTS 2004

March 2006

**Analysis Division
Federal Motor Carrier Safety Administration**

**For more information, contact the Analysis Division at (202) 366-1861,
or visit our web sites at www.fmcsa.dot.gov and ai.volpe.dot.gov.**

Contents

Introduction	1
Trends	3
Crashes	31
Vehicles	39
People	47

Tables

Trends

1. Large Truck Fatal Crash Statistics, 1975-2004	4
2. Passenger Vehicle Fatal Crash Statistics, 1975-2004	6
3. All Motor Vehicle Fatal Crash Statistics, 1975-2004	9
4. Large Truck Injury Crash Statistics, 1988-2004	10
5. Large Truck Property Damage Only (PDO) Crash Statistics, 1988-2004	10
6. Passenger Vehicle Injury Crash Statistics, 1988-2004.....	11
7. Passenger Vehicle Property Damage Only (PDO) Crash Statistics, 1988-2004	11
8. All Motor Vehicle Injury Crash Statistics, 1988-2004.....	15
9. All Motor Vehicle Property Damage Only (PDO) Crash Statistics, 1988-2004	15
10. Vehicle Occupants Killed in Large Truck Crashes by Vehicle Type, 1975-2004	16
11. Nonmotorists and Vehicle Occupants Killed in Large Truck Crashes, 1975-2004	17
12. Drivers in Fatal Crashes by Vehicle Type and Blood Alcohol Concentration, 1982-2004	18
13. Combination Truck Fatal Crash Statistics, 1975-2004	19
14. Single-Unit Truck Fatal Crash Statistics, 1975-2004.....	20
15. Combination Truck Injury Crash Statistics, 1988-2004.....	22
16. Combination Truck Property Damage Only (PDO) Crash Statistics, 1988-2004	22
17. Single-Unit Truck Injury Crash Statistics, 1988-2004.....	23
18. Single-Unit Truck Property Damage Only (PDO) Crash Statistics, 1988-2004	23
19. Large Truck and Passenger Vehicle Fatal Crashes per 100 Million Vehicle Miles Traveled by Roadway Function Class, 1981-2004	25
20. Fatalities in Crashes Involving Large Trucks by State, 1991-2004	26
21. Fatal Crashes Involving Large Trucks by State, 1991-2004	27
22. Large Trucks Involved in Fatal Crashes by State, 1991-2004	28
23. Single-Vehicle Fatal Crashes Involving Large Trucks by State, 1991-2004	29
24. Multiple-Vehicle Fatal Crashes Involving Large Trucks by State, 1991-2004	30

Tables (Continued)

Crashes

25. Crashes Involving Large Trucks by First Harmful Event and Crash Severity 32

26. Fatal Crashes Involving Large Trucks by Speed Limit 33

27. Fatal Crashes Involving Large Trucks by Roadway Function Class 33

28. Crashes Involving Large Trucks by Time of Day and Crash Severity 34

29. Crashes Involving Large Trucks by Day of Week and Crash Severity 34

30. Crashes Involving Large Trucks by Trafficway Flow and Crash Severity 35

31. Crashes Involving Large Trucks by Relation to Junction and Crash Severity 35

32. Crashes Involving Large Trucks by Relation to Roadway and Crash Severity 36

33. Crashes Involving Large Trucks by Weather Conditions and Crash Severity 37

34. Crashes Involving Large Trucks by Road Surface Conditions and Crash Severity 37

35. Crashes Involving Large Trucks by Light Conditions and Crash Severity 37

36. Crashes Involving Large Trucks by Construction/Maintenance Zone and Crash Severity 38

Vehicles

37. Large Trucks in Crashes by Vehicle Configuration 40

38. Large Trucks in Crashes by Cargo Body Type 41

39. Large Trucks in Crashes by Gross Vehicle Weight Rating 41

40. Large Trucks in Crashes by Hazardous Materials (HM) Cargo 42

41. Large Trucks in Crashes by Hazardous Materials (HM) Cargo Type and HM Release 42

42. Large Trucks in Crashes by Initial Point of Impact 43

43. Large Trucks in Crashes by Most Harmful Event for the Large Truck 44

44. Large Trucks in Crashes by Jackknife Occurrence 44

45. Large Trucks in Crashes with Passenger Vehicles by Crash Type and Severity 45

46. Large Trucks in Fatal Crashes with Passenger Vehicles by Crash Type
and Driver-Related Factors Recorded 45

People

47. Persons Killed and Injured in Crashes Involving Large Trucks 48

48. Persons Killed in Crashes Involving Large Trucks by Age and Sex 49

49. Persons Killed in Crashes Involving Passenger Vehicles by Age and Sex 49

50. Persons Injured in Crashes Involving Large Trucks by Age and Sex 50

51. Persons Injured in Crashes Involving Passenger Vehicles by Age and Sex 50

52. Persons Killed and Injured in Crashes Involving Large Trucks by Time of Day 51

53. Drivers of Large Trucks in Crashes by Age, Sex, and Crash Severity 52

54. Drivers of Passenger Vehicles in Crashes by Age, Sex, and Crash Severity 53

55. Drivers of Large Trucks in Fatal Crashes by Restraint Use and Ejection from the Vehicle 54

56. Drivers of Large Trucks in Fatal Crashes by Commercial Drivers License (CDL) Status
and License Compliance 55

57. Drivers of Large Trucks in Fatal Crashes by Driver-Related Factors and Violations Recorded 56

Figures

1. Fatal Crashes, Vehicles in Fatal Crashes, and Fatalities in Large Truck Crashes, 1975-2004	5
2. Large Trucks and Passenger Vehicles Involved in Fatal Crashes per 100 Million Vehicle Miles Traveled, 1975-2004.	7
3. Fatalities in Crashes Involving Large Trucks and Passenger Vehicles per 100 Million Vehicle Miles Traveled, 1975-2004.	8
4. Large Trucks and Passenger Vehicles Involved in Injury Crashes per 100 Million Vehicle Miles Traveled, 1988-2004.	12
5. Persons Injured in Large Truck and Passenger Vehicle Crashes per 100 Million Vehicle Miles Traveled, 1988-2004.	13
6. Large Trucks and Passenger Vehicles Involved in Property Damage Only Crashes per 100 Million Vehicle Miles Traveled, 1988-2004.	14
7. Fatalities in Combination Truck, Single-Unit Truck, and Passenger Vehicle Crashes per 100 Million Vehicle Miles Traveled, 1975-2004.	21
8. Persons Injured in Combination Truck, Single-Unit Truck, and Passenger Vehicle Crashes per 100 Million Vehicle Miles Traveled, 1988-2004.	24

Introduction

This annual edition of *Large Truck Crash Facts* contains descriptive statistics about fatal, injury, and property damage only crashes involving large trucks in 2004. Selected crash statistics on passenger vehicles are also presented for comparison purposes.

Data Sources

The information in this report was compiled by the Analysis Division of the Federal Motor Carrier Safety Administration (FMCSA). The major sources for the data are described below:

- ◆ **Fatality Analysis Reporting System (FARS).** FARS, maintained by the National Highway Traffic Safety Administration (NHTSA), is a census of fatal crashes involving motor vehicles traveling on public trafficways. FARS is recognized as the most reliable national crash database, but it contains information only on fatal crashes. A large truck is defined in FARS as a truck with a gross vehicle weight rating (GVWR) of more than 10,000 pounds.
- ◆ **General Estimates System (GES).** GES, also maintained by NHTSA, is a probability-based nationally representative sample of all police-reported fatal, injury, and property damage only crashes. The data from GES yield national estimates, calculated using a weighting procedure, but cannot give State-level estimates. Also, GES is a sample of motor vehicle crashes, and the results generated are estimates. For this reason, all GES data shown in this report are rounded to the nearest thousand. The GES definition of a large truck is the same as the FARS definition.
- ◆ **Motor Carrier Management Information System (MCMIS) Crash File.** The MCMIS Crash File, maintained by FMCSA, contains data on trucks and buses in crashes that meet the National Governors' Association (NGA)/SAFETYNET recommended threshold. An NGA/SAFETYNET reportable crash must involve a truck, used for commercial purposes, with a GVWR or gross combination weight rating greater than 10,000 pounds; or a commercial bus designed to transport more than eight people, including the driver. The crash must result in at least one fatality, at least one injury involving immediate medical attention away from the crash scene, or at least one vehicle disabled as a result of the crash and transported away from the crash scene. The crashes are reported by the States to FMCSA through the SAFETYNET computer software.

The MCMIS Crash File is intended to be a census of trucks and buses involved in fatal, injury and towaway crashes; however, some States do not report all FMCSA-eligible crashes. For 2004, States reported 139,211 trucks involved in crashes through SAFETYNET to the MCMIS Crash File. FMCSA continues to work with the States to improve data quality and reporting of all eligible large truck crashes to the MCMIS crash file.

FARS, GES, and MCMIS describe the events and details of motor vehicle crashes, but they do not include data on crash causation or fault.

- ◆ **Highway Statistics.** *Highway Statistics* is an annual publication of the Office of Highway Policy Information of the Federal Highway Administration (FHWA). State agencies report the data, ranging from driver licensing to highway finance, and FHWA aggregates them to get national totals. This report takes vehicle miles traveled and vehicle registrations from Table VM-1, "Annual Vehicle Distance Traveled in Miles and Related Data" of *Highway Statistics*.

Organization of the Report

This year's report is organized into four chapters: Trends, Crashes, Vehicles, and People. The Trends chapter shows data for 2004 in the context of available historical data for past years. In the other chapters, the 2004 data are shown in different ways, according to what is being counted. The Crashes chapter counts numbers of crashes; the Vehicles chapter counts vehicles in crashes; and the People chapter counts persons of all types involved in crashes. Four different types of counts are shown:

- ◆ **Crashes:** Numbers of crashes involving various vehicle types.
- ◆ **Vehicles in Crashes:** Numbers of vehicles involved in crashes. These counts may be larger than the number of crashes (fatal, injury, or property damage only), because more than one vehicle may be involved in a single crash.
- ◆ **People in Crashes:** Numbers of people killed or injured in crashes. These counts generally are larger than the number of crashes (fatal or injury), because more than one person may be killed or injured in a single crash. People killed or injured may be occupants of a truck, occupants of another vehicle, or nonmotorists (pedestrians or pedalcyclists).
- ◆ **Drivers in Crashes:** Numbers of vehicle drivers involved in crashes. These counts generally are equal to the numbers of vehicles involved in crashes.

Trends

The tables in this chapter present large truck crash statistics over time. Fatal crash statistics generally are available from 1975, the first year of FARS data, through 2004. In some cases, such as for roadway function class or alcohol involvement, data are available only from 1981 or 1982 through 2004. Nonfatal crash statistics are available from 1988, the first year of GES data, through 2004. The statistics shown in this chapter represent crashes, vehicles, drivers, fatalities, and injuries in crashes. Below is a summary of some of the trend information in this section:

- ◆ Over the past 20 years (from 1984 to 2004) there has been a 51-percent increase in registered large trucks and an 84-percent increase in miles traveled by large trucks.
- ◆ Over the same time period, the number of large trucks involved in fatal crashes has declined by 5 percent, and the vehicle involvement rate for large trucks in fatal crashes has declined by 49 percent.
- ◆ Over the past 10 years (from 1994 to 2004) there has been a 24-percent increase in registered large trucks and a 33-percent increase in miles traveled by large trucks.
- ◆ The number of large trucks involved in injury crashes has decreased by 9 percent over the past 10 years, and the vehicle involvement rate for large trucks in injury crashes has declined by 32 percent.
- ◆ The number of large trucks involved in property damage only crashes has decreased by 10 percent over the past 10 years, and the vehicle involvement rate for large trucks in property damage only crashes has declined by 32 percent.
- ◆ Alcohol involvement (blood alcohol concentration of 0.01 gram per deciliter [g/dL] or more) for large truck drivers in fatal crashes has declined by 77 percent over the past 10 years.

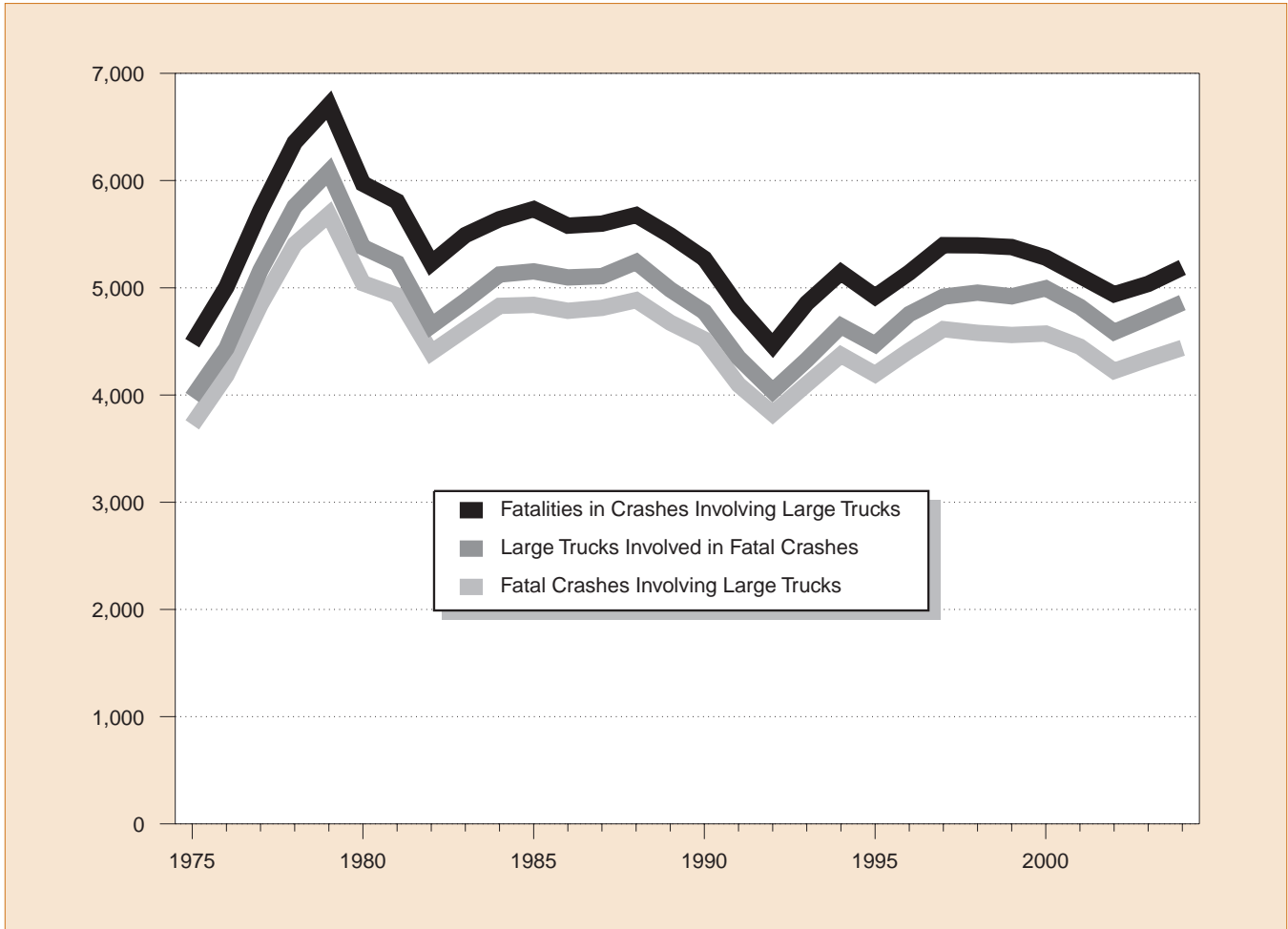
Table 1. Large Truck Fatal Crash Statistics, 1975-2004

Year	Fatal Crashes	Vehicles Involved	Occupant Fatalities	Total Fatalities	Million Vehicle Miles Traveled	Fatal Crashes per 100 Million Vehicle Miles Traveled	Vehicles Involved in Fatal Crashes per 100 Million Vehicle Miles Traveled	Fatalities per 100 Million Vehicle Miles Traveled	Large Trucks Registered
1975	3,722	3,977	961	4,483	81,330	4.58	4.89	5.51	5,362,369
1976	4,184	4,435	1,132	5,008	86,070	4.86	5.15	5.82	5,575,185
1977	4,843	5,164	1,287	5,723	95,021	5.10	5.43	6.02	5,689,903
1978	5,405	5,759	1,395	6,356	105,739	5.11	5.45	6.01	5,859,807
1979	5,684	6,084	1,432	6,702	109,004	5.21	5.58	6.15	5,891,571
1980	5,042	5,379	1,262	5,971	108,491	4.65	4.96	5.50	5,790,653
1981	4,928	5,230	1,133	5,806	108,702	4.53	4.81	5.34	5,716,278
1982	4,396	4,646	944	5,229	111,423	3.95	4.17	4.69	5,590,415
1983	4,615	4,877	982	5,491	116,132	3.97	4.20	4.73	5,508,392
1984	4,831	5,124	1,074	5,640	121,796	3.97	4.21	4.63	5,401,075
1985	4,841	5,153	977	5,734	123,504	3.92	4.17	4.64	5,996,337
1986	4,785	5,097	926	5,579	126,675	3.78	4.02	4.40	5,720,880
1987	4,813	5,108	852	5,598	133,517	3.60	3.83	4.19	5,718,266
1988	4,885	5,241	911	5,679	137,985	3.54	3.80	4.12	6,136,884
1989	4,674	4,984	858	5,490	142,749	3.27	3.49	3.85	6,226,482
1990	4,518	4,776	705	5,272	146,242	3.09	3.27	3.60	6,195,876
1991	4,097	4,347	661	4,821	149,543	2.74	2.91	3.22	6,172,146
1992	3,825	4,035	585	4,462	153,384	2.49	2.63	2.91	6,045,205
1993	4,101	4,328	605	4,856	159,888	2.56	2.71	3.04	6,088,155
1994	4,373	4,644	670	5,144	170,216	2.57	2.73	3.02	6,587,885
1995	4,194	4,472	648	4,918	178,156	2.35	2.51	2.76	6,719,421
1996	4,413	4,755	621	5,142	182,971	2.41	2.60	2.81	7,012,615
1997	4,614	4,917	723	5,398	191,477	2.41	2.57	2.82	7,083,326
1998	4,579	4,955	742	5,395	196,380	2.33	2.52	2.75	7,732,270
1999	4,560	4,920	759	5,380	202,688	2.25	2.43	2.65	7,791,426
2000	4,573	4,995	754	5,282	205,520	2.23	2.43	2.57	8,022,649
2001	4,451	4,823	708	5,111	209,032	2.13	2.31	2.45	7,857,675
2002	4,224	4,587	689	4,939	214,603	1.97	2.14	2.30	7,927,280
2003	4,335	4,721	726	5,036	217,917	1.99	2.17	2.31	7,756,888
2004	4,440	4,862	761	5,190	226,504	1.96	2.15	2.29	8,171,364

Note: A large truck is defined as a truck with a gross vehicle weight rating (GVWR) greater than 10,000 pounds (includes medium and heavy trucks).

Sources: Vehicle Miles of Travel and Registered Vehicles: Federal Highway Administration. Fatal Crashes, Vehicles Involved, and Fatalities: National Highway Traffic Safety Administration, Fatality Analysis Reporting System (FARS).

Figure 1. Fatal Crashes, Vehicles in Fatal Crashes, and Fatalities in Large Truck Crashes, 1975-2004



Note: A large truck is defined as a truck with a gross vehicle weight rating (GVWR) greater than 10,000 pounds.
 Source: National Highway Traffic Safety Administration, Fatality Analysis Reporting System (FARS).

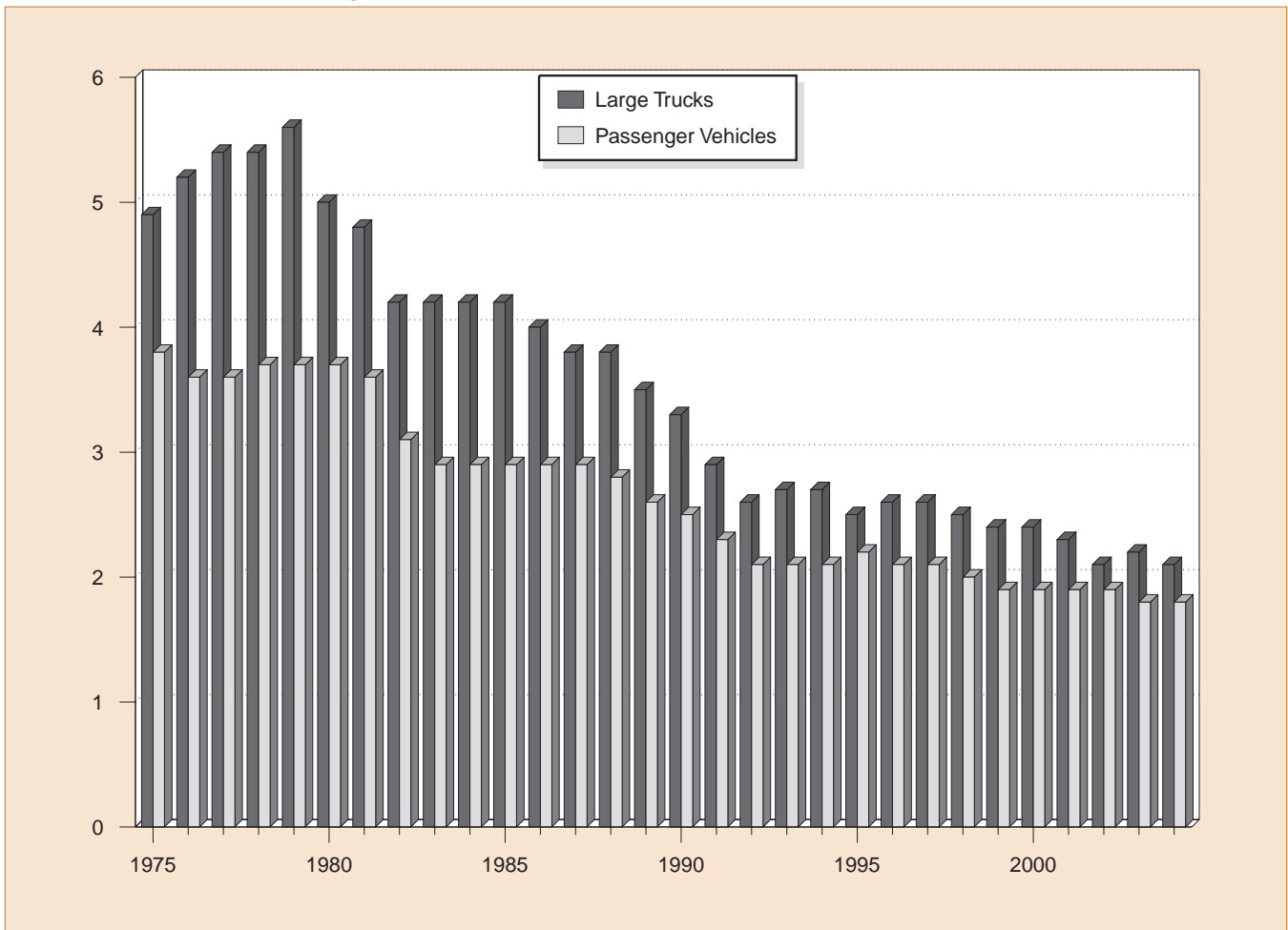
Table 2. Passenger Vehicle Fatal Crash Statistics, 1975-2004

Year	Fatal Crashes	Vehicles Involved	Occupant Fatalities	Total Fatalities	Million Vehicle Miles Traveled	Fatal Crashes per 100 Million Vehicle Miles Traveled	Vehicles Involved in Fatal Crashes per 100 Million Vehicle Miles Traveled	Fatalities per 100 Million Vehicle Miles Traveled	Passenger Vehicles Registered
1975	35,057	46,533	30,785	40,187	1,234,650	2.84	3.77	3.25	115,364,709
1976	35,242	46,506	31,604	40,724	1,304,049	2.70	3.57	3.12	119,806,386
1977	37,197	49,438	32,758	42,599	1,359,834	2.74	3.64	3.13	123,400,366
1978	39,226	52,442	34,898	44,870	1,425,922	2.75	3.68	3.15	129,141,048
1979	39,637	52,543	34,986	45,207	1,405,545	2.82	3.74	3.22	132,476,608
1980	39,623	51,739	34,935	45,139	1,402,531	2.83	3.69	3.22	134,831,752
1981	38,544	51,195	33,726	43,586	1,429,675	2.70	3.58	3.05	137,239,007
1982	34,619	45,651	29,689	39,262	1,467,854	2.36	3.11	2.67	139,244,282
1983	33,481	44,416	29,181	37,866	1,522,697	2.20	2.92	2.49	142,153,582
1984	34,979	46,621	30,116	39,382	1,585,049	2.21	2.94	2.48	147,435,149
1985	34,567	46,741	29,901	38,976	1,637,759	2.11	2.85	2.38	154,013,265
1986	36,612	49,522	32,261	41,373	1,694,082	2.16	2.92	2.44	157,031,560
1987	37,342	51,094	33,190	42,119	1,772,852	2.11	2.88	2.38	161,543,801
1988	38,252	52,263	34,114	43,069	1,872,478	2.04	2.79	2.30	166,118,639
1989	37,102	51,110	33,614	41,782	1,937,696	1.91	2.64	2.16	169,892,626
1990	36,281	49,705	32,693	40,879	1,982,837	1.83	2.51	2.06	173,193,097
1991	33,701	46,123	30,776	38,134	2,007,579	1.68	2.30	1.90	175,389,400
1992	32,109	44,465	29,485	36,323	2,078,432	1.54	2.14	1.75	174,182,793
1993	32,969	45,565	30,077	37,222	2,120,459	1.55	2.15	1.76	177,629,233
1994	33,390	46,626	30,901	37,742	2,170,723	1.54	2.15	1.74	181,482,575
1995	34,555	48,527	31,991	39,014	2,228,323	1.55	2.18	1.75	185,762,753
1996	34,792	48,973	32,438	39,265	2,286,394	1.52	2.14	1.72	190,051,664
1997	34,595	48,687	32,448	39,187	2,353,295	1.47	2.07	1.67	191,960,390
1998	34,274	48,403	31,899	38,539	2,417,852	1.42	2.00	1.59	195,749,209
1999	34,163	47,896	32,127	38,571	2,470,122	1.38	1.94	1.56	200,012,521
2000	34,379	48,300	32,225	38,695	2,523,346	1.36	1.91	1.53	203,913,482
2001	34,496	48,417	32,043	38,725	2,571,539	1.34	1.88	1.51	207,719,870
2002	35,123	49,042	32,843	39,514	2,624,508	1.34	1.87	1.51	211,992,662
2003	34,879	48,861	32,271	39,148	2,656,173	1.31	1.84	1.47	216,729,606
2004	34,314	47,844	31,693	38,531	2,719,324	1.26	1.76	1.42	223,213,958

Note: A passenger vehicle is defined as a car or light truck (including pickups, vans, and sport utility vehicles).

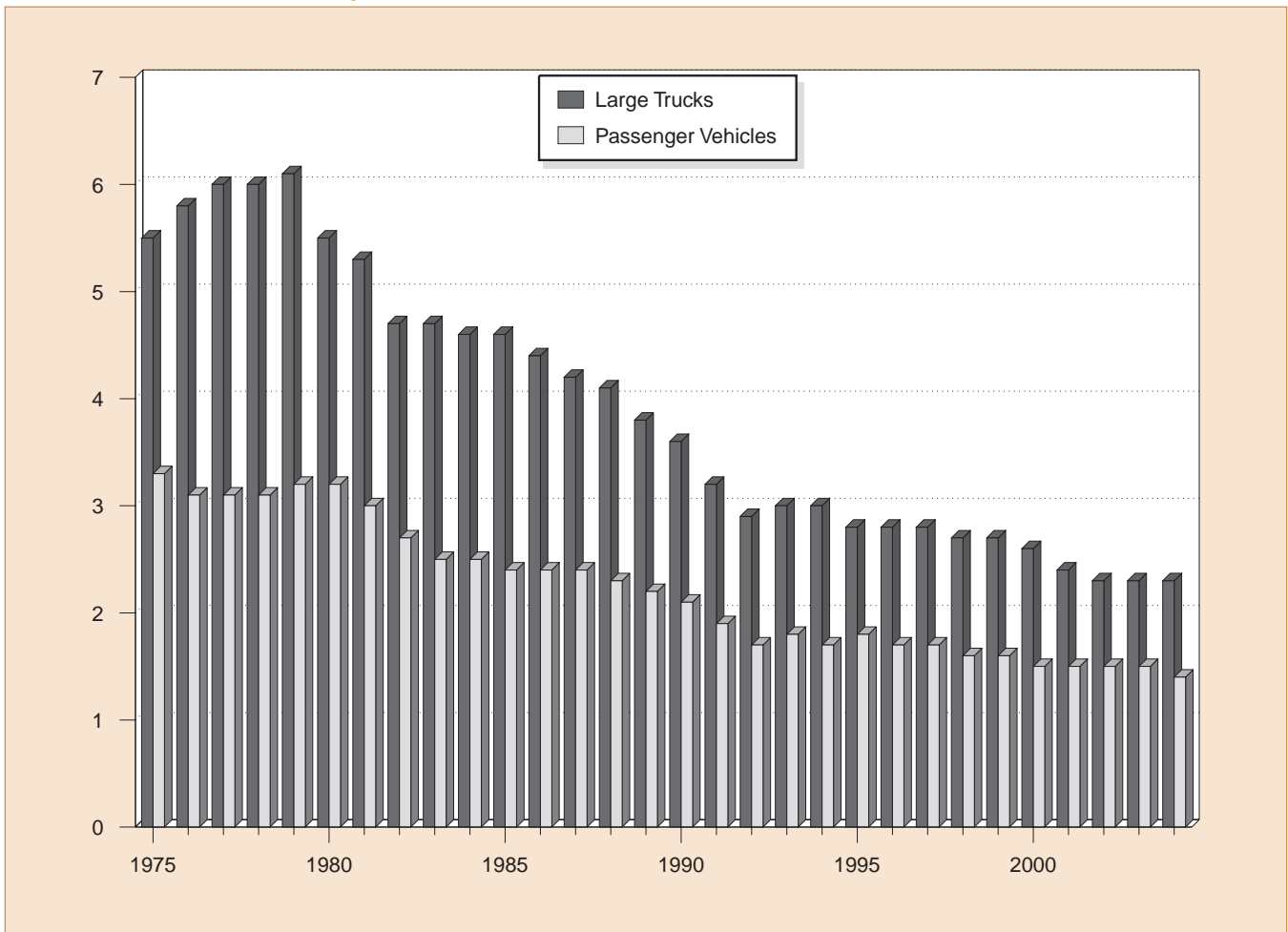
Sources: Vehicle Miles of Travel: Federal Highway Administration. Registered Vehicles: R.L. Polk & Co. Fatal Crashes, Vehicles Involved, and Fatalities: National Highway Traffic Safety Administration, Fatality Analysis Reporting System (FARS).

Figure 2. Large Trucks and Passenger Vehicles Involved in Fatal Crashes per 100 Million Vehicle Miles Traveled, 1975-2004



Notes: A large truck is defined as a truck with a gross vehicle weight rating (GVWR) greater than 10,000 pounds. A passenger vehicle is defined as a car or light truck (including pickups, vans, and sport utility vehicles). Sources: Vehicle Miles of Travel: Federal Highway Administration. Fatal Crashes and Vehicles Involved: National Highway Traffic Safety Administration, Fatality Analysis Reporting System (FARS).

Figure 3. Fatalities in Crashes Involving Large Trucks and Passenger Vehicles per 100 Million Vehicle Miles Traveled, 1975-2004



Notes: A large truck is defined as a truck with a gross vehicle weight rating (GVWR) greater than 10,000 pounds. A passenger vehicle is defined as a car or light truck (including pickups, vans, and sport utility vehicles).
 Sources: Vehicle Miles of Travel: Federal Highway Administration. Fatal Crashes and Vehicles Involved: National Highway Traffic Safety Administration, Fatality Analysis Reporting System (FARS).

Table 3. All Motor Vehicle Fatal Crash Statistics, 1975-2004

Year	Fatal Crashes	Vehicles Involved	Occupant Fatalities	Total Fatalities	Million Vehicle Miles Traveled	Fatal Crashes per 100 Million Vehicle Miles Traveled	Vehicles Involved in Fatal Crashes per 100 Million Vehicle Miles Traveled	Fatalities per 100 Million Vehicle Miles Traveled	Motor Vehicles Registered
1975	39,161	55,534	35,925	44,525	1,327,664	2.95	4.18	3.35	126,153,304
1976	39,747	56,084	37,102	45,523	1,402,380	2.83	4.00	3.25	130,793,242
1977	42,211	60,516	39,150	47,878	1,467,027	2.88	4.13	3.26	134,514,286
1978	44,433	64,144	41,533	50,331	1,544,704	2.88	4.15	3.26	140,374,064
1979	45,223	64,762	41,930	51,093	1,529,133	2.96	4.24	3.34	144,317,076
1980	45,284	63,485	41,927	51,091	1,527,295	2.96	4.16	3.35	146,845,134
1981	44,000	62,699	40,424	49,301	1,555,308	2.83	4.03	3.17	149,330,311
1982	39,092	56,455	35,646	43,945	1,595,010	2.45	3.54	2.76	151,147,755
1983	37,976	55,106	34,843	42,589	1,652,788	2.30	3.33	2.58	153,829,970
1984	39,631	57,972	36,284	44,257	1,720,269	2.30	3.37	2.57	158,899,717
1985	39,196	58,271	36,043	43,825	1,774,826	2.21	3.28	2.47	166,047,491
1986	41,090	60,792	38,234	46,087	1,834,872	2.24	3.31	2.51	168,545,286
1987	41,438	61,836	38,565	46,390	1,921,204	2.16	3.22	2.41	172,749,894
1988	42,130	62,703	39,170	47,087	2,025,962	2.08	3.09	2.32	177,455,476
1989	40,741	60,870	38,087	45,582	2,096,487	1.94	2.90	2.17	181,164,568
1990	39,836	59,292	37,134	44,599	2,144,362	1.86	2.77	2.08	184,275,422
1991	36,937	54,765	34,740	41,508	2,172,050	1.70	2.52	1.91	186,370,190
1992	34,942	52,227	32,880	39,250	2,247,151	1.55	2.32	1.75	184,937,848
1993	35,780	53,777	33,574	40,150	2,296,378	1.56	2.34	1.75	188,349,676
1994	36,254	54,911	34,318	40,716	2,357,588	1.54	2.33	1.73	192,497,438
1995	37,241	56,524	35,291	41,817	2,422,696	1.54	2.33	1.73	197,064,868
1996	37,494	57,347	35,696	42,065	2,485,848	1.51	2.31	1.69	201,630,659
1997	37,324	57,060	35,725	42,013	2,561,695	1.46	2.23	1.64	203,567,637
1998	37,107	56,922	35,382	41,501	2,631,522	1.41	2.16	1.58	208,076,469
1999	37,140	56,820	35,875	41,717	2,691,056	1.38	2.11	1.55	212,685,157
2000	37,526	57,594	36,348	41,945	2,746,925	1.37	2.10	1.53	217,028,324
2001	37,862	57,918	36,440	42,196	2,797,287	1.35	2.07	1.51	221,230,149
2002	38,491	58,426	37,375	43,005	2,855,508	1.35	2.05	1.51	225,684,815
2003	38,477	58,877	37,341	42,884	2,890,450	1.33	2.04	1.48	230,633,079
2004	38,253	58,414	37,142	42,636	2,962,513	1.29	1.97	1.44	237,961,465

Sources: Vehicle Miles of Travel: Federal Highway Administration. Registered Vehicles: Federal Highway Administration and R.L. Polk & Co. Fatal Crashes, Vehicles Involved, and Fatalities: National Highway Traffic Safety Administration, Fatality Analysis Reporting System (FARS).

Table 4. Large Truck Injury Crash Statistics, 1988-2004

Year	Injury Crashes	Vehicles Involved	Persons Injured	Million Vehicle Miles Traveled	Injury Crashes per 100 Million Vehicle Miles Traveled	Vehicles Involved in Injury Crashes per 100 Million Vehicle Miles Traveled	Persons Injured per 100 Million Vehicle Miles Traveled	Large Trucks Registered
1988	94,000	96,000	130,000	137,985	67.9	69.5	94.4	6,136,884
1989	106,000	110,000	156,000	142,749	74.6	77.2	109.0	6,226,481
1990	102,000	107,000	150,000	146,242	69.7	73.3	102.6	6,195,876
1991	75,000	78,000	110,000	149,543	50.2	52.2	73.9	6,172,146
1992	91,000	95,000	139,000	153,384	59.2	61.8	90.4	6,045,205
1993	93,000	97,000	133,000	159,888	57.9	60.4	83.2	6,088,155
1994	91,000	96,000	133,000	170,216	53.3	56.2	78.1	6,587,884
1995	80,000	84,000	117,000	178,156	44.7	46.9	65.7	6,719,420
1996	89,000	94,000	129,000	182,971	48.6	51.3	70.7	7,012,615
1997	92,000	96,000	131,000	191,477	48.0	49.9	68.3	7,083,326
1998	85,000	89,000	127,000	196,380	43.3	45.1	64.8	7,732,270
1999	95,000	101,000	142,000	202,688	46.9	49.6	69.9	7,791,426
2000	96,000	101,000	140,000	205,520	46.9	48.9	68.0	8,022,649
2001	86,000	90,000	131,000	209,032	41.0	43.0	62.5	7,857,675
2002	90,000	94,000	130,000	214,603	41.9	43.9	60.4	7,927,280
2003	85,000	89,000	122,000	217,917	38.8	40.7	56.0	7,756,888
2004	83,000	87,000	116,000	226,504	36.6	38.3	51.3	8,171,364

Notes: "Persons Injured" includes all nonfatally injured persons in injury and fatal crashes. A large truck is defined as a truck with a gross vehicle weight rating (GVWR) greater than 10,000 pounds.

Sources: Vehicle Miles of Travel and Registered Vehicles: Federal Highway Administration. Injury Crashes, Vehicles Involved, and Injuries: National Highway Traffic Safety Administration, General Estimates System (GES).

Table 5. Large Truck Property Damage Only (PDO) Crash Statistics, 1988-2004

Year	PDO Crashes	Vehicles Involved	Million Vehicle Miles Traveled	PDO Crashes per 100 Million Vehicle Miles Traveled	Vehicles Involved in PDO Crashes per 100 Million Vehicle Miles Traveled	Large Trucks Registered
1988	291,000	297,000	137,985	210.7	215.2	6,136,884
1989	291,000	300,000	142,749	203.8	210.5	6,226,481
1990	265,000	273,000	146,242	181.4	186.9	6,195,876
1991	240,000	248,000	149,543	160.2	166.0	6,172,146
1992	268,000	277,000	153,384	174.8	180.8	6,045,205
1993	287,000	296,000	159,888	179.2	185.1	6,088,155
1994	350,000	360,000	170,216	205.4	211.6	6,587,884
1995	279,000	289,000	178,156	156.7	162.4	6,719,420
1996	285,000	295,000	182,971	155.8	161.3	7,012,615
1997	325,000	337,000	191,477	169.6	176.1	7,083,326
1998	302,000	318,000	196,380	153.8	162.0	7,732,270
1999	353,000	369,000	202,688	174.1	182.2	7,791,426
2000	337,000	351,000	205,520	163.9	170.9	8,022,649
2001	319,000	335,000	209,032	152.8	160.2	7,857,675
2002	322,000	336,000	214,603	150.2	156.3	7,927,280
2003	347,000	363,000	217,917	159.3	166.6	7,756,888
2004	312,000	324,000	226,504	137.6	143.2	8,171,364

Note: A large truck is defined as a truck with a gross vehicle weight rating (GVWR) greater than 10,000 pounds.

Sources: Vehicle Miles of Travel and Registered Vehicles: Federal Highway Administration. PDO Crashes and Vehicles Involved: National Highway Traffic Safety Administration, General Estimates System (GES).

Table 6. Passenger Vehicle Injury Crash Statistics, 1988-2004

Year	Injury Crashes	Vehicles Involved	Persons Injured	Million Vehicle Miles Traveled	Injury Crashes per 100 Million Vehicle Miles Traveled	Vehicles Involved in Injury Crashes per 100 Million Vehicle Miles Traveled	Persons Injured per 100 Million Vehicle Miles Traveled	Passenger Vehicles Registered
1988	2,166,000	3,756,000	3,335,000	1,872,478	115.7	200.6	178.1	166,118,639
1989	2,093,000	3,619,000	3,211,000	1,937,696	108.0	186.7	165.7	169,892,626
1990	2,062,000	3,567,000	3,144,000	1,982,837	104.0	179.9	158.5	173,193,097
1991	1,953,000	3,404,000	3,027,000	2,007,579	97.3	169.5	150.8	175,389,400
1992	1,938,000	3,399,000	3,006,000	2,078,432	93.2	163.5	144.6	174,182,793
1993	1,970,000	3,474,000	3,087,000	2,120,459	92.9	163.8	145.6	177,629,233
1994	2,080,000	3,697,000	3,214,000	2,170,723	95.8	170.3	148.1	181,482,575
1995	2,170,000	3,938,000	3,410,000	2,228,323	97.4	176.7	153.0	185,762,753
1996	2,192,000	3,954,000	3,413,000	2,286,394	95.9	173.0	149.3	190,051,664
1997	2,104,000	3,801,000	3,295,000	2,353,295	89.4	161.5	140.0	191,960,390
1998	1,987,000	3,604,000	3,141,000	2,417,852	82.2	149.1	129.9	195,749,209
1999	2,005,000	3,603,000	3,175,000	2,470,122	81.2	145.9	128.5	200,012,521
2000	2,017,000	3,605,000	3,123,000	2,523,346	79.9	142.9	123.8	203,913,482
2001	1,954,000	3,496,000	2,974,000	2,571,539	76.0	136.0	115.7	207,719,870
2002	1,877,000	3,346,000	2,863,000	2,624,508	71.5	127.5	109.1	211,992,662
2003	1,873,000	3,362,000	2,828,000	2,656,173	70.5	126.6	106.5	216,729,606
2004	1,802,000	3,236,000	2,718,000	2,719,324	66.3	119.0	99.9	223,213,958

Notes: "Persons Injured" includes all nonfatally injured persons in injury and fatal crashes. A passenger vehicle is defined as a car or light truck (including pickups, vans, and sport utility vehicles).

Sources: Vehicle Miles of Travel: Federal Highway Administration. Registered Vehicles: R.L. Polk & Co. Injury Crashes, Vehicles Involved, and Injuries: National Highway Traffic Safety Administration, General Estimates System (GES).

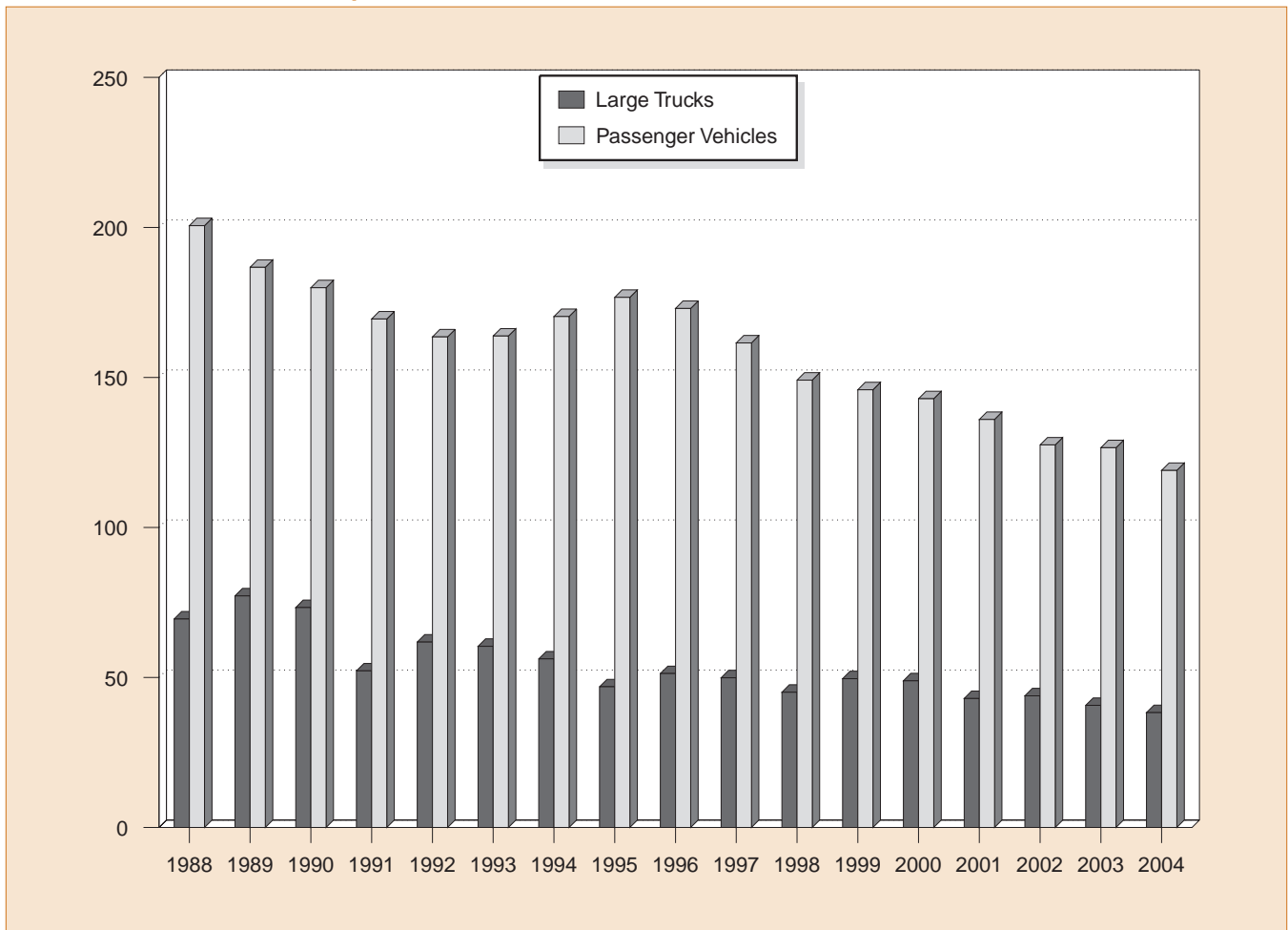
Table 7. Passenger Vehicle Property Damage Only (PDO) Crash Statistics, 1988-2004

Year	PDO Crashes	Vehicles Involved	Million Vehicle Miles Traveled	PDO Crashes per 100 Million Vehicle Miles Traveled	Vehicles Involved in PDO Crashes per 100 Million Vehicle Miles Traveled	Passenger Vehicles Registered
1988	4,506,000	7,592,000	1,872,478	240.6	405.5	166,118,639
1989	4,355,000	7,291,000	1,937,696	224.8	376.2	169,892,626
1990	4,207,000	7,140,000	1,982,837	212.2	360.1	173,193,097
1991	3,985,000	6,759,000	2,007,579	198.5	336.7	175,389,400
1992	3,872,000	6,556,000	2,078,432	186.3	315.4	174,182,793
1993	3,937,000	6,673,000	2,120,459	185.7	314.7	177,629,233
1994	4,205,000	7,149,000	2,170,723	193.7	329.3	181,482,575
1995	4,347,000	7,484,000	2,228,323	195.1	335.8	185,762,753
1996	4,403,000	7,555,000	2,286,394	192.6	330.4	190,051,664
1997	4,331,000	7,430,000	2,353,295	184.0	315.7	191,960,390
1998	4,168,000	7,211,000	2,417,852	172.4	298.2	195,749,209
1999	4,058,000	6,961,000	2,470,122	164.3	281.8	200,012,521
2000	4,151,000	7,088,000	2,523,346	164.5	280.9	203,913,482
2001	4,168,000	7,079,000	2,571,539	162.1	275.3	207,719,870
2002	4,228,000	7,199,000	2,624,508	161.1	274.3	211,992,662
2003	4,230,000	7,160,000	2,656,173	159.3	269.6	216,729,606
2004	4,170,000	7,102,000	2,719,324	153.3	261.2	223,213,958

Note: A passenger vehicle is defined as a car or light truck (including pickups, vans, and sport utility vehicles).

Sources: Vehicle Miles of Travel: Federal Highway Administration. Registered Vehicles: R.L. Polk & Co. PDO Crashes and Vehicles Involved: National Highway Traffic Safety Administration, General Estimates System (GES).

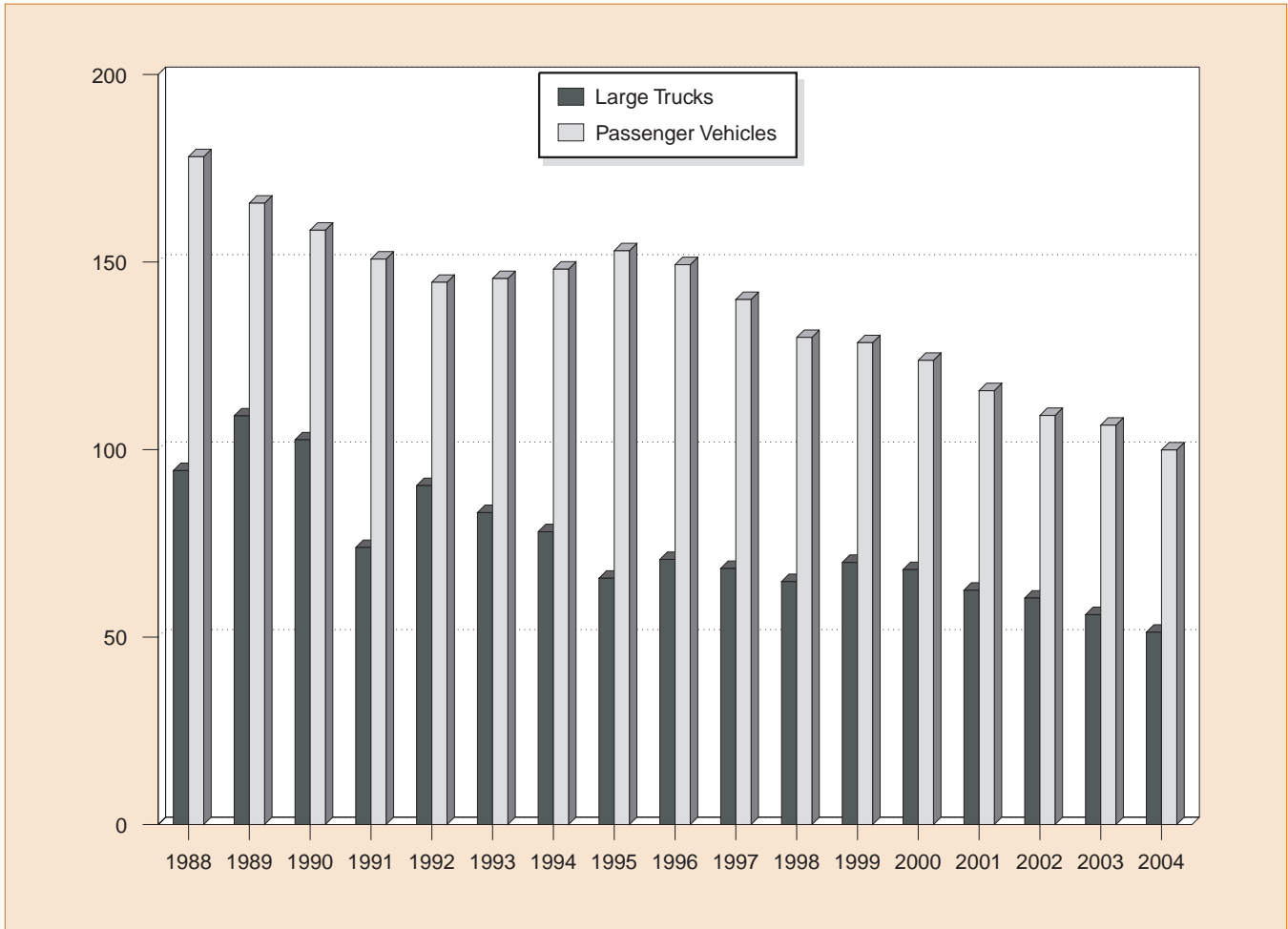
Figure 4. Large Trucks and Passenger Vehicles Involved in Injury Crashes per 100 Million Vehicle Miles Traveled, 1988-2004



Notes: A large truck is defined as a truck with a gross vehicle weight rating (GVWR) greater than 10,000 pounds. A passenger vehicle is defined as a car or light truck (including pickups, vans, and sport utility vehicles).

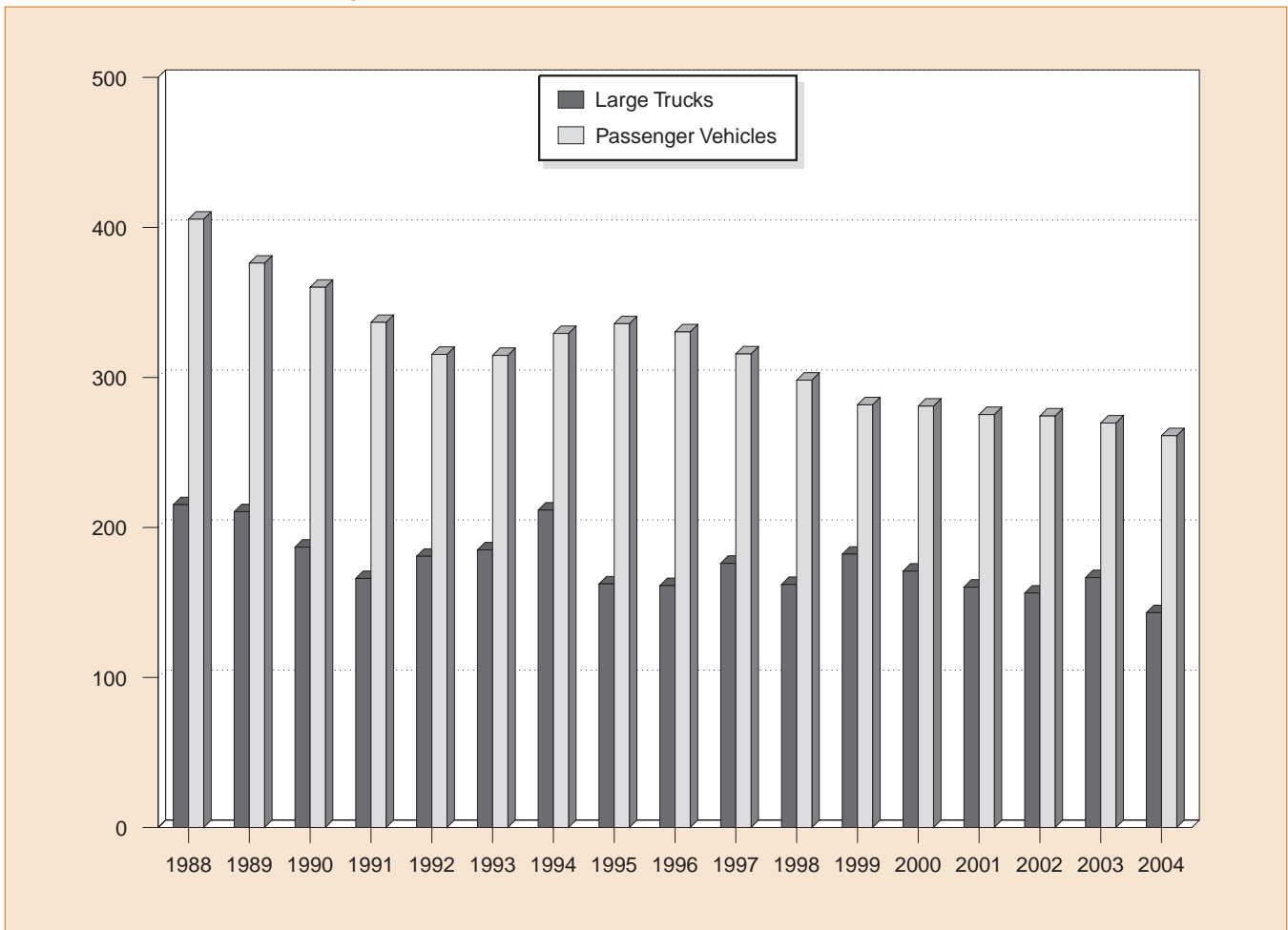
Sources: Vehicle Miles of Travel: Federal Highway Administration. Injury Crashes and Vehicles Involved: National Highway Traffic Safety Administration, General Estimates System (GES).

Figure 5. Persons Injured in Large Truck and Passenger Vehicle Crashes per 100 Million Vehicle Miles Traveled, 1988-2004



Notes: "Persons Injured" includes all nonfatally injured persons in injury and fatal crashes. A large truck is defined as a truck with a gross vehicle weight rating (GVWR) greater than 10,000 pounds. A passenger vehicle is defined as a car or light truck (including pickups, vans, and sport utility vehicles).
 Sources: Vehicle Miles of Travel: Federal Highway Administration. Injury Crashes and Vehicles Involved: National Highway Traffic Safety Administration, General Estimates System (GES).

Figure 6. Large Trucks and Passenger Vehicles Involved in Property Damage Only Crashes per 100 Million Vehicle Miles Traveled, 1988-2004



Notes: A large truck is defined as a truck with a gross vehicle weight rating (GVWR) greater than 10,000 pounds. A passenger vehicle is defined as a car or light truck (including pickups, vans, and sport utility vehicles).
 Sources: Vehicle Miles of Travel: Federal Highway Administration. PDO Crashes and Vehicles Involved: National Highway Traffic Safety Administration, General Estimates System (GES).

Table 8. All Motor Vehicle Injury Crash Statistics, 1988-2004

Year	Injury Crashes	Vehicles Involved	Persons Injured	Million Vehicle Miles Traveled	Injury Crashes per 100 Million Vehicle Miles Traveled	Vehicles Involved in Injury Crashes per 100 Million Vehicle Miles Traveled	Persons Injured per 100 Million Vehicle Miles Traveled	Motor Vehicles Registered
1988	2,233,000	3,973,000	3,416,000	2,025,962	110.2	196.1	168.6	177,455,476
1989	2,153,000	3,826,000	3,284,000	2,096,487	102.7	182.5	156.6	181,164,568
1990	2,122,000	3,775,000	3,231,000	2,144,362	99.0	176.0	150.7	184,275,422
1991	2,008,000	3,581,000	3,097,000	2,172,050	92.4	164.9	142.6	186,370,190
1992	1,991,000	3,587,000	3,070,000	2,247,151	88.6	159.6	136.6	184,937,848
1993	2,022,000	3,647,000	3,149,000	2,296,378	88.0	158.8	137.1	188,349,676
1994	2,123,000	3,865,000	3,266,000	2,357,588	90.1	163.9	138.5	192,497,438
1995	2,217,000	4,094,000	3,465,000	2,422,696	91.5	169.0	143.0	197,064,868
1996	2,238,000	4,120,000	3,468,000	2,485,848	90.0	165.7	139.5	201,630,659
1997	2,149,000	3,966,000	3,348,000	2,561,695	83.9	154.8	130.7	203,567,637
1998	2,029,000	3,757,000	3,192,000	2,631,522	77.1	142.8	121.3	208,076,469
1999	2,054,000	3,773,000	3,236,000	2,691,056	76.3	140.2	120.3	212,685,157
2000	2,070,000	3,783,000	3,189,000	2,746,925	75.4	137.7	116.1	217,028,324
2001	2,003,000	3,663,000	3,033,000	2,797,287	71.6	131.0	108.4	221,230,149
2002	1,929,000	3,520,000	2,926,000	2,855,756	67.5	123.2	102.5	225,684,815
2003	1,925,000	3,536,000	2,889,000	2,890,450	66.6	122.3	99.9	230,633,079
2004	1,862,000	3,415,000	2,788,000	2,962,513	62.8	115.3	94.1	237,961,465

Note: "Persons Injured" includes all nonfatally injured persons in injury and fatal crashes.

Sources: Vehicle Miles of Travel: Federal Highway Administration. Registered Vehicles: Federal Highway Administration and R.L. Polk & Co. Injury Crashes, Vehicles Involved, and Injuries: National Highway Traffic Safety Administration, General Estimates System (GES).

Table 9. All Motor Vehicle Property Damage Only (PDO) Crash Statistics, 1988-2004

Year	PDO Crashes	Vehicles Involved	Million Vehicle Miles Traveled	PDO Crashes per 100 Million Vehicle Miles Traveled	Vehicles Involved in PDO Crashes per 100 Million Vehicle Miles Traveled	Motor Vehicles Registered
1988	4,611,000	7,985,000	2,025,962	227.6	394.2	177,455,476
1989	4,459,000	7,678,000	2,096,487	212.7	366.2	181,164,568
1990	4,309,000	7,493,000	2,144,362	201.0	349.4	184,275,422
1991	4,073,000	7,086,000	2,172,050	187.5	326.2	186,370,190
1992	3,974,000	6,906,000	2,247,151	176.9	307.3	184,937,848
1993	4,048,000	7,040,000	2,296,378	176.3	306.6	188,349,676
1994	4,336,000	7,576,000	2,357,588	183.9	321.3	192,497,438
1995	4,446,000	7,844,000	2,422,696	183.5	323.8	197,064,868
1996	4,494,000	7,918,000	2,485,848	180.8	318.5	201,630,659
1997	4,438,000	7,830,000	2,561,695	173.2	305.6	203,567,637
1998	4,269,000	7,587,000	2,631,522	162.2	288.3	208,076,469
1999	4,188,000	7,402,000	2,691,056	155.6	275.1	212,685,157
2000	4,286,000	7,510,000	2,746,925	156.0	273.4	217,028,324
2001	4,282,000	7,480,000	2,797,287	153.1	267.4	221,230,149
2002	4,348,000	7,608,000	2,855,508	152.3	266.4	225,684,815
2003	4,365,000	7,594,000	2,890,450	151.0	262.7	230,633,079
2004	4,281,000	7,489,000	2,962,513	144.5	252.8	237,961,465

Sources: Vehicle Miles of Travel: Federal Highway Administration. Registered Vehicles: Federal Highway Administration and R.L. Polk & Co. PDO Crashes and Vehicles Involved: National Highway Traffic Safety Administration, General Estimates System (GES).

Table 10. Vehicle Occupants Killed in Large Truck Crashes by Vehicle Type, 1975-2004

Year	Passenger Car	Light Truck	Large Truck		Motorcycle	Bus	Other/ Unknown	Total
			Single-Vehicle Crashes	Multiple-Vehicle Crashes				
1975	2,353	522	643	318	156	8	67	4,067
1976	2,505	619	774	358	164	8	88	4,516
1977	2,903	756	884	403	180	8	73	5,207
1978	3,207	842	929	466	237	15	53	5,749
1979	3,320	976	967	465	248	10	61	6,047
1980	2,880	849	861	401	300	9	46	5,346
1981	2,927	889	785	348	259	11	40	5,259
1982	2,703	819	639	305	216	8	44	4,734
1983	2,859	805	676	306	204	26	47	4,923
1984	2,907	832	755	319	230	20	47	5,110
1985	3,020	881	634	343	243	25	58	5,204
1986	2,958	863	603	323	216	7	44	5,014
1987	2,961	957	571	281	223	15	38	5,046
1988	3,054	960	585	326	175	3	58	5,161
1989	2,913	1,024	550	308	133	28	44	5,000
1990	2,876	987	485	220	158	13	37	4,776
1991	2,535	986	448	213	133	9	42	4,366
1992	2,419	916	396	189	92	2	31	4,045
1993	2,615	1,077	389	216	116	5	42	4,460
1994	2,639	1,197	451	219	133	6	38	4,683
1995	2,546	1,153	425	223	108	9	30	4,494
1996	2,683	1,270	412	209	92	6	36	4,708
1997	2,674	1,426	499	224	85	10	28	4,946
1998	2,556	1,510	486	256	102	7	40	4,957
1999	2,524	1,493	480	279	118	12	33	4,939
2000	2,475	1,487	484	270	111	8	33	4,868
2001	2,269	1,539	474	234	113	13	28	4,670
2002	2,206	1,505	449	240	133	12	30	4,575
2003	2,206	1,515	457	269	151	11	36	4,645
2004	2,225	1,557	466	295	172	14	38	4,767

Notes: A passenger car is defined as a motor vehicle used primarily for carrying passengers, including convertibles, sedans, and station wagons. A light truck is defined as a truck with a gross vehicle weight rating (GVWR) of 10,000 pounds or less, including pickups, vans, truck-based station wagons, and sport utility vehicles. A large truck is defined as a truck with a gross vehicle weight rating (GVWR) greater than 10,000 pounds. A bus is defined as a large motor vehicle used to carry more than 10 passengers, including school buses, inter-city buses, and transit buses.

Source: National Highway Traffic Safety Administration, Fatality Analysis Reporting System (FARS).

Table 11. Nonmotorists and Vehicle Occupants Killed in Large Truck Crashes, 1975-2004

Year	Nonmotorists			Total	Vehicle Occupants	Total
	Pedestrian	Pedalcyclist	Other/Unknown			
1975	333	66	17	416	4,067	4,483
1976	400	79	13	492	4,516	5,008
1977	424	69	23	516	5,207	5,723
1978	516	64	27	607	5,749	6,356
1979	524	90	41	655	6,047	6,702
1980	523	73	29	625	5,346	5,971
1981	462	64	21	547	5,259	5,806
1982	418	61	16	495	4,734	5,229
1983	463	83	22	568	4,923	5,491
1984	425	80	25	530	5,110	5,640
1985	447	64	19	530	5,204	5,734
1986	452	78	35	565	5,014	5,579
1987	427	90	35	552	5,046	5,598
1988	430	59	29	518	5,161	5,679
1989	399	71	20	490	5,000	5,490
1990	414	58	24	496	4,776	5,272
1991	363	75	17	455	4,366	4,821
1992	341	60	16	417	4,045	4,462
1993	303	57	36	396	4,460	4,856
1994	351	86	24	461	4,683	5,144
1995	329	74	21	424	4,494	4,918
1996	331	59	44	434	4,708	5,142
1997	352	75	25	452	4,946	5,398
1998	353	58	27	438	4,957	5,395
1999	344	66	31	441	4,939	5,380
2000	328	63	23	414	4,868	5,282
2001	352	69	20	441	4,670	5,111
2002	278	67	19	364	4,575	4,939
2003	320	52	19	391	4,645	5,036
2004	329	77	17	423	4,767	5,190

Note: A large truck is defined as a truck with a gross vehicle weight rating (GVWR) greater than 10,000 pounds.
 Source: National Highway Traffic Safety Administration, Fatality Analysis Reporting System (FARS).

Table 12. Drivers in Fatal Crashes by Vehicle Type and Blood Alcohol Concentration, 1982-2004

Year	Large Truck			Passenger Car		
	Total Drivers	BAC=0.01+	BAC=0.08+	Total Drivers	BAC=0.01+	BAC=0.08+
1982	4,582	10.2%	6.2%	34,121	41.9%	36.2%
1983	4,790	9.5%	6.7%	33,069	40.3%	35.2%
1984	5,056	9.3%	6.7%	34,395	38.7%	32.9%
1985	5,091	6.8%	5.0%	34,071	35.8%	30.1%
1986	5,015	7.0%	4.8%	35,959	36.4%	30.2%
1987	5,046	4.9%	3.5%	36,371	34.8%	29.2%
1988	5,141	5.5%	3.7%	36,769	33.8%	28.4%
1989	4,903	4.4%	2.8%	35,204	32.2%	27.3%
1990	4,709	4.7%	2.8%	33,893	34.2%	28.9%
1991	4,291	4.4%	2.6%	31,102	31.5%	26.8%
1992	3,980	3.3%	1.9%	29,670	30.4%	25.5%
1993	4,271	3.9%	2.3%	30,060	28.5%	23.8%
1994	4,592	3.2%	2.1%	30,103	28.1%	23.8%
1995	4,410	3.6%	2.3%	30,773	26.9%	22.6%
1996	4,688	3.1%	2.1%	30,451	27.2%	22.7%
1997	4,859	2.7%	1.7%	29,896	25.6%	21.6%
1998	4,905	2.5%	1.5%	28,907	25.6%	21.3%
1999	4,868	2.5%	1.5%	27,878	25.2%	21.3%
2000	4,948	2.8%	1.5%	27,661	28.1%	23.6%
2001	4,779	2.5%	1.2%	27,444	27.0%	22.7%
2002	4,550	2.5%	1.7%	27,236	26.6%	22.4%
2003	4,658	2.1%	1.4%	26,422	26.1%	22.0%
2004	4,799	2.1%	1.1%	25,393	26.0%	22.0%

Year	Light Truck			Motorcycle		
	Total Drivers	BAC=0.01+	BAC=0.08+	Total Drivers	BAC=0.01+	BAC=0.08+
1982	11,199	44.4%	39.2%	4,490	55.4%	46.7%
1983	11,017	43.4%	39.0%	4,288	57.3%	47.8%
1984	11,866	40.6%	35.1%	4,650	54.7%	46.1%
1985	12,372	36.6%	31.9%	4,598	53.3%	43.2%
1986	13,208	38.4%	32.9%	4,558	55.5%	45.9%
1987	14,407	37.0%	31.5%	4,061	51.4%	42.7%
1988	15,167	36.6%	31.5%	3,704	50.6%	41.7%
1989	15,579	34.7%	30.4%	3,182	52.9%	44.6%
1990	15,501	35.9%	31.1%	3,269	52.4%	43.2%
1991	14,702	35.2%	30.5%	2,816	52.1%	43.5%
1992	14,540	48.7%	40.0%	2,435	32.7%	28.4%
1993	15,207	30.8%	26.8%	2,471	45.3%	37.7%
1994	16,235	29.3%	25.2%	2,330	40.9%	33.0%
1995	17,483	28.7%	24.6%	2,262	41.6%	33.0%
1996	18,057	27.7%	24.0%	2,172	43.5%	35.3%
1997	18,502	26.3%	22.6%	2,159	40.8%	32.4%
1998	19,247	26.2%	22.2%	2,333	41.1%	34.4%
1999	19,865	26.4%	22.3%	2,528	40.1%	32.8%
2000	20,393	26.0%	22.2%	2,971	40.0%	31.8%
2001	20,704	26.7%	22.7%	3,261	36.9%	29.2%
2002	21,562	26.8%	23.1%	3,363	38.7%	30.9%
2003	22,172	25.3%	21.5%	3,800	36.3%	29.1%
2004	22,217	25.0%	21.5%	4,095	33.7%	27.3%

Notes: Blood alcohol concentration (BAC) of 0.01 grams per deciliter (g/dL) or above (BAC=0.01+) indicates driver alcohol involvement. BAC of 0.08 g/dL or greater (BAC=0.08+) indicates driver intoxication. A large truck is defined as a truck with a gross vehicle weight rating (GVWR) greater than 10,000 pounds. A passenger car is defined as a motor vehicle used primarily for carrying passengers, including convertibles, sedans, and station wagons. A light truck is defined as a truck with a gross vehicle weight rating (GVWR) of 10,000 pounds or less, including pickups, vans, truck-based station wagons, and sport utility vehicles.

Source: National Highway Traffic Safety Administration, Fatality Analysis Reporting System (FARS).

Table 13. Combination Truck Fatal Crash Statistics, 1975-2004

Year	Fatal Crashes	Vehicles Involved	Occupant Fatalities	Total Fatalities	Million Vehicle Miles Traveled	Fatal Crashes per 100 Million Vehicle Miles Traveled	Vehicles Involved in Fatal Crashes per 100 Million Vehicle Miles Traveled	Fatalities per 100 Million Vehicle Miles Traveled	Combination Trucks Registered
1975	2,825	3,006	696	3,452	46,724	6.05	6.43	7.39	1,130,747
1976	3,260	3,439	838	3,948	49,680	6.56	6.92	7.95	1,224,917
1977	3,613	3,830	932	4,305	55,682	6.49	6.88	7.73	1,239,613
1978	4,066	4,305	1,001	4,825	62,992	6.45	6.83	7.66	1,341,707
1979	4,307	4,574	1,041	5,148	66,992	6.43	6.83	7.68	1,386,374
1980	3,731	3,957	904	4,473	68,678	5.43	5.76	6.51	1,416,869
1981	3,863	4,070	850	4,594	69,134	5.59	5.89	6.65	1,261,202
1982	3,519	3,708	744	4,226	70,765	4.97	5.24	5.97	1,265,321
1983	3,645	3,839	756	4,365	73,586	4.95	5.22	5.93	1,304,041
1984	3,907	4,122	872	4,605	77,377	5.05	5.33	5.95	1,340,144
1985	3,892	4,124	772	4,655	78,063	4.99	5.28	5.96	1,403,266
1986	3,825	4,060	718	4,493	81,038	4.72	5.01	5.54	1,407,783
1987	3,746	3,971	675	4,403	85,495	4.38	4.64	5.15	1,529,824
1988	3,939	4,212	731	4,609	88,551	4.45	4.76	5.20	1,667,327
1989	3,680	3,909	671	4,372	91,879	4.01	4.25	4.76	1,707,182
1990	3,583	3,780	520	4,217	94,341	3.80	4.01	4.47	1,708,895
1991	3,071	3,266	493	3,635	96,645	3.18	3.38	3.76	1,691,331
1992	2,881	3,033	429	3,376	99,510	2.90	3.05	3.39	1,675,363
1993	3,092	3,261	446	3,699	103,116	3.00	3.16	3.59	1,680,305
1994	3,248	3,432	477	3,860	108,932	2.98	3.15	3.54	1,681,500
1995	3,129	3,319	472	3,723	115,451	2.71	2.87	3.22	1,695,751
1996	3,325	3,570	448	3,921	118,899	2.80	3.00	3.30	1,746,586
1997	3,491	3,711	512	4,122	124,584	2.80	2.98	3.31	1,789,968
1998	3,465	3,747	531	4,143	128,359	2.70	2.92	3.23	1,997,345
1999	3,442	3,713	574	4,121	132,384	2.60	2.80	3.11	2,028,562
2000	3,466	3,771	541	4,052	135,020	2.57	2.79	3.00	2,096,619
2001	3,298	3,553	503	3,838	136,584	2.41	2.60	2.81	2,154,174
2002	3,207	3,487	508	3,830	138,737	2.31	2.51	2.76	2,276,661
2003	3,239	3,523	524	3,799	140,160	2.31	2.51	2.71	1,908,365
2004	3,310	3,619	532	3,924	145,398	2.28	2.49	2.70	2,010,335

Note: A combination truck is defined as a truck tractor pulling any number of trailers (including a "bobtail" truck tractor not pulling any trailers) or a straight truck pulling at least one trailer.

Sources: Vehicle Miles of Travel and Registered Vehicles: Federal Highway Administration. Fatal Crashes, Vehicles Involved, and Fatalities: National Highway Traffic Safety Administration, Fatality Analysis Reporting System (FARS).

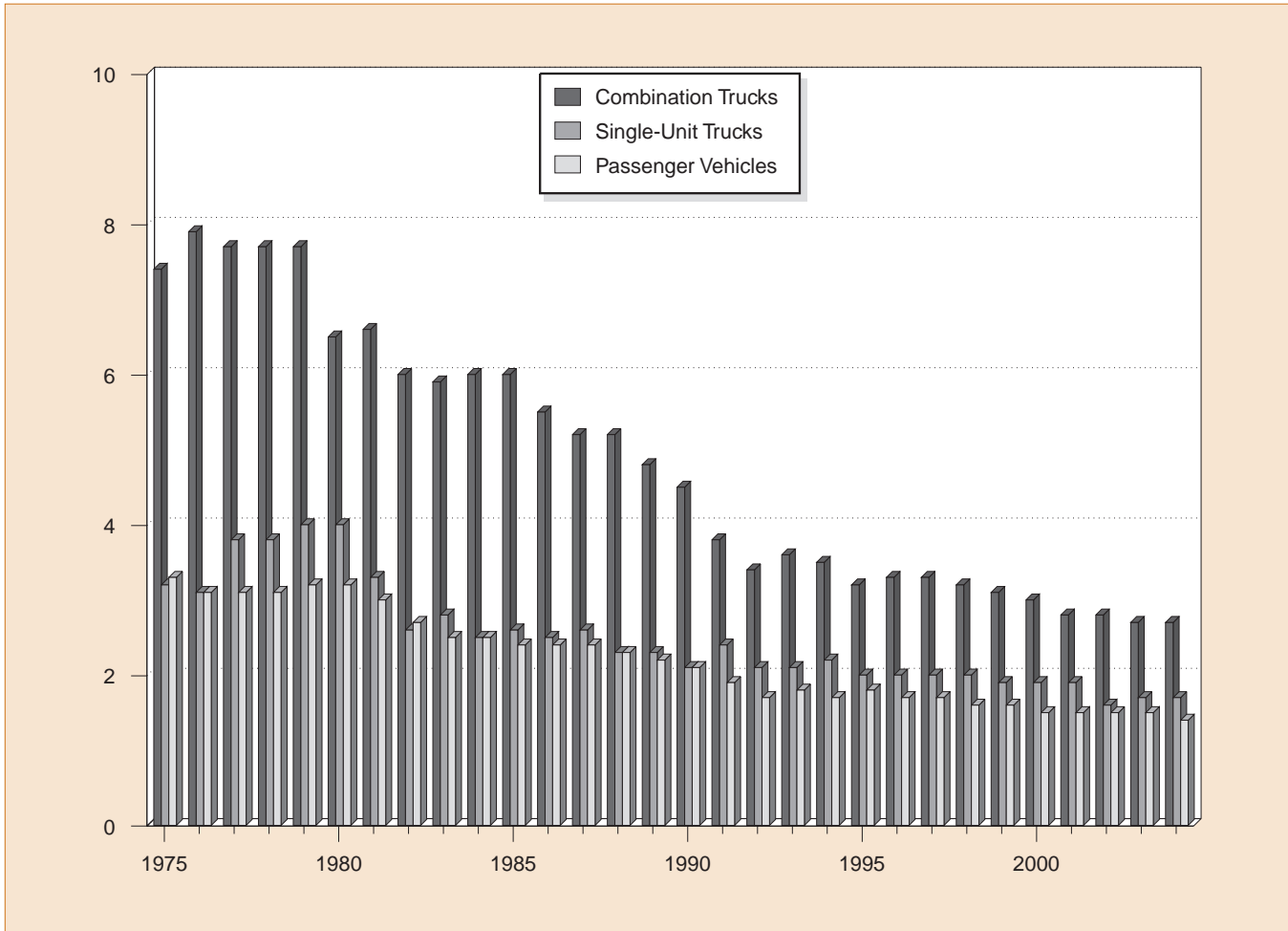
Table 14. Single-Unit Truck Fatal Crash Statistics, 1975-2004

Year	Fatal Crashes	Vehicles Involved	Occupant Fatalities	Total Fatalities	Million Vehicle Miles Traveled	Fatal Crashes per 100 Million Vehicle Miles Traveled	Vehicles Involved in Fatal Crashes per 100 Million Vehicle Miles Traveled	Fatalities per 100 Million Vehicle Miles Traveled	Single-Unit Trucks Registered
1975	948	971	265	1,094	34,606	2.74	2.81	3.16	4,231,622
1976	978	996	294	1,125	36,390	2.69	2.74	3.09	4,350,268
1977	1,306	1,334	355	1,502	39,339	3.32	3.39	3.82	4,450,290
1978	1,419	1,454	394	1,630	42,747	3.32	3.40	3.81	4,518,100
1979	1,472	1,510	391	1,670	42,012	3.50	3.59	3.98	4,505,197
1980	1,388	1,422	358	1,590	39,813	3.49	3.57	3.99	4,373,784
1981	1,130	1,160	283	1,298	39,568	2.86	2.93	3.28	4,455,076
1982	922	938	200	1,056	40,658	2.27	2.31	2.60	4,325,094
1983	1,019	1,038	226	1,182	42,546	2.40	2.44	2.78	4,204,351
1984	986	1,002	202	1,114	44,419	2.22	2.26	2.51	4,060,931
1985	1,016	1,029	205	1,163	45,441	2.24	2.26	2.56	4,593,071
1986	1,018	1,037	208	1,158	45,637	2.23	2.27	2.54	4,313,097
1987	1,118	1,137	177	1,259	48,022	2.33	2.37	2.62	4,188,442
1988	1,014	1,029	180	1,143	49,434	2.05	2.08	2.31	4,469,557
1989	1,056	1,075	187	1,192	50,870	2.08	2.11	2.34	4,519,300
1990	979	996	185	1,106	51,901	1.89	1.92	2.13	4,486,981
1991	1,072	1,081	168	1,251	52,898	2.03	2.04	2.36	4,480,815
1992	987	1,002	156	1,137	53,874	1.83	1.86	2.11	4,369,842
1993	1,054	1,067	159	1,214	56,772	1.86	1.88	2.14	4,407,850
1994	1,188	1,212	193	1,354	61,284	1.94	1.98	2.21	4,906,385
1995	1,133	1,153	176	1,275	62,705	1.81	1.84	2.03	5,023,669
1996	1,160	1,185	173	1,313	64,072	1.81	1.85	2.05	5,266,029
1997	1,194	1,206	211	1,369	66,893	1.78	1.80	2.05	5,293,358
1998	1,185	1,208	211	1,331	68,021	1.74	1.78	1.96	5,734,925
1999	1,193	1,207	185	1,352	70,304	1.70	1.72	1.92	5,763,864
2000	1,199	1,224	213	1,350	70,500	1.70	1.74	1.91	5,926,030
2001	1,247	1,270	205	1,382	72,448	1.72	1.75	1.91	5,703,501
2002	1,089	1,100	181	1,210	75,866	1.44	1.45	1.59	5,650,619
2003	1,174	1,198	202	1,330	77,757	1.51	1.54	1.71	5,848,523
2004	1,211	1,241	229	1,369	81,107	1.49	1.53	1.69	6,161,028

Note: A single-unit truck is defined as a medium or heavy truck in which the engine, cab, drive train, and cargo area are all on one chassis.

Sources: Vehicle Miles of Travel and Registered Vehicles: Federal Highway Administration. Fatal Crashes, Vehicles Involved, and Fatalities: National Highway Traffic Safety Administration, Fatality Analysis Reporting System (FARS).

Figure 7. Fatalities in Combination Truck, Single-Unit Truck, and Passenger Vehicle Crashes per 100 Million Vehicle Miles Traveled, 1975-2004



Notes: A combination truck is defined as a truck tractor pulling any number of trailers (including none) or a straight truck pulling at least one trailer. A single-unit truck is defined as a medium or heavy truck in which the engine, cab, drive train, and cargo area are all on one chassis. A passenger vehicle is defined as a car or light truck (including pickups, vans, and sport utility vehicles).

Sources: Vehicle Miles of Travel: Federal Highway Administration. Fatal Crashes, Vehicles Involved, and Fatalities: National Highway Traffic Safety Administration, Fatality Analysis Reporting System (FARS).

Table 15. Combination Truck Injury Crash Statistics, 1988-2004

Year	Injury Crashes	Vehicles Involved	Persons Injured	Million Vehicle Miles Traveled	Injury Crashes per 100 Million Vehicle Miles Traveled	Vehicles Involved in Injury Crashes per 100 Million Vehicle Miles Traveled	Persons Injured per 100 Million Vehicle Miles Traveled	Combination Trucks Registered
1988	54,000	55,000	76,000	88,551	60.8	62.0	86.2	1,667,327
1989	61,000	64,000	87,000	91,879	66.9	69.4	94.4	1,707,182
1990	59,000	61,000	85,000	94,341	62.1	64.4	90.3	1,708,895
1991	42,000	44,000	63,000	96,645	43.7	45.5	65.2	1,691,331
1992	46,000	47,000	72,000	99,510	46.4	47.5	72.0	1,675,363
1993	54,000	56,000	77,000	103,116	52.7	54.5	74.8	1,680,305
1994	58,000	60,000	82,000	108,932	52.8	55.4	75.5	1,681,500
1995	48,000	50,000	67,000	115,451	41.6	43.5	58.4	1,695,751
1996	55,000	57,000	78,000	118,899	45.9	48.1	65.5	1,746,586
1997	51,000	53,000	72,000	124,584	40.7	42.4	58.1	1,789,968
1998	49,000	51,000	75,000	128,359	37.9	39.4	58.3	1,997,345
1999	54,000	57,000	79,000	132,384	40.5	43.0	59.8	2,028,562
2000	50,000	52,000	73,000	135,020	37.2	38.7	53.9	2,096,619
2001	46,000	49,000	71,000	136,584	34.0	35.6	51.8	2,154,174
2002	48,000	50,000	72,000	138,737	34.8	36.2	51.6	2,276,661
2003	46,000	49,000	65,000	140,160	32.8	34.6	46.7	1,908,365
2004	46,000	47,000	64,000	145,398	31.3	32.6	43.9	2,010,335

Notes: "Persons Injured" includes all nonfatally injured persons in injury and fatal crashes. A combination truck is defined as a truck tractor pulling any number of trailers (including none) or a straight truck pulling at least one trailer.

Sources: Vehicle Miles of Travel and Registered Vehicles: Federal Highway Administration. Injury Crashes, Vehicles Involved, and Injuries: National Highway Traffic Safety Administration, General Estimates System (GES).

Table 16. Combination Truck Property Damage Only (PDO) Crash Statistics, 1988-2004

Year	PDO Crashes	Vehicles Involved	Million Vehicle Miles Traveled	PDO Crashes per 100 Million Vehicle Miles Traveled	Vehicles Involved in PDO Crashes per 100 Million Vehicle Miles Traveled	Combination Trucks Registered
1988	182,000	186,000	88,551	206.0	209.5	1,667,327
1989	180,000	185,000	91,879	195.9	201.7	1,707,182
1990	161,000	166,000	94,341	170.9	175.6	1,708,895
1991	146,000	152,000	96,645	150.8	157.0	1,691,331
1992	129,000	134,000	99,510	129.5	134.3	1,675,363
1993	180,000	186,000	103,116	174.6	180.5	1,680,305
1994	217,000	223,000	108,932	199.4	204.8	1,681,500
1995	174,000	179,000	115,451	150.9	155.2	1,695,751
1996	168,000	173,000	118,899	141.0	145.8	1,746,586
1997	188,000	197,000	124,584	151.0	157.9	1,789,968
1998	170,000	178,000	128,359	132.3	138.9	1,997,345
1999	176,000	184,000	132,384	132.8	138.9	2,028,562
2000	171,000	179,000	135,020	126.8	132.2	2,096,619
2001	159,000	166,000	136,584	116.1	121.6	2,154,174
2002	153,000	159,000	138,737	110.1	114.9	2,276,661
2003	163,000	172,000	140,160	116.2	122.6	1,908,365
2004	161,000	168,000	145,398	110.9	115.5	2,010,335

Note: A combination truck is defined as a truck tractor pulling any number of trailers (including none) or a straight truck pulling at least one trailer.

Sources: Vehicle Miles of Travel and Registered Vehicles: Federal Highway Administration. PDO Crashes and Vehicles Involved: National Highway Traffic Safety Administration, General Estimates System (GES).

Table 17. Single-Unit Truck Injury Crash Statistics, 1988-2004

Year	Injury Crashes	Vehicles Involved	Persons Injured	Million Vehicle Miles Traveled	Injury Crashes per 100 Million Vehicle Miles Traveled	Vehicles Involved in Injury Crashes per 100 Million Vehicle Miles Traveled	Persons Injured per 100 Million Vehicle Miles Traveled	Single-Unit Trucks Registered
1988	41,000	41,000	55,000	49,434	82.3	82.8	111.2	4,469,557
1989	46,000	46,000	70,000	50,870	89.8	91.3	137.9	4,519,300
1990	45,000	46,000	70,000	51,901	86.2	89.4	135.0	4,486,981
1991	33,000	34,000	48,000	52,898	63.0	64.3	91.4	4,480,815
1992	46,000	48,000	69,000	53,874	85.2	88.2	128.5	4,369,842
1993	39,000	40,000	57,000	56,772	69.0	71.0	100.8	4,407,850
1994	34,000	35,000	52,000	61,284	56.1	57.6	85.6	4,906,385
1995	32,000	33,000	51,000	62,705	51.5	53.2	80.9	5,023,669
1996	36,000	37,000	54,000	64,072	56.0	57.3	84.0	5,266,029
1997	42,000	43,000	60,000	66,893	63.2	63.9	89.6	5,293,358
1998	38,000	38,000	54,000	68,021	55.2	56.0	79.4	5,734,925
1999	43,000	44,000	65,000	70,304	60.8	62.2	92.3	5,763,864
2000	48,000	48,000	70,000	70,500	67.5	68.4	98.6	5,926,030
2001	41,000	41,000	62,000	72,448	56.1	56.9	85.6	5,703,501
2002	43,000	44,000	61,000	75,866	57.1	58.0	80.7	5,650,619
2003	40,000	40,000	59,000	77,757	50.9	51.8	76.1	5,848,523
2004	39,000	39,000	54,000	81,107	47.6	48.6	66.8	6,161,028

Notes: "Persons Injured" includes all nonfatally injured persons in injury and fatal crashes. A single-unit truck is defined as a medium or heavy truck in which the engine, cab, drive train, and cargo area are all on one chassis.

Sources: Vehicle Miles of Travel and Registered Vehicles: Federal Highway Administration. Injury Crashes, Vehicles Involved, and Injuries: National Highway Traffic Safety Administration, General Estimates System (GES).

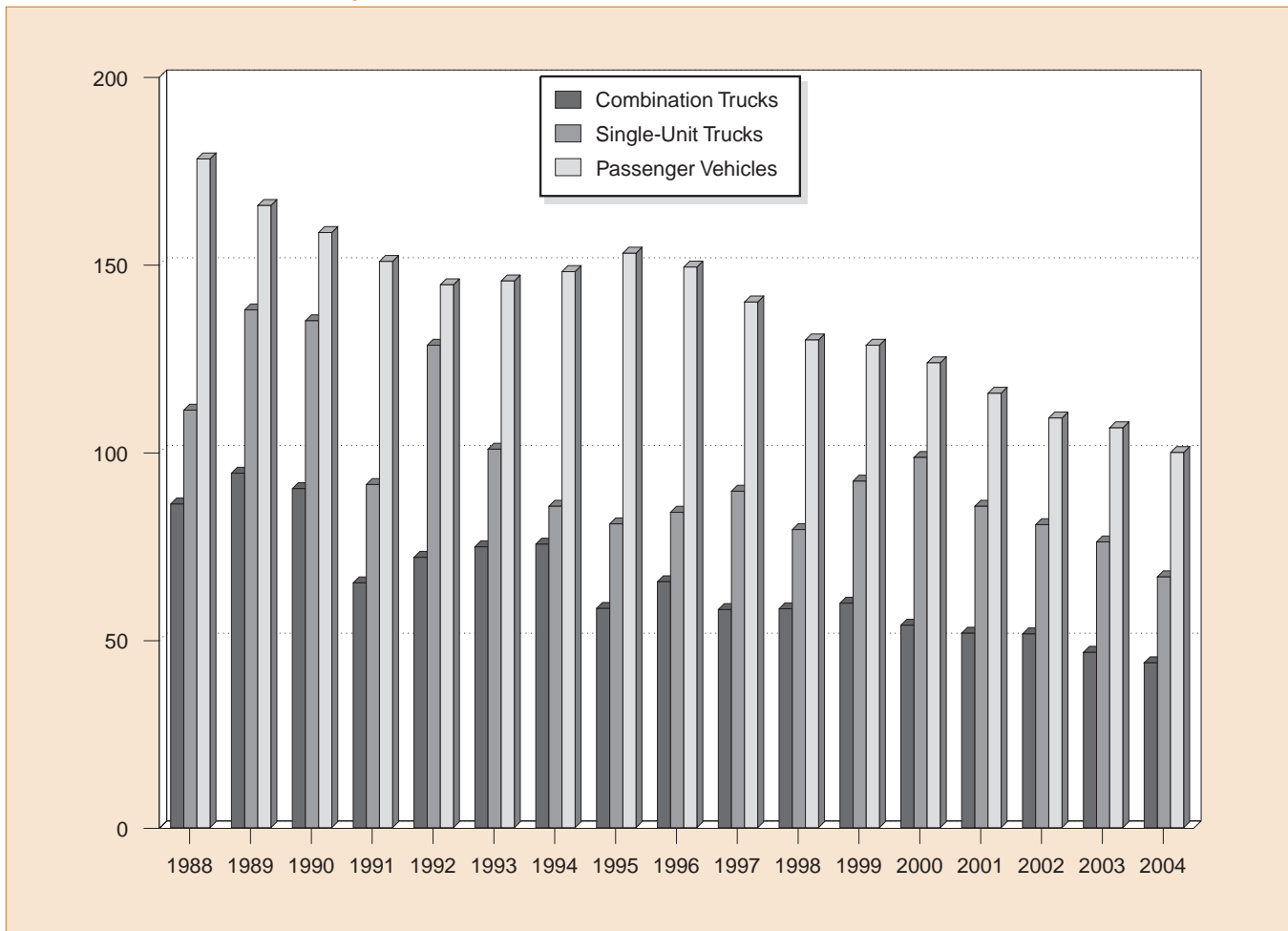
Table 18. Single-Unit Truck Property Damage Only (PDO) Crash Statistics, 1988-2004

Year	PDO Crashes	Vehicles Involved	Million Vehicle Miles Traveled	PDO Crashes per 100 Million Vehicle Miles Traveled	Vehicles Involved in PDO Crashes per 100 Million Vehicle Miles Traveled	Single-Unit Trucks Registered
1988	110,000	111,000	49,434	222.4	225.5	4,469,557
1989	113,000	115,000	50,870	222.7	226.3	4,519,300
1990	106,000	108,000	51,901	204.0	207.5	4,486,981
1991	96,000	97,000	52,898	181.1	182.5	4,480,815
1992	141,000	144,000	53,874	262.2	266.5	4,369,842
1993	109,000	110,000	56,772	191.3	193.4	4,407,850
1994	135,000	137,000	61,284	220.9	223.6	4,906,385
1995	108,000	110,000	62,705	171.9	175.8	5,023,669
1996	120,000	122,000	64,072	187.7	190.1	5,266,029
1997	140,000	141,000	66,893	208.6	210.1	5,293,358
1998	138,000	140,000	68,021	202.5	205.5	5,734,925
1999	181,000	185,000	70,304	257.3	263.6	5,763,864
2000	171,000	173,000	70,500	242.8	244.9	5,926,030
2001	167,000	169,000	72,448	230.4	233.0	5,703,501
2002	173,000	176,000	75,866	228.0	232.1	5,650,619
2003	189,000	191,000	77,757	242.5	246.0	5,848,523
2004	154,000	156,000	81,107	189.6	192.8	6,161,028

Note: A single-unit truck is defined as a medium or heavy truck in which the engine, cab, drive train, and cargo area are all on one chassis.

Sources: Vehicle Miles of Travel and Registered Vehicles: Federal Highway Administration. PDO Crashes and Vehicles Involved: National Highway Traffic Safety Administration, General Estimates System (GES).

Figure 8. Persons Injured in Combination Truck, Single-Unit Truck, and Passenger Vehicle Crashes per 100 Million Vehicle Miles Traveled, 1988-2004



Notes: "Persons Injured" includes all nonfatally injured persons in injury and fatal crashes. A combination truck is defined as a truck tractor pulling any number of trailers (including none) or a straight truck pulling at least one trailer. A single-unit truck is defined as a medium or heavy truck in which the engine, cab, drive train, and cargo area are all on one chassis. A passenger vehicle is defined as a car or light truck (including pickups, vans, and sport utility vehicles).
 Sources: Vehicle Miles of Travel: Federal Highway Administration. Injury Crashes, Vehicles Involved, and Injuries: National Highway Traffic Safety Administration, General Estimates System (GES).

Table 19. Large Truck and Passenger Vehicle Fatal Crashes per 100 Million Vehicle Miles Traveled by Roadway Function Class, 1981-2004

Year	Rural						Urban				Total	
	Interstate		Non-Interstate Principal Arterial		Other		Interstate		Other			
	Large Trucks	Passenger Vehicles	Large Trucks	Passenger Vehicles	Large Trucks	Passenger Vehicles	Large Trucks	Passenger Vehicles	Large Trucks	Passenger Vehicles	Large Trucks	Passenger Vehicles
1981	2.3	1.4	5.3	2.4	7.9	5.3	2.7	1.1	4.5	2.2	4.5	2.7
1982	1.9	1.3	4.5	1.8	8.2	5.2	2.2	0.9	3.8	1.9	4.0	2.3
1983	2.1	1.3	4.1	1.6	8.3	5.0	2.5	0.8	4.0	1.8	4.0	2.2
1984	2.0	1.3	4.1	1.7	8.5	5.2	2.4	0.8	3.9	1.8	4.0	2.2
1985	2.0	1.2	4.1	1.7	8.2	5.0	2.4	0.8	4.0	1.7	4.0	2.1
1986	1.7	1.2	4.1	1.7	7.7	5.3	2.3	0.7	4.1	1.7	3.8	2.1
1987	1.8	1.3	3.7	1.6	7.7	5.3	2.0	0.7	3.9	1.6	3.6	2.1
1988	2.0	1.4	3.3	1.5	7.8	5.3	2.1	0.8	3.6	1.6	3.6	2.0
1989	1.7	1.3	3.2	1.3	7.6	4.9	1.8	0.7	3.3	1.5	3.3	1.9
1990	1.5	1.2	2.8	1.2	7.0	4.8	1.9	0.7	3.3	1.4	3.1	1.8
1991	1.4	1.1	2.6	1.1	5.8	4.4	1.6	0.6	3.0	1.3	2.7	1.7
1992	1.2	1.1	2.5	1.0	5.4	4.2	1.4	0.5	2.6	1.2	2.5	1.5
1993	1.3	1.2	2.5	1.1	5.6	4.4	1.5	0.5	2.6	1.2	2.6	1.5
1994	1.2	1.1	2.8	1.2	5.3	4.3	1.6	0.6	2.5	1.2	2.6	1.5
1995	1.1	1.1	2.5	1.2	4.8	4.4	1.5	0.5	2.5	1.2	2.4	1.6
1996	1.3	1.2	2.7	1.2	5.0	4.2	1.6	0.6	2.3	1.2	2.4	1.5
1997	1.2	1.2	2.7	1.2	5.4	4.1	1.5	0.6	2.3	1.1	2.4	1.5
1998	1.2	1.2	2.7	1.2	5.4	3.9	1.5	0.5	2.1	1.0	2.3	1.4
1999	1.3	1.2	2.6	1.1	5.3	3.8	1.3	0.5	2.0	1.0	2.3	1.4
2000	1.3	1.2	2.3	1.0	5.2	3.7	1.3	0.5	1.9	1.0	2.2	1.4
2001	1.2	1.1	2.3	1.0	4.9	3.7	1.4	0.5	1.9	1.0	2.1	1.3
2002	1.1	1.1	2.0	1.0	4.7	3.8	1.2	0.5	1.8	1.0	2.0	1.3
2003	1.3	1.1	2.3	1.1	4.3	3.7	1.3	0.5	1.7	1.0	2.0	1.3
2004	1.2	1.1	2.2	1.1	4.3	3.7	1.2	0.5	1.7	0.9	2.0	1.3

Notes: A large truck is defined as a truck with a gross vehicle weight rating (GVWR) greater than 10,000 pounds. A passenger vehicle is defined as a car or light truck (including pickups, vans, and sport utility vehicles).

Sources: Vehicle Miles of Travel: Federal Highway Administration. Fatal Crashes: National Highway Traffic Safety Administration, Fatality Analysis Reporting System (FARS).

Table 20. Fatalities in Crashes Involving Large Trucks by State, 1994-2004

State	1994	1995	1996	1997	1998	1999	2000	2001	2002	2003	2004
Alabama	171	160	152	172	158	161	159	145	128	147	163
Alaska	5	8	6	7	2	5	4	10	8	5	14
Arizona	94	90	98	73	125	108	105	85	104	119	106
Arkansas	91	102	104	135	109	96	118	98	98	109	110
California	386	433	390	409	378	363	374	378	362	370	415
Colorado	61	53	63	80	61	71	68	95	53	77	69
Connecticut	27	29	34	25	28	21	34	29	18	24	25
Delaware	11	9	14	17	17	11	20	15	17	19	18
District of Columbia	2	1	4	4	1	2	2	1	0	0	5
Florida	310	290	305	308	352	349	310	365	376	365	377
Georgia	214	201	220	254	223	248	219	255	198	232	248
Hawaii	5	3	13	3	3	3	2	8	4	4	4
Idaho	38	38	40	34	28	31	26	34	32	40	29
Illinois	178	171	152	166	184	211	173	200	156	194	158
Indiana	157	165	166	158	181	205	163	135	131	156	157
Iowa	77	88	84	89	92	112	90	83	68	77	70
Kansas	59	68	64	96	86	96	81	80	79	71	94
Kentucky	109	106	100	115	112	94	101	107	122	119	124
Louisiana	119	97	107	132	157	131	126	123	114	130	100
Maine	27	28	15	23	23	25	30	28	22	14	21
Maryland	79	59	70	84	63	54	63	78	63	62	83
Massachusetts	45	36	39	39	35	37	51	30	24	35	41
Michigan	186	172	162	150	159	139	156	122	135	117	109
Minnesota	88	78	77	102	87	91	89	64	86	68	73
Mississippi	98	123	99	106	130	118	123	98	83	72	101
Missouri	148	97	167	158	183	178	183	139	154	167	158
Montana	20	30	21	27	21	19	26	27	26	27	16
Nebraska	52	45	63	53	43	59	56	68	59	56	49
Nevada	28	31	44	31	38	44	37	46	32	32	29
New Hampshire	8	10	12	12	10	11	10	14	15	13	15
New Jersey	84	96	86	92	72	60	94	77	72	75	79
New Mexico	44	47	56	53	46	66	52	59	61	50	63
New York	210	149	161	161	143	177	157	139	132	158	140
North Carolina	207	198	183	231	247	201	191	201	169	162	198
North Dakota	9	12	12	12	11	25	10	12	19	16	14
Ohio	222	217	224	220	200	215	189	168	203	151	190
Oklahoma	83	91	99	105	134	103	112	94	130	102	114
Oregon	64	72	64	80	74	49	52	64	55	65	53
Pennsylvania	221	196	185	196	181	227	184	185	174	224	189
Rhode Island	6	3	6	2	3	9	1	6	5	6	5
South Carolina	104	104	111	90	128	118	133	108	101	99	110
South Dakota	17	14	24	20	15	23	22	21	19	17	18
Tennessee	146	129	175	145	125	185	163	138	150	118	155
Texas	412	381	450	455	479	434	513	486	467	487	468
Utah	32	34	36	57	54	43	39	34	44	21	31
Vermont	10	15	10	18	9	11	9	7	10	10	15
Virginia	132	98	121	130	131	107	115	110	100	120	98
Washington	54	75	73	89	72	63	72	63	55	46	57
West Virginia	61	53	60	60	42	65	57	48	65	57	64
Wisconsin	111	96	105	95	107	81	97	108	109	101	107
Wyoming	22	17	16	25	33	25	21	23	32	30	41
U.S. Total	5,144	4,918	5,142	5,398	5,395	5,380	5,282	5,111	4,939	5,036	5,190

Note: A large truck is defined as a truck with a gross vehicle weight rating (GVWR) greater than 10,000 pounds.
Source: National Highway Traffic Safety Administration, Fatality Analysis Reporting System (FARS).

Table 21. Fatal Crashes Involving Large Trucks by State, 1994-2004

State	1994	1995	1996	1997	1998	1999	2000	2001	2002	2003	2004
Alabama	145	133	137	155	136	136	143	128	112	130	131
Alaska	5	8	6	7	1	5	4	10	4	5	13
Arizona	79	72	77	67	93	94	91	74	84	95	88
Arkansas	81	84	93	101	93	86	100	88	75	93	89
California	319	342	340	338	319	304	331	334	313	311	359
Colorado	55	48	54	73	46	60	60	75	47	58	60
Connecticut	24	24	31	22	28	19	31	26	17	23	25
Delaware	11	9	13	14	16	9	19	11	16	15	17
District of Columbia	2	1	4	3	1	2	2	1	0	0	5
Florida	268	260	260	265	297	294	279	303	320	314	322
Georgia	182	171	192	208	189	204	189	216	169	201	214
Hawaii	4	3	11	3	3	3	2	8	4	4	4
Idaho	36	27	37	28	23	25	25	30	28	37	28
Illinois	155	153	134	155	165	178	152	172	142	162	139
Indiana	139	149	144	143	156	167	138	120	110	142	139
Iowa	69	64	73	74	77	92	78	70	61	56	58
Kansas	48	57	59	78	72	78	70	73	70	62	76
Kentucky	91	99	87	100	94	86	85	91	104	108	110
Louisiana	107	79	87	118	128	111	108	111	95	107	90
Maine	20	22	13	21	21	23	24	23	21	13	18
Maryland	69	48	65	78	57	53	58	70	58	55	67
Massachusetts	41	33	32	37	31	35	45	27	22	34	37
Michigan	161	148	138	124	139	126	137	115	120	104	104
Minnesota	75	71	58	87	75	83	73	59	75	61	64
Mississippi	76	98	83	91	102	104	107	84	71	61	81
Missouri	123	89	143	133	145	144	145	118	137	140	132
Montana	17	26	19	24	18	15	24	25	20	21	14
Nebraska	43	41	45	46	39	52	48	55	47	46	39
Nevada	27	27	39	26	32	38	33	41	29	32	25
New Hampshire	8	7	11	12	10	9	10	13	14	12	13
New Jersey	70	91	79	79	66	56	79	71	63	69	76
New Mexico	36	39	46	45	40	43	42	45	45	37	52
New York	190	142	140	141	128	153	147	128	123	139	121
North Carolina	175	163	155	181	213	179	164	176	152	148	172
North Dakota	8	7	9	11	7	18	9	11	16	14	13
Ohio	180	187	181	185	174	183	166	156	182	134	160
Oklahoma	70	80	83	89	99	80	97	77	97	90	92
Oregon	58	62	52	68	65	41	51	52	44	49	46
Pennsylvania	190	170	169	181	162	187	164	159	157	188	165
Rhode Island	6	3	6	2	3	9	1	5	5	6	5
South Carolina	81	85	91	82	109	105	108	99	83	89	97
South Dakota	15	12	18	15	14	18	18	20	16	14	17
Tennessee	130	112	152	126	113	149	145	117	124	103	128
Texas	314	316	391	384	401	367	412	422	391	419	383
Utah	26	26	32	45	45	39	38	31	34	17	26
Vermont	9	12	9	14	9	8	8	6	10	10	12
Virginia	116	91	104	115	112	94	99	95	82	107	89
Washington	51	60	65	73	63	55	59	55	52	38	50
West Virginia	56	47	51	49	38	48	46	44	55	51	56
Wisconsin	93	83	84	77	86	72	91	91	85	86	90
Wyoming	19	13	11	21	26	21	18	20	23	25	29
U.S. Total	4,373	4,194	4,413	4,614	4,579	4,560	4,573	4,451	4,224	4,335	4,440

Note: A large truck is defined as a truck with a gross vehicle weight rating (GVWR) greater than 10,000 pounds.

Source: National Highway Traffic Safety Administration, Fatality Analysis Reporting System (FARS).

Table 22. Large Trucks Involved in Fatal Crashes by State, 1994-2004

State	1994	1995	1996	1997	1998	1999	2000	2001	2002	2003	2004
Alabama	153	144	141	167	149	144	153	144	123	148	135
Alaska	5	8	7	7	1	5	4	10	4	5	13
Arizona	80	79	79	72	98	108	100	79	88	102	102
Arkansas	85	96	98	113	105	92	109	102	78	101	93
California	350	364	366	369	365	319	362	365	346	333	381
Colorado	55	51	55	75	52	60	65	85	51	61	64
Connecticut	26	25	32	23	29	22	36	28	17	24	27
Delaware	12	9	16	16	18	10	21	11	17	15	18
District of Columbia	2	1	4	3	1	2	2	1	0	0	5
Florida	290	281	279	284	313	327	302	335	351	343	359
Georgia	193	189	211	218	197	220	208	230	203	208	233
Hawaii	4	3	11	3	4	3	2	8	4	4	4
Idaho	37	29	39	30	23	25	26	32	30	38	29
Illinois	168	158	147	166	186	193	163	180	159	178	151
Indiana	148	160	160	160	180	191	167	133	120	166	166
Iowa	75	68	86	75	81	99	84	76	67	62	60
Kansas	50	59	62	81	78	82	79	78	75	73	85
Kentucky	94	101	92	108	99	94	97	95	114	117	123
Louisiana	111	86	89	124	142	120	113	126	103	117	99
Maine	20	24	13	21	21	25	24	27	21	14	18
Maryland	76	49	66	88	66	57	67	76	61	63	76
Massachusetts	41	33	34	38	38	35	46	27	22	34	39
Michigan	173	163	159	127	146	132	147	123	123	110	115
Minnesota	75	76	65	88	79	86	77	60	78	62	66
Mississippi	85	103	88	99	108	111	118	85	72	67	84
Missouri	128	93	150	139	155	155	165	129	151	153	145
Montana	17	26	19	24	18	15	24	27	22	21	15
Nebraska	44	41	48	46	40	58	52	61	59	52	41
Nevada	28	32	40	27	34	41	36	44	33	36	28
New Hampshire	8	8	12	12	10	9	10	14	15	13	13
New Jersey	75	102	82	80	71	59	88	76	69	85	87
New Mexico	37	40	53	51	44	48	45	47	57	39	58
New York	195	148	150	144	130	159	153	134	131	147	128
North Carolina	186	178	166	195	232	190	173	186	166	160	182
North Dakota	9	8	10	12	8	18	11	11	18	14	13
Ohio	197	201	205	203	187	201	189	163	189	147	179
Oklahoma	71	83	89	97	105	82	107	84	108	104	97
Oregon	63	66	58	77	67	48	59	52	45	52	47
Pennsylvania	203	184	184	193	178	207	177	181	174	213	209
Rhode Island	6	3	6	2	3	9	1	5	5	6	5
South Carolina	88	90	98	89	118	124	120	106	91	96	102
South Dakota	15	15	18	15	14	18	22	22	16	14	17
Tennessee	137	115	165	130	133	168	157	129	130	113	141
Texas	333	333	411	411	425	385	447	460	414	448	423
Utah	27	28	33	47	49	41	39	33	38	18	26
Vermont	10	12	9	15	10	8	8	6	10	12	12
Virginia	126	93	118	120	115	107	112	115	89	122	95
Washington	53	64	69	77	70	59	64	56	53	39	52
West Virginia	57	50	58	52	40	50	48	48	57	55	61
Wisconsin	103	85	94	80	90	74	98	95	93	89	94
Wyoming	20	15	11	24	30	25	18	23	27	28	47
U.S. Total	4,644	4,472	4,755	4,917	4,955	4,920	4,995	4,823	4,587	4,721	4,862

Note: A large truck is defined as a truck with a gross vehicle weight rating (GVWR) greater than 10,000 pounds.

Source: National Highway Traffic Safety Administration, Fatality Analysis Reporting System (FARS).

Table 23. Single-Vehicle Fatal Crashes Involving Large Trucks by State, 1994-2004

State	1994	1995	1996	1997	1998	1999	2000	2001	2002	2003	2004
Alabama	21	14	23	23	22	23	25	19	17	16	18
Alaska	2	4	1	4	0	0	2	3	0	2	5
Arizona	19	16	15	14	22	13	21	17	16	16	19
Arkansas	7	16	24	17	18	13	28	19	18	18	16
California	72	86	95	94	69	82	74	83	67	59	71
Colorado	11	9	9	18	12	12	11	12	9	8	8
Connecticut	9	4	9	7	10	3	6	7	4	7	7
Delaware	0	0	3	3	3	2	1	2	2	0	1
District of Columbia	2	1	2	0	0	1	1	0	0	0	3
Florida	48	51	41	50	46	35	45	48	52	56	49
Georgia	19	28	32	23	25	32	32	38	26	39	39
Hawaii	0	1	4	2	0	0	0	5	2	2	0
Idaho	7	5	5	6	4	5	4	6	5	8	6
Illinois	23	33	16	37	19	27	23	34	26	22	20
Indiana	24	27	18	19	15	30	16	16	19	17	22
Iowa	7	3	7	14	5	7	9	8	5	6	12
Kansas	11	8	11	15	7	11	5	17	9	5	9
Kentucky	5	19	16	20	18	24	16	10	18	16	20
Louisiana	18	15	19	23	24	13	22	17	16	14	15
Maine	2	3	2	6	5	4	3	3	3	2	3
Maryland	11	6	9	12	6	13	7	9	7	6	13
Massachusetts	11	7	9	10	6	8	9	9	4	11	11
Michigan	21	13	17	14	18	17	18	12	10	14	13
Minnesota	8	6	7	13	9	12	10	11	10	8	10
Mississippi	12	14	19	10	14	13	26	14	11	8	16
Missouri	21	18	18	15	25	31	32	16	23	30	15
Montana	6	5	2	9	8	4	6	7	4	2	8
Nebraska	8	7	5	8	8	5	5	8	11	4	2
Nevada	6	7	6	8	7	13	9	11	4	12	2
New Hampshire	3	0	1	4	2	2	0	0	2	1	5
New Jersey	11	12	16	10	14	16	17	17	17	8	18
New Mexico	15	14	11	15	13	9	11	14	16	10	15
New York	61	43	44	44	42	57	44	37	31	49	35
North Carolina	24	27	15	18	43	29	30	31	33	21	34
North Dakota	0	1	0	2	1	0	1	2	2	1	0
Ohio	25	28	14	26	27	32	24	21	22	13	13
Oklahoma	13	13	17	19	11	15	16	12	20	16	18
Oregon	18	19	6	12	17	9	9	13	7	8	10
Pennsylvania	35	30	26	31	28	30	26	26	26	35	31
Rhode Island	3	2	5	1	1	2	0	0	0	2	0
South Carolina	12	12	11	13	17	9	14	16	9	20	19
South Dakota	5	2	3	3	3	6	4	3	4	3	4
Tennessee	20	17	26	30	15	29	28	24	17	20	16
Texas	76	65	59	67	82	58	57	66	62	81	60
Utah	8	5	7	11	14	11	11	8	8	3	10
Vermont	2	3	1	5	1	1	1	2	0	2	2
Virginia	26	14	19	24	31	18	15	18	20	15	19
Washington	13	11	15	11	10	8	10	9	11	5	8
West Virginia	11	11	15	4	5	10	13	13	11	7	10
Wisconsin	12	13	5	11	9	5	9	14	10	14	12
Wyoming	5	2	4	5	6	5	3	6	4	9	6
U.S. Total	809	770	764	860	817	814	809	813	730	751	778

Note: A large truck is defined as a truck with a gross vehicle weight rating (GVWR) greater than 10,000 pounds.
 Source: National Highway Traffic Safety Administration, Fatality Analysis Reporting System (FARS).

Table 24. Multiple-Vehicle Fatal Crashes Involving Large Trucks by State, 1994-2004

State	1994	1995	1996	1997	1998	1999	2000	2001	2002	2003	2004
Alabama	124	119	114	132	114	113	118	109	95	114	113
Alaska	3	4	5	3	1	5	2	7	4	3	8
Arizona	60	56	62	53	71	81	70	57	68	79	69
Arkansas	74	68	69	84	75	73	72	69	57	75	73
California	247	256	245	244	250	222	257	249	246	252	288
Colorado	44	39	45	55	34	48	49	62	38	50	52
Connecticut	15	20	22	15	18	16	25	19	13	16	18
Delaware	11	9	10	11	13	7	18	9	14	15	16
District of Columbia	0	0	2	3	1	1	1	1	0	0	2
Florida	220	209	219	215	251	259	234	252	268	258	273
Georgia	163	143	160	185	164	172	157	178	143	162	175
Hawaii	4	2	7	1	3	3	2	3	2	2	4
Idaho	29	22	32	22	19	20	21	24	23	29	22
Illinois	132	120	118	118	146	151	129	137	116	140	119
Indiana	115	122	126	124	141	137	122	104	91	125	117
Iowa	62	61	66	60	72	85	69	62	56	50	46
Kansas	37	49	48	63	65	67	65	56	61	57	67
Kentucky	86	80	71	80	76	62	69	81	86	92	90
Louisiana	89	64	68	95	104	98	86	94	79	93	75
Maine	18	19	11	15	16	19	21	19	18	11	15
Maryland	58	42	56	66	51	40	51	61	51	49	54
Massachusetts	30	26	23	27	25	27	36	18	18	23	26
Michigan	140	135	121	110	121	109	119	103	110	90	91
Minnesota	67	65	51	74	66	71	63	48	65	53	54
Mississippi	64	84	64	81	88	91	81	70	60	53	65
Missouri	102	71	125	118	120	113	113	101	114	110	117
Montana	11	21	17	15	10	11	18	18	16	19	6
Nebraska	35	34	40	38	31	47	43	47	36	42	37
Nevada	21	20	33	18	25	25	24	30	25	20	23
New Hampshire	5	7	10	8	8	7	10	13	12	11	8
New Jersey	59	79	63	69	52	40	62	54	46	61	58
New Mexico	21	25	35	30	27	34	31	31	29	27	37
New York	129	99	96	97	86	96	103	91	92	90	86
North Carolina	151	136	140	163	170	150	134	145	119	127	138
North Dakota	8	6	9	9	6	18	8	9	14	13	13
Ohio	155	159	167	159	147	151	142	135	160	121	147
Oklahoma	57	67	66	70	88	65	81	65	77	74	74
Oregon	40	43	46	56	48	32	42	38	37	41	36
Pennsylvania	155	140	143	150	134	157	138	131	131	153	134
Rhode Island	3	1	1	1	2	7	1	5	5	4	5
South Carolina	69	73	80	69	92	96	94	82	74	69	78
South Dakota	10	10	15	12	11	12	14	17	12	11	13
Tennessee	110	95	126	96	98	120	117	93	107	83	112
Texas	238	251	332	317	319	309	355	355	329	338	323
Utah	18	21	25	34	31	28	27	23	26	14	16
Vermont	7	9	8	9	8	7	7	4	10	8	10
Virginia	90	77	85	91	81	76	84	76	62	92	70
Washington	38	49	50	62	53	47	49	45	41	33	42
West Virginia	45	36	36	45	33	38	33	30	44	44	46
Wisconsin	81	70	79	66	77	67	82	77	75	72	78
Wyoming	14	11	7	16	20	16	15	14	19	16	23
U.S. Total	3,564	3,424	3,649	3,754	3,762	3,746	3,764	3,621	3,494	3,584	3,662

Note: A large truck is defined as a truck with a gross vehicle weight rating (GVWR) greater than 10,000 pounds.

Source: National Highway Traffic Safety Administration, Fatality Analysis Reporting System (FARS).

Crashes

This chapter contains information on the circumstances of large truck crashes. Below is a summary of some of the information in this section:

- ◆ Of the 399,000 police-reported crashes involving large trucks in 2004, 4,440 (1 percent) resulted in at least one fatality, and 83,000 (21 percent) resulted in at least one nonfatal injury.
- ◆ Single-vehicle crashes made up 18 percent of all fatal crashes, 18 percent of all injury crashes, and 28 percent of all property damage only crashes involving large trucks.
- ◆ Two-thirds (66 percent) of all fatal crashes involving large trucks occurred on rural roads, and one-fourth (25 percent) occurred on Interstate highways.
- ◆ One-third (33 percent) of all fatal crashes and nearly one-fourth (21 percent) of all property damage only crashes involving large trucks occurred at night.
- ◆ The vast majority of fatal crashes (85 percent) and of nonfatal crashes (88 percent) involving large trucks occurred on weekdays (Monday through Friday).
- ◆ Collision with a vehicle in transport was the first harmful event in 77 percent of fatal crashes involving large trucks.
- ◆ Rollover was the first harmful event in only 4 percent of all fatal crashes involving large trucks and in only 3 percent of all nonfatal crashes involving large trucks.

Table 25. Crashes Involving Large Trucks by First Harmful Event and Crash Severity

First Harmful Event	Single-Vehicle		Multiple-Vehicle		Total	
	Number	Percent	Number	Percent	Number	Percent
Fatal Crashes						
Collision with Vehicle in Transport	0	0.0%	3,430	93.7%	3,430	77.3%
Collision with Fixed Object	236	30.3%	94	2.6%	330	7.4%
Collision with Pedestrian	237	30.5%	42	1.1%	279	6.3%
Overturn (Rollover)	127	16.3%	42	1.1%	169	3.8%
Collision with Pedalcycle	74	9.5%	3	0.1%	77	1.7%
Collision with Parked Motor Vehicle	17	2.2%	9	0.2%	26	0.6%
Collision with Train	15	1.9%	1	*	16	0.4%
Collision with Other Object	13	1.7%	3	0.1%	16	0.4%
Collision with Animal	6	0.8%	0	0.0%	6	0.1%
Explosion/Fire	0	0.0%	0	0.0%	0	0.0%
Other	21	2.7%	9	0.2%	30	0.7%
Unknown	32	4.1%	29	0.8%	61	1.4%
Total	778	100.0%	3,662	100.0%	4,440	100.0%
Injury Crashes						
Collision with Vehicle in Transport	*	*	65,000	95.6%	65,000	78.5%
Collision with Fixed Object	5,000	32.6%	1,000	1.5%	6,000	7.0%
Collision with Pedestrian	2,000	16.2%	*	*	2,000	2.9%
Overturn (Rollover)	5,000	35.3%	*	0.7%	6,000	6.9%
Collision with Pedalcycle	1,000	4.7%	*	*	1,000	0.8%
Collision with Parked Motor Vehicle	1,000	7.9%	*	*	1,000	1.5%
Collision with Train	*	0.4%	*	*	*	0.1%
Collision with Other Object	*	0.5%	*	0.1%	*	0.1%
Collision with Animal	*	0.1%	*	*	*	*
Jackknife	*	1.1%	*	0.3%	*	0.4%
Explosion/Fire	*	0.1%	*	*	*	*
Other	*	1.1%	1,000	1.9%	1,000	1.7%
Total	15,000	100.0%	68,000	100.0%	83,000	100.0%
Property Damage Only Crashes						
Collision with Vehicle in Transport	*	*	212,000	94.0%	212,000	68.1%
Collision with Fixed Object	31,000	36.3%	1,000	0.6%	33,000	10.4%
Collision with Pedestrian	*	*	*	*	*	*
Overturn (Rollover)	4,000	4.5%	*	*	4,000	1.2%
Collision with Pedalcycle	*	*	*	*	*	*
Collision with Parked Motor Vehicle	38,000	44.5%	*	*	38,000	12.3%
Collision with Train	*	*	*	*	*	*
Collision with Other Object	1,000	1.1%	1,000	0.2%	1,000	0.5%
Collision with Animal	5,000	6.4%	*	*	5,000	1.8%
Jackknife	1,000	1.7%	*	0.2%	2,000	0.6%
Explosion/Fire	1,000	1.4%	*	*	1,000	0.4%
Other	4,000	4.1%	11,000	4.9%	15,000	4.7%
Total	86,000	100.0%	226,000	100.0%	312,000	100.0%

*Less than 500 or less than 0.05 percent.

Note: A large truck is defined as a truck with a gross vehicle weight rating (GVWR) greater than 10,000 pounds.

Sources: Fatal Crashes: National Highway Traffic Safety Administration, Fatality Analysis Reporting System (FARS). Injury and Property Damage Only Crashes: National Highway Traffic Safety Administration, General Estimates System (GES).

Table 26. Fatal Crashes Involving Large Trucks by Speed Limit

Speed Limit	Single-Vehicle Crashes		Multiple-Vehicle Crashes		Total	
	Number	Percent	Number	Percent	Number	Percent
25 mph or Less	47	6.0%	38	1.0%	85	1.9%
30 - 35 mph	106	13.6%	198	5.4%	304	6.8%
40 - 45 mph	71	9.1%	550	15.0%	621	14.0%
50 - 55 mph	236	30.3%	1,579	43.1%	1,815	40.9%
60 - 65 mph	159	20.4%	803	21.9%	962	21.7%
70 - 75 mph	121	15.6%	454	12.4%	575	13.0%
90 mph	0	0.0%	1	*	1	*
No Statutory Limit	6	0.8%	2	0.1%	8	0.2%
Unknown	32	4.1%	37	1.0%	69	1.6%
Total	778	100.0%	3,662	100.0%	4,440	100.0%

*Less than 0.05 percent.

Note: A large truck is defined as a truck with a gross vehicle weight rating (GVWR) greater than 10,000 pounds.

Source: National Highway Traffic Safety Administration, Fatality Analysis Reporting System (FARS).

Table 27. Fatal Crashes Involving Large Trucks by Roadway Function Class

Rural			Urban		
Roadway Function Class	Number	Percent	Roadway Function Class	Number	Percent
Interstate	661	14.9%	Interstate	458	10.3%
Other Principal Arterial	922	20.8%	Freeway/Expressway	165	3.7%
Minor Arterial	640	14.4%	Other Principal Arterial	416	9.4%
Major Collector	445	10.0%	Minor Arterial	234	5.3%
Minor Collector	90	2.0%	Collector	65	1.5%
Local Road	145	3.3%	Local Road	152	3.4%
Unknown	7	0.2%	Unknown	12	0.3%
Total Rural	2,910	65.5%	Total Urban	1,502	33.8%
Unknown Rural or Urban	28	0.6%	Total Fatal Crashes	4,440	100.0%

Note: A large truck is defined as a truck with a gross vehicle weight rating (GVWR) greater than 10,000 pounds.

Source: National Highway Traffic Safety Administration, Fatality Analysis Reporting System (FARS).

Table 28. Crashes Involving Large Trucks by Time of Day and Crash Severity

Time of Day	Fatal		Injury		Property Damage Only	
	Number	Percent	Number	Percent	Number	Percent
12am - 3am	312	7.0%	3,000	3.4%	12,000	3.8%
3am - 6am	404	9.1%	4,000	4.5%	10,000	3.1%
6am - 9am	642	14.5%	15,000	17.8%	48,000	15.3%
9am - 12pm	791	17.8%	17,000	20.7%	67,000	21.6%
12pm - 3pm	850	19.1%	17,000	20.3%	67,000	21.6%
3pm - 6pm	675	15.2%	16,000	19.8%	64,000	20.6%
6pm - 9pm	428	9.6%	6,000	7.1%	26,000	8.3%
9pm - 12am	337	7.6%	5,000	6.2%	18,000	5.6%
Unknown	1	*				
<i>Daytime (6am - 6pm)</i>	<i>2,958</i>	<i>66.6%</i>	<i>65,000</i>	<i>78.7%</i>	<i>247,000</i>	<i>79.1%</i>
<i>Nighttime (6pm - 6am)</i>	<i>1,482</i>	<i>33.4%</i>	<i>18,000</i>	<i>21.3%</i>	<i>65,000</i>	<i>20.9%</i>
Total	4,440	100.0%	83,000	100.0%	312,000	100.0%

*Less than 0.05 percent.

Note: A large truck is defined as a truck with a gross vehicle weight rating (GVWR) greater than 10,000 pounds.

Sources: Fatal Crashes: National Highway Traffic Safety Administration, Fatality Analysis Reporting System (FARS). Injury and Property Damage Only Crashes: National Highway Traffic Safety Administration, General Estimates System (GES).

Table 29. Crashes Involving Large Trucks by Day of Week and Crash Severity

Day of Week	Fatal		Injury		Property Damage Only	
	Number	Percent	Number	Percent	Number	Percent
Sunday	278	6.3%	3,000	4.1%	15,000	4.9%
Monday	718	16.2%	15,000	17.7%	56,000	18.1%
Tuesday	717	16.1%	16,000	19.4%	58,000	18.5%
Wednesday	771	17.4%	16,000	19.0%	57,000	18.1%
Thursday	760	17.1%	13,000	15.7%	44,000	14.1%
Friday	795	17.9%	14,000	16.7%	57,000	18.1%
Saturday	401	9.0%	6,000	7.4%	25,000	8.0%
Total	4,440	100.0%	83,000	100.0%	312,000	100.0%

Note: A large truck is defined as a truck with a gross vehicle weight rating (GVWR) greater than 10,000 pounds.

Sources: Fatal Crashes: National Highway Traffic Safety Administration, Fatality Analysis Reporting System (FARS). Injury and Property Damage Only Crashes: National Highway Traffic Safety Administration, General Estimates System (GES).

Table 30. Crashes Involving Large Trucks by Trafficway Flow and Crash Severity

Trafficway Flow	Fatal		Injury		Property Damage Only	
	Number	Percent	Number	Percent	Number	Percent
Not Physically Divided	2,353	53.0%	36,000	42.9%	127,000	40.8%
Divided Median, No Barrier	1,406	31.7%	37,000	44.8%	110,000	35.1%
Divided Median, With Barrier	567	12.8%				
One-Way Traffic	93	2.1%	4,000	4.4%	14,000	4.5%
Unknown	21	0.5%	6,000	7.8%	61,000	19.5%
Total	4,440	100.0%	83,000	100.0%	312,000	100.0%

Note: A large truck is defined as a truck with a gross vehicle weight rating (GVWR) greater than 10,000 pounds.
 Sources: Fatal Crashes: National Highway Traffic Safety Administration, Fatality Analysis Reporting System (FARS). Injury and Property Damage Only Crashes: National Highway Traffic Safety Administration, General Estimates System (GES).

Table 31. Crashes Involving Large Trucks by Relation to Junction and Crash Severity

Relation to Junction	Fatal		Injury		Property Damage Only	
	Number	Percent	Number	Percent	Number	Percent
Non-Interchange						
Non-Junction	2,832	63.8%	40,000	48.3%	155,000	49.6%
Intersection	1,023	23.0%	16,000	19.4%	37,000	11.8%
Intersection Related	160	3.6%	14,000	16.7%	60,000	19.2%
Driveway, Alley Access	77	1.7%	4,000	5.0%	21,000	6.7%
Entrance/Exit Ramp Related	18	0.4%	*	0.6%	1,000	0.3%
Rail Grade Crossing	18	0.4%	*	0.3%	2,000	0.6%
On Bridge	0	0.0%	1,000	1.7%	11,000	3.6%
In Crossover	20	0.5%	*	0.2%	1,000	0.4%
Other	89	2.0%	*	0.4%	2,000	0.7%
Unknown	0	0.0%				
<i>Subtotal</i>	<i>4,237</i>	<i>95.4%</i>	<i>77,000</i>	<i>92.8%</i>	<i>289,000</i>	<i>92.8%</i>
Interchange Area						
Non-Junction	0	0.0%	1,000	1.6%	4,000	1.4%
Intersection	26	0.6%	1,000	1.8%	2,000	0.7%
Intersection Related	18	0.4%	*	0.3%	1,000	0.3%
Driveway, Alley Access	1	*	*	*	*	*
Entrance/Exit Ramp Related	54	1.2%	3,000	3.5%	14,000	4.6%
On Bridge	0	0.0%	*	0.1%	*	0.1%
In Crossover	2	*	*	*	*	*
Other	101	2.3%	*	*	*	0.1%
Unknown	0	0.0%				
<i>Subtotal</i>	<i>202</i>	<i>4.5%</i>	<i>6,000</i>	<i>7.2%</i>	<i>22,000</i>	<i>7.2%</i>
Unknown Relation to Junction	1	*				
Total	4,440	100.0%	83,000	100.0%	312,000	100.0%

*Less than 500 or less than 0.05 percent.

Note: A large truck is defined as a truck with a gross vehicle weight rating (GVWR) greater than 10,000 pounds.
 Sources: Fatal Crashes: National Highway Traffic Safety Administration, Fatality Analysis Reporting System (FARS). Injury and Property Damage Only Crashes: National Highway Traffic Safety Administration, General Estimates System (GES).

Table 32. Crashes Involving Large Trucks by Relation to Roadway and Crash Severity

Relation to Roadway	Single-Vehicle		Multiple-Vehicle		Total	
	Number	Percent	Number	Percent	Number	Percent
Fatal Crashes						
On Roadway	393	50.5%	3,459	94.5%	3,852	86.8%
Shoulder	90	11.6%	96	2.6%	186	4.2%
Median	33	4.2%	41	1.1%	74	1.7%
Roadside	182	23.4%	42	1.1%	224	5.0%
Outside of Roadway	23	3.0%	7	0.2%	30	0.7%
Off Roadway, Location Unknown	51	6.6%	7	0.2%	58	1.3%
In Parking Lane	1	*	0	0.0%	1	*
Gore	4	0.5%	6	0.2%	10	0.2%
Separator	1	0.1%	1	*	2	*
Two-Way Continuous Left-Turn Lane	0	0.0%	2	0.1%	2	*
Unknown	0	0.0%	1	*	1	*
Total	778	100.0%	3,662	100.0%	4,440	100.0%
Injury Crashes						
On Roadway	6,000	38.5%	66,000	97.4%	72,000	86.8%
Shoulder	1,000	5.3%	*	0.6%	1,000	1.4%
Median	1,000	6.6%	1,000	1.0%	2,000	2.0%
Roadside	5,000	31.6%	*	0.8%	5,000	6.3%
Outside of Roadway	1,000	6.3%	*	*	1,000	1.1%
Off Roadway, Location Unknown	*	3.0%	*	*	*	0.5%
In Parking Lane	1,000	6.8%	*	*	1,000	1.2%
Gore	*	1.0%	*	0.1%	*	0.3%
Separator	*	*	*	*	*	*
Two-Way Continuous Left-Turn Lane	*	*	*	0.1%	*	0.1%
Unknown	*	0.9%	*	*	*	0.2%
Total	15,000	100.0%	68,000	100.0%	83,000	100.0%
Property Damage Only Crashes						
On Roadway	17,000	20.1%	221,000	97.9%	239,000	76.5%
Shoulder	2,000	1.9%	1,000	0.4%	3,000	0.8%
Median	3,000	2.9%	1,000	0.4%	4,000	1.1%
Roadside	24,000	27.9%	1,000	0.4%	25,000	8.0%
Outside of Roadway	2,000	2.5%	*	*	2,000	0.7%
Off Roadway, Location Unknown	2,000	1.8%	*	*	2,000	0.5%
In Parking Lane	35,000	41.4%	*	0.2%	36,000	11.5%
Gore	*	0.5%	*	*	*	0.1%
Separator	*	*	*	*	*	*
Two-Way Continuous Left-Turn Lane	*	*	1,000	0.4%	1,000	0.3%
Unknown	1,000	1.0%	*	0.2%	1,000	0.4%
Total	86,000	100.0%	226,000	100.0%	312,000	100.0%

*Less than 500 or less than 0.05 percent.

Note: A large truck is defined as a truck with a gross vehicle weight rating (GVWR) greater than 10,000 pounds.

Sources: Fatal Crashes: National Highway Traffic Safety Administration, Fatality Analysis Reporting System (FARS). Injury and Property Damage Only Crashes: National Highway Traffic Safety Administration, General Estimates System (GES).

Table 33. Crashes Involving Large Trucks by Weather Conditions and Crash Severity

Weather Conditions	Fatal		Injury		Property Damage Only	
	Number	Percent	Number	Percent	Number	Percent
Normal	3,715	83.7%	69,000	83.5%	271,000	87.0%
Rain	456	10.3%	10,000	11.7%	27,000	8.8%
Sleet	23	0.5%	*	0.3%	1,000	0.4%
Snow	119	2.7%	3,000	3.4%	9,000	2.7%
Fog	76	1.7%	1,000	0.8%	2,000	0.7%
Other	48	1.1%	*	0.3%	1,000	0.4%
Unknown	3	0.1%				
Total	4,440	100.0%	83,000	100.0%	312,000	100.0%

*Less than 500.

Note: A large truck is defined as a truck with a gross vehicle weight rating (GVWR) greater than 10,000 pounds.

Sources: Fatal Crashes: National Highway Traffic Safety Administration, Fatality Analysis Reporting System (FARS). Injury and Property Damage Only Crashes: National Highway Traffic Safety Administration, General Estimates System (GES).

Table 34. Crashes Involving Large Trucks by Road Surface Conditions and Crash Severity

Road Surface Condition	Fatal		Injury		Property Damage Only	
	Number	Percent	Number	Percent	Number	Percent
Dry	3,549	79.9%	65,000	78.2%	244,000	78.4%
Wet	680	15.3%	14,000	16.6%	52,000	16.6%
Snow or Slush	101	2.3%	2,000	3.0%	10,000	3.2%
Ice	89	2.0%	1,000	1.7%	5,000	1.4%
Sand, Dirt, Oil	4	*	*	*	1,000	0.3%
Other	6	0.1%	*	0.5%	*	0.1%
Unknown	11	0.2%				
Total	4,440	100.0%	83,000	100.0%	312,000	100.0%

*Less than 500 or less than 0.05 percent.

Note: A large truck is defined as a truck with a gross vehicle weight rating (GVWR) greater than 10,000 pounds.

Sources: Fatal Crashes: National Highway Traffic Safety Administration, Fatality Analysis Reporting System (FARS). Injury and Property Damage Only Crashes: National Highway Traffic Safety Administration, General Estimates System (GES).

Table 35. Crashes Involving Large Trucks by Light Conditions and Crash Severity

Light Conditions	Fatal		Injury		Property Damage Only	
	Number	Percent	Number	Percent	Number	Percent
Daylight	2,888	65.0%	64,000	77.2%	242,000	77.8%
Dark	1,004	22.6%	8,000	10.2%	23,000	7.3%
Dark but Lighted	375	8.4%	7,000	9.0%	37,000	11.9%
Dawn	110	2.5%	2,000	2.2%	5,000	1.5%
Dusk	60	1.4%	1,000	1.4%	5,000	1.6%
Unknown	3	0.1%				
Total	4,440	100.0%	83,000	100.0%	312,000	100.0%

Note: A large truck is defined as a truck with a gross vehicle weight rating (GVWR) greater than 10,000 pounds.

Sources: Fatal Crashes: National Highway Traffic Safety Administration, Fatality Analysis Reporting System (FARS). Injury and Property Damage Only Crashes: National Highway Traffic Safety Administration, General Estimates System (GES).

Table 36. Crashes Involving Large Trucks by Construction/Maintenance Zone and Crash Severity

Work Zone	Fatal		Injury		Property Damage Only	
	Number	Percent	Number	Percent	Number	Percent
Yes	225	5.1%	4,000	4.3%	13,000	4.3%
No	4,215	94.9%	79,000	94.8%	295,000	94.7%
Unknown			1,000	0.9%	3,000	1.0%
Total	4,440	100.0%	83,000	100.0%	312,000	100.0%

Note: A large truck is defined as a truck with a gross vehicle weight rating (GVWR) greater than 10,000 pounds.

Sources: Fatal Crashes: National Highway Traffic Safety Administration, Fatality Analysis Reporting System (FARS). Injury and Property Damage Only Crashes: National Highway Traffic Safety Administration, General Estimates System (GES).

Vehicles

This chapter presents information on large trucks involved in fatal, injury, and property damage only crashes. Some of the data in this chapter come from the MCMIS Crash File, which contains data on trucks and buses in crashes that meet the National Governors' Association (NGA)/SAFETYNET recommended threshold. MCMIS data are used for the tables on vehicle configuration (Table 37), crashes by cargo body type (Table 38), gross vehicle weight rating (Table 39), and hazardous materials (Tables 40 and 41). NGA/SAFETYNET nonfatal crashes tend to be more serious than GES nonfatal crashes, because the NGA/SAFETYNET threshold requires at least one injury involving immediate medical attention away from the crash scene, or at least one vehicle disabled as a result of the crash and transported away from the crash scene. Below is a summary of some of the vehicle information in this section:

- ◆ In 2004, 4,862 large trucks were involved in fatal crashes, 87,000 were involved in injury crashes, and 324,000 were involved in property damage only crashes.
- ◆ Large trucks made up 8 percent of all vehicles in fatal crashes, 3 percent of all vehicles in injury crashes, and 4 percent of all vehicles in property damage only crashes.
- ◆ Hazardous materials (HM) placards were present on 5 percent of the large trucks involved in fatal crashes and 2 percent of those in nonfatal crashes. HM was released from the cargo compartments of 14 percent of the placarded trucks.
- ◆ "Collision with motor vehicle in transport" was recorded as the most harmful event for 77 percent of the large trucks involved in fatal crashes.
- ◆ Doubles (truck tractors pulling two trailers) made up 4 percent of the large trucks involved in fatal crashes. No large truck fatal crashes involving triples (tractors pulling three trailers) were reported for 2004.

Table 37. Large Trucks in Crashes by Vehicle Configuration

Vehicle Configuration	Fatal		Injury		Towaway	
	Number	Percent	Number	Percent	Number	Percent
Single-Unit, 2 Axles	610	12.5%	8,784	14.5%	9,752	13.2%
Single-Unit, 3+ Axles	550	11.3%	7,613	12.5%	7,290	9.9%
Single-Unit, Axles Unknown	142	2.9%				
Truck/Trailer(s)	77	1.6%	6,152	10.1%	8,581	11.6%
Truck Tractor (Bobtail)	108	2.2%	2,129	3.5%	1,920	2.6%
Tractor/Semi-trailer	3,073	63.2%	28,146	46.3%	35,488	48.2%
Tractor/Double	169	3.5%	1,392	2.3%	2,094	2.8%
Tractor/Triple	0	0.0%	64	0.1%	78	0.1%
Unknown	133	2.7%	2,534	4.2%	3,869	5.3%
Missing			3,920	6.5%	4,606	6.3%
Total	4,862	100.0%	60,734	100.0%	73,678	100.0%

Notes: A large truck is defined here as a truck, used for commercial purposes, with a gross vehicle weight rating (GVWR) or gross combination weight rating greater than 10,000 pounds. Injury crashes are defined here as crashes that resulted in at least one injury involving immediate medical attention away from the crash scene. (Note that this definition of an injury crash is not the same as that used in the GES injury estimates presented in other tables of this report.) Towaway crashes are defined here as crashes in which at least one vehicle was disabled as a result of the crash and transported away from the crash scene.

Sources: Fatal Crashes: National Highway Traffic Safety Administration, Fatality Analysis Reporting System (FARS). Injury and Towaway Crashes: Federal Motor Carrier Safety Administration, MCMIS Crash File.

Table 38. Large Trucks in Crashes by Cargo Body Type

Cargo Body Type	Fatal		Injury		Towaway	
	Number	Percent	Number	Percent	Number	Percent
Van/Enclosed Box	2,340	48.1%	21,140	34.8%	28,794	39.1%
Cargo Tank	376	7.7%	3,418	5.6%	3,545	4.8%
Flatbed	622	12.8%	6,971	11.5%	8,437	11.5%
Dump	494	10.2%	5,669	9.3%	5,897	8.0%
Concrete Mixer	58	1.2%	786	1.3%	649	0.9%
Auto Transporter	24	0.5%	661	1.1%	786	1.1%
Garbage/Refuse	114	2.3%	1,536	2.5%	1,630	2.2%
Grain, Gravel, etc.	124	2.6%	892	1.5%	1,079	1.5%
Pole	70	1.4%	321	0.5%	334	0.5%
No Cargo Body	124	2.6%				
Other Large Truck	235	4.8%	9,301	15.3%	10,104	13.7%
Unknown Large Truck	264	5.4%	6,755	11.1%	9,564	13.0%
Not Applicable	11	0.2%	3,148	5.2%	2,819	3.8%
Unknown	6	0.1%	136	0.2%	40	0.1%
Total	4,862	100.0%	60,734	100.0%	73,678	100.0%

Notes: A large truck is defined here as a truck, used for commercial purposes, with a gross vehicle weight rating (GVWR) or gross combination weight rating greater than 10,000 pounds. Injury crashes are defined here as crashes that resulted in at least one injury involving immediate medical attention away from the crash scene. (Note that this definition of an injury crash is not the same as that used in the GES injury estimates presented in other tables of this report.) Towaway crashes are defined here as crashes in which at least one vehicle was disabled as a result of the crash and transported away from the crash scene.

Sources: Fatal Crashes: National Highway Traffic Safety Administration, Fatality Analysis Reporting System (FARS). Injury and Towaway Crashes: Federal Motor Carrier Safety Administration, MCMIS Crash File.

Table 39. Large Trucks in Crashes by Gross Vehicle Weight Rating

Gross Vehicle Weight Rating	Fatal		Injury		Towaway	
	Number	Percent	Number	Percent	Number	Percent
≤10,000 lbs	0	0.0%	721	1.2%	890	1.2%
10,001 - 26,000 lbs	504	10.4%	7,379	12.1%	9,377	12.7%
≥26,001 lbs	4,329	89.0%	35,086	57.8%	46,388	63.0%
Missing	0	0.0%	17,548	28.9%	17,023	23.1%
Unknown	29	0.6%				
Total	4,862	100.0%	60,734	100.0%	73,678	100.0%

Notes: A large truck is defined here as a truck, used for commercial purposes, with a gross vehicle weight rating (GVWR) or gross combination weight rating greater than 10,000 pounds. Injury crashes are defined here as crashes that resulted in at least one injury involving immediate medical attention away from the crash scene. (Note that this definition of an injury crash is not the same as that used in the GES injury estimates presented in other tables of this report.) Towaway crashes are defined here as crashes in which at least one vehicle was disabled as a result of the crash and transported away from the crash scene.

Sources: Fatal Crashes: National Highway Traffic Safety Administration, Fatality Analysis Reporting System (FARS). Injury and Towaway Crashes: Federal Motor Carrier Safety Administration, MCMIS Crash File.

Table 40. Large Trucks in Crashes by Hazardous Materials (HM) Cargo

HM Cargo	Fatal		Injury		Towaway	
	Number	Percent	Number	Percent	Number	Percent
Yes	223	4.6%	1,091	1.8%	1,318	1.8%
No	4,545	93.5%	50,272	82.8%	56,661	76.9%
Unknown	94	1.9%	9,371	15.4%	15,699	21.3%
Total	4,862	100.0%	60,734	100.0%	73,678	100.0%

Notes: A large truck is defined here as a truck, used for commercial purposes, with a gross vehicle weight rating (GVWR) or gross combination weight rating greater than 10,000 pounds. Injury crashes are defined here as crashes that resulted in at least one injury involving immediate medical attention away from the crash scene. (Note that this definition of an injury crash is not the same as that used in the GES injury estimates presented in other tables of this report.) Towaway crashes are defined here as crashes in which at least one vehicle was disabled as a result of the crash and transported away from the crash scene.

Sources: Fatal Crashes: National Highway Traffic Safety Administration, Fatality Analysis Reporting System (FARS). Injury and Towaway Crashes: Federal Motor Carrier Safety Administration, MCMIS Crash File.

Table 41. Large Trucks in Crashes by Hazardous Materials (HM) Cargo Type and HM Release

HM Cargo Type	HM Release							
	Yes		No		Unknown		Total	
	Number	Percent	Number	Percent	Number	Percent	Number	Percent
Fatal Crashes								
Explosives	2	6.1%	3	4.3%	0	0.0%	5	4.4%
Gases	1	3.0%	8	11.4%	1	10.0%	10	8.8%
Flammable Liquids	17	51.5%	26	37.1%	5	50.0%	48	42.5%
Flammable Solids	1	3.0%	1	1.4%	0	0.0%	2	1.8%
Oxidizing Substances	0	0.0%	3	4.3%	0	0.0%	3	2.7%
Poisonous and Infectious Substances	1	3.0%	1	1.4%	0	0.0%	2	1.8%
Radioactive	0	0.0%	0	0.0%	0	0.0%	0	0.0%
Corrosives	4	12.1%	2	2.9%	1	10.0%	7	6.2%
Miscellaneous Dangerous Goods	2	6.1%	3	4.3%	0	0.0%	5	4.4%
Unknown	5	15.2%	23	32.9%	3	30.0%	31	27.4%
Total	33	100.0%	70	100.0%	10	100.0%	113	100.0%
Nonfatal Crashes								
Explosives	4	1.3%	71	3.7%	3	1.6%	78	3.2%
Gases	28	9.1%	282	14.7%	29	15.4%	339	14.1%
Flammable Liquids	141	45.8%	659	34.4%	56	29.8%	856	35.5%
Flammable Solids	4	1.3%	17	0.9%	2	1.1%	23	1.0%
Oxidizing Substances	2	0.6%	13	0.7%	4	2.1%	19	0.8%
Poisonous and Infectious Substances	4	1.3%	10	0.5%	0	0.0%	14	0.6%
Radioactive	0	0.0%	6	0.3%	1	0.5%	7	0.3%
Corrosives	22	7.1%	94	4.9%	9	4.8%	125	5.2%
Miscellaneous Dangerous Goods	23	7.5%	127	6.6%	5	2.7%	155	6.4%
Unknown	80	26.0%	634	33.1%	79	42.0%	793	32.9%
Total	308	100.0%	1,913	100.0%	188	100.0%	2,409	100.0%

Note: A large truck is defined here as a truck, used for commercial purposes, with a gross vehicle weight rating (GVWR) or gross combination weight rating greater than 10,000 pounds.

Source: Federal Motor Carrier Safety Administration, MCMIS Crash File.

Table 42. Large Trucks in Crashes by Initial Point of Impact

Initial Point of Impact	Fatal		Injury		Property Damage Only	
	Number	Percent	Number	Percent	Number	Percent
Front	3,030	62.3%	36,000	41.9%	107,000	32.9%
Rear	866	17.8%	13,000	15.2%	53,000	16.4%
Left	417	8.6%	12,000	14.2%	55,000	17.1%
Right	298	6.1%	16,000	18.8%	84,000	25.8%
Non-Collision	114	2.3%	8,000	8.7%	20,000	6.3%
Other	84	1.7%	1,000	1.2%	5,000	1.5%
Unknown	53	1.1%				
Total	4,862	100.0%	87,000	100.0%	324,000	100.0%

Note: A large truck is defined as a truck with a gross vehicle weight rating (GVWR) greater than 10,000 pounds.

Sources: Fatal Crashes: National Highway Traffic Safety Administration, Fatality Analysis Reporting System (FARS). Injury and Property Damage Only Crashes: National Highway Traffic Safety Administration, General Estimates System (GES).

Table 43. Large Trucks in Crashes by Most Harmful Event for the Large Truck

Most Harmful Event	Fatal		Injury		Property Damage Only	
	Number	Percent	Number	Percent	Number	Percent
Collision with Vehicle in Transport	3,754	77.2%	69,000	79.2%	225,000	69.4%
Collision with Fixed Object	175	3.6%	4,000	4.4%	30,000	9.2%
Collision with Pedestrian	299	6.1%	2,000	2.8%	*	*
Overturn (Rollover)	325	6.7%	8,000	8.8%	6,000	1.7%
Collision with Pedalcycle	76	1.6%	1,000	0.8%	*	*
Collision with Parked Motor Vehicle	16	0.3%	1,000	1.2%	39,000	11.9%
Collision with Train	14	0.3%	*	0.1%	*	*
Collision with Other Object	20	0.4%	*	0.3%	3,000	1.0%
Collision with Animal	5	0.1%	*	*	5,000	1.7%
Jackknife			*	0.6%	2,000	0.6%
Explosion/Fire	104	2.1%	*	0.3%	1,000	0.4%
Other	35	0.7%	1,000	1.7%	13,000	4.1%
Unknown	39	0.8%				
Total	4,862	100.0%	87,000	100.0%	324,000	100.0%

*Less than 500 or less than 0.05 percent.

Note: A large truck is defined as a truck with a gross vehicle weight rating (GVWR) greater than 10,000 pounds.

Sources: Fatal Crashes: National Highway Traffic Safety Administration, Fatality Analysis Reporting System (FARS). Injury and Property Damage Only Crashes: National Highway Traffic Safety Administration, General Estimates System (GES).

Table 44. Large Trucks in Crashes by Jackknife Occurrence

Jackknife	Fatal		Injury		Property Damage Only	
	Number	Percent	Number	Percent	Number	Percent
Yes	280	5.8%	2,000	2.2%	3,000	1.0%
No	4,582	94.2%	85,000	97.8%	321,000	99.0%
Total	4,862	100.0%	87,000	100.0%	324,000	100.0%

Note: A large truck is defined as a truck with a gross vehicle weight rating (GVWR) greater than 10,000 pounds.

Sources: Fatal Crashes: National Highway Traffic Safety Administration, Fatality Analysis Reporting System (FARS). Injury and Property Damage Only Crashes: National Highway Traffic Safety Administration, General Estimates System (GES).

Table 45. Large Trucks in Crashes with Passenger Vehicles by Crash Type and Severity

Crash Type	Fatal		Injury		Property Damage Only	
	Number	Percent	Number	Percent	Number	Percent
Large Truck Rear-Ending Passenger Vehicle	143	5.4%	10,000	19.5%	30,000	14.9%
Passenger Vehicle Rear-Ending Large Truck	448	16.8%	8,000	15.3%	24,000	11.9%
Large Truck Striking Passenger Vehicle (Other)	1,022	38.4%	14,000	28.0%	82,000	41.2%
Passenger Vehicle Striking Large Truck (Other)	897	33.7%	16,000	30.2%	53,000	26.7%
Vehicles Striking Each Other	108	4.1%	2,000	4.4%	4,000	2.1%
Other Collision	45	1.7%	1,000	2.7%	6,000	3.2%
Total	2,663	100.0%	52,000	100.0%	199,000	100.0%

Note: A large truck is defined as a truck with a gross vehicle weight rating (GVWR) greater than 10,000 pounds.
 Sources: Fatal Crashes: National Highway Traffic Safety Administration, Fatality Analysis Reporting System (FARS). Injury and Property Damage Only Crashes: National Highway Traffic Safety Administration, General Estimates System (GES).

Table 46. Large Trucks in Fatal Crashes with Passenger Vehicles by Crash Type and Driver-Related Factors Recorded

Crash Type	Fatal Crashes	Crashes with Driver-Related Factors Recorded			
		For Large Truck		For Passenger Vehicle	
		Number	Percent	Number	Percent
Large Truck Rear-Ending Passenger Vehicle	143	94	65.7%	84	58.7%
Passenger Vehicle Rear-Ending Large Truck	448	116	25.9%	397	88.6%
Large Truck Striking Passenger Vehicle (Other)	1,022	359	35.1%	789	77.2%
Passenger Vehicle Striking Large Truck (Other)	897	218	24.3%	805	89.7%
Vehicles Striking Each Other	108	22	20.4%	88	81.5%
Other Collision	45	13	28.9%	36	80.0%
Total	2,663	822	30.9%	2,199	82.6%

Note: A large truck is defined as a truck with a gross vehicle weight rating (GVWR) greater than 10,000 pounds.
 Source: National Highway Traffic Safety Administration, Fatality Analysis Reporting System (FARS).

People

This chapter contains information on drivers of large trucks in fatal, injury, and property damage only crashes and on people killed or injured in large truck crashes. Some statistics are also listed for passenger vehicle drivers in order to make comparisons. It is important to note that the number of large truck drivers in crashes is not exactly equal to the number of large trucks in crashes, because no driver information is provided for some crashes. Below is a summary of some of the information in this section:

- ◆ Fatalities in crashes involving large trucks made up 12 percent of all fatalities in motor vehicle crashes in 2004.
- ◆ Injuries in large truck crashes made up 4 percent of all injuries in motor vehicle crashes in 2004.
- ◆ Of the 4,799 drivers of large trucks involved in fatal crashes, 269 (about 6 percent) were 25 years of age or younger, and 148 (about 3 percent) were 66 years of age or older. In comparison, 14,290 (30 percent) of the 47,610 drivers of passenger vehicles in fatal crashes were 25 years of age or younger, and 5,449 (about 11 percent) were 66 years of age or older.
- ◆ About 2 percent of all the drivers of large trucks involved in fatal crashes were female, as compared with 31 percent of all drivers of passenger vehicles involved in fatal crashes.
- ◆ One or more driver-related factors were recorded for 64 percent of the drivers of large trucks involved in single-vehicle fatal crashes but only for 35 percent of the drivers of large trucks involved in multiple-vehicle fatal crashes.
- ◆ Of the 4,799 drivers of large trucks involved in fatal crashes, 684 (14 percent) were not wearing a safety belt at the time of the crash; of those, 21 percent were completely or partially ejected from the vehicle.

Table 47. Persons Killed and Injured in Crashes Involving Large Trucks

Person Type	Single-Vehicle Crashes		Multiple-Vehicle Crashes		Total	
	Number	Percent	Number	Percent	Number	Percent
Persons Killed						
Driver of Large Truck	391	48.2%	243	5.5%	634	12.2%
Driver of Other Motor Vehicle	0	0.0%	2,900	66.2%	2,900	55.9%
Passenger of Large Truck in Transport	74	9.1%	52	1.2%	126	2.4%
Passenger of Other Motor Vehicle in Transport	0	0.0%	1,103	25.2%	1,103	21.3%
Occupant of Motor Vehicle Not in Transport	7	0.9%	0	0.0%	7	0.1%
Occupant of Non-Motor Vehicle Transport Device ^a	4	0.5%	0	0.0%	4	0.1%
Pedestrian	254	31.3%	75	1.7%	329	6.3%
Bicyclist	74	9.1%	3	0.1%	77	1.5%
Other Cyclist	0	0.0%	0	0.0%	0	0.0%
Other Pedestrian	6	0.7%	0	0.0%	6	0.1%
Unknown Occupant Type in Motor Vehicle in Transport	1	0.1%	3	0.1%	4	0.1%
Total	811	100.0%	4,379	100.0%	5,190	100.0%
Persons Injured						
Driver of Large Truck	11,000	67.5%	12,000	11.9%	23,000	20.0%
Driver of Other Motor Vehicle	*	*	61,000	61.5%	61,000	52.5%
Passenger of Large Truck in Transport	2,000	11.7%	2,000	2.1%	4,000	3.5%
Passenger of Other Motor Vehicle in Transport	*	*	24,000	24.3%	24,000	20.8%
Occupant of Motor Vehicle Not in Transport	*	1.7%	*	0.1%	*	0.3%
Occupant of a Non-Motor Vehicle Transport Device ^a	*	0.1%	*	*	*	*
Pedestrian	3,000	14.9%	*	0.1%	3,000	2.2%
Bicyclist	1,000	4.1%	*	*	1,000	0.6%
Unknown Occupant Type in Motor Vehicle in Transport	*	*	*	*	*	*
Total	17,000	100.0%	99,000	100.0%	116,000	100.0%

^aRefers to a person riding in an animal-drawn conveyance or on an animal, or an occupant of a railway train, etc.

*Less than 500 or less than 0.05 percent.

Note: A large truck is defined as a truck with a gross vehicle weight rating (GVWR) greater than 10,000 pounds.

Sources: Persons Killed: National Highway Traffic Safety Administration, Fatality Analysis Reporting System (FARS).

Persons Injured: National Highway Traffic Safety Administration, General Estimates System (GES).

Table 48. Persons Killed in Crashes Involving Large Trucks by Age and Sex

Age Group (Years)	Male		Female		Unknown		Total	
	Number	Percent	Number	Percent	Number	Percent	Number	Percent
17 and under	259	7.2%	202	12.5%	0	0.0%	461	8.9%
18 - 25	609	17.0%	264	16.4%	0	0.0%	873	16.8%
26 - 35	580	16.2%	196	12.1%	0	0.0%	776	15.0%
36 - 45	660	18.5%	230	14.3%	0	0.0%	890	17.1%
46 - 55	625	17.5%	201	12.5%	0	0.0%	826	15.9%
56 - 65	374	10.5%	171	10.6%	0	0.0%	545	10.5%
66 - 75	223	6.2%	152	9.4%	0	0.0%	375	7.2%
76 and over	237	6.6%	192	11.9%	0	0.0%	429	8.3%
Unknown	9	0.3%	6	0.4%	0	0.0%	15	0.3%
Total	3,576	100.0%	1,614	100.0%	0	0.0%	5,190	100.0%

Note: A large truck is defined as a truck with a gross vehicle weight rating (GVWR) greater than 10,000 pounds.
 Source: National Highway Traffic Safety Administration, Fatality Analysis Reporting System (FARS).

Table 49. Persons Killed in Crashes Involving Passenger Vehicles by Age and Sex

Age Group (Years)	Male		Female		Unknown		Total	
	Number	Percent	Number	Percent	Number	Percent	Number	Percent
17 and under	2,560	9.9%	1,801	14.1%	0	0.0%	4,361	11.3%
18 - 25	6,202	24.1%	2,337	18.3%	1	16.7%	8,540	22.2%
26 - 35	4,161	16.1%	1,625	12.7%	1	16.7%	5,787	15.0%
36 - 45	3,862	15.0%	1,693	13.3%	1	16.7%	5,556	14.4%
46 - 55	3,420	13.3%	1,545	12.1%	0	0.0%	4,965	12.9%
56 - 65	2,114	8.2%	1,182	9.3%	0	0.0%	3,296	8.6%
66 - 75	1,487	5.8%	1,032	8.1%	0	0.0%	2,519	6.5%
76 and over	1,889	7.3%	1,506	11.8%	0	0.0%	3,395	8.8%
Unknown	80	0.3%	29	0.2%	3	50.0%	112	0.3%
Total	25,775	100.0%	12,750	100.0%	6	100.0%	38,531	100.0%

Note: A passenger vehicle is defined as a car or light truck (including pickups, vans, and sport utility vehicles).
 Source: National Highway Traffic Safety Administration, Fatality Analysis Reporting System (FARS).

Table 50. Persons Injured in Crashes Involving Large Trucks by Age and Sex

Age Group (Years)	Male		Female		Total	
	Number	Percent	Number	Percent	Number	Percent
17 and under	6,000	9.0%	6,000	11.9%	12,000	10.2%
18 - 25	13,000	19.0%	9,000	19.3%	22,000	19.1%
26 - 35	12,000	17.8%	8,000	17.4%	20,000	17.6%
36 - 45	16,000	22.9%	9,000	18.1%	24,000	20.9%
46 - 55	11,000	16.2%	8,000	15.9%	19,000	16.1%
56 - 65	6,000	8.8%	5,000	9.5%	11,000	9.1%
66 - 75	2,000	3.4%	2,000	4.0%	4,000	3.6%
76 and over	2,000	2.8%	2,000	4.1%	4,000	3.4%
Total	68,000	100.0%	48,000	100.0%	116,000	100.0%

Note: A large truck is defined as a truck with a gross vehicle weight rating (GVWR) greater than 10,000 pounds.
 Source: National Highway Traffic Safety Administration, General Estimates System (GES).

Table 51. Persons Injured in Crashes Involving Passenger Vehicles by Age and Sex

Age Group (Years)	Male		Female		Total	
	Number	Percent	Number	Percent	Number	Percent
17 and under	207,000	16.4%	244,000	16.7%	451,000	16.6%
18 - 25	300,000	23.8%	324,000	22.2%	623,000	22.9%
26 - 35	230,000	18.2%	235,000	16.2%	465,000	17.1%
36 - 45	207,000	16.4%	236,000	16.2%	443,000	16.3%
46 - 55	153,000	12.1%	196,000	13.5%	349,000	12.8%
56 - 65	84,000	6.7%	115,000	7.9%	199,000	7.3%
66 - 75	44,000	3.5%	63,000	4.3%	107,000	3.9%
76 and over	37,000	2.9%	44,000	3.0%	81,000	3.0%
Total	1,262,000	100.0%	1,456,000	100.0%	2,718,000	100.0%

Note: A passenger vehicle is defined as a car or light truck (including pickups, vans, and sport utility vehicles).
 Source: National Highway Traffic Safety Administration, General Estimates System (GES).

Table 52. Persons Killed and Injured in Crashes Involving Large Trucks by Time of Day

Time of Day	Persons Killed		Persons Inured	
	Number	Percent	Number	Percent
12am - 3am	352	6.8%	5,000	3.9%
3am - 6am	460	8.9%	5,000	4.2%
6am - 9am	725	14.0%	19,000	16.5%
9am - 12pm	915	17.6%	23,000	19.9%
12pm - 3pm	990	19.1%	25,000	21.9%
3pm - 6pm	830	16.0%	24,000	20.3%
6pm - 9pm	516	9.9%	9,000	7.4%
9pm - 12am	401	7.7%	7,000	6.0%
Unknown	1	*		
<i>Daytime (6am - 6pm)</i>	<i>3,460</i>	<i>66.7%</i>	<i>91,000</i>	<i>78.5%</i>
<i>Nighttime (6pm - 6am)</i>	<i>1,729</i>	<i>33.3%</i>	<i>25,000</i>	<i>21.5%</i>
Total	5,190	100.0%	116,000	100.0%

*Less than 0.05 percent.

Note: A large truck is defined as a truck with a gross vehicle weight rating (GVWR) greater than 10,000 pounds.

Sources: Persons Killed: National Highway Traffic Safety Administration, Fatality Analysis Reporting System (FARS).

Persons Injured: National Highway Traffic Safety Administration, General Estimates System (GES).

Table 53. Drivers of Large Trucks in Crashes by Age, Sex, and Crash Severity

Age Group (Years)	Male		Female		Unknown		Total	
	Number	Percent	Number	Percent	Number	Percent	Number	Percent
Fatal Crashes								
25 and Under	261	5.6%	8	6.7%	0	0.0%	269	5.6%
26 - 35	922	19.8%	23	19.3%	0	0.0%	945	19.7%
36 - 45	1,421	30.5%	37	31.1%	0	0.0%	1,458	30.4%
46 - 55	1,235	26.5%	43	36.1%	0	0.0%	1,278	26.6%
56 - 65	674	14.5%	4	3.4%	0	0.0%	678	14.1%
66 - 75	133	2.9%	3	2.5%	0	0.0%	136	2.8%
76 and Over	11	0.2%	1	0.8%	0	0.0%	12	0.3%
Unknown	3	0.1%	0	0.0%	20	100.0%	23	0.5%
Total	4,660	100.0%	119	100.0%	20	100.0%	4,799	100.0%
Injury Crashes								
25 and Under	9,000	11.5%	2,000	44.9%			11,000	13.1%
26 - 35	18,000	22.0%	1,000	31.3%			19,000	22.5%
36 - 45	24,000	29.6%	1,000	12.7%			25,000	28.7%
46 - 55	19,000	22.9%	*	7.4%			19,000	22.1%
56 - 65	9,000	11.0%	*	3.5%			9,000	10.6%
66 - 75	2,000	2.5%	*	0.2%			2,000	2.4%
76 and Over	*	0.5%	*	*			*	0.5%
Total	82,000	100.0%	4,000	100.0%			86,000	100.0%
Property Damage Only Crashes								
25 and Under	49,000	16.7%	20,000	64.6%			69,000	21.4%
26 - 35	73,000	25.0%	3,000	10.2%			76,000	23.5%
36 - 45	76,000	26.2%	5,000	16.5%			81,000	25.3%
46 - 55	64,000	22.1%	2,000	5.4%			66,000	20.5%
56 - 65	25,000	8.6%	1,000	2.6%			26,000	8.0%
66 - 75	3,000	1.1%	*	0.7%			3,000	1.0%
76 and Over	1,000	0.3%	*	*			1,000	0.2%
Total	291,000	100.0%	32,000	100.0%			322,000	100.0%

*Less than 500 or less than 0.05 percent.

Note: A large truck is defined as a truck with a gross vehicle weight rating (GVWR) greater than 10,000 pounds.

Sources: Fatal Crashes: National Highway Traffic Safety Administration, Fatality Analysis Reporting System (FARS). Injury and Property Damage Only Crashes: National Highway Traffic Safety Administration, General Estimates System (GES).

Table 54. Drivers of Passenger Vehicles in Crashes by Age, Sex, and Crash Severity

Age Group (Years)	Male		Female		Unknown		Total	
	Number	Percent	Number	Percent	Number	Percent	Number	Percent
Fatal Crashes								
25 and Under	10,108	31.0%	4,182	28.2%	0	0.0%	14,290	30.0%
26 - 35	6,141	18.9%	2,712	18.3%	1	0.4%	8,854	18.6%
36 - 45	5,551	17.0%	2,569	17.3%	1	0.4%	8,121	17.1%
46 - 55	4,287	13.2%	2,130	14.4%	0	0.0%	6,417	13.5%
56 - 65	2,784	8.5%	1,357	9.2%	0	0.0%	4,141	8.7%
66 - 75	1,770	5.4%	881	5.9%	0	0.0%	2,651	5.6%
76 and Over	1,838	5.6%	960	6.5%	0	0.0%	2,798	5.9%
Unknown	95	0.3%	18	0.1%	225	99.1%	338	0.7%
Total	32,574	100.0%	14,809	100.0%	227	100.0%	47,610	100.0%
Injury Crashes								
25 and Under	546,000	31.0%	454,000	30.8%			999,000	30.9%
26 - 35	352,000	20.0%	286,000	19.4%			638,000	19.8%
36 - 45	321,000	18.2%	280,000	19.1%			601,000	18.6%
46 - 55	256,000	14.6%	226,000	15.4%			482,000	14.9%
56 - 65	146,000	8.3%	122,000	8.3%			269,000	8.3%
66 - 75	75,000	4.3%	61,000	4.1%			136,000	4.2%
76 and Over	63,000	3.6%	42,000	2.8%			104,000	3.2%
Total	1,759,000	100.0%	1,471,000	100.0%			3,230,000	100.0%
Property Damage Only Crashes								
25 and Under	1,342,000	32.9%	978,000	32.6%			2,320,000	32.8%
26 - 35	824,000	20.2%	612,000	20.4%			1,436,000	20.3%
36 - 45	714,000	17.5%	562,000	18.8%			1,276,000	18.0%
46 - 55	592,000	14.5%	428,000	14.3%			1,020,000	14.4%
56 - 65	315,000	7.7%	232,000	7.7%			547,000	7.7%
66 - 75	181,000	4.4%	112,000	3.7%			293,000	4.1%
76 and Over	117,000	2.9%	74,000	2.5%			191,000	2.7%
Total	4,085,000	100.0%	2,998,000	100.0%			7,083,000	100.0%

Note: A large truck is defined as a truck with a gross vehicle weight rating (GVWR) greater than 10,000 pounds.
 Sources: Fatal Crashes: National Highway Traffic Safety Administration, Fatality Analysis Reporting System (FARS). Injury and Property Damage Only Crashes: National Highway Traffic Safety Administration, General Estimates System (GES).

Table 55. Drivers of Large Trucks in Fatal Crashes by Restraint Use and Ejection from the Vehicle

Restraint Use	Ejection from the Vehicle								Total	
	Not Ejected		Totally Ejected		Partially Ejected		Unknown			
	Number	Percent	Number	Percent	Number	Percent	Number	Percent	Number	Percent
None	538	11.7%	103	79.8%	41	63.1%	2	28.6%	684	14.3%
Shoulder Belt	11	0.2%	0	0.0%	0	0.0%	0	0.0%	11	0.2%
Lap Belt	202	4.4%	0	0.0%	2	3.1%	0	0.0%	204	4.3%
Lap and Shoulder	3,450	75.0%	10	7.8%	15	23.1%	2	28.6%	3,477	72.5%
Type Unknown	28	0.6%	0	0.0%	0	0.0%	0	0.0%	28	0.6%
Used Improperly	2	*	0	0.0%	0	0.0%	0	0.0%	2	*
Unknown	367	8.0%	16	12.4%	7	10.8%	3	42.9%	393	8.2%
Total	4,598	100.0%	129	100.0%	65	100.0%	7	100.0%	4,799	100.0%

*Less than 0.05 percent.

Note: A large truck is defined as a truck with a gross vehicle weight rating (GVWR) greater than 10,000 pounds.

Source: National Highway Traffic Safety Administration, Fatality Analysis Reporting System (FARS).

**Table 56. Drivers of Large Trucks in Fatal Crashes
by Commercial Drivers License (CDL) Status and License Compliance**

CDL Status	Number	Percent	License Compliance	Number	Percent
Valid	4,162	86.7%	Valid License for Class of Vehicle	4,476	93.3%
No CDL	411	8.6%	Not Licensed	12	0.3%
Suspended	47	1.0%	No License Required for Class of Vehicle	0	0.0%
Revoked, Expired, Canceled	26	0.5%	No Valid License for Class of Vehicle	139	2.9%
Other Not Valid	21	0.4%	Unknown if Required for Class of Vehicle	36	0.8%
Unknown	132	2.8%	Unknown	136	2.8%
Total	4,799	100.0%	Total	4,799	100.0%

Note: A large truck is defined as a truck with a gross vehicle weight rating (GVWR) greater than 10,000 pounds.
Sources: National Highway Traffic Safety Administration, Fatality Analysis Reporting System (FARS).

Table 57. Drivers of Large Trucks in Fatal Crashes by Driver-Related Factors and Violations Recorded

Driver-Related Factors	Single-Vehicle Crashes		Multiple-Vehicle Crashes		Total	
	Number	Percent	Number	Percent	Number	Percent
Not in lane	160	20.8%	345	8.6%	505	10.5%
Driving too fast for conditions or in excess of posted speed limit	108	14.0%	279	6.9%	387	8.1%
Inattentive (talking, eating, etc.)	82	10.6%	157	3.9%	239	5.0%
Failure to yield right-of-way	37	4.8%	184	4.6%	221	4.6%
Erratic or reckless driving	37	4.8%	107	2.7%	144	3.0%
Failure to obey traffic signs	8	1.0%	120	3.0%	128	2.7%
Swerving or sliding due to water, snow, slush, oil, wet leaves, etc.	14	1.8%	90	2.2%	104	2.2%
Vision obscured by weather	4	0.5%	95	2.4%	99	2.1%
Following improperly	2	0.3%	83	2.1%	85	1.8%
Other non-moving traffic violation	14	1.8%	68	1.7%	82	1.7%
Overcorrecting	47	6.1%	23	0.6%	70	1.5%
Drowsy, fatigued	33	4.3%	33	0.8%	66	1.4%
Making improper turn	26	3.4%	34	0.8%	60	1.3%
Swerving to avoid vehicle in road	3	0.4%	55	1.4%	58	1.2%
Non-traffic violation charged (manslaughter or other homicide offense)	4	0.5%	50	1.2%	54	1.1%
Operating without required equipment	8	1.0%	37	0.9%	45	0.9%
Illegal drugs	16	2.1%	29	0.7%	45	0.9%
Stopped in roadway	0	0.0%	37	0.9%	37	0.8%
Improper lane change	6	0.8%	30	0.7%	36	0.8%
Hit and run	14	1.8%	20	0.5%	34	0.7%
Improper loading	7	0.9%	17	0.4%	24	0.5%
Hauling hazardous cargo improperly	2	0.3%	21	0.5%	23	0.5%
Cellular phone in use	3	0.4%	6	0.1%	9	0.2%
Driver-Related Factor(s) Recorded	496	64.3%	1,393	34.6%	1,889	39.4%
No Driver-Related Factors Recorded	275	35.7%	2,635	65.4%	2,910	60.6%
Total	771	100.0%	4,028	100.0%	4,799	100.0%
Violation(s) Recorded	66	8.6%	478	11.9%	544	11.3%
No Violations Recorded	705	91.4%	3,550	88.1%	4,255	88.7%
Total	771	100.0%	4,028	100.0%	4,799	100.0%

Note: A large truck is defined as a truck with a gross vehicle weight rating (GVWR) greater than 10,000 pounds.

Source: National Highway Traffic Safety Administration, Fatality Analysis Reporting System (FARS).

