

MOUNTAIN-PLAINS INFORMATION OFFICE  
Kansas City, Mo.

**For release: August 15, 2012**

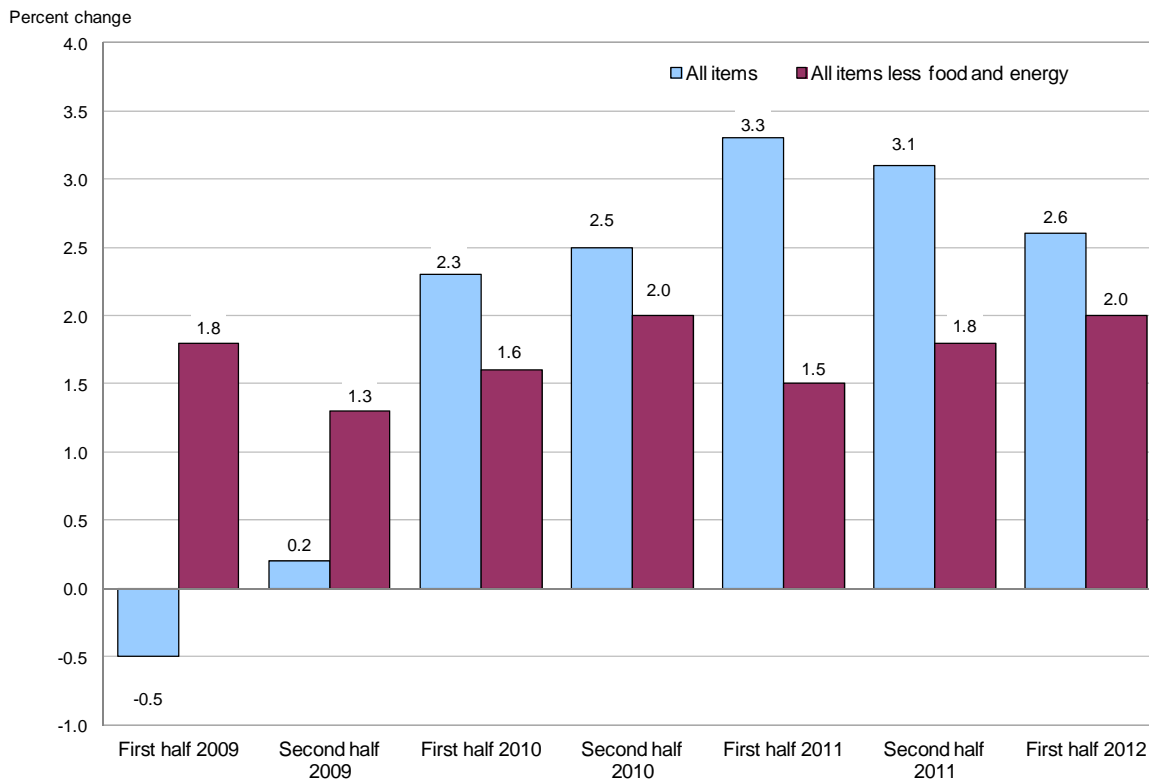
12-1697-KAN

Technical information : (816) 285-7000 • BLSInfoKansasCity@bls.gov • www.bls.gov/ro7  
Media contact : (816) 285-7002 • BLSInfoKansasCity@bls.gov

**CONSUMER PRICE INDEX (CPI) FOR ST. LOUIS**  
**Prices increased 2.6 percent from the first half of 2011 to the first half of 2012**

The Consumer Price Index for All Urban Consumers (CPI-U) for the St. Louis, Mo.-Ill., metropolitan area rose 2.6 percent from the first half of 2011 to the first half of 2012, the U.S. Bureau of Labor Statistics reported today. Regional Commissioner Stanley W. Suchman noted that the increase was broad-based with higher prices for shelter and food having the largest upward impact on the index. Costs for energy rose 2.0 percent, food prices were up 5.3 percent, and the all items less food and energy index advanced 2.0 percent.

Chart 1. Over-the-year percent changes in consumer price indexes, St. Louis, first half 2009–first half 2012



SOURCE: U.S. Bureau of Labor Statistics

## **Food**

Food prices rose 5.3 percent from the first half of 2011 to the first half of 2012, more than twice the 2.5-percent increase registered in the same period one year ago. Costs for food at home advanced 6.8 percent, the largest over-the-year gain since 1990, and accounted for over three-fourths of the increase in the food component. Costs for food away from home were up 3.7 percent over the year.

## **Energy**

The energy index increased 2.0 percent from the first half of 2011 to the first half of 2012, following a sharp advance of 21.3 percent in the same period one year ago. An increase of 3.2 percent in motor fuel prices had the greatest impact on the energy component, though this was the smallest annual gain since 2007. A decline in motor fuel costs in the earlier half of the period helped to offset rising costs in the most recent six-month period. Prices for electricity were up 3.9 percent over the year, following an increase of 17.6 percent in the same period a year ago. Utility (piped) gas service costs declined 4.2 percent over the year.

## **All items less food and energy**

The index for all items less food and energy rose 2.0 percent from the first half of 2011 to the first half of 2012. Higher costs for shelter, up 2.9 percent, led the advance. Other components that contributed to the increase included apparel (6.7 percent), medical care (2.5 percent), and education and communication (1.7 percent). In contrast, the index for household furnishings and operations decreased 1.7 percent over the year.

The St. Louis CPI-U stood at 213.921 for the first half of 2012. This means that a market basket of goods and services that cost \$100.00 in 1982-84 cost \$213.92 in the first half of 2012. Because metropolitan area CPI data are not adjusted for seasonal price variation, consumers and businesses should be cautious in drawing conclusions about long-term retail price trends from short-term changes in the metropolitan area indexes.

## **CPI-W**

The Consumer Price Index for Urban Wage Earners and Clerical Workers (CPI-W) for the St. Louis, Mo.-Ill., metropolitan area for the first half of 2012 was 214.712. The CPI-W increased 2.7 percent from the first half of 2011 to the first half of 2012.

## **Technical Note**

The Consumer Price Index (CPI) is a measure of the average change in prices over time in a fixed market basket of goods and services. The Bureau of Labor Statistics publishes CPIs for two population groups: (1) a CPI for All Urban Consumers (CPI-U) which covers approximately 88 percent of the total population and (2) a CPI for Urban Wage Earners and Clerical Workers (CPI-W) which covers approximately 29 percent of the total population. The CPI-U includes, in addition to wage earners and clerical workers, groups such as professional, managerial, and technical workers, the self-employed, short-term workers, the unemployed, and retirees and others not in the labor force.

The CPI is based on prices of food, clothing, shelter, and fuels, transportation fares, charges for doctors' and dentists' services, drugs, and the other goods and services that people buy for day-to-day living. Each month, prices are collected in 87 urban areas across the country from about 4,000 housing units and approximately 26,000 retail establishments--department stores, supermarkets, hospitals, filling

stations, and other types of stores and service establishments. All taxes directly associated with the purchase and use of items are included in the index.

The index measures price changes from a designated reference date (1982-84) that equals 100.0. An increase of 16.5 percent, for example, is shown as 116.5. This change can also be expressed in dollars as follows: the price of a base period "market basket" of goods and services in the CPI has risen from \$10 in 1982-84 to \$11.65. For further details see the CPI home page on the Internet at [www.bls.gov/cpi](http://www.bls.gov/cpi) and the BLS Handbook of Methods, Chapter 17, The Consumer Price Index, available on the Internet at [www.bls.gov/opub/hom/homch17\\_a.htm](http://www.bls.gov/opub/hom/homch17_a.htm).

In calculating the index, price changes for the various items in each location are averaged together with weights that represent their importance in the spending of the appropriate population group. Local data are then combined to obtain a U.S. city average. Because the sample size of a local area is smaller, the local area index is subject to substantially more sampling and other measurement error than the national index. In addition, local indexes are not adjusted for seasonal influences. As a result, local area indexes show greater volatility than the national index, although their long-term trends are quite similar. **NOTE: Area indexes do not measure differences in the level of prices between areas; they only measure the average change in prices for each area since the base period.**

The St. Louis, Mo.-Ill., Metropolitan Statistical Area includes Bond, Calhoun, Clinton, Jersey, Macoupin, Madison, Monroe, and St. Clair Counties in Illinois; and Franklin, Jefferson, Lincoln, St. Charles, St. Louis, Warren, and Washington Counties and St. Louis City in Missouri.

For personal assistance or further information on Consumer Price Indexes, as well as other Bureau products, contact the Mountain-Plains Information Office at (816) 285-7000 from 9:00 a.m. to 12:00 p.m. and 1:00 p.m. to 4:00 p.m. CT.

---

Information in this release will be made available to sensory impaired individuals upon request.  
Voice phone: 202-691-5200; TDD message referral phone number (Federal Relay Service):  
1-800-877-8339.

**Table 1. Consumer Price Index for All Urban Consumers (CPI-U): Indexes for semiannual averages and percent changes for selected periods**

**St. Louis, MO-IL** (1982-84=100 unless otherwise noted)

Item and Group	Semiannual average indexes			Percent change to 1st half 2012 from—	
	1st half 2011	2nd half 2011	1st half 2012	1st half 2011	2nd half 2011
<b>Expenditure category</b>					
All items .....	208.586	210.966	213.921	2.6	1.4
All items (1967=100) .....	619.534	626.605	635.381	-	-
Food and beverages .....	217.627	223.076	228.571	5.0	2.5
Food .....	215.813	221.483	227.295	5.3	2.6
Food at home .....	204.553	212.896	218.434	6.8	2.6
Food away from home .....	234.196	235.345	242.823	3.7	3.2
Alcoholic beverages .....	219.048	220.316	220.374	.6	.0
Housing .....	193.431	196.781	197.935	2.3	.6
Shelter .....	219.639	221.919	225.997	2.9	1.8
Rent of primary residence <sup>1</sup> .....	200.001	201.612	205.858	2.9	2.1
Owners' equivalent rent of residences <sup>1 2</sup> .....	228.555	230.619	235.431	3.0	2.1
Owners' equivalent rent of primary residence <sup>1 2</sup> .....	228.555	230.619	235.431	3.0	2.1
Fuels and utilities .....	196.664	207.664	198.473	.9	-4.4
Household energy .....	172.089	192.236	173.212	.7	-9.9
Energy services <sup>1</sup> .....	175.790	196.814	177.075	.7	-10.0
Electricity <sup>1</sup> .....	163.341	195.395	169.775	3.9	-13.1
Utility (piped) gas service <sup>1</sup> .....	169.996	166.670	162.825	-4.2	-2.3
Household furnishings and operations .....	127.885	127.532	125.689	-1.7	-1.4
Apparel .....	146.122	145.500	155.952	6.7	7.2
Transportation .....	200.219	198.548	203.881	1.8	2.7
Private transportation .....	201.261	199.352	204.851	1.8	2.8
Motor fuel .....	328.092	312.478	338.441	3.2	8.3
Gasoline (all types) .....	323.654	307.417	333.621	3.1	8.5
Gasoline, unleaded regular <sup>3</sup> .....	315.661	299.537	325.377	3.1	8.6
Gasoline, unleaded midgrade <sup>3 4</sup> .....	368.964	350.570	380.101	3.0	8.4
Gasoline, unleaded premium <sup>3</sup> .....	311.505	297.745	321.379	3.2	7.9
Medical care .....	370.708	377.000	379.807	2.5	.7
Recreation <sup>5</sup> .....	114.844	115.271	116.462	1.4	1.0
Education and communication <sup>5</sup> .....	137.648	139.803	139.986	1.7	.1
Other goods and services .....	301.051	302.680	302.801	.6	.0
<b>Commodity and service group</b>					
All items .....	208.586	210.966	213.921	2.6	1.4
Commodities .....	183.952	185.082	189.901	3.2	2.6
Commodities less food and beverages .....	164.815	164.149	168.681	2.3	2.8
Nondurables less food and beverages .....	224.752	221.510	231.294	2.9	4.4
Durables .....	109.501	111.235	111.121	1.5	-1.1
Services .....	235.258	238.829	240.229	2.1	.6
<b>Special aggregate indexes</b>					
All items less medical care .....	200.489	202.694	205.627	2.6	1.4
All items less shelter .....	206.918	209.233	211.890	2.4	1.3
Commodities less food .....	167.728	167.102	171.536	2.3	2.7
Nondurables .....	222.478	223.227	230.799	3.7	3.4
Nondurables less food .....	226.098	223.051	232.311	2.7	4.2
Services less rent of shelter <sup>2</sup> .....	258.190	262.836	261.360	1.2	-.6
Services less medical care services .....	223.041	226.353	227.562	2.0	.5
Energy .....	240.127	244.408	244.876	2.0	.2
All items less energy .....	208.259	210.797	213.533	2.5	1.3
All items less food and energy .....	207.266	209.264	211.466	2.0	1.1

<sup>1</sup> This index series was calculated using a Laspeyres estimator. All other item stratum index series were calculated using a geometric means estimator.

<sup>2</sup> Index is on a November 1982=100 base.

<sup>3</sup> Special index based on a substantially smaller sample.

<sup>4</sup> Indexes on a December 1993=100 base.

<sup>5</sup> Indexes on a December 1997=100 base.

- Data not available.

**Table 2. Consumer Price Index for Urban Wage Earners and Clerical Workers (CPI-W):Indexes for semiannual averages and percent changes for selected periods**

**St. Louis, MO-IL** (1982-84=100 unless otherwise noted)

Item and Group	Semiannual average indexes			Percent change to 1st half 2012 from—	
	1st half 2011	2nd half 2011	1st half 2012	1st half 2011	2nd half 2011
<b>Expenditure category</b>					
All items .....	209.150	211.537	214.712	2.7	1.5
All items (1967=100) .....	615.331	622.354	631.694	-	-
Food and beverages .....	218.153	223.794	229.391	5.2	2.5
Food .....	217.230	223.092	228.977	5.4	2.6
Food at home .....	205.393	213.867	219.467	6.9	2.6
Food away from home .....	235.468	236.611	244.478	3.8	3.3
Alcoholic beverages .....	207.758	209.478	210.239	1.2	.4
Housing .....	195.893	199.647	200.731	2.5	.5
Shelter .....	220.533	222.607	226.944	2.9	1.9
Rent of primary residence <sup>1</sup> .....	200.001	201.612	205.858	2.9	2.1
Owners' equivalent rent of residences <sup>1 2</sup> .....	209.389	211.280	215.688	3.0	2.1
Owners' equivalent rent of primary residence <sup>1 2</sup> .....	209.389	211.280	215.688	3.0	2.1
Fuels and utilities .....	199.955	211.506	202.109	1.1	-4.4
Household energy .....	173.802	194.337	175.319	.9	-9.8
Energy services <sup>1</sup> .....	177.811	199.378	179.605	1.0	-9.9
Electricity <sup>1</sup> .....	163.340	195.394	169.773	3.9	-13.1
Utility (piped) gas service <sup>1</sup> .....	169.997	166.672	162.825	-4.2	-2.3
Household furnishings and operations .....	119.665	120.522	118.575	-.9	-1.6
Apparel .....	151.952	149.119	158.805	4.5	6.5
Transportation .....	206.267	204.817	210.272	1.9	2.7
Private transportation .....	205.867	204.284	209.874	1.9	2.7
Motor fuel .....	328.129	312.527	338.396	3.1	8.3
Gasoline (all types) .....	323.655	307.417	333.621	3.1	8.5
Gasoline, unleaded regular <sup>3</sup> .....	315.646	299.523	325.361	3.1	8.6
Gasoline, unleaded midgrade <sup>3 4</sup> .....	368.964	350.570	380.101	3.0	8.4
Gasoline, unleaded premium <sup>3</sup> .....	311.520	297.759	321.394	3.2	7.9
Medical care .....	370.392	378.017	381.343	3.0	.9
Recreation <sup>5</sup> .....	117.534	118.237	119.533	1.7	1.1
Education and communication <sup>5</sup> .....	134.143	134.971	135.152	.8	.1
Other goods and services .....	311.307	313.593	314.027	.9	.1
<b>Commodity and service group</b>					
All items .....	209.150	211.537	214.712	2.7	1.5
Commodities .....	189.814	191.122	196.543	3.5	2.8
Commodities less food and beverages .....	173.657	172.980	177.808	2.4	2.8
Nondurables less food and beverages .....	231.284	226.857	237.196	2.6	4.6
Durables .....	117.468	120.609	120.755	2.8	.1
Services .....	233.846	237.410	238.638	2.0	.5
<b>Special aggregate indexes</b>					
All items less medical care .....	202.470	204.654	207.758	2.6	1.5
All items less shelter .....	207.065	209.471	212.411	2.6	1.4
Commodities less food .....	175.705	175.091	179.879	2.4	2.7
Nondurables .....	225.153	225.502	234.062	4.0	3.8
Nondurables less food .....	230.970	226.855	236.805	2.5	4.4
Services less rent of shelter <sup>2</sup> .....	237.767	242.337	240.380	1.1	-.8
Services less medical care services .....	222.239	225.446	226.434	1.9	.4
Energy .....	242.974	246.479	248.494	2.3	.8
All items less energy .....	207.476	210.120	212.766	2.5	1.3
All items less food and energy .....	205.325	207.308	209.326	1.9	1.0

<sup>1</sup> This index series was calculated using a Laspeyres estimator. All other item stratum index series were calculated using a geometric means estimator.

<sup>2</sup> Index is on a November 1984=100 base.

<sup>3</sup> Special index based on a substantially smaller sample.

<sup>4</sup> Indexes on a December 1993=100 base.

<sup>5</sup> Indexes on a December 1997=100 base.

- Data not available.