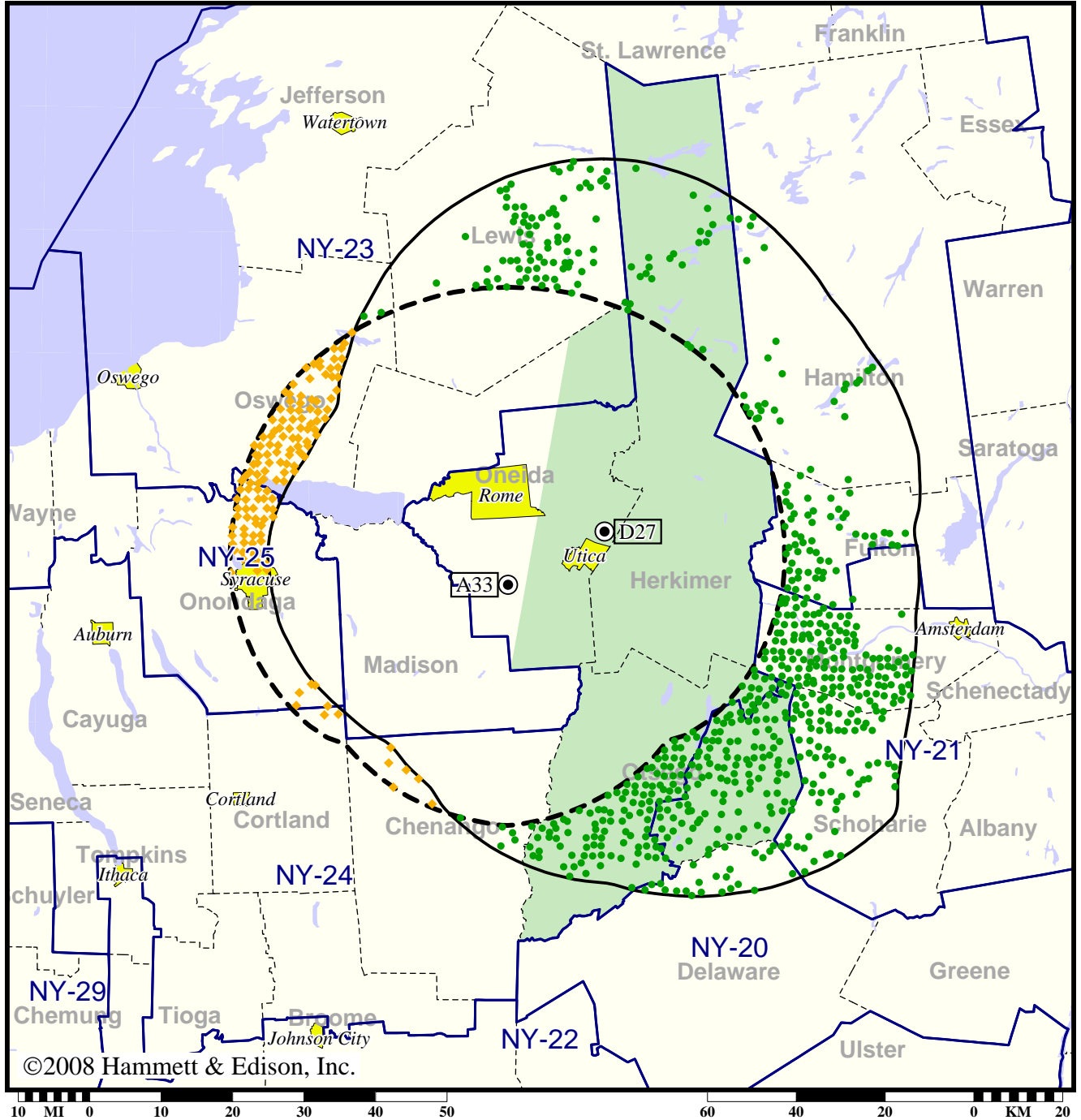


TV Station WFXV • Analog Channel 33, DTV Channel 27 • Utica, NY

Expected Change In Coverage: Granted Construction Permit

CP (solid): 1000 kW ERP at 211 m HAAT, Network: Fox
vs. Analog (dashed): 851 kW ERP at 193 m HAAT, Network: Fox

Market: Utica, NY



©2008 Hammett & Edison, Inc.

- Coverage gained after DTV transition
- (no symbol) No change in coverage
- ◆ Coverage lost but still served by same network

Utica, NY

WFXV

Population Receiving Analog Service	482,779
Population Receiving Digital Service.....	494,912

The following statistics pertain only to the area outside the analog service contour:

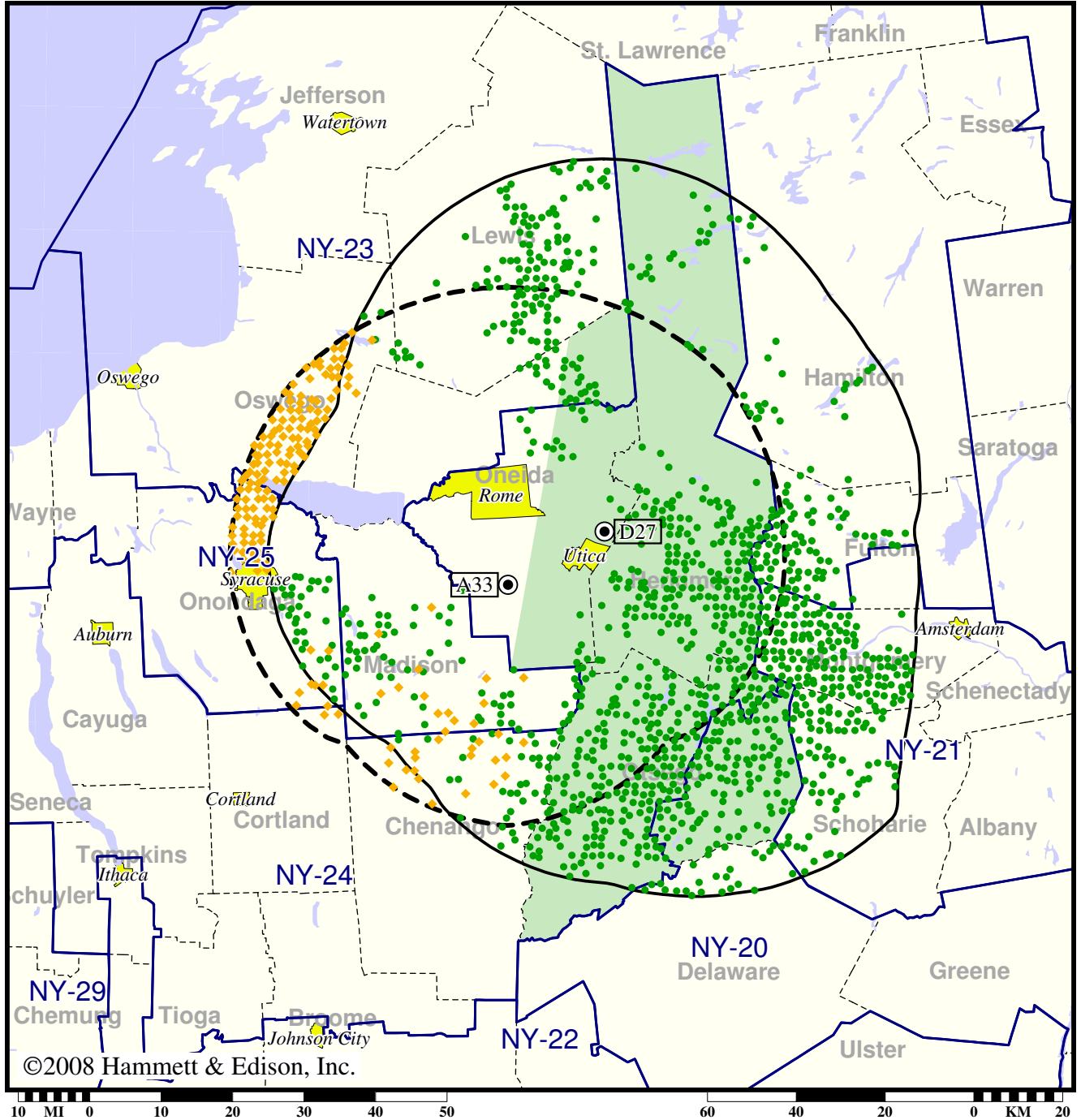
Analog Population Losing Service	129,256
Population Gaining Digital Service	44,790
Net Gain	-84,466

TV Station WFXV • Analog Channel 33, DTV Channel 27 • Utica, NY

Expected Change In Coverage: Granted Construction Permit

CP (solid): 1000 kW ERP at 211 m HAAT, Network: Fox
vs. Analog (dashed): 851 kW ERP at 193 m HAAT, Network: Fox

Market: Utica, NY



©2008 Hammett & Edison, Inc.

- Coverage gained after DTV transition
- (no symbol) No change in coverage
- ◆ Coverage lost but still served by same network

Utica, NY

WFXV

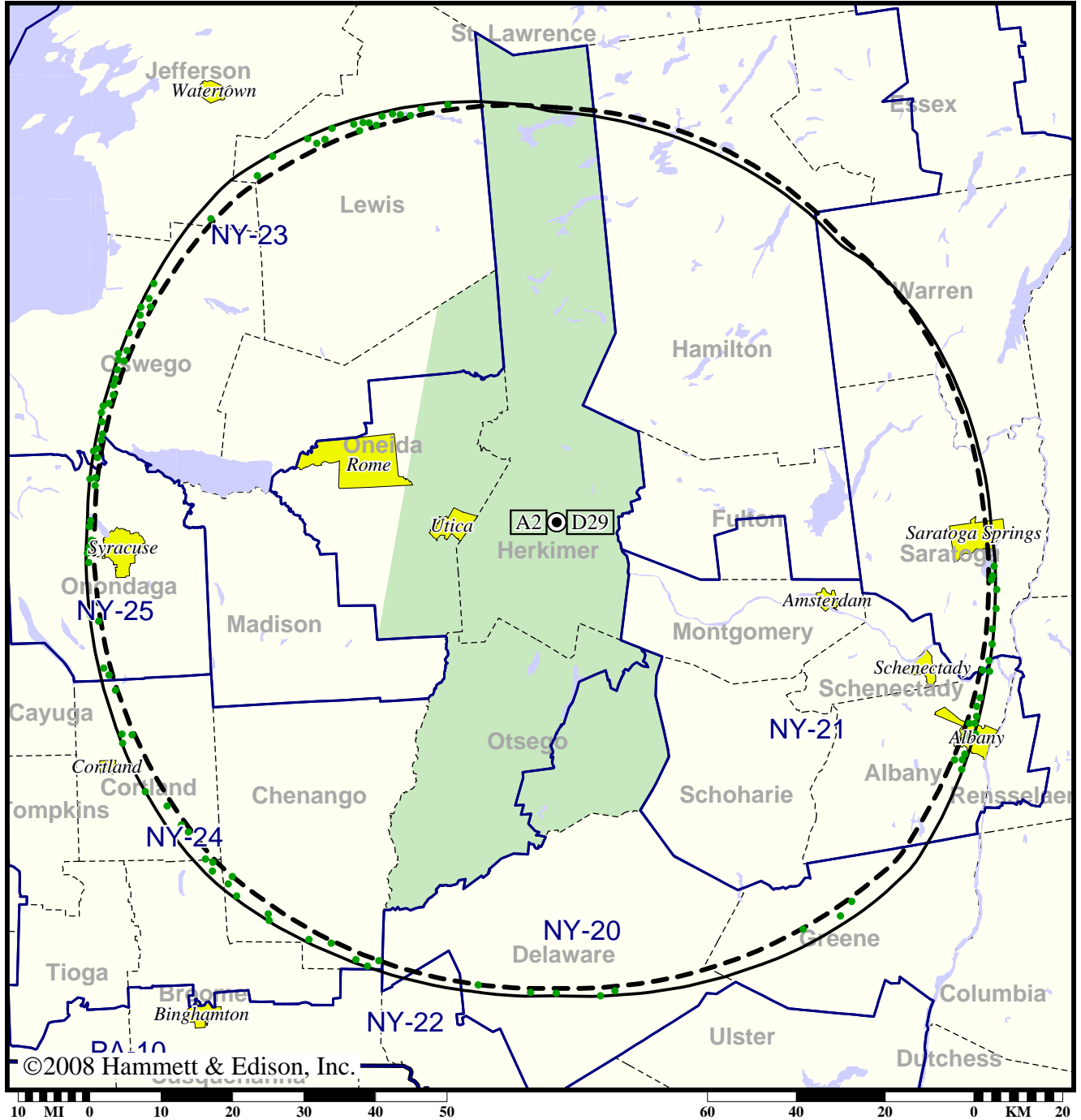
Population Receiving Analog Service	482,779
Population Receiving Digital Service.....	494,912
Analog Population Losing Service	131,545
Population Gaining Digital Service	143,678
Net Gain	12,133

TV Station WKTV • Analog Channel 2, DTV Channel 29 • Utica, NY

Expected Change In Coverage: Licensed Operation

Licensed (solid): 708 kW ERP at 402 m HAAT, Network: NBC
vs. Analog (dashed): 34.7 kW ERP at 421 m HAAT, Network: NBC

Market: Utica, NY



- Coverage gained after DTV transition
- (no symbol) No change in coverage

Utica, NY

WKTV

Population Receiving Analog Service	551,143
Population Receiving Digital Service.....	1,247,948

The following statistics pertain only to the area outside the analog service contour:

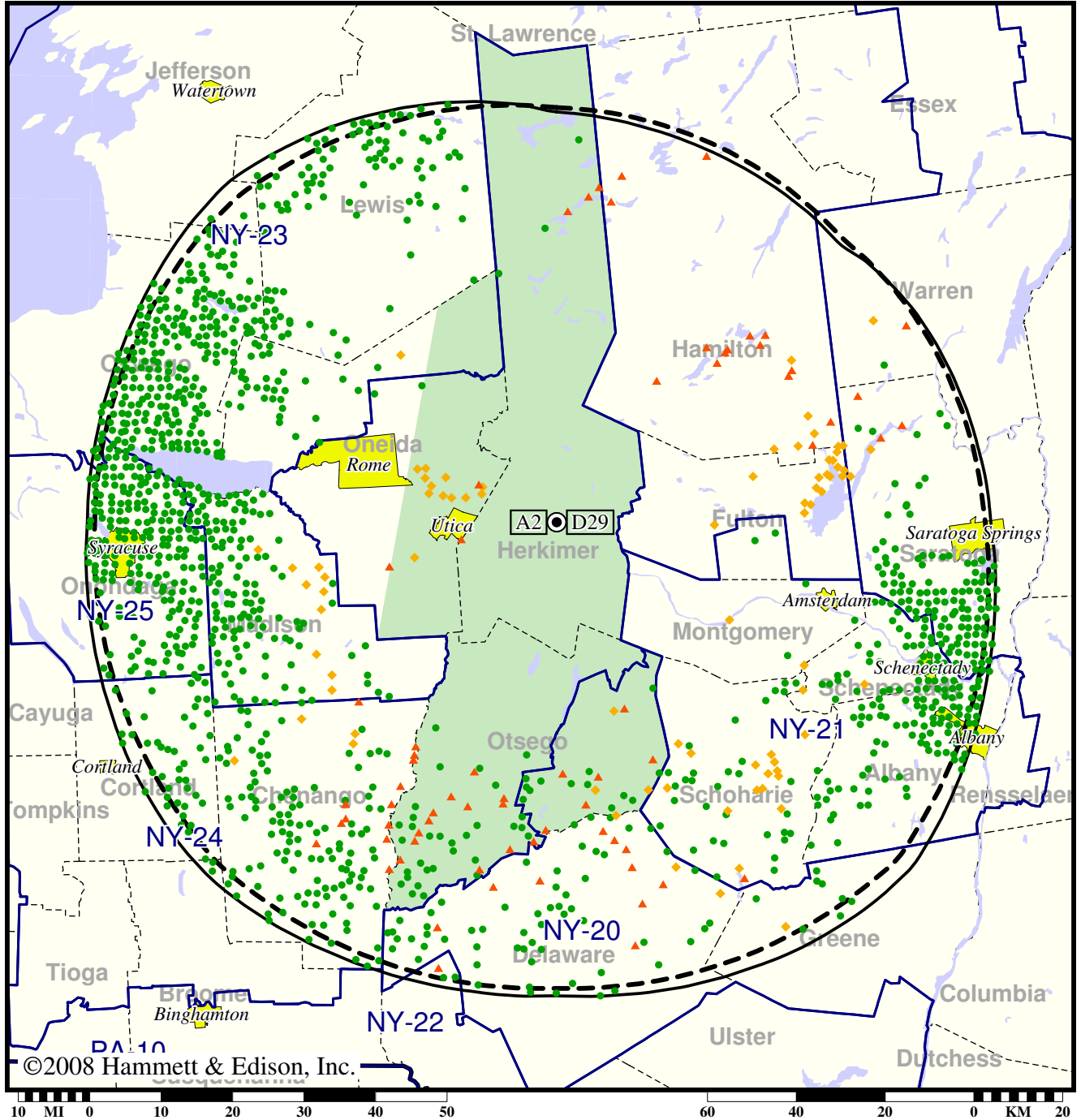
Analog Population Losing Service	0
Population Gaining Digital Service	105,391
Net Gain	105,391

TV Station WKTV • Analog Channel 2, DTV Channel 29 • Utica, NY

Expected Change In Coverage: Licensed Operation

Licensed (solid): 708 kW ERP at 402 m HAAT, Network: NBC
vs. Analog (dashed): 34.7 kW ERP at 421 m HAAT, Network: NBC

Market: Utica, NY



- Coverage gained after DTV transition
- (no symbol) No change in coverage
- ◆ Coverage lost but still served by same network
- ▲ Coverage lost and no other service by same network

Utica, NY

WKTV

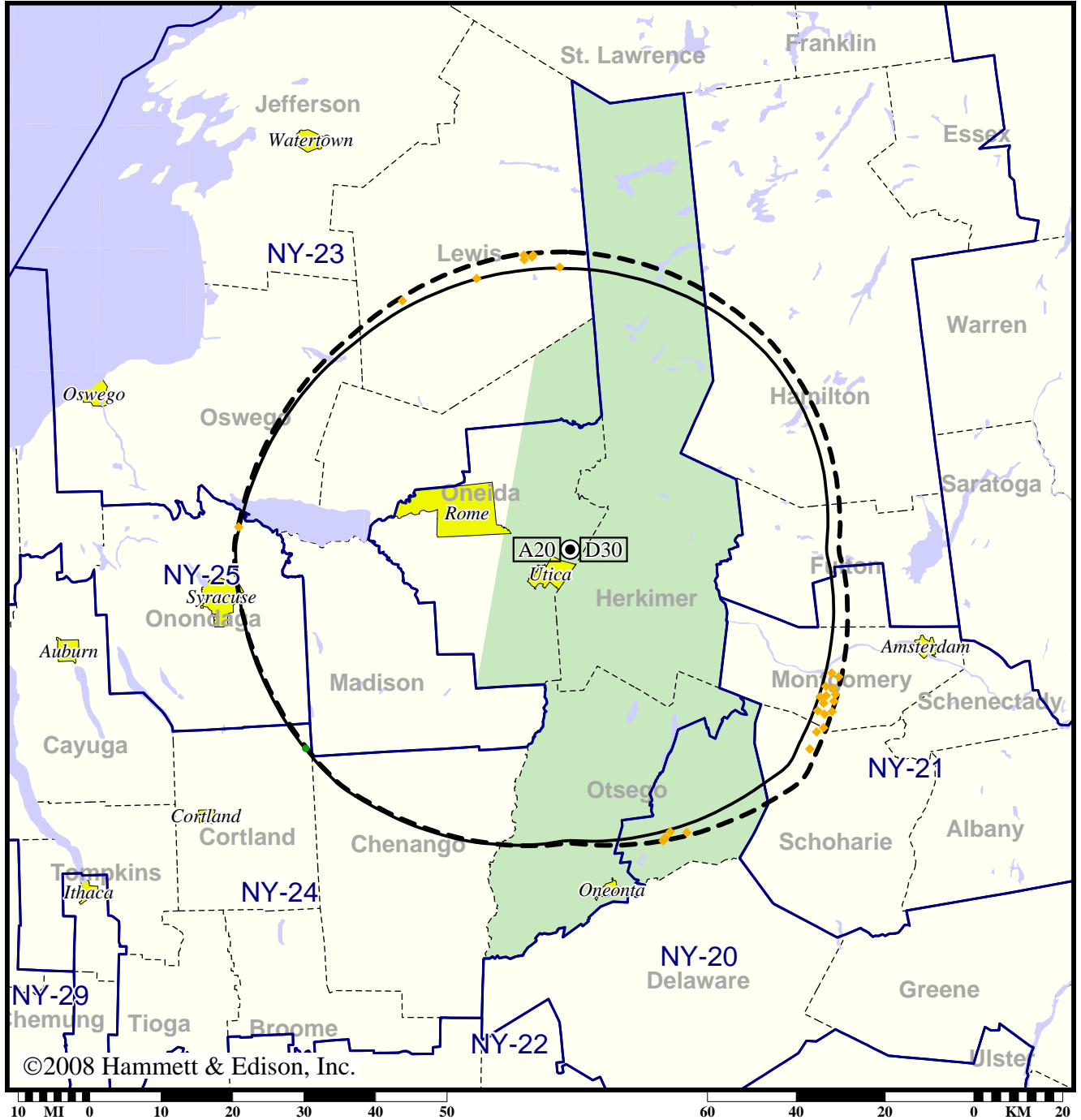
Population Receiving Analog Service	551,143
Population Receiving Digital Service.....	1,247,948
Analog Population Losing Service	21,978
Population Gaining Digital Service	718,783
Net Gain	696,805

TV Station WUTR • Analog Channel 20, DTV Channel 30 • Utica, NY

Expected Change In Coverage: Licensed Operation

Licensed (solid): 50.0 kW ERP at 227 m HAAT, Network: ABC
vs. Analog (dashed): 1150 kW ERP at 244 m HAAT, Network: ABC

Market: Utica, NY



- Coverage gained after DTV transition
- (no symbol) No change in coverage
- ◆ Coverage lost but still served by same network

Utica, NY

WUTR

Population Receiving Analog Service	419,616
Population Receiving Digital Service.....	404,250

The following statistics pertain only to the area outside the analog service contour:

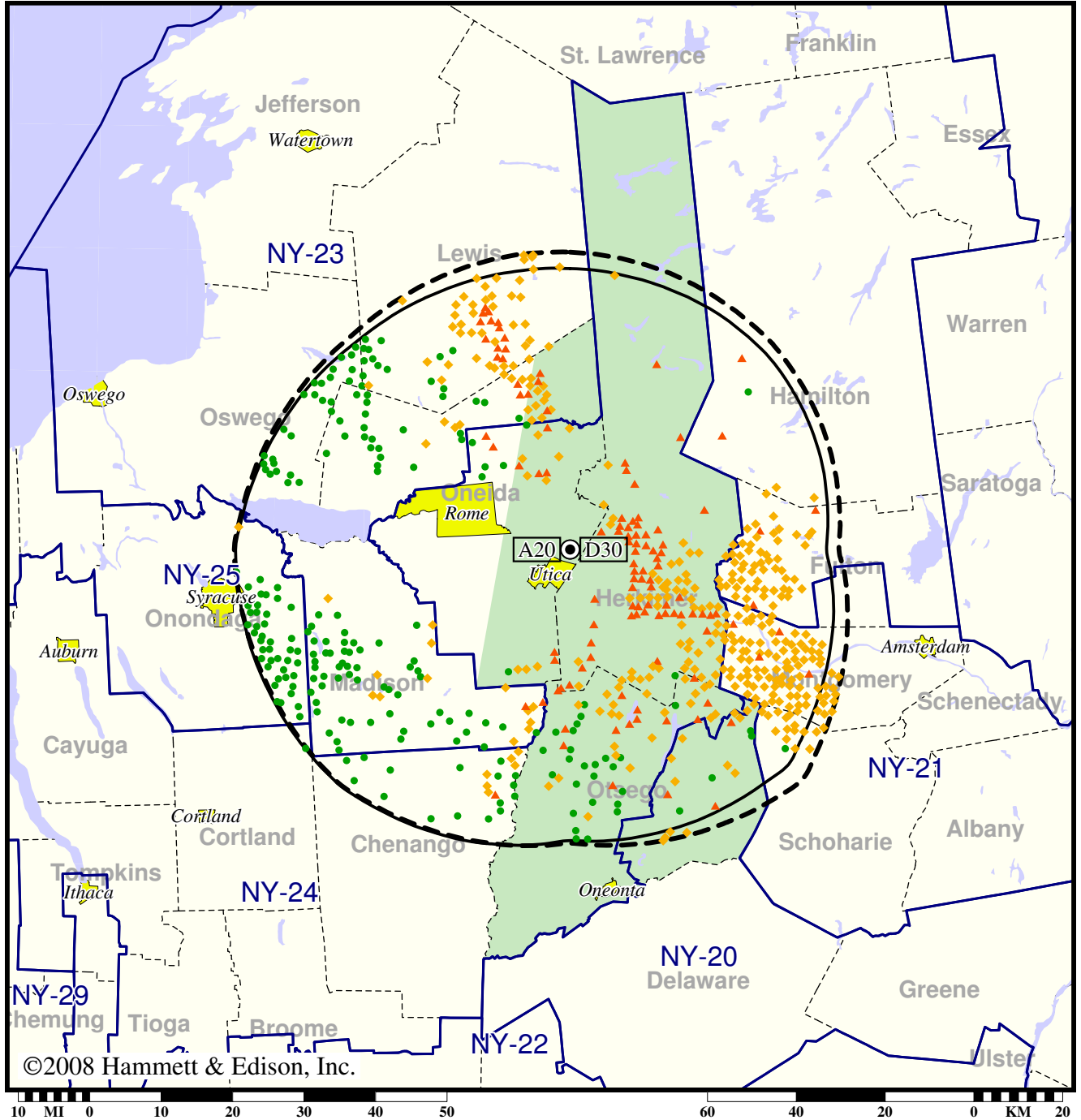
Analog Population Losing Service	3,815
Population Gaining Digital Service	64
Net Gain	-3,751

TV Station WUTR • Analog Channel 20, DTV Channel 30 • Utica, NY

Expected Change In Coverage: Licensed Operation

Licensed (solid): 50.0 kW ERP at 227 m HAAT, Network: ABC
vs. Analog (dashed): 1150 kW ERP at 244 m HAAT, Network: ABC

Market: Utica, NY



- Coverage gained after DTV transition
- (no symbol) No change in coverage
- ◆ Coverage lost but still served by same network
- ▲ Coverage lost and no other service by same network

Utica, NY

WUTR

Population Receiving Analog Service	419,616
Population Receiving Digital Service.....	404,250
Analog Population Losing Service	48,866
Population Gaining Digital Service	33,500
Net Gain	-15,366