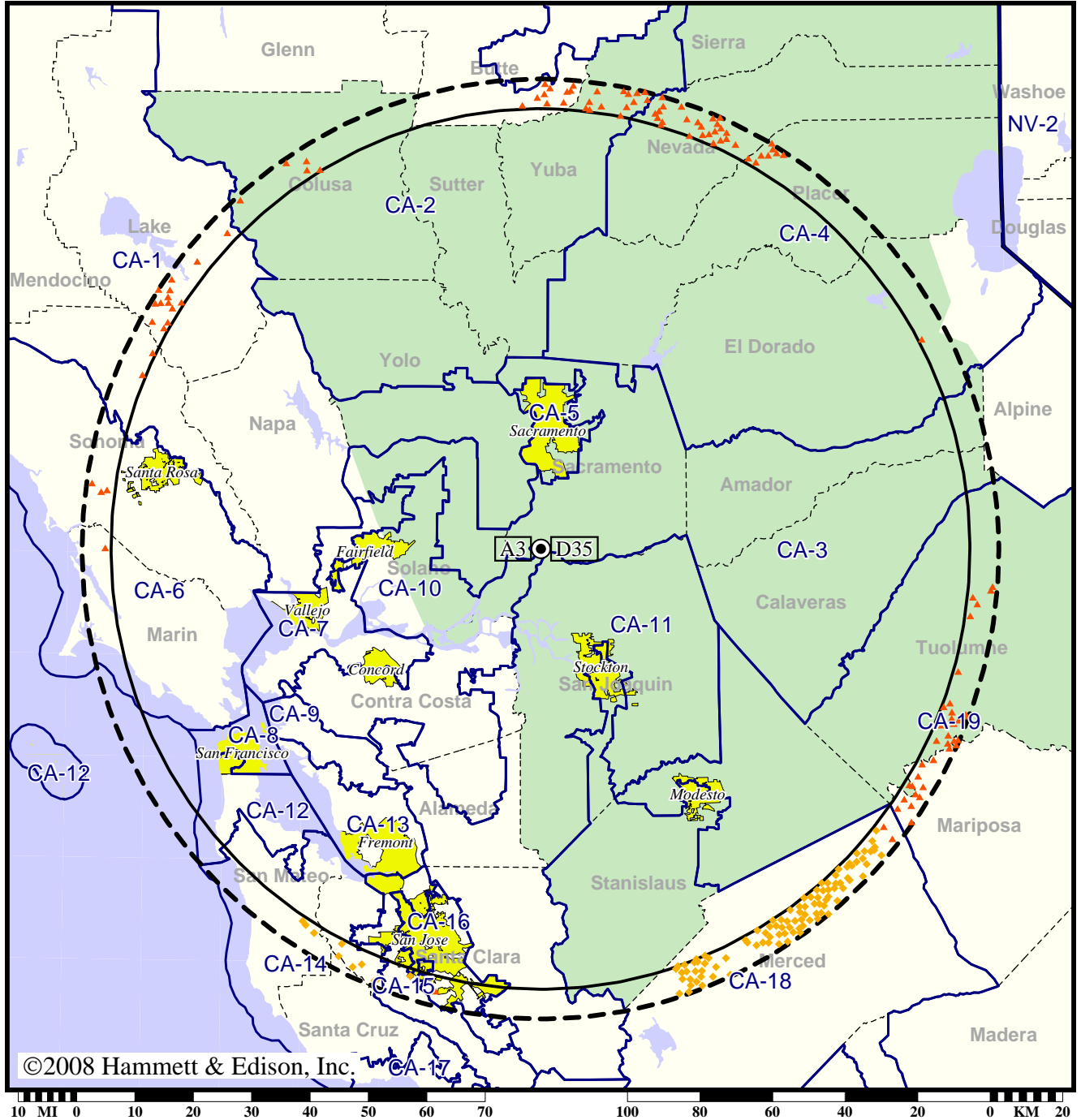


Station KCRA-TV • Analog Channel 3, DTV Channel 35 • Sacramento, CA

Expected Change In Coverage: Granted Construction Permit

CP (solid): 1000 kW ERP at 579 m HAAT, Network: NBC
vs. Analog (dashed): 100 kW ERP at 600 m HAAT, Network: NBC

Market: Sacramento-Stockton-Modesto, CA



- (no symbol) No change in coverage
- ◆ Coverage lost but still served by same network
- ▲ Coverage lost and no other service by same network

Sacramento-Stockton-Modesto, CA

KCRA-TV

Population Receiving Analog Service4,002,463
Population Receiving Digital Service.....4,226,973

The following statistics pertain only to the area outside
the analog service contour:

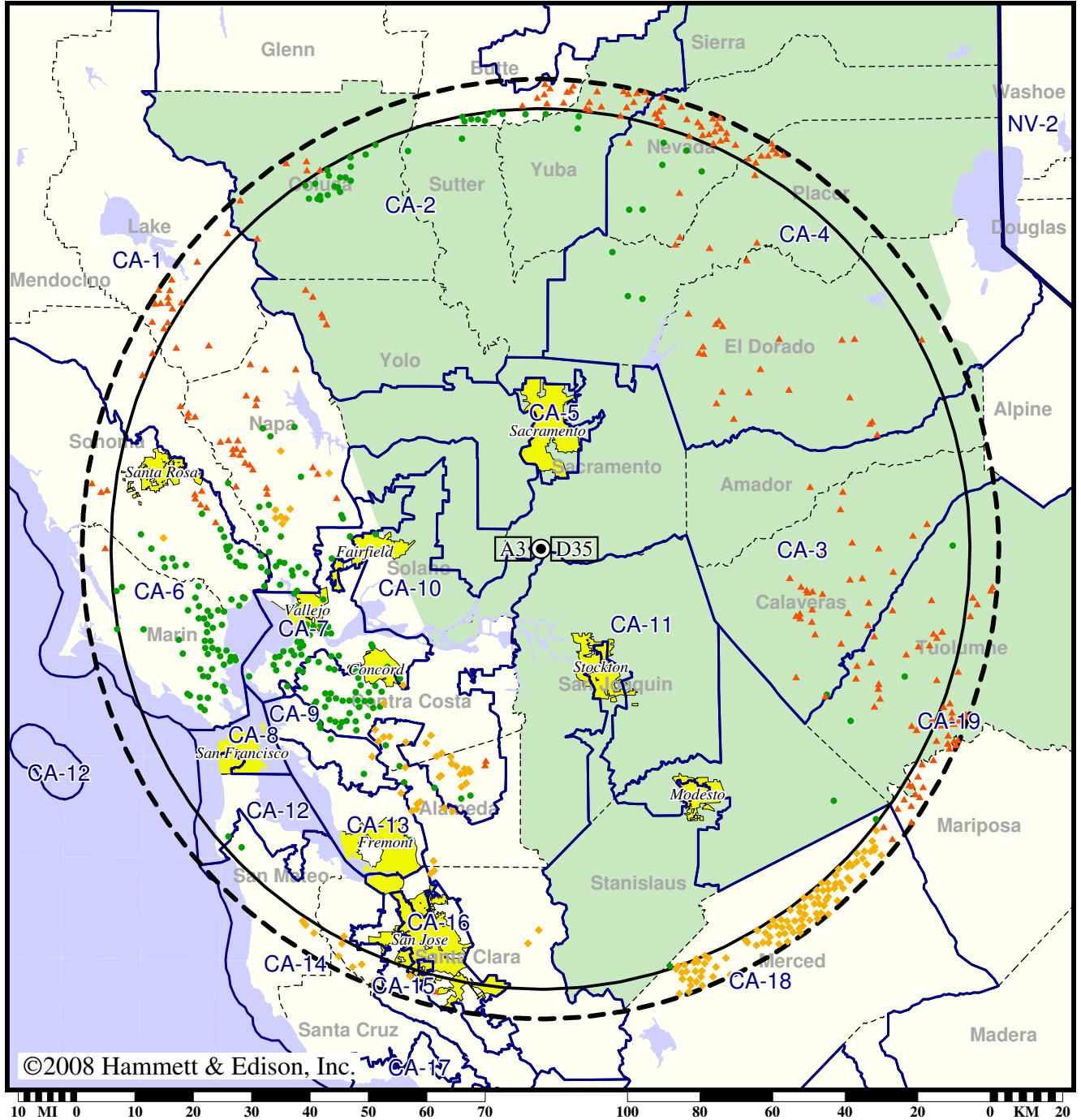
Analog Population Losing Service40,904
Population Gaining Digital Service 0
Net Gain-40,904

Station KCRA-TV • Analog Channel 3, DTV Channel 35 • Sacramento, CA

Expected Change In Coverage: Granted Construction Permit

CP (solid): 1000 kW ERP at 579 m HAAT, Network: NBC
vs. Analog (dashed): 100 kW ERP at 600 m HAAT, Network: NBC

Market: Sacramento-Stockton-Modesto, CA



©2008 Hammett & Edison, Inc.

- Coverage gained after DTV transition
- (no symbol) No change in coverage
- ◆ Coverage lost but still served by same network
- ▲ Coverage lost and no other service by same network

Sacramento-Stockton-Modesto, CA

KCRA-TV

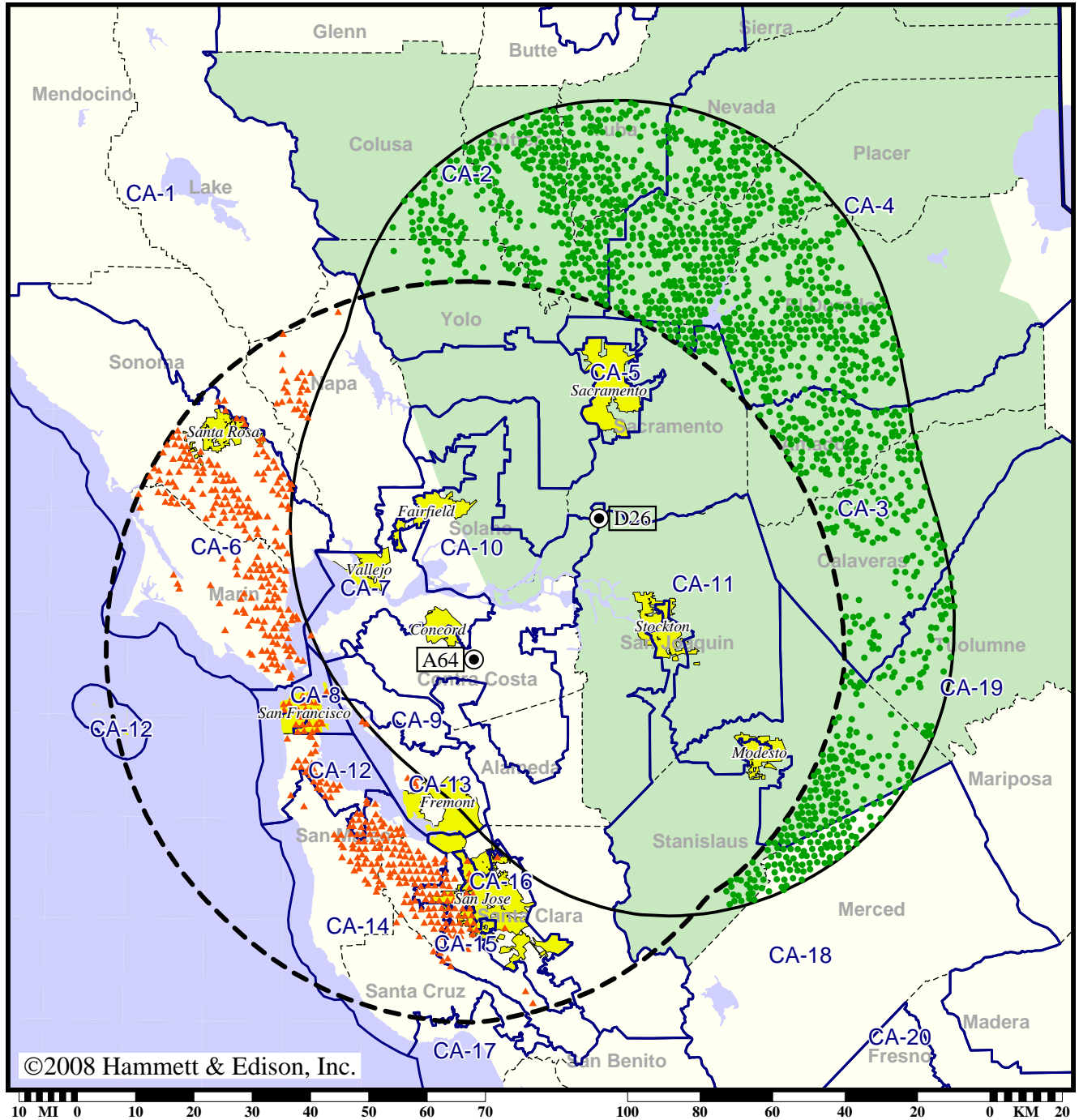
Population Receiving Analog Service	4,002,463
Population Receiving Digital Service.....	4,226,973
Analog Population Losing Service	135,489
Population Gaining Digital Service	359,999
Net Gain	224,510

Station KTFK-TV • Analog Channel 64, DTV Channel 26 • Stockton, CA

Expected Change In Coverage: Granted Construction Permit

**CP (solid): 430 kW ERP at 595 m HAAT
vs. Analog (dashed): 1950 kW ERP at 874 m HAAT**

Market: Sacramento-Stockton-Modesto, CA



- Coverage gained after DTV transition
- (no symbol) No change in coverage
- ▲ Coverage lost after DTV transition

Sacramento-Stockton-Modesto, CA

KTFK-TV

Population Receiving Analog Service5,863,602
Population Receiving Digital Service.....3,649,227

The following statistics pertain only to the area outside
the analog service contour:

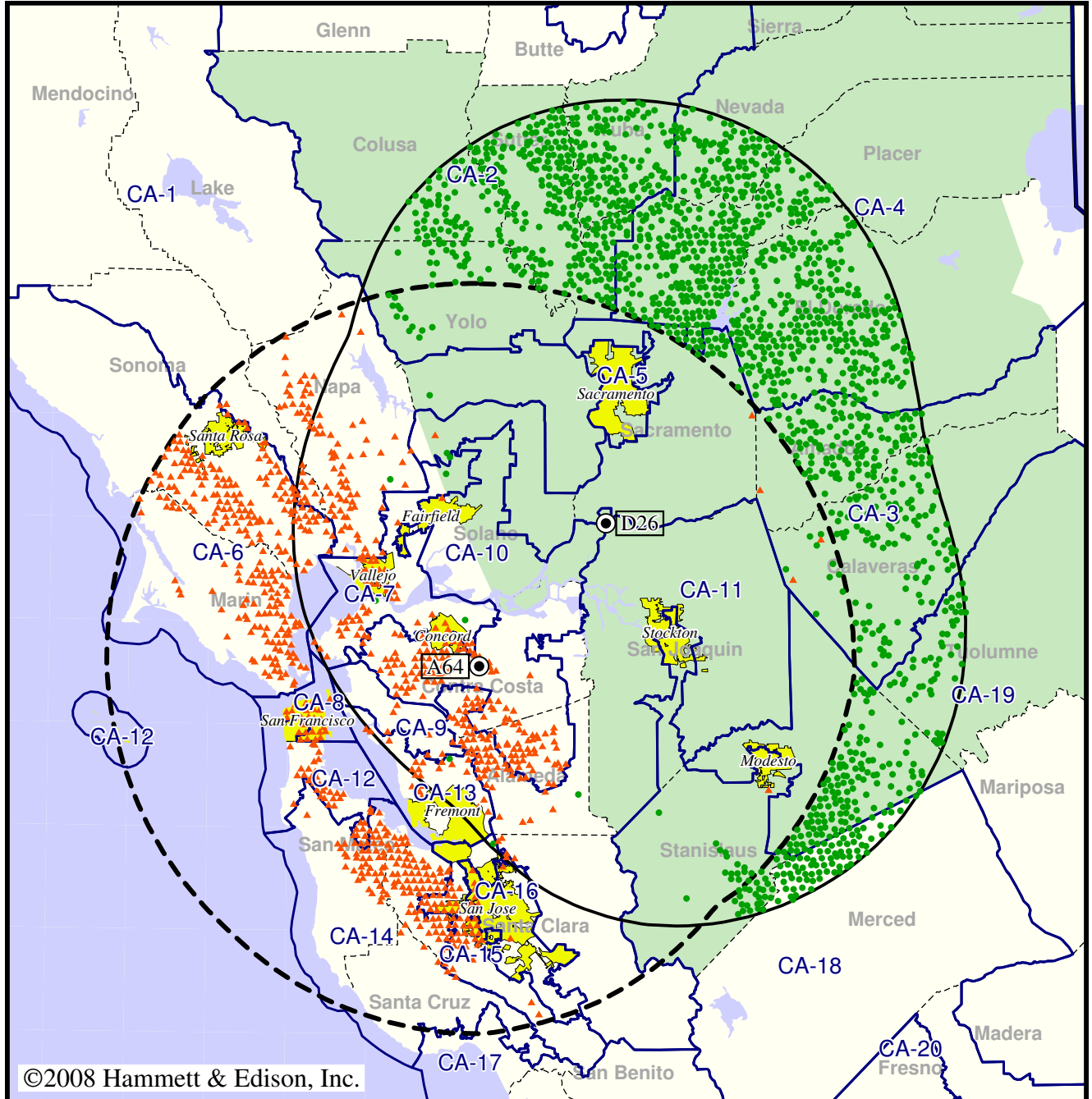
Analog Population Losing Service2,180,816
Population Gaining Digital Service795,520
Net Gain-1,385,296

Station KTFK-TV • Analog Channel 64, DTV Channel 26 • Stockton, CA

Expected Change In Coverage: Granted Construction Permit

CP (solid): 430 kW ERP at 595 m HAAT
vs. Analog (dashed): 1950 kW ERP at 874 m HAAT

Market: Sacramento-Stockton-Modesto, CA



©2008 Hammett & Edison, Inc.



- Coverage gained after DTV transition
- (no symbol) No change in coverage
- ▲ Coverage lost after DTV transition

Sacramento-Stockton-Modesto, CA

KTFK-TV

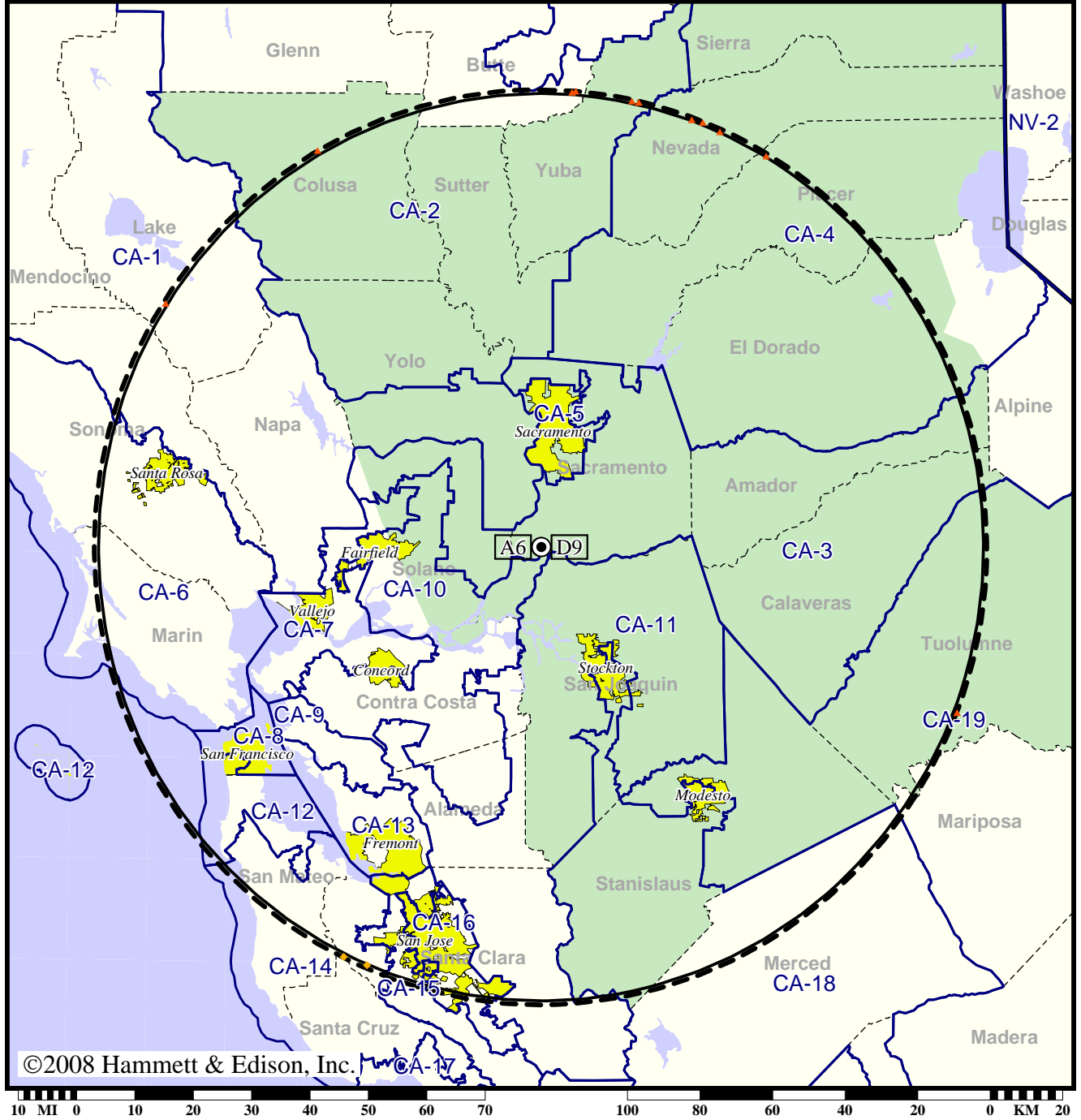
Population Receiving Analog Service	5,863,602
Population Receiving Digital Service.....	3,649,227
Analog Population Losing Service	3,020,247
Population Gaining Digital Service	805,872
Net Gain	-2,214,375

TV Station KVIE • Analog Channel 6, DTV Channel 9 • Sacramento, CA

Expected Change In Coverage: Granted Construction Permit

CP (solid): 33.0 kW ERP at 597 m HAAT, Network: PBS
vs. Analog (dashed): 100 kW ERP at 550 m HAAT, Network: PBS

Market: Sacramento-Stockton-Modesto, CA



- (no symbol) No change in coverage
- ◆ Coverage lost but still served by same network
- ▲ Coverage lost and no other service by same network

Sacramento-Stockton-Modesto, CA

KVIE

Population Receiving Analog Service3,729,766
Population Receiving Digital Service.....5,905,717

The following statistics pertain only to the area outside
the analog service contour:

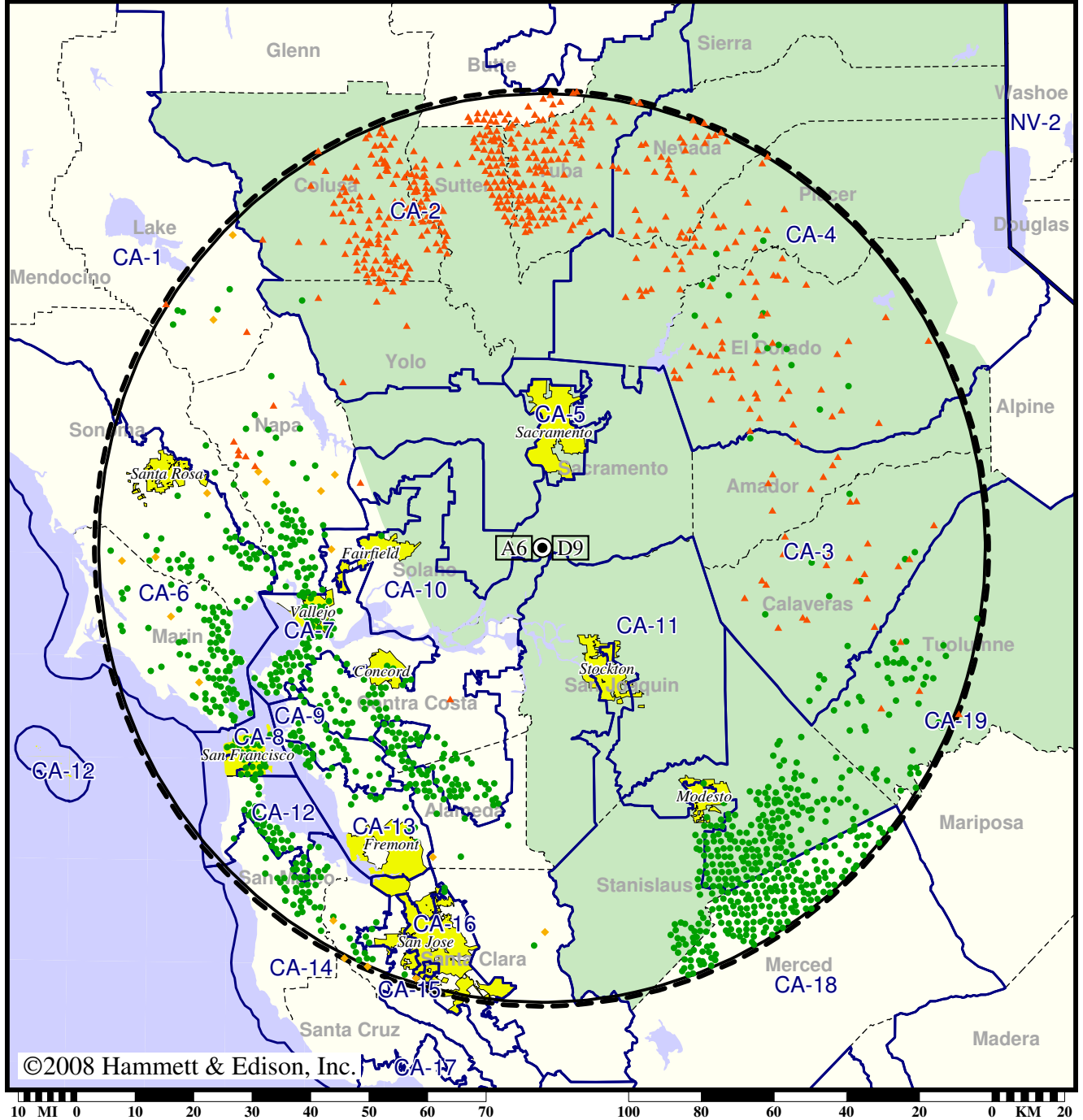
Analog Population Losing Service 1,079
Population Gaining Digital Service 0
Net Gain-1,079

TV Station KVIE • Analog Channel 6, DTV Channel 9 • Sacramento, CA

Expected Change In Coverage: Granted Construction Permit

CP (solid): 33.0 kW ERP at 597 m HAAT, Network: PBS
vs. Analog (dashed): 100 kW ERP at 550 m HAAT, Network: PBS

Market: Sacramento-Stockton-Modesto, CA



- Coverage gained after DTV transition
- (no symbol) No change in coverage
- ◆ Coverage lost but still served by same network
- ▲ Coverage lost and no other service by same network

Sacramento-Stockton-Modesto, CA

KVIE

Population Receiving Analog Service	3,729,766
Population Receiving Digital Service.....	5,905,717
Analog Population Losing Service	182,108
Population Gaining Digital Service	2,358,059
Net Gain	2,175,951