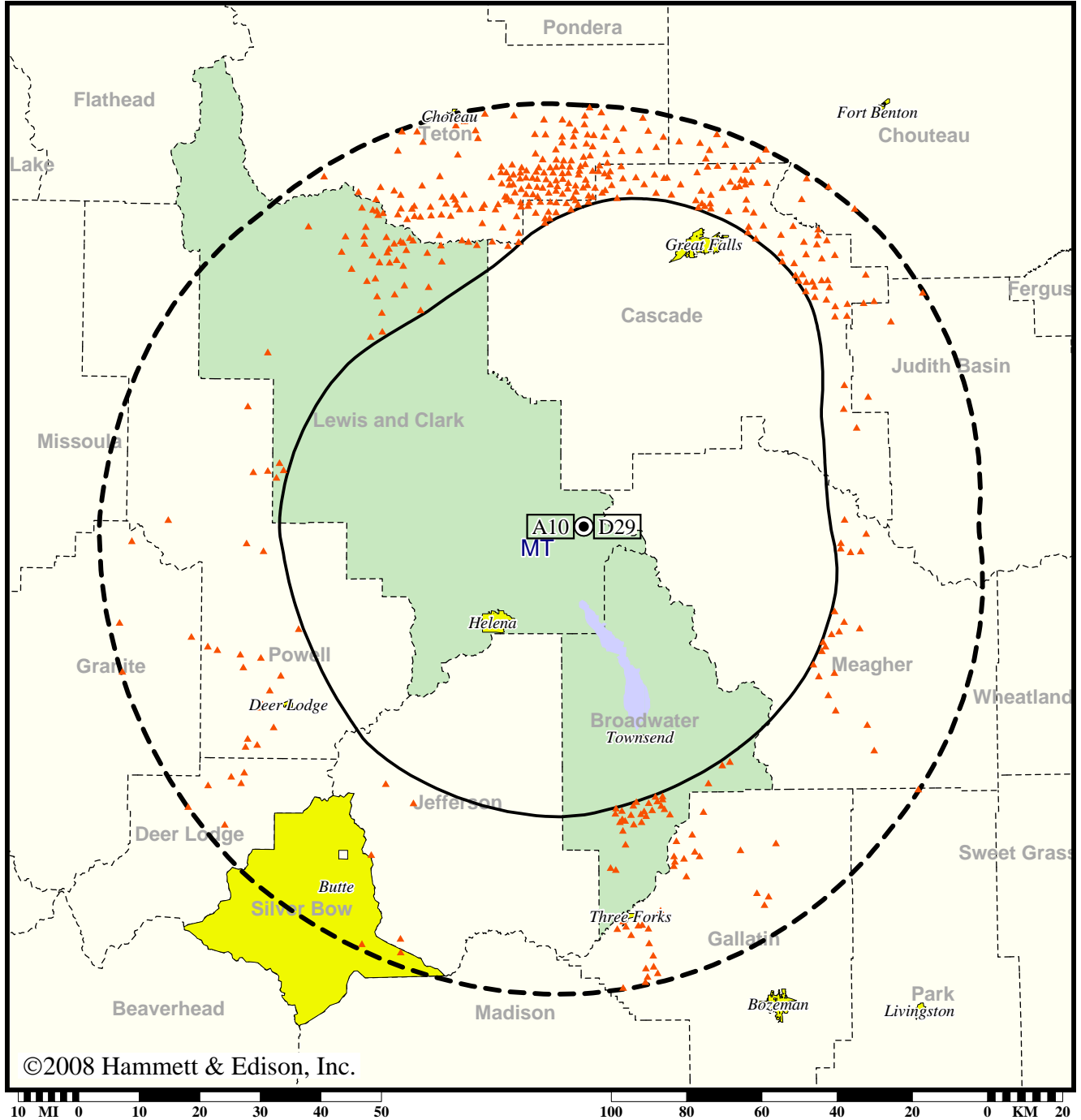


TV Station KMTF • Analog Channel 10, DTV Channel 29 • Helena, MT

Expected Change In Coverage: Post-Transition Appendix B Facility

Appendix B (solid): 43.4 kW ERP at 697 m HAAT
vs. Analog (dashed): 217 kW ERP at 711 m HAAT

Market: Helena, MT



- (no symbol) No change in coverage
- ▲ Coverage lost after DTV transition

Helena, MT

KMTF

Population Receiving Analog Service	149,013
Population Receiving Digital Service.....	131,307

The following statistics pertain only to the area outside
the analog service contour:

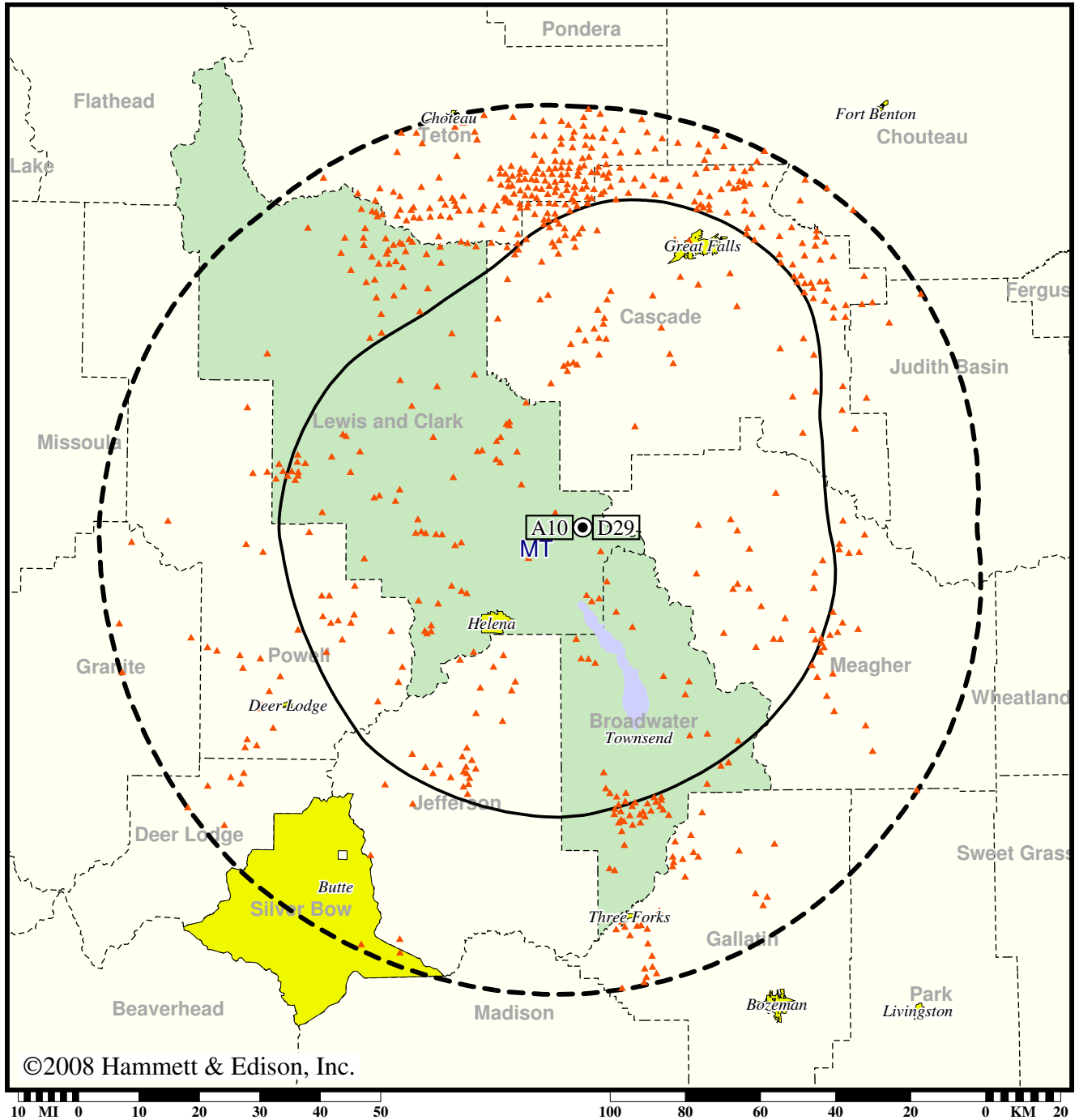
Analog Population Losing Service	8,763
Population Gaining Digital Service	0
Net Gain	-8,763

TV Station KMTF • Analog Channel 10, DTV Channel 29 • Helena, MT

Expected Change In Coverage: Post-Transition Appendix B Facility

Appendix B (solid): 43.4 kW ERP at 697 m HAAT
vs. Analog (dashed): 217 kW ERP at 711 m HAAT

Market: Helena, MT



- (no symbol) No change in coverage
- ▲ Coverage lost after DTV transition

Helena, MT

KMTF

Population Receiving Analog Service	149,013
Population Receiving Digital Service.....	131,307
Analog Population Losing Service	17,706
Population Gaining Digital Service	0
Net Gain	-17,706