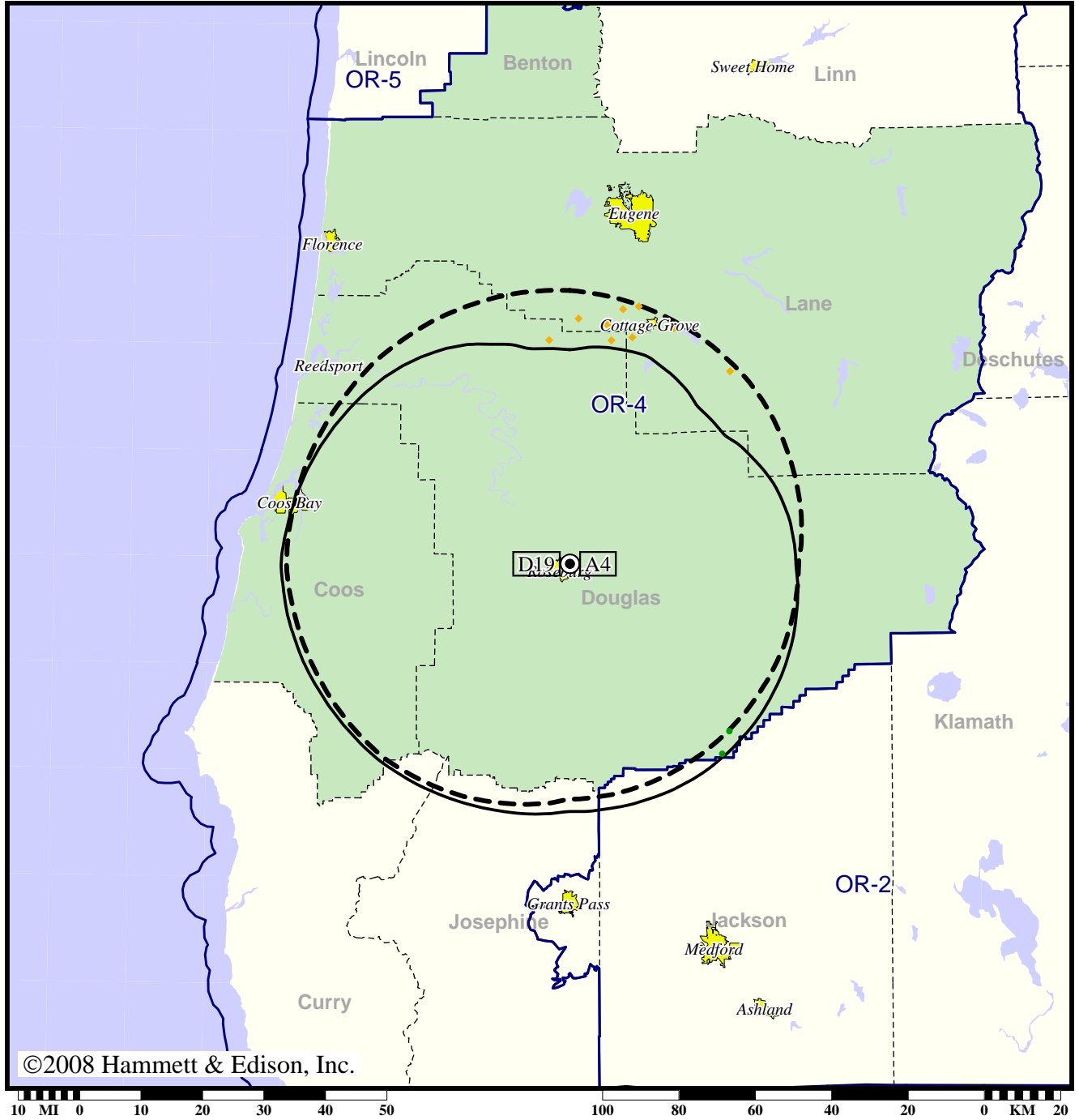


TV Station KPIC • Analog Channel 4, DTV Channel 19 • Roseburg, OR

Expected Change In Coverage: Licensed Operation

Licensed (solid): 50.0 kW ERP at 274 m HAAT, Network: CBS  
vs. Analog (dashed): 5.37 kW ERP at 305 m HAAT, Network: CBS

Market: Eugene, OR



- Coverage gained after DTV transition
- (no symbol) No change in coverage
- ◆ Coverage lost but still served by same network

Eugene, OR

KPIC

Population Receiving Analog Service .....	90,793
Population Receiving Digital Service.....	67,528

The following statistics pertain only to the area outside the analog service contour:

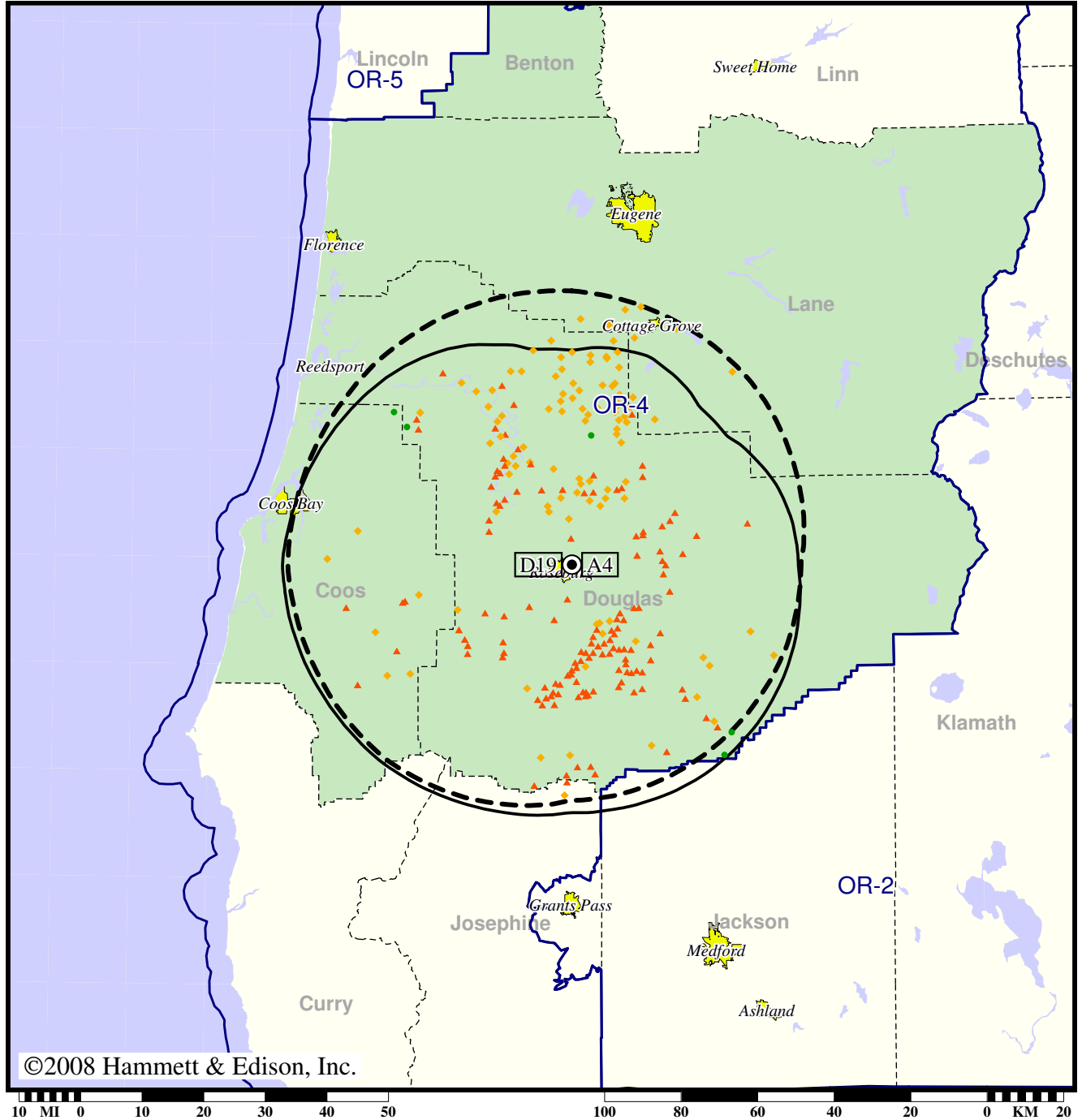
Analog Population Losing Service .....	1,939
Population Gaining Digital Service .....	12
Net Gain .....	-1,927

TV Station KPIC • Analog Channel 4, DTV Channel 19 • Roseburg, OR

Expected Change In Coverage: Licensed Operation

Licensed (solid): 50.0 kW ERP at 274 m HAAT, Network: CBS  
vs. Analog (dashed): 5.37 kW ERP at 305 m HAAT, Network: CBS

Market: Eugene, OR



- Coverage gained after DTV transition
- (no symbol) No change in coverage
- ◆ Coverage lost but still served by same network
- ▲ Coverage lost and no other service by same network

Eugene, OR

KPIC

Population Receiving Analog Service .....	90,793
Population Receiving Digital Service.....	67,528
Analog Population Losing Service .....	23,286
Population Gaining Digital Service .....	21
Net Gain .....	-23,265