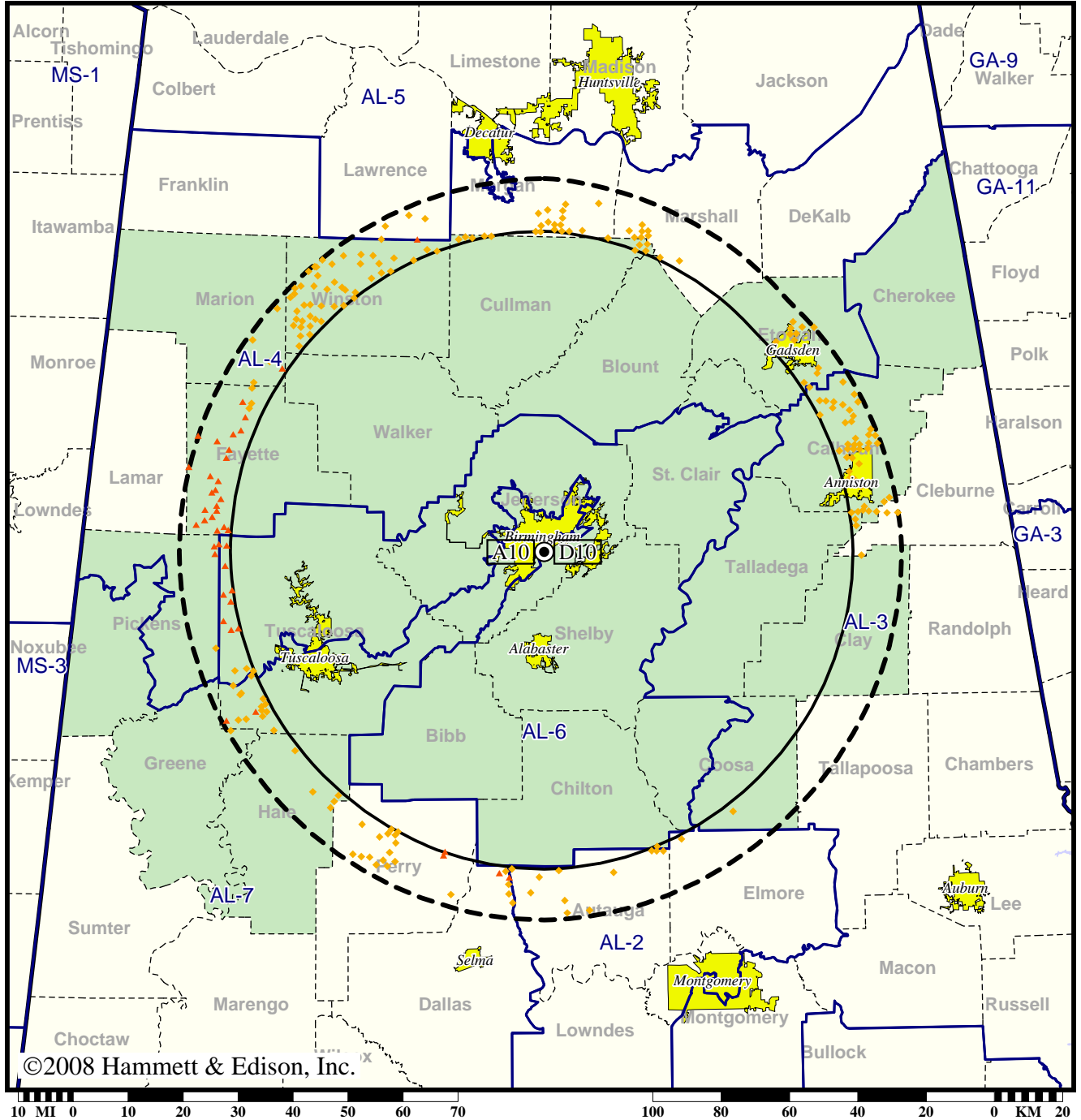


TV Station WBIQ • Analog Channel 10, DTV Channel 10 • Birmingham, AL

Expected Change In Coverage: Granted Construction Permit

CP (solid): 3.00 kW ERP at 426 m HAAT, Network: PBS  
 vs. Analog (dashed): 316 kW ERP at 426 m HAAT, Network: PBS

Market: Birmingham, AL



- (no symbol) No change in coverage
- ◆ Coverage lost but still served by same network
- ▲ Coverage lost and no other service by same network

Birmingham, AL

WBIQ

Population Receiving Analog Service ..... 1,412,647  
Population Receiving Digital Service..... 1,317,535

The following statistics pertain only to the area outside  
the analog service contour:

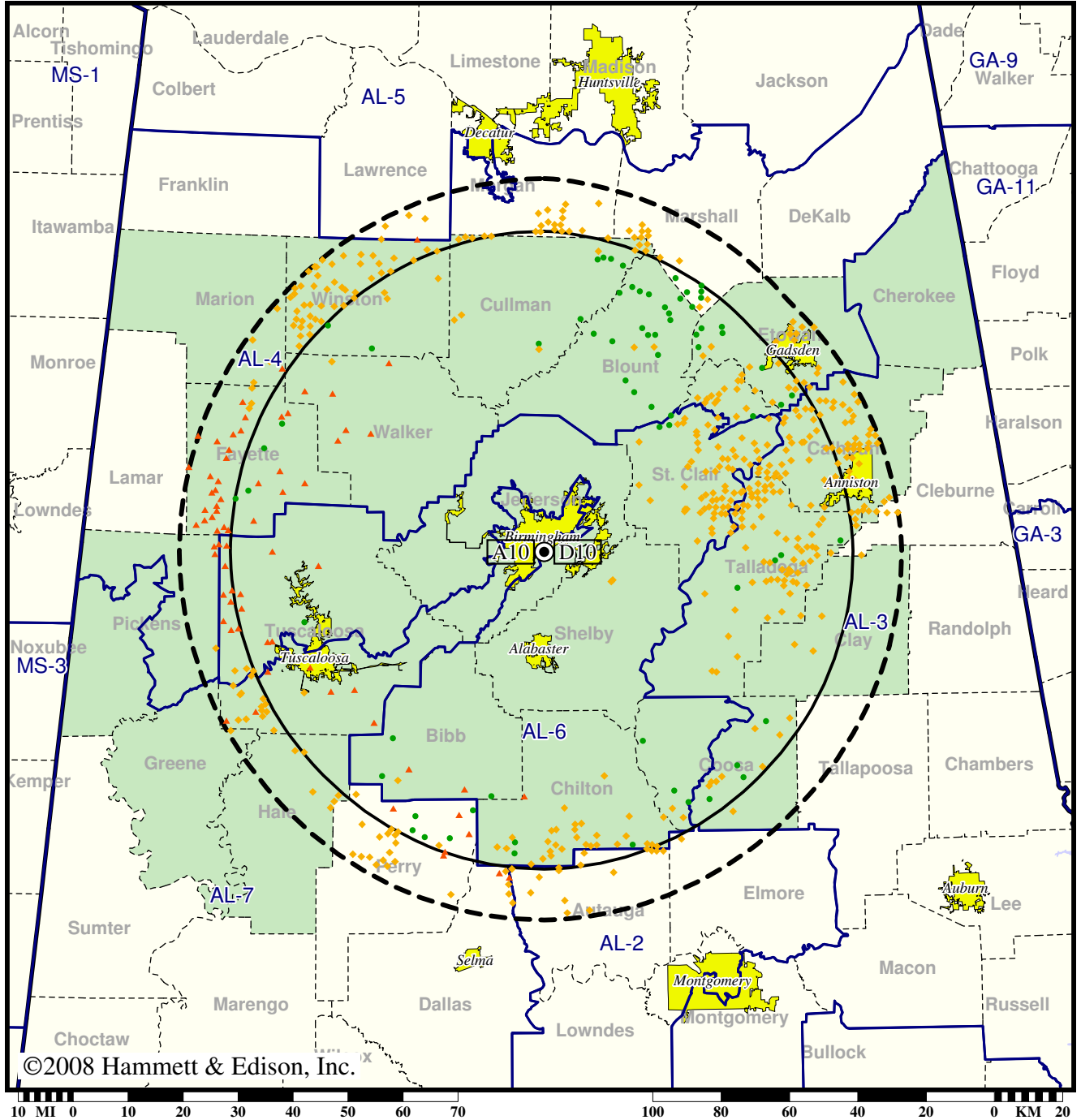
Analog Population Losing Service ..... 56,215  
Population Gaining Digital Service ..... 0  
Net Gain ..... -56,215

TV Station WBIQ • Analog Channel 10, DTV Channel 10 • Birmingham, AL

Expected Change In Coverage: Granted Construction Permit

CP (solid): 3.00 kW ERP at 426 m HAAT, Network: PBS  
vs. Analog (dashed): 316 kW ERP at 426 m HAAT, Network: PBS

Market: Birmingham, AL



- Coverage gained after DTV transition
- (no symbol) No change in coverage
- ◆ Coverage lost but still served by same network
- ▲ Coverage lost and no other service by same network

Birmingham, AL

WBIQ

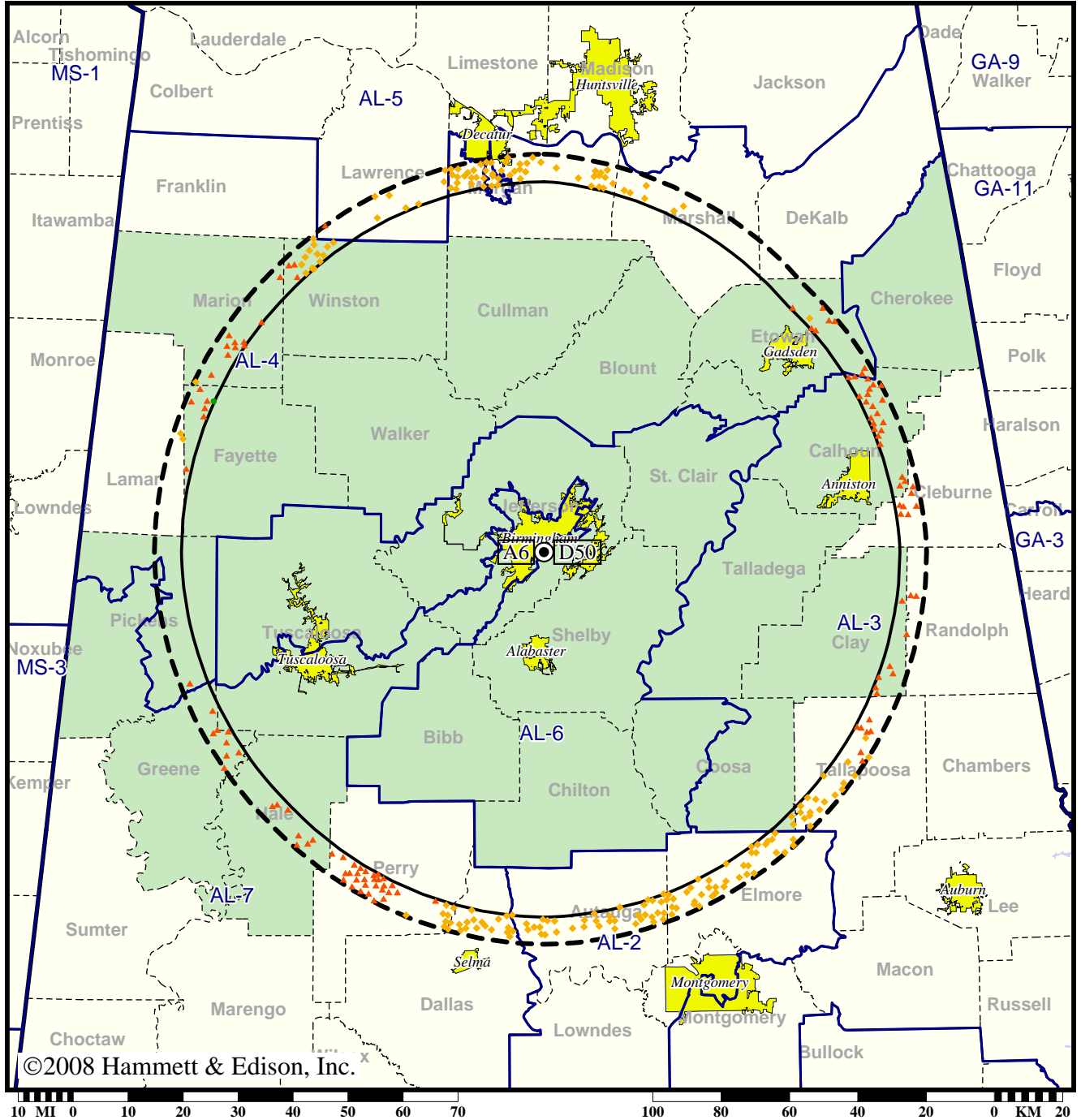
Population Receiving Analog Service .....	1,412,647
Population Receiving Digital Service.....	1,317,535
Analog Population Losing Service .....	102,874
Population Gaining Digital Service .....	7,762
Net Gain .....	-95,112

TV Station WBRC • Analog Channel 6, DTV Channel 50 • Birmingham, AL

Expected Change In Coverage: Granted Construction Permit

CP (solid): 953 kW ERP at 422 m HAAT, Network: Fox  
vs. Analog (dashed): 100 kW ERP at 420 m HAAT, Network: Fox

Market: Birmingham, AL



- Coverage gained after DTV transition
- (no symbol) No change in coverage
- ◆ Coverage lost but still served by same network
- ▲ Coverage lost and no other service by same network

Birmingham, AL

WBRC

Population Receiving Analog Service ..... 1,621,210  
Population Receiving Digital Service..... 1,677,959

The following statistics pertain only to the area outside  
the analog service contour:

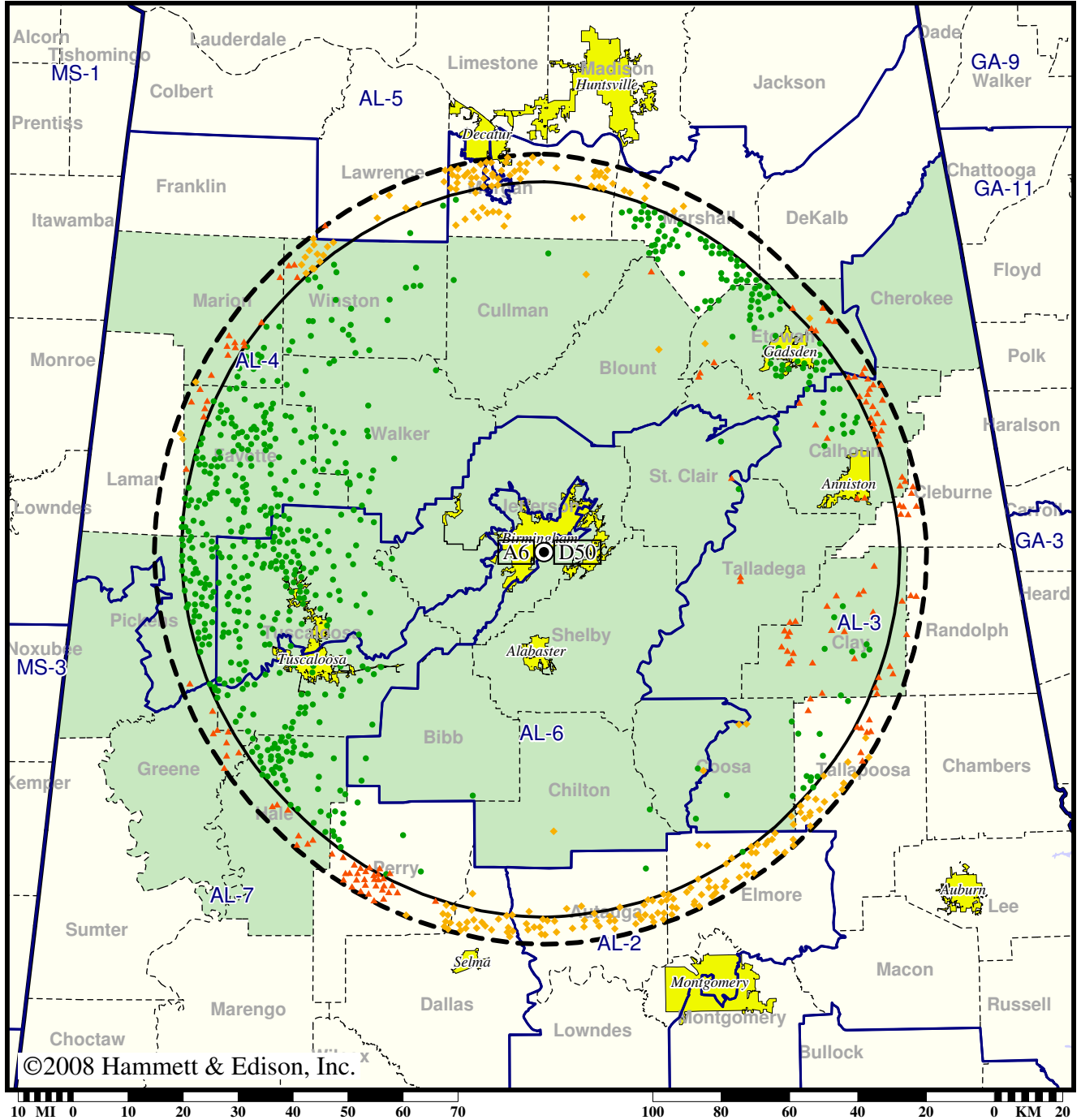
Analog Population Losing Service ..... 49,368  
Population Gaining Digital Service ..... 0  
Net Gain ..... -49,368

TV Station WBRC • Analog Channel 6, DTV Channel 50 • Birmingham, AL

Expected Change In Coverage: Granted Construction Permit

CP (solid): 953 kW ERP at 422 m HAAT, Network: Fox  
vs. Analog (dashed): 100 kW ERP at 420 m HAAT, Network: Fox

Market: Birmingham, AL



- Coverage gained after DTV transition
- (no symbol) No change in coverage
- ◆ Coverage lost but still served by same network
- ▲ Coverage lost and no other service by same network

Birmingham, AL

WBRC

Population Receiving Analog Service .....	1,621,210
Population Receiving Digital Service.....	1,677,959
Analog Population Losing Service .....	58,580
Population Gaining Digital Service .....	115,329
Net Gain .....	56,749

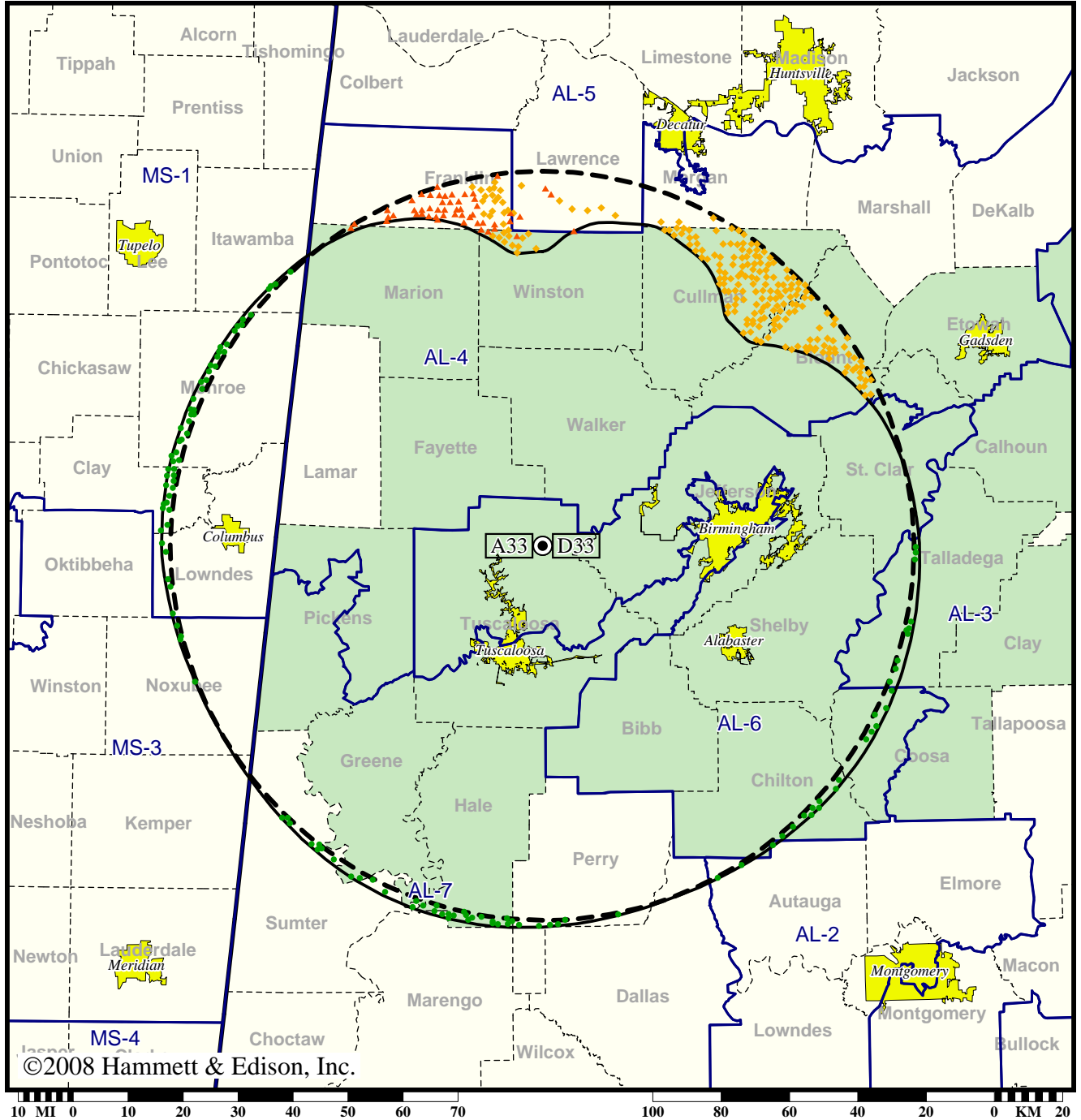


**Station WCFT-TV • Analog Channel 33, DTV Channel 33 • Tuscaloosa, AL**

**Expected Change In Coverage: Granted Construction Permit**

**CP (solid): 278 kW ERP at 657 m HAAT, Network: ABC**  
**vs. Analog (dashed): 4370 kW ERP at 662 m HAAT, Network: ABC**

**Market: Birmingham, AL**



- Coverage gained after DTV transition
- (no symbol) No change in coverage
- ◆ Coverage lost but still served by same network
- ▲ Coverage lost and no other service by same network

Birmingham, AL

WCFT-TV

Population Receiving Analog Service ..... 1,258,597  
Population Receiving Digital Service..... 1,401,771

The following statistics pertain only to the area outside  
the analog service contour:

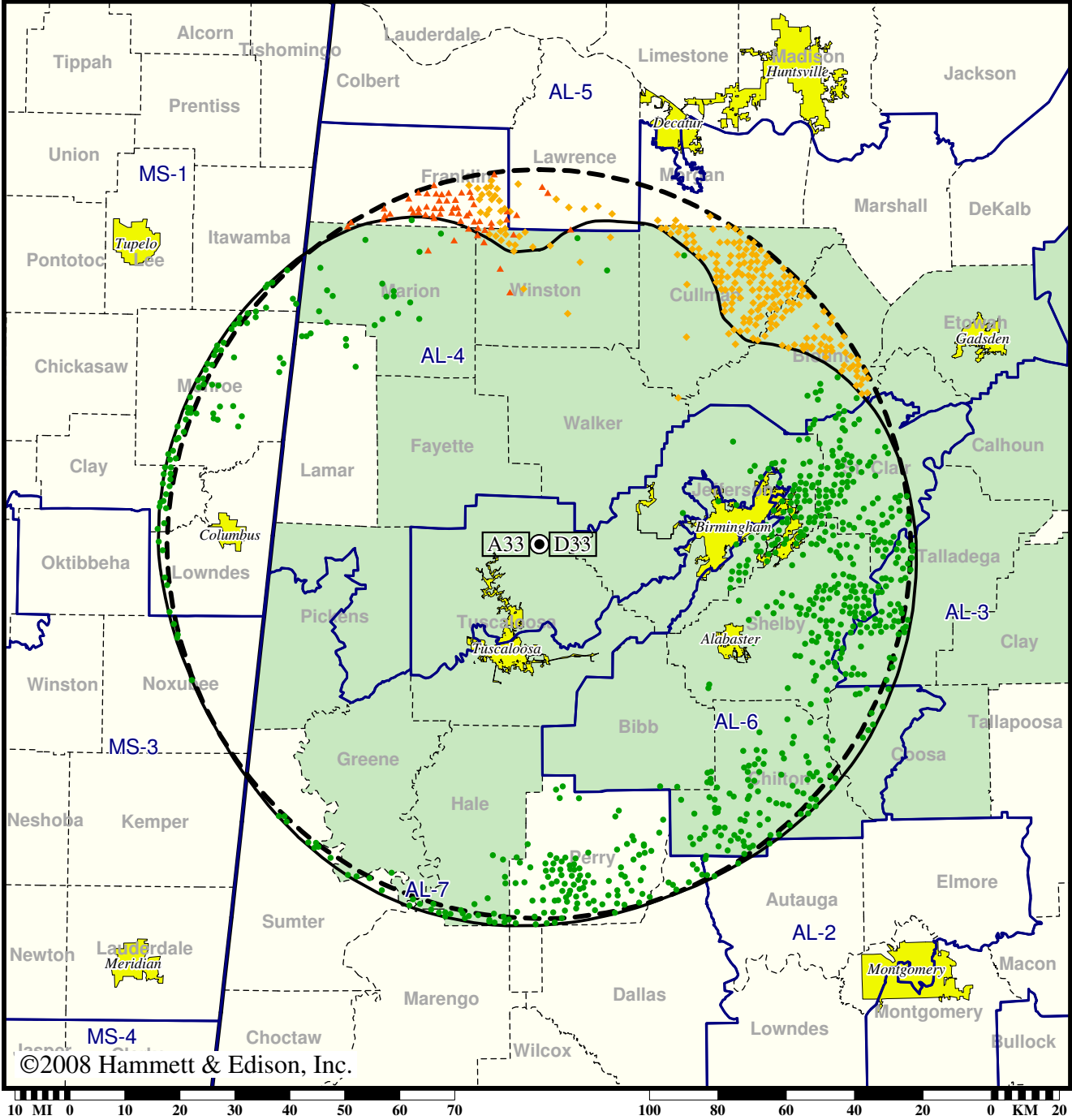
Analog Population Losing Service ..... 49,378  
Population Gaining Digital Service ..... 16,529  
Net Gain ..... -32,849

Station WCFT-TV • Analog Channel 33, DTV Channel 33 • Tuscaloosa, AL

Expected Change In Coverage: Granted Construction Permit

CP (solid): 278 kW ERP at 657 m HAAT, Network: ABC  
 vs. Analog (dashed): 4370 kW ERP at 662 m HAAT, Network: ABC

Market: Birmingham, AL



©2008 Hammett & Edison, Inc.

- Coverage gained after DTV transition
- (no symbol) No change in coverage
- ◆ Coverage lost but still served by same network
- ▲ Coverage lost and no other service by same network

Birmingham, AL

WCFT-TV

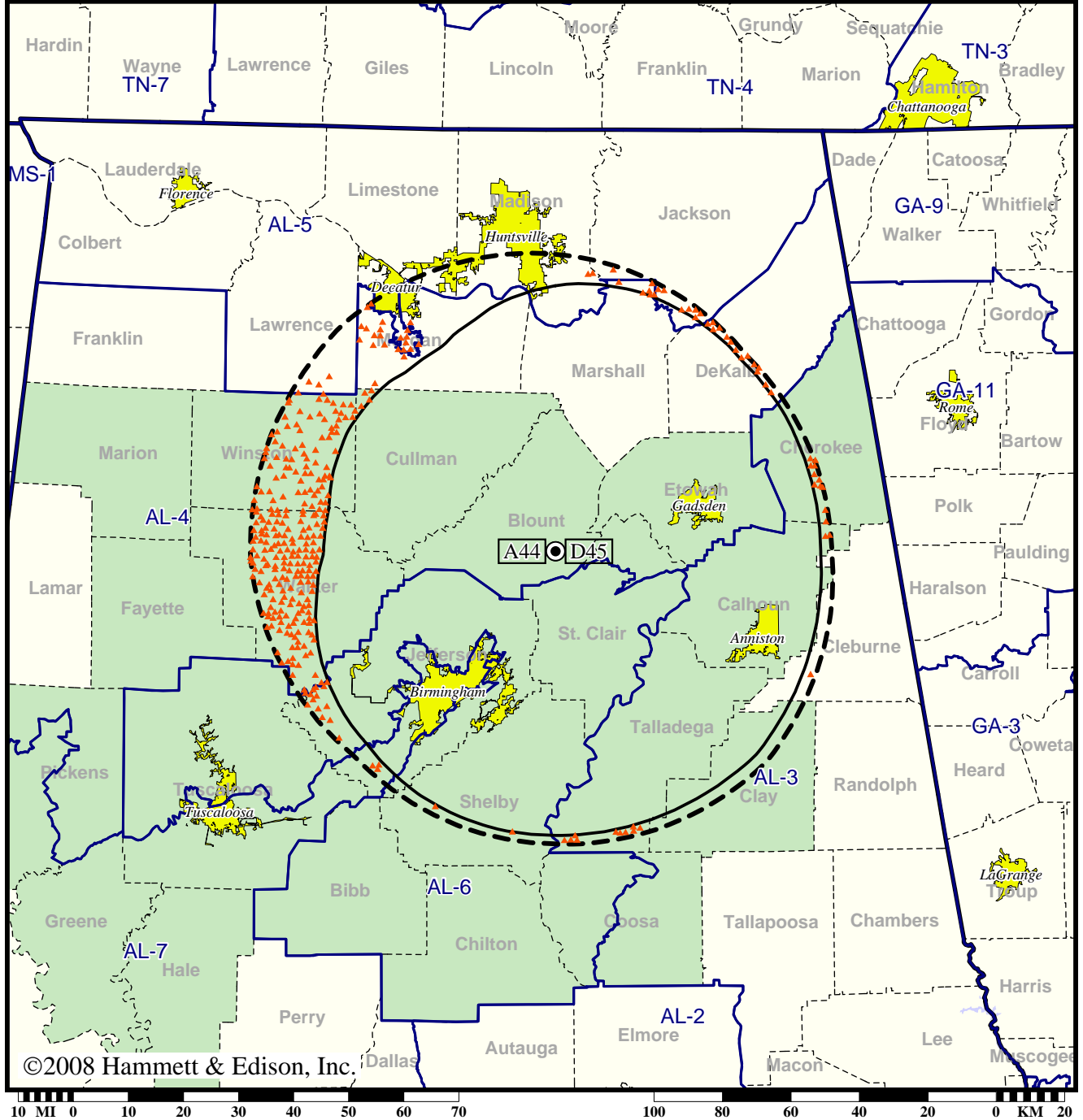
Population Receiving Analog Service .....	1,258,597
Population Receiving Digital Service.....	1,401,771
Analog Population Losing Service .....	50,899
Population Gaining Digital Service .....	194,073
Net Gain .....	143,174

TV Station WPXH • Analog Channel 44, DTV Channel 45 • Gadsden, AL

Expected Change In Coverage: Licensed Operation

Licensed (solid): 225 kW ERP at 309 m HAAT  
vs. Analog (dashed): 5000 kW ERP at 340 m HAAT

Market: Birmingham, AL



- (no symbol) No change in coverage
- ▲ Coverage lost after DTV transition

Birmingham, AL

WPXH

Population Receiving Analog Service ..... 1,073,435  
Population Receiving Digital Service..... 1,296,102

The following statistics pertain only to the area outside  
the analog service contour:

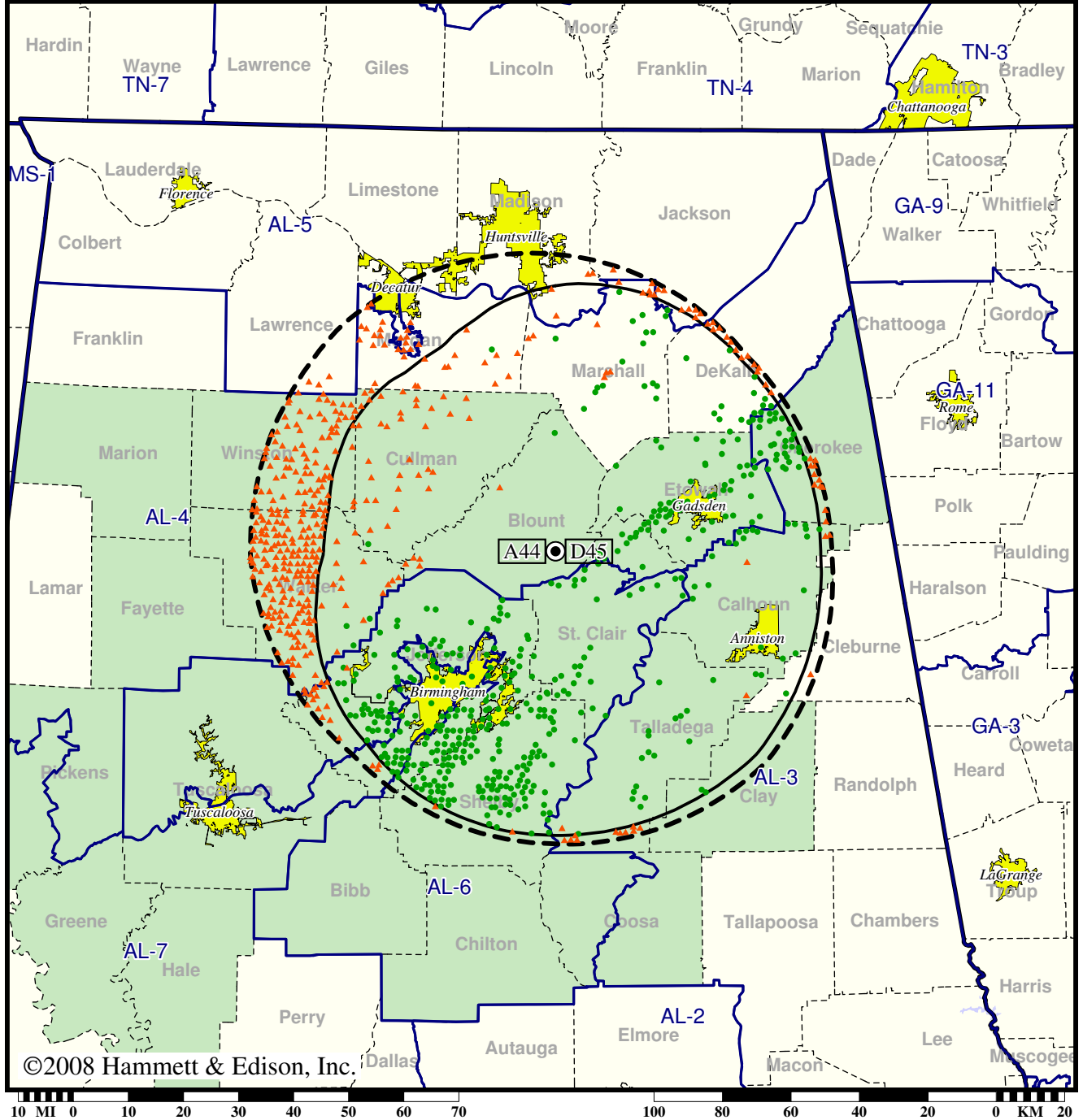
Analog Population Losing Service ..... 63,189  
Population Gaining Digital Service ..... 0  
Net Gain ..... -63,189

TV Station WPXH • Analog Channel 44, DTV Channel 45 • Gadsden, AL

Expected Change In Coverage: Licensed Operation

Licensed (solid): 225 kW ERP at 309 m HAAT  
vs. Analog (dashed): 5000 kW ERP at 340 m HAAT

Market: Birmingham, AL



- Coverage gained after DTV transition
- (no symbol) No change in coverage
- ▲ Coverage lost after DTV transition

Birmingham, AL

WPXH

Population Receiving Analog Service .....	1,073,435
Population Receiving Digital Service.....	1,296,102
Analog Population Losing Service .....	75,491
Population Gaining Digital Service .....	298,158
Net Gain .....	222,667

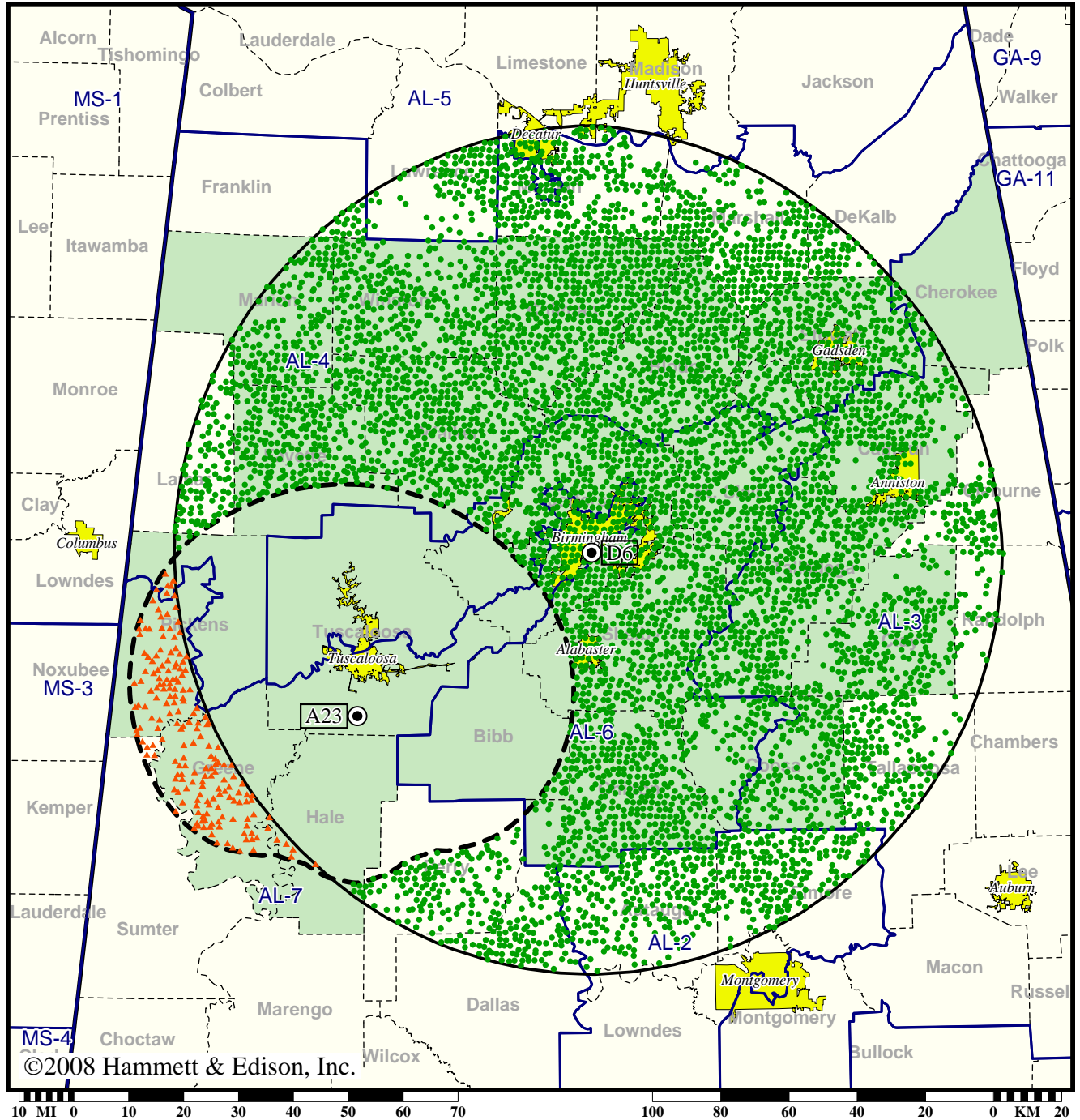


TV Station WUOA • Analog Channel 23, DTV Channel 6 • Tuscaloosa, AL

Expected Change In Coverage: Granted Construction Permit

CP (solid): 26.0 kW ERP at 395 m HAAT  
vs. Analog (dashed): 890 kW ERP at 266 m HAAT

Market: Birmingham, AL



- Coverage gained after DTV transition
- (no symbol) No change in coverage
- ▲ Coverage lost after DTV transition

Birmingham, AL

WUOA

Population Receiving Analog Service ..... 243,893  
Population Receiving Digital Service..... 1,971,511

The following statistics pertain only to the area outside  
the analog service contour:

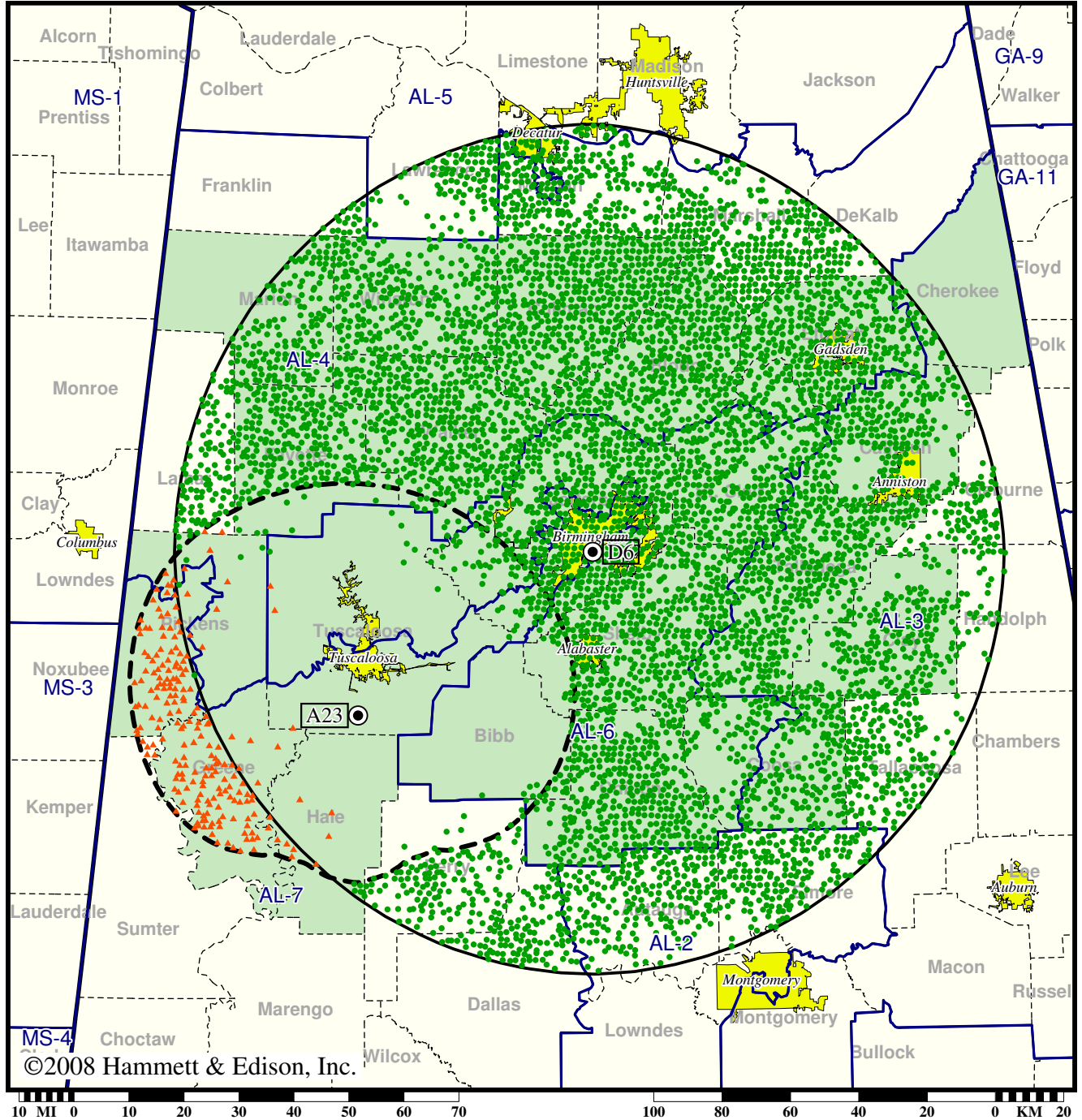
Analog Population Losing Service ..... 12,513  
Population Gaining Digital Service ..... 1,712,489  
Net Gain ..... 1,699,976

TV Station WUOA • Analog Channel 23, DTV Channel 6 • Tuscaloosa, AL

Expected Change In Coverage: Granted Construction Permit

CP (solid): 26.0 kW ERP at 395 m HAAT  
vs. Analog (dashed): 890 kW ERP at 266 m HAAT

Market: Birmingham, AL



- Coverage gained after DTV transition
- (no symbol) No change in coverage
- ▲ Coverage lost after DTV transition

Birmingham, AL

WUOA

Population Receiving Analog Service .....	243,893
Population Receiving Digital Service.....	1,971,511
Analog Population Losing Service .....	13,112
Population Gaining Digital Service .....	1,740,730
Net Gain .....	1,727,618