



UNITED STATES
POSTAL SERVICE®

**Bryan CSMPC
Area Mail Processing (AMP)
Public Meeting**

January 3, 2012



Two Topics

**Radical
Network
Realignment**

**Area Mail
Processing
Study**



Volume in Billions of Pieces

NETWORK CAPACITY

GROWTH
Capacity Expansion



NETWORK CAPACITY



Potential Decrease in Processing Facilities Through 2013



487 Facilities Today



● Current Mail Processing Sites

Studying 252 Facilities for Potential Consolidation



Potential Network





Mail Processing Facility



FUTURE NETWORK

- Support 2-3 day Service Standards
 - Revised Entry Times
 - Reduced Equipment
 - Reduced Footprint
-

BENEFITS

- Eliminate Excess Capacity
- More Efficient Transportation Network
- Fully Utilized Workforces
- Significant Annual Savings

CHANGES

- Planning for new mail processing footprint and transport pattern
 - Transitioning to 2-3 day service standard
-

OUR APPROACH

- Ongoing communication and collaborative solutions

559,000

Total Career Employees

151,000

Total Mail Processing Employees

35,000

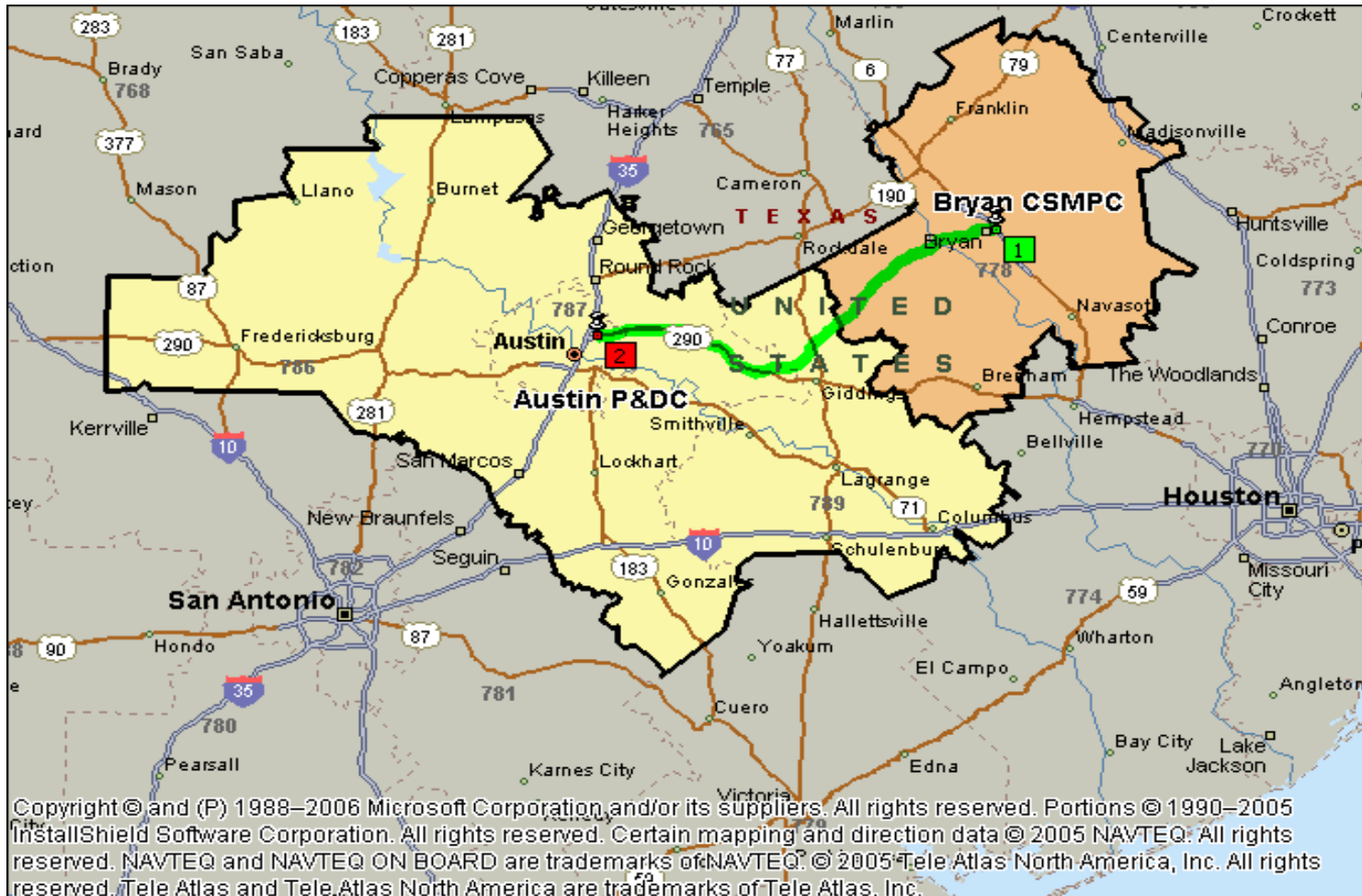
Fewer Mail Processing Positions



Topic

**Area Mail
Processing
Study**

DISTANCE BETWEEN FACILITIES – 100 miles



BUSINESS CASE*

Mail Processing Workhour Savings:	\$2,438,423
Mail Processing Management Savings:	\$ 99,622
Maintenance Savings:	\$ 108,967
Transportation Savings:	\$3,055,181
<hr/>	
Proposed Annual Savings:	\$5,702,193

***Preliminary results subject to change**

EMPLOYEE IMPACTS*

Craft Employees Impacted at Bryan CSMPC	- 40
Proposed Craft Positions to be added at Austin P&DC	+ 5
Net Craft Employees impacts due to consolidations	- 35

All bargaining employee reassignments will be made in accordance with the respective collective bargaining agreements.

***Preliminary results subject to change**

CUSTOMER & DELIVERY SERVICES

- Supports a 2-3 day service standard for First-Class Mail
- Retail and other services
- Business mail acceptance
- Collection mail
- Delivery of mail
- Local postmark

NEXT STEPS

- Complete Area and HQ review
- Review Public Comments
- Continue Network Optimization studies



Mail additional comments to:

Manager, Consumer and Industry Contact
Houston District
PO Box 250001
Houston TX 77202-9631

Must be postmarked by January 18, 2012.