

Welcome

**Bluefield, WV
Area Mail Processing (AMP)
Public Meeting
August 29, 2011**

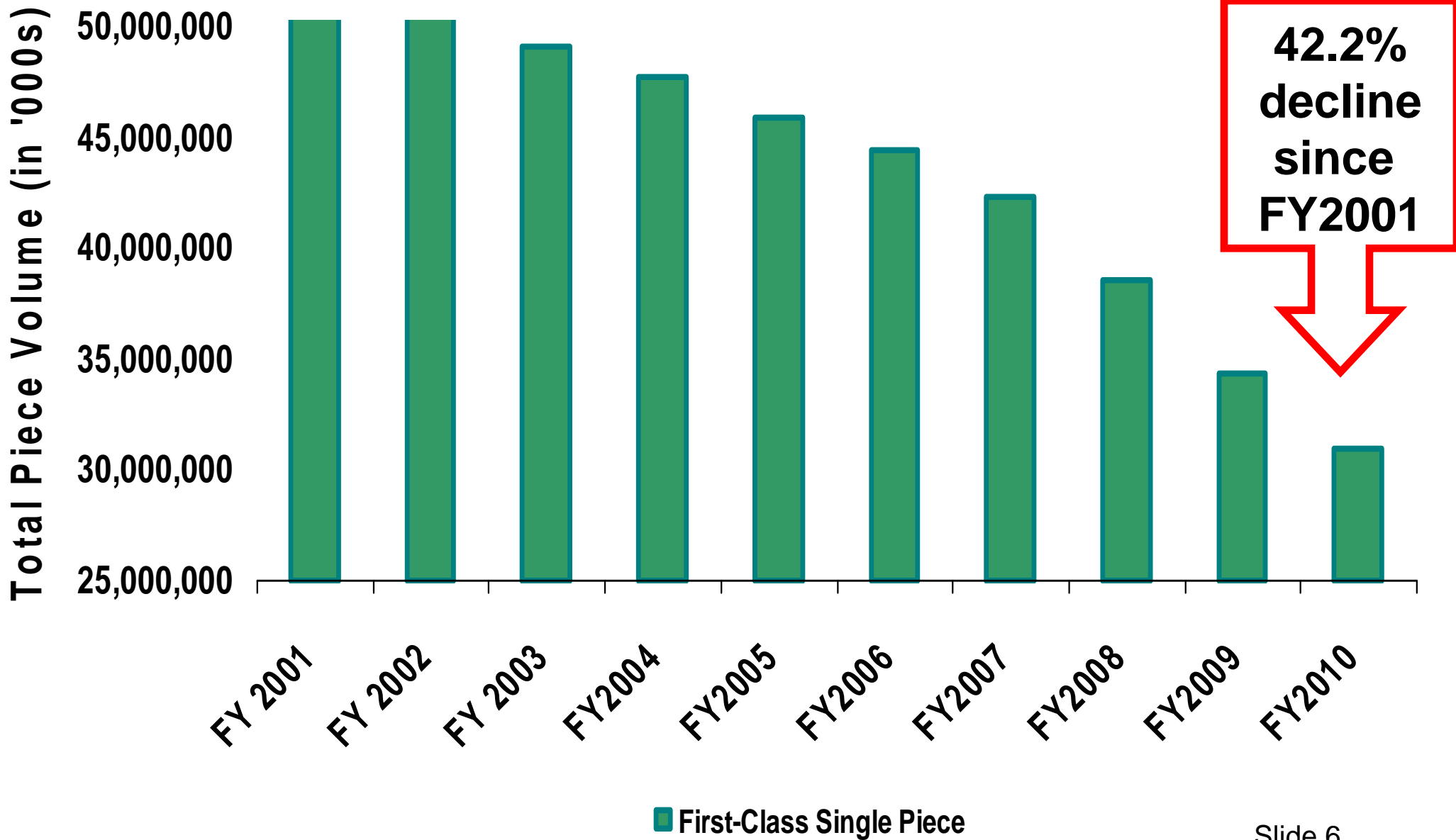
- **Video Presentation -
*Area Mail Processing (AMP)***
- **USPS Management Presentation**
- **Public Comments**
- **Meeting Close**

AMP Video Presentation

- **AMP (Area Mail Processing)**
Consolidation of all outgoing or all incoming mail processing operations from one or more facilities into other automated processing facilities for the purpose of improving operational efficiency and/or service.
- **Effective process used for decades to help us adjust to changes in the environment**

- **Postal Service faces “Acute Financial Crisis”**
- **Impacts due to the rise in Electronic Communications**
- **Economic Recession**
- **Change in Mail Mix**
 - Increase in Work Sharing and Drop Shipments
 - Decrease in First-Class Mail Volume

The Need for Change



Benefits of Consolidation

- **Puts the Right People in the Right Location with the Right Resources**
- **Utilizes Equipment Efficiently**
- **Reduces Overall Costs**
- **Supports Our Network Plan**

- **Office Inspector General (OIG) validated the new AMP process calling it credible and sound**
- **Recent OIG audits show AMP consolidations were prudent business decisions**
- **Government Accountability Office (GAO) Report stated we consistently follow the AMP process**

Service Standards for First-Class Mail

- Upgrade 2-day to Overnight
 - Bluefield to/from Huntington
 - Bluefield to Clarksburg, Parkersburg, Gassaway

- Downgrade Overnight to 2-day
 - Bluefield to/from Roanoke, Bristol and Lima
 - Lewisburg to Bluefield

Service Standards for First-Class Mail

- Upgrade 3-day to 2-day
 - Bluefield to/from parts of North & Central FL, GA, MS, TN, AR, TX and LA
 - Parts of Central and Northern IL and MO to Bluefield

- Downgrade Overnight to 2-day
 - Bluefield (246) to/from Bluefield (247-249)
 - Bluefield to/from parts of NY, NJ, CT, PA and the Mid-Atlantic

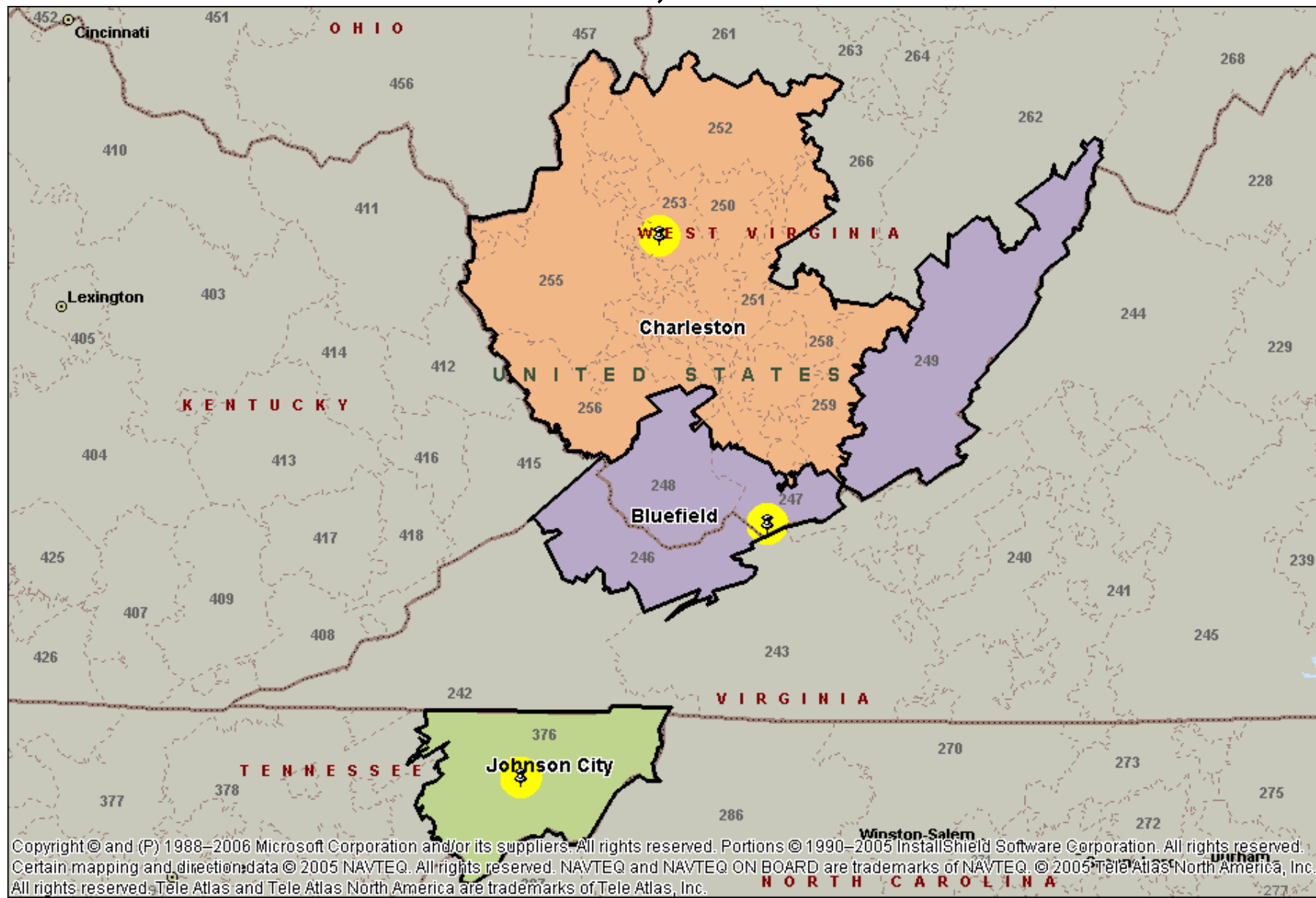
Customer & Delivery Services

- Delivery Services
- Customer Services
 - Retail Hours
 - Business Mail Acceptance
 - Drop Shipment

- **Jobs**
 - Impacted Jobs
- **Community Identity**
 - Local Postmark Remains Available
 - Meter and Permit Indicia Do Not Change

Approximate Distances:

113 miles to Charleston, 140 miles to Johnson City



Proposed Annual Savings of \$2,105,055 *

Mail Processing Employee Savings:	\$1,513,624
Mail Processing Management Cost:	(\$1,739)
Maintenance Savings:	\$319,665
Transportation Savings:	\$273,505

Projected net decrease of 7 positions *

Net craft impacts: -7

Net supervisor/management impacts: 0

All bargaining employee reassignments will be made in accordance with the respective collective bargaining agreements.

* Preliminary results subject to change

Benefits from consolidation

- Annual savings
- Maximize resources
- Reduce excess capacity
- Eliminate duplicate operations
- Focus on remaining operations

- No changes to delivery times
- No changes to retail services
- No changes to meter and permit indicia
- Hours and location of business mail acceptance remains the same,
- Mailers who drop ship to Destination Sectional Center Facility (DSCF) 246-249 can expect changes if the AMP is approved.

- Reduces Costs
- Improves Efficiency
- Puts the Right People in the Right Location with the Right Resources
- Transparent to Customer Services
- Supports our Strategic Plan

If you wish to comment or have a question,
please come to the microphone and state
your:

Name

Affiliation

Comment or Question

Please be courteous

Mail additional comments to:

Manager, Consumer & Industry Contact

Appalachian District

PO Box 59631

Charleston, WV 25350-9631

Must be postmarked by September 13, 2011